

**Canon**

**Exif Print**

**BUBBLE JET  
DIRECT**

**PictBridge**

Photo Printer

# **PIXMA iP90v**

## **Quick Start Guide**



# Getting Help from Canon

## Help Us Help You Better

**Before you contact Canon, please record the following information.**

Serial Number (located on the back of the printer): \_\_\_\_\_

Model Number (located on the top of the printer): \_\_\_\_\_

Setup Software and User's Guide CD version number (USCD X.X)  
located on your CD-ROM: \_\_\_\_\_

Purchase Date: \_\_\_\_\_

## Canon U.S.A. Customer Technical Support Sequence\*

### 1. Internet — [www.canontechsupport.com](http://www.canontechsupport.com)

For quick and comprehensive self-help in an intuitively guided interactive troubleshooting environment, the place to start is our helpful tech support web site. In addition, the latest driver downloads, answers to frequently asked questions, product information, and "where to buy" instructions are found here.

### 2. Email Tech Support — [www.canontechsupport.com](http://www.canontechsupport.com)

For individual attention to a special issue, try emailing our friendly technical engineers, specially trained to communicate quick, easy, and logical solutions to your inquiries within 24 hours.

### 3. Toll-Free Live Tech Support — (1-800-828-4040)

This option provides live telephone technical support, free of service charges, Monday-Saturday (excluding holidays), during your product's 1 year limited warranty period. Telephone Device for the Deaf (TDD) support is available at **(1-866-251-3752)**.

### 4. Extended Service and Support — [www.canonesp.com](http://www.canonesp.com)

Canon CarePAK Extended Service Plan is a cost-attractive and easy-to-use extended service program that provides up to three full years of service and support coverage at a very attractive price. CarePAK offers toll-free Canon technical support and includes Canon's superb InstantExchange product replacement program. For further information about extending your Canon service and support, call (1-800-385-2155), or visit our web site at **[www.canonesp.com](http://www.canonesp.com)**. CarePAK must be purchased during your product's warranty period.

For more information and updated program specifics, please visit our web site at **[www.canontechsupport.com](http://www.canontechsupport.com)**.

\* Support program specifics are subject to change without notice.

**Canon**

**PIXMA iP90v**

**Photo Printer**

**Quick Start Guide**

## Canon PIXMA iP90 Photo Printer Quick Start Guide

### Copyright

This manual is copyrighted by Canon U.S.A., Inc. with all rights reserved. Under the copyright laws, this manual may not be reproduced in any form, in whole or in part, without the prior written consent of Canon U.S.A., Inc.

© 2005 Canon U.S.A., Inc.

### Disclaimer

Canon U.S.A., Inc. has reviewed this manual thoroughly in order that it will be an easy-to-use guide to your Canon PIXMA iP90 Photo Printer. All statements, technical information and recommendations in this manual and in any guides or related documents are believed reliable, but the accuracy and completeness thereof are not guaranteed or warranted, and they are not intended to be, nor should they be understood to be, representation or warranties concerning the products described.

Specifications are subject to change without notice.



As an ENERGY STAR partner, Canon U.S.A., Inc., has determined that this product meets the ENERGY STAR guidelines for energy efficiency.

All information regarding non-Canon products was compiled from publicly available information. No representation is made regarding the accuracy thereof.

### Trademarks

- Canon, BCI and PhotoRecord are registered trademarks and PIXMA is a trademark of Canon Inc.
- Macintosh, Mac and the Mac logo are registered trademarks of Apple Computer, Inc., registered in the U.S. and other countries.
- Microsoft® and Windows® are registered trademarks of Microsoft Corporation in the U.S. and other countries.
- IrDA Feature Trademark and IrDA Logo are owned by the Infrared Data Association.
- The Bluetooth® word mark and logos are owned by the Bluetooth SIG, Inc. and any use of such marks by Canon, Inc. is under licence.
- All other product and brand names are trademarks of their respective owners.

Canon U.S.A., Inc.  
One Canon Plaza  
Lake Success, NY 11042

# Contents

## Basic Printing

Turning on the Printer .....	2
Turning off the Printer .....	3
Loading Paper .....	4
Using Speciality Media .....	8
Printing with Windows .....	10
Printing with Macintosh .....	12
Canceling Printing .....	14
Printing Data through Infrared Communication .....	15

## Advanced Printing

Printing Photographs Directly from a PictBridge Compliant Device .....	23
Accessing Printer Driver .....	29
Adjusting Print Quality for Photographs .....	30
Using the Bundle Software .....	37
Printing Borderless Photographs .....	38

## Printing Maintenance

When Printing Becomes Faint or Colors are Incorrect .....	41
Printing the Nozzle Check Pattern .....	42
Print Head Cleaning .....	47
Print Head Deep Cleaning .....	52
Aligning the Print Head .....	57
Replacing an Ink Tank .....	61

## Troubleshooting


Cannot Install the Printer Driver .....	70
Print Quality is Poor or Contains Errors .....	72
Troubleshooting Printer Hardware .....	74
Paper Does Not Feed Properly .....	75
Handling Error Messages .....	76
An Error Message Appears on the Screen .....	78
Cannot Print Properly through Infrared Communication .....	81
Cannot Print Properly from the Digital Camera .....	82

## Appendix


Printing Photographs Directly from Canon Bubble Jet Direct Compatible Digital Cameras .....	84
User's Guide Table of Contents .....	86
Accessory Options .....	87
Traveling Abroad with the Printer .....	89
Specifications .....	91
Safety Precautions .....	94
Regulatory Information .....	96
CANON U.S.A., INC. LIMITED WARRANTY --- (USA Only) .....	97

Index .....	99
-------------	----


# Basic Printing

 **Note** This *Quick Start Guide* describes some of the features of your iP90 printer and how to use them. For more information, view the iP90 *User's Guide* installed on your computer, or use the online help within your printer driver interface.

## Windows

While in the printer's Properties window, press the **F1** key, or click  in the upper right corner. Then click the feature you want to know more about, or click **Help** when displayed.

## Macintosh

While in the **Page Setup** dialog box or **Print** dialog box, click  in the lower left corner.

Click  provides detailed information about each setting.

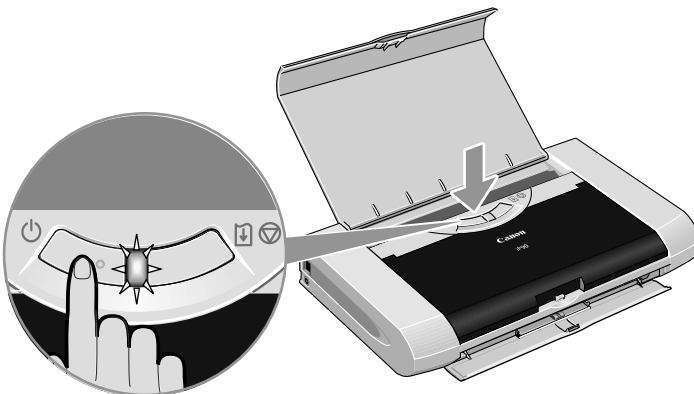
When the Help window appears, select your desired topic.

## Turning on the Printer

**1** Open the Paper Support.

**2** Press the **POWER** button.

The **POWER** lamp flashes while the printer warms up and changes to steady (non-flashing) green when the printer is ready.

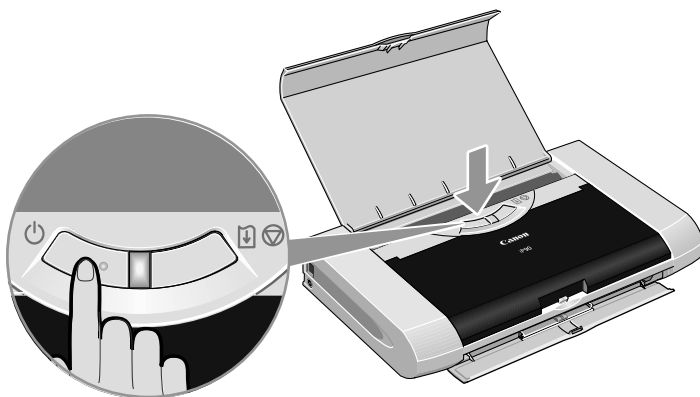


**Important** If the **POWER** lamp changes to orange and begins flashing, refer to the section "**Handling Error Messages**" on page 76.

## Turning off the Printer

- 1 To turn off the printer, press the **POWER** button.

When the **POWER** lamp stops blinking, the printer is turned off.



### **Important** About the Power Plug

When removing the power plug after turning off the printer, be sure to check that the **POWER** lamp is not lit. If the power plug is removed from the wall outlet with the **POWER** lamp lit or blinking, the printer cannot protect the print head and may be unable to print.

# Loading Paper

### ■ Print Media to Avoid

Do not use the following types of paper. Using such paper will not only produce unsatisfactory results, but can also cause the printer to jam or malfunction.

- Folded, curled or wrinkled paper
- Damp paper
- Paper that is too thin (less than 64 gsm or 17 lb)
- Paper that is too thick\* (more than 105 gsm or 28 lb)

\*non-Canon branded paper

- Picture postcards
- Postcards with an affixed photo or sticker
- Envelopes with a double flap
- Envelopes with pressure seals
- Envelopes with an embossed or treated surface

### ■ Preparing the Printer

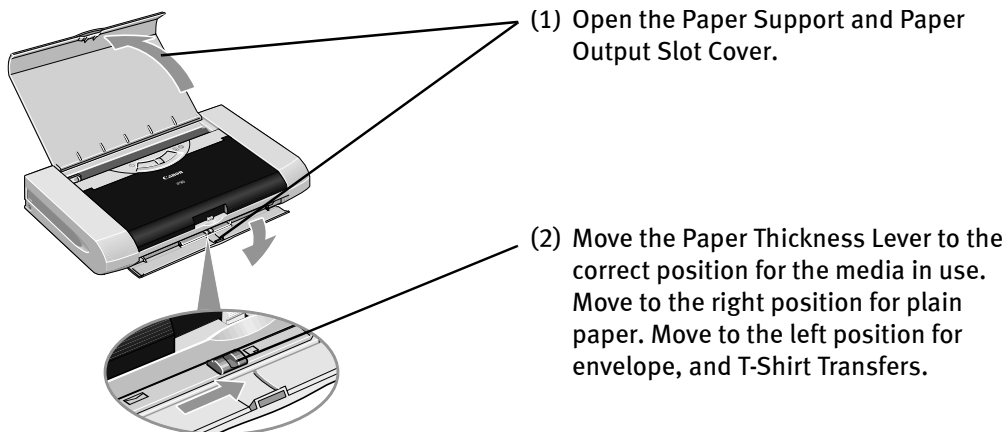
- For detailed information on the speciality media Canon provides for use with its various printers, refer to the section "**Using Speciality Media**" on page 8.
- Consult "Printing Media" in the *User's Guide* for detailed instructions on how to load speciality media into the printer.


## 1 Flatten the four corners of the paper before loading it.

**Important** When paper is curled, gently bend them in the opposite direction until the paper becomes completely flat.



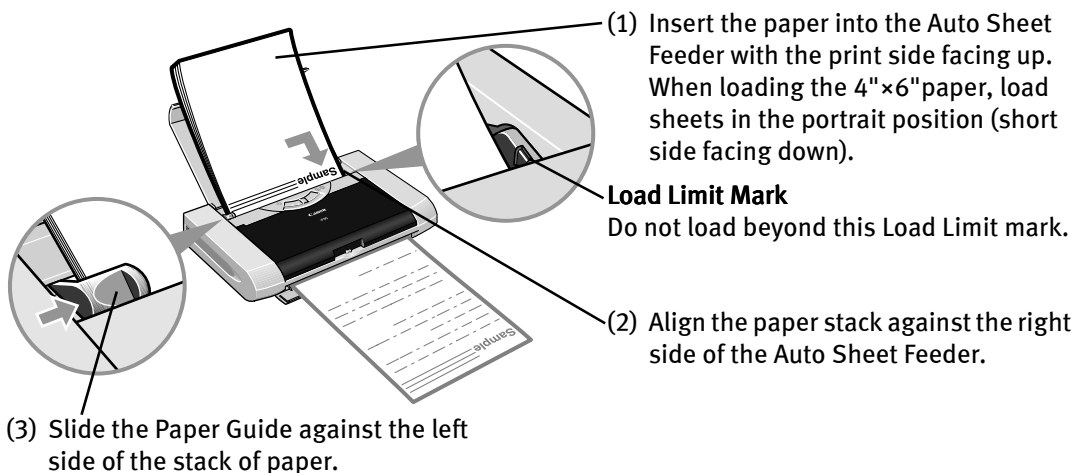
## 2 Prepare to load paper.



-  **Note**
- Place the printer on a flat surface.
  - Do not place any obstacles in front of the printer to secure the space for paper output.
  - Remove each sheet as soon as paper is out. If the Paper Output Slot Cover is stacked with printed sheets, they may be folded or jammed.
  - When performing duplex printing, pay great attention to the dust and stain on the area (desk, etc.) where the printed paper is ejected. Printing with dust and stain remaining on this area can have a bad effect on the printing result and printer.

## 3 Load the paper.

### ■ Loading Plain Paper



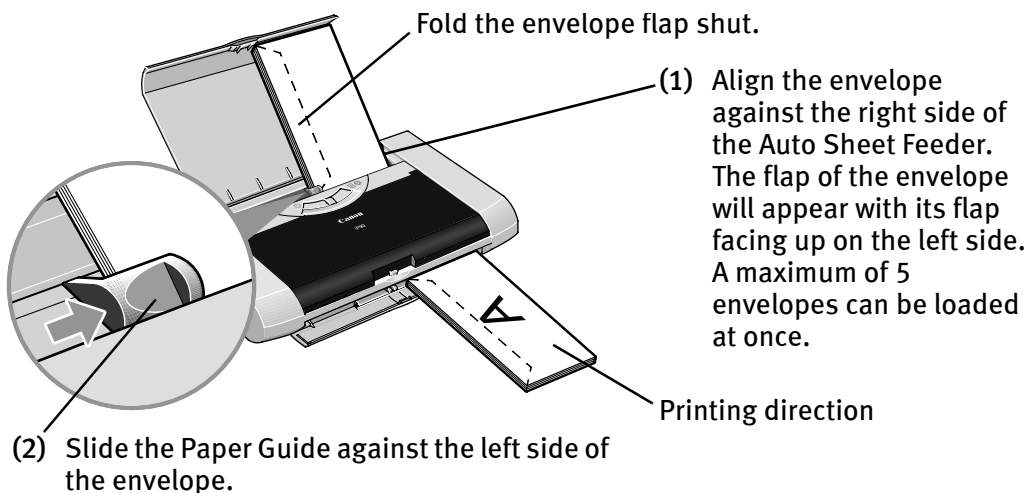


- Note**
- Do not stack more than 10 sheets in the Paper Output Slot Cover.
  - Do not touch the printed surfaces until the ink dries. For specific drying times, refer to the instructions packaged with your media.

### ■ Loading Envelopes

Use either DL or US Comm. #10 size envelopes.

- Important**
- Do not use envelopes with embossed or treated surfaces, a double flap, pressure seals or sticker flaps.
  - Select either **DL Env.** or **Comm. Env. #10** according to the envelope size you are using.



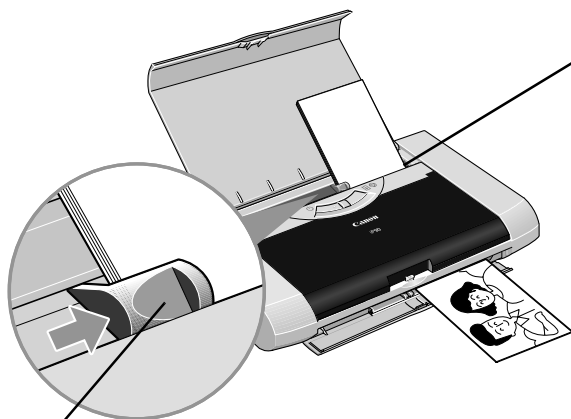
- (2) Slide the Paper Guide against the left side of the envelope.

- (3) Select **Envelope** in **Media Type**, and then select **Comm. Env. #10** or **DL Env.** in **Page Size**.

For the printer driver setting, refer to "**Printing with Windows**" on page 10, "**Printing with Macintosh**" on page 12.

## ■ Loading 4" x 6" size papers

You can print on 4" x 6" size papers.



- (1) Align the paper stack against the right side of the Auto Sheet Feeder. Despite the direction of the photograph, load the paper in the vertical direction. You can load a maximum of 10 sheets of 4" x 6" paper. (When using the Photo Paper Plus Double Sided PP-101D, set only one sheet at a time)

- (2) Slide the Paper Guide against the left side of the stack of paper.

- (3) Select **4 x 6 in** in **Page Size**.

For the printer driver setting, refer to "**Printing with Windows**" on page 10, "**Printing with Macintosh**" on page 12.

# Using Speciality Media

Canon recommends that you use genuine Canon media to ensure optimal print quality.

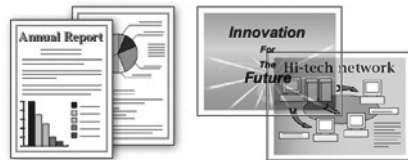
## ■ Photo Quality Media

- Photo Paper Pro
- Photo Paper Plus Glossy
- Photo Paper Plus Double Sided
- Photo Paper Plus Semi-Gloss
- Matte Photo Paper
- Glossy Photo Paper



## ■ Media Suited to Business Documents

- High Resolution Paper
- Transparencies




## ■ Canon Speciality Media

Media Name	Paper Support Load Limit	Paper Thickness Lever Position	Printer Driver Settings for Media Type
Super White Paper	Letter: up to 3mm	Right	Plain Paper
Photo Paper Pro	Letter: up to 1 sheet 4"×6": up to 10 sheets	Right	Photo Paper Pro
Photo Paper Plus Glossy	Letter: up to 5 sheets* <sup>1</sup> 5"×7": up to 10 sheets 4"×6": up to 10 sheets	Right	Photo Paper Plus Glossy
Photo Paper Plus Double Sided	Letter: 1 sheet 5"×7": 1 sheet	Right	Photo Paper Plus Double Sided
Photo Paper Plus Semi-Gloss	Letter: up to 5 sheets 4"×6": up to 10 sheets	Right	Photo Paper Plus Glossy
Matte Photo Paper	Letter: up to 10 sheets 4"×6": up to 10 sheets	Right	Matte Photo Paper
Glossy Photo Paper	Letter: up to 10 sheets* <sup>1</sup> 4"×6": up to 10 sheets Credit Card: up to 10 sheets	Right	Glossy Photo Paper
High Resolution Paper	Letter: up to 10 sheets	Right	High Resolution Paper
Photo Stickers* <sup>2</sup>	1 sheet	Right	Photo Paper Plus Glossy
T-Shirt Transfers	1 sheet	Left	T-Shirt Transfers
Transparencies	Up to 10 sheets* <sup>1</sup>	Right	Transparencies


\*<sup>1</sup> When paper cannot be fed normally, load the necessary number of sheets in the Auto Sheet Feeder with them separating from each other to avoid them from sticking together.

\*<sup>2</sup> When Windows is being used, you can specify the print setting easily by using the PhotoRecord software provided with the *Setup Software & User's Guide CD-ROM*.  
For instructions on how to print from the software applications, refer to the *Photo Application Guide*.

-  **Note**
- When using plain paper (64 gsm or 17 lb), up to 30 sheets can be set. Set the Paper Thickness Lever (gray) to the right and select **Plain Paper** from the printer driver **Media Type**.
  - For a detailed description of print media types, refer to "**Printing Media**" in the *User's Guide*.



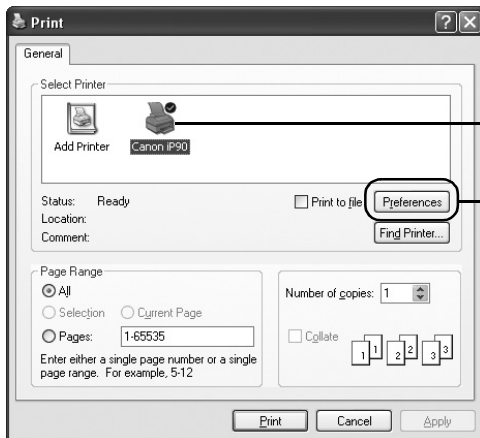
# Printing with Windows

-  **Note**
- The menu screens and dialog boxes that appear may vary, depending on the software application you are using.
  - The steps described in this section are for printing in Windows XP Service Pack 2 (hereafter, called Windows XP SP2).

**1** Create a document or open a file to print.


**2** Open the **Printer Properties** dialog box.

(1) Select **Print** from the application's **File** menu.

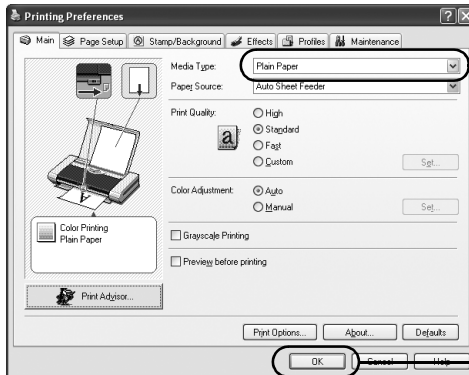


(2) Ensure that **Canon iP90** is selected.

(3) Click **Preferences or Properties**.

-  **Note** In Windows 2000, click the **Main** tab in the **Print** dialog box.

### 3 Specify the required settings.

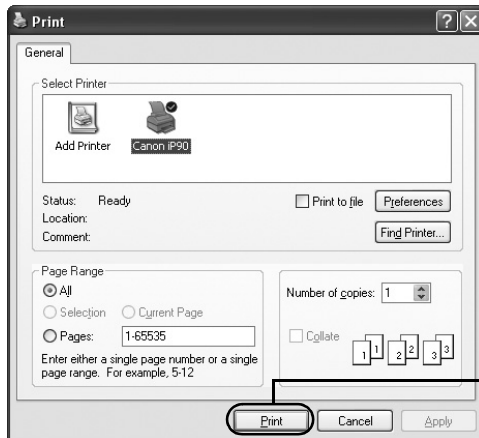


(1) Click **Media Type** to select the media loaded in the printer.


(2) Click **OK**.

- Note**
- From the **Page Setup** tab select the correct document size to be printed.
  - To adjust **Print Quality** settings, select **Custom** and click **Set** on the **Main** tab. You can control the quality in the **Set Print Quality** dialog box.
  - For details about other printer driver functions, refer to “(Windows) Printer Driver Functions” in the *User’s Guide* or Help.
  - Select **Preview before printing** by clicking the check box. This displays a preview screen that allows you to confirm the selected printing effects and how your document will look when printed. Some applications do not contain the function to display the preview.

### 4 Print the document.




(1) Click **Print**.

 **Note** You can cancel a print job in progress by simply pressing the **RESUME/CANCEL** button on the printer.

See "**Canceling Printing**" on page 14.

## Macintosh

# Printing with Macintosh

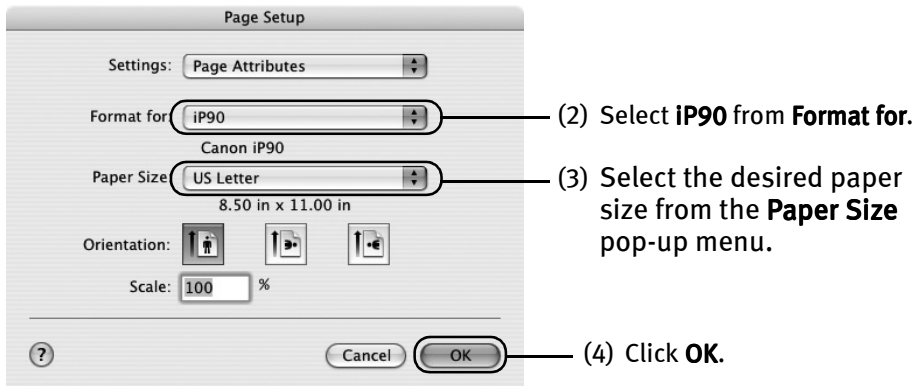
-  **Note**
- The menu screens and dialog boxes that appear may vary, depending on the software application you are using.
  - The steps described in this section are for printing in Mac OS X v.10.3.x.

**1** Create a document or open a file to print.

**2** Select Paper Size.

(1) Select **Page Setup** from the application's **File** menu.

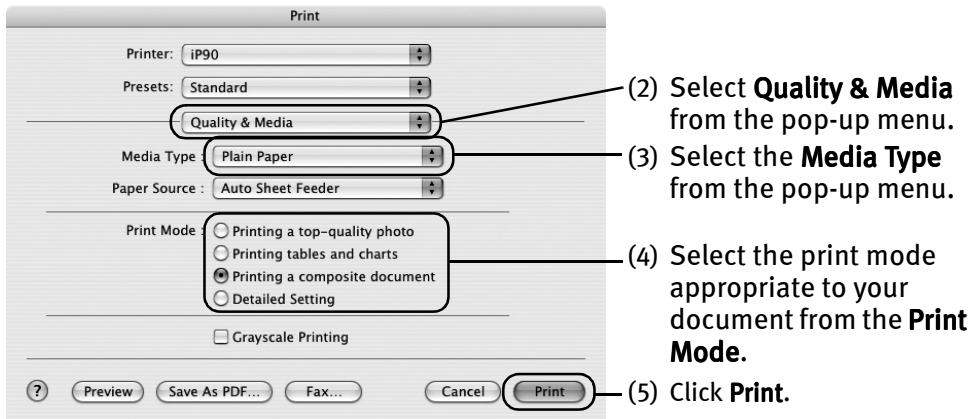
The **Page Setup** dialog box opens.






### 3 Specify the required settings.

- (1) Select **Print** from the application's **File** menu.



-  **Note** • When you select the print mode appropriate to your document from the **Print Mode**, the document will be printed in the color and print quality suited to the characteristics of the **Media Type** you have selected.

**Printing a top-quality photo:** Select when printing documents consisting mainly of photographs and graphics featuring fine color gradation.

**Printing tables and charts:** Select when printing documents consisting mainly of graphs and graphics (illustrations) with strong color definition.

**Printing a composite document:** Select when printing documents consisting mainly of text.

**Detailed Setting:** You can fine-tune Print Quality and Halftoning settings.

See "**Adjusting Print Quality**" on page 30.

- For details about other printer driver functions, refer to "(Macintosh) Printer Driver Functions" in the *User's Guide* or Help.
- You can cancel a print job while printing.

See "**Canceling Printing**" on page 14.

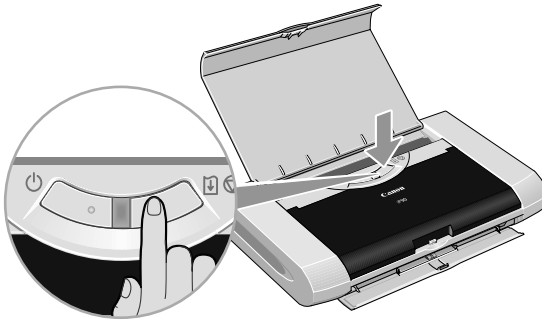
## Canceling Printing


### Windows

You can cancel a print job while printing with the **RESUME/CANCEL** button on the printer.

- 1 Press the **RESUME/CANCEL** button while printing.

Printing is canceled and the paper is ejected.



 **Note** Click **Cancel Printing** on the BJ Status Monitor to stop printing. To display the BJ Status Monitor, click **Canon iP90** on the taskbar. The BJ Status Monitor opens automatically when a printer error occurs.

### Macintosh

- 1 Select **Print** from the File menu in your application program.

The Print dialog box opens.


- 2 Select **Edit Printer List** from the Printer pop-up menu.

The Printer List opens.

- 3 Double-click the printer name displayed in the Name list

The iP90 dialog box opens.

- 4 Select the desired document, then click **Delete** icon.

 **Note** To temporarily stop a job in progress, click **Pause**. To cancel all the jobs in the list, click **Stop Printing**.

## Printing Data through Infrared Communication

If you have a computer, PDA or mobile phone with an Infrared Port for wireless data communication, you can print data with a cordless connection with the printer. You can also print images, an address book, a schedule, or memos received from a PDA or mobile phone in a specified format through infrared communication.

### ■ Requirements for Infrared Communication with the Computer

Printing through infrared communication can be performed under Windows XP, Windows Me, Windows 2000 or Windows 98. In order to use infrared communication, your computer must satisfy the following requirements:

CPU	Intel Pentium or higher
IrDA	IrDA 1.1 compliant
Baud rate (communication speed)	Max. 4 Mbps
Infrared communication devices	Infrared communication port incorporated in the computer



#### Note

- When printing through infrared communication, the Microsoft infrared communication driver must have been installed in Windows 98 computer or later.
- In Windows 98 or Windows Me, check whether the infrared communication driver has been installed. To activate the Infrared Port, carry out the following operation:
  1. Click **Start**, and select **Settings** and then **Control Panel**.
  2. Check whether the **Wireless Link** icon (Windows Me) or the **Infrared** icon (Windows 98) is displayed in the window.  
If this icon is displayed, the required infrared driver has already been installed. If this icon is not displayed, change the BIOS setting to activate (turn on) the Infrared Port. For the procedure, refer to your computer manual.

In Windows 98, follow the procedure below:

  3. Double-click the **Infrared** icon.
  4. Check whether the **Enable infrared communication** check box is selected. If the check box is not selected, select it.
- Before printing data or using a maintenance function of the printer driver, ensure that the name of the printer is displayed by placing the mouse pointer on the **Wireless Link** icon (For Windows 98, click the **Infrared** icon) on the Control Panel.
- In Windows XP or Windows 2000, the BJ Status Monitor is not displayed.

### ■ Requirements for Infrared Communication with the PDA

In order to use infrared communication, your PDA must satisfy the following requirements:

PDA	The PDA must have an IrDA port and support the file transfer using IrOBEX (Infrared Object Exchange) protocol
Printable contents	<ul style="list-style-type: none"><li>• Microsoft Pocket PC 2002 Contacts (perform printing from the contacts list), Calendar, Tasks, and Image (JPEG images only)</li><li>• Palm Computing Palm OS 3.5/4.1/5.0 Contacts, Date Book, To Do List, and Memo Pad (text only; printing hand-written memo pad is not supported)</li></ul>
Character code	<ul style="list-style-type: none"><li>• Alphanumeric code</li><li>• ISO 8859-1/2/5</li></ul>

### ■ Requirements for Infrared Communication with the Mobile Phone

In order to use infrared communication, your mobile phone must satisfy the following requirements:

Mobile phone	Mobile phone must have an IrDA port and support IrMC ver 1.1.
Printable contents	Address book, Mail, Photo image(JPEG image only)  *The contents which can be used change with usage's mobile phone.
Character code	<ul style="list-style-type: none"><li>• Alphabet-Numeric code</li><li>• ISO 8859-1/2/5</li></ul>

### ■ Setting the Media Type, Paper Size, and Layout When Printing From a PDA or Mobile Phone

You can select the media type, page size, layout and borderless printing in the **Canon iP90 Setup Utility** when printing from a PDA or mobile phone.

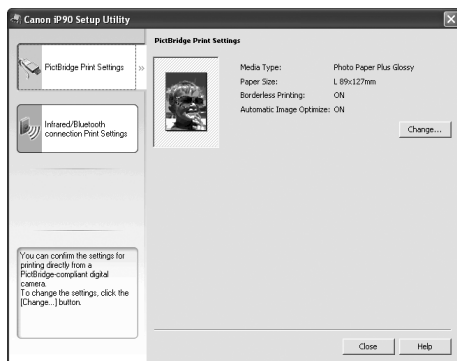
**Important** Before using the **Canon iP90 Setup Utility**, you must connect this printer to your computer with a USB cable and install the printer driver and **Canon iP90 Setup Utility**.

## 1 Set up the printer.

- (1) Ensure that the Universal AC Adapter is connected securely.  
When using the optional battery, ensure that it has been charged.

- (2) Connect the printer to your computer with a USB cable.
- (3) Open the Paper Support, turn on the printer, and then turn on the computer.

## 2 Start the Canon iP90 Setup Utility.



### Windows

Click **Start** and select **All Programs (or Programs)**, **Canon Utilities**, **Canon iP90 Setup Utility** and **Canon iP90 Setup Utility**. The **Canon iP90 Setup Utility** screen appears.

### Macintosh

Open the **Applications** folder, and then double-click the **Canon iP90 Setup Utility** folder and the **Canon iP90 Setup Utility** icon.

The **Canon iP90 Setup Utility** screen appears.

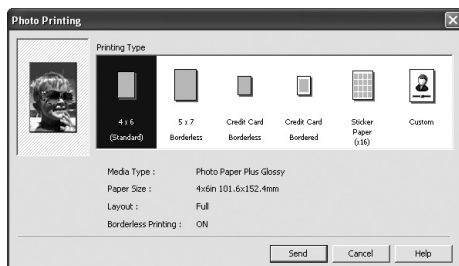
\*Windows XP SP2 is used as an example here.

The same operation is applicable in Macintosh.

## 3 Specify the paper size and layout.

### ■ Changing the Photo Print Settings

- (1) Click **Infrared/Bluetooth connection Print Settings** tab.
- (2) Click **Change** on **Photo Print Settings**.  
The **Photo Printing** dialog box appears.



(3) Select a desired layout for printing.

**4×6 (Standard)** Prints a photo on Photo Paper Plus Glossy 4"×6"/101.6×152.4 mm paper without a border.

**5×7 Borderless** Prints a photo on Photo Paper Plus Glossy 5"×7"/127.0×177.8 mm paper without a border.

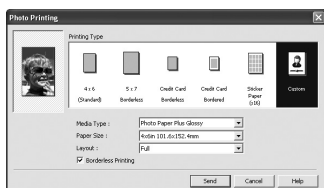
**Credit Card Borderless** Prints a photo on Photo Paper Plus Glossy Credit Card 2.13"×3.39"/54×86 mm without a border.

**Credit Card Bordered** Prints a photo on Photo Paper Plus Glossy Credit Card 2.13"×3.39"/54×86 mm with a border.

**Sticker Paper (×16)** Prints 16 photos on Photo Paper Plus Glossy Sticker paper with a border.



**Note** Click **Custom** if you want to specify the media type, paper size, layout, and borderless printing.



- Media Type..... Specifies the type of media loaded on the printer.
- Paper Size ..... Specifies the size of paper loaded on the printer.
- Layout..... Specifies how many images to print on a sheet.
- Borderless Printing... Specifies whether to perform borderless printing or not.

\*Refer to the *User's Guide* for more detailed information on media type.

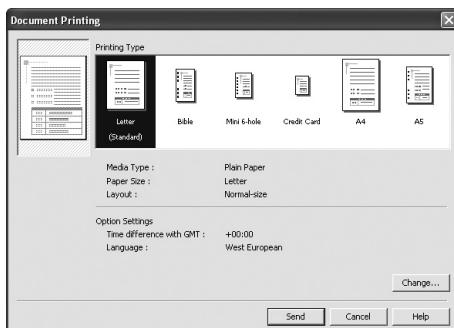
(4) Click **Send**.

You can perform printing from a PDA or mobile phone with the specified media type and layout.


For details about printing from PDA or mobile phone, refer to the section "**Performing Infrared Communication**" on page 21.

## ■ Changing the Document Print Settings

- (1) Click **Infrared/Bluetooth connection Print Settings** tab.
- (2) Click **Change** on **Document Print Settings**.  
The **Document Printing** dialog box appears.



- (3) Select the printing type for the document.

 **Note** Bible, Mini 6-hole and A5 size papers are used for a personal organizer.  
When Printing these papers:

- Select 3.66"×6.69"/93×170mm for **Bible**, 3.15"×4.96"/80×126mm for **Mini 6-hole** and 8.27"×5.83"/210×148mm for A5 as paper size.
- Load only one sheet at a time.
- Do not use paper thinner than 64 gsm or 17lb.

- (4) Click **Send**.

You can perform printing from a PDA or mobile phone with the specified media type and layout.

For details about printing from PDA or mobile phone, refer to the section "**Performing Infrared Communication**" on page 21.

 **Note** Click **Change** on **Document Printing** dialog to change the following settings.

**Time difference with GMT:** when printing time-specifiable data, such as a schedule, you can reflect the time difference by specifying the country in which the data was created.

**Language:** You can adopt the Language if incorrect text is printed.



**Note** Following limitations apply on transmittable data

- It does not support printing a downloaded content or photo and a photo attached to an email for security reason.
- It does not support printing video files.
- Depending on your device, the Fine print quality option may not be available due to the restriction on the infrared transfer capacity.
- Depending on your device, it may not print data stored in a memory card.
- It automatically sets the image quality and orientation (Portrait or Landscape) according to the image size.
- It automatically sets the margin according to the image size.
- Depending on the size of an image, it may take a while for this printer to start to print after starting the infrared transfer.



## ■ Performing Infrared Communication

When performing infrared communication, also refer to your computer, mobile phone or PDA manual.

### 1 Set up the Printer.

- (1) Ensure that the Universal AC Adapter is connected securely.  
When using the optional battery, ensure that it has been charged.
- (2) Open the Paper Support and turn on the printer.
- (3) Load the paper on the Paper Support.

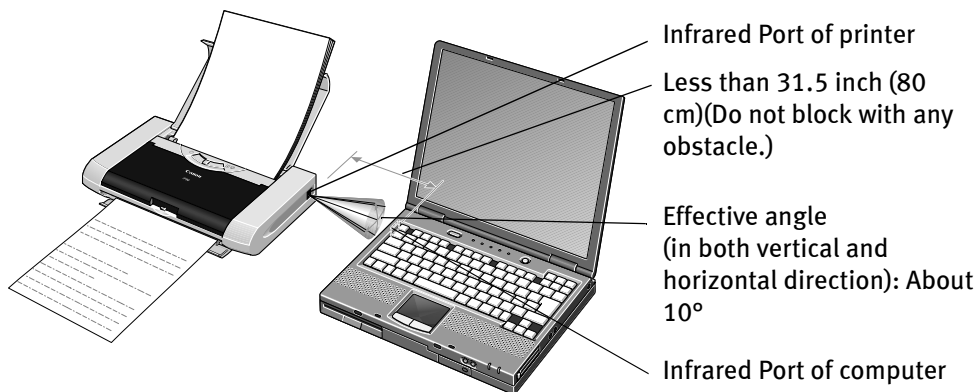
### 2 Start Infrared Communication.

- (1) Align the Infrared Port of the computer to that of the printer at a distance of less than 31.5 inch (80 cm). When printing from a mobile phone or PDA, place it at a distance of less than 7.87 inch (20 cm).

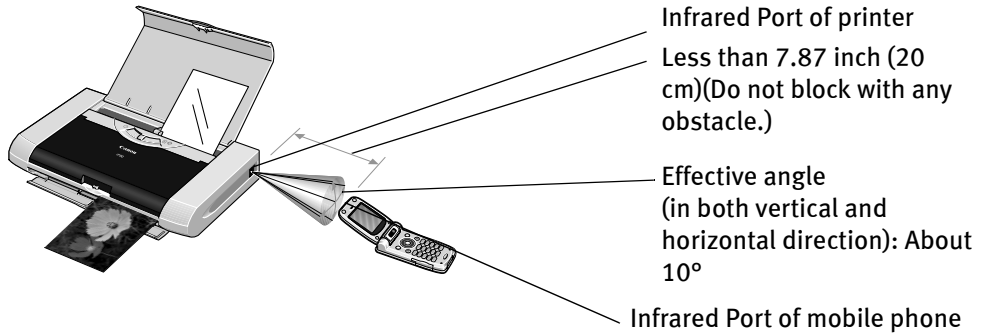
The effective angle of the Infrared Port of the printer is about 10° from the central axis in both vertical and horizontal directions.

The allowable distance of communication with the printer depends on the computer, mobile phone or PDA you use. For this distance, refer to your computer, mobile phone or PDA manual.

**When printing with the computer**



### When printing with a mobile phone or PDA




#### Note

- By pressing the RESUME/CANCEL button, you can print the same image data transmitted from the mobile phone right before.
- Do not place any obstacle between the Infrared Ports of the printer and PDA, mobile phone or computer. Data cannot be transmitted between them. Check the orientation and positions of the Infrared Ports of the printer, mobile phone and PDA or computer. Oppose these ports properly as mentioned above.
- During printing, be careful not to interrupt infrared communication with the printer. If it is interrupted, turn off the printer and cancel the printing document from the print queue list in case of the computer, and turn off only the printer in case of the mobile phone or PDA. Placing the pointer on the **Wireless Link** icon (In Windows 98, click the **Infrared** icon) on the status bar or **Control Panel** allows you to check whether the IrDA transmission has been interrupted.

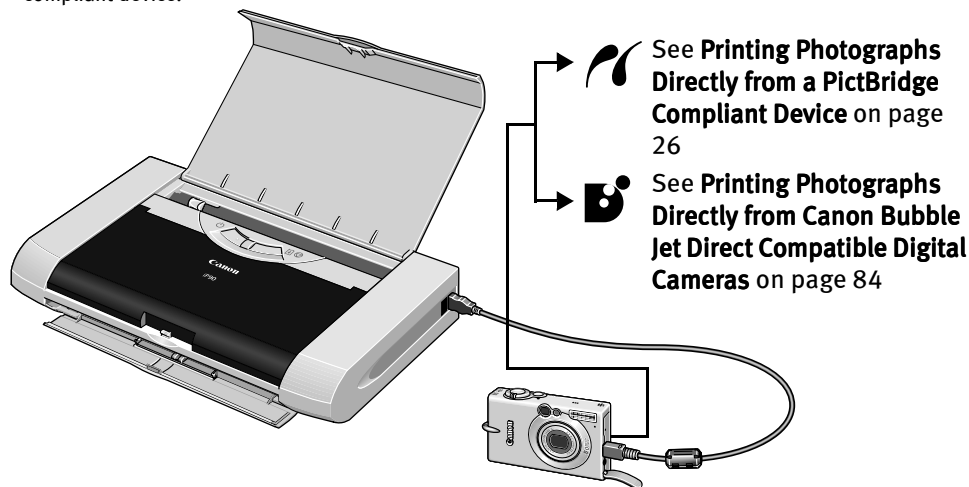
# Advanced Printing

## Printing Photographs Directly from a PictBridge Compliant Device

Connecting a PictBridge compliant device such as a digital camera, camcorder or mobile phone to the printer allows you to print recorded images directly without using a computer.

-  **Note**
- PictBridge is an Industry standard enabling a range of digital photo solutions, including the direct printing of photos from a digital still camera, digital camcorder or mobile phone\* without the need to use a computer.
  - Canon Bubble Jet Direct allows you to print photos from a Canon Bubble Jet Direct compatible (PictBridge incompatible) digital camera or digital camcorder without a computer by simply connecting the digital camera or digital camcorder to this printer.
- For details, refer to **"Printing Photographs Directly from Canon Bubble Jet Direct Compatible Digital Cameras"** on page 84


\* Hereafter, a digital still camera, digital camcorder and mobile phone are collectively called a PictBridge compliant device.



### ■ Connecting to a PictBridge Compliant Device

To connect a PictBridge compliant device to this printer, use the USB cable supplied with the device.

**Caution** Do not connect any equipment other than PictBridge compliant devices or Canon Bubble Jet Direct Compatible Digital Camera to the Direct Print Port of the printer. Otherwise, electric shock, fire, or damage to the device could result.

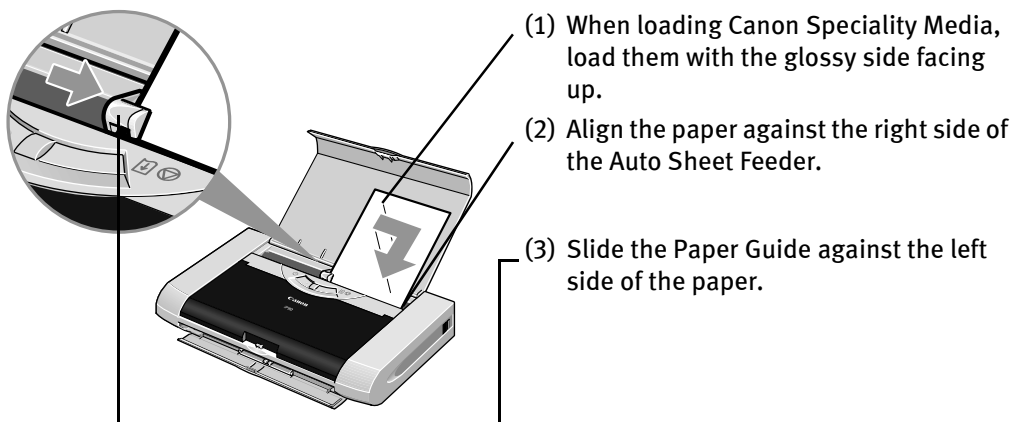
-  **Note**
- When printing photos with the digital device connected to the printer, it is advisable to use the AC adapter supplied with the device. If you use the device battery, be sure to charge it fully.
  - Depending on the model or brand of your device, you may have to select a mode of printing photos in compliance with PictBridge before connecting the device.  
You may also have to turn on the device or select Play mode manually after connecting the device to the printer.  
Perform necessary operations according to the instruction manual supplied with your device.
  - When printing from your PC, be sure to unplug the cable connecting the device.

## 1 Set up the printer

Ensure that the Universal AC Adapter is connected securely.  
If you do use a battery pack, ensure that it is fully charged.

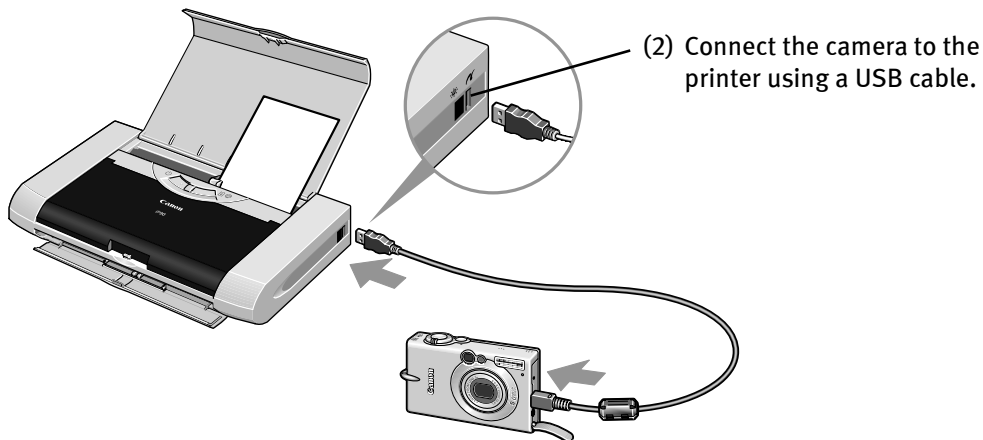
## 2 Open the Paper Support and turn on the printer.

- 3** Load 4"×6" paper into the Auto Sheet Feeder in the portrait position (short side facing down).



- 4** Connect the PictBridge compliant device to the printer.


- (1) Ensure that the device is turned off.



**Note** Some types of the device turn on automatically, when connected to the printer. For a device not turns on automatically, turn it on manually.

- (3) Turn on and set up the device for direct printing.

When the connection between the device and printer has been established, the POWER lamp on the printer flashes once.

 **Note** The power-on sequence may differ depending on the model or brand of the device.

Either one of the following icons will display on the LCD display of the device when the printer is correctly connected.



A PictBridge compatible device




A Canon Bubble Jet Direct compatible device

### ■ Printing Photographs Directly from a PictBridge Compliant Device

When operating the device, be sure to follow the instructions given in the instruction manual supplied with the camera. Let's take a look at the paper size, paper type, layout, image optimization modes, and date printing modes that can be set on a PictBridge compliant device connected to the printer.

#### ■ Default Device Settings

When a PictBridge compliant device is connected and printing is started with no printing option selected, this printer operates based on the following default settings:

 **Note** The Canon iP90 Setup Utility allows you to make these settings. For details, refer to the *User's Guide*.

- Paper size ..... 4"×6"
- Paper type ..... Photo (Photo Paper Plus Glossy)
- Layout ..... Borderless
- Trimming ..... Off (No trimming)
- Image optimize ..... Exif Print
- Date print ..... Off (No printing)

#### **Note About the Settings Explained Below**

The settings explained below cannot be made depending on the brand or model of your device. If a setting cannot be made, the default setting explained above is used.

Names of settings that are displayed on a Canon PictBridge compliant device are used in the description given below. Different names may be displayed on your device depending on the brand or model. For details, refer to your device's instruction manual.

## ■ About Image Data Format for Printing

This printer can handle only Exif/JPEG and PNG image data to produce photos.

## ■ About “Paper Size” and “Paper Type”

To change the paper size or paper type, operate your device to select the PictBridge print setup mode and confirm or change the settings.

By default, 4"×6" is selected in “Paper Size” and “Photo”(Photo Paper Plus Glossy) is selected in “Paper Type” for this printer. To use Photo Paper Pro, select “Fast Photo” in “Paper type”.

The following sizes and types of paper can be loaded in the printer by selecting options in “Paper Size” and “Paper Type”.

“Paper Size” setting	“Paper Type” setting	Paper loaded in printer
4"×6" (Default)	Photo (Default)	Photo Paper Plus Glossy Photo Paper Plus Semi-Gloss Glossy Photo Paper Photo Stickers*2
	Fast Photo	Photo Paper Pro
5"×7" *1	Photo	Photo Paper Plus Glossy
Credit Card	Photo	Glossy Photo Paper
8.5"×11" (Letter)*3	Photo	Photo Paper Plus Glossy Photo Paper Plus Semi-Gloss Glossy Photo Paper
	Fast Photo	Photo Paper Pro


\*1 This size can be selected only for Canon PictBridge compatible cameras (Note that it cannot be selected for some models).

\*2 This paper is exclusively used to print photo stickers. When printing on sticker paper, select “4"×6"” in “Paper Size.”

\*3 When you selected “8.5"×11"(Letter)” in “Paper Size”, you can select “Plain Paper” in “Paper Type”. When you selected “Plain Paper” in “Paper Type”, bordered printing will be performed even if you select “Borderless” in “Layout”.


## ■ About “Layout” and “Trimming”

By default, “Borderless” is selected in “Layout” and “Off (No trimming)” is selected in “Trimming” for this printer.

 **Note** When you using Photo Stickers (PS-101), do not set “Borderless Printing” in Layout setting.

### ■ About “Image optimize”


If you use a Canon PictBridge-compliant camera, you can select “VIVID”, “NR”, or “VIVID+NR”. (Note that these options cannot be selected for some models.)

-  **Note**
- When “VIVID” is selected, green and blue portions of photos are printed vividly.
  - When “NR” (Noise Reduction) is selected, noise in blue portions, such as the sky, and dark portions is removed.
  - When “VIVID+NR” is selected, functions of both “VIVID” and “NR” are performed.

### ■ About “Date print”

By default, “Off” is selected for this printer.


If you select an image which has had the shooting date embedded in it using a camera with the print mode, set that function to off. If you set this function to on, dates will appear twice on the printed image.

-  **Note**
- Never disconnect the USB cable during printing.
  - When disconnecting the USB cable between the device and printer, follow the instructions given in the instruction manual of the device.
  - Controls of the digital camera cannot be used for the following:
    - Print quality setting
    - Printer maintenance



## Accessing Printer Driver

The **Printer Properties** dialog box can be opened from either within an application, or directly from the Windows **Start** menu.

-  **Note**
- This manual refers to Windows XP SP2 operation. The operations may vary depending on your operating system.
  - Depending on your application program, the command and menu names may differ, and there may be more steps involved in opening the **Printer Properties** dialog box. For more details, see the user's manual for your application.

### ■ Opening the Printer Properties Dialog Box from Your Application Program

#### 1 In your application, select the command to print a document.

The **Print** dialog box can usually be opened by selecting **Print** from the **File** menu.

#### 2 Ensure that Canon iP90 is selected. Then click Preferences (or Properties).

The **Printer Properties** dialog box opens.

### ■ Opening the Printer Properties Dialog Box Directly from the Start Menu

This method is used for maintenance operations such as Print Head cleaning or to specify printer settings common to all application programs.

When the **Printer Properties** dialog box is opened from the **Start** menu, additional tabs appear including the **Details** tab. These do not appear when the **Printer Properties** dialog box is opened from within an application.

For more information about these additional tabs, refer to your Windows documentation.

#### 1 Click Start and select Control Panel, Printers and Other Hardware, and then Printers and Faxes.

For non-Windows XP users, click **Start**, select **Settings**, and then **Printers**.

#### 2 Select the Canon iP90 icon.

#### 3 Open the File menu and select Printing Preferences (or Properties).

The **Printer Properties** dialog box opens.

## Adjusting Print Quality for Photographs

### ■ Improving Printed Images

Two important factors control the quality and output of your printed images:

#### **Paper and Ink**

Using recommended Canon paper, speciality media and ink for printing photographs can significantly improve the quality of your printouts. See inside the back cover for a list of Canon media and inks for this printer.

For more detailed information, refer to "**Printing Media**" in the *User's Guide*.


#### **Printer Driver Settings**

The printer driver has a variety of settings that can be used to enhance the colors and output of your photographs. Many of these features are covered in this chapter.



**Note** You can also access the online help in either of the following ways depending on your operating system:

#### **Windows**

- Press the F1 key
- Click  in the upper right corner, then click the feature you want to know more about.
- Click **Help** when displayed.

#### **Macintosh**

- Click  in the **Page Setup** dialog box or the **Print** dialog box.

### ■ Adjusting Print Quality

Features that affect the appearance and quality of your printed images can be controlled with the printer driver.

PIXMA iP90 automatically adjusts printer settings to improve print quality based on the media type (plain paper, Photo Paper Pro, and so on). You can also customize **Print Quality** settings if desired.

**To manually adjust Print Quality settings:**

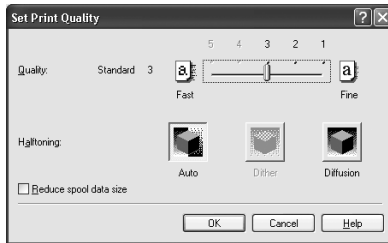
#### **Windows**

- 1** Open the Printer Properties dialog box.

See "**Opening the Printer Properties Dialog Box from Your Application Program**" on page 29.

**2** Select Custom in Print Quality, then click Set to open the Set Print Quality dialog box.

**3** Move the slide bar to adjust the Print Quality.



**4** When the process is complete, click OK.

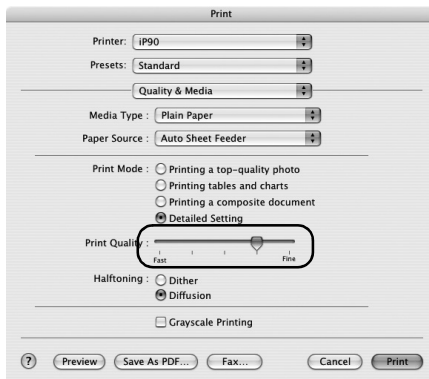
## Macintosh

**1** Open the Print dialog box.

See "Printing with Macintosh" on page 12.

**2** Select Quality & Media from the pop-up menu, and then click Detailed Setting.

**3** Move the slide bar to adjust the Print Quality.



**4** When the process is complete, click OK.

### To automatically optimize the image:

**Photo Optimizer PRO** automatically adjusts the photographic image created with a digital camera. Use this feature to compensate for unsatisfactory color balance and over- or under-exposure before printing.

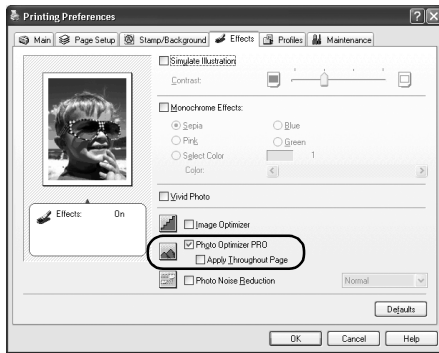
## Windows

### 1 Open the Printer Properties dialog box.

See "**Opening the Printer Properties Dialog Box from Your Application Program**" on page 29.

### 2 Click the Effects tab.

### 3 Select the Photo Optimizer PRO check box.



### 4 Click OK.

## To use Vivid Photo option:

**Vivid Photo** intensifies the background colors found in photos that have fields, trees, oceans and skies while maintaining natural skin tones in the images.

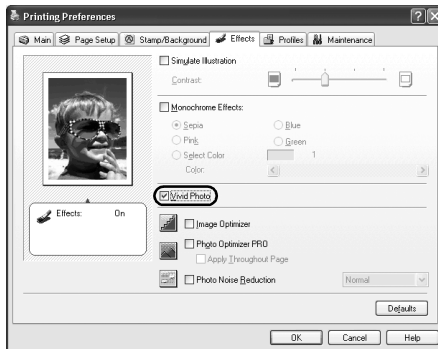


### Note In Windows Me or Windows 98

If Background Printing has been disabled, the Vivid Photo function is not available.

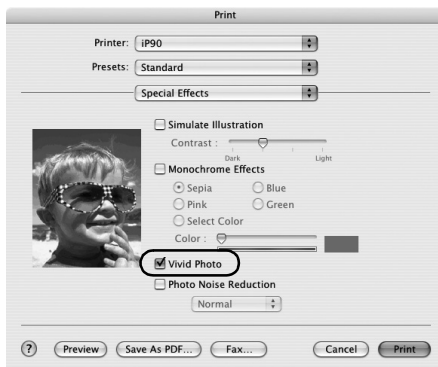
## Windows

To use Vivid Photo, select the **Vivid Photo** check box on the **Effects** tab.



## Macintosh

To use Vivid Photo, select the **Vivid Photo** check box under **Special Effects**.



### To reduce noise from images captured with a digital camera:

**Photo Noise Reduction** function reduces noise from blue portions such as those found in the skies and dark portions of images captured with a digital camera.

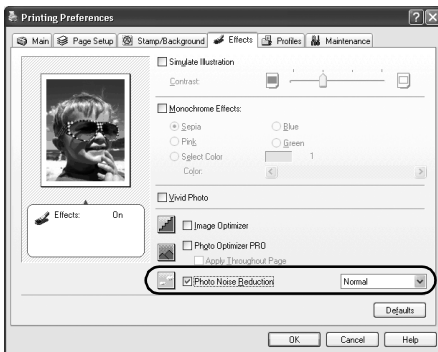


#### **Note In Windows Me or Windows 98**

If Background Printing has been disabled, the Photo Noise Reduction function is not available.

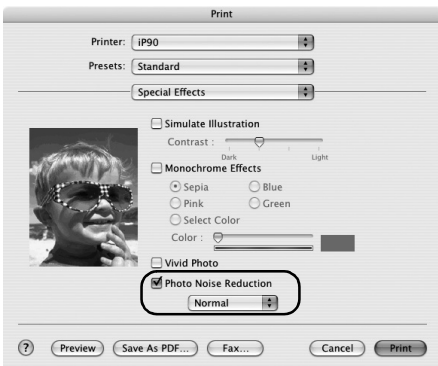
## Windows

To use Photo Noise Reduction, select the **Photo Noise Reduction** check box on the **Effects** tab.



## Macintosh

To use Photo Noise Reduction, select the **Photo Noise Reduction** check box under **Special Effects**.



## ■ Saving and Recalling Driver Settings

When you change printer driver settings for a specific print job, such as printing black and white photos or printing documents with a special background, you can save and name these settings for future use on similar print jobs.

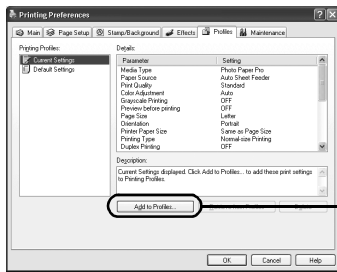
### Windows

#### 1 Open the Printer Properties dialog box.

See "Opening the Printer Properties Dialog Box from Your Application Program" on page 29.

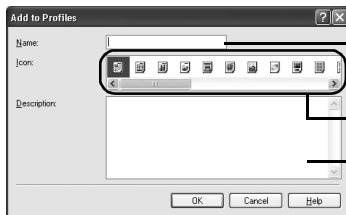
#### 2 Click the Profiles tab.

#### 3 Enter new settings in Profiles.



(1) Click **Add to Profiles**.

The **Add to Profiles** dialog box opens.



(2) Enter a name of profile for registering the settings.


(3) Select an icon.

(4) Enter a description on the registering profile.

#### 4 Click OK.

#### 5 Click OK on the Profiles tab.

This registers your printer driver print settings.

 **Note** You can retrieve or delete the print settings profile at any time.

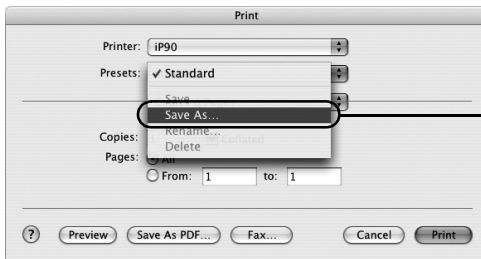
**Retrieving profile:** Select the desired profile from **Printing Profiles**, and click **Retrieve** from **Profiles**.

**Deleting unwanted profile:** Select the desired profile from **Printing Profiles**, and click **Delete**.

For details, click **Help** and refer to the topic of this function.

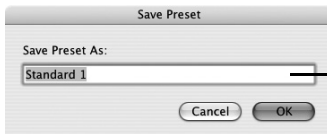
### Macintosh

- 1 Open the Print dialog box.  
See "Printing with Macintosh" on page 12.
- 2 Select all of the necessary settings.
- 3 Register new printer driver settings.




(1) Select **Save As** from the pop-up menu.

Save Preset dialog box opens.



(2) Enter a name of your printer driver settings.

- 4 Click OK.  
This registers your printer driver settings.

 **Note** You can retrieve or change the saved printer driver settings any time.


**Retrieving print settings:** Select the name of the print settings to retrieve from the **Presets** in the **Print** dialog box.

**Changing drivers settings:** When registered print settings are selected, you can delete them or change their name.



## Using the Bundle Software

The *Setup Software & User's Guide CD-ROM* includes photo applications designed to edit the photographs taken by a digital camera and print them as photo-lab quality prints. Please use the application(s) suitable for your print purposes.

-  **Note**
- To install applications, refer to the *Easy Setup Instructions*.
  - For details about photo applications, refer to the *Photo Application Guide*.

### ■ Easy-PhotoPrint (Windows/Macintosh)

You can make a Borderless Print easily and quickly, just by selecting a photograph taken with a digital camera and the paper type on which to print. Also it has tools to correct red eye caused by the camera's flash or smooth and beautify facial skin. It is compatible with Exif Print\*.

### ■ PhotoRecord (Windows)

You can create fun and unique photo albums with decorative themes such as frame, background, and clip-art. You can also copy or move decorated photos. It is compatible with Exif Print\*.

### ■ Easy-WebPrint (Windows)

You can easily print out homepages displayed on Internet Explorer in full size without its right-hand side being cropped. This application is automatically added to the Internet Explorer toolbar. Internet Explorer 5.5 or later must be installed.

For more information on the applications, refer to the *Photo Application Guide*.

\* Exif Print is the worldwide standard. Under Exif Print, the digital camera can record data tags for specific camera settings and functions such as whether the flash was on or off, if the camera was in portrait or night scene mode, etc.


Canon PIXMA Printers support Exif Print and use a suitable photo application to read the camera data precisely, producing optimal prints. This enables you to create prints that reproduce color more accurately.

## Printing Borderless Photographs

This chapter describes the steps used to print from photo applications included with your *Setup Software and User's Guide CD-ROM* using the Borderless Printing mode.

### **Note** Media Types Suitable for Borderless Printing

- Photo Paper Plus Glossy (LTR, 4"×6", 5"×7")
- Photo Paper Plus Semi-Gloss (LTR, 4"×6")
- Photo Paper Plus Double Sided (LTR, 5"×7")
- Photo Paper Pro (LTR, 4"×6")
- Matte Photo Paper (LTR, 4"×6")
- Glossy Photo Paper (LTR, 4"×6", Credit Card)

 **Note** You can edit images taken with a digital camera by using the Red-Eye Correction function and Digital Face Smoothing function and print them with Easy-PhotoPrint. For more information, refer to the *Photo Application Guide*.

Follow the steps below to create color prints of digital camera photographs with Easy-PhotoPrint using the Borderless Printing function. This chapter describes the steps used to print borderless photos with Easy-PhotoPrint under Windows XP. The steps used under Macintosh are basically the same. Easy-PhotoPrint supports Exif Print. Easy-PhotoPrint can handle only JPEG files (file name extension: .jpg and .jpeg).

### **1** Start Easy-PhotoPrint.

- (1) Store the photographs you took with your digital camera in a folder on the hard disk.

This section describes how to print photographs stored in the folder on the hard disk.

- (2)  Click **Start**, select **All Programs** (or **Programs**), **Canon Utilities**, **Easy-PhotoPrint**, and then **Easy-PhotoPrint**.



Double-click the hard disk icon, the **Applications** folder, the **Easy-PhotoPrint** folder, and then double-click the **Easy-PhotoPrint** icon.

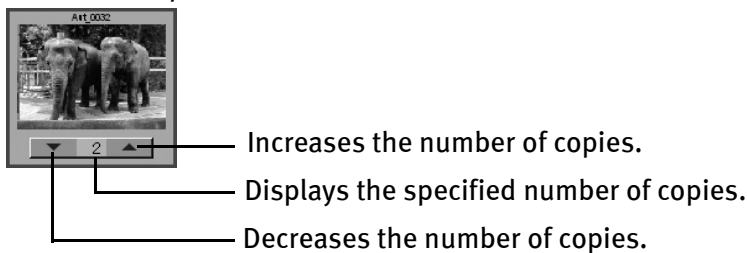
The  **Image Selection** sheet is displayed.

## 2 Select photographs.

- (1) Select the folder containing the photograph you want to print. All photographs in the selected folder are displayed.

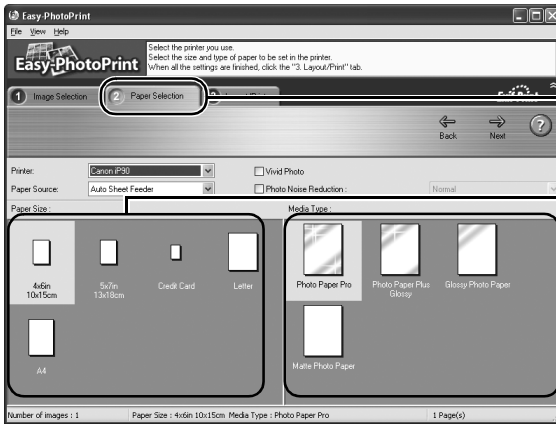


- (2) Click [▲] on the thumbnail of the photograph you want to print and specify the number of copies.



 **Note** Clicking the **Correct/Enhance** button on the **1 Image Selection** tab allows you to edit and enhance the photos to be printed. For more information, refer to the *Photo Application Guide*.

### 3 Select the paper.




- (1) Click the **2 Paper Selection** tab.
- (2) Select the size of paper you use from **Paper Size**.
- (3) Select the type of paper you use from **Media Type**.

### 4 Select the layout.



- (1) Click the **3 Layout/Print** tab.
- (2) Select **Borderless (full)**.

 **Note** Clicking the **Correct/Enhance** button on the **3 Layout/Print** tab allows you to edit and enhance the photos to be printed. For more information, refer to the *Photo Application Guide*.

(3) Load the media specified in the **2 Paper Selection** tab.

(4) **Windows**  
Click **Print**.

**Macintosh**

Click **Print**. When the confirmation message is displayed, click **OK**. Click **Print** in the **Print** dialog box.

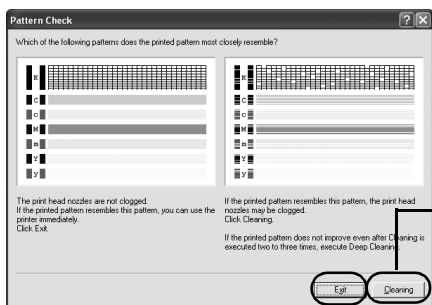
# Printing Maintenance

## When Printing Becomes Faint or Colors are Incorrect

When printing becomes faint or colors are incorrect, the Print Head Nozzles are probably clogged. Follow the procedures below to clean the nozzles.

### Step 1

"Printing the Nozzle Check Pattern" on page 42



After Print Head cleaning, print the nozzle check pattern.

If the print quality is poor, perform a Print Head cleaning

If the pattern is printed normally, click Exit.

### Step 2

"Print Head Cleaning" on page 47

If the problem remains after performing Print Head cleaning three times

### Step 3

"Print Head Deep Cleaning" on page 52

If the problem still remains

### Step 4

"Replacing an Ink Tank" on page 61




#### Note

- If ruled lines are printed misaligned, adjust the Print Head position. See "Aligning the Print Head" on page 57.
- If ink tank replacement does not resolve the problem, the Print Head may be worn out. Contact the Customer Care Center.

# Printing the Nozzle Check Pattern

Print the nozzle check pattern to determine whether the ink ejects properly from the Print Head Nozzles. Use this function when printed results are blurred or the color is incorrect.

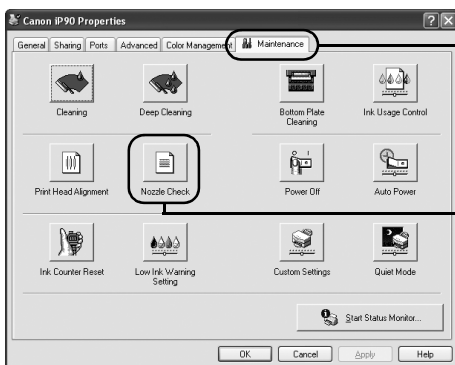
 **Note** The nozzle check pattern can also be printed by pressing the **RESUME/CANCEL** button on the printer.

- (1) Ensure that the printer is turned on, and then load a sheet of Letter paper.
- (2) Hold down the **RESUME/CANCEL** button until the **POWER** lamp flashes twice, and then release it immediately.

## ■ Printing the Nozzle Check Pattern

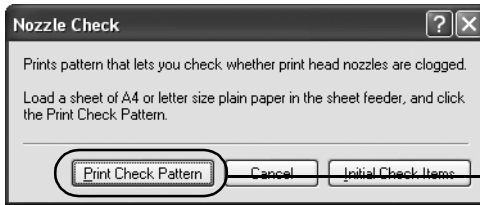
### Windows

- 1 With the printer on, load a sheet of Letter-sized plain paper in the printer.
- 2 Open the **Printer Properties** dialog box.  
See "**Opening the Printer Properties Dialog Box Directly from the Start Menu**" on page 29.
- 3 Print the Nozzle Check Pattern.



(1) Click the **Maintenance** tab.

(2) Click **Nozzle Check**.



(3) Click **Print Check Pattern**.



**Note** Click the **Initial Check Items** button. Confirmation message for printing the nozzle check pattern is displayed.

(4) When the confirmation message is displayed, click **OK**.


(5) Confirm the nozzle check pattern.

See "**Examining the Nozzle Check Pattern**" on page 45.

## Macintosh

**1** With the printer on, load a sheet of Letter-sized plain paper in the printer.

**2** Open the **BJ Printer Utility** dialog box.

 **Note** The BJ Printer Utility cannot be used with Bluetooth communication.

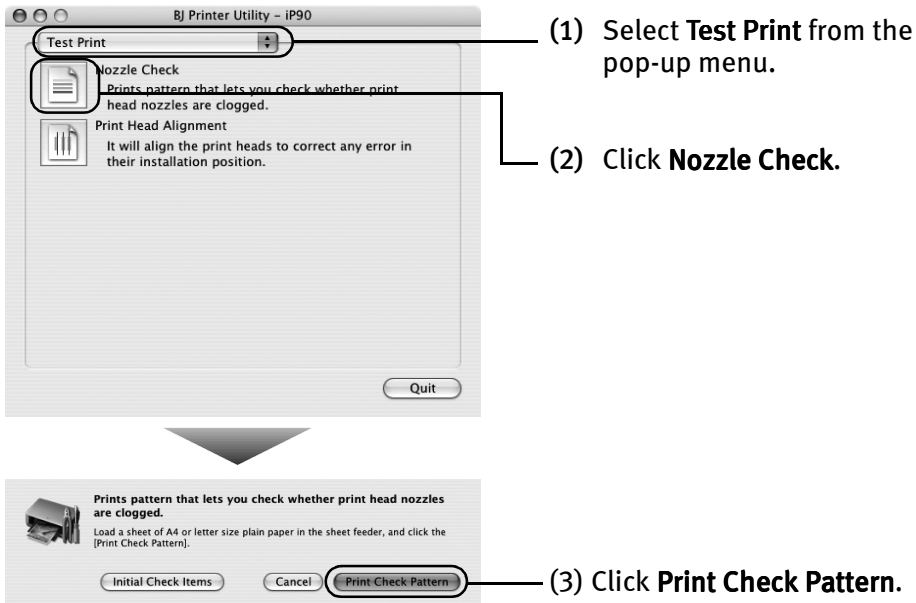
(1) Double-click the hard disk icon where the printer driver was installed, the **Applications** folder, and then the **Utilities** folder.

(2) Double-click the **Printer Setup Utility** icon.  
If you are using an OS other than Mac OS X v.10.3, double-click the **Print Center** icon.

(3) Select **iP90** from the **Name** list and click **Utility** or **Configure**.

(4) Select **iP90** from the **Product** list and click **Maintenance**.

### 3 Print the Nozzle Check Pattern.



 **Note** Click the **Initial Check Items** button. Confirmation message for printing the nozzle check pattern is displayed.


(4) Confirm the nozzle check pattern.

See "**Examining the Nozzle Check Pattern**" on page 45.



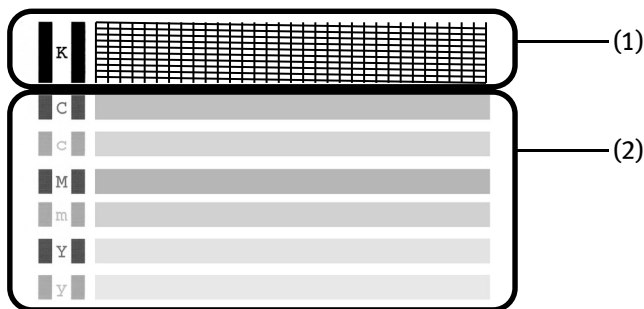
## ■ Examining the Nozzle Check Pattern

The nozzle check pattern should appear as follows when ink is discharged properly. Examine the nozzle check pattern output by the printer.

 **Note** If the ink level is low, the nozzle check pattern is not printed properly. Replace an ink tank.

See "**Replacing an Ink Tank**" on page 61.

### 1 Confirm the printed nozzle check pattern.



- (1) Lines missing in this pattern indicate that the Print Head of black ink requires cleaning.

When with lines missing (black ink)

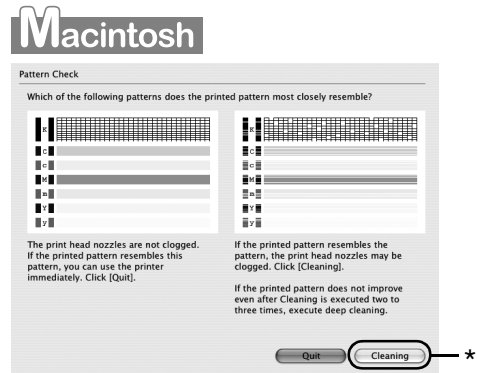
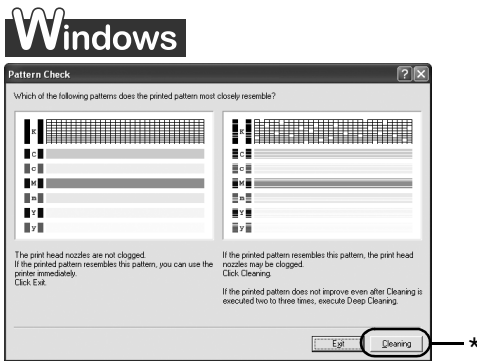


- (2) White stripes in this pattern indicate that the Print Head of color ink requires cleaning.

When white stripes appear (color ink)



### 2 When cleaning is necessary, click the **Cleaning** button on the **Pattern Check** dialog.




\*Click the **Cleaning** button on the **Pattern Check** screen to proceed to Print Head cleaning.

See "**Print Head Cleaning**" on page 47.

If there are neither missing lines nor white stripes in the nozzle check pattern, click **Exit** (Windows) or **Quit** (Macintosh) to finish the nozzle check.

# Print Head Cleaning

If missing lines or white stripes are found in the printed nozzle check pattern, perform Print Head cleaning to unclog the Print Head Nozzles. Cleaning the Print Head consumes ink, so perform Print Head cleaning only when necessary.

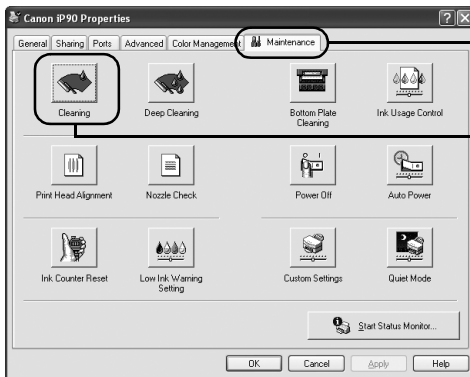
-  **Note**
- The Print Head can also be cleaned by pressing the **RESUME/CANCEL** button on the printer.
    1. Ensure that the printer is turned on.
    2. Hold down the **RESUME/CANCEL** button until the **POWER** lamp flashes once, and then release it.
  - If you pressed the Cleaning button on the Examining the Nozzle Check Pattern screen displayed after the nozzle check pattern was printed, start the Print Head cleaning procedure from 3-(3).

## Windows

- 1** Ensure that the printer is turned on.
- 2** Open the Printer Properties dialog box.

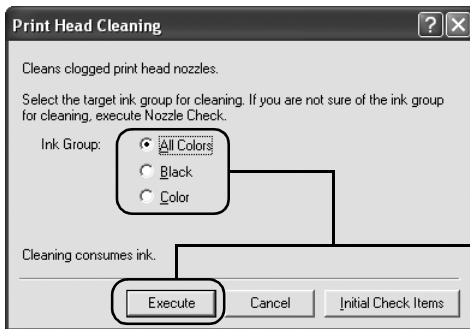
See "**Opening the Printer Properties Dialog Box Directly from the Start Menu**" on page 29.

### 3 Start Print Head Cleaning.



(1) Click the **Maintenance** tab.

(2) Click **Cleaning**.



(3) Select the ink nozzle group to be cleaned, then click **Execute**.



#### Note

Click the **Initial Check Items** button. Confirmation message for Print Head Cleaning is displayed.

(4) When the confirmation message is displayed, click **OK**.

Print Head cleaning starts when the POWER lamp starts blinking.

**Important** Do not perform any other operations until the Print Head cleaning finishes. This takes about 60 seconds.

## 4 Check the Print Head condition.

- (1) Click **Print Check Pattern** in the Nozzle Check dialog appeared after cleaning is complete.

When the confirmation message is displayed, click OK.

A nozzle check pattern will be printed.


Do not perform any operation until printing of the nozzle check pattern is completed.

- (2) Observe the printed nozzle check pattern to check the Print Head condition.  
See "**Examining the Nozzle Check Pattern**" on page 45.
- (3) If the problem persists after you performed Print Head normal cleaning three times, execute Print Head deep cleaning.  
See "**Print Head Deep Cleaning**" on page 52.

## Macintosh

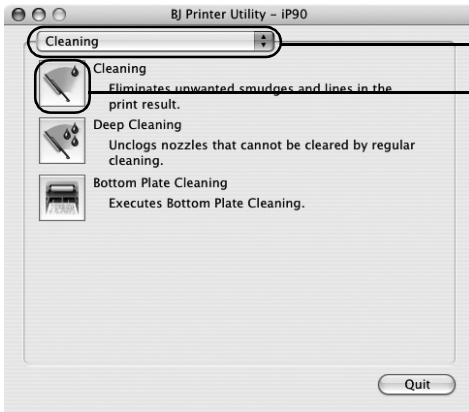
### 1 Ensure that the printer is turned on.

### 2 Open the BJ Printer Utility dialog box.

 **Note** The BJ Printer Utility cannot be used with Bluetooth communication.

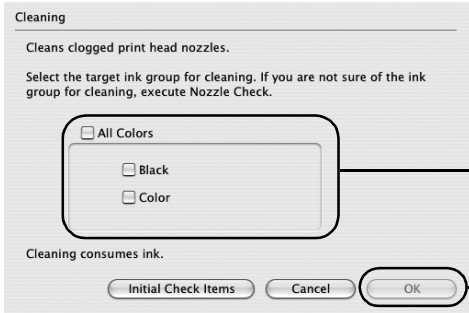
- (1) Double-click the hard disk icon where the printer driver was installed, the **Applications** folder, and the **Utilities** folder.
- (2) Double-click the **Printer Setup Utility** icon.  
If you are using an OS other than Mac OS X v.10.3, double-click the **Print Center** icon.
- (3) Select **iP90** from the **Name** list and click **Utility** or **Configure**.
- (4) Select **iP90** from the **Product** list and click **Maintenance**.

### 3 Start Print Head Cleaning.




(1) Select **Cleaning** from the pop-up menu.

(2) Click **Cleaning**.



(3) Select the ink nozzle group to be cleaned, then click **OK**.

 **Note** Click the **Initial Check Items** button. Confirmation message for Print Head Cleaning is displayed.

Print Head cleaning starts when the POWER lamp starts blinking.

**Important** Do not perform any other operations until the Print Head cleaning finishes. This takes about 60 seconds.

## 4 Check the Print Head condition.

- (1) Click **Print Check Pattern** in the dialog appeared after cleaning is complete.

A nozzle check pattern will be printed.

Do not perform any operation until printing of the nozzle check pattern is completed.

- (2) Observe the printed nozzle check pattern to check the Print Head condition.

See "**Examining the Nozzle Check Pattern**" on page 45.

- (3) If the problem persists after you performed Print Head normal cleaning three times, execute Print Head deep cleaning.

See "**Print Head Deep Cleaning**" on page 52.

## Print Head Deep Cleaning

If print quality does not improve by standard Print Head cleaning, try Print Head deep cleaning, which is a more powerful process. Print Head deep cleaning consumes more ink than standard Print Head cleaning, so perform this procedure only when necessary.

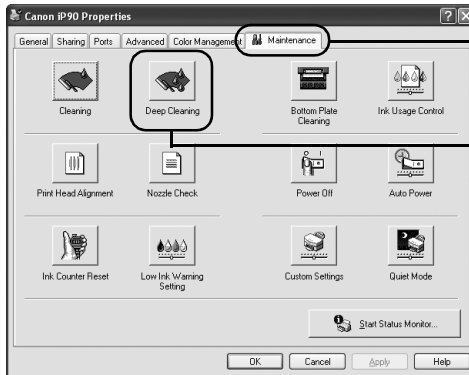
### Windows

- 1** Ensure that the printer is turned on.
- 2** Open the Printer Properties dialog box.

See "**Opening the Printer Properties Dialog Box Directly from the Start Menu**" on page 29.

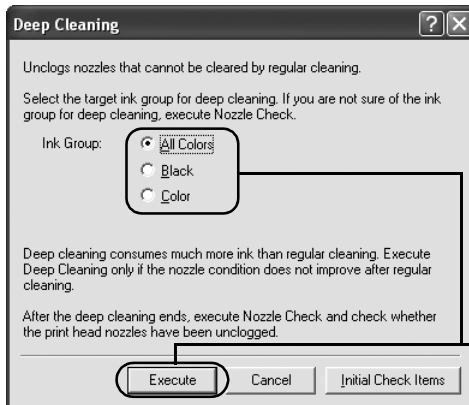


### 3 Start Print Head Deep Cleaning.



(1) Click the **Maintenance** tab.

(2) Click **Deep Cleaning**.



(3) Select the ink nozzle group to be cleaned, then click **Execute**.



**Note**

Click the **Initial Check Items** button. Confirmation message for Print Head Deep Cleaning is displayed.

(4) When the confirmation message is displayed, click **OK**.  
Print Head deep cleaning starts when the **POWER** lamp starts blinking.

**Important** Do not perform any other operations until the Print Head deep cleaning is completed (about two to three minutes).


### 4 Check the Print Head condition.

- (1) Print a nozzle check pattern to check the Print Head condition.  
See "**Printing the Nozzle Check Pattern**" on page 42.
- (2) If the problem persists, perform step 3 again.
- (3) If the problem persists, the printer may have run out of ink.  
See "**Replacing an Ink Tank**" on page 61.
- (4) If the problem persists, the Print Head may be damaged. Contact the Canon Customer Care Center.

## Macintosh

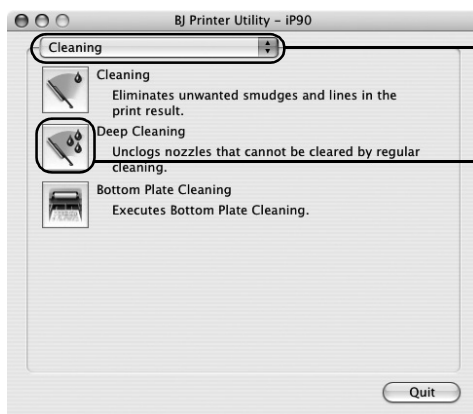
### 1 Ensure that the printer is turned on.

### 2 Open the BJ Printer Utility dialog box.

 **Note** The BJ Printer Utility cannot be used with Bluetooth communication.

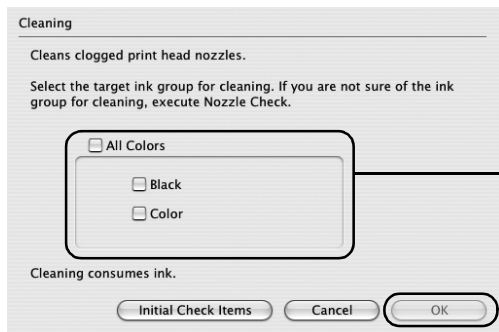
- (1) Double-click the hard disk icon where the printer driver was installed, the **Applications** folder, and then the **Utilities** folder.
- (2) Double-click the **Printer Setup Utility** icon.  
If you are using the OS other than Mac OS X v.10.3, double-click the **Print Center** icon.
- (3) Select **IP90** from the **Name** list and click **Utility** or **Configure**.
- (4) Select **IP90** from the **Product** list and click **Maintenance**.

### 3 Start Print Head Deep Cleaning.




(1) Select **Cleaning** from the pop-up menu.

(2) Click **Deep Cleaning**.



(3) Select the ink nozzle group to be cleaned, then click **OK**.

 **Note** Click the **Initial Check Items** button. Confirmation message for Print Head Deep Cleaning is displayed.

Print Head deep cleaning starts when the POWER lamp starts blinking.

**Important** Do not perform any other operations until the Print Head deep cleaning finishes. This takes about two to three minutes.

### **4** Check the Print Head condition.

- (1) Print a nozzle check pattern to check the Print Head condition.

See "**Printing the Nozzle Check Pattern**" on page 42.

- (2) If the problem persists, perform step 3 again.

- (3) If the problem persists, the printer may have run out of ink.

See "**Replacing an Ink Tank**" on page 61.

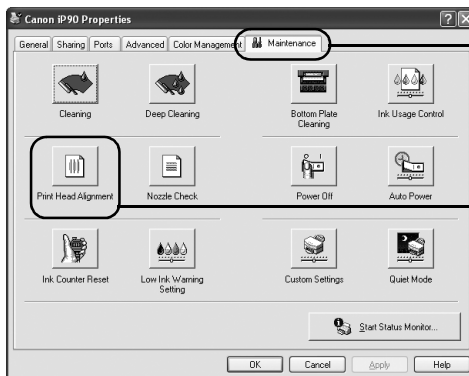
- (4) If the problem persists, the Print Head may be damaged. Contact the Canon Customer Care Center.

# Aligning the Print Head

If ruled lines are displaced or the print result is unsatisfactory, Print Head alignment is required.

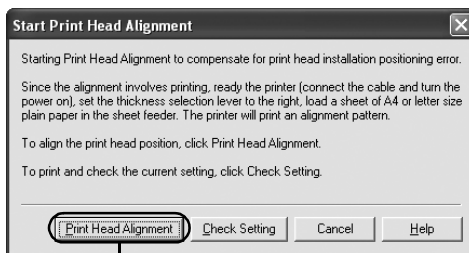
## Windows

- 1 With the printer on, load a sheet of Letter-sized plain paper in the printer.  
Move the Paper Thickness Lever (gray) to the right position.
- 2 Open the Printer Properties dialog box.  
See "**Opening the Printer Properties Dialog Box Directly from the Start Menu**" on page 29.
- 3 Print the pattern.




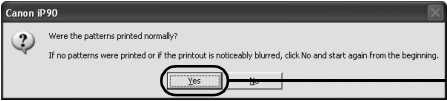
(1) Click the **Maintenance** tab.

(2) Click **Print Head Alignment**.



(3) Click **Print Head Alignment**.  
When the confirmation message is displayed, click **OK**.  
The pattern will be printed.

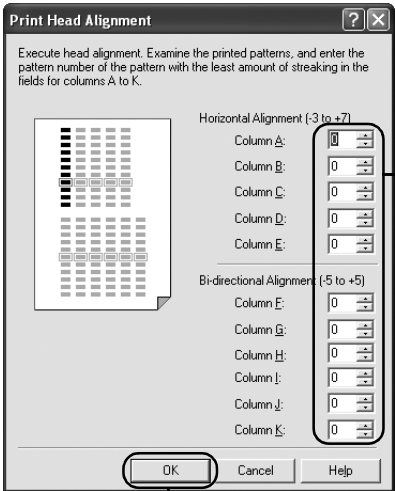
 **Note** Click **Check Setting** to print the current setting and finish the operation.



(4) After the pattern is printed, click **Yes**.


# 4 Align the Print Head.

(1) Look at the print out. From the patterns, select the most even, least irregular patterns.



(2) Enter the numbers.

(3) Click **OK**.

 **Note** If it is difficult to pick up the best pattern on Column H, pick the setting that produces the least noticeable vertical white stripes.





Less noticeable white stripes


More noticeable white stripes

(4) When the confirmation message is displayed, click **OK**.

## Macintosh

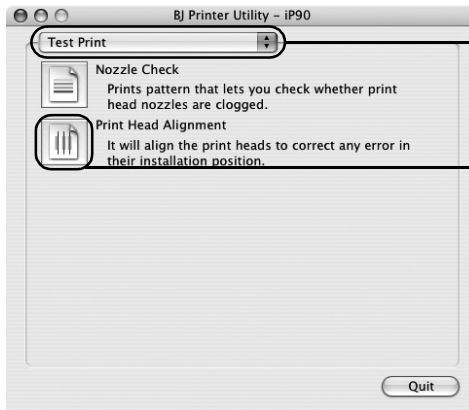
- 1 With the printer on, load a sheet of Letter-sized plain paper in the printer. Move the Paper Thickness Lever (gray) to the right position.

- 2 Open the BJ Printer Utility dialog box.

 **Note** The BJ Printer Utility cannot be used with Bluetooth communication.

- (1) Double-click the hard disk icon where the printer driver was installed, the **Applications** folder, and the **Utilities** folder.
- (2) Double-click the **Printer Setup Utility** icon.  
If you are using an OS other than Mac OS X v.10.3, double-click the **Print Center** icon.
- (3) Select **iP90** from the **Name** list and click **Utility** or **Configure**.
- (4) Select **iP90** from the **Product** list and click **Maintenance**.

- 3 Print the pattern.




- (1) Select **Test Print** from the pop-up menu.

- (2) Click **Print Head Alignment**.

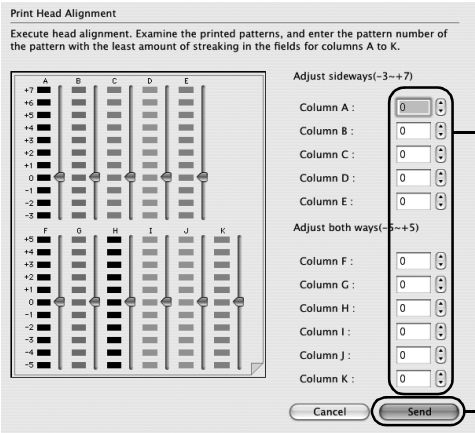


- (3) Click **Print Head Alignment**. The pattern will be printed.


 **Note** Click **Check Setting** to print the current setting and finish the operation.

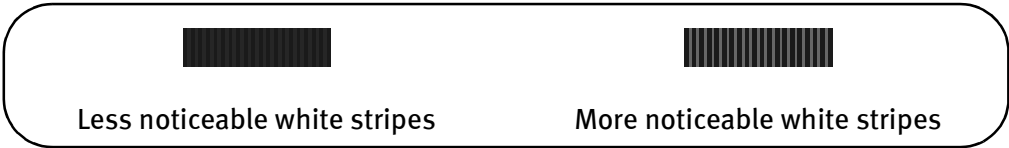
4 Align the Print Head.

- (1) Look at the print out. From the patterns, select the most even, least irregular patterns.



(2) Enter the numbers.

 **Note** If it is difficult to pick up the best pattern on Column H, pick the setting that produces the least noticeable vertical white stripes.





## Replacing an Ink Tank

If the print result is not improved after maintenance such as Print Head cleaning, an ink tank runs out of ink. Replace the ink tank with a new one. When replacing an ink tank, check the model number very carefully. The printer will not print properly if the wrong ink tank is used, or installed in the incorrect position.

Black: BCI-15 Black



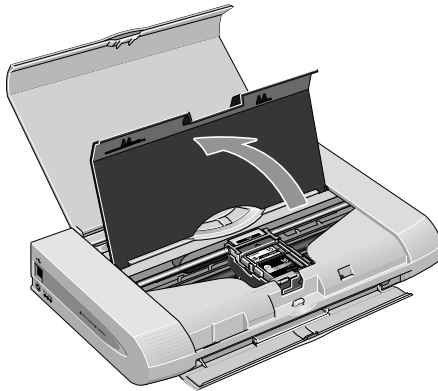
Color: BCI-16 Color



### ■ Replacing an Ink Tank

When an ink tank runs out of ink, replace it using the following steps.

- 1** Ensure that the printer is turned on, and then open the Print Head Cover.  
The Print Head Holder moves to the center.

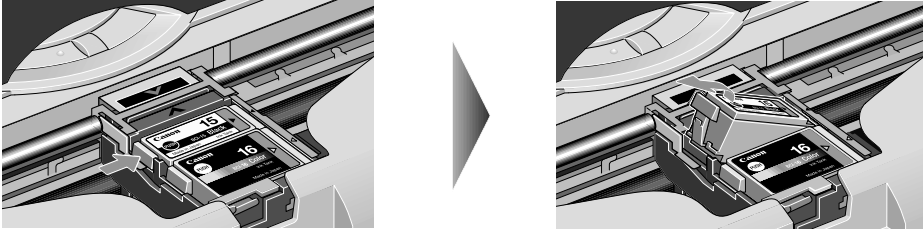


### 2 Remove the empty ink tank.

- (1) Push the tab.
- (2) Remove the ink tank.

Then lift it from its slot.

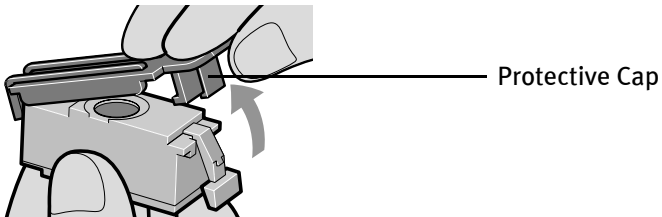
Do not touch the Lock lever; remove only the ink tank.



- Important**
- Handle ink tanks carefully to avoid staining your clothes or surrounding area.
  - Discard empty ink tanks according to the local laws and regulations regarding disposal of consumables.

### 3 Prepare a replacement ink tank.

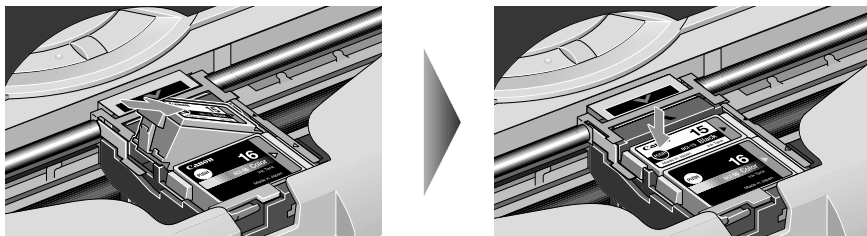
- (1) Unpack a new ink tank and remove the orange Protective Cap.



- Important**
- Do not re-attach the Protective Cap once you have removed it.
  - Once the Protective Cap is removed, do not touch the open ink port.

## 4 Insert the ink tank.

- (1) Insert a new ink tank with it slightly slanted.
- (2) Push down on the **PUSH** on the ink tank until it clicks into place.



## 5 Close the Print Head Cover.

The Print Head Holder moves to the right.

**Important** When an ink tank is replaced, the ink counter must be reset.

See "**Resetting the Ink Counter**" on page 64

- Note**
- To maintain optimal print quality, use an ink tank within six months of its first use.
  - Once an ink tank has been used, do not remove it from the printer and leave it out in the open. This will cause the ink tank to dry out and the printer may not function properly if it is reinstalled.
  - Color ink consumption may occur even when black-and-white or grayscale printing is specified.  
Color ink is consumed in the head cleaning and deep cleaning, which are necessary to maintain the printer's capabilities.
  - When an ink tank runs out of ink, replace the ink tank with a new one immediately.  
If printing is continued with no ink in the ink tank, a problem may occur. And, the Low Ink Warning dialog which tells the exchange time of the ink tank cannot be indicated properly.

### ■ Resetting the Ink Counter

When an ink tank is replaced, the ink counter must be reset.

The low ink warning is only displayed properly if the ink counter is reset.

## Windows

### Message Prompting Confirmation of Ink Tank Replacement

If an ink tank is removed, the printer will send a message prompting you to confirm replacement of the ink tank at the start of the next print job.

When an ink tank has been replaced, follow the procedure below to reset the ink counter. The low ink warning is only displayed properly if the ink counter is reset.

**Important** If infrared communication is performed in Windows XP or Windows 2000, the printer will not send the message asking for confirmation of ink tank replacement.

This is why it is important to open the printer driver's Properties dialog box and manually reset the ink tank counter in the Maintenance tab whenever an ink tank is replaced.

#### 1 Check the message, and click Yes.

Mistakenly clicking **No**, instead, will prevent the low ink warning from functioning properly. If this happens, be sure to open the driver's Properties dialog box and manually reset the ink tank counter in the Maintenance tab.

See "**Resetting the Ink Counter in the Printer Properties dialog box**" on page 65



#### 2 Select the replaced ink tank, and click OK.

The dialog box allows you to select the replaced ink tank.

When both black and color ink tanks have been replaced, select both Black and Color.

If you have not replaced the ink tank with a new one, click **Cancel**.



## Resetting the Ink Counter in the Printer Properties dialog box

### Windows

- 1 Open the **Printer Properties** dialog box and click the **Maintenance** tab.


See "Opening the Printer Properties Dialog Box Directly from the Start Menu" on page 29

- 2 Click **Ink Counter Reset**.

- 3 Select the newly installed ink tank, then click **OK**.

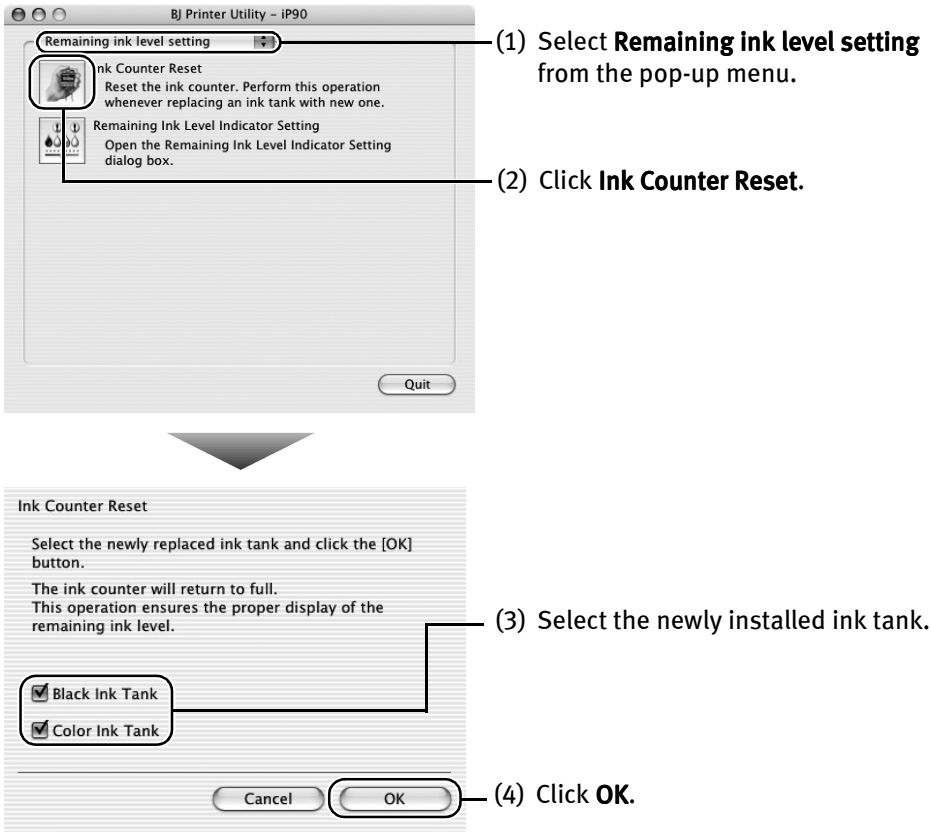
### Macintosh

- 1 Open the BJ Printer Utility dialog box.

 **Note** The BJ Printer Utility cannot be used with Bluetooth communication.

- (1) Double-click the hard disk icon where the printer driver was installed, the **Application** folder, and the **Utilities** folder.
- (2) Double-click the **Printer Setup Utility** icon.  
If you are using an OS other than Mac OS X v.10.3, double-click the **Print Center** icon.
- (3) Select **iP90** from the **Name** list and click **Utility** or **Configure**.
- (4) Select **iP90** from the **Product** list and click **Maintenance**.

### 2 Reset the Ink Counter.



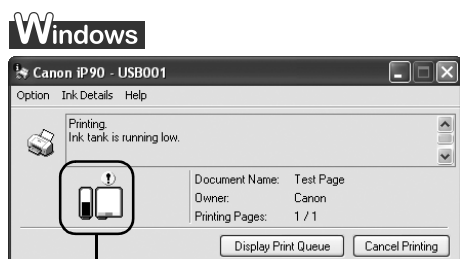
## ■ How Low Ink Warning Setting Works

The low ink warning notifies you of low ink levels during printing. The Low Ink Warning has been preset to be automatically displayed.

When you reset the ink counter, it will assume that the ink tank is full regardless of how much ink actually remains. The reset is the only way to match the counter value with an actual ink volume. Reset the ink counter when installing a new ink tank.

## Low Ink Warning Display

The '!' shows a low ink level in the ink tank.



The color ink becomes low.



The color ink becomes low.

## Note How to Check Ink Level

### Windows

Open the **Printer Properties** dialog box. Click the **Maintenance** tab and then **Start Status Monitor**.

See "Opening the Printer Properties Dialog Box Directly from the Start Menu" on page 29.

If the ink level becomes low, the low ink warning is displayed when printing is performed.

### Macintosh

Open the **BJ Printer Utility**, and then select **Ink Level Information** from the pop-up menu.

See "Open the BJ Printer Utility dialog box." on page 65.

### How to Display Low Ink Warning Correctly

- Reset the ink counter every time you install a new ink tank.

The ink counter cannot work correctly unless you synchronize it with the actual ink level. The ink counter can only be adjusted when it is reset at the time a new ink tank is installed.

- Do not reset the ink counter of an ink tank in use.

Synchronization of the counter and the actual ink level will not work properly.

**Important** If you did not reset the counter when you installed the current ink tanks, the low ink warning may not function correctly, until the next time you replace the ink tanks. Also, ensure that you treat both counters separately.

Refer to "**Low Ink Warning Accompanied by Ink Tank Icon With a '?'**" on page 80.



# Troubleshooting

Troubleshooting usually falls into one of the following categories. In this chapter you will find the most common printing problems. Refer to the *User's Guide* for additional information on topics not covered in this section.

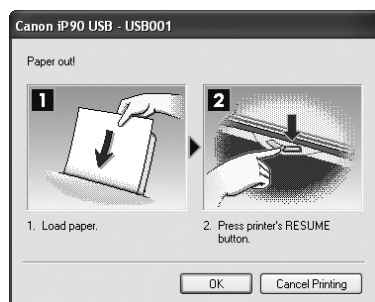
- **"Cannot Install the Printer Driver"** on page 70
- **"Print Quality is Poor or Contains Errors"** on page 72
- **"Troubleshooting Printer Hardware"** on page 74
- **"Paper Does Not Feed Properly"** on page 75
- **"Handling Error Messages"** on page 76
- **"An Error Message Appears on the Screen"** on page 78
- **"Cannot Print Properly through Infrared Communication"** on page 81
- **"Cannot Print Properly from the Digital Camera"** on page 82

## Windows

### When an Error Occurs

When an error occurs in printing such as the low ink tank or paper jams, a troubleshooting message is displayed automatically.

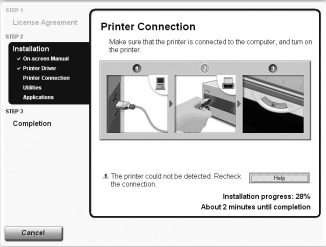
The message may vary depending on your operating system.



- \* When infrared communication is performed in Windows XP or Windows 2000, a BJ Status Monitor screen is not displayed.

# Cannot Install the Printer Driver

Problem	Possible Cause	Try This
Cannot Install the Printer Driver	Installation procedure not followed correctly	Follow the <i>Easy Setup Instructions</i> for proper printer driver installation. If the installer was forced to terminate due to an error, remove the CD-ROM from the CD-ROM drive and restart your computer. Reinstall the printer driver. If this problem persists, contact the Customer Care Center.
	Other applications running in the background	Other applications, such as anti-virus software, running in the background can interfere with the printer driver installation. Close all open software applications before reinstalling the printer driver. Refer to the <i>Easy Setup Instructions</i> for installing the printer driver.
	Installation does not start automatically when the CD-ROM is inserted into the drive	<p><b>Windows</b> If printer driver installation did not start automatically when you inserted the CD-ROM into the CD-ROM drive:</p> <ol style="list-style-type: none"> <li>1. Click <b>Start</b> and select <b>My Computer</b>.</li> <li>2. Double-click the <b>CD-ROM</b> icon.</li> </ol> <p>For non-Windows XP, open the <b>My Computer</b> window, and then double-click the <b>CD-ROM</b> icon.</p> <p><b>Macintosh</b> Double-click the <b>CD-ROM</b> icon on your desktop to start installation.</p>
	Installation CD-ROM not working properly	<p>Ensure that there are no problems with the <i>Setup Software &amp; User's Guide CD-ROM</i>.</p> <p><b>Windows</b> Use Windows Explorer to ensure that the CD-ROM can be read.</p> <p><b>Macintosh</b> Ensure that the <b>CD-ROM</b> icon is displayed on the desktop. If there is any problem with the <b>CD-ROM</b>, contact the Customer Care Center.</p>



Problem	Possible Cause	Try This
Cannot Install the Printer Driver	Unable to proceed beyond the Printer Connection Screen	<p><b>Windows</b></p>  <p>If you cannot proceed beyond the <b>Printer Connection</b> screen;</p> <ul style="list-style-type: none"> <li>• When connecting with a USB cable <ol style="list-style-type: none"> <li>1. Click <b>Cancel</b>.</li> <li>2. When the <b>Installation Failure</b> screen is displayed, click <b>Start Over</b>.</li> <li>3. <b>Easy Install</b> screen is displayed, click <b>Back</b>.</li> <li>4. Click <b>Exit</b>, then remove the CD-ROM.</li> <li>5. Turn the printer off.</li> <li>6. Restart the computer.</li> <li>7. Carefully follow the procedures described in the <i>Easy Setup Instructions</i> and reinstall the printer driver.</li> </ol> </li> <li>• When connecting through infrared communication <ol style="list-style-type: none"> <li>1. Click <b>Cancel</b>.</li> <li>2. When the <b>Installation Failure</b> screen is displayed, click <b>Start Over</b>.</li> <li>3. <b>Easy Install</b> screen is displayed, click <b>Back</b>.</li> <li>4. Click <b>Custom Install</b>.</li> <li>5. Click <b>Next</b>.</li> <li>6. Click <b>Install</b>.</li> <li>7. Click <b>Yes</b> on the <b>License Agreement</b> screen.</li> <li>8. Click <b>Manual Selection</b> on the <b>Printer Connection</b> screen.</li> <li>9. Select a port. <ul style="list-style-type: none"> <li>- Windows XP/Windows 2000: [IR]</li> <li>- Windows Me/Windows 98: [LPT3]</li> </ul> <p>A port name other than [LPT3:] may be displayed depending on the type of your computer.</p> </li> <li>10. Click <b>Next</b>.</li> </ol> </li> </ul>

# Print Quality is Poor or Contains Errors

Problem	Possible Cause	Try This
Ink does not eject properly/Printing is Blurred/ Colors are Wrong/White Streaks appear	Ink tank is not seated properly	Check that the ink tanks are firmly seated in the Print Head and reseal them if necessary. See <b>"Insert the Ink tank."</b> on page 63.
	Print Head Nozzles clogged	Print the nozzle check pattern to check for uneven ink output. See <b>"Printing the Nozzle Check Pattern"</b> on page 42. When a specific color is missing from the nozzle check pattern, clean the Print Head. If ink supply is uneven: See <b>"Print Head Cleaning"</b> on page 47.
	Incorrect paper type	<b>Windows</b> On the <b>Main</b> tab, ensure that the <b>Media Type</b> selected matches the media loaded. <b>Macintosh</b> In the <b>Print</b> dialog box, select <b>Quality &amp; Media</b> from the pop-up menu, and then ensure that the <b>Media Type</b> selected matches the media loaded.
	Glossy photo paper other than Canon speciality media is used	Selecting <b>Other Photo Paper</b> from <b>Media Type</b> , which may resolve the problem. Load one sheet at a time and remove each sheet as soon as it is printed.
	Print Quality not set properly	Be sure to set the <b>Print Quality</b> setting to <b>High</b> for Windows or <b>Fine</b> for Macintosh. <b>Windows</b> On the <b>Main</b> tab, click <b>High</b> for the <b>Print Quality</b> setting. <b>Macintosh</b> 1. In the <b>Print</b> dialog box, select <b>Quality &amp; Media</b> from the pop-up menu, and then click <b>Detailed Setting</b> . 2. Drag the <b>Print Quality</b> slide bar to the <b>Fine</b> end.
	Media not loaded with the print-side up	Check that your paper is loaded with the correct print side facing up. Consult <b>"Printing Media"</b> in the <i>User's Guide</i> for detailed instructions on how to load and handle your media.
Printed Ruled Lines are Displaced	Print Head is misaligned	Align the Print Head. See <b>"Aligning the Print Head"</b> on page 57.
	Incorrect Paper Thickness Lever (gray) position	Set the Paper Thickness Lever (gray) according to the printing paper type. See <b>"Loading Paper"</b> on page 4.
	Print Quality not set properly	Be sure to set the <b>Print Quality</b> setting to <b>High</b> for Windows or <b>Fine</b> for Macintosh. <b>Windows</b> On the <b>Main</b> tab, click <b>High</b> for the <b>Print Quality</b> setting. <b>Macintosh</b> 1. In the <b>Print</b> dialog box, select <b>Quality &amp; Media</b> from the pop-up menu, and then click <b>Detailed Setting</b> . 2. Drag the <b>Print Quality</b> slide bar to the <b>Fine</b> end.

Problem	Possible Cause	Try This
Printed Paper Curls or Ink Blots	Paper being used is too thin	Use High Resolution Paper, Photo Paper Pro or other Canon speciality paper to print images that have high color saturation.
	Incorrect paper type	<p><b>Windows</b> On the <b>Main</b> tab, ensure that the <b>Media Type</b> selected matches the media loaded.</p> <p><b>Macintosh</b> In the <b>Print</b> dialog box, select <b>Quality &amp; Media</b> from the pop-up menu, and then ensure that the <b>Media Type</b> selected matches the media loaded.</p>
	Paper Feed Roller is dirty	Clean the Paper Feed Roller. See " <b>Paper Does Not Feed Properly</b> " on page 75.
Back of Paper is Smudged	Inside of the printer is dirty	If the inside of the printer is dirty, printed paper may be smudged. Periodically clean the inside of the printer. See " <b>Cleaning the Inside of the Printer</b> " in the <i>User's Guide</i> .
	Paper Feed Roller is dirty	Clean the Paper Feed Roller. See " <b>Paper Does Not Feed Properly</b> " on page 75.
	Media is curled	If media is curled, its print side may be smudged by touching Print Head. Hold the opposite corners of the media, and gently bend them in the opposite direction to uncurl the media.
Printed Surface is Scratched	Inappropriate paper type used	<p>Check to see if the paper you are printing on is too thick or curled. See "<b>Print Media to Avoid</b>" on page 4. Note that smudging may occur at the top and bottom edges of paper when using Borderless Printing. Ensure that the paper you are using is compatible with Borderless Printing. See "<b>Media Types Suitable for Borderless Printing</b>" on page 38.</p> <p>If all four corners or the printing surface of the paper is curled, the paper may become dirty or the paper may not feed properly. Use the paper after correcting paper curl as follows.</p> <p>(1) Face up the printing surface<sup>*1</sup>, and cover it with a non-printing regular paper to avoid damaging the surface.</p> <p>(2) Roll up the paper in a direction opposite to paper curl as the figure below.</p> <div data-bbox="571 1003 1028 1171"> </div> <p>(3) Check the printing paper if paper curl is corrected within approximately 2 to 5 mm<sup>*2</sup>. It is recommended to print the curl-corrected paper one sheet at a time.</p> <div data-bbox="624 1258 1028 1362"> </div>
	Paper Thickness Lever (gray) position is not proper	<p>Set the Paper Thickness Lever (gray) in suitable position for your media. See "<b>Canon Speciality Media</b>" on page 9.</p> <p>If the paper is scratched even when printing on plain paper (right <input type="checkbox"/>) , set Paper Thickness Lever (gray) to the left ( <input checked="" type="checkbox"/> ). Return the Paper Thickness Lever (gray) to the right ( <input type="checkbox"/> ) after printing.</p>

# Troubleshooting Printer Hardware

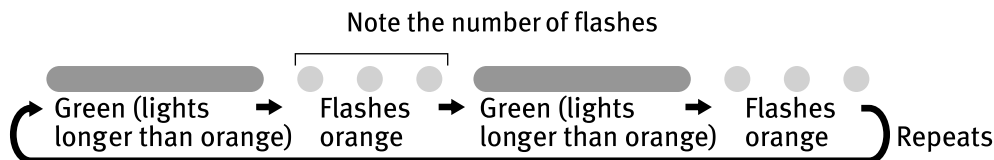
Problem	Possible Cause	Try This
Printer Does Not Start or Printer Stops During Print Jobs	Printer cable is too long	Avoid using USB cables longer than 16.4 feet.
	There may be problems in your operating system	<p>Restart your computer. It may solve the problem. Delete an undesired print job if there is any. Use BJ Status Monitor in Windows or <b>Printer Setup Utility</b> in Macintosh for the deletion. If you are using the OS other than Mac OS X v.10.3, use the <b>Print Center</b> for deletion.</p> <p><b>Windows</b></p> <ol style="list-style-type: none"> <li>1. Open the <b>Printer Properties</b> dialog box. See "<b>Opening the Printer Properties Dialog Box from Your Application Program</b>" on page 29.</li> <li>2. Click <b>Maintenance</b> tab and then <b>Start Status Monitor</b>.</li> <li>3. Click <b>Display Print Queue</b>.</li> <li>4. Select <b>Cancel All Documents</b> in the <b>Printer</b> menu. When the confirmation messages is displayed, click <b>Yes</b>. The print job is deleted.</li> </ol> <p> <b>Note</b>     <b>In Windows Me or Windows 98</b> Click to select an undesired document and select <b>Purge Print Documents</b> in the <b>Printer</b> menu.</p> <p><b>Macintosh</b></p> <ol style="list-style-type: none"> <li>1. Select <b>Applications</b> from the <b>Go</b> menu.</li> <li>2. Double-click the <b>Printer Setup Utility</b> icon in the <b>Utilities</b> folder. If you are using an OS other than Mac OS X v.10.3, double-click the <b>Print Center</b> icon.</li> <li>3. Double-click <b>IP90</b> displayed under <b>Name</b> in the <b>Printer List</b>.</li> <li>4. Click to select an undesired document and click .</li> </ol> <p>The print job is deleted.</p>
	The infrared communication distance or the Infrared Port angle is incorrect	<p>Place the printer at a distance of 31.5 inch/80 cm from the computer. Ensure that the Infrared Ports are at a proper angle and there are no obstacles between them. Retry printing.</p> <p>The allowable distance and angle for infrared communication depend on the functions of the computer in addition to environmental conditions. See "<b>Printing Data through Infrared Communication</b>" on page 15.</p>
Cannot Print to End of Job	Incorrect page size selected	<p>Ensure that the page size setting matches the size of the paper loaded in the printer:</p> <ul style="list-style-type: none"> <li>- Check the <b>Paper Size</b> setting from within your application to ensure that it matches the size of the paper loaded.</li> <li>- Check the <b>Page Setup</b> tab in the <b>Printer Properties</b> dialog box (for Windows) or the <b>Page Setup</b> dialog box (for Macintosh) to ensure that it matches the size of the paper loaded.</li> </ul>
	During infrared communication, infrared rays were interrupted or another infrared communication unit is operating nearby	<p>If infrared communication between the infrared ports of the printer and computer or PDA is interrupted by any obstacle for ten seconds or longer during printing, the paper on which data is being printed is ejected and the printer is reset. Remove the obstacle and retry printing.</p> <p>If another infrared communication unit is operating nearby, printing can stop due to interference. When printing a document through infrared communication, do not operate other infrared communication units like a television remote control. See "<b>Printing Data through Infrared Communication</b>" on page 15.</p>


# Paper Does Not Feed Properly

Problem	Possible Cause	Try This
Paper Does Not Feed Properly	Inappropriate paper type used	<ul style="list-style-type: none"> <li>Check to see if the paper you are printing on is too thick or curled. See "<b>Print Media to Avoid</b>" on page 4.</li> <li>Check if the paper exceeds the load limit mark. If it exceeds, load less paper. See "<b>Load the paper.</b>" on page 5.</li> </ul>
	Paper Feed Roller is dirty	<p>Follow the steps described below to clean the Paper Feed Rollers. If envelopes or post cards do not feed properly, even after correcting any paper curl, clean the Paper Feed Roller.</p> <ol style="list-style-type: none"> <li>1. Ensure that the printer is turned on and there is no paper loaded in the printer.</li> <li>2. Hold the <b>RESUME/CANCEL</b> button down and release after the <b>POWER</b> lamp flashes three times. The paper roller rotates as it cleans.</li> <li>3. Repeat this cleaning operation one more time.</li> <li>4. Load a sheet of plain paper in the printer.</li> <li>5. Hold the <b>RESUME/CANCEL</b> button down and release after the <b>POWER</b> lamp flashes three times, then feed a sheet of paper.</li> </ol>
	Paper Jams	<p>Remove the paper according to the following procedure.</p> <ol style="list-style-type: none"> <li>1. Slowly pull the paper out, either from the Auto Sheet Feeder or from the Paper Output Slot Cover, whichever is easier.</li> </ol> <div data-bbox="739 685 1001 902" data-label="Image"> </div> <ul style="list-style-type: none"> <li>• If the paper tears and a piece remains inside the printer, open the Print Head Cover and remove it. <b>Caution</b> Be careful not to touch any components inside the printer. After removing all paper, close the Print Head Cover.</li> <li>• If you cannot pull the paper out, turn the printer off and turn it back on. The paper will be ejected automatically.</li> </ul> <ol style="list-style-type: none"> <li>2. Reload the paper into the printer and press the <b>RESUME/CANCEL</b> button.</li> </ol> <p>If you cannot remove the paper or if the paper tears inside the printer, or if the Paper jam error (See "<b>Handling Error Messages</b>" on page 76) continues after removing the paper, contact the Customer Care Center.</p>

## Handling Error Messages

When a printer error occurs, the **POWER/ERROR** lamp flashes. The number of flashes indicates the type of error that has occurred. Count the flashes and then take appropriate action to correct the error.



Number of Flashes	Possible Cause	Try This
Two flashes	Printer is out of paper	Reload paper and press the <b>RESUME/CANCEL</b> button.
Three flashes	Paper jam	If a paper jam occurs, clear the jammed paper, reload paper in the printer, then press the <b>RESUME/CANCEL</b> button. See " <b>Paper jams</b> " on page 75.
Four flashes	Ink tanks installed incorrectly	Reinstall the ink tanks. Ensure that the tanks are firmly seated in the Print Head.
Five flashes	No Print Head installed/Defective Print Head	Install a Print Head correctly. Press the <b>POWER</b> button to turn off the printer, and press the <b>POWER</b> button again to turn on the printer. If the same error occurs, the Print Head may be defective. Contact the Customer Care Center.
Eight flashes	Waste ink absorber* almost full	The printer has a built-in waste ink absorber to hold the ink consumed during Print Head cleaning. Eight flashes indicates that this absorber is nearly full. Press the <b>RESUME/CANCEL</b> button to clear the error so printing can continue. Contact the Customer Care Center.
Nine flashes	A specified period of time has lapsed without receiving any response from a digital camera/The digital camera or digital video camcorder is not compatible with this printer	Disconnect the cable, press the <b>RESUME/CANCEL</b> button, and then connect the cable again. If the error persists, the connected digital camera or digital video camcorder may be incompatible with this printer. Use a compatible digital camera or digital video camcorder.
Twelve flashes	Low battery level	Follow the procedure below. 1. Turn off the printer. 2. Connect the supplied Universal AC Adapter or load a charged battery. 3. Turn on the printer.  <b>Note</b> For details on handling of the battery, refer to the <i>LK-51B/CK-51B User's Guide</i> .

\* The waste ink absorber absorbs ink used during cleaning.





**Note**

**POWER lamp flashes alternately green and orange**

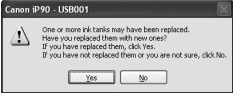
An error that requires contacting the Customer Care Center may have occurred. Disconnect the printer cable from the printer, and then turn the printer off and unplug the printer from the power supply. Reconnect the printer cable, and then plug the printer back in and turn the printer back on after leaving it for a while. If the problem remains, contact the Customer Care Center.

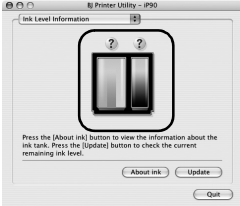
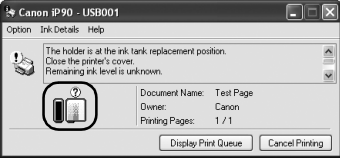
**POWER lamp (green) repeats the illumination sequence (Bluetooth Communication is used)**

When Bluetooth Communication is used and BJ Status Monitor is active with the printer power ON, the green **POWER** lamp repeats the illumination sequence in which it goes out twice every 5 seconds even if nothing is printed. This operation is not abnormal but it indicates that Bluetooth Communication is checking the printer condition. When BJ Status Monitor ends, the **POWER** lamp will stay lit.

# An Error Message Appears on the Screen

Problem	Possible Cause	Try This
<b>Windows</b> Error Writing/Output to USBnnn or MPUSBPRNnn	Printer not ready	The <b>POWER</b> lamp will flash green when the printer is warming up or when a print job is being sent to the printer. It will glow a steady (non-flashing) green when it is ready for use or when a print job is completed.
	Paper is not loaded	Load paper and press the <b>RESUME/CANCEL</b> button.
	Faulty connection	Ensure that the printer cable is securely connected to the computer.  <b>Note</b> If you are using a switching hub or other device, disconnect the printer and reconnect it directly to the computer and try printing again. If successful, the problem may have been with the device. There could also be a problem with the cable(s). Replace the cable(s) and try printing again.
	Printer Port settings and printer interface do not match	Select the destination port as follows: <ul style="list-style-type: none"> <li>When connected to the computer with a USB cable Confirm that the destination Printer Port is set to MPUSBPRNnn (<b>Canon iP90</b>) or USBnnn (<b>Canon iP90</b>) (Where nn represents a number)</li> <li>When performing infrared communication Open the Printer Properties dialog box directly from the Start menu. See "<b>Opening the Printer Properties Dialog Box Directly from the Start Menu</b>" on page 29. Ensure that the Infrared Port is selected as the destination port on the <b>Ports</b> tab or <b>Details</b> tab.                             <ul style="list-style-type: none"> <li>When using Windows XP or Windows 2000 The port [IR] is used as the infrared communication port.</li> <li>When using Windows Me or Windows 98 The Infrared Port name is followed by the text "Infrared Printing (LPT) Port" which is enclosed in parentheses. Example: LPT3: (Infrared Printing (LPT) Port) * A port other than the LPT3 port may be selected depending on the computer setting. Follow the procedures described in the <i>Easy Setup Instructions</i> and reinstall the printer driver. Refer to the <i>User's Guide</i> for instructions on how to verify status and the correct action to take.</li> </ul> </li> </ul>
	Printer driver is not installed properly	Uninstall then reinstall the printer driver. <ol style="list-style-type: none"> <li>Click <b>Start</b>, and select <b>All Programs</b> (or <b>Programs</b>), <b>Canon iP90</b>, and <b>Uninstall</b>.</li> <li>Follow the on-screen instructions to uninstall the driver.</li> <li>Follow the procedures described in the <i>Easy Setup Instructions</i> and reinstall the printer driver.</li> </ol>
	The message "Cannot write to the XXX port" is displayed	If the Infrared Port is not selected as the print port of the printer driver, the message "Cannot write to the xxx port" (xxx is the name of the printer port) is displayed and printing does not start. Select the <b>IR</b> port ( <b>LPT3</b> port in Windows Me/Windows 98) and retry printing. See " <b>Printing Data through Infrared Communication</b> " on page 15.

Problem	Possible Cause	Try This
<b>Macintosh</b> “Error No.: 300”	Printer not ready	If the <b>POWER</b> lamp is off, turn the printer on. If the <b>POWER</b> lamp is flashing green, the printer is initializing. Wait until the <b>POWER</b> lamp stops flashing.
	Printer not properly connected	Ensure that the printer is securely connected to the computer. <b>Note</b> If you are using a switching hub or other device, disconnect the printer and reconnect it directly to the computer and try printing again. If successful, the problem may have been with the device. There could also be a problem with the cable(s). Replace the cable(s) and try printing again.
	Your printer name is not displayed in the <b>Printer List</b> of <b>Printer Setup Utility</b> (or <b>Print Center</b> )	1. Select <b>Applications</b> from the <b>Go</b> menu. 2. Double-click the <b>Printer Setup Utility</b> icon in the <b>Utilities</b> folder. If you are using an OS other than Mac OS X v.10.3, double-click the <b>Print Center</b> icon. 3. Ensure that <b>IP90</b> is displayed in the <b>Printer List</b> . If <b>IP90</b> is not displayed in the <b>Printer List</b> , reinstall the printer driver. <b>Note</b> If the problem persists, delete all unnecessary documents from the <b>Extensions</b> and <b>Control Panels</b> folder.
<b>Macintosh</b> “Error No.:1700”	Waste ink absorber almost full	The printer has a built-in waste ink absorber to hold the ink used during print head cleaning. Eight flashes indicates that this absorber is nearly full. Press the <b>RESUME/CANCEL</b> button to clear the error so you can continue printing. Before the waste ink absorber becomes completely full, contact the Customer Care Center.
<b>Macintosh</b> “Error No.:2001”	A specified period of time has elapsed without receiving a response from the digital camera/The digital camera or digital video camcorder connected is not compatible with this printer	Disconnect the camera cable, press the <b>RESUME/CANCEL</b> button on the printer and reconnect the cable. If the error is still unresolved, there is a possibility that you are using a digital camera or digital video camcorder that is not supported by this printer. Use a digital camera or digital video camcorder compatible with this printer.
<b>Windows</b> Have you replaced an ink tank with a new one? message is displayed	If the ink tank has been replaced with a new one	 Click <b>Yes</b> to reset the ink counter. See “ <b>Resetting the Ink Counter</b> ” on page 64.
	If the ink tank has been removed for a certain period (the ink tank has not been replaced)	Click <b>No</b> on the dialog box described above. You can choose the option to disable the display of this confirmation message. 1. Ensure that the printer is turned on and open the <b>Printer Properties</b> dialog box. 2. Click the <b>Maintenance</b> tab and then click <b>Low Ink Warning Setting</b> . 3. Clear the check box of <b>Display a confirmation message of ink tank replacement</b> and click <b>Send</b> .

Problem	Possible Cause	Try This
Low Ink Warning Accompanied by Ink Tank Icon With a '?'	Failure to reset ink counter when installing new ink tank	<p>The ink tank level accompanied by the ink tank icon with the “?” indicates ink tank is not synchronized with its ink counter.</p> <div></div> <p>Always be sure to reset the ink counter in your printer driver when you replace an ink tank. See <b>"Resetting the Ink Counter"</b> on page 64.</p> <p><b>Note</b> A “?” is displayed next to the Ink counter between the time one ink tank is removed and the ink counter is reset when the next one is installed. When you want to suspend the ink replacing message and “?”, change a setup in accordance with the following process.</p> <p><b>Windows</b></p> <ol style="list-style-type: none"><li>1. Ensure that the printer is turned on.</li><li>2. Open the <b>Printer Properties</b> dialog box. See <b>"Opening the Printer Properties Dialog Box Directly from the Start Menu"</b> on page 29</li><li>3. Click the <b>Maintenance</b> tab and then click <b>Low Ink Warning Setting</b> icon.</li><li>4. Clear a check box of <b>Display low ink warning</b> off and click <b>Send</b>.</li><li>5. When the confirmation message is displayed, click <b>OK</b>.</li></ol> <p><b>Macintosh</b></p> <ol style="list-style-type: none"><li>1. Ensure that the printer is connected with the computer by USB cable.</li><li>2. Ensure that the printer is turned on.</li><li>3. Double-click the hard disk icon where the printer driver was installed, the <b>Applications</b> folder, and then the <b>Utilities</b> folder.</li><li>4. Double-click the <b>Printer Setup Utility</b> icon. If you are using an OS other than Mac OS X v.10.3, double-click the <b>Print Center</b> icon.</li><li>5. Select <b>IP90</b> from the <b>Name</b> list and click <b>Utility</b> or <b>Configure</b>.</li><li>6. Select <b>IP90</b> from the <b>Product</b> list and click <b>Maintenance</b>.</li><li>7. Select <b>Remaining ink level setting</b> from the pop-up menu.</li><li>8. Clear the check box of <b>Display the Remaining Ink Level</b> and click <b>Send</b>.</li><li>9. When the confirmation message is displayed, click <b>OK</b>.</li></ol>

# Cannot Print Properly through Infrared Communication

Problem	Possible Cause	Try This
<b>Windows</b> Cannot Print Properly through Infrared Communication	The required driver is not installed	When using other than Windows 98 or later must have been preinstalled and Microsoft Infrared Communication Driver must be installed in the computer. See " <b>Printing Data through Infrared Communication</b> " on page 15.
	The infrared communication driver is inactive	In Windows XP, Windows 2000, or Windows Me <ol style="list-style-type: none"> <li>1. Check whether the Wireless Link icon is displayed on the task bar.</li> <li>2. Place the mouse cursor on the Wireless Link icon. Ensure that "iP90 is the range" is displayed. If the name of another unit is displayed, change the orientation of this unit or turn it off.</li> </ol> In Windows 98 Start the infrared monitor and check whether the infrared communication driver is active. <ol style="list-style-type: none"> <li>1. Click <b>Start</b>, <b>Settings</b>, and <b>Control Panel</b>.</li> <li>2. Double-click the <b>Infrared Monitor</b>.</li> <li>3. Click the <b>Options</b> tab.</li> <li>4. Check the <b>Enable infrared communication</b> check box.</li> </ol>
	The installation place, distance, and/or angle is improper	Check the installation place, distance, or angle according to the Section "Printing Data through Infrared communication."
	The requirements for infrared communications with the computer or other devices are not satisfied	<ul style="list-style-type: none"> <li>• Printing from a computer Computer which provided with the infrared communication port based on the IrDA version 1.1 standard.</li> <li>• Printing from a PDA or mobile phone The model which provided an IrDA port and which was based on the IrMC version 1.1.</li> </ul>
	The selected printer port is wrong	Check the printer port setting. <ol style="list-style-type: none"> <li>1. Open the printer driver Properties dialog box from the <b>Start</b> menu.</li> <li>2. Click <b>Ports</b> tab or <b>Details</b> tab to ensure that the Infrared Port is selected as the destination port.</li> </ol> <ul style="list-style-type: none"> <li>• In Windows XP or Windows 2000 The port [IR] is used as the infrared communication port.</li> <li>• In Windows Me or Windows 98 The infrared port name is followed by the text "Infrared Printing (LPT) Port" which is enclosed in parentheses. Example: LPT3: (Infrared Printing (LPT) Port) * A port other than the LPT3 port may be selected depending on the computer setting.</li> </ul> To check whether the printer is connected to the computer through infrared communication, follow the procedure below. <ul style="list-style-type: none"> <li>• In Windows XP, Windows 2000, or Windows Me               <ol style="list-style-type: none"> <li>1. When the infrared port of the computer is moved close to the Infrared Port of the printer, the <b>Wireless Link</b> icon appears on the task bar.</li> <li>2. Place the cursor on the <b>Wireless Link</b> icon. If "iP90 is in range" is displayed, the printer is ready for printing. If the name of another unit is displayed, change its orientation or turn it off.</li> </ol> </li> <li>• When using Windows 98 Start the infrared monitor to check whether the Infrared Communication Driver is active.               <ol style="list-style-type: none"> <li>1. Click <b>Start</b>, then click <b>Settings</b> and <b>Control Panel</b>.</li> <li>2. Double-click the <b>Infrared</b> icon.</li> <li>3. Check whether "iP90 is in range" is displayed on the <b>Status</b> tab. If the name of another unit is displayed, change its orientation or turn it off.</li> </ol> </li> </ul>

# Cannot Print Properly from the Digital Camera

The following are the possible errors that may occur when printing directly from a digital still camera or digital video camcorder\*, and the countermeasures to eliminate them.

\* Hereafter, a digital still camera and digital video camcorder are collectively called a digital camera or camera.

Camera Error Message	Possible Cause	Try This
Printer in use	Images are being printed from the computer	Wait until printing ends. The printer automatically starts printing the images from the camera after completing the current printing.
Printer warming up	The printer is warming up	Wait until warm-up ends. When it is ready, the printer starts printing automatically.
No paper /Paper error	No paper is loaded	Load the paper in the Auto Sheet Feeder of the printer and select <b>Continue</b> * <sup>1</sup> in the display on your camera.
Paper Jam	A paper jam occurs in the printer	Select <b>Cancel</b> in the display on your camera to cancel the print job. Remove the jammed paper, load new media, and press the <b>RESUME/CANCEL</b> button.
Printer cover open	The Print Head Cover is open	Close the Print Head Cover.
No Print Head	No Print Head is installed (The <b>POWER</b> lamp on the printer flashes five times)	Install a Print Head according to the <i>Easy Setup Instructions</i> . If a Print Head has already been installed, remove it, and then reinstall it.
	The Print Head is defective (The <b>POWER</b> lamp on the printer flashes five times)	If the problem still remains, the Print Head may be defective. Contact the Customer Care Center.
Waste tank (Waste ink absorber* <sup>2</sup> ) full	The waste ink absorber* <sup>2</sup> is nearly full	The printer has a built-in waste ink absorber to hold the ink used during Print Head cleaning. This error message indicates that the waste ink absorber is nearly full. Selecting <b>Continue</b> * <sup>1</sup> in the display on your camera resumes printing. Printing can be continued for a while, but printing cannot be continued when the waste ink absorber becomes full. Contact the Customer Care Center as soon as possible.
Ink tank is empty	Replace the ink tank with a new one	Printing resumes once the Print Head Cover is closed after an ink tank replacement. You can continue printing by selecting <b>Continue</b> * <sup>1</sup> in the display on your camera with the ink tank empty. But, it is recommended you replace it with a new one immediately after printing. It may damage the printer if you continue printing with empty ink tanks.
Printer error	The battery level is low (The <b>POWER</b> lamp on the printer flashes twelve times)	Follow the procedure below. 1. Turn off the printer. 2. Connect the supplied Universal AC Adapter or load a charged battery. 3. Turn on the printer.
	An error requiring servicing might have occurred (The <b>POWER</b> lamp on the printer flashes alternately orange and green)	Select <b>Cancel</b> in the display on your camera to cancel the print job. Disconnect the cable connected to the camera, turn off the printer, and unplug the power cord of the printer from the outlet. Leave the printer for a while, plug the power cord of the printer back in the outlet, turn on the printer, and connect the camera to the printer. If the error persists, contact the Customer Care Center.

\*<sup>1</sup> To resume printing, you can press the **RESUME/CANCEL** button on the printer instead of selecting **Continue**.

\*<sup>2</sup> The waste ink absorber absorbs ink used during cleaning.



## Note

- PictBridge or Canon Bubble Jet Direct compatible digital cameras can be connected to your printer for direct printing.
- This section describes errors that are indicated on Canon-brand PictBridge- or Bubble Jet Direct-compatible cameras. The error messages and operations may vary depending on the camera you are using. For errors on non-Canon PictBridge-compatible cameras, count the number of flashes the **POWER** lamp on the printer makes and check for the cause of the error and take the appropriate action. For details, see "**Handling Error Messages**" on page 76.
- Connecting a digital camera not compatible with PictBridge or a Bubble Jet Direct makes the **POWER** lamp on your printer flash nine times. In such a case, unplug the cable connecting the camera to the printer, and press the **RESUME/CANCEL** button on the printer.
- A communication time out occurs if printing takes a long time or if it takes too much time to send data. This may stop printing. In such cases, disconnect the cable between the printer and the camera, press the **RESUME/CANCEL** button on the printer, and reconnect the cable between the printer and the camera. Then, turn the camera on, if it does not automatically turn on. If the problem is still unresolved, select some other photo and check if it can be printed or not.
- The Print Head Nozzles may be clogged if printing becomes faint or colors are incorrect. See "**When Printing Becomes Faint or Colors are Incorrect**" on page 41.
- If the paper is curled or its surface is scratched during printing, make sure that you are using the correct type of paper. If this error occurs even when you are using the correct type of paper, select **Prevent paper abrasion** on **Custom Settings** in the printer driver. See "**Print Quality is Poor or Contains Errors**" on page 72.
- To disconnect the cable connected between a digital camera and printer, follow the procedure below.
  1. Disconnect the cable from the printer.
  2. Turn off the digital camera.
  3. Disconnect the cable from the digital camera.

When disconnecting the cable, be sure to hold the connector by its sides.
- For the errors indicated on the camera and their solution, also refer to the user's manual of the camera. For other troubles with a digital camera, contact the manufacturer of the camera.

# Appendix

## Printing Photographs Directly from Canon Bubble Jet Direct Compatible Digital Cameras

Let’s take a look at the media types that can be set on the Canon Bubble Jet Direct compatible digital camera connected to this printer and their limitations.

■ Media Types for Digital Camera

When you connect a digital camera, you can use the following media:

Digital Camera Setting	Media Type
Card #1	Photo Paper Pro 4"×6"/101.6×152.4 mm
Card #2	Photo Paper Plus Glossy, Photo Paper Plus Semi-Gloss, or Glossy Photo Paper 4"×6"/101.6×152.4 mm
Card #3	Photo Paper Plus Glossy 5"×7"/127.0×177.8 mm
LTR	Photo Paper Pro, Photo Paper Plus Glossy, Photo Paper Plus Semi-Gloss, or Glossy Photo Paper Letter
A4	Photo Paper Pro, Photo Paper Plus Glossy, Photo Paper Plus Semi-Gloss, or Glossy Photo Paper A4



**Note**

- For digital camera method of operations and troubleshooting, refer to your digital camera's manual.  
For print error messages, refer to "**Cannot Print Properly from the Digital Camera**" in the *User's Guide*.
- By operating the digital camera, you can make the following prints:
  - You can make a standard print from the image displayed in the single display mode or in the index display mode.
  - You can print specified numbers of images, or make an index print by editing the DPOF.
  - For the images taken with an Exif Print-compatible digital camera, the Photo Optimizer PRO function can be used.
  - If date printing is set from a digital camera, the date when a photograph was taken is to be printed (excluding the index print).
  - Images will be scaled automatically according to the image size set on the digital camera and the size of the media set on the printer.
- The digital camera does not support the following functions:
  - Print quality setting
  - Printer maintenance
- Images other than Exif may not be index printed.

# User's Guide Table of Contents

Your printer's *User's Guide* offers detailed information on the following topics.

## How to Use This Manual

- How to Read This Manual

## Safety Precautions

## Printer Parts and Their Function

- Front View
- Operation Panel
- Rear View
- Inside the Printer

## Further Printing Techniques

- Printing Photographs
- Printer Driver Functions (Windows)
- Printer Driver Functions (Macintosh)
- BJ Printer Utility (Macintosh)

## Printing Media

- Compatible Media Types
- Photo Paper Pro PR-101
- Photo Paper Plus Glossy PP-101
- Photo Paper Plus Semi-Gloss SG-101
- Matte Photo Paper MP-101
- Glossy Photo Paper GP-401
- High Resolution Paper HR-101N
- Photo Paper Plus Double Sided PP-101D
- T-Shirt Transfers TR-301
- Transparencies CF-102
- Photo Stickers PS-101
- Envelopes

## Checking the Status of the Printer

- BJ Status Monitor Functions (Windows)
- Printer Setup Utility (or Print Center) (Macintosh)

## Routine Maintenance

- When Printing Becomes Faint or Colors are Incorrect
- Printing the Nozzle Check Pattern
- Print Head Cleaning
- Print Head Deep Cleaning
- Aligning the Print Head
- Replacing an Ink Tank

## Using the Canon iP90 Setup Utility

- Function of the Canon iP90 Setup Utility
- Starting the Canon iP90 Setup Utility
- Setup Utility Functions (Windows)
- Setup Utility Functions (Macintosh)

## Troubleshooting

- Cannot Install Printer Driver
- Print Quality is Poor
- Printer Does Not Start or Stops During Print Jobs
- Paper Does Not Feed Properly or Paper Jams
- The POWER Lamp Flashes Orange
- An Error Message is Displayed on the Screen
- Cannot Print Properly from the Digital Camera
- Cannot Print Properly through Infrared Communication (Windows)
- Problems Relating to Windows (Windows)

## Appendix

- Printing Area
- Deleting Selected Printers (Macintosh)
- Uninstalling Printer Drivers
- Uninstalling the On-screen Manual
- Cleaning the Inside of the Printer
- Transporting Printer
- Traveling Abroad with the Printer
- Specifications

## Index

## FAQS

## Accessory Options

The following options are available for this printer.  
Confirm the product names when you purchase the options.

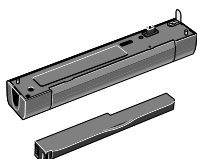
### ■ Canon Cradle Kit CK-51B

This option is a kit that consists of a stand dedicated to this printer and a portable kit LK-51B (battery charger and lithium-ion battery). The lithium-ion battery can be charged with the printer placed upright.



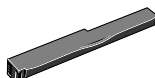
### ■ Canon Portable Kit LK-51B

This option is a battery kit that consists of a battery charger and a lithium-ion battery. Use this kit together with the printer in locations where there is no power supply (during business trip, etc.).



### ■ Canon Li-ion Battery LB-51

This option is available as an additional lithium-ion battery for the portable kit LK-51B.



### ■ **Canon Automobile Power Unit PU-100U**

This option is a unit that allows you to supply power from a cigarette lighter outlet to your printer for operation or battery charging.

### ■ **Bluetooth Unit BU-10**

This option is a unit that allows you to print wireless from a Bluetooth compatible computer.

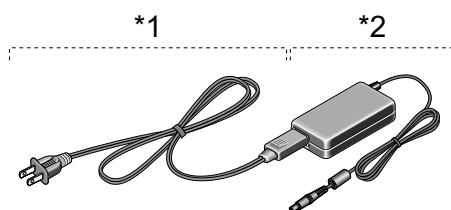
For further information on the installation or the Bluetooth settings, refer to the *Bluetooth Unit BU-10 User's Guide*.

## Traveling Abroad with the Printer

Before traveling abroad with the printer, ensure that the following notes.

### ■ About Universal AC Adapter and Power Cord

The Universal AC Adapter can be used abroad to power the printer from power supplies ranging from AC 100 V to 240 V. However, the specification of the power cord differs for each country, please purchase the power cord suitable for the specification of each country.



\*1 Power Cord

\*2 Universal AC Adapter

#### (1) Power Cord

The specification of the power cord changes with each country.

#### (2) Universal AC Adapter

Universal AC Adapter is not dependent on the specification of each country. It is common also abroad and can use.

### ■ Fill Out the CIWS Card

Fill out the CIWS Card (Canon International Warranty System) with the date of purchase and the name of where the printer was purchased. Carry this warranty card with you when you travel, so you can request repairs or servicing of the printer at your destination. For details, refer to the CIWS card.

### ■ The Cautions When Carrying Printer

- Pack up firmly in the case of carrying bag. For details, refer to Transporting Printer.
- Be careful not to give it the strong vibration which puts a serious thing on the carrying bag, and a shock. Printer itself sometimes breaks down, and ink sometimes leaks out.
- When you remove the power cord, check that the POWER lamp is off completely. If the power cord is pulled out while the POWER lamp is on or flashing, it will become the failure.



**Note** X-ray and any other baggage inspection devices have no adverse effect on this printer.

# Specifications

## Printer

Printing resolution:	4800* x 1200 dpi. max. (*Ink droplets can be placed in a pitch of 1/4800 inch at minimum.)
Print width:	203.2 mm max. (8.0 in) (for Borderless Printing: 215.9 mm/8.5 in)
Resident print control mode:	Canon extended mode
Receive buffer:	42 KB
Interface:	USB/IrDA Ver.1.1/Direct Print Port/Bluetooth Ver.1.1(option)
Acoustic noise level:	Approx. 40 dB (A) (In the highest print quality mode)
Operating environment:	Temperature: 5 to 35°C (41 to 95°F) Humidity: 10 to 90%RH (no condensation)
Storage environment:	Temperature: 0 to 40°C (32 to 104°F) Humidity: 5 to 95% RH (no condensation)
Power supply:	AC 100-240 V, 50/60 Hz
Power consumption:	Standby: 1 W or lower Printing: Approx. 10 W OFF: Approx. 0.2 W
Dimensions (with Paper Support and Paper Output Tray retracted):	310 (W) x 174 (D) x 51.8 (H) mm 12.20 (W) x 6.85 (D) x 2.04 (H) in
Weight:	Approx. 1.8 kg (4 lb.)
Print Head:	Black: 160 x 2 nozzles (600 dpi) Cyan, Magenta, Yellow: 128 x 2 x 3 nozzles per each color (600 dpi)

### Universal AC Adapter

Dimensions:	4.65 (W) x 2.28 (D) x 1.02 (H) in
Weight:	Approx. 200 g (0.44 lb)
Rated input:	AC 100 to 240 V
Rated output:	DC 16 V, 1.8 A

### Camera Direct Print

- Canon Bubble Jet Direct

#### Compatible Paper

Card #1 (Photo Paper Pro 4"×6" / 101.6×152.4 mm), Card #2 (Photo Paper Plus Glossy, Photo Paper Plus Semi-Gloss, or Glossy Photo Paper 4"×6" / 101.6×152.4 mm), Card #3 (Photo Paper Plus Glossy 5"×7" / 127.0×177.8 mm), LTR (Photo Paper Pro, Photo Paper Plus Glossy, Photo Paper Plus Semi-Gloss, or Glossy Photo Paper Letter size), A4 (Photo Paper Pro, Photo Paper Plus Glossy, Photo Paper Plus Semi-Gloss, or Glossy Photo Paper A4 size)

#### Layout Print

Standard: Borderless/with border, Index Print: 6-80 images (Depending on the size of print media)

#### Print Quality

Standard

#### Effect

Exif Print compatible

#### DPOF Version

Ver. 1.00 compatible (Index print, number of copies, select images, print special characters (date))

- PictBridge

#### Paper size

Default (Photo Paper Plus Glossy 10 x 15 cm/4"×6"), 10 x 15 cm/4"×6" (Photo Paper Plus Glossy, Photo Paper Pro, Photo Paper Plus Semi-Gloss, Glossy Photo Paper, or Photo Stickers), 13 x 18 cm/5" x 7" (Photo Paper Plus Glossy)\*, A4/8.5"×11" (Photo Paper Plus Glossy A4/Letter, Photo Paper Pro A4/Letter, Photo Paper Plus Semi-Gloss A4/Letter, Glossy Photo Paper A4/Letter, Plain Paper A4/Letter), Credit Card (Glossy Photo Paper)

\*If using a Canon PictBridge-compatible camera, you can select it.

#### Paper Type

Default (Photo Paper Plus Glossy), Photo (Photo Paper Plus Glossy), Fast Photo (Photo Paper Pro), Plain Paper

#### Layout

Default (Borderless), Borderless, Bordered, 2-up/4-up/9-up/16-up\*

\*When 4"×6" is selected from "Paper Size", these options may be available in "Layout". For details on "Layout", see the *Quick Start Guide*.

#### Trimming

Off (No trimming)

#### Image optimize

Default (Exif Print), "VIVID"\*, "NR" (Noise Reduction)\*, "VIVID+NR"

\*If using a Canon PictBridge-compatible camera, you can select it.

#### Date print

Default (Off: No printing)



## BJ Printer Driver System Requirements

### Windows

- Use a computer equipped on which Windows XP, Windows 2000, Windows Me, or Windows 98 can operate.
- USB Interface or IrDA Ver.1.1
- CD-ROM drive
- Available hard-disk space for printer driver installation (including temporary files)  
Windows XP/Windows 2000: 150MB  
Windows Me/Windows 98: 65MB

USB operation can only be guaranteed on a PC with pre-installed Windows XP, Windows 2000, Windows Me, or Windows 98.

### Macintosh

- Use a Macintosh series computer equipped with USB interface on which Mac OS X v.10.2.1 or later can operate.
- USB interface
- CD-ROM drive
- Available hard-disk space for printer driver installation  
Mac OS X v.10.2.1 or later: 340 MB
- The following functions are not supported:
  - Duplex Printing
  - Poster Printing
  - Fit to Page Printing
  - Booklet Printing
  - Reverse Order Printing (except for Mac OS X v.10.3.x)
  - Photo Optimizer PRO

## Additional System Requirements for Electric Manual

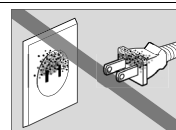
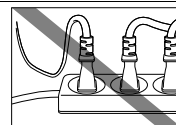
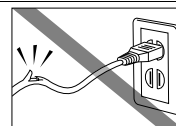
- 15 MB free hard disk space
- Windows: Microsoft® Internet Explorer 5.0 or later.
- Macintosh: Microsoft® Internet Explorer 5.0 or later, Safari 1.0 or later.

## ⚠ Safety Precautions

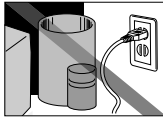
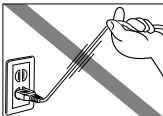

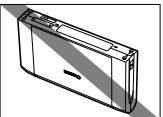
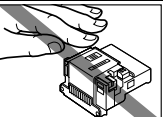
Please read the safety warnings and cautions provided in this manual to ensure that you use your printer safely. Do not attempt to use printer in any way not described in this manual.

**Warning** You may cause an electric shock/fire or damage the printer if you ignore any of these safety precautions.

Choosing a location	Do not place the printer close to flammable solvents such as alcohol or thinners.
Power supply	Never attempt to plug in or unplug the printer from the power supply when your hands are wet.
	Always push the plug all the way into the power outlet.
	Never damage, modify, stretch or excessively bend or twist the power cord. Do not place heavy objects on the power cord or universal AC adapter.
	Never plug the printer into a power socket that is shared with other equipment (extension lead/cord, 2- or 3- way adapter, etc.).
	Never use the printer if the power cord is bundled or knotted.
	If you detect smoke, unusual smells or strange noises around the printer, immediately unplug the printer at the power supply and call for service.
Cleaning the printer	Periodically, unplug the printer and use a dry cloth to wipe off any dust or dirt collected on the plug and the power outlet. If the printer is placed at a location exposed to a lot of dust, smoke, or high humidity, the dust collected on the plug absorbs moisture and may cause insulation failure and fire.
	Use the universal AC adapter that came with the printer (CANON, K30244). Do not use it for other products.
	Use a damp cloth to clean the printer. Never use flammable solvents such as alcohol, benzene or thinners. If flammable solvents come in contact with electrical components inside the printer, it could cause a fire or electric shock.
Maintaining the printer	Always unplug the printer from the power outlet before cleaning the printer. If you accidentally switch the printer on while cleaning it, you could injure yourself or damage the printer.
	Do not attempt to disassemble or modify the printer. There are no user serviceable parts inside the printer. The printer contains high-voltage components. Never attempt any maintenance procedure not described in this guide.
Working around the printer	Do not use flammable sprays near the printer. This could cause a fire or electric shock if the spray comes into contact with electrical components inside the printer.



**Caution** You may cause injury or damage the printer if you ignore any of these safety precautions.

<b>Choosing a location</b>	<b>Do not install the printer in a location that is unstable or subject to excessive vibration.</b>	
	<b>Do not install the printer in locations that are very humid or dusty, in direct sunlight, outdoors, or close to a heating source.</b> To avoid the risk of fire or electric shocks, install the printer in a location with an ambient temperature range of 5°C to 35°C (41°F to 95°F) and humidity of 10% to 90% (condensation free).	
	<b>Do not place the printer on a thick rug or carpet.</b>	
<b>Power supply</b>	<b>Ensure that the area around the power outlet is kept clear at all times so you can easily unplug the power cord if necessary.</b>	
	<b>Never remove the plug by pulling on the cord.</b>	
	<b>Do not use an extension lead/ cord.</b>	
<b>Working around the printer</b>	<b>Never put your hands or fingers in the printer while it is printing.</b>	
	<b>Do not place any object on the printer.</b>	
	<b>Do not carry or store the printer with the round side down. A failure can result.</b>	
	<b>Do not place metal objects (paper clips, staples, etc.) or containers of flammable solvents (alcohol, thinners, etc.) on top of the printer.</b>	
	<b>If any foreign object (metal or liquid) fall into the printer, unplug the power cord and call for service.</b>	
<b>Print Heads and ink tanks</b>	<b>For safety reasons store Print Heads and ink tanks out of the reach of small children.</b> If a child ingests any ink, consult a doctor immediately.	
	<b>Do not shake print heads or ink tanks.</b> Ink may leak out and stain clothing or the surrounding area.	
	<b>Never touch the electrical contacts on a Print Head after printing.</b> The metal parts may be very hot and could cause burns.	
<b>Universal AC Adapter</b>	When you pack the universal AC adapter for travel or storage, never wrap the cord around the body of AC adapter to prevent the cord from splitting or separating from the body of the AC adapter and causing a short circuit.	

# Regulatory Information

## Color Printer Model: K10249

This device complies with Part 15 of the FCC Rules. Operation is subject to the following two conditions: (1) This device may not cause harmful interference, and (2) this device must accept any interference received, including interference that may cause undesired operation.

Note: This equipment has been tested and found to comply with the limits for a Class B digital device, pursuant to Part 15 of the FCC Rules. These limits are designed to provide reasonable protection against harmful interference in a residential installation. This equipment generates, uses and can radiate radio frequency energy and, if not installed and used in accordance with the instructions, may cause harmful interference to radio communications. However, there is no guarantee that interference will not occur in a particular installation. If this equipment does cause harmful interference to radio or television reception, which can be determined by turning the equipment off and on, the user is encouraged to try to correct the interference by one or more of the following measures:

- Reorient or relocate the receiving antenna.
- Increase the separation between the equipment and receiver.
- Connect the equipment into an outlet on a circuit different from that to which the receiver is connected.
- Consult the dealer or an experienced radio/TV technician for help.

Use of a shielded cable is required to comply with Class B limits in Subpart B of Part 15 of the FCC Rules.

Do not make any changes or modifications to the equipment unless otherwise specified in the manual. If such changes or modifications should be made, you could be required to stop operation of the equipment.

Canon U.S.A., Inc.  
One Canon Plaza  
Lake Success, NY 11042  
1-516-328-5600

## Canadian Radio Interference Regulations

This digital apparatus does not exceed Class B limits for radio noise emissions from a digital apparatus as set out in the interference-causing equipment standard entitled “Digital Apparatus”, ICES-003 of the Industry Canada.

Cet appareil numérique respecte les limites de bruits radio électriques applicables aux appareils numériques de Classe B prescrites dans la norme sur le matériel brouilleur: “Appareils Numériques”, NMB-003 édictée par l’Industrie Canada.

## CANON U.S.A., INC. LIMITED WARRANTY --- (USA Only)

The limited warranty set forth below is given by Canon U.S.A., Inc. ("Canon USA") with respect to the new or refurbished Canon-brand product ("Product") packaged with this limited warranty, when purchased and used in the United States only.

The Product is warranted against defects in materials and workmanship under normal use and service (a) for a period of one (1) year from the date of original purchase when delivered to you in new condition in its original container or (b) for 90 days from the date of original purchase for refurbished Products. Defective parts or a defective Product returned to a Canon USA repair facility or a Canon USA Authorized Service Facility ("ASF"), and proven to be defective upon inspection, will be repaired, exchanged for new or comparable rebuilt parts, or exchanged for a refurbished Product, as determined by the Canon USA repair Facility or the ASF. Warranty repair or replacement shall not extend the original warranty period of the Product. A dated proof of purchase is required at the time of warranty service. A copy of your dated bill of sale will satisfy this requirement. This warranty does not cover any accessories, or any consumables, such as paper or ink cartridges, as to which there shall be no warranty or replacement.

This limited warranty shall only apply if the Product is used in conjunction with compatible computers, peripheral equipment and software. Canon USA shall have no responsibility for such items except for compatible Canon brand peripheral equipment covered by a separate warranty ("Separate Warranty"). Repairs of such Canon brand peripheral equipment shall be governed by the terms of the Separate Warranty. Non-Canon brand equipment and software that may be distributed with the Product are sold "as is" and without warranty of any kind by Canon USA, including any implied warranty regarding merchantability or fitness for a particular purpose, and all such warranties are disclaimed. The sole warranty, if any, with respect to such non-Canon brand items is given by the manufacturer or producer thereof.

This limited warranty covers all defects encountered in normal use of the Product and does not apply in the following cases:

- (a) Loss of or damage to the Product due to abuse, neglect, mishandling, improper packaging by you, alteration, accident, electrical current fluctuations, improper use, failure to follow operating or maintenance instructions in, or environmental conditions prescribed in, Canon USA's user's manual or other documentation, or services performed by someone other than a Canon USA repair facility or ASF. Without limiting the foregoing, dropping the Product, scratches, and abrasions will be presumed to have resulted from misuse, abuse or failure to operate the Product as set forth in the user's manual or other documentation for the Product.
- (b) Use of parts or supplies (other than those sold by Canon USA) that cause damage to the Product or cause abnormally frequent service calls or service problems.
- (c) If the Product has had its serial number or dating defaced, altered or removed.

ANY SYSTEM SOFTWARE (WHETHER FACTORY LOADED ON THE PRODUCT OR CONTAINED ON THE SOFTWARE DISKETTES OR CD-ROM'S ENCLOSED WITH, OR ACCOMPANYING, THE PRODUCT), AND ANY UTILITY SOFTWARE, DISTRIBUTED WITH OR FOR THE PRODUCT, IS SOLD "AS IS" AND WITHOUT WARRANTY BY CANON USA. THE SOLE WARRANTY WITH RESPECT TO SUCH SOFTWARE IS CONTAINED IN THE SOFTWARE MANUFACTURER'S LICENSE AGREEMENT DISTRIBUTED THEREWITH, INCLUDING ANY LIMITATIONS AND DISCLAIMERS THEREON. PLEASE CONTACT CANON USA IMMEDIATELY IF YOU HAVE NOT RECEIVED A COPY OF THE SOFTWARE MANUFACTURER'S LICENSE AGREEMENT.

NO IMPLIED WARRANTY, INCLUDING ANY IMPLIED WARRANTY OF MERCHANTABILITY OR FITNESS FOR A PARTICULAR PURPOSE, APPLIES TO THE PRODUCT AFTER THE APPLICABLE PERIOD OF THE EXPRESS LIMITED WARRANTY STATED ABOVE, AND NO OTHER EXPRESS WARRANTY OR GUARANTY, EXCEPT AS MENTIONED ABOVE, GIVEN BY ANY PERSON OR ENTITY WITH RESPECT TO THE PRODUCT SHALL BIND CANON USA, OR ITS ASF. (SOME STATES DO NOT ALLOW LIMITATIONS ON HOW LONG AN IMPLIED WARRANTY LASTS, SO THE ABOVE LIMITATION MAY NOT APPLY TO YOU.) CANON USA SHALL NOT BE LIABLE FOR LOSS OF REVENUES OR PROFITS, INCONVENIENCE, EXPENSE FOR SUBSTITUTE EQUIPMENT OR SERVICE, STORAGE CHARGES, LOSS OR CORRUPTION OF DATA, OR ANY OTHER SPECIAL, INCIDENTAL OR CONSEQUENTIAL DAMAGES CAUSED BY THE USE, MISUSE, OR INABILITY TO USE THE PRODUCT REGARDLESS OF THE LEGAL THEORY ON WHICH THE CLAIM IS BASED, AND EVEN IF CANON USA OR ITS ASF HAS BEEN ADVISED OF THE POSSIBILITY OF SUCH DAMAGES. NOR SHALL RECOVERY OF ANY KIND AGAINST CANON USA OR ITS ASF BE GREATER IN AMOUNT THAN THE PURCHASE PRICE OF THE PRODUCT CAUSING THE ALLEGED DAMAGE. WITHOUT LIMITING THE FOREGOING, YOU ASSUME ALL RISK AND LIABILITY FOR LOSS, DAMAGE OR INJURY TO YOU AND YOUR PROPERTY AND TO OTHERS AND THEIR PROPERTY ARISING OUT OF THE POSSESSION, USE, MISUSE, OR INABILITY TO USE THE PRODUCT SOLD BY CANON USA NOT CAUSED SOLELY AND DIRECTLY BY THE NEGLIGENCE OF CANON USA, OR ITS ASF. (SOME STATES DO NOT ALLOW THE EXCLUSION OR LIMITATION OF INCIDENTAL OR CONSEQUENTIAL DAMAGES, SO THE ABOVE EXCLUSION OR LIMITATION MAY NOT APPLY TO YOU.) THIS LIMITED WARRANTY SHALL NOT EXTEND TO ANYONE OTHER THAN THE ORIGINAL PURCHASER OF THE PRODUCT OR THE PERSON FOR WHOM IT WAS PURCHASED AS A GIFT, AND STATES YOUR EXCLUSIVE REMEDY.

Canon USA offers a full range of customer technical support\* options:

- Interactive troubleshooting, e-mail technical support, the latest driver downloads and answers to frequently asked questions ([www.canontechsupport.com](http://www.canontechsupport.com))

## Appendix

---

- Toll-free live technical support within the limited warranty Monday-Saturday (excluding holidays) at 1-800-828-4040
- The location of the ASF nearest you for carry-in service (1-800-423-2366)
- Telephone Device for the Deaf (**TDD 1-866-251-3752**)

If the problem cannot be corrected by using one of the above technical support options, repair options (i.e. Carry-In/Mail-In Service\*, InstantExchange Warranty Service\*), along with details and conditions of each, are available at the time of your call to the live technical support number(s) above or via the website at [www.canontechsupport.com](http://www.canontechsupport.com). Please note that under the InstantExchange program, a replacement product will be provided to you prior to your return of the defective product. Since the defective product becomes the property of Canon USA at the time of the exchange, the defective product must be returned in the shipping materials provided. If the defective product is not returned, as directed, you will be responsible for the value of the replacement product, for which Canon USA may invoice you.

This limited warranty gives you specific legal rights, and you may also have other rights, which vary from state to state.

\* Support program specifics are subject to change without notice.

Canon U.S.A., Inc.  
One Canon Plaza  
Lake Success, NY 11042  
USA

Canon is a registered trademark of Canon Inc.

# Index

## A

Accessory Options .....	87
Adjusting Print Quality .....	30
Advanced Printing .....	23
Aligning the Print Head .....	57
An Error Message Appears on the Screen .....	78
Automobile Power Unit PU-100U .....	88

## B

BCI-15 Black .....	61
BCI-16 Color .....	61
BJ Printer Driver System Requirements .....	93
BJ Printer Utility dialog box .....	43
BJ Status Monitor .....	69, 74
Bluetooth Unit BU-10 .....	88
Borderless (full) .....	40
Borderless Print .....	37
Borderless Printing .....	38, 73
Bubble Jet Direct .....	84, 92

## C

Camera Error Message .....	82
Canceling Print Jobs .....	12
Cannot Install the Printer Driver .....	70
Cannot Print Properly from the Digital Camera .....	82
Cannot Print Properly through Infrared Communication .....	81
Canon Bubble Jet Direct compatible digital camera .....	23
CANON U.S.A., INC. LIMITED WARRANTY --- (USA Only) .....	97
Cleaning .....	48, 50
Cradle Kit CK-51B .....	87

## D

Deep Cleaning .....	53, 55
Document Print Settings .....	19
Document Printing dialog box .....	19
Driver	
saving settings .....	35
settings .....	11, 13
uninstalling .....	78

## E

Easy-PhotoPrint .....	37, 38
Easy-WebPrint .....	37
Examining the Nozzle Check Pattern .....	45
Exif Print .....	37

## G

Glossy Photo Paper .....	9
--------------------------	---

## H

Handling Error Messages .....	76
Help .....	2
High Resolution Paper .....	9

## I

Infrared Communication .....	15
Infrared icon .....	15
Infrared Port of printer .....	22
Ink Counter Reset .....	65
Ink tank .....	61
iP90 Setup Utility .....	17

## L

Li-ion Battery LB-51 .....	87
Load Limit Mark .....	5
Loading Paper .....	4
Low Ink Warning .....	67
Low Ink Warning Setting .....	80

## M

Matte Photo Paper .....	9
Media Name .....	9
Media Type .....	9, 11, 13
Media Types for Digital Camera .....	27, 84
Media Types Suitable for Borderless Printing .....	38
Message Prompting Confirmation of Ink Tank Replacement .....	64
Mobile Phone .....	16

## N

Nozzle Check .....	42, 44
Nozzle Check Pattern	
examining .....	45
printing .....	42

## O

Opening the Printer Properties Dialog Box Directly from the Start Menu .....	29
Opening the Printer Properties Dialog Box from Your Application Program .....	29

## P

Page Setup .....	12, 74
Page Setup dialog box .....	12, 74
Paper Feed Rollers .....	75
Paper Size .....	12
Paper Support Load Limit .....	9

## Index

---

Paper Thickness Lever Position .....	9
PDA .....	16
Performing Infrared Communication .....	21
Photo Noise Reduction .....	34
Photo Optimizer PRO .....	32
Photo Paper Plus Double Sided .....	9
Photo Paper Plus Glossy .....	9
Photo Paper Plus Semi-Gloss .....	9
Photo Paper Pro .....	9
Photo Print Settings .....	17
Photo Printing dialog box .....	17
Photo Stickers .....	9
PhotoRecord .....	37
PictBridge .....	25, 92
Portable Kit LK-51B .....	87
POWER button .....	2
Power Cord .....	89
POWER lamp .....	2
POWER/ERROR lamp .....	76
Preview before printing .....	11
Print Center .....	43
Print Check Pattern .....	43, 44
Print dialog box .....	10, 13
Print Head Alignment .....	57, 59
Print Head Cleaning .....	47
Print Head Deep Cleaning .....	52
Print Media to Avoid .....	4
Print Mode .....	13
Print Quality .....	11, 30, 72
Printer Driver Settings for Media Type .....	9
Printer Properties dialog box .....	10, 29, 42
Printer Setup Utility .....	43
Printing Borderless Photographs .....	38
Printing Photographs Directly from a Digital Camera ...	23
Printing Photographs Directly from Canon Bubble Jet Direct Compatible Digital Cameras .....	84
Printing the Nozzle Check Pattern .....	42

## R

Recalling Driver Settings .....	35
Replacing an Ink Tank .....	61
Requirements for Infrared Communication with the Computer .....	15
Requirements for Infrared Communication with the PDA ..	16
Resetting the Ink Counter .....	64
Resetting the Ink Counter in Printer Properties dialog box	65
RESUME/CANCEL button .....	12

## S

Safety Precautions .....	94
Saving Driver Settings .....	35

Speciality Media .....	9
Specifications .....	91
Specify the paper size and layout .....	17
Super White Paper .....	9

## T

Transparencies .....	9
Troubleshooting .....	69
T-Shirt Transfers .....	9
Turning off the Printer .....	3
Turning on the Printer .....	2

## U

Uninstalling the printer driver .....	78
Universal AC Adapter .....	89
User's Guide Table of Contents .....	86
Using Speciality Media .....	8

## V

Vivid Photo .....	33
-------------------	----

## W

When Printing Becomes Faint or Colors are Incorrect ....	41
Wireless Link icon .....	15







# Ordering Information

For additional supplies, use the following descriptions and order numbers.

Description	Order #
<b>Ink Tanks</b>	
BCI-15 Black	8190A003
BCI-16 Color	9818A003
<b>Canon Specialty Papers</b>	
Photo Paper Plus Glossy (4" x 6" / 20 sheets)	7980A007
Photo Paper Plus Glossy (4" x 6" / 50 sheets)	7980A012
Photo Paper Plus Glossy (4" x 6" / 120 sheets)	7980A022
Photo Paper Plus Glossy (5" x 7" / 20 sheets)	7980A019
Photo Paper Plus Glossy (8.5" x 11" / 20 sheets)	7980A006
Photo Paper Plus Double Sided (5" x 7" / 10 sheets)	9981A006
Photo Paper Plus Double Sided (8.5" x 11" / 10 sheets)	9981A005
Photo Paper Plus Double Sided Album Kit (5" x 7")	0041B005
Photo Paper Plus Double Sided Album Kit (8.5" x 11")	0041B006
Photo Paper Plus Semi-Gloss (4" x 6" / 50 sheets)	8386A010
Photo Paper Pro for Borderless Printing (4" x 6" / 20 sheets)	1029A014
Photo Paper Pro for Borderless Printing (4" x 6" / 75 sheets)	1029A027
Photo Paper Pro (8.5" x 11" / 15 sheets)	1029A004
Photo Paper Pro (8.5" x 11" / 30 sheets)	1029A028
Matte Photo Paper (8.5" x 11" / 50 sheets)	7981A004
Glossy Photo Paper (4" x 6" / 50 sheets)	9157A010
Glossy Photo Paper (8.5" x 11" / 20 sheets)	1026A009
Glossy Photo Paper Credit Card Size	9157A023
Photo Stickers	0001C001
Transparencies (8.5" x 11" / 50 sheets)	1043A004
High Resolution Paper (8.5" x 11" / 100 sheets)	1043A011

Call **1-800-OK-CANON** to locate a dealer near you, or visit the Canon eStore at **[www.estore.usa.canon.com](http://www.estore.usa.canon.com)**.



©2005 Canon U.S.A., Inc. Canon is a registered trademark of Canon Inc. All other product and brand names are trademarks of their respective owners. As an ENERGY STAR<sup>®</sup> partner, Canon U.S.A., Inc., has determined that this product meets the ENERGY STAR<sup>®</sup> guidelines for energy efficiency.

# Quick Start Guide

## **Canon U.S.A., Inc.**

One Canon Plaza, Lake Success, NY 11042, U.S.A.

## **Canon Inc.**

30-2, Shimomaruko 3-Chome, Ohta-ku, Tokyo 146-8501, Japan

## **Canon Canada, Inc.**

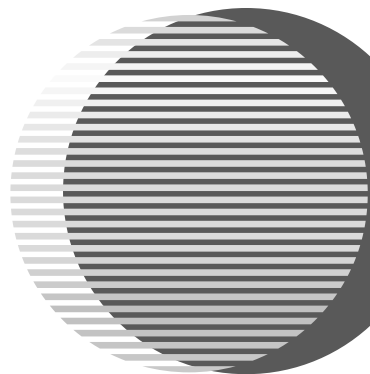
6390 Dixie Road, Mississauga, Ontario, L5T 1P7, Canada

## **Canon Latin America, Inc.**

703 Waterford Way, Suite 400, Miami, FL 33126, U.S.A.

## **Canon Mexicana**

Boulevard Manuel Avila Camacho No. 138 PB  
y Pisos 15, 16 y 17, Colonia Lomas de Chapultepec  
Delegación Miguel Hidalgo, CP 11000, Mexico D.F.



The following ink tanks are compatible with iP90.



BCI-15 Black



BCI-16 Color

For details on ink tank replacement, refer to “Replacing an Ink Tank” in this guide.