



imageCLASS

D 8 0 0 Series

Printer Guide

IMPORTANT:

Read this manual carefully.

Use this manual when you need quick reference help for the printer feature of your machine.

Using Your Documentation

Your machine includes the following documentation. This documentation has been designed so that you can easily use your machine to suit your particular needs.

Setting up the machine

Setting up paper

Installing Printer Driver.....



Set-up Instructions

Document and paper handling

Making copies.....

Maintenance

Troubleshooting feed and copy issues



Basic Guide

Sending and receiving faxes

Speed dialing.....

Troubleshooting fax issues.....



Fax Guide

**Printing with CAPT (Canon Advanced
Printing Technology).....**

Checking the Status of a Print Job

Troubleshooting CAPT issues



Printer Guide

How This Manual Is Organized

Chapter 1

Before You Start

Chapter 2

Installing the Printer Driver (Canon Advanced Printing Technology (CAPT))

Chapter 3

Printer Properties

Chapter 4

Checking the Status of a Print Job

Chapter 5

Troubleshooting

Appendix

Printer Specifications

Glossary

Index

•Considerable effort has been made to ensure that this manual is free of inaccuracies and omissions. However, as we are constantly improving our products, if you need an exact specification, please contact Canon.

Legal Notices

Trademarks

Canon, the Canon Logo, and imageCLASS are trademarks of Canon Inc.

Microsoft[®], Windows[®], and Windows NT[®] are registered trademarks or trademarks of Microsoft Corporation in the United States and other countries.

Other brand and product names are trademarks or registered trademarks of their respective companies.

In this manual, Microsoft[®], Microsoft[®] Windows[®], and Microsoft[®] Windows NT[®] are referred to as Microsoft, Windows, and Windows NT respectively.

Copyright

Copyright ©2004 Canon Inc. All rights reserved.

No part of this publication may be reproduced, transmitted, transcribed, stored in a retrieval system, or translated into any language or computer language, in any form or by any means, electronic, mechanical, magnetic, optical, chemical, manual, or otherwise, without the prior written permission of Canon Inc.

Notice

The information in this document is subject to change without notice.

Disclaimer

CANON INC. MAKES NO WARRANTY OF ANY KIND WITH REGARD TO THIS MATERIAL, EITHER EXPRESS OR IMPLIED, EXCEPT AS PROVIDED HEREIN, INCLUDING WITHOUT LIMITATION, THEREOF, WARRANTIES AS TO MARKETABILITY, MERCHANTABILITY, FITNESS FOR A PARTICULAR PURPOSE OF USE OR AGAINST INFRINGEMENT OF ANY PATENT. CANON INC. SHALL NOT BE LIABLE FOR ANY DIRECT, INCIDENTAL, OR CONSEQUENTIAL DAMAGES OF ANY NATURE, OR LOSSES OR EXPENSES RESULTING FROM THE USE OF THIS MATERIAL.

Contents

Chapter 1: Before You Start

| | |
|---------------------------|-----|
| Introduction | 1-2 |
| System Requirements | 1-2 |
| Where to Find Help | 1-3 |

Chapter 2: Installing the Printer Driver (Canon Advanced Printing Technology (CAPT))

| | |
|------------------------------------------|------|
| What is CAPT | 2-2 |
| Installing the Printer Driver | 2-2 |
| Windows 95/98/Me | 2-3 |
| USB Users | 2-3 |
| Parallel Port Users | 2-8 |
| Windows NT 4.0/2000/XP/Server 2003 | 2-13 |
| USB Users | 2-13 |
| Parallel Port Users | 2-15 |
| Network Users | 2-28 |
| Connecting to the imageCLASS D800 Series | |
| Already on Your Network | 2-28 |
| Printer Sharing | 2-31 |
| Connecting the imageCLASS D800 Series | |
| as a Network Printer | 2-32 |
| Canon iC D800 Group | 2-42 |
| Printing with CAPT | 2-43 |

Chapter 3: Printer Properties

| | |
|-----------------------------------------------------------|------|
| Windows 95/98/Me Printer Properties | 3-2 |
| Windows NT 4.0/2000/XP/Server 2003 Printer Properties and | |
| Default Document Properties | 3-16 |

Chapter 4: Checking the Status of a Print Job

| | |
|-----------------------------------------|------|
| Opening the Status Window | 4-2 |
| Using Canon iC D800 Status Window | 4-3 |
| Network Printer Status | 4-12 |
| The Status Window Icon | 4-13 |
| Closing the Status Window | 4-13 |
| Messages | 4-13 |

Chapter 5: Troubleshooting

| | |
|---------------------------------|------|
| Finding Information | 5-1 |
| Printer Problems | 5-2 |
| CAPT Problems | 5-4 |
| CAPT Messages | 5-6 |
| Using the Trouble Shooter | 5-8 |
| Uninstalling CAPT | 5-10 |

Appendix A: Printer Specifications A-1

Glossary G-1

Index I-1

How to Use This Manual

■ Symbols Used in This Manual

Please read the list below of symbols, terms, and abbreviations used in this guide.



- Indicates a warning concerning operations that may lead to death or injury to persons if not performed correctly. In order to use the machine safely, always pay attention to these warnings.



- Indicates a caution concerning operations that may lead to injury to persons or damage to property if not performed correctly. In order to use the machine safely, always pay attention to these cautions.



- Indicates an operational warning or restriction. Be certain to read these items to operate the machine correctly, and to avoid damage to the machine.




- Indicates a note for operation or an additional explanation. Reading these is highly recommended.

| | |
|------------------------------|------------------------------------------------------------------------------------------------------------------------------------------------------------------------|
| (→ p. n-nn) | A number preceded by an arrow and enclosed in parenthesis refers to a page number in this guide which contains more information on the topic of the previous sentence. |
| → <i>Set-up Instructions</i> | Refer to the <i>Set-up Instructions</i> for details on the topic of the previous sentence. |
| → <i>Basic Guide</i> | Refer to the <i>Basic Guide</i> for details on the topic of the previous sentence. |
| machine | The word “machine” refers to imageCLASS D800 series. |
| default | A setting that remains in effect unless you change it. |

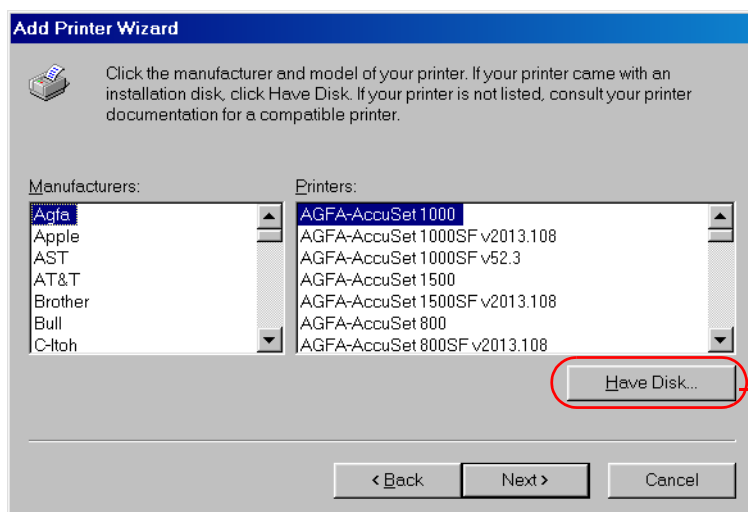
Your new machine has many advanced features, including CAPT (Canon Advanced Printing Technology). CAPT gives you instant access to printer information. In this documentation CAPT is also referred to as the **Canon iC D800**, as it appears on your screen after it has been installed.

■ Displays Used in This Manual

Screenshots of computer operation screens used in this manual may differ from the ones you actually see, depending on the model or options that come with your machine.

The keys or buttons which you should press are marked with , as shown below. When multiple buttons or keys can be pressed, they will be highlighted and mentioned in the order in which they should be pressed.

4 The Wizard displays a list of available printers. Click **Have Disk...**



Click this button
for operation

■ Abbreviations Used in This Manual

In this manual, product names and model names are abbreviated as follows:

| | |
|----------------------------------------------------------|---------------------|
| Microsoft® Windows® 95 operating system: | Windows 95 |
| Microsoft® Windows® 98 operating system: | Windows 98 |
| Microsoft® Windows® Millennium Edition operating system: | Windows Me |
| Microsoft® WindowsNT®4.0 operating system: | Windows NT 4.0 |
| Microsoft® Windows® 2000 operating system: | Windows 2000 |
| Microsoft® Windows® XP operating system: | Windows XP |
| Microsoft® Windows® Server 2003 operating system: | Windows Server 2003 |
| Microsoft® Windows® operating system: | Windows |

Chapter 1

Before You Start

This chapter provides an explanation of the system environments required for using CAPT (Canon Advanced Printing Technology). It also explains where to find help and information regarding the installation and use of this software.

- Introduction
- System Requirements
- Where to Find Help

Introduction

CAPT (Canon Advanced Printing Technology) gives users of Microsoft Windows 95, Windows 98, Windows Millennium Edition, Windows NT Version 4.0, Windows 2000, Windows XP, or Windows Server 2003 (hereafter called Windows 95/98/Me/NT 4.0/2000/XP/Server 2003) operating system the ability to make full use of the printer. CAPT enables you to print from any Windows application to your machine.

You can acquire information about Canon products and update your software on the Canon home page (<http://www.usa.canon.com>).

System Requirements

The printer driver for Windows 95/98/Me/NT 4.0/2000/XP/Server 2003 can be used in the following system environments:

Operating System Software

Microsoft Windows 95, Microsoft Windows 98, Microsoft Windows Me, Microsoft Windows NT 4.0, Microsoft Windows 2000, Microsoft Windows XP, or Microsoft Windows Server 2003.

Computer

Any computer on which Microsoft Windows 95, Microsoft Windows 98, Microsoft Windows Me, Microsoft Windows NT 4.0, Microsoft Windows 2000, Microsoft Windows XP, or Microsoft Windows Server 2003 runs properly.

Where to Find Help


Here's where to get immediate help if you are having problems installing or using the software, or your machine.

README.TXT file

Any hints, enhancements, limitations, and restrictions you need to be aware of when installing and using your printer driver are included in the README.TXT file provided with the software. The README.TXT file is located in /English/ folder of the software CD-ROM.

Online Help

You can locate additional help for questions you may have regarding your printer in the Online Help file provided with the software. In the printer's Properties dialog box, you can click **Help** to display additional information about every feature and option in CAPT. You can also click

 (Help) in the upper right corner of most dialog boxes, and then click a specific item in the dialog box for help with that item; or right-click a specific item and choose **Help** to access the same help information for the item. See the Online Help for the detailed information on specifying CAPT options.

Getting Help from Canon

Internet

For electronic technical support, the latest driver downloads and answers to frequently asked questions - www.usa.canon.com/consumer

In this manual

See the Troubleshooting chapter 5

Chapter 2

Installing the Printer Driver (Canon Advanced Printing Technology (CAPT))

This chapter describes CAPT (Canon Advanced Printing Technology). It includes the following information:

- What is CAPT
- Installing the Printer Driver
- Printing with CAPT

What is CAPT

Canon Advanced Printing Technology (CAPT)

This is a software that extends the power of the Windows operating system to a printer to speed up and simplify printing. Canon Advanced Printing Technology provides more printing control and bidirectional communication between the printer and a computer running a Windows application.

Installing the Printer Driver

If you are using the imageCLASS D800 series machine as a local printer (connected directly to your computer) follow the steps below.

If the imageCLASS D800 series is already on your network, and you want to start using it, follow the steps in “**Network Users**” on p. 2-28.

If you want to install the imageCLASS D800 series as a network printer, follow the steps in “**Connecting the imageCLASS D800 Series as a Network Printer**” on p. 2-32.



If there are any printer drivers of previous versions installed on your computer, be sure to uninstall those drivers from your computer before installing the iC D800 driver.

Windows 95/98/Me

For installation instructions using the CD-ROM menu, please refer to the *Set-up Instructions*.

USB Users

Windows 98/Me Plug and Play

The following is the installation procedure of plug and play using a USB port under Windows 98.

Before you install the software, make sure you do the following:

- Connect the machine to your computer (→ *Set-up Instructions*).
- Turn on the machine (→ *Set-up Instructions*).
- Start up Windows 98/Me.

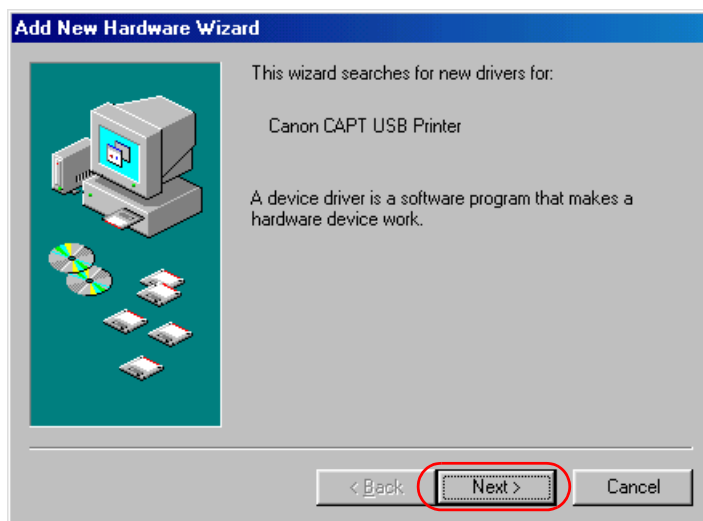


NOTE

Using a USB Port (USB Cable)

- In order to use the printer via USB, your computer must be equipped with a USB port and it is necessary that its operation is approved by the manufacturer.
- If the USB class driver is already installed in your computer, proceed to step8.
- USB is not available for windows 95.

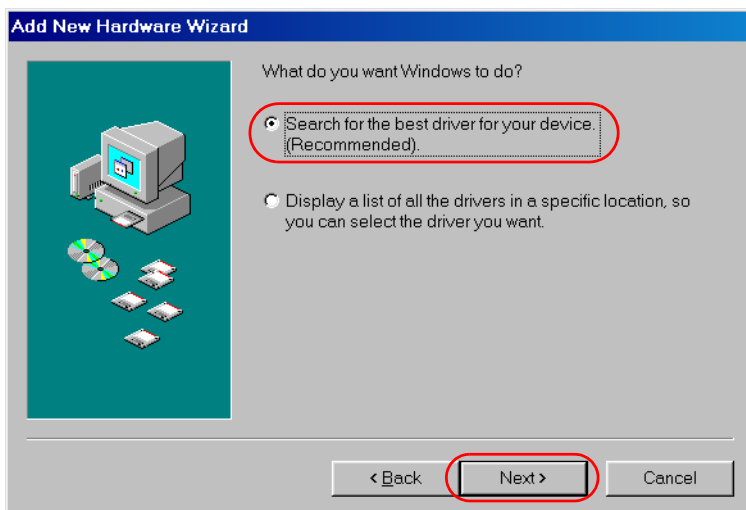
- 1 Plug and Play will activate and the **Add New Hardware Wizard** dialog box appears. Click **Next >**.



NOTE

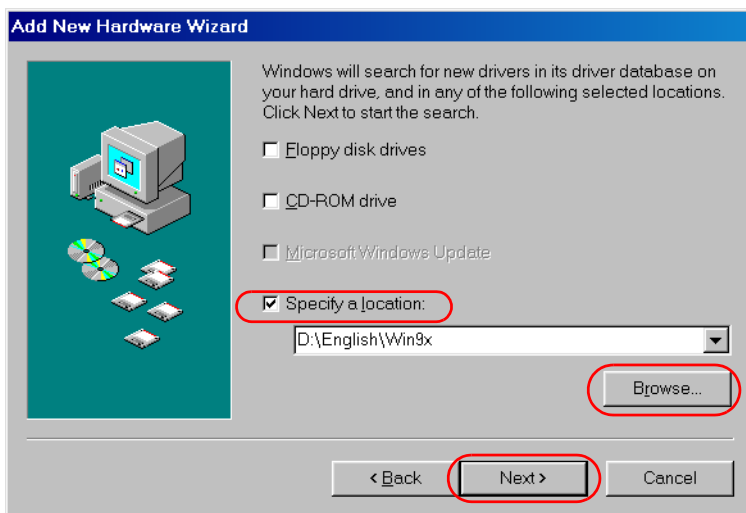
“Unknown” may be displayed as the name of the device.

- 2 Select **Search for the best driver for your device (Recommended)** in the **Add New Hardware Wizard** and click **Next >**.

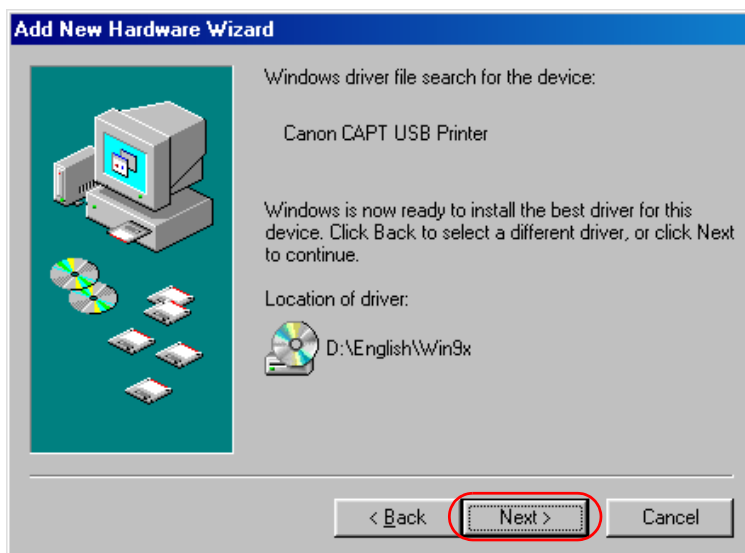


- 3 Place the CD-ROM into the CD-ROM drive.

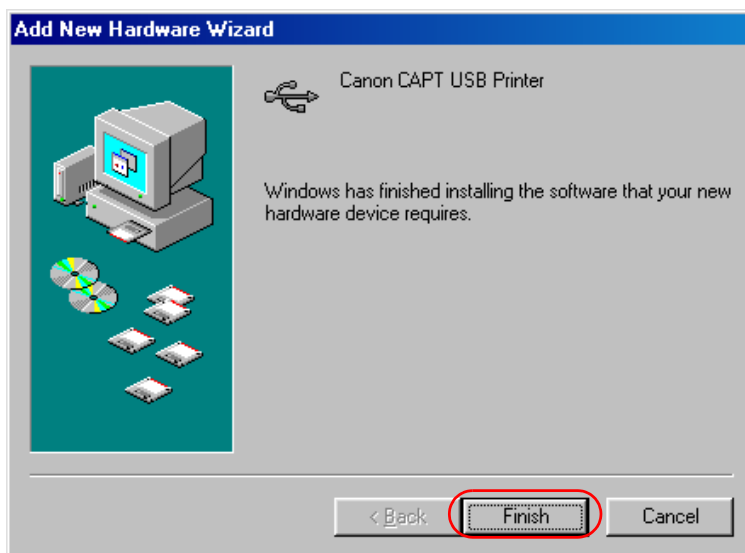
- 4 Select **Specify a location** and click **Browse...** to select the driver in the language that you want to install. For example, if your CD-ROM drive is drive D:, browse to D:\English\Win9x, then click **Next >**.
If you use Windows Me, browse to D:\English\WinMe.



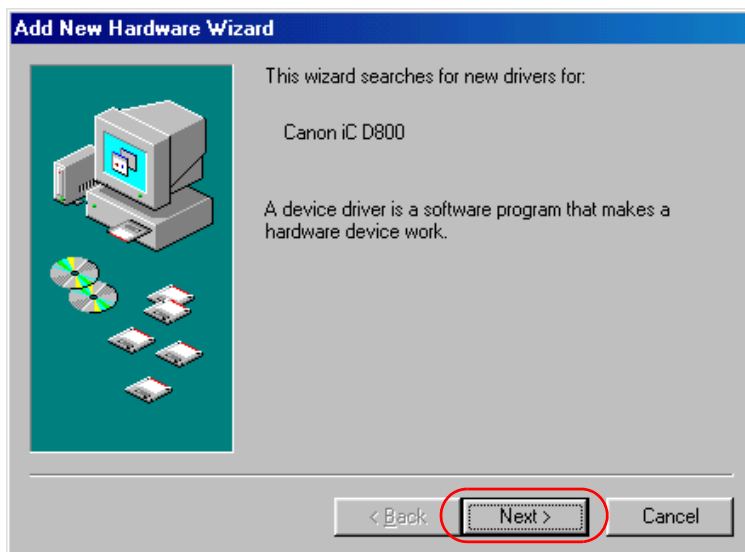
- 5 Click **Next >** on **Windows driver file search for the device.**



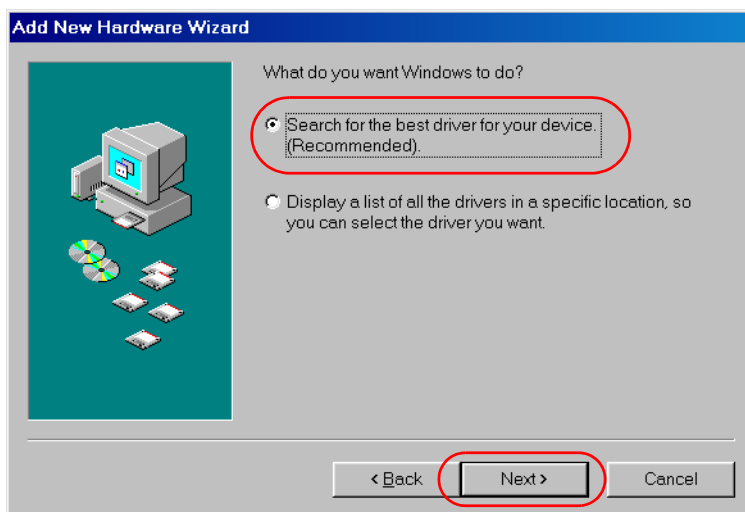
- 6 When the following dialog box appears, click **Finish**.



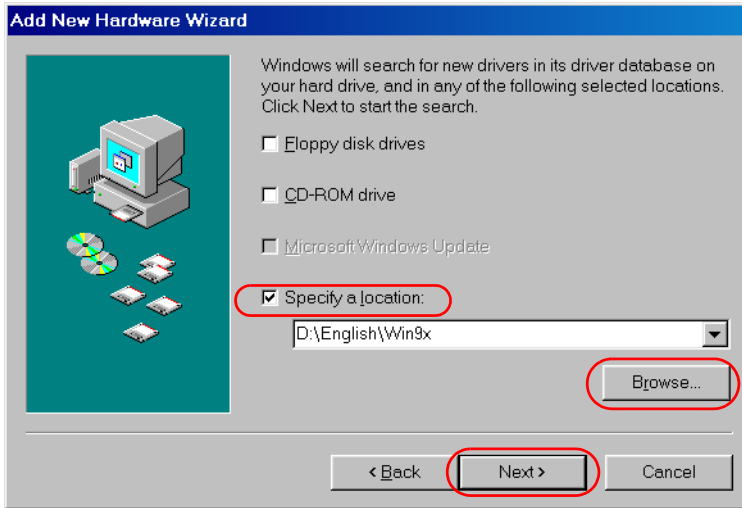
- 7 The Add New Hardware Wizard (Canon iC D800) appears. Click **Next >**.



- 8 Select **Search for the best driver for your device (Recommended)** in the Add New Hardware Wizard → click **Next >**.



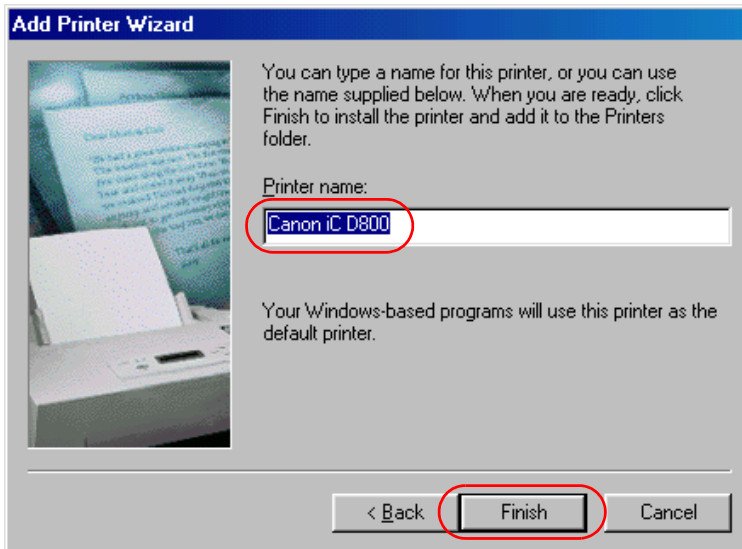
- 9 Click only **Specify a location** and **Browse...** to select the driver you want to install. For example, if your CD-ROM drive is drive “D:”, browse to “D:\English\Win9x” and click **OK**. Confirm that the folder to browse is selected under **Specify a location**, then click **Next >**.



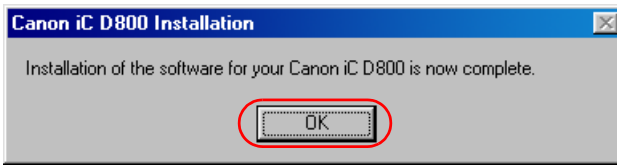
For Windows Me, select **Specify the location of the driver (Advanced)** as D:\English\Win Me → click **Next >** in the **Add New Hardware Wizard**.

- 10 The screen displays the selected driver file. Click **Next >**.

- 11 Type the printer name you wish to use, then click **Finish**.



- 12** When the installation is complete, the following dialog box appears. Click **OK** to close the dialog box. Click **Finish** on the **Add New Hardware Wizard**.



■ Parallel Port Users



If other printer drivers are already installed on the parallel port (LPT 1, etc.) of the computer connected to this printer, uninstall those drivers or select **File:** in the port selection dialog to set them for file output before installing Canon iC D800.

■ Windows 98/Me Plug and Play

The Plug and Play installation of the printer driver for a parallel port under Windows 98/Me follows the same procedure used in USB installation. Refer to the steps 7 to 12 in the procedure using a USB port (→ p. 2-6).

■ Add Printer Wizard

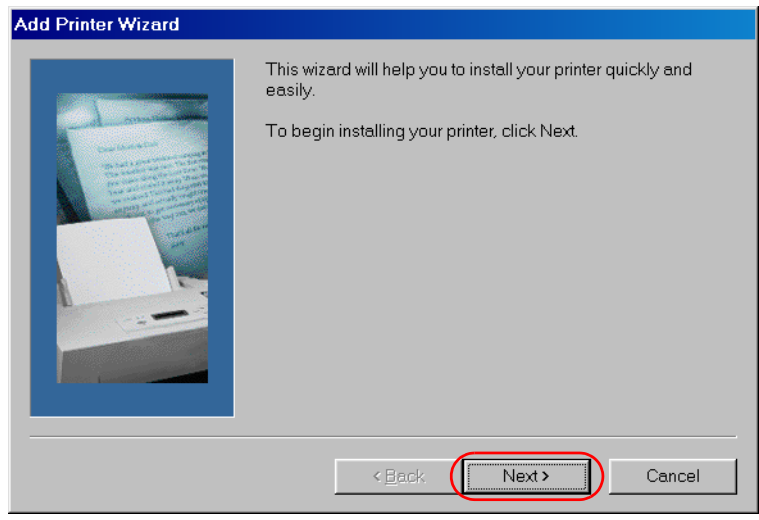
To install CAPT on a local computer using Windows 95/98/Me, you can use the Windows 95/98/Me **Add Printer Wizard**.

The following is the installation procedures using a parallel port under Windows 98.

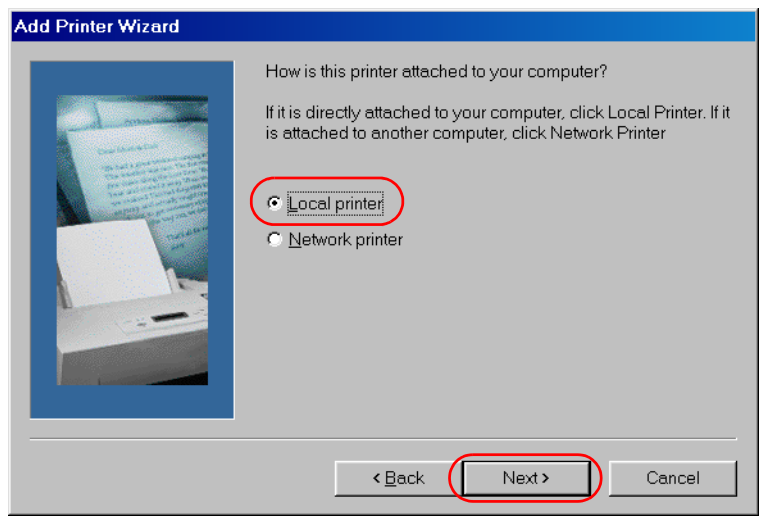
- 1** From the **Start** menu, select **Settings**, then **Printers**. The Printers folder appears.



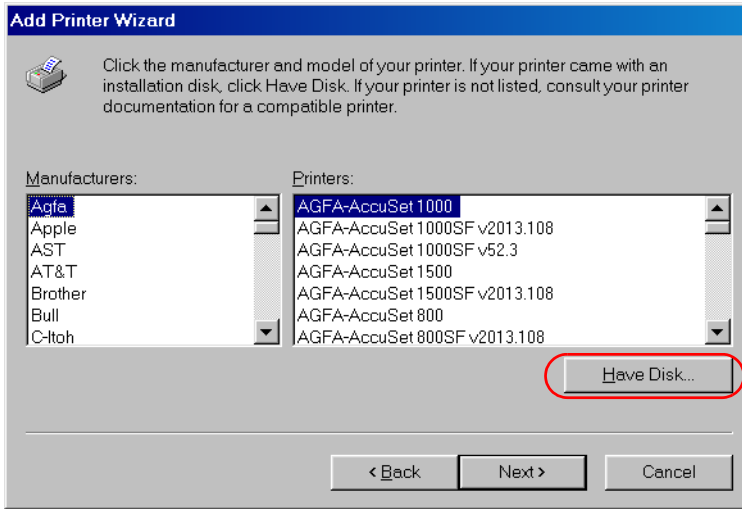
- 2 Double-click the **Add Printer** icon. The **Add Printer Wizard** dialog box appears. Click **Next >**.



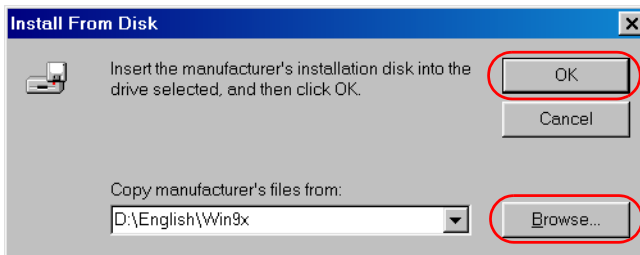
- 3 Select **Local Printer** and click **Next >**.



- 4 The Wizard displays a list of available printers. Click **Have Disk...**



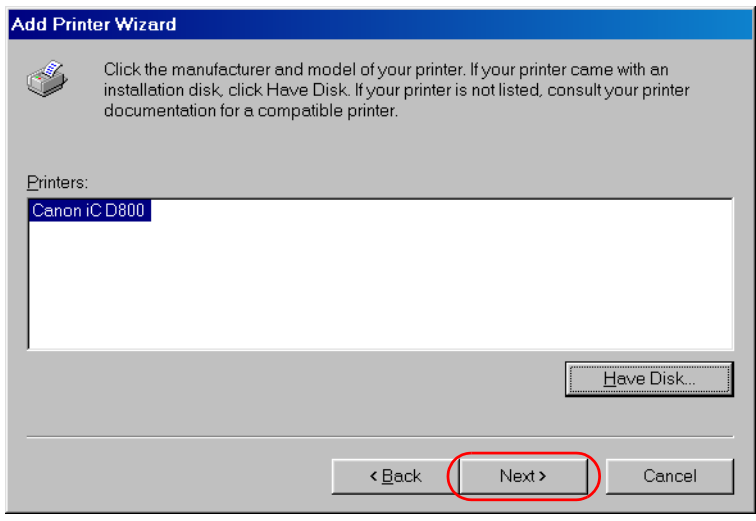
- 5 The **Install From Disk** dialog box appears. Use **Browse...** to select the directory or enter the path name that contains the printer software, then click **OK**.



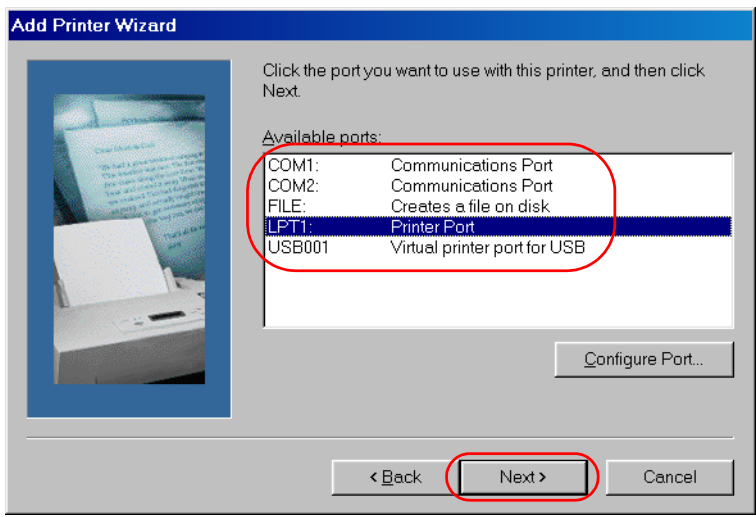
For example, if you are using the CD-ROM to install the software, and your CD-ROM drive is drive D:, the path name would be D:\English\Win9x.

If you use Windows Me, browse to D:\English\WinMe.

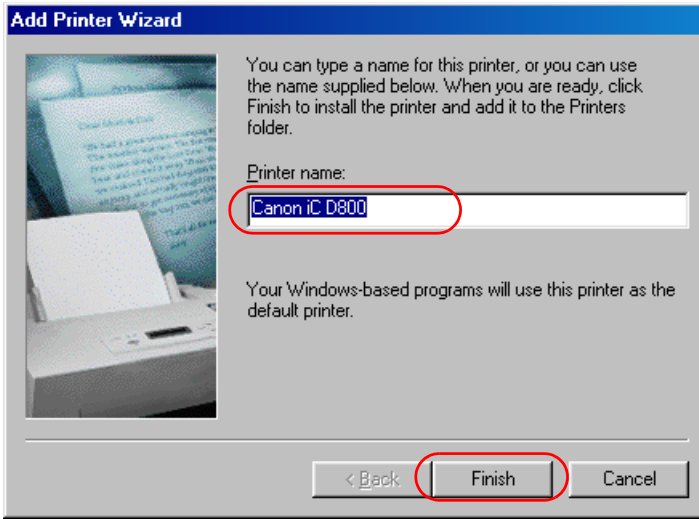
6 Select the printer, and click **Next >**.



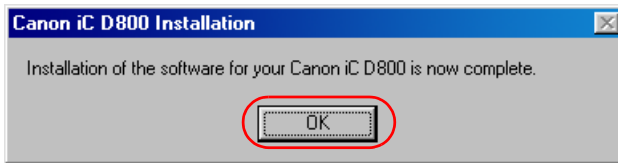
7 Select the printer's port, and then click **Next >**.



- 8 Enter the name you wish to use, then click **Finish**.



- 9 When the installation is complete, the following dialog box appears. To close the dialog box, click **OK**. Click **Finish** on the **Add New Hardware Wizard**.



Windows NT 4.0/2000/XP/Server 2003

USB Users

■ Windows 2000/XP/Server 2003 Plug and Play

The following is the installation procedure of plug and play using a USB port under Windows 2000.

Before you install the software, make sure you do the following:

- Connect the machine to your computer (→ *Set-up Instructions*).
- Turn on the machine (→ *Set-up Instructions*).
- Start up Windows 2000/XP/Server 2003.



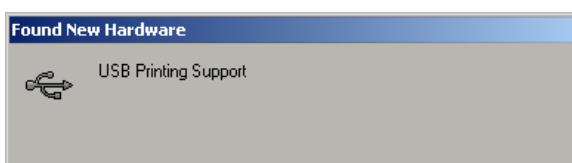
NOTE

Using a USB Port (USB Cable)

- In order to use the printer via USB, your computer must be equipped with a USB port and it is necessary that its operation is approved by the manufacturer.
- USB is not available for Windows NT 4.0.

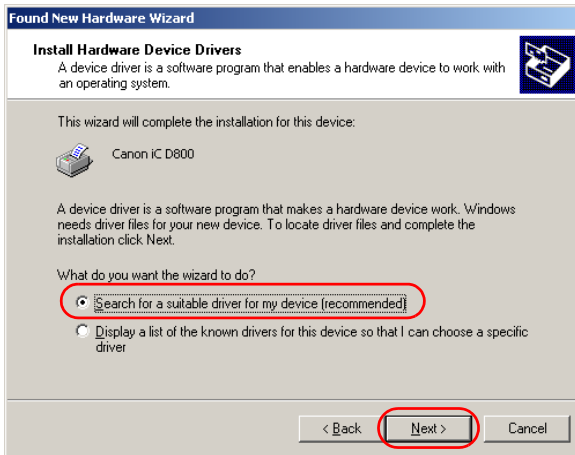
1 Log on as member of Administrators. The full control access right for the printer is necessary for the installation of CAPT.

2 **Plug and Play** will activate and the USB class driver, and “USB Printing Support” is automatically detected and installed.



3 The **Found New Hardware Wizard** dialog box appears. Click **Next >**.

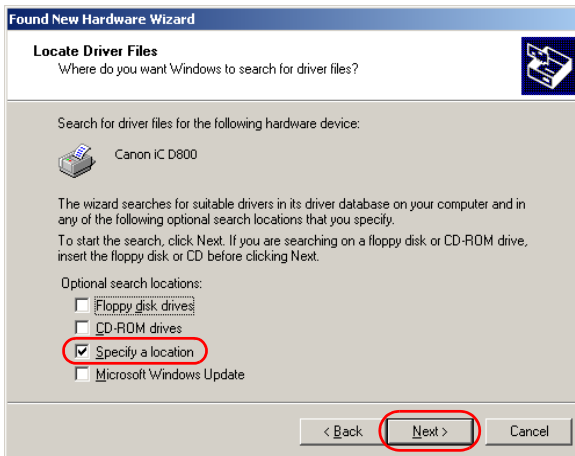
Select **Search for a suitable driver for my device (recommended)** in the **Found New Hardware Wizard** and click **Next >**.



NOTE

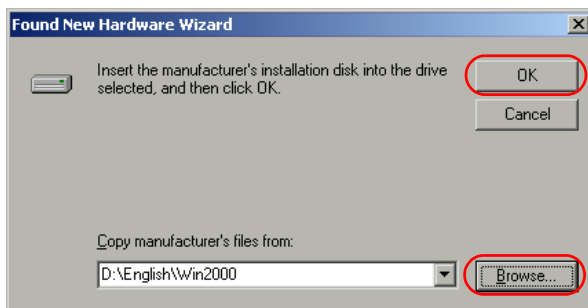
“Unknown” may be displayed as the name of the device.

4 Select **Specify a location** and click **Next >**.



5 The **Found New Hardware Wizard** dialog box appears. Click **Browse...** to select the driver in the language that you want to install. For example, if your CD-ROM drive is drive D:, browse to D:\English\Win2000, then click **OK**.

If you use Windows XP/Server 2003, and your CD-ROM drive is drive D:, browse to D:\English\WinXP (For Server 2003 the path name is the same as for Windows XP.).

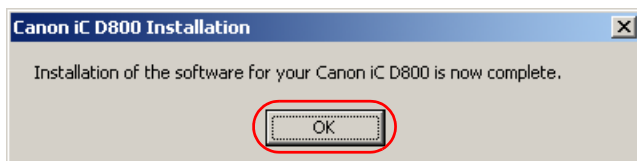


Click **Next >** on **Driver Files Search Results**.



Click **Yes** if the **Digital Signature Not Found** dialog box appears.

6 When the installation is complete, the following dialog box appears. Click **OK** to close the dialog box. Click **Finish** on the **Found New Hardware Wizard**.



Parallel Port Users



IMPORTANT

If other printer drivers are already installed on the parallel port (LPT 1, etc.) of the computer connected to this printer, uninstall those drivers or select **File:** in the port selection dialog to set them for file output before installing Canon iC D800.

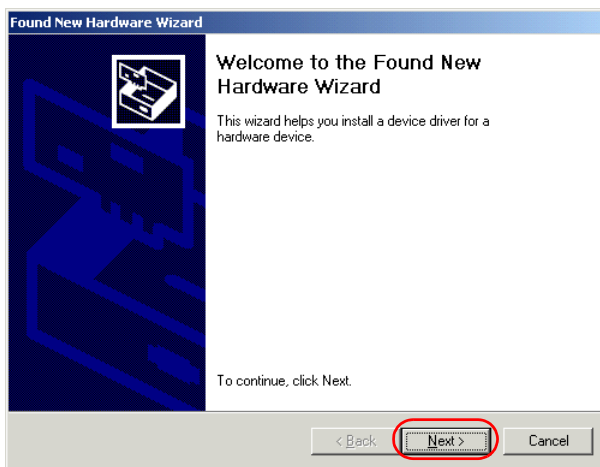
Windows 2000/XP/Server 2003 Plug and Play

The following is the installation procedure of plug and play using a parallel port under Windows 2000.

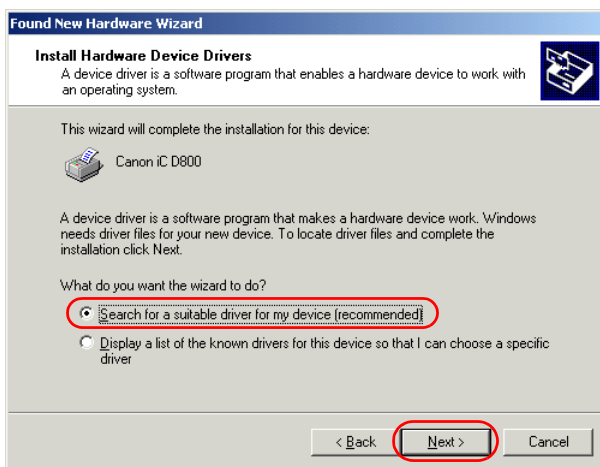
Before you install the software, make sure you do the following:

- Connect the machine to your computer (→ *Set-up Instructions*).
- Turn on the machine (→ *Set-up Instructions*).
- Start up Windows 2000/XP/Server 2003.

- 1 **Plug and Play** will activate and the **Found New Hardware Wizard** dialog box appears. Click **Next >**.



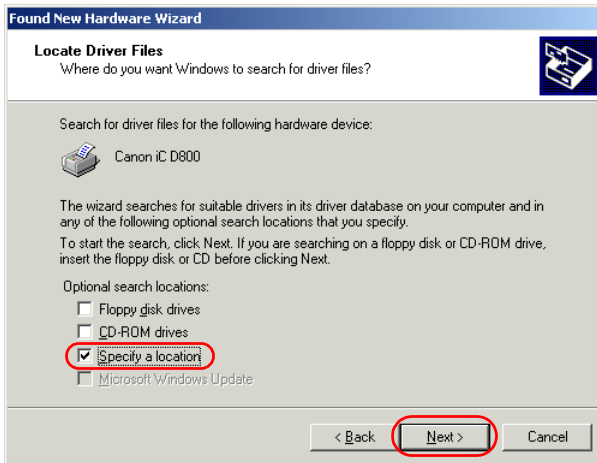
- 2 Select **Search for a suitable driver for my device (recommended)** in the **Found New Hardware Wizard** and click **Next >**.



NOTE

“Unknown” may be displayed as the name of the device.

3 Select **Specify a location** and click **Next >**.



4 The **Found New Hardware Wizard** dialog box appears. Click **Browse...** to select the driver in the language that you want to install. For example, if your CD-ROM drive is drive D:, browse to D:\English\Win2000, then click **OK**.
If you use Windows XP/Server 2003, and your CD-ROM drive is drive D:, browse to D:\English\WinXP (For Server 2003 the path name is the same as for Windows XP.).

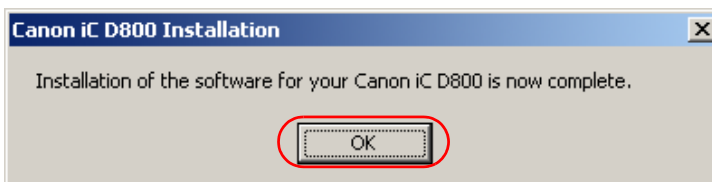


Click **Next >** on **Driver Files Search Results**.



Click **Yes** if the **Digital Signature Not Found** dialog box appears.

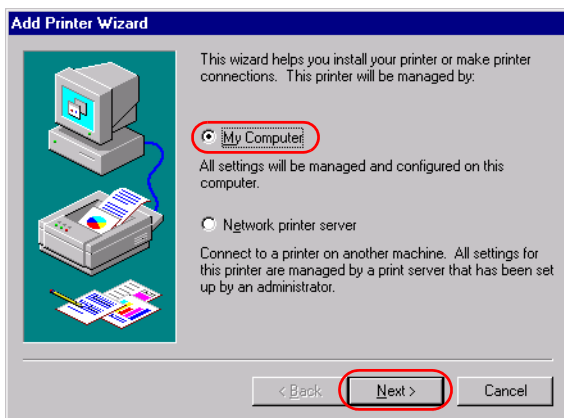
5 When the installation is complete, the following dialog box appears. Click **OK** to close the dialog box. Click **Finish** on the **Found New Hardware Wizard**.



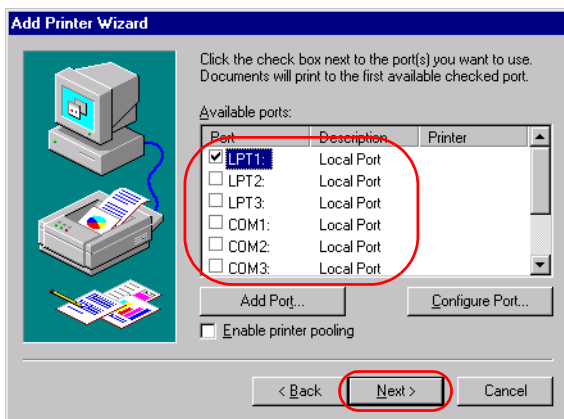
■ Windows NT 4.0 Add Printer Wizard

To install CAPT on a local computer using Windows NT 4.0, you can use the Windows NT 4.0 **Add Printer Wizard**.

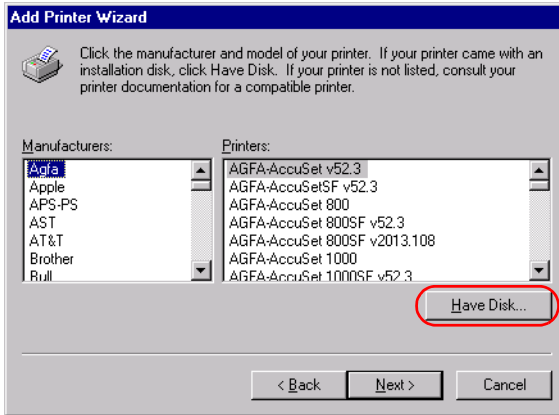
- 1 Log on as member of Administrators. The full control access right for the printer is necessary for the installation of CAPT.
- 2 From the **Start** menu, select **Settings**, then **Printers**. The **Printers** folder appears.
- 3 Double-click the **Add Printer** icon. The **Add Printer Wizard** dialog box appears.



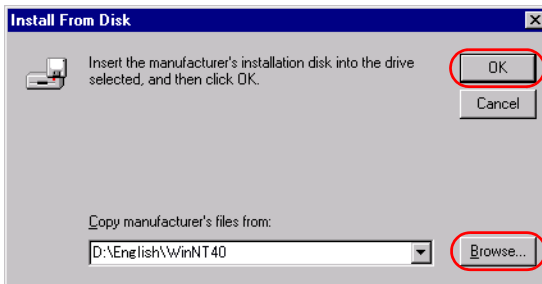
- 4 Select **My Computer**, then click **Next >**.
- 5 Select the printer port you want to use, then click **Next >**.



- 6 Click **Have Disk...** in the **Manufacturers/Printers** dialog box.

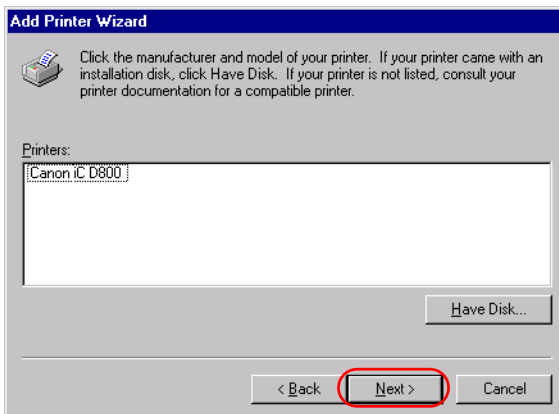


- 7 The **Install From Disk** dialog box appears. Use **Browse...** to select the directory or enter the path name that contains CAPT, then click **OK**.

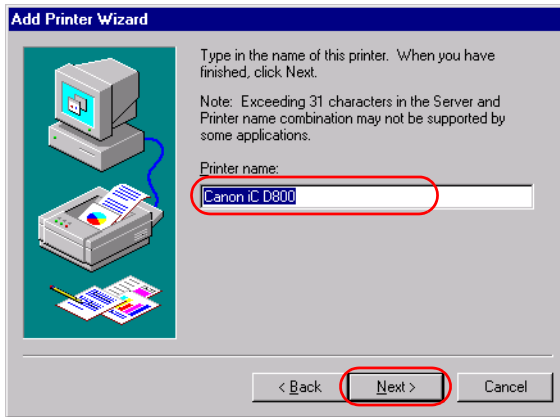


For example, if you are using the CD-ROM to install CAPT, and your CD-ROM drive is drive D:, the path name would be D:\English\WinNT40.

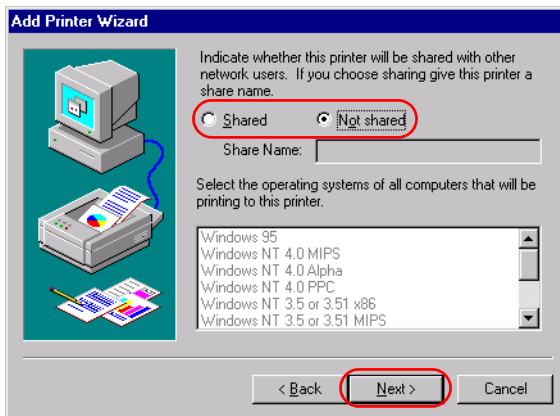
- 8 Select your printer model from the list of printers displayed, then click **Next >**.



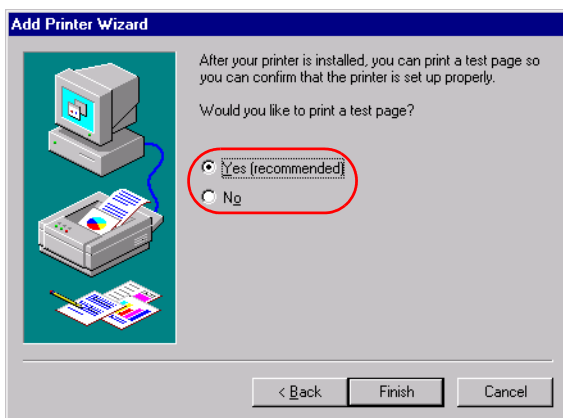
- 9 Click **Next >** to accept the default printer name, or enter the name you wish to use, then click **Next >**.



- 10 Select whether this printer is shared with other computers. If it is shared, select all the operating systems that will use this printer. Click **Next >**.

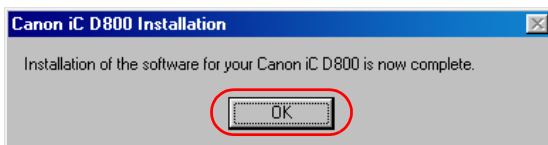


- 11 Click **Yes (recommended)** if you want to print a test page, or **No** if you do not want to print a test page, then click **Finish**.

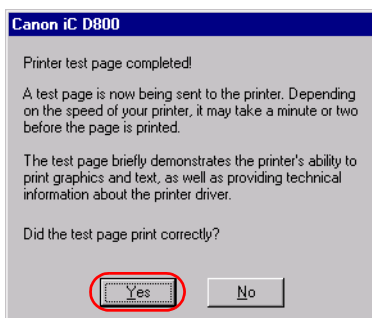


Windows creates the **Canon iC D800** icon on the Desktop, and the **Canon iC D800** icon is added to the **Printers** folder.

- 12 When the installation is complete, the following dialog box appears. Click **OK** to close the dialog box.



- 13 If you opted to print a test page, the test page prints after the installation completes, and the following dialog box appears. If the test page printed correctly, click **Yes**.

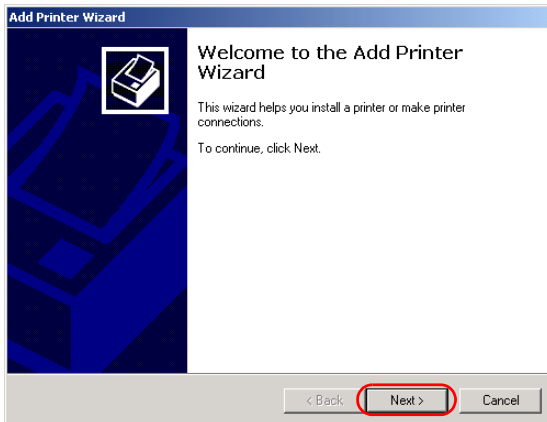


■ Windows 2000/XP/Server 2003 Add Printer Wizard

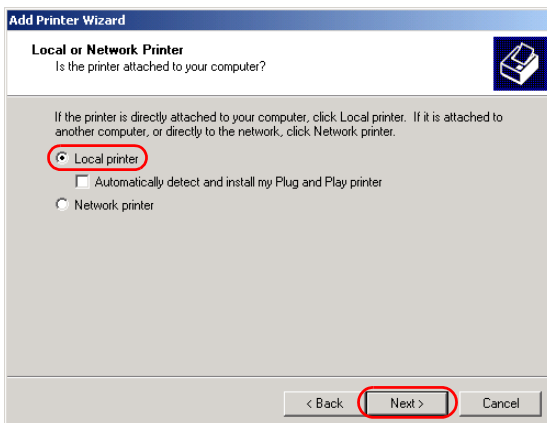
To install CAPT on a local computer using Windows 2000/XP/Server 2003, you can use the **Add Printer Wizard**.

The following is the installation procedure using a parallel port under Windows 2000/XP/Server 2003.

- 1 Log on as member of Administrators. The full control access right for the printer is necessary for the installation of CAPT.
- 2 From the **Start** menu, select **Settings**, then **Printers** (in Windows XP/Server 2003, select **Printers and Faxes** from **Start** menu). The **Printers** (in Windows XP/Server 2003, **Printers and Faxes**) folder appears.
- 3 Double-click the **Add Printer** icon (in Windows XP/Server 2003, click **Add a printer** in **Printer Tasks**). The **Add Printer Wizard** dialog box appears. Click **Next >**.



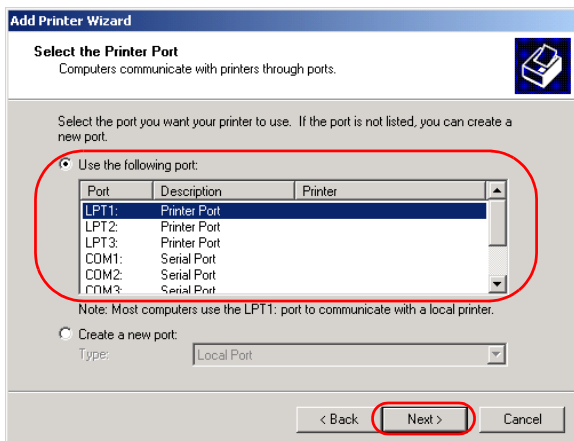
- 4 Select **Local printer**, then click **Next >**.



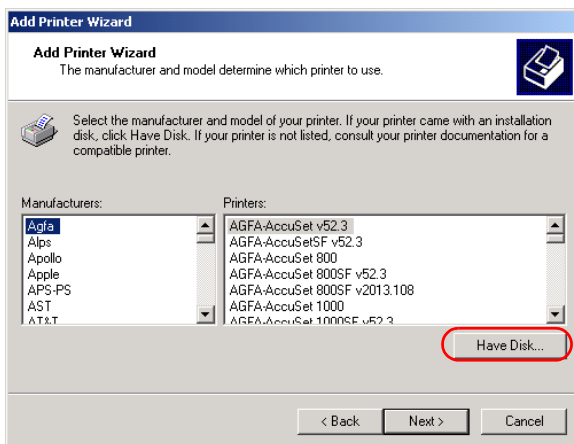


Checking “Automatically detect and install my Plug and Play printer” is not recommended.

5 Select the printer port you want to use, then click **Next >**.

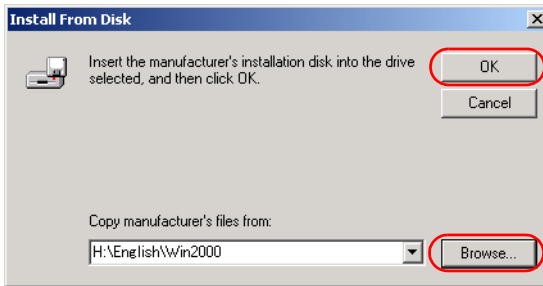


6 Click **Have Disk...** in the **Manufacturers/Printers** dialog box.



2

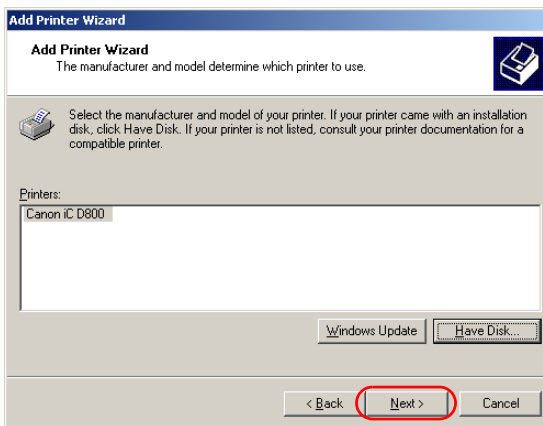
- 7 The **Install From Disk** dialog box appears. Use **Browse...** to select the directory or enter the path name that contains CAPT, then click **OK**.



For example, if you are using the CD-ROM to install CAPT, and your CD-ROM drive is drive D:, the path name would be D:\English\Win2000.

If you use Windows XP/Server 2003, and your CD-ROM drive is drive D:, browse to D:\English\WinXP (For Server 2003 the path name is the same as for Windows XP.).

- 8 Select your printer model from the list of printers displayed, then click **Next >**.



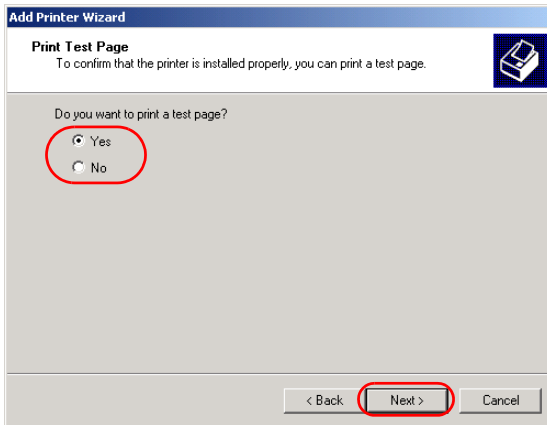
- 9 Click **Next >** to accept the default printer name, or enter the name you wish to use, then click **Next >**.

The screenshot shows the 'Add Printer Wizard' window with the title 'Add Printer Wizard'. The main heading is 'Name Your Printer' with the instruction 'You must assign a name for this printer.' Below this, a text box labeled 'Printer name:' contains the text 'Canon iC D800'. At the bottom of the window, there are three buttons: '< Back', 'Next >', and 'Cancel'. The 'Next >' button is highlighted with a red circle.

- 10 Select whether this printer is shared with other computers. Click **Next >**.

The screenshot shows the 'Add Printer Wizard' window with the title 'Add Printer Wizard'. The main heading is 'Printer Sharing' with the instruction 'You can share this printer with other network users.' Below this, a text box labeled 'Share as:' is visible. At the bottom of the window, there are three buttons: '< Back', 'Next >', and 'Cancel'. The 'Next >' button is highlighted with a red circle.

- 11 Click **Yes** if you want to print a test page, or **No** if you do not want to print a test page, then click **Next >**.



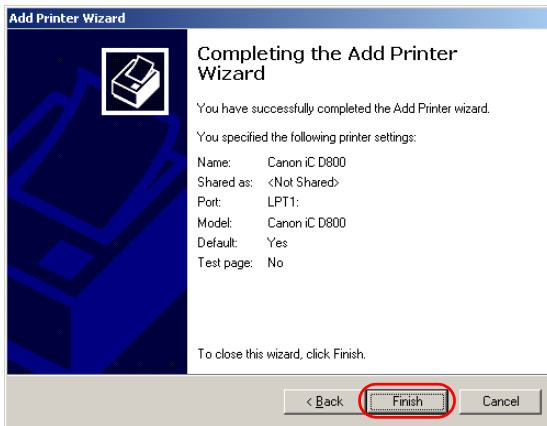
- 12 Click **Finish**.



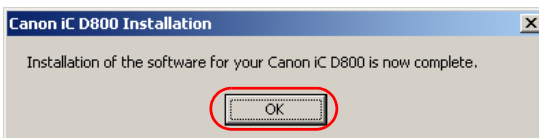
NOTE

Click **Yes** if the **Digital Signature Not Found** dialog box appears.

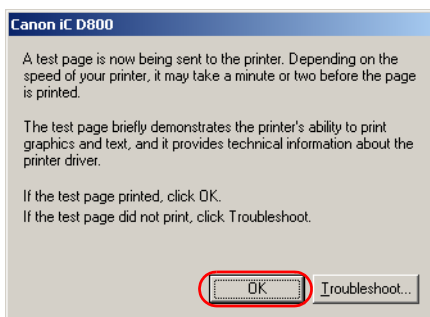
Windows creates the **Canon iC D800** icon on the Desktop, and the **Canon iC D800** icon is added to the **Printers** folder.



- 13 When the installation is complete, the following dialog box appears. Click **OK** to close the dialog box.



- 14** If you opted to print a test page, the test page prints after the installation completes, and the following dialog box appears. If the test page printed correctly, click **OK**.



Network Users

■ Connecting to the imageCLASS D800 Series Already on Your Network

If the imageCLASS D800 series is already on your network you can install it in two different ways. The easiest way is using automatic network download. If network download is not available, you can use the **Add Printer Wizard**.

■ Network Download

Windows 95/98/Me and Windows NT 4.0/2000/XP/Server 2003 clients can download the drivers for the imageCLASS D800 series automatically.

- 1 Open Explorer and browse the network until you can see the **Canon iC D800** printer icon.
- 2 Double-click the printer icon, or drag the printer icon to the **Printers** (in Windows XP/Server 2003, **Printers and Faxes**) folder.
- 3 Follow the instructions on screen.



NOTE

- Service Pack 4 or later must be installed on Windows NT servers in order for Windows 95/98/Me clients to use network download.
- Windows NT 4.0/2000/XP/Server 2003 clients cannot download the driver from Windows 95/98/Me servers.

■ Windows 95/98/Me Add Printer Wizard

To install CAPT for a network printer, you can use the Windows 95/98/Me **Add Printer Wizard**.

- 1 From the **Start** menu, select **Settings**, then **Printers**. The **Printers** folder appears.
- 2 Double-click the **Add Printer** icon. The **Add Printer Wizard** dialog box appears.
- 3 Select **Network printer**, then click **Next >**.



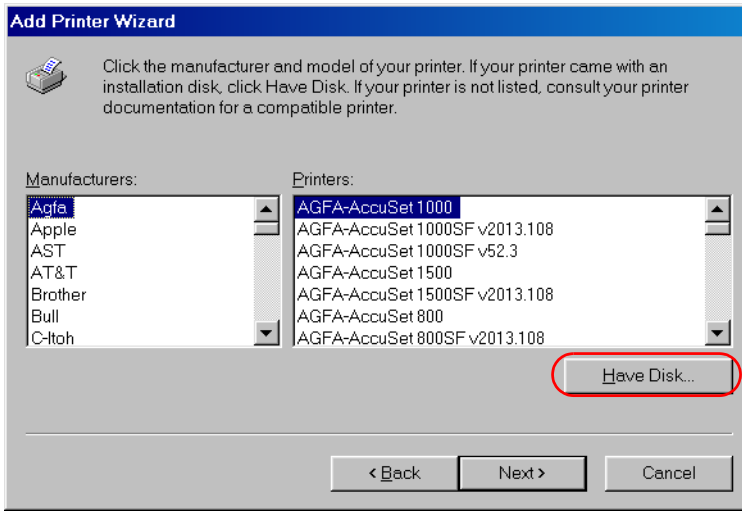
- 4 Enter the network path or print queue that you want to connect to, or use **Browse...** to open the **Browse for Printer** dialog box to select the printer.



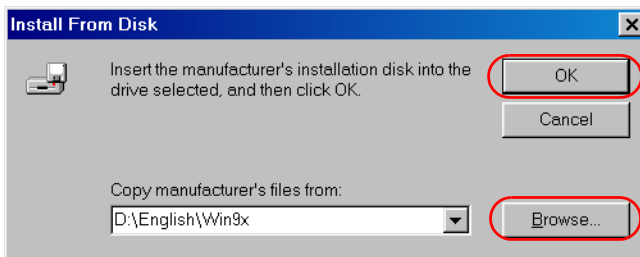
NOTE

Depending on your network environment, the installation of the driver may be carried out automatically. In this case you need not perform steps 5 to 8 below.

- 5 The Wizard displays a list of available printers. Click **Have Disk...**



- 6 The **Install From Disk** dialog box appears. Use **Browse...** to select the directory or enter the path name that contains the printer software, then click **OK**.



- 7 If the server is a Windows 95/98/Me computer, you can enter a name for the printer, or accept the default name and click **Next >**.



NOTE

If the connection fails you are able to install the printer, but you will not be able to use the printer until it comes back online.

- 8 Follow the instructions on screen to complete installation.

■ Windows NT 4.0/2000/XP/Server 2003 Add Printer Wizard

To install CAPT for a network printer you can use the Windows NT 4.0/2000/XP/Server 2003 **Add Printer Wizard**.

- 1** Log on as a member of Administrators. The full control access rights for the printer is necessary for the installation of CAPT.
- 2** From the **Start** menu, select **Settings**, then **Printers** (in Windows XP/Server 2003, select **Printers and Faxes** from **Start** menu). The **Printers** (in Windows XP/Server 2003, **Printers and Faxes**) folder appears.
- 3** Double-click the **Add Printer** icon (in Windows XP/Server 2003, click **Add a printer** in **Printer Tasks**). The **Add Printer Wizard** dialog box appears.
- 4** Select **Network printer server** (in Windows XP/Server 2003, select **A network printer, or a printer attached to another computer**), then click **Next >**. The **Connect to Printer (Specify a Printer** in Windows XP/Server 2003) dialog appears.
- 5** Select the printer you want to connect to, then click **OK**. If the printer name is invalid, it means that the client could not connect to the network printer specified. If a suitable driver is not found, it probably means that the server is a Windows 95/98/Me computer.
- 6** Follow the instructions on the screen to complete the installation.

Printer Sharing

By using your imageCLASS D800 series machine on a network, users can share the device for printing. Printer sharing with the imageCLASS D800 series requires that both the print server and the client devices are using Windows 95 or later, or Windows NT 4.0 or later. The print server and client do not need to use the same operating system, and it is possible to print from a Windows 95/98/Me client to a Windows NT 4.0/2000/XP/Server 2003 print server, or vice versa.

You can start printing simply by starting the server, even if the server was not running when the client was started.

If the server is running on Windows NT 4.0/2000/XP/Server 2003, you can print, even if no one is logged into the server. Please note that there is no status display on the server when no one is logged in. The status display is shown on the client.

■ Connecting the imageCLASS D800 Series as a Network Printer

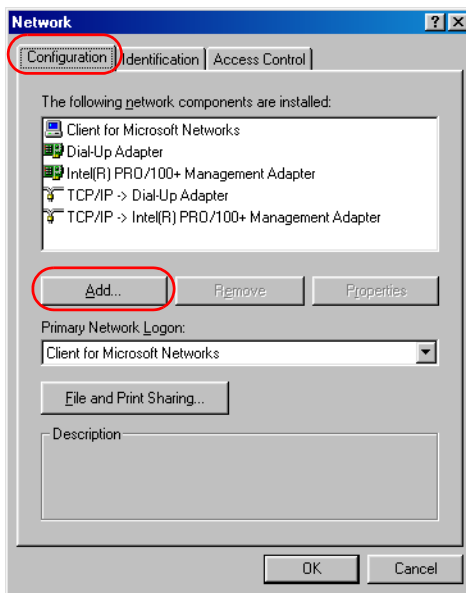
If you plan to share the imageCLASS D800 series on a network, install the print server locally, then make the following settings. See your print server system documentation for more information.

■ Windows 95/98/Me Server Settings

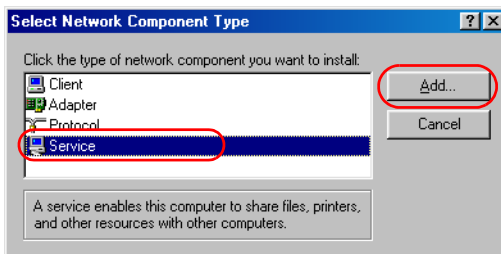
Network Settings

1 Double-click the **Network** icon in the Control Panel.

2 Select the **Configuration** tab, then click **Add...**.



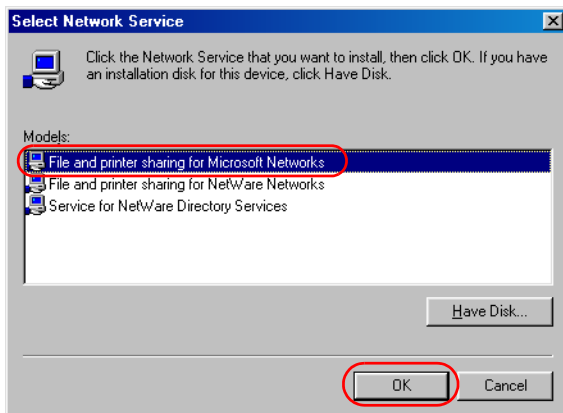
3 Select **Service**, then click **Add...**.



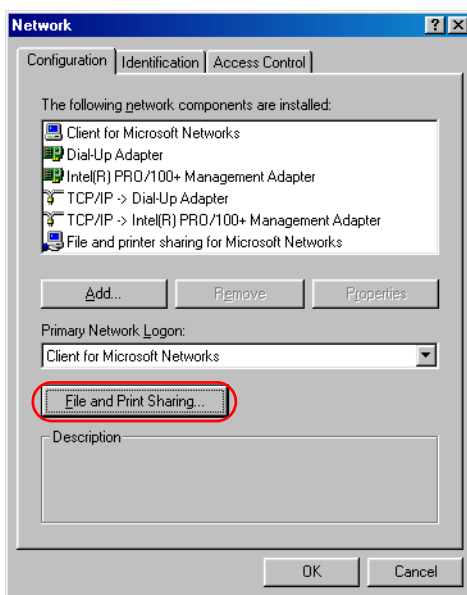
4 Select **Microsoft** in the Manufacturers list box.

2

- 5** Select **File and printer sharing for Microsoft Networks** in the Network Services box, then click **OK**.

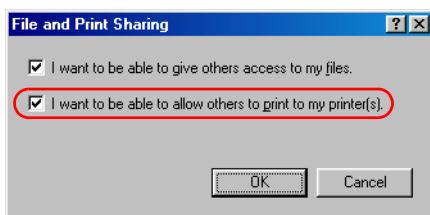


- 6** Click **File and Print Sharing...**

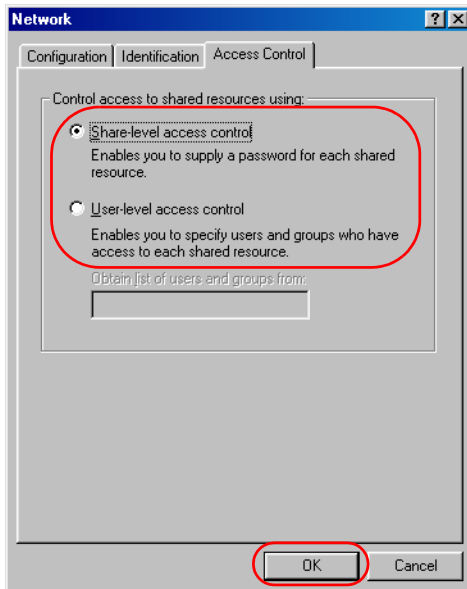


NOTE

Be sure there is a check by “**I want to be able to allow others to print to my printer(s)**”.



- 7** Select the **Access Control** tab and check either “**Share-level access control**” or “**User-level access control**”.

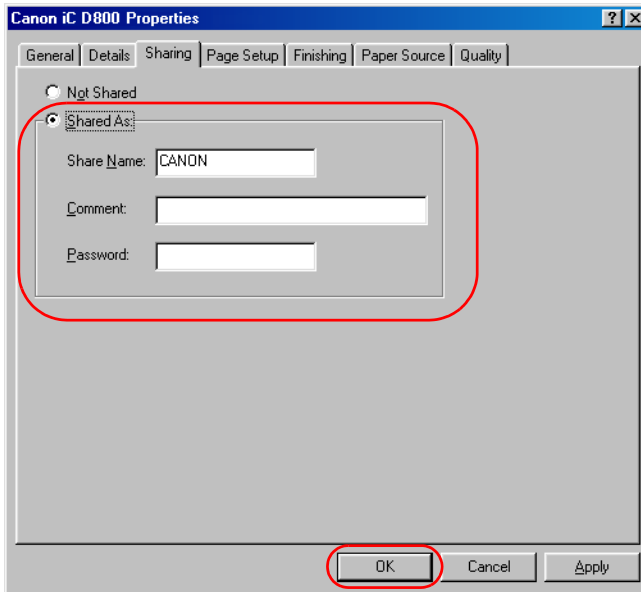


- 8** Click **OK** and then restart Windows.

Printer Settings

Share-level access control

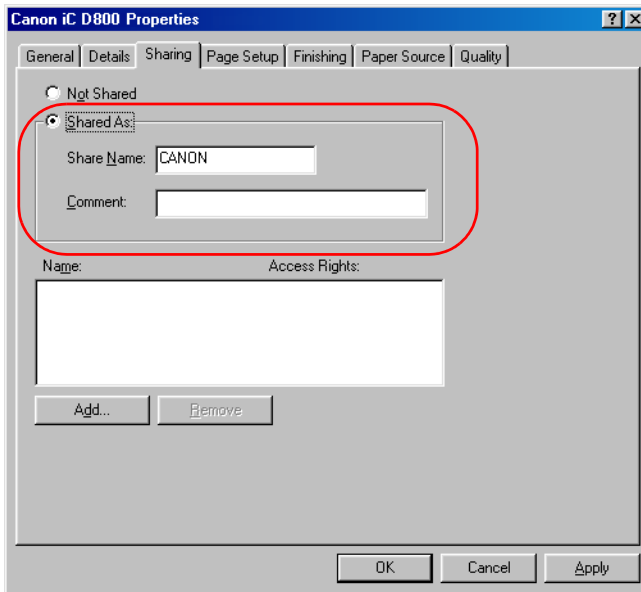
- 1 Open the **Canon iC D800 Properties** window, then check “**Shared As**” in the **Sharing** tab.



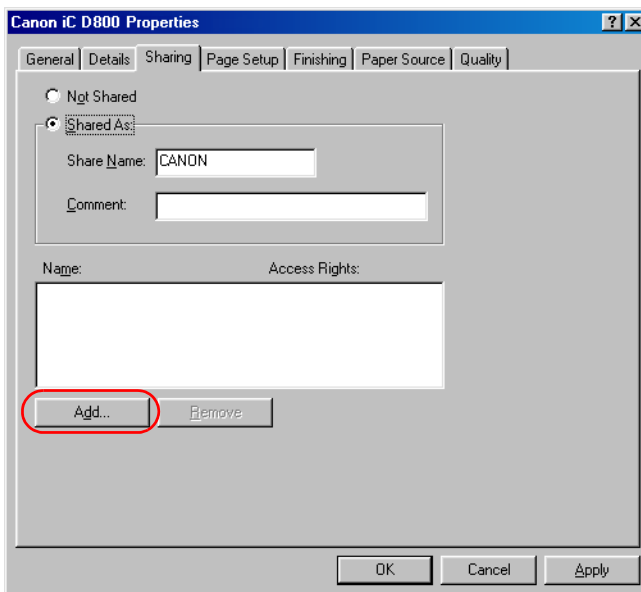
- 2 Enter the **Share Name**, **Comment**, and **Password** as needed.
- 3 Click **OK**.

User-level access control

- 1 Open the **Canon iC D800 Properties** window, then check “**Shared As**” in the **Sharing** tab.



- 2 Enter the **Share Name** and **Comment** as needed.
- 3 Click **Add...**, and select the users allowed to access the printer.



4 Click **OK** when you have finished adding users.

5 Click **OK** again.



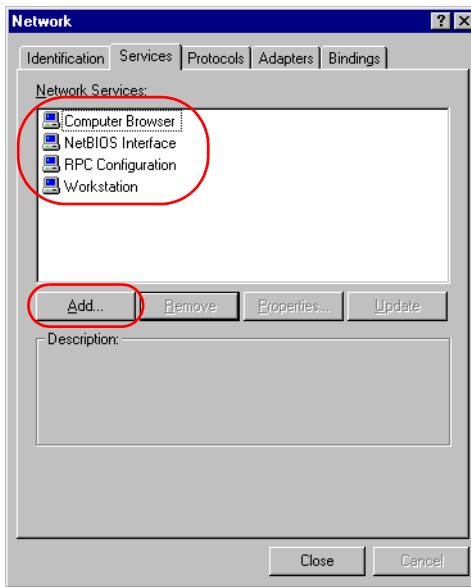
NOTE

Do not enter space or special character in the **Share Name**.

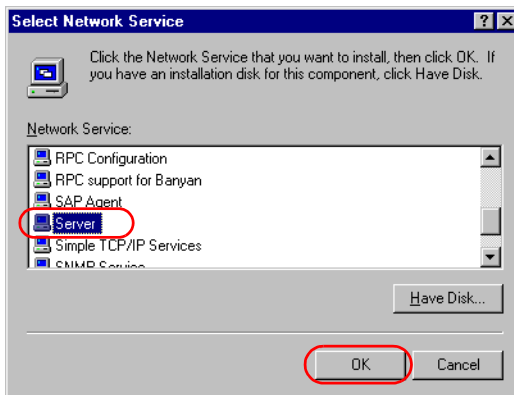
■ Windows NT 4.0/2000/XP/Server 2003 Server Settings

Add Server Service (Windows NT 4.0)

- 1 Double-click the **Network** icon from the **Control Panel**.
- 2 Select the **Services** tab, and if the **Server** is not shown, click **Add...**.



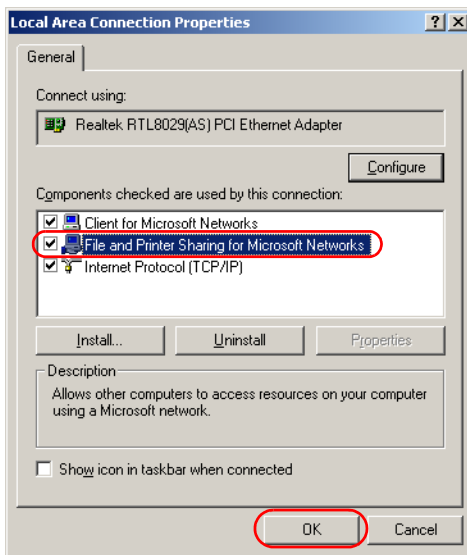
- 3 Select the **Server**, and click **OK**.



- 4 Restart Windows.

Add Server Service (Windows 2000)

- 1 From the **Start** menu, select **Settings**, then **Network and Dial-up Connections**. The **Network and Dial-up Connections** folder appears.
- 2 Right-click the **Local Area Connection** icon, then select **Properties** from the menu. The **Local Area Connection Properties** dialog box appears.
- 3 Select **File and Printer Sharing for Microsoft Networks**, then click **OK**.

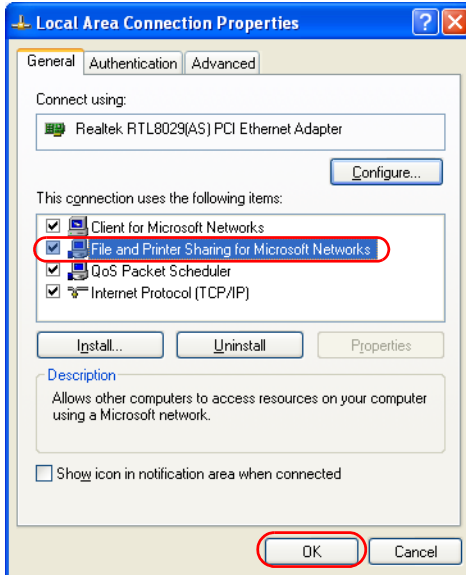


Add Server Service (Windows XP/Server 2003)*

- 1 From the **Start** menu, select **Control Panel**. The **Control Panel** folder appears.
- 2 Click **Network and Internet Connections**. **Network and Internet Connections** folder appears.
- 3 Click **Network Connections**. **Network Connections** folder appears.
- 4 Right-click the **Local Area Connection** icon, then select **Properties** from the menu. The **Local Area Connection Properties** dialog box appears.

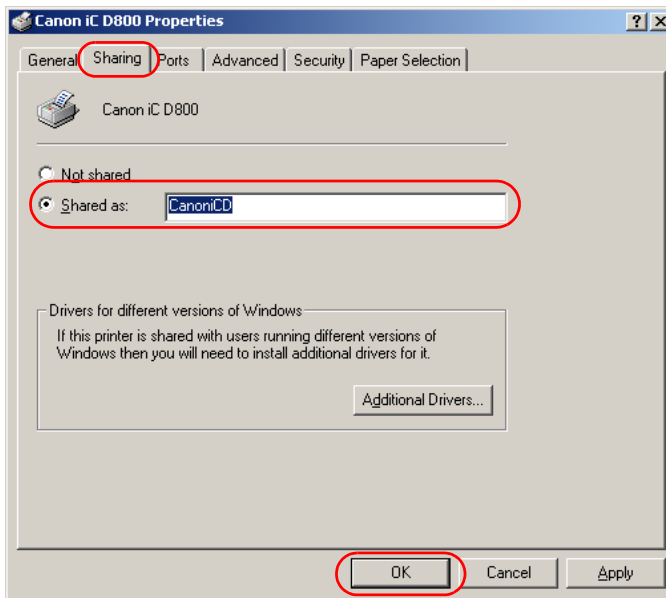
* The procedure for Windows XP is given for Category View Mode.

5 Select **File and Printer Sharing for Microsoft Networks**, then click **OK**.



Printer Sharing Settings

- 1 Open the **Canon iC D800 Properties** window, then check “**Shared as**” in the **Sharing** tab.



- 2 Enter the **Share Name** as needed.
- 3 Click **OK**. The printer icon changes to indicate sharing.



Sharing settings may also be made during installation.

■ Status Display

The status of a shared printer displays on both the print server and client computer, and job operations can execute from either.

Status display requires status exchanges between the print server and client using TCP/IP or NetBEUI protocols. Status display is not supported if IPX/SPX is the only protocol used.

Canon iC D800 Group

After installation is complete, CAPT program group is created.



You can select the following from the **Canon iC D800** group:

- **Canon iC D800 Help**
Selects the Canon iC D800 Help file for CAPT.
- **Canon iC D800 Status Window**
Displays the Canon iC D800 Status Window.
- **Canon iC D800 Trouble Shooter**
Starts the Trouble Shooter program for CAPT. It helps you solve printing problems in Windows 95/98/Me or NT 4.0/2000/XP/Server 2003. (→ Chapter 5, *Troubleshooting*)
- **Canon iC D800 Uninstallation**
Starts the uninstall program for CAPT. If CAPT is not working properly, it might help to uninstall and then install it again. (→ Chapter 5, *Troubleshooting*)

Printing with CAPT

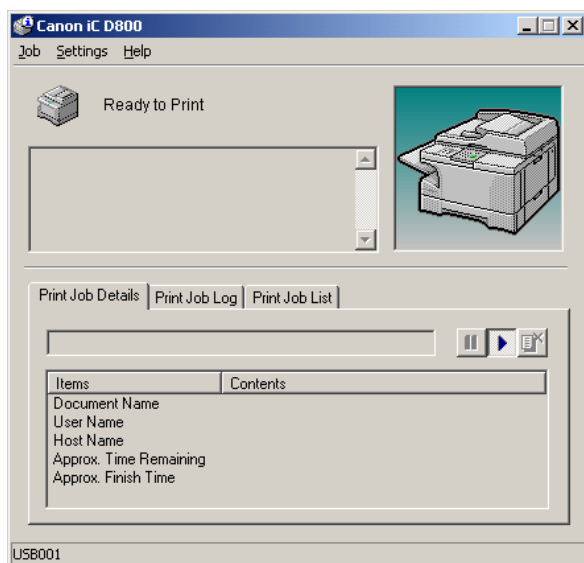
CAPT offers bidirectional communication between the computer and machine. To take advantage of the bidirectional communication, one end of a bidirectional parallel cable connects to the printer and the other end connects directly to your computer.



NOTE

You must use a bidirectional cable for proper operation.

Every time you print, CAPT displays the **Canon iC D800** Status Window. This window shows you the paper moving through the machine, how long it will take to print the document, and how much of the document has printed. From the Status Window you can pause, resume, or delete the current print job.



If a printing problem occurs, the **Canon iC D800** Status Window automatically opens and identifies the problem.

Before using CAPT, make sure you select it as your current Windows printer driver.

Chapter 3

Printer Properties

This chapter describes the dialogs and settings on the Printer Properties screens. It includes the following information:

- Windows 95/98/Me Printer Properties
- Windows NT 4.0/2000/XP/Server 2003 Printer Properties and Default Document Properties

Windows 95/98/Me Printer Properties

With CAPT, you initiate printing as you normally would from a Windows application. From the **Print** dialog box, usually accessed from an application's **File** menu, you can select **Properties** to proceed to the **Canon iC D800 Properties** dialog box and its printing options.



- You can open the **Properties** dialog box from the **Printers** folder. The number of tabs displayed in the **Properties** dialog box depends on how you have your system set up. Screens examples use Windows 98.
- The way you get to the dialog boxes determines how long the printing options remain in effect:

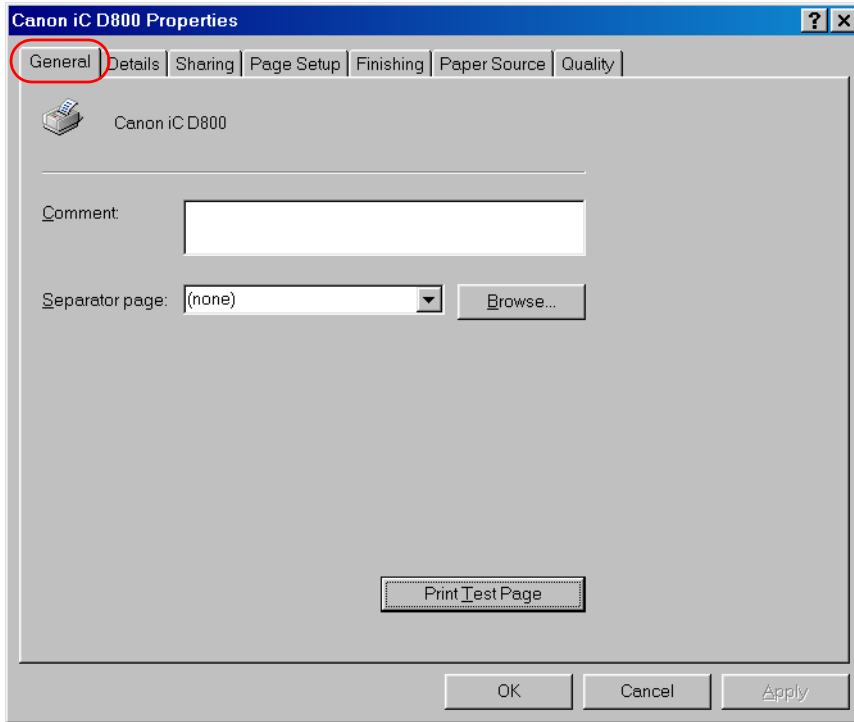
If you start from an application's **Print...** command, your choices apply only to that print job. They will not be stored when you close the application.

If you start from the **Printers** folder, the settings apply to all Windows applications and remain in effect until you change those settings.

- For more information about the following features, see the online Help. To display the online help, select the item you want more information about and press **F1**, or click **?** in the title bar and then select the item of interest.

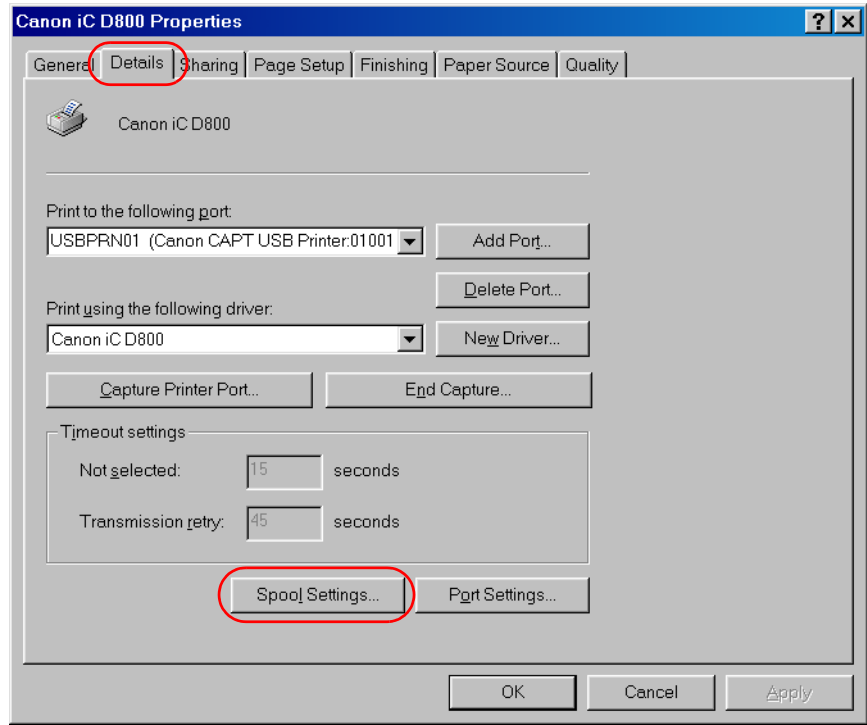
■ General Tab

Lets you print a test page or define separator pages. Refer to your Windows operating system documentation for more information.



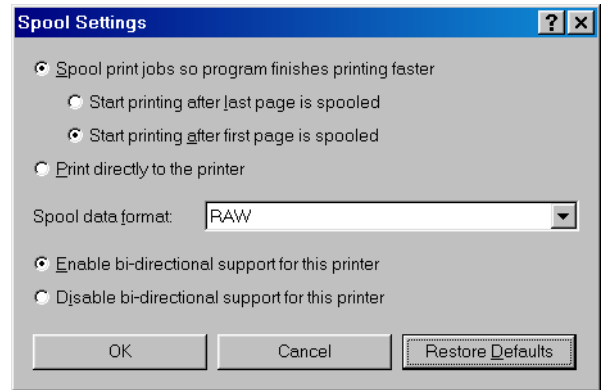
■ Details Tab

Specifies the printer port and time-out settings. Refer to your Windows operating system documentation for more information.



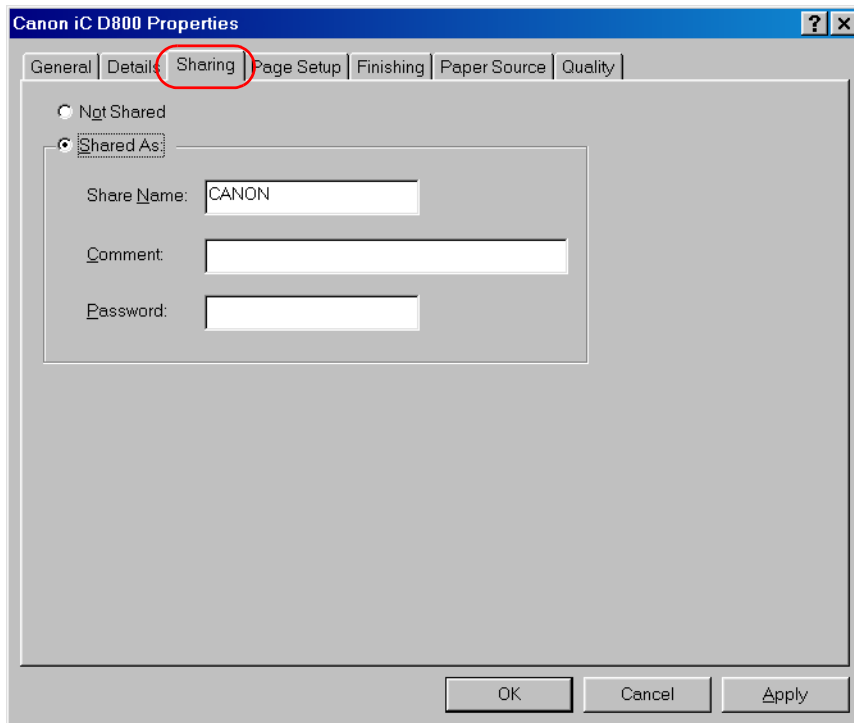
Spool Settings

The installer sets the following defaults:



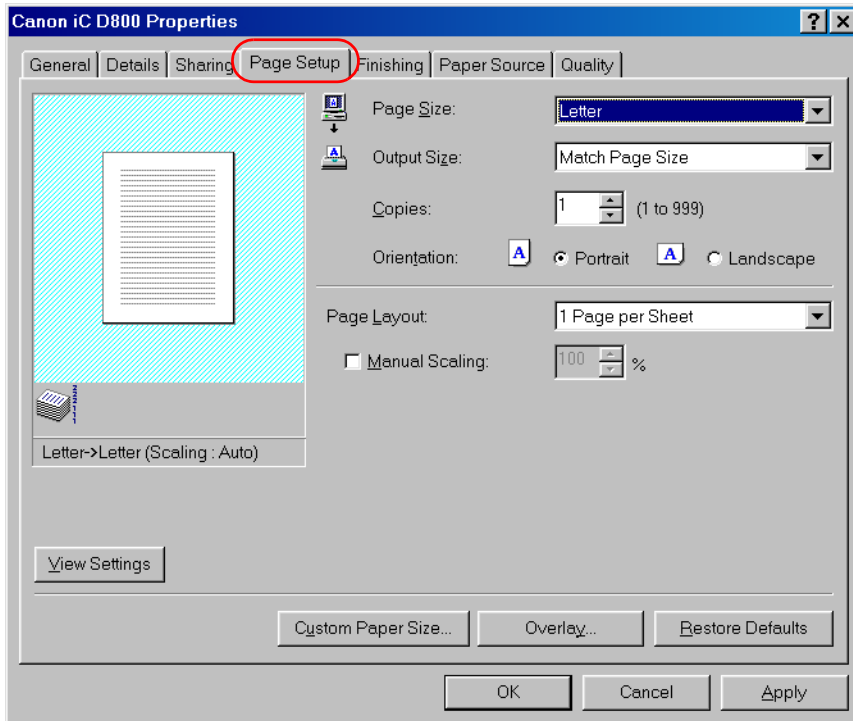
■ Sharing Tab

Specifies the printer-sharing settings. This tab is available only when file and printer sharing is enabled. Refer to your Windows operating system documentation for more information.



■ Page Setup Tab

Specifies paper size, scaling, number of copies, orientation, and pages per sheet.



Default settings depend on the country/region of purchase.

Page Size lets you select the paper size you are working with in your application (A3, B4, A4, B5, A5, Letter, Legal, Executive, Statement, DL, COM10, ISO-C5, Monarch, and three custom paper sizes. The names of the custom paper sizes are set with the **Custom Paper Size...** option).

Output Size lets you select the paper size to print on. If your output size is set to anything other than **Match Page Size**, the image will be automatically reduced or enlarged to fit on the page.

Copies lets you specify the number of copies to be printed (1 to 999).

Orientation lets you select the direction of printing relative to the paper (Portrait, Landscape).

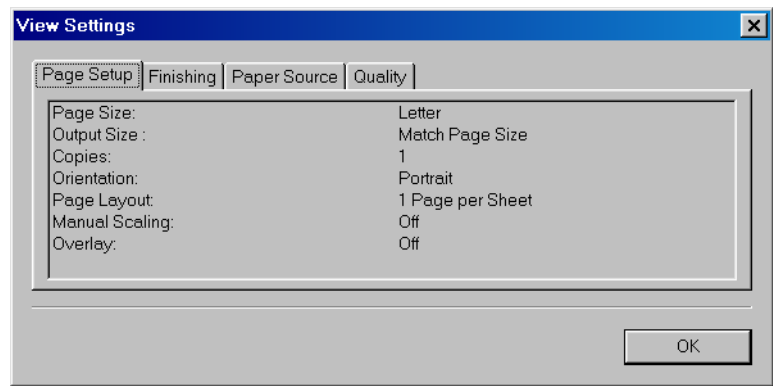
Page Layout lets you select the number of pages per sheet (1, 2, 4, 8, 9). If you select more than 1, the image may be reduced to fit on the selected output size. When 2, 4, 8, or 9 pages per sheet is selected **Manual Scaling** disappears and **Page Order** appears in its place.



Manual Scaling lets you shrink or enlarge images. This option only appears when **1 Page per Sheet** is selected as the **Page Layout**. Check on the check box to set a reduction or enlargement percentage (10 to 200).

View Settings

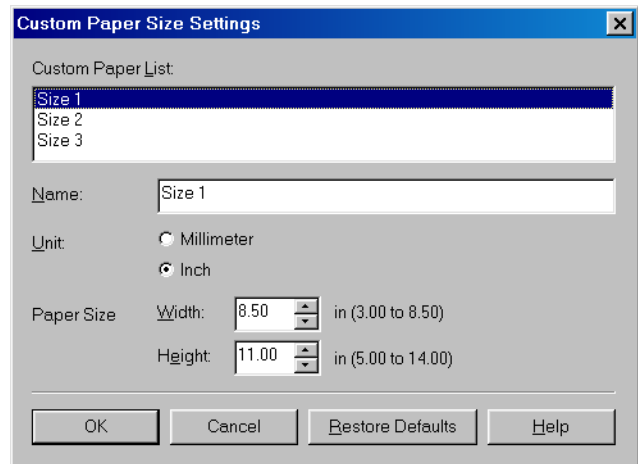
To get a quick view of your current settings, click **View Settings**, which is located on the **Page Setup**, **Finishing**, **Paper Source** and **Quality** tabs. Click on the tabs in the **View Settings** dialog box to view the settings for each tab.



Custom Paper Size Settings

Custom Paper Size... on the **Page Setup** tab window allows you to define custom paper sizes for quick selection. You can specify the name, width, and height of each size. You can have up to three custom sizes.

Be sure to designate values such that the height is equal to or greater than the width.



Default settings depend on the country/region of purchase.

Selecting a Custom Paper Size Setting

- 1 Select one of the predefined sizes from the **Custom Paper List**.
- 2 If you wish, enter a unique name in the **Name** area.
- 3 Select the **Unit** of measurement (**Millimeter** or **Inch**).
- 4 Define the **Paper Size** using the **Width** (3.00 to 8.50 inches (76.2 to 215.9 mm)) and **Height** (5.00 to 14.00 inches (127.0 to 355.6 mm)) settings.
- 5 Click **OK** to accept your changes.

If you wish to restore the default settings to *all* of the custom sizes, click **Restore Defaults**.

Overlay

Overlay Printing allows to overlay the document created in any Windows application onto a preselected form file.

For example, if there is a form file containing a company name, logo, or address, it will be printed in the same position on each page of the document altogether with the print data created in an application.

You can easily create perfectly formatted documents with the same appearance from any Windows application.

Overlay Form File Formats

For overlay forms you can use files in the following formats:

- Windows Metafile (WMF)
- Windows Bitmap (BMP)

Creating an Overlay Form File

Before using Overlay Printing, you need to create an overlay form file in an application. To create a form file you can use both applications from Windows 95/98/Me package and commercially available software.

- Windows Metafile (WMF)

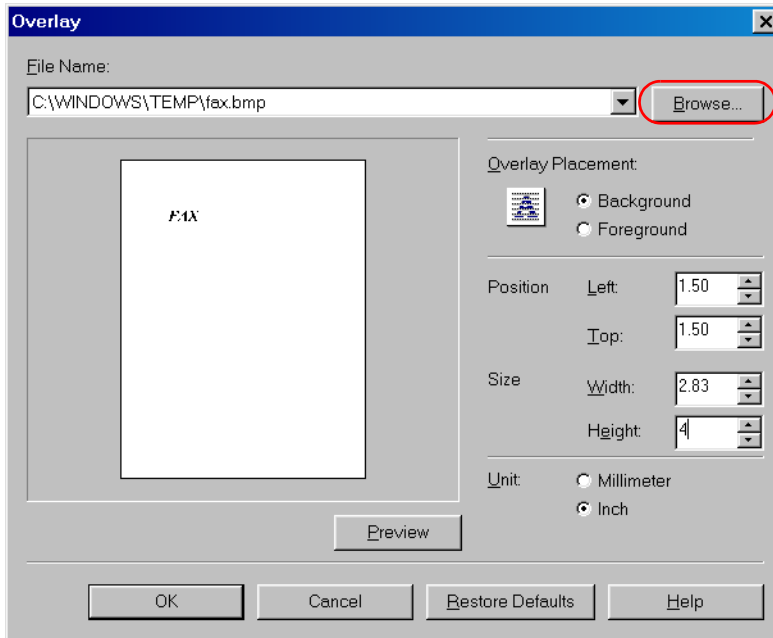
Windows metafile format is used in most commercially available draw applications. Create the form data and save it in the metafile format.

- Windows BMP Bitmap (BMP)

You can easily create a form file in this format using software included in the Windows 95/98/Me package, such as Paint. Windows 95/98/Me desktop wallpapers are also created in this format. There is also a number of commercially available software (e.g. Corel PhotoPaint) that use this format. Create the form data using such software and save it as a BMP file.

Setting Overlay

To make settings for overlay, printing click **Overlay...** on the **Page Setup** tab. The **Overlay** dialog box appears. Use **Browse...** to select the file that contains the overlay data.



Default settings depend on the country/region of purchase.

File Name sets the file name to use as the overlay form.

The **File Name** dropdown list stores up to nine file names beside the default (none) setting. You can use **Browse...** button to select the file that contains the overlay data.

Overlay Placement

- **Background**—Check this radio button on to place the overlay data in back of (beneath) the application data.
- **Foreground**—Check this radio button on to place the overlay data in front of (over) the application data.

Position Left/Top lets you specify the position of the overlay based on its distance from the paper's left and top edges. Select units of measurement using **Millimeter** or **Inch** radio button. Valid values interval for this setting is 0 to 16.5 inches (0 to 420 mm).

Size Width/Height lets you set the size of the overlay. Select units of measurement using **Millimeter** or **Inch** radio button. Valid values interval for this setting is 0 to 16.5 inches (0 to 420 mm).

Unit lets you set units of measurement using **Millimeter** or **Inch** radio button.

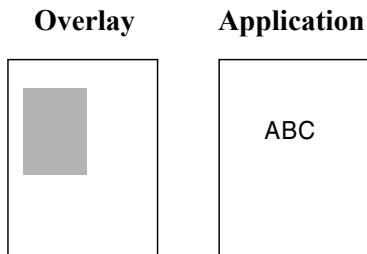
Restore Defaults resets **Left**, **Top**, **Width** and **Height** to their default values.

Confirm the settings and click **OK**. **Page Setup** dialog box appears again.

Overlay Placement

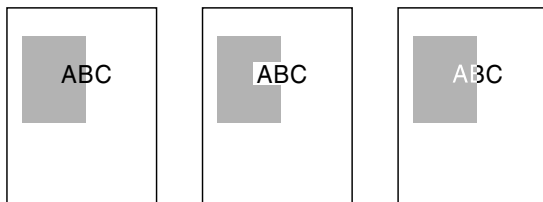
Print results may differ depending on the placement of the overlay and application print data (**Background/Foreground**). When the overlay and application print data overlap, print result may differ depending on the overlay file format and the application being used. Settings for overlay printing of your machine allow you to place overlay form in the foreground (in front) or in the background (in back) of the application print data.

Original data



[Overlay Placement: Background]

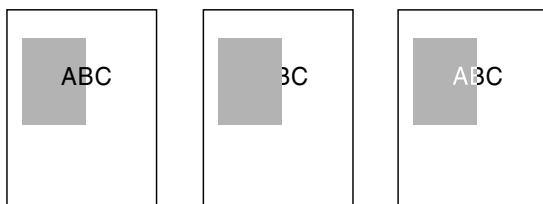
The result will appear as one of the shown below.



[Overlay Placement: Foreground]

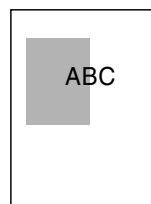
Using Windows Metafile

The result will appear as one of the shown below.



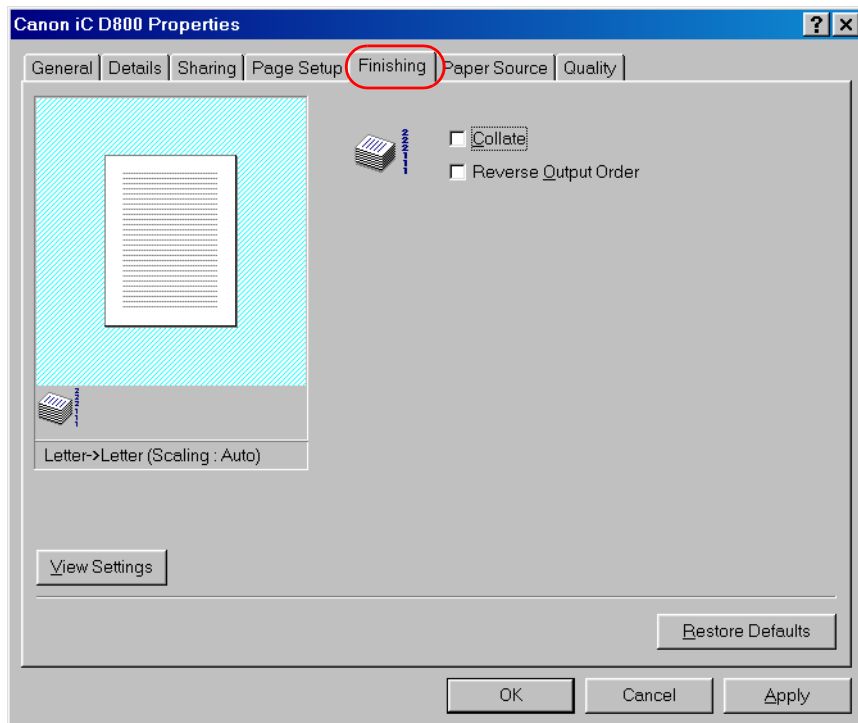
Using Windows BMP

The result will always be as shown below.



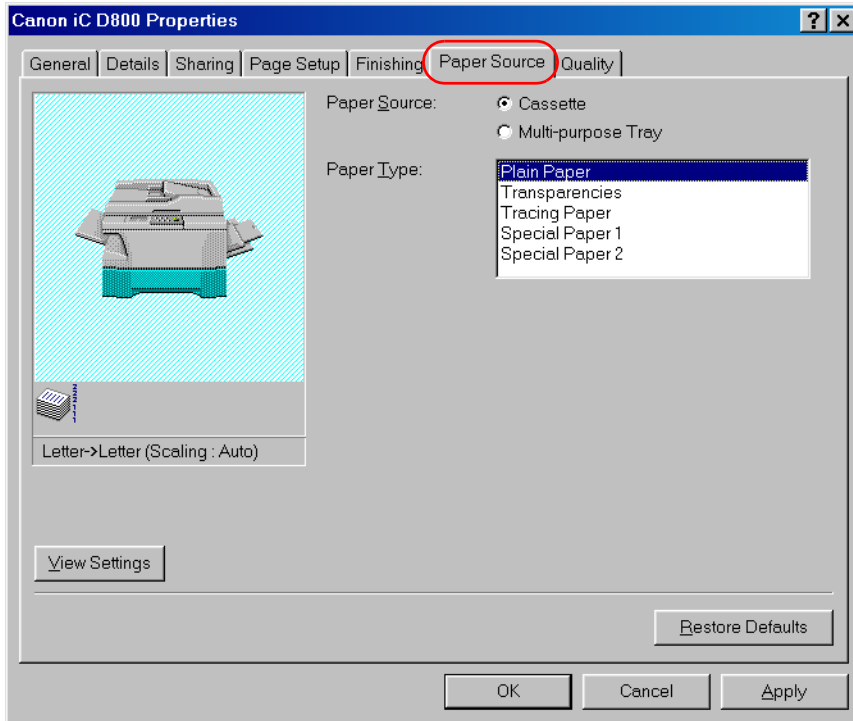
■ Finishing Tab

Specifies how final output is collated and printing pages in reverse output order. Check the check boxes to collate the document or print it in reverse output order.



■ Paper Source

Specifies the paper source and paper type settings.



Paper Source lets you specify paper feed method. Select from **Cassette** or **Multi-purpose Tray**.

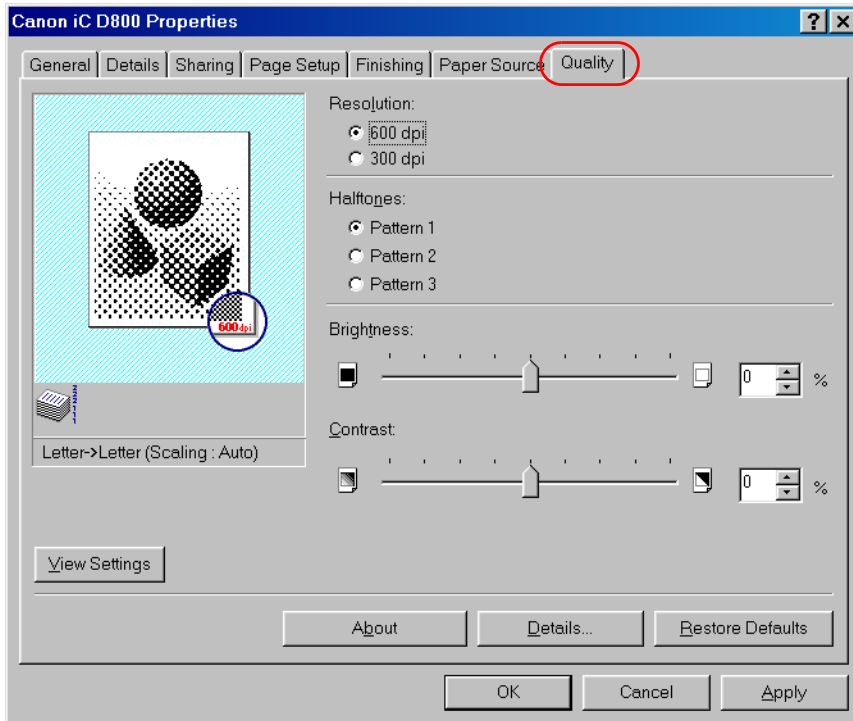
Paper Type lets you select from following types of paper:

- **Plain Paper** (including colored paper, recycled paper: 17 lb to 20 lb bond (64 to 80 g/m²))
- **Transparencies***
- **Tracing Paper*** (tracing paper, thin paper: 15 lb to 19 lb bond (52 to 63 g/m²))
- **Special Paper 1*** (thick paper: 21 lb to 32 lb bond (81 to 128 g/m²))
- **Special Paper 2*** (postcards, envelopes)

* When **Paper Source** is set to **Cassette**, please do not select paper types other than **Plain Paper**.

■ Quality Tab

Specifies the resolution, halftoning method, brightness, and contrast settings.

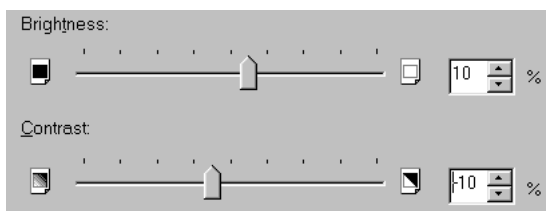


Resolution lets you specify the printer's resolution in dots per inch (600 dpi,300 dpi).

Halftones is the process of converting a greyscale image to black dots and white (unprinted) dots that simulate the grey shades in the original image. Different halftone patterns give different grey shade results.

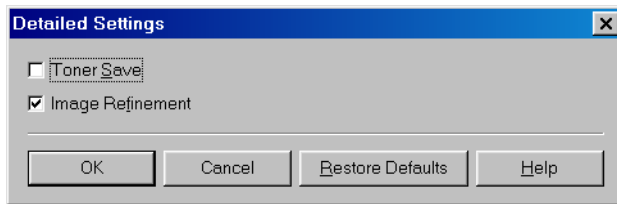
Brightness is the relative proportion of light and dark areas. Decreasing brightness darkens the overall image; increasing brightness lightens it. Brightness is expressed as a relative range from -80% to +80%.

Contrast is the degree of difference between the lightest and darkest areas of an image. Decreasing contrast lightens the dark areas and darkens the light areas; increasing it darkens the dark areas and lightens the light areas. Contrast is expressed as a relative range from -80% to +80%.



Detailed Settings

Details... accesses the settings for toner saver, and Image Refinement.



Toner Save thins the black areas of print data, so toner consumption is reduced.

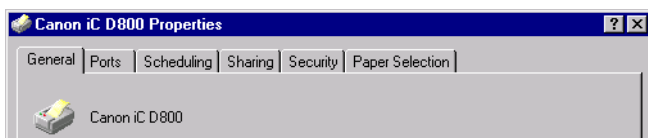
Image Refinement is a printer technology from Canon, with which the printer automatically senses and refines the jagged edges and ragged curves of characters and graphics.

Windows NT 4.0/2000/XP/Server 2003 Printer Properties and Default Document Properties

The CAPT driver for Windows NT 4.0/2000/XP/Server 2003 has two main dialog boxes: the **Printer Properties** dialog box and the **Default Document Properties*** dialog box.

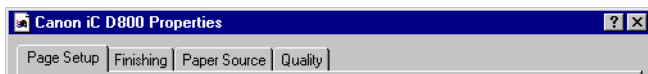
Printer Properties

To view the printer properties, select **Properties** from the **File** menu in the **Printers** (in Windows XP/Server 2003, **Printers and Faxes**) folder, or click the right mouse button on the **Canon iC D800** icon in the **Printers** (in Windows XP/Server 2003, **Printers and Faxes**) folder and select **Properties** from the pop-up menu.



Default Document Properties*

In the **Default Document Properties*** dialog box, you can specify the default settings for the printing options available when you print on the imageCLASS D800 series. To view the default document properties, select **Document Defaults...*** from the **File** menu in the **Printers** (in Windows XP/Server 2003, **Printers and Faxes**) folder, or click the right mouse button on the **Canon iC D800** icon in the **Printers** (in Windows XP/Server 2003, **Printers and Faxes**) folder, and select **Document Defaults...*** from the pop-up menu.



You can also open an equivalent dialog box and specify the setting by selecting **Print** or **Page Setup** from the **File** menu of an application.



NOTE

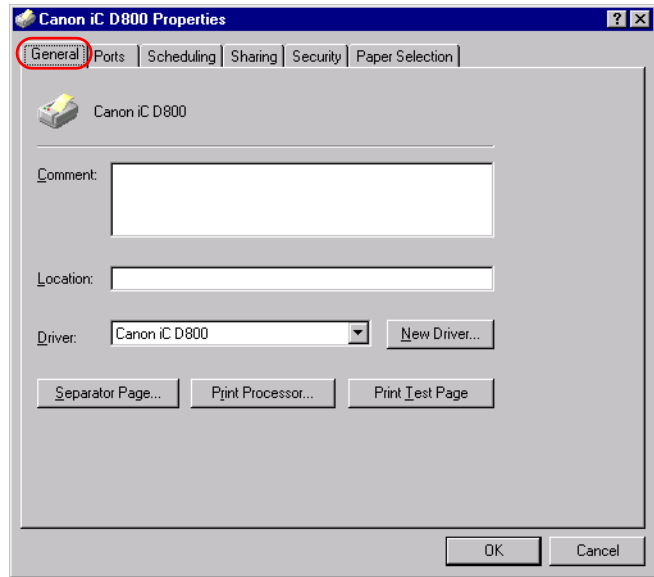
- The number of tabs displayed in the **Properties** dialog box depends on how you have your system set up. Screens examples use Windows NT 4.0.
- For more information about the following features, see the online Help. To display the online help, select the item you want more information about and press **F1**, or click **?** in the title bar and then select the item of interest.

* Printing Preference in Windows 2000/XP/Server 2003 (Windows NT 4.0 does not have this option.)

** Printing Preference... in Windows 2000/XP/Server 2003 (Windows NT 4.0 does not have this option.)

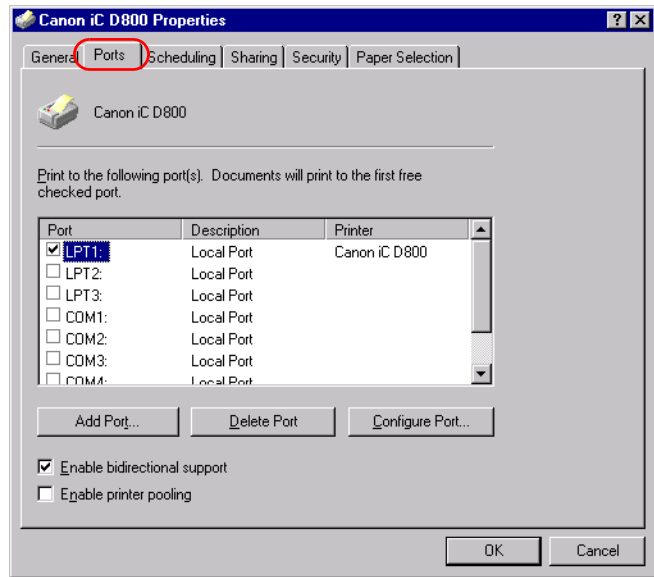
■ General Tab

Specifies to print a test page and separator pages. Refer to your Windows operating system documentation for more information.



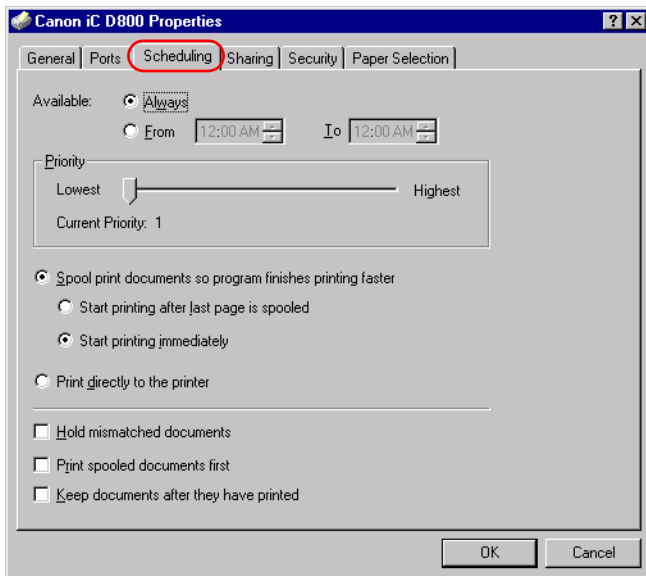
■ Ports Tab

Lets you specify the port to which the printer is attached. Refer to your Windows operating system documentation for more information.



■ Scheduling Tab

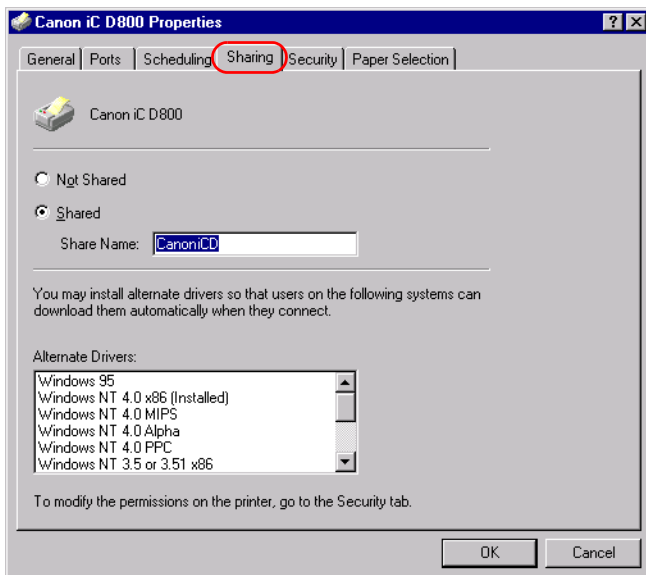
Lets you define print spooling settings. Refer to your Windows operating system documentation for more information.



Spool print documents so program finishes printing faster and **Start printing immediately** are set automatically when you install the printer driver.

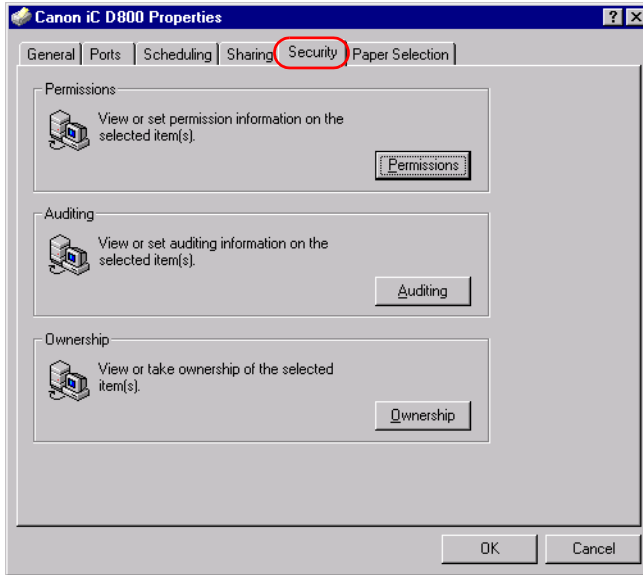
■ Sharing Tab

Specifies the printer-sharing settings. Refer to your Windows operating system documentation for more information.



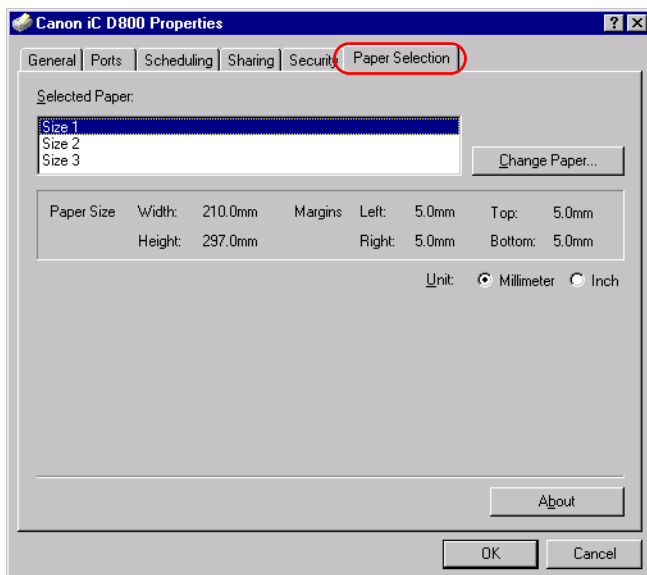
■ Security Tab

Lets you specify security settings. Refer to your operating system documentation for more information.



■ Paper Selection Tab

This printer driver supports three custom paper sizes. Using the custom forms defined on the **Forms** tab in the print server's **Properties** dialog box, you can add information about the custom paper sizes. Form definitions must conform to the printer's specifications.



Selected Paper dialog box gives you the ability to define up to three custom paper sizes (Size 1, 2, & 3). Select the size and click the **Change Paper...** button.

Change Paper opens the **Available Paper** dialog box. This dialog box contains the definition for the sizes you have defined in the **Print Server Properties** (refer to p. 3-21 for information on how to setup custom paper sizes). Only paper sizes that are supported by your printer will be available in this dialog box. Paper size can range in height from 5" to 14" (127mm to 355.6mm), width 3" to 8.5" (76.2mm to 215.9mm), and must have a minimum of 0.2" (5mm) margin on all sides. You can select either **Millimeter** or **Inch** to switch the unit of measurement displayed on the screen.

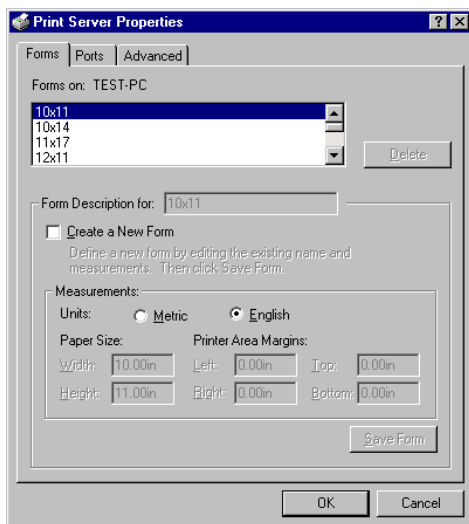
When you choose a size in the list and click **OK**, the size information is copied to the selected paper size you selected on the **Selected Paper** list in the **Paper Selection** tab.

Setting up custom paper sizes

The following procedure explains how to setup a custom paper size.

1 Click **Start** → **Settings** → **Printers** (on Windows XP/ Server 2003, **Printers and Fax**).

2 Open the **File** menu and select **Server Properties**.



3 Check the **Create a New Form** box on the **Form** tab in the **Print Server Properties** dialog box.

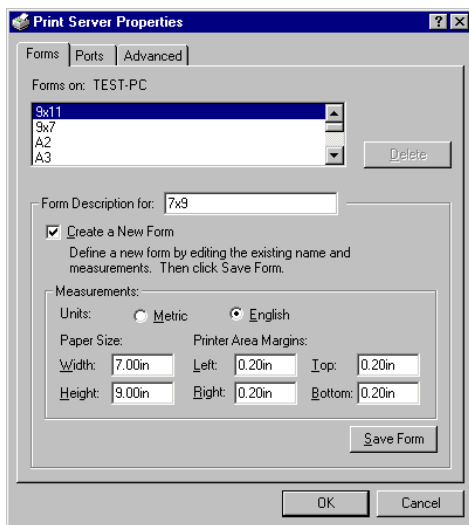
4 Type a name for your setup in the **Form Description for** box.

5 Select **Metric** or **English**.

6 Enter the values for **Width** 5" to 14" (127mm to 355.6mm), **Height** 3" to 8.5" (76.2mm to 215.9mm), and **Printer Area Margins** a minimum of 0.2" (5mm). Be sure to designate values such that the height is equal to or greater than the width.



7 Click Save Form.

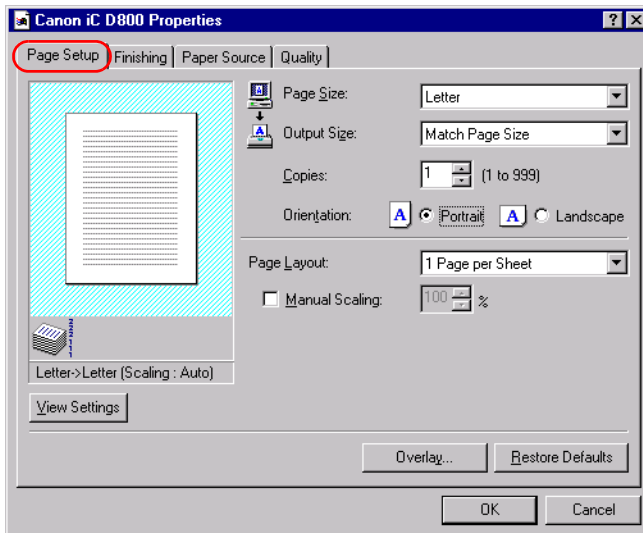


Be sure to enter all the values required in Step 6.

Repeat the Steps 3 to 7 to setup more custom paper sizes.

■ Page Setup Tab

Specifies paper size, scaling, number of copies, orientation, and pages per sheet.



Default settings depend on the country/region of purchase.

Page Size lets you select the paper size you are working with in your application (A3, B4(JIS), A4, B5(JIS), A5, Letter, Legal, Executive, Statement, Envelope DL, Envelope #10, Envelope C5, Envelope Monarch, and three custom paper sizes).

Output Size lets you select the paper size to print on. If your output size is set to anything other than **Match Page Size**, the image will be automatically reduced or enlarged to fit on the page.

Copies lets you specify the number of copies to be printed (1 to 999).

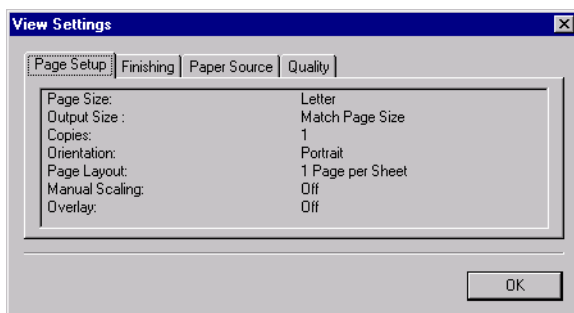
Orientation lets you select the direction of printing relative to the printer's paper (Portrait, Landscape).

Page Layout lets you select the number of pages per sheet (1, 2, 4, 8, 9). If you select more than 1, the image may be reduced to fit on the selected output size. When 2, 4, 8, or 9 pages per sheet is selected **Manual Scaling** disappears and **Page Order** appears in its place.

Manual Scaling lets you shrink or enlarge images. This option only appears when **1 Page per Sheet** is selected as the **Page Layout**. Check the check box to set a reduction or enlargement percentage (10 to 200).

View Settings

To get a quick view of your current settings, click **View Settings**, which is located on the **Page Setup**, **Finishing**, **Paper Source** and **Quality** tabs. Click on the tabs in the **View Settings** dialog box to view the settings for each tab.



Overlay

Overlay Printing allows to overlay the document created in any Windows application onto a preselected form file.

For example, if there is a form file containing a company name, logo, or address, it will be printed in the same position on each page of the document altogether with the print data created in an application.

You can easily create perfectly formatted documents with the same appearance from any Windows application.

Overlay Form File Formats

For overlay forms you can use files in the following formats:

- Windows Metafile (WMF)
- Windows Bitmap (BMP)

Creating an Overlay Form File

Before using Overlay Printing, you need to create an overlay form file in an application. To create a form file you can use both applications from Windows NT 4.0/2000/XP/Server 2003 package and commercially available software.

- Windows Metafile (WMF)

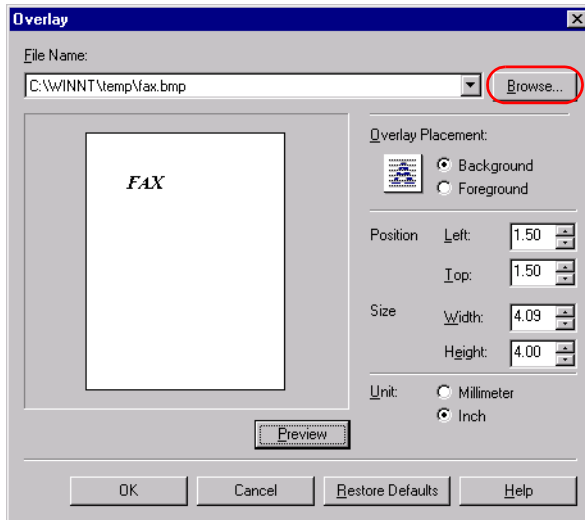
Windows metafile format is used in most commercially available draw applications. Create the form data and save it in the metafile format.

- Windows BMP Bitmap (BMP)

You can easily create a form file in this format using software included in the Windows NT 4.0/2000/XP/Server 2003 package, such as Paint. Windows NT 4.0/2000/XP/Server 2003 desktop wallpapers are also created in this format. There is also a number of commercially available software (e.g. Corel PhotoPaint) that use this format. Create the form data using such software and save it as a BMP file.

Setting Overlay

To make settings for overlay printing click **Overlay...** on the **Page Setup** tab. The **Overlay** dialog box appears. Use **Browse...** to select the file that contains the overlay data.



Default settings depend on the country/region of purchase.

File Name sets the file name to use as the overlay form.

File Name dropdown list stores up to nine file names beside the default (none) setting. You can use **Browse...** button to select the file that contains the overlay data.

Overlay Placement

- **Background**—Check this radio button on to place the overlay data in back of (beneath) the application data.
- **Foreground**—Check this radio button on to place the overlay data in front of (over) the application data.

Position Left/Top lets you specify the position of the overlay based on its distance from the paper's left and top edges. Select units of measurement using **Millimeter** or **Inch** radio button. Valid values interval for this setting is 0 to 16 inches (0 to 420 mm).

Size Width/Height lets you set the size of the overlay. Select units of measurement using **Millimeter** or **Inch** radio button. Valid values interval for this setting is 0 to 16 inches (0 to 420 mm).

Unit lets you set units of measurement using **Millimeter** or **Inch** radio button.

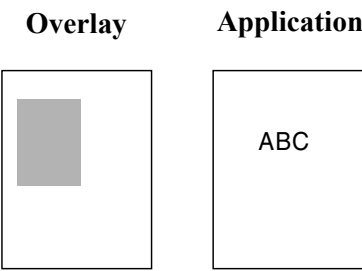
Restore Defaults resets **Left**, **Top**, **Width** and **Height** to their default values.

Confirm the settings and click **OK**. **Page Setup** dialog box appears again.

Overlay Placement

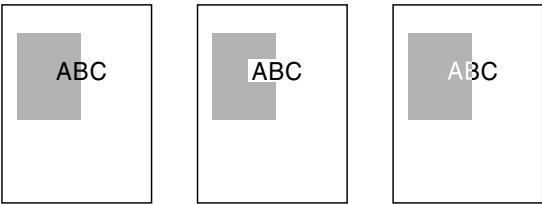
Print results may differ depending on the placement of the overlay and application print data (**Background/Foreground**). When the overlay and application print data overlap, print result may differ depending on the overlay file format and the application being used. Settings for overlay printing of your machine allow you to place overlay form in the foreground (in front) or in the background (in back) of the application print data.

Original data



[Overlay Placement: Background]

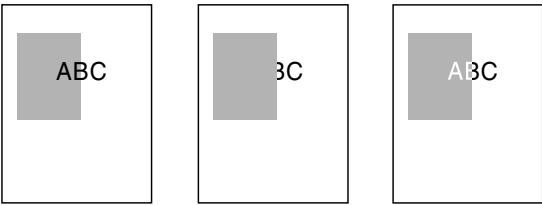
The result will appear as one of the shown below.



[Overlay Placement: Foreground]

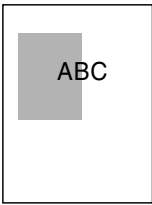
Using Windows Metafile

The result will appear as one of the shown below.



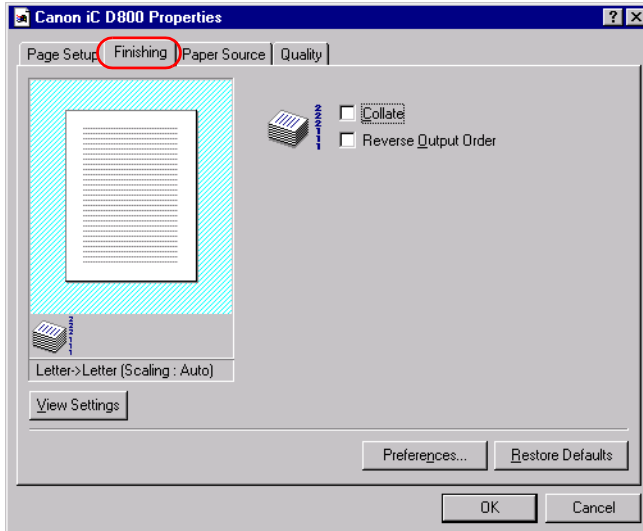
Using Windows BMP

The result will always be as shown below.



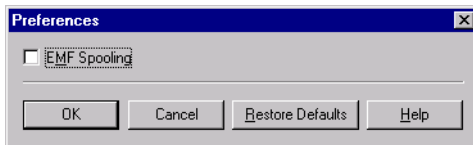
■ Finishing Tab

Specifies how final output is collated and sets printing pages in reverse output order. Check the check boxes to collate the document or print it in reverse output order.



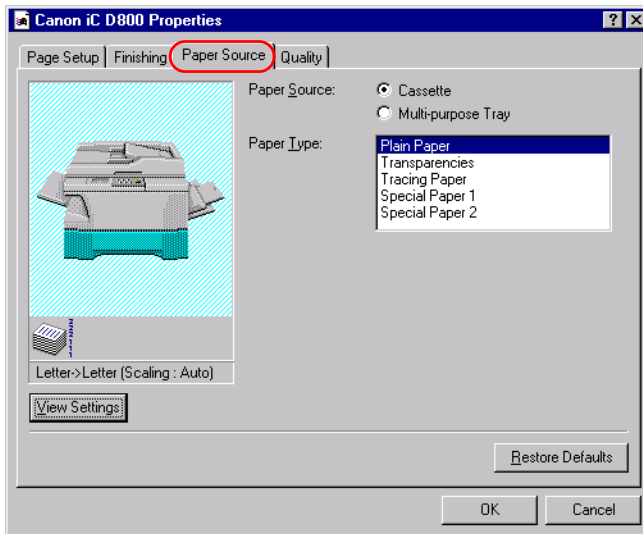
Preferences

Preferences... on the **Finishing** tab window opens the **Preferences** dialog box. The check box lets you turn EMF Spooling on. If this is not checked, EMF Spooling will be off. This setting is unchecked by default.



■ Paper Source Tab

Specifies the paper source and paper type settings.



Paper Source lets you specify paper feed method. Select from **Cassette** or **Multi-purpose Tray**.

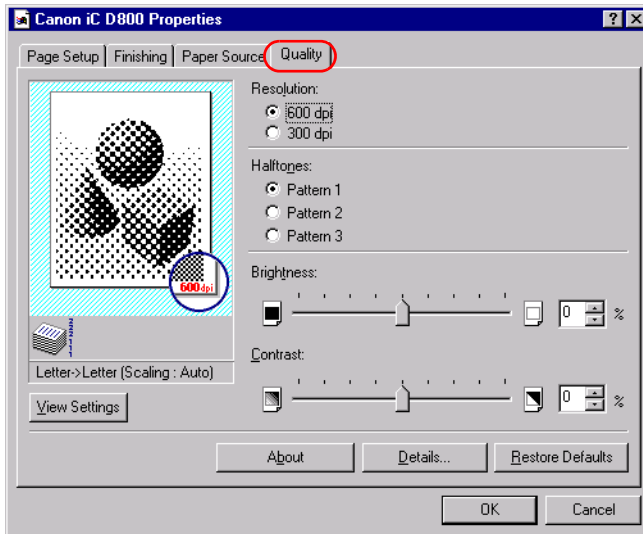
Paper Type lets you select from following types of paper:

- **Plain Paper** (including colored paper, recycled paper: 17 lb to 20 lb bond (64 to 80 g/m²))
- **Transparencies***
- **Tracing Paper*** (tracing paper, thin paper: 15 lb to 19 lb bond (52 to 63 g/m²))
- **Special Paper 1*** (thick paper: 21 lb to 32 lb bond (81 to 128 g/m²))
- **Special Paper 2*** (postcards, envelopes)

* When **Paper Source** is set to **Cassette**, please do not select paper types other than **Plain Paper**.

■ Quality Tab

Specifies the resolution, halftoning method, brightness, and contrast settings.

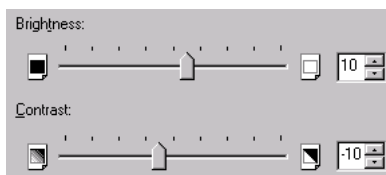


Resolution lets you specify the printer's resolution in dots per inch (600 dpi, 300 dpi).

Halftones is the process of converting a greyscale image to black dots and white (unprinted) dots that simulate the grey shades in the original image. Different halftone patterns give different grey shade results.

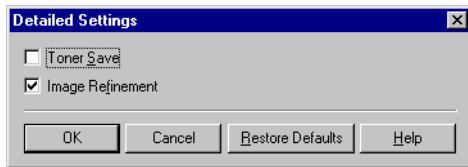
Brightness is the relative proportion of light and dark areas. Decreasing brightness darkens the overall image; increasing brightness lightens it. Brightness is expressed as a relative range from -80% to +80%.

Contrast is the degree of difference between the lightest and darkest areas of an image. Decreasing contrast lightens the dark areas and darkens the light areas; increasing it darkens the dark areas and lightens the light areas. Contrast is expressed as a relative range from -80% to +80%.



Detailed Settings

Details... accesses the settings for toner saver and Image Refinement.



Toner Save thins the black areas of print data, so toner consumption is reduced.

Image Refinement is a printer technology from Canon, with which the printer automatically senses and refines the jagged edges and ragged curves of characters and graphics.

Chapter 4

Checking the Status of a Print Job

This chapter describes how to check the status of print jobs.

You can track and control your print jobs using either of the following methods:

- The **Canon iC D800** Status Window
Tells you exactly what is happening with the current print job.
- The Windows **Printers** (in Windows XP/Server 2003, **Printers and Faxes**) folder
Helps you control and manage all print jobs in a queue for all printers installed in Windows.

Opening the Status Window

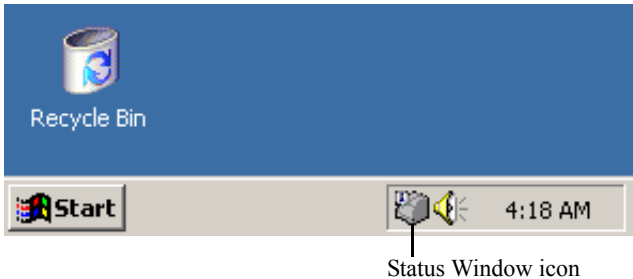
The **Canon iC D800** Status Window opens automatically in the following situations:

- When you print a document, provided “**While Printing**” is selected for “**Display Printer Status Window**” the **Option Settings** dialog box of the Status Window.
- When an error occurs or user action is required.
- When Windows starts, if the Status Window was open the last time Windows was closed.

You can also open the **Printer Status Window** by clicking the **Status Window** icon in the Windows Taskbar, and selecting **Canon iC D800**. If the icon is not displayed in the taskbar, click **Start** and select **Program → Canon iC D800 → Canon iC D800 Status Window**, then the icon will be displayed in the taskbar.

The **Printer Status Window** appears every time you attempt to print.

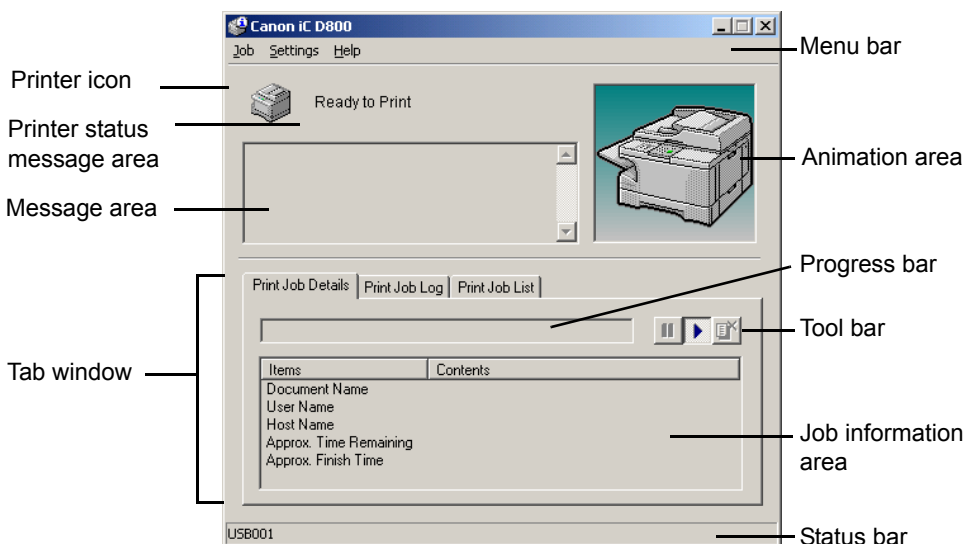
If you would like to hide the **Printer Status Window**, right click the **Status Window** icon in the Windows Taskbar, and select **Exit all printers' Printer Status Windows**.



If multiple imageCLASS D800 series machines are connected, select a printer from the list. The Status Window opens and displays information for the selected printer.

Using Canon iC D800 Status Window

The Status Window is a program used to display the status of jobs and perform printer operations.

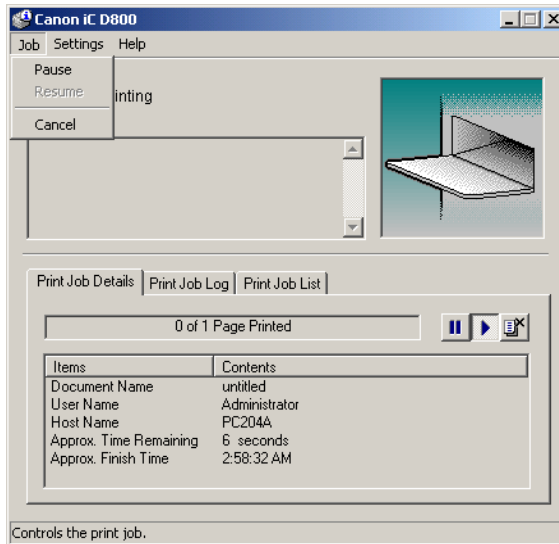


| Window area | Description |
|-----------------------------|------------------------------------------------------------------------------------------------------------------------------------------------------------------------------------------------|
| Menu bar | Contains menu options to control the Status Window and the printer. |
| Printer icon | Displays the current printing status and error conditions. |
| Printer status message area | Displays the current status of the printer. |
| Error message area | Gives a description of situations requiring action. |
| Animation area | Shows an animated graphic indicating the current printer status. The graphic background changes from blue (normal) to orange when user action is required, or to red when a warning is issued. |
| Progress bar | Indicates the progress of the current job. |
| Tool bar | Use to pause, delete, or resume printing. |
| Job information area | Displays information related to print jobs. The type of information displayed changes with the selected tab. |
| Status bar | Displays the name of the printer port and describes menu options as you move your mouse over them. |

■ Using the Menu Bar

Job Menu

You can select the **Job** menu from the menu bar of the **Canon iC D800** Status Window:

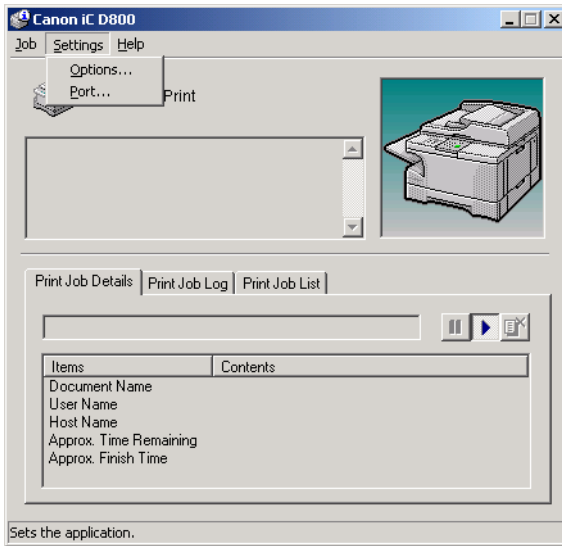


The **Job** menu includes the following options:

- **Pause** temporarily halts printing of the current document. After the current page completes printing, the printer pauses until you select Resume.
- **Resume** resumes printing with the next page of the document you paused.
- **Cancel** cancels printing of the document currently being printed.

Settings Menu

You can select the **Settings** menu from the menu bar of the **Canon iC D800** Status Window:

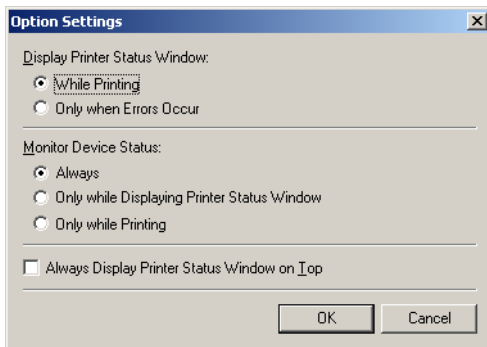


The **Settings** menu includes the following selections:

- **Options...** opens the **Option Settings** dialog box that lets you change the settings for the Status Window.
- **Port...** opens the **Port Setting** dialog box when the printer is connected to a local parallel port. This setting is unavailable if the printer is not connected to a local parallel port, or while printing is in progress.

Option Settings

This dialog box lets you define when and how you want the **Canon iC D800** Status Window to display.



- **Display Printer Status Window** lets you select when the Status Window displays.
 - **While printing**—The Status Window opens automatically each time you print.
 - **Only when Errors Occur**—The Status Window opens only when an error occurs.

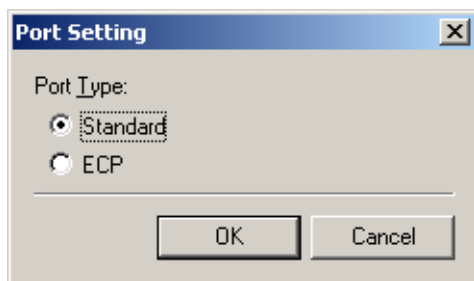
To manually open the Status Window, click the Status Window icon in the Windows taskbar, and then click the **Canon iC D800**.

You can change display options even as a document prints, but the changed settings do not take effect until the next print job.

- **Monitor Device Status** lets you select when the Status Window is active.
 - **Always**—Status Window is continually monitoring the printer.
 - **Only while Displaying Printer Status Window**—Status Window is monitoring the printer only when Printer Status Window is displayed.
 - **Only while Printing**—Status Window is monitoring the printer only when printing a job.
- **Always Display Printer Status Window on Top** places the Status Window on top of all windows on the desktop.

Port Setting

This dialog box lets you define how your computer communicates with your printer using the parallel port. The type of port you have depends on your computer.

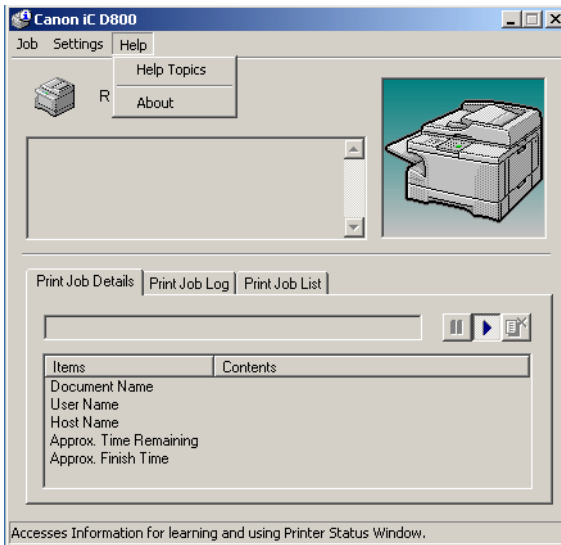


- **Standard** uses the parallel port as a standard parallel port.
- **ECP** uses the parallel port as an ECP (Enhanced Capabilities Port) parallel port.

Before you make any changes, check the manual that came with your computer to determine what type of port you have.

■ Using the Help Menu

You can select the **Help** menu from the menu bar of the **Canon iC D800** Status Window:



- **Help Topics** displays the search window for help topics.
- **About** displays the Status Window version information.

■ Using the Toolbar

The toolbar has three buttons that you can use to pause, resume, or delete the current print job.



Pause: Temporarily halts printing the current document. The current page finishes printing.



Resume: Continues printing after a pause. Printing restarts with the next page of the document you paused.



Cancel: Cancels the current print job. If you are printing several documents, CAPT continues to the next print job in the queue and displays the status of that print job. To cancel all print jobs in the queue simultaneously, choose Settings from the **Start** menu, then select the **Printers** folder (in Windows XP/Server 2003, select **Printers and Faxes** from **Start** menu); Double-click the **Canon iC D800** icon to display the **Canon iC D800** dialog box. Select all of the jobs and delete them.

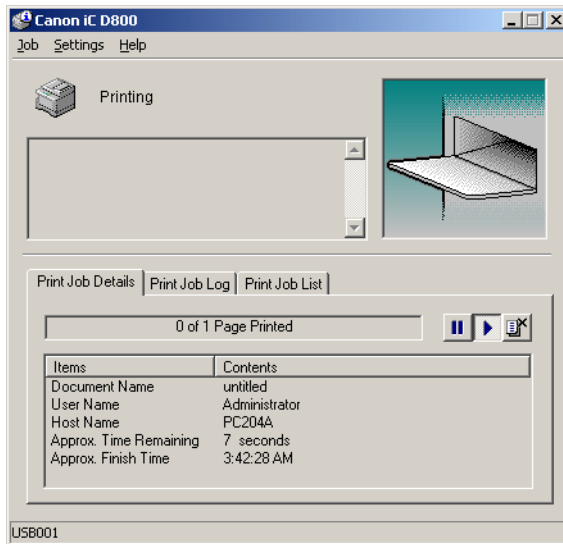


NOTE

When the **Print Job List** tab is selected, none of the buttons are displayed.

■ Using the Tab Window

Print Job Details

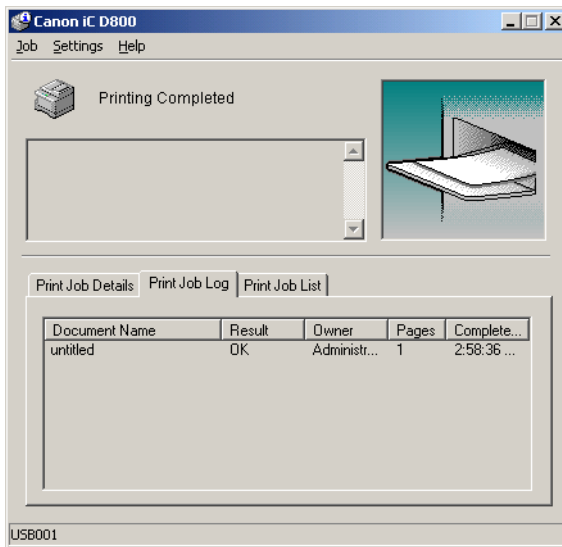


This tab shows information related to the job that is currently being printed. The following types of information are displayed:

- Document Name
- User Name
- Host Name
- Approx. Time Remaining
- Approx. Finish Time

Some of this information may not be displayed, depending on the printer status.

Print Job Log

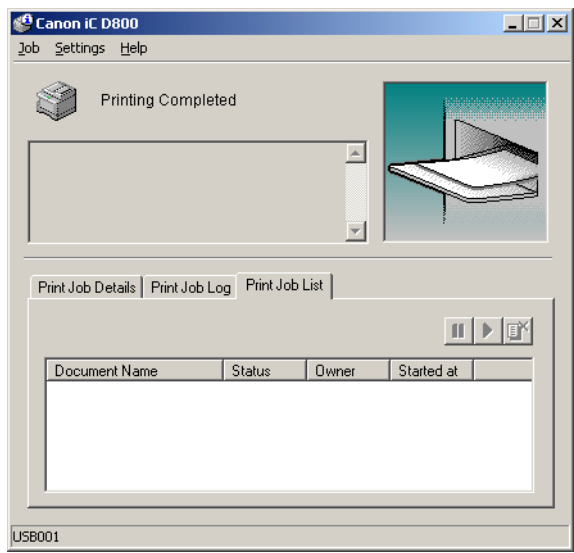


This tab shows information related to jobs that are completed. The following types of information are displayed:

- Document Name
- Result
- Owner
- Pages
- Complete Time

The job history displayed in the job information area can list a history of up to the most recent 100 jobs. The job logs list clears whenever you terminate the Status Window.

Print Job List



This tab shows information related to the jobs that have not yet started.

- Document Name
- Status
- Owner
- Started at

Network Printer Status

Viewing the print status

The status of a network printer can be viewed on the print server as well as the client.

For job status to be displayed in the client's Status Window, the print server's Status Window must be running.

If the status option “**While Printing**” has been selected for “**Display Printer Status Window**” in the **Option Settings** dialog box of the Status Window on the client, the client's Status Window opens automatically once printing from the server starts.

If an error occurs on the server, the client's Status Window for that job opens automatically.

If the client's Status Window opens automatically, it closes automatically when printing completes or the error is cancelled, unless the user interacted with the window or its menus.

Performing print job operations

Print job operations (pause, resume, cancel) may be performed from either the print server or the client for the job. After a client performs a print operation, no other operations are allowed until the server confirms that the operation has been accepted.

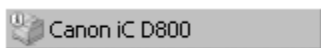
Print job operations cannot be selected on any other screen except the print server or client for the job.

If the print server's Status Window is not running, you cannot perform job operations on the client. The client's Status Window displays the message “**Check Print Server.**”

The Status Window Icon

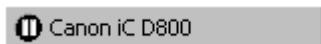
If you minimize the Status Window, the icon on the taskbar inform you the printer status. When you click this taskbar button, the Status Window opens and the icon appears in the Status Window. Types of the Status Window icons and taskbar icons are listed below.

Printer Ready



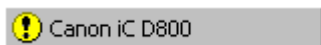
Indicates that the printer is ready to print.

Printing Paused



Indicates that printing has paused.

Attention Required



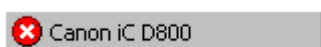
When the Status Window displays an alert, the window automatically opens to its full size. You can minimize the window again, but you will not be able to resume printing until you take the action specified in the full-size window.

Warning



An error has occurred and the printer may require service. You may have to contact your local authorized Canon service representative.

Abnormal Condition



Something is wrong with the printer or one of its connections. You will not be able to print until the problem is fixed.

Closing the Status Window

Click the close button to close the window, just as you would close any other window.

If the Status Window opens automatically due to printing, or due to an error, the window automatically closes when printing completes or the error status clears.

Messages

CAPT gives you information about your print job and the printer itself.

Chapter 5

Troubleshooting

This chapter includes information to help you solve printer problems. A problem might have one or a combination of causes, such as a computer malfunction, software errors, printer cable or other printer problems. Many printing problems are related to how your software interacts with the printer.

If you can print a self test but the printer does not print other jobs, or your printed output is not what you expected, the problem is with your computer, software, or cables.

If your printer is not operating properly, try the suggestions in this chapter in the order listed.

Finding Information

| Problem | See page |
|---------------------------|----------|
| Printer Problems | 5-2 |
| CAPT Problems | 5-4 |
| CAPT Messages | 5-6 |
| Using the Trouble Shooter | 5-8 |
| Uninstalling CAPT | 5-10 |

If you have a problem with your printer and you cannot resolve it by referring to the information in this chapter, please refer to the *Basic Guide*.

Printer Problems

| Problem | Cause | Solution |
|------------------------|---------------------------------------------------------------------------------------------------------------|-----------------------------------------------------------------------------------------------------------------------|
| Printer does not print | Paper might not be loaded. | Make sure that paper is loaded. |
| | A copy job might not have been completed due to the Out of Paper status. | The print job will start automatically when the copy job is completed. Please, load paper. |
| | Print jobs might be stalled. | Check the Canon iC D800 Status Window for stalled jobs. |
| | The cartridge might not be installed correctly. | Check that the cartridge is installed correctly. → <i>Set-up Instructions</i> |
| | Your BIOS port setting might need to be modified. | See your computer's documentation concerning available ports. |
| | The parallel cable might not be compatible. | Make sure that you are using an 8-bit, Centronics-compatible, parallel interface cable with bidirectional capability. |
| No power is supplied | Your computer might not be working properly. | Check your computer, make sure that it is turned on and working properly. |
| | Power cord might not be plugged in. | Make sure that the power cord is securely plugged into both the machine and the AC outlet. |
| | AC outlet might not be supplying power. | Make sure that the AC outlet is supplying power; try another outlet if necessary. |
| Printer stops printing | AC voltage might not match printer. | Make sure that the voltage of the AC outlet matches the ratings on the printer. |
| | Your interface cable might be loose. | Check your computer and your cable. |
| | You might be working on an application in the foreground, in which case printing performance might slow down. | Printer performance improves if you give your print job priority. |

| Problem | Cause | Solution |
|--------------------------------------|------------------------------------------------------------------------------------------------------------------------------------------------------|--------------------------------------------------------------------------------------------------------------------------------------------------------------------------------------------------------------------------------------------------------------------------------------------------------------------------------------------------------------------------------------------------------------------|
| Printout is wrong | There might be a communications problem between the printer and your computer. | <p>Make sure that your cable connections are secure.</p> <p>Make sure that your parallel interface cable is less than 9.9 feet (3.0 m) or USB interface cable is less than 16.5 feet (5.0 m) long.</p> <p>Make sure that you are not using a switch box.</p> <p>Check that you have selected the correct printer driver in Windows.</p> |
| | The wrong printer is selected in the Printers folder. | Make sure that the Canon iC D800 is selected in the Printers (in Windows XP/ Server 2003, Printers and Faxes) folder. |
| | You might need to modify your BIOS setup. | See your computer's documentation for details. Try changing the parallel port mode or the parallel port address to see if this solves the problem. |
| Printer locks up system | Your system setup might be a problem. | <p>Verify that you have a high-quality shielded interface cable.</p> <p>The problem might be your BIOS. Verify that your BIOS setup is correct. (See your computer's documentation for details.)</p> <p>Verify that your physical memory is working correctly.</p> <p>If you have a Toshiba laptop, change this line in your CONFIG.SYS file:</p> <pre>c:\winutils\mxtime.exe to: REM c:\winutils\mxtime.exe</pre> |
| Computer indicates a device time-out | Your computer is sending data to the printer but the printer is not responding. The printer might be off, offline, or not connected to the computer. | <p>Make sure that the printer is not paused.</p> <p>Check that the printer's interface cable is securely connected to both the printer and the computer.</p> <p>Make sure that paper is properly loaded in the paper tray.</p> <p>Reset the printer and computer.</p> <p>Try the print operation again.</p> <p>Try a different cable.</p> |

CAPT Problems

| Problem | Cause | Solution |
|-------------------------------------------------------------|---------------------------------------------------------------------------------------------------------------|-------------------------------------------------------------------------------------------------------------------------------------------------------------------------------------------------------------------------------------------------------------------------------------------|
| CAPT is not working properly | The CAPT (Canon iC D800) driver is not selected as the default printer driver for the imageCLASS D800 series. | Specify the CAPT (Canon iC D800) driver as the default driver for the imageCLASS D800 series. |
| | The software might not be installed properly. | Refer to “Using the Trouble Shooter” on p. 5-8. To check if CAPT is installed correctly, try printing a page from an application. If the print fails, CAPT is not installed correctly. Remove CAPT and install it again. For more information, see “Uninstalling CAPT” on p. 5-10. |
| Cannot use Adobe Type Manager (ATM) fonts | | Adobe Type Manager (ATM) is not supported. |
| Cannot print with a printer driver other than Canon iC D800 | The printer driver is connected to the same port as the Canon iC D800 printer driver. | Connect the printer driver to a port different from the Canon iC D800 printer driver. |
| CD-ROM Menu doesn't appear automatically | Autorun CD-ROM Menu checkbox is unchecked in the CD-ROM menu. | Start the CD-ROM menu manually, and check the “ Autorun CD-ROM Menu ” checkbox. |
| | The “ Auto insert notification ” checkbox is unchecked. | From the Device Manager make sure that the “ Auto insert notification ” checkbox is checked in the CD-ROM drive Properties dialog box. For more information, see Windows Help. |

| Problem | Cause | Solution |
|------------------------------------------------------------------------------|-------------------------------------------------|-----------------------------------------------------------------------------------------------------------------------------------------------------------------------------------------------------------------------------------------------------------------------------------------------------------------------------------------------------------------------------------------------------------------------------------------------------------------------------------------------------------------------------------------------------------------------------------------------------------------------------------------------------------------------------------------------------------------------------------------------------------------------------------------------------------------------------------------------------------------------------------------------------------------------------------------------------------------------------------------------------------------------------------------------------------------------------------------------------------------------------------------------------------------------------------------------------------------------------------------------------------------------------------------------------------------------------------------------------------------------------------------------------------------------------------------------------------------------------------------------------|
| “File not found on CD-ROM” error when starting the CD-ROM Menu. | The program is loaded from the hard disk drive. | Remove the CDMENU.EXE file from your hard disk drive and restart the CD-ROM Menu program from the compact disc labeled “User Software”. |
| Cannot install CAPT using a USB port. (Windows 98/Me/2000/XP/Server 2003) | A USB class driver is not properly installed. | <p>Perform the following steps.</p> <ol style="list-style-type: none"> 1) Make sure the printer is connected to your computer using a USB cable and the printer is turned on. 2) Open the System dialog box in the Control Panel (In Windows XP*, click Performance and Maintenance in the Control Panel Performance and Maintenance folder appears. Click See basic information about your computer. System Properties dialog box appears). 3) Select [Device Manager] tab and double click [Universal Serial Bus Controllers]. For Windows 2000/XP/Server 2003, select [Hardware] tab and click [Device Manager] button. 4) Delete ONLY the following USB class drivers under [Universal Serial Bus Controller]; For Windows 98, select [Canon iC D800], For Windows Me, [Canon CAPT USB Printer], and click [Delete] button. For Windows 2000/XP/Server 2003, select [USB Printing Support] or [Canon CAPT USB Printer], and uninstall from the [Active] menu. In case the USB class driver is displayed under [Other devices], select and delete ONLY one the following, depending on the OS you are using; [Canon iC D800], [Canon CAPT USB Printer], or [Unknown]. 5) Close the Control Panel and unplug the USB cable. 6) Restart Windows 98/Me/2000/XP/Server 2003. |

* The procedure for Windows XP is given for Category View Mode.



Never delete other devices or device drivers. Windows may not operate properly.

CAPT Messages

CAPT displays the status of your printing environment and current print job in the Status Window.

Alerts

Alerts identify problems that must be corrected before printing can continue. Sometimes messages inform you to do something, such as clear jammed paper. In other cases, alerts tell you what is wrong and how to fix it.

| Message | Action |
|----------------------------------------|----------------------------------------------------------------------------------------------------------------------------------------------------------------------------------------------------------------------------------------------------------------------------------------------------------------------------------------------------------------------------------------------------------------------------------------------------------------------------------|
| Out of paper | The printer is out of paper. Add paper. When you add paper, the Status Window displays “ Ready to Print ” automatically. |
| The Cassette is Out of Paper | The cassette is out of paper. Add paper. When you add paper, printing starts automatically. |
| The Multi-purpose Tray is Out of Paper | The multi-purpose tray is out of paper. Add paper. When you add paper, printing starts automatically. |
| Paper Jam | <p>1) Paper has jammed in the printer while printing. Follow the instructions on the LCD screen of the machine, or refer to the <i>Basic Guide</i> for more information. Printing resumes automatically when the paper jam is fixed.</p> <p>2) The printer cover was left open or the toner cartridge was not properly replaced after clearing a paper jam. Close the cover securely. → <i>Basic Guide</i></p> |
| Cartridge Not Loaded | There is no toner cartridge in the printer. Install a toner cartridge. → <i>Set-up Instructions</i> |
| The Platen is Not in Position | The platen unit is not closed correctly. To resume printing slide the platen unit to the correct position. |
| Insufficient Memory | <p>The print job was too complex for available memory. Discard the last printed page, and try one or more of the following:</p> <ul style="list-style-type: none"> • Close other applications while printing this job. • Print the job in smaller sections. • Try reprinting the job with a lower resolution, such as 300 dpi. • Reformat the most complicated pages in the print job to reduce graphics and other complex formatting. |

| Message | Action |
|------------------------------|---------------------------------------------------------------------------------------------------------------------------------------------------------------------------------------------------------------------------------------------------------------------------------------------------------------------------------------------------------------------------------------------|
| Communication error | Your computer and printer are not communicating. This happens if the printer power shuts off, the cable is disconnected, or the cable is not bidirectional. |
| Printer Error | <p>Canon Advanced Printing Technology has detected an internal device error.</p> <ol style="list-style-type: none"> 1 Unplug. 2 Reinsert the power plug into the power outlet. 3 If the same error occurs, unplug the power plug again. 4 If the error persists, contact your local authorized Canon service representative. → <i>Basic Guide</i> |
| Device Busy | The device is being used by another job. Please wait until the job is finished. |
| Port Busy | The printer port is being used by other equipment. |
| Printing Temporarily Stopped | Your computer could not transfer the data to the device due to the large amount of data, or a data transfer error occurred. Click the Resume button to resume printing. |
| Waiting to Print | The current job has been interrupted by another job. Please wait until the job is finished. Printing will begin automatically. |
| Energy Saver Mode | The printer is in the energy saver mode. |
| Incompatible Device | The connected device cannot be used. Make sure that the device connected to the specified port is compatible and connected correctly. |
| Fixing Unit Error | <p>Fixing unit error.</p> <p>Unplug the power plug, and then wait about 10 minutes before you reinsert the power plug into the power outlet. If the same error occurs, unplug the power plug again. Contact your local authorized Canon service representative.</p> |

Using the Trouble Shooter

The Trouble Shooter is a utility for solving printing problems in Windows 95/98/Me or NT 4.0/2000/XP/Server 2003. The Trouble Shooter checks for system configuration setting errors, and if possible, makes automatic corrections.

The Trouble Shooter does not detect problems related to hardware, such as printer cable problems, parallel port failure, or ECP setting errors.

To start the Trouble Shooter, select the **Canon iC D800 Trouble Shooter** icon in the **Canon iC D800** group. The Trouble Shooter checks the following and corrects related problems:

- Free disk space in the drive containing the \Windows directory and free memory
- Installed files
- Selected printer port (checks to see if usable)
- Registries
- RapidPort communication device drivers (Windows NT 4.0/2000/XP/Server 2003)
- Language monitor
- Printer drivers
- Status Window
- **Printer Properties** settings
- **Canon iC D800** program folder

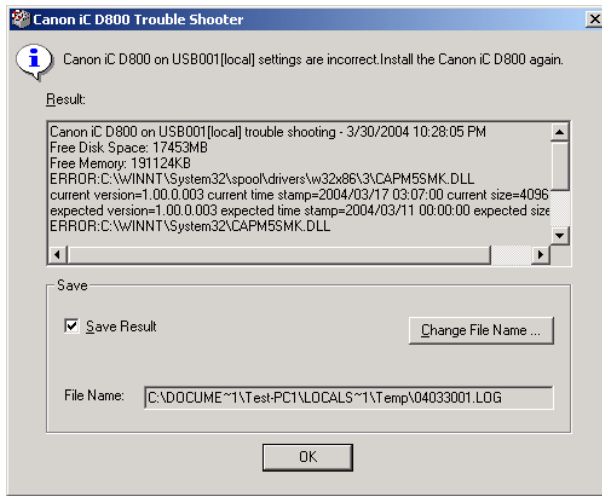
If the Trouble Shooter encounters a problem, it displays an error message. Each message includes several options, such as:

- How to correct the problem
- If the problem cannot be corrected by the Trouble Shooter
- Continue troubleshooting
- Exit Trouble Shooter
- Display help information

If Trouble Shooter is used on a network printer client, it performs network-related checks.

The Windows NT 4.0/2000/XP/Server 2003 Trouble Shooter checks whether Spooler service has started and if not, displays a dialog box.

When Trouble Shooter is done checking your files, it displays a dialog box similar to the one below.



While Trouble Shooter is running, it saves a log file with the name `tshooter.tmp` in your system temp directory, such as `\windows\temp` or `\temp`.

In the Exit dialog box, Trouble Shooter prompts if you want to save the results as a text file. Check the **Save Result** check box and enter the desired filename. The file saves with the extension of **.LOG**.

When you click **OK** in the above dialog box, the Windows Restart dialog box appears. You must restart Windows for corrections made by the Trouble Shooter to take effect.



IMPORTANT

To run Trouble Shooter for the Canon iC D800 on the network, both the server and the client must run on the same operating system.

Uninstalling CAPT

If CAPT is not working properly, it might help to remove it and install it again. Before you begin, be sure you have the installation software available for installation.

Before uninstalling CAPT, make sure you close all running applications.

To uninstall:

- 1** Click the **Start** button, then point to **Programs** (in Windows XP/Server 2003, **All Programs**).
- 2** Point to **Canon iC D800**.
- 3** Click **Canon iC D800 Uninstallation**.
- 4** Follow the on-screen instructions.
- 5** Windows 95/98/Me: Click **OK** and your system restarts.
Windows NT 4.0/2000/XP/Server 2003: Click **OK** (recommended) to restart your system.



NOTE

In Windows NT 4.0/2000/XP/Server 2003, you cannot uninstall the Canon Advanced Printing Technology unless you have administrative privileges.

Printer Specifications

Hardware

| | |
|---------------------|--------------------------------------------------------------------------------------------------------------------------------------------------------------------------------------------------------------------------------------------------------------------------------------------------------------|
| Printing speed: | 16 pages per minute (Letter) |
| Resolution: | 600 dpi |
| Paper sizes: | |
| Cassette: | Letter Plain paper, colored paper, recycled paper Maximum capacity: 500 sheets (20 lb bond (80 g/m ² paper)) |
| Multi-purpose Tray: | 3 x 5 inches to 8-1/2 x 14 inches (76.2 x 127 mm to 216 x 356 mm) Plain paper, colored paper, recycled paper, transparencies, tracing paper, thick paper, labels, envelopes, postcards Maximum capacity: 100 sheets (20 lb bond (80 g/m ² paper)), stack approx. 3/8 inches (10 mm) high |
| Paper delivery: | 100 sheets (20 lb bond (80 g/m ² paper)) |
| Startup time: | Less than 1 second (startup from the Energy Saver mode) Less than 13 seconds (when the printer is plugged into an AC outlet) (at 68° F (20° C)) |
| First print: | Less than 18 seconds (startup from the Energy Saver mode) Less than 18.5 seconds (when the printer is plugged into an AC outlet) For printing on Letter using cassette at 68° F (20° C) |
| Host interface | Bidirectional Centronics parallel cable (IEEE1284 based) interface USB interface |

Software

| | |
|----------------------|-------------------------------------------------------------|
| Printing software: | CAPT (Canon Advanced Printing Technology) |
| Valid printing area: | 1/4 inches (5 mm) top, bottom, left and right blank margins |

A

AC

Alternating Current. The type of electrical current typically available from household wall outlets.

Adapter

An optional device that allows you to connect your printer directly to a network. *See Peer-to-peer connection.*

Alert

A message displayed in the Printer Status Window when a problem or condition caused the Canon Advanced Printing Technology to pause printing. You must follow the on-screen instructions before printing resumes.

B

Bidirectional communications

Allows information to pass back and forth between the Canon Advanced Printing Technology software and a local printer.

Bold

A characteristic of a printed character that indicates wider, darker representation. Also referred to as emphasized or double-strike printing.

Brightness

The relative proportion of light and dark areas. Decreasing brightness darkens the overall image; increasing brightness lightens it.

C

Canon Advanced Printing Technology (CAPT)

Software that extends the power of the Windows operating system to a printer to speed up and simplify printing. Canon Advanced Printing Technology provides more printing control and bidirectional communication between the printer and a computer running a Windows application.

Centronics interface

An interface standard for parallel data transmission. This printer uses a Centronics-type parallel interface with bidirectional capability. *See Interface port* and *Parallel interface.*

Client

A computer that is connected to the printer over a network. A client does not control the printer directly. It interacts with the printer through a server. *See Server.*

Collate

To print multiple copies of a multi-page document in sequential page order.

Command

An instruction that tells the printer to perform a certain function. Commands are sent from the computer to the printer via the interface cable when the printer is ready.

Contrast

The degree of difference between the lightest and darkest areas of an image. Decreasing contrast lightens the dark areas and darkens the light areas; increasing it darkens the dark areas and lightens the light areas.

Control Panels

The set of Windows programs you can use to change system, hardware, software, and Windows settings.

D

Default setting

A setting that is automatically used if no other setting is specified.

Desktop

The entire Windows screen that represents your work area in Windows. Icons, windows, and the taskbar are displayed on the Windows desktop.

dpi

Dots per inch. A unit of measurement for indicating a printer's resolution. The imageCLASS D800 series prints at a resolution of 600 dpi.

Driver

A program that controls how the computer and an external device interact. The printer driver supplies Windows with information such as descriptions of the fonts and features of the installed printer. When you print with the Canon Advanced Printing Technology, you are using its printer driver.

E

ECP

Abbreviation for Extended Capabilities Port. A bidirectional communication mode that enables high-speed data transmission to printers and other devices.

F

Fixing assembly

The device used during the print process to fix the toner onto the paper (or other media) through applying heat and pressure. The assembly, located inside the printer, gets extremely hot (374°F (190°C)) during operation.

Folder

A container in which documents, program files, and other folders are stored on your disks. Formerly referred to as a *directory*.

Font

A complete set of characters of the same size and style, for example, 12-point Courier bold.

Form

A custom paper size, with width and height defined by the user.

G

Greyscale image

A bitmap image that stores data for each dot as a shade of grey, rather than as black or white.

H

Halftones

The process of converting a greyscale image to black dots and white (unprinted) dots that simulate the grey shades in the original image.

I

Image Refinement

A printer technology from Canon, with which the printer automatically senses and refines the jagged edges and ragged curves of characters and graphics.

Interface

The connection between two devices through which they communicate with each other. The imageCLASS D800 series machine features USB and parallel interfaces, which makes it compatible with IBM and similar personal computers.

Interface cable

The cable, with bidirectional capability, used to create the interface between a printer and a computer.

Interface port

The port through which the printer communicates with the computer. The imageCLASS D800 series has a USB port and a Centronics, 8-bit, parallel interface port, located on the side of the machine. *See Parallel interface and USB interface.*

Italic

A font style distinguished by slanted characters (the upright strokes of the characters are at an angle to the vertical axis).

J

Jam

A situation created when paper becomes caught along the paper path. You must remove jammed paper before you can continue printing.

K

Kilobyte (KB)

A unit of measurement, representing the binary number 1024, used to describe printer or computer memory size in thousand-byte units.

L

Landscape

The printing of text and graphics along the length of the page.

Local printer

A printer that is directly connected to your computer, using a parallel or USB cable.

M

Megabyte (MB)

A unit of measurement, representing one million bytes, used to describe printer or computer memory size.

My Computer

The Windows program that you can use to browse through your computer's filing system, and to open drives, folders, and files. You can also use My Computer to manage your files and your filing system, by moving, copying, renaming, and deleting items.

N

NetPilot

This utility is used to control network printers.

Network

A group of computers connected by cables or other means and using software that enables them to share equipment (such as printers) and exchange information.

Network Adapter

An optional device that allows you to connect your printer directly to a network. *See Peer-to-peer connection.*

O

Orientation

The printing of text either along the width (portrait) or length (landscape) of the page.

Overlay

Refers to printing in which data that is common to all the pages, such as a logo, titles or table structure, is overlaid with the print data from the application.

P

Paper feed

The act of guiding a sheet of paper into the printer's paper path.

Paper jam

A situation created when paper becomes caught along the paper path. You must remove jammed paper before you can continue printing.

Paper path

The route that paper travels through the printer.

Paper Source

Source of paper feed. The machine has a cassette and a multi-purpose tray.

Paper Type

All kinds of paper (plain paper, colored paper, recycled paper, transparencies, tracing paper, thick paper, labels, envelopes, postcards etc.) are grouped under several Paper Types. You can access this setting from the **Paper Type** field on the **Paper Source** tab of the **Printer Properties** dialog screen.

Parallel interface

An interface that transmits multiple bits simultaneously (usually in one-byte segments). Your printer has a built-in, Centronics-type parallel interface. *See Centronics interface.*

Parallel interface cable

A bidirectional cable, usually less than six feet long, that transfers multiple bits of information to the printer simultaneously, speeding the transfer. Parallel interface cables are also referred to as Centronics interface cables.

PDF

Portable Document Format. A widely used format for transmitting and viewing documents on computers. PDF documents can be read or printed out with Adobe's Acrobat Reader program.

Peer-to-peer connection

A network connection between a computer and a printer (or other device) that does not go through a server. *See Server, Client.*

Physical RAM

Random access memory (RAM) that is physically present in the computer in the form of memory chips, as opposed to virtual memory. *See Virtual Memory.*

Platen

The document scanning unit. Slide it aside to access internal parts of the machine for maintenance or removing paper jams.

Point size

Character height is defined in points: one point is 1/72 of an inch.

Portrait

The printing of text along the width (short edge) of the page.

Print job

A document that a Windows application has processed and sent to the Spooler to be added to the print queue or directly to the printer.

Print Monitor

The network adapter print monitor is software that prints through the network adapter.

Print queue

A list of files that are either waiting to be printed or are currently printing. Once a file has been printed, it is removed from the print queue.

Printer driver

A program that controls how the computer and printer interact. The printer driver supplies Windows with information such as descriptions of fonts and features of the installed printer. When you print with Canon Advanced Printing Technology, you are using its printer driver.

Printers folder

The container in which your printer information is stored.

Progress bar

In the Status Window or its icon, a horizontal bar that graphically indicates the percentage of the print job that has actually printed.

Properties dialog box

The dialog box that contains information about a particular device, such as your printer.

Proportional spacing

The spacing of characters according to the width of each character. This variable spacing between each character closes up awkward space and makes text easier to read.

Q

Queue

A list of files that are either waiting to be printed or are currently printing. Once a file has been printed, it is removed from the print queue.

R

Random Access Memory (RAM)

The working memory of the computer in which programs and data are temporarily stored while you use them. Resetting or shutting off the computer clears all information from RAM. Printing very complicated documents might require closing other running programs or adding more RAM to the computer. *See Physical RAM, Virtual Memory.*

Resolution

The density of dots for any given output device, expressed in terms of dots per inch (dpi). Low resolution causes font characters and graphics to have a jagged appearance, but prints faster than higher resolutions. Higher resolution provides smoother curves and angles as well as a better match to traditional typeface designs, but prints more slowly. This printer can produce output with 300 or 600 dpi resolution. Resolution values are represented by horizontal data and vertical data, for example, 600 x 600 dpi.

Reverse Output Order

This function allows printing pages of the document in reverse order: from the last page to the first page.

S

Scalable fonts

Scalable fonts allow characters to be printed in various sizes and rotation angles. This is different from bitmap fonts, which are printed in fixed sizes and angles.

Scaling

Enlarging or reducing the printed image.

Separator page

Optional pages printed at the beginning of each document to help separate one print job from another.

Server

A network computer that is directly attached to the printer. The server controls the printer and handles print jobs sent from the clients. *See Client.*

Shielded

A type of cable that contains a metallic sheath over the conductor material to protect the data passing through the cable from electromagnetic interference. You need to use a double-shielded interface cable with this printer.

Spooling

A process by which an application sends a document to the Spooler, rather than directly to the printer, thus freeing the computer and application for other tasks. Spooled documents are printed in the order they are received.

Start menu

The menu that presents commands that are a starting point for all work you do on your computer, such as starting a program, opening a document, finding a file, and getting help. You open the Start menu by clicking the Start button displayed on the Desktop.

Status options

Settings which determine when the Printer Status Window opens and whether sounds play with messages.

Status Window

A window that Canon Advanced Printing Technology uses to display messages about the current print job, as well as to graphically show the print job's progress from computer to printer.

T

Title bar

The horizontal bar that contains the title of a window or dialog box. On many windows, the title bar contains the Control menu box and Maximize and Minimize buttons.

Toner

A black, resin-coated powder contained in the Cartridge L50. The printer applies the toner to the surface of the photosensitive drum inside the printer via an electrophotographic mechanism.

Toner saver

Because the black areas of print data are thinned, toner consumption is reduced.

Tool bar

In the Status Window, the area in the tab window that includes buttons for pausing, resuming, and deleting the current print job.

Transfer roller

Presses the paper against the drum, to aid the transfer of toner to the paper.

Trouble Shooter

A program that helps you solve printing problems. The Trouble Shooter checks the Windows configuration settings, and if possible corrects any errors that it finds.

TrueType fonts

Scalable fonts used for both screen display and printing. TrueType fonts can be sized to any height, and print exactly as they appear on the screen, but with higher resolution.

U

USB interface

Universal Serial Bus. A new serial interface standard which automatically recognizes connections (Plug and Play) to allow plugging and unplugging connectors with the power still turned on to the PC or peripheral equipment.

V

Virtual Memory

Space on the hard disk that Windows uses for temporary data storage as if it were actually random access memory (RAM). Windows does this by means of a swap file. This provides Windows with more usable memory, but reduces speed of access to it when the swap file must be used. *See Physical RAM.*

W

WebNetSpot

This utility is used to control network printers.

Weight

Refers to the thickness of a font: light, medium, or bold. Also refers to the thickness of paper.

Windows Explorer

The Windows program you can use to browse through, open, and manage the disk drives, folders, and files on your computer in a network system. You can also use Windows Explorer to view and open shared folders on other computers on the network. You can use Windows Explorer to manage your files by moving, copying, renaming, and deleting files.

WYSIWYG

Pronounced wizzy-wig, an acronym for “what you see is what you get.” For example, when you format a paragraph, the line breaks that appear on the printed page are exactly the same as they are on the screen.

Numerics

600 dpi A-1

A

Abnormal condition icon 4-13

AC G-1

Add Printer Wizard

Windows 2000/XP/Server 2003 2-22–2-27

Windows 95/98/Me 2-8–2-12

Windows NT 4.0 2-18–2-21

Adobe Type Manager fonts, cannot use 5-4

Attention required icon 4-13

B

Bidirectional communications G-1

parallel cable 2-43

Brightness 3-14, 3-29, G-1

C

Cancel button 4-8

Cancel printing 4-4

Cancel, print job 4-8

Canon Advanced Printing Technology (CAPT) G-1

CAPT Problems 5-4–5-5

installing 2-2–2-41

messages 5-6–5-7

not working properly 5-4

printing with 2-43

uninstalling 5-10

Canon CAPT Tools 2-42

Canon iC D 800

Help 2-42

Status Window 2-42

Trouble Shooter 2-42

Uninstallation 2-42

Cartridge Not Loaded 5-6

Cassette A-1

Cassette is out of paper 5-6

CD-ROM

File not found 5-5

CD-ROM Menu, doesn't open 5-4

Centronics interface 5-2, G-1

Checking the status of a print job 4-1

Client G-1

Collate G-2

Communication error 5-7

Contrast 3-14, G-2

Control Panels G-2

Custom paper size 3-7

selecting 3-8

D

Default setting G-2

Details tab, Windows 95/98/Me 3-4

Details... button 3-15, 3-30

Device Busy 5-7

Device time-out 5-3

Dialog boxes

Windows 95/98/Me printer properties 3-2–3-15

Windows NT 4.0/2000/XP/Server 2003 printer properties 3-16–3-30

dpi G-2

Driver, *See* Printer driver

E

ECP 4-6, G-2

Energy Saver Mode 5-7

F

Finishing tab

Windows 95/98/Me 3-12

Windows NT 4.0/2000/XP/Server 2003 3-27

First print time A-1

Fixing assembly G-2

Fixing Unit Error 5-7

Font G-3

Form G-3

G

General tab

Windows 95/98/Me 3-3

Windows NT 4.0/2000/XP/Server 2003 3-17

Glossary G-1–G-9

Greyscale image G-3

H

Halftones G-3

Help menu, using 4-7

I

Icons, Status Window 4-13

Image Refinement 3-15, 3-30, G-3

Incompatible Device 5-7

Installing Canon Advanced Printing Technology 2-2–2-27

Insufficient Memory 5-6

Interface G-3

Interface cable G-3

Interface port G-3

J

Job menu, using 4-4

L

Landscape G-4
Local printer 2-2–2-27

M

Megabyte G-4
Memory, Insufficient 5-6
Menu bar
 Status Window 4-3
 using 4-4–4-6
Messages 5-6–5-7
Minimizing, Status Window 4-13
Multi-purpose tray A-1
Multi-purpose Tray is Out of Paper 5-6

N

NetPilot G-4
Network Adapter G-4
Network printer 2-32–2-41
No power supplied 5-2

O

Options menu, using 4-5–4-6
Orientation G-4
Out of paper 5-6
Overlay 3-9, 3-24, G-5

P

Page setup tab
 custom paper size 3-7
 Windows 95/98/Me 3-6
 Windows NT 4.0/2000/XP/Server 2003 3-23
Pages per minute A-1
Paper
 delivery A-1
Paper feed G-5
Paper Jam 5-6
Paper selection tab
 Windows NT 4.0/2000/XP/Server 2003 3-20
Paper size A-1
 custom 3-7
Paper Source G-5
Paper Type G-5
Parallel interface G-5
 cable 2-43
Parallel interface cable G-5
Pause button 4-8
Pause printing 4-4
PDF G-5
Peer-to-peer G-5
Plain paper A-1
Plug and play for Parallel Port
 Windows 2000/XP/Server 2003 2-15–2-17

Plug and play for USB Port

 Windows 2000/XP/Server 2003 2-13–2-15
 Windows 98/Me 2-3–2-8

Port Busy 5-7

Portrait G-6

Ports tab, Windows NT 4.0/2000/XP/Server 2003 3-17

Power

 not supplied 5-2

Print job details tab 4-9

Print job list tab 4-11

Print job log tab 4-10

Print Monitor G-6

Print queue G-6

Printer

 does not print 5-2

 locks up 5-3

 problems 5-2–5-3

 specifications A-1

 speed A-1

 stops printing 5-2

Printer animation, status window 4-3

Printer driver 5-4, G-6

Printer Error 5-7

Printer icon 4-3

Printer properties

 Windows 95/98/Me dialog boxes 3-2–3-15

 Windows NT 4.0/2000/XP/Server 2003 dialog
 box 3-16–3-30

Printer ready icon 4-13

Printer sharing settings 2-41

Printing

 speed A-1

Printing paused icon 4-13

Printing speed A-1

Printing Temporarily Stopped 5-7

Printout is wrong 5-3

Problems

 printer 5-2–5-3

Progress bar G-6

Progress bar, status window 4-3

Q

Quality tab

 Windows 95/98/Me 3-14, 3-15

 Windows NT 4.0/2000/XP/Server 2003 3-29, 3-30

Queue G-6

R

Random Access Memory G-7

Removing Canon Advanced Printing Technology 5-10

Resolution A-1, G-7

Resume button 4-8

Resume printing 4-4

Reverse Output Order G-7

S

- Scaling G-7
- Scheduling tab, Windows NT 4.0/2000/XP/Server 2003 3-18
- Security tab, Windows NT 4.0/2000/XP/Server 2003 3-19
- Selecting
 - custom paper size 3-8
- Server G-7
- Server settings
 - Windows NT 4.0/2000/XP/Server 2003 2-38
- Settings menu, using 4-5–4-6
- Settings, printer sharing 2-41
- Sharing tab
 - Windows 95/98/Me 3-5
 - Windows NT 4.0/2000/XP/Server 2003 3-18
- Shielded G-7
- Specifications, printer A-1
- Speed, printing A-1
- Spooling G-7
- Status bar, status window 4-3
- Status Window G-8
 - icon 4-13
 - menu bar 4-3
 - printer animation 4-3
 - printer icon 4-3
 - progress bar 4-3
 - status bar 4-3
 - tool bar 4-3
- System 1-2
- System Requirements 1-2

T

- Tab window
 - print job details 4-9
 - print job list 4-11
 - print job log 4-10
 - using 4-9
- The Platen is Not in Position 5-6
- Time-out, device 5-3
- Toner G-8
 - saver G-8
- Toolbar
 - status window 4-3
 - using 4-8
- Trademarks iv
- Transfer roller G-8
- Trouble Shooter 2-42, 5-8–5-9
- Troubleshooting 5-1–5-10
 - CAPT problems 5-4–5-5
 - printer problems 5-2–5-3
 - removing Canon Advanced Printing Technology (Uninstallation) 5-10
 - USB class driver is not properly installed 5-5

U

- Uninstallation 5-10
- USB
 - cable 2-3, 2-13
 - interface G-9
 - port 2-3, 2-13
- Using
 - Trouble Shooter 5-8–5-9
 - USB Port (USB Cable) 2-3, 2-13

W

- Warning icon 4-13
- WebNetSpot G-9
- Weight, paper A-1, G-9
- Windows 95/98/Me 2-3
 - details tab 3-4
 - finishing tab 3-12
 - general tab 3-3
 - page setup tab 3-6
 - Printer Property 3-2–3-15
 - quality tab 3-14, 3-15
 - sharing tab 3-5
- Windows NT 4.0/2000/XP/Server 2003
 - finishing tab 3-27
 - general tab 3-17
 - page setup tab 3-23
 - paper selection tab 3-20
 - ports tab 3-17
 - quality tab 3-29, 3-30
 - scheduling tab 3-18
 - security tab 3-19
 - server settings 2-38
 - sharing tab 3-18
- WYSIWYG G-9