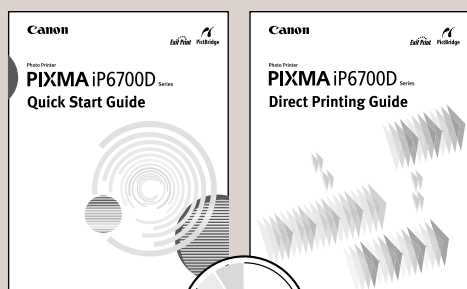


1 Unpack the Printer

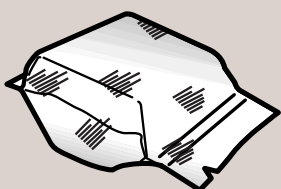
- Carefully remove all items from the box.



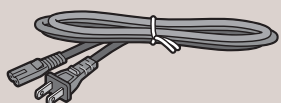
PIXMA iP6700D
Photo Printer



Documentation and
Software Kit



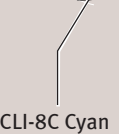
PIXMA iP6700D
Print Head



Power Cord



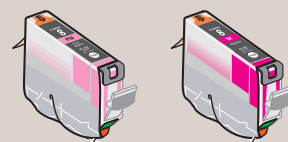
CLI-8BK Black



CLI-8C Cyan



CLI-8PC Photo Cyan



CLI-8M Magenta



CLI-8Y Yellow

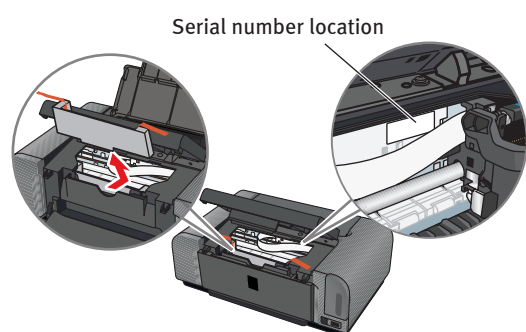
CLI-8PM Photo Magenta

Ink Tanks

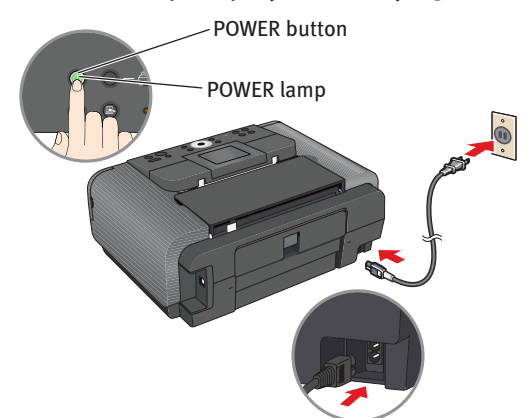
2 Prepare the Printer

- Before turning on the printer, open the cover and remove the protective material and tape from the printer as shown. The tape position is subject to change. Write down the serial number located inside the printer. You will need this to register your products.

CAUTION: Be sure to remove the protective material before you turn on the printer.



- Close the cover. Plug the power cord into the back of the printer and connect the other end to a power outlet. Press the **POWER** button. The printer will initialize. Wait until the **POWER** lamp displays a steady light.



NOTE: Do not connect the USB cable at this stage.

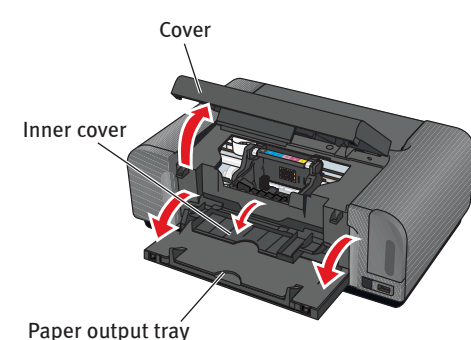
- When the screen shown on the LCD appears, use the **▲ ▼** buttons to select a language and then press the **OK** button.

NOTE:

- If the language you want to be displayed is not selected, refer to "An unintended language is displayed on the LCD" in the Direct Printing Guide.
- If you leave the printer more than five minutes without using any button on the operation panel, the LCD goes into sleep mode automatically. Press the **OK** button to turn on the LCD again.

- Pull down the paper output tray. Raise the cover. Lower the inner cover.

NOTE: Put your fingers in the notches in either side of the paper output tray and pull down to open it.

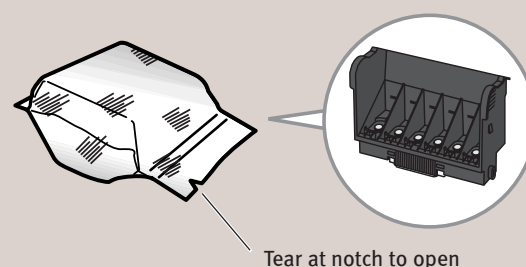


- The print head holder automatically moves to the center.

IMPORTANT: If the cover is left open for more than ten minutes, the print head holder moves to the right. Close and reopen the cover to return the holder to the center.

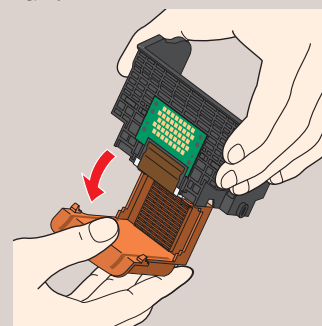
3 Install the Print Head

- Remove the print head from its package.

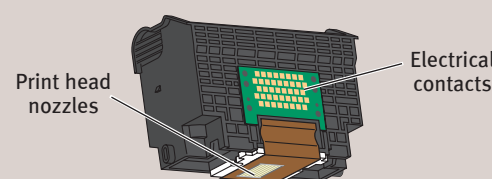


CAUTION: There might be some transparent or light blue ink on the inside of the bag the print head comes in, or the inside of the protective cap. This has no effect on print quality. Be careful not to get ink on yourself when handling these items.

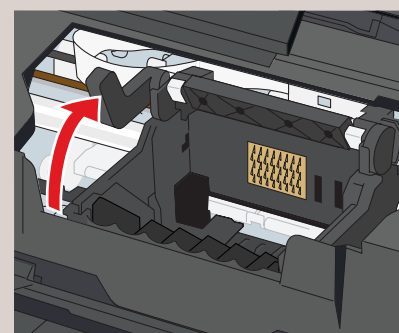
- Remove the orange protective cap from the print head.



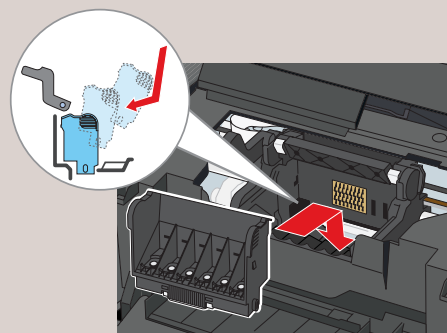
NOTE: Do not touch the print head nozzles and the electrical contacts.



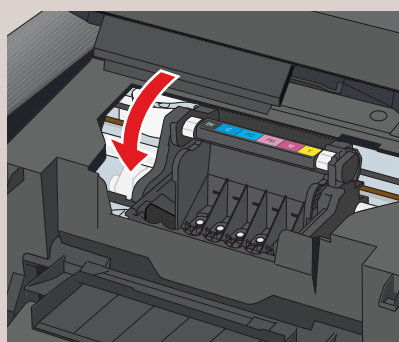
- Firmly raise the print head lock lever until it stops into place.



- Slide the print head into the holder. The print head will rest at a slight angle.

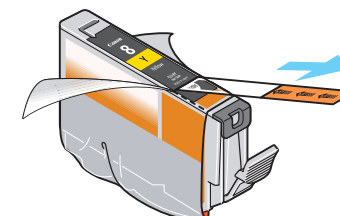


- Lower the print head lock lever carefully and press it down.



4 Install the Ink Tanks

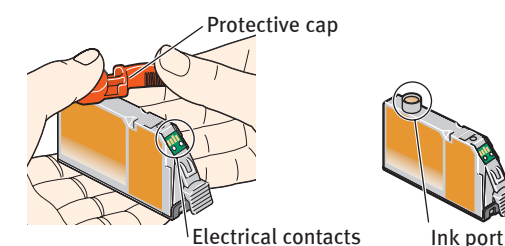
- Peel back the orange tab completely and remove the plastic wrapper from the Yellow Ink Tank (CLI-8Y).



- Twist off and discard the orange protective cap located on the bottom of the ink tank.

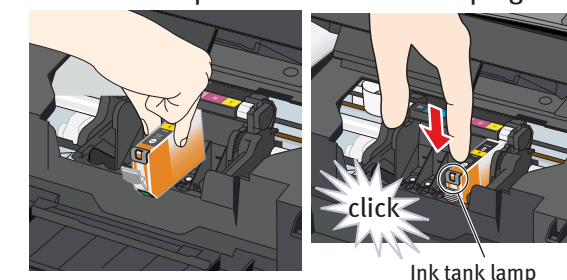
IMPORTANT: Do not touch the electrical contacts.

NOTE: To avoid spilling ink, never press on the sides of an ink tank. Do not touch the open ink port once the protective cap is removed, as this may prevent the ink from being ejected properly.

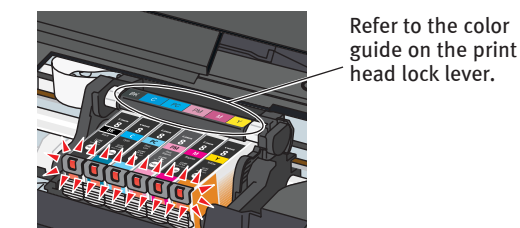


- Insert the yellow ink tank into the right-hand slot.

Press the **PUSH** mark on the ink tank until it clicks into place and then its lamp lights red.



- Insert the remaining five ink tanks into their appropriate slots. Ensure that ink tank lamps light red.



- Close the inner cover and then the cover. The message requesting head alignment is displayed on the LCD. Go to the next step.

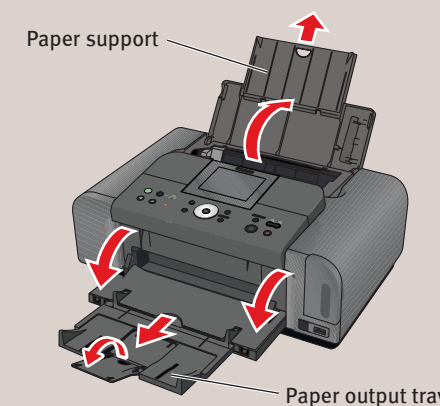
NOTE:

- The printer will perform a print head cleaning. Wait until the **POWER** lamp displays a steady light before proceeding.
- If the **Alarm** lamp still lights even after the printer has stopped making operating noises, an ink tank may not be installed properly. Open the cover and make sure that the ink tanks are installed in the correct order directed on the label.

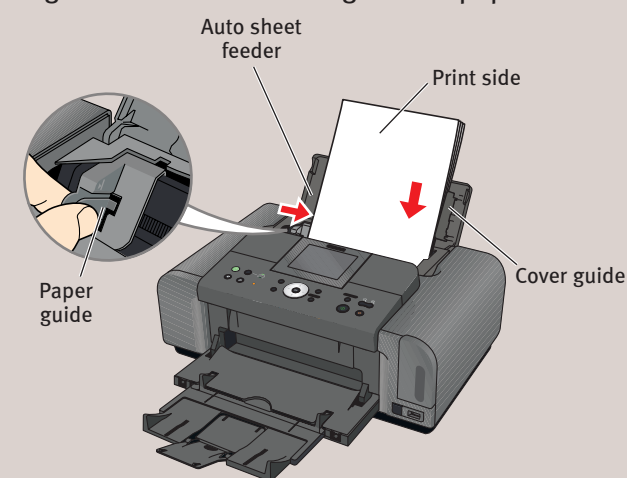
5 Align the Print Head

- Lift open the paper support and extend the paper output tray.

IMPORTANT: Be sure to close the inner cover completely, or the paper will not feed properly.



- Pinch the paper guide and slide it to the left. Load a few sheets of blank paper into the auto sheet feeder, align the paper with the right side of the cover guide, then slide the paper guide toward the left edge of the paper.



- Ensure that the message requesting head alignment is displayed on the LCD, select **Yes** using the **▲ ▼** buttons and then press the **OK** button.

The pattern is printed. And the print head is aligned automatically.

IMPORTANT: It takes about 4 minutes to finish printing.

When automatic print head alignment cannot be executed correctly, the message "Auto head align has failed. Press [OK] and repeat operation. <See manual>" is displayed on the LCD. Refer to "An Error Message is Displayed on the LCD" in the Direct Printing Guide.

Continue with Step 6 on side two.



6 Windows® Printer Driver Installation

Windows

NOTE: The screens below refer to Windows XP Service Pack 2 installation. Screens may differ depending on the operating system you are using.

1 TURN THE PRINTER OFF.

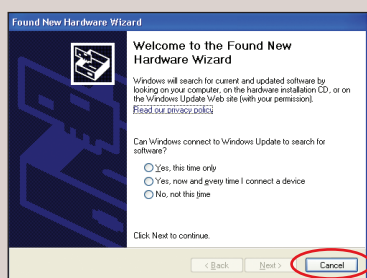
You hear the operation sound until the printer is turned off. It may take about 30 seconds.

2 Turn the computer on and start Windows.

NOTE:

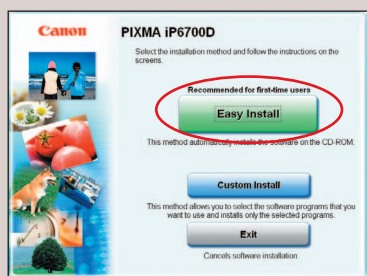
- For Windows XP or Windows 2000, log on to Windows as a member of Administrators group before continuing.
- Before installing the driver, disable all anti-virus programs and automatically loading programs.

IMPORTANT: If you see the **Found New Hardware Wizard**, click **Cancel**. Next, remove the USB cable connected to your computer. Then proceed from step 3 to install the printer driver.



3 Insert the **Setup CD-ROM**. The setup program should run automatically.

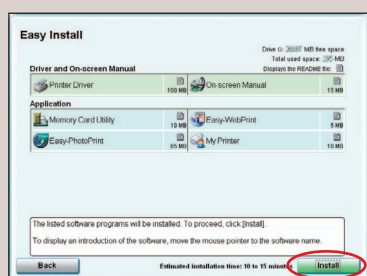
4 When the main menu appears, click **Easy Install** and follow the on-screen instructions.



NOTE:

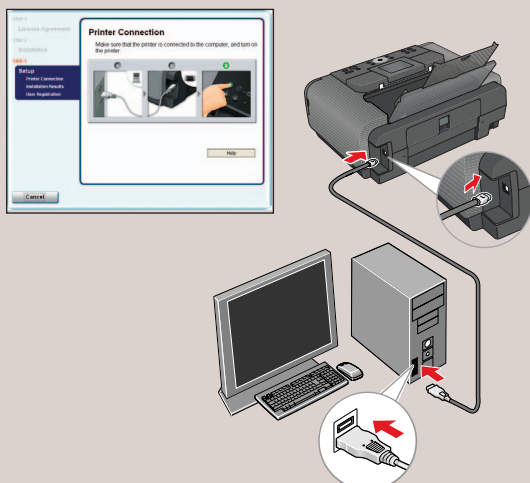
- Select **Easy Install** in order to install the application software, electronic manuals and printer driver. Select **Custom Install** in order to choose the options you would like to install.
- To install PhotoRecord or Adobe® RGB (1998), click **Custom Install** and follow the instruction on the screen.
- Adobe RGB (1998) cannot be installed in Windows Me and Windows 98.

5 When the list of applications to install appears, verify the contents, click **Install**, then follow the instructions on the screen. Move the cursor over items to display explanations of each application below.



6 Read the **License Agreement** and click **Yes**. Follow the on-screen instructions to install the software. If the message asking for your confirmation to restart your computer appears, click **OK**. The system is restarted automatically.

7 When the **Printer Connection** screen appears, connect the USB cable to the computer and the other end to the printer.

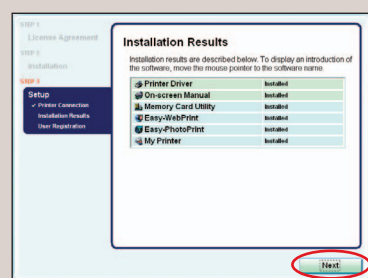


8 TURN THE PRINTER ON.

IMPORTANT: If you cannot proceed to the next procedure after two minutes, refer to "Troubleshooting" instructions in the *Quick Start Guide*.

If the message asking for your confirmation to restart your computer appears, click **OK**. The system is restarted automatically.

9 Follow the on-screen instructions to install the remaining software. When the **Installation Results** screen appears, click **Next**.



10 Follow the on-screen instructions to register your product. If the message asking for your confirmation to restart your computer appears, click **OK**. The system is restarted automatically.

11 When the **Installation completed successfully** screen appears, click **Exit**.



If **Restart** is displayed, ensure the **Restart the system now (recommended)** check box is selected, then click **Restart**.

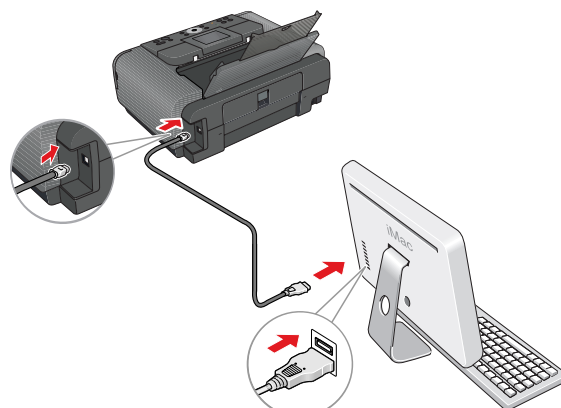
6 Macintosh® Printer Driver Installation

Macintosh

NOTE:

- Use Mac® OS X v.10.2.8 to 10.4.x.
- The screens below refer to Mac OS X v.10.4.x installation. Screens may differ depending on the operating system you are using.
- Before installing the driver, disable all anti-virus programs and automatically loading programs.
- Do not remove or insert the USB cable during installation, as this may result in the computer or printer not operating normally.


1 Connect the printer to the computer with the USB cable.



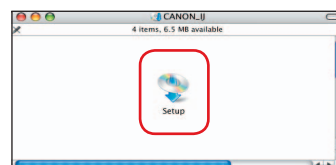
2 Turn on the computer and start Mac OS X.

3 Insert the **Setup CD-ROM**.

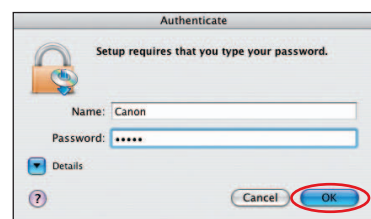
NOTE:

- If the **CD-ROM** folder does not open automatically, double-click the  on the desktop.
- Log on as an **Administrator** before continuing.

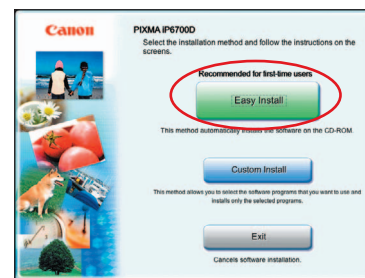
4 Double-click the **Setup** icon.



5 When the **Authenticate** screen appears, enter your administrator name and password. Click **OK**. If you do not know your administrator name or password, click **?** on the lower-left corner of the screen, then follow the on-screen instructions.



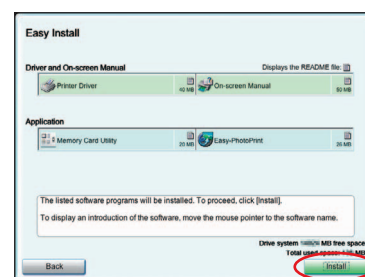
6 When the main menu appears, click **Easy Install** and follow the on-screen instructions.



NOTE:

Select **Easy Install** in order to install the application software, electronic manuals and printer driver. Select **Custom Install** in order to choose the options you would like to install.

7 When the **Easy Install** screen appears, click **Install**.



NOTE:

If you point to an application in the list, the explanation for the printer driver or an application is displayed.

8 Read the **License Agreement**, then click **Yes**. Follow the on-screen instructions to install the software.

9 Follow the on-screen instructions to register your product.

10 When the **Installation completed successfully** screen appears, click **Restart**.

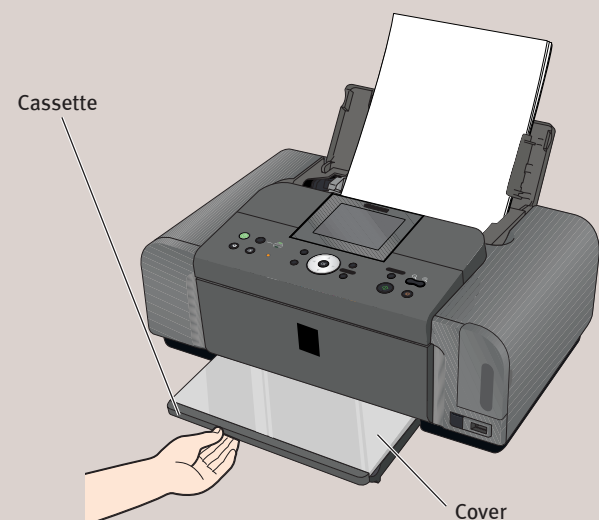


11 After restarting the computer, select **Applications** from the **Go** menu. Double-click the **Utilities** folder, and then double-click the **Printer Setup Utility (Print Center)** when you use Mac OS X v.10.2.8) icon. Check that your printer name is displayed on the **Printer List**. If your printer name is not displayed on the **Printer List**, click **Add** to add the printer. For details, refer to the Printer Setup Utility Help or Mac Help.

7 Cassette Loading

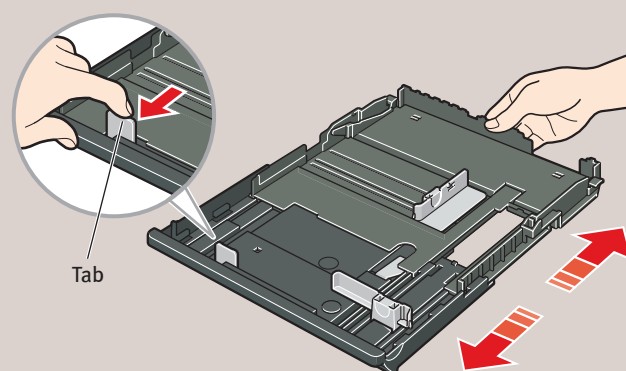
You can load paper in both the auto sheet feeder and cassette.

1 Pull out the cassette from the bottom of the printer.

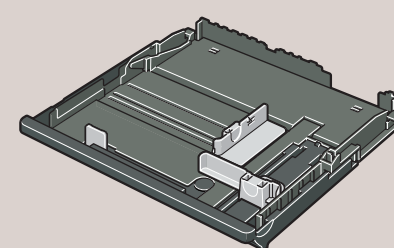


2 Remove the cover of the cassette.

3 For A5 or larger sized paper, pull the tab towards you to unlock before extend the cassette.



A5 or larger
(nonstandard-size paper: 203 mm/8 inches or more in length)



5" x 7" or smaller
(nonstandard-size paper: less than 203 mm/8 inches in length)

4 Load the paper into the cassette with the print side facing DOWN.

NOTE: Loading paper in the cassette provides additional paper handling flexibility. For additional information visit the electronic *User's Guide*.