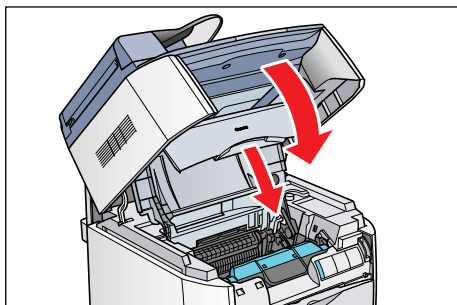


ATTENTION

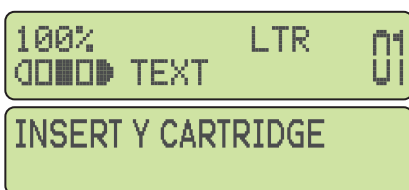
- Read this document before installing toner cartridges.
- Please follow these steps before proceeding with Step 6 in the *Set-Up Instructions for the Machine*.

6 Install the toner cartridges.

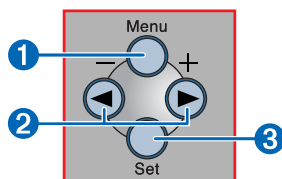
1 Close the cartridge cover and lower the scanning platform.



2 The LCD alternates between the standby display and the message to insert toner cartridges (Y/M/C/K).



3 Press [Menu] ① on the operation panel.



4 Press ◀ or ▶ ② to select <10.MAINTENANCE> on the LCD and press [Set] ③.



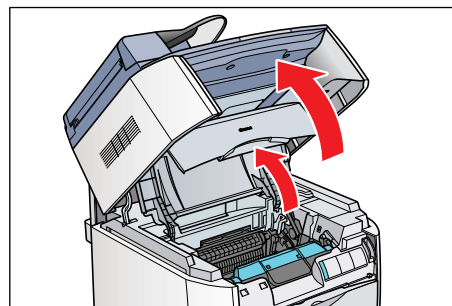
5 Press ◀ or ▶ ② to select <1.CHANGE CARTRIDGE> on the LCD and press [Set] ③.



6 Press ◀ or ▶ ② to select <5.ALL COLORS> on the LCD and press [Set] ③.

SELECT CARTRIDGE
5. ALL COLORS

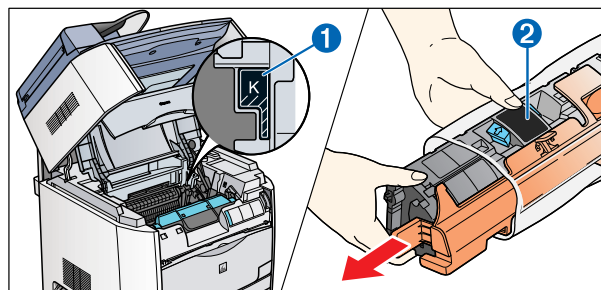
7 The LCD displays OPEN PRINTER COVER/PRESS STOP TO FINISH. Lift the scanning platform and open the cartridge cover.



8 Follow 1 to 6 of Step 6 from *Set-Up Instructions for the Machine* to install the cartridges one by one.

NOTE

- For each cartridge, match the color marking on the cartridge receptacle ① in the machine to the color marking on the cartridge itself ②.



- Allow approximately two seconds for the cartridge cradle to rotate to the next receptacle. The receptacles appear in this order: Yellow > Magenta > Cyan > Black.

9 After installing all four cartridges, close the cartridge cover and lower the scanning platform. The LCD flashes PLEASE WAIT until calibration is complete. Please allow a few minutes for the machine to calibrate itself.