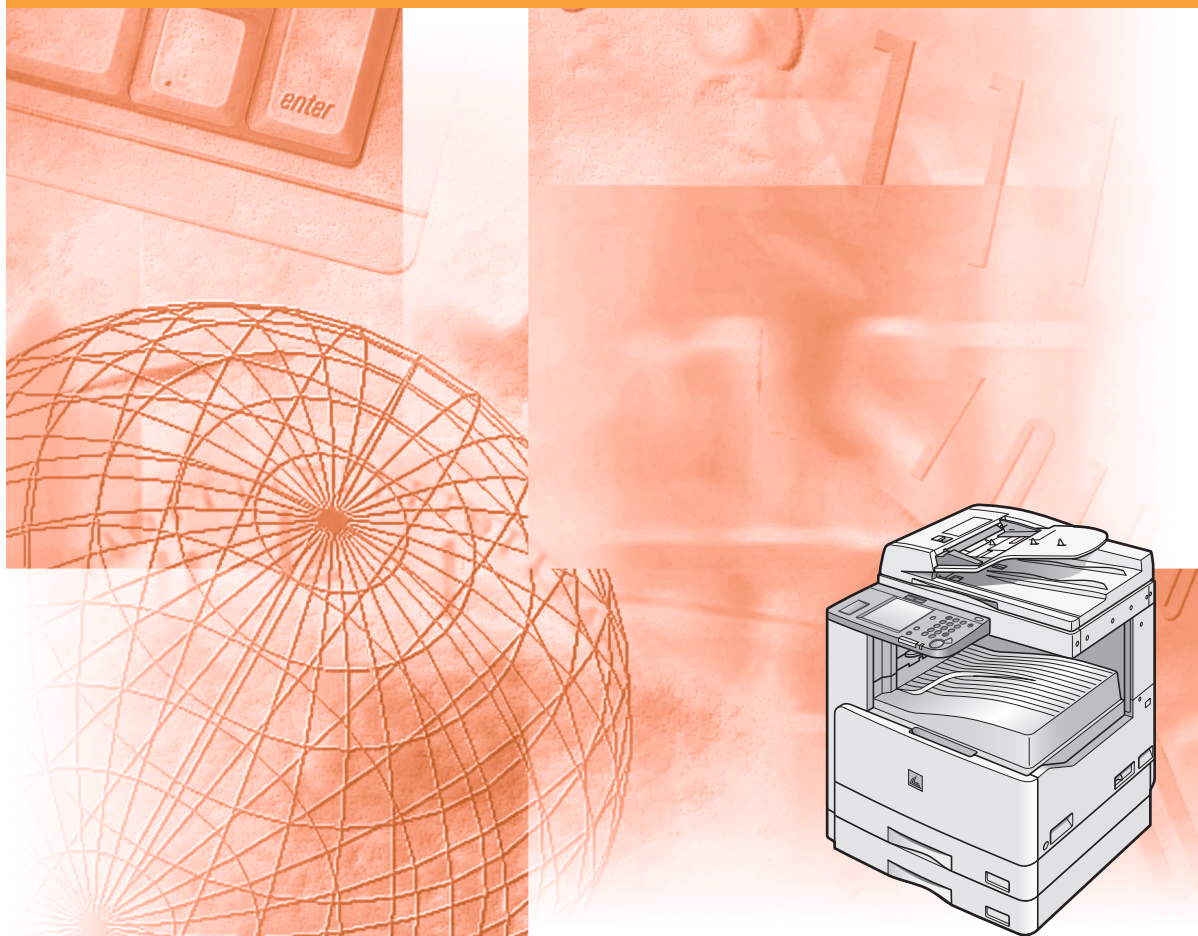


Canon

imageCLASS MF 7280

Network Quick Start Guide



Please read this guide before operating this equipment.
After you finish reading this guide, store it in a safe place for future reference.

ENG

**imageCLASS
MF7280
Network Quick
Start Guide**

Manuals for the Machine

The manuals for this machine are divided as follows. Please refer to them for detailed information.



Guides with this symbol are printed manuals.



Guides with this symbol are PDF manuals included on the accompanying CD-ROM. (See footnote.)

- **Machine Set-Up**
- **Driver Installation**
- **Quick Reference for Basic Operations**
- **Basic Operations**
- **Troubleshooting**
- **Copying Instructions**
- **Sending Instructions**
- **Fax Instructions**
- **Setting Up the Network Connection and Installing the CD-ROM Software**
- **Remote User Interface Instructions**
- **Network Connectivity and Setup Instructions**
- **PCL/UFR II Printer Instructions**
- **PCL Printer Driver Installation and Instructions**
- **UFR II Printer Driver Installation and Instructions**
- **Fax Driver Installation and Instructions**

Starter Guide



Easy Operation Guide



Reference Guide



Copying Guide



Sending Guide



Facsimile Guide



Network Quick Start Guide (This Document)



Remote UI Guide



Network Guide



PCL/UFR II Printer Guide



PCL Driver Guide



UFR II Driver Guide



Fax Driver Guide



-
- To view the manual in PDF format, Adobe Reader/Acrobat Reader/Acrobat is required. If Adobe Reader/Acrobat Reader/Acrobat is not installed on your system, please download it from the Adobe Systems Incorporated website (<http://www.adobe.com>).
 - The machine illustration on the cover may differ slightly from your machine.



How This Manual Is Organized

Chapter 1 Connecting the Machine to a Network

Chapter 2 Installing Software

Contents

Preface	v
How to Use This Manual	v
Symbols Used in This Manual	v
Buttons Used in This Manual	v
Abbreviations Used in This Manual	vi
Legal Notices	vii
Trademarks	vii
Copyright	vii
Disclaimers	vii
User Manual CD-ROM Menu	viii
System Requirements	viii
Using The CD-ROM Menu	ix
Chapter 1 Connecting the Machine to a Network	

Setting Up the Network Connection	1-2
Settings Flowchart	1-2
Connecting the Machine	1-3
Connecting to a Network	1-4
Connecting to a USB Interface	1-5

Chapter 2 Installing Software	
--------------------------------------	--

User Software	2-2
UFR II Printer Kit/Super G3 FAX Board CD-ROM	2-2
PCL Printer Kit CD-ROM	2-3
System Requirements	2-3
Software Installation Instructions	2-4
Installing a Printer and/or Fax Driver	2-4
Installing Canon Font Manager	2-18
Installing NetSpot Device Installer	2-19
Installing Canon LPR2	2-19

Preface

Thank you for purchasing the Canon imageCLASS MF7280. Please read this manual thoroughly before operating the machine to familiarize yourself with its capabilities, and to make the most of its many functions. After reading this manual, store it in a safe place for future reference.

How to Use This Manual

Symbols Used in This Manual

The following symbols are used in this manual to explain procedures, restrictions, handling precautions, and instructions that should be observed for safety.



CAUTION

Indicates a caution concerning operations that may lead to injury to persons, or damage to property if not performed correctly. To use the machine safely, always pay attention to these cautions.



IMPORTANT

Indicates operational requirements and restrictions. Be sure to read these items carefully to operate the machine correctly, and avoid damage to the machine.



NOTE

Indicates a clarification of an operation, or contains additional explanations for a procedure. Reading these notes is highly recommended.

Buttons Used in This Manual

The following symbols and button names are a few examples of how buttons to be pressed are expressed in this manual:

- Buttons on Computer Operation Screens: [Button Name]

Examples: [OK]
 [Start] menu
 [CD-ROM] icon

Abbreviations Used in This Manual

Microsoft® Windows® 98 operating system:	Windows 98
Microsoft® Windows® Millennium Edition operating system:	Windows Me
Microsoft® Windows NT® 4.0 operating system:	Windows NT
Microsoft® Windows® 2000 operating system:	Windows 2000
Microsoft® Windows® XP operating system:	Windows XP
Microsoft® Windows Server™ 2003 operating system:	Windows Server 2003
Microsoft® Windows® operating system:	Windows

Legal Notices

Trademarks

Canon, the Canon logo, imageCLASS, and NetSpot are registered trademarks of Canon Inc. in the United States and may also be trademarks or registered trademarks in other countries.

Adobe is trademarks of Adobe Systems Incorporated.

Microsoft, Windows, and Windows NT are registered trademarks of Microsoft Corporation in the United States and other countries.

Windows Server is a trademark of Microsoft Corporation in the United States and other countries.

PCL, PCL5, and PCL6 are trademarks of Hewlett-Packard Company.

Ethernet is a trademark of Xerox Corporation.

Other products and company names herein may be the trademarks of their respective owners.

Copyright

Copyright 2006 by Canon Inc. All rights reserved.

No part of this publication may be reproduced or transmitted in any form or by any means, electronic or mechanical, including photocopying and recording, or by any information storage or retrieval system without the prior written permission of Canon Inc.

Disclaimers

The information in this document is subject to change without notice.

CANON INC. MAKES NO WARRANTY OF ANY KIND WITH REGARD TO THIS MATERIAL, EITHER EXPRESS OR IMPLIED, EXCEPT AS PROVIDED HEREIN, INCLUDING WITHOUT LIMITATION, THEREOF, WARRANTIES AS TO MARKETABILITY, MERCHANTABILITY, FITNESS FOR A PARTICULAR PURPOSE OF USE OR NON-INFRINGEMENT CANON INC. SHALL NOT BE LIABLE FOR ANY DIRECT, INCIDENTAL, OR CONSEQUENTIAL DAMAGES OF ANY NATURE, OR LOSSES OR EXPENSES RESULTING FROM THE USE OF THIS MATERIAL.

User Manual CD-ROM Menu

The User Manual CD-ROM Menu is software that enables you to select and view PDF Manuals included on the CD-ROM via your computer screen. Follow the instructions below to use the User Manual CD-ROM Menu.

System Requirements

The User Manual CD-ROM Menu can be used in the following system environments.

	Windows
Operating System	Windows 98 Windows Me Windows NT (Service Pack 3 or later) Windows 2000 (Service Pack 3 or later) Windows XP (Service Pack 1a or later) Windows Server 2003
Memory	The memory required to run the above operating systems.
Computer	A computer that can run the above operating systems.
Display	A resolution of 1024 × 768 pixels or higher.



IMPORTANT

Depending on the configuration of your computer, some functions may not operate correctly. If the PDF manual does not open from the CD-ROM Menu, open the PDF file directly from the [english] folder on the User Manual CD-ROM.

Using The CD-ROM Menu

This section describes how to use the CD-ROM Menu. When you insert the User Manual CD-ROM provided into the CD-ROM drive, the Language Selection screen is displayed. Clicking [English] on this screen displays the following menu.



① **BROWSE MANUAL**

You can read any of the listed guides by clicking on the desired guide. After clicking on the desired guide, Acrobat Reader starts, and the PDF manual is displayed.

② **RETURN**

Return to the Language Selection screen.

③ **EXIT**

Exit the CD-ROM menu.

Connecting the Machine to a Network

1

CHAPTER

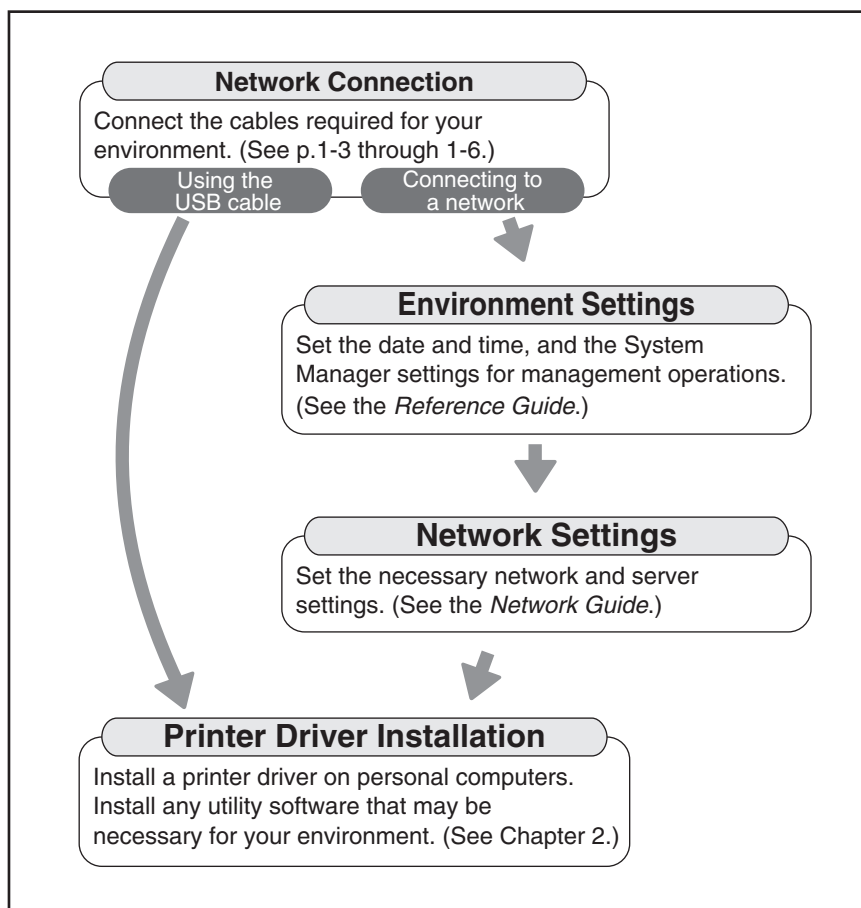
This chapter describes how to connect the machine to a computer or network so you can print from the machine.

Setting Up the Network Connection	1-2
Settings Flowchart	1-2
Connecting the Machine	1-3
Connecting to a Network	1-4
Connecting to a USB Interface	1-5

Setting Up the Network Connection

Before using the machine in a network environment, it is necessary to perform the following setup procedures.

Settings Flowchart



Connecting the Machine

This section describes how to connect the machine to a computer or network, and describes the types of connection and cables you can use.

The machine can be connected to a computer or network with a USB (Universal Serial Bus) cable or 10Base-T/100Base-TX Ethernet cable.



CAUTION

When connecting the interface cable or network cable, be sure to observe the following precautions in order to avoid electrical shock.

- Turn OFF the main power switch before disconnecting the power cord from the power outlet. (See Chapter 1, “Before You Start Using This Machine,” in the *Reference Guide*.)
- Turn OFF the computer and disconnect the power cord from the power outlet.

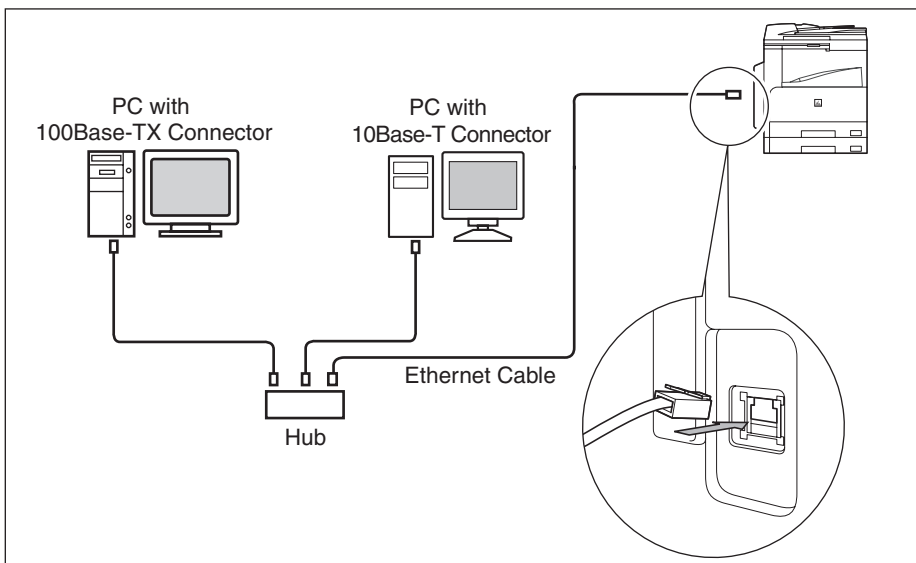


IMPORTANT

- External USB devices (i.e. memory, keyboard, mouse, etc.) are not supported.
- A USB cable or a network cable is not included in this package. Please obtain a suitable cable for your computer or network.

Connecting to a Network

Connect the machine's RJ-45 connector to a hub port using a Category 5 twisted pair LAN cable.



IMPORTANT

You cannot use the machine as a repeater, bridge, or gateway.

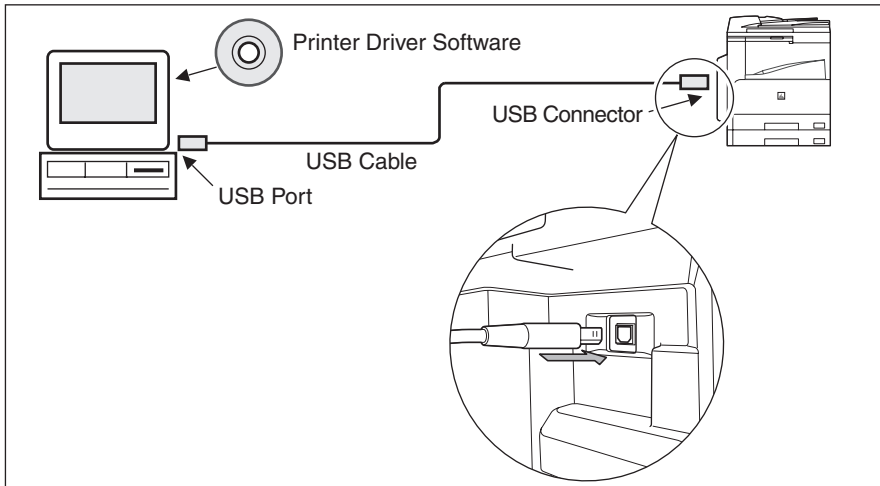


NOTE

- The machine can automatically detect the type of Ethernet (10Base-T or 100Base-TX).
- If you are using a mixed 10Base-T/100Base-TX environment, devices on the network (hubs, routers, etc.) must support the mixed environment. For more information, consult your local authorized Canon dealer.
- After connecting the network cable, perform the following operations. (For more information, see the relevant descriptions.)
 - Set the date and time, and System Manager settings. (See Chapter 5, "System Manager Settings," in the *Reference Guide*.)
 - Set the network settings. (See the *Network Guide*.)
 - Install a printer driver if necessary. (See Chapter 2, "Installing Software.")

Connecting to a USB Interface

You can connect the machine to a computer with a USB port via a USB cable. The machine is USB 2.0 High-Speed compatible. The printer drivers, USB class driver, and utility that matches the operating system on your computer will be installed. For more information on installing the printer driver and the utility software included on the CD-ROM, see Chapter 2, “Installing Software.”



CAUTION

If you connect or disconnect the USB cable while the main power switch is ON, do not touch the metal parts around the connector, as this may result in electrical shock.

**IMPORTANT**

- Do not connect or disconnect the USB cable in the following situations, as it may cause your computer or the machine to operate poorly:
 - When installing the printer driver
 - When the computer is booting up
 - When printing
- If you disconnect the USB cable with the computer or machine's main power switch ON, always wait at least five seconds before reconnecting the cable. Immediately reconnecting the cable may cause your computer or machine to operate poorly.
- When the machine is connected to a personal computer via the USB cable, you will not be able to use some of the utilities. (See Chapter 2, "Installing Software.")

**NOTE**

- If the machine is connected to a computer with a USB cable, you can print a document from your computer using the printer driver, or send a fax from your computer using the fax driver.
- You cannot specify the computer connected to the machine through a USB connection as a destination of the Send jobs or forwarding jobs. Also, with that computer, you cannot use the Remote UI.
- The appropriate USB interface differs depending on the operation system of the connected computer as follows. For more information, consult your local authorized Canon dealer or call the Canon Support Center at 1-800-828-4040.
 - Windows 98/Me: USB Full-Speed (USB 1.1 equivalent)
 - Windows 2000/XP/Server 2003: USB 2.0 Hi-Speed/USB Full-Speed (USB 1.1 equivalent)

Installing Software

2

CHAPTER

This chapter describes how to install the software on the User Software CD-ROMs (CD-ROMs) supplied with your machine.

User Software	2-2
UFR II Printer Kit/Super G3 FAX Board CD-ROM	2-2
PCL Printer Kit CD-ROM	2-3
System Requirements	2-3
Software Installation Instructions	2-4
Installing a Printer and/or Fax Driver	2-4
Installing Canon Font Manager	2-18
Installing NetSpot Device Installer	2-19
Installing Canon LPR2	2-19

User Software

This section provides a list of the contents of the User Software CD-ROMs, along with a brief explanation of which software you should install.

2

UFR II Printer Kit/Super G3 FAX Board CD-ROM

The CD-ROMs contain the following software and documents:

■ **UFR II Printer Driver**

Install this software to use the UFR (Ultra Fast Rendering) print functions of the machine.

■ **USB Class Driver**

Install this software to connect your computer and the machine via a USB cable.

■ **Canon LPR2**

Install this software to print in the TCP/IP network environment.

■ **NetSpot Device Installer**

Install this software to specify the initial settings for various devices connected to a network from your computer.

■ **UFR II Driver Guide**

Read this guide to learn how to install and use the UFR II printer driver.

■ **Fax Driver**

Install this software to use the machine to transmit jobs as a facsimile.

■ **Fax Driver Guide**

Read this guide to learn how to install and use the Fax driver, and how to design cover sheets for outgoing fax jobs.

PCL Printer Kit CD-ROM

■ PCL Printer Driver

Install this software to use the PCL (Printer Control Language) print functions of the machine.

■ USB Class Driver

Install this software to connect your computer and the machine via a USB cable.

■ Canon Font Manager

Install this software to manage fonts and to view them accurately on your computer.

■ PCL Driver Guide

Read this guide to learn how to install and use the PCL printer driver.

System Requirements

These CD-ROMs are designed for use with Windows 98/Me, Windows NT, or Windows 2000/XP/Server 2003 computers.

Software Installation Instructions

This section describes how to install the printer driver and other software included on the CD-ROMs.

Installing a Printer and/or Fax Driver



IMPORTANT

- Do not connect the USB cable before installing the software. If you connect the USB cable before installing the software and the Found New Hardware Wizard screen appears, click [Cancel].
- For Windows NT/2000/XP/Server 2003, log on as Administrator to install the software.
- Make sure the machine is turned on before connecting the USB cable.



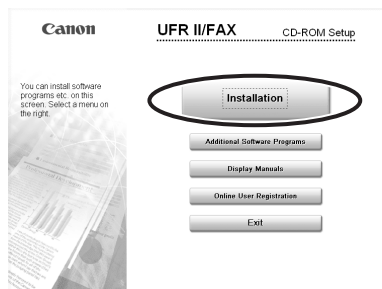
NOTE

- The UFR II printer driver is not available for Windows NT.
- In Windows NT, you cannot print and send a fax from your computer through a USB connection.
- In Windows NT, you cannot use the Installer to install the PCL printer and fax drivers. Double-click the [Setup.exe] icon in the PCL or FAX\us_eng folder on the CD-ROMs to install the drivers.
- You cannot use the Installer to install the fax driver through the USB connection. Double-click the [Setup.exe] icon in the FAX\us_eng folder on the UFR II Printer Kit/Super G3 FAX Board CD-ROM to install the driver.
- In a USB environment, you cannot set up the printer configuration automatically or use the Job Accounting feature.
- The following procedure is an example using the Installer on the UFR II Printer Kit/Super G3 FAX Board CD-ROM.

Standard Installation

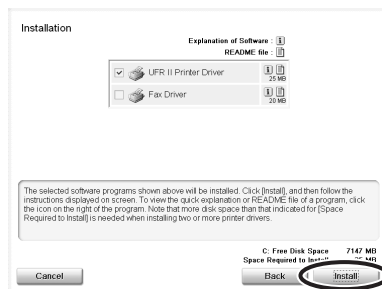
1 Insert the UFR II Printer Kit/Super G3 FAX Board or PCL Printer Kit CD-ROM into the CD-ROM drive.

2 Click [Installation].

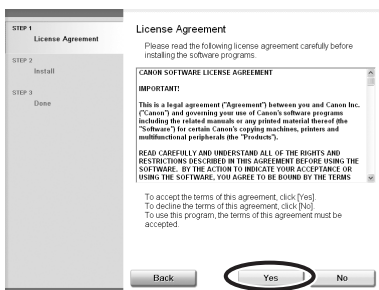


If the CD-ROM Setup screen is not displayed, on the Windows desktop double-click [My Computer]. Open the CD-ROM icon, then double-click [MInst (MInst.exe)].

3 Select the driver(s) you want to install → click [Install].

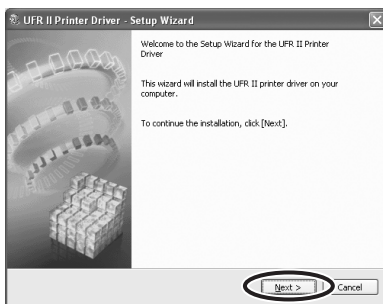


4 Read the printer driver license agreement carefully. If you agree to the terms, click [Yes].

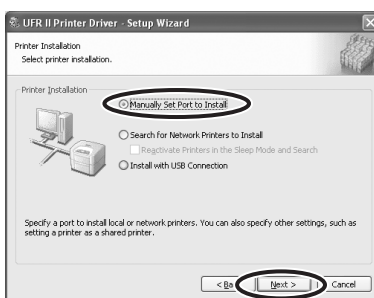


The Install screen is displayed for a while.

5 Click [Next].



6 Select [Manually Set Port to Install] → click [Next].

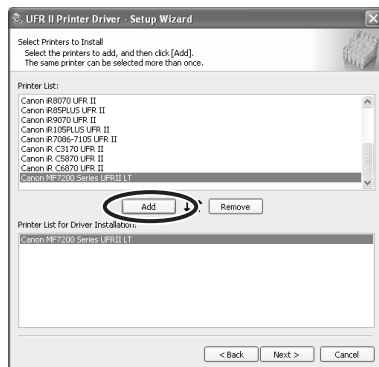


7 Click [Next].



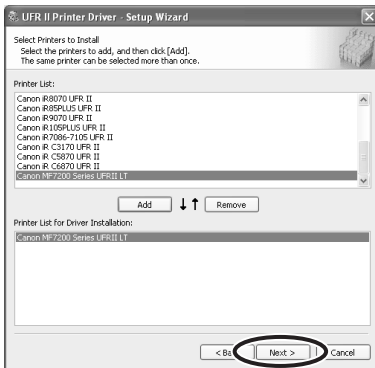
[Process to Install Printer Driver] in this dialog box appears if drivers that can be installed with this Installer are already installed.

8 Select the printer driver(s) you want to install from [Printer List] → click [Add].

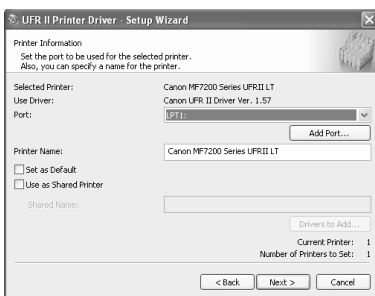


The printer driver(s) you selected is added to [Printer List for Driver Installation].

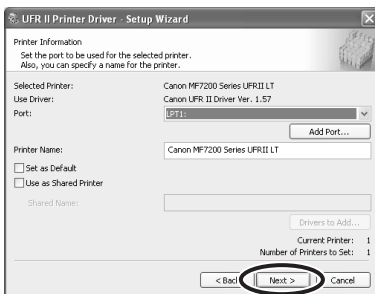
9



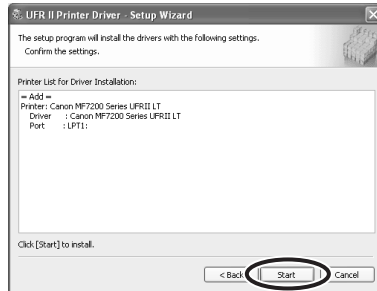
10



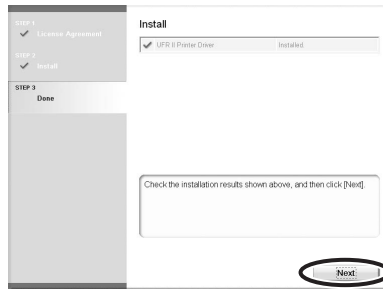
11



- 12** Verify the installation settings → click [Start] → follow the instructions on the screen.



- 13** After the files are copied, click [Next].



Repeat the steps from 5 if you have selected the two drivers in step 3.

- 14** Click [Exit] to finish the installation.

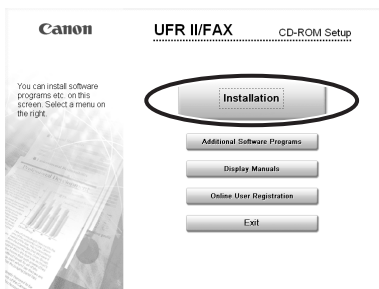
We recommend that you select [Restart Computer Now (Recommended)] → click [Restart].

You have now completed installation.

Dynamic Installation

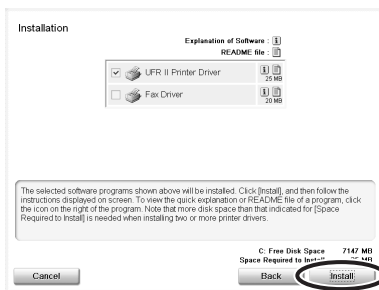
1 Insert the UFR II Printer Kit/Super G3 FAX Board or PCL Printer Kit CD-ROM into the CD-ROM drive.

2 Click [Installation].

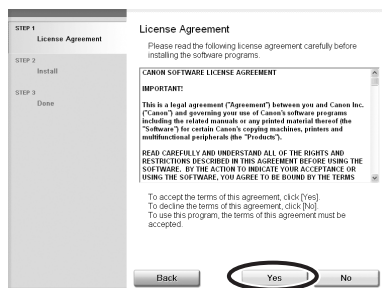


If the CD-ROM Setup screen is not displayed, on the Windows desktop double-click [My Computer]. Open the CD-ROM icon, then double-click [MInst (MInst.exe)].

3 Select the driver(s) you want to install → click [Install].

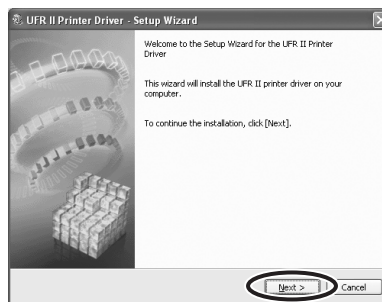


- 4** Read the printer driver license agreement carefully. If you agree to the terms, click [Yes].

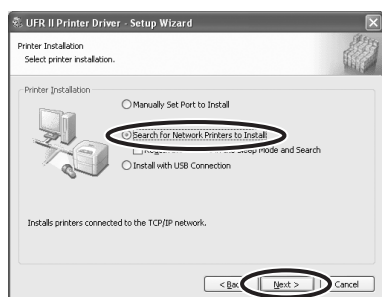


The Install screen is displayed for a while.

- 5** Click [Next].



- 6** Select [Search for Network Printers to Install] → click [Next].

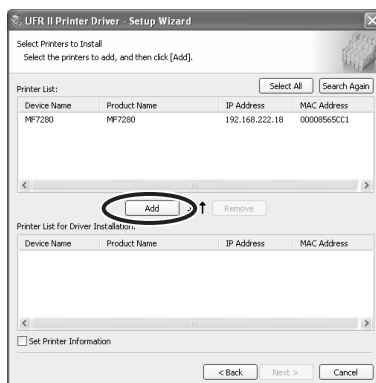


7 Click [Next].



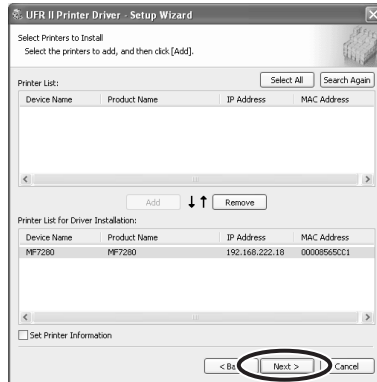
[Process to Install Printer Driver] in this dialog box appears if drivers that can be installed with this Installer are already installed.

8 Select the printer driver(s) you want to install from [Printer List] → click [Add].

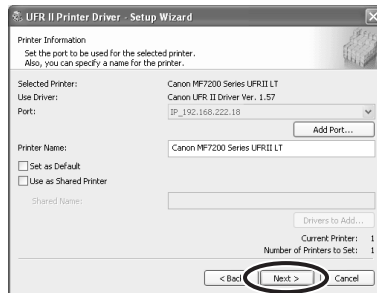


The printer driver(s) you selected is added to [Printer List for Driver Installation].

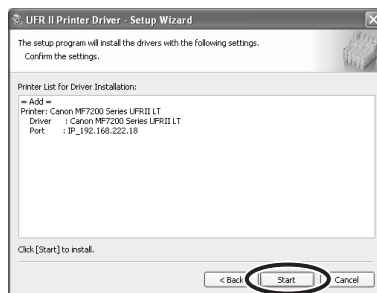
9 Click [Next].



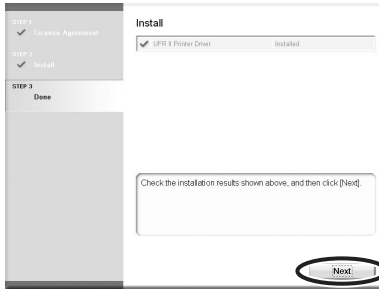
10 Enter a printer name in [Printer Name] if necessary → click [Next].



11 Verify the installation settings → click [Start] → follow the instructions on the screen.



12 After the files are copied, click [Next].



Repeat the steps from 5 if you have selected the two drivers in step 3.

13 Click [Exit] to finish the installation.

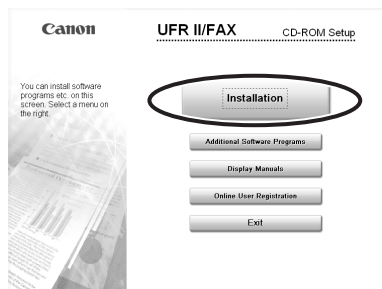
We recommend that you select [Restart Computer Now (Recommended)] → click [Restart].

You have now completed installation.

USB Installation

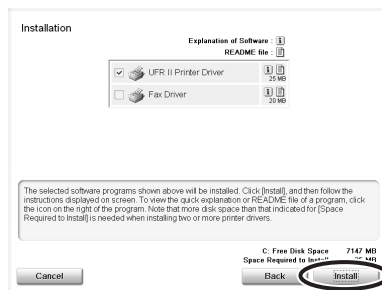
1 Insert the UFR II Printer Kit/Super G3 FAX Board or PCL Printer Kit CD-ROM into the CD-ROM drive.

2 Click [Installation].

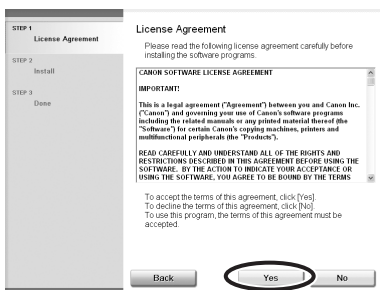


If the CD-ROM Setup screen is not displayed, on the Windows desktop double-click [My Computer]. Open the CD-ROM icon, then double-click [MInst (MInst.exe)].

3 Select the driver(s) you want to install → click [Install].

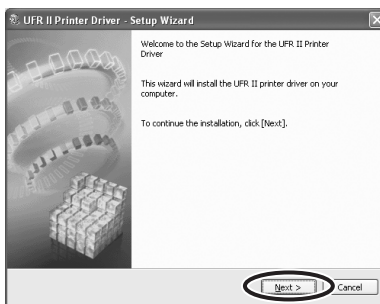


4 Read the printer driver license agreement carefully. If you agree to the terms, click [Yes].

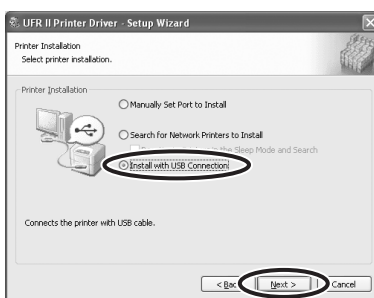


The Install screen is displayed for a while.

5 Click [Next].



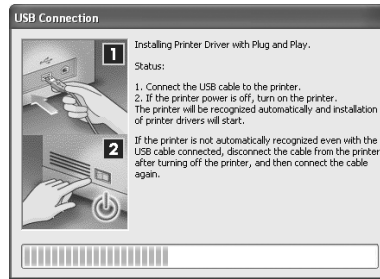
6 Select [Install with USB Connection] → click [Next].



7 Click [Yes] in the message box to proceed.

File copying starts.

8 When the message box below appears after the files are copied, connect the machine and your computer with a USB cable.



NOTE

If you are using Windows XP, select [Install Software Automatically (Recommended)] in the dialog box displayed next →click [Next].

9 Click [Exit] to finish the installation.

We recommend that you select [Restart Computer Now (Recommended)] → click [Restart].

You have now completed installation.

Installing Canon Font Manager

Font Manager is a comprehensive program that helps you manage your fonts in Microsoft Windows. Follow the procedure below to install this software.



NOTE

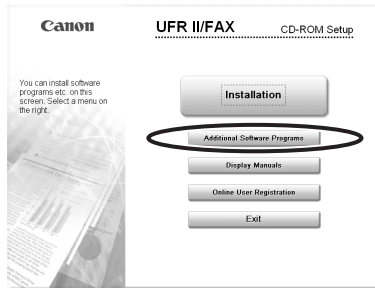
This software is not available in a USB environment.

2

- 1** Insert the PCL Printer Kit CD-ROM into the CD-ROM drive.
- 2** Double-click the [My Computer] icon on the Desktop.
- 3** Double-click the [CD-ROM] icon → open the Canonfm\english folder.
- 4** Double-click the [Setup.exe] icon.
- 5** Follow the instructions on the screen to finish the installation.

Installing NetSpot Device Installer

NetSpot Device Installer enables you to set up the machine for network operations. You can use this software with or without installing it on your computer. For details, see the Readme file and online help for this software by clicking [Additional Software Programs] in the CD-ROM Setup screen on the UFR II Printer Kit/Super G3 FAX Board CD-ROM.



NOTE

This software is not available in a USB environment.

Installing Canon LPR2

Install this software on Windows 98/Me/NT/2000/XP/Server 2003 to print via a TCP/IP network using LPR/Raw. For details on installing and using this software, please refer to the Readme file or *User's Guide* included in the Lprport folder on the UFR II Printer Kit/Super G3 FAX Board CD-ROM.

NOTE

This software is not available in a USB environment.

**CANON INC.**

30-2, Shimomaruko 3-chome, Ohta-ku, Tokyo 146-8501, Japan

CANON U.S.A., INC.

One Canon Plaza, Lake Success, NY 11042, U.S.A.

CANON CANADA INC.

6390 Dixie Road Mississauga, Ontario L5T 1P7, Canada

CANON EUROPA N.V.

Bovenkerkerweg 59-61 P.O. Box 2262, 1180 EG Amstelveen, The Netherlands

CANON FRANCE S.A.

17, quai du Président Paul Doumer 92414 Courbevoie Cedex, France

CANON (U.K.) LTD.

Woodhatch, Reigate, Surrey, RH2 8BF, United Kingdom

CANON DEUTSCHLAND GmbH

Europark Fichtenhain A10, 47807 Krefeld, Germany

CANON ITALIA S.p.A.

Via Milano, 8 - 20097 San Donato Milanese (MI) Italy

CANON LATIN AMERICA, INC.

703 Waterford Way Suite 400 Miami, Florida 33126 U.S.A.

CANON AUSTRALIA PTY. LTD.

1 Thomas Holt Drive, North Ryde, Sydney, N.S.W. 2113, Australia

CANON CHINA CO., LTD.

15F, North Tower, Beijing Kerry Centre, 1 Guang Hua Road, Chao Yang District, 100020, Beijing, China

CANON SINGAPORE PTE. LTD.

1 HarbourFront Avenue #04-01 Keppel Bay Tower, Singapore 098632

CANON HONGKONG CO., LTD.

19/F., The Metropolis Tower, 10 Metropolis Drive, Hunghom, Kowloon, Hong Kong

