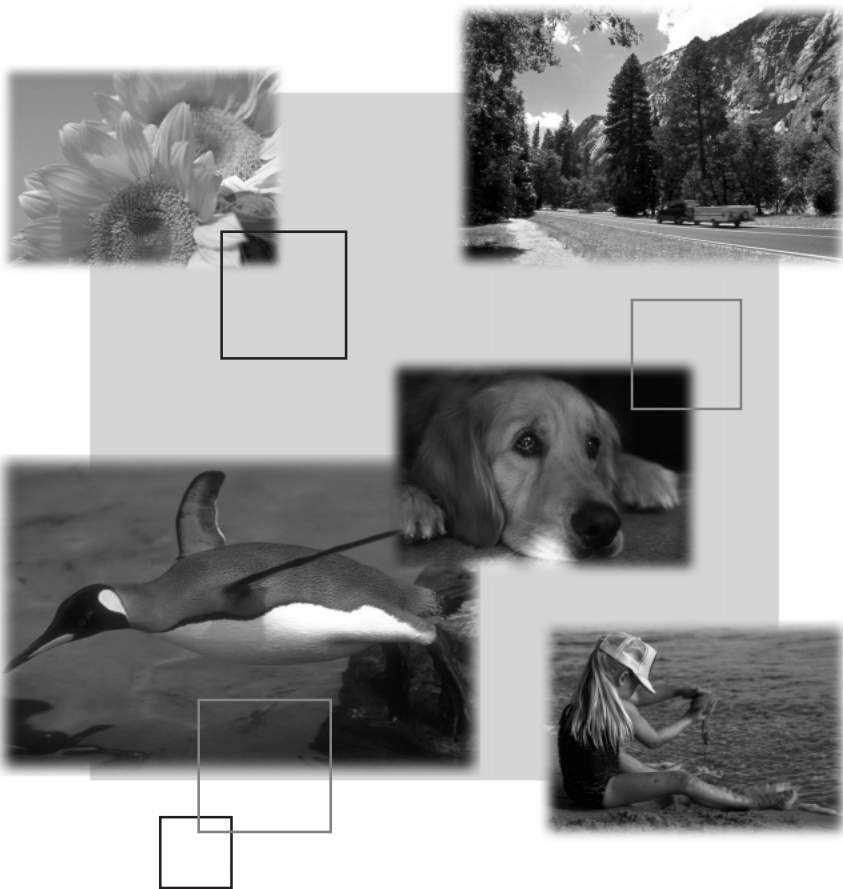


Canon

PowerShot A50

D I G I T A L C A M E R A



Windows

Macintosh

Software Starter Guide

This guide explains the installation method and features of the software for loading and processing images shot with a Canon PowerShot Digital Camera on a computer.

Read the agreement in this Guide before using the software on the CD-ROM in this box. By using the software, you agree to be bound by the terms of the agreement.

READ CAREFULLY BEFORE USING!

CANON SOFTWARE LICENSE AGREEMENT

IMPORTANT - READ THIS AGREEMENT BEFORE USING THE SOFTWARE ON THE CD-ROM IN THIS BOX. BY USING THE SOFTWARE, YOU AGREE TO BE BOUND BY THE TERMS OF THIS AGREEMENT.

THIS CD-ROM ALSO CONTAINS THE ULEAD PHOTOIMPACT 4.2 SOFTWARE (THE "ULEAD SOFTWARE") WHICH IS PRODUCED AND COPYRIGHTED BY ULEAD SYSTEMS, INC. THE TERMS OF THIS AGREEMENT DO NOT APPLY TO USE OF THE ULEAD SOFTWARE. THE TERMS FOR USE OF THE ULEAD SOFTWARE MAY BE FOUND SEPARATELY IN THE FILE APPEARING ON THE CD-ROM IN THIS BOX.

This is a license agreement (the "Agreement") between you and Canon Inc. ("Canon").

IF YOU DO NOT AGREE TO THE TERMS AND CONDITIONS OF THIS AGREEMENT, DO NOT USE THE SOFTWARE PROGRAM ON THE CD-ROM AND THE USER MANUAL IN THIS BOX (COLLECTIVELY, THE "SOFTWARE") AND RETURN THE SOFTWARE WITHIN 30 DAYS FROM THE DATE OF PURCHASE TO YOUR POINT OF PURCHASE FOR A REFUND.

In consideration of the right to use the SOFTWARE, you agree to abide by the terms and conditions of this Agreement.

1. **LICENSE:** Canon grants you the non-exclusive right to use the SOFTWARE only on a single computer. You may physically transfer the SOFTWARE from one computer to another provided that the SOFTWARE is used on only one computer at a time. You shall not install or use the SOFTWARE on a network, multiple CPU, multiple site arrangement, or any other hardware configuration where the SOFTWARE is accessible to more than one CPU or to more than one user.

YOU SHALL NOT ASSIGN, SUBLICENSE, RENT, LEASE, LOAN, CONVEY OR OTHERWISE USE, TRANSFER, COPY, TRANSLATE, CONVERT TO ANOTHER PROGRAMMING LANGUAGE, ALTER, MODIFY, DECOMPILE OR DISASSEMBLE THE SOFTWARE, IN WHOLE OR IN PART, EXCEPT AS EXPRESSLY PROVIDED IN THIS AGREEMENT.

2. **BACK-UP COPY:** You may make one copy of the SOFTWARE solely for back-up purposes, or copy the SOFTWARE onto the permanent storage device (e.g. a hard disk) of your computer and retain the original for back-up purposes. Any other copying of the SOFTWARE is a violation of this Agreement. You must reproduce and include the copyright notice on the back-up copy.
3. **SUPPORT AND UPDATES:** Canon is not responsible for providing maintenance or support for use of the SOFTWARE. No updates, fixes or support will be made available for the SOFTWARE.
4. **LIMITED WARRANTY AND LIMITATION OF LIABILITY:** It is your responsibility to choose, maintain and match the hardware and software components of your computer system. Thus Canon does not guarantee uninterrupted service or correction of errors or that the functions or performance of the SOFTWARE will meet your requirements. THE SOFTWARE IS LICENSED ON AN "AS IS" BASIS AND WITHOUT WARRANTY OF ANY KIND. The CD-ROM storing the SOFTWARE is warranted only against defective material under normal use for a period of ninety (90) days after purchase from an authorized Canon dealer as evidenced by your sales receipt. Your sole remedy for a defective CD-ROM shall be replacement of the same without charge when returned by you at your expense to your point of purchase and proven to be defective upon inspection. The Replacement CD-ROM will be warranted for the remainder of the original ninety (90) day warranty period of the defective CD-ROM. The limited warranty does not apply if the failure of the CD-ROM resulted from accident, abuse or misapplication of the SOFTWARE and shall not extend to anyone other than the original user of the SOFTWARE.

EXCEPT AS SPECIFICALLY SET FORTH IN THIS PARAGRAPH 4, CANON, CANON'S SUBSIDIARIES, DISTRIBUTORS AND DEALERS DISCLAIM ALL WARRANTIES, EXPRESS OR IMPLIED, INCLUDING ANY WARRANTY OF MERCHANTABILITY OR FITNESS FOR A PARTICULAR PURPOSE, WITH RESPECT TO THE SOFTWARE.

NONE OF CANON OR ANY OF CANON'S SUBSIDIARIES, DISTRIBUTORS OR DEALERS IS LIABLE FOR ANY DAMAGES HOWSOEVER CAUSED, INCLUDING WITHOUT LIMITATION, DIRECT, CONSEQUENTIAL OR INCIDENTAL LOSS OR DAMAGE INCLUDING LOSS OF PROFITS, EXPENSE OR INCONVENIENCE HOWSOEVER CAUSED OR ARISING OUT OF THE SOFTWARE OR THE USE THEREOF.

NONE OF CANON, OR ANY OF CANON'S SUBSIDIARIES, DISTRIBUTORS OR DEALERS SHALL HAVE ANY OBLIGATION TO INDEMNIFY YOU AGAINST ANY CLAIM OR SUIT BROUGHT BY A THIRD PARTY ALLEGING THAT THE SOFTWARE OR THE USE THEREOF INFRINGES ANY INTELLECTUAL PROPERTY OF SUCH THIRD PARTY.

5. **TERM:** This Agreement is effective upon your using the SOFTWARE and remains in effect until expiration of all copyright interests in the SOFTWARE unless earlier terminated. You may terminate this Agreement by destroying the SOFTWARE. This Agreement will also terminate without notice to you if you fail to comply with any of the terms of this Agreement and you must then promptly return the SOFTWARE. In addition, Canon may enforce its other legal rights.
6. **U.S. GOVERNMENT RESTRICTED RIGHTS NOTICE:** The SOFTWARE is provided with restricted rights. Use, duplication or disclosure is subject to restrictions as set forth in either subparagraph (c) (1) (ii) of the Rights in Technical Data and Computer software clause at DFARS 252.227-7013 or subparagraph (c) (1) and (2) of the Commercial Computer Software Restricted Rights Clause at FAR 52.227-19, as applicable.
7. **SEVERABILITY:** In the event that any provision of this Agreement is declared or found to be illegal by any court or tribunal of competent jurisdiction, such provision shall be null and void with respect to the jurisdiction of that court or tribunal and all the remaining provisions of this Agreement shall remain in full force and effect.
8. **CONTROLLING LAW:** The terms of this Agreement as it relates to purchases of the Software in the United States of America shall be governed and construed in all respects in accordance with the laws and regulations of the State of New York, without reference to choice of law principles. The terms of this Agreement as it relates to purchases of the Software in Canada shall be governed by the laws of the province of Ontario.
9. **OWNERSHIP:** All rights, including but not limited to copyrights and trade secret rights, to the SOFTWARE belong to Canon, its affiliated corporations and third party licensors. Your use of the SOFTWARE is subject to the United States, Canada and other applicable copyright and trademark laws and nothing in this Agreement constitutes a waiver of the rights of Canon, its affiliated corporations and third party licensors under such laws. Nothing contained in Paragraph 1 shall be construed to give Canon any ownership rights in any images, graphics or textual material that you save in connection with the Software.
10. **ACKNOWLEDGEMENT:** BY USING THE SOFTWARE, YOU ACKNOWLEDGE THAT YOU HAVE READ THIS AGREEMENT, UNDERSTOOD IT, AND AGREE TO BE BOUND BY ITS TERMS AND CONDITIONS. YOU ALSO AGREE THAT THIS AGREEMENT IS THE COMPLETE AND EXCLUSIVE STATEMENT OF AGREEMENT BETWEEN YOU AND CANON CONCERNING THE SUBJECT MATTER HEREOF AND SUPERSEDES ALL PROPOSALS OR PRIOR AGREEMENTS, VERBAL OR WRITTEN, AND ANY OTHER COMMUNICATIONS BETWEEN THE PARTIES RELATING TO THE SUBJECT MATTER HEREOF. NO AMENDMENT TO THIS AGREEMENT SHALL BE EFFECTIVE UNLESS SIGNED BY A DULY AUTHORIZED OFFICER OF CANON.

Introduction

Thank you for purchasing a Canon PowerShot A50 digital camera.

The PowerShot A50 Solution Disk supplied in your package contains various software programs that can be used to load, organize, retouch and process images shot with your PowerShot A50. We invite you to use this guide and its companion Hardware Guide to maximize your enjoyment of the new world of high-quality digital imaging.

For instructions on using the Windows® and Macintosh operating systems, please refer to the manuals that accompanied them.

Disclaimer

While every effort has been made to ensure that the information contained in this Guide is accurate and complete, no liability can be accepted for any errors or omissions. Canon Inc. reserves the right to change the specifications of the hardware and software described herein at any time without prior notice.

No part of this Guide may be reproduced, transmitted, transcribed, stored in a retrieval system, or translated into any language in any form, by any means without prior written permission of Canon Inc.

Canon Inc. makes no warranties for damages resulting from corrupted or lost data due to a mistaken operation or malfunction of the camera, the software, the CompactFlash™ cards (CF cards), personal computers, peripheral devices, or use of non-Canon CF cards.

Trademark Acknowledgments

- Canon and PowerShot are trademarks of Canon Inc.
- Adobe, the Adobe logo and Acrobat Reader are trademarks of Adobe Systems Incorporated.
- CompactFlash is a trademark of SanDisk Corporation.
- IBM is a registered trademark of International Business Machines Corporation.
- Macintosh, Power Macintosh and QuickTime are trademarks of Apple Computer Inc. in the United States and other countries.
- Microsoft, Windows and Windows NT are registered trademarks of Microsoft Corporation in the United States and other countries.
- Photolmpact is a trademark of Ulead Systems, Inc.
- Other names and products not mentioned above may be trademarks or registered trademarks of their respective companies.

Copyright © 1999 Canon Inc. All rights reserved.

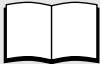
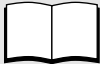
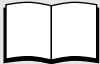
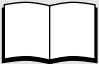








Loading Images onto a Windows Computer

This chapter introduces the software contained on the PowerShot A50 Solution Disk, explaining how to install each program and load images onto the computer. For instructions on using a PC card slot or PC card reader to load images, refer to the respective on-screen guides (p. 20).

Bundled Software and Guides	4
Computer System Requirements	5
Installing the Software	6
Connecting to the Computer	9
Loading Images	
Loading Images with ZoomBrowser	10
Loading Images with TimeTunnel	12
Loading Images with PhotoStitch	14
Handling Images with SlideShowMaker	16
Loading Images with Ulead PhotoImpact	18
Viewing On-Screen Guides	20
Opening the PhotoImpact User Guide	21

The interaction of your particular computer system with the camera may result in the display of some messages or dialogs not described herein. Please consult the on-screen guides and help files accompanying each software program for assistance.

Bundled Software and Guides

Action	Search and Organize Images	Display Images Chronologically	Merge Images into Panoramas	Edit Camera Slide Shows
Programs to Install	ZoomBrowser + *TWAIN Driver ** Acrobat Reader	TimeTunnel ** Acrobat Reader	PhotoStitch ** Acrobat Reader	SlideShowMaker ** Acrobat Reader
Where to Look for Instructions	 Pages 10-11 of this Guide	 Pages 12-13 of this Guide	 Pages 14-15 of this Guide	 Pages 16-17 of this Guide
Guides	 Using ZoomBrowser (Page 20)	 Using TimeTunnel (Page 20)	 Using PhotoStitch (Page 20)	 Using SlideShowMaker (Page 20)
Help Files	 See the Help File	 See the Help File	 See the Help File	 See the Help File

* For instructions on the TWAIN Driver, please refer to the help file.

** Adobe Acrobat Reader must be installed to view on-screen guides in the Portable Document Format (PDF). This program can be installed from the PowerShot A50 Solution Disk. Click [About the On-Screen Software Guides] and [Install Adobe Acrobat Reader] to begin the installation (p. 6).

Computer System Requirements

Please install the software on a computer meeting the following system requirements.

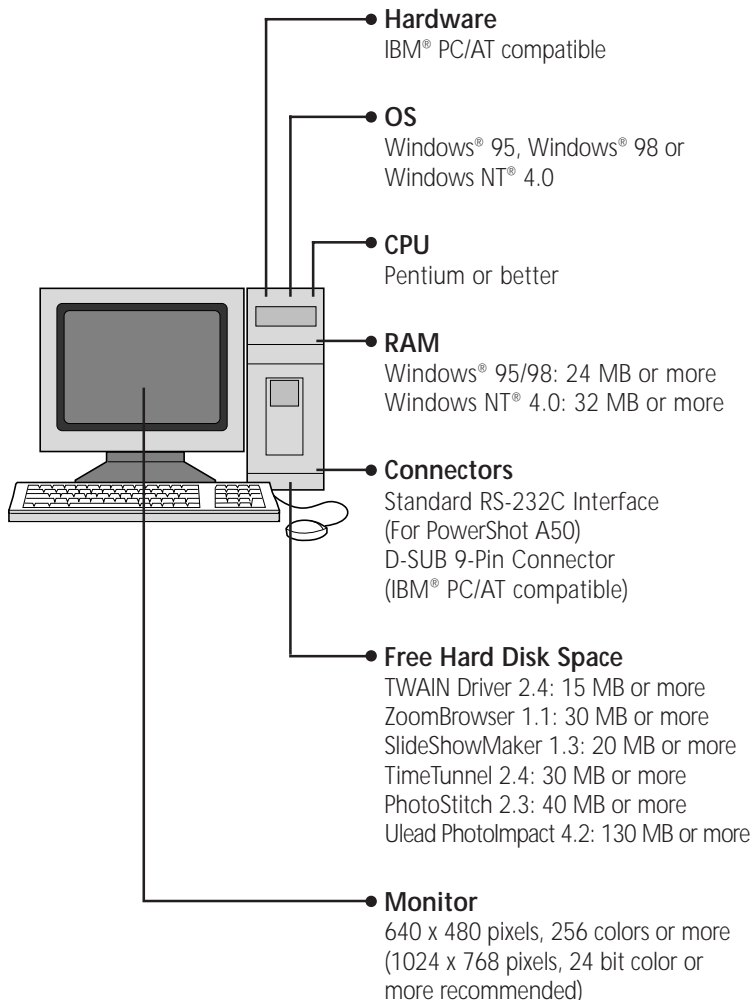
Retouch
Images

PhotoImpact
+
*TWAIN Driver
**Acrobat Reader

Pages 18-19
of this Guide

PhotoImpact
User Guide
(Page 21)

See the
Help File

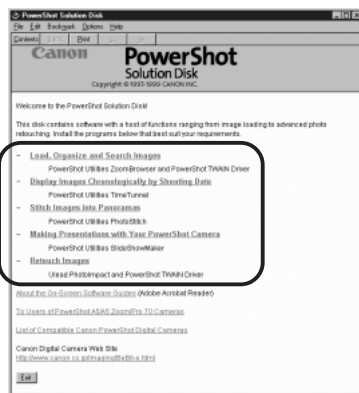


- A CD-ROM drive is required to install the software.
- QuickTime 3.0 or higher is required to save images in the QuickTime VR format that have been merged in PhotoStitch.

Installing the Software

1. Start your computer.
2. Place the PowerShot A50 Solution Disk in the CD-ROM drive.
The setup menu will automatically display a list of software.
 - The setup menu will not display if the [Auto Insert Notification] setting is deselected for your CD-ROM drive. Use the following procedures to work around this.
Double-click the [My Computer] icon on the desktop to open it and then the CD-ROM icon. Double-click the [Setup] icon.
3. Click any underlined item.

Click the items with " - " to read about the software.



4. To install a program, carefully read its description and click the corresponding [Install...] button.



- Read the dialog contents carefully and proceed with the installation procedures.

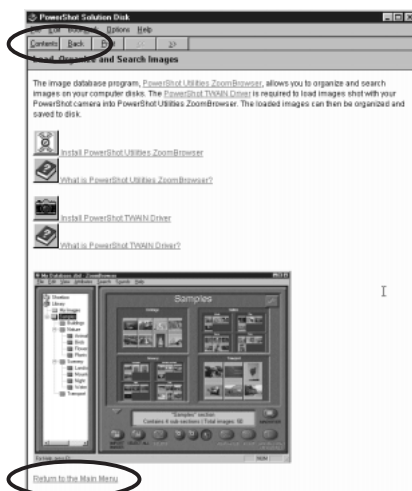
ZoomBrowser Setup Dialog



- Click the [Finish] button when the Setup Complete dialog is displayed.



- Click the [Contents] or [Back] button on the toolbar, or the [Return to the Main Menu] button at the bottom to return to the main menu.



- Repeat steps 3 to 7 for each program that you wish to install.

9. Click the [Exit] button.



10. Remove the PowerShot A50 Solution Disk from the CD-ROM drive.

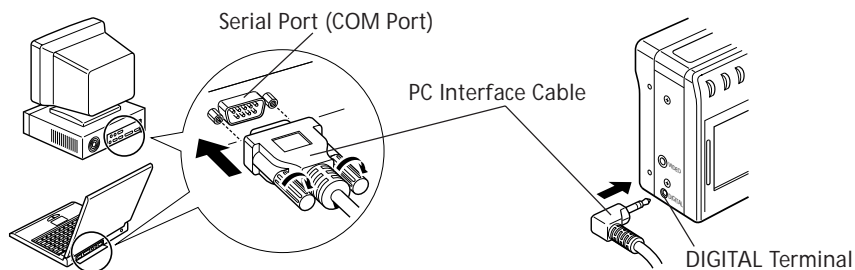
About Uninstalling the Software

You can delete the installed programs by clicking the Windows [Start] menu and selecting [Settings] and [Control Panel]. Double-click the [Add/Remove Programs] icon. ZoomBrowser can also be uninstalled by clicking the [Start] menu and selecting [Programs], [PowerShot Utilities ZoomBrowser] and [ZoomBrowser Uninstall].

Connecting to the Computer

To Load Images onto the Computer by Cable

1. Shut off the computer and turn the camera's Mode Dial to the L (Lock) position.
2. Attach the PC interface cable to a serial port (COM port) on your computer and the DIGITAL terminal on your camera as shown below.

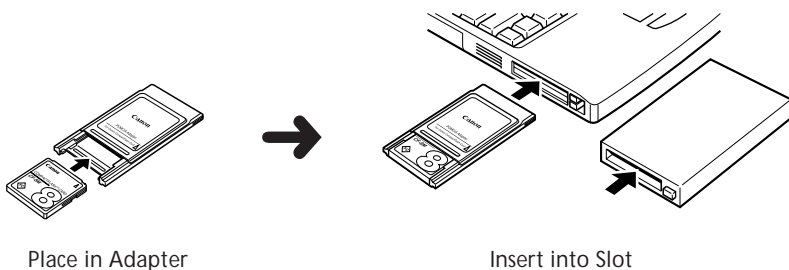


3. Turn on the computer and start Windows.
This completes the setup required to load camera images onto your computer.

To Load Images Directly from a CompactFlash™ Card (CF Card)

Remove the CF card from the camera and insert it directly into an optional CF card reader, or insert it directly into an optional PC card reader or the computer's PC card slot using an optional PCMCIA adapter (PC card adapter) as shown below.

1. Place the CF card from the camera into the PC card adapter.
2. Insert the assembly into the computer's PC card slot or a PC card reader attached to the computer.



Please refer to the documentation for your computer or PC card reader to ascertain whether the computer should be turned off or can be left running when the PC card adapter assembly is inserted into the slot.

Loading Images with ZoomBrowser

ZoomBrowser is a visually based image database program. You can sort, search and display full-sized versions of the images residing on your computer while looking at their thumbnails. The TWAIN Driver is used to load images into ZoomBrowser from your camera.

1. Attach the camera to the computer (p. 9).
2. Turn the camera's Mode Dial to the [PC] position.

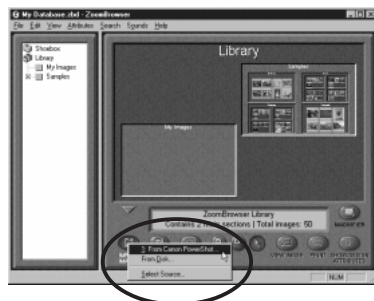
3. Start ZoomBrowser.

Click the Windows [Start] menu and select [Programs], [PowerShot Utilities ZoomBrowser] and [ZoomBrowser].



4. Click the [IMPORT IMAGES] button at the bottom and select [1: From Canon PowerShot].

The TWAIN Driver window will appear.



5. Confirm or select the correct camera model and communication settings (communications port and baud rate).

- Confirm that [PowerShot A50] is showing in the Camera Model list box. If it is not, click the list box arrow and select it.
- Click the [Communication Settings] button to display the Communication Settings dialog. Select the COM port to which the interface cable is connected. If you are not sure, click the [Detect] button. Select the [115.2K] baud rate (transmission speed) unless you have trouble establishing a connection. If you have trouble, try progressively slower speeds.



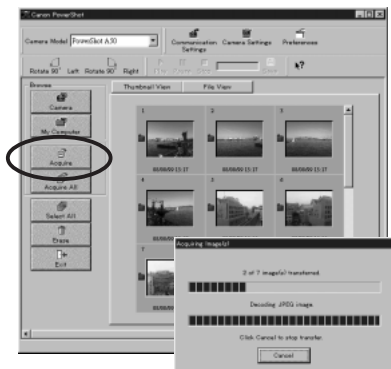
6. Click the [Camera] button.

- If you are loading images from a CF card in a PC card slot, select the [My Computer] button instead (p. 9).
- The Communication Settings dialog may appear the first time you use ZoomBrowser. Confirm that the settings are set according to the instructions in Step 5.
- If images have been recorded in both the "Design rule for Camera File system format" and the CIFF format on the same CF card, the Select Folder dialog may also appear. To load "Design rule for Camera File system format" images, select the DCIM folder. To load CIFF images, select the DC97 folder.



7. Select the images for loading and click the [Acquire] button.

- To select all the images in the folder, click the [Select All] button.
- The acquired images will be temporarily stored in ZoomBrowser's Shoebox.



8. Click the [Exit] button to return to the ZoomBrowser window.

9. Drag and drop the thumbnails of the acquired images from the Shoebox to the various sections of your choice.

- To create a new section, click the [File] menu and select [New Section]. Input the new section name in the box and click the [OK] button.



Thumbnail

Refer to the on-screen guide, Using ZoomBrowser, for instructions on creating new sections and other procedures (p. 20).

Loading Images with TimeTunnel

TimeTunnel is an image browsing program. Registered images are displayed in tunnel files in chronological order using the shooting date and time. You can view your images as if they were scrolling past you in a time tunnel.

1. Attach the camera to the computer (p. 9).

2. Turn the camera's Mode Dial to the [PC] position.

3. Start TimeTunnel.

Click the Windows [Start] menu and select [Programs], [PowerShot Utilities TimeTunnel] and [TimeTunnel 2.4].



4. A dialog will ask if you wish to view the Using TimeTunnel guide.

Click the [Yes] button to view it or the [No] button to proceed directly to the program.

5. Confirm or select the correct camera model and communication settings (communications port and baud rate).

- To select the camera model, click the [File] menu and select [Connection Settings] and [Select Camera Model]. Confirm that [PowerShot A50] is highlighted in the list box. If not, select it.
- To select the communication settings, click the [File] menu and select [Connection Settings] and [Communication Settings] to display the Communication Settings dialog. Select the COM port to which the interface cable is connected. If you are not sure, click the [Detect] button. Select the [115.2K] baud rate (transmission speed) unless you have trouble establishing a connection. If you have trouble, try progressively slower speeds.

6. Click the [Connect to Camera] button.

The Camera Model and Communication Settings dialogs may automatically appear the first time you use TimeTunnel. In this case, confirm the settings as explained in Step 5.



7. Select [Connect to Camera] and click the [OK] button.

A connection to the camera will open and the camera images will display on the monitor.

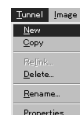
- If you are loading images from a CF card in a PC card slot, select the [Connect to Computer] option instead (p. 9).



Please note that the images have not been saved onto the computer yet with these steps.

8. Click the [Tunnel] menu and select [New].

The Update Thumbnail dialog will display.



9. Click the [OK] button.

The icon of the new tunnel file you created will display at the bottom right of the window.



10. Select the images you wish to load by clicking on them.

- To select all the images on the camera's CF card, click the [Select All] button.



11. Click the [Acquire] button.

The selected images will load onto the computer.



Refer to the on-screen guide, Using TimeTunnel, for further instructions (p. 20).

Loading Images with PhotoStitch

PhotoStitch is a program for merging images into panoramas. Images can be merged horizontally, vertically, in matrices or in 360-degree strips. It is easy to shoot images for merging using the PowerShot A50's Stitch Assist mode. The following procedures explain how to load and merge images shot in Stitch Assist mode.

1. Attach the camera to the computer (p. 9).

2. Turn the camera's Mode Dial to the [PC] position.

3. Start PhotoStitch Camera Direct.

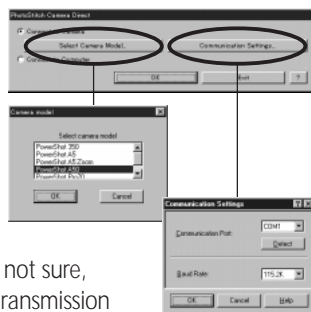
- Click the Windows [Start] menu and select [Programs], [PowerShot Utilities PhotoStitch] and [PhotoStitch Camera Direct 2.3].
- To merge images already residing on your computer, select [PhotoStitch 2.3] instead of PhotoStitch Camera Direct.



4. A dialog will ask if you wish to view the Using PhotoStitch guide. Click the [Yes] button to view it or the [No] button to proceed directly to the program.

5. Confirm or select the correct camera model and communication settings (communications port and baud rate).

- Click the [Select Camera Model] button to display the Camera Model dialog. Confirm that [PowerShot A50] is highlighted in the list box. If it is not, select it.
- Click the [Communication Settings] button to display the Communication Settings dialog. Select the COM port to which the interface cable is connected. If you are not sure, click the [Detect] button. Select the [115.2K] baud rate (transmission speed) unless you have trouble establishing a connection. If you have trouble, try progressively slower speeds.



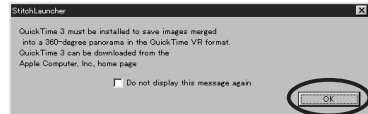
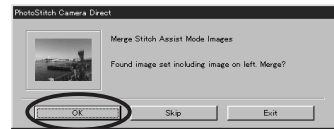
6. Select [Connect to Camera] and click the [OK] button.

- If you are loading images from a CF card in a PC card slot, select the [Connect to Computer] option instead (p. 9).



7. Click the [OK] button once you see an image you wish to merge.

- If the wrong image appears, click the [Skip] button until you see the right image.
- The message to the right will appear if QuickTime 3 is not installed on your computer. Read the message and click the [OK] button.



8. Click the [Merge All] button.

Click the [Next] button as required if you are merging two images at a time or merging in manual mode. See the on-screen guide, Using PhotoStitch, for instructions about merging in manual mode (p. 20).

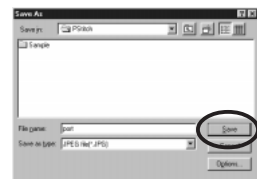


9. Click the [Start] button.

The images will begin to automatically merge. When all have been merged, the [Save As] dialog will appear.



10. Input a file name, select a file format and click the [Save] button.



11. To view the merged image, click the [Yes] button when the "View the Merged Image?" message appears.



Refer to the on-screen guide, Using PhotoStitch, for further instructions (p. 20).

Handling Images with SlideShowMaker

SlideShowMaker is a program that augments the slide show function of your PowerShot A50. You can specify the order in which slides are shown or add images from your computer. The edited slide shows can then be loaded back onto the CF card for viewing with the camera.

1. Attach the camera to the computer (p. 9).

2. Turn the camera's Mode Dial to the [PC] position.

3. Start SlideShowMaker.

Click the Windows [Start] menu and select [Programs], [PowerShot Utilities SlideShowMaker] and [SlideShowMaker 1.3].



4. A dialog will ask if you wish to view the Using SlideShowMaker guide. Click the [Yes] button to view it or the [No] button to proceed directly to the program.

5. Confirm or select the correct camera model and communication settings (communications port and baud rate).

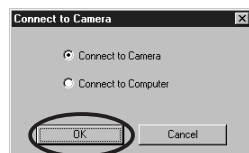
- To select the camera model, click the [File] menu and select [Connection Settings] and [Select Camera Model]. Confirm that [PowerShot A50] is highlighted in the list box. If it is not, select it.
- To select the communication settings, click the [File] menu and select [Connection Settings] and [Communication Settings] to display the Communication Settings dialog. Select the COM port to which the interface cable is connected. If you are not sure, click the [Detect] button. Select the [115.2K] baud rate (transmission speed) unless you have trouble establishing a connection. If you have trouble, try progressively slower speeds.

6. Click the [Connect to Camera] button.



7. Select [Connect to Camera] and click the [OK] button.

- If you are loading images from a CF card in a PC card slot, select the [Connect to Computer] option instead (p. 9).



8. Select a show from slide shows 1 to 3.



9. Drag and drop images to add them to the slide show.

Drag images from the area on the left and drop them into the area on the right.

10. Click the [Save Slide Show to Camera] button.

The slide show will be saved to the CF card in the camera under the name selected in Step 8.



- Use the camera's slide show function to view the slide show.
- Refer to the on-screen guide, Using SlideShowMaker, for further instructions (p. 20).

Adding Images from the Computer to a CF Card in a Camera

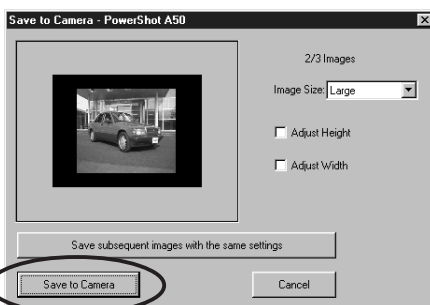
You can insert images from your computer into a slide show on a CF card in a camera by clicking the [Export Image File to Camera] button.



Click the [Export Image File to Camera] button.

Navigate to the appropriate drive and folder, select the image(s) and click the [Open] button.

Specify an image size and image adjustment option, and click the [Save to Camera] button.



Loading Images with Ulead PhotolImpact

Ulead PhotolImpact is an image retouching program featuring advanced special effects. The TWAIN Driver is used to load images into PhotolImpact from your camera.

1. Attach the camera to the computer (p. 9).
2. Turn the camera's Mode Dial to the [PC] position.

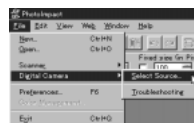
3. Start PhotolImpact.

Click the Windows [Start] menu and select [Programs], [Ulead PhotolImpact 4.2] and [PhotolImpact].

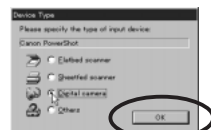


4. Click the [File] menu and select [Digital Camera] and [Select Source].

The Select Source dialog will appear.



5. Click the [Device Type] button, select [Digital Camera] and click the [OK] button.



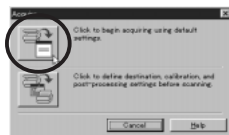
6. Click [Canon PowerShot] and the [Select] button.
Steps 4 to 6 are not required from the second time onward.



7. Click the [File] menu and select [Digital Camera] and [Canon PowerShot].

8. Click the button beside "Click to begin acquiring using default settings."

The TWAIN Driver window will appear.



9. Confirm or select the correct camera model and communication settings (communications port and baud rate).

- Confirm that [PowerShot A50] is showing in the Camera Model list box. If it is not, click the list box arrow and select it.
- Click the [Communication Settings] button to display the Communication Settings dialog. Select the COM port to which the interface cable is connected. If you are not sure, click the [Detect] button. Select the [115.2K] baud rate (transmission speed) for normal circumstances. Select the [115.2K] baud rate unless you have trouble establishing a connection. If you have trouble, try progressively slower speeds.



10. Click the [Camera] button.

- If you are loading images from a CF card in a PC card slot, select the [My Computer] button instead (p. 9).
- The Communication Settings dialog may appear the first time you use PhotolImpact. Confirm that the settings are set according to the instructions in Step 9.
- If images have been recorded in both the "Design rule for Camera File system format" and the CIFF format on the same CF card, the Select Folder dialog may also appear. To load "Design rule for Camera File system format" images, select the DCIM folder. To load CIFF images, select the DC97 folder.

11. Select the images for loading and click the [Acquire] button.

- To select all the images in the folder, click the [Select All] button.



12. Click the [Exit] button to return to the PhotolImpact window.

The acquired images will appear in the PhotolImpact window.

13. Use PhotolImpact to retouch or apply special effects to the images and save them to the hard disk.

Refer to the help file and the on-screen guide, Ulead PhotolImpact User Guide for further instructions (pp. 20-21).

Viewing On-Screen Guides

On-screen Guides in the Portable Document Format (PDF) which start with the word 'Using,' can be accessed by clicking the Windows [Start] button and selecting [Programs], followed by the program group and the guide name. The PhotoImpact 4.2 User Guide (UPI4-MANUAL) can also be found on the PowerShot A50 Solution Disk. Please see the instructions on the next page for viewing it.

To view the electronic files, you must have Adobe Acrobat Reader 3.0 or higher installed on your computer. You can install it from the PowerShot A50 Solution Disk (p. 4).

Hand Tool

Changes the mouse cursor into a hand to move the document around when you are zoomed in. The button remains selected while in use.

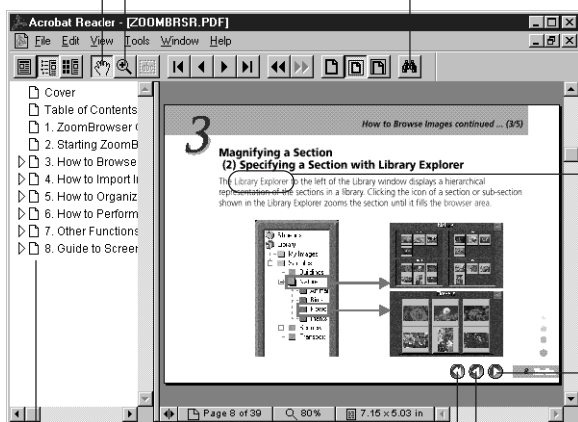
Zoom-In Tool

Zooms in on part of a document. Click the button and then the area you wish to zoom. Hold the [Ctrl] key and click to zoom back out.



Find Dialog

Searches for pages containing text you input in the Find dialog.



Link (Red Buttons)

Jumps to a related page. The cursor changes into a hand over active links. Click the link to jump.

Next Page Button

Previous Page Button

Index

Click an index item to jump to it.

Go Back Button

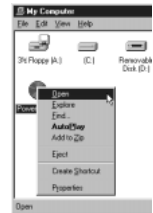
Returns to the page previously displayed.

You may also use the arrow tools on the toolbar and the keyboard cursor keys to page through a document.

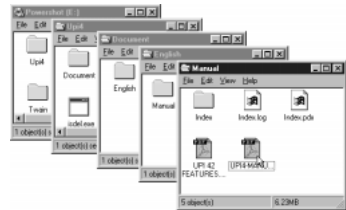
Opening the Ulead PhotoImpact User Guide

The PhotoImpact 4.2 User Guide (UPI4-MANUAL) is contained on the PowerShot A50 Solution Disk. Use the procedures below to view the guide.

1. Place the PowerShot A50 Solution Disk in the CD-ROM drive.
2. Click the [Exit] button at the bottom of the setup menu.
 - This step is not required if the setup menu fails to appear automatically.
3. Double-click the [My Computer] icon on the desktop.
The CD-ROM icon will appear in the window.
4. Right-click the CD-ROM icon and select [Open] from the pop-up menu.
The CD-ROM contents will display.



5. Double-click the following folders in order: UPI4, Document, English, and Manual.



6. Double-click the [UPI4-MANUAL] icon.
The PhotoImpact User Guide will open in Adobe Acrobat Reader.












Loading Images onto a Macintosh Computer

This chapter introduces the software contained on the PowerShot A50 Solution Disk, explaining how to install each program and load images onto the computer. Refer to the respective on-screen guides (p. 34) for instructions about using a PC card slot or PC card reader to load images.

Bundled Software and Guides	24
Computer System Requirements	25
Installing the Software	26
Connecting to the Computer	27
Loading Images	
Loading Images with TimeTunnel	28
Loading Images with PhotoStitch	30
Handling Images with SlideShowMaker	32
Viewing On-Screen Guides	34

The interaction of your particular computer system with the camera may result in the display of some messages or dialogs not described herein. Please consult the on-screen guides and help files accompanying each software program for assistance.

Bundled Software and Guides

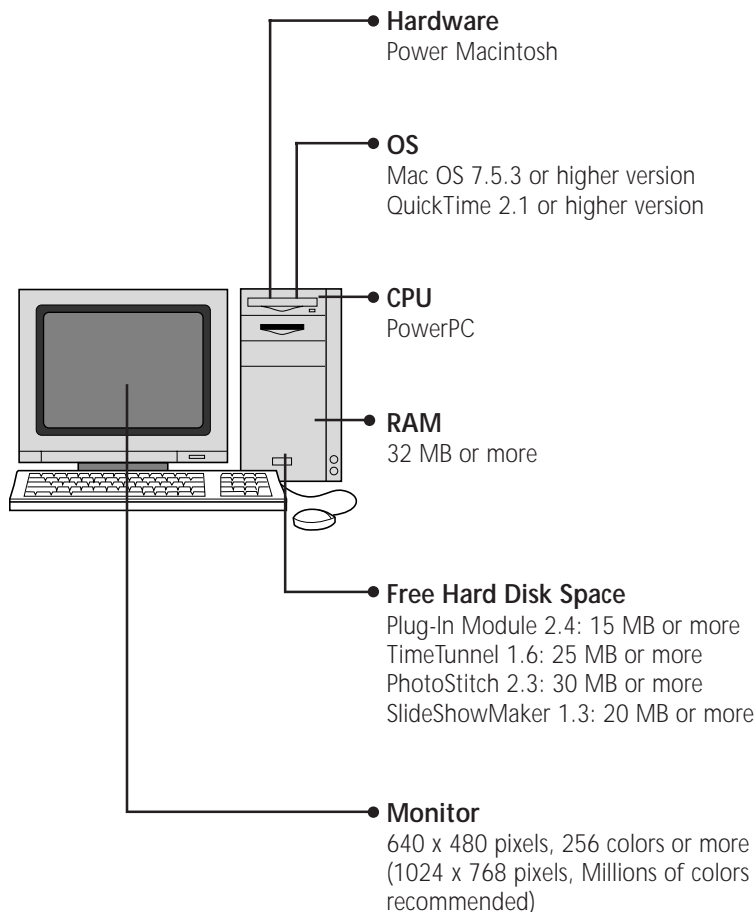
Action	Display Images Chronologically	Merge Images into Panoramas	Edit Camera Slide Shows
Programs to Install	TimeTunnel + *Plug-In Module **Acrobat Reader	PhotoStitch + TimeTunnel + *Plug-In Module **Acrobat Reader	SlideShowMaker **Acrobat Reader
Where to Look for Loading Instructions	 Pages 28-29 of this Guide	 Pages 30-31 of this Guide	 Pages 32-33 of this Guide
Guides	 Using TimeTunnel (Page 34)	 Using PhotoStitch (Page 34)	 Using SlideShowMaker (Page 34)
Help Files	 See the Help File	 See the Help File	 See the Help File

* For instructions on the Plug-In Module, please refer to the on-screen guide, Using Plug-In Module (p. 34).

** Adobe Acrobat Reader must be installed to view on-screen guides in the Portable Document Format (PDF). The program can be installed from the PowerShot A50 Solution Disk. Click [About the On-Screen Software Guides] and [Install Adobe Acrobat Reader] to begin the installation (p. 26).

Computer System Requirements

Please install the software on a Macintosh computer meeting the following system requirements.



- A CD-ROM drive is required to install the software.
- A PC card reader with a USB interface is required on iMac computers and other Macintosh computers not equipped with a printer port or modem port.
- Plug-In Module 2.4 is compatible with Adobe Photoshop Ver. 3.0 or higher.
- QuickTime 3.0 or higher, or QuickTime 2.5 and the QuickTime VR Extension 2.0.1 or higher, is required to save images in the QuickTime VR format that have been merged in PhotoStitch.

Installing the Software

1. Start your Macintosh computer.
2. Place the PowerShot A50 Solution Disk into the CD-ROM drive.
3. Double-click the CD-ROM icon.

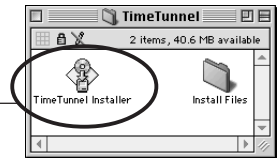


4. Open the folder of a program you wish to install by double-clicking it.
Plug-In Module is automatically copied for use with TimeTunnel.



5. Double-click the installer icon.

Installer Icon for PowerShot Utilities TimeTunnel



6. Read the message in the dialog that appears and click [Install] to proceed with the installation.
7. When the installation is complete, click the [OK] button.
8. Repeat steps 4 to 7 for each program that you wish to install.

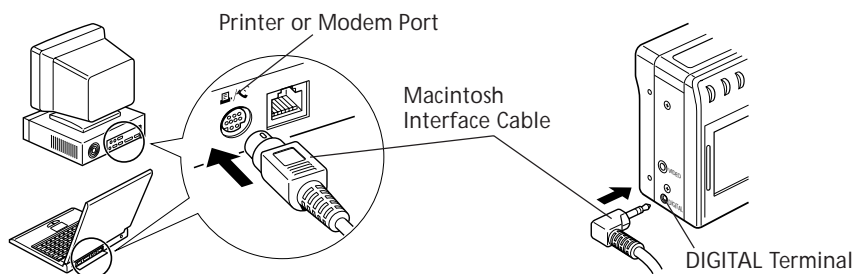
About Uninstalling the Software

You can delete the installed programs by dragging their folders into the Trash. However, be careful not to accidentally delete any of your images that may be in the program folders.

Connecting to the Computer

To Load Images onto the Computer by Cable

1. Shut off your Macintosh computer and turn the camera's Mode Dial to the L (Lock) position.
2. Attach the Macintosh interface cable to the printer port or modem port on your computer and the DIGITAL terminal on your camera as shown below.

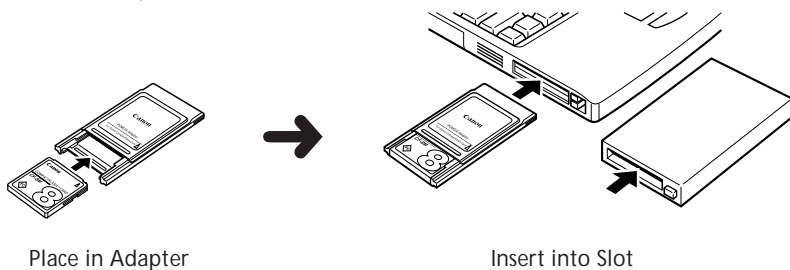


3. Turn on your Macintosh computer.
This completes the setup required to load camera images onto your computer.

To Load Images Directly from a CompactFlash™ Card (CF Card)

Remove the CF card from the camera and insert it directly into an optional CF card reader, or insert it directly into an optional PC card reader or the Macintosh computer's PC card slot using an optional PCMCIA adapter (PC card adapter) as shown below.


1. Place the CF card from the camera into the PC card adapter.
2. Insert the assembly into the Macintosh computer's PC card slot or a PC card reader attached to the computer.



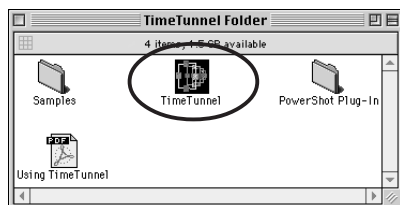
Please refer to the documentation for your Macintosh computer or PC card reader to ascertain whether the computer should be turned off or can be left running when the PC card adapter assembly is inserted into the slot.

Loading Images with TimeTunnel

TimeTunnel is program that displays images in order of their shooting date and time rather as if they are being viewed from within in a time tunnel. The Plug-In Module is used to load images into TimeTunnel from your camera.

1. Attach the camera to your Macintosh computer (p. 27).
2. Turn the camera's Mode Dial to the [PC] position.
3. Open the  (Apple) menu and select the [Chooser]. Set AppleTalk to [Inactive] for the port you are using.
4. Start TimeTunnel.

Double-click the TimeTunnel folder and [TimeTunnel] icon.

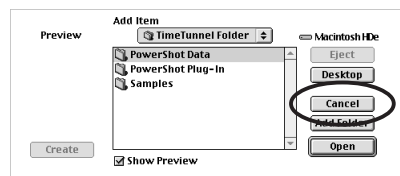


5. A dialog will ask if you wish to view the Using TimeTunnel guide. Click the [Yes] button to view it or the [No] button to proceed directly to the program.

6. The Add Item dialog will appear the first time you use TimeTunnel after installation. Click the [Cancel] button.

- This step is not required from the second time onward.

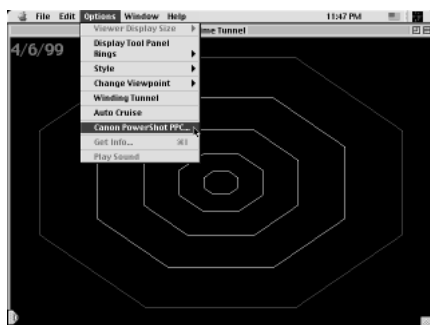
- To load images from the computer, select the folder containing the images and click the [Add Folder] button or the [Open] button.



7. Open the [Options] menu and select [Canon PowerShot PPC].

The Plug-In Module window will appear.

- You do not require Steps 8-9 from the second time onward because the "Connect to camera?" message will display, allowing you to click the [Connect] button to start displaying the images from the camera's CF card.



8. Confirm or select the correct communication settings (communications port and baud rate).

- Click the [Communication Settings] button to display the Communication Settings dialog.
- Select the port to which the interface cable is connected.
- Select the [115.2K] baud rate (transmission speed) unless you have trouble establishing a connection. If you have trouble, try progressively slower speeds.



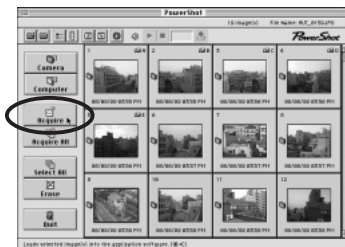
9. Click the [Camera] button.

- If you are loading images from a CF card in a PC card slot, select the [Computer] button instead (p. 27).
- The Communication Settings dialog may automatically appear the first time you use TimeTunnel. In this case, confirm the settings as explained in Step 8.
- If images have been recorded in both the "Design rule for Camera File system format" and the CIFF format on the same CF card, the Folder Selection dialog may also appear. To load "Design rule for Camera File system format" images, select the DCIM folder. To load CIFF images, select the DC97 folder.



10. Select the images you wish to load by clicking on them. Then click the [Acquire] button.

- To select all the images on the camera's CF card, click the [Select All] button.



11. Click the [Quit] button.

The selected images will display in the TimeTunnel window.


- The acquired images will be saved to the PowerShot Data folder inside the TimeTunnel folder.



Refer to the on-screen guide, Using TimeTunnel, for further instructions (p. 34).

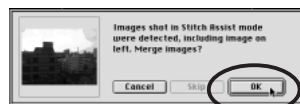
Loading Images with PhotoStitch

PhotoStitch is a program for merging images into panoramas. Images can be merged horizontally, vertically, in matrices or in 360-degree strips. It is easy to shoot images for merging using the PowerShot A50's Stitch Assist mode. To load images from a CF card in a camera, first start TimeTunnel and use the Plug-In Module to acquire them. The following procedures explain how to load and merge images shot with the Stitch Assist mode.

1. Attach the camera to your Macintosh computer (p. 27).
2. Turn the camera's Mode Dial to the [PC] position.
3. Open the  (Apple) menu and select the [Chooser]. Set AppleTalk to [Inactive] for the port you are using.
4. Start TimeTunnel and acquire the images you wish to merge by following steps 4 to 11 on pages 28 to 29 in the "Loading Images with TimeTunnel" section.
A message stating that images shot in Stitch Assist mode were detected will appear and ask whether you wish to merge them.

5. Click the [OK] button.

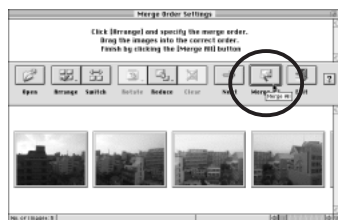
If the images you wish to merge do not appear immediately, click the [Skip] button. If the correct ones appear, click the [OK] button. PhotoStitch will start and display your images.



6. Click the [Merge All] button.

The loaded images will automatically begin merging, displaying the preliminary results in the Merge Original Images window.

- The merged image hasn't actually been created yet at this point.



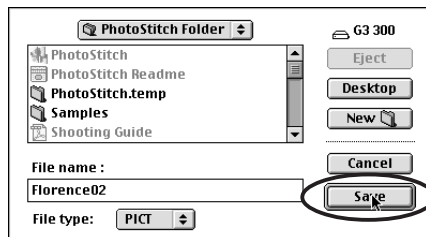
7. Click the [Start] button.

The images will begin the final merge.

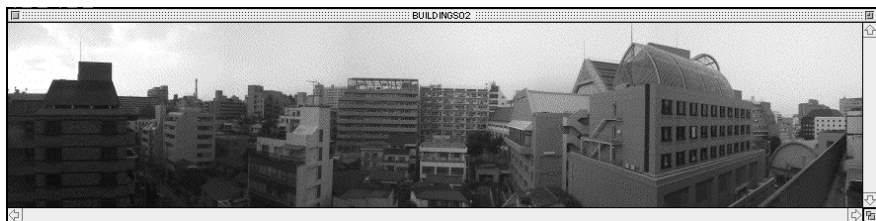
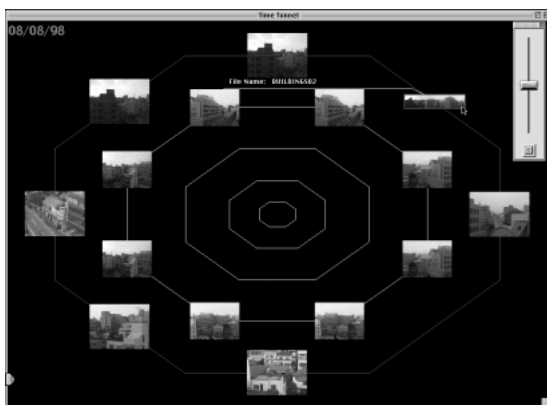


- When the merge is complete, input a file name, select a file format, select a folder and click the [Save] button.

The merged image has now been added to the tunnel file.




Double-click the merged image in TimeTunnel to display it at a larger size.



Refer to the on-screen guide, Using PhotoStitch, for further instructions (p. 34).

Handling Images with SlideShowMaker

SlideShowMaker is a program that augments the slide show function of your PowerShot A50. You can specify the order in which slides are shown or add images from your computer. The edited slide shows can then be loaded back onto the CF card for viewing with the camera.

1. Attach the camera to your Macintosh computer (p. 27).
2. Turn the camera's Mode Dial to the [PC] position.
3. Open the  (Apple) menu and select the [Chooser]. Set AppleTalk to [Inactive] for the port you are using.

4. Start SlideShowMaker.

Open the SlideShowMaker folder and double-click [SlideShowMaker].



5. A dialog will ask if you wish to view the Using SlideShowMaker guide. Click the [Yes] button to view it or the [No] button to proceed directly to the program.
6. Confirm or select the correct communication settings (communications port and baud rate).
 - Click the [File] menu and select [Communication Settings] to display the Communication Settings dialog.
 - Select the port to which the interface cable is connected.
 - Select the [115.2K] baud rate (transmission speed) unless you have trouble establishing a connection. If you have trouble, try progressively slower speeds.

7. Click the [Connect to Camera] button.



8. Select [Connect to Camera] and click the [OK] button.

If you are loading images from a CF card in a PC card slot, select the [Connect to Computer] option instead (p. 27).



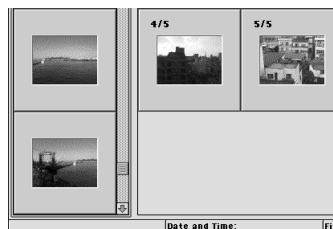
9. Select a show from slide shows 1 to 3.



10. Read the message that appears and click the [OK] button.



11. Drag and drop images to add them to the slide show.
Drag images from the area on the left and drop them into the area on the right.



12. Click the [Save Slide Show to Camera] button.
The slide show will be saved to the CF card in the camera under the name selected in Step 9.

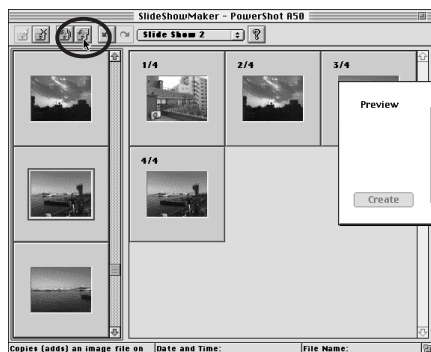


Use the camera's slide show function to view the slide show.

Refer to the on-screen guide, Using SlideShowMaker, for further instructions (p. 34).

Adding Images from the Computer to a CF Card in a Camera

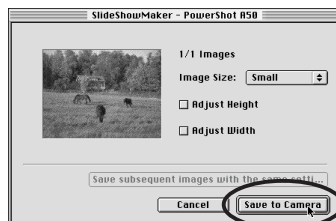
You can insert images from your computer into a slide show on a CF card in a camera by clicking the [Export Image File to Camera] button.



Click the [Export Image File to Camera] button.

Navigate to the appropriate drive and folder, select the image(s) and click the [Open] button.

Specify an image size and image adjustment option and click the [Save to Camera] button.

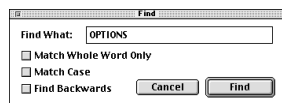


On-screen guides in the Portable Document Format (PDF) which start with the word 'Using' can be accessed by double clicking its icon in the respective program's folder.

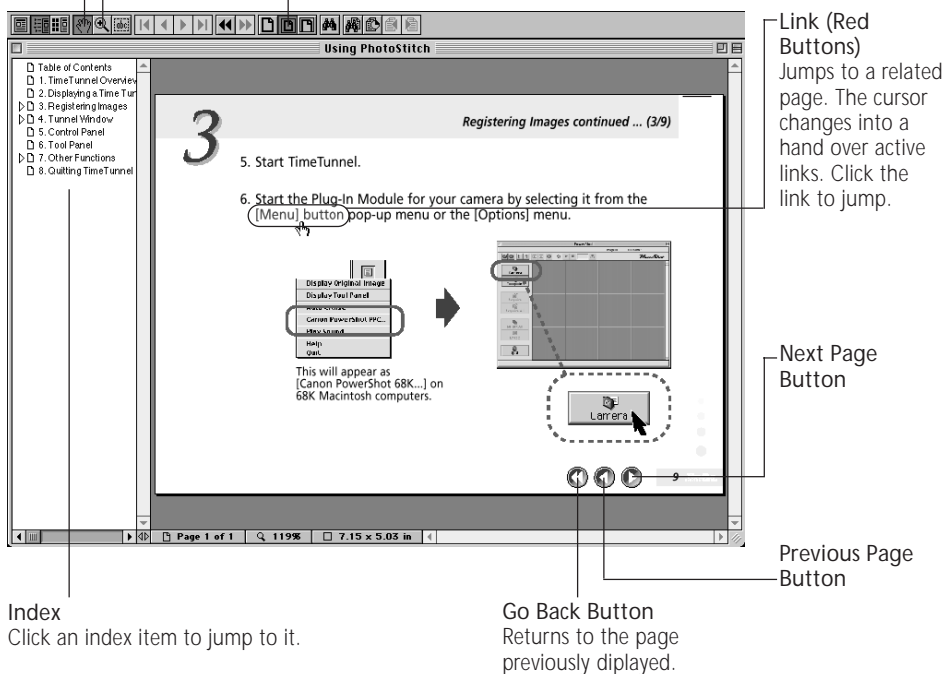
Hand Tool

Changes the mouse cursor into a hand to move the document around when you are zoomed in. The button remains selected while in use.

Zooms in on part of a document. Click the button and then the area you wish to zoom. Hold the [Ctrl] key and click to zoom back out.



Searches for pages containing text you input in the Find dialog.



You may also use the arrow tools on the toolbar and the keyboard cursor keys to page through a document.

Canon Customer Support

Canon Inc.

30-2 Shimomaruko 3-chome, Ohta-ku, Tokyo
146-8501, Japan

NORTH AMERICA

Canon U.S.A., Inc.

Canon Customer Care Center
Phone (US): 1-800-423-2366 (Automated Support: 24 hours/day, 7 days/week)

Canon Canada Inc.

Phone (Canada): 1-800-OK-CANON (1-800-652-2666) (24 hours/day, 7days/week)

EUROPE

Canon (UK) Ltd.

Helpdesk
Tel No.: 0990 143 723 (Calls may be recorded.)
Fax No.: 0990 143 340 BBS No.: 0990 143 350

Canon France S.A.

Hotline: (1) 41 99 70 70
Tél: (1) 41 99 77 77 Télécopie: (1) 41 99 79 51

Canon S.A.V. Photo Video France

Hotline: (1) 49 04 01 00 Télécopie: (1) 49 04 01 01

Canon Deutschland GmbH

Canon-Hotline-Service
Customer-Support: 02151/349-555 Telefax: 02151/349-588
Info-Desk: 02151/349-566 Info-Desk Fax: 02151/349-599 Mailbox: 02151/349-577

Canon Italia S.p.A.

Pront Canon: 02 8249 2000 BBS: 02 8249 2099

OCEANIA

Canon Australia Pty. Ltd.

Info-Line: (02) 9805 2864

Canon New Zealand Ltd.

Info-Line: 0900-522666

ASIA

Canon Singapore Pte. Ltd.

79 Anson Road, #09-01 / 06, Singapore 079906
Phone: (65) 532 4400 Fax: (65) 221 7577

Canon Hongkong Co., Ltd.

Phone: 852-2739-0802 Fax: 852-2369-7701

Canon Marketing Services

2 Alexandra Road, #04-01A, Delta House, Singapore 159919
Phone: (65) 273 5311 Fax: (65) 273 6786

Canon Marketing (Malaysia) Sdn. Bhd.

13A Jalan 219, 46100 Petaling Jaya, Selangor D.E., Malaysia
Phone: (60) 757 7210 Fax: (60) 757 7832

Canon Marketing (Thailand) Co., Ltd.

2nd Floor, Indosuez House, 152 Wireless Road, Bangkok 10330 Thailand
Phone: (662) 651 4000, Ext. 454 Fax: (662) 651 4095

Ulead Customer Support

INTERNATIONAL

Ulead Systems, Inc. (Taiwan)

Tel: +886-2-8787-6740

Fax: +886-2-8787-6741

Internet: support@ulead.com.tw

NORTH AND SOUTH AMERICA

Ulead Systems, Inc. (USA)

Tel: +1-310-523-9393

Fax: +1-310-523-9399

Internet: support@ulead.com

EUROPE

Germany Ulead Support Center

Tel: +49-2602-917-329

Fax: +49-2602-917-327

Internet: verkauf@ulead.de

France Centre d'Assistance Ulead

Tel: +33-1-49-46-23-46

Fax: +33-1-49-46-23-49

Internet: support@graphics-france.com

BIT (UK) Limited

Tel: +44-1420-83811

Fax: +44-1420-80657

Internet: 100111.3424@compuserve.com

World Wide Web <http://www.ulead.com>

Canon