

Canon



Color Bubble Jet™ Printer

BJC-3000 Series

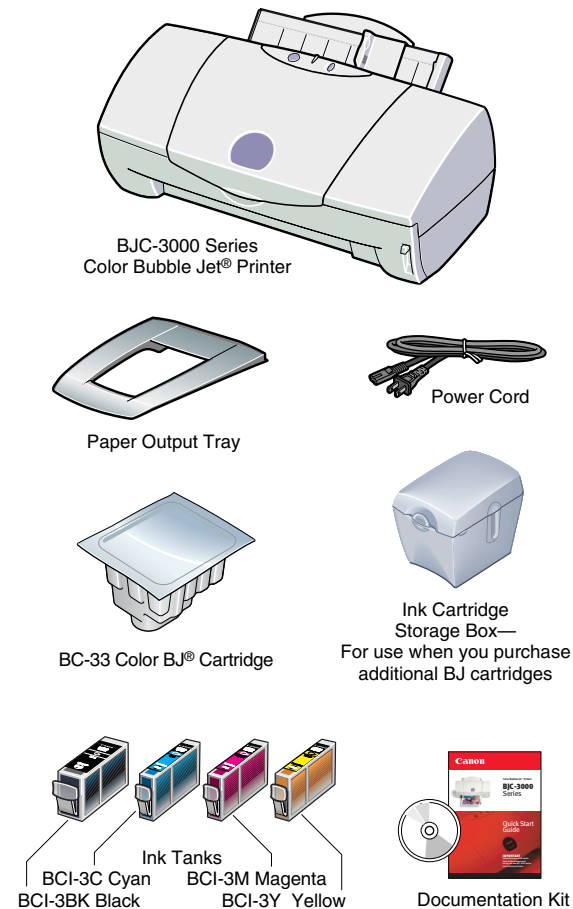
Quick Start Guide

IMPORTANT

Follow the steps in this Quick Start Guide to unpack and set up your new BJC-3000 Series Color Bubble Jet Printer.

1 Unpack the Printer

1 Remove all items from the box.



The Canon Creative CD-ROM includes:

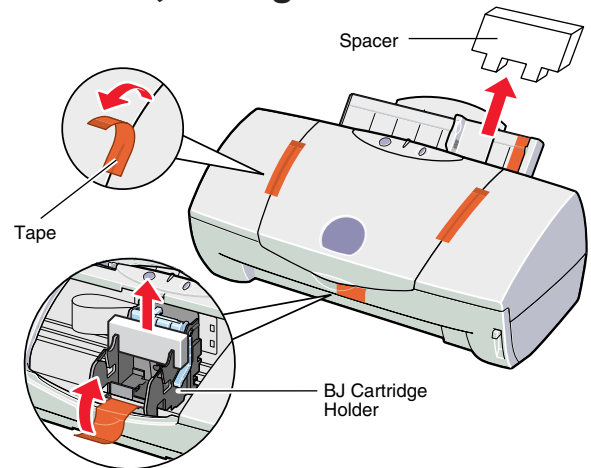
- Microsoft® Windows® printer driver
- Macintosh® printer driver
- IS-32 Color Scanner Cartridge driver
- Online User's Manual
- Software applications
- Electronic registration



You will need to purchase a parallel cable for Windows 95/98/2000 or Windows NT® (must be IEEE 1284-compliant), or a USB cable for Windows 98/2000 or Mac® OS. (Some models in the BJC-3000 Series may come with a USB cable.)

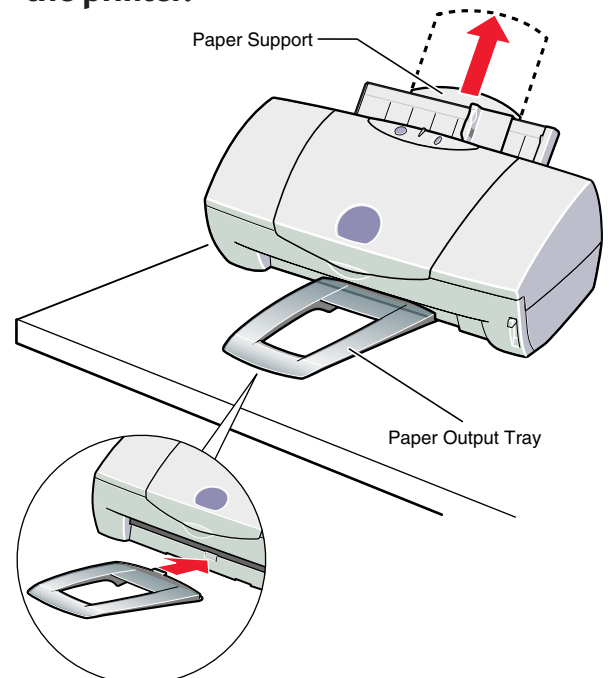
2 Remove all shipping tape and materials from the unit.

Open the front cover and remove the protective material and fixing tape from the BJ cartridge holder.



Note that tape may not be in the exact locations shown here.

3 Extend the paper support, and attach the paper output tray to the front of the printer.



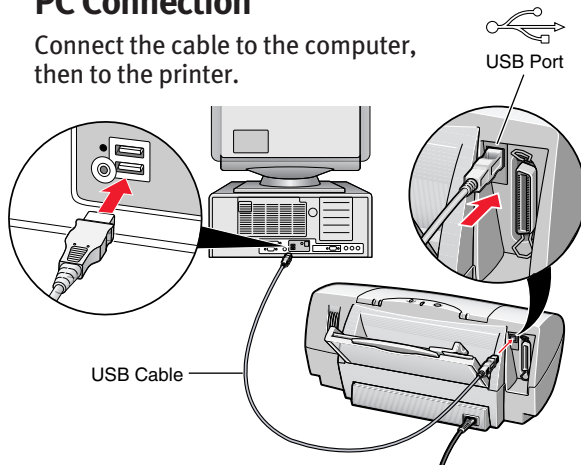
2 Connect the Printer to the Computer

Make sure your computer is turned off.

● USB Cable Users

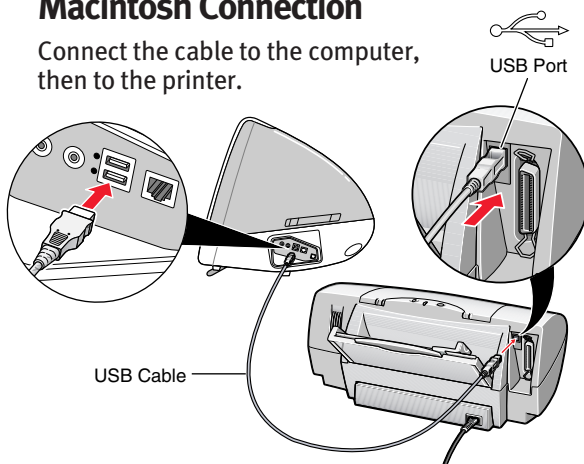
PC Connection

Connect the cable to the computer, then to the printer.



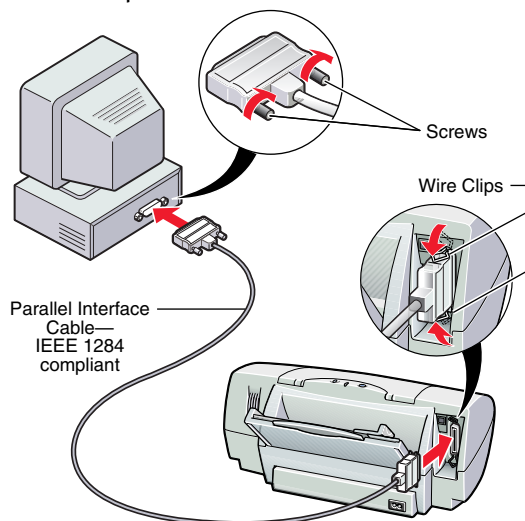
Macintosh Connection

Connect the cable to the computer, then to the printer.



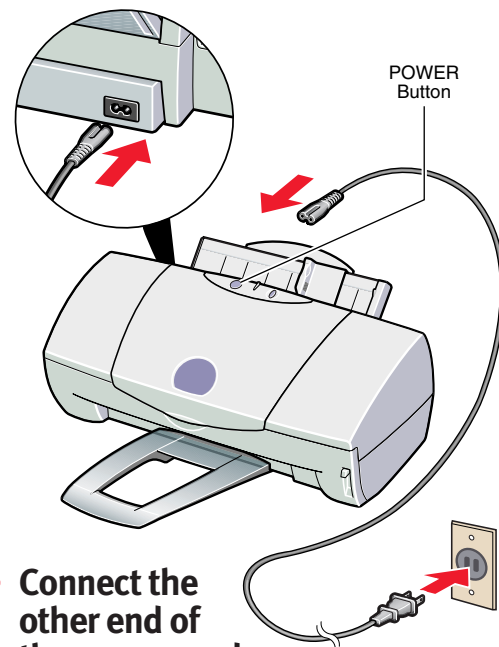
● Parallel Cable Users

Connect the cable to the computer and then to the printer.



3 Plug in the Printer

1 Connect the power cord to the back of the printer.

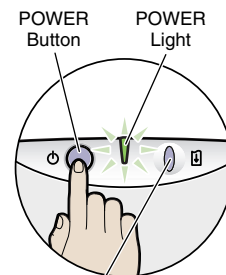


2 Connect the other end of the power cord to a power outlet.

3 Press the POWER button to turn the printer on.

The POWER light starts flashing.

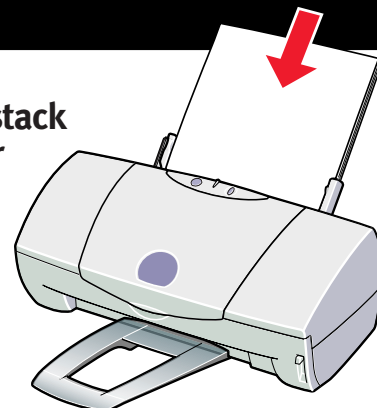
RESUME Button
Press to resume printing after clearing a paper jam.



➔ **Important!** The socket-outlet shall be installed near the equipment and shall be easily accessible.

4 Load Paper

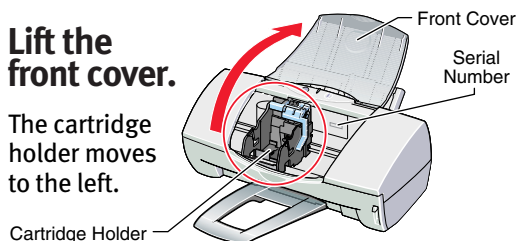
Load a stack of paper in the sheet feeder.



5 Install the Canon BJ® Cartridge

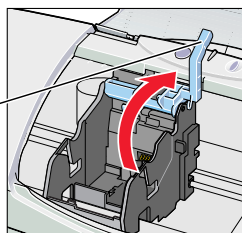
1 Lift the front cover.

The cartridge holder moves to the left.

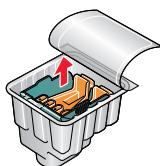


2 Raise the blue cartridge lock lever on the cartridge holder.

Lock Lever



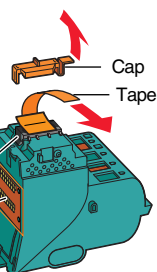
3 Remove the cartridge from its package.



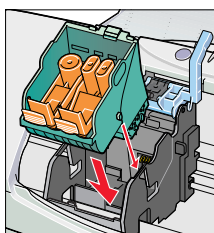
4 Remove these protective materials:

- Orange cap
- Orange tape

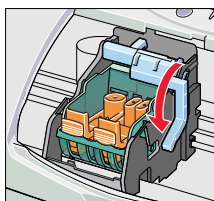
Do Not Touch these areas



5 Set the cartridge into the cartridge holder.

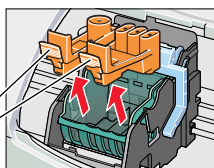


6 Lower the blue cartridge lock lever until it locks into place.



7 Remove the two orange protective cartridge caps.

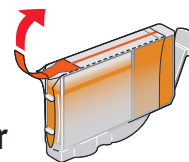
Press in on the tabs to remove the caps.



6 Insert the Four Ink Tanks

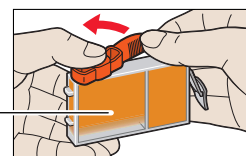
1 Pick up the BCI-3Y (Yellow) Ink Tank.

- Pull up the orange tape.
- Remove the plastic wrapper from the tank.

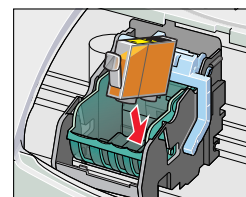


2 Twist off the orange protective cap.

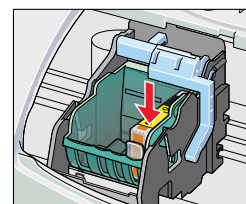
To prevent spills, do not press the side of the ink tank.



3 Insert the yellow ink tank into the right slot of the cartridge.

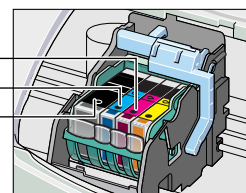


4 Press down on the top of the ink tank until it locks into place.



5 Install the other 3 ink tanks as shown.

Magenta (BCI-3M)
Cyan (BCI-3C)
Black (BCI-3BK)



Important!

Before you close the front cover, write down the serial number (located inside the printer to the right of the cartridge holder).

Serial No.

Date of Purchase

6 Close the front cover.

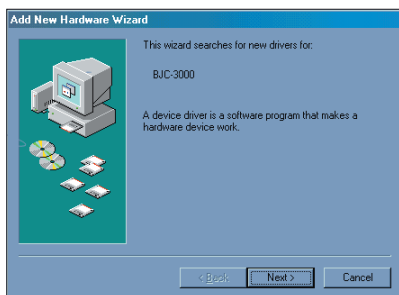
When the POWER light stops flashing, the printer is ready.

7 Install the Printer Driver

The printer driver controls communication between the printer and your computer. Use the Canon Creative CD-ROM and follow these simple steps and the instructions on the screen.

● Windows 98—USB Cable Users

1. Turn on the computer. The Add New Hardware screen appears:



2. Insert the Canon Creative CD-ROM into your CD-ROM drive and click **Next**. The next screen asks what you want Windows to do:



3. Choose "Search for the best driver for your device," and click **Next**. The next screen asks you where to look for the driver:



4. As shown above, click the "CD-ROM drive" check box; be sure to **uncheck the other options**. Click **Next**.

5. Once the driver is found, this screen appears:



6. Click **Next**. The next screen shows the successful completion of this installation. USB is now enabled on your computer.



7. To proceed on to the printer driver installation, click **Next**.

8. Eject the CD-ROM and re-insert it. Setup starts automatically.



Note

If Setup does not start automatically, click **Start** on the Windows taskbar and then click **Run**.

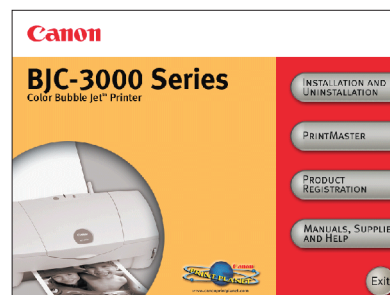
Type X:\SETUP (where X: is your CD-ROM drive). Then click **OK**.

9. Follow the on-screen instructions. Setup includes:

- Printer driver installation
- Product registration (See What's Next—Product Registration)
- Creative software installation

Installation Tips

If you do not see one of these screens, eject the CD-ROM and re-insert it. Then follow the instructions on the screen.



● Windows 95/98/NT—Parallel Cable Users

1. Turn on the computer. If you see any type of "New Hardware Found" or "Update Wizard" screen, click **Cancel** to return to the Windows desktop.
2. If any other applications start automatically, close them before you start the driver installation. This is very important. Make sure **NO** applications are running, including any virus protection programs.
3. Make sure the Windows desktop appears on the screen.
4. Insert the Canon Creative CD-ROM into your CD-ROM drive. Setup starts automatically.



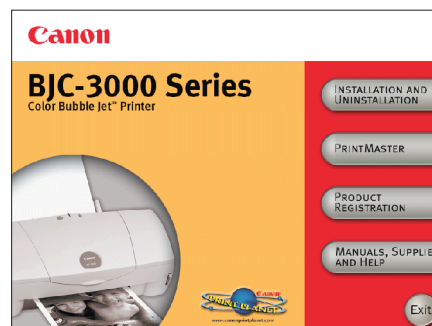
If Setup does not start automatically, click **Start** on the Windows taskbar and then click **Run**.

Type X:\SETUP (where X: is your CD-ROM drive). Then click **OK**.

5. Follow the on-screen instructions.
Setup includes:
 - Printer driver installation
 - Product registration (see What's Next—Product Registration)
 - Creative software installation

Installation Tips

If you do not see one of these screens, eject the CD-ROM and re-insert it. Then follow the instructions on the screen.

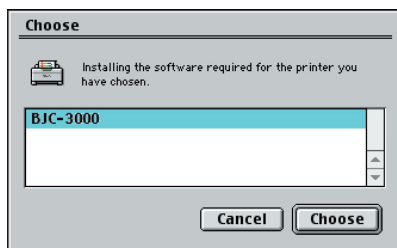


● Macintosh—USB Cable Users

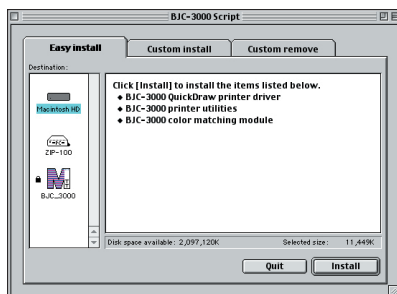
1. Turn on the computer.
2. Insert the Canon Creative CD-ROM into your CD-ROM drive. The following screen appears:



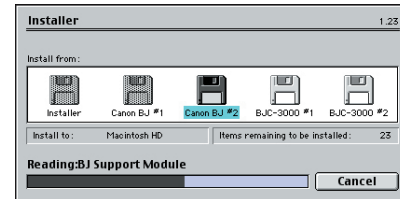
3. Click on the "Install BJC-3000 Drivers." The License Agreement screen appears. Read the agreement and click **Agree** to continue.
4. The next screen asks you to choose the printer you are installing:



5. Click on the printer name to highlight it, and click **Choose**. This screen appears:



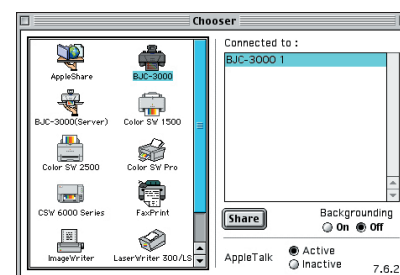
6. Click on **Install** to continue with Easy Install. The next screen reports the progress of the driver installation.



7. After driver installation, you must reboot the system. Click the **Restart** button when you see the "Installation was successful" screen.
8. After rebooting, the opening screen appears, allowing you to proceed with other portions of the installation process.



9. Once installation is complete, be sure to go to the Chooser menu (under the Apple® sign) and select the BJC-3000 as the default printer.





What's Next

● Online User's Manual

Setup installs this icon on your desktop. When you double-click the icon, you'll see this screen:



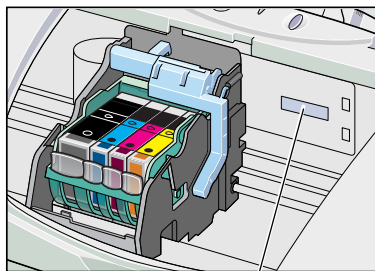
From here, you can:

- Install or use your creative software
- Register the printer
- View your online *User's Manual*

● Product Registration

By registering with Canon, you enable us to better serve you and provide you with important Canon product information. Canon will respect your privacy with regards to the information you provide us.

During product registration, you are asked for the serial number of your printer. This number is located inside the printer. When you open the printer cover, the cartridge holder moves to the center of the printer; the serial number is located to the right of the cartridge holder.



Serial Number



Getting Help From Canon

Canon Computer Systems, Inc. offers a full range of customer technical support* options:

- For e-mail technical support, the latest driver downloads and answers to frequently asked questions (www.ccsi.canon.com)
- 24-hour, 7-day-a-week automated support for troubleshooting issues on most current products (**1-800-423-2366**)
- 24-hour, Fax-On-Demand System for product specifications and technical information (**1-800-526-4345**)
- Free technical support Monday–Saturday for products still under warranty** (**1-757-413-2848**)
- Technical support 7 days a week for products no longer under warranty for \$24.99 per call (**1-800-423-2366**), or for \$2.50 per minute, to a maximum of \$25.00 per call (**1-900-246-1200**)

NOTE: Within Canada, call for technical support 24 hours a day, 7 days a week (**1-800-OK-CANON**)

* Support program specifics subject to change without notice.

** Refer to individual product information for warranty details.



ENERGY STAR® Compliant

©2000 Canon Computer Systems, Inc. Canon, BCI, BJ, BJC, and Bubble Jet are trademarks of Canon Inc. Print Planet is a service mark of Canon Computer Systems, Inc. All other product and brand names are trademarks or service marks of their respective owners. As an Energy Star® Partner, Canon U.S.A., Inc., has determined that this product meets the Energy Star® guidelines for energy efficiency.

Printed in U.S.A.
CST-5303-001
40-41645-0400