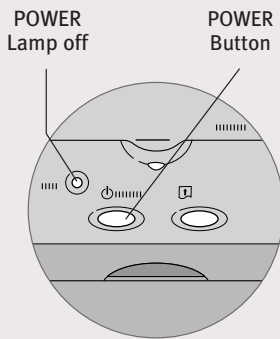


**Continue with Step 6  
on side two.**

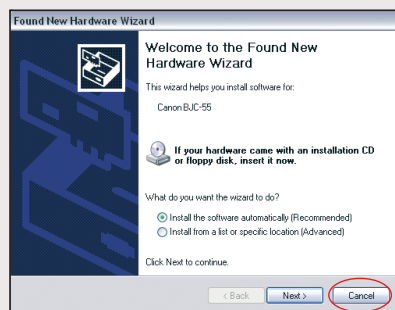
## 6 Install the Printer Driver (Windows®)

- 1 Be sure that the printer is off, then turn on your computer.



**NOTE:** For Windows® XP or Windows 2000, log on to Windows as an Administrator before continuing.

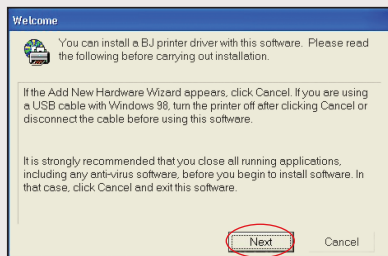
**IMPORTANT:** If you see the Add New Hardware Wizard, click **Cancel**.



- 2 Close any open software applications, then insert the “BJC-55 Setup Software & User’s Guide” CD-ROM. The setup program should run automatically.

**NOTE:** If the setup program does not run, click **Start**, then **Run**, then type **D:\msetup.exe**, where **D** is your CD-ROM drive.

- 3 Read the Welcome screen, then click **Next**.



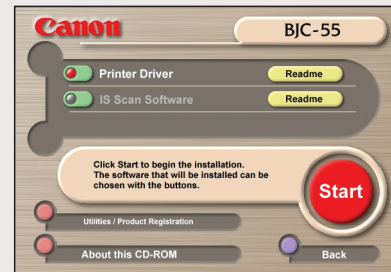
- 4 Read the License Agreement, then click **Yes**.

- 5 When the main menu appears, click **Install Software**.

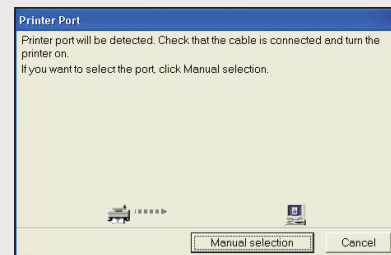


**NOTE:** If you are prompted to restart Windows, remove the CD-ROM, then click **OK**. After the computer restarts, insert the CD-ROM and continue.

- 6 Click **Start**. (If the Printer Driver button is not red, select **Printer Driver**, then click **Start**.) The printer driver will start loading automatically.

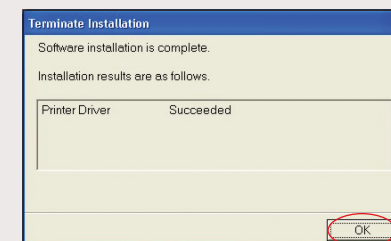


- 7 When the Printer Port window appears, **TURN THE PRINTER ON** so the printer port (connection) can be automatically detected.



The software will begin identifying the printer port being used.

- 8 When the Terminate Installation window appears, click **OK**.



**NOTE:** Remember to register your product to ensure product support. The serial number is located on the inside of the printer, behind the battery pack.

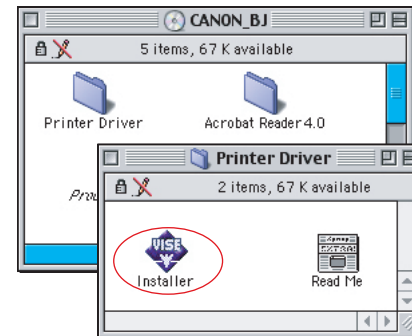
- 9 When the installation and registration process has completed, click **Exit**. If you are prompted to restart the computer, click **Yes**.

## 6 Install the Printer Driver (Macintosh®)

- 1 Turn on your Mac® and insert the “BJC-55 Setup Software & User’s Guide” CD-ROM.

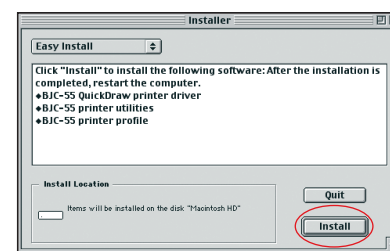
**NOTE:** Screen shots may differ depending on the operating system used.

- 2 Open the Printer Driver folder on the CD-ROM, then double-click the **Installer** icon.



- 3 Read the License Agreement, then click **Accept**.

- 4 Click **Install**. The printer driver will load automatically.



- 5 If the message “No other applications can be running...” displays, click **Continue**.

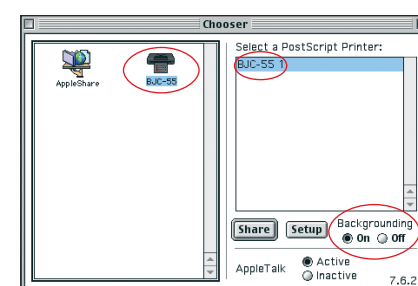
- 6 When the “Installation was successful” screen displays, click **Restart**.

**NOTE:** Access your CD-ROM, double-click on **Product Registration** to register your product. The serial number is located on the inside of the printer, behind the battery pack.

- 7 After the computer restarts, **TURN THE PRINTER ON**. Select the **Apple** menu, then **Chooser**.



- 8 Click the **BJC-55** icon in the Chooser. The printer name will highlight and move to the right panel.

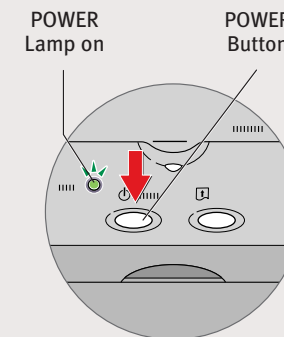


**NOTE:** To use the BJ Print Monitor, click the **Backgrounding** button to the **On** position.

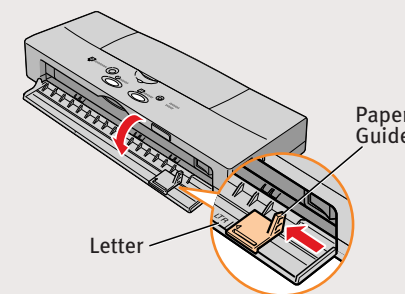
- 9 Close the Chooser

## 7 Load Paper

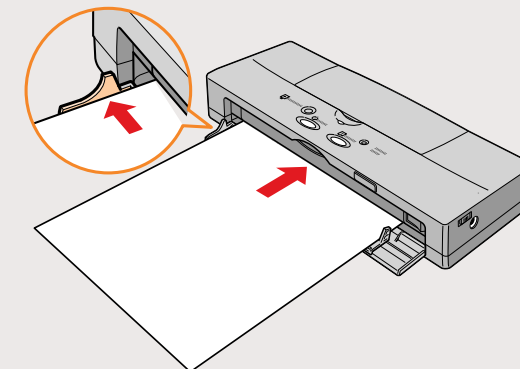
- 1 Be sure that your printer is on.



- 2 Open the front cover and move your paper guide to the right to match your paper size.



- 3 With the side you want to print on facing up, insert a sheet of paper into the printer until it stops.



- 4 Hold the sheet for about 2 seconds; it will automatically feed partially into the printer.

## 8 Getting Help From Canon

Canon offers a full range of customer technical support\* options:

- For e-mail support, the latest driver downloads and answers to frequently asked questions ([www.canontechsupport.com](http://www.canontechsupport.com))
- 24-hour, 7-day-a-week, automated support for troubleshooting issues on most current products (**1-800-423-2366**)

- 24-hour, Fax-On-Demand System for product specifications and technical information (**1-800-526-4345**)

- Technical support, free of service charges, Monday–Saturday (excluding holidays) for products still under warranty\*\* (**1-757-413-2848**)

**NOTE:** Within Canada, call for technical support 24 hours a day, 7 days a week (**1-800-OK-CANON**)

\*Support program specifics are subject to change without notice.

\*\*Refer to the warranty card for details.