

Canon

Quick Start Guide



A Universe of Creative Projects.



www.canonprintplanet.com

BJC-8200

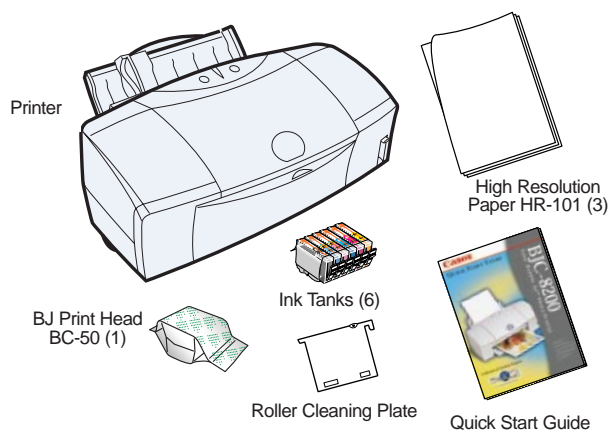
Color Bubble Jet™ Photo Printer

IMPORTANT

Follow the steps in this Quick Start Guide to unpack and set up your new BJC-8200 Color Bubble Jet Photo Printer.

1 Unpack

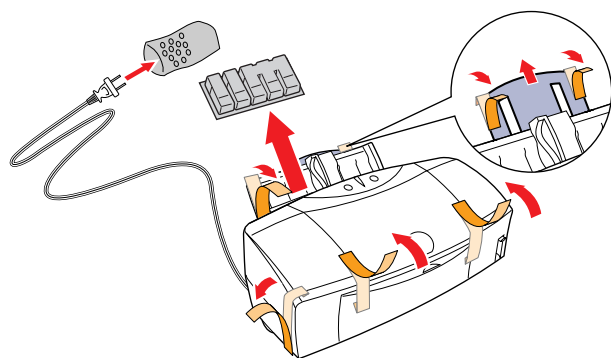
- 1 Carefully remove all items from the box.



Note: You will need a parallel or USB cable.

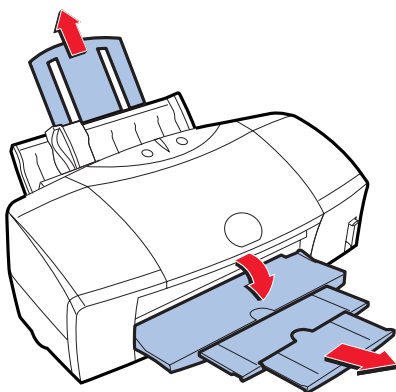
- 2 Remove and discard all shipping tape and materials.

Important! Always lift the printer by gripping both sides.



2 Extend the Paper Support and Paper Output Tray

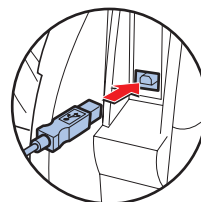
Important! Before moving on to Step 3, make sure your computer is turned off.



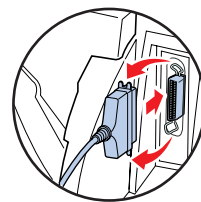
3 Connect the Printer to the Computer

- 1 First, connect the cable to the printer.

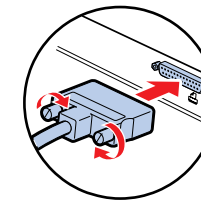
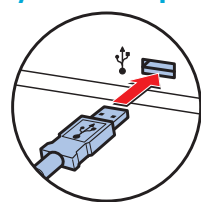
USB Connection



Parallel Connection



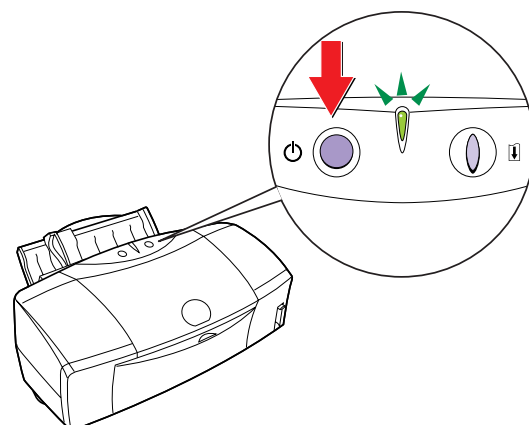
- 2 Then, connect the cable to your computer.



Note: The USB port may be on the front and/or back of the computer.

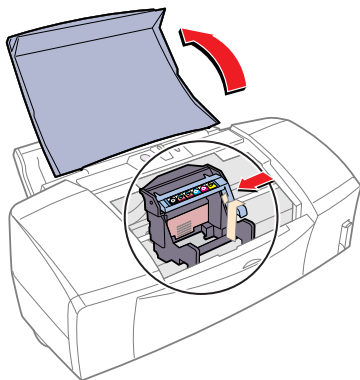
4 Plug In and Turn On

- 1 Plug in the power cord.
- 2 Press the POWER button to turn on the printer.

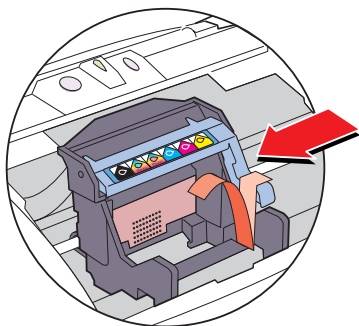


5 Install the Cartridge

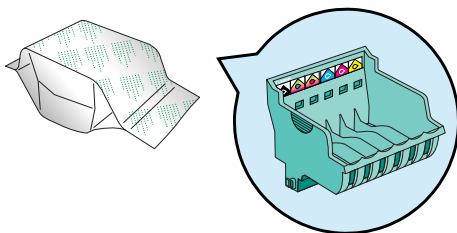
- 1 Lift the front cover. The cartridge holder moves to the center of the printer.



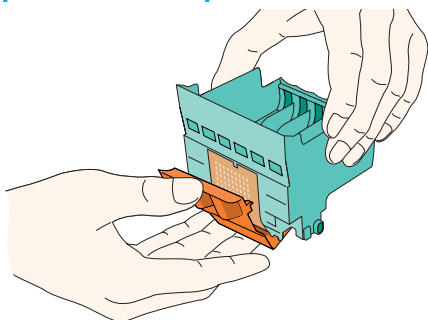
- 2 Remove the shipping material from the cartridge holder.



- 3 Remove the cartridge from the packaging.

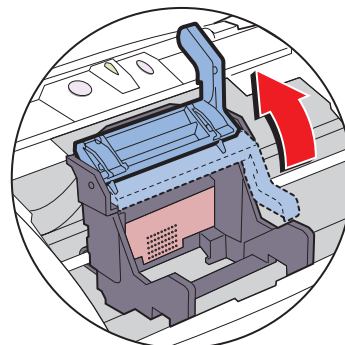


- 4 Remove and discard the orange protective cap.

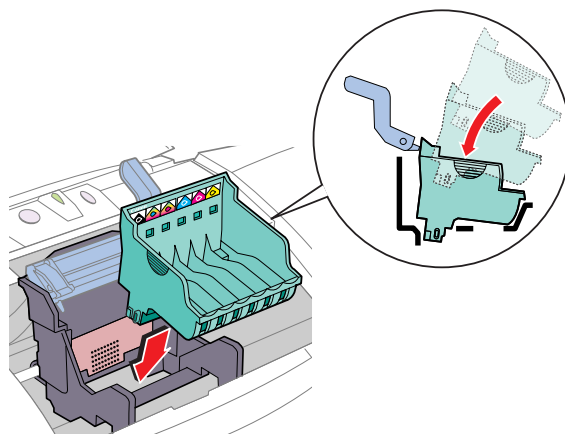


 **Important!** Do NOT touch the printhead or metallic contacts.

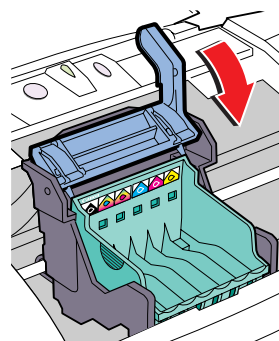
- 5 Raise the blue lock lever until it snaps into place.



- 6 Set the cartridge into the slot.

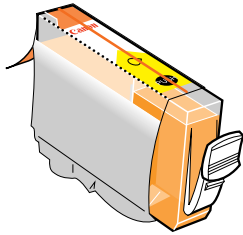


- 7 Lower the blue lock lever until it snaps into place.

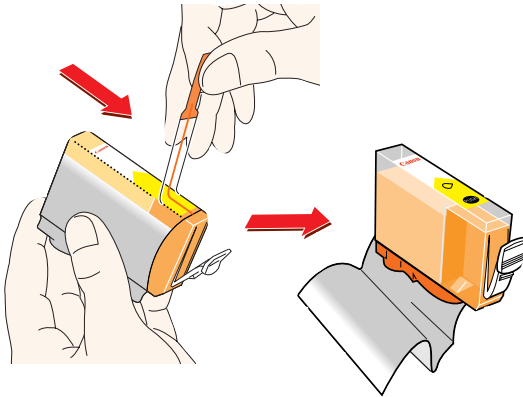


6 Insert the BJ Individual Tanks

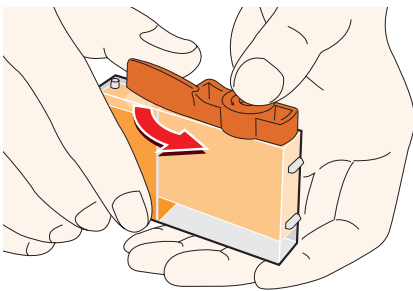
- ❶ Pick up the yellow ink tank (BCI-5Y).



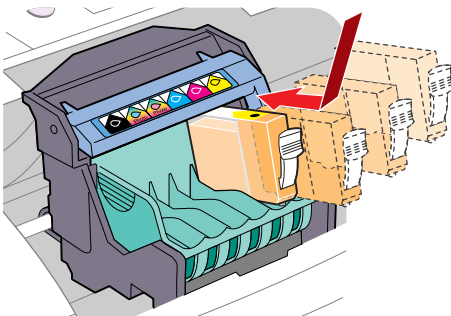
- ❷ Pull up the orange tab and remove and discard the plastic film.



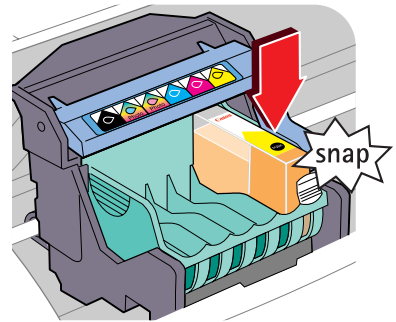
- ❸ Twist off and discard the orange plastic cap.



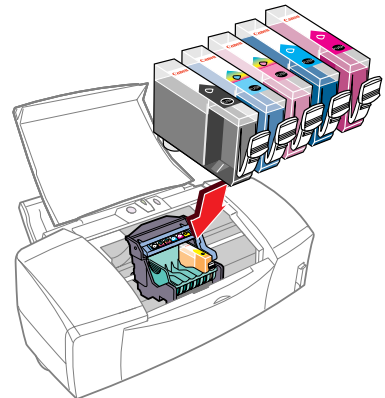
- ❹ Insert the ink tank into the correct slot. (Refer to the color guide on the blue lever.)



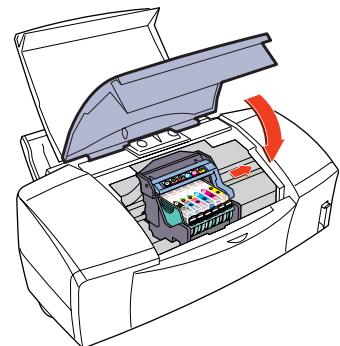
- ❺ Press down until the BJ tank snaps into place.



- ❻ Insert the remaining BJ tanks. The BJ tanks must be inserted in the order shown on the color guide label.



- ❼ Close the front cover. The printer automatically performs the print head cleaning. This procedure takes approximately 40 seconds.



7 Install the Printer Software


Windows:

- 1 Make sure that the printer is connected, then turn on the computer.
- 2 If you see the New Hardware Wizard, insert the **Canon Creative CD-ROM** into your CD-ROM drive and follow the on-screen instructions. If you do not see the New Hardware Wizard, wait until Windows completes booting up. Then, insert the CD-ROM into your CD-ROM drive.
- 3 If Setup does not start automatically, click on the **Start** button on the Windows taskbar and choose **Run**. Type **X:\Setup** (where "X" is the drive letter of your CD-ROM drive). Click **OK**.
- 4 Follow the on-screen instructions to complete installation.



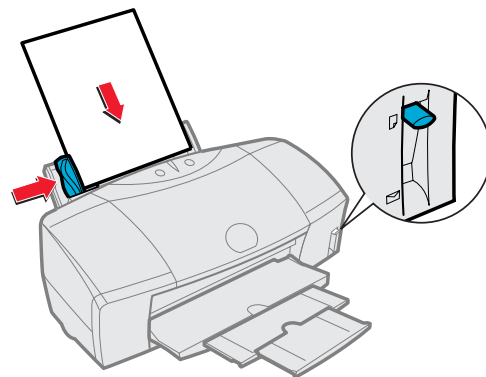
Note: If you do not see the screen shown above, eject the CD-ROM and reinsert. Then repeat the steps above.

Macintosh:

- 1 Make sure that the printer is connected, then turn on the computer.
- 2 Double-click on the **Canon BJC-8200** icon. 
- 3 Follow the on-screen instructions to complete installation.


8 Align the Print Head

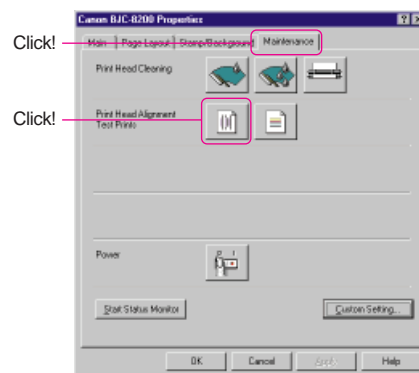
- 1 Place one sheet of **High Resolution Paper** (included in the box) in the sheet feeder.



- 2 Start the alignment procedure.

Windows:

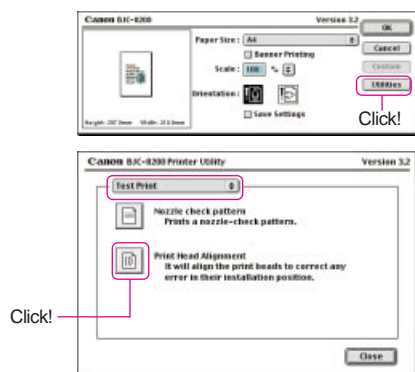
- a. Click the **Start** button, point to **Settings** then select **Printers**.
- b. Right-click the **Canon BJC-8200** icon and select **Properties**.
- c. Click the **Maintenance** tab then click the  (Print Head Alignment) icon.



Macintosh:

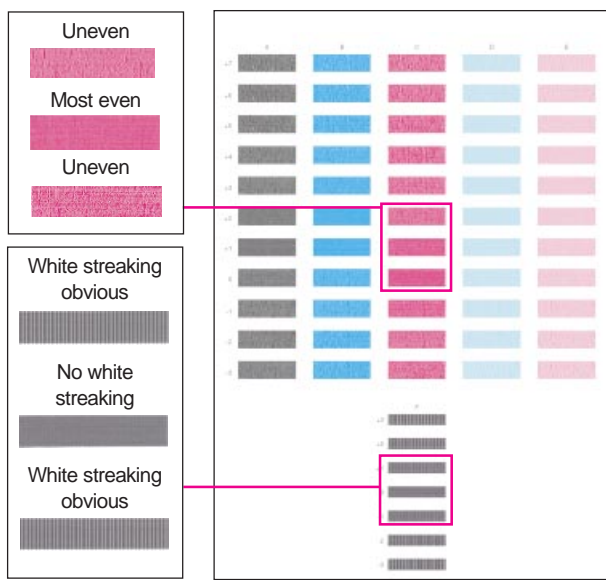
- a. In the software application, from the **File** menu, select **Page Setup**.
- b. Click the **Utilities** button.
- c. Click the down-arrow to select **Test Print**.

d. Click the  (Print Head Alignment) icon.

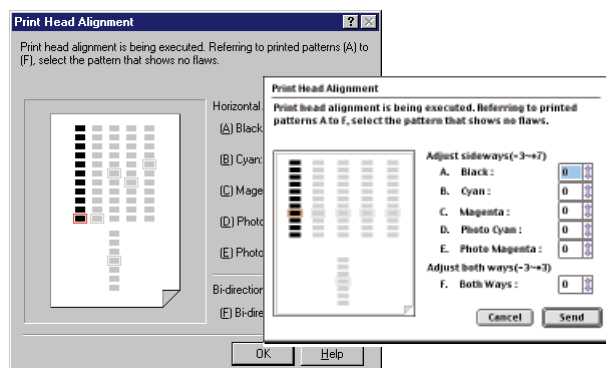


3 To print an alignment page, click **OK** when prompted.

4 Compare the different patterns for each color of your printout.



5 In the Print Head Alignment panel, enter the numbers that corresponds to the pattern that looks smoothest. Click **Send** when finished.



Canon Technical Support

Canon Printers

Canon Computer Systems, Inc. offers a full range of customer technical support* options including:

- 24-hour, 7-day-a-week, toll-free automated support for troubleshooting issues on most current products (1-800-423-2366)
- Speak to a technician free of service charge (currently Monday-Friday, 8:00 a.m.-10:00 p.m. and Saturday, 12:00 p.m.-6:00 p.m. EST, excluding holidays) for products still under warranty** (1-757-413-2848)
- Speak to a technician (currently \$24.99 per call) during holidays and days/hours not listed above regarding urgent product questions or for products no longer under warranty** (1-800-423-2366) or for a charge of \$2.50 per minute, to a maximum of \$25.00 per call (1-900-246-1200)
- E-mail support and driver downloads via Canon Computer Systems, Inc. Web site (www.ccsi.canon.com)
- 24-hour, toll-free Fax Retrieval System (1-800-526-4345)

Your device drivers for Windows 98 are included on the CD-ROM labeled Canon Creative Image and Scanner Setup. If you do not have a CD-ROM drive, you can obtain the software as follows:

- Download it from our Web site at www.ccsi.canon.com
- Download it from our Bulletin Board Service at 1-757-420-2000

* Support program specifics subject to change without notice.
** Refer to individual product information for warranty details.

For more information about Canon Products, call **1-800-OK-CANON** or visit our Web site at: www.ccsi.canon.com

Canon Computer Systems, Inc.
2995 Redhill Avenue • Costa Mesa, California 92626 U.S.A.



©1999 Canon Computer Systems, Inc. Canon, BJ, BJC and Design Essentials are registered trademarks, BCI, Bubble Jet, Canon Think Tank System, Drop Modulation Technology, PhotoRealism, "See What We Mean" and WebRecord are trademarks and Select Exchange is a service mark of Canon Inc. All other product and brand names are registered trademarks or trademarks of their respective owners. Specifications subject to change without notice. All print speeds based on high-speed draft mode. Print speed will vary depending on system configuration, software, document complexity, print mode and page coverage. As an Energy Star® partner, Canon U.S.A., Inc. has determined that this product meets the Energy Star® guidelines for energy efficiency.