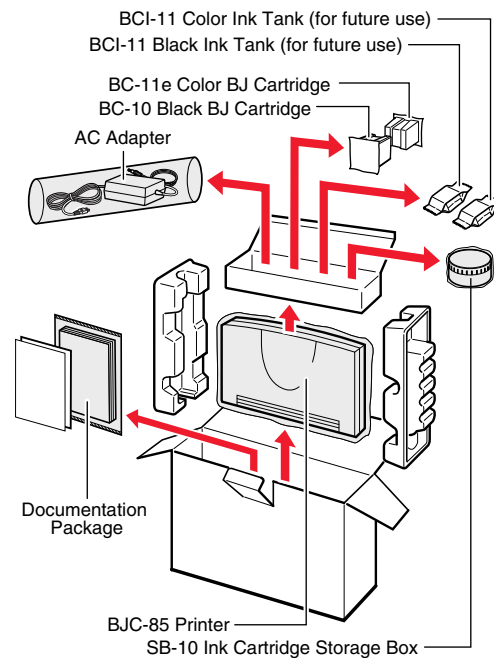


1 Unpack the Printer

1 Remove all items from the box.



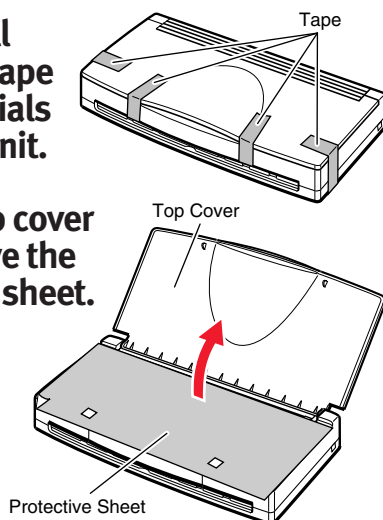
The printer driver CD-ROM includes:

- Microsoft® Windows® printer driver
- Macintosh® printer driver
- IS-12 Color Scanner Cartridge driver
- Online User's Manual
- Software applications
- Electronic registration

Note You will need to purchase a parallel cable for Windows 95/98, Windows NT®, or Windows CE (must be IEEE 1284-compliant), or a USB cable for Windows 98 or Mac® OS.

2 Remove all shipping tape and materials from the unit.

Lift the top cover and remove the protective sheet.



Note Tape may not be in the exact locations shown here.

2 Connect the Printer to the Computer

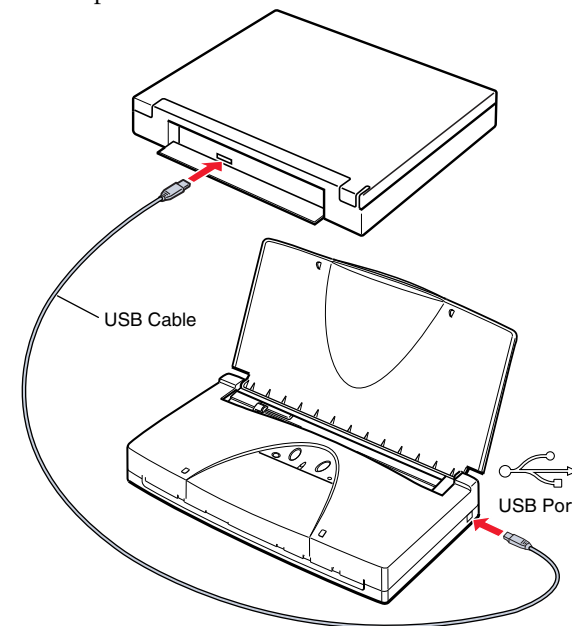
You can connect the printer to the computer in one of three ways: • USB Cable • Parallel Cable • Wireless IrDA
The interface you use depends on your computer.

Make sure your computer is turned off.

● USB Cable Users

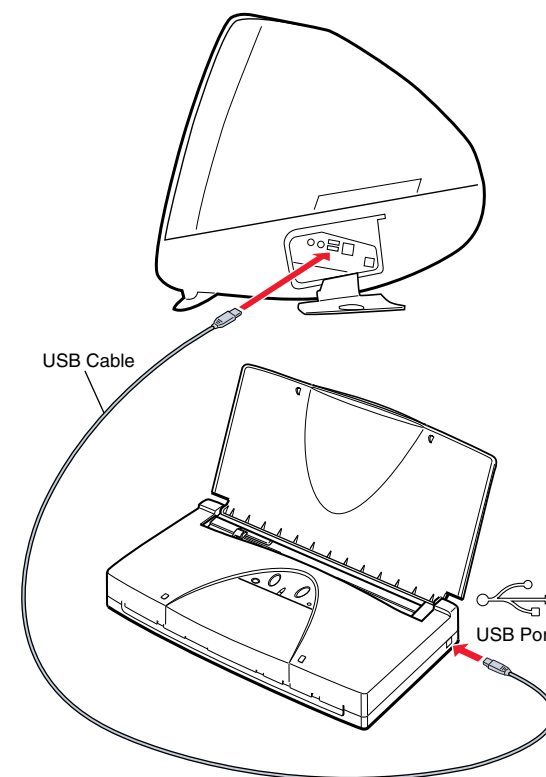
PC Connection

Connect the cable to the computer, and then to the printer.



Macintosh Connection

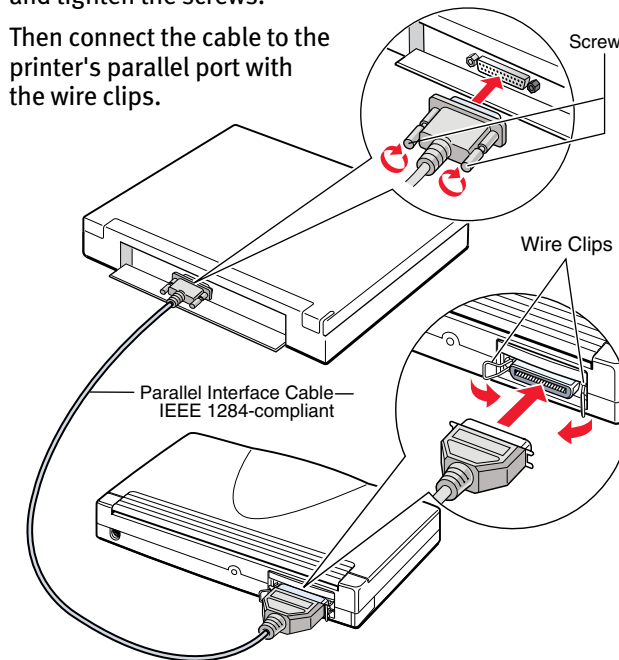
Connect the cable to the computer, and then to the printer.



● Parallel Cable Users

Connect the cable to the computer's parallel port and tighten the screws.

Then connect the cable to the printer's parallel port with the wire clips.



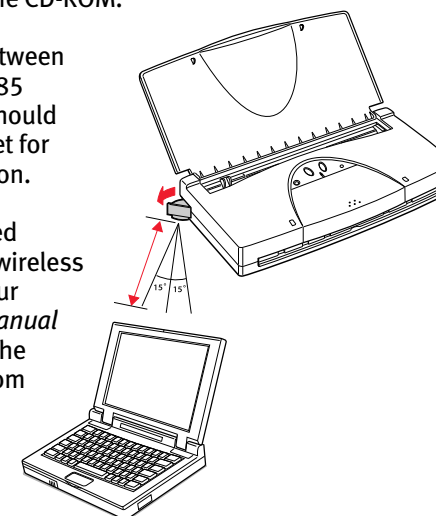
● Wireless IrDA Users

If you have a computer with an infrared port for wireless data transmission, you can set up a cordless connection with the BJC-85. In order to use the infrared port, make sure your computer meets the following requirements:

- Computer – PC (not compatible with Macintosh)
- Operating System – Windows 98, CE 2.1
- Infrared Transmission Device – Built-in IrDA port or IrDA transmission adapter on the PC; IrDA version 1.1 or later
- Drivers – BJC-85 printer driver and Microsoft infrared driver version 3.0. NOTE: Microsoft IrDA driver is not included on the CD-ROM.

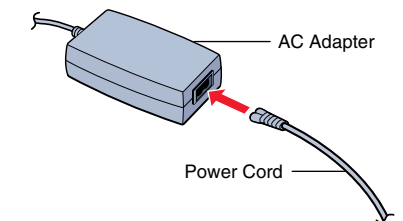
The distance between the PC and BJC-85 infrared ports should not exceed 3 feet for data transmission.

For more detailed information on wireless printing, see your online *User's Manual* after installing the printer driver from the CD-ROM.

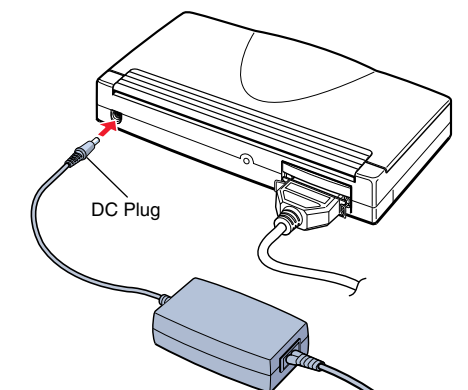


3 Connect the AC Adapter

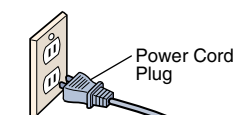
1 Insert the power cord into the AC Adapter.



2 Plug the DC plug into the back of the printer.



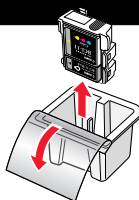
3 Plug the power cord into the power outlet.



Important! The socket-outlet shall be installed near the equipment and shall be easily accessible.

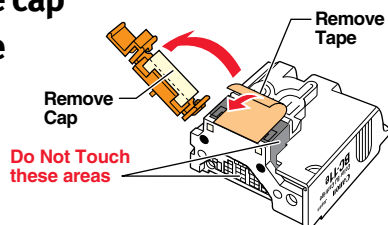
4 Install the Canon BJ® Cartridge

- 1 Remove the BC-11e Color BJ Cartridge from its package.

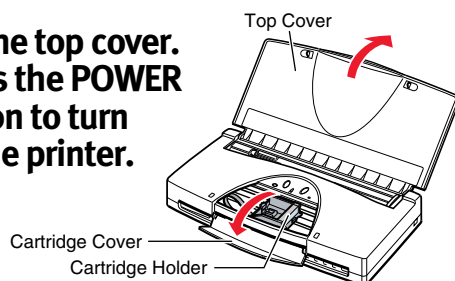


- 2 Remove these protective materials:

- Orange cap
- Orange tape

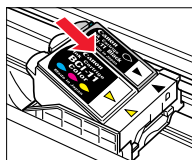


- 3 Lift the top cover. Press the POWER button to turn on the printer.

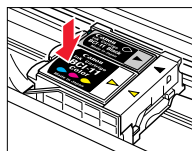


- 4 Open the cartridge cover, and press the CARTRIDGE button to move the cartridge holder to the center of the printer.

- 5 Align the triangular marks on the BJ cartridge and the cartridge holder; set the cartridge in the holder at a slight angle.

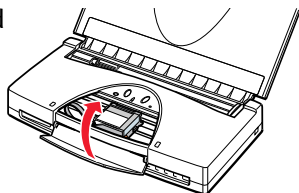


- 6 Gently press down on the raised left side of the BJ cartridge until it locks into place.



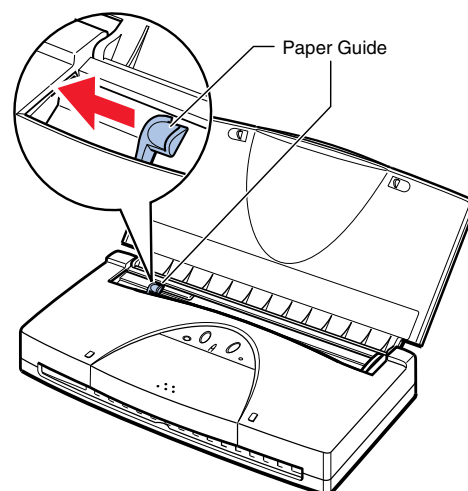
- 7 Close the cartridge cover and press the CARTRIDGE button.

The BJ cartridge and holder move to the home position on the right side of the printer.

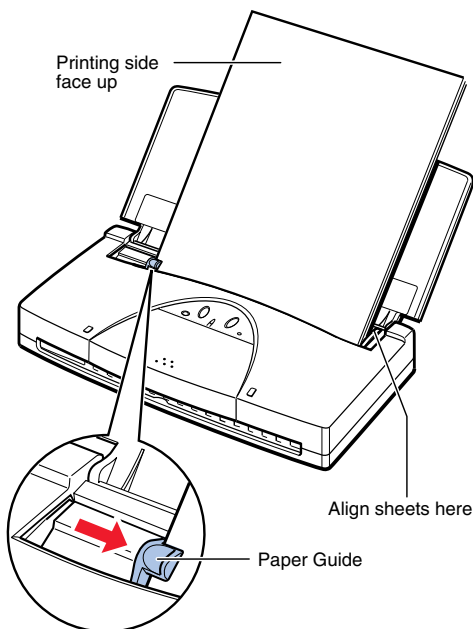


5 Load Paper

- 1 Move the paper guide to the left.



- 2 With the side you want to print on facing up, insert the paper into the printer until it stops.



- 3 Adjust the paper guide to the left edge of the stack.

Install the Printer Driver

The printer driver controls communication between the printer and your computer. Use the printer driver CD-ROM and follow these simple steps and the instructions on the screen.

Windows 98—USB Cable Users

1. Turn on the computer. The Add New Hardware screen appears:



2. Insert the printer driver CD-ROM into your CD-ROM drive and click **Next**. The next screen asks what you want Windows to do:



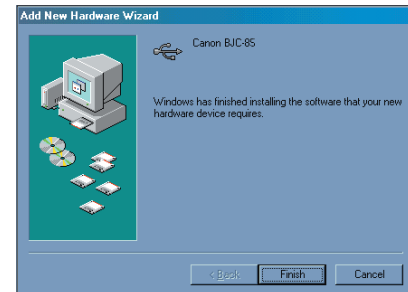
3. Choose "Search for the best driver for your device," and click **Next**. The next screen asks you where to look for the driver:



4. As shown above, click the "CD-ROM drive" check box; be sure to **uncheck the other options**. Click **Next**.
5. Once the driver is found, this screen appears:



6. Click **Next**. The next screen shows the successful completion of this installation. USB is now enabled on your computer.



7. To proceed on to the printer driver installation, click **Finish**.

8. Eject the CD-ROM and re-insert it. Setup starts automatically.



Note

If Setup does not start automatically, click **Start** on the Windows taskbar and then click **Run**.

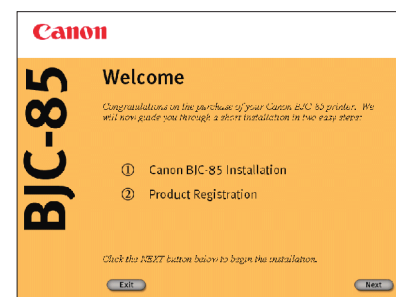
Type X:\SETUP (where X: is your CD-ROM drive). Then click **OK**.

9. Follow the on-screen instructions. Setup includes:

- Printer driver installation
- Product registration
- Creative software installation

Installation Tips

If you do not see this screen, eject the CD-ROM and re-insert it. Then follow the instructions on the screen.



● Windows 95/98/NT—Parallel Cable Users

1. Turn on the computer. If you see any type of "New Hardware Found" or "Update Wizard" screen, click **Cancel** to return to the Windows desktop.
2. If any other applications start automatically, close them before you start the driver installation. This is very important. Make sure **NO** applications are running, including any virus protection programs.
3. Make sure the Windows desktop appears on the screen.
4. Insert the printer driver CD-ROM into your CD-ROM drive. Setup starts automatically.



Note

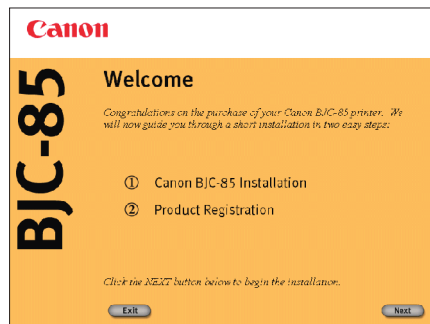
If Setup does not start automatically, click **Start** on the Windows taskbar and then click **Run**.

Type X:\SETUP (where X: is your CD-ROM drive). Then click **OK**.

5. Follow the on-screen instructions.
Setup includes:
 - Printer driver installation
 - Product registration
 - Creative software installation

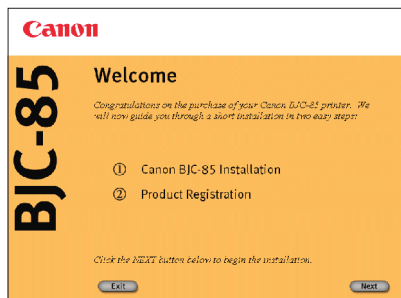
Installation Tips

If you do not see this screen, eject the CD-ROM and re-insert it. Then follow the instructions on the screen.

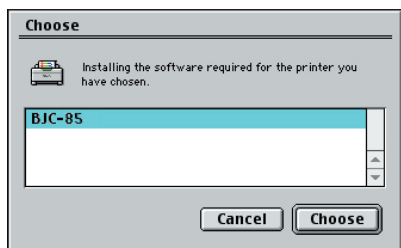


● Macintosh—USB Cable Users

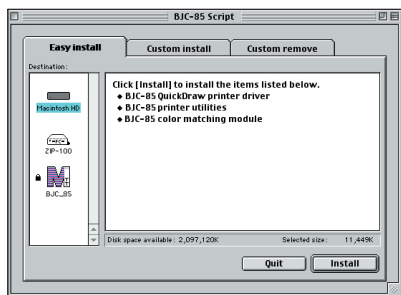
1. Turn on the computer.
2. Insert the printer driver CD-ROM into your CD-ROM drive. The following screen appears:



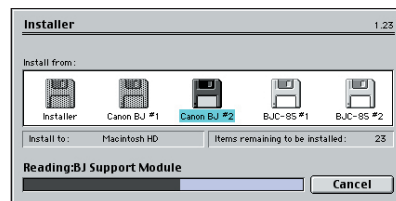
3. Click on the "Install BJC-85 Drivers." The License Agreement screen appears. Read the agreement and click **Agree** to continue.
4. The next screen asks you to choose the printer you are installing:



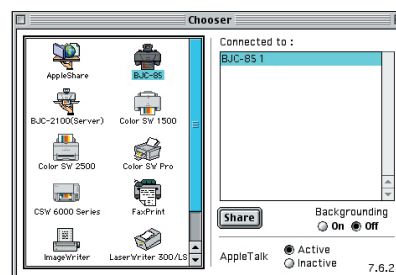
5. Click on the printer name to highlight it, and click **Choose**. This screen appears:



6. Click on **Install** to continue with Easy Install. The next screen reports the progress of the driver installation.



7. After driver installation, you must reboot the system. Click the **Restart** button when you see the "Installation was successful" screen.
8. After rebooting, you can proceed with other portions of the installation process.
9. Once installation is complete, be sure to go to the Chooser menu (under the Apple® sign) and select the BJC-85 as the default printer.





What's Next

● Online User's Manual

Your online *User's Manual* in Adobe® Acrobat® PDF format has been loaded on your hard drive. To view the online *User's Manual*:

- Click **Start**.
- Select Programs.
- Select Canon BJC-85.
- Select BJC-85 User's Manual.

IS-12 Color Image Scanner Cartridge (Optional)

Add the optional IS-12 Color Image Scanner Cartridge and your printer becomes a 360 dpi color sheetfed scanner—the perfect way to add images and graphics to reports and presentations.



For more detailed information, visit Canon's website at www.ccsi.canon.com.



Getting Help From Canon

Canon Computer Systems, Inc. offers a full range of customer technical support* options:

- For e-mail technical support, the latest driver downloads and answers to frequently asked questions (www.ccsi.canon.com)
- 24-hour, 7-day-a-week automated support for troubleshooting issues on most current products (**1-800-423-2366**)
- 24-hour, Fax-On-Demand System for product specifications and technical information (**1-800-526-4345**)
- Free technical support Monday–Saturday for products still under warranty** (**1-757-413-2848**)
- Technical support 7 days a week for products no longer under warranty for \$24.99 per call (**1-800-423-2366**), or for \$2.50 per minute, to a maximum of \$25.00 per call (**1-900-246-1200**)

NOTE: Within Canada, call for technical support 24 hours a day, 7 days a week (**1-800-OK-CANON**)

*Support program specifics subject to change without notice.

**Refer to individual product information for warranty details.



ENERGY STAR® Compliant

©2000 Canon Computer Systems, Inc. Canon, BCI, BJ, BJC, and Bubble Jet are trademarks of Canon Inc. All other product and brand names are trademarks or service marks of their respective owners. As an Energy Star® Partner, Canon U.S.A., Inc., has determined that this product meets the Energy Star® guidelines for energy efficiency.