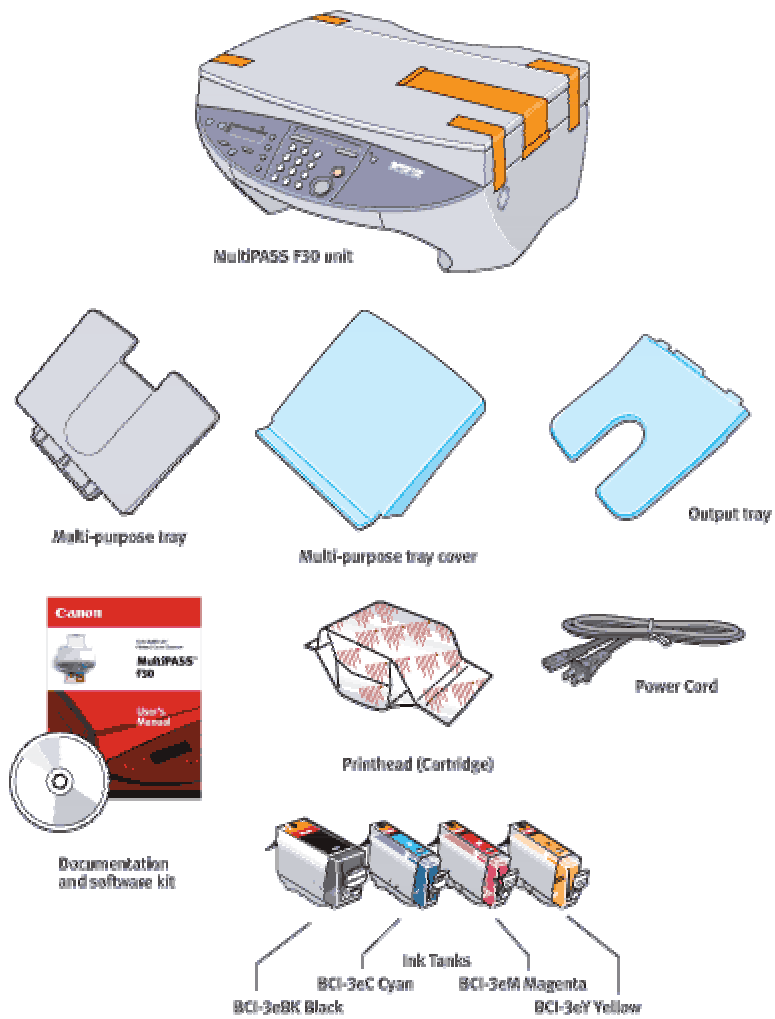


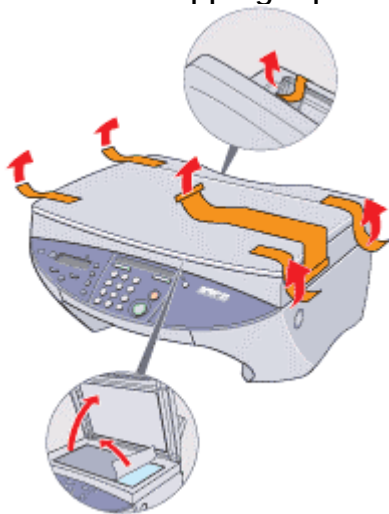
Step 1: Unpack the F30 MFP

1. Carefully remove all items from the box.

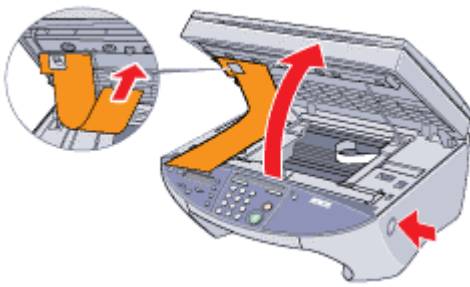


Step 2: Set up the F30 MFP

1. Remove shipping tape and protective shipping materials.

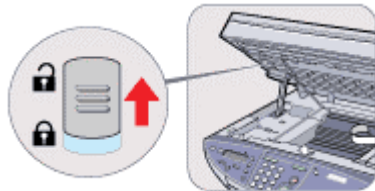


2. Open the scanning unit by pressing the Open button.



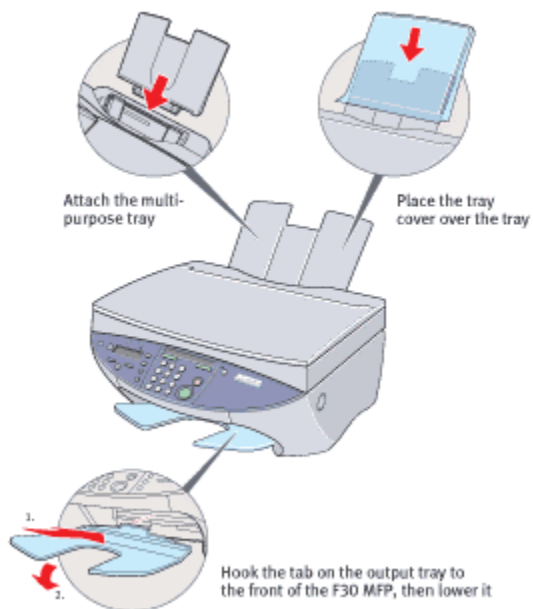
Remove the shipping material.

3. Unlock the scanner.



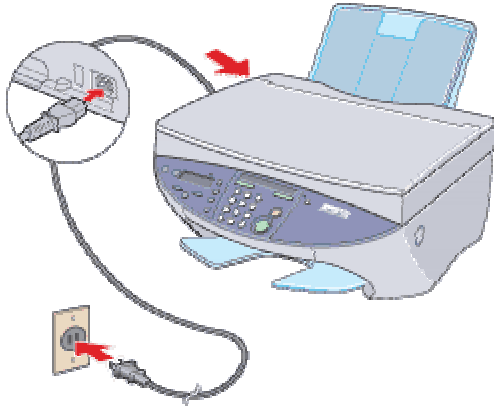
- Set the scanning lock to unlock.
- Press the scanning unit closed until it clicks.

4. Attach the trays:



Step 3: Prepare the F30 MFP

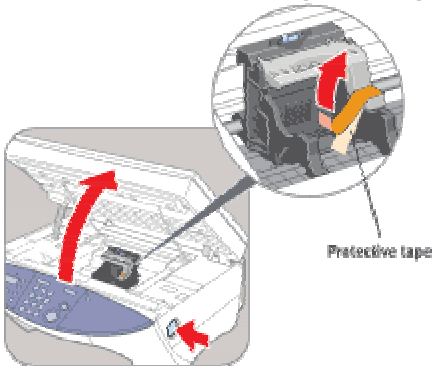
1. Connect the power cord and plug it into a socket.



2. If the F30 MFP does not power up when plugged in, press the ON/OFF button to turn it on.



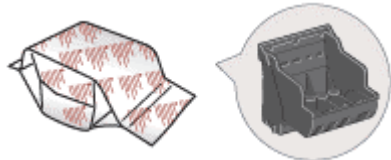
3. Open the scanning unit again. The printhead holder will move to the center position.



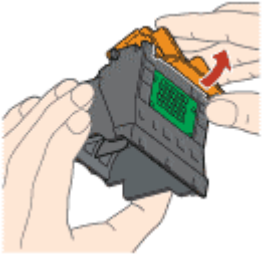
IMPORTANT: Remove the tape on the printhead holder lever.

Step 4: Install the Printhead

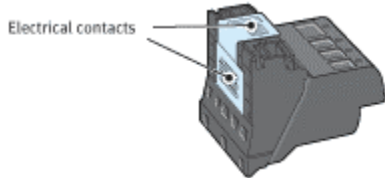
1. Remove the printhead from its package.



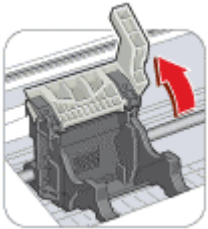
2. Turn the printhead over, then remove the orange protective cap.



NOTE: Do not touch the electrical contacts.

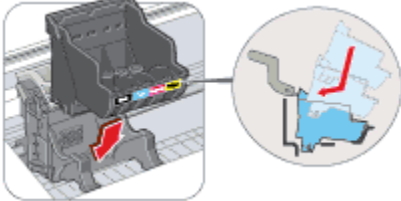


3. Raise the gray lock lever.

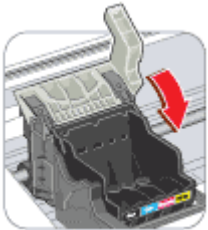


4. Gently slide the printhead into the holder. The printhead will rest at a slight angle.

Do not press it down.

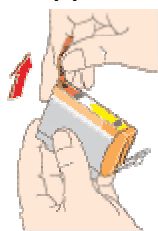


5. Lower the lock lever and gently press it down until it locks into place.



Step 5: Install the Ink Tanks

1. Pull the orange tab off the yellow ink tank (BCI-3eY), then remove and discard the plastic wrapper.



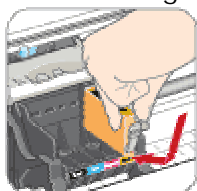
2. Twist off and discard the orange protective cap.



NOTE: To avoid spilling ink, never press on the sides of the ink tank.

3. Insert the ink tank into the correct slot (refer to the color guide on the printhead).

Press down gently until the ink tank locks into place.



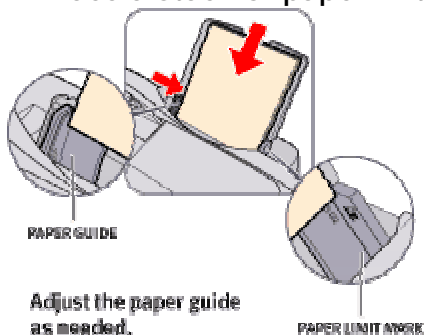
4. Insert the remaining three ink tanks into their assigned slots.



5. Press the scanning unit closed until it clicks.

Step 6: Align the Printhead

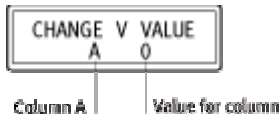
1. Place a stack of paper in the multi-purpose tray in preparation for printhead alignment.



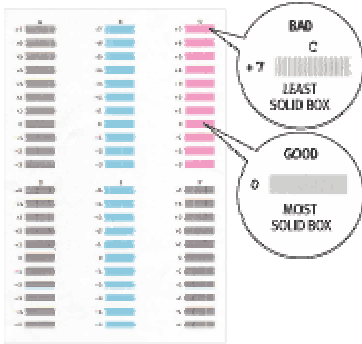
2. Once the printhead has been installed ALIGN PRINTHEAD/PRESS SET KEY will display on the LCD panel.

Press the  key once.

3. The F30 MFP will print a vertical line pattern, and the LCD message will change to:.




4. Review the vertical pattern printout, noting which box in Column A prints with the most solid image.

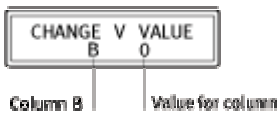


For the A Column printed pattern, use the   key to scroll to the value for the most solid box in the column.



NOTE: If you have difficulty on Column A when choosing between two patterns, use the larger value number.

Press  to select. CHANGE V VALUE will appear again, this time for Column B:

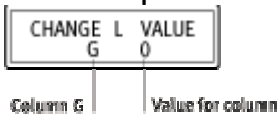


5. Repeat Step 4 for patterns B through F on the printout.

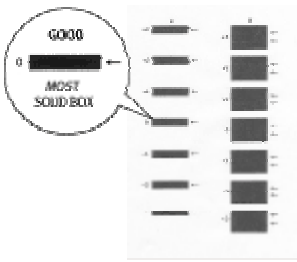
NOTE: if you have difficulty on Columns B or C when choosing between two patterns, use the larger value number. If you have difficulty when choosing between patterns for Columns D, E or F, use the smaller value number.

6. When values for all vertical columns on the printout have been entered, the LCD will display LAT LINE PATTERN, and a lateral (horizontal) pattern will print.

Once the pattern has printed, the LCD message will change to:



7. Review the lateral pattern printout, noting which solid box in Column G on the printout has the most solid image.



For the G column printed pattern, use the   keys to scroll to the value with the most solid box in the column.

NOTE: If you have difficulty on Column G when choosing between two patterns, use the smaller value number.

Press  to select.

8. Repeat Step 7 for Column H on the printout.

9. When printhead alignment is complete, the F30 MFP will return to standby mode.

Step 7: Install the Software (USB cable only)

NOTE: Windows 98, Me and 2000 only support the use of a USB cable.

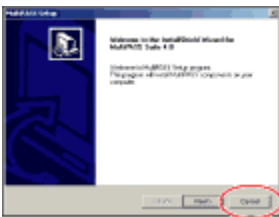
IMPORTANT: DO NOT connect the F30 MFP to your computer until prompted, or the computer may attempt to install the software before the unit is ready.

1. Turn the F30 MFP on if not on already.

ON/OFF button



Click CANCEL if you see a screen that says "New Hardware Found," "Update Device Driver Wizard," or "Add New Hardware Wizard."



2. With your PC on, close any open application including virus checkers.

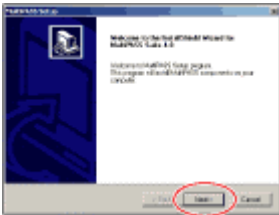
3. Insert the MultiPASS Suite Software CD-ROM into the CD-ROM drive. The setup program should run automatically.

NOTE: If the setup program does not run, click START, then RUN, then type D:\csplash.exe, where D is your CD-ROM drive.

4. When the main menu appears, click Install MultiPASS Suite.

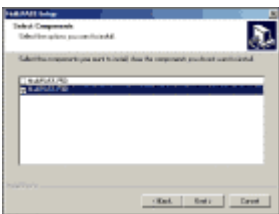


5. Read the Welcome screen, then click Next.



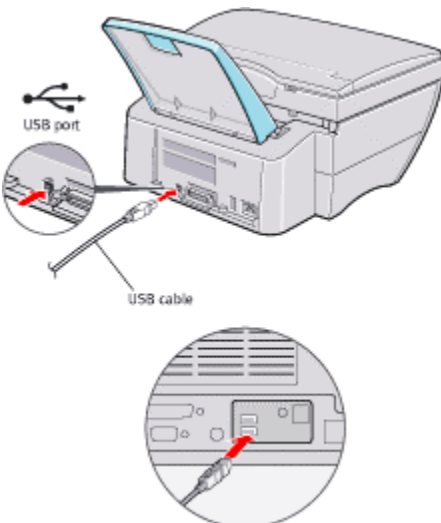
6. Read the License Agreement. If you agree to its terms, click YES. If you do not agree, click NO. You will not be allowed to continue the installation process.

7. Select the MultiPASS F30 for installation.



Continue to follow the on-screen instructions.

8. When prompted, connect one end of the USB cable (not included) to the computer and the other end to the F30 MFP, so it can be automatically detected.



Once the USB cable is connected, if a system message appears indicating the system driver is being installed, wait until the installation process is completed then click YES to continue.

9. Continue to follow on-screen instructions to complete the installation process.

10. When installation is complete, you will need to restart your PC before using the MultiPASS Suite software. If your PC does not restart automatically, restart it manually.

NOTE: Remember to register your product to ensure product support. The serial number is located on the back of the F30 MFP, above the parallel port.

Step 7: Install the Software (Parallel cable only)

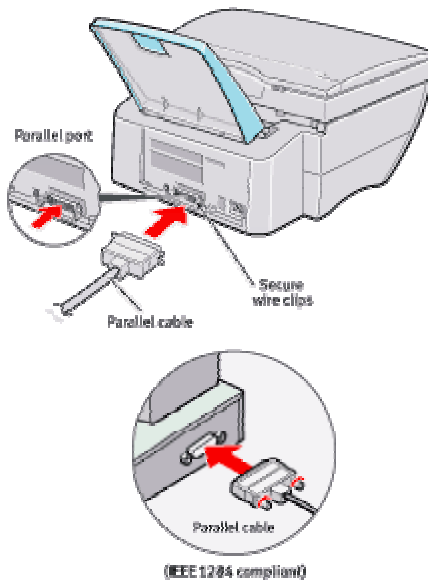
NOTE: Windows 95, 98, Me, NT 4.0 and 2000 support the use of an IEEE 1284 parallel printer cable.

IMPORTANT: DO NOT connect the F30 MFP to your computer until prompted, or the computer may attempt to install the software before the unit is ready.

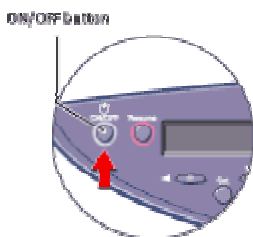
1. Be sure both the F30 MFP and the PC are turned on before continuing...



2. Connect one end of a parallel cable (not included) to the computer, the other to the F30 MFP.

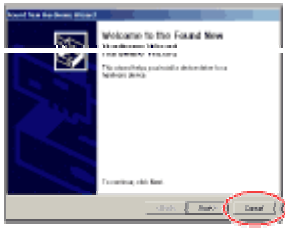


3. Turn on both the F30 MFP and your PC.



With your PC on, close any open applications, including virus checkers.

Click CANCEL if you see a screen that says "New Hardware Found," "Update Device Driver Wizard" or "Add New Hardware Wizard."



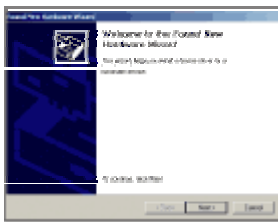
4. Insert the MultiPASS Suite Software CD-ROM into the CD-ROM drive. The setup program should run automatically.

NOTE: If the setup program does not run, click START, then RUN, then type D:\csplash.exe, where D is your CD-ROM drive.

5. When the main menu appears, click Install MultiPASS Suite.



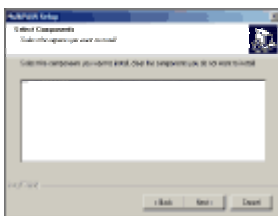
6. Read the Welcome screen, then click NEXT.



7. Read the License Agreement.

If you agree to its terms, click YES. If you do not agree, click NO. You will not be allowed to continue the installation process.

8. Select the MultiPASS F30 for installation.



Continue to follow the on-screen instructions.

9. When installation is complete, you will need to restart your PC before using the MultiPASS Suite software. If your PC does not restart automatically, restart it manually.

NOTE: Remember to register your product to ensure product support. The serial number is located on the back of the F30 MFP, above the parallel port.