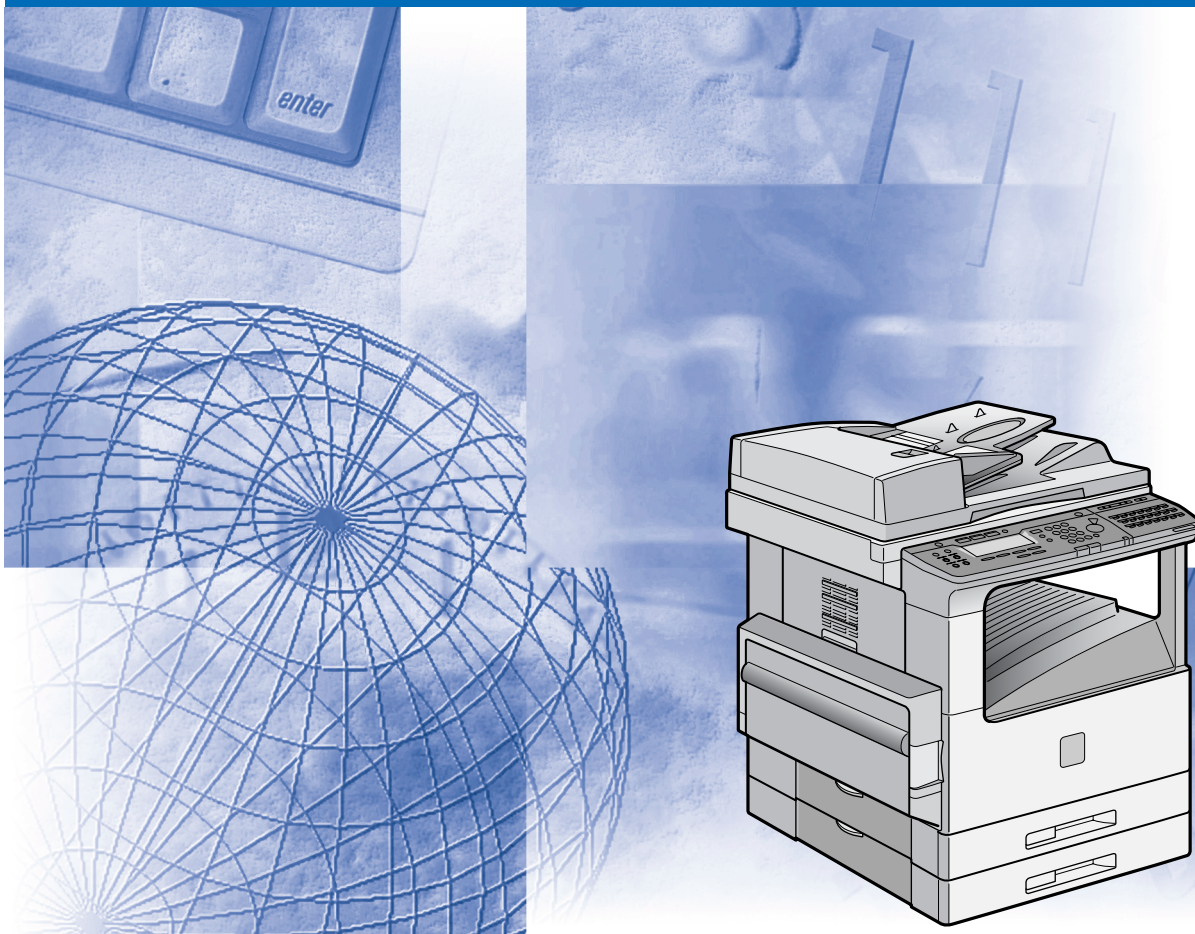


# Canon

## imageCLASS 2300

### Remote UI Guide



Please read this guide before operating this equipment.  
After you finish reading this guide, store it in a safe place for future reference.

ENG

# **imageCLASS 2300**

## **Remote UI Guide**



# Manuals for the Machine

The manuals for this machine are divided as follows. Please refer to them for detailed information. Some of the manuals listed below are only supplied with the Network Model of this machine.



Guides with this symbol are printed manuals.



Guides with this symbol are PDF manuals included on the accompanying CD-ROM.

- **Installing and Setting Up the Machine**

## Set-Up Sheet for the Machine



- **Network and Printer Settings**

## Set-Up Sheet for Networking and Printing



- **Basic Operations**

## Basic Guide



- **Machine Settings**
- **Troubleshooting**

## Reference Guide



- **Copying Instructions**

## Copying Guide



- **Fax Instructions**

## Facsimile Guide



- **Sending Instructions**

## Sending Guide



- **Remote User Interface Instructions**

## Remote UI Guide (This Document)



- **Network Connectivity and Setup Instructions**

## Network Guide



- **PCL Printer Instructions**

## PCL Printer Guide



- **PCL Printer Driver Installation and Instructions**

## PCL Driver Guide



- **Fax Driver and Cover Sheet Editor Installation and Instructions**

## Fax Driver Guide with Cover Sheet Editor





# How This Manual Is Organized

**Chapter 1** Using the Remote UI

**Chapter 2** Remote UI Functions

**Chapter 3** Appendix

Includes the Glossary and index.

# Contents

---

<b>Preface</b> .....	<b>v</b>
<b>How to Use This Manual</b> .....	<b>v</b>
Symbols Used in This Manual .....	v
Keys Used in This Manual .....	v
Displays Used in This Manual .....	vi
Abbreviations Used in this Manual .....	vi
<b>Legal Notices</b> .....	<b>vii</b>
Trademarks .....	vii
Copyright .....	vii

## Chapter 1 Using the Remote UI

---

<b>Overview of the Remote UI</b> .....	<b>1-2</b>
<b>System Requirements</b> .....	<b>1-5</b>
<b>Before You Start the Remote UI</b> .....	<b>1-6</b>
<b>Starting the Remote UI</b> .....	<b>1-7</b>

## Chapter 2 Remote UI Functions

---

<b>Device Status and Information Display</b> .....	<b>2-2</b>
<b>Canceling Jobs and Viewing the Job Log</b> .....	<b>2-4</b>
Canceling Print Jobs .....	2-4
Viewing the Print Log .....	2-6
Viewing the Activity Log .....	2-7
<b>Viewing and Editing Device Settings</b> .....	<b>2-8</b>
<b>Viewing and Editing the Address Book</b> .....	<b>2-11</b>
Viewing and Editing One-Touch or Coded Dialing .....	2-11
Importing/Exporting the Address Book .....	2-14
Importing the Address Book Data .....	2-15
Exporting the Address Book Data .....	2-18
<b>Viewing Additional Information</b> .....	<b>2-20</b>

## Chapter 3 Appendix

---

<b>Glossary</b> .....	<b>3-2</b>
<b>Index</b> .....	<b>3-4</b>

# Preface

Thank you for purchasing the Canon imageCLASS 2300. Please read this manual thoroughly before operating the machine in order to familiarize yourself with its capabilities, and to make the most of its many functions. After reading this manual, store it in a safe place for future reference.

## How to Use This Manual

---

### Symbols Used in This Manual

The following symbols are used in this manual to explain procedures, restrictions, handling precautions, and instructions that should be observed for safety.



#### IMPORTANT

Indicates operational requirements and restrictions. Be sure to read these items carefully in order to operate the machine correctly, and to avoid damage to the machine.



#### NOTE

Indicates a clarification of an operation, or contains additional explanations for a procedure. Reading these notes is highly recommended.

### Keys Used in This Manual

The following buttons are a few examples of how keys to be pressed are expressed in this manual:


- Buttons on Computer Operation Screens: [Button Name]

Example:

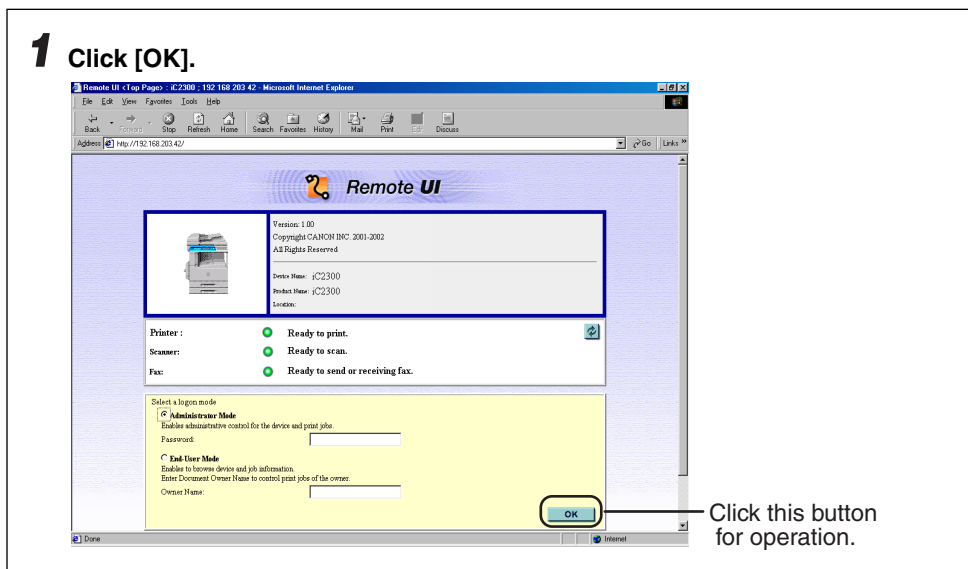
[Job Status]

[OK]

## Displays Used in This Manual

The keys which you should press are marked with , as shown below.

When multiple keys or buttons can be pressed, they will be highlighted and mentioned in the order in which they should be pressed.



## Abbreviations Used in this Manual

In this manual, product names and model names are abbreviated as follows:

Microsoft® Windows® 95 operating system:	Windows 95
Microsoft® Windows® 98 operating system:	Windows 98
Microsoft® Windows® Millennium Edition operating system:	Windows Me
Microsoft® Windows NT® operating system:	Windows NT
Microsoft® Windows® 2000 operating system:	Windows 2000
Microsoft® Windows® XP operating system:	Windows XP

# Legal Notices

---

## Trademarks

Canon, the Canon logo, and imageCLASS are trademarks of Canon Inc.

Microsoft, Windows and Windows NT are registered trademarks of Microsoft Corporation in the United States and other countries.

Netscape, Netscape Communicator and Netscape Navigator are trademarks of Netscape Communications Corporation.

Macintosh and Mac OS are trademarks of Apple Computer, Inc. (US)

Other company or product names used in this manual and not included in the list above are trademarks of those companies and may be registered in certain jurisdictions.

## Copyright

Copyright 2003 by Canon Inc. All rights reserved

No part of this publication may be reproduced or transmitted in any form or by any means, electronic or mechanical, including photocopying and recording, or by any information storage or retrieval system without the prior written permission of Canon Inc.





# Using the Remote UI

# 1

## CHAPTER

This chapter describes the features of the Remote UI, and how to start it.

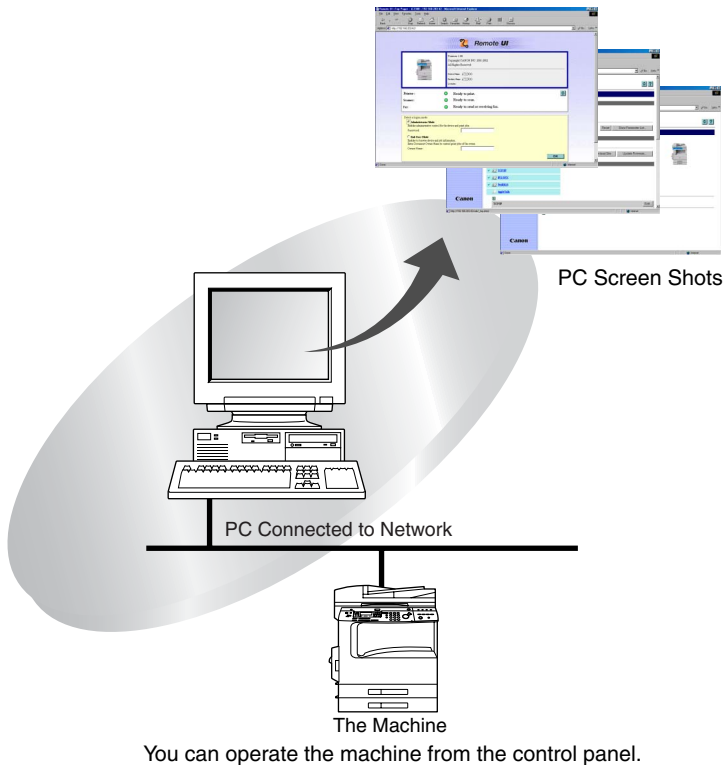
---

Overview of the Remote UI . . . . .	1-2
System Requirements . . . . .	1-5
Before You Start the Remote UI . . . . .	1-6
Starting the Remote UI . . . . .	1-7

# Overview of the Remote UI

The Remote UI (User Interface) software allows you to access and manage a machine connected to a network using a web browser. If you specify the address of the machine in your web browser, the Remote UI screen appears from where you can manage and control the machine.

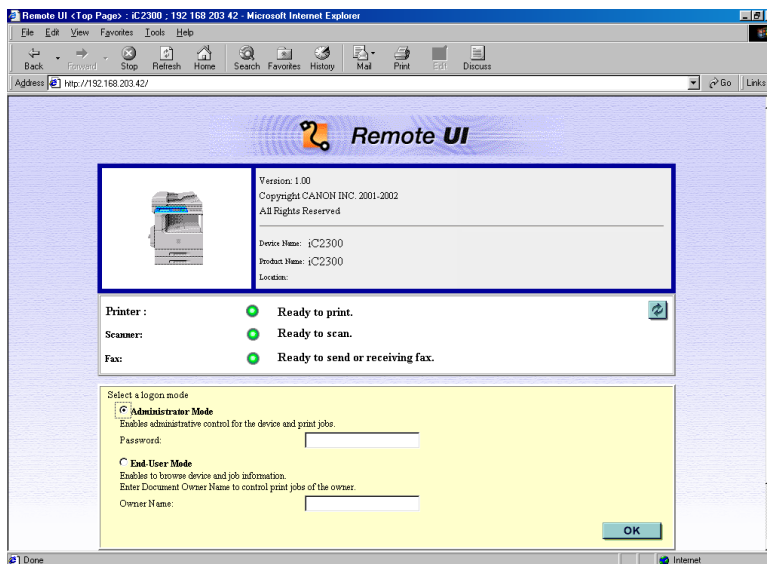
The machine is supplied with preinstalled web server software that enables you to use the Remote UI. You do not need any special software, other than a web browser, installed on your computer. You can use the Remote UI when you start your web browser by entering the IP (Internet Protocol) address for the machine.



## ■ Checking the [Device Status] from a network computer

The Remote UI enables you to access the machine via a network, enabling you to display the current status for the machine, the status of all information, and job processing. You can manage the machine from a personal computer connected to the network, without having to perform operations on the machine itself.

When you specify the IP address of the machine with your web browser, the Remote UI top page appears as shown below.



After you have selected the logon mode, the [Device Manager] page is displayed. In the left frame of this page, the following buttons to access other pages of the Remote UI will be displayed.



To Top page

Takes you to the Remote UI top page.

Displays the current status of the machine, and the logon form for selecting the mode to use.

Device Manager

Displays the current status of the machine, information about the machine, various features, network settings and counter.

Job Manager

Displays the current status of print jobs queued in the machine's memory. It also displays the job log with information about jobs that have already been processed by the machine.

Device Settings

Displays a list of settings for the machine.

**Address Book**

Displays one-touch speed or coded dialing data (fax numbers, e-mail addresses, FTP server addresses, destination names, etc.) registered on the machine.

**Support Links**

Displays links to support information, such as the online manual.



Updates or refreshes the currently displayed screen with the latest information. Information is not updated automatically. When you click on this button, the latest information from the machine is acquired.



Displays the online help for the Remote UI. Click on this button to access detailed information about the Remote UI.



Brings you to the top of the page.

### ■ Set and control the machine from a PC

The Remote UI enables you to view and cancel the print jobs stored on the machine. If you log on using the [Administrator Mode], you can also adjust the machine settings from a PC without using the control panel on the machine.

# System Requirements

---

The system requirements for the Remote UI are as follows:

## ■ Windows

- OS
  - Microsoft Windows NT Workstation 4.0 + Service Pack 5 or later
  - Microsoft Windows 95/98
  - Microsoft Windows 2000 Professional
  - Microsoft Windows Me
  - Microsoft Windows XP
- Web Browser
  - Microsoft Internet Explorer 4.01 Service Pack 1 or later
  - Netscape Communicator/Navigator 4.7 or later, except Netscape Communicator 6

## ■ Macintosh

- OS
  - Mac OS 8.6 or later, up to Mac OS X Classic
- Web Browser
  - Microsoft Internet Explorer 4.0 or later

### NOTE

Apart from the software listed above, no other software, such as a web server, is necessary. (The machine includes its own web server software.)

# Before You Start the Remote UI

---

Before you start the Remote UI, check the following:

## ■ Network Settings

Select [Network Settings] from the [System Settings] menu from the [Additional Functions] screen, and verify the IP address of the machine. If you do not know the IP address, consult your network administrator. (See Chapter 2, "Using a TCP/IP Network (Windows/UNIX)," in the *Network Guide*.)

## IMPORTANT

- Connection via a proxy server is not possible. If your system environment has a proxy server, perform the following settings. (Settings vary according to the system environment, so please consult with your network administrator.)
  - Enter the device IP address into Exceptions in the web browser proxy server settings.
  - Set your web browser to enable all cookies.
- If the control panel of the machine is being used, you cannot perform the same operations from the Remote UI.
- If multiple Remote UIs are running simultaneously, the latest setting made is enabled. It is recommended that only one Remote UI be running at a time.

# Starting the Remote UI

To start the Remote UI, follow the procedure described below.

1

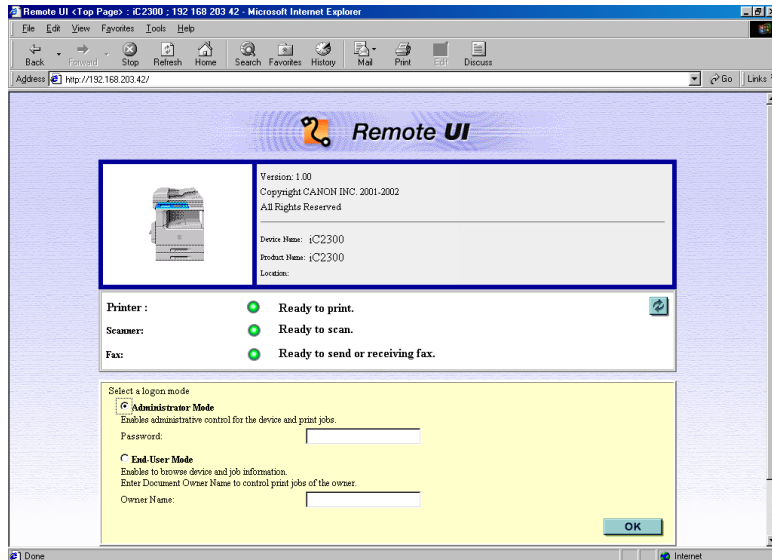
Using the Remote UI

## 1 Start your web browser.

## 2 Enter the URL in the [Address] or [Location] field.

http://<the IP address of the device>/

The Remote UI screen loads.



## 3 Select the logon mode.

Administrator Mode: Select the radio button → enter the password.

End-User Mode: Select the radio button → enter the owner name.

## 4 Click [OK].

The [Device Manager] - [Status] page appears.





# Remote UI Functions

# 2

## CHAPTER

This chapter describes the various functions of the Remote UI, along with brief descriptions of how to use them.

---

Device Status and Information Display . . . . .	2-2
Canceling Jobs and Viewing the Job Log . . . . .	2-4
Canceling Print Jobs . . . . .	2-4
Viewing the Print Log . . . . .	2-6
Viewing the Activity Log . . . . .	2-7
Viewing and Editing Device Settings . . . . .	2-8
Viewing and Editing the Address Book . . . . .	2-11
Viewing and Editing One-Touch Speed or Coded Dialing . . . . .	2-11
Importing/Exporting the Address Book . . . . .	2-14
Viewing Additional Information . . . . .	2-20

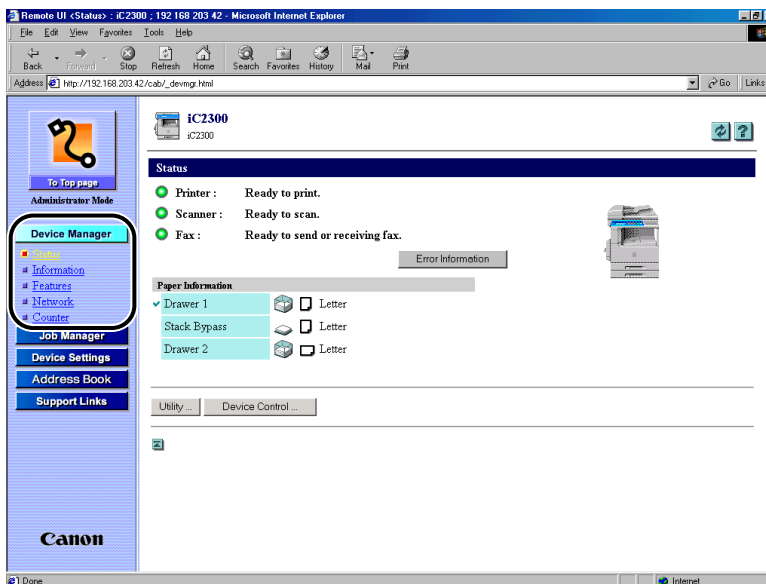
# Device Status and Information Display

Using the Remote UI (User Interface), you can view the current status of the machine, such as the amount and size of paper in the drawers, or other status information. You can also view information about the device administrator, the installation location and various machine settings.

## NOTE

If you change the IP (Internet Protocol) address on the web browser (Remote UI), the change will not be reflected on the display of the machine. You can confirm the change of the IP address by checking "VIEW IP ADDRESS" under the Network Settings menu, or by printing the User Data List.

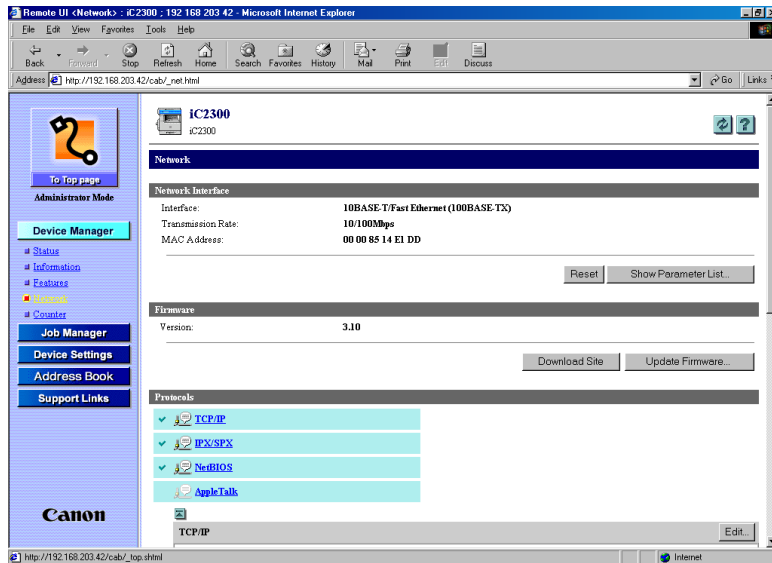
- 1 Click [Device Manager] → select the item to display from the menu that appears under [Device Manager].



[Status]: Displays the current status of the machine and paper information, such as the amount and size of paper in the drawers, and allows you to view error information. If you are using the [Administrator Mode], you can also use the [Utility] and [Device Control] buttons to check or adjust settings.

- [Information]: Displays information about the machine, including information about the administrator, the display language used on the Remote UI, and any security settings that have been enabled. If you are using [Administrator Mode], you can also adjust these settings.
- [Features]: Displays information about various features of the machine, and total and available memory.
- [Network]: Displays information about the Network Interface, firmware version and any network protocols that are enabled. If you are using [Administrator Mode], you can also adjust these settings.
- [Counter]: Displays the number of pages that has been output from the machine.

(Example) When [Network] is selected:



# Canceling Jobs and Viewing the Job Log

The Remote UI enables you to cancel print jobs queued in the machine's memory. It also allows you to view the print log of processed jobs. The [Job Manager] page includes the following sections:

- Print Job
- Print Log
- Activity Log

## Canceling Print Jobs

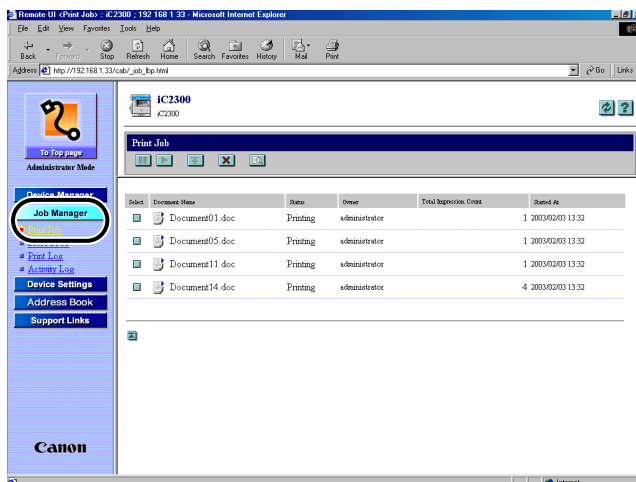
You can use the Remote UI to cancel print jobs that are being processed by the machine, or waiting to be printed.

### NOTE

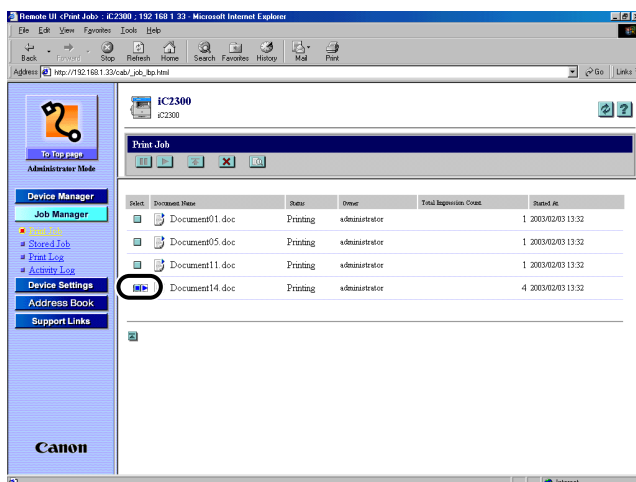
- If you log on in the [End-User Mode], you will only see jobs for which you have owner privileges.
- If the "Permit End-user's Job Operation" option in the [Security] section of the [Device Manager] - [Information] page is set to 'No', you will not be able to adjust the job settings when logged on in the [End-User Mode].

## 1 Click [Job Manager] → select [Print Job] from the menu that appears under [Job Manager].

A list of [Print Jobs] being processed by the machine appears.



## 2 Select the [☐] checkbox to the left of the job you want to cancel → click .



### IMPORTANT

The canceled job cannot be retrieved.



## NOTE

You cannot cancel a job when the [Print Log] is displayed.

# Viewing the Print Log

The Remote UI enables you to view the [Print Log] of processed jobs.

1

Click [Job Manager] → select [Print Log] from the menu that appears under [Job Manager].

The [Print Log] appears to display information about jobs that have already been processed by the machine.

Document Name	Owner	Total Impression Count	Time	Print Result
Document11.doc	administrator	1	2003/02/04 12:44	OK
Document05.doc	administrator	1	2003/02/04 12:44	OK
Document01.doc	administrator	1	2003/02/04 12:44	OK
Document14.doc	administrator	4	2003/02/04 10:58	OK
Document01.doc	administrator	1	2003/02/04 10:58	OK
		8	2003/02/04 10:50	OK
Document05.doc	administrator	6	2003/02/04 10:16	OK
Document01.doc	administrator	1	2003/02/04 10:15	OK
Document01.doc	administrator	-	2003/02/04 10:13	Cancel
Document01.doc	administrator	1	2003/02/04 10:03	OK
Spanish.bmp		1	2003/02/03 09:22	OK
		1	2003/02/03 08:28	OK
Nena	Administrator	1	2003/02/02 13:58	OK



## NOTE

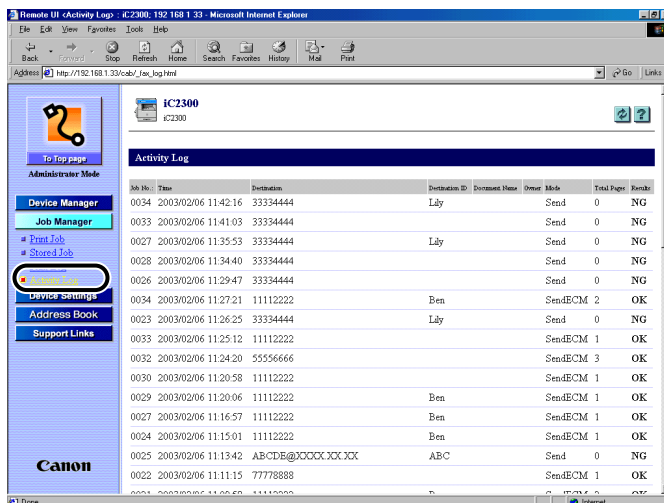
If the menu is already displayed, you can skip this step.

# Viewing the Activity Log

The Remote UI enables you to view the [Activity Log] of fax jobs.

- 1 Click [Job Manager] → select [Activity Log] from the menu that appears under [Job Manager].

The [Activity Log] appears to display information about fax jobs that have already been processed or are waiting to be processed by the machine.



Job No.	Time	Destination	Destination ID	Document Name	Owner	Mode	Total Pages	Result
0034	2003/02/06 11:42:16	33334444				Send	0	NG
0033	2003/02/06 11:41:03	33334444				Send	0	NG
0027	2003/02/06 11:35:53	33334444				Send	0	NG
0028	2003/02/06 11:34:40	33334444				Send	0	NG
0026	2003/02/06 11:29:47	33334444				Send	0	NG
0034	2003/02/06 11:27:21	11112222	Ben			SendECM	2	OK
0023	2003/02/06 11:26:25	33334444				Send	0	NG
0033	2003/02/06 11:25:12	11112222				SendECM	1	OK
0032	2003/02/06 11:24:20	55556666				SendECM	3	OK
0030	2003/02/06 11:20:58	11112222				SendECM	1	OK
0029	2003/02/06 11:20:06	11112222	Ben			SendECM	1	OK
0027	2003/02/06 11:16:57	11112222	Ben			SendECM	1	OK
0024	2003/02/06 11:15:01	11112222	Ben			SendECM	1	OK
0025	2003/02/06 11:13:42	ABCDE@XXXX.XXX.XXX	ABC			Send	0	NG
0022	2003/02/06 11:11:15	77778888				SendECM	1	OK
0021	2003/02/06 11:05:50	11112222				Send	0	OK



## NOTE

If the menu is already displayed, you can skip this step.



# Viewing and Editing Device Settings

The Remote UI can be used to view and edit some of the settings for the machine.



## NOTE

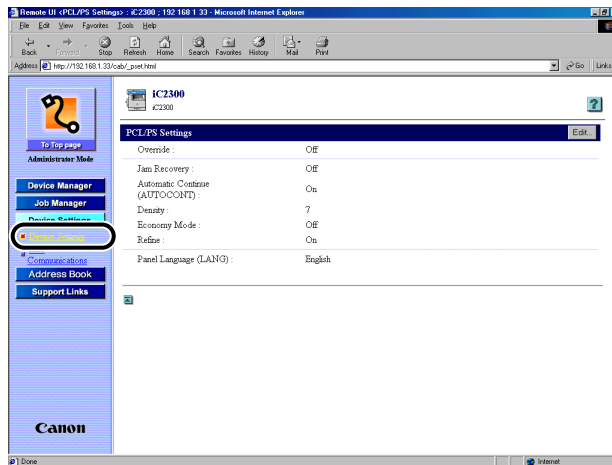
You can edit the [Device Settings] only when you are using the [Administrator Mode].

### 1 Click [Device Settings] → select the item to display from the menu that appears under [Device Settings].

Device Settings: Changes the printer settings.

Line Communications: Changes the settings for Fax, E-mail and I-Fax functions.

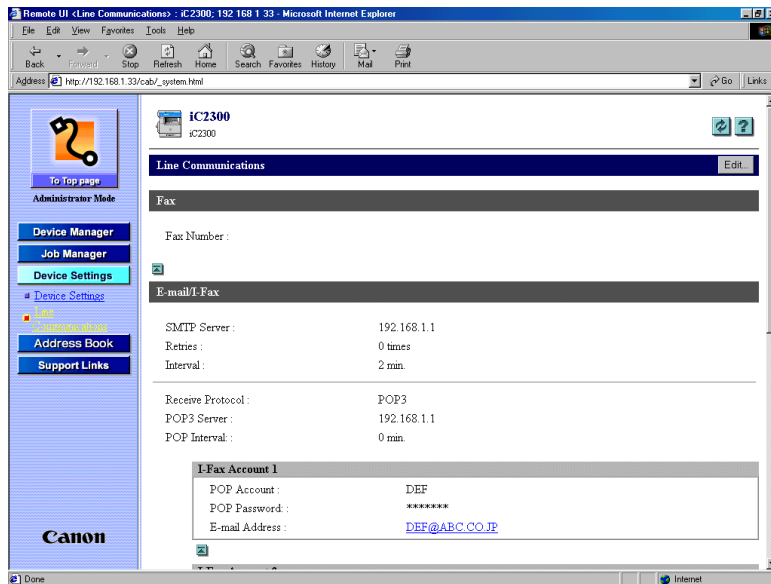
(example) When [PCL/PS Settings] is selected:



## IMPORTANT

PS settings are not available for imageCLASS 2300.

(example) When [Line Communications] is selected:



The current settings are displayed for the selected item.

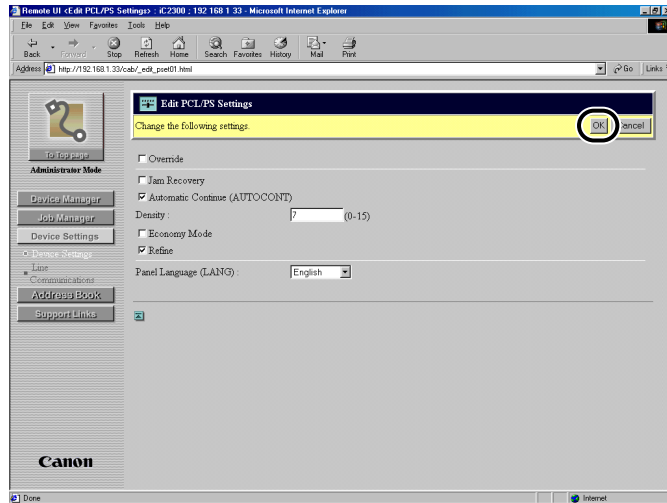
## 2 To edit the settings, click [Edit].

If you have selected [PCL/PS Settings], the [Edit PCL/PS Settings] screen appears.

If you have selected [Line Communications], the [Edit Line Communications] screen appears.

### 3 Set each of the items as necessary → click [OK].

If you want to cancel the changes to the settings, click [Cancel].



# Viewing and Editing the Address Book

The Remote UI allows you to make additions and changes to each item of the [Address Book]. The [Address Book] page includes the following sections:

- One-touch Speed Dialing
- Coded Dialing (Coded Speed Dialing)
- Import/Export

## Viewing and Editing One-Touch Speed or Coded Dialing

You can use the Remote UI to view and edit the one-touch speed or coded dialing numbers. You can delete and register addresses, or make changes to the addresses already registered.

- You can edit the [Address Book] only when you are using the [Administrator Mode].
- You cannot edit the optional settings for one-touch speed or coded dialing numbers.

### 1 Click [Address Book] → select [One-touch Speed Dialing] or [Coded Dialing] that appears under [Address Book].

A list of one-touch speed or coded dialing numbers appears.



**NOTE**

- You can jump to the number you want to delete or edit by selecting the appropriate range of the numbers in the drop-down box on the upper right corner of the screen.
- You cannot edit or add group dialing nor program one-touch keys using the Remote UI. Only the numbers to the left of the check box is displayed without links.

**2**

To delete a one-touch speed or coded dialing number, select the ☐ checkbox to the right of the number to delete → click



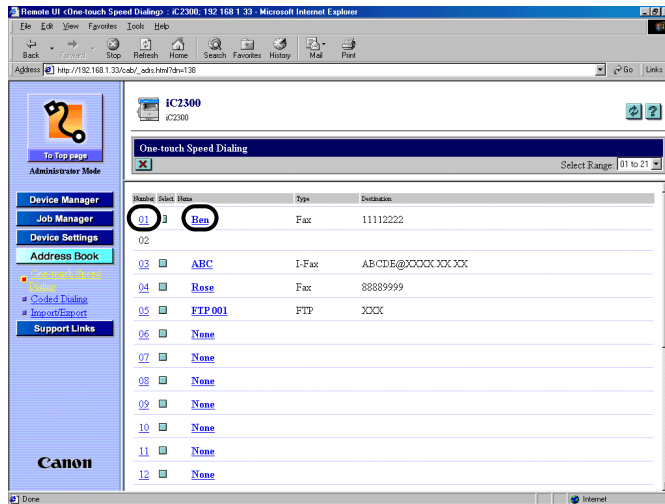
The selected number is deleted.

**NOTE**

You cannot recover the number once it is deleted.

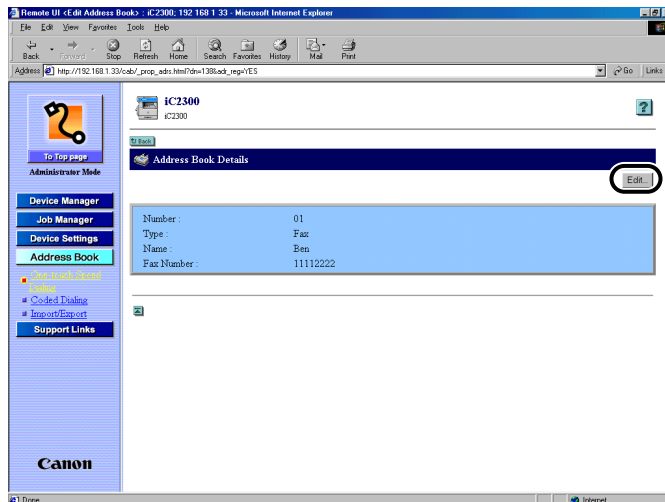
### 3 To view the information registered for one-touch speed or coded dialing numbers, click the number on the left side or the name.

If you want to add an address for [One-touch Speed Dialing] or [Coded Dialing], click any number for which [None] is displayed as the name.



The detailed information about the number appears.

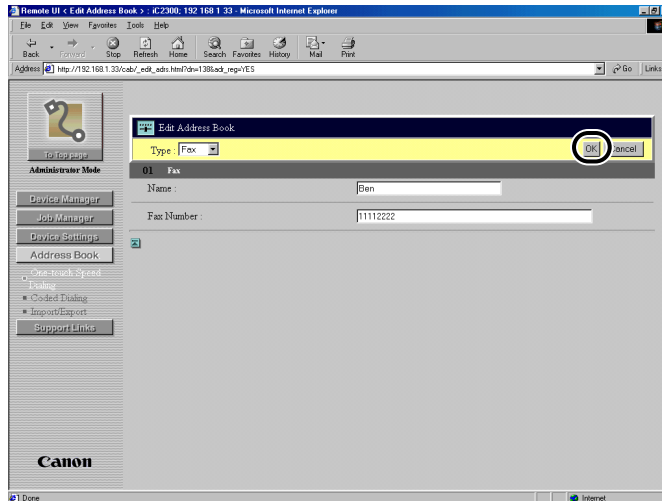
### 4 To edit the information, click [Edit].



#### NOTE

You cannot edit the optional settings for one-touch speed or coded dialing numbers.

## 5 To store the values you entered, click [OK].



To cancel editing, click [Cancel].

The values are stored and the [One-touch Speed Dialing] or [Coded Dialing] screen returns.

## Importing/Exporting the Address Book

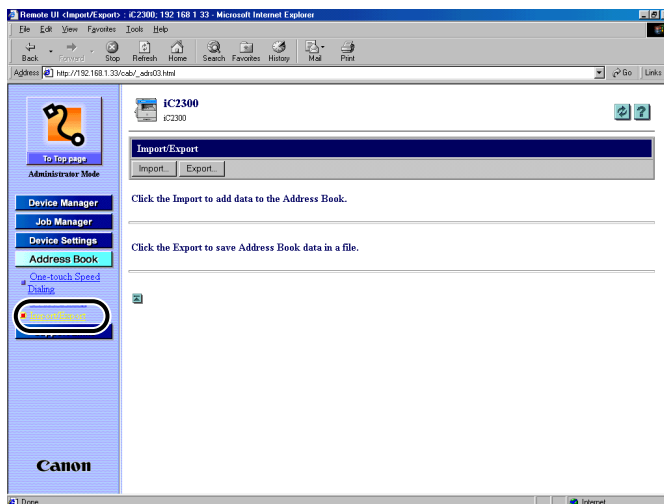
The Remote UI allows you to [Import/Export] the address book data.

### NOTE

- You cannot import or export group dialing and program one-touch key settings.
- The optional settings for [One-touch Speed Dialing] or [Coded Dialing] will not be exported. Also, be careful when importing a file to overwrite [One-touch Speed Dialing] or [Coded Dialing] settings of the machine because it will delete the optional settings already made.

## 1 Click [Address Book] → select [Import/Export].

The [Import/Export] screen appears.



### NOTE

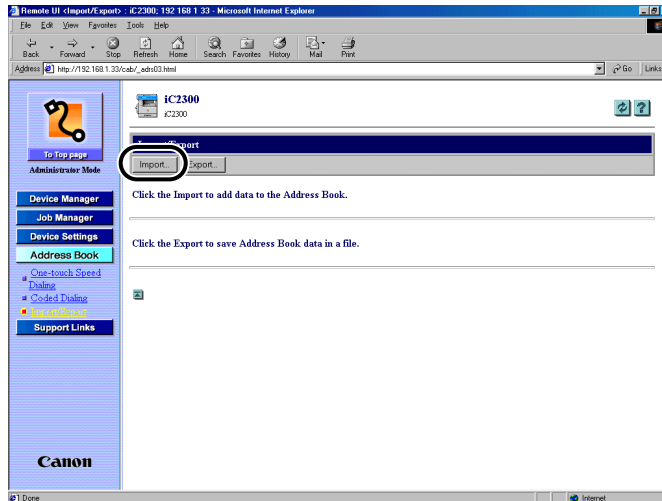
You can import/export address book data only when you are using the [Administrator Mode].

## Importing the Address Book Data

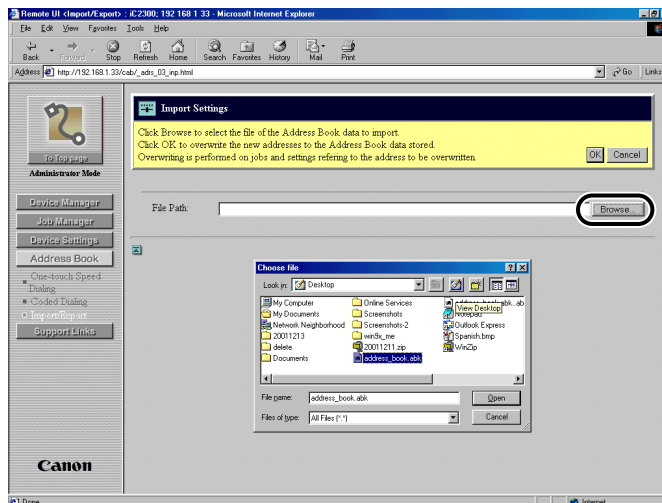
By pressing [Import] in the [Import/Export] screen, you can import the address book data from a file.



## 1 Click [Import].

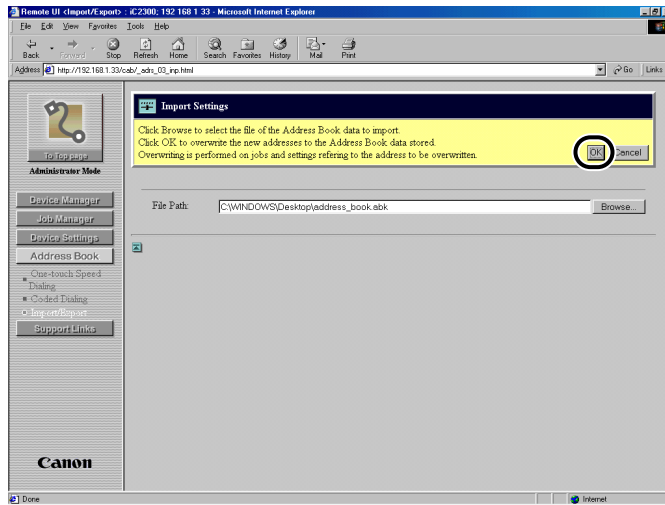


## 2 Click [Browse] to select an address book data file to be imported to the machine.

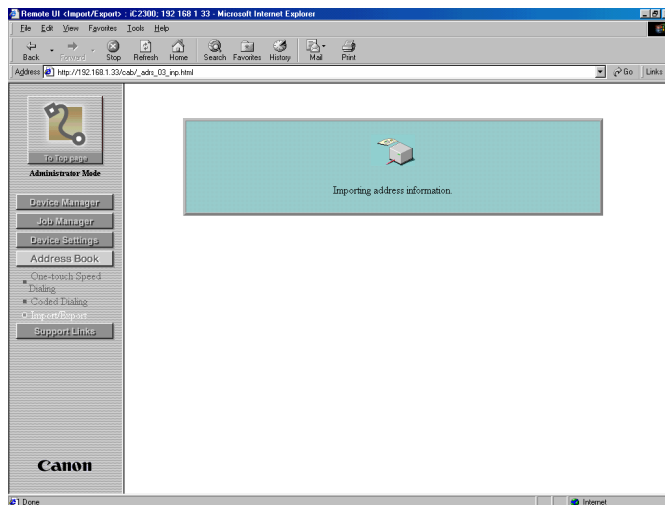


### 3 Click [OK] to import the file to the [Address Book].

If you want to cancel importing data, click [Cancel] to return to the [Import/Export] screen.



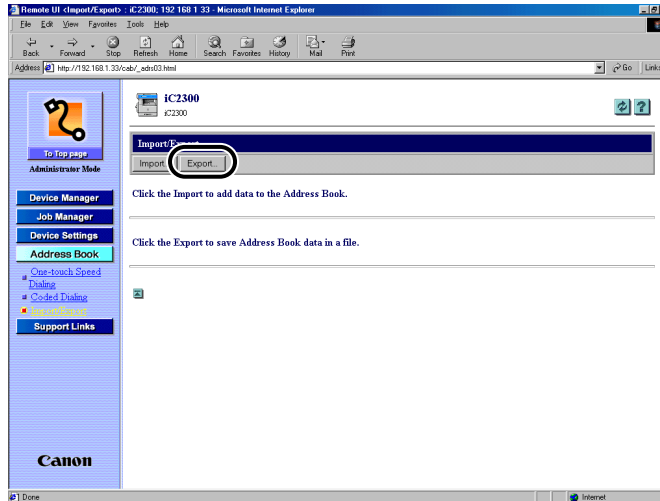
[Importing address information] will be displayed during the transfer.



## Exporting the Address Book Data

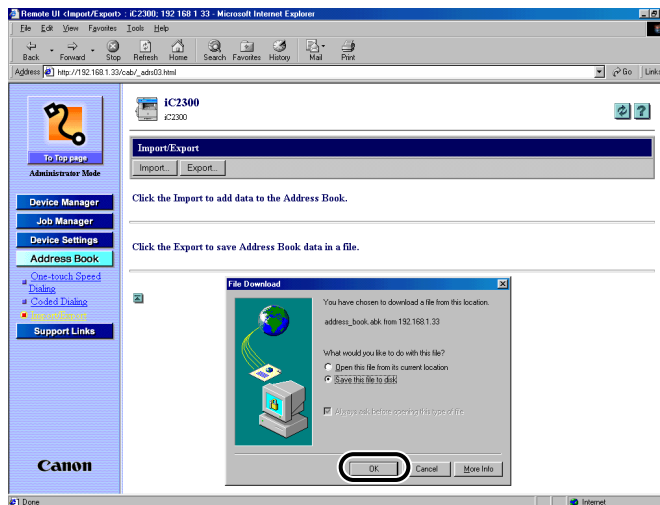
By pressing [Export] in the [Import/Export] screen, you can export the address book data from the machine and save it as a file.

### 1 Click [Export].

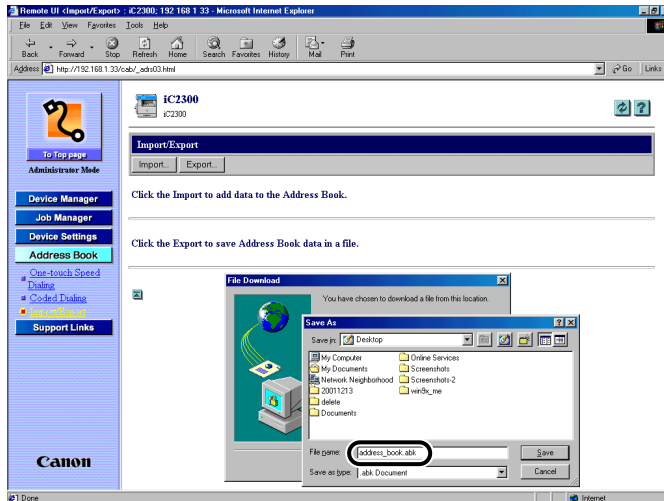


### 2 To download the file, click [OK].

If you want to cancel download, click [Cancel].

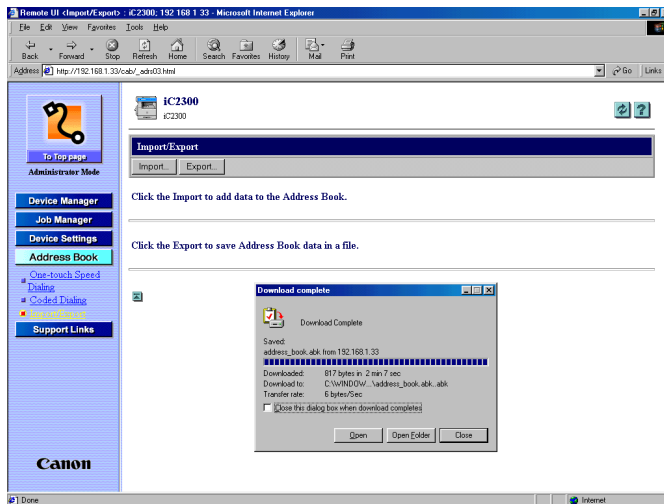


### 3 Enter the name of the file.



### 4 Click [Save] to store the address book data.

The machine exports the address book data.



# Viewing Additional Information

You can use the Remote UI to access additional information and help for your machine.

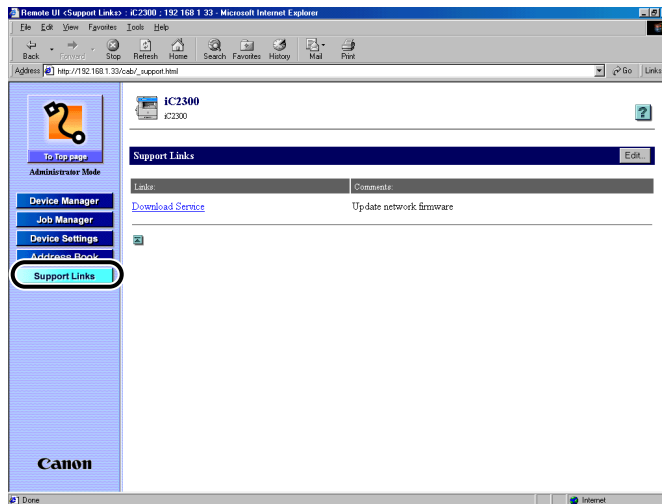


## NOTE

You may need a connection to the internet to access some of this additional information.

## 1 Click [Support Links].

A list of the various additional information resources appears.



## 2 Click on the item you want to access.



## NOTE

- You can specify up to three link destinations by clicking [Edit]:
  - Link 1
  - Link 2
  - Download Site
- The [Download Site] includes the URL for Canon's Download Service. [Link 1] and [Link 2] enable you to set the link destinations such as Help Desk and Manual.

# Appendix

# 3

## CHAPTER

This section contains the glossary and index.

---

Glossary .....	3-2
Index .....	3-4

# Glossary

---

## Cookie

A file left on a user's computer when the user visits a web site. A cookie allows the web site to recognize the user on subsequent visits. Cookies are generally used to enable a user to automatically sign on to certain web sites and to customize the features offered by such sites.

## Protocol

A set of rules that govern the transmission of data across a network. Examples of protocols are FTP, DHCP, BOOTP, RARP, IPP, and TCP/IP.

- FTP: File Transfer Protocol. A client-server protocol allowing a user to transfer files on one computer to and from another computer over a TCP/IP network. The File Transfer Protocol also governs the client program with which the user transfers files.
- DHCP: Dynamic Host Configuration Protocol. A protocol which automatically specifies the network settings of a client on a TCP/IP network. Many of the settings required to set up TCP/IP, which is the standard protocol of the Internet, can be made automatically.
- BOOTP: BOOTstrap Protocol. A protocol that enables a client machine to automatically obtain network setup information from a server over a TCP/IP network. BOOTP enables a client to automatically locate such information as the host name, domain name, and IP address, so that it is not necessary to create these items manually.
- RARP: Reserve Address Resolution Protocol. A protocol which associates a network adapter address (MAC address) with an Internet Protocol (IP) address.
- IPP: Internet Printing Protocol. A protocol used between a client and a print server for carrying out remote printing over the Internet.
- TCP/IP (Transmission Control Protocol/Internet Protocol): The protocol used to connect to the Internet and to wide area networks.

## Proxy server

A server that provides a cache of files available on remote servers that are slow or expensive to access. The term, "proxy server," normally refers to a World Wide Web server that, on receiving a URL, tries to supply the requested file from its cache. If it cannot locate the file there, the proxy server would bring it from the remote server and also saves a copy in its cache so that the next request can be obtained locally.

**Remote UI**

Remote User Interface. Many functions that are done physically at the Canon machine's control panel can be done via software at a networked computer using a web browser, such as Netscape Navigator/Communicator or Microsoft Internet Explorer.

**Spool**

Simultaneous Peripheral Operations On-Line. Spooling means putting jobs in a buffer, which is a special area in memory or on a disk. Because devices access data at different rates, the buffer provides a waiting station where the data can wait until the device for which it is meant is ready to access it.

**URL**

Uniform Resource Locator. A standard way of specifying the location of an object, usually a web page, on the Internet. The URL for a web page would look something like this: "http://www.w3.org/default.html." Here, "http:" indicates that a web page is being accessed, "www.w3.org" is the address of the server containing the web page, and "default.html" is the file name under which the web page is stored on the server.



# Index

## A

Address, 1-7  
Address Book, 2-11  
    Coded Dialing, 2-8, 2-11  
    Exporting the Address Book Data, 2-18  
    Importing the Address Book Data, 2-15  
    One-Touch Speed Dialing, 2-11  
Address Book button, 1-4  
Administrator Mode, 1-4, 1-7, 2-2, 2-3, 2-8

## C

Canceling Jobs, 2-4  
Canon's Download Service, 2-20  
Cookies, 1-6, 3-2  
Counter, 2-3

## D

Device, 2-2, 2-8  
Device Control button, 2-2  
Device Manager button, 1-3  
Device Settings, 2-8  
Device Settings button, 1-3  
Device Status, 2-2  
Device Status Check, 1-3  
Download Site, 2-20

## E

Edit, 2-9  
Editing Device Settings, 2-8  
End-User Mode, 1-7, 2-4

## F

Features, 2-3

## H

Help button, 1-4  
Help Desk, 2-20

## I

Information, 2-3  
Information Display, 2-2  
IP (Internet Protocol) address, 1-2  
IP address, 1-3, 1-6, 1-7

## J

Job Manager button, 1-3

## L

Link 1, 2-20  
Link 2, 2-20  
Location, 1-7  
Logon Mode, 1-7

## M

Manual, 2-20  
Move Up button, 1-4

## N

Network, 1-2, 2-3  
Network Settings, 1-6

## O

Online help, 1-4  
OS, 1-5  
Overview, 1-2  
Owner Privileges, 2-4

## P

Permit End-user's Job Operation, 2-4  
Print Job, 2-5  
Print Log, 2-6  
Protocol, 3-2  
Proxy server, 1-6, 3-2

## R

Refresh, 1-4  
Remote UI, 1-3, 3-3  
Remote UI (User Interface) software, 1-2  
Remote UI screen, 1-3, 1-7

## S

Spool, 3-3  
Starting the Remote UI, 1-7  
Status, 2-2  
Support Link button, 1-4  
Support Links, 2-20  
System Requirements, 1-5

## T

To Top Page button, 1-3  
Top Page, 1-3

## U

Update button, 1-4  
URL, 1-7, 2-20, 3-3  
Utility button, 2-2

## V

Viewing Additional Information, 2-20  
Viewing Device Settings, 2-8  
Viewing the Job Log, 2-4  
    Activity Log, 2-7  
    Print Log, 2-6  
Viewing the Print Log, 2-6

## W

Web Browser, 1-2, 1-3, 1-5, 1-6, 1-7  
Web Server, 1-5  
Web Server Software, 1-2  
Windows, 1-5





**CANON INC.**

30-2, Shimomaruko 3-chome, Ohta-ku, Tokyo 146-8501, Japan

**CANON U.S.A., INC.**

One Canon Plaza, Lake Success, NY 11042, U.S.A.

**CANON CANADA INC.**

6390 Dixie Road Mississauga, Ontario L5T 1P7, Canada

**CANON EUROPA N.V.**

Bovenkerkerweg 59-61 P.O. Box 2262, 1180 EG Amstelveen, The Netherlands

**CANON FRANCE S.A.**

17, quai du President Paul Doumer 92414 Courbevoie Cedex, France

**CANON (U.K.) LTD.**

Woodhatch, Reigate, Surrey, RH2 8BF, United Kingdom

**CANON DEUTSCHLAND GmbH**

Europark Fichtenhain A10, 47807 Krefeld, Germany

**CANON ITALIA S.p.A.**

Palazzo L Strada 6 20089 Milanofiori Rozzano (MI) Italy

**CANON LATIN AMERICA, INC.**

703 Waterford Way, Suite 400, Miami, Florida 33126, U.S.A.

**CANON AUSTRALIA PTY. LTD**

1 Thomas Holt Drive, North Ryde, Sydney, N.S.W. 2113, Australia

**CANON SINGAPORE PTE. LTD.**

79 Anson Road #09-01/06, Singapore 079906

**CANON HONGKONG CO., LTD**

9/F, The Hong Kong Club Building, 3A Chater Road, Central, Hong Kong