

imageCLASS 2300 Set-Up Sheet

for Networking and Printing

READ the imageCLASS 2300 Set-Up Sheet for the Machine FIRST, then read this sheet for Networking and Printing set-up.

Thank you for purchasing the Canon imageCLASS 2300 Network Model.

To get your machine ready for network and printer functions, please follow the instructions in this sheet before referring to any other documentation.

1

What is included in the 2 CD-ROMs

imageCLASS 2300 Driver Software CD-ROM

CONTENTS:

- **CD-ROM Menu**

This menu shows the available driver installations for your new machine.

- **Printer Driver**

The printer driver enables you to use the machine as a printer. For details, see the *PCL Driver Guide*.

- **Fax Driver**

The fax driver enables you to fax a document from your computer. For details, see the *Fax Driver Guide with Cover Sheet Editor*.

- **Fonts**

(Font Manager 2000 (including 96 screen fonts), Barcode Fonts (32 typefaces))

- **Documentation (PDF)**

(PCL Printer Guide, PCL Driver Guide, Fax Driver Guide with Cover Sheet Editor, Adobe Acrobat Reader)

imageCLASS 2300 Network User Software CD-ROM

CONTENTS:

- **Utility Software**

NetSpot Device Installer (NSDI)

This program is for setting up the machine for network operations. For details, see the Readme file and Online Help for this program.

NetSpot Console

This program is for setting network protocol settings and manage the devices connected to the network. For details, see the *NetSpot Console User's Guide* or online manual for this program.

LPR Port Utility

This program is for printing from Windows 95/98/Me in a TCP/IP network. For details, see the *Network Guide*.

NetBIOS/NetBEUI Port Monitor

This is for printing from Windows 95/98/Me in a NetBIOS/NetBEUI network. For details, see the *Network Guide*.

Device Status Extension

For monitoring shared printers and managing print jobs through a web browser. For more information, see the *PCL Driver Guide*.

NDPS Gateway

For printing in a Novell NetWare (Novell Distributed Print Services) network. For details, see the *Network Guide*.

- **Documentation (PDF)**

(Network Guide, Remote UI Guide, Adobe Acrobat Reader)

Installation Choices

- If you intend to use the machine as a local printer, proceed to **2**-A for parallel connection, or **2**-B for USB connection.
- If you intend to use the machine as a network printer, proceed to **3**.
- If you want to install the fax driver for PC faxing, proceed to **4** after completing **2** or **3**.

2

To Use the Machine as a Local Printer

In Windows 95/98/Me/NT4.0/2000/XP environments, you can use both PCL5e and PCL6 printer drivers. The PCL5e driver is recommended for printing text data, whereas the PCL6 driver is recommended for printing image data.

A. Using Parallel Connection



IMPORTANT

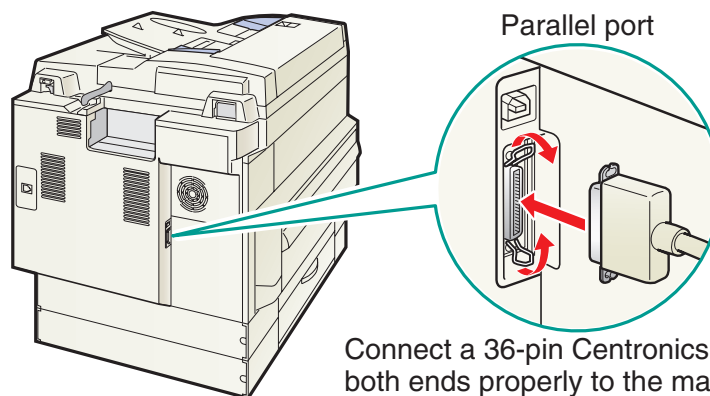
- Turn off both the computer and the machine before connecting the parallel cable.



NOTE

- The following instructions and screens are for Windows 98 Second Edition (SE), although the installation process is essentially the same for other versions of Windows OS as well. For details, see the *PCL Driver Guide*.
- For Windows NT4.0/2000/XP, log in as Administrator to install the driver.

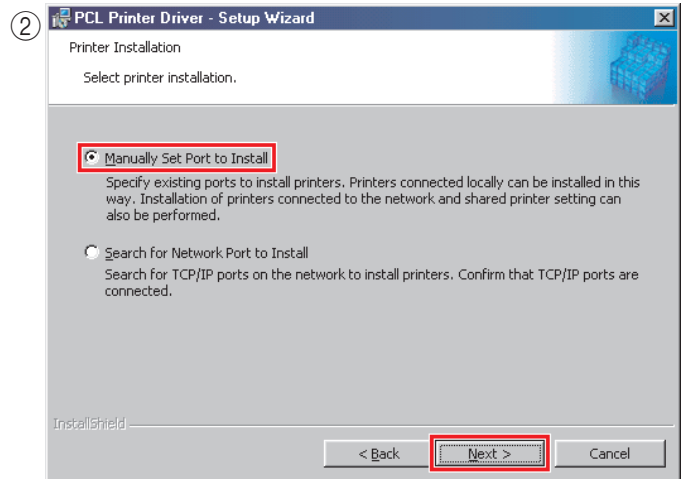
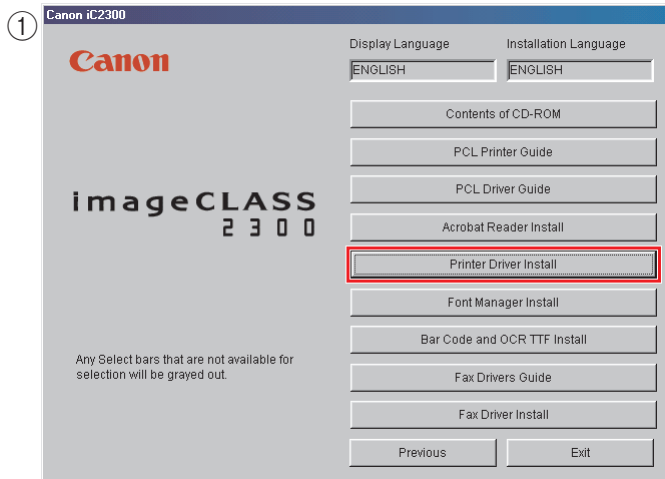
- 1 Connect a parallel cable to the parallel port on the back of the machine. Connect the other end of the cable to the parallel port on your computer.



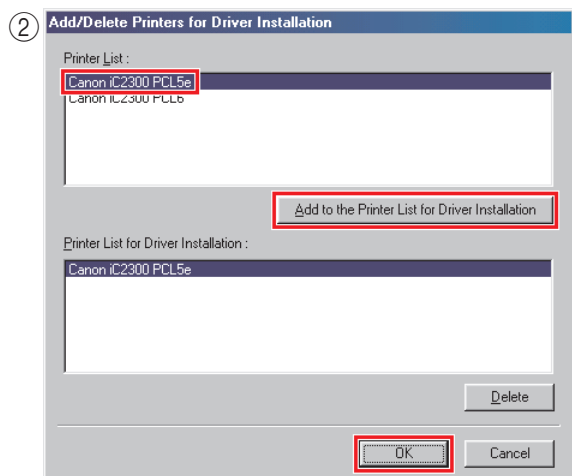
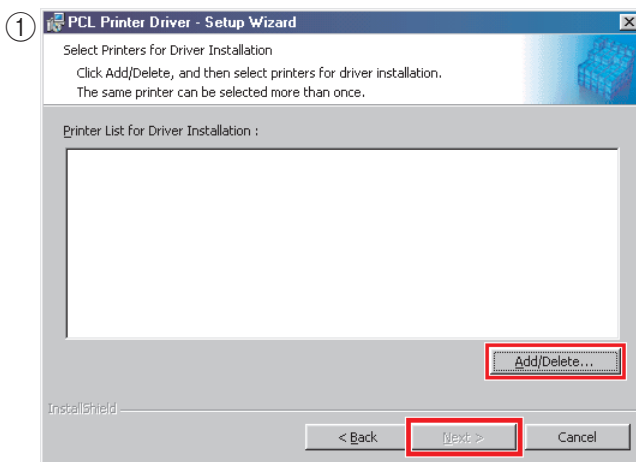
Connect a 36-pin Centronics cable. Secure both ends properly to the machine and computer.

- 2 Turn on the machine and the computer.
- 3 Insert the imageCLASS 2300 Driver Software CD-ROM into the CD-ROM drive.
- 4 Double-click the [My Computer] icon on the desktop. Double-click [CD-ROM] → [iC2300.exe] to start the CD-ROM Menu. Click [Next], and on the following screen that appears, click [ENGLISH].

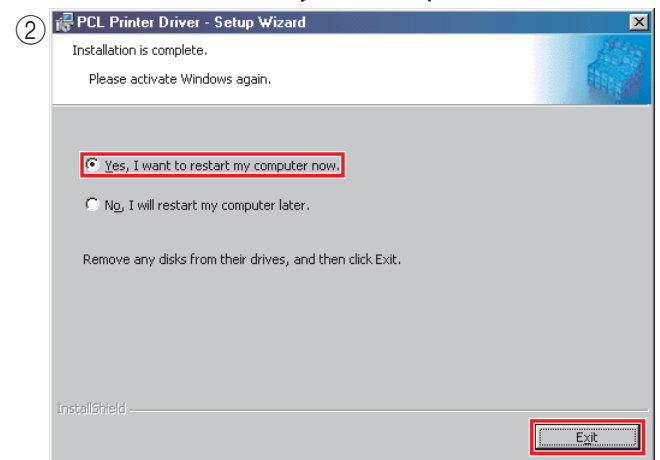
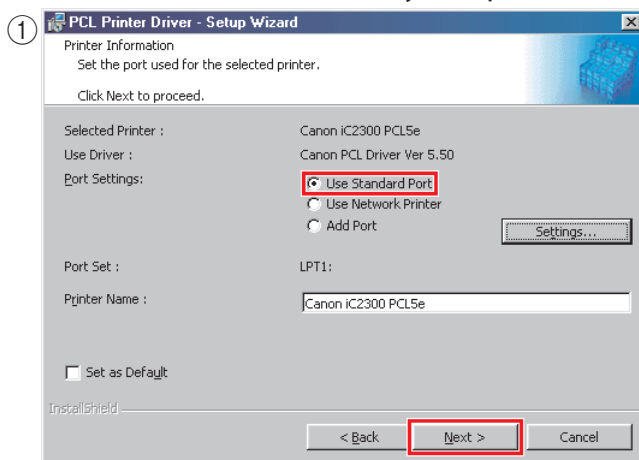
- 5 ① Click [Printer Driver Install] and follow the instructions on the screen. ② On the printer installation screen, select [Manually Set Port to Install] and click [Next].



- 6 Follow the instructions until the screen ① appears. Click [Add/Delete], and ② select the printer driver you want to install. Click [Add to the Printer List for Driver Installation] to add the driver on the list. Click [OK], and then ① [Next] to proceed.



- 7 ① Select [Use Standard Port] and click [Next]. Follow the instructions until the screen ② appears. ② When the printer driver is installed, remove the Driver Software CD-ROM from the CD-ROM drive. Select [Yes, I want to restart my computer now.] and click [Exit] to restart your computer.



- 8 If you want to install the fax driver, proceed to 4.

B. Using USB Connection



IMPORTANT

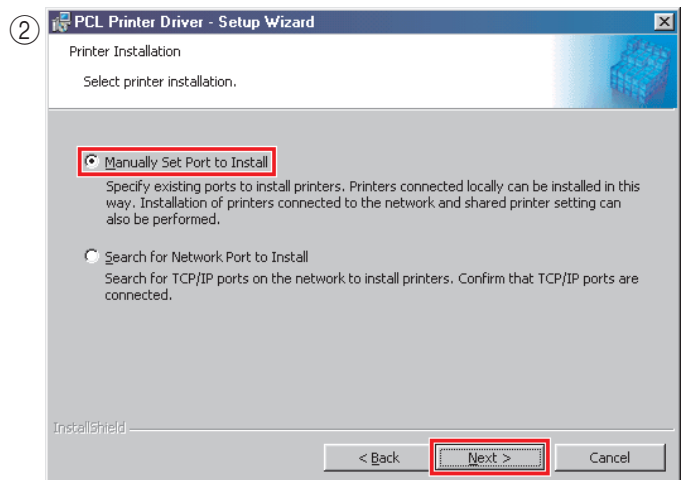
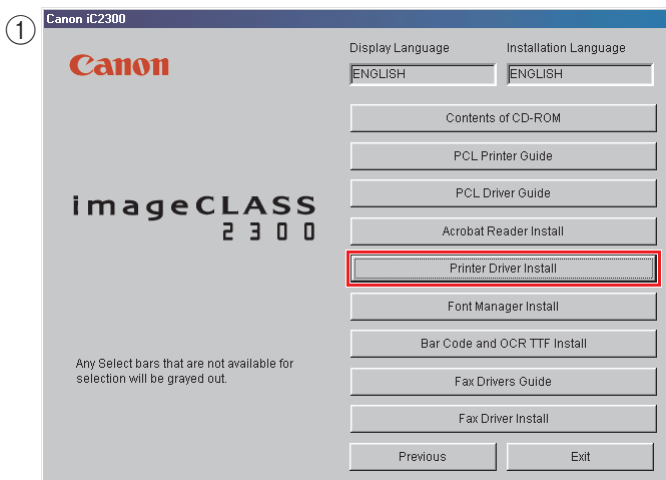
- Do not connect the USB cable before installing the driver software.



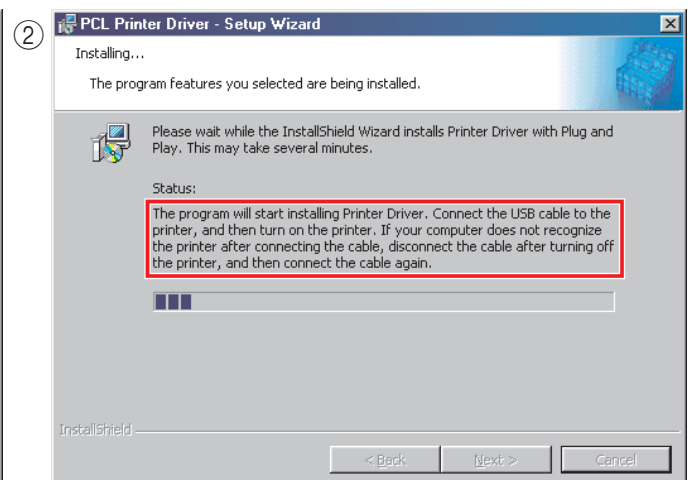
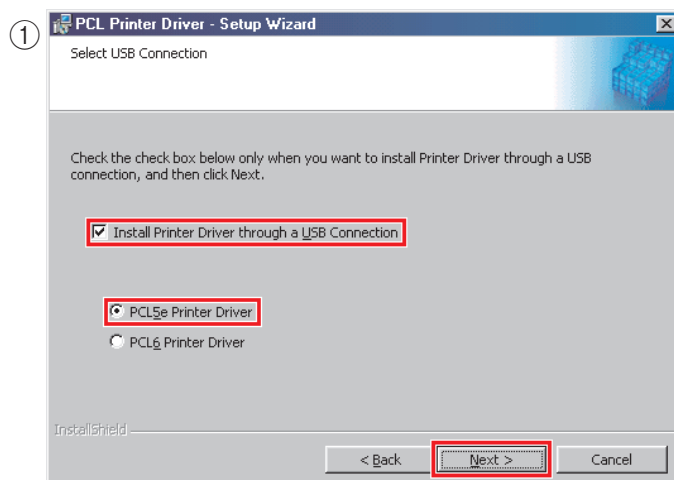
NOTE

- The following instructions and screens are for Windows 98 Second Edition (SE), although the installation process is essentially the same for other versions of Windows OS as well. For details, see the *PCL Driver Guide*.
- For Windows 2000/XP, log in as Administrator to install the driver.

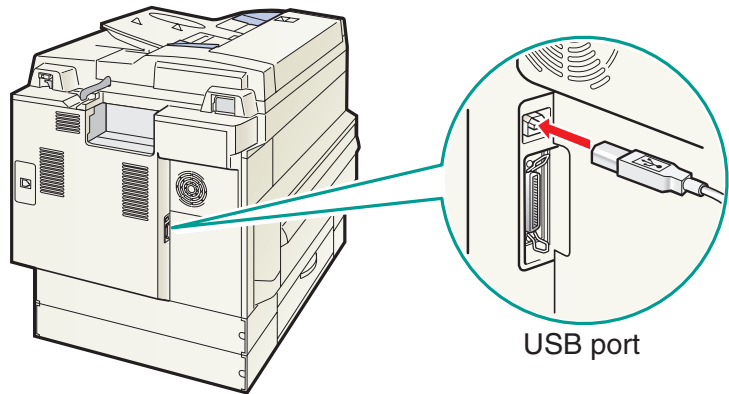
- 1 Insert the imageCLASS 2300 Driver Software CD-ROM into the CD-ROM drive.
- 2 Double-click the [My Computer] icon on the desktop. Double-click [CD-ROM] → [iC2300.exe] to start the CD-ROM Menu. Click [Next], and on the following screen that appears, click [ENGLISH].
- 3 ① Click [Printer Driver Install] and follow the instructions on the screen. ② On the printer installation screen, select [Manually Set Port to Install] and click [Next].



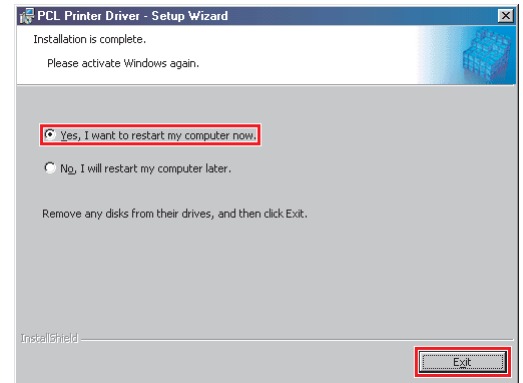
- 4 ① Check [Install Printer Driver through a USB Connection], and select the printer driver you want to install. Click [Next] and follow the instructions on the screen until ② the installer prompts you to connect a USB cable to the machine.



- 5 Connect the USB cable to the USB port on the back of the machine. Connect the other end of the cable to the USB port on your computer, and turn ON the machine's main power.



- 6 When the printer driver is installed, remove the Driver Software CD-ROM from the CD-ROM drive. Select [Yes, I want to restart my computer now.] and click [Exit] to restart your computer.
- 7 If you want to install the fax driver, proceed to **4**.



3

To Use the Machine as a Network Printer

Specifying the Network Settings



IMPORTANT

- The machine needs to be restarted for the specified settings to become effective. To restart the machine, simply turn the power OFF, wait for at least 10 seconds, and turn the power ON again.



NOTE

- For details on specifying network settings, see Chapter 2, "Using a TCP/IP Network (Windows/UNIX)," in the *Network Guide*, and Chapter 2, "Setting the Network," in the *Sending Guide*.
- For additional network protocol settings, see the *Network Guide*.
- For details on how to input characters, see Chapter 2, "Basic Operations," in the *Reference Guide*.
- For the values of the network settings, consult your network administrator or internet service provider (ISP).

1 Print the printer configuration page:



- a. Press [PRINT] → [OK] to take the machine offline.



- b. Press [F1] until <TEST MENU> appears.



- c. Press [F2] until <PRINT EN CONFIG> appears.



- d. Press [F4] to print out the configuration page.

- e. If the IP address is correct, proceed to **Installing the Printer Driver Software** on the next page.

2 Change/correct the IP address of the machine:



a. Press [COPY] → [ADDITIONAL FUNCTIONS].



b. Press [F3] or [F4] to select <06 SYSTEM SETTINGS> → press [OK].



c. Press [F3] or [F4] to select <03 NETWORK SETTINGS> → press [OK].



d. Press [F3] or [F4] to select <02 IP ADDRESS> → press [OK].



e. Press [Clear] to clear the existing IP address.



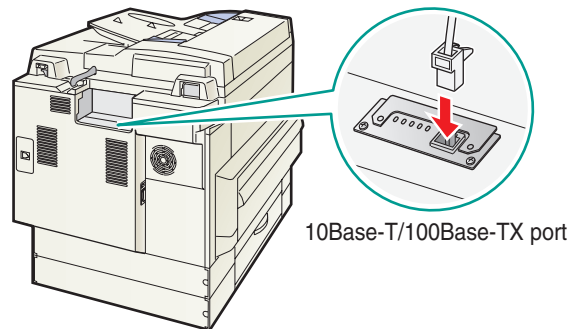
f. Enter a new IP address using the numeric keys → press [OK].



g. Restart the machine to update the network settings.

h. Print the EN CONFIG page to verify the IP address of the machine.

3 Connect a Category 5 rated (Cat 5) twisted-pair LAN cable to the 10Base-T/100Base-TX port on the back of the machine. Connect the other end of the cable to a network router or a hub.

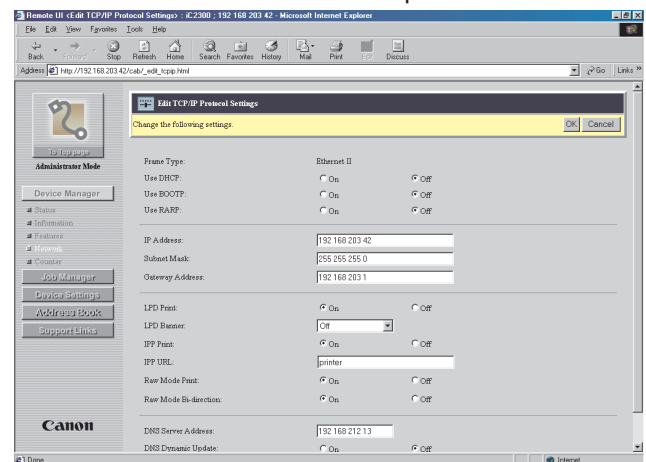


4 Verify the network settings of the machine using the Remote UI:

*Machine is supplied with preinstalled web server software.

- Start a web browser on a computer connected to the network.
- Type the IP address of the machine on the address bar → press the Enter key on the keyboard.
- The Remote UI screen should appear, confirming that the network settings are set correctly.
- Select [Administrator Mode] → click [OK].
- The Device Status page appears.
- Click [Network] to view or change the network settings.

<Remote UI: Example>



Installing the Printer Driver Software

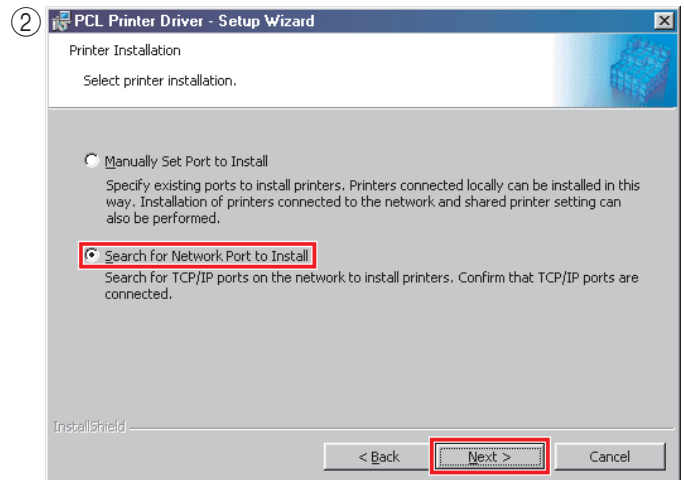
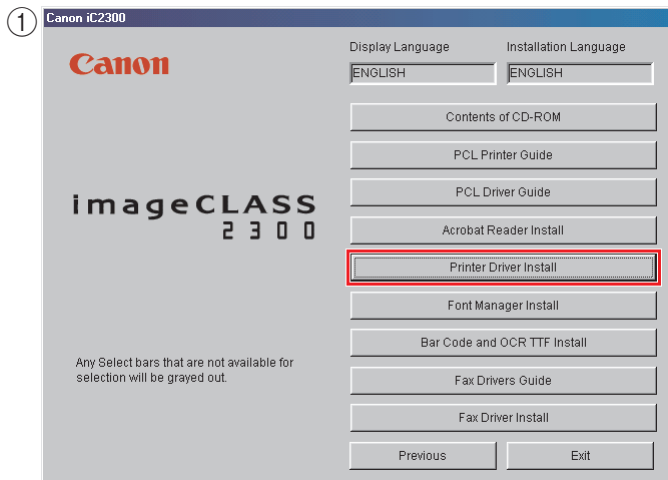
NOTE

- The following instructions and screens are for Windows 98 Second Edition (SE), although the installation process is essentially the same for other versions of Windows OS as well. For details, see the *PCL Driver Guide*.
- For Windows NT4.0/2000/XP, log in as Administrator to install the driver.

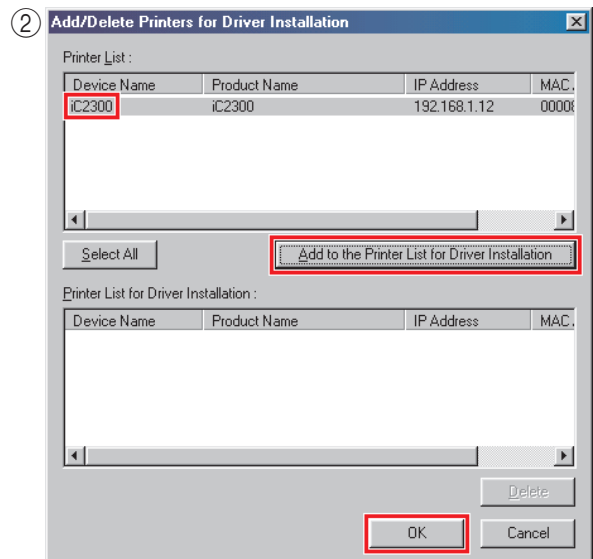
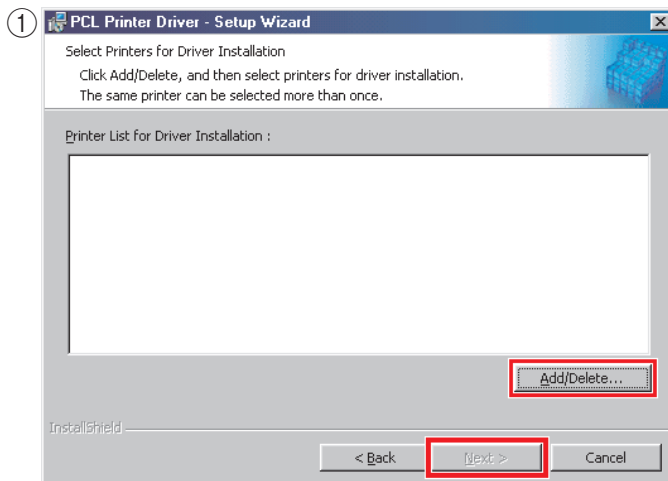
1 Insert the imageCLASS 2300 Driver Software CD-ROM into the CD-ROM drive.

2 Double-click the [My Computer] icon on the desktop. Double-click [CD-ROM] → [iC2300.exe] to start the CD-ROM Menu. Click [Next], and on the following screen that appears, click [ENGLISH].

- 3 ① Click [Printer Driver Install] and follow the instructions on the screen. ② On the printer installation screen, select [Search for Network Port to Install] and click [Next].

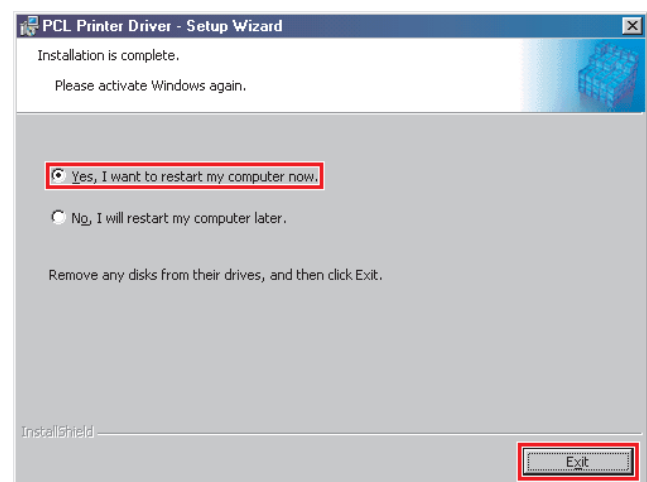


- 4 Follow the instructions until the screen below appears. ① Click [Add/Delete], and ② select the network printer you want to install the driver for. Click [Add to the Printer List for Driver Installation] → [OK]. Follow the instructions on the screen.



- 5 When the printer driver is installed, remove the Driver Software CD-ROM from the CD-ROM drive. Select [Yes, I want to restart my computer now.] and click [Exit] to restart your computer.

- 6 If you want to install the fax driver, proceed to 4.



4

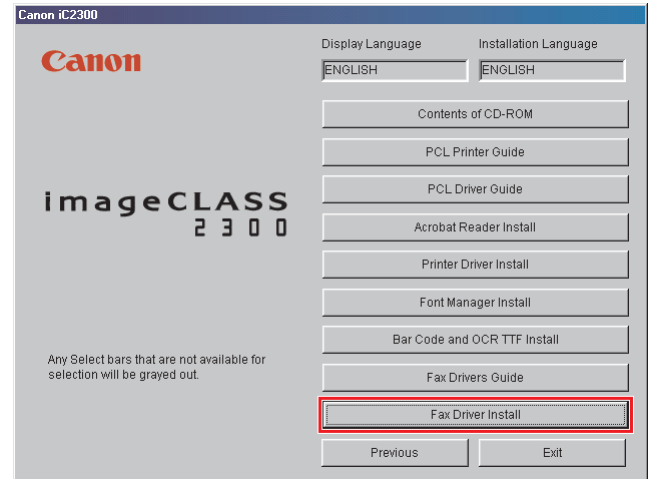
To Install the Fax Driver Software



NOTE

- The following instructions and screens are for Windows 98 Second Edition (SE), although the installation process is essentially the same for other versions of Windows OS as well. For details, see the *Fax Driver Guide with Cover Sheet Editor*.
- For Windows NT4.0/2000/XP, log in as Administrator to install the driver.

- 1 Insert the imageCLASS 2300 Driver Software CD-ROM into the CD-ROM drive.
- 2 Double-click the [My Computer] icon on the desktop. Double-click [CD-ROM] → [iC2300.exe] icons to start the CD-ROM Menu. Click [Next], and on the following screen that appears, click [ENGLISH].
- 3 Click [Fax Driver Install] and follow the instructions on the screen.



The rest of the installation process is very similar to that of the printer driver software. See **2** or **3** to complete the installation, depending on the type of interface your machine is connected to.

5

Using Internet Fax (I-Fax)

You must have a network connection in order to use the Internet Fax function of the machine (see **3**). For complete details on using Internet Fax, see the *Sending Guide*.

6

Congratulations! You have now completed setting up your machine for networking and printing.

Where to go from here...

Once you have completed the necessary steps in this sheet, see the *Basic Guide* for basic operations of all functions of your machine.

If after reading the *Basic Guide* you require more detailed information, see the corresponding sections in the other manuals provided.



NOTE

- Remember to register your machine to ensure product support. The serial number is located on the back of the machine.

Part no. FA7-4860-010

©2003 Canon Inc.

Canon and imageCLASS are trademarks of Canon Inc.

All other products and brand names are registered trademarks or trademarks of their respective owners.

Specifications subject to change without notice.

PRINTED IN U.S.A.