



# D I G I T A L C A M E R A Software Starter Guide

For Use with the Canon Digital Camera Solution Disk Version 3

To Download Images to a Computer

for  
Windows

for  
Macintosh

Install the Software

p. 7

p. 69

Connect the Camera to a Computer

p. ii

p. ii

Start the Software and Download Images

p. 15

p. 71

Start ZoomBrowser EX (Windows) or ImageBrowser (Macintosh computers)  
and load images onto the computer.



- This guide explains the installation method and features of the software for loading and processing images on a computer that have been shot with a Canon digital camera. For detailed instructions on how to use the softwares, see the help files of each software.
- There are precautions that you should take before installing the USB driver software. Ensure that you read this guide before installing it.
- Read the agreement in this guide before using the software on the supplied CD-ROM. By using the software, you agree to be bound by the terms of the agreement.





## READ CAREFULLY BEFORE USING!

### CANON SOFTWARE LICENSE AGREEMENT

IMPORTANT - READ THIS AGREEMENT BEFORE USING THE SOFTWARE ON THE CD-ROM IN THIS BOX. BY USING THE SOFTWARE, YOU AGREE TO BE BOUND BY THE TERMS OF THIS AGREEMENT.

This is a license agreement (the "Agreement") between you and Canon Inc. ("Canon").

IF YOU DO NOT AGREE TO THE TERMS AND CONDITIONS OF THIS AGREEMENT, DO NOT USE THE SOFTWARE PROGRAM ON THE CD-ROM AND THE USER MANUAL IN THIS BOX (COLLECTIVELY, THE "SOFTWARE") AND RETURN THE SOFTWARE WITHIN 30 DAYS FROM THE DATE OF PURCHASE TO YOUR POINT OF PURCHASE FOR A REFUND.

In consideration of the right to use the SOFTWARE, you agree to abide by the terms and conditions of this Agreement.

1. **LICENSE:** Canon grants you the non-exclusive right to use the SOFTWARE only on a single computer. You may physically transfer the SOFTWARE from one computer to another provided that the SOFTWARE is used on only one computer at a time. You shall not install or use the SOFTWARE on a network, multiple CPU, multiple site arrangement, or any other hardware configuration where the SOFTWARE is accessible to more than one CPU or to more than one user.

YOU SHALL NOT ASSIGN, SUBLICENSE, RENT, LEASE, LOAN, CONVEY OR OTHERWISE USE, TRANSFER, COPY, TRANSLATE, CONVERT TO ANOTHER PROGRAMMING LANGUAGE, ALTER, MODIFY, DECOMPILE OR DISASSEMBLE THE SOFTWARE, IN WHOLE OR IN PART, EXCEPT AS EXPRESSLY PROVIDED IN THIS AGREEMENT.

2. **BACK-UP COPY:** You may make one copy of the SOFTWARE solely for back-up purposes, or copy the SOFTWARE onto the permanent storage device (e.g. a hard disk) of your computer and retain the original for back-up purposes. Any other copying of the SOFTWARE is a violation of this Agreement. You must reproduce and include the copyright notice on the back-up copy.
3. **SUPPORT AND UPDATES:** Canon is not responsible for providing maintenance or support for use of the SOFTWARE. No updates, fixes or support will be made available for the SOFTWARE.
4. **LIMITED WARRANTY AND LIMITATION OF LIABILITY:** It is your responsibility to choose, maintain and match the hardware and software components of your computer system. Thus Canon does not guarantee uninterrupted service or correction of errors or that the functions or performance of the SOFTWARE will meet your requirements. THE SOFTWARE IS LICENSED ON AN "AS IS" BASIS AND WITHOUT WARRANTY OF ANY KIND. The CD-ROM storing the SOFTWARE is warranted only against defective material under normal use for a period of ninety (90) days after purchase from an authorized Canon dealer as evidenced by your sales receipt. Your sole remedy for a defective CD-ROM shall be replacement of the same without charge when returned by you at your expense to your point of purchase and proven to be defective upon inspection. The Replacement CD-ROM will be warranted for the remainder of the original ninety (90) day warranty period of the defective CD-ROM. The limited warranty does not apply if the failure of the CD-ROM resulted from accident, abuse or misapplication of the SOFTWARE and shall not extend to anyone other than the original user of the SOFTWARE.

EXCEPT AS SPECIFICALLY SET FORTH IN THIS PARAGRAPH 4, CANON, CANON'S SUBSIDIARIES, DISTRIBUTORS AND DEALERS DISCLAIM ALL WARRANTIES, EXPRESS OR IMPLIED, INCLUDING ANY WARRANTY OF MERCHANTABILITY OR FITNESS FOR A PARTICULAR PURPOSE, WITH RESPECT TO THE SOFTWARE.

### Disclaimer

- While every effort has been made to ensure that the information contained in this guide is accurate and complete, no liability can be accepted for any errors or omissions. Canon Inc. reserves the right to change the specifications of the hardware and software described herein at any time without prior notice.
- No part of this guide may be reproduced, transmitted, transcribed, stored in a retrieval system, or translated into any language in any form, by any means, without the prior written permission of Canon Inc.
- Canon Inc. makes no warranties for damages resulting from corrupted or lost data due to a mistaken operation or malfunction of the camera, the software, the CompactFlash™ cards (CF cards), personal computers, peripheral devices, or use of non-Canon CF cards.

### Trademark Acknowledgments

- Canon, EOS and PowerShot are trademarks of Canon Inc.
- Adobe, Adobe PhotoDeluxe and Photoshop are trademarks of Adobe Systems Incorporated.
- CompactFlash is a trademark of SanDisk Corporation.
- IBM is a registered trademark of International Business Machines Corporation.
- iBook and iMac are trademarks of Apple Computer, Inc.
- Macintosh, PowerBook, Power Macintosh and QuickTime are trademarks of Apple Computer Inc., registered in the United States and other countries.
- Microsoft, Windows and Windows NT are either registered trademarks or trademarks of Microsoft Corporation in the United States and/or other countries.
- Other names and products not mentioned above may be registered trademarks or trademarks of their respective companies.



NEITHER CANON NOR ANY OF CANON'S SUBSIDIARIES, DISTRIBUTORS OR DEALERS IS LIABLE FOR ANY DAMAGES HOWSOEVER CAUSED, INCLUDING WITHOUT LIMITATION, DIRECT, CONSEQUENTIAL OR INCIDENTAL LOSS OR DAMAGE INCLUDING LOSS OF PROFITS, EXPENSE OR INCONVENIENCE HOWSOEVER CAUSED OR ARISING OUT OF THE SOFTWARE OR THE USE THEREOF.

NEITHER CANON, NOR ANY OF CANON'S SUBSIDIARIES, DISTRIBUTORS OR DEALERS SHALL HAVE ANY OBLIGATION TO INDEMNIFY YOU AGAINST ANY CLAIM OR SUIT BROUGHT BY A THIRD PARTY ALLEGING THAT THE SOFTWARE OR THE USE THEREOF INFRINGES ANY INTELLECTUAL PROPERTY OF SUCH THIRD PARTY.

5. **TERM:** This Agreement is effective upon your using the SOFTWARE and remains in effect until expiration of all copyright interests in the SOFTWARE unless earlier terminated. You may terminate this Agreement by destroying the SOFTWARE. This Agreement will also terminate without notice to you if you fail to comply with any of the terms of this Agreement and you must then promptly return the SOFTWARE. In addition, Canon may enforce its other legal rights.
6. **U.S. GOVERNMENT RESTRICTED RIGHTS NOTICE:** The SOFTWARE is provided with restricted rights. Use, duplication or disclosure is subject to restrictions as set forth in either subparagraph (c) (1) (ii) of the Rights in Technical Data and Computer software clause at DFARs 252.227-7013 or subparagraph (c) (1) and (2) of the Commercial Computer Software Restricted Rights Clause at FAR 52.227-19, as applicable.
7. **SEVERABILITY:** In the event that any provision of this Agreement is declared or found to be illegal by any court or tribunal of competent jurisdiction, such provision shall be null and void with respect to the jurisdiction of that court or tribunal and all the remaining provisions of this Agreement shall remain in full force and effect.
8. **CONTROLLING LAW:** The terms of this Agreement as it relates to purchases of the Software in the United States of America shall be governed and construed in all respects in accordance with the laws and regulations of the State of New York, without reference to choice of law principles. The terms of this Agreement as it relates to purchases of the Software in Canada shall be governed by the laws of the province of Ontario.
9. **OWNERSHIP:** All rights, including but not limited to copyrights and trade secret rights, to the SOFTWARE belong to Canon, its affiliated corporations and third party licensors. Your use of the SOFTWARE is subject to the United States, Canada and other applicable copyright and trademark laws and nothing in this Agreement constitutes a waiver of the rights of Canon, its affiliated corporations and third party licensors under such laws. Nothing contained in Paragraph 1 shall be construed to give Canon any ownership rights in any images, graphics or textual material that you save in connection with the Software.
10. **ACKNOWLEDGEMENT:** BY USING THE SOFTWARE, YOU ACKNOWLEDGE THAT YOU HAVE READ THIS AGREEMENT, UNDERSTOOD IT, AND AGREE TO BE BOUND BY ITS TERMS AND CONDITIONS. YOU ALSO AGREE THAT THIS AGREEMENT IS THE COMPLETE AND EXCLUSIVE STATEMENT OF AGREEMENT BETWEEN YOU AND CANON CONCERNING THE SUBJECT MATTER HEREOF AND SUPERSEDES ALL PROPOSALS OR PRIOR AGREEMENTS, VERBAL OR WRITTEN, AND ANY OTHER COMMUNICATIONS BETWEEN THE PARTIES RELATING TO THE SUBJECT MATTER HEREOF. NO AMENDMENT TO THIS AGREEMENT SHALL BE EFFECTIVE UNLESS SIGNED BY A DULY AUTHORIZED OFFICER OF CANON.



# Introduction

Thank you for purchasing a Canon digital camera. This guide explains how to use the software bundled with your camera.

## Where to Find Instructions for Attaching Your Camera to a Computer

Models	Where to Find the Instructions
PowerShot Pro90 IS PowerShot G1	Camera User Guide
EOS D30 PowerShot S10/S20 PowerShot S100 DIGITAL ELPH DIGITAL IXUS	[Connect.pdf] file contained on the Canon Digital Camera Solution Disk*

\* Connection information can be found on the Canon Digital Camera Solution Disk by opening the [Readme] and [English] folders and selecting the [Connect.pdf] file. Adobe Acrobat Reader must be installed to read this file. If you do not have a copy installed, please use the following procedures to install it.

- **Windows**

Open the [Readme], [English] and [Acrobat] folders and double-click the [ar405eng.exe] file to start installing.


- **Macintosh**


Open the [Readme], [English] and [Acrobat] folders and double-click the [Reader Installer] file to start installing.

## Safety Precautions

Please read the safety precautions carefully before using this product. Ensure that you use the product correctly according to the procedures described in this guide.

The following safety precautions are intended to instruct you in the safe and correct operation of the product and its accessories to prevent injuries or damage to yourself, other persons and property. Please read and ensure that you understand them before you proceed to the other sections of this guide.

 **Warnings** This mark indicates topics that could lead to death or serious injury if ignored or handled incorrectly.

 **Warning**

- Do not play the supplied CD-ROM(s) in any CD-ROM Player that does not support data CD-ROMs. The extremely loud sound that may result from playing the CD-ROM(s) in an audio CD player (music player) could damage the speakers. It is also possible to suffer hearing losses from listening with headphones to the loud sounds of a data CD-ROM played on a music CD player.



# Using the Software on the Windows Platform

<b>Introducing the Software .....</b>	<b>2</b>
Camera and Software Compatibility .....	5
<b>System Requirements .....</b>	<b>6</b>
<b>Installing/Uninstalling the Software .....</b>	<b>7</b>
<b>Installing the USB Driver .....</b>	<b>9</b>
<b>Using ZoomBrowser EX the First Time     (From Loading to Printing) .....</b>	<b>15</b>
<b>Using Additional ZoomBrowser EX Functions .....</b>	<b>22</b>
Displaying Images .....	22
Organizing Images .....	26
Erasing Images .....	27
Saving Computer Images to a CF Card in the Camera .....	28
Editing Camera Slide Shows .....	28
Editing the Print Order Settings (DPOF) .....	29
Sending Images via E-mail .....	30
Merging Panoramic Images with PhotoStitch .....	31
Editing and Applying Special Effects to Images .....	32
Printing Images .....	33
Shooting with RemoteCapture .....	36
Converting RAW Images .....	40
Backing Up Data .....	42
<b>Loading Images with TWAIN-Compliant Programs .....</b>	<b>43</b>
Using Adobe Photoshop LE .....	43
Using Adobe PhotoDeluxe Home Edition .....	47
Setting the Parameters (EOS D30 only) .....	51
Converting Raw Images .....	52
<b>Troubleshooting the USB Driver Installation .....</b>	<b>55</b>
<b>Troubleshooting the Computer Connection .....</b>	<b>107</b>
<b>Canon Customer Support .....</b>	<b>108</b>
<b>Adobe Customer Support .....</b>	<b>109</b>



# Introducing the Software

This section introduces the powerful software programs for the Windows platform contained on the CD-ROM included with the camera.

Some camera models do not support some of the software functions. Please check the Camera and Software Compatibility chart to confirm the compatibility of your camera. ( → p. 5)



## Canon Digital Camera Solution Disk

### ZoomBrowser EX

To load camera images, start ZoomBrowser EX.

#### Camera Connection Functions

(Also effective for CF card readers or PC card readers)

- Displays camera images.
- Downloads still images and movies from the camera to the computer.
- Loads and saves RAW images in the RAW format.
- Converts and saves RAW images in other formats.
- Saves computer images to a CF card in the camera.
- Edits slide shows for replay on the camera.
- Edits the print order settings (DPOF-compliant settings) of images on a CF card.
- Connecting to a USB port automatically starts ZoomBrowser EX and displays the camera images.
- Sets the camera parameters.

#### Image File Management Functions

- Displays, moves, copies or deletes images stored on computer disks.
- Allows simple editing procedures, such as image color adjustments and cropping.
- Displays all the files in a specified folder at once and zooms them in and out to facilitate visual searches.
- Displays files in chronological order in a window that looks like a time tunnel.
- replays images from the computer one-by-one at full screen size to simulate a slide show.

#### Image Printing Functions

- Prints multiple images on the same page using the PhotoRecord printing utility.
- Performs auto layouts.
- Allows you to effortlessly place frames or backgrounds around your images for artistic effect.
- Allows you to place titles or captions anywhere on the page.
- Lets you create your own exclusive albums.



## **Supports PhotoStitch Panoramas**

- Allows you to select camera images or images registered with ZoomBrowser EX and start PhotoStitch from within ZoomBrowser EX to merge a series of images into a panorama in a few simple steps.

## **Supports Adobe Photoshop LE or PhotoDeluxe Home Edition**

- Allows you to select images registered with ZoomBrowser EX and start one of these photo-retouching programs from within ZoomBrowser EX to edit and apply special effects to your images.

## **Starts Your E-mail Program**

- Starts your e-mail program and prepares images as e-mail attachments.
- Allows you to adjust image size and compression settings so that large files can be made smaller for transmission.

## **PhotoStitch**

- Effortlessly merges images that are shot over several frames with a camera.
- Automatically arranges images shot in Stitch Assist mode into the correct order and effortlessly merges them.
- Merges any number of images horizontally or vertically, or in a matrix format.
- Makes images with straight lines appear natural not crooked when merged. (Select the wide display format.)
- A 360-degree scene shot in several frames can be merged into a 360-degree image and saved in the QuickTime VR format, making it appear as if you were standing in the middle of the image looking about in all directions.

## **RemoteCapture**

- Connecting via a USB port allows you to release the camera's shutter button from the computer. The images load directly into the computer.
- Connecting via a USB port also allows you to load images directly into the computer by clicking the camera's shutter button.
- Allows interval shooting with custom interval and frame settings.

## **TWAIN Drivers**

### **Canon Digital Camera USB TWAIN Driver**

### **Canon Digital Camera RS-232C TWAIN Driver**

These are the driver utility programs that work within TWAIN-compliant application programs, such as Adobe Photoshop, to load camera images directly into the application program. The USB TWAIN Driver is for connecting via a USB port. The RS-232C TWAIN Driver is for connecting via a serial (COM) port. Install the RS-232C TWAIN Driver if you are going to load images via a CF card reader or PC card reader in Windows 95 / Windows NT 4.0. Start either TWAIN driver from a TWAIN-compliant application program. Neither TWAIN driver can be used as a stand-alone program.

## **Apple QuickTime**

- Installing Apple QuickTime allows you to replay the movies you shot or view images in the QuickTime VR format that you merged with PhotoStitch.





## **Adobe Photoshop LE CD-ROM\***

### **Adobe Photoshop LE**

- Allows you to edit images, apply special effects, print and create sophisticated graphics for the web.



## **Adobe PhotoDeluxe Home Edition CD-ROM\***

### **Adobe PhotoDeluxe Home Edition**

- Allows you to edit images and effortlessly create greeting cards, birthday cards and calendars.

\* The bundled retouching software varies between camera models. Please refer to the System Map for the program supplied with your camera.



# Camera and Software Compatibility

The Canon Digital Camera Solution Disk contains a number of software programs and drivers. Check the chart below for the compatibility of your particular camera model with each program's special functions.

Function                      Software		Model					
		EOS D30	PowerShot Series				DIGITAL IXUS
			Pro90 IS	G1	S10/S20	S100 DIGITAL ELPH	
Computer Interface	USB*	●	●	●	●	●	●
	Serial	–	●	●	●	–	–
Downloading Camera Images	ZoomBrowser EX TWAIN Driver	●	●	●	●	●	●
Downloading Movies	ZoomBrowser EX	–	●	●	–	–	–
RAW Image Conversion	ZoomBrowser EX TWAIN Driver	●	●	●	–	–	–
Uploading Images to Camera	ZoomBrowser EX	●	●	●	●	●	●
Editing Camera Slide Show	ZoomBrowser EX	–	●	●	●	–	–
Editing Camera Print Settings (DPOF)	ZoomBrowser EX	●	●	●	●	●	●
Merging Images Shot in Stitch Assist Mode	ZoomBrowser EX	–	●***	●***	●	●	●
Shooting from the Computer	RemoteCapture**	●	●	●	–	–	–

\* Only compatible with computers with built-in USB ports running pre-installed versions of Windows 98 or Windows 2000.

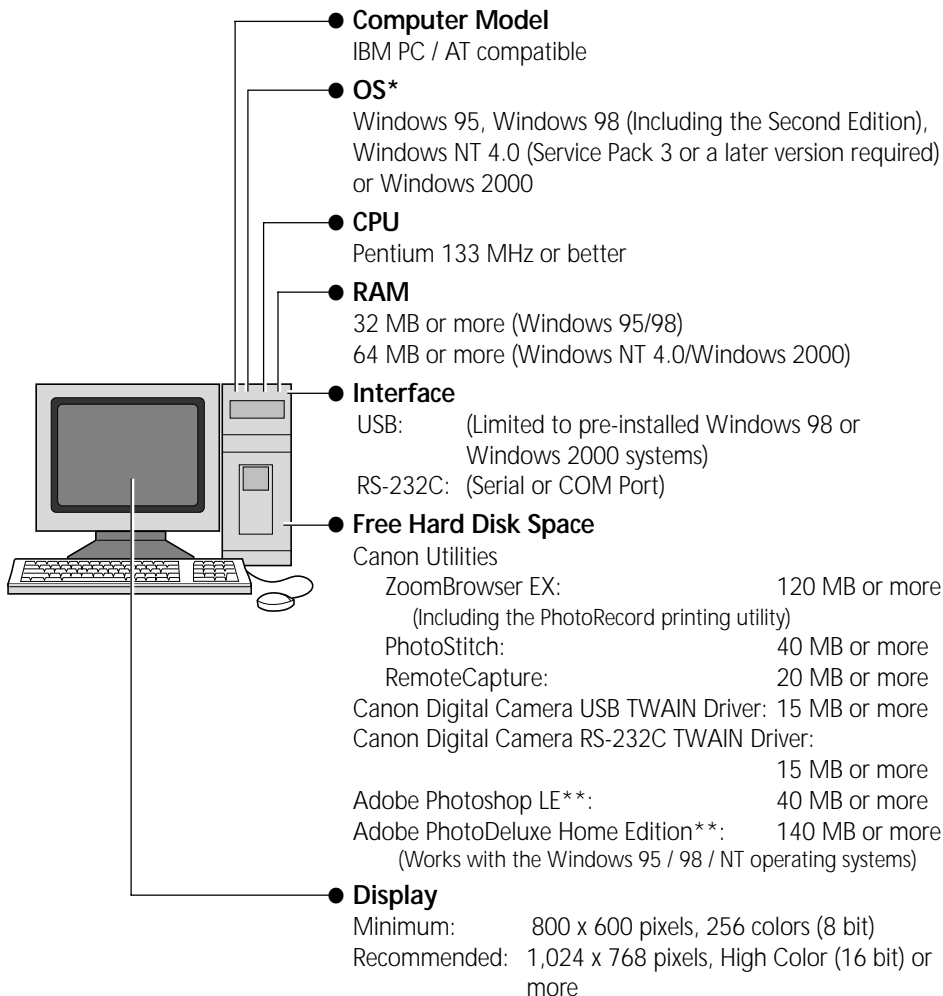
\*\* Only compatible with the USB interface.

\*\*\* Images shot with Wide Converter, Tele-converter or Close-up Lens do not merge well in PhotoStitch.



# System Requirements

The following system requirements must be met to install and operate the software.



\* A cable connection via a USB port is only supported for computers pre-installed with Windows 98 or Windows 2000.

\*\*\* The bundled software varies between camera models. Please refer to the *System Map* for the programs supplied with your camera.

- A CD-ROM drive is required to install the software.
- QuickTime 3.0 or a later version is required to replay movies captured by the camera or to save images merged with PhotoStitch in the QuickTime VR format.
- QuickTime 4.1 is contained on the Canon Digital Camera Solution Disk.
- A sound card is required to replay soundtracks for movie files.

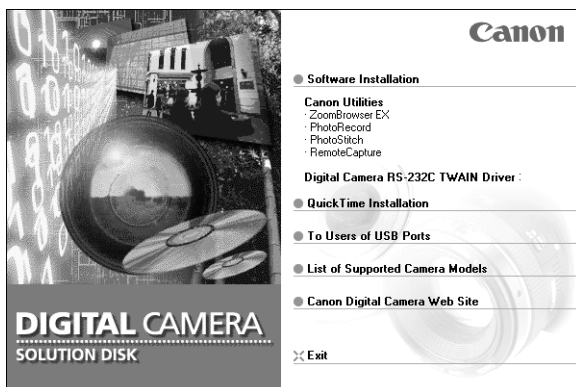


# Installing/Uninstalling the Software

## Installing from the Canon Digital Camera Solution Disk

If you are installing the software onto Windows NT 4.0 or Windows 2000, you must first log on as the administrator and then install the software.

1. Close any programs that are running.
2. Place the Canon Digital Camera Solution Disk in the CD-ROM drive.  
The installer panel will automatically display.



- If the installer panel does not automatically display, use the following procedures to start it.
  1. Double-click the [My Computer] icon on the desktop, and double-click the CD-ROM icon in the next window.
  2. Double-click the [Setup] icon.
- 3. Click [Software Installation].
- 4. Select the install location and click the [Next] button.
- 5. Select the software you wish to install and follow the on-screen instructions to proceed.
- 6. Click the [Exit] button when the installation is complete and the installer panel appears again.



## Installing from the Adobe Photoshop LE CD-ROM

Place the Adobe Photoshop LE CD-ROM in the drive and double-click the [My Computer], [Photosle], [English], and [Photosle] folders, followed by the [Setup.exe] file. Follow the on-screen instructions to continue with the installation.

You must input the software serial number to install Adobe Photoshop LE. It can be found on the CD-ROM case.

## Installing from the Adobe PhotoDeluxe CD-ROM

For installation instructions, place the Adobe PhotoDeluxe CD-ROM in the drive and click [Readme & Guide] and [Install Guide] in the window that displays.

Write down the serial number shown during installation because it is required for the user registration process.

### If You Will Be Connecting via a USB Port

You must install a separate USB driver. Please see page 9 or 12 for instructions.

## Uninstalling the Software

To remove the installed software, click the Windows [Start] menu and select [Settings], [Control Panel] and [Add / Remove Programs]. ZoomBrowser EX can also be uninstalled by clicking the [Start] menu and selecting [Programs], [Canon Utilities], [ZoomBrowser EX], and [ZoomBrowser EX Uninstall]. (PhotoRecord, PhotoStitch and RemoteCapture can be removed with the same procedures.)

To remove Adobe Photoshop LE, click the Windows [Start] menu and select [Programs], [Adobe], [Photoshop Limited Edition] and [Uninstall Photoshop Limited Edition].

To remove Adobe PhotoDeluxe Home Edition, click the Windows [Start] menu and select [Programs], [Adobe], [PhotoDeluxe Home Edition] and [Uninstall PhotoDeluxe Home Edition].



# Installing the USB Driver

## (Preinstalled Windows 98/2000 Systems Only)

### Notes Regarding Installation

- The USB driver only needs to be installed the first time the camera is connected via the USB interface. Installation is not required from the second time onward.
- Do not cancel the installation partway through. Allow the procedure to finish completely before exiting. The camera may not operate correctly if the installation is incomplete.
- Read the "Troubleshooting the USB Driver Installation" section on page 55 if the installation cancels itself during the procedure, if the installation does not proceed as described in these procedures, or if you think that the drivers are not properly installed.
- Read the "Uninstalling the USB Driver" section on page 55 or 58 for instructions for that procedure.

### Installing the USB Driver into Windows 98

#### Windows 98 CD-ROM

- Your computer may prompt you to insert the CD-ROM containing your Windows system software during the installation. Have the Windows disk handy in case it is required.

1. Once you have attached the USB cable to the camera and computer, set the camera to the mode for communicating with a computer.

Refer to *Where to Find Instructions for Attaching Your Camera to a Computer* (→ p. ii) for connection instructions.

The "Add New Hardware Wizard" dialog will appear after a moment.

2. Read the dialog and click the [Next] button.



Your camera model name will appear here.

The dialog will change to the search selection dialog.

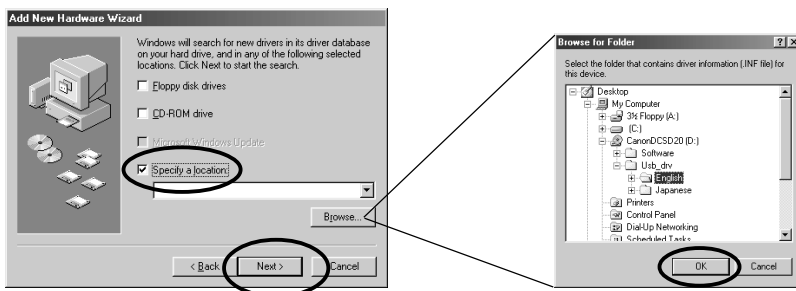


3. Select [Search for the best driver for your device (recommended)] and click the [Next] button.



The dialog will change to the one that allows you to specify the search location.

4. Place the Canon Digital Camera Solution Disk in the CD-ROM drive.
5. Place a check in the [Specify a location] option, click the [Browse] button, and select the [\\USB\_drv\\English] folder. Click the [Next] button.



The dialog will change to the one that states it is searching for the driver files.

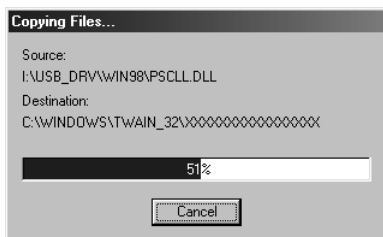
6. Read the dialog and click the [Next] button.



Your camera model name will appear here.



The computer will start to copy the driver files from the CD-ROM.

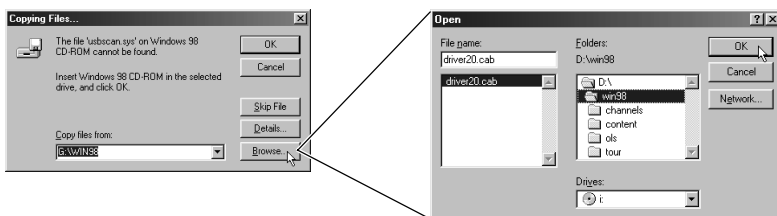


**Do NOT cancel the copy operation while it is in progress.**

When all the required files have been copied, the dialog will state that the installation is complete.

## What to Do if You Are Prompted for the Windows System Disk during the Driver File Copying Process

- If prompted for the Windows system disk, replace the Canon Digital Camera Solution Disk with it and follow the on-screen instructions. If a dialog states that the "usbscan.sys" cannot be found, click the [Browse] button and specify the location as the [WIN98] folder on the Windows system disk.



## 7. Read the dialog and click the [Finish] button.



Your camera model name will appear here.

An event dialog for your camera model will display to allow you to select application programs. (→ p. 15, Step 2, or p. 43, Step 2.)

- If a dialog prompts you to restart your computer, remove the CD-ROM from the drive and restart the computer as instructed.



## Installing the USB Driver into Windows 2000

Begin by logging onto the computer as an Administrator and then install the USB driver.

1. Once you have attached the USB cable to the camera and computer, set the camera to the mode for communicating with a computer.

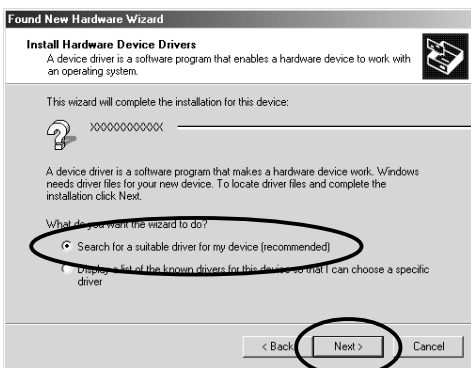
Refer to *Where to Find Instructions for Attaching Your Camera to a Computer* (→ p. ii) for connection instructions.

The “Found New Hardware Wizard” dialog will appear after a moment.

2. Read the dialog and click the [Next] button.



3. Select [Search for a suitable driver for my device (recommended)] and click the [Next] button.



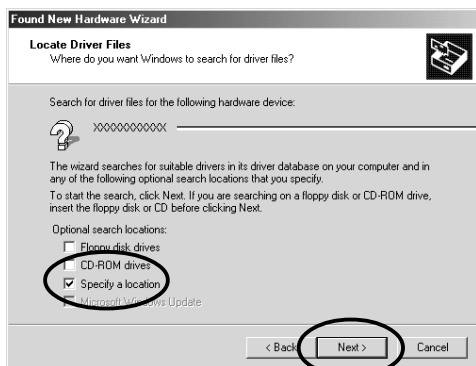
Your camera model name will appear here.

The dialog will change to the one that allows you to specify the search location.

4. Place the Canon Digital Camera Solution Disk in the CD-ROM drive.



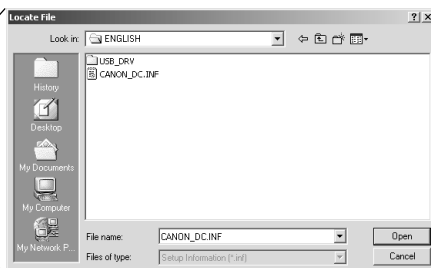
5. Place a check in the [Specify a location] option, click the [Next] button.



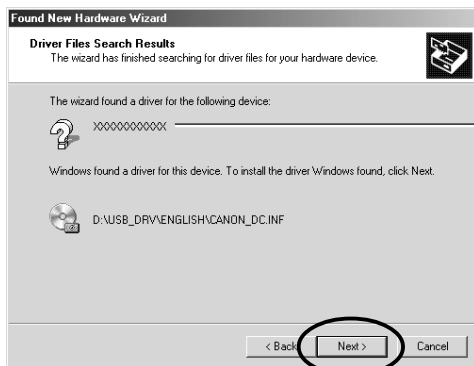
Your camera model name will appear here.

The dialog will change to the one that states it is searching for the driver files.

6. Click the [Browse] button, select the [USB\_drv\English] folder from the Solution Disk and click [OK].



7. Read the dialog and click the [Next] button.



Your camera model name will appear here.

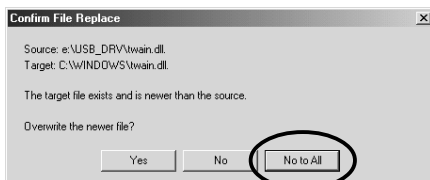


8. Click the [Yes] button if the “Digital Signature Not Found” message displays.



Your camera model name will appear here.

9. Click [No to All] if the “Confirm File Replace” dialog displays.



10. Read the message and click the [Finish] button.



Your camera model name will appear here.

An event dialog for your camera model will display to allow you to select application programs. ( p. 15, Step 2 or p. 43, Step 2.)

- If a dialog prompts you to restart your computer, remove the CD-ROM from the drive and restart the computer as instructed.



# Using ZoomBrowser EX the First Time

## (From Loading to Printing)

This section provides a simple explanation of the procedures for using ZoomBrowser EX to perform each of the steps from loading to printing. Please refer to the ZoomBrowser EX Help file for more details.

Some camera models do not support all of the connection interfaces. Please check the Camera and Software Compatibility chart to confirm your camera's compatibility. (→ p. 5)

### What to Do if the "Caution! Connection Time" Dialog Displays

- If a set period of time passes without a camera function being accessed when the camera is connected via the USB interface, a message on the computer display will ask if you wish to remain connected. If you do not access a function, the camera will close the connection after an additional minute passes. (The power will remain on and no message will appear if the camera is powered by a household power source or its auto power off function is set to Off (excluding PowerShot S10/S20 models)).
- To reopen the connection, press the camera's shutter button or main switch. Please see the Camera User Guide for details.

## Starting ZoomBrowser EX

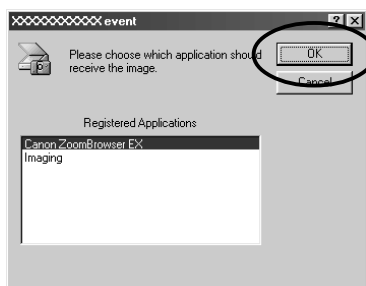
### USB Interface

1. Attach the camera to the computer with the USB cable.

Refer to *Where to Find Instructions for Attaching Your Camera to a Computer* (→ p. ii) for connection instructions.

2. Set the camera to the mode for communicating with a computer.  
After a moment, an event dialog will allow you to select an application program to start.

Your camera model name  
will appear here.





3. Select [Canon ZoomBrowser EX] and click the [OK] button.  
ZoomBrowser EX will start and display the camera's images as small thumbnail images in the ZoomBrowser EX Camera Window. (→ p. 18)  
Quick Tips will automatically display. Read these tips to quickly gain an understanding of the operating procedures.

### How to Have ZoomBrowser EX Start Automatically

- If you want ZoomBrowser EX to start automatically without first displaying the event dialog, use the procedures below to change the settings.
  1. Open the [My Computer] window while the camera is connected to the computer via the USB interface.
  2. Open the [Control Panel] and select [Scanners and Cameras] and your camera model.
  3. Click the [Properties] button and display the [Events] tab.
  4. A list of applications registered for automatic starting will display. Remove the checks beside every program except for ZoomBrowser EX. Click the [OK] button.
- ZoomBrowser EX will now start automatically the next time you connect the camera. If the [Disable device events] option has a check mark, the automatic start will be turned off.

### CF Card Reader or PC Card Slot Interface

1. Place the CF card into the CF card reader or into the PC card adapter and then into the PC card slot.

Refer to *Where to Find Instructions for Attaching Your Camera to a Computer* (→ p. ii) for connection instructions.

2. Start ZoomBrowser EX.

Double-click the [Canon ZoomBrowser EX] icon on the desktop to start the program.



Canon ZoomBrowser EX Icon

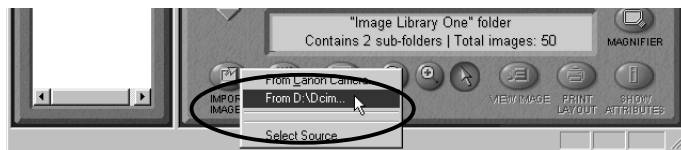
If the [Canon ZoomBrowser EX] icon does not appear on the desktop, click the Windows [Start] button and select [Programs], [Canon Utilities], [ZoomBrowser EX] and [ZoomBrowser EX].

*Quick Tips will automatically display. Read these tips to quickly understand operating procedures.*



- Click the [Import Images] button and select [From D:\Dcim].

The images from the CF card will display in ZoomBrowser EX Camera Window as small thumbnail images. (→ p. 18)



## Serial Interface

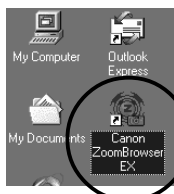
- Attach the camera to the computer with the serial cable.

Refer to *Where to Find Instructions for Attaching Your Camera to a Computer* (→ p. ii) for connection instructions.

- Set the camera to the mode for communicating with a computer.

- Start ZoomBrowser EX.

Double-click the [Canon ZoomBrowser EX] icon on the desktop to start the program.



Canon ZoomBrowser EX Icon

If the [Canon ZoomBrowser EX] icon does not appear on the desktop, click the Windows [Start] button and select [Programs], [Canon Utilities], [ZoomBrowser EX] and [ZoomBrowser EX].

*Quick Tips will automatically display. Read these tips to quickly understand operating procedures.*

- Click the [Import Images] button and select [From Canon Camera].

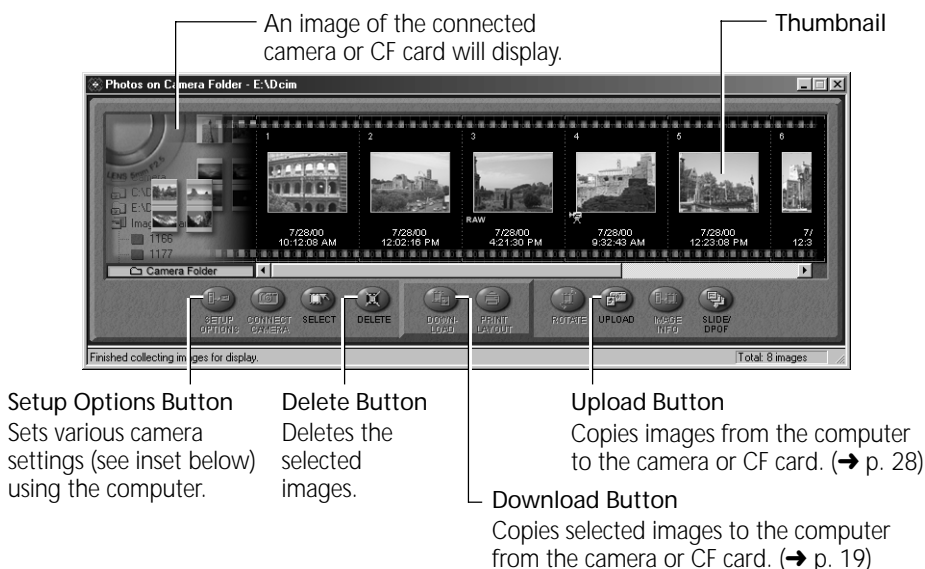
The camera's images will display as small thumbnail images in the ZoomBrowser EX Camera Window. (→ p. 18)





## The ZoomBrowser EX Camera Window

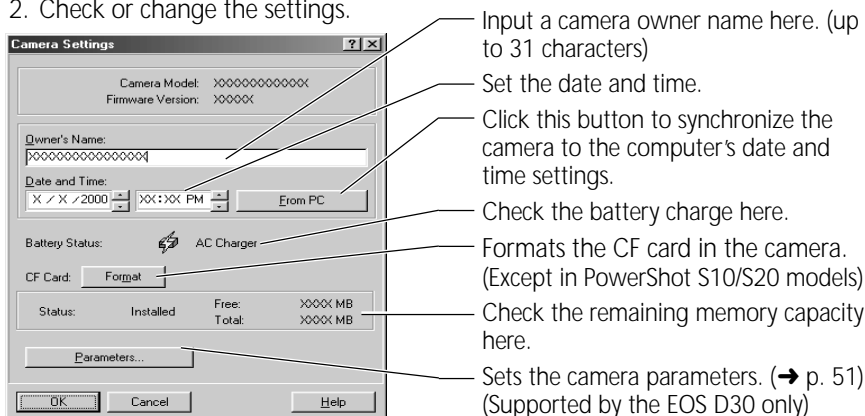
The Camera Window will open when a connection to a camera or CF card is initiated. Thumbnail (small) images will display.



## How to Check and Change Various Camera Settings

- You can adjust the date, time and owner settings in the Camera Settings dialog using the computer when the camera is connected. You can also check the battery charge and remaining memory capacity.

- In ZoomBrowser EX, click the [Setup Options] button to open the Camera Settings dialog. Or in TWAIN Driver, click the [Camera Settings] button to open the Camera Settings dialog.
- Check or change the settings.



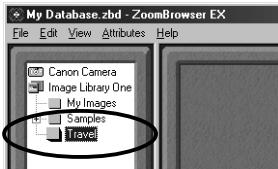


# Loading and Saving Images from the Camera

1. Create a new folder in which to save the images from the camera.  
In the Tree View, right-click the [Image Library One] folder, select [New Folder] from the pop-up menu and input a folder name.

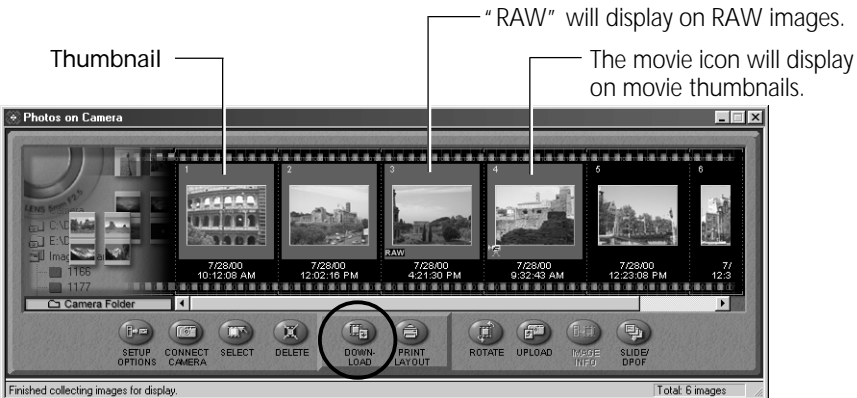


2. Select the new folder in the Tree View.



3. Select the images that you wish to download from the Camera Window and click the [Download] button.

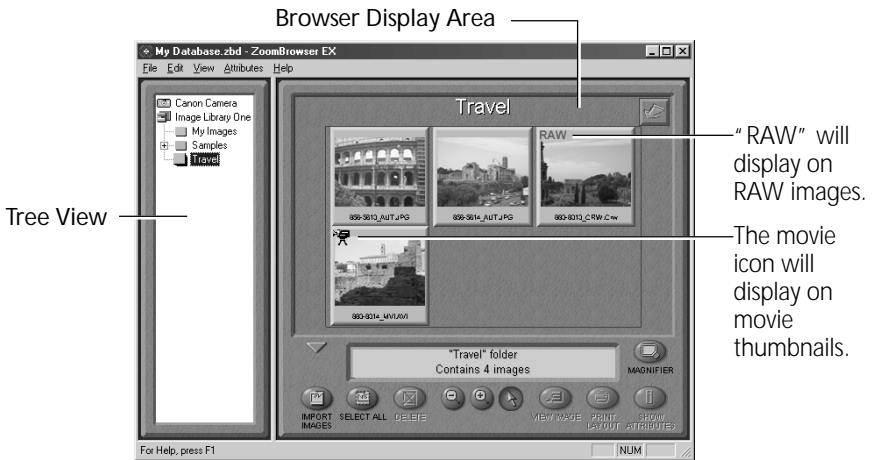
Click the thumbnail you wish to select or press [Ctrl] and click to select multiple thumbnails.




The downloaded images will be saved to the computer disk and appear in the Browser Display Area.



- You can also download images to the computer by dragging them from the Camera Window and dropping them on the Browser Display Area or Tree View.

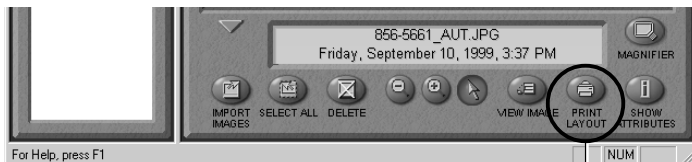


To disconnect the camera, click the close box  at the upper right of the Camera Window. The Camera Window will close.



# Printing Images

1. Select the image(s) you wish to print and click the [Print Layout] button.
  - Movie images cannot be printed.
  - You must convert RAW images before printing them (→ pp. 40-41, 52-54).



Print Layout Button

The PhotoRecord printing utility will start and automatically display the selected image(s) in a page layout.

2. Adjust the print settings if you wish to change the page layout.  
Please refer to page 33 or the PhotoRecord Help file for details of the settings.
3. Click the PhotoRecord [Print] button.



Print Button

The Print dialog will display.

4. Click the [OK] button to start printing.



# Using Additional ZoomBrowser EX Functions

This section explains the additional features of ZoomBrowser EX. Please refer to the ZoomBrowser EX Help file for more details.

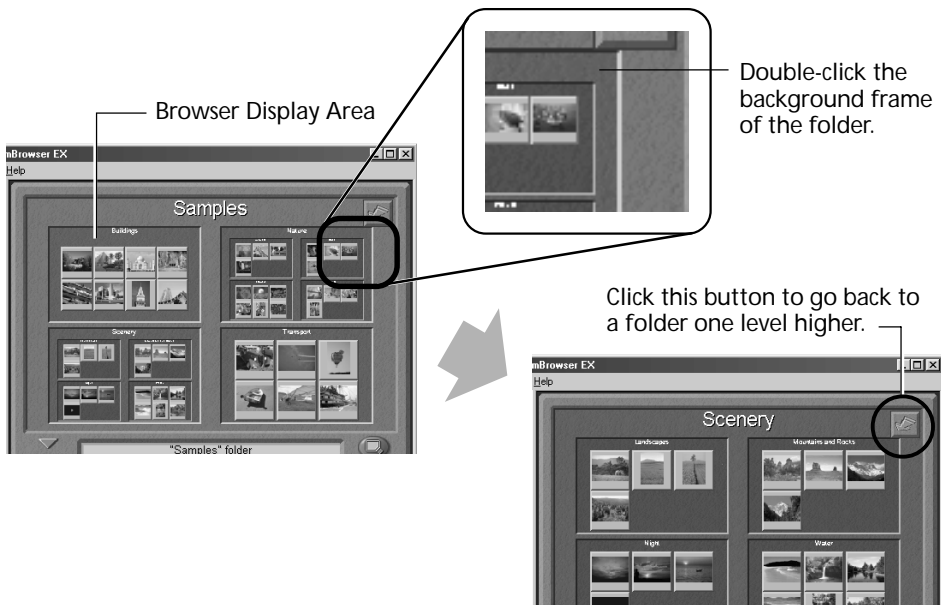
Some of the software functions are not supported by all of the camera models. Please check the Camera and Software Compatibility chart to confirm your camera's compatibility. (→ p. 5)

## Displaying Images

### Zooming Images In and Out

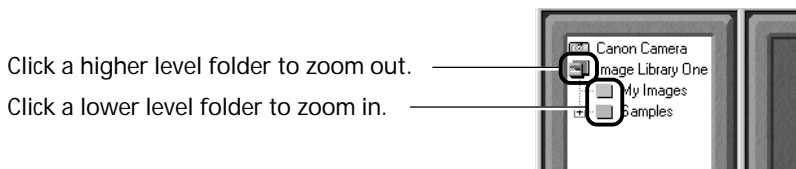
#### (a) Double-Clicking the Browser Display Area

Double-click the background frame of the folder in which an image is registered to zoom it to fill the Browser Display Area.



#### (b) Selecting a Folder in the Tree View

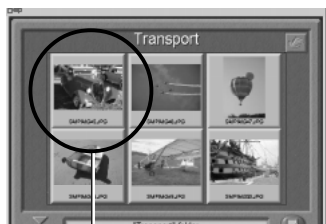
You can also zoom a folder in or out with its icon selected in the Tree View.





## Zooming a Single Image

Double-click an image in the Browser Display Area to display it in the Image Viewer.



Double-click the target image.



Edit Panel Button

## About the Image Viewer Edit Panel

- The edit panel displays when you click Edit Panel button in the Image Viewer.



### Crop Button

Drag the cursor to select the crop area and click the [CROP] button to trim everything outside the crop area.

### Save As Button

Save the image with a different name and file format.

Color / Brightness / Contrast Sliders  
Slide the tab to adjust the color, brightness or contrast settings.

### Undo / Redo Buttons

Reverse an action or reimplement it.



## Replaying Movies

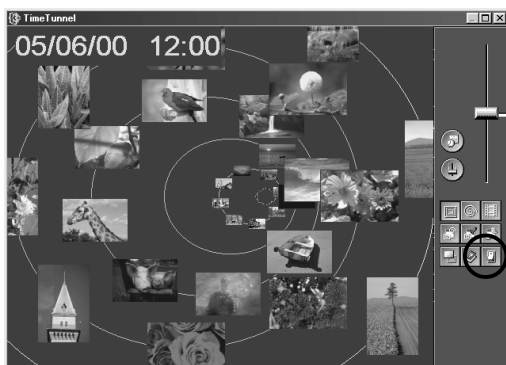
Double-click a thumbnail with the movie icon to start QuickTime Player and replay the movie.



- If QuickTime 3.0 or a later version is not already installed, install it from the Canon Digital Camera Solution Disk.

## Displaying Images in Chronological Order

Select a folder or some images, click the [View] menu and select [TimeTunnel]. The selected image(s) will display in a time tunnel. Please refer to the TimeTunnel Help file for more details on how to operate this function.




Drag the tab up or down to go backward or forward in time. The time tunnel will advance in the selected direction.

To quit TimeTunnel and return to the ZoomBrowser EX window, click this button.



## Showing Images in a Slide Show

The slide show function displays images saved onto the computer disk one-by-one at full-screen size as if they were part of a slide show.

1. Click the [View] menu and select [Slide Show Options].
2. Select a play method.  
The "Slide Show Options" dialog will display.  
Set a play interval and a transition effect and click the [OK] button.
3. Select images from the ZoomBrowser EX Browser Display Area for showing.
4. Click the [View] menu and select [Slide Show].  
The selected images will play in order. The slide show will close after the last image is displayed. If the slide show is set to repeat, press the  (close) button on the control panel to close the slide show.

### About the Print Mark Button

- If the [Print Mark] button is clicked while an image is played in a slide show, PhotoRecord will automatically start after the slide show has finished and place the displayed image with a print mark in an auto layout.
- Please refer to page 33 or the PhotoRecord Help file for more details on how to operate this function.



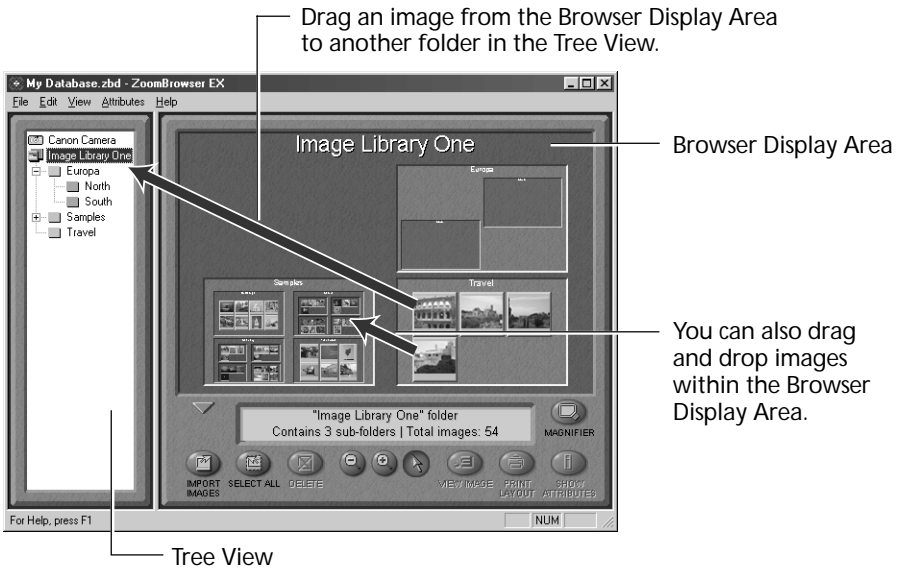
Print Mark Button



## Organizing Images

### Changing the File Location

You can move an image file by dragging and dropping it onto another folder icon.



The [Image Library One] folder is located within the folder in which ZoomBrowser EX was installed. The Tree View displays files at levels below this folder.

### Adding a New Library Folder

Adding a folder to the Tree View allows you to display the images in that folder and its subfolders in ZoomBrowser EX. Click the [File] menu, select [Add Image Library] and select the folder. The selected folder will appear in the ZoomBrowser EX Tree View as a new library.

### Refreshing the Contents of a Library

If you have used another program, such as the Windows Explorer utility or Adobe Photoshop LE, to move or edit images registered with ZoomBrowser EX, you should select the library, click the [View] menu and select [Refresh Current Library]. This will update the library.



# Erasing Images

An image cannot be recovered after it is erased. Double-check to make sure you have the right images before erasing.

## Erasing Images Singly

1. Select the target image in the Browser Display Area and click the [Delete] button.

A confirmation dialog will display.

2. Check the image to make sure it can be deleted and click [Delete].

The image will be erased.

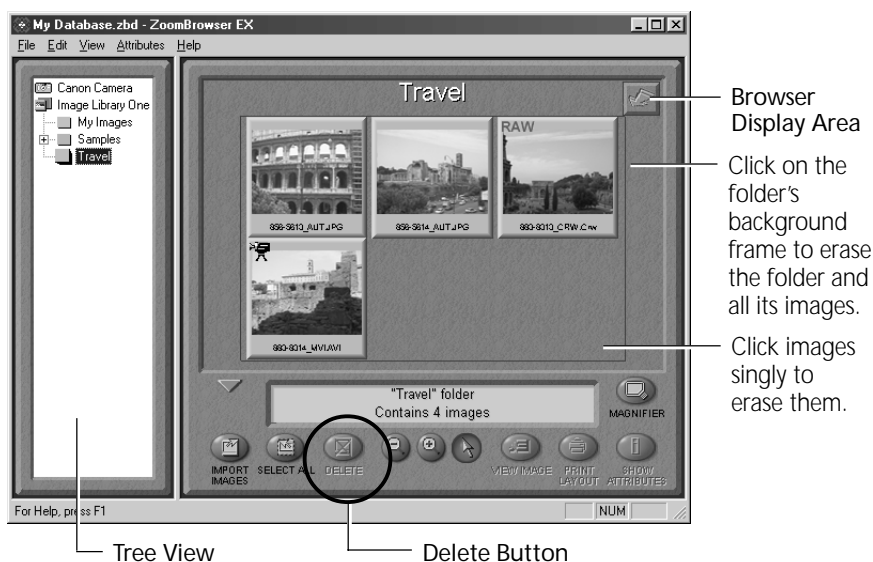
## Erasing Images by Folder

1. Click the background frame of the target folder and the [Delete] button.

A confirmation dialog will display.

2. Check the images to make sure they can be deleted and click [Delete].

The images and the folder will be erased.





## Saving Computer Images to a CF Card in the Camera

1. Open the Camera Window. (→ pp. 15-18)
2. Click the [Upload] button in the Camera Window.  
The "Upload Images from Disk" dialog will display.
3. Select the images from the computer and click the [Open] button.  
The "Save to Camera" dialog will display.
4. Select the image size and resizing options and click the [Save to Camera] button.  
The selected image will be saved onto the camera's CF card.

## Editing Camera Slide Shows

This function allows you to edit slide shows played by the camera. To edit slide shows shown on the computer display, see "Showing Images in a Slide Show." (→ p. 25)

1. Open the Camera Window. (→ pp. 15-18)
2. Click the [Slide/DPOF] button.  
The Edit Slide/DPOF window will display.
3. Click [Slide Show] on the window's upper left.  
The camera images will display on the left side. Images registered in the selected slide show will display on the right side.  
Slide Shows 1 to 3 correspond to the numbers of the slide shows that can be shown with the camera.
4. Drag and drop images from the area on the left to the area on the right to register them in the slide show.  
You can drag images to change their order in the area on the right. This order corresponds to the replay order.
5. Click the [Save to Camera] button.  
The slide show will be saved to the CF card in the camera.
6. Click the [Exit] button.



## Editing the Print Order Settings (DPOF)

You can specify which images on a CF card you wish to print as well as the number of copies. You can also select the print type and whether or not the shooting date and file number information is printed with the image. A convenient feature of these settings is that they comply with the DPOF (Digital Print Order Format) standards, which allow you to print on any DPOF-compliant digital printer or order prints from a participating photo developing laboratory.

1. Open the Camera Window. (→ pp. 15-18)
2. Click the [Slide/DPOF] button.  
The Edit Slide/DPOF window will display.
3. Click [Print Order (DPOF)] at the window's upper left.
4. Select the print type from among the [Standard Print], [Index Print] or [Both] options.
  - Standard .. Set the number of copies of the images you wish to print in the column below the thumbnails.
  - Index ..... A check mark will appear below the thumbnails selected for printing.
5. Click the [Save to Camera] button.  
The print order settings will be saved to the CF card in the camera.
6. Click the [Exit] button.

- A warning message will display if ZoomBrowser EX encounters print settings data it does not support on a CF card with print settings created by a non-Canon brand DPOF-compliant digital camera. If any print settings on such a card are changed, all of them will be overwritten by ZoomBrowser EX and lost.
- Some printers or photo developing laboratories may not be able to reflect all of the print settings in the output.



## Sending Images via E-mail

You can send images as attachments to e-mail messages. You can adjust the image size and compression to reduce the file size for transmission.

1. Select the target image(s) in the Browser Display Area.
2. Click the [File] menu and select [Send Image(s) by E-Mail].

3. Adjust the image size and compression.

The e-mail image creation window will display. Set the image size and quality and follow the on-screen messages to complete the procedures.

4. Click the [Finish] button.

When you click the [Finish] button, your e-mail program will start and open a new message with the image file attached. Input your message, a subject, the recipient's address and send the message.

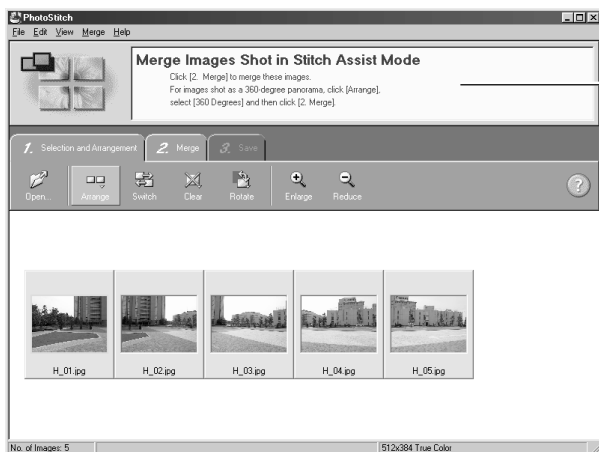
Some e-mail programs or operating systems may not support the auto start function. In that case, temporarily save the adjusted image file to the desktop or another easy-to-find folder. Then start your e-mail program, open a new message and attach the adjusted image file to it.



# Merging Panoramic Images with PhotoStitch

## To Merge Images Registered in ZoomBrowser EX

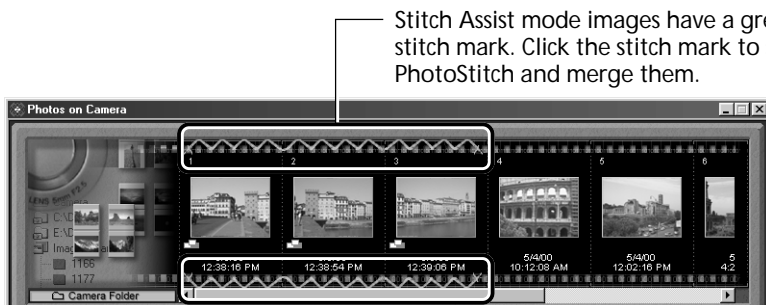
- You can merge a series of overlapping images into a single, seamless panorama.
- Select the images in the browser area, click the [Edit] menu and select [PhotoStitch]. The PhotoStitch program will start.
- Follow the instructions in the guidance window to merge the images.
- Please refer to the PhotoStitch Help file for more details.



Follow the instructions to merge the images.

## Images Shot in Stitch Assist Mode

- PhotoStitch automatically arranges images shot with the Stitch Assist mode of Canon digital cameras in the correct order and orientation, making it easy to merge these images. Stitch Assist mode images display in the Camera Window as shown below.



Please see the *Camera User Guide* for instructions for shooting in Stitch Assist mode.



# Editing and Applying Special Effects to Images

## Adobe Photoshop LE


1. Confirm that Adobe Photoshop LE has been installed.
2. Select an image from the Browser Display Area of ZoomBrowser EX.
3. Click the [Edit] menu and select [Edit Image using Adobe Photoshop].  
Please refer to the Adobe Photoshop LE Help file and electronic guide (User Guide.pdf) for instructions for this program.
4. Edit and apply special effects to the image.
  - ZoomBrowser EX supports the BMP, FlashPix, JPEG and TIFF file formats.
  - If you selected a folder registered in ZoomBrowser EX as the save location, please return to the ZoomBrowser EX window, click the [View] menu and select [Refresh Current Library] to update the thumbnail in ZoomBrowser EX.

## Adobe PhotoDeluxe Home Edition

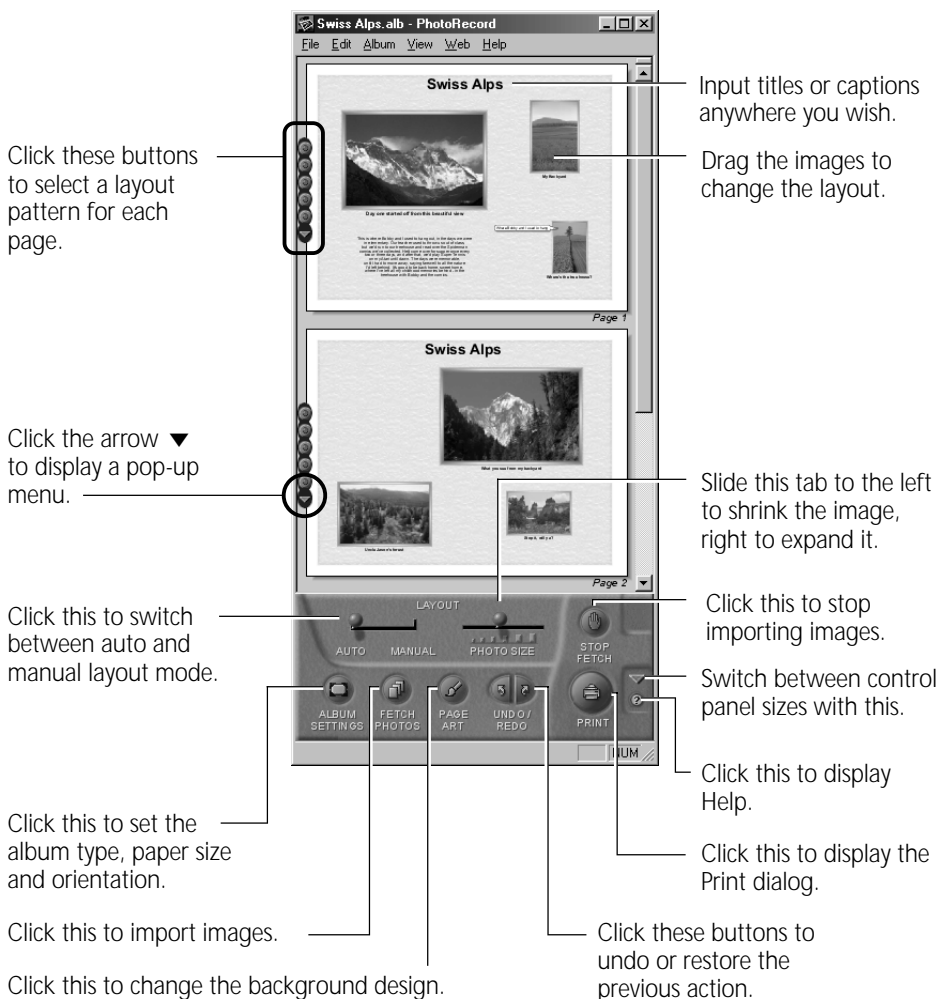
1. Confirm that Adobe PhotoDeluxe Home Edition has been installed.
2. Select an image from the Browser Display Area of ZoomBrowser EX.
3. Click the [Edit] menu and select [Edit Image using Adobe PhotoshopDeluxe Home Edition] or [Edit Image using Adobe PhotoDeluxe Home Edition].  
Please refer to the Adobe PhotoDeluxe Home Edition Help file and electronic guide (Getting Started.pdf) for instructions for this program.
4. Edit and apply special effects to the image.
  - Once you have finished editing the image, click the [File] menu, select [Export] and [File Format], and save the image.
  - ZoomBrowser EX supports the BMP, FlashPix, JPEG and TIFF file formats.
  - If you selected a folder registered in ZoomBrowser EX as the save location, please return to the ZoomBrowser EX window, click the [View] menu and select [Refresh Current Library] to update the thumbnail in ZoomBrowser EX.



## Printing Images

- Select a folder or image(s) for printing from the Browser Display Area or Camera Window and click the [Print Layout] button to start the PhotoRecord program.
- You can also click the  button while an image is displayed in a slide show to add a print mark to it. When the slide show closes, PhotoRecord will start automatically.
- The selected images will automatically display in a page layout.
- Please refer to the PhotoRecord Help file for more details.

## PhotoRecord Window





## Creating a New Album

The PhotoRecord layouts with titles and captions can be saved as albums. Moreover, PhotoRecord includes a variety of templates, making it easy to create beautiful albums.

1. To save an album, click the PhotoRecord [File] menu and select [Save As].
2. Input a name and click [Save].

Add a title to the page

Click the arrow ▼ and select [Edit Title] from the pop-up menu.

Add a caption to an image

Right-click an image and select [Edit Caption] from the pop-up menu.

Change the photo frame

Right-click the image and select [Change Photo Frame] from the pop-up menu.

Change the page background

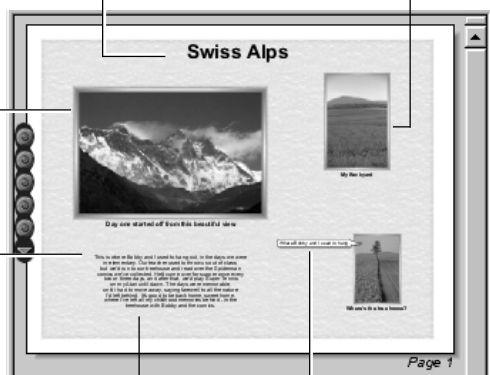
Right-click the page and select [Change Page Style] from the pop-up menu.

Insert text

Click the arrow ▼ and select [Add Text] from the pop-up menu.

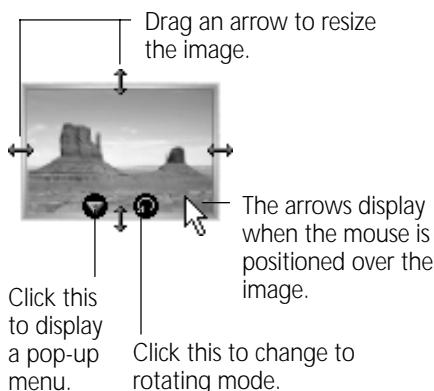
Change the text box format

Right-click a text box and select [Change Frame] from the pop-up menu.

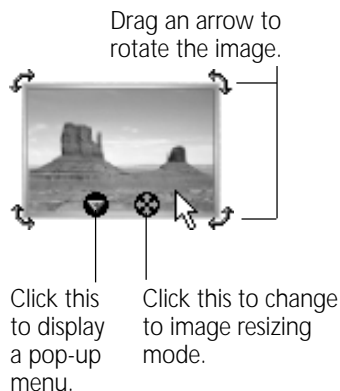


## Image Resizing and Rotating Modes

### Image Resizing Mode



### Image Rotating Mode





## Setting the Image Size for Printing

### Fixed Photo Size

Images can be printed at standard photo print size.

Since the images are printed without gaps between them, they look like photo prints when they are cut with a cutter.

1. Click the [Album Settings] button in the PhotoRecord window.  
The Album Settings dialog will display.
2. In the [Album Types] category, select [Fixed Photo Size Printing].
3. Set the photo size and click [OK].

### Printing on Canon Perforated Paper

The [Canon Perforated paper printing] option will be selectable in the Album Settings dialog if you are using a Canon BJ printer that supports Canon Perforated Paper media. Canon Perforated Paper has perforations at the preset dimensions allowing you to print at the specified size and simply tear along the perforated lines to produce an image with the appearance of a finished photo print. Please consult the BJ Solution Disk User's Guide for more details.

### Precaution when Printing from PhotoRecord from Windows NT 4.0/Windows 2000

- If the printer name is too long, you may not be able to print from PhotoRecord. Shorten the name to enable printing.
  1. Click the Windows [Start] menu and select [Settings] and [Printers].
  2. Click the printer name twice with a slight pause between clicks. Input a new name that is 31 characters or less. If the printer is a network printer, include the path name in the 31-character count.



## Shooting with RemoteCapture

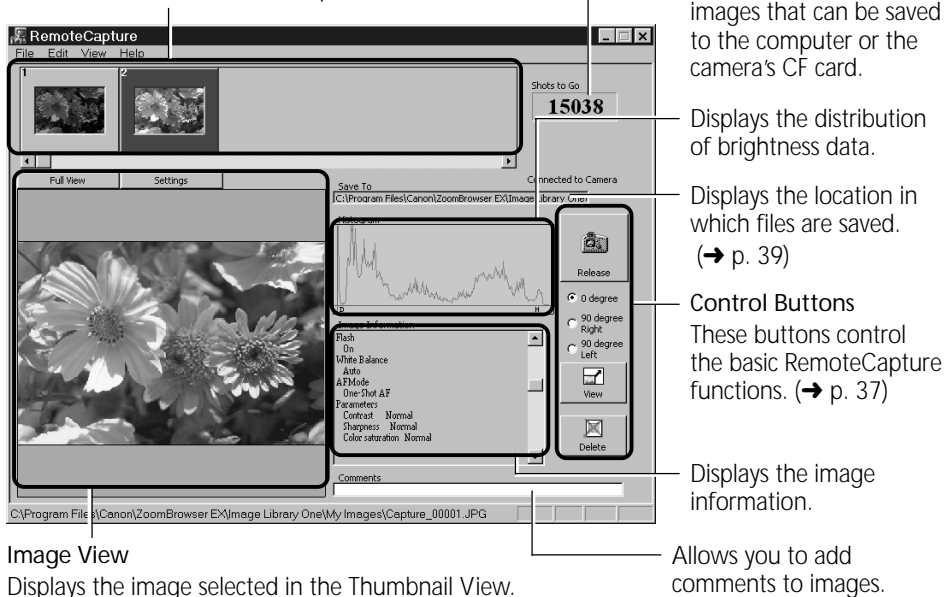
RemoteCapture will start if you click the ZoomBrowser EX [Edit] menu and select [RemoteCapture] when the camera is connected to the computer via a USB port. RemoteCapture lets you activate the camera's shutter button remotely from the computer. The captured image is automatically saved into the currently selected ZoomBrowser EX folder.

- RemoteCapture can only shoot still images.
- If an EOS D30 camera is connected via a USB port, clicking the shutter button on the camera also downloads the image directly to the computer.

### RemoteCapture Window

#### Thumbnail View

Displays thumbnails of all the images shot in the current session since RemoteCapture was started.



#### Image View

Displays the image selected in the Thumbnail View.

### How to Start RemoteCapture Instead of Displaying the Camera Window

The settings can be changed so that ZoomBrowser EX automatically starts RemoteCapture instead of its Camera Window when the camera is connected to the computer's USB port.

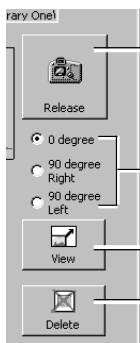
- (1) Click the ZoomBrowser EX [File] menu and select [Preferences].
- (2) In the Preferences dialog, click the [AutoStart] tab and set [Automatic Start Options] to [RemoteCapture].

The RemoteCapture window will now show instead of the ZoomBrowser EX Camera Window when the camera is connected to the USB port and starts ZoomBrowser EX.



## About the RemoteCapture Control Buttons

The control buttons are used to shoot, delete and display images.



Click here to trigger the camera and take a shot. The image is automatically saved to the computer. Pushing the camera's shutter button directly will also save the image to the computer. (Supported by EOS D30 only)

Rotates the image saved to the computer by 90 degrees either way. Select one of these to automatically rotate and save images shot with the camera swiveled from a horizontal to a vertical orientation.

Displays the image selected in the Thumbnail View in the Viewer.

Deletes the image selected in the Thumbnail View. Please take proper caution before deleting because deleted images are completely erased from the computer in one step with this button.

## Using Interval and Timer Shooting

RemoteCapture can be used to shoot a set number of images at specified intervals (Interval Shooting) or to shoot an image after a specified delay (Timer Shooting).

### Interval Shooting

You can set the number of frames and the interval at which they are shot.

1. Click the [File] menu and select [Interval Shooting].  
The Interval Shooting dialog will display.
2. Set the number of frames and interval value and click [OK].  
RemoteCapture will start interval shooting, capturing the specified number of images at the specified intervals.

### Timer Shooting

You can set the time delay before an image is shot.

1. Click the [File] menu and select [Timer Shooting].  
The Timer Shooting dialog will display.
2. Set the number of seconds and click [OK].  
RemoteCapture will start timer shooting, capturing an image after the specified delay.

## Printing a Thumbnail Index Sheet

Thumbnails you select in the Thumbnail View can be printed in order on a single index sheet by clicking the [File] menu and selecting [Print Index]. Since the file name and shooting date and time can be printed with each image, index sheets serve as a convenient record of and reference for your images.



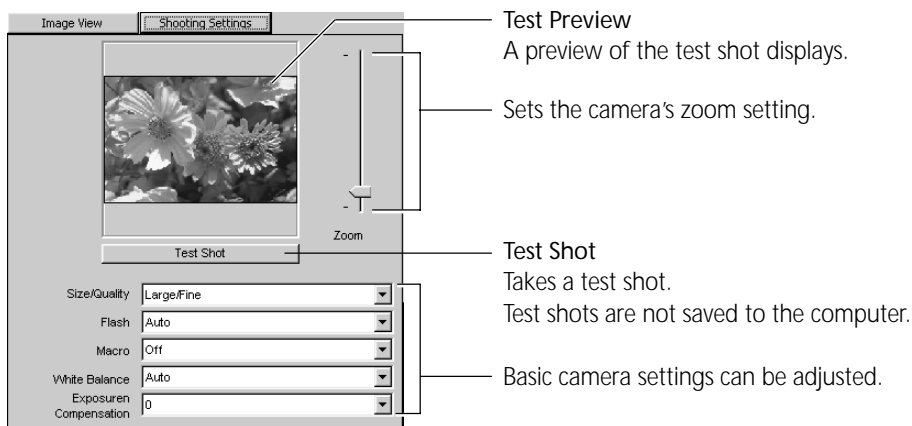
## Precautions when Shooting with RemoteCapture

- If your computer is set to go into standby mode, there is no guarantee that RemoteCapture will continue to function after the computer has entered standby mode. Always turn off the standby function before you start shooting with RemoteCapture.
- The camera's auto power save setting is disabled while connected to RemoteCapture, and the power remains on until manually turned off. You are recommended to power the camera with a household power source while it is connected.
- Please note that the camera will not be able to shoot at the specified interval if it is shorter than the time required to send the image and save it on the computer.
- If the camera is set for "mirror lockup" shooting, the shutter will activate approximately two seconds after the release button is clicked in RemoteCapture. (Supported by the EOS D30 only)

## Setting Basic Shooting Settings in RemoteCapture

The camera's shooting settings can be adjusted by clicking the [Shooting Settings] tab in the RemoteCapture window.

Please adjust the shooting settings for the EOS D30 on the camera itself.





## Changing the Save Location and Other Preferences

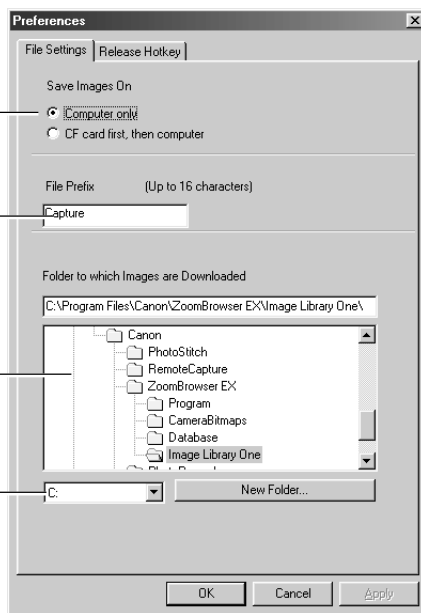
The Preferences dialog can be opened by clicking the RemoteCapture [File] menu and selecting [Preferences]. This dialog can be used to change the save location and settings.

Selects whether the image is saved only on the computer or on the camera's CF card too.

Sets the image file prefix. If the prefix is set to [Capture], for example, the first image will be named [Capture\_00001.jpg] and successive images will have higher numbers.

Sets the folder in which the image file is saved.

Selects a drive on the computer.





## Converting RAW Images

The RAW format records the image data as captured by the camera's image sensor without further processing by the camera. Although the data is compressed when recorded, the original data can be completely restored without any loss of quality, making it possible to obtain high-quality images. Moreover, the RAW image file format is extremely compact, creating files that are approximately one-third to one-quarter the size of an uncompressed file (RGB TIFF). Please refer to your Camera User Guide to learn how to set the camera to shoot in the RAW format.

The process of obtaining high-quality RGB signals from RAW format images (hereafter RAW images) is called "conversion." Since ZoomBrowser EX can be used to adjust the attributes of the original data, you can achieve the effects you wish while maintaining high image quality. In contrast, image data recorded in the RGB TIFF and other standard uncompressed file formats is irrevocably processed in the camera and must be further processed irrevocably by retouching software to change the attributes, which reduces the image quality.

Please note that ZoomBrowser EX or the TWAIN Driver are required to load RAW images onto a computer.

### Converting RAW Images without Adjusting the Quality

1. Select a RAW image from the Browser Display Area of ZoomBrowser EX.
2. Click the [File] menu and select [Convert RAW Images].  
The image is converted and saved in a new TIFF (8 bits/channel) file. To learn how to change the file format, please see "How to Change the File Format." (→ p. 41)

### Converting RAW Images with Quality Adjustment

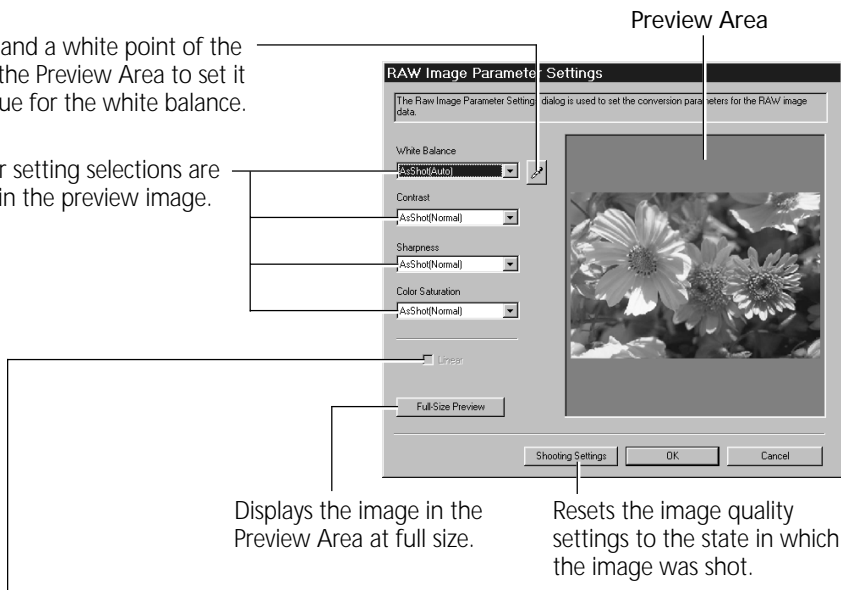
1. Select a RAW image from the Browser Display Area of ZoomBrowser EX.
2. Click the [File] menu and select [Convert RAW Images with User Defined Parameters].  
The RAW Image Parameter Settings dialog will display.
3. Select the quality settings and click [OK].  
The RAW image is converted according to the specified parameters and saved in a new TIFF (8 bits/channel) file. If multiple RAW images are selected, the parameters are applied only to the first image. When only one RAW image is adjusted, the changes are also reflected in the remaining images in the selection. To learn how to change the file format, please see "How to Change the File Format." (→ p. 41)



## RAW Image Parameter Settings Dialog

Click this and a white point of the image in the Preview Area to set it as the value for the white balance.

Parameter setting selections are reflected in the preview image.



Displays the image in the Preview Area at full size.

Resets the image quality settings to the state in which the image was shot.

Placing a check here applies linear processing to the contrast, sharpness and color saturation.

- The [Linear] option is only enabled when [TIFF 16 bits/channel] is selected as the file format.

### Precautions when Selecting and Adjusting the Attributes of Multiple RAW Images

Ensure that all images included in a multiple selection of RAW images are from the same camera before attempting to adjust the image attributes. The white balance will not adjust properly if images from different cameras are mixed and the [Manual] white balance option is selected in the RAW Image Parameter Settings dialog or if a white portion of the image is selected in the preview area.

### How to Change the File Format

1. Click the ZoomBrowser EX [File] menu and select [Preferences].  
The Preferences dialog will display.
2. Change the format in the Image Format tab and click [OK].

### Saving in the TIFF 16 Bits/Channel Format

When [TIFF 16 bits/channel] (supported by the EOS D30 only) is selected as the file format for saving RAW images, 16 bits of data is used to record each RGB channel. This image format can be used in several application programs, such as Adobe Photoshop LE. Formats other than TIFF 16 bits/channel all save the image using 8 bits per RGB channel.



## Backing Up Data

You are recommended to use the following procedures to back up your image data after you add, delete or change images from ZoomBrowser EX.

1. Click the ZoomBrowser EX [File] menu and select [Backup Database].  
When the backup is complete, the name of the backup file will display in a dialog. This file name is needed when the database requires restoring.

The database file may become corrupted if a system crash occurs for some reason when ZoomBrowser EX is being run at the same time as another software program. You should restore the data in this case. To avoid unintentional loss, you should back up your image data frequently.

### How to Restore the Database File from a Backup File

1. Click the ZoomBrowser EX [File] menu and select [Restore Database].
2. In the “Restore Database From” dialog, select the file to which the database was previously backed up and click [Open].  
Confirm that the backup file has the [.zbd] file extension.
3. In the “Restore Database To” dialog, input the name of the database to which the backup will be restored and click [Save].  
In most cases you are advised to select the corrupted database and overwrite it.
4. A confirmation dialog usually displays when the backup file is correctly restored.  
This will restore the database file to the state from which it was backed up.



# Loading Images with TWAIN-Compliant Programs

This section explains how to load images with TWAIN-compliant application programs using Adobe Photoshop LE or Adobe PhotoDeluxe Home Edition. Please refer to the manual for each application program for more details.

## Using Adobe Photoshop LE

### Installing the Software

#### Installing the TWAIN Driver

This program is required to load camera images into the TWAIN-compliant application programs. For instructions, see "Installing/Uninstalling the Software" (→ p. 7) or "Installing the USB Driver" (→ pp. 9, 12).

#### Installing Adobe Photoshop LE

Place the Adobe Photoshop LE CD-ROM in the drive, double-click [My Computer] on the Windows desktop, followed by the [Photosle] CD-ROM icon, the [English] and [Photosle] folders, and the [Setup.exe] file. Follow the on-screen instructions to complete the installation.

You must input the software serial number to install Adobe Photoshop LE. It can be found on the CD-ROM case.

### Starting the Software

#### Connecting the Camera to a USB Port

1. Connect the camera to the computer's USB port.

Refer to *Where to Find Instructions for Attaching Your Camera to a Computer* (→ p. ii) for connection instructions.

2. Set the camera to the mode for communicating with a computer.  
After a moment, an event dialog will allow you to select an application program to start.
3. Select Adobe Photoshop LE and click [OK].  
Adobe Photoshop LE will start.
4. Click the Adobe Photoshop LE [File] menu and select [Import] and [Select TWAIN\_32 Source].
5. Choose your camera model and click [Select].
6. Click the [File] menu and select [Import] and [TWAIN\_32]  
The TWAIN Driver will start. (→ p. 45)



## Connecting via a CF Card Reader or PC Card Slot

1. Place the CF card into the CF card reader or into the PC card adapter and then into the PC card slot.

Refer to *Where to Find Instructions for Attaching Your Camera to a Computer* (→ p. ii) for connection instructions.

2. Click the Windows [Start] menu and select [Programs], [Adobe], [Photoshop Limited Edition] and [Adobe Photoshop Limited Edition].  
Adobe Photoshop LE will start.
3. Click the [File] menu and select [Import] and [Select TWAIN\_32 Source]
4. Choose an appropriate source and click [Select].  
Select either [Canon XXX USB], where the XXX represents your camera model name, or [Canon Digital Camera RS-232C] as the source as appropriate.  
If several models are listed, select the one that corresponds to your camera.
5. Click the [File] menu and select [Import] and [TWAIN\_32]  
The TWAIN Driver will start.

## Connecting the Camera to a Serial Interface

1. Attach the camera to the computer with the serial cable.

Refer to *Where to Find Instructions for Attaching Your Camera to a Computer* (→ p. ii) for connection instructions.

2. Set the camera to the mode for communicating with a computer.
3. Click the Windows [Start] menu and select [Programs], [Adobe], [Photoshop Limited Edition] and [Adobe Photoshop Limited Edition].  
Adobe Photoshop LE will start.
4. Click the [File] menu and select [Import] and [Select TWAIN\_32 Source]
5. Choose [Canon Digital Camera RS-232C] and click [Select].
6. Click the [File] menu and select [Import] and [TWAIN\_32]  
The TWAIN Driver will start.



## Guide to the TWAIN Driver Window

### Preferences Button

Displays and changes the image transmission settings. (→ p. 54)

### Camera Settings Button

Adjust or check camera settings. (→ p. 18)

### Rotate 90 Degrees Buttons

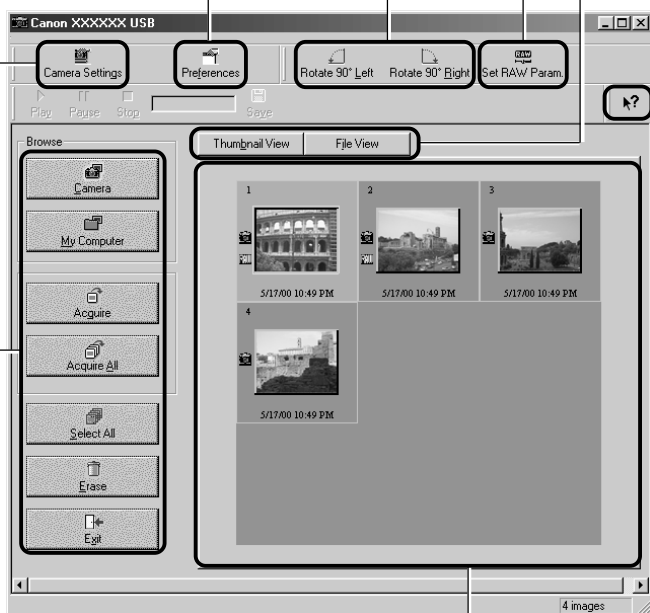
Rotates the selected image left or right 90 degrees.

### Set RAW Param. Button

Sets the image quality settings for RAW images (→ p. 53)

### Display Style Buttons

### Help Button



### Main Buttons

These buttons control the main commands, such as those for loading images and exiting the TWAIN driver.

### Thumbnail Display Area

Image thumbnails display here when the camera is connected.



## Loading Images

The TWAIN Driver can display still images only. Please start ZoomBrowser EX to download movies to the computer.

### Downloading Images from the Camera

1. Click the [Camera] button.  
The camera images will appear in the Thumbnail Display Area.
2. Select the images you wish to download and click the [Acquire] button.  
The images will appear in the Adobe Photoshop LE window.
3. Click the [Exit] button to close the TWAIN Driver.  
To save the loaded images, click the Adobe Photoshop LE [File] menu and select [Save As]. Input a file name and change the file location and format settings if necessary.

### Downloading Images Directly from a CF Card

1. Double-click the TWAIN Driver's [My Computer] button.  
The My Computer dialog will open.
2. Select the folder containing the images and click [OK].  
The CF card images will display in the Thumbnail Display Area.
3. Select the images you wish to download and click the [Acquire] button.  
The images will appear in the Adobe Photoshop LE window.
4. Click the [Exit] button to close the TWAIN Driver.  
To save the loaded images, click the Adobe Photoshop LE [File] menu and select [Save As]. Input a file name and change the file location and format settings if necessary.



# Using Adobe PhotoDeluxe Home Edition

## Installing the Software

### Installing the TWAIN Driver

This program is required to load camera images into the TWAIN-compliant application programs. For instructions, see "Installing/Uninstalling the Software" (→ p. 7) or "Installing the USB Driver" (→ p. 9, 12).

### Installing Adobe PhotoDeluxe Home Edition

Place the Adobe PhotoDeluxe Home Edition CD-ROM in the drive, click [ReadMe & Guide] and [Install Guide] in the window that displays.

The serial number shown during installation will be required for the user registration process.

## Starting the Software

### Connecting the Camera to a USB Port

1. Connect the camera to the computer's USB port.

Refer to *Where to Find Instructions for Attaching Your Camera to a Computer* (→ p. ii) for connection instructions.

2. Set the camera to the mode for communicating with a computer.  
After a moment, an event dialog will allow you to select an application program to start.
3. Select [PhotoDeluxe Home Edition] and click [OK].  
Adobe PhotoDeluxe Home Edition will start and open the TWAIN driver. Use the TWAIN driver to load images. (→ p. 50)

### Connecting via a CF Card Reader or PC Card Slot

1. Place the CF card into the CF card reader or into the PC card adapter and then into the PC card slot.

Refer to *Where to Find Instructions for Attaching Your Camera to a Computer* (→ p. ii) for connection instructions.

2. Start Adobe PhotoDeluxe Home Edition.
3. Click [Get & Fix Photo] at the upper left of the window.
4. Click [Get Photo] from the icons that display and select [Cameras].



5. Click the [1 Camera] tab.  
In the [Camera Models] option, confirm that [Canon XXX USB] (XXX will be replaced by your camera model name) or [Canon Digital Camera RS-232C] is selected. If several models are listed, select the one that corresponds to your camera.
6. Click the [Open Camera] button.  
The TWAIN driver will start. Use it to load images. (→ p. 50)

## Connecting the Camera to a Serial Interface

1. Attach the camera to the computer with the serial cable.

Refer to *Where to Find Instructions for Attaching Your Camera to a Computer* (→ p. ii) for connection instructions.

2. Set the camera to the mode for communicating with a computer.
3. Start Adobe PhotoDeluxe Home Edition.
4. Click [Get & Fix Photo] at the upper left of the window.
5. Click [Get Photo] from the icons that display and select [Cameras].
6. Click the [1 Camera] tab.  
In the [Camera Models] option, confirm that [Canon Digital Camera RS-232C] is selected.
7. Click the [Open Camera] button.  
The TWAIN driver will start.
8. Click the [Communication Settings] button.
9. Set the port type, port name and baud rate (transfer speed) settings and click the [OK] button.  
For instructions on the communication settings, please refer to page 107.



## Guide to the TWAIN Driver Window

### Preferences Button

Displays and changes the image transmission settings. (→ p. 54)

### Camera Settings Button

Adjust or check camera settings. (→ p. 18)

### Rotate 90 Degrees Buttons

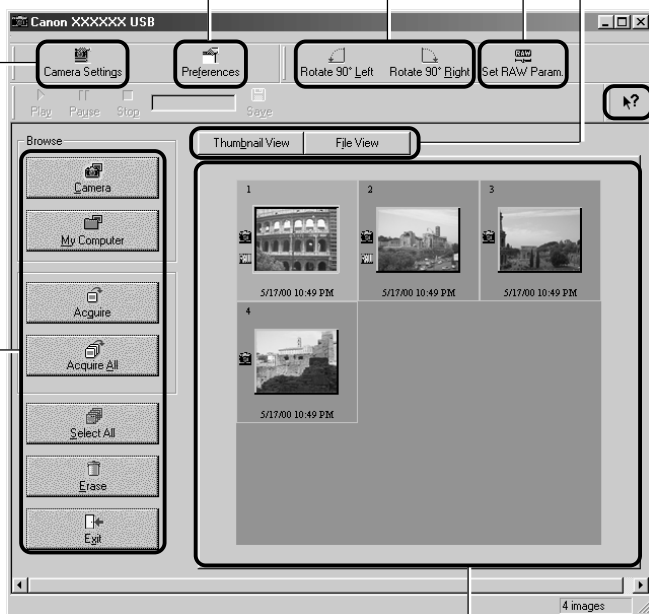
Rotates the selected image left or right 90 degrees.

### Set RAW Param. Button

Sets the image quality settings for RAW images (→ p. 53)

### Display Style Buttons

### Help Button



### Main Buttons

These buttons control the main commands, such as those for loading images and exiting the TWAIN driver.

### Thumbnail Display Area

Image thumbnails display here when the camera is connected.



## Loading Images

The TWAIN Driver can display still images only. Please start ZoomBrowser EX to download movies to the computer.

### Downloading Images from the Camera

1. Click the [Camera] button.  
The camera images will appear in the Thumbnail Display Area.
2. Select the images you wish to download and click the [Acquire] button.  
The images will appear in the Adobe Photoshop LE window.
3. Click the [Exit] button to close the TWAIN Driver.  
To save the loaded images, click the Adobe Photoshop LE [File] menu and select [Save As]. Input a file name and change the file location and format settings if necessary.

### Downloading Images Directly from a CF Card

1. Double-click the TWAIN Driver's [My Computer] button.  
The My Computer dialog will open.
2. Select the folder containing the images and click [OK].  
The CF card images will display in the Thumbnail Display Area.
3. Select the images you wish to download and click the [Acquire] button.  
The images will appear in the Adobe Photoshop LE window.
4. Click the [Exit] button to close the TWAIN Driver.  
To save the loaded images, click the Adobe Photoshop LE [File] menu and select [Save As]. Input a file name and change the file location and format settings if necessary.



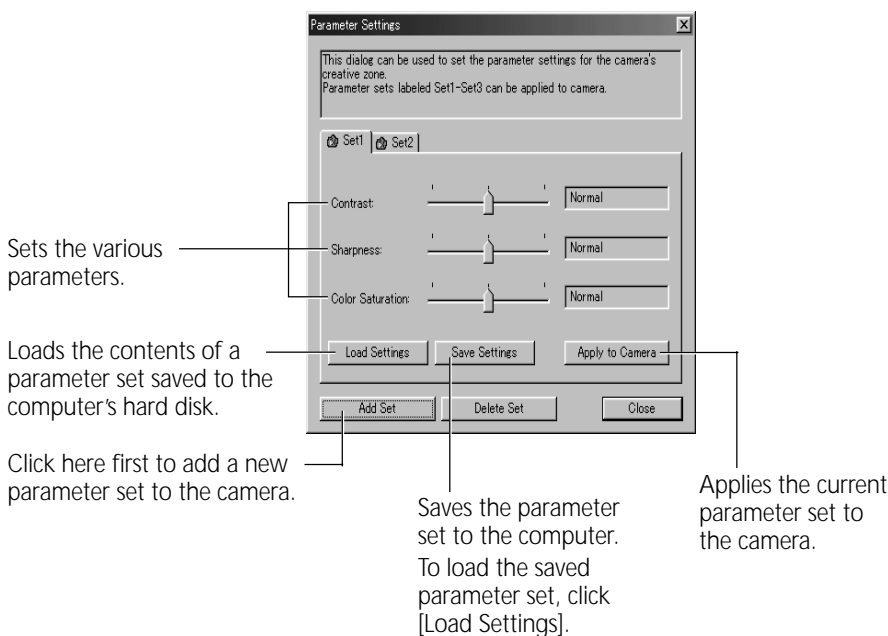
## Setting the Parameters (EOS D30 Only)

Up to three sets of parameters for loading images can be set in the TWAIN Driver using the Parameter Settings dialog in addition to the parameters already set on the camera.

Please see the *Camera User Guide* to learn how to select the parameters for the camera that are set with the computer.

1. Click the [Camera Settings] button in the TWAIN Driver window.  
The Camera Settings dialog will display.
2. Click the [Parameters] button.  
The Parameter Settings dialog will display.
3. Click [Add Set].
4. Set each parameter.
5. Click [Apply to Camera].  
The settings will be applied to the camera.

### Parameter Settings Dialog





## Converting RAW Images

The RAW format records the image data as captured by the camera's image sensor without further processing by the camera. Although the data is compressed when recorded, the original data can be completely restored without any loss of quality, making it possible to obtain high-quality images. Moreover, the RAW image file format is extremely compact, creating files that are approximately one-third to one-quarter the size of an uncompressed file (RGB TIFF). Please refer to your *Camera User Guide* to learn how to set the camera to shoot in the RAW format.

The process of obtaining high-quality RGB signals from RAW format images (hereafter RAW images) is called "conversion." Since TWAIN Driver can be used to adjust the attributes of the original data, you can achieve the effects you wish while maintaining high image quality. In contrast, image data recorded in the RGB TIFF and other standard uncompressed file formats is irrevocably processed in the camera and must be further processed irrevocably by retouching software to change the attributes, which reduces the image quality.

Please note that ZoomBrowser EX or the TWAIN Driver are required to load RAW images onto a computer.

### Converting RAW Images without Adjusting the Quality

1. Select a RAW image from the Thumbnail Display Area of the TWAIN Driver window.
2. Click the [Acquire] button.

The image will be converted and sent to Adobe Photoshop LE at 8 bits per RGB. To learn how to change the file transmission format, please see "How to Change the File Transmission Format." (→ p. 54)



## Converting RAW Images with Quality Adjustment

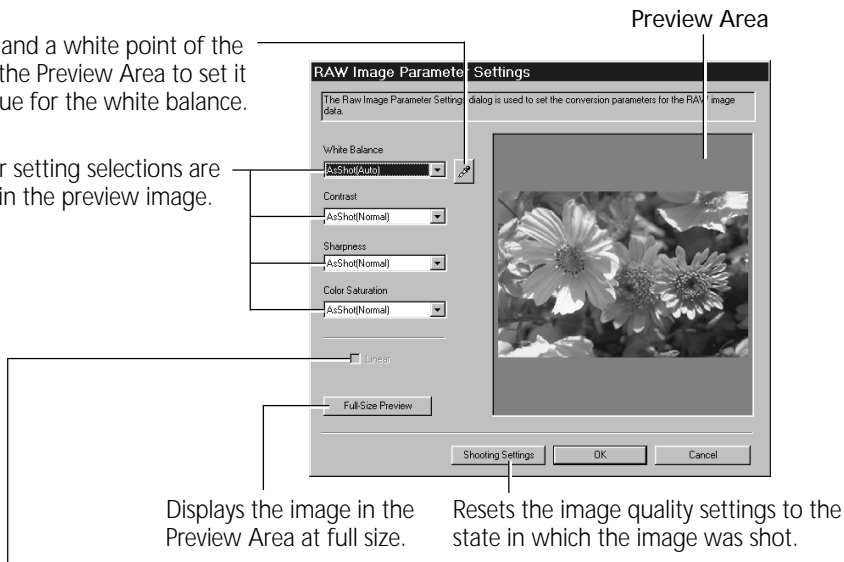
1. Select a RAW image from the Thumbnail Display Area of the TWAIN Driver window.
2. Click the TWAIN Driver [Set RAW Param.] button.  
The RAW Image Parameter Settings dialog will display.
3. Select the quality settings and click [OK].  
When an image is adjusted, the "RAW" symbol shown on its thumbnail will change from gray to green. If multiple RAW images are selected, the parameters are applied only to the first image. When only one RAW image is adjusted, the changes are also reflected in the remaining images in the selection.
4. Click the [Acquire] button.  
The RAW image will be converted according to the specified parameters and the data will be sent to Adobe Photoshop LE at 8 bits per RGB channel.  
To learn how to change the file transmission format, please see "How to Change the File Transmission Format" on the next page.
  - The image quality settings return to the default settings when the TWAIN Driver is closed. The settings will also be reset to the defaults if the connection to the camera is broken, or if the TWAIN Driver window is refreshed as a result of an image being shot or deleted with the camera while it is connected.



## RAW Image Parameter Settings Dialog

Click this and a white point of the image in the Preview Area to set it as the value for the white balance.

Parameter setting selections are reflected in the preview image.



Displays the image in the Preview Area at full size.

Resets the image quality settings to the state in which the image was shot.

Placing a check here applies linear processing to the contrast, sharpness and color saturation.

- The [Linear] option is only enabled when [TIFF 16 bits/channel] is selected as the file format.

### Precautions when Selecting and Adjusting the Attributes of Multiple RAW Images

Ensure that all images included in a multiple selection of RAW images are from the same camera before attempting to adjust the image attributes. The white balance will not adjust properly if images from different cameras are mixed and the [Manual] white balance option is selected in the RAW Image Parameter Settings dialog or if a white portion of the image is selected in the preview area.

### How to Change the File Transmission Format

1. Click the [Preferences] button in the TWAIN Driver window.  
The Preferences dialog will display.
2. Change the transmission format in the [Send RAW image data to the application] option and click [OK].

### Transmitting in the TIFF 16 Bits / Channel Format

When [16 bits per color channel] (supported by the EOS D30 only) is selected as the transmission option for RAW images, images can be transmitted to the application at 16 bits per RGB channel. Although colors are expressed more vividly with the 16-bit setting than the 8-bit setting, the file size increases dramatically. Moreover, some image editing applications function only partially with files of this format or cannot open them at all.



# Troubleshooting the USB Driver Installation

## Check This First

1. Is the camera connected to the computer correctly?

Refer to *Where to Find Instructions for Attaching Your Camera to a Computer* (→ p. ii) for connection instructions.

2. Is the camera power on?
3. Is the battery charge sufficient?

We suggest that you use the AC adapter to power a camera connected to a computer.

You will not be able to check the USB driver status if there is a problem with any of the items above.

If the “Add New Hardware Wizard” (in Windows 2000 it is the “Found New Hardware Wizard”) appears while performing any of the steps above, reinstall the USB driver using the procedures in the Installing the USB Driver section. (→ p. 9, 12)

If the three potential problems above are OK, first uninstall the USB driver with the procedures below before reinstalling it according to the instructions in the Installing the USB Driver section. (→ p. 9, 12)

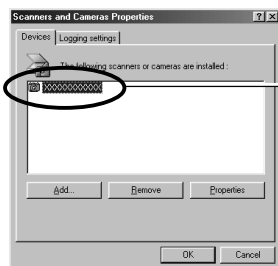
## Uninstalling the USB Driver from Windows 98

### Check the USB Driver Status

- Does your camera model name appear in the Windows “Scanners and Cameras Properties” dialog?

Display the “Scanners and Cameras Properties” dialog with the following steps.

1. Click the [Start] menu and select [Settings] and [Control Panel].
2. Double-click the [Scanners and Cameras] icon.

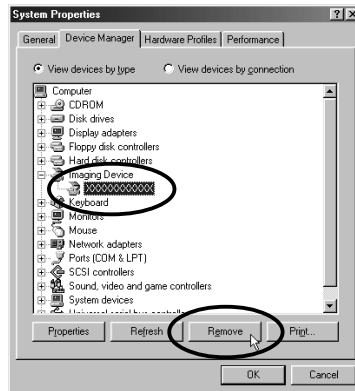
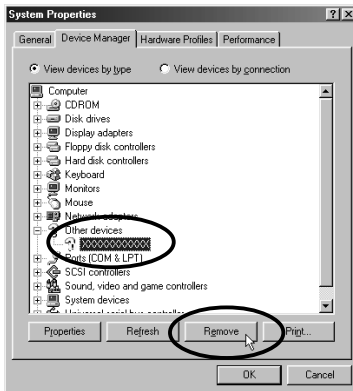


Check to see if your camera model appears here. The names of scanners and other devices for which drivers have already been installed will show in this window.



## What to Do if Your Camera Model Name Is Not in the “Scanners and Cameras Properties” Device List or if the [Scanners and Cameras] Icon Is Not in the Control Panel

1. Double-click the [System] icon in the Control Panel and check the [Device Manager] tab.
2. Check the [Other devices] or [Imaging Devices] categories for an item corresponding to your camera model. Delete it with the following procedures.



1. Select the item corresponding to your camera model and click the [Remove] button.
2. Click the [OK] button in the confirmation dialog.
3. Click the [OK] button to close the “System Properties” dialog.

Delete all copies if the item corresponding to your camera model appears in more than one category, such as the [Imaging Devices] and [Other Devices] categories, or if it is duplicated in the [Other Devices] category.

3. On the Windows desktop, double-click the [My Computer] icon, [C:] icon, [Windows] folder, and [Inf] folder in succession.

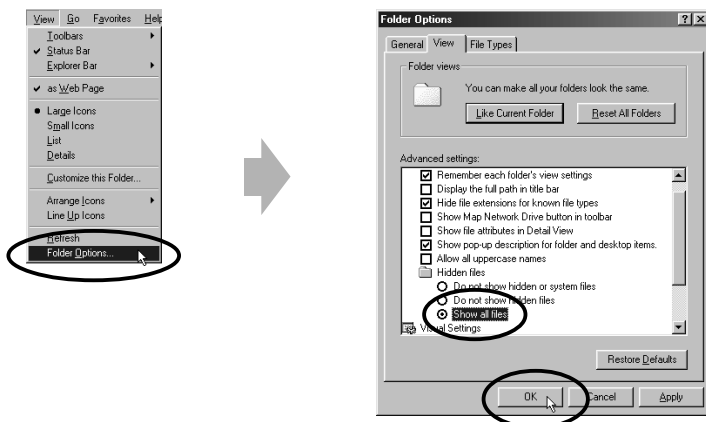




## What to Do if the [Inf] Folder Is Not Visible in the [Windows] Folder

- Follow the procedures below to set the folder options to the "Show all files" setting.
  - Click the [View] menu and select [Folder Options].
  - Click the [View] tab.
  - In the [Hidden files] category, select [Show all files].
  - Click the [OK] button to close the "Folder Options" dialog.

This will show all the previously hidden files.



- Find and delete the [Drvdata.bin] and [Drvidx.bin] files.



**The [Inf] folder contains numerous files. Ensure that you double-check the file names before you delete any files. Deleting the wrong file may, in the worst case scenario, result in the failure of your computer to run the Windows operating system.**

- Double-click the [Other] folder inside the [Inf] folder.



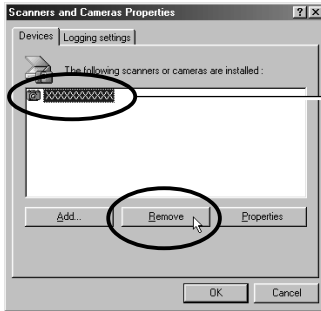
- Find and delete the [Canon.IncCanon\_DC] file.  
Skip this step if this file is not present in the [Other] folder.





## What to Do if Your Camera Model Appears in the “Scanners and Cameras Properties” Device List

1. Select the name of your camera model and click the [Remove] button.



Your camera model name will appear here.

2. Click [OK] to close the “Scanners and Cameras Properties” dialog.
3. Delete the [Drvdata.bin], [Drvdx.bin] and [Canon.IncCanon\_DC] files using steps 3 on page 56 to 6 on page 57.

## Uninstalling the USB Driver from Windows 2000

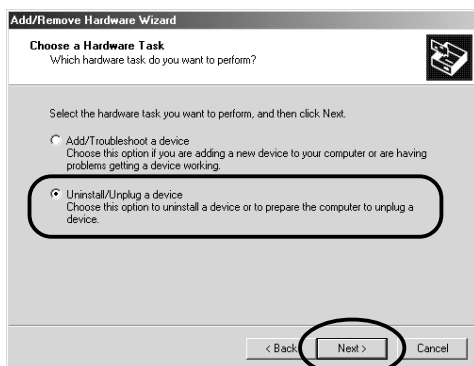
Begin by logging onto the computer as an Administrator and then uninstall the USB driver.

1. Double-click the [Add/Remove Hardware] icon in the control panel. After the “Add/Remove Hardware Wizard” starts, click the [Next] button.

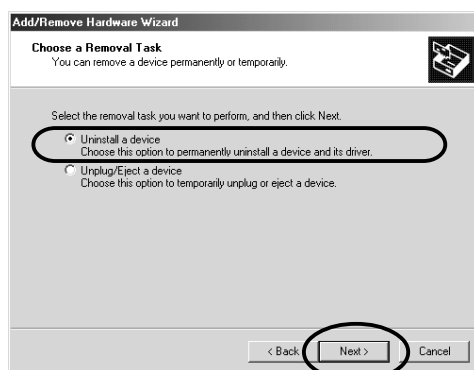




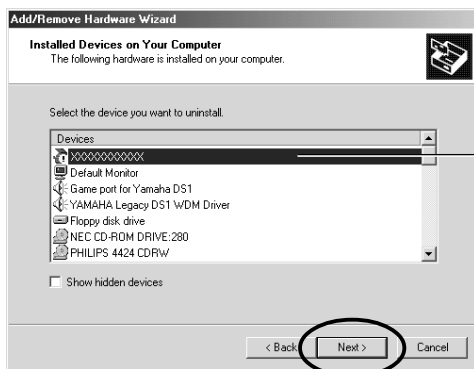
2. Select [Uninstall/Unplug Device] and click the [Next] button.



3. Select [Uninstall a Device] and click the [Next] button.



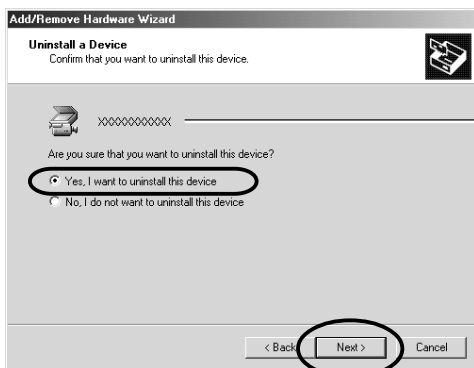
4. Select the name of your camera model from the list that displays and click the [Next] button.



Your camera model name  
will appear here.



5. In the dialog shown below, select [Yes, I want to uninstall this device] and click the [Next] button.



Your camera model name will appear here.

Click the [Finish] button when the "Add/Remove Hardware Wizard complete" message displays.

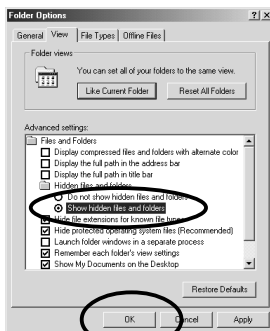
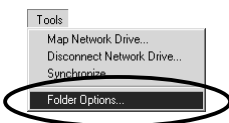
6. On the desktop, double-click the [My Computer] icon, [C:] icon, [Winnt] folder, and [Inf] folder in succession.



## What to Do if the [Inf] Folder Is Not Visible in the [Winnt] Folder

1. Open the [Winnt] folder.
2. Click the [Tools] menu and select [Folder Options].
3. Click the [View] tab.
4. In the [Advanced Settings] category, find the [Hidden Files and Folders] subcategory and select [Show hidden files and folders].
5. Click the [OK] button to close the "Folder Options" dialog.

This will show all the previously hidden files and folders.





## 7. Look for files starting with [Oem\*].

A number such as 0 or 1 will appear in place of the "\*" after the "Oem" prefix in the file name.

For each [Oem\*] file there is a companion [Oem\*.pnf] file with the same number following the "Oem" prefix (e.g. the Oem0 and Oem.pnf files form one set of Oem files).

- Please note that numerous groupings of "Oem0" files may be present in the [Inf] folder.

## 8. Search for the [Oem\*] files for Canon digital cameras.

Double-click a file to open it in the Windows Notepad accessory and look for [;\*\*\* Canon Digital Camera USB Setup File \*\*\*] in the first line. If you find it, note down the file name and close Notepad.

## 9. Delete the [Oem\*] file and corresponding [Oem\*.pnf] file.

Ensure that you have the correct files before deleting them.

**The [Inf] folder contains numerous files. Ensure that you double-check the file names before you delete any files. Deleting the wrong file may, in the worst case scenario, result in the failure of your computer to run the Windows operating system.**







# Using the Software on the Macintosh Platform

<b>Introducing the Software .....</b>	<b>64</b>
Camera and Software Compatibility .....	67
<b>System Requirements .....</b>	<b>68</b>
<b>Installing / Uninstalling the Software .....</b>	<b>69</b>
<b>Using ImageBrowser the First Time</b>	
(From Loading to Printing) .....	71
<b>Using Additional ImageBrowser Functions .....</b>	<b>79</b>
Displaying Images .....	79
Organizing Images .....	82
Erasing Images .....	83
Saving Computer Images to a CF Card in the Camera .....	84
Adding Sound Annotations to Images .....	84
Editing Camera Slide Shows .....	84
Editing the Print Order Settings (DPOF) .....	85
Adjusting Images for Transmission by E-mail .....	86
Merging Panoramic Images with PhotoStitch .....	87
Editing and Applying Special Effects to Images .....	88
Shooting with RemoteCapture .....	89
Converting RAW Images .....	93
<b>Loading Images with Plug-In Compliant Programs .....</b>	<b>95</b>
Using Adobe Photoshop LE .....	95
Using Adobe PhotoDeluxe .....	99
Setting the Parameters (EOS D30 only) .....	103
Converting RAW Images .....	104
<b>Troubleshooting the Computer Connection .....</b>	<b>107</b>
<b>Canon Customer Support .....</b>	<b>108</b>
<b>Adobe Customer Support .....</b>	<b>109</b>



# Introducing the Software

This section introduces the powerful software programs for the Macintosh platform contained on the CD-ROM included with the camera.

Some camera models do not support some of the software functions. Please check the Camera and Software Compatibility chart to confirm the compatibility of your camera. (→ p. 67)



## Canon Digital Camera Solution Disk

### ImageBrowser

To load camera images, start ImageBrowser.

#### Camera Connection Functions

(Also effective for CF card readers or PC card readers)

- Displays camera images.
- Downloads still images and movies from the camera to the computer.
- Loads and saves RAW images in the RAW format.
- Converts and saves RAW images in other formats.
- Saves computer images to a CF card in the camera.
- Edits the print order settings (DPOF-compliant settings) of images on a CF card.
- Edits slide shows for replay on the camera.
- Connecting to a USB port automatically starts ImageBrowser and displays the camera images.
- Sets the camera parameters.

#### Image File Management Functions

- Displays, moves, copies or deletes images stored on computer disks.
- Allows simple editing procedures, such as image color adjustments and cropping.
- Displays all the files in a specified folder at once.
- Displays files in chronological order in a window that looks like a time tunnel.
- replays images from the computer one-by-one at full screen size to simulate a slide show.

#### Image Printing Functions

- Prints multiple images on the same page.
- Allows you to freely resize images and change layouts.
- Allows you to place titles or captions anywhere on the page.

#### Supports PhotoStitch Panoramas

- Allows you to select camera images or images registered with ImageBrowser and start PhotoStitch from within ImageBrowser to merge a series of images into a panorama in a few simple steps.



## **Supports Adobe Photoshop LE or PhotoDeluxe**

- Allows you to select images registered with ImageBrowser and start one of these photo-retouching programs from within ImageBrowser to edit and apply special effects to your images.

## **Adjusting Images for Transmission by E-mail**

- Allows you to adjust image size and compression settings so that large image files can be made smaller for transmission as e-mail attachments.

## **PhotoStitch**

- Effortlessly merges images that are shot over several frames with a camera.
- Automatically arranges images shot in Stitch Assist mode into the correct order and effortlessly merges them.
- Merges any number of images horizontally or vertically, or in a matrix format.
- Makes images with straight lines appear natural not crooked when merged. (Select the wide display format.)
- A 360-degree scene shot in several frames can be merged into a 360-degree image and saved in the QuickTime VR format, making it appear as if you were standing in the middle of the image looking about in all directions.

## **RemoteCapture**

- Connecting via a USB port allows you to release the camera's shutter button from the computer. The images load directly into the computer.
- Connecting via a USB port also allows you to load images directly into the computer by clicking the camera's shutter button.
- Allows interval shooting with custom interval and frame settings.

## **Plug-In Module**

### **Canon Digital Camera Plug-In Module**

The Plug-In Module is the driver utility program that works within plug-in compliant application programs, such as Adobe Photoshop LE or Adobe PhotoDeluxe, to load camera images directly into the application program. The Plug-In Module is started from within the plug-in compliant application program. It cannot be used as a stand-alone program.

## **Apple QuickTime**

- Installing Apple QuickTime allows you to replay the movies you shot or view images in the QuickTime VR format that you merged with PhotoStitch.





## **Adobe Photoshop LE CD-ROM\***

### **Adobe Photoshop LE**

- Allows you to edit images, apply special effects, print and create sophisticated graphics for the web.



## **Adobe PhotoDeluxe Home Edition CD-ROM\***

### **Adobe PhotoDeluxe**

- Allows you to edit images and effortlessly create greeting cards, birthday cards and calendars.

\* The bundled retouching software varies between camera models. Please refer to the System Map for the program supplied with your camera.



## Camera and Software Compatibility

The Canon Digital Camera Solution Disk contains a number of software programs and drivers. Check the chart below for the compatibility of your particular camera model with each program's special functions.

Function		Software	Model				
			EOS D30	PowerShot Series			
				Pro90 IS	G1	S10/S20	S100 DIGITAL ELPH
Computer Interface	USB*		●	●	●	●	●
	Serial		–	●	●	●	–
Downloading Camera Images		ImageBrowser Plug-In Module	●	●	●	●	●
Downloading Movies		ImageBrowser	–	●	●	–	–
RAW Image Conversion		ImageBrowser Plug-In Module	●	●	●	–	–
Uploading Images to Camera		ImageBrowser	●	●	●	●	●
Editing Camera Slide Show		ImageBrowser	–	●	●	●	–
Editing Camera Print Settings (DPOF)		ImageBrowser	●	●	●	●	●
Merging Images Shot in Stitch Assist Mode		ImageBrowser	–	●***	●***	●	●
Shooting from the Computer		RemoteCapture**	●	●	●	–	–

\* Only compatible with Power Macintosh NEW G3/G4, PowerBook G3, iMac and iBook models with built-in USB ports.

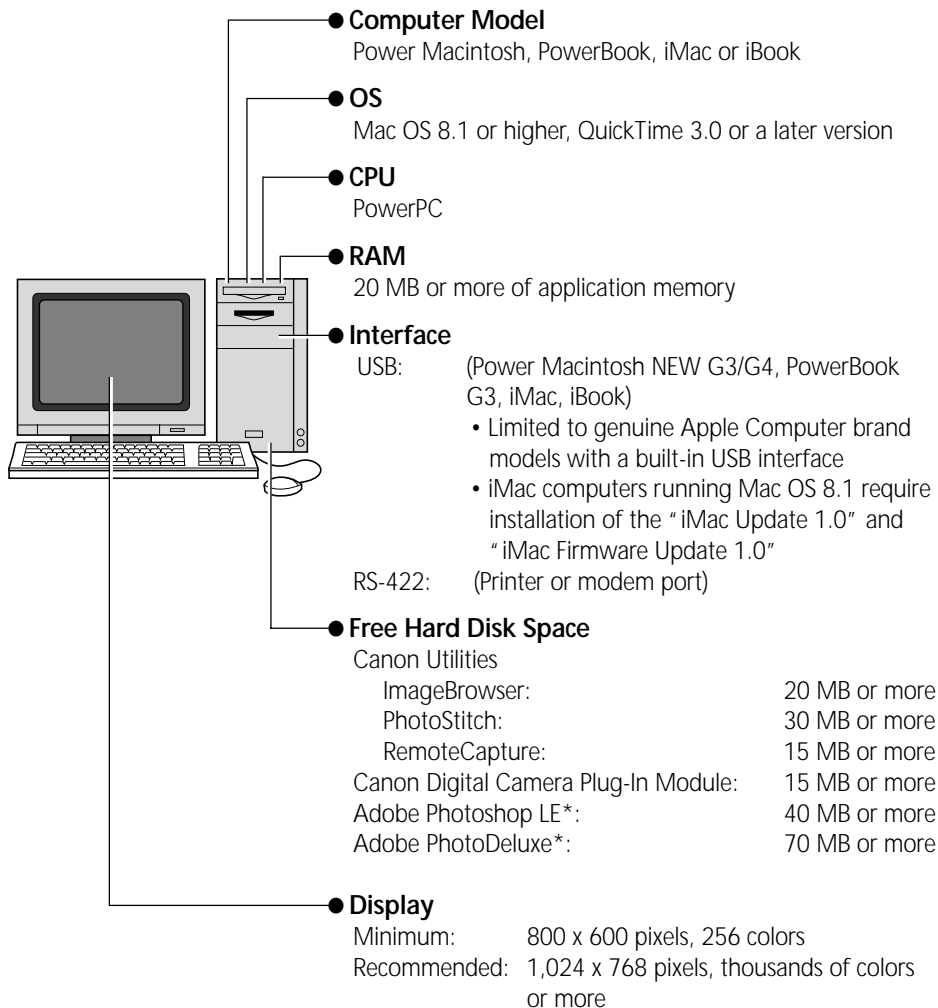
\*\* Only compatible with the USB interface.

\*\*\* Images shot with Wide Converter, Tele-converter or Close-up Lens do not merge well in PhotoStitch.



# System Requirements

The following system requirements must be met to install and operate the software.



\* The bundled software varies between camera models. Please refer to the System Map for the programs supplied with your camera.

- A CD-ROM drive is required to install the software.
- QuickTime 4.1 is contained on the Canon Digital Camera Solution Disk.
- Plug-In Module is compatible with Adobe Photoshop 3.0 and later versions.

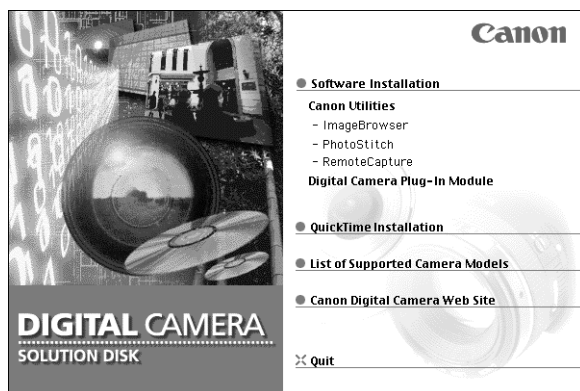


# Installing/Uninstalling the Software

## Installing from the Canon Digital Camera Solution Disk

1. Close any programs that are running.
2. Place the Canon Digital Camera Solution Disk in the CD-ROM drive.
3. Double-click the [CD-ROM] icon and the [Canon Digital Camera Installer] icon.

The installer panel will display.



4. Click [Software Installation].
5. Select the programs you wish to install and follow the on-screen instructions to install them.
6. Click the [Quit] button when the installation is complete and restart the computer if prompted.



## Installing from the Adobe Photoshop LE CD-ROM

Place the Adobe Photoshop LE CD-ROM in the drive and double-click the CD-ROM icon, the [Adobe Photoshop LE] folder and the [Install Photoshop LE] icon. Follow the on-screen instructions to continue with the installation.

You must input the software serial number to install Adobe Photoshop LE. It can be found on the CD-ROM case.

## Installing from the Adobe PhotoDeluxe CD-ROM

For installation instructions, please see the electronic guide (Getting Started.pdf) contained in the [Open Me First] folder on the Adobe PhotoDeluxe CD-ROM. Place it in the drive and click [Readme & Guide] and [Install Guide] in the window that displays.

Write down the serial number shown during installation because it is required for the user registration process.

## Uninstalling the Software

To uninstall a program, drag its folders to the Trash. Be careful, however, not to accidentally delete any of your images that may be stored in these folders.

For instructions on how to uninstall the Plug-In Module, open the [Canon Utilities] folder and [Digital Camera Plug-In] folder and read the [ReadMe] file.



# Using ImageBrowser the First Time

## (From Loading to Printing)

This section provides a simple explanation of the procedures for using ImageBrowser to perform each of the steps from loading to printing. Please refer to the ImageBrowser Help file for more details.

Some camera models do not support all of the connection interfaces. Please check the Camera and Software Compatibility chart to confirm your camera's compatibility. (→ p. 67)

### What to Do if a Warning Dialog Displays

- If a set period of time passes without a camera function being accessed when the camera is connected via the USB interface, a message on the computer display will ask if you wish to remain connected. If you do not access a function, the camera will close the connection after an additional minute passes. (The power will remain on and no message will appear if the camera is powered by a household power source or its auto power off function is set to Off (excluding PowerShot S10/S20 models)).
- To reopen the connection, press the camera's shutter button or main switch. Please see the *Camera User Guide* for details.

## Starting ImageBrowser

### USB Interface


1. Attach the camera to the computer with the USB cable.

Refer to *Where to Find Instructions for Attaching Your Camera to a Computer* (→ p. ii) for connection instructions.

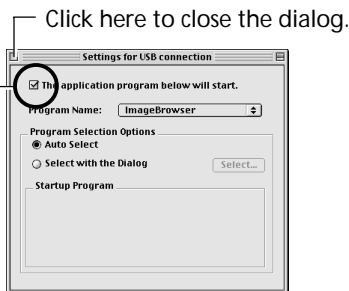
2. Set the camera to the mode for communicating with a computer.  
ImageBrowser will start automatically and display the Communication Settings dialog.
3. Confirm that [USB Port] and your camera model are selected and click the [Set] button.  
The images from the camera will display as small thumbnail images in the ImageBrowser Camera Window. (→ p. 74)



## How to Set ImageBrowser to Not Start Automatically

1. Open the Apple menu  and select [Control Panels] and [Canon USB Camera].  
The "Settings for USB Connection" dialog will display.
2. Click the [The application program below will start.] option to clear the check mark.
3. Click the close box at the upper left to close the dialog. ImageBrowser will cease to start automatically thereafter.

Clear the check mark to stop ImageBrowser from automatically starting.



## CF Card Reader or PC Card Slot Interface

1. Place the CF card into the CF card reader or into the PC card adapter and then into the PC card slot.

Refer to *Where to Find Instructions for Attaching Your Camera to a Computer* (→ p. ii) for connection instructions.

2. Start ImageBrowser.

Double-click the [Canon ImageBrowser] icon on the desktop to start the program.

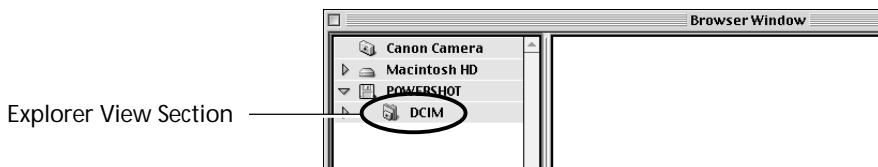


Canon ImageBrowser Icon

If the [Canon ImageBrowser] icon does not appear on the desktop, open the [Canon Utilities] folder and [ImageBrowser] folder and double-click the [ImageBrowser] icon.

3. Double-click the [DCIM] folder in the Explorer View Section.

The images from the CF card will display in ImageBrowser Camera Window as small thumbnail images. (→ p. 74)





## Serial Interface

1. Attach the camera to the computer with the serial cable.

Refer to *Where to Find Instructions for Attaching Your Camera to a Computer* (→ p. ii) for connection instructions.

2. Set the camera to the mode for communicating with a computer.

3. Start ImageBrowser.

Double-click the [Canon ImageBrowser] icon on the desktop to start the program.



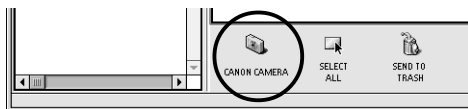
Canon ImageBrowser Icon

*Canon ImageBrowser*

If the [Canon ImageBrowser] icon does not appear on the desktop, open the [Canon Utilities] folder and [ImageBrowser] folder and double-click the [ImageBrowser] icon.

4. Click the [Canon Camera] button.

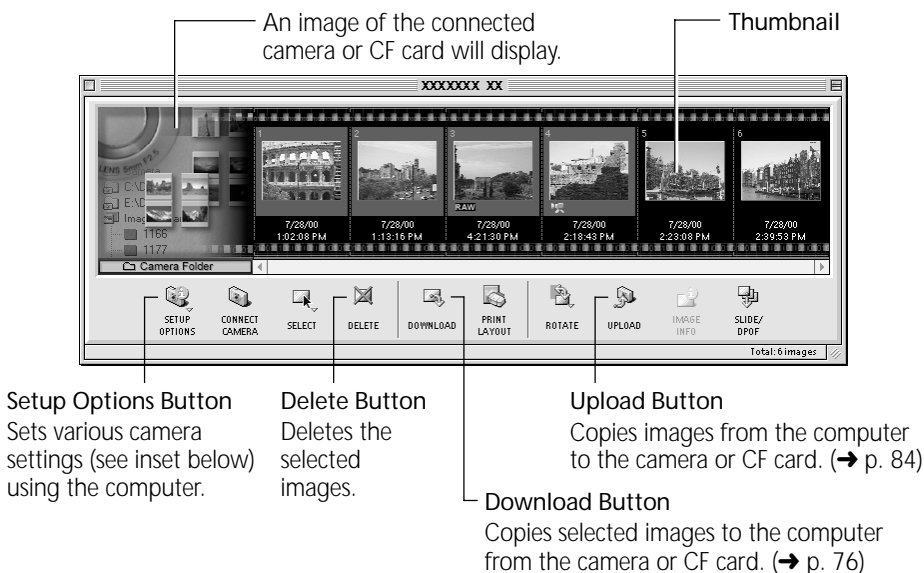
The camera's images will display as small thumbnail images in the ZoomBrowser EX Camera Window. (→ p. 74)





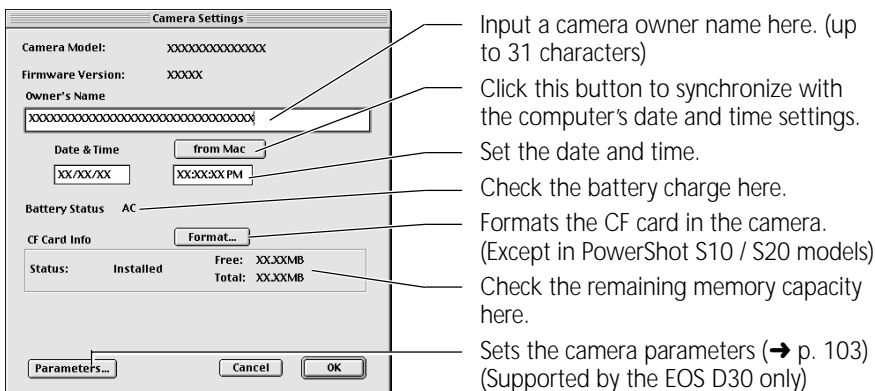
## The ImageBrowser Camera Window

The Camera Window will open when a connection to a camera or CF card is initiated. Thumbnail (small) images will display.



### How to Check and Change Various Camera Settings

- You can adjust the date, time and owner settings in the Camera Settings dialog using the computer when the camera is connected. You can also check the battery charge and remaining memory capacity.
- In ImageBrowser, click the [Setup Options] button to open the Camera Settings dialog. Or in Plug-In Module, click the [Camera Settings] button to open the Camera Settings dialog.
  - Check or change the settings.



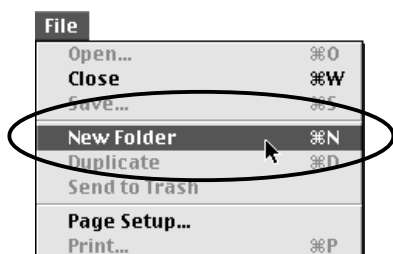


# Loading and Saving Images from the Camera

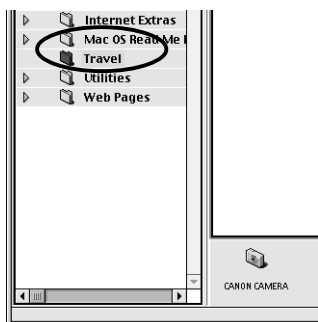
1. Select [Macintosh HD] in the Explorer View Section.



2. Create a new folder in which to save the images from the camera. Open the [File] menu and select [New Folder]. A folder with the name "Untitled" will be created. Click the folder and change the name as you wish.



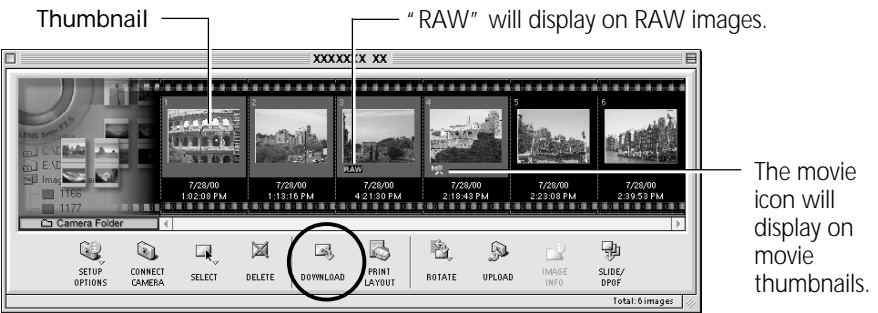
3. Select the new folder in the Explorer View Section.





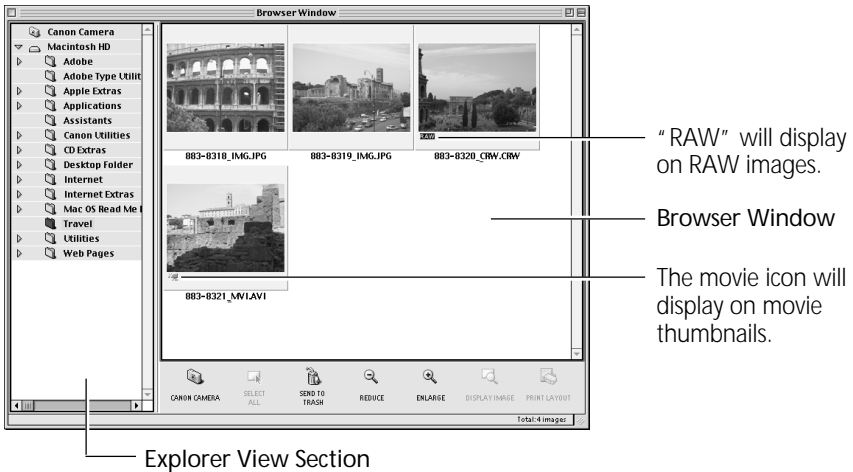
4. Select the images that you wish to download from the Camera Window and click the [Download] button.


Click the thumbnail you wish to select or press [Shift] and click to select multiple thumbnails.



The downloaded images will be saved to the computer disk and appear in the Browser Window.

- You can also download images to the computer by dragging them from the Camera Window and dropping them on the Browser Window or Explorer View Section.

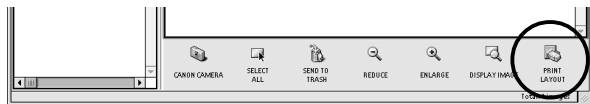


To disconnect the camera, click the close box  at the upper left of the Camera Window. The Camera Window will close.



# Printing Images

1. Select the image(s) you wish to print and click the [Print Layout] button.
  - Movie images cannot be printed.
  - You must convert RAW images before printing them (pp. 93-94, 104-106).

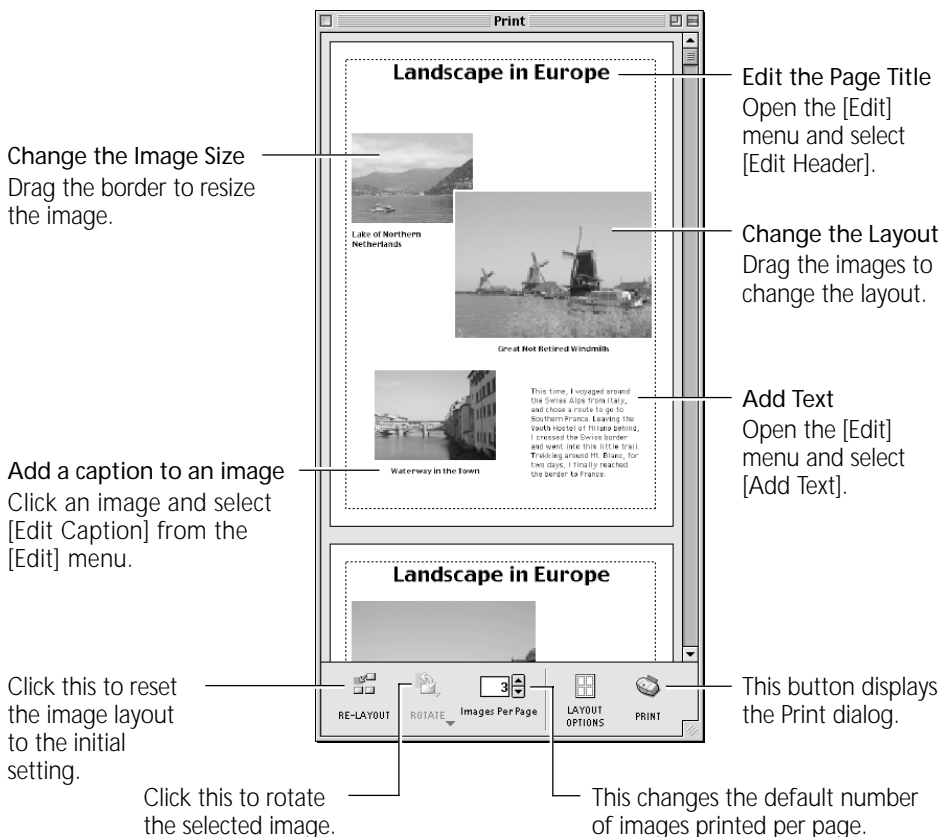


The Print window will display with the images arranged in an auto layout.

2. Adjust the print settings if you wish to change the page layout.
3. Click the [PRINT] button in the Print window.

## Print Window

Please see the ImageBrowser Help file for more details on the Print window.





## Setting the Image Size for Printing

### Fixed Photo Size

Images can be printed at standard photo print size. Since the images are printed without gaps between them, they look like photo prints when they are cut with a cutter.

1. Click the [Layout Options] button in the Print window.  
The Layout Options dialog will display.
2. In the [Layout Type] category, select [Fixed Photo Size].
3. Set the photo size and click [OK].

### Printing on Canon Perforated Paper

The [Canon Perforated Paper] option will be selectable in the Layout Options dialog if you are using a Canon BJ printer that supports Canon Perforated Paper media. Canon Perforated Paper has perforations at the preset dimensions allowing you to print at the specified size and simply tear along the perforated lines to produce an image with the appearance of a finished photo print. Please consult the BJ Solution Disk User's Guide for more details.

The [Photo Paper Pro 4" x 6"] paper stock included in the [Settings] category will be available for purchase starting from February 2001.





# Using Additional ImageBrowser Functions

This section explains the additional features of ImageBrowser. Please refer to the ImageBrowser Help file for more details.

Some of the software functions are not supported by all of the camera models. Please check the Camera and Software Compatibility chart to confirm your camera's compatibility. (→ p. 67)

## Displaying Images

### Zooming Images In and Out

You can zoom images in and out by clicking the  (REDUCE) or  (ENLARGE) button.

### Zooming a Single Image

Double-click an image in the Browser Window to display it in the Viewer Window.

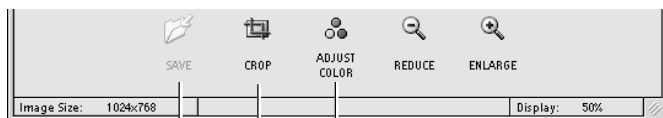


Double-click the target image.



Edit Panel

## About the Viewer Window Edit Panel



Save Button

Saves the edited image as a new file.

Adjust Color Button

Color, brightness and contrast can be adjusted in the Adjust Color dialog.

Crop Button

Drag the mouse cursor to select a crop area and click this button to trim unwanted portions of images.



## Replaying Movies

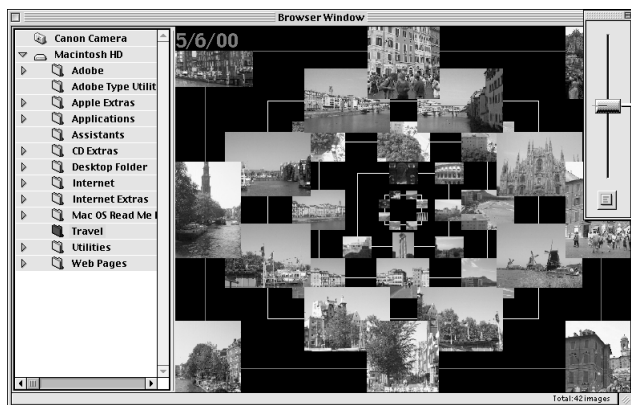
Double-click a thumbnail with the movie icon to start QuickTime Player and replay the movie.





## Displaying Images in Chronological Order

Select a folder, choose the [Display] menu and select [Switch to TimeTunnel]. All of the images in the selected folder will display in a time tunnel. To return to the Browser Window, choose the [Display] menu and select [Switch to Browser View].



Drag the tab up or down to go backward or forward in time.

## Showing Images in a Slide Show

The slide show function displays images saved onto the computer disk one-by-one at full-screen size as if they were part of a slide show.

1. Click the [Display] menu and select [Slide Show Options].
2. Select a play method.  
The "Slide Show Options" dialog will display. Set a play interval and a transition effect and click the [OK] button.
3. Select images from the ImageBrowser Browser Window for showing.
4. Click the [Display] menu and select [Slide Show].  
The selected images will play in order. The slide show will close after the last image is displayed. If the slide show is set to repeat, press the [Esc] key to close the slide show.

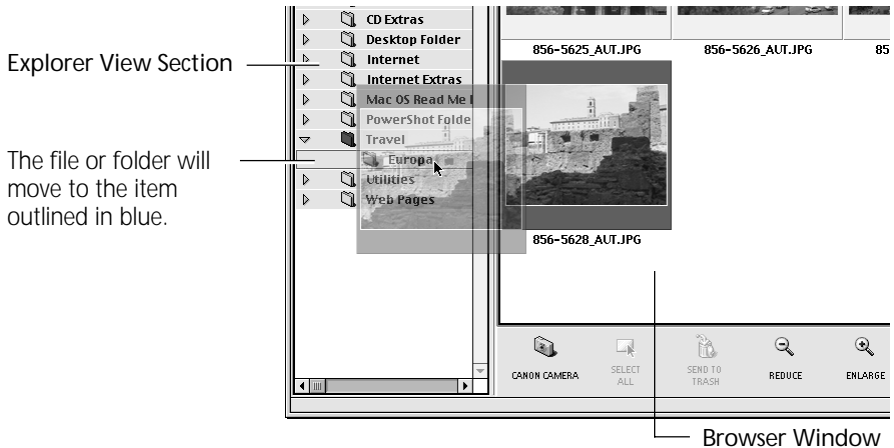


## Organizing Images

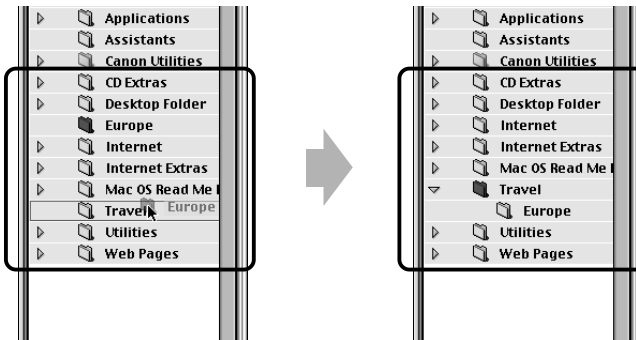
### Changing the File Location

You can move an image file or folder by dragging and dropping it in another location.

- (a) Drag and drop images from the Browser Window to another folder in the Explorer View Section.**



- (b) Drag and Drop a Folder within the Explorer View Section.**



### Refreshing the Contents of the Browser Window

If you have used the Macintosh Finder or another program to move or edit images that are registered with ImageBrowser, you should click the [Display] menu and select [Refresh].



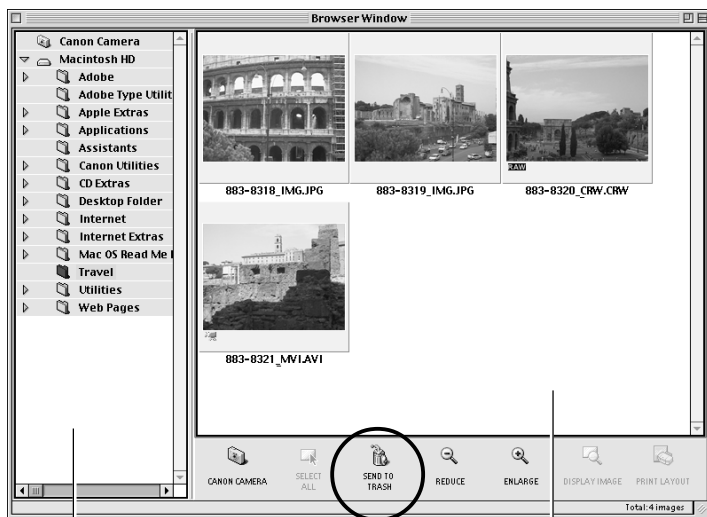
# Erasing Images

## Erasing Images Singly

Select the target image in the Browser Window and click the [Send to Trash] button.

## Erasing Images by Folder

1. Click the target folder in the Explorer View Section.  
The images in the folder will display in the Browser Window.
2. Click the [Send to Trash] button.



**Explorer View Section**  
Click on a folder in the Explorer View Section to delete all its images in one step.

**Send to Trash Button**

**Browser Window**  
Click the image in the Browser Window to delete a single image.

The deleted image files and folders are moved to the Trash folder on the desktop. To restore the deleted items, open the desktop Trash folder and drag and drop the target files or folders to their original locations.



## Saving Computer Images to a CF Card in the Camera

1. Open the Camera Window. (→ pp. 71-74)
2. Click the [Upload] button in the Camera Window.  
The "Select Images to Add" dialog will display.
3. Select the images from the computer and click the [Open] button.  
The "Save to Camera" dialog will display.
4. Select image size and resizing options and click the [Save to Camera] button.  
The selected image will be saved onto the camera's CF card.

## Adding Sound Annotations to Images

If your computer has a microphone, you can attach a sound annotation to an image by clicking it in the Browser Window, choosing the [Sound] menu and selecting [Record].

## Editing Camera Slide Shows

This function allows you to edit slide shows played by the camera. To edit slide shows shown on the computer display, see "Showing Images in a Slide Show." (→ p. 81)

1. Open the Camera Window. (→ pp. 71-74)
2. Click the [Slide/DPOF] button.  
The Edit Slide/DPOF window will display.
3. Click [Slide Show] on the window's upper left.  
The camera images will display on the left side. Images registered in the selected slide show will display on the right side.  
Slide Shows 1 to 3 correspond to the numbers of the slide shows that can be shown with the camera.
4. Drag and drop images from the area on the left to the area on the right to register them in the slide show.  
You can drag images to change their order in the area on the right. This order corresponds to the replay order.
5. Click the [Save to Camera] button.  
The slide show will be saved to the CF card in the camera.
6. Click the [Quit] button.



## Editing the Print Order Settings (DPOF)

You can specify which images on a CF card you wish to print as well as the number of copies. You can also select the print type and whether or not the shooting date and file number information is printed with the image. A convenient feature of these settings is that they comply with the DPOF (Digital Print Order Format) standards, which allow you to print on any DPOF-compliant digital printer or to order prints from a participating photo developing laboratory.

1. Open the Camera window. (→ pp. 71-74)
2. Click the [Slide/DPOF] button.  
The Edit Slide/DPOF window will display.
3. Click [Print Order (DPOF)] at the window's upper left.
4. Select the print type from among the [Standard Print], [Index Print] or [Both] options.
  - Standard .. Set the number of copies in the No. of Standard Print Copies column of the images you wish to print.
  - Index ..... Click for a check mark below the thumbnails selected for printing.
5. Click the [Save to Camera] button.  
The print order settings will be saved to the CF card in the camera.
6. Click the [Quit] button.

- A warning message will display if ImageBrowser encounters print settings data it does not support on a CF card with print settings created by a non-Canon brand DPOF-compliant digital camera. If any print settings on such a card are changed, all of them will be overwritten by ImageBrowser and lost.
- Some printers or photo developing laboratories may not be able to reflect all of the print settings in the output.



## Adjusting Images for Transmission by E-mail

You can adjust the image size and compression to reduce the file size of an image for transmission as an e-mail attachment.

1. Select the target image(s) in the Browser Window.
2. Click the [File] menu and select [Create Image for Email].
3. Adjust the image size and compression.

The e-mail image creation window will display.

Set the image size and quality and follow the on-screen messages to complete the procedures.

4. Click the [Finish] button.

When you click the [Finish] button, the image will appear in the [Email Images] folder and your e-mail program will start.

5. Create a new message.

Drag and drop the image from the [Email Images] folder into the message. Input your message, a subject, the recipient's address and send the message.

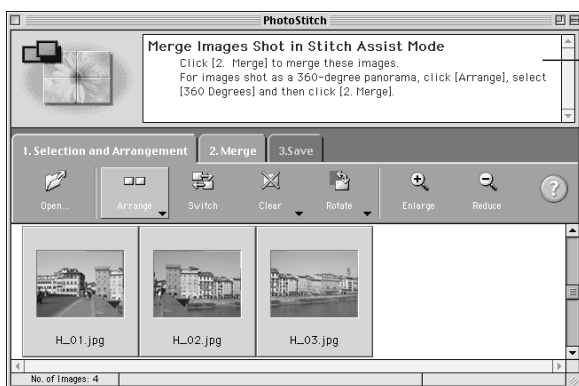
- Some e-mail programs will not start automatically. Start them manually if required.
- The image file to be sent via e-mail will be saved to the [ImageBrowser.mail] folder in the [ImageBrowser] folder. If you cannot drag and drop the file from the [Email Images] folder, look for it in the [ImageBrowser.mail] folder and attach it to your message.



# Merging Panoramic Images with PhotoStitch

## To Merge Images Registered in ImageBrowser

- You can merge a series of overlapping images into a single, seamless panorama.
- Select the images in the browser area, choose the [Edit] menu and select [PhotoStitch]. The PhotoStitch program will start.
- Follow the instructions in the guidance window to merge the images.
- Please refer to the PhotoStitch Help file for more details.

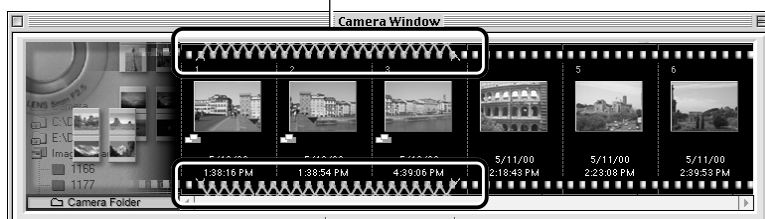


Follow the instructions to merge the images.

## Images Shot in Stitch Assist Mode

- PhotoStitch automatically arranges images shot with the Stitch Assist mode of Canon digital cameras in the correct order and orientation, making it easy to merge these images. Stitch Assist mode images display in the Camera Window as shown below.

Stitch Assist mode images have a green stitch mark. Click the stitch mark to start PhotoStitch and merge them.



Please see the *Camera User Guide* for instructions for shooting in Stitch Assist mode.



## Editing and Applying Special Effects to Images

### Adobe Photoshop LE

1. Confirm that Adobe Photoshop LE has been installed.
2. Select an image from the Browser Window of ImageBrowser.
3. Click the [Edit] menu and select [Adobe Photoshop].  
Please refer to the Adobe Photoshop LE Help file and electronic guide (User Guide.pdf) for instructions for this program.
4. Edit and apply special effects to the image.
  - ImageBrowser supports the BMP, JPEG, PICT and TIFF file formats.
  - Click the [Display] menu and select [Refresh] to update the folder data.

### Adobe PhotoDeluxe

1. Confirm that Adobe PhotoDeluxe has been installed.
2. Select an image from the Browser Window of ImageBrowser.
3. Click the [Edit] menu and select [Adobe PhotoDeluxe].  
Please refer to the Adobe PhotoDeluxe Help file and electronic guide (Getstart.pdf) for instructions for this program.
4. Edit and apply special effects to the image.
  - Once you have finished editing the image, click the [File] menu, select [Send to] and [File Format] and save the image.
  - ImageBrowser supports the BMP, JPEG, PICT and TIFF file formats.
  - Click the [Display] menu and select [Refresh] to update the folder data.



## Shooting with RemoteCapture

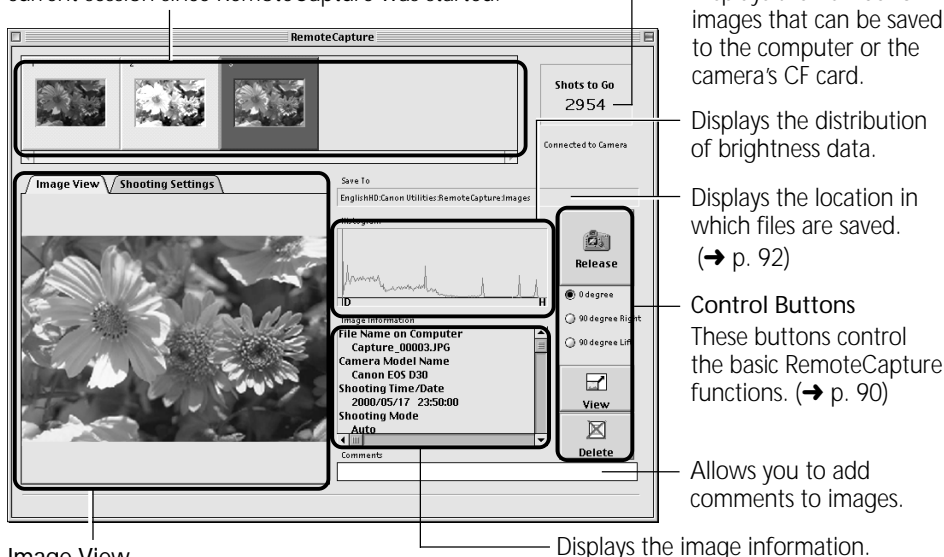
RemoteCapture will start if you click the ImageBrowser [Edit] menu and select [RemoteCapture] when the camera is connected to the computer via a USB port. RemoteCapture lets you activate the camera's shutter button remotely from the computer. The captured image is automatically saved into the currently selected ImageBrowser folder.

- RemoteCapture can only shoot still images.
- If an EOS D30 camera is connected via a USB port, clicking the shutter button on the camera also downloads the image directly to the computer.

### RemoteCapture Window

#### Thumbnail View

Displays thumbnails of all the images shot in the current session since RemoteCapture was started.



#### Image View

Displays the image selected in the Thumbnail View.

### How to Start RemoteCapture Instead of Displaying the Camera Window

The settings can be changed so that ImageBrowser automatically starts RemoteCapture instead of its Camera Window when the camera is connected to the computer's USB port.

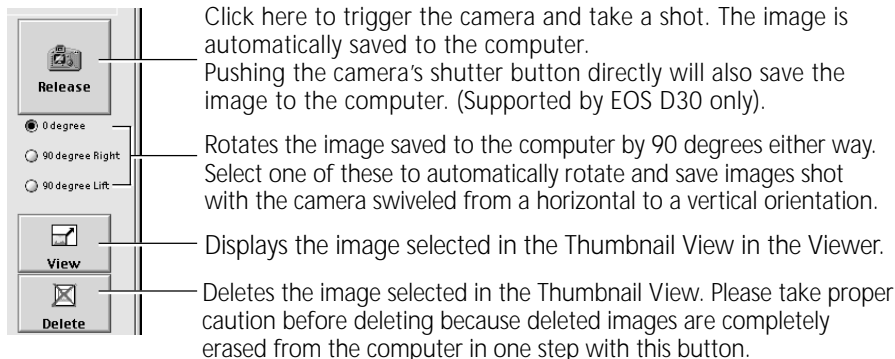
- (1) Click the ImageBrowser [Edit] menu and select [Preferences].
- (2) In the Preferences dialog, click the [Camera] tab and set [Camera Controls for USB Connection] to [Start RemoteCapture].

The RemoteCapture window will now show instead of the ImageBrowser Camera Window when the camera is connected to the USB port and starts ImageBrowser.



## About the RemoteCapture Control Buttons

The control buttons are used to shoot, delete and display images.



## Using Interval and Timer Shooting

RemoteCapture can be used to shoot a set number of images at specified intervals (Interval Shooting) or to shoot an image after a specified delay (Timer Shooting).

### Interval Shooting

You can set the number of frames and the interval at which they are shot.

1. Click the [File] menu and select [Interval Shooting].  
The Interval Shooting dialog will display.
2. Set the number of frames and interval value and click [Start].  
RemoteCapture will start interval shooting, capturing the specified number of images at the specified intervals.

### Timer Shooting

You can set the time delay before an image is shot.

1. Click the [File] menu and select [Timer Shooting].  
The Timer Shooting dialog will display.
2. Set the number of seconds and click [Start].  
RemoteCapture will start timer shooting, capturing an image after the specified delay.

## Printing a Thumbnail Index Sheet

Thumbnails you select in the Thumbnail View can be printed in order on a single index sheet by clicking the [File] menu and selecting [Print Index]. Since the file name and shooting date and time can be printed with each image, index sheets serve as a convenient record of and reference for your images.



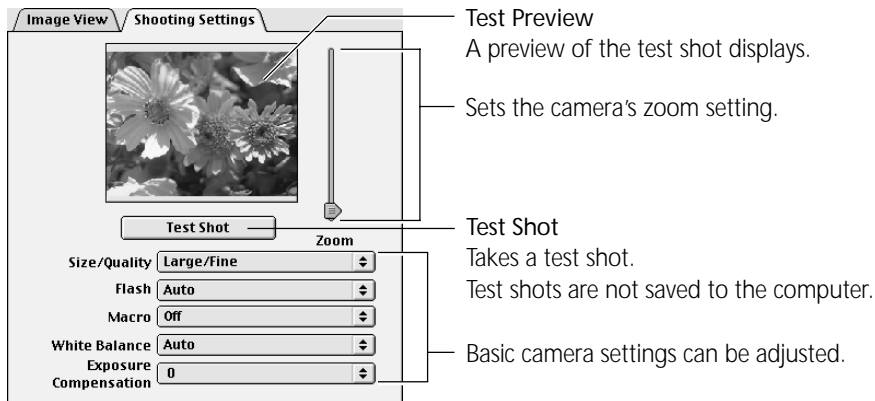
## Precautions when Shooting with RemoteCapture

- If your computer is set to go into sleep mode, there is no guarantee that RemoteCapture will continue to function after the computer has entered sleep mode. Always turn off the sleep function before you start shooting with RemoteCapture.
- The camera's auto power save setting is disabled while connected to RemoteCapture, and the power remains on until manually turned off. You are recommended to power the camera with a household power source while it is connected.
- Please note that the camera will not be able to shoot at the specified interval if it is shorter than the time required to send the image and save it on the computer.
- If the camera is set for "mirror lockup" shooting, the shutter will activate approximately two seconds after the release button is clicked in RemoteCapture. (Supported by the EOS D30 only)

## Setting Basic Shooting Settings in RemoteCapture

The camera's shooting settings can be adjusted by clicking the [Shooting Settings] tab in the RemoteCapture window.

Please adjust the shooting settings for the EOS D30 on the camera itself.



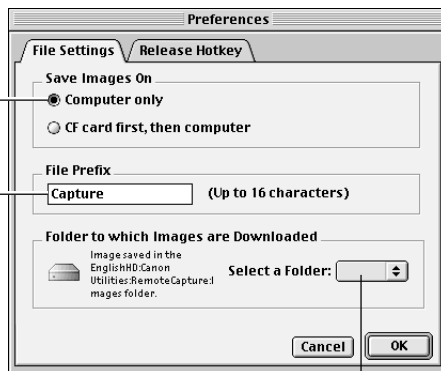


## Changing the Save Location and Other Preferences

The Preferences dialog can be opened by clicking the RemoteCapture [File] menu and selecting [Preferences]. This dialog can be used to change the save location and settings.

Selects whether the image is saved only on the computer or on the camera's CF card too.

Sets the image file prefix. If the prefix is set to [Capture], for example, the first image will be named [Capture\_00001.jpg] and successive images will have higher numbers.



Sets the folder in which the image file is saved.



## Converting RAW Images

The RAW format records the image data as captured by the camera's image sensor without further processing by the camera. Although the data is compressed when recorded, the original data can be completely restored without any loss of quality, making it possible to obtain high-quality images. Moreover, the RAW image file format is extremely compact, creating files that are approximately one-third to one-quarter the size of an uncompressed file (RGB TIFF). Please refer to your *Camera User Guide* to learn how to set the camera to shoot in the RAW format.

The process of obtaining high-quality RGB signals from RAW format images (hereafter RAW images) is called "conversion." Since ImageBrowser can be used to adjust the attributes of the original data, you can achieve the effects you wish while maintaining high image quality. In contrast, image data recorded in the RGB TIFF and other standard uncompressed file formats is irrevocably processed in the camera and must be further processed irrevocably by retouching software to change the attributes, which reduces the image quality.

Please note that ImageBrowser or the Plug-In Module are required to load RAW images onto a computer.

### Converting RAW Images without Adjusting the Quality

1. Select a RAW image.

Select a RAW image from the Browser Window of ImageBrowser.

2. Click the [File] menu and select [Convert RAW Images].

The image is converted and saved in a new TIFF (8 bits/channel) file. To learn how to change the file format, please see "How to Change the File Format" (→ p. 94).

### Converting RAW Images with Quality Adjustment

1. Select a RAW image from the Browser Window of ImageBrowser.

2. Click the [File] menu and select [Convert RAW Images with User Defined Parameters].

The RAW Image Parameter Settings dialog will display.

3. Select the quality settings and click [OK].

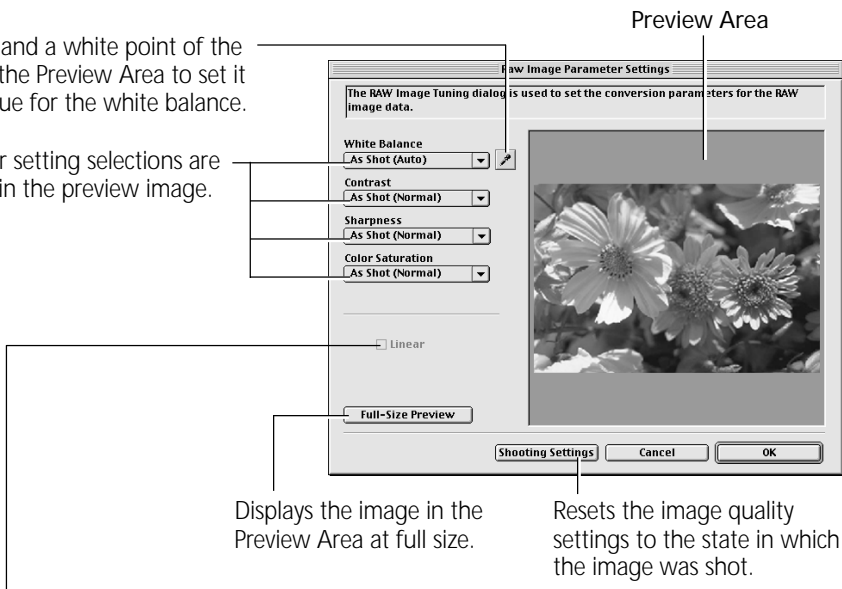
The RAW image is converted according to the specified parameters and saved in a new TIFF (8 bits / channel) file. If multiple RAW images are selected, the parameters are applied only to the first image. When only one RAW image is adjusted, the changes are also reflected in the remaining images in the selection. To learn how to change the file format, please see "How to Change the File Format" (→ p. 94).



## RAW Image Parameter Settings Dialog

Click this and a white point of the image in the Preview Area to set it as the value for the white balance.

Parameter setting selections are reflected in the preview image.



Placing a check here applies linear processing to the contrast, sharpness and color saturation.

- The [Linear] option is only enabled when [TIFF 16 bits/channel] is selected as the file format.

### Precautions when Selecting and Adjusting the Attributes of Multiple RAW Images

Ensure that all images included in a multiple selection of RAW images are from the same camera before attempting to adjust the image attributes. The white balance will not adjust properly if images from different cameras are mixed and the [Manual] white balance option is selected in the RAW Image Parameter Settings dialog or if a white portion of the image is selected in the preview area.

### How to Change the File Format

1. Click the ImageBrowser [Edit] menu and select [Preferences].  
The Preferences dialog will display.
2. Change the format selected in the [File Format] tab and click [OK].

### Saving in the TIFF 16 Bits / Channel Format

When [TIFF 16 bits/channel] (supported by the EOS D30 only) is selected as the file format for saving RAW images, 16 bits of data is used to record each RGB channel. This image format can be used in several application programs, such as Adobe Photoshop LE. Formats other than TIFF 16 bits/channel all save the image using 8 bits per RGB channel.



# Loading Images with Plug-In Compliant Application Programs

This section explains how to load images with Plug-In compliant application programs using Adobe Photoshop LE or Adobe PhotoDeluxe. Please refer to the manual for each application program for more details.

## Using Adobe Photoshop LE

### Installing the Software

#### Installing Plug-In Module

This program is required to load camera images into Plug-In compliant application programs. For instructions, see "Installing / Uninstalling the Software" (→ p. 69).

#### Installing Adobe Photoshop LE

Place the Adobe Photoshop LE CD-ROM in the drive and double-click the CD-ROM icon, the [Adobe Photoshop LE] folder and the [Install Photoshop LE] icon. Follow the on-screen instructions to continue with the installation.

You must input the software serial number to install Adobe Photoshop LE. It can be found on the CD-ROM case.

### Copying Plug-In Module to the [Plug-Ins] Folder

1. Open the [Canon Utilities] and [Digital Camera Plug-In] folders.
2. Copy the [Canon Digital Camera] file to the Adobe Photoshop LE [Import / Export] folder.  
Open the [Adobe Photoshop LE], [Plug-Ins] and [Import / Export] folders and copy the [Canon Digital Camera] file into the [Import / Export] folder.

### Starting Adobe Photoshop LE

#### Connecting the Camera to a USB Port

1. Connect the camera to the computer's USB port.

Refer to *Where to Find Instructions for Attaching Your Camera to a Computer* (→ p. ii) for connection instructions.

2. Set the camera to the mode for communicating with a computer.  
Although ImageBrowser will automatically start after a moment, you need to close it at this point.
  - See page 72 to learn how to set ImageBrowser so that it does not start automatically.
3. Start Adobe Photoshop LE.




## What to Do if the “ImageBrowser not found” Dialog Appears

If you install only the Canon Digital Camera Plug-In Module without ImageBrowser, the “ImageBrowser not found” dialog may display. If this happens, use the following procedures to prevent ImageBrowser from attempting to start automatically.

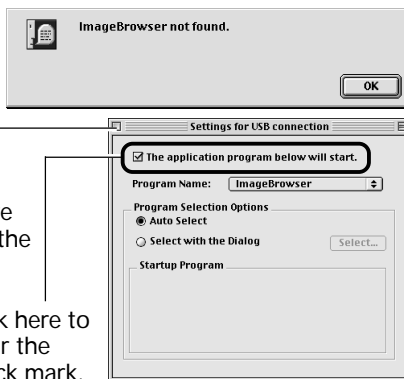
1. Click the [OK] button on the “ImageBrowser not found” dialog.
2. In the “Settings for USB connection” dialog, click the [The application program below will start.] option to clear the check mark.
3. Close the “Settings for USB connection” dialog.

This will prevent the “ImageBrowser not found” dialog from appearing again when the camera is connected.

- The “Settings for USB connection” dialog can be opened by choosing the Apple menu  and selecting [Control Panels] and [Canon USB Camera]. (→ p. 72)

Click here to close the dialog.

Click here to clear the check mark.



## Connecting via a CF Card Reader or PC Card Slot


1. Place the CF card into the CF card reader or into the PC card adapter and then into the PC card slot.

Refer to *Where to Find Instructions for Attaching Your Camera to a Computer* (→ p. ii) for connection instructions.

2. Start Adobe Photoshop LE.

## Serial Interface

### About AppleTalk

When connected to the printer or modem port via AppleTalk, choose the Apple menu , select [Chooser] and set AppleTalk to [Inactive].

1. Connect the camera to the computer with the serial cable.

Refer to *Where to Find Instructions for Attaching Your Camera to a Computer* (→ p. ii) for connection instructions.


2. Set the camera to the mode for communicating with a computer.
3. Start Adobe Photoshop LE.



## Starting Plug-In Module and Loading Images

Plug-In Module can display still images only. Please start ImageBrowser to download movies to the computer.

### Downloading Images from the Camera

1. Click the Adobe Photoshop LE [File] menu and select [Import] and [Canon Digital Camera].  
Plug-In Module will Start.
2. Click the  icon and set the communication settings.
  - USB Interface ... Confirm that [USB Port] and your camera model have been selected and click the [Set] button.
  - Serial Interface . Select the port and baud rate settings and click the [Set] button (→ p. 107).
3. Click the [Camera] button.  
The images from the camera will display in the Thumbnail Display Area.
4. Select the images you wish to download and click the [Acquire] button.  
The images will appear in the Adobe Photoshop LE window.
5. Click the [Quit] button to close Plug-In Module.  
To save the loaded images, click the Adobe Photoshop [File] menu and select [Save]. Input a file name and change the file location and format settings if necessary.

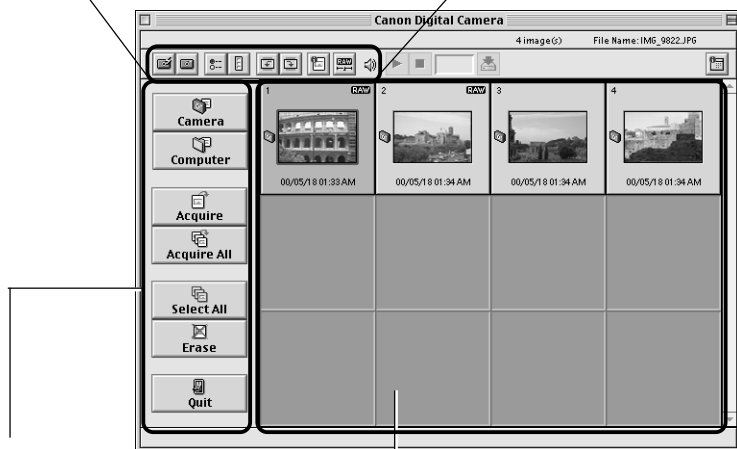
### Downloading Images Directly from a CF Card

1. Click the Adobe Photoshop LE [File] menu and select [Import] and [Canon Digital Camera].  
Plug-In Module will start.
2. Click the [Computer] button.
3. Select the folder containing the images and click [Select].  
The images on the CF card will appear in the Thumbnail Display Area.
4. Select the images you wish to download and click the [Acquire] button.  
The images will appear in the Adobe Photoshop LE window.
5. Click the [Quit] button to close Plug-In Module.  
To save the loaded images, click the Adobe Photoshop LE [File] menu and select [Save As]. Input a file name and change the file location and format settings if necessary.



## Guide to the Plug-In Module Window

- Preferences Button**  
Displays and changes the image transmission settings. (→ p. 106)
- Camera Settings Button**  
Use to display and change the camera settings. (→ p. 74)
- Communication Settings Button**  
Sets the settings for communicating with the camera.
- Display Style Button**  
Changes the shape of the thumbnail display area.
- Rotate 90 Degrees Buttons**  
Rotates selected image left or right 90 degrees.
- Image Information Button**  
Displays image details
- RAW Button**  
Adjusts the quality at which RAW images are converted. (→ p. 105)



**Main Buttons**  
Use them to perform the main commands such as acquiring images and closing the program.

**Thumbnail Display Area**  
Thumbnails of the camera's images display here when it is connected.



# Using Adobe PhotoDeluxe

## Installing the Software

### Installing Plug-In Module

This program is required to load camera images into Plug-In compliant application programs. For instructions, see "Installing/Uninstalling the Software" (→ p. 69).

### Installing Adobe PhotoDeluxe

For installation instructions, please see the electronic guide (Getting Started.pdf) contained in the [Open Me First!] folder on the Adobe PhotoDeluxe CD-ROM.

**The serial number shown during installation will be required for the user registration process.**

## Copying Plug-In Module to the [Plug-Ins] Folder

1. Open the [Canon Utilities] and [Digital Camera Plug-In] folders.
2. Copy the [Canon Digital Camera] file to the Adobe PhotoDeluxe [Import / Export] folder.

## Starting Adobe PhotoDeluxe

### Connecting the Camera to a USB Port

1. Connect the camera to the computer's USB port.

Refer to *Where to Find Instructions for Attaching Your Camera to a Computer* (→ p. ii) for connection instructions.

2. Set the camera to the mode for communicating with a computer.  
Although ImageBrowser will automatically start after a moment, you need to close it at this point.
  - See page 72 to learn how to set ImageBrowser so that it does not start automatically.
3. Start Adobe PhotoDeluxe.




## What to Do if the “ImageBrowser not found” Dialog Appears

If you install only the Canon Digital Camera Plug-In Module without ImageBrowser, the “ImageBrowser not found” dialog may display. If this happens, use the following procedures to prevent ImageBrowser from attempting to start automatically.

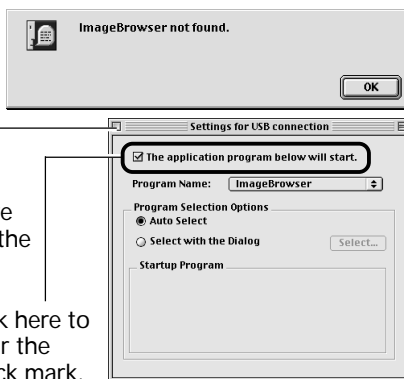
1. Click the [OK] button on the “ImageBrowser not found” dialog.
2. In the “Settings for USB connection” dialog, click the [The application program below will start.] option to clear the check mark.
3. Close the “Settings for USB connection” dialog.

This will prevent the “ImageBrowser not found” dialog from appearing again when the camera is connected.

- The “Settings for USB connection” dialog can be opened by choosing the Apple menu  and selecting [Control Panels] and [Canon USB Camera]. (→ p. 72)

Click here to close the dialog.

Click here to clear the check mark.



## Connecting via a CF Card Reader or PC Card Slot

1. Place the CF card into the CF card reader or into the PC card adapter and then into the PC card slot.

Refer to *Where to Find Instructions for Attaching Your Camera to a Computer* (→ p. ii) for connection instructions.

2. Start Adobe PhotoDeluxe.

## Serial Interface

### About AppleTalk

When connected to the printer or modem port via AppleTalk, choose the Apple menu , select [Chooser] and set AppleTalk to [Inactive].

1. Connect the camera to the computer with the serial cable.

Refer to *Where to Find Instructions for Attaching Your Camera to a Computer* (→ p. ii) for connection instructions.

2. Set the camera to the mode for communicating with a computer.
3. Start Adobe PhotoDeluxe.




## Starting Plug-In Module and Loading Images

Plug-In Module can display still images only. Please start ImageBrowser to download movies to the computer.

1. Click the [Get Photo] button at the upper left of the window.
2. Click [Get Photo] from the tab that displays and select [Cameras].
3. In the Select Input Source dialog, select [Canon Digital Camera] and click the [OK] button.  
This step is not required after the first time.
4. Click the [Camera] icon.  
The Plug-In Module will start.

### Downloading Images from the Camera

1. Click the  icon and set the communication settings.  
This step is only required for connections via the USB or serial ports.
  - USB Interface ... Confirm that [USB Port] and your camera model have been selected and click the [Set] button.
  - Serial Interface . Select the port and baud rate settings and click the [Set] button (→ p. 107).
2. Click the [Camera] button.  
The images from the camera will display in the Thumbnail Display Area.
3. Select the images you wish to download and click the [Acquire] button.
4. Input the file name in “untitled” box and click the [Save] button.  
The thumbnail will appear in the [My Photo] window at the lower right of the Adobe PhotoDeluxe window.
5. Click the [Quit] button to close Plug-In Module.  
To save the loaded images, click the Adobe PhotoDeluxe [File] menu and select [Save As]. Input a file name and change the file location and format settings if necessary.

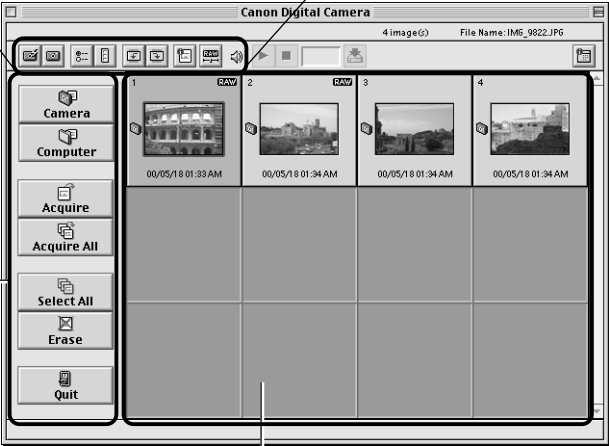
### Downloading Images Directly from a CF Card

1. Click the [Computer] button.  
The dialog will display.
2. Select the folder containing the images and click [Select].  
The images on the CF card will appear in the Thumbnail Display Area.
3. Download images using steps 3 to 5 of “Downloading images from the Camera”.



# Guide to the Plug-In Module Window

- Preferences Button**  
Displays and changes the image transmission settings. (→ p. 106)
- Camera Settings Button**  
Use to display and change the camera settings. (→ p. 74)
- Communication Settings Button**  
Sets the settings for communicating with the camera.
- Display Style Button**  
Changes the shape of the thumbnail display area.
- Rotate 90 Degrees Buttons**  
Rotates selected image left or right 90 degrees.
- Image Information Button**  
Displays image details
- RAW Button**  
Adjusts the quality at which RAW images are converted. (→ p. 105)



- Main Buttons**  
Use them to perform the main commands such as acquiring images and closing the program.
- Thumbnail Display Area**  
Thumbnails of the camera's images display here when it is connected.



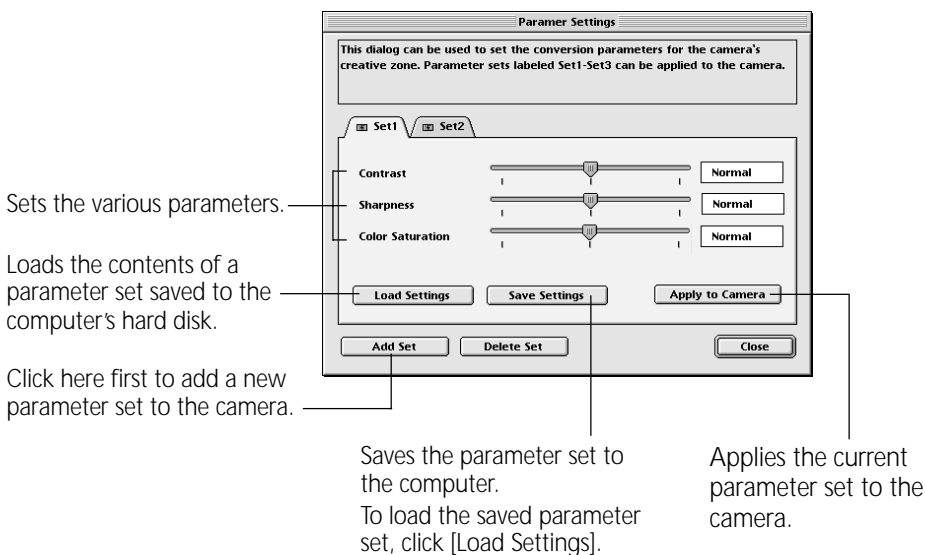
## Setting the Parameters (EOS D30 Only)

Up to three sets of parameters for loading images can be set in the Plug-In Module using the Parameter Settings dialog in addition to the parameters already set on the camera.

Please see the Camera User's Guide to learn how to select the parameters for the camera that are set with the computer.

1. Click the [Camera Settings] button in the Plug-In Module window.  
The Camera Settings dialog will display.
2. Click the [Parameters] button.  
The Parameter Settings dialog will display.
3. Click [Add Set].  
Click [Add Set] and select the number of the set you wish to add.
4. Set each parameter.
5. Click [Apply to Camera].  
The settings will be applied to the camera.

### Parameter Settings Dialog





## Converting RAW Images

The RAW format records the image data as captured by the camera's image sensor without further processing by the camera. Although the data is compressed when recorded, the original data can be completely restored without any loss of quality, making it possible to obtain high-quality images. Moreover, the RAW image file format is extremely compact, creating files that are approximately one-third to one-quarter the size of an uncompressed file (RGB TIFF). Please refer to your Camera User Guide to learn how to set the camera to shoot in the RAW format.

The process of obtaining high-quality RGB signals from RAW format images (hereafter RAW images) is called "conversion." Since the Plug-In Module can be used to adjust the attributes of the original data, you can achieve the effects you wish while maintaining high image quality. In contrast, image data recorded in the RGB TIFF and other standard uncompressed file formats is irrevocably processed in the camera and must be further processed irrevocably by retouching software to change the attributes, which reduces the image quality.

Please note that ImageBrowser or the Plug-In Module are required to load RAW images onto a computer.

### Converting RAW Images without Adjusting the Quality

**1. Select a RAW image.**

Select a RAW image from the Thumbnail Display Area of the Plug-In Module.

**2. Click the [Acquire] button.**

The image will be converted and sent to Adobe Photoshop or Adobe PhotoDeluxe at 8 bits per RGB.

To learn how to change the file transmission format, please see "How to Change the File Transmission Format" (→ p. 106).



## Converting RAW Images with Quality Adjustment

1. Select a RAW image.

Select a RAW image from the Thumbnail Display Area of the Plug-In Module.

2. Click the Plug-In Module [RAW] button.

The RAW Image Parameter Settings dialog will display.

3. Select the quality settings and click [OK].

When an image is adjusted, the "RAW" symbol shown on its thumbnail will change from white to green. If multiple RAW images are selected, the parameters are applied only to the first image. When only one RAW image is adjusted, the changes are also reflected in the remaining images in the selection.

4. Click the [Acquire] button.

The RAW image will be converted according to the specified parameters and the data will be sent to Adobe Photoshop LE or Adobe PhotoDeluxe at 8 bits per RGB channel.

To learn how to change the file transmission format, please see "How to Change the File Transmission Format" on the next page.

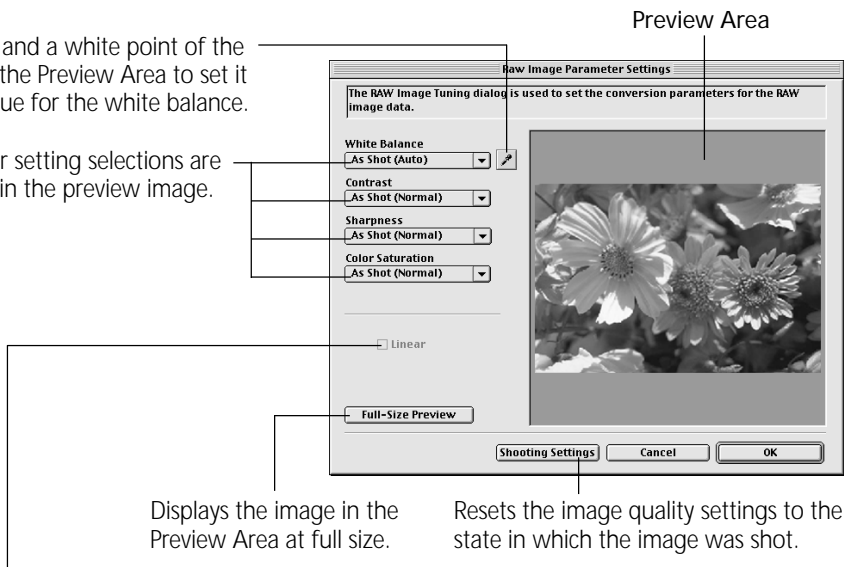
- The image quality settings return to the default settings when the Plug-In Module is closed. The settings will also be reset to the defaults if the connection to the camera is broken, or if the Plug-In Module window is refreshed as a result of an image being shot or deleted with the camera while it is connected.



## RAW Image Parameter Settings Dialog

Click this and a white point of the image in the Preview Area to set it as the value for the white balance.

Parameter setting selections are reflected in the preview image.



Displays the image in the Preview Area at full size.

Resets the image quality settings to the state in which the image was shot.

Placing a check here applies linear processing to the contrast, sharpness and color saturation.

- The [Linear] option is only enabled when [TIFF 16 bits/channel] is selected as the file format.

### Precautions when Selecting and Adjusting the Attributes of Multiple RAW Images

Ensure that all images included in a multiple selection of RAW images are from the same camera before attempting to adjust the image attributes. The white balance will not adjust properly if images from different cameras are mixed and the [Manual] white balance option is selected in the RAW Image Parameter Settings dialog or if a white portion of the image is selected in the preview area.

### How to Change the File Transmission Format

1. Click the [Preferences] button in the Plug-In Module window.  
The Preferences dialog will display.
2. Change the transmission format in the [Send RAW image data to the application as] option and click [OK].

### Transmitting in the TIFF 16 Bits / Channel Format

When [16 bits per color channel] (supported by the EOS D30 only) is selected as the transmission option for RAW images, images can be transmitted to the application at 16 bits per RGB channel. Although colors are expressed more vividly with the 16-bit setting than the 8-bit setting, the file size increases dramatically. Moreover, some image editing applications function only partially with files of this format or cannot open them at all.



# Troubleshooting the Computer Connection

## Double-Check:

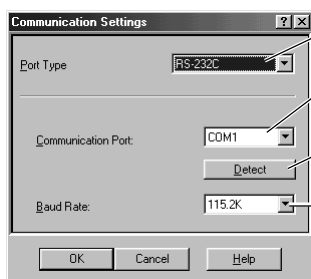
1. Is the cable between the camera and computer correctly attached?
  - Refer to *Where to Find Instructions for Attaching Your Camera to a Computer* (→ p. ii) for connection instructions.
2. Is the camera' power on?
3. Is the battery charge sufficient?

We suggest that you use the AC adapter to power a camera connected to a computer.

If the above conditions are met, check the following items.

- Have you tried switching the cable to a different port?  
If there is more than one port, try switching the cable to another port.
- Are the communication settings appropriate?  
If the settings for the port to which the camera is connected are incorrect, the Communication Settings dialog will display.

## Windows Platform



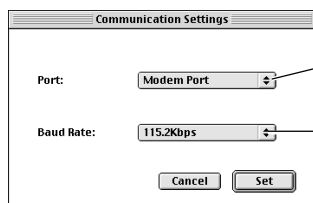
Select [USB] or [RS-232C].

Select the port to which the interface cable is connected.

If you are unsure to which serial port you are connected, click the [Detect] button.


Normally you should not need to change this setting, but set it to a lower speed if you try everything else and still cannot load images.

## Macintosh Platform



Select the port to which the interface cable is connected.

Normally you should not need to change this setting, but set it to a lower speed if you try everything else and still cannot load images.

- If you are using LocalTalk, has AppleTalk been set to Off?  
When connected to a serial port (printer or modem port) via AppleTalk, choose the Apple menu , select [Chooser] and set AppleTalk to the [Inactive] option.

If these remedies do not work, please contact the nearest Canon Customer Support Help Desk.



# Customer Support

## Canon Customer Support

### Canon Inc.

30-2 Shimomaruko 3-chome, Ohta-ku, Tokyo  
146-8501, Japan

### NORTH AMERICA

#### Canon U.S.A., Inc.

Canon Customer Care Center  
Phone (US): 1-800-828-4040  
(Available Mon. - Fri., 9 AM to 8 PM Eastern Time)

#### Canon Canada Inc.

Phone (Canada): 1-800-OK-CANON (1-800-652-2666)  
(24 hours/day, 7 days/week)

### EUROPE

#### Europe, Africa & Middle East

##### Canon Europa N.V.

PO Box 2262, 1180 EG Amstelveen, The Netherlands

##### Canon (UK) Ltd.

Helpdesk

Tel No.: 08705 143 723 (Calls may be recorded.)

Fax No.: 08705 143 340

##### Canon France S.A.

Hotline : 01.41.99.70.70

Tél : 01.41.99.77.77 Télécopie : 01.41.99.79.51

##### Canon Photo Vidéo France S.A.

Support Client: 01.41.30.15.18

Fax: 01.41.30.15.98

##### Canon Deutschland GmbH

Canon Hotline Service:

Customer Support: (02151) 349-555

Info Desk: (02151) 349-566

Fax: (02151) 349-588

##### Canon Euro-Photo GmbH

Customer-Support: (02154) 495-482 or 483

Fax: (02154) 495-489

##### Canon Italia S.p.A.

Pronto Canon : 02 8249 2000

##### Canon Belgium N.V. / S.A.

Helpdesk: 0900-10627

Tel.: (02) 722.04.11 Fax: (02) 721.32.74

##### Canon Luxembourg S.A.

Tel.: (352) 48 47 961 Fax: (352) 48 47 96232

##### Canon Nederland N.V.

Helpdesk: 023 - 5 681 681

Tel.: 023 - 5 670 123 Fax: 023 - 5 670 124

##### Canon Danmark A/S

Phone: +45 44882400

e-mail: helpdesk@canon.dk

##### Canon España S.A.

Help Desk: 906 301 255

Fax: (91) 411 76 65

E-mail: helpdesk1@btlink.net

### Canon Norge as

Tlf. 22 62 93 21 Faks: 22 62 06 15

E-mail: helpdesk@canon.no

### Finland

#### Canon OY

Puhelin: 010 54420 Fax: 010 544 4571

Help Desk: 0600 0 22606 (14,80 mk/min+pvm)

Help Desk: 0600 0 22666 (enint. 40mk/puhelu+pvm)

Sähköposti: helpdesk@canon.fi

#### Canon (Schweiz) AG

Tel. 01-835-6161, Fax 01-835-6526

Hotline 0900 57 55 20

#### Canon Svenska AB

Tel: 08-744 85 00 Fax: 08-744 64 65

### Austria

#### Canon GmbH

Oberlaaerstraße 233 A-1100 Vienna

Tel: 01 680 88-0 Fax: 01 680 88-308

### OCEANIA

#### Canon Australia Pty. Ltd.

Info-Line: (02) 9805 2864

#### Canon New Zealand Ltd.

Info-Line: 0900-522666

### ASIA

#### Canon Singapore Pte. Ltd.

79 Anson Road, #09-01 / 06, Singapore 079906

Phone: (65) 532 4400 Fax: (65) 221 7577

#### Canon Hongkong Co., Ltd.

9/F, The Hong Kong Club Building, 3A Chater Road,  
Central, Hong Kong

Phone: 852-2739-0802 Fax: 852-2369-7701

#### Canon Marketing Services

No.1 Jalan Kilang Timor, #09-00, Pacific Tech Centre,  
Singapore 159303

Phone: (65) 799 8888 Fax: (65) 273 3317

#### Canon Marketing (Malaysia) Sdn. Bhd.

Wisma General Lumber, Block D, Peremba Square,  
Saujana Resort, Section U2, 40150,

Shah Alam, Selangor Darul Ehsan, Malaysia

Phone: (60) 3 744 6000, (60) 3 745 0055

Fax: (60) 3 745 0505

#### Canon Marketing (Thailand) Co., Ltd.

10th Floor, Bangkok City Tower,

179/34-45 South Sathorn Road,

Bangkok 10120, Thailand

Phone: (662) 344 9999 Fax: (662) 344 9910

#### Canon Marketing (Hongkong) Co., Ltd.

10/F, Mirror Tower, 61 Mody Road, Tsimshatsui East

Kowloon HongKong

Phone: 852-2170-2828 Fax: 852-2723-9684



# Adobe Customer Support

Adobe Systems Inc. technical support information is available in the PDF file format on the supplied CD-ROM.

## PDF File Location and Opening Instructions

Place the Adobe Photoshop LE CD-ROM in the drive and double-click the [My Computer] icon on the Windows desktop, followed by the [Photosle] CD-ROM icon. The window will show folders with language names. Double-click the appropriate language folder and the [Support.pdf] file within it.

- \* To read PDF files, Adobe Acrobat Reader must already be installed on your computer. An installer for this program is on the Adobe Photoshop LE CD-ROM within each language folder in a folder labeled [Acroread].



