

EOS DIGITAL Camera Software




EOS Utility

Ver. 2.0



Instruction Manual

● Content of this Instruction Manual

- EU is used for EOS Utility.
- Camera model is displayed as an icon.
Example: EOS-1D Mark III → 1D Mk III
-  displays the relevant camera model.
- In this manual, the windows used in the examples are from Mac OS X 10.4.
- The selection sequence of pull-down menus is displayed in ► procedures.
(Example: Select the [Window] menu ► [Main Window].)
- Square brackets are used to indicate items such as menu names, button names and window names that appear on the computer screen.
- Text inside < > indicates a camera switch name or icon, or a keyboard key name.
- ** indicates a reference page.
Click to move to the relevant page.
-  : Marks information that should be read before use.
-  : Marks additional information you may find helpful.

● Switching Between Pages

- Click on arrows on the bottom right of the screen.
 - ▶ : next page
 - ◀ : previous page
 - ↺ : return to a page you had previously displayed
- Click on the chapter headings on the right side of the screen to switch to the contents page of that chapter. Also, click the item you want to read about on the table of contents to move to the relevant page.

Introduction

Contents at a Glance

Downloading Images

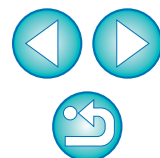
Camera Settings

Remote Shooting

Preferences

Reference

Index



READ CAREFULLY BEFORE USING!

CANON SOFTWARE LICENSE AGREEMENT

IMPORTANT - READ THIS AGREEMENT BEFORE USING THE SOFTWARE ON THE CD-ROM IN THIS BOX. BY USING THE SOFTWARE, YOU AGREE TO BE BOUND BY THE TERMS OF THIS AGREEMENT.

This is a license agreement (the [Agreement]) between you and Canon Inc. ([Canon]).

IF YOU DO NOT AGREE TO THE TERMS AND CONDITIONS OF THIS AGREEMENT, DO NOT USE THE SOFTWARE PROGRAM ON THE CD-ROM AND THE USER MANUAL IN THIS BOX (COLLECTIVELY, THE [SOFTWARE]) AND RETURN THE SOFTWARE WITHIN 30 DAYS FROM THE DATE OF PURCHASE TO YOUR POINT OF PURCHASE FOR A REFUND.

In consideration of the right to use the SOFTWARE, you agree to abide by the terms and conditions of this Agreement.

1. **LICENSE:** Canon grants you the non-exclusive right to use the SOFTWARE only on a single computer. You may physically transfer the SOFTWARE from one computer to another provided that the SOFTWARE is used on only one computer at a time. You shall not install or use the SOFTWARE on a network, multiple CPU, multiple site arrangement, or any other hardware configuration where the SOFTWARE is accessible to more than one CPU or to more than one user.

YOU SHALL NOT ASSIGN, SUBLICENSE, RENT, LEASE, LOAN, CONVEY OR OTHERWISE USE, TRANSFER, COPY, TRANSLATE, CONVERT TO ANOTHER PROGRAMMING LANGUAGE, ALTER, MODIFY, DECOMPILE OR DISASSEMBLE THE SOFTWARE, IN WHOLE OR IN PART, EXCEPT AS EXPRESSLY PROVIDED IN THIS AGREEMENT.

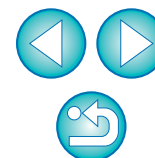
2. **BACK-UP COPY:** You may make one copy of the SOFTWARE solely for back-up purposes, or copy the SOFTWARE onto the permanent storage device (e.g. a hard disk) of your computer and retain the original for back-up purposes. Any other copying of the SOFTWARE is a violation of this Agreement. You must reproduce and include the copyright notice on the back-up copy.
3. **SUPPORT AND UPDATES:** Canon is not responsible for providing maintenance or support for use of the SOFTWARE. No updates, fixes or support will be made available for the SOFTWARE.
4. **LIMITED WARRANTY AND LIMITATION OF LIABILITY:** It is your responsibility to choose, maintain and match the hardware and software components of your computer system. Thus Canon does not guarantee uninterrupted service or correction of errors or that the functions or performance of the SOFTWARE will meet your requirements. THE SOFTWARE IS LICENSED ON AN [AS IS] BASIS AND WITHOUT WARRANTY OF ANY KIND. The CD-ROM storing the SOFTWARE is warranted only against defective material under normal use for a period of ninety (90) days after purchase from an authorized Canon dealer as evidenced by your sales receipt. Your sole remedy for a defective CD-ROM shall be replacement of the same without charge when returned by you at your expense to your point of purchase and proven to be defective upon inspection. The replacement CD-ROM will be warranted for the remainder of the original ninety (90) day warranty period of the defective CD-ROM. The limited warranty does not apply if the failure of the CD-ROM resulted from accident, abuse or misapplication of the SOFTWARE and shall not extend to anyone other than the original user of the SOFTWARE.

EXCEPT AS SPECIFICALLY SET FORTH IN THIS PARAGRAPH 4, CANON, CANON'S SUBSIDIARIES, DISTRIBUTORS AND DEALERS DISCLAIM ALL WARRANTIES, EXPRESS OR IMPLIED, INCLUDING ANY WARRANTY OF MERCHANTABILITY OR FITNESS FOR A PARTICULAR PURPOSE, WITH RESPECT TO THE SOFTWARE.

NEITHER CANON NOR ANY OF CANON'S SUBSIDIARIES, DISTRIBUTORS OR DEALERS IS LIABLE FOR ANY DAMAGES HOWSOEVER CAUSED, INCLUDING WITHOUT LIMITATION, DIRECT, CONSEQUENTIAL OR INCIDENTAL LOSS OR DAMAGE INCLUDING LOSS OF PROFITS, EXPENSE OR INCONVENIENCE HOWSOEVER CAUSED OR ARISING OUT OF THE SOFTWARE OR THE USE THEREOF.

NEITHER CANON, NOR ANY OF CANON'S SUBSIDIARIES, DISTRIBUTORS OR DEALERS SHALL HAVE ANY OBLIGATION TO INDEMNIFY YOU AGAINST ANY CLAIM OR SUIT BROUGHT BY A THIRD PARTY ALLEGING THAT THE SOFTWARE OR THE USE THEREOF INFRINGES ANY INTELLECTUAL PROPERTY OF SUCH THIRD PARTY.

5. **TERM:** This Agreement is effective upon your using the SOFTWARE and remains in effect until expiration of all copyright interests in the SOFTWARE unless earlier terminated. You may terminate this Agreement by destroying the SOFTWARE. This Agreement will also terminate without notice to you if you fail to comply with any of the terms of this Agreement and you must then promptly return the SOFTWARE. In addition, Canon may enforce its other legal rights.
6. **U.S. GOVERNMENT RESTRICTED RIGHTS NOTICE:** The SOFTWARE is provided with restricted rights. Use, duplication or disclosure is subject to restrictions as set forth in either subparagraph (c) (1) (ii) of the Rights in Technical Data and Computer software clause at DFARs 252.227-7013 or subparagraph (c) (1) and (2) of the Commercial Computer Software Restricted Rights Clause at FAR 52.227-19, as applicable.
7. **SEVERABILITY:** In the event that any provision of this Agreement is declared or found to be illegal by any court or tribunal of competent jurisdiction, such provision shall be null and void with respect to the jurisdiction of that court or tribunal and all the remaining provisions of this Agreement shall remain in full force and effect.
8. **CONTROLLING LAW:** The terms of this Agreement as it relates to purchases of the Software in the United States of America shall be governed and construed in all respects in accordance with the laws and regulations of the State of New York, without reference to choice of law principles. The terms of this Agreement as it relates to purchases of the Software in Canada shall be governed by the laws of the province of Ontario.
9. **OWNERSHIP:** All rights, including but not limited to copyrights and trade secret rights, to the SOFTWARE belong to Canon, its affiliated corporations and third party licensors. Your use of the SOFTWARE is subject to the United States, Canada and other applicable copyright and trademark laws and nothing in this Agreement constitutes a waiver of the rights of Canon, its affiliated corporations and third party licensors under such laws. Nothing contained in Paragraph 1 shall be construed to give Canon any ownership rights in any images, graphics or textual material that you save in connection with the Software.
10. **ACKNOWLEDGEMENT:** BY USING THE SOFTWARE, YOU ACKNOWLEDGE THAT YOU HAVE READ THIS AGREEMENT, UNDERSTOOD IT, AND AGREE TO BE BOUND BY ITS TERMS AND CONDITIONS. YOU ALSO AGREE THAT THIS AGREEMENT IS THE COMPLETE AND EXCLUSIVE STATEMENT OF AGREEMENT BETWEEN YOU AND CANON CONCERNING THE SUBJECT MATTER HEREOF AND SUPERSEDES ALL PROPOSALS OR PRIOR AGREEMENTS, VERBAL OR WRITTEN, AND ANY OTHER COMMUNICATIONS BETWEEN THE PARTIES RELATING TO THE SUBJECT MATTER HEREOF. NO AMENDMENT TO THIS AGREEMENT SHALL BE EFFECTIVE UNLESS SIGNED BY A DULY AUTHORIZED OFFICER OF CANON.

[Introduction](#)[Contents at a Glance](#)[Downloading Images](#)[Camera Settings](#)[Remote Shooting](#)[Preferences](#)[Reference](#)[Index](#)

EOS Utility (hereinafter EU) is software for communication with your EOS DIGITAL camera. By connecting the camera and computer with the cable provided with the camera, you can download to your computer images saved in the camera's memory card as well as set various camera settings or shoot remotely from EU on your computer.

Main Features of EU

From EU, you can control the camera remotely and perform the following main features.

- **Batch download to your computer images saved in the camera's memory card.**
 - You can also download to your computer only images you have selected.
- **Set various camera settings from your computer.**
- **Shoot remotely by controlling the camera from your computer.**
 - Remote Live View shooting – Shoot while checking your subject in real time on your computer.
 - You can also shoot remotely by operating the camera's shutter button.
 - Preset a time allowing the camera to shoot automatically with timer shooting.
- **When downloading images or shooting remotely, view/check images with the linked Digital Photo Professional.**

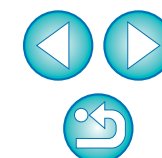
System Requirements

| | |
|------------------|---|
| OS | Mac OS X 10.3 to 10.4 |
| Computer | Macintosh with one of the above OS installed and a USB port as a standard feature |
| CPU | Minimum 400MHz, PowerPC G3, G4, G5, Intel processor* |
| RAM | Minimum 256MB |
| Interface | USB 1.1 to 2.0 Hi-Speed |
| Display | Resolution: 1024 × 768 or more Colors: Thousands or more |

* EU is a Universal application. However, when using EU on an Intel-based Macintosh, be sure your Mac OS version is updated to OS X 10.4.7 or later.

Supported Camera and Supported Images

| Supported camera | Supported images |
|------------------|---|
| EOS-1D Mark III | RAW and JPEG images shot with the camera on the left. |

[Introduction](#)[Contents at a Glance](#)[Downloading Images](#)[Camera Settings](#)[Remote Shooting](#)[Preferences](#)[Reference](#)[Index](#)



Contents at a Glance

Downloading images from your camera to a computer

- To batch download all the images to a computer → p.6
- To download to a computer selected images only → p.7
- To download images using a third-party card reader → p.9

Camera settings from a computer

- To set the camera owner name and date/time → p.11
- To set a Picture Style and apply to the camera → p.15
- To apply a Picture Style file to the camera → p.18
- To register a personal white balance in the camera → p.19
- To set a JPEG quality and apply to the camera → p.20
- To adjust a white balance setting and apply to the camera → p.20
- To set My Menu and apply to the camera → p.21

Remote shooting

- To shoot by controlling the camera from a computer (Remote Live View shooting) → p.25
- To shoot with accurate horizontal/vertical alignment → p.29
- To change the aspect ratio and shoot → p.30
- To shoot by operating the camera → p.30
- To shoot with the timer → p.31

Functions for use with other accessories sold separately

- To shoot with the Wireless File Transmitter WFT-E2/E2A and check the images in real time → p.39
- To start up the WFT-E2/E2A software from EU → p.40

Introduction

Contents at a Glance

Downloading Images

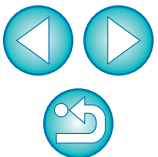
Camera Settings

Remote Shooting

Preferences

Reference

Index



1 Downloading Images to your Computer



Basic operation such as preparing for downloading images to your computer (connecting your camera and computer), starting up EU, downloading images from your camera to your computer and quitting EU are explained here.

| | |
|---|---|
| Preparing to Download Images | 5 |
| Connecting the Camera and Computer | 5 |
| Starting up EU | 5 |
| Batch Downloading Images to Your Computer | 6 |
| Downloading Selected Images to Your Computer | 7 |
| Downloading Images with a Card Reader | 9 |
| Downloading Images Using Digital Photo Professional | 9 |
| Downloading Images Using ImageBrowser | 9 |
| Downloading Images without Using Canon Software | 9 |
| Quitting EU | 9 |

Introduction

Contents at
a Glance

1
Downloading
Images

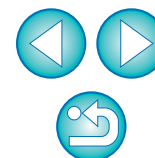
2
Camera
Settings

3
Remote
Shooting

4
Preferences

Reference

Index

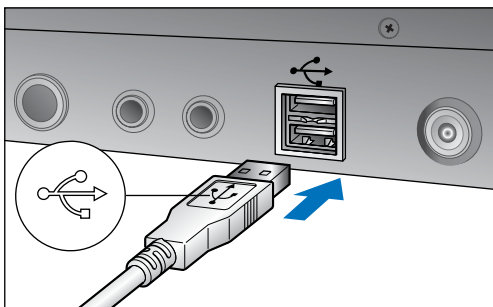


Preparing to Download Images

To download to your computer images shot with your camera, you will need to connect your camera and computer using the interface cable provided with your camera.

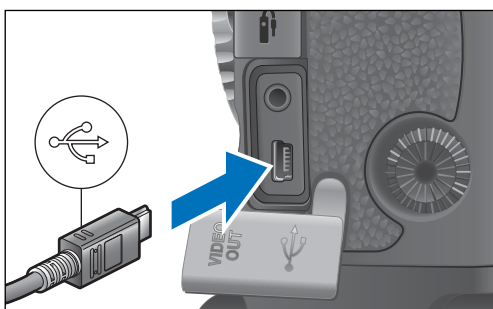
Connecting the Camera and Computer

- 1 Connect the large plug of the cable into the USB port of your computer.



- For the location and direction of the USB port, refer to the computer User's Manual.

- 2 Connect the small plug of the cable into the < USB symbol > terminal on your camera.

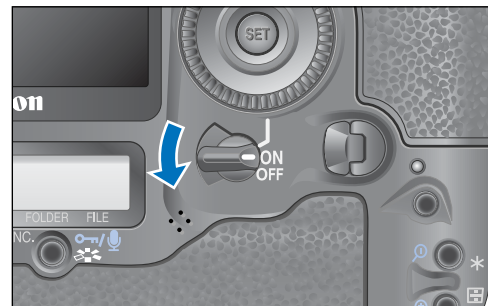


- Connect with the < USB symbol > mark on the plug facing the front of the camera.
- Image downloading preparation is now complete. Continue with "Starting up EU".
- For how to connect using the cable protector for preventing plug disconnection, refer to [p.24](#).

Starting up EU

When the camera's power switch is set to < ON >, EU will start up, and the camera and computer will be able to communicate.

- 1 Set the camera's power switch to < ON >.



- When the [Welcome to iPhoto!] dialog box appears, click the [Decide Later] button. If the iPhoto starts at this time, quit iPhoto.

Introduction

Contents at a Glance

Downloading Images

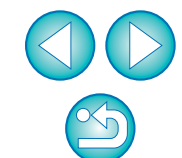
Camera Settings

Remote Shooting

Preferences

Reference

Index



2 Click the [EOS Utility] icon registered in the Dock.



EU Main window



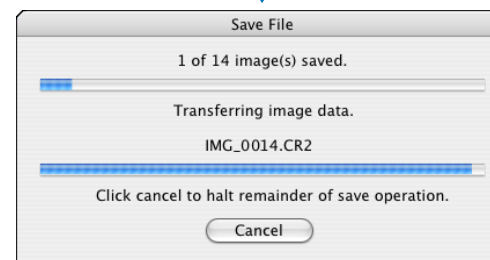
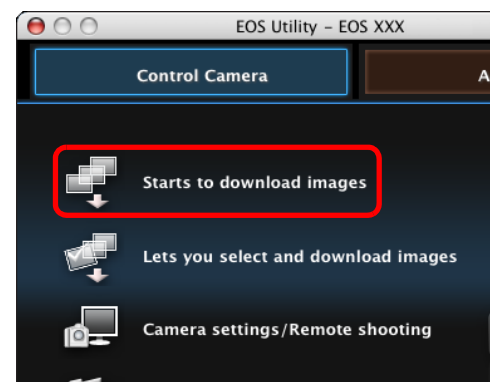
- EU starts up, the main window appears, and your camera and computer can now communicate. Continue with “Batch Downloading Images to Your Computer”.
- If you set the camera’s power switch to < ON >, EU may start up automatically depending on your computer system.

Batch Downloading Images to Your Computer

You can batch download to your computer all the images saved in your camera’s memory card.

The downloaded images are sorted by date into folders and are then displayed in the main window of Digital Photo Professional (RAW image viewing, processing and editing software) (hereinafter DPP), which is linked to start up automatically, where you can check them immediately.

1 Click [Starts to download images].



- The [Save File] dialog box appears and image downloading to your computer begins.
- The downloaded images are saved in the [Pictures] folder.
- When all images have been downloaded, DPP starts up automatically and the downloaded images are displayed in the main window.

Introduction

Contents at a Glance

Downloading Images

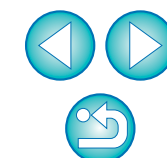
Camera Settings

Remote Shooting

Preferences

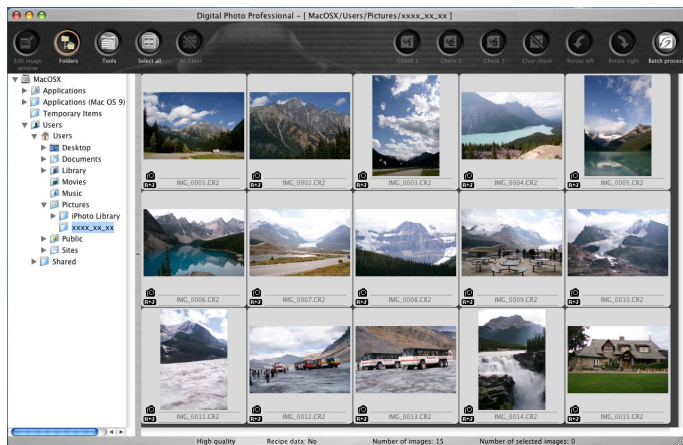
Reference

Index



2 Check the downloaded images.

DPP Main window



- Check the downloaded images in DPP.
For details on using DPP, refer to the “Digital Photo Professional Instruction Manual” (PDF electronic manual).
- Continue with “Quitting EU” (p.9).

Downloading Selected Images to Your Computer

From the images saved in your camera's memory card, you can select the ones you want and download them to your computer.

1 Click [Lets you select and download images].



→ A viewer window appears and the images in the memory card are displayed.



- When you download images, you can change the software that starts up from DPP to ImageBrowser or another software (p.35).
- You can change images downloaded and the save destination (p.34, p.35).

Introduction

Contents at a Glance

Downloading Images

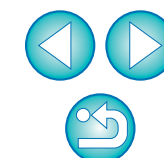
Camera Settings

Remote Shooting

Preferences

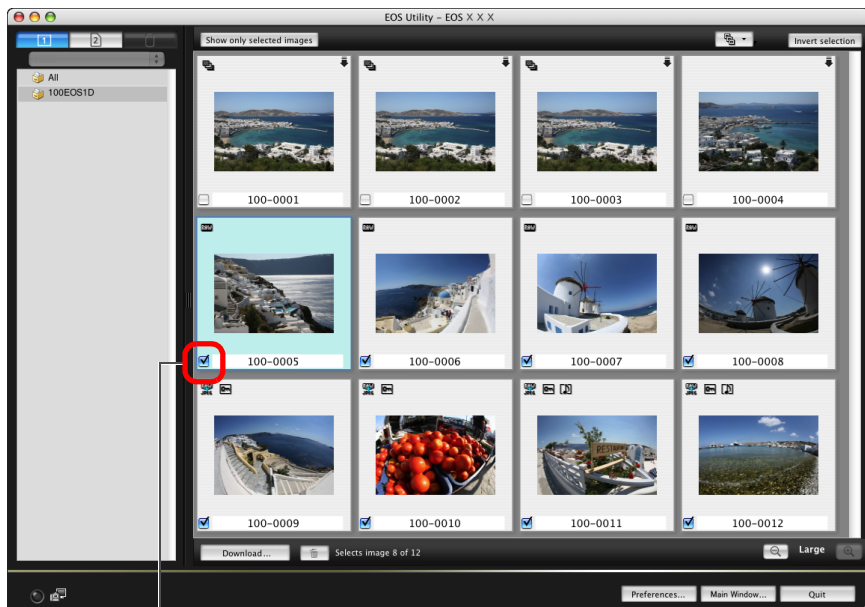
Reference

Index



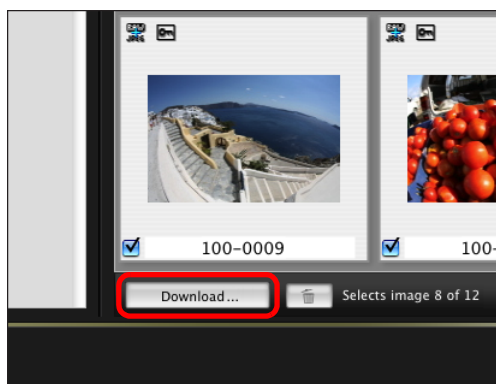
2 View the images and checkmark images to download.

Viewer window



Add checkmark

3 Click the [Download] button.

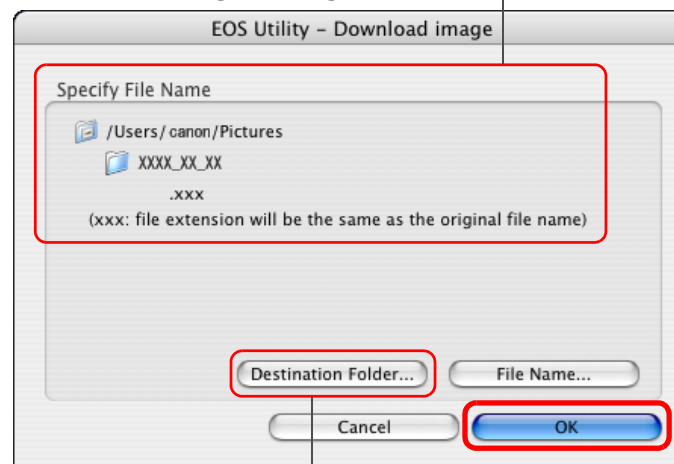


→ The [Download image] dialog box appears.

4 Specify the save destination and then click the [OK] button.

Displays the save destination on the computer

Download image dialog box



Specify the save destination

- The [Save File] dialog box appears and image downloading to your computer begins.
- When all images have been downloaded, DPP starts up automatically and the downloaded images are displayed.
- To switch to the main window, click the [Main Window] button in the viewer window.

Introduction

Contents at a Glance

Downloading Images

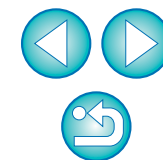
Camera Settings

Remote Shooting

Preferences

Reference

Index



For a list of viewer window functions, refer to [p.43](#).

Downloading Images with a Card Reader

You can use a third-party card reader to download images to your computer. However, EU does not support image downloading using a card reader. For this reason, when downloading images using a card reader, use one of the following 3 procedures.

Downloading Images Using Digital Photo Professional

You can use DPP to download to your computer images in a third-party card reader connected to your computer.

For detailed instructions, refer to “Downloading Images Using Your Card Reader” in the “Digital Photo Professional Instruction Manual” (PDF electronic manual).

Downloading Images Using ImageBrowser

You can use ImageBrowser to download to your computer images in a third-party card reader connected to your computer.

For detailed instructions, refer to “Downloading Images from Your Camera” in the “ImageBrowser Instruction Manual” (PDF electronic manual).

Downloading Images without Using Canon Software

To download images with a card reader without using Canon software such as EU, DPP or ImageBrowser, copy to your computer the [DCIM] folder saved in the memory card.

For more details about folder structures and files in the memory card, refer to [p.41](#).

Quitting EU

1 Click the [Quit] button.



→ The window closes and EU quits.

2 Turn the camera's power switch to < OFF >.

3 Disconnect the cable from the camera and computer.

● Do not pull on the cable; hold the plug and pull out.

Introduction

Contents at a Glance

Downloading Images

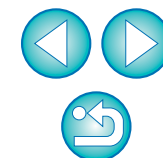
Camera Settings

Remote Shooting

Preferences

Reference

Index



2 Setting the Camera from Your Computer



This section explains how to set the camera's functions from EU.

| | |
|--|----|
| Setting the Camera Owner's Name and Date/Time ... | 11 |
| Available Settings | 12 |
| Setting up Camera Functions | 13 |
| Available Settings | 14 |
| Setting Picture Styles and Applying to the Camera.... | 15 |
| Selecting a Picture Style and Applying to the Camera | 15 |
| Changing Picture Style Settings and Applying to the Camera | 16 |
| Customizing Picture Styles and Applying to the Camera | 17 |
| Applying Picture Style Files to the Camera | 18 |
| Registering Personal White Balance in the Camera ... | 19 |
| Setting JPEG Quality and Applying to the Camera | 20 |
| Adjusting White Balance and Applying to the Camera... | 20 |
| Setting My Menu and Registering to the Camera | 21 |

Introduction

Contents at a Glance

Downloading Images

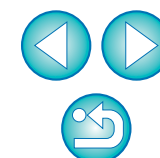
Camera Settings

Remote Shooting

Preferences

Reference

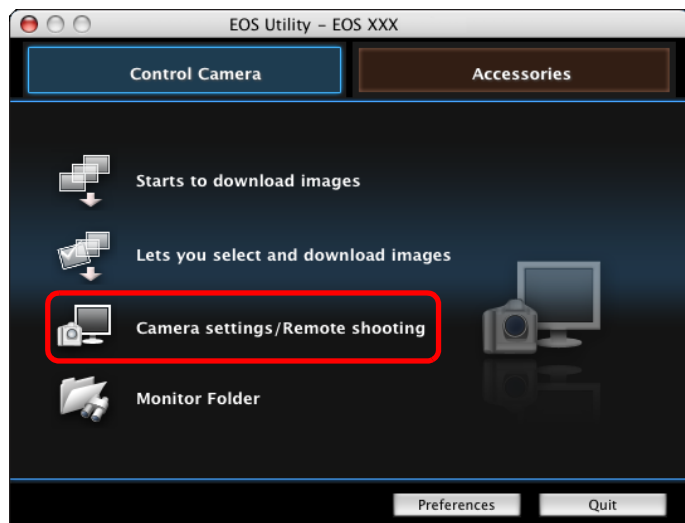
Index



Setting the Camera Owner's Name and Date/Time

You can set and apply to the camera, the camera owner's name and date/time, and record these as shooting information of shot images.

- 1 Connect your camera and computer, and then start up EU (p.5).
- 2 Click [Camera settings/Remote shooting].



→ The capture window appears.

- 3 Click the [] button.

Capture window



→ The [Set-up menu] appears.

Introduction

Contents at a Glance

Downloading Images

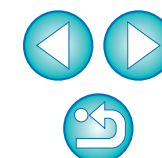
Camera Settings

Remote Shooting

Preferences

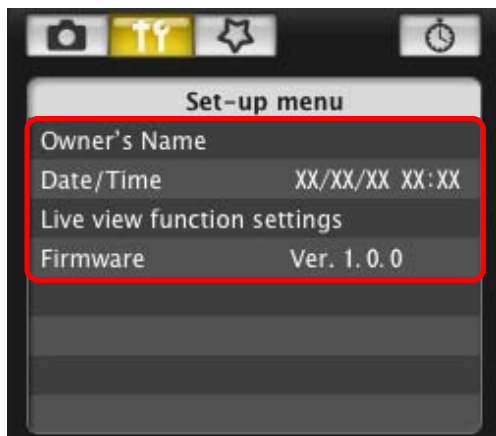
Reference

Index



4 Click the required setting and specify each one.

Set-up menu



- For more details, refer to the “Available Settings” ([Description on the right](#)).

5 When setting is complete, click the [Main Window] button to return to the main window.



→ The main window appears.

Available Settings

Owner's Name

- You can enter up to 31 characters and register the camera owner's name.

Date/Time

- You can set the camera's date and time.

Live View Function Settings

- You can set whether the Live View shooting function ([p.25](#)) is available or not.

Firmware

- You can display the version of the camera's firmware.
- You can update the firmware by clicking on this item.
- For more details on updating firmware, refer to the Canon's website.

Introduction

Contents at a Glance

Downloading Images

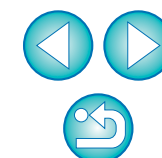
Camera Settings

Remote Shooting

Preferences

Reference

Index



Setting up Camera Functions

You can set and apply to the camera Picture Styles, personal white balance, JPEG quality and white balance adjustment.

- 1 Connect your camera and computer, and then start up EU (p.5).
- 2 Click [Camera settings/Remote shooting].



→ The capture window appears.

- 3 Click the [] button.



→ The [Shooting menu] appears.

Introduction

Contents at a Glance

Downloading Images

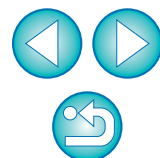
Camera Settings

Remote Shooting

Preferences

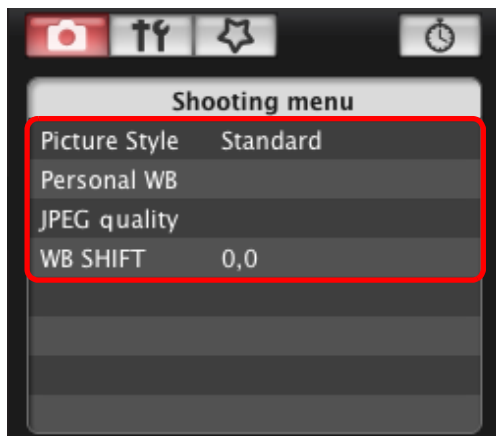
Reference

Index



4 Click the required setting and specify each one.

Shooting menu



- For more details, refer to the “Available Settings” ([Description on the right](#)).

5 When setting is complete, click the [Main Window] button to return to the main window.



→ The main window appears.

Available Settings

Picture Style

- You can set a Picture Style and apply it to the camera, in the same way as operating from the camera ([p.15](#)).

Personal White Balance

- You can register to the camera a personal white balance file saved in RAW Image Task ([p.19](#)).

JPEG Quality

- You can set the JPEG image quality and apply it to the camera, in the same way as operating from the camera ([p.20](#)).

White Balance Adjustment

- You can adjust the white balance, in the same way as operating from the camera ([p.20](#)).

Introduction

Contents at a Glance

Downloading Images

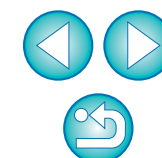
Camera Settings

Remote Shooting

Preferences

Reference

Index



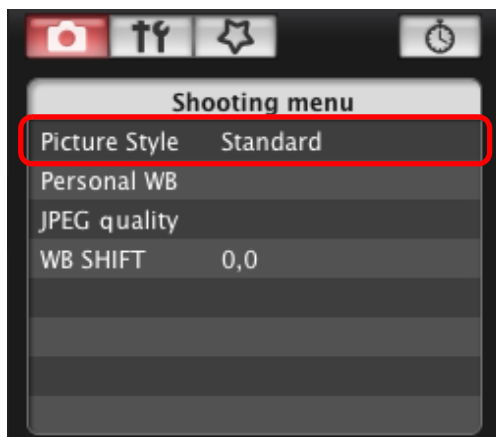
Setting Picture Styles and Applying to the Camera

You can set and apply Picture Styles to the camera, in the same way as operating from the camera. You can change the values for [Sharpness], [Contrast], [Saturation] and [Color tone] of each Picture Style and register up to three of your own Picture Styles in the camera as user-defined settings.

You can also register Picture Style files in the camera as user-defined settings you have downloaded from the Canon's website and saved to your computer.

Selecting a Picture Style and Applying to the Camera

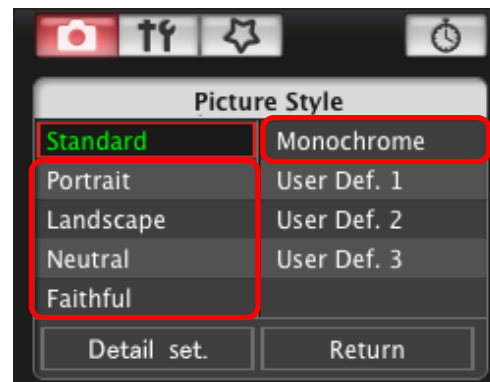
1 Click [Picture Style].



→ The [Picture Style] window appears.

2 Click the Picture Style to be set in the camera.

Picture Style window



→ The setting is applied to the camera and the display returns to the [Shooting menu].

Introduction

Contents at a Glance

Downloading Images

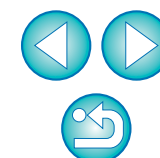
Camera Settings

Remote Shooting

Preferences

Reference

Index



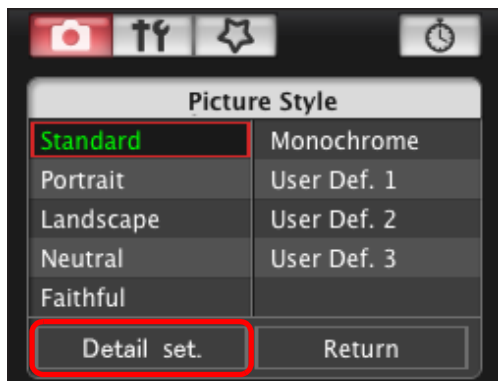
Changing Picture Style Settings and Applying to the Camera

You can set your own Picture Style [Sharpness], [Contrast], [Saturation] and [Color tone] and apply them to the camera, in the same way as operating from the camera.

1 Click [Picture Style] (p.15).

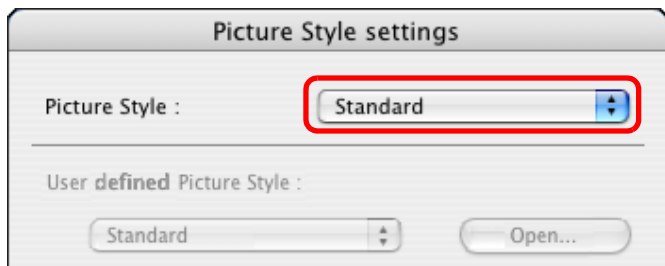
→ The [Picture Style] window appears.

2 Click [Detail set.].



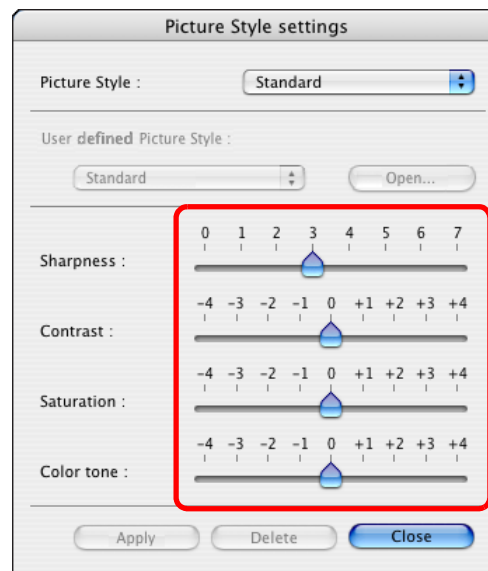
→ The [Picture Style settings] dialog box appears.

3 Select a Picture Style from the [Picture Style] list box.

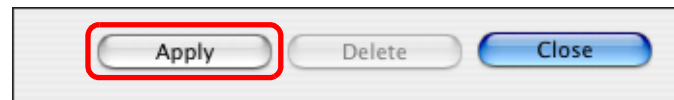


→ If you select [Monochrome], the [Filter effect] and [Toning effect] list boxes appear.

4 Drag the slider for each item left or right.



5 Click the [Apply] button.



→ The settings are registered in the camera.

6 Click the [Close] button.

→ The [Picture Style settings] dialog box closes.

7 In the [Picture Style] window (the window in step 2), click the Picture Style whose setting values you have changed.

→ The setting is applied to the camera and the display returns to the [Shooting menu].

Introduction

Contents at a Glance

Downloading Images

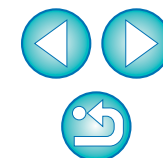
Camera Settings

Remote Shooting

Preferences

Reference

Index



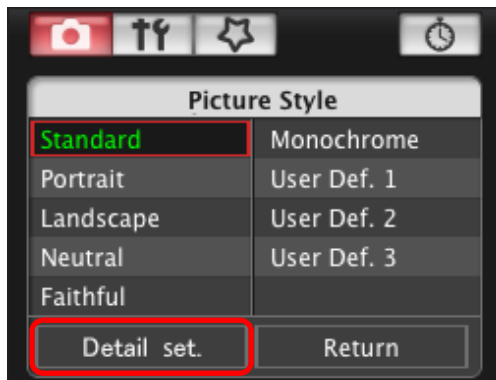
Customizing Picture Styles and Applying to the Camera

You can set your own Picture Style item, [Sharpness], [Contrast], [Saturation] and [Color tone] values and register up to three of these as user-defined settings in your camera, in the same way as operating from the camera.

1 Click [Picture Style] (p.15).

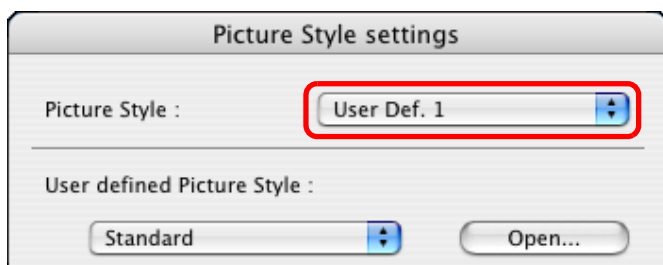
→ The [Picture Style] window appears.

2 Click [Detail set.].

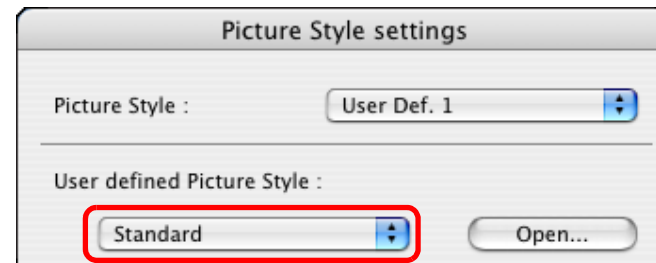


→ The [Picture Style settings] dialog box appears.

3 Select one of [User Def. 1] to [User Def. 3] from the [Picture Style] list box.

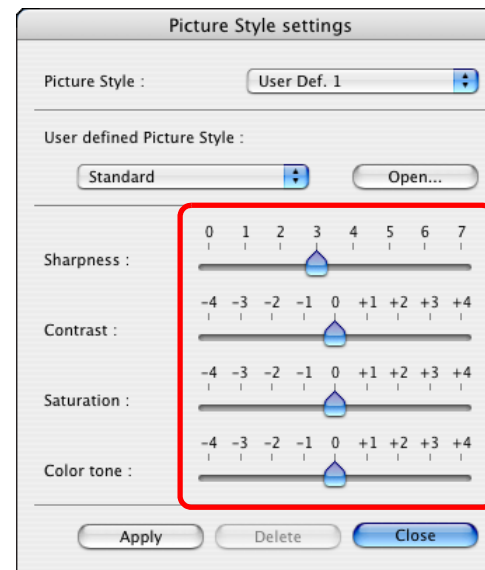


4 Select a Picture Style from the [User defined Picture Style] list box.



→ If you select [Monochrome], the [Filter effect] and [Toning effect] list boxes appear.

5 Drag the slider for each item left or right.



● The steps that follow are the same as step 5 to step 7 on p.16.

Introduction

Contents at a Glance

Downloading Images

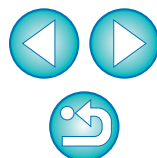
Camera Settings

Remote Shooting

Preferences

Reference

Index



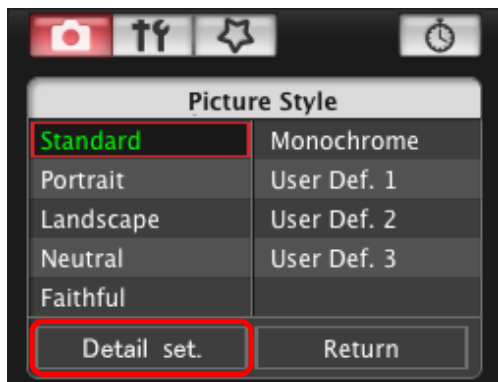
Applying Picture Style Files to the Camera

You can register up to three Picture Style files downloaded from the Canon's website and saved to your computer, as user-defined settings in your camera.

1 Click [Picture Style] (p.15).

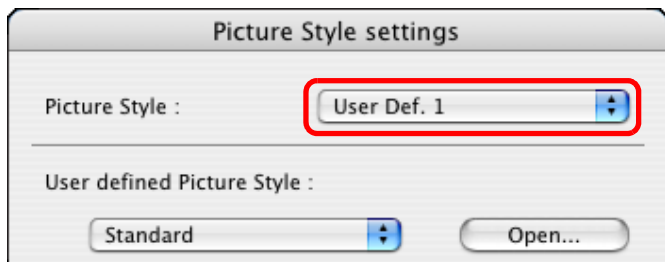
→ The [Picture Style] window appears.

2 Click [Detail set.].

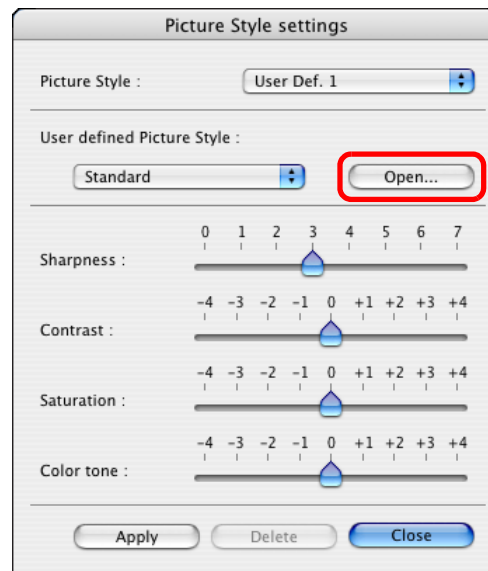


→ The [Picture Style settings] dialog box appears.

3 Select one of [User Def. 1] to [User Def. 3] from the [Picture Style] list box.



4 Click the [Open] button and select a Picture Style file that has been saved to your computer.



• The steps that follow are the same as step 5 to step 7 on p.16.



- A Picture Style file is an extended function of a Picture Style, and is a file that provides image characteristics that are effective for the images shot in a very limited number of scenes. For more details on Picture Style files, refer to the Canon's website.
- The Picture Style files that you can apply to the camera are files with the ".PF2" extension only.

Introduction

Contents at a Glance

Downloading Images

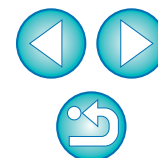
Camera Settings

Remote Shooting

Preferences

Reference

Index

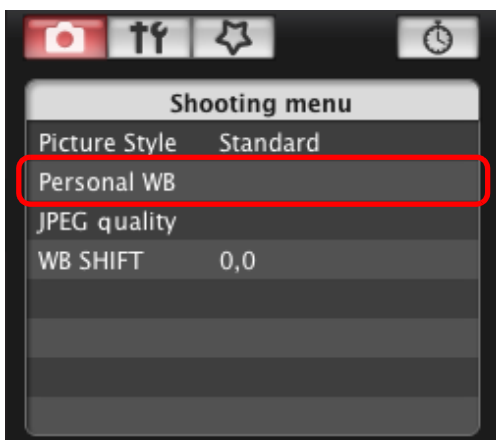


Registering Personal White Balance in the Camera

With RAW Image Task (RAW image processing software), you can adjust the white balance of shot RAW images and you can save those results as white balance files. In EU, you can register up to five white balance files in the camera as personal white balance and use them when you shoot in specific environments.

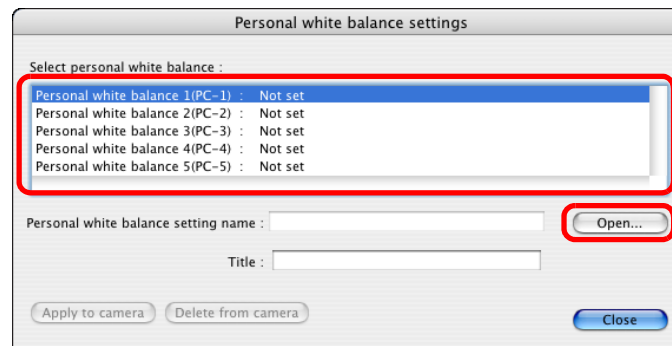
For instructions on how to save white balance files using RAW Image Task, refer to “Processing RAW Images” in the “ImageBrowser Instruction Manual” (PDF electronic manual).

1 Click [Personal WB].



→ The [Personal white balance settings] dialog box appears.

2 Select the personal white balance to be registered and click the [Open] button.



→ The file selection window appears.

3 Open the folder containing the saved white balance file, select the file and then click the [Open] button.

→ The white balance file is loaded.

- The white balance files that you can register to the camera are files with the “.WBD” extension only.

4 Enter a title into the [Title] input box.

5 Click the [Apply to camera] button.

- The personal white balance is registered on the camera.
- To register another setting, repeat step 2 to step 5.

6 Click the [Close] button.

→ The [Personal white balance settings] dialog box closes and the display returns to the [Shooting menu].

7 Select a registered personal white balance on the camera.

- Select a registered personal white balance (PC-1 to 5) as the white balance for your shot.
- For selecting personal white balance, refer to “Selecting the White Balance” in the camera’s Instruction Manual provided with your camera.

Introduction

Contents at a Glance

Downloading Images

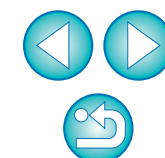
Camera Settings

Remote Shooting

Preferences

Reference

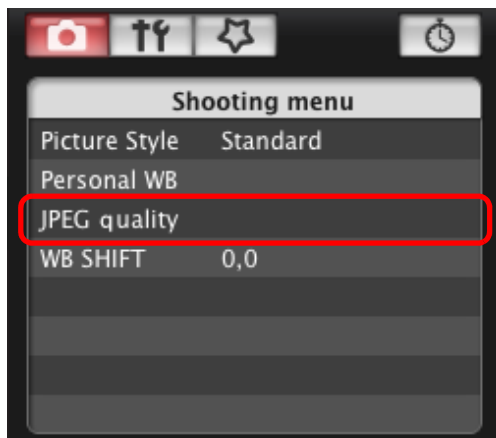
Index



Setting JPEG Quality and Applying to the Camera

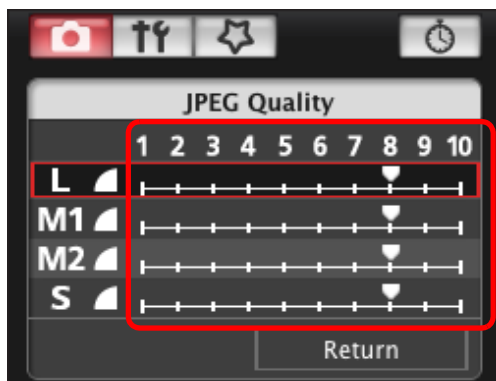
You can set the JPEG image quality and apply it to the camera, in the same way as operating from the camera.

1 Click [JPEG quality].



→ The [JPEG quality] window appears.

2 Click the setting position.



→ The settings are applied to the camera.

- Higher values give a lower compression ratio and higher image quality for any size.

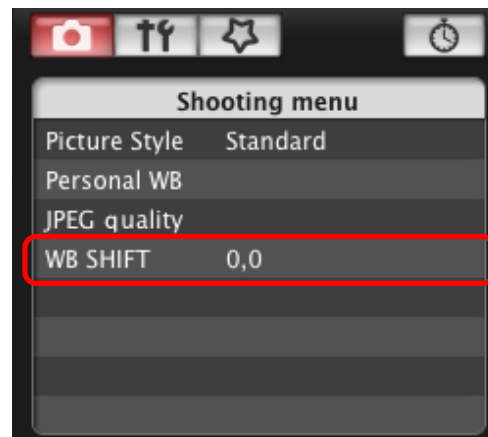
3 Click [Return].

→ The display returns to the [Shooting menu].

Adjusting White Balance and Applying to the Camera

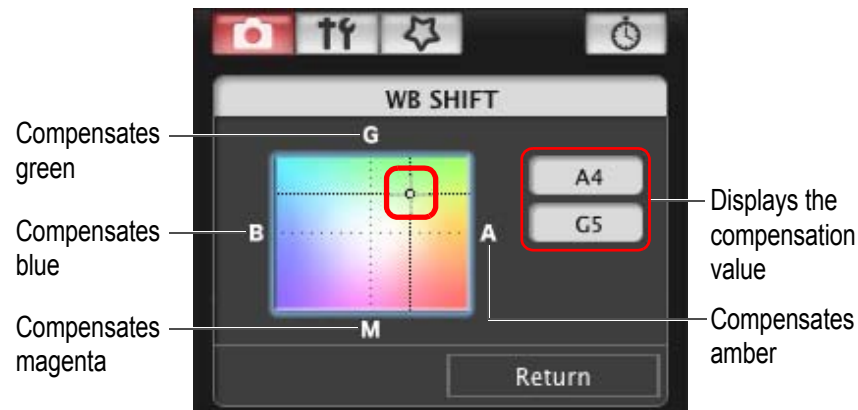
You can adjust white balance, in the same way as operating from the camera.

1 Click [WB SHIFT].



→ The [WB SHIFT] window appears.

2 Click the compensation position.



→ The settings are applied to the camera.

3 Click [Return].

→ The display returns to the [Shooting menu].

- To revert the corrected values to the original values, follow the procedure in step 2.

Introduction

Contents at a Glance

Downloading Images

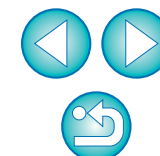
Camera Settings

Remote Shooting

Preferences

Reference

Index



Setting My Menu and Registering to the Camera

You can register up to six frequently used menu items as My Menu and register them to the camera, in the same way as operating from the camera.

You can register top layer items of each tab as well as all items of Custom Functions.

1 Connect your camera and computer, and then start up EU (p.5).

2 Click [Camera settings/Remote shooting].



→ The capture window appears.

3 Click the [] button.



→ The [My Menu] appears.

Introduction

Contents at a Glance

Downloading Images

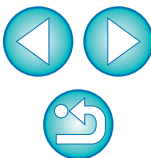
Camera Settings

Remote Shooting

Preferences

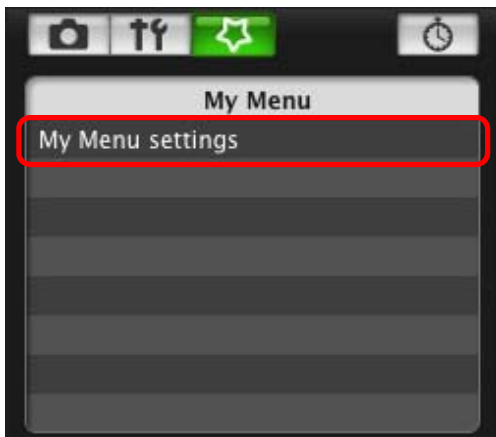
Reference

Index



4 Click [My Menu settings].

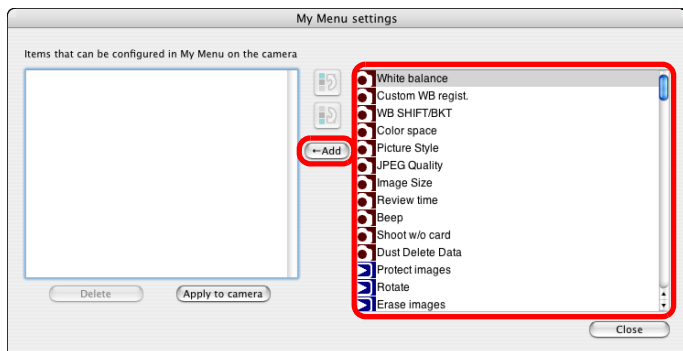
My Menu



→ The [My Menu settings] window box appears.

5 Select the item to be registered and click the [Add] button.

My Menu settings window



→ The selected item is added to [Items that can be configured in My Menu on the camera] on the left side of the window.

- You can register up to six items with the above procedure.
- You can change the position of an item by selecting it and then clicking the [] or [] button to move it.

6 Click the [Apply to camera] button.

→ The setting is applied to the camera.

Introduction

Contents at a Glance

Downloading Images

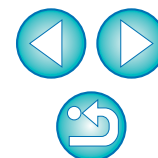
Camera Settings

Remote Shooting

Preferences

Reference

Index

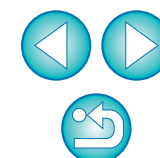


3 Remote Shooting by Controlling the Camera from Your Computer



From EU you can control the camera remotely, and by viewing the subject in the EU window, you can set the camera and shoot. You can also shoot by directly operating your camera even during remote shooting, or preset a time allowing the camera to shoot automatically with timer shooting.

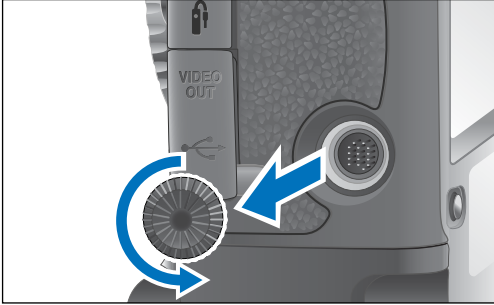
| | |
|---|----|
| Preparation Before Remote Shooting..... | 24 |
| Remote Live View Shooting | 25 |
| Adjusting the Focus | 27 |
| White Balance | 27 |
| Enlarging an Image and Focusing | 28 |
| Adjusting the Horizontal/Vertical Alignment of the Camera..... | 29 |
| Changing the Aspect Ratio..... | 30 |
| Shooting by Operating the Camera | 30 |
| Timer-controlled Shooting | 31 |
| Timer Shooting | 31 |
| Interval Timer Shooting | 31 |
| Bulb Exposures | 32 |

[Introduction](#)[Contents at
a Glance](#)[Downloading
Images](#)[Camera
Settings](#)[Remote
Shooting](#)[Preferences](#)[Reference](#)[Index](#)

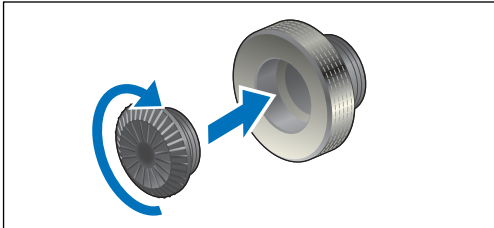
Preparation Before Remote Shooting

Fix the plug to the camera with the cable protector to prevent it from detaching during remote shooting.

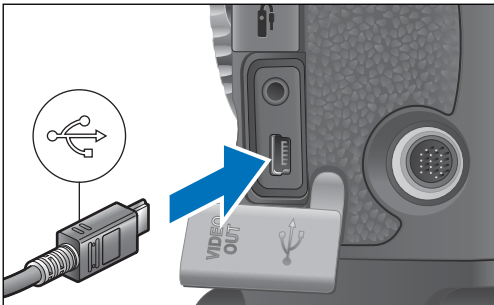
1 Remove the cap.



2 Attach the cap on the fixing screw.

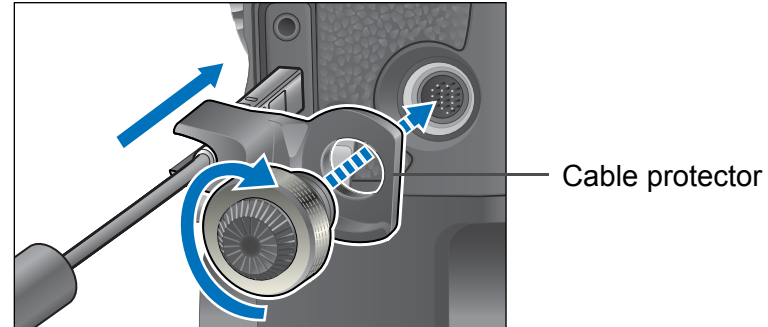


3 Connect the small plug of the cable into the < ⚡ > terminal on your camera.



- Connect with the < ⚡ > mark on the plug facing the front of the camera.

4 Attach the cable protector and fix it with the fixing screw.



Introduction

Contents at a Glance

Downloading Images

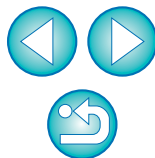
Camera Settings

Remote Shooting

Preferences

Reference

Index



Remote Live View Shooting

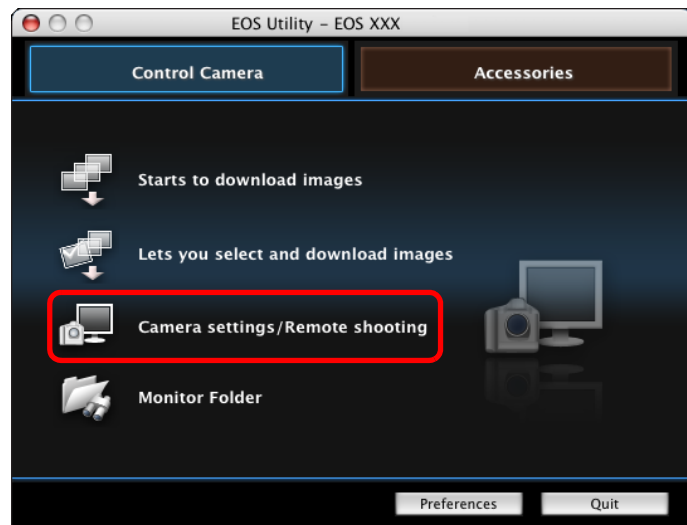
You can control your camera remotely from EU, and while viewing on your computer, you can focus the subject and check the results of your camera settings before shooting.

Also, the shot image is saved directly on your computer and you can recheck it using linked Digital Photo Professional (hereinafter DPP). This function is effective for shooting large numbers with fixed-framing such as for studio shooting.

1 Connect your camera and computer, and then turn the camera's power switch to < ON >.

- EU starts up.
- Looking into the viewfinder of the camera, compose your picture and adjust the focus.

2 Click [Camera settings/Remote shooting].



→ The capture window appears.

3 Set the camera.



Double-click the setting item and select the setting

- You can also use the functions of the [Shooting menu] (p.13).
- The settings that cannot be set in the capture window (drive mode, AF mode, etc.) can be set by operating the camera.

Introduction

Contents at a Glance

Downloading Images

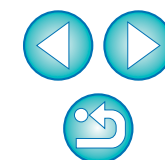
Camera Settings

Remote Shooting

Preferences

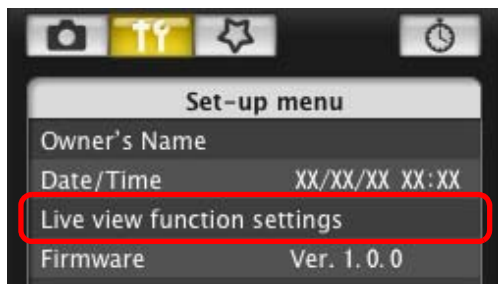
Reference

Index



4 Set the Live View function.

- Display [Set-up menu] (p.11) and click [Live View function settings], and then select [Live View shoot. Enable].

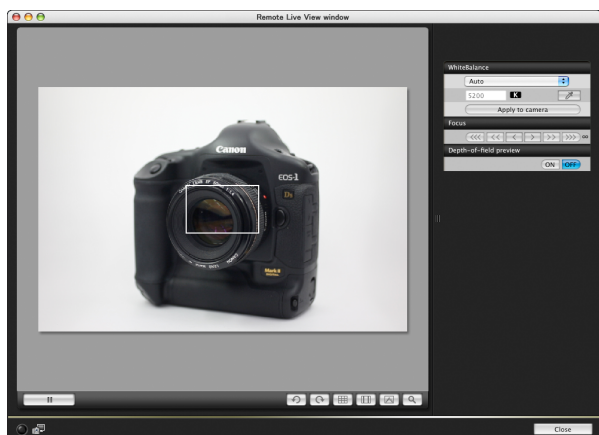


5 Click the Remote Live View display button.

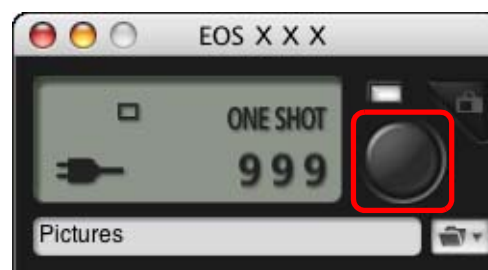


→ The [Remote Live View window] appears.

Remote Live View window



6 Click the [●] button to shoot.



→ The shot image is transferred to your computer, DPP starts up automatically and the shot image is displayed.

- You cannot operate the camera when the [Remote Live View window] is displayed. By pressing the camera's < SET > button, Live View image will also be displayed on the camera's LCD monitor, and then you can operate the camera.
- You can shoot by operating the capture window, even if the [Remote Live View window] is not displayed.
- You can change the software that starts up automatically when remotely shot images are transferred to your computer from DPP to ImageBrowser or other software (p.35).
- You can save shot images to both your computer and a memory card (p.35).
- To perform exposure simulation with [Remote Live View window] or enable display of histograms, set your camera's Custom Function [Live View exposure simulation] to [Enable].
- For a list of the Remote Live View window functions, refer to p.46.

Introduction

Contents at a Glance

Downloading Images

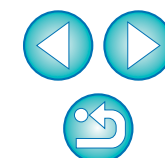
Camera Settings

Remote Shooting

Preferences

Reference

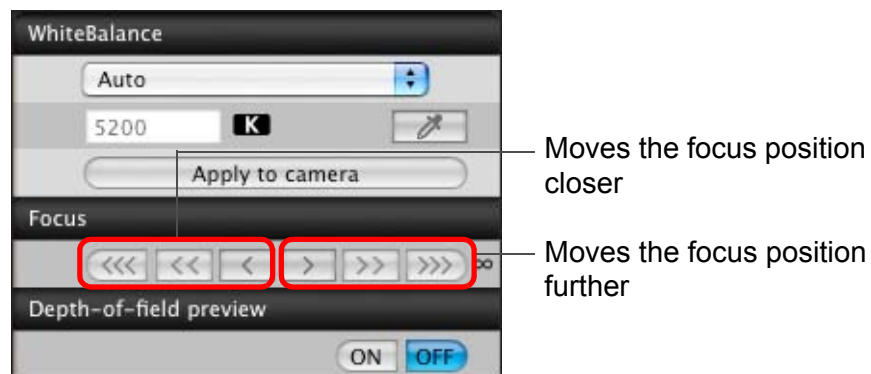
Index



Adjusting the Focus

Set the lens's focus mode switch to < AF > and you can adjust the focus while looking at the Remote Live View window.

Adjust the focus.

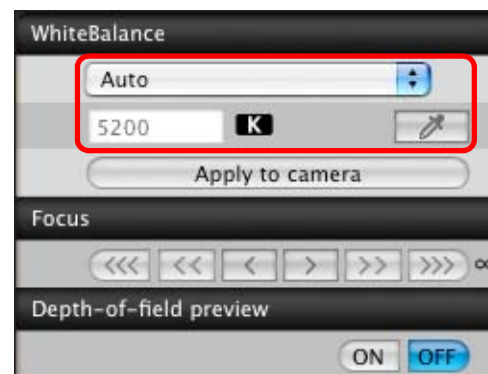


- The [Remote Live View window] changes in real time according to the focus position adjustment.
- You can also enlarge the image and then focus (p.28).
- To check the depth of field, click the [ON] button in [Depth-of-field preview]. When [ON], exposure simulation can be performed.

White Balance

You can change the white balance while looking at the Remote Live View window.

Select the white balance to apply to the image.



- To apply the set white balance to your camera, click the [Apply to camera] button.

Introduction

Contents at a Glance

Downloading Images

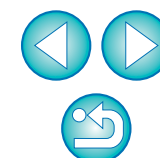
Camera Settings

Remote Shooting

Preferences

Reference

Index

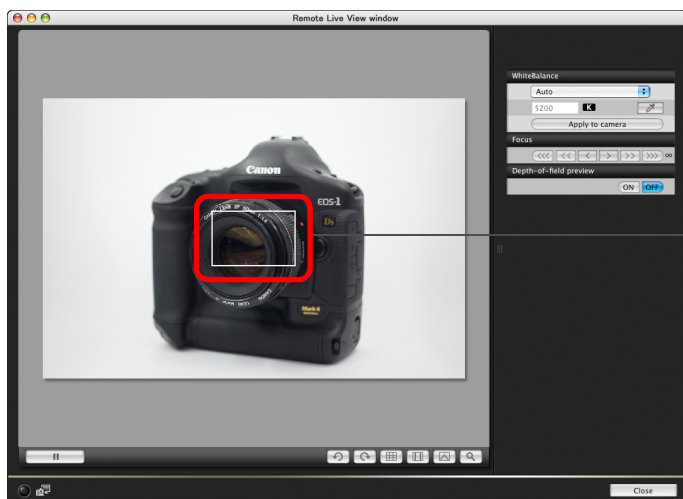


Enlarging an Image and Focusing

You can display an image at 100% enlargement (actual pixel size) and adjust focus more accurately.

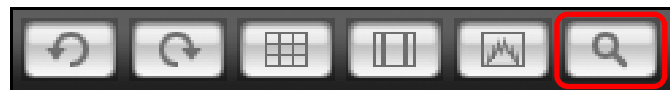
1 Display the [Remote Live View window] (p.25).

2 Drag [] to the section you want to enlarge.



Drag

3 Click the [] button.



→ The section you selected in step 2 is displayed at 100% (actual pixel size) in the [Zoom View] window.



Zoom View Window



● To move the display position in the [Zoom View] window, click either [], [], [], or [].

4 Adjust the focus (p.27).

5 When you have finished adjusting the focus, click the [] button to return to the [Remote Live View window].



For a list of the Zoom View Window functions, refer to p.47.

Introduction

Contents at a Glance

Downloading Images

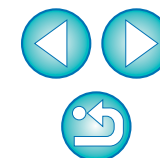
Camera Settings

Remote Shooting

Preferences

Reference

Index



Adjusting the Horizontal/Vertical Alignment of the Camera

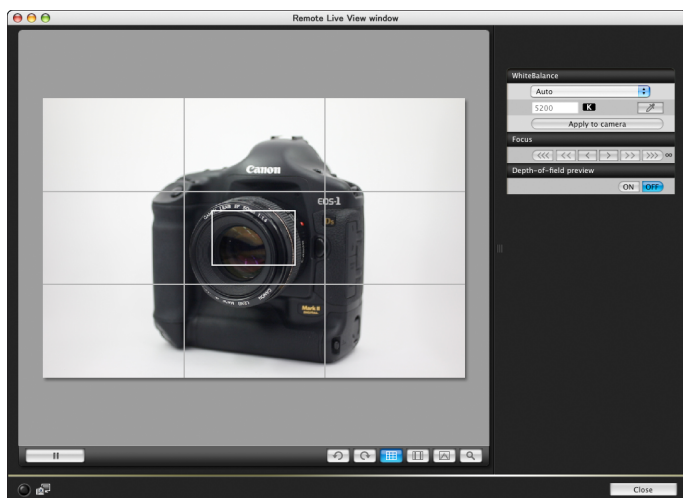
You can display gridlines in the [Remote Live View window] in the same way as the camera's live view function, and adjust the horizontal/vertical alignment of the camera.

1 Display the [Remote Live View window] (p.25).


2 Click the [] button.



→ Gridlines are displayed in the [Remote Live View window].



3 Move the camera to adjust the horizontal/vertical alignment.

- To remove the gridlines, click the [] button again.

Introduction

Contents at a Glance

Downloading Images

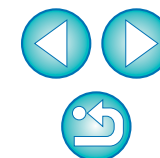
Camera Settings

Remote Shooting

Preferences

Reference

Index



Changing the Aspect Ratio

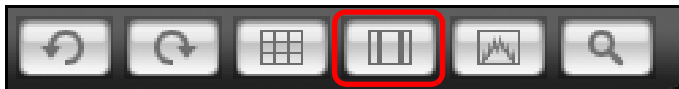
As with the camera's live view function, it is possible to shoot with a feeling similar to film-type medium-format/large-format cameras such as 6 × 6 cm, 6 × 4.5 cm and 4 × 5 inches.

Aspect ratio information is also attached automatically with a shot image, and when viewing an image with DPP, is displayed as an image trimmed based on the aspect ratio information.

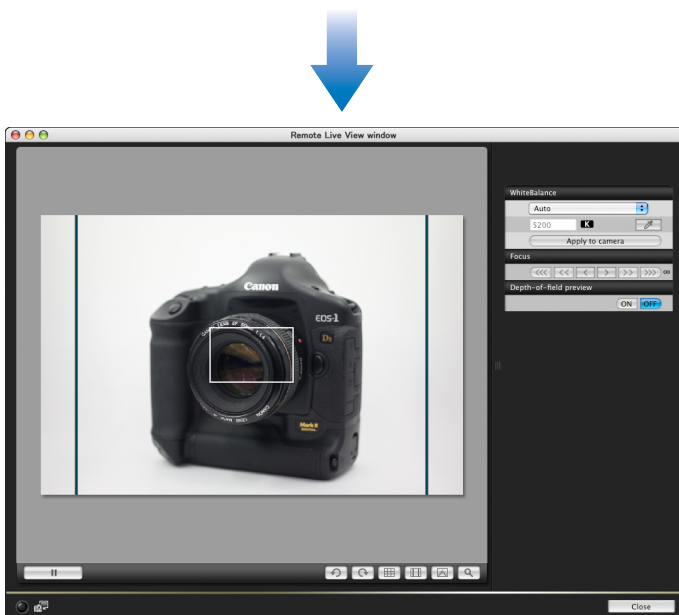
Further, aspect ratio information is only attached with a shot image, and the image itself is not actually trimmed.

1 Display the [Remote Live View window] (p.25).


2 Click the [] button and select the aspect ratio.



→ In the [Remote Live View window], the frame of the aspect ratio you selected is displayed.



3 Move the camera and compose your picture.

- To revert the aspect ratio to the normal condition, click the [] button and select [Off].


Shooting by Operating the Camera

Even when remote shooting is set, you can still operate the camera and shoot – as when shooting with only the camera. Also, since the shot images are saved to your computer's hard disk, you can shoot large quantities without having to worry about the capacity of the memory card.

1 Display the capture window (p.25).

2 Press the camera's shutter button and take a shot.

- The shot images are transferred to the computer, DPP starts up automatically, and the shot images are displayed.

 When the [Remote Live View window] is displayed, press the camera's < SET > button to display the Live View image on the camera's LCD monitor and operate the camera.

Introduction

Contents at a Glance

Downloading Images

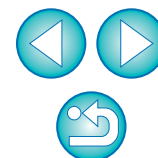
Camera Settings

Remote Shooting

Preferences

Reference

Index




Timer-controlled Shooting

Two types of timer shooting are available where the camera automatically takes shots at a specified time or a specified number.


Timer Shooting

You can automatically take a shot when the specified time elapses.

- 1 Display the capture window (p.25).
- 2 Click the [] button.
 - The [Timer shooting settings] dialog box appears.
- 3 Enter a delay time and click the [Start] button.
 - Enter a value between 0 seconds and 99 minutes and 59 seconds in one-second increments.
 - The shot is taken when the specified time elapses.

Interval Timer Shooting

You can automatically take shots by setting the interval between shots and the number of shots to be taken.

- 1 Display the capture window (p.25).
- 2 Click the [] button.
 - The [Timer shooting settings] dialog box appears.
- 3 Checkmark [Interval timer shooting].
- 4 Enter the shooting interval and the number of shots.
 - Enter a value between 5 seconds and 99 minutes and 59 seconds in one-second increments.
 - The minimum number of interval-timed shots is two. The number of shots you can take at timed intervals depends on the available space on your computer's hard disk.
- 5 Click the [Start] button.
 - The shots are taken at the specified intervals and for the specified number of shots.



On some types of computer, if you set a short interval between shots and there is insufficient time to transfer and save the images, it may not be possible to take shots at the specified interval. In this case, set a longer interval between shots and take the shots again.

Introduction

Contents at a Glance

Downloading Images

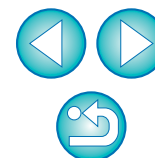
Camera Settings

Remote Shooting

Preferences

Reference


Index





Bulb Exposures

- 1 Display the capture window (p.25).
- 2 Double-click the shooting mode icon and select [BULB].



- 3 Set the desired aperture.
- 4 Click the [] button.
→ The [Timer shooting settings] dialog box appears.
- 5 Enter the exposure time and click the [Start] button.
 - Enter a value between 5 seconds and 99 minutes and 59 seconds in one-second increments.

 You can start/end bulb exposure without setting an exposure time by clicking the [] button.

Introduction

Contents at a Glance

Downloading Images

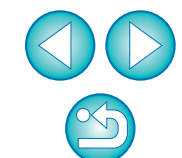
Camera Settings

Remote Shooting

Preferences

Reference

Index



4 Preferences



You can change each of the EU functions in the preferences window to make them easier to use.

| | |
|--------------------------|----|
| Preferences | 34 |
| Basic Settings | 34 |
| Destination Folder | 34 |
| File Name | 34 |
| Download Images | 35 |
| Remote Shooting | 35 |
| Linked Software | 35 |

Introduction

Contents at a Glance

Downloading Images

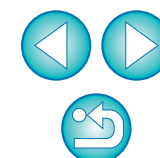
Camera Settings

Remote Shooting

4 Preferences

Reference

Index

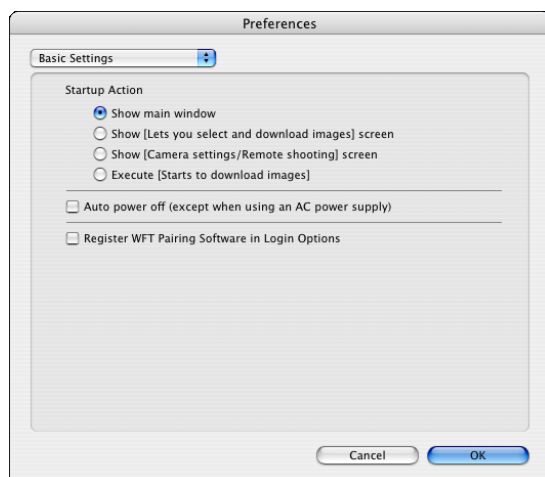


Preferences

- 1 On the main window, click the [Preferences] button.
→ The [Preferences] dialog box appears.
- 2 Specify the required settings and click the [OK] button.
→ The settings are applied to EU.

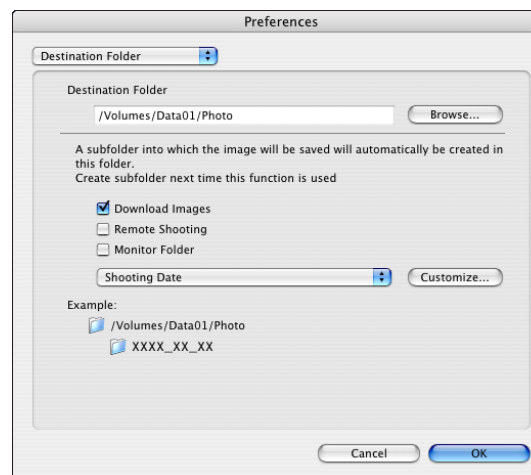
Basic Settings

You can specify the operation when EU starts up and whether the Auto power off function is enabled or disabled.



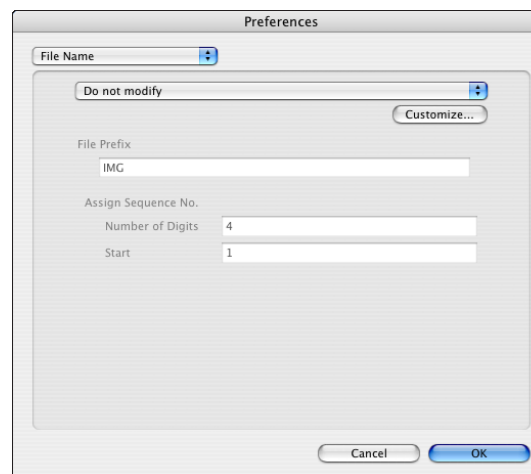
Destination Folder

You can specify the save destination of images downloaded from your camera or of images shot remotely.



File Name

You can specify the file name of images downloaded from your camera or of images shot remotely.



Introduction

Contents at a Glance

Downloading Images

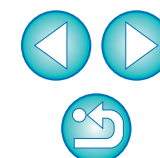
Camera Settings

Remote Shooting

Preferences

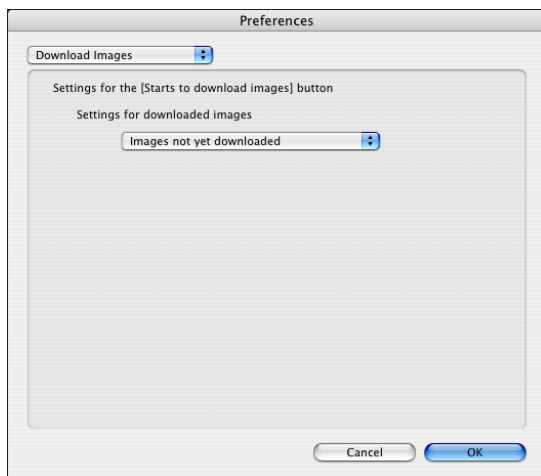
Reference

Index



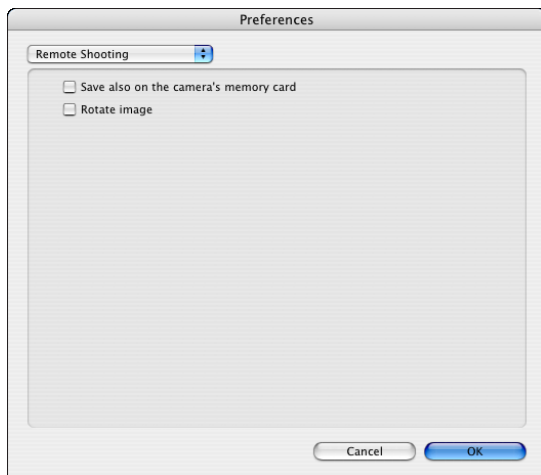
Download Images

You can set the images that are downloaded when the [Starts to download images] in the main window is clicked.



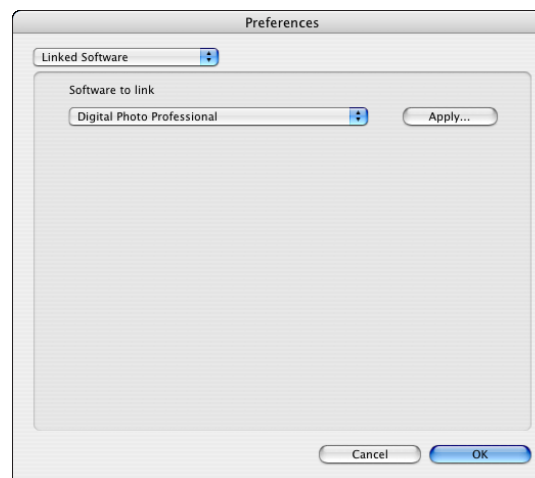
Remote Shooting

You can also save remotely shot images to the memory card inside the camera, and regardless of the camera's position at the time the shot is taken, activate the function that rotates the shot image. Set the rotation angle in the capture window (p.45).



Linked Software

You can select the linked software that starts up when images are downloaded from the camera or when images are shot remotely. Also, you can register third-party software as linked software by clicking the [Apply] button.



- When you have selected ImageBrowser, you can specify the operation for after images are downloaded.
- In the window displayed when you click the [Apply] button, you can specify the type of images to be downloaded when linked third-party software is started up.

Introduction

Contents at a Glance

Downloading Images

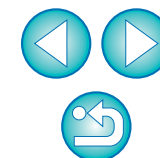
Camera Settings

Remote Shooting

Preferences

Reference

Index



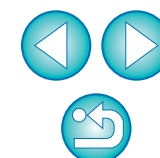


This reference section has been provided to enhance your experience using EU.

It contains various troubleshooting solutions, how to delete EU from your computer and explanations of the various windows.

An index is provided at the end of the chapter for you to easily find information you are looking for.

| | |
|--|----|
| Troubleshooting | 37 |
| Monitor Folder Function (Function for Use with the WFT-E2/E2A) | 39 |
| Function for Use with the Accessories | 40 |
| Folder Structure and File Names in the Memory Card ... | 41 |
| Uninstalling the Software | 41 |
| List of Main Window Functions | 42 |
| List of Viewer Window Functions | 43 |
| List of My Menu Settings Window Functions | 44 |
| List of Capture Window Functions | 45 |
| List of Remote Live View window Functions | 46 |
| List of Zoom View Window Functions | 47 |
| Index | 48 |
| About This Instruction Manual | 49 |
| Trademark Acknowledgments | 49 |

[Introduction](#)
[Contents at a Glance](#)
[Downloading Images](#)
[Camera Settings](#)
[Remote Shooting](#)
[Preferences](#)
[Reference](#)
[Index](#)


Troubleshooting

If EU is not operating correctly, refer to the items below.

Installation could not be completed correctly

- You cannot install software unless you are logged into an account with Administrator privileges. Log in again into an account with Administrator privileges.
For how to log in and how to specify Administrator settings, refer to the User's Manual for the Macintosh computer you are using or for Mac OS X.

EU does not start up

- If EU does not start up after following the instructions as explained, the software Preferences file may be corrupted. Quit all software, disconnect the interface cable from your computer, delete the Preferences file that is corrupted from the [Preferences] folder, and restart EU.
Delete the Preferences file below from the hard disk drive where the system is saved ► [Users] folder ► Folder of the logged in user ► [Library] folder ► [Preferences] folder.

| Preferences | Description |
|--|--|
| com.canon.EOS Utility.plist | EOS Utility Preferences file |
| Canon CameraCom Pref EOS CameraCom Pref | Communication preferences file used in common by each software |

EU and the camera are not communicating

- EU does not operate correctly on a computer if its system requirements does not meet. Use EU on a computer with compatible system requirements (p.2).
- For first generation iMacs, download the iMac Firmware Update from Apple's website and update the firmware. If you do not perform this update, EU will not operate correctly.
- Push the plug of the interface cable all the way into the socket. Loose connections can cause faults and malfunctions (p.5).
- Check that the camera's power switch is < ON > (p.5).
- EU and the camera may not communicate normally with a cable other than the EOS DIGITAL camera-dedicated Canon interface cable (p.5).
- Connect your camera and computer directly with the interface cable provided with your camera. Do not connect the camera via a hub; doing so may prevent EU and your camera from communicating normally.
- If you connect multiple USB devices (not including the mouse or keyboard) to your computer, the camera may not communicate normally. If the camera cannot communicate normally, disconnect USB devices other than the mouse or keyboard from your computer.
- Do not connect more than one camera to the same computer. Two or more cameras may not operate normally.
- If there is insufficient charge left in the camera battery, the camera cannot communicate with EU. Either replace with a fully charged battery or use the AC adaptor kit provided with your camera. Your computer does not supply power to the camera through the interface cable.

Introduction

Contents at a Glance

Downloading Images

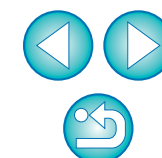
Camera Settings

Remote Shooting

Preferences

Reference

Index



Communication between EU and the camera disconnected

- Operation of the Auto power off function will automatically switch the camera off, disabling communication with EU, if you turn the Auto power off function to [ON]. Remove the checkmark from [Auto power off] in the [Basic Settings] window (p.34) of the preferences or set the Auto power off function in the camera to [OFF].
- If you do not perform any operation while the camera and computer are connected, depending on the computer system you are using, a confirmation message may appear on the screen asking whether you wish to continue communicating with the camera. If you do not perform an operation while this message appears, communication with your camera is discontinued and EU shuts down. In this case, turn the camera's power switch to < OFF >, then again to < ON > and start up EU.
- Do not put your computer to sleep while it is connected to the camera. If your computer goes into sleep mode, never disconnect the interface cable while your computer is still in sleep mode. Always wake your computer up while it is still connected to the camera. Depending on the type of computer, disconnecting the interface cable while your computer is in sleep mode could prevent the computer from waking up correctly. Refer to the computer User's Manual for more information on sleep mode.

Remotely shot images using EU do not display in DPP

- In Digital Photo Professional, select the [Tools] menu ► [Sync folder with EOS Utility].

Introduction

Contents at
a Glance

Downloading
Images

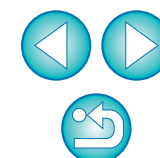
Camera
Settings

Remote
Shooting

Preferences

Reference

Index

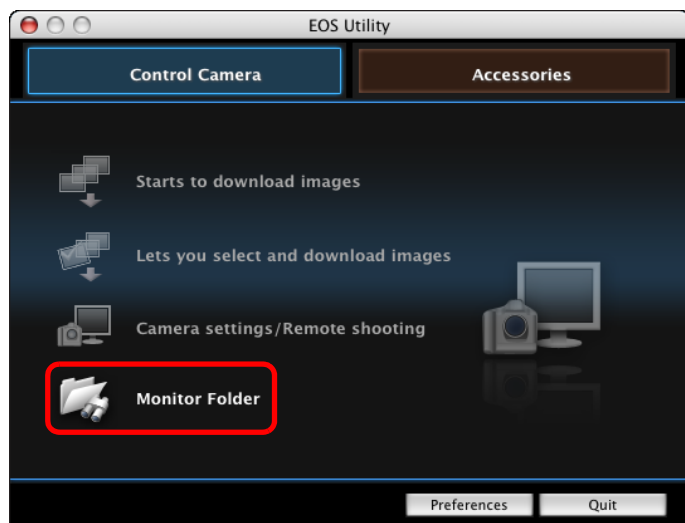


Monitor Folder Function (Function for Use with the WFT-E2/E2A)

This is a function for checking your images with Digital Photo Professional (hereinafter DPP) in real time using the Wireless File Transmitter WFT-E2/E2A (sold separately).

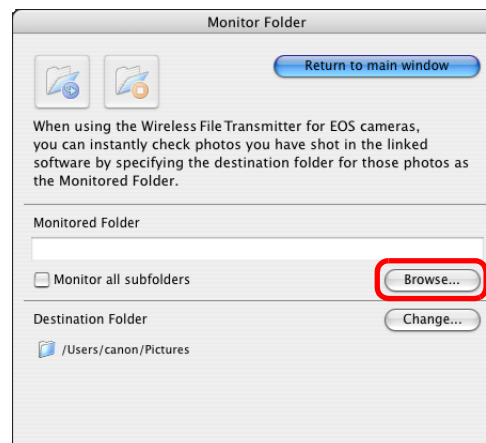
For setting the WFT-E2/E2A, refer to the Instruction Manual provided with the WFT-E2/E2A.

1 Click the [Monitor Folder] button.



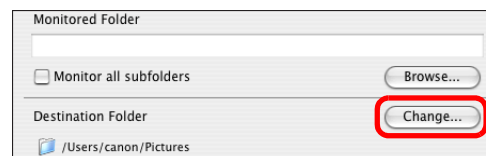
→ The [Monitor Folder] dialog box appears.

2 Click the [Browse] button and specify the save destination folder for shot images.



- The save destination folder for the shot images set in the WFT-E2/E2A is specified.

3 Click the [Change] button and specify the transfer destination folder.



4 Click the [] button.

→ Image transfer preparation is complete.

5 Take a shot.

- If images are saved in the folder specified in step 2, they are transferred/saved in the folder specified in step 3.
- DPP starts up and the images saved in the folder specified in step 3 are displayed.

! You cannot specify the same folders in step 2 and step 3.

📄 You can change the software that starts up in step 5, from DPP to ImageBrowser or other software (p.35).

Introduction

Contents at a Glance

Downloading Images

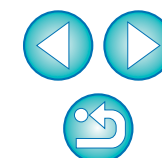
Camera Settings

Remote Shooting

Preferences

Reference

Index

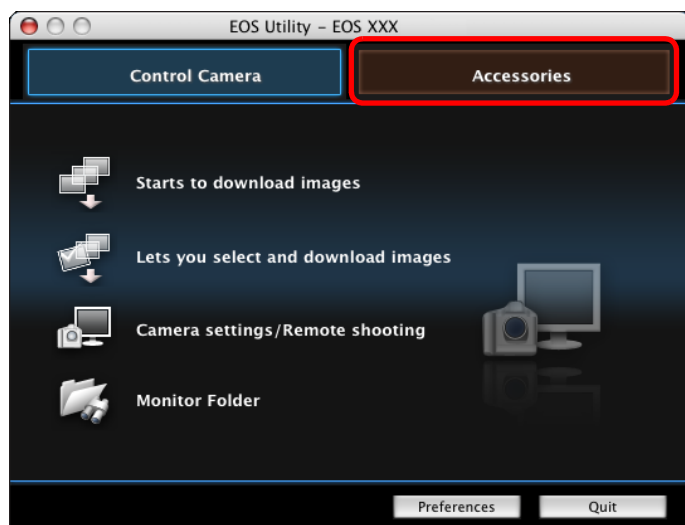


Function for Use with the Accessories

If you have the Wireless File Transmitter WFT-E2/E2A (sold separately), you can start up the previously mentioned accessory software from EU. For details on using the software for accessory, refer to the instruction manual provided with WFT-E2/E2A.

1 Connect your camera and computer, and then start up EU (p.5).

2 Click the [Accessories] tab.



→ The [Accessories] tab sheet appears.

3 Click the software.



→ The software for accessory starts up.

Introduction

Contents at a Glance

Downloading Images

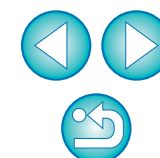
Camera Settings

Remote Shooting

Preferences

Reference

Index



Folder Structure and File Names in the Memory Card

Images shot with the camera are saved in the memory card's [DCIM] folder with the following folder structure and file names. Refer to the following when copying images to your computer using a card reader.

DCIM xxxEOS1D

| File name | Image type |
|--------------|------------|
| ****YYYY.JPG | JPEG image |
| ****YYYY.CR2 | RAW image |
| ****YYYY.WAV | Audio file |

- The camera specific character string set at the time of factory shipment or set in the camera appears in "****" of the file name.
- The "YYYY" in the file names represents a number between 0001 and 9999.

CANONMSC Contains a file allowing the camera to manage the images in the [DCIM] folder.

- The "xxx" in the folder names represents a number between 100 and 999.
- The folder structure is the same for CF cards, SD cards and external media.
- When you perform DPOF settings on the camera, a [MISC] folder is created. The files that manage the DPOF settings are saved in the [MISC] folder.



When Adobe RGB is specified, the file names of images shot with your camera have an underscore "_" as the first character.

Uninstalling the Software

- Before starting the software uninstallation, quit all programs you are using.
- Log into the account used when installation was performed.
- When you have moved the folders and the software to be deleted to the Trash, select the [Finder] menu ► [Empty Trash] and empty the Trash. You cannot reinstall the software until you have emptied the Trash.

1 Display the folder in which the software is saved.

- Open the [Canon Utilities] folder.



2 Drag the [EOS Utility] folder to the Trash.

3 Select the [Finder] menu on the desktop ► [Empty Trash].

→ EU is uninstalled.

4 Restart your computer.



You cannot retrieve data that you have emptied into the Trash and deleted, so be particularly careful when deleting data.

Introduction

Contents at a Glance

Downloading Images

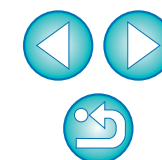
Camera Settings

Remote Shooting

Preferences

Reference

Index



List of Main Window Functions

Control camera tab sheet



- (p.6)
- (p.7, p.43)
- (p.25, p.45)
- (p.39)
- (p.34)
- Quits EU (p.9)

Accessories tab sheet



(p.40)

Introduction

Contents at a Glance

Downloading Images

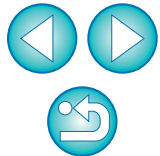
Camera Settings

Remote Shooting

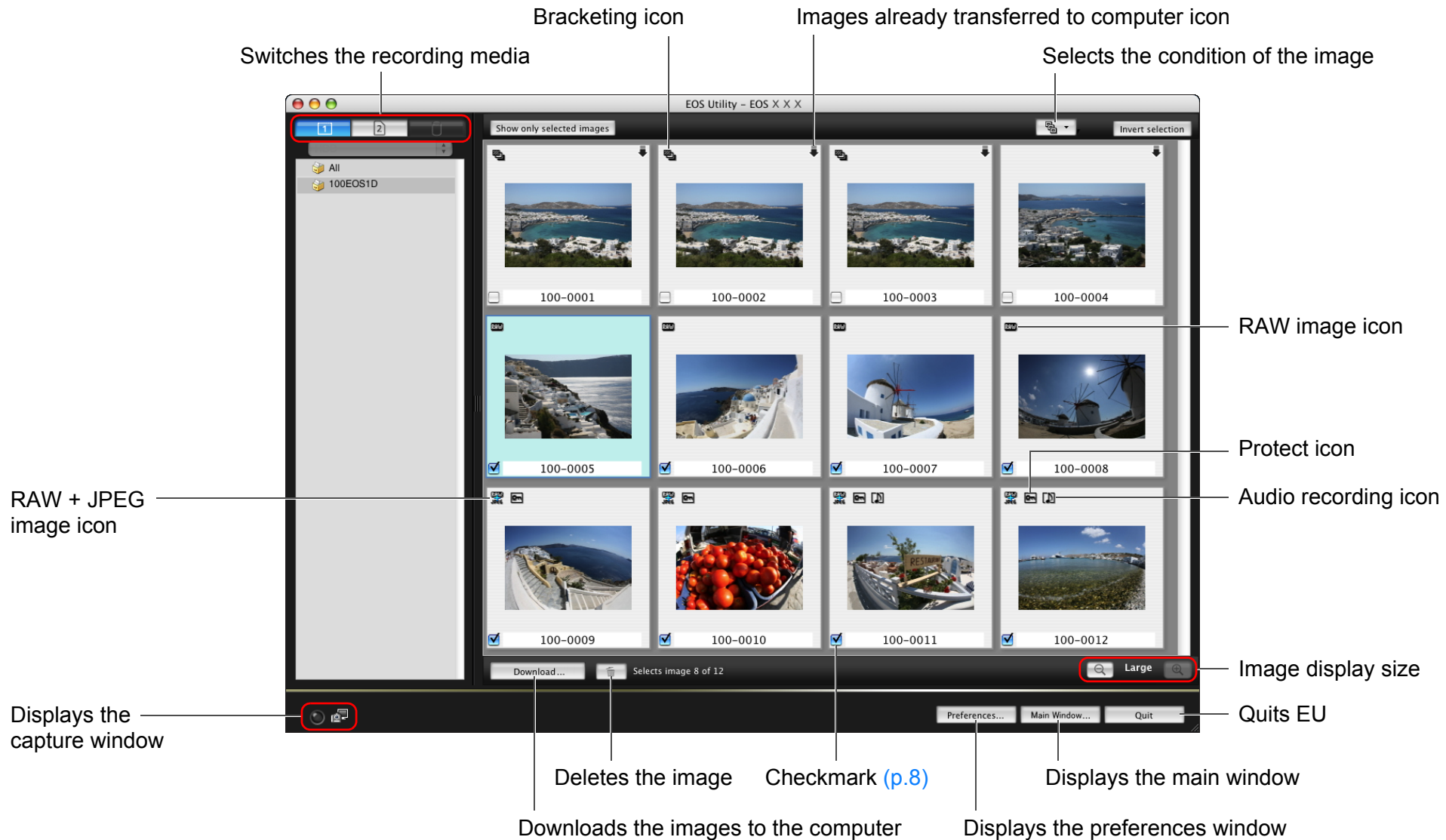
Preferences

Reference

Index



List of Viewer Window Functions



Introduction

Contents at a Glance

Downloading Images

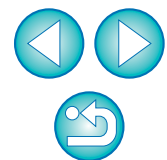
Camera Settings

Remote Shooting

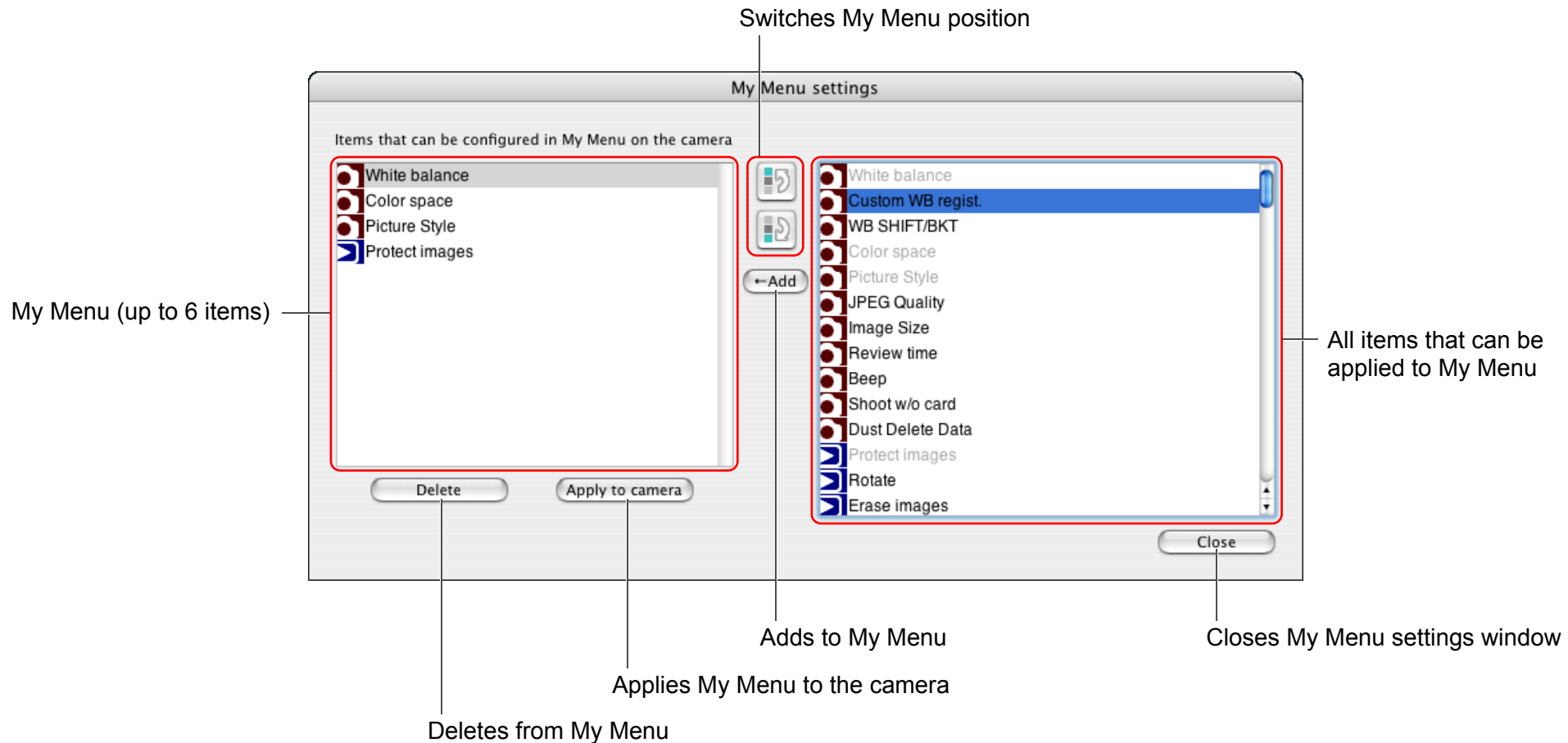
Preferences

Reference

Index



List of My Menu Settings Window Functions



Introduction

Contents at a Glance

Downloading Images

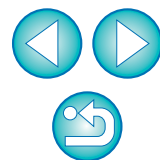
Camera Settings

Remote Shooting

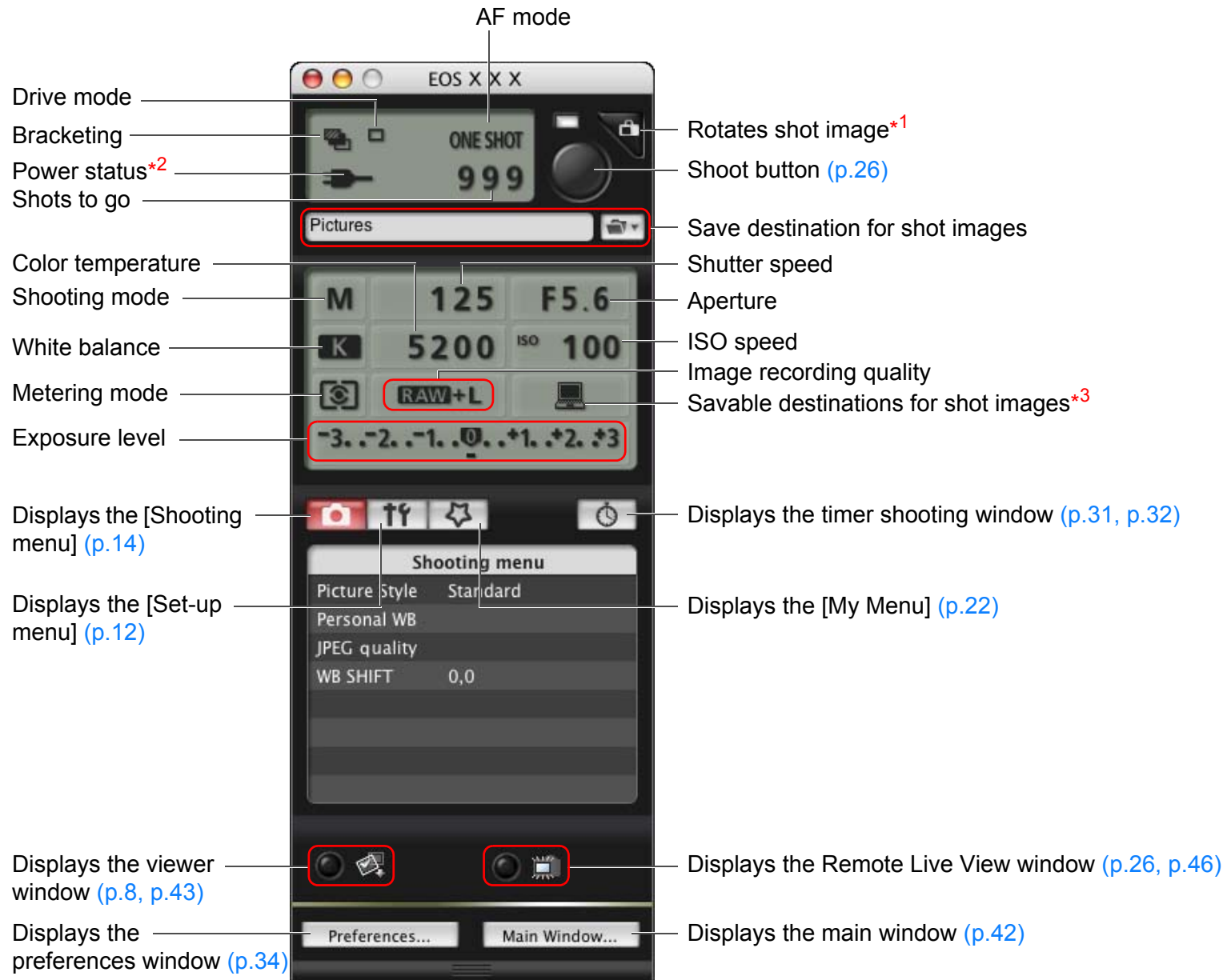
Preferences

Reference

Index



List of Capture Window Functions



*1 Each time you click the button, the shot image rotates 90 degrees. To make this function available, checkmark [Rotate image] in the [Remote Shooting] window (p.35) in preferences.

*2 When using the battery, the charge level and performance level can be displayed by moving the cursor over the icon.

*3 You can select whether the save destination for shot images is only the computer or both the computer and the memory card inside the camera.

Introduction

Contents at a Glance

Downloading Images

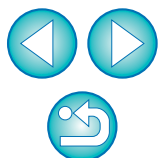
Camera Settings

Remote Shooting

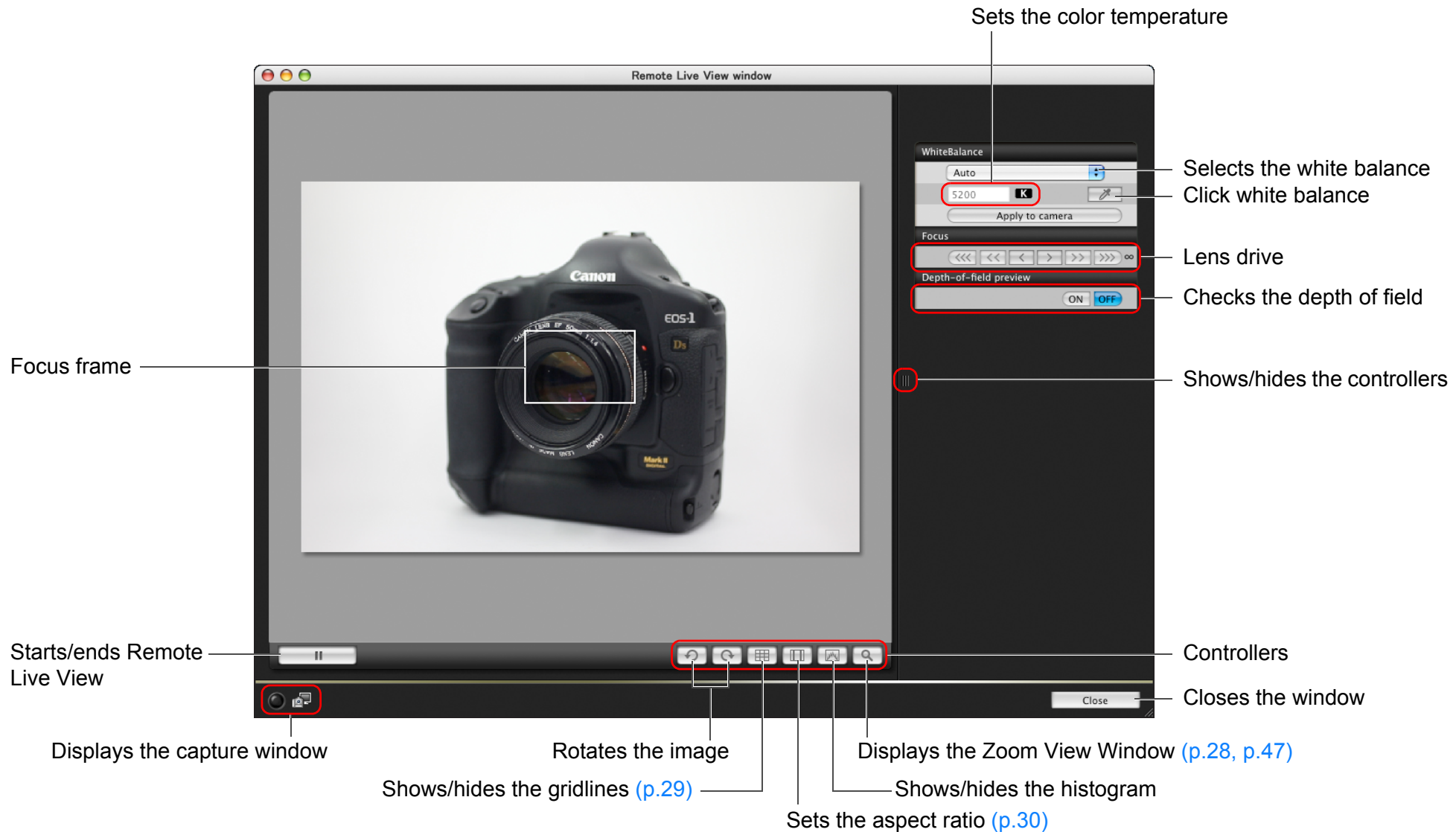
Preferences

Reference

Index



List of Remote Live View window Functions



Introduction

Contents at a Glance

Downloading Images

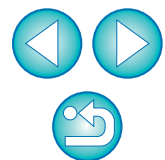
Camera Settings

Remote Shooting

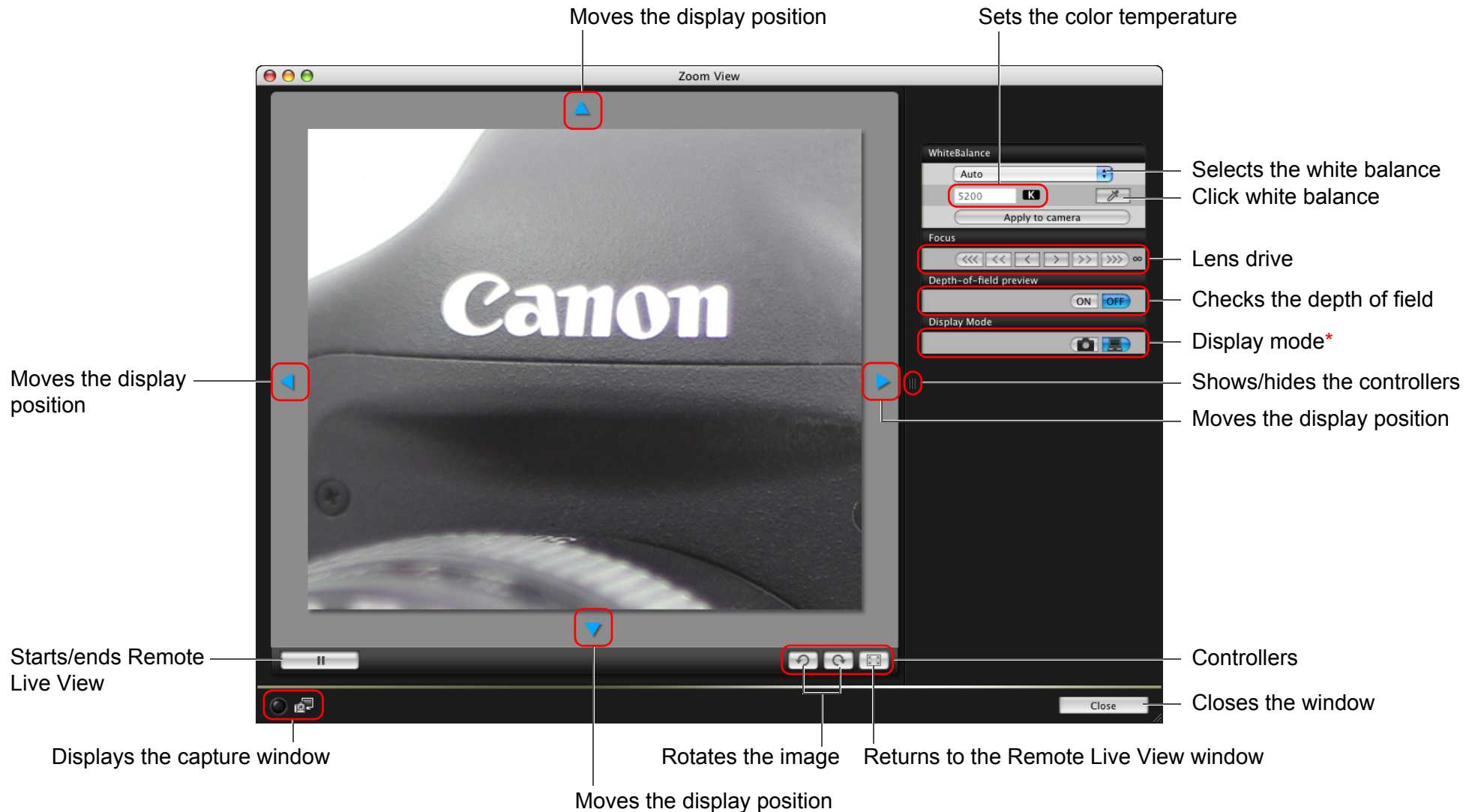
Preferences



Reference

Index



List of Zoom View Window Functions



* To focus while viewing on your camera's LCD monitor, click the [] button; to focus while viewing on your computer, click the [] button.

Introduction

Contents at a Glance

Downloading Images

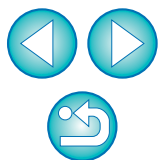
Camera Settings

Remote Shooting

Preferences

Reference

Index



Index

A

| | |
|---|----|
| Adjusting the Focus (Remote Live View Shooting)..... | 27 |
| Adjusting the Horizontal Alignment of the Camera (Remote Live View Shooting) | 29 |
| Adjusting the Vertical Alignment of the Camera (Remote Live View Shooting) | 29 |
| Adjusting the White Balance | 20 |
| Applying Personal White Balance | 19 |
| Applying Picture Style Files | 18 |
| Attaching the Cable Protector | 24 |

B

| | |
|------------------------------------|----|
| Basic Settings (Preferences) | 34 |
| Bulb Exposures..... | 32 |

C

| | |
|---|----|
| Capture Window | 45 |
| My Menu..... | 22 |
| Set-up Menu | 12 |
| Shooting Menu | 14 |
| Changing the Aspect Ratio (Remote Live View Shooting)..... | 30 |
| Changing the White Balance (Remote Live View Shooting)..... | 27 |
| Connecting the Camera to Your Computer..... | 5 |

D

| | |
|---|----|
| Destination Folder Settings (Preferences)..... | 34 |
| Download Images Settings (Preferences) | 35 |
| Downloading All the Images in a Single Operation..... | 6 |
| Downloading Images with a Card Reader | 9 |
| Downloading Selected Images | 7 |

E

| | |
|--|----|
| Enlarging an Image and Focusing (Remote Live View Shooting)..... | 28 |
|--|----|

F

| | |
|---------------------------------------|----|
| File Name Settings (Preferences)..... | 34 |
| Folder Structure and File Names | 41 |

| | |
|--|----|
| Folder Structure and File Names in the Memory Card | 41 |
| Function for Use with WFT-E2/E2A..... | 39 |
| Function for use with Wireless File Transmitter WFT-E2/E2A | 39 |

I

| | |
|-------------------------------|----|
| Interval Timer Shooting | 31 |
|-------------------------------|----|

L

| | |
|---|----|
| Linked Software Settings (Preferences)..... | 35 |
|---|----|

M

| | |
|-------------------------------|--------|
| Main Window | 42 |
| My Menu (Capture Window)..... | 22 |
| My Menu Settings..... | 21 |
| My Menu Settings Window | 22, 44 |

Q

| | |
|--------------------------------|---|
| Quitting the EOS Utility | 9 |
|--------------------------------|---|

R

| | |
|--|--------|
| Remote Live View Shooting | 25 |
| Adjusting the Focus | 27 |
| Adjusting the Horizontal Alignment of the Camera | 29 |
| Adjusting the Vertical Alignment of the Camera | 29 |
| Changing the Aspect Ratio | 30 |
| Changing the White Balance | 27 |
| Enlarging an Image and Focusing | 28 |
| Shooting by Operating the Camera | 30 |
| Remote Live View window..... | 26, 46 |
| Remote Shooting Settings (Preferences)..... | 35 |

S

| | |
|--|----|
| Setting JPEG Quality | 20 |
| Setting Picture Styles | 15 |
| Setting the Camera Owner's Name..... | 11 |
| Setting the Camera's Date and Time | 11 |
| Set-up Menu (Capture Window)..... | 12 |
| Shooting by Operating the Camera (Remote Live View Shooting) | 30 |
| Shooting Menu (Capture Window) | 14 |

Introduction

Contents at
a Glance

Downloading
Images

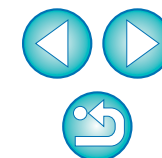
Camera
Settings

Remote
Shooting

Preferences

Reference

Index



| | |
|-----------------------------------|--------|
| Specifying Preferences | 34 |
| Basic Settings..... | 34 |
| Destination Folder Settings | 34 |
| Download Images Settings..... | 35 |
| File Name Settings | 34 |
| Linked Software Settings..... | 35 |
| Remote Shooting Settings..... | 35 |
| Starting up EOS Utility | 5 |
| Supported Camera..... | 2 |
| Supported Images..... | 2 |
| System Requirements..... | 2 |
| T | |
| Timer Shooting..... | 31 |
| U | |
| Uninstalling the Software | 41 |
| V | |
| Viewer Window | 8, 43 |
| Z | |
| Zoom View Window | 28, 47 |

About This Instruction Manual

- It is prohibited to reproduce, in whole or part, the contents of this Instruction Manual without permission.
- Canon may change without notice the software specifications and contents of this Instruction Manual.
- The software screens and displays printed in this Instruction Manual may differ slightly from the actual software.
- The content of this Instruction Manual has been reviewed thoroughly. However, if you should notice any errors or omissions, please contact a Canon Service Center.
- Please note that irrespective of the above-mentioned, Canon does not take responsibility for the outcome of the operation of the software.

Trademark Acknowledgments

- Macintosh is trademark of Apple Computer Inc., registered in the United States and other countries.
- Other names and products not mentioned above may be registered trademarks or trademarks of their respective companies.

Introduction

Contents at
a Glance

Downloading
Images

Camera
Settings

Remote
Shooting

Preferences

Reference

Index

