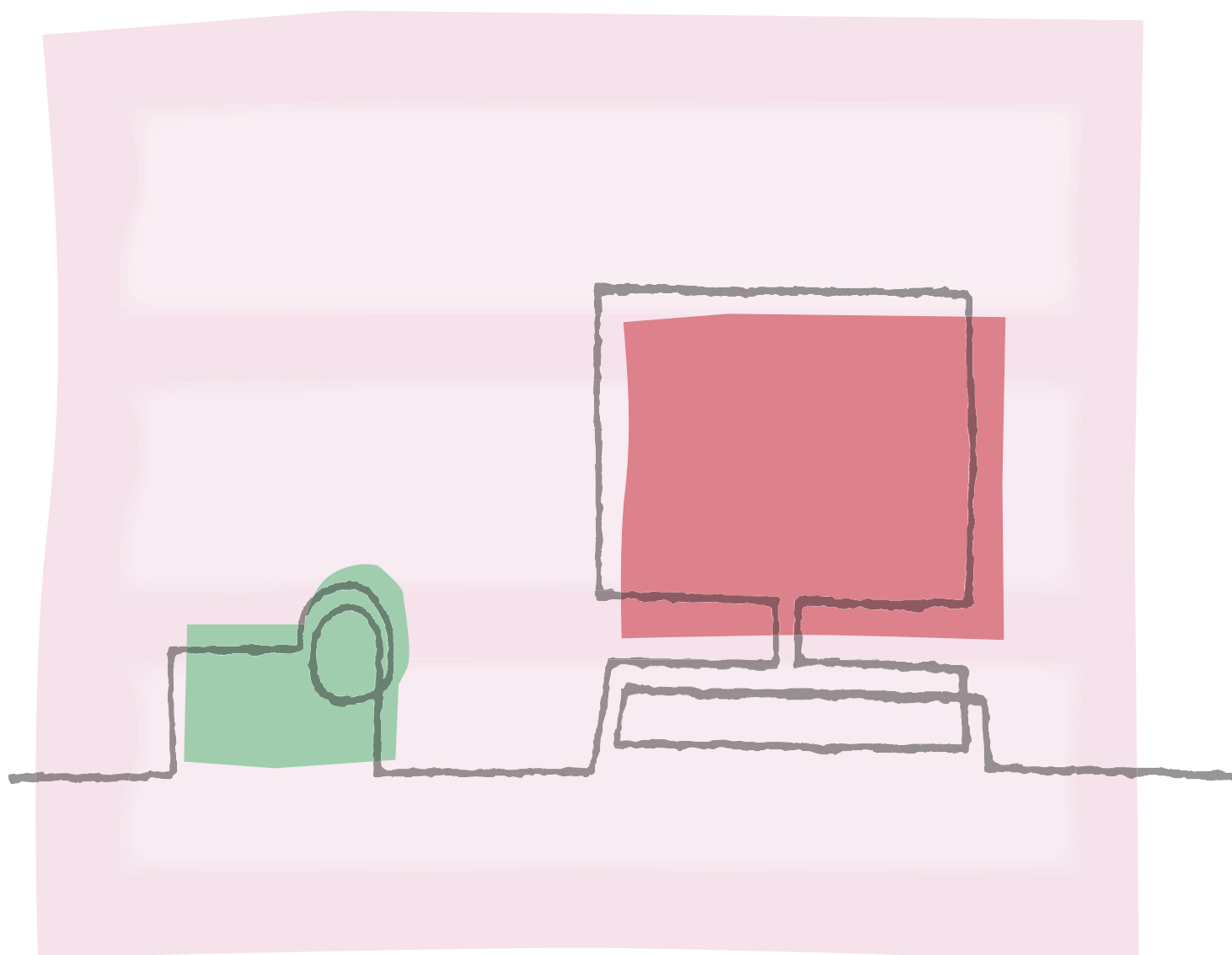




# Backup Utility

Instruction Manual



Version 1.0

# Backup Utility

You can use **Backup Utility** to easily back up onto a computer all the video data on your camcorder's hard disk or to transfer backed up data back to the camcorder. Making regular backups allows you to protect your important recordings in case of damage to the camcorder's hard disk, which may also lead to permanent data loss.

## Back Up Data

Back up onto a computer all the video data on your camcorder's hard disk.

## Transfer Back Data

Transfer back to the camcorder video data that has already been backed up in order to play back the recordings. Make sure to initialize the camcorder's hard disk before transferring data back.

# System Requirements

The following table gives the recommended system configuration for the software. The software may not work correctly depending on the specifications and settings of your computer and other software already installed.

### Recommended System Configuration for Backup Utility

Operating System	Microsoft Windows XP SP2	Microsoft Windows Vista (32-bit version only)
CPU	Intel Pentium 4, 1.6 GHz	Intel Pentium 4, 2.4 GHz
RAM	512 MB	1 GB
Available Hard Disk Space	Same hard disk space as the amount of data to be backed up	
Interface	USB 2.0 (Hi-Speed USB)*	

\* Only computers with a preinstalled version of the OS indicated.

### IMPORTANT

When the camcorder's hard disk contains a large amount of video data, the time required to back up or transfer back data may be over 30 minutes for each procedure.

---

## Preparing to Use the Software

Turn on the computer and start Windows. Before you use this software, copy **Backup Utility** and instruction manual to your computer.

- 1 Insert the Backup Utility CD-ROM into the computer's CD or DVD drive.**
- 2 From Computer (in Windows Vista) or My Computer (in Windows XP), double-click the icon of the drive in which you inserted the disc.**
- 3 Double-click [English].**
- 4 Copy the folder [HGBACKUP] to your computer's desktop.**

---

## Connecting the Camcorder to the Computer

Connect the camcorder to the computer to back up your video data or to transfer it back to the camcorder.

- 1 Connect the camcorder to a power outlet.**  
Insert a fully charged battery pack and power the camcorder using the compact power adapter.
- 2 Turn on the camcorder and set it in video playback mode.**  
Refer to the camcorder's instruction manual.
- 3 Connect the camcorder to the computer using the USB cable.**

---

## IMPORTANT

Do not disconnect the camcorder's power source or USB cable while using this software. Doing so may result in damage to the camcorder's hard disk and/or permanent data loss. Insert a fully charged battery pack into the camcorder in advance and use the compact power adapter. Do not allow the USB cable to be inadvertently disconnected. Before disconnecting the USB cable, use the "Safely Remove Hardware" icon in the System Tray to end the connection.

---

## Starting Backup Utility

The first time you use this software, make sure to read the license agreement.

- 1 Open the desktop folder [HGBACKUP].**

- 2 Double-click the icon [HGBACKUP.exe].**

If this is the first time you are using this software, the license agreement will appear. Continue to step 3. If you have already agreed to the license agreement, the main menu will appear. Skip directly to the section corresponding to the desired function in the main menu.

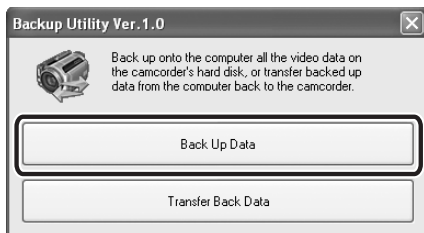
- 3 Read the license agreement and select [I agree].**

The main menu will appear.

## Backing Up the Camcorder's Video Data

Back up onto the computer all of the movies on the camcorder's built-in hard disk. We recommend backing up your movies regularly.

### 1 Start Backup Utility and click [Back Up Data].



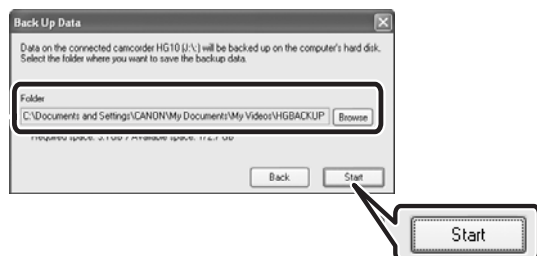
### 2 Select the folder where you want to back up the data and click [Start].

Backup will start. A folder is created whose name reflects the date and time (in 24-hour format) of the backup. For example, the folder name of a backup made around 9 p.m. on October 25 will be:

20071025212030

YYYYMMDDhhmmss

- The required space and available space are displayed. If there is not enough available space, [Start] will be grayed out.



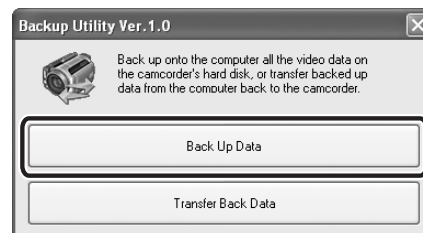
### 3 Once backup is completed, click [OK].



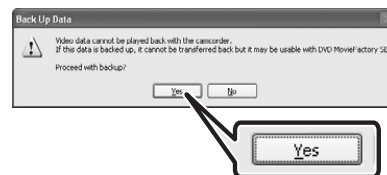
## BACKING UP MOVIES THAT DO NOT PLAY BACK CORRECTLY

If movies that do not play back correctly on the camcorder are backed up, DVD MovieFactory SE may be able to read them. If the movies can be read, you can use DVD MovieFactory SE to create a high-definition AVCHD disc or standard definition DVD disc.

### 1 Start Backup Utility and click [Back Up Data].



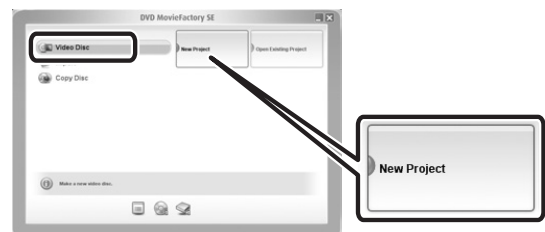
### 2 Click [Yes] and back up the camcorder's video data.



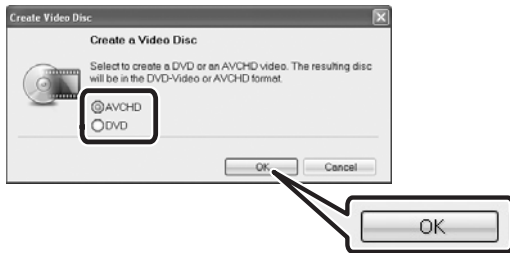
### 3 Start DVD MovieFactory SE.

### 4 From the Start menu, select [All Programs] and then [Corel Applications], and click [Ulead DVD MovieFactory 5.6 Launcher].

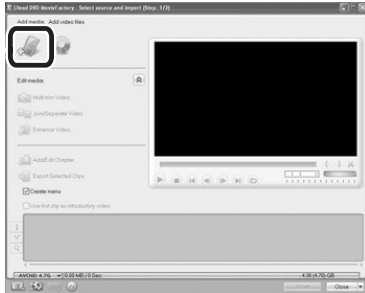
### 5 Click [Video Disc] and then [New Project].



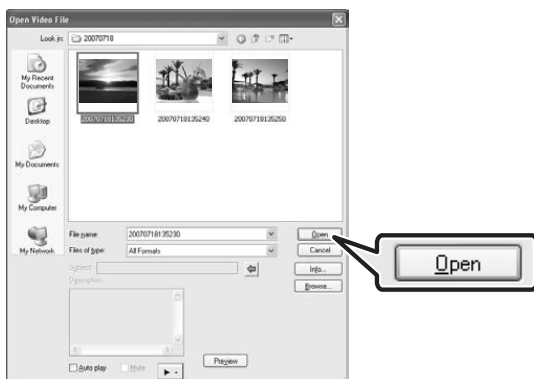
- 6 Select the disc type and click [OK].



- 7 Click the  icon.



- 8 Select the folder you backed up the movies to in step 2.
- 9 Select the files to add to the disc and click [Open].



- You can preview files by selecting a file and clicking [Preview].
- You can select multiple files by pressing and holding the Shift key or Ctrl key while making selections.

- 10 Follow the instructions in the **Corel Application Disc Installation Guide and User Manual**.

Refer to step 10 and subsequent steps of *Creating an AVCHD Disc or a DVD-Video Disc* in the **Corel Application Disc Installation Guide and User Manual**.

---

## Transferring Video Data Back to the Camcorder

After you have backed up onto the computer all of the movies on the camcorder's hard disk, you can transfer those movies back to the camcorder. After doing so, the movies in the camcorder will be the same as when they were backed up.

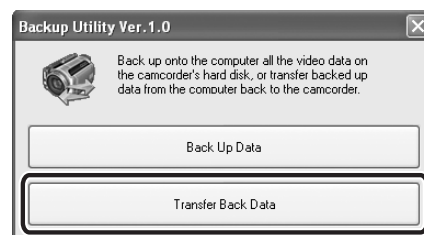
- 1 **Initialize the camcorder's hard disk.**

Refer to *Initializing the Hard Disk* in the camcorder's instruction manual.

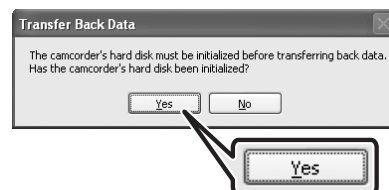
- 2 **Connect the camcorder to the computer.**

Refer to *Connecting the Camcorder to the Computer* (3).

- 3 **Start Backup Utility and click [Transfer Back Data].**

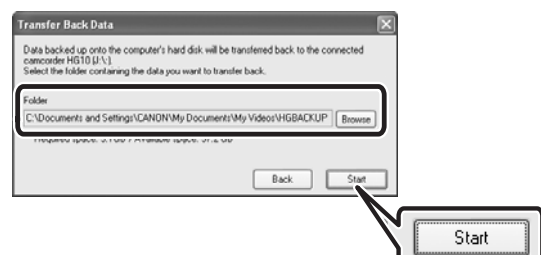


- 4 **Click [Yes].**



- 5 **Select the folder that contains the backup data to transfer back and click [Start].**

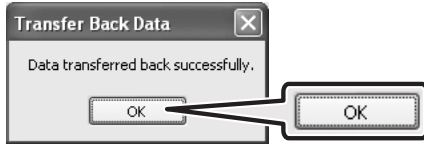
Data transfer will start.



**6 Once transfer is finished, click [OK].**

You can connect the camcorder to a TV to play back your recordings.

Make sure to initialize the camcorder's hard disk before making additional recordings.





## **CANON INC.**

<b>U.S.A.</b> —————	<b>Canon U.S.A., Inc.</b> Canon Customer Care Center Tel (US): 1-800-828-4040 (Mon.-Fri., 9 AM to 8 PM Eastern Time)
<b>CANADA</b> —————	<b>Canon CANADA Inc.</b> Tel (Canada): 1-800-OK-CANON (1-800-652-2666)
<b>ASIA</b> —————	<b>Canon Hongkong Co., Ltd.</b> 19/F., The Metropolis Tower, 10 Metropolis Drive, Hung Hom, Kowloon, Hong Kong Phone: 852-2170-2828 Fax: 852-2723-9684

## **Trademark Acknowledgements**

- Corel, the Corel logo, Ulead, the Ulead logo, Ulead DVD MovieFactory, InterVideo, the InterVideo logo, WinDVD are trademarks or registered trademarks of Corel Corporation and its subsidiaries.
- Microsoft, Windows and Windows Vista are trademarks or registered trademarks of Microsoft Corporation in the United States and/or other countries.
- “AVCHD” and the “AVCHD” logo are trademarks of Matsushita Electric Industrial Co., Ltd. and Sony Corporation.
- Other names and products not mentioned above may be trademarks or registered trademarks of their respective companies.

The information in this manual is verified as of 1 August 2007.