

**English**

Installation Guide and User's Manual

**Français**

Guide d'installation et manuel d'utilisateur

**Español**

Guía de instalación y manual del usuario

**NTSC**

# Corel Application Disc

Version 1

# Corel Application Disc - Movie Playback and Editing and Various Disc Operations

The **Corel Application Disc** CD-ROM includes software that will allow you to play back movies (SD or HD quality), transfer movies to a computer and easily edit them, make copies of your disc or create (author) new personalized discs, and more. For further details, refer to the help files of each program.



## GuideMenu - Disc Copy and Backup ( 7 )

- Make copies of your disc onto standard-sized DVD discs.
- Make copies of your discs that will play on most DVD players to share with family and friends.
- Save backup copies of your video recordings on a computer.

## DVD MovieFactory SE - Video Editing and DVD Authoring ( 9 )

- Touch up your videos by cutting, deleting and moving scenes.
- Add music, titles and transition effects.
- Create your own personalized DVD menus.

Start the program by selecting [Authoring] in the GuideMenu screen. For further details, refer to the help files of the program.



## WinDVD SE - DVD Playback ( 10 )

- Play back your discs, either standard-definition DVD discs or high-definition AVCHD discs.
  - Play back video files saved on the computer using GuideMenu.
- For further details, refer to the help files of the program.

### For support concerning Corel Application Disc

Please call one of the customer support centers or access the support services online (details on the back cover). Canon-related customer support centers cannot provide support regarding software in the **Corel Application Disc** CD-ROM.

# 1 System Requirements

System requirements will vary based on the applications and features you choose to install. The applications may not work correctly depending on the specifications and settings of your computer and the software already installed.

**Make sure you have a valid Internet connection. You will not be able to use the software without successfully completing the user registration.**

## Recommended System Configuration\* for Corel Application Disc

Operating System	Windows XP SP2	Windows Vista
CPU	Intel Core 2 Duo 1.86 GHz / Intel Pentium D 3.2 GHz	
RAM	1 GB	2 GB
Available Hard Disk Space	Installation only: At least 1 GB Disc authoring: At least twice the amount of data to be recorded on the disc**	
Graphic Accelerator	NVIDIA GeForce 6600, 128 MB / ATI Radeon X700 Series, 128 MB	
Monitor/Display	1024 x 768 color display with 16-bit color video card	
Others	DVD drive with writing capabilities compatible with DVD-R/DVD-RW discs, Internet connection (required for user registration)	

## Minimum Configuration\* Required for the “Copy to Disc” , “Save Files to PC” Options (GuideMenu)

Operating System	Windows XP SP2	Windows Vista
CPU	Intel Pentium 4, 1.6 GHz	Intel Pentium 4, 2.4 GHz
RAM	512 MB	1 GB
Available Hard Disk Space	At least 3 GB (“Save Files to PC” only)	
Others	DVD drive with writing capabilities compatible with DVD-R/DVD-RW discs	

\* Equivalent or better configurations can be used instead.

\*\* For a full, standard-size (12 cm) DVD-R/DVD-RW - at least 10 GB.

# 2 Software Installation

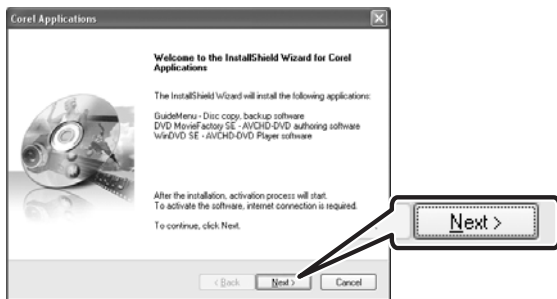
Turn on the computer and start Windows. Check that the camcorder is not connected to the computer.

## 1 Insert the Corel Application Disc CD-ROM into the computer's CD or DVD drive.

The InstallShield Wizard will launch automatically.

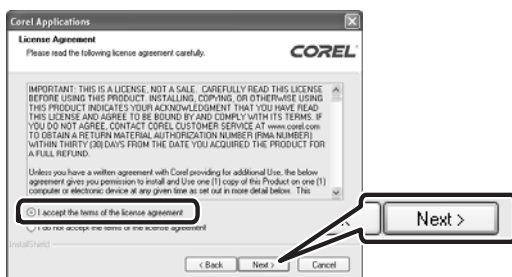
## 2 Select the language for the installation from the drop-down menu and click [OK].

## 3 Click [Next].



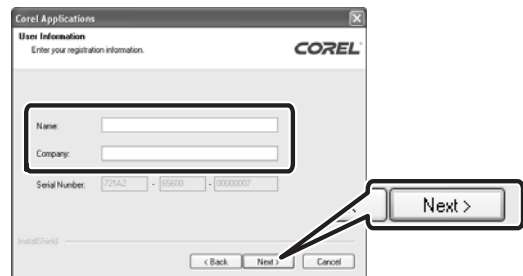
## 4 Read the license agreement and click [Next].

Select [I accept the terms of the license agreement] to continue.

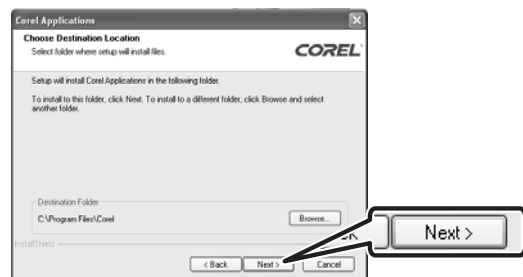


## 5 Enter the user information and click [Next].

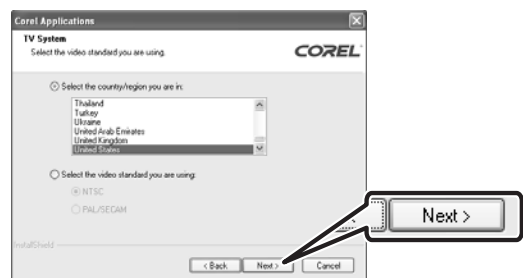
Enter your name and (optionally) your company affiliation.



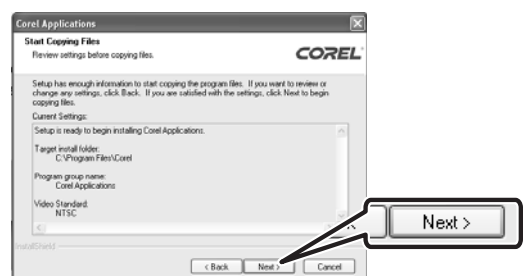
## 6 Check the destination folder for the files and click [Next].



## 7 Select your country/region of residence and the local video standard and click [Next].



## 8 Review the installation settings and click [Next] to start copying the files.



# 3 User Registration

After the installation files have been copied, connect to the Internet to complete the user registration online. You will not be able to use the software without successfully completing the user registration.

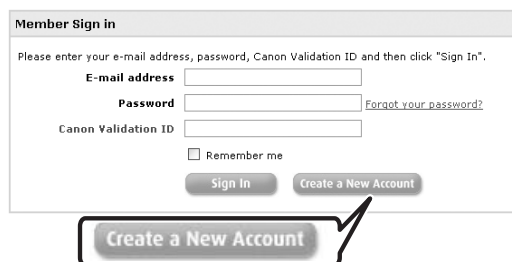
During the user registration, leave the **Corel Application Disc** CD-ROM in the computer.

## 1 Click on the link to get the activation code.

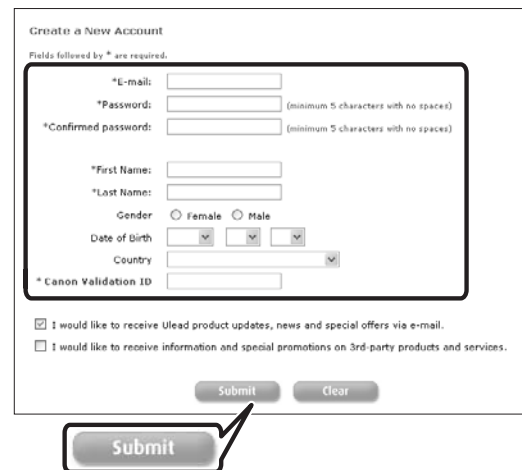


## 2 Click [Create a New Account] to create a new Ulead member account.

If you have already registered as a Ulead member, continue directly to step 4.



## 3 Enter the user information and click [Submit] to register the account.

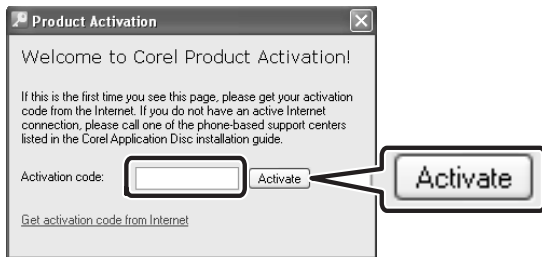


## 4 Enter your Ulead member account's e-mail address and password, and the Canon Validation ID. Click [Sign In].

- The Canon Validation ID is the camcorder's serial number. To find its location, refer to the camcorder's instruction manual.
- After you sign-in, you will receive a serial number that serves as the activation code.



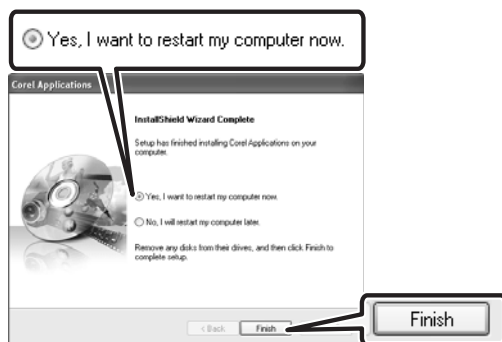
- 5 Enter the activation code (serial number) you received over the Internet and click [Activate].



- 6 Once the activation is completed, click [OK].



- 7 Select [Yes, I want to restart my computer now.] and click [Finish].



#### IF YOU CANNOT CONNECT TO THE INTERNET

- 1 Call one of the customer support centers listed on the back cover to get the activation code over the phone.
- 2 Skip directly to step 5 to enter the activation code and continue with the procedure as described.

## Connecting the Camcorder to the Computer

Connect the camcorder to the computer to make copies of the disc or back up your files on the hard disk. To play back movies (WinDVD SE) or edit movies (DVD MovieFactory SE), you can also insert a finalized disc directly into the computer's DVD drive without having to connect the camcorder. For further details, refer to the help files in the respective software.

- 1 **Connect the camcorder to a power outlet.**

Power the camcorder using the compact power adapter.

- 2 **Turn on the camcorder and set it in video playback mode.**

Refer to the camcorder's instruction manual.

- 3 **Connect the camcorder to the computer using the USB cable.**

The GuideMenu screen will appear automatically.

#### IF THE GUIDEMENU SCREEN DOES NOT APPEAR

Double-click the desktop icon  to launch the GuideMenu application.

## GuideMenu - Disc Copy and Backup

Note that only the following discs can be used with GuideMenu:

**Source disc** - Discs recorded and finalized with this camcorder.

**Copy disc** - Standard-size (12 cm) DVD-R or DVD-RW discs. DVD-R DL and 8 cm discs cannot be used for the copies.

### Making Copies of the Disc

You can make exact copies of your discs onto standard-sized DVD-R or DVD-RW discs. Refer also to the computer's instruction manual as necessary.

**1 Camcorder: Insert the disc you want to copy.**

Insert a finalized disc.

**2 Computer: Insert a standard-size (12 cm) DVD disc into the DVD drive.**

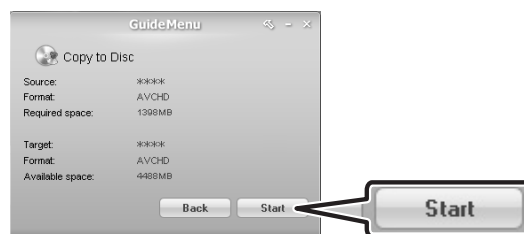
If the source disc is a DVD-RW recorded in VR mode, be sure to use a DVD-RW disc for the copy as well. Otherwise, you can use either a DVD-RW or a brand new DVD-R disc.

**3 Click [Copy to Disc].**



**4 Select the DVD drive as the target device and click [Next].**

**5 Verify that the information is correct and click [Start].**



**6 When the disc copy is completed successfully, click [OK].**

### ! IMPORTANT

High-definition discs created or copied using Corel software can be played back only with AVCHD-compatible DVD players. Do not insert such discs into a DVD player that is not compatible with AVCHD specifications as you may not be able to eject the disc.

### Making Copies to Share with Family and Friends

Copy your discs and at the same time convert discs recorded in HD quality or in VR mode to DVD-VIDEO specifications. This ensures that the copies can be played back with most DVD players, making this option very convenient when you want to give away copies of your disc to family and friends without worrying about the compatibility of their DVD players.

**1 Camcorder: Insert the disc you want to convert and copy.**

Insert a finalized disc.

**2 Computer: Insert a standard-size (12 cm) DVD disc into the DVD drive.**

You can use either a DVD-RW or a brand new DVD-R disc.

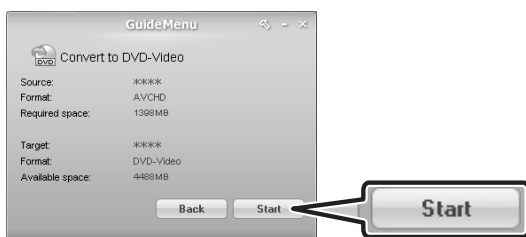


### 3 Click [Convert to DVD-Video].



### 4 Select the computer's DVD drive as the target device and click [Next].

### 5 Verify that the information is correct and click [Start].



### 6 When the disc conversion and copy is completed successfully, click [OK].

## **i** NOTES

- Depending on the length of the recordings on the source disc, the conversion process may take some time.
- When recordings are converted into DVD-VIDEO specifications, several scenes will be merged into one scene.
- When a disc recorded in VR mode (standard definition) is converted to DVD-VIDEO specifications, all the scenes will have the same aspect ratio (16:9 or 4:3) as the first scene on the disc.

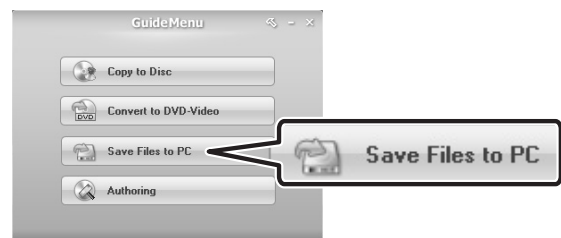
## Backing Up your Video Recordings

Transfer the movies you recorded from a disc to the computer's hard disk and save them as backup files.

### 1 Camcorder: Insert the disc containing the scenes you want to backup.

Insert a finalized disc.

### 2 Click [Save Files to PC].



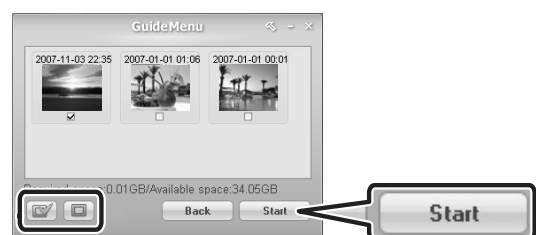
### 3 Select the folder where you want to save the files and click [Next].

Select a folder on the computer's built-in hard disk.



### 4 Select the scenes you want to save and click [Start].

- You can also click on the following buttons.
  - ☒ : Select all scenes at once.
  - ☐ : Remove the checkmarks from all selected scenes at once.
- If there are less than 3 GB of available hard disk space, the backup operation will not start.
- It may take some time to display all the scenes' thumbnails.





## 5 When the files have been saved successfully, click [OK].

### IMPORTANT

If a folder on an external hard disk drive is selected, the message “Delayed Write Failed” may appear and you may not be able to save the files.

### NOTES

- The file name of scenes saved on the hard disk reflects the date and time (in 24-hour format) of the original recordings. For example, the file name of a recording made around 9 p.m. on November 3 will be:  
20071103212030.m2ts (HD scene)  
20071103212030.mpg (SD scene)  
YYYYMMDDhhmmss
- Unless you select a different folder in step 3, scenes will be saved in folders that reflect the date of recording under the **My Videos** folder in the **My Documents** folder.  
The exact path is different for each system but a typical path for the scene on the previous example would be:  
C:\Documents and Settings\  
[User name]\My Documents\  
My Videos\20071103

## Additional Software in the Corel Application Disc CD-ROM

### Editing Movies with DVD MovieFactory SE

Use this editing software to touch up your videos (cut, delete and move scenes), to add music, titles and transition effects and to create your own DVDs with personalized menus. For further details, refer to the help files in the DVD MovieFactory SE software. Note that only the following movies can be edited:

**Discs** - Scenes from discs recorded and finalized with this camcorder.

**Movie Files** - Files that were saved on the computer using “Save Files to PC” (GuideMenu).

### IMPORTANT

- High-definition discs created or copied using Corel software can be played back only with AVCHD-compatible DVD players. Do not insert such discs into a DVD player that is not compatible with AVCHD specifications as you may not be able to eject the disc.
- When using a computer that has only one DVD drive to read and write data, you will be able to use only DVD-RW discs; DVD-R and DVD-R DL discs cannot be copied in such case.

### NOTES

- If you include in a disc scenes that were not recorded with this camcorder, or mix high-definition and standard-definition scenes on the same disc, the disc may not be played back correctly.

- If you have the editing software Roxio MyDVD for Canon installed in your computer, you will not be able to burn the disc if more than one copy is selected in the [Copies:] option. In such case, burn only one copy at a time.

### Playing Back Movies with WinDVD SE

Play back your discs and video files saved on the computer (HD or SD quality). For further details, refer to the help files in the WinDVD SE software. Note that only the following movies can be played back:

#### **Discs -**

Discs recorded and finalized with this camcorder.

Discs created using GuideMenu or DVD MovieFactory SE.

**Movie Files** - Files that were saved on the computer using "Save Files to PC" (GuideMenu).

#### **NOTES**

- Depending on the type of disc and the configuration of your computer, the processor may be overloaded and you may notice some anomalies such as video stuttering or audio drop-outs. Playback of discs recorded in high definition requires higher CPU resources. Close all running programs before starting the playback.
- **Regarding the playback of AVCHD discs:** You can play back discs recorded using this camcorder and discs created using GuideMenu or DVD MovieFactory SE. Correct playback cannot be guaranteed when playing back AVCHD discs recorded or created using other devices/software.
- Correct playback of AVCHD discs created using the supplied software cannot be guaranteed for all AVCHD-compatible devices.

- Discs created with DVD MovieFactory SE: Can be played back using WinDVD SE or the camcorder.
- Discs created with GuideMenu: Can be played back using WinDVD SE.

- **For Windows Vista users:** Depending on the configuration of your computer, playback quality may be affected by whether the Windows Aero graphic interface is activated or not. If you experience some anomalies during playback even though your computer complies with the system requirements, try turning the Windows Aero function on or off.
- Playback quality may be affected by the power saving mode of the operating system or the video card. If you are using a laptop computer, try connecting it directly to a power outlet.
- This program cannot be used to play back CPRM-protected discs.

### IF A DISC CREATED WITH DVD MOVIEFACTORY SE CANNOT BE PLAYED BACK CORRECTLY

If you play back a high-definition disc created with DVD MovieFactory SE on an external AVCHD-compatible DVD device you may notice that the video freezes for a few seconds between scenes. In such case, perform the following procedure to create a new disc where all video is read as one continuous scene.

- 1 After adding the scenes you want to include in the disc, select the first scene.**
- 2 Press and hold the Shift key and select the last scene.**

- 3 With all the scenes selected, click **[Join Video]**.



- 4 Click **[Add/Edit Chapter]**.
- 5 Click **[Remove All Chapters]** and click **[OK]**.  
All the scenes will be combined into one scene and will appear as a single scene when playing back the disc.

#### **IF DVD MOVIEFACTORY SE OR WINDVD SE ARE NOT WORKING CORRECTLY**

If you have the editing software Roxio MyDVD for Canon installed in your computer, DVD MovieFactory SE or WinDVD SE may not work correctly. In such case, follow the procedure below to solve the compatibility problem.

- 1 **Connect the camcorder to the computer.**
  - This step is not necessary if you want to play back or edit video directly from a finalized disc in the computer's DVD drive.
  - Close any running Corel applications before continuing.
- 2 **From the Start menu, open [My Computer].**
- 3 **Right-click on the icon of the DVD drive, and select [Properties].**
- 4 **Select the [UDF Reader] tab and remove the check mark from the [Enable UDF Reader on your drives] option.**
- 5 **Click [Apply], then click [OK].**
- 6 **Start the Corel software.**

## **Trademark Acknowledgements**

- Corel, the Corel logo, Ulead, the Ulead logo, Ulead DVD MovieFactory, InterVideo, the InterVideo logo, WinDVD are trademarks or registered trademarks of Corel Corporation and its subsidiaries.
- Microsoft, Windows and Windows Vista are trademarks or registered trademarks of Microsoft Corporation in the United States and/or other countries.
- “AVCHD” and the “AVCHD” logo are trademarks of Matsushita Electric Industrial Co., Ltd. and Sony Corporation.
- Other names and products not mentioned above may be trademarks or registered trademarks of their respective companies.

## **Marques de commerce et marques déposées**

- Microsoft, Windows et Windows Vista sont des marques déposées ou des marques enregistrées de Microsoft Corporation aux Etats-Unis d’Amérique et/ou dans d’autres pays.
- “AVCHD” et le logo “AVCHD” sont des marques de commerce de Matsushita Electric Industrial Co., Ltd. et Sony Corporation.
- Les autres noms de produits non mentionnés ci-dessus peuvent être des marques de commerce ou des marques déposées de leur compagnie respective.

## **Reconocimiento de marcas comerciales y registradas**

- Microsoft, Windows® y Windows Vista son marcas comerciales de Microsoft Corporation, registradas en los Estados Unidos y/o en otros países.
- “AVCHD” y el logotipo “AVCHD” son marcas comerciales de Matsushita Electric Industrial Co., Ltd. y Sony Corporation.
- Otros nombres y productos no mencionados anteriormente pueden ser marcas comerciales o registradas de sus respectivas compañías.

  
DIM-823

---

# Corel Application Disc

## Global Support Information

The product activation website includes links to FAQ and Knowledge Base resources as well.

## Informations d'aide à l'utilisateur

Le site d'activation du produit comprend des liens vers le fichier des questions courantes (FAQ) et une base de connaissances.

## Información sobre soporte global

El sitio Web de la activación del producto también incluye enlaces a recursos como preguntas y respuestas y base de conocimientos.

**<http://www.ulead.com/events/canon/runme.htm>**

## 1-510-979-7118

USA: Monday – Friday, 9:30 a.m. – 5:30 p.m. PST)

États-Unis d'Amerique : lundi-vendredi, 9.30 a.m. - 5.30 p.m. HNP

EE.UU.: Lunes a viernes, 9.30 a.m. - 5.30 p.m. PST)

## +44 (0)1628 58 1601

International support in the UK: Monday – Friday, 9 a.m. – 5 p.m. GMT

Assistance internationale au Royaume-Uni : lundi-vendredi, 9 a.m. - 5 p.m. GMT

Soporte internacional en el Reino Unido: Lunes a viernes, 9 a.m. - 5 p.m. GMT

---

Printed on 100% reused paper.

Document réalisé avec du papier recyclé à 100%.

Impreso en papel 100% reciclado.

---