

English

Installation Guide and User's Manual

Français

Guide d'installation et manuel d'utilisateur

Español

Guía de instalación y manual del usuario

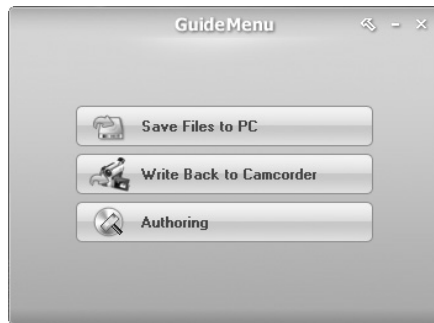
**NTSC**

Corel Application Disc

Version 2

Corel Application Disc - Movie Backup, Playback, Editing and Transfer

The **Corel Application Disc** CD-ROM includes software that will allow you to back up or play back movies, transfer movies to a computer and easily edit them, and more. For further details, refer to the help files of each program.



GuideMenu - Movie Backup and Transfer (📖 7)

- Save backup copies of your video recordings on a computer.
- Transfer movies from the computer back to the camcorder and play them back with the camcorder.

DVD MovieFactory SE - Video Editing and DVD Authoring (📖 10)

- Touch up your videos by cutting, deleting and moving scenes.
- Add music, titles and transition effects.
- Create your own personalized DVD menus.

Start the program by selecting [Authoring] in the GuideMenu screen. For further details, refer to the relevant sections in this manual and the help files of the program.



WinDVD SE - Movie Playback (📖 13)

- Play back your discs, either standard-definition DVD discs or high-definition AVCHD discs.
 - Play back video files saved on the computer using GuideMenu.
- For further details, refer to the help files of the program.

For support concerning Corel Application Disc

Please call one of the customer support centers or access the support services online (details on the back cover). Canon-related customer support centers cannot provide support regarding software in the **Corel Application Disc** CD-ROM.

1 System Requirements

System requirements will vary based on the applications and features you choose to install. The applications may not work correctly depending on the specifications and settings of your computer and the software already installed.

Make sure you have a valid Internet connection. You will not be able to use the software without successfully completing the user registration.

Recommended System Configuration* for Corel Application Disc

| | | |
|---------------------------|---|-------------------------|
| Operating System | Microsoft Windows XP SP2 | Microsoft Windows Vista |
| CPU | Intel Core 2 Duo 1.86 GHz / Intel Pentium D 3.2 GHz | |
| RAM | 1 GB | 2 GB |
| Available Hard Disk Space | Installation only: At least 1 GB Disc authoring: At least twice the amount of data to be recorded on the disc (for a full standard-size (12 cm) DVD-R/DVD-RW - at least 10 GB) | |
| Graphic Accelerator | NVIDIA GeForce 6600, 128 MB / ATI Radeon X700 Series, 128 MB | |
| Monitor/Display | 1024 x 768 color display with 16-bit color video card | |
| Others | DVD drive with writing capabilities compatible with DVD-R/DVD-RW discs, Internet connection (required for user registration) | |

Minimum Configuration* Required for the “Save Files to PC”, “Write Back to Camcorder” Options (GuideMenu)

| | | |
|---------------------------|--|--------------------------|
| Operating System | Microsoft Windows XP SP2 | Microsoft Windows Vista |
| CPU | Intel Pentium 4, 1.6 GHz | Intel Pentium 4, 2.4 GHz |
| RAM | 512 MB | 1 GB |
| Available Hard Disk Space | At least 3 GB (“Save Files to PC” only)** | |
| Others | DVD drive with writing capabilities compatible with DVD-R/DVD-RW discs | |

* Equivalent or better configurations can be used instead.

**The available hard disk space required will vary depending on the amount of data being backed up.

2 Software Installation

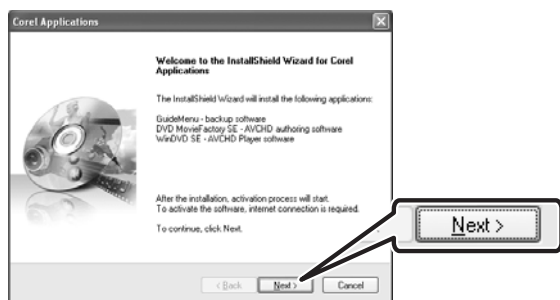
Turn on the computer and start Windows. Check that the camcorder is not connected to the computer.

1 Insert the Corel Application Disc CD-ROM into the computer's CD or DVD drive.

The InstallShield Wizard will launch automatically.

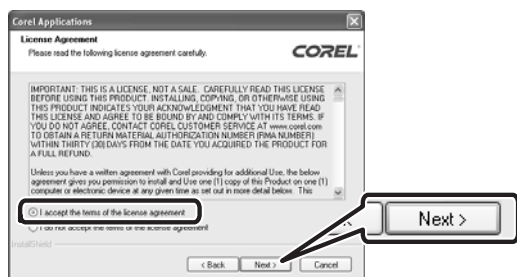
2 Select the language for the installation from the drop-down menu and click [OK].

3 Click [Next].



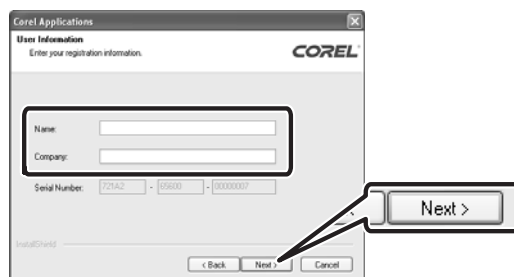
4 Read the license agreement and click [Next].

Select [I accept the terms of the license agreement] to continue.

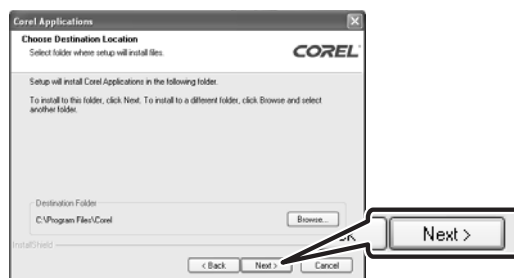


5 Enter the user information and click [Next].

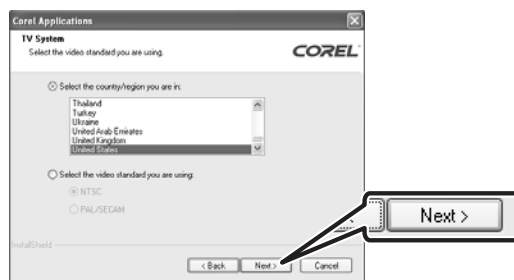
Enter your name and (optionally) your company affiliation.



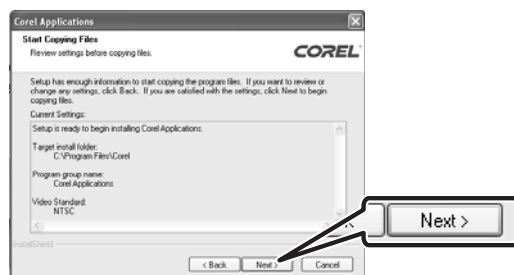
6 Check the destination folder for the installation files and click [Next].



7 Select your country/region of residence or the local video standard and click [Next].



8 Review the installation settings and click [Next] to start copying the files.

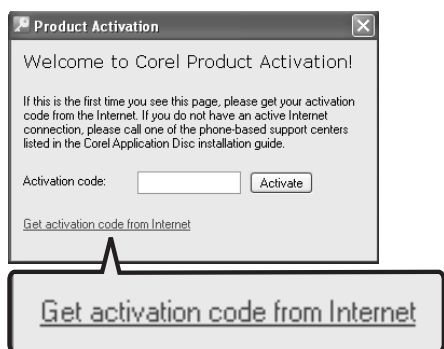


3 User Registration

After the installation files have been copied, connect to the Internet to complete the user registration online. You will not be able to use the software without successfully completing the user registration.

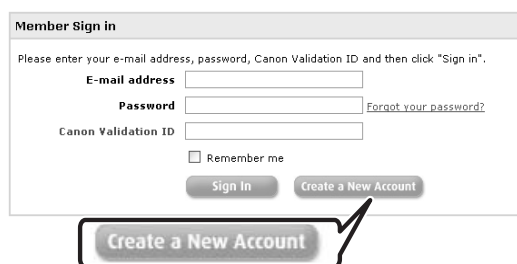
During the user registration, leave the **Corel Application Disc** CD-ROM in the computer.

1 Click on the link to get the activation code.

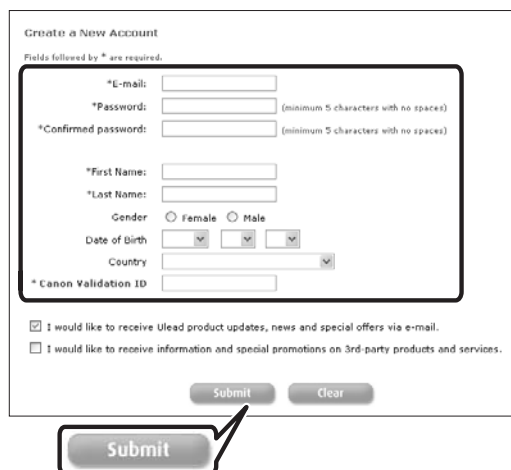


2 Click [Create a New Account] to create a new Ulead member account.

If you have already registered as a Ulead member, continue directly to step 4.



3 Enter the user information and click [Submit] to register the account.

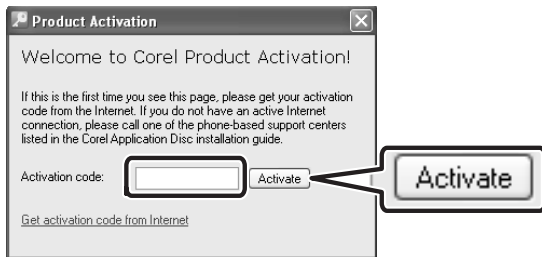


4 Enter your Ulead member account's e-mail address and password, and the Canon Validation ID. Click [Sign In].

- The Canon Validation ID is the camcorder's serial number. To find its location, refer to the camcorder's instruction manual.
- After you sign-in, you will receive a serial number that serves as the activation code.



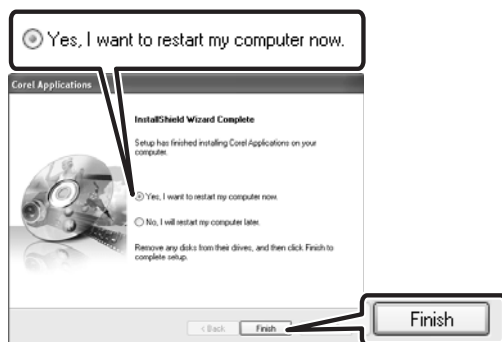
- 5 Enter the activation code (serial number) you received over the Internet and click [Activate].**



- 6 Once the activation is completed, click [OK].**



- 7 Select [Yes, I want to restart my computer now.] and click [Finish].**



IF YOU CANNOT CONNECT TO THE INTERNET

- 1 Call one of the customer support centers listed on the back cover to get the activation code over the phone.**
- 2 Skip directly to step 5 to enter the activation code and continue with the procedure as described.**

Connecting the Camcorder to the Computer

Connect the camcorder to the computer to back up your files on the camcorder's hard disk or transfer your recordings from the computer back to the camcorder. You can play back your recordings (using WinDVD SE) or edit your recordings (using DVD MovieFactory SE) directly from your computer's hard disk without having to connect the camcorder. For further details, refer to the help files in the respective software.


- 1 Connect the camcorder to a power outlet.**

Insert a fully charged battery pack into the camcorder and power the camcorder using the compact power adapter.

- 2 Turn on the camcorder and set it in video playback mode.**

Refer to the camcorder's instruction manual.

- 3 Connect the camcorder to the computer using the USB cable.**

- The GuideMenu screen will appear automatically.
- If it does not, double-click the desktop icon  to launch the GuideMenu application.

! IMPORTANT

- Do not disconnect the camcorder's power source or USB cable while using this software. Doing so may result in damage to the camcorder's hard disk and permanent data loss. Insert a fully charged battery pack into the camcorder in advance and use the compact power adapter. Do not allow the USB cable to be inadvertently disconnected. Before disconnecting the USB cable, use the "Safely Remove Hardware" icon in the System Tray to end the connection.
- While the camcorder is connected to the computer, make sure the computer does not enter power saving mode.

GuideMenu - Movie Backup and Transfer

You can back up movies recorded with the camcorder onto the computer or transfer those movies back. You can also use DVD MovieFactory SE to create high-definition AVCHD discs and standard-definition DVD discs. Refer to *Creating an AVCHD Disc or a DVD-Video Disc* (10) for details.

Backing Up your Movies

Back up movies you recorded with the camcorder onto the computer's hard disk. You can use DVD MovieFactory SE to edit your movies and WinDVD SE to play them back.

1 Click [Save Files to PC].

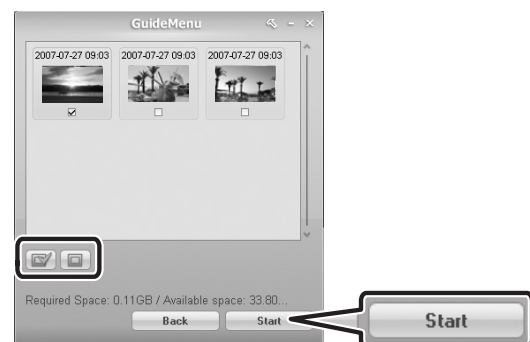


2 Select the folder where you want to save the files and click [Next]. Select a folder on the computer's built-in hard disk.



3 Select the scenes you want to save and click [Start].

- You can also click on the following buttons.
 - ☒ : Select all scenes at once.
 - ☐ : Remove the checkmarks from all selected scenes at once.
- If there are less than 3 GB of available hard disk space, the backup operation will not start.
- It may take some time to display all the scenes' thumbnails.



4 When the files have been saved successfully, click [OK].

! IMPORTANT

If a folder on an external hard disk is selected, the message “Delayed Write Failed” will appear and you may not be able to save the files.

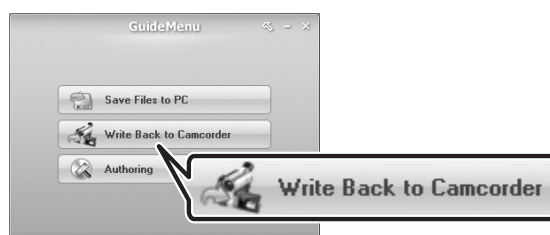
i NOTES

- Movies recorded with this camcorder have a maximum file size of 2 GB (about 17 min. in HXP mode; about 35 min. in SP mode). Longer scenes will be divided into files smaller than 2 GB. They will be saved as separate scenes when transferred to a computer.
- The file name of scenes saved on the hard disk reflects the date and time (in 24-hour format) of the original recordings. For example, the file name of a recording made around 9 p.m. on October 25 will be:
20071025212030.m2ts
YYYYMMDDhhmmss
- Unless you select a different folder in step 2, scenes will be saved in folders that reflect the date of recording under the **My Videos** folder in the **My Documents** folder.
The exact path is different for each system but a typical path for the scene on the previous example would be:
**C:\Documents and Settings\
[User name]\My Documents\
My Videos\20071025**

Transferring Movies Back to the Camcorder

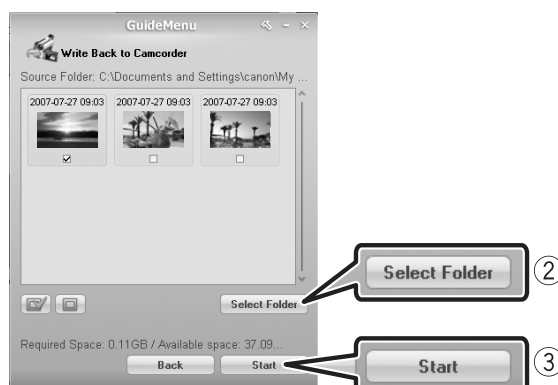
After movies have been transferred to your computer, they can be transferred back to the camcorder - even after being edited with DVD MovieFactory SE. After movies have been transferred back, you can connect the camcorder to a high-definition TV set to play back your movies.

1 Click [Write Back to Camcorder].



2 Click [Select Folder]. In the window that opens, select a folder and then click [OK].

Select a folder on the computer's built-in hard disk. You cannot select a folder on the computer's CD or DVD drive.



3 Select the scenes to transfer and click [Start].

- It may take some time to display all the scenes' thumbnails.
- Scenes larger than 2 GB cannot be selected.

4 Read the message and click [Yes] to continue.

Click [No] to cancel and return to the GuideMenu screen.

5 Click [OK].

WHEN TRANSFERRING MOVIES WITH LARGE FILE SIZES

When transferring movies back to the camcorder, the computer requires available hard disk space the same size as the file sizes of the movies to be transferred. You can change the temporary folder used for this task by performing the following steps.

1 Click in the main menu.



2 Click in the folder configuration screen.

The folder selection screen appears.

3 Select a folder on a hard disk that has sufficient available hard disk space and click [OK].

4 Click [OK] in the folder configuration screen.

! IMPORTANT

- Movies originally recorded with this camcorder can be transferred from the computer. They can be transferred even if they were edited with DVD MovieFactory SE. If other types of movies are transferred back, correct playback cannot be guaranteed.
- Make sure to back up all data in the camcorder before transferring movies.

- Do not disconnect the camcorder's power source or USB cable while transferring movies back. Doing so may result in damage to the camcorder's hard disk. Insert a fully charged battery pack into the camcorder in advance and use the compact power adapter. Do not allow the USB cable to be inadvertently disconnected.
- Movies transferred to this camcorder will not play back properly if they contain scenes that were recorded with another camcorder or recorded in another video specification/television system.
- When transferring movies back to the camcorder, the computer requires available hard disk space the same size as the file sizes of the movies to be transferred.
- If the sum of the number of scenes in the camcorder and the number of scenes to be transferred is about 1,000 scenes, scenes may not be transferred back.
- We recommend transferring back fewer than 100 scenes at a time.

NOTES

- The date and time of movies transferred back to the camcorder will reflect the time of their transfer.
- Movies recorded with this camcorder have a maximum file size of 2 GB (about 17 min. in HXP mode; about 35 min. in SP mode). Longer scenes will be divided into files smaller than 2 GB. They will be saved as separate scenes when transferred to a computer.
- In Windows Vista, when transferring movies back to the camcorder from an AVCHD disc created with DVD MovieFactory SE, first insert the disc into the computer's DVD drive and copy the movies onto the computer's hard disk.
On the original AVCHD disc, movies are saved with the file name xxxxx.m2ts, where "xxxxx" is a five-digit number, in the following path on the computer's DVD drive:
BDMV\STREAM.
Then, in step 2, select the folder to which the movies were copied.
- In Windows XP, when transferring movies back to the camcorder from an AVCHD disc created with DVD MovieFactory SE, first import the movies on the disc into DVD MovieFactory SE and then export the movies to the computer as AVCHD files. Then, in step 2, select the folder to which the movies were exported. (📖 12)

Additional Software in the Corel Application Disc CD-ROM

Editing Movies with DVD MovieFactory SE

Use this editing software to touch up (cut, delete and move) movies transferred to your computer with GuideMenu, to add music, titles and transition effects and to create your own DVDs with personalized menus. For further details, refer to the help files in the DVD MovieFactory SE software.

CREATING AN AVCHD DISC OR A DVD-VIDEO DISC

You can create a high-definition AVCHD disc or standard definition DVD disc with movies on the camcorder you have backed up onto your computer.

1 Connect the camcorder to the computer.

Refer to *Connecting the Camcorder to the Computer* (📖 6).

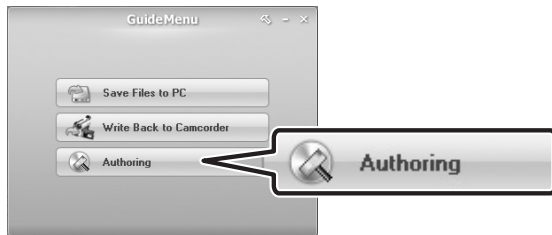
2 Back up the movies on the camcorder onto your computer.

Refer to *Backing Up your Movies* (📖 7).

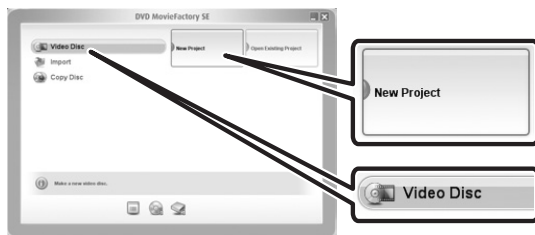
3 Insert a standard-size (12 cm) DVD disc into the DVD drive.

You can use either a DVD-RW or a brand new DVD-R disc.

4 Click [Authoring].



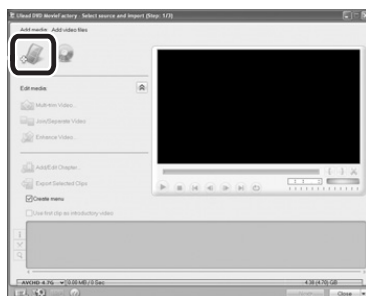
5 Click [Video disc] and then [New project].



6 Select the disc type and click [OK].

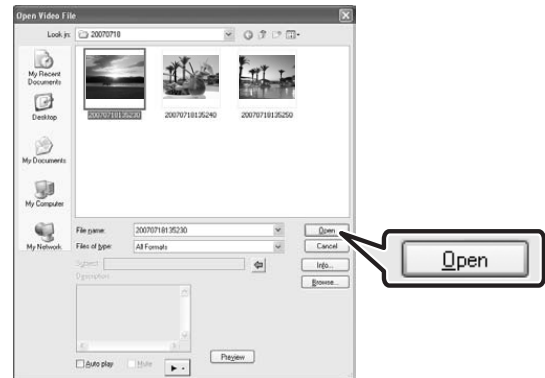


7 Click the  icon.



8 Select the folder you backed up the movies to in step 2.

9 Select the scenes to add to the disc and click [Open].



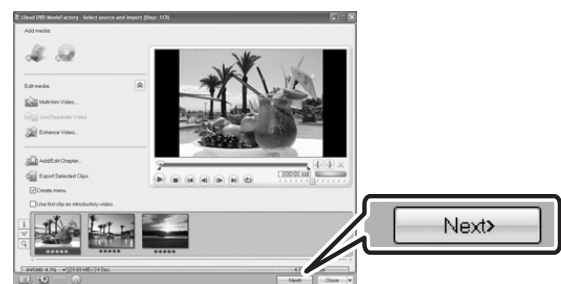
- You can click [Preview] to view scenes.
- You can select multiple scenes by pressing and holding the Shift key or Ctrl key while making selections.

10 Click [OK].

You can change the order of the clips if necessary.

11 Check that the movies to be included are displayed and click [Next].

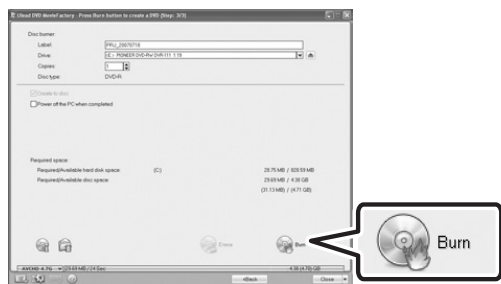
To add a personalized menu, make sure [Create menu] is selected. To not add a menu, skip directly to step 13.



12 Select a menu template and click [Next].

13 Check the settings and click [Burn].

You can change the settings if necessary.



14 Select an option and click [OK].

! IMPORTANT

- High-definition discs created or copied using Corel software can be played back only with AVCHD-compatible DVD players. Do not insert such discs into a DVD player that is not compatible with AVCHD specifications as you may not be able to eject the disc.
- When using a computer that has only one DVD drive to copy a 12 cm disc, you will only be able to use DVD-RW discs; DVD-R and DVD-R DL discs cannot be copied in such case.
- Use GuideMenu to transfer movies from the camcorder to your computer. Movies edited with MovieFactory SE that exceed 2 GB cannot be transferred. The following table gives approximate times for a 2 GB scene in each recording mode.

| Recording Mode | Playback time |
|----------------|---------------|
| HXP | 17 min. |
| XP | 28 min. |
| SP | 35 min. |
| LP | 45 min. |

i NOTES

- If you have the editing software Roxio MyDVD for Canon installed in your computer and you specify more than one disc, a disc cannot be created. Set [Copies] to [1].
- To create the same disc again in the future, select [Close DMF with saving project file and go to launcher.] in step 14 and click [OK]. The next time you create that same disc, select [Open Existing Project] to open the saved project.

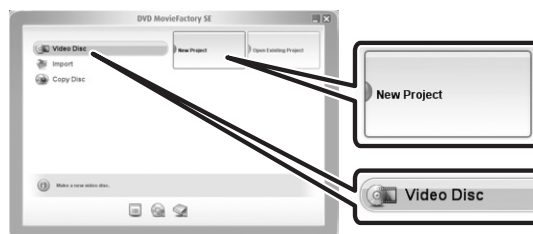
EXPORTING MOVIES ON AN AVCHD DISC TO THE COMPUTER

You can use DVD MovieFactory SE to import movies from an AVCHD disc and export them to an AVCHD file.

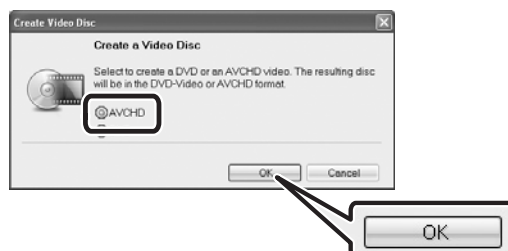
- 1 Insert an AVCHD disc into the computer's DVD drive.
- 2 Click [Authoring].



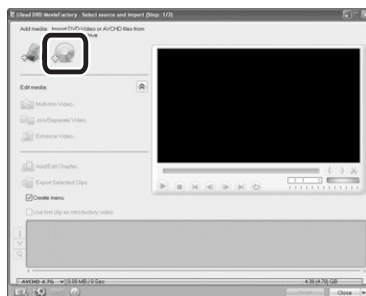
- 3 Click [Video disc] and then [New project].



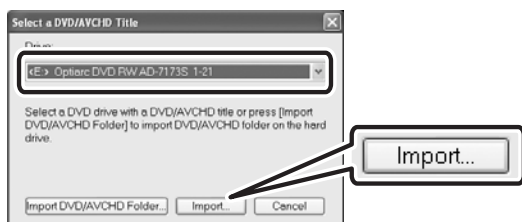
- 4 Select [AVCHD] and click [OK].



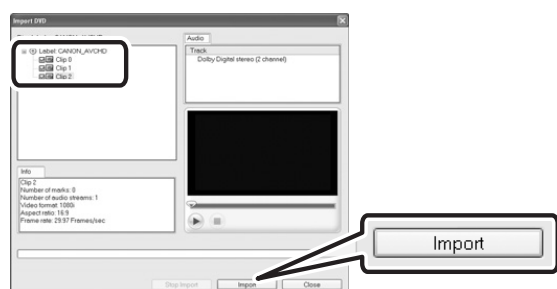
5 Click the  icon.



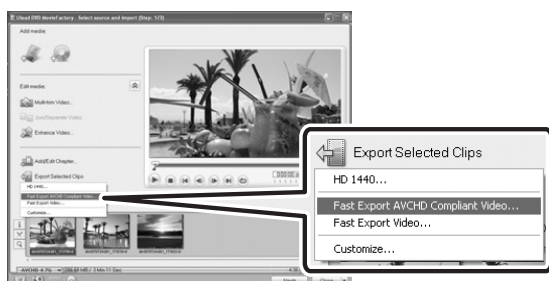
6 Select the DVD drive that contains the AVCHD disc and click [Import].



7 Select the video files to import from the disc and click [Import]. You can preview the files by selecting a file and clicking .



8 Select the scenes to export to a file and click [Export Selected Clips] and then [Fast Export AVCHD Compliant Video].



9 Select the folder where you want to export the files and click [Save].



Playing Back Movies with WinDVD SE

Play back video files saved on the computer using GuideMenu and your discs created with DVD MovieFactory SE. For further details, refer to the help files in the WinDVD SE software.

NOTES

- Depending on the movie, disc and the configuration of your computer, the processor may be overloaded and you may notice some anomalies such as video stuttering or audio drop-outs. Playback of discs recorded in high definition requires higher CPU resources. Close all running programs before starting the playback.
- Regarding the playback of AVCHD discs:** You can play back discs created using DVD MovieFactory SE. Correct playback cannot be guaranteed when playing back AVCHD discs recorded or created using other devices/software.
- Correct playback of AVCHD discs created using the supplied software cannot be guaranteed for all AVCHD-compatible devices. Discs created with DVD MovieFactory SE can be played back using WinDVD SE.

- **For Windows Vista users:** Depending on the configuration of your computer, playback quality may be affected by whether the Windows Aero graphic interface is activated or not. If you experience some anomalies during playback even though your computer complies with the system requirements, try turning the Windows Aero function on or off.
- Playback quality may be affected by the power saving mode of the operating system or the video card. If you are using a laptop computer, try connecting it directly to a power outlet.
- This program cannot be used to play back CPRM-protected discs.

IF A DISC CREATED WITH DVD MOVIEFACTORY SE CANNOT BE PLAYED BACK CORRECTLY

If you play back a high-definition disc created with DVD MovieFactory SE on an external AVCHD-compatible DVD device you may notice that the video freezes for a few seconds between scenes. In such case, perform the following procedure to create a new disc where all video is read as one continuous scene.

- 1 After adding the scenes you want to include in the disc, select the first scene.**
- 2 Press and hold the Shift key and select the last scene.**
- 3 With all the scenes selected, click [Join Video].**



- 4 Click [Add/Edit Chapter].**

- 5 Click [Remove All Chapters] and click [OK].**

All the scenes will be combined into one scene and will appear as a single scene when playing back the disc.

IF DVD MOVIEFACTORY SE OR WINDVD SE ARE NOT WORKING CORRECTLY

If you have the editing software Roxio MyDVD for Canon installed in your computer, DVD MovieFactory SE or WinDVD SE may not work correctly. In such case, follow the procedure below to solve the compatibility problem. Close any running Corel applications before continuing.

- 1 From the Start menu, open [My Computer].**
- 2 Right-click on the icon of the DVD drive, and select [Properties].**
- 3 Select the [UDF Reader] tab and remove the check mark from the [Enable UDF Reader on your drives] option.**
- 4 Click [Apply], then click [OK].**
- 5 Start the Corel software.**

Trademark Acknowledgements

- Corel, the Corel logo, Ulead, the Ulead logo, Ulead DVD MovieFactory, InterVideo, the InterVideo logo, WinDVD are trademarks or registered trademarks of Corel Corporation and its subsidiaries.
- Microsoft, Windows and Windows Vista are trademarks or registered trademarks of Microsoft Corporation in the United States and/or other countries.
- “AVCHD” and the “AVCHD” logo are trademarks of Matsushita Electric Industrial Co., Ltd. and Sony Corporation.
- Other names and products not mentioned above may be trademarks or registered trademarks of their respective companies.

Marques de commerce et marques déposées

- Microsoft, Windows et Windows Vista sont des marques déposées ou des marques enregistrées de Microsoft Corporation aux Etats-Unis d’Amérique et/ou dans d’autres pays.
- “AVCHD” et le logo “AVCHD” sont des marques de commerce de Matsushita Electric Industrial Co., Ltd. et Sony Corporation.
- Les autres noms de produits non mentionnés ci-dessus peuvent être des marques de commerce ou des marques déposées de leur compagnie respective.

Reconocimiento de marcas comerciales y registradas

- Microsoft, Windows® y Windows Vista son marcas comerciales de Microsoft Corporation, registradas en los Estados Unidos y/o en otros países.
- “AVCHD” y el logotipo “AVCHD” son marcas comerciales de Matsushita Electric Industrial Co., Ltd. y Sony Corporation.
- Otros nombres y productos no mencionados anteriormente pueden ser marcas comerciales o registradas de sus respectivas compañías.


DIM-825

Corel Application Disc

Global Support Information

The product activation website includes links to FAQ and Knowledge Base resources as well.

Informations d'aide à l'utilisateur

Le site d'activation du produit comprend des liens vers le fichier des questions courantes (FAQ) et une base de connaissances.

Información sobre soporte global

El sitio Web de la activación del producto también incluye enlaces a recursos como preguntas y respuestas y base de conocimientos.

<http://www.ulead.com/events/canon/runme.htm>

1-510-979-7118

USA: Monday – Friday, 9:30 a.m. – 5:30 p.m. (PST)

États-Unis d'Amérique : lundi-vendredi, 9.30 a.m. - 5.30 p.m. HNP

EE.UU.: Lunes a viernes, 9.30 a.m. - 5.30 p.m. (PST)

+44 (0)1628 58 1601

International support in the UK: Monday – Friday, 9 a.m. – 5 p.m. GMT

Assistance internationale au Royaume-Uni : lundi-vendredi, 9 a.m. - 5 p.m. GMT

Soporte internacional en el Reino Unido: Lunes a viernes, 9 a.m. - 5 p.m. GMT

Printed on 100% reused paper.

Document réalisé avec du papier recyclé à 100%.

Impreso en papel 100% reciclado.
