

Canon

Digital Video Software Macintosh

Version 27

Instruction Manual



English

Contents

Read This First	4
Checking Supplied Accessories	4
System Requirements	5
What is Digital Video Software?	6
Windows	7
CameraWindow	7
[Acquire Images] Tab	7
[Print] Tab	8
[Set to Camera] Tab	9
Camera Browser Window	10
Browser Window	11
[Image Viewer] Window	16
[Trim Image] Window	17
[Color/Brightness Adjustment] Window	17
[Red Eye Correction] Window	18
[Insert Text] Window	18
[Level Adjustment] Window	19
[Tone Curve Adjustment] Window	19
[Sharpness] Window	20
[Auto Adjustment] Window	20
Installing the Digital Video Software	21
Before Downloading Still Images	24
Connecting the Camcorder to a Computer	24
Downloading Still Images (ImageBrowser)	26
Using the Computer to Download Still Images	27
Auto-downloading	27
Applying Auto-downloading Settings	28
Downloading the Selected Still Images	31
Using a Card Reader/Writer	33
Using the Camcorder to Download Still Images (Direct Transfer Function)	34
Setting the Direct Transfer Download Destination Folder	34
Direct Transfer	35
Printing Still Images	36
Printing Still Images Recorded on the Memory Card	36
Printing Still Images Downloaded to the Computer	41
[One Photo per page Print]	41
[Index Print]	43
[Layout Print]	45
Multiple Page Printing	46
Organizing Images	48
Applying Star Rating	48
Specifying the Keywords	49
Classifying the Images	50
Sort by the Shooting Date	50
Sort by the Star Rating	51
Renaming Multiple Files	53
Searching for Images	54
Creating a Movie from the Still Images	56
Editing Movies (MovieEdit Task)	56

Playing Back Movies.....	59
Exporting Images	60
Changing the File Type and Saving.....	60
Extracting Still Images from Movies (MovieFrame Task).....	63
Adding Still Images to the Memory Card in the Camcorder.....	65
Adding Still Images to the Memory Card	65
Using Various Functions	67
Attaching Images to E-mail Messages	67
Running a Slide Show	70
Adding Sound to a Still Image.....	71
Reviewing and Changing the Owner Name of the Camcorder.....	72
Uninstalling the Software	73
Uninstalling ImageBrowser	73
Troubleshooting	74

Read This First

■ Disclaimer

- While every effort has been made to ensure that the information contained in this guide is accurate and complete, no liability can be accepted for any errors or omissions. Canon reserves the right to change the specifications of the hardware and software described herein at any time without prior notice.
- No part of this guide may be reproduced, transmitted, transcribed, stored in a retrieval system, or translated into any language in any form, by any means, without the prior written permission of Canon.
- Canon makes no warranties for damages resulting from corrupted or lost data due to mistaken operation or malfunction of the camcorder, the software, memory cards (miniSD Cards), personal computers, or peripheral devices, or due to use of a memory card not initialized by a Canon camcorder.

■ Trademark Acknowledgments

- Macintosh, Mac OS, iPhoto and QuickTime are trademarks of Apple Inc., registered in the U.S. and other countries.
- **mini** is a trademark of SD Card Association.
- Intel is a trademark or a registered trademark of Intel Corporation or its subsidiaries in the United States and other countries.
- Other names and products not mentioned above may be registered trademarks or trademarks of their respective companies.

© Canon Inc. 2007 All rights reserved.

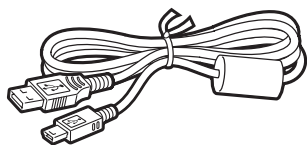
■ Safety Precautions

Do not play the supplied CD-ROM(s) in any CD player that does not support data CD-ROMs. Playing the CD-ROM(s) in an audio CD player (music player) could damage the speakers. It is also possible to suffer from hearing loss from listening with headphones to the loud sounds of a CD-ROM played on a music CD player.

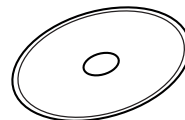
Checking Supplied Accessories

Use the following accessories to download recorded still images from a memory card to your computer.

- IFC-400PCU USB Cable



- DIGITAL VIDEO Solution Disk



The explanations in this manual use mainly Mac OS X version 10.3 screen shots. The steps and windows may vary depending on your computer.

System Requirements

OS:	Mac OS X (version 10.3/10.4)
Computer Model:	Computers that come with above OS preinstalled
CPU:	PowerPC G3/G4/G5, or Intel processor
RAM:	256 MB or more
Interface:	USB
Free Hard Disk Space:	Canon Utilities - ImageBrowser 200 MB or more
Display:	1024 × 768 pixels/32,000 colors or better



- Proper operation is not guaranteed on any particular system, even if it meets the requirements outlined above.
- ImageBrowser does not operate on disks initialized with the Unix File System (UFS).
- A CD-ROM drive is required to install the software.

What is Digital Video Software?

The following software will be installed by installing the Digital Video Software.

■ ImageBrowser

- Viewing downloaded still images
- Categorizing, organizing, and searching large volumes of still images
- Editing still images
- Changing the data for still images and save them as new files
- Attaching still images to e-mail
- Viewing still images in a slide show
- Adding sound to a still image
- Printing still images with titles and comments
- Printing indexes

■ CameraWindow

- Downloading still images from a memory card to your computer
- Viewing still images recorded in a memory card
- Printing still images recorded on a memory card without downloading the still images to the computer

This instruction manual explains how to install the software, what you can do with the main features and how to operate them. For more detailed operational instructions, refer to the Help menu of each software program.

Windows

CameraWindow

CameraWindow is a program created to download still images from the memory card to the computer. Furthermore, you can print still images recorded on the memory card without having the images downloaded to the computer (36), and you can confirm and change the owner's name of the camcorder you specify (72). Refer to *Using the Computer to Download Still Images* (27) for launching the software. The Remote capture function is not supported by the camcorder.



- Click the [CameraWindow] icon in the Dock (bar appearing at the bottom of the desktop) if the Camera Control window does not appear.
- When the [CameraWindow] icon is not in the Dock, double click the [Canon Utilities] folder on the drive where the program was installed, followed by the [CameraWindow] folder and the [CameraWindow] icon.

■ [Acquire Images] Tab

This tab is used for downloading still images recorded on the memory card by connecting a camcorder or a card reader/writer to the computer.

Camera Control window

Selects a function in the Camera Control window.



Specify the image type to be downloaded and the destination folder.

Images in the camcorder are displayed allowing you to select images.

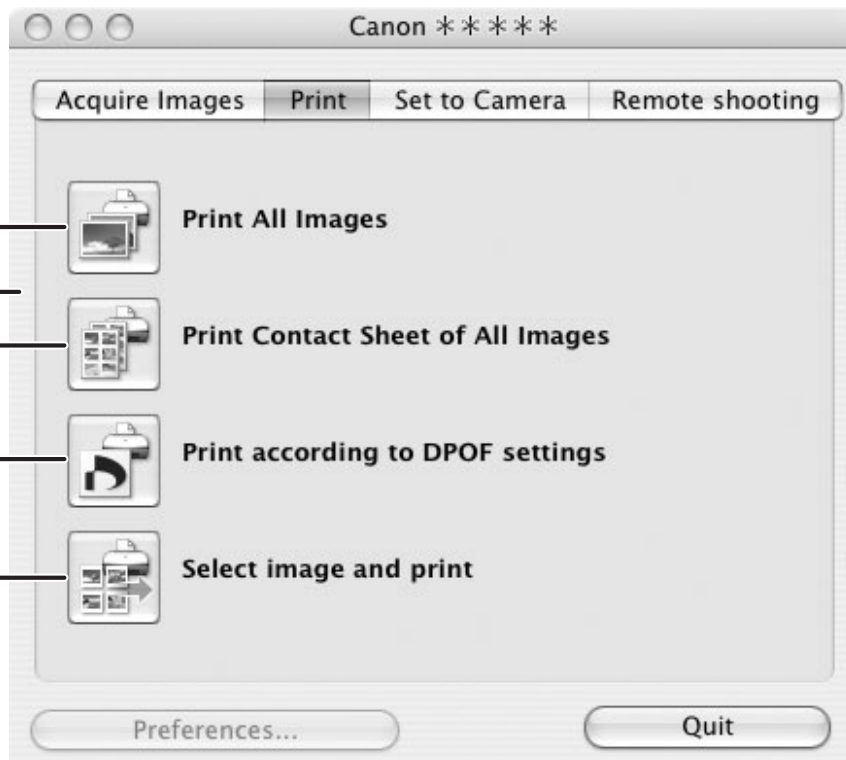
Images will be downloaded to the computer, and ImageBrowser starts.

■ [Print] Tab

This tab is used for printing still images on the memory card without having the images downloaded to the computer. The window varies depending on the selected printing type. Refer to *Printing Still Images Recorded on the Memory Card* (36).

Camera Control window

Prints all still images in the card one image per page.



Displays a list of the still images in the card, allowing you to select which ones to print.

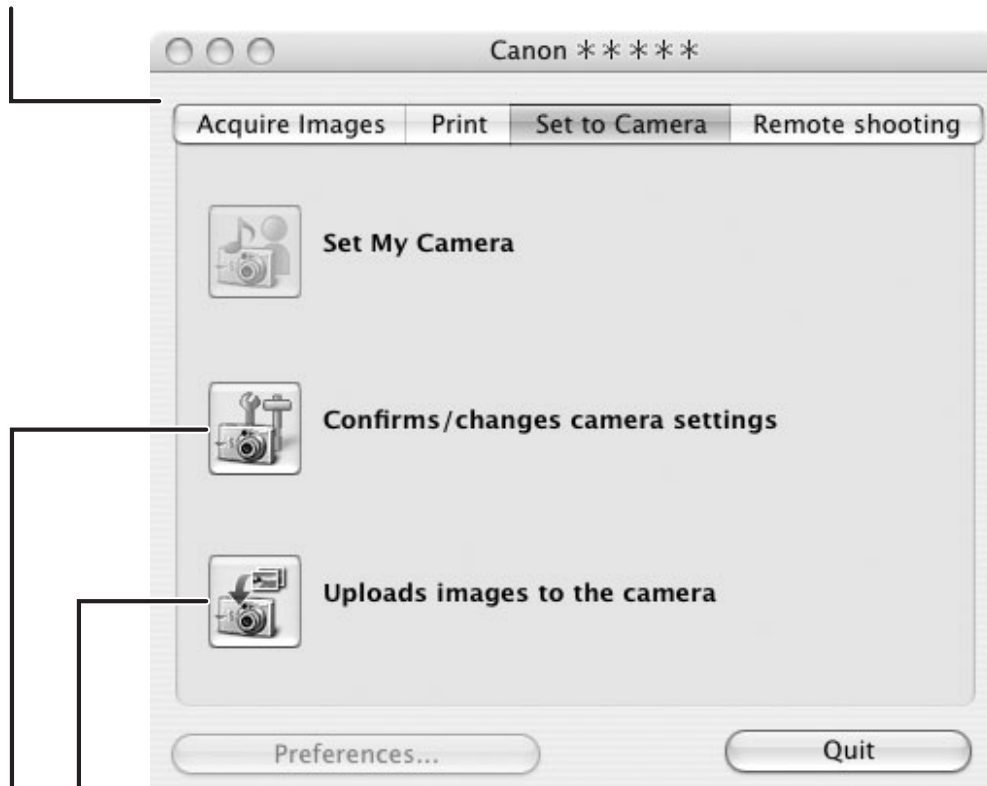
Prints according to the DPOF print settings set by the camcorder to the still images recorded on the card.

Prints all still images in the card as an index page (rows of images with file names and image information).

■ [Set to Camera] Tab

This tab is used for confirming and changing the owner's name of the camcorder you can specify (📖 72) and uploading the still images to the card. My Camera function is not supported by the camcorder.

Camera Control window



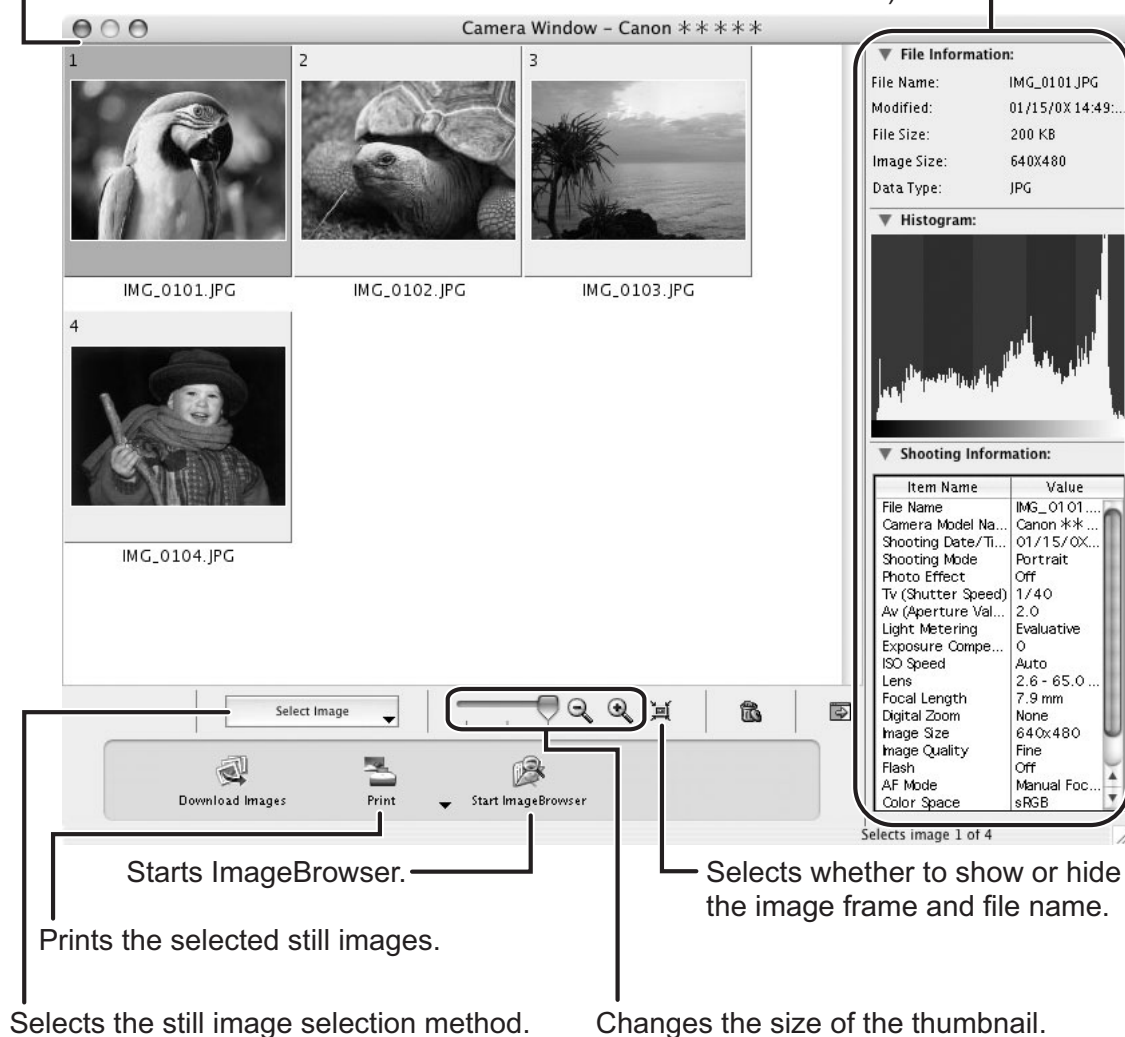
Uploading the images from the computer.

Enter or change the name of the camcorder's owner.

■ Camera Browser Window

Camera Browser window

Still image information and a histogram
(This will not be displayed when using
a card reader/writer.)

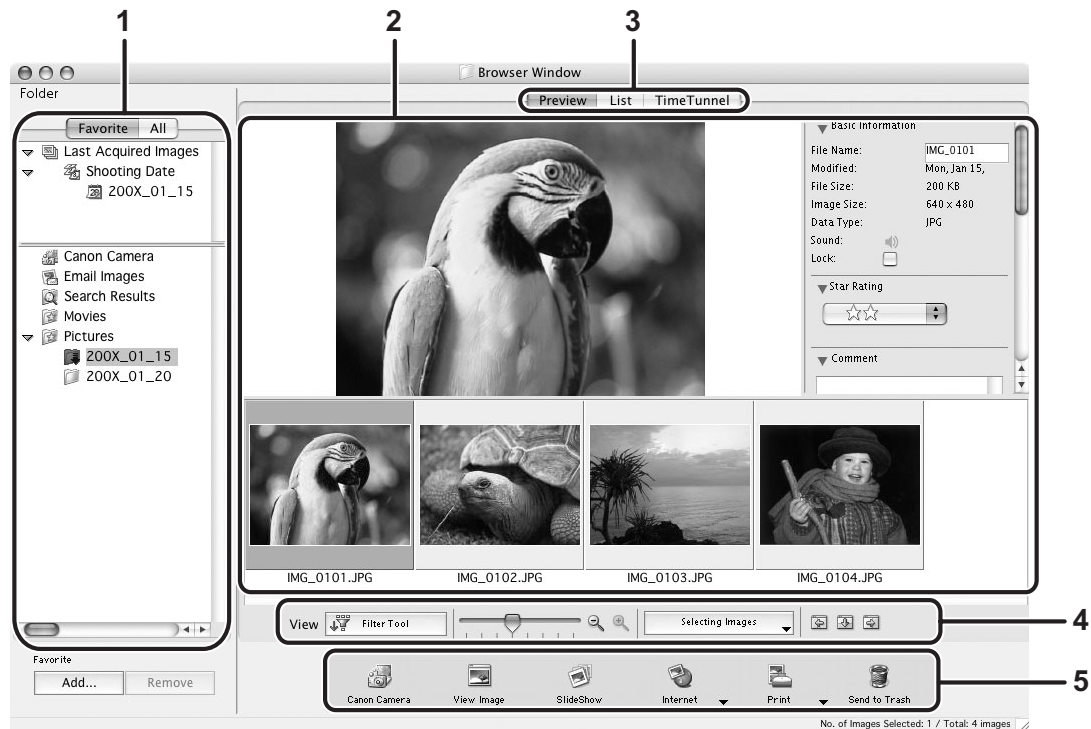


If your camcorder supports wide size still image (16:9 such as 1920 x 1080 pixels) recording, the thumbnails that appear in this window will be also 16:9 images. The sample images used on this instruction manual are normal size still images (4:3).




Browser Window

ImageBrowser is a software program used for organizing, printing and editing the downloaded still images. To start ImageBrowser, click the [ImageBrowser] icon in the Dock. If the ImageBrowser icon is not in the Dock, double-click the [Canon Utilities] folder on the drive on which the program was installed, followed by the [ImageBrowser] folder and the [ImageBrowser] icon.



1 Explorer View

In the [Last Acquired Images] panel, the newly downloaded still images are placed into virtual folders classified by recording date. In the panel below, the folders that the downloaded still images are actually saved in are displayed. Selecting the [Favorite] tab shows only the folders that are registered as favorites. The [All] tab shows all available folders.  indicates that newly downloaded still images are in the folder.

Clicking the triangle symbol besides the folder name displays/hides the folder contents. To register a folder as Favorites, follow the instructions below.

When you have selected the [Favorite] tab:

Click [Add] and specify a folder.

When you have selected the [All] tab:

Select a folder and click [Add to Favorites].

To remove the registered folder, select the folder, and click [Remove].

2 Browser Area

This area displays the images contained in the selected folder.

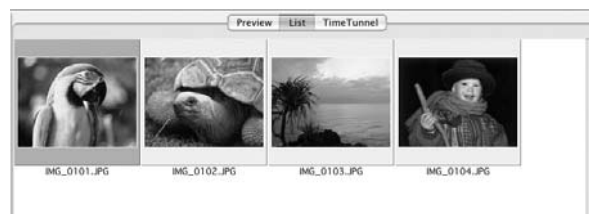
3 View Mode

You can select a view mode of images in the Browser Area.

[Preview]: The thumbnails are displayed at the bottom of the Browser Area, and the Information Panel is displayed in the upper part.

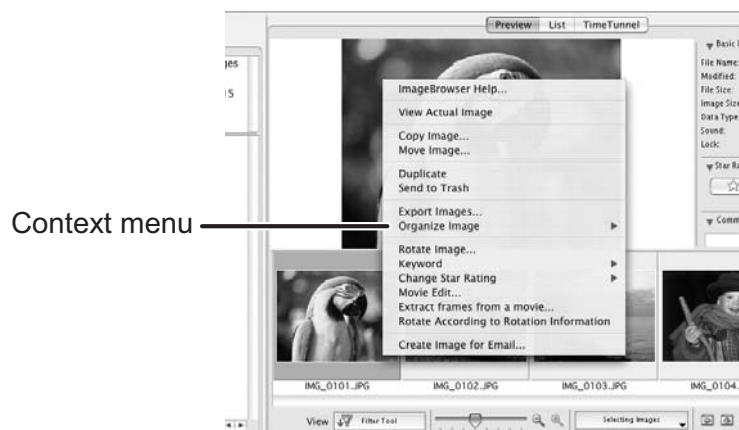


[List]: The images are displayed as thumbnails. The thumbnails can be enlarged/reduced by selecting [Enlarge] or [Reduce] from the [View] menu.



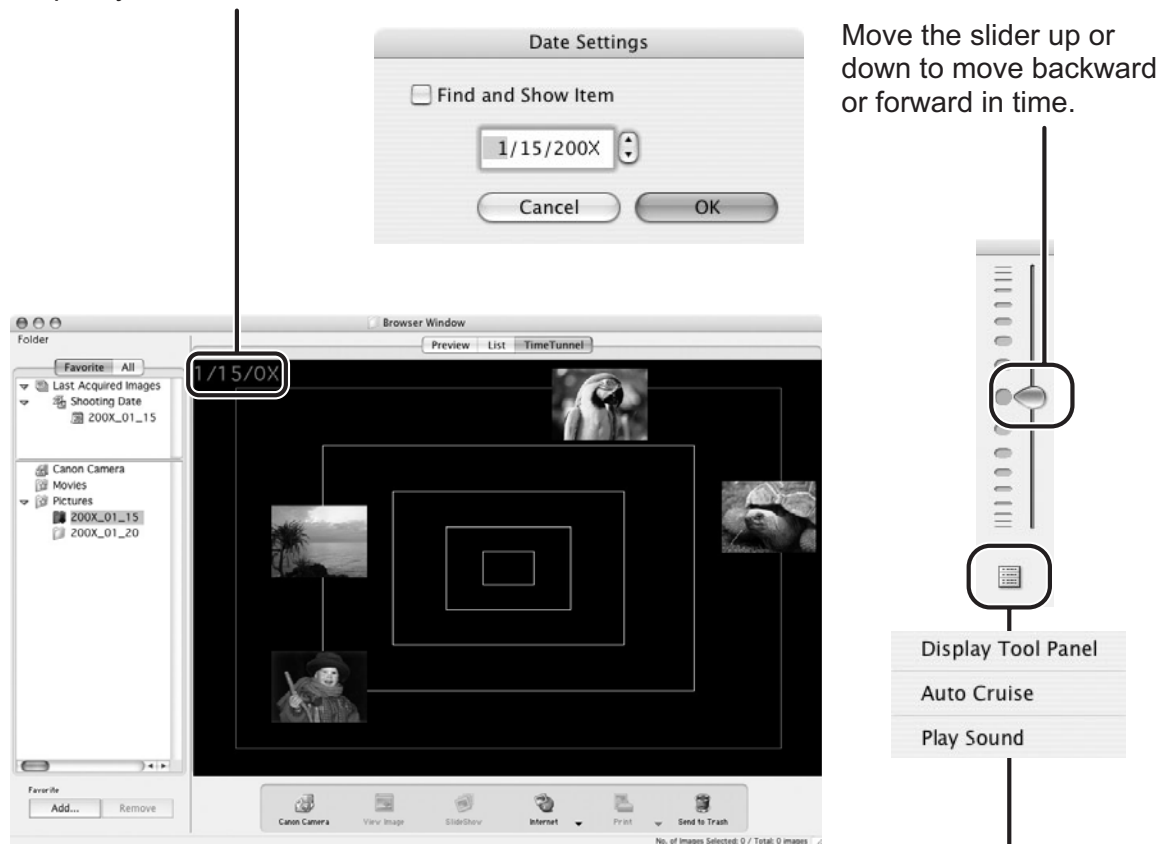
Context Menu

When the view mode is set to [Preview] or [List], click on a thumbnail while pressing the [control] key on the keyboard, a context menu will appear. The context menu allows you to select several functions directly without using the menu bar located on top of the window.



[TimeTunnel]: The images are displayed in the chronological order.

The date/time at which the images were shot appears on the red line. You can change this date/time by double-clicking it on the display. A window similar to the one below appears. Specify the new date/time.



Click to display the control panel.

[Display Tool Panel]:

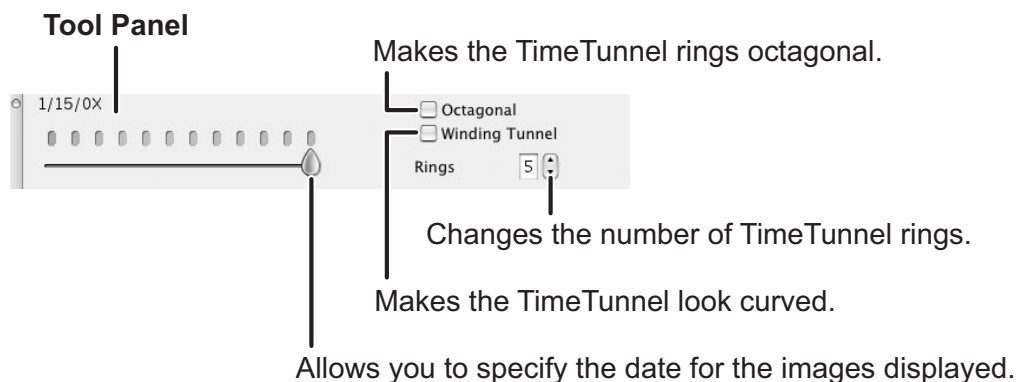
Select to display or hide the tool panel.

[Auto Cruise]:

Enables or disables [Auto Cruise]. When [Auto Cruise] is active, the time movement continues even after you have moved and released the bar.

[Play Sound]:

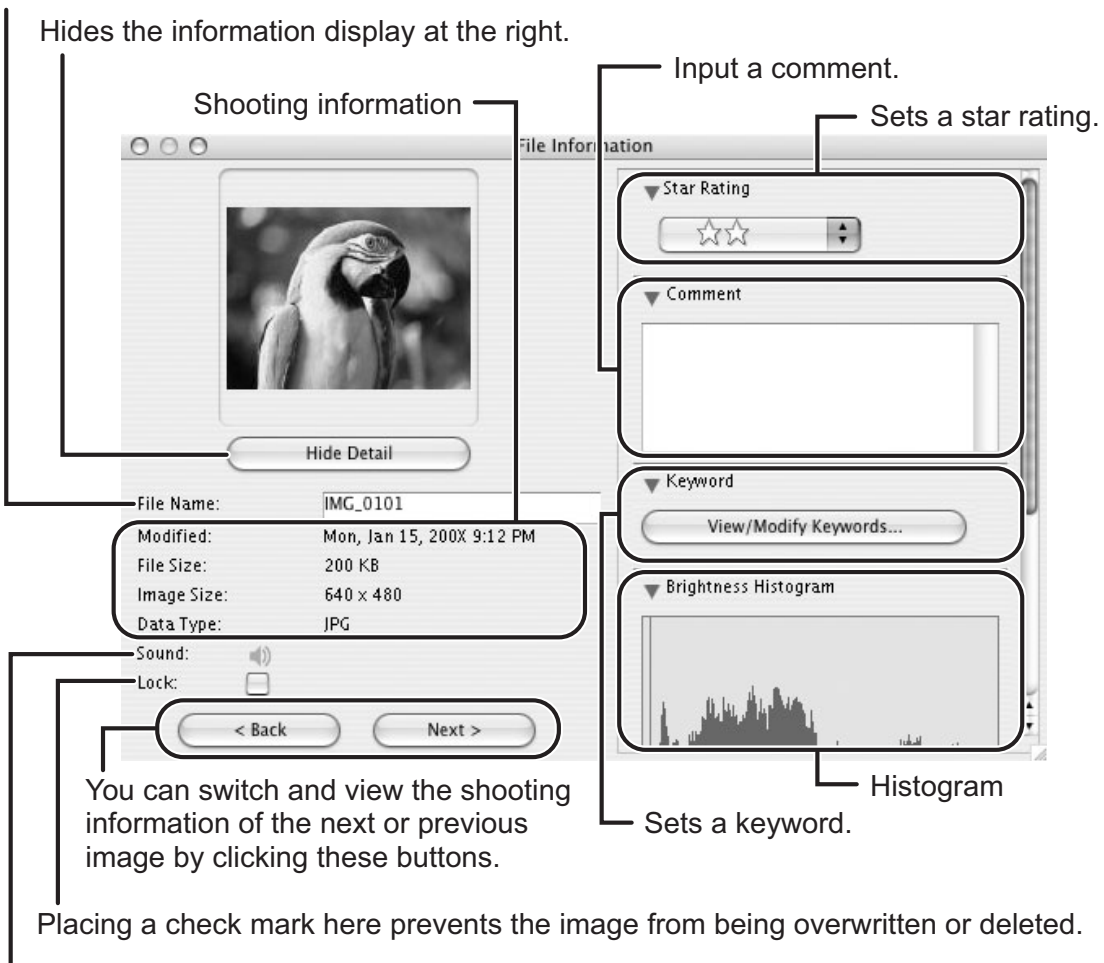
Plays back the added sound.



[File Information]

When the view mode is set to [List] or [TimeTunnel], select [Get Info] from the [File] menu to display the following window.

You can rename files.



You can play sounds if they are attached to images.

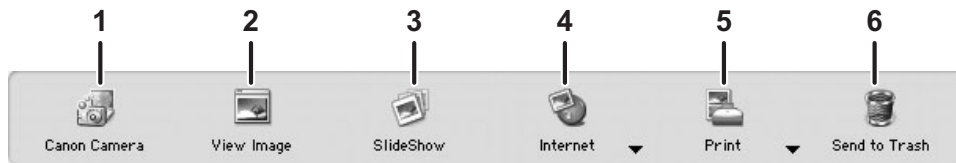
4 Browser Area Tool Bar

The tool bar does not appear in the [TimeTunnel] mode.



1	Filter Tool	Allows you to select which still images to display according to the star rating. When you download the images, the star rating is set to two stars as a default. To change the star rating, refer to <i>Applying Star Rating</i> (48).
2	Enlarge/Reduce	Enlarges/Reduces the thumbnails in the Browser Window.
3	Selecting Images	Allows you to select all images and deselects images.
4	Display Pattern	Allows you to change the appearance of the Browser Window.

5 Application Tool Bar



1	Canon Camera	Opens CameraWindow.
2	View Image	Displays a selected image in the [Image Viewer] window.
3	SlideShow	Displays still images in a slide show.
4	Internet	Allows attaching the selected still images to e-mail messages.
5	Print	Prints the selected still images.
6	Send to Trash	Deletes the selected images.


[Image Viewer] Window

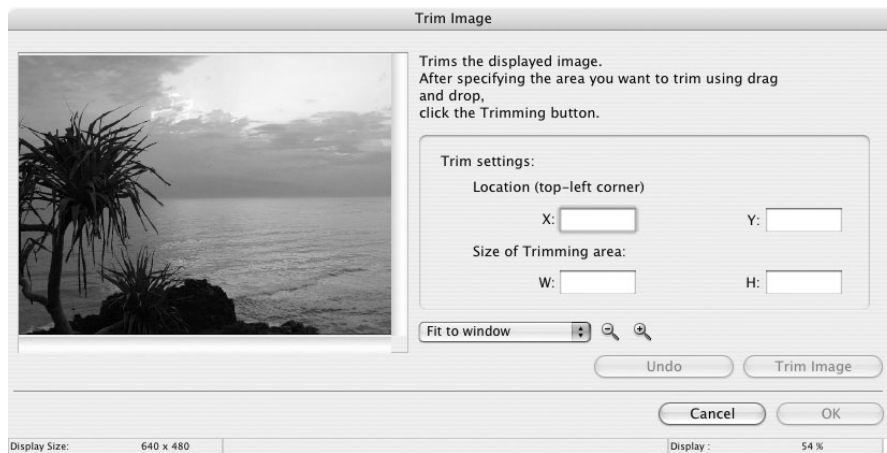
The [Image Viewer] window appears when you select an image and click [View Image] or double click an image.




1	Back/Next	Displays the previous/next image in the current folder.
2	Save	Allows saving the edited image.
3	Edit	Allows you to perform the following operations: red-eye correction, auto correct, color and brightness correction, sharpness adjustment, trimming, inserting text, or registering external image editing applications. Unable to use when the multiple images are selected.
4	Number of Displays	Allows you to display multiple images at the same time.
5	Synchronize	Synchronizes View functions across all displayed images.
6	Full Screen	Displays an image in full screen size. To return to Browser Window, click the full screen sized image or press any key.
7	Print	Prints the selected still image. Refer to <i>[One Photo per page Print]</i> (41).
8	Show Information	The shooting information of the image will be displayed. [Show AF Frame] cannot be used for the images recorded by the camcorder.

■ [Trim Image] Window

Select [Trim Image] from the  icon located at the bottom of the [Image Viewer] window. Either drag the pointer on the still image or specify the cropping area, and click [Trim Image].




■ [Color/Brightness Adjustment] Window

Select [Color/Brightness Adjustment] from the  icon located at the bottom of the [Image Viewer] window. Use this to change the image's properties by adjusting the RGB intensity, saturation and brightness.

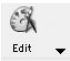


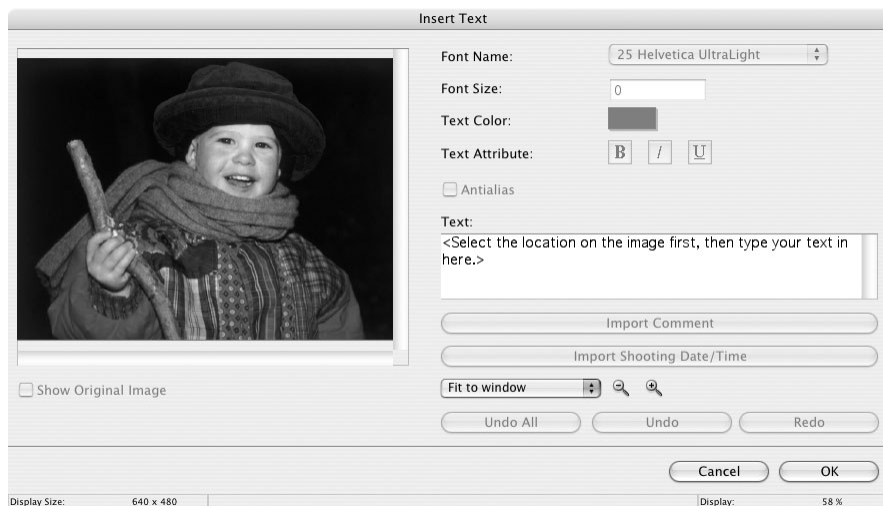
■ [Red Eye Correction] Window

Select [Red Eye Correction] from the  icon located at the bottom of the [Image Viewer] window. Use this to correct still images in which people's eyes appear red.



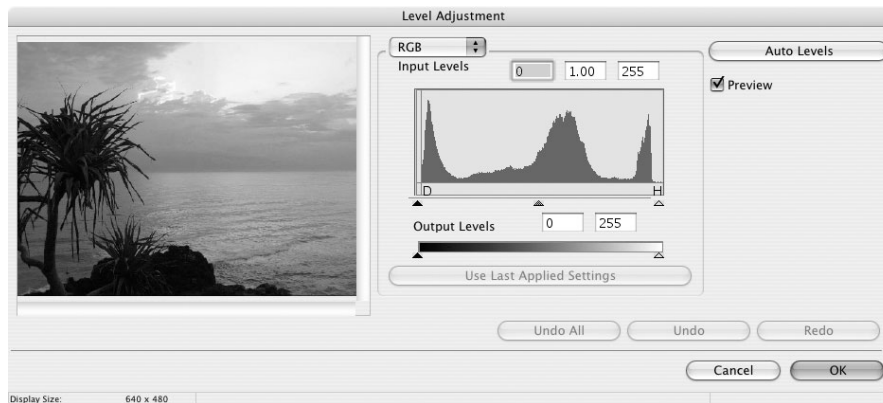
■ [Insert Text] Window

Select [Insert Text] from the  icon located at the bottom of the [Image Viewer] window. Use this to write text on still images.

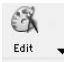


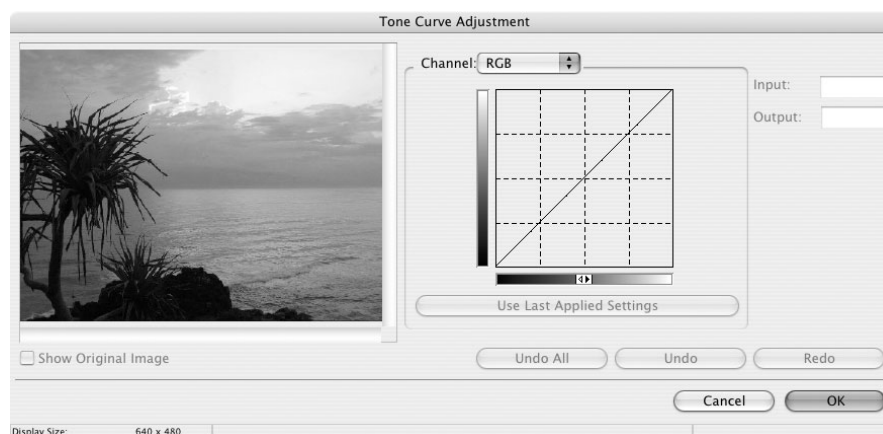
■ [Level Adjustment] Window

Select [Level Adjustment] from the  icon located at the bottom of the [Image Viewer] window. Use this to adjust the levels in a still image to change its appearance.




■ [Tone Curve Adjustment] Window

Select [Tone Curve Adjustment] from the  icon located at the bottom of the [Image Viewer] window. Use this to adjust the tone curve for a still image to change its appearance.



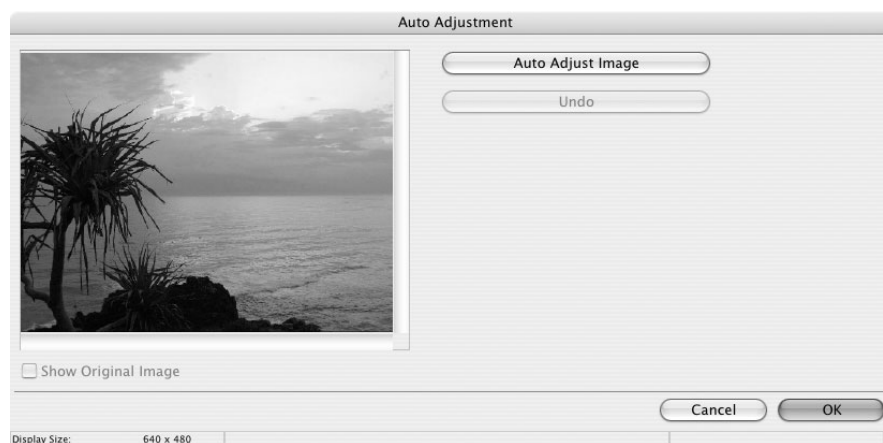
■ [Sharpness] Window

Select [Sharpness] from the  icon located at the bottom of the [Image Viewer] window. Use this to emphasize and clarify the outlines of people and objects.



■ [Auto Adjustment] Window

Select [Auto Adjustment] from the  icon located at the bottom of the [Image Viewer] window. Use this to automatically correct the color balance of the still image.



Installing the Digital Video Software



Before you connect the camcorder to the computer with the USB cable for the first time, you must install the Digital Video Software.



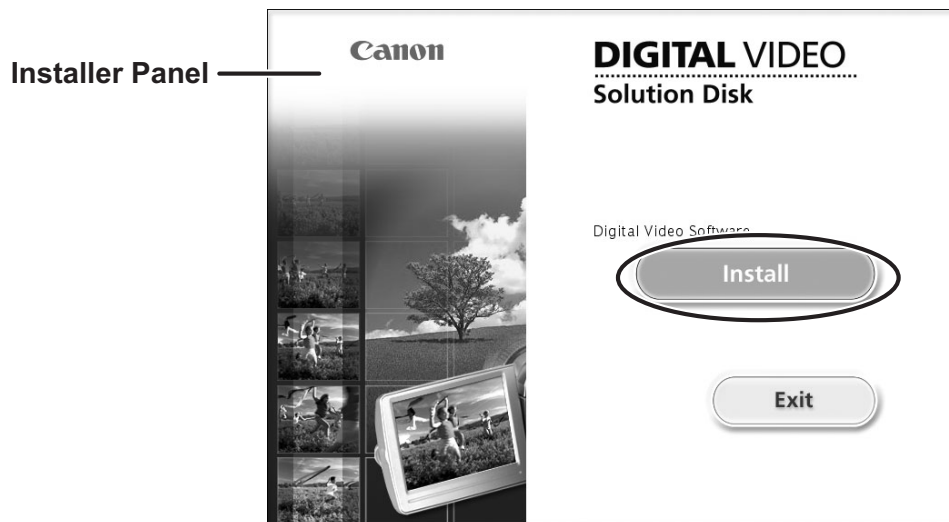
Your digital video camcorder is equipped with the standard Picture Transfer Protocol (PTP). This protocol enables you to download still images by simply connecting the camcorder to a computer with the USB cable (using software such as iPhoto or Image Capture preinstalled on Mac OS X).

However, note that there are several limitations to downloading still images with this method.

- It may take a few minutes, after connecting the camcorder, until you can download still images.
- Still images protected on the camcorder may lose this setting once they are downloaded to the computer.
- When downloading the still images by Image Capture that comes with Mac OS, the Exif version may change to 2.1 and image information may be modified. Either install ImageBrowser to download the still images or use the following procedure.
 - 1) Connect the camcorder to the computer, and start Image Capture.
 - 2) Click [Options].
 - 3) Remove the checkmark from [Embed Colorsync profile] in the [Download Options] tab and click [OK].

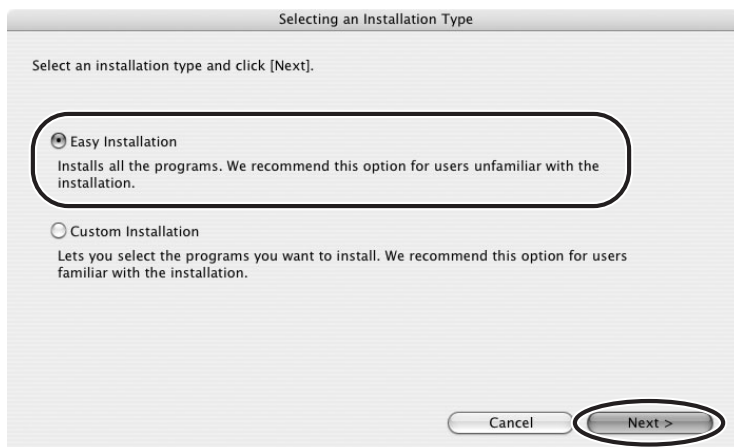
- 1 Close all programs that are running, and check that the camcorder is not connected to the computer.**
- 2 Set the DIGITAL VIDEO Solution Disk in the computer's CD-ROM drive.**
- 3 Double click the CD-ROM icon and the [CanonDigitalVideoInstaller] icon.**

4 Click [Install] under Digital Video Software.



5 Select [Easy Installation] and click [Next].

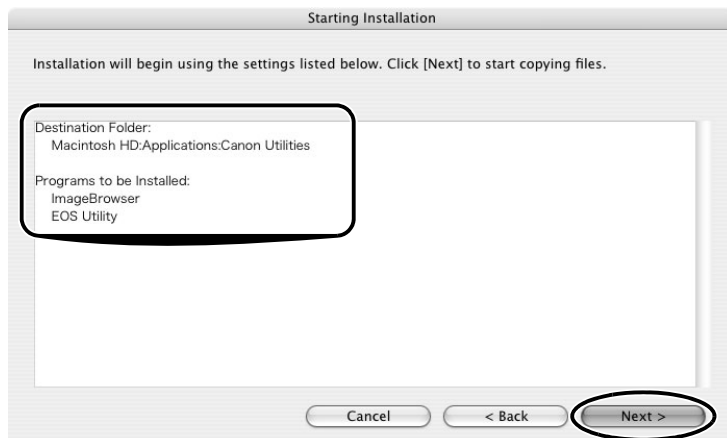
To install the software individually, select [Custom Installation].



When installing the software by selecting [Easy Installation], EOS Utility (software for downloading still images from the Canon EOS Digital SLR Cameras) will be installed. This software is used only for compatible Canon EOS Digital SLR Cameras, and the camcorder does not support this software.

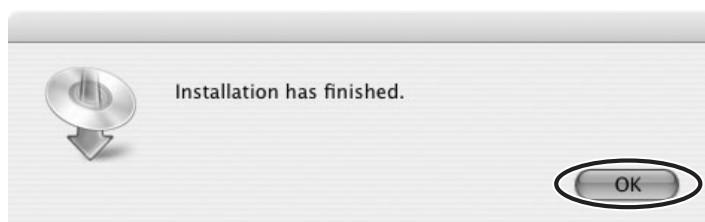
6 Read the license agreement and click [Agree] to accept the terms.

7 Review the installation settings and click [Next].



8 When the “Installation has finished.” message appears, click [OK].

After the installation is complete, restart the computer as prompted.



9 Remove the DIGITAL VIDEO Solution Disk from the CD-ROM drive.

When installation is complete, remove the DIGITAL VIDEO Solution Disk before you connect the camcorder to the computer.

Before Downloading Still Images




Connecting the Camcorder to a Computer



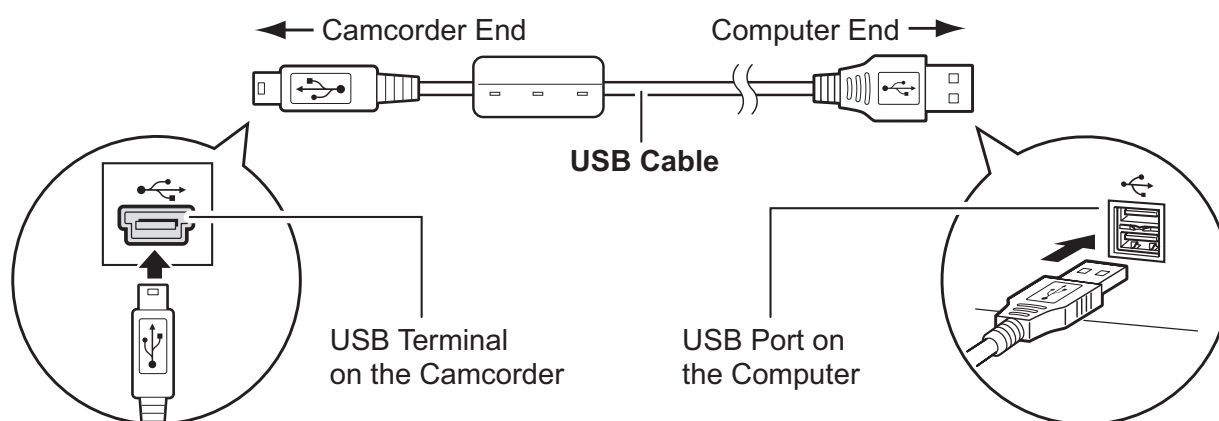
- Be sure to install the Digital Video Software before you connect the camcorder to the computer.
- Make sure the camcorder is being powered using the power adapter before connecting it to a computer.
- Connect the USB cable directly to one of the computer's main USB ports. The interface may not function correctly if the camcorder is connected via a USB hub.
- The connection may not operate correctly if you are using other USB devices, excluding USB mice or keyboards, at the same time. If this occurs, disconnect the other devices from the computer and try reconnecting the camcorder.
- Do not connect two or more camcorders to the same computer via the USB interface. The connections may not operate correctly.
- **Never allow the computer to go into standby (sleep) mode while a camcorder is connected via the USB interface.**



- Refer to your computer manual for the location of the computer's USB ports.
- See your camcorder instruction manual for connecting instructions.

- 1 Insert a memory card containing images into the camcorder.**
- 2 Connect the power adapter to the camcorder.**
- 3 Turn the POWER switch to ON and change the camcorder mode to PLAY by sliding the POWER switch down.**
- 4 Move the / switch to .**
Wait until the card access indicator stops flashing.

5 Attach the supplied USB cable to the computer's USB port and the camcorder's USB Terminal.



Downloading Still Images (ImageBrowser)

Below explains the procedure for connecting a camcorder to a computer using the USB cable. For connecting a card reader/writer, see *Using a Card Reader/Writer* (📖 33).



- You cannot connect the camcorder to a computer if the memory card contains 1800 images or more, and you may not be able to download images with ImageBrowser or OS standard software (depending on the computer you are using and the installed OS) if the memory card contains more than approximately 1000 images. In this case, use a card reader/writer to download images.
 - For instructions on how to connect a card reader/writer, see *Using a Card Reader/Writer* (📖 33).
- Observe the following precautions when the camcorder's access indicator is flashing. Failure to do so may cause memory card data to become corrupted.
 - Do not remove the memory card or detach the USB cable.
 - Do not turn off the camcorder or the computer.
 - Do not change the position of the POWER switch or the / switch.
- Images recorded onto the memory card or downloaded to the hard disk are important original data files. Create a copy of the file first before working on it on your computer.

Using the Computer to Download Still Images

You can select a downloading method in the Camera Control window.

■ Auto-downloading

1 Connect the camcorder to the computer (24).

- The Camera Control window will be displayed. If it does not appear automatically, click the [CameraWindow] icon in the Dock (the bar at the bottom of the desktop).
- If you do not wish the Camera Control window to open automatically when you connect the camcorder, click the [File] menu and clear the check mark from the [Displays this screen when the camera is connected].

2 Click [Starts to download images].

Click [Quit] to close the Camera Control window after downloading images.



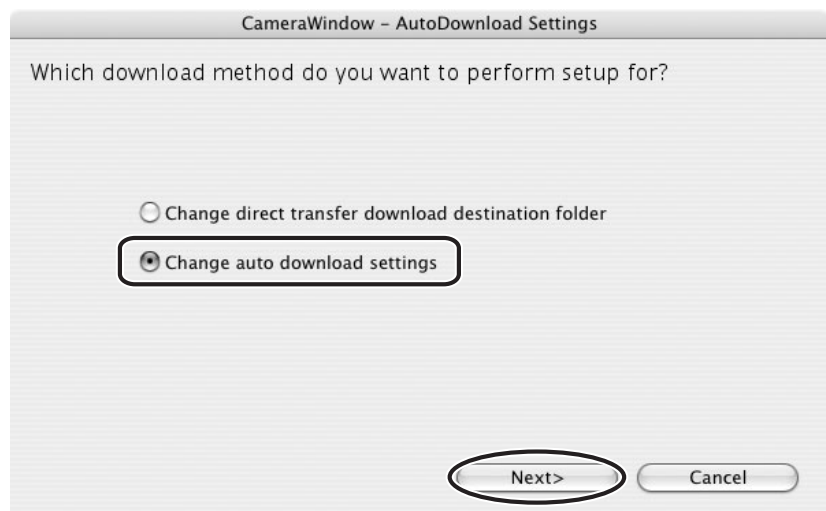
■ Applying Auto-downloading Settings

This task allows you to apply auto-downloading settings. You can specify the types of still images and the destination folder.

- 1** In the Camera Control window, click the [Acquire Images] tab and click [Preferences].

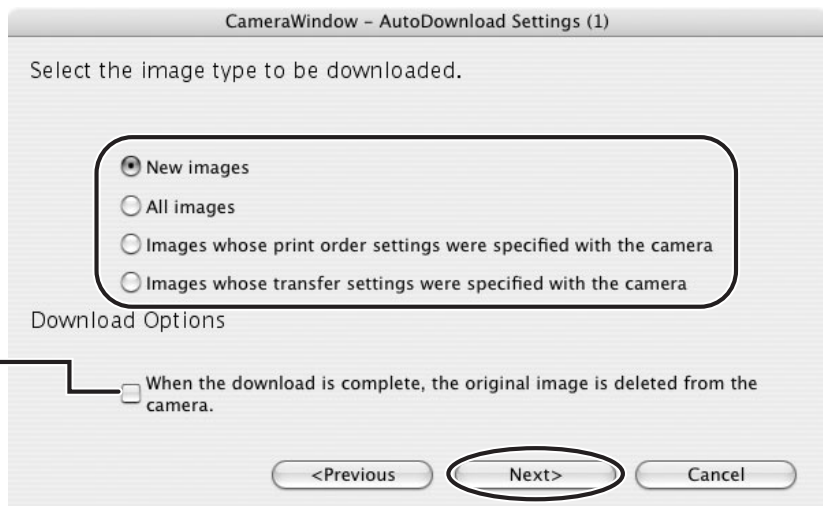


- 2** Select [Change auto download settings] and click [Next].



3 Select the image type to be downloaded and click [Next].

Place a check mark here if you wish the original image in the memory card to be deleted after downloading.



4 Specify the destination folder settings and click [Next].

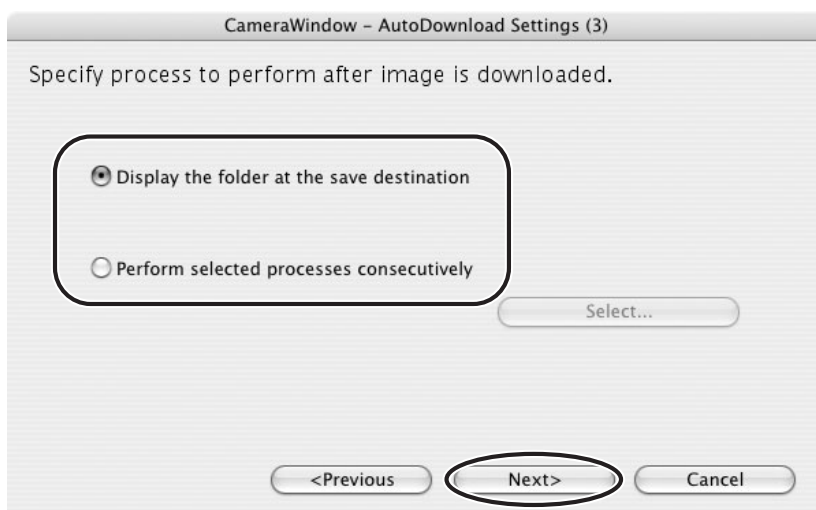
Destination Folder

Click this button to browse where you want to save the images.

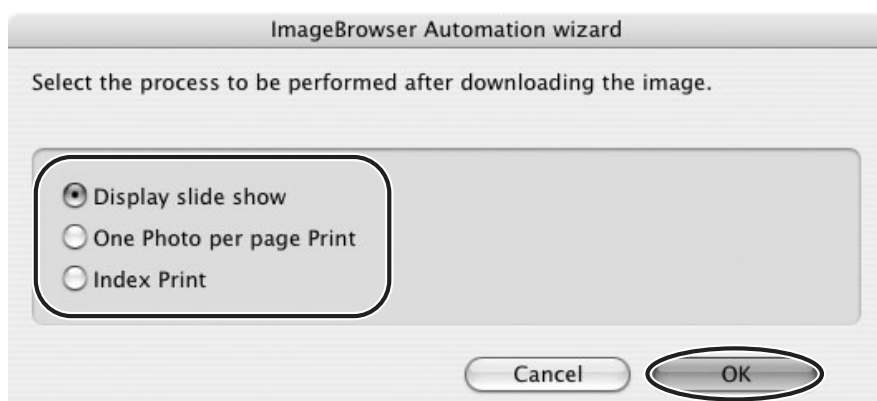
Select to specify the name of the subfolder.



5 Specify a process to perform after the image is downloaded and click [Next].



The window below will be displayed when you select [Perform selected processes consecutively] (you can redisplay the window by clicking [Select]). Select a process to perform after the image is downloaded, and click [OK].



6 Click [Finish].

Placing a check mark here makes images in the camcorder to be automatically downloaded when the camcorder is connected.



■ Downloading the Selected Still Images

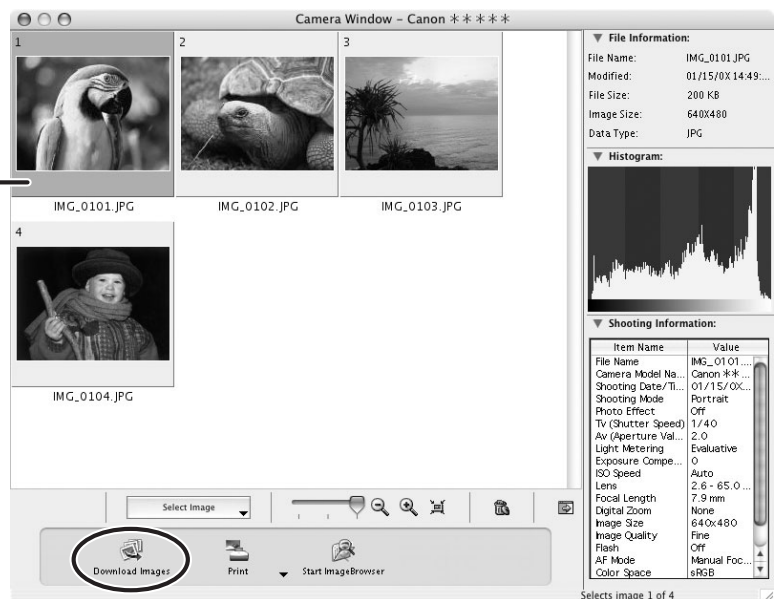
1 Click [Lets you select and download images].



2 Select images you wish to download and click [Download Images].

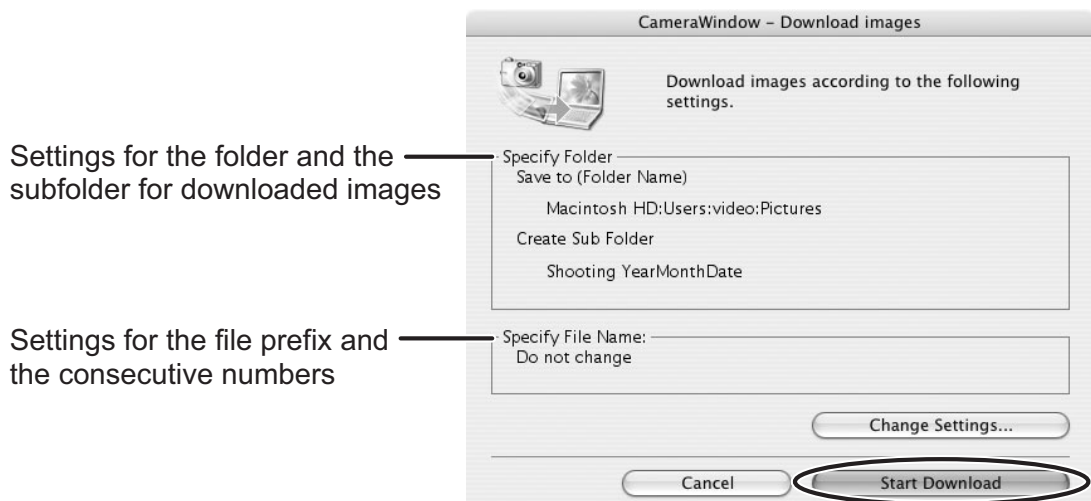
- Clicking on 2 images while holding down the [option] + [shift] key selects also all images between the 2 images.
- Clicking on different images while holding down the [shift] key selects multiple images.

A blue frame appears around the selected image.

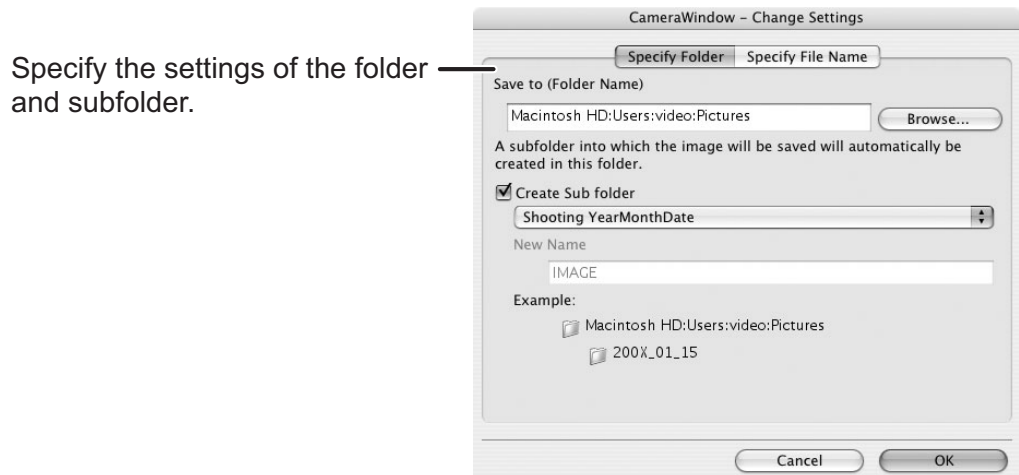


3 Confirm the settings and click [Start Download].

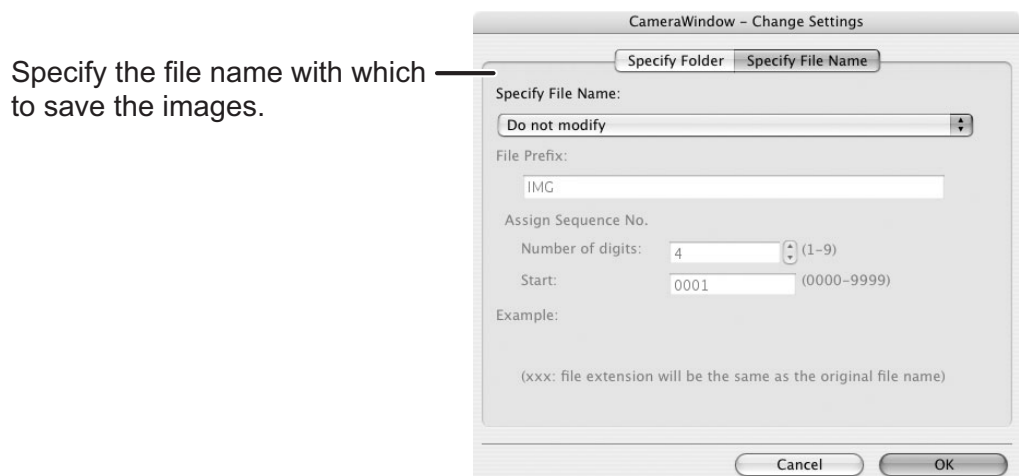
- ImageBrowser starts, and Browser Window appears.



- To make changes, click [Change Settings].
[Specify Folder] Tab



[Specify File Name] Tab



■ Using a Card Reader/Writer

The basic operations are the same as when you connect the camcorder to the computer. Follow the procedure below to open the CameraWindow. For instructions on how to connect the card reader/writer, refer to its manual.



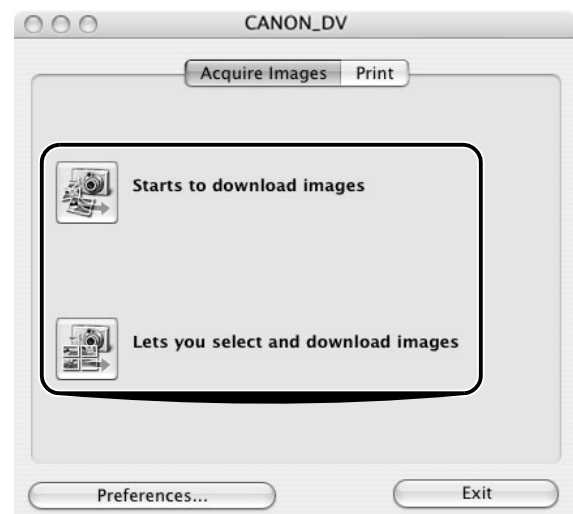
If your card reader/writer does not support miniSD cards, obtain an appropriate adapter for the card.

1 Insert a memory card containing still images recorded with the camcorder into the reader.

- When the Camera Control window does not appear automatically, click the [CameraWindow] icon in the Dock (the bar at the bottom of the desktop).
- If you do not wish the Camera Control window to open automatically when you connect the card reader/writer with a memory card, click the [File] menu and clear the check mark from the [Displays this screen when the camera is connected].

2 Select a method to download the images.

- [Starts to download images]: CameraWindow appears, and the images in the memory card are downloaded. To apply auto-downloading settings, refer to *Applying Auto-downloading Settings* (📖 28).
- [Lets you select and download images]: CameraWindow appears, and the images in the memory card are shown as thumbnails.



Using the Camcorder to Download Still Images (Direct Transfer Function)

If your camcorder supports the Direct Transfer function, you can use the camcorder to download images.

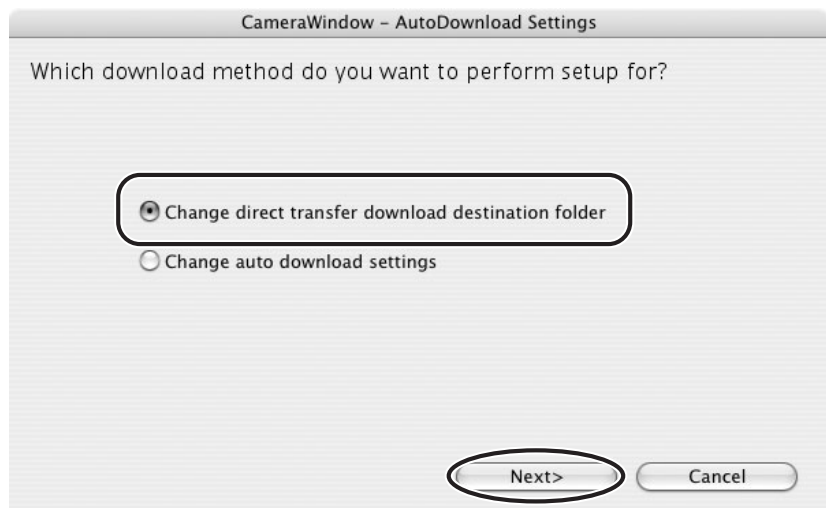
■ Setting the Direct Transfer Download Destination Folder

1 Click the [Acquire Images] tab and click [Preferences].

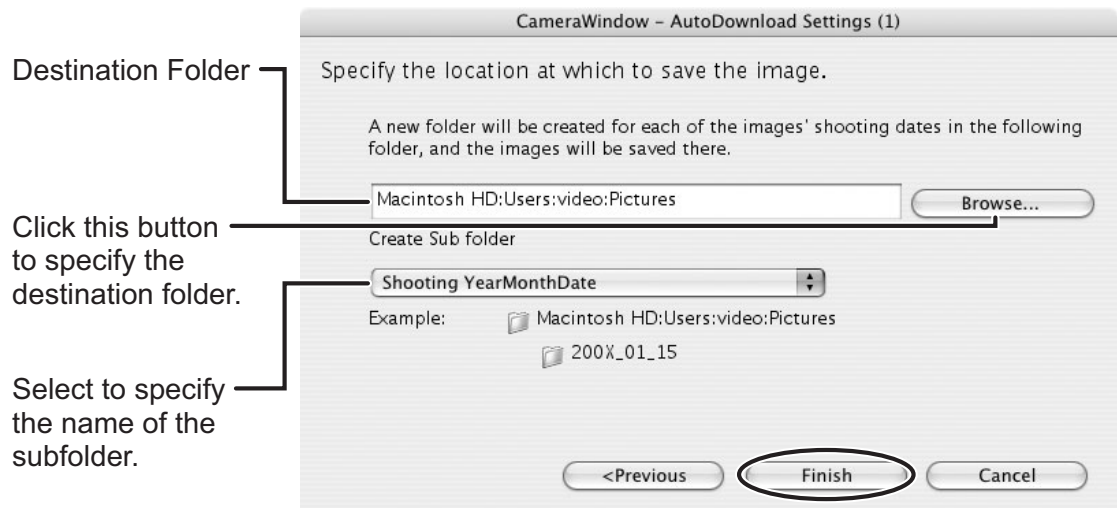
Click [Quit] to close the Camera Control window.



2 Select [Change direct transfer download destination folder] and click [Next].




3 Specify the destination folder settings and click [Finish].



■ Direct Transfer

1 Set the direct transfer settings on the camcorder screen after starting the Camera Control window.

- See your camcorder instruction manual for how to set and operate the camcorder to transfer images.
- The  button cannot be used when it is not lighted.

2 Press the button on the camcorder.

Printing Still Images

Printing Still Images Recorded on the Memory Card

You can select one of the following 4 methods to print still images in the card without downloading images to the computer.

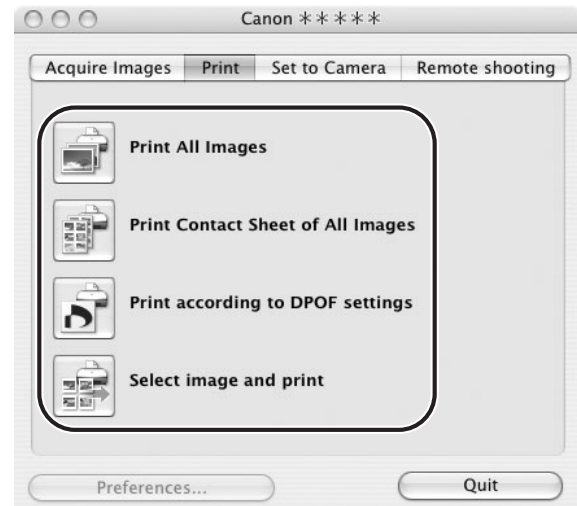
- [Print All Images]
 - Prints all still images recorded on a memory card in the connected camcorder or in a card reader/writer one image per page.
- [Print Contact Sheet of All Images]
 - Prints all still images recorded on a memory card in the connected camcorder or in a card reader/writer in an index (rows of images with file names and image information).
- [Print according to DPOF settings]
 - Prints according to the DPOF print settings set by the camcorder.
- [Select image and print]
 - A list of the still images recorded on a memory card in the connected camcorder or in a card reader/writer will be displayed, and you can select images you wish to print.

1 Connect the camcorder to the computer. (📖 24)

2 Click the [Print] tab in the Camera Control window.



3 Click on one of the 4 printing methods.



4 Specify the print settings and click [Print].

The window varies depending on the selected printing method in step 3.

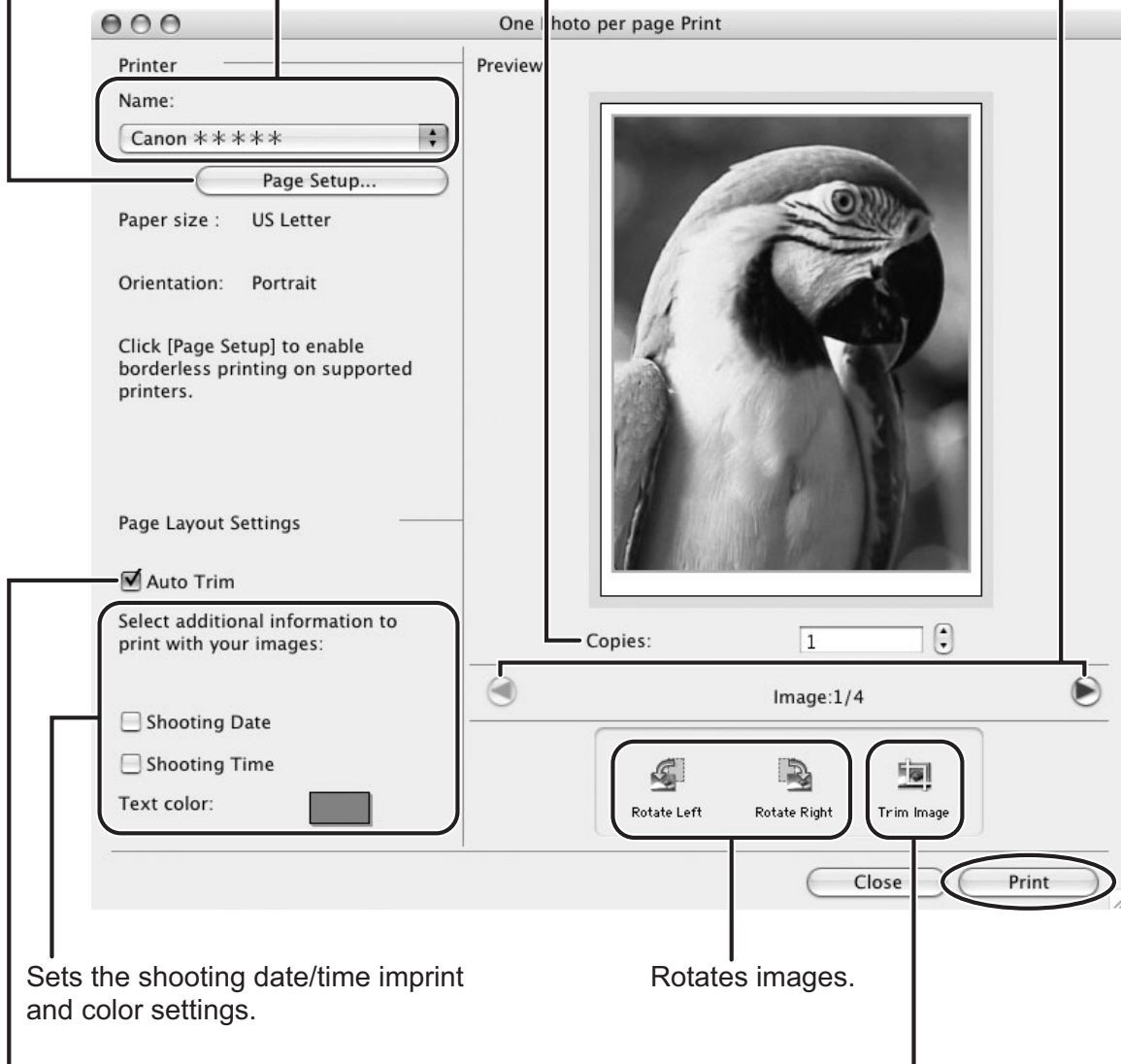
When you have selected [Print All Images]:

Sets the paper size settings.

Selects the printer.

Click this button to switch between still images if multiple images are selected.

Sets the number of print copies of the displayed image.

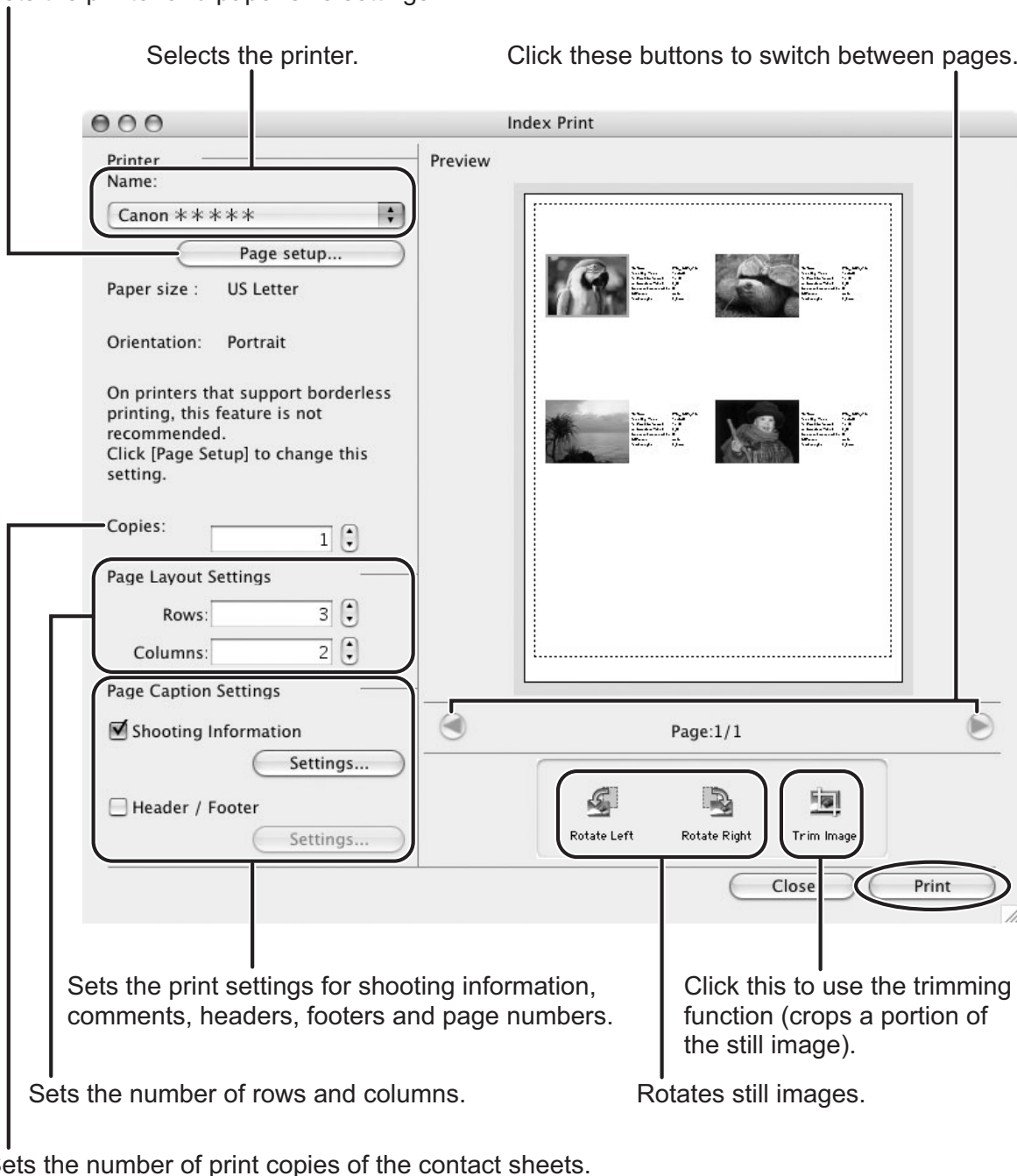


Sets the auto trim (crops image edges according to the page proportions) or borderless print settings.

Click this to use the trimming function (crops a portion of the still image).

When you have selected [Print Contact Sheet of All Images]:

Sets the printer and paper size settings.

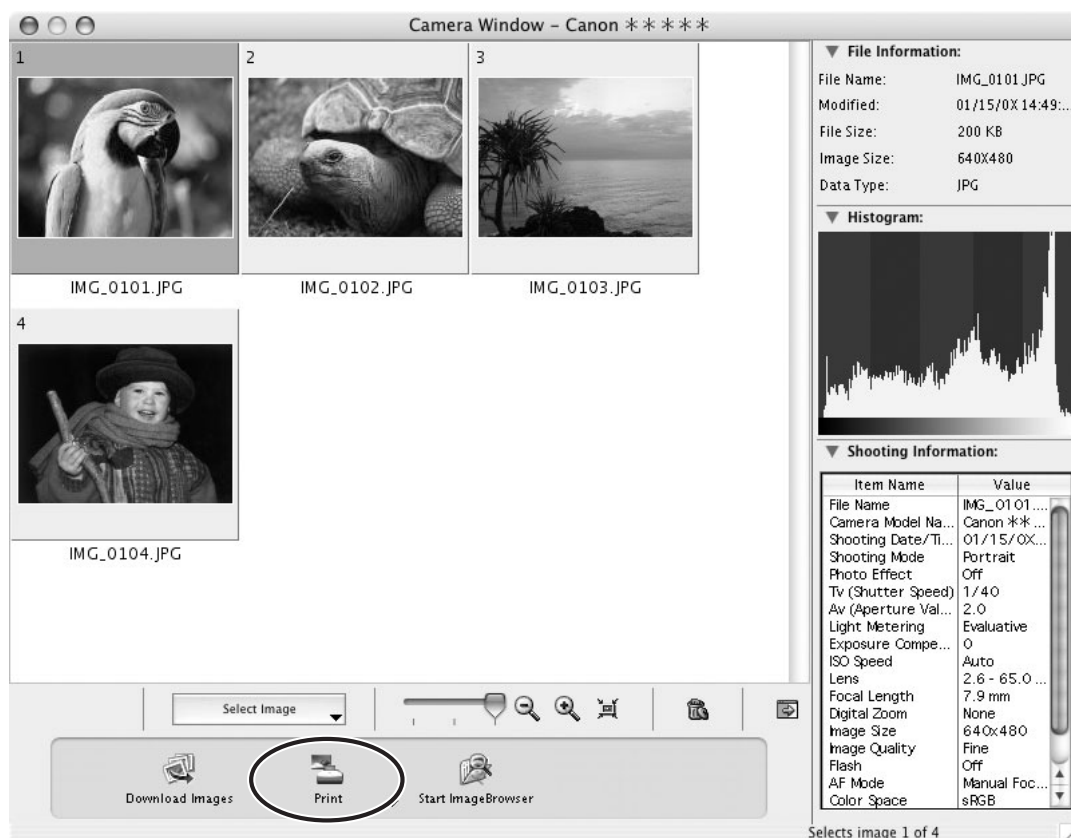


When you have selected [Print according to DPOF settings]:

- The selected still images will be printed according to the number of copies set with the camcorder. The same window described in the previous section *When you have selected [Print All Images]:* (38) will be displayed.

When you have selected [Select image and print]:

- If you selected [Select image and print], the following window will be displayed. Select still images you wish to print, and click [Print]. If you selected [Contact Sheet Print], the same window described in the previous section *When you have selected [Print Contact Sheet of All Images]:* (📖 39) will be displayed. If you selected [One Photo Per Page Print], the same window described in the previous section *When you have selected [Print All Images]:* (📖 38) will be displayed instead. Set the print settings and print the still images.



5 When the print window opens, click [Print].

6 When the printing finishes, click  to close the window.

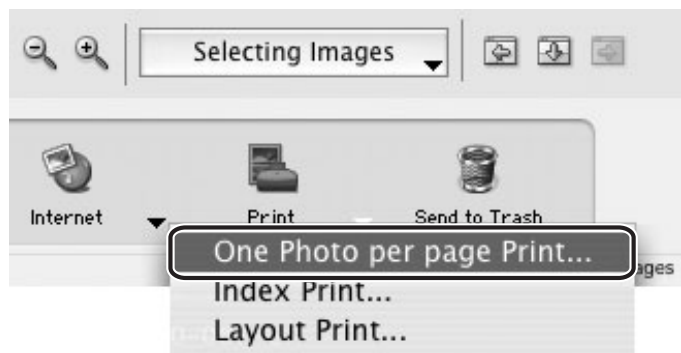
Printing Still Images Downloaded to the Computer

You can select one of the following 3 methods to print still images downloaded to the computer.

- [One Photo per page Print]
 - Prints one still image per page.
- [Index Print]
 - Prints selected images in rows with file names and image information.
- [Layout Print]
 - Allows you to lay out the selected still images in special arrangements and add text and decorations, printing them as one page in a fancy album.

■ [One Photo per page Print]

- 1** Select the still images you wish to print and click [Print] ▶ [One Photo per page Print] from the displayed menu.



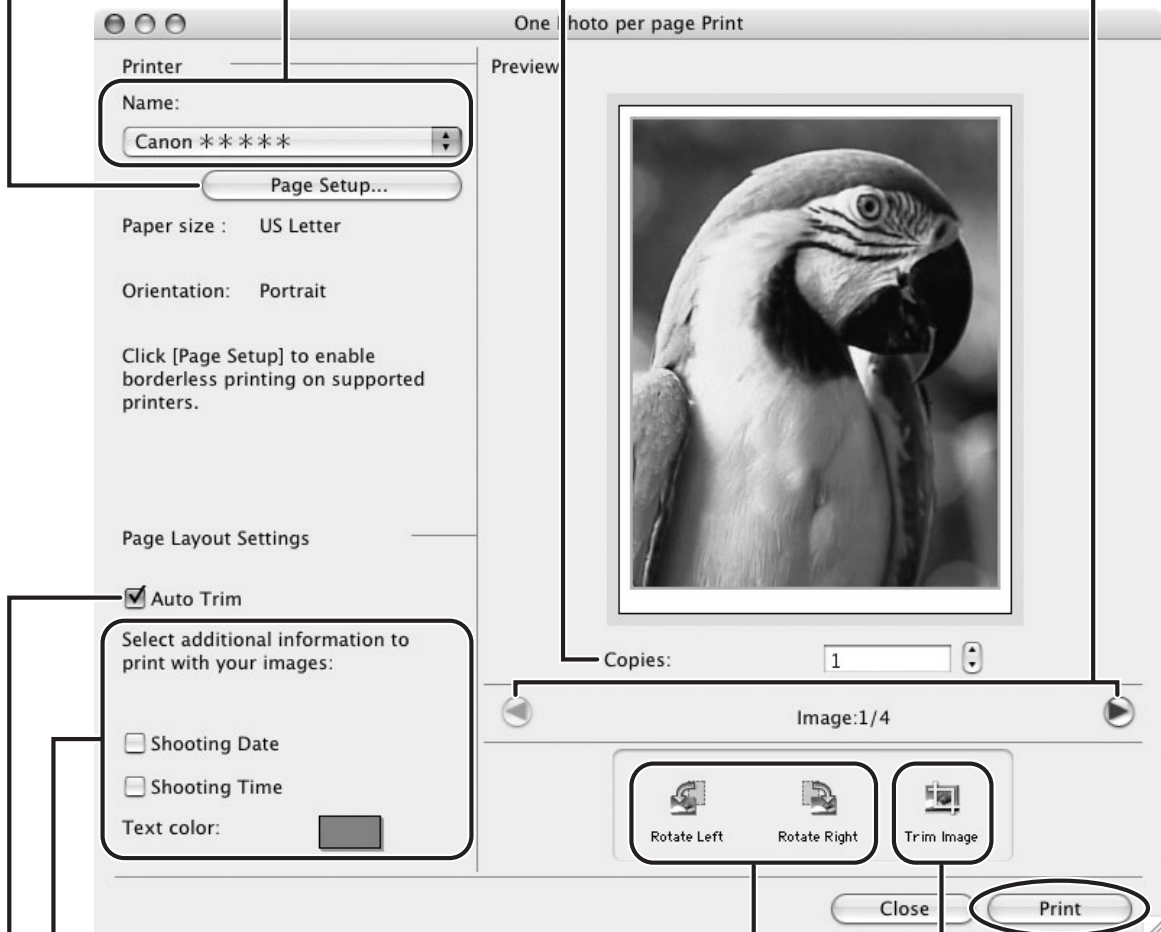
2 Specify the print settings and click [Print].

Sets the paper settings.

Selects the printer.

Click this button to switch between still images if multiple images are selected.

Sets the number of print copies of the displayed image.



Sets the shooting date/time imprint and color settings.

Sets the auto trim (crops image edges according to the page proportions) or borderless print settings.

Rotates still images.

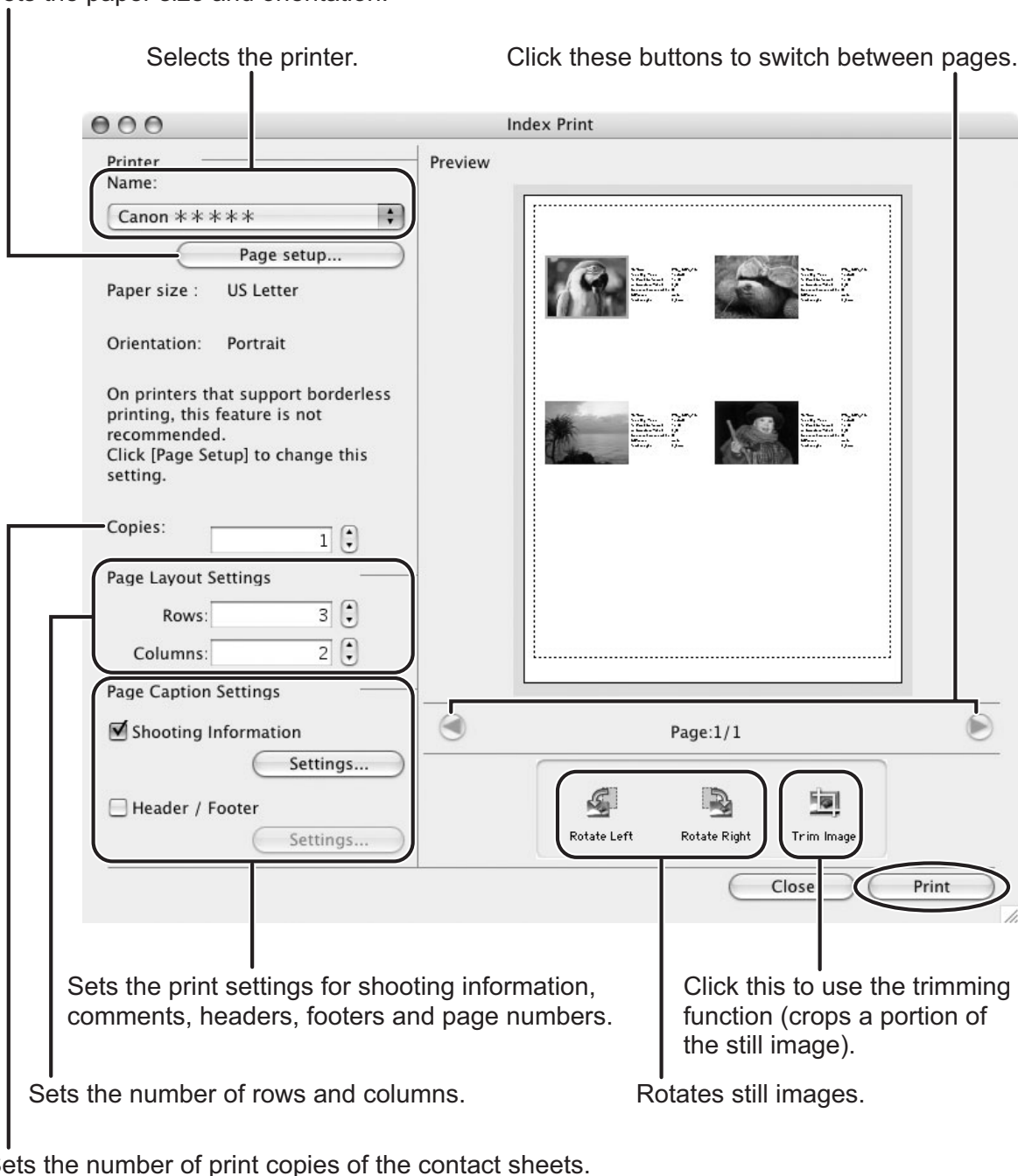
Click this to use the trimming function (crops a portion of the still image).

- 3** When the print window opens, click [Print].
 - 4** When the printing finishes, click  to close the window.
- [Index Print]
- 1** Select still images you wish to print and click [Print] ► [Index Print] from the displayed menu.



2 Specify the print settings and click [Print].

Sets the paper size and orientation.



3 When the print window opens, click [Print].

4 When the printing finishes, click to close the window.

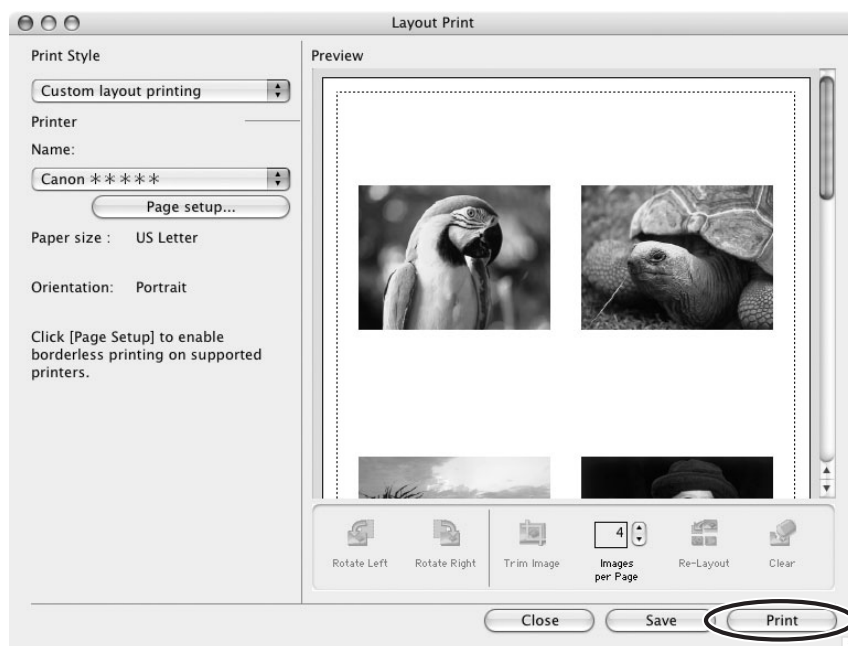
■ [Layout Print]


- You can select one of the following 3 layout print methods.
 - [Custom layout printing]:
Allows you to specify the size and location of the still images freely.
 - [Fixed photo size printing]:
Allows you to specify the size of the all still images.
 - [Tiled photo printing]:
Allows you to have the program lay out and print the specified number of images per page with no gaps between still images on the page.
- Selecting [Edit] ► [Add Text] allows you to write some text on a still image. You can move added text boxes on the still image by dragging them.
- Selecting [Edit] ► [Edit Header] allows you to insert a header.

1 Select still images you wish to print and click [Print] ► [Layout Print].



- 2 Select a print style from the pull-down menu and click [Print] after specifying the print settings.



- 3 When the print window opens, click [Print].
- 4 When the printing finishes, click  to close the window.

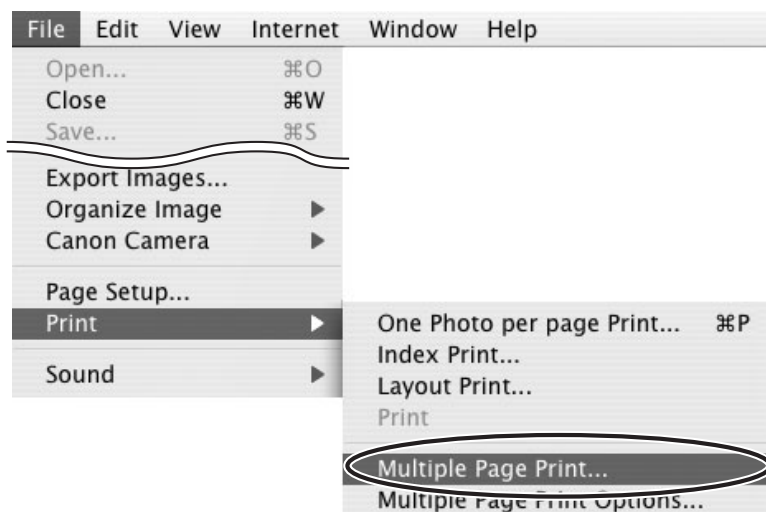
■ Multiple Page Printing

Multiple page printing is a function that enables you to print enlarged still images or panoramic images onto multiple pages.



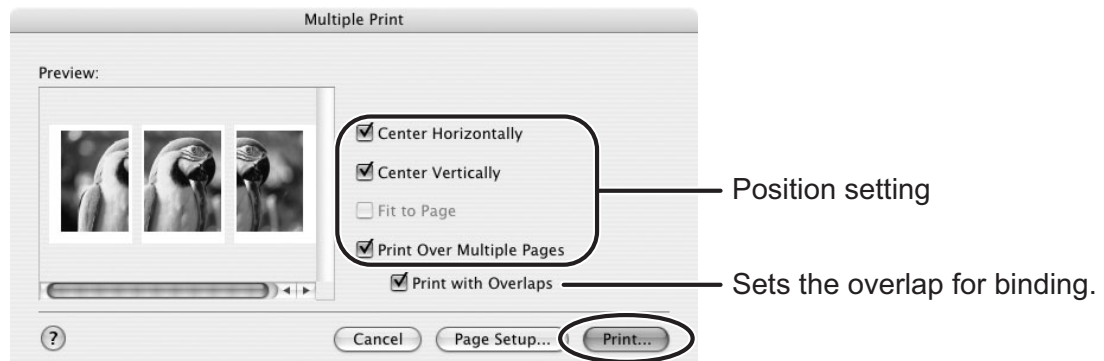
Your camcorder needs to support the Stitch Assist mode to record a panoramic image.

- 1 Select a still image for the multiple page printing.
- 2 Select [Print] ▶ [Multiple Page Print] from the [File] menu.



3 Specify the print settings and click [Print].

To enlarge a still image, you can click [Page Setup] and enter a new value at [Scale].



Selecting [Multiple Page Print Options] from the [File] menu allows you to specify the [Print Resolution]. The lower the resolution you set, the larger the image is printed and vice versa - the higher you set the print resolution, the smaller the image is printed.

Organizing Images

Applying Star Rating

- This task allows you to apply ratings to your images from one star to three stars. The star rating can be used as one of the search conditions, or for the selection of images to be displayed in the Browser Window.
- The default setting of the star rating is two stars.

1 Select the image to which you wish to apply the Star Rating.

2 Select [Change Star Rating] from the [Edit] menu.



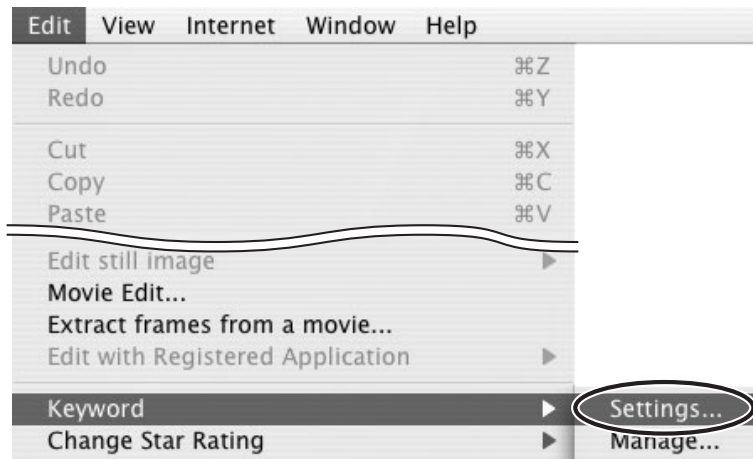
The default setting of the star rating is two stars.

Specifying the Keywords

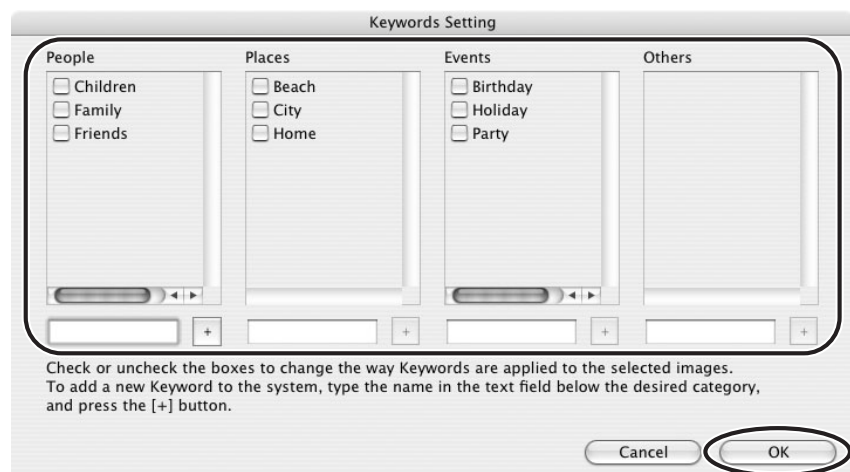
You can use keywords when searching for images.

1 Select an image to which you wish to apply the keyword.

2 Select [Keyword] ► [Settings] from the [Edit] menu.



3 Place a check mark next to the keyword you wish to apply and click [OK].



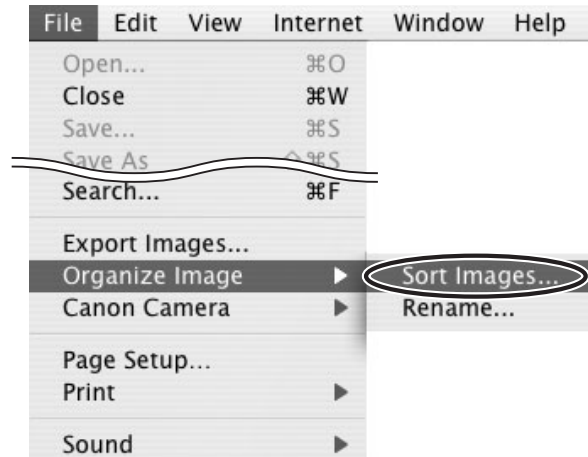
You can add and delete keywords, or change the keyword list in the [Manage Keywords] window by selecting [Keyword] ► [Manage] from the [Edit] menu.

Classifying the Images

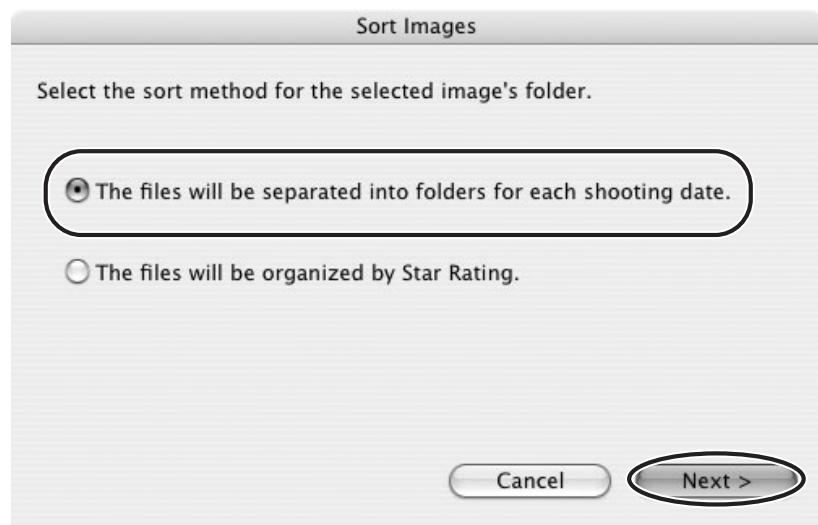
This task allows you to sort images into a folder according to the shooting date or star rating.

■ Sort by the Shooting Date

- 1 Select the images you wish to classify and select [Organize Image] ▶ [Sort Images] from the [File] menu.

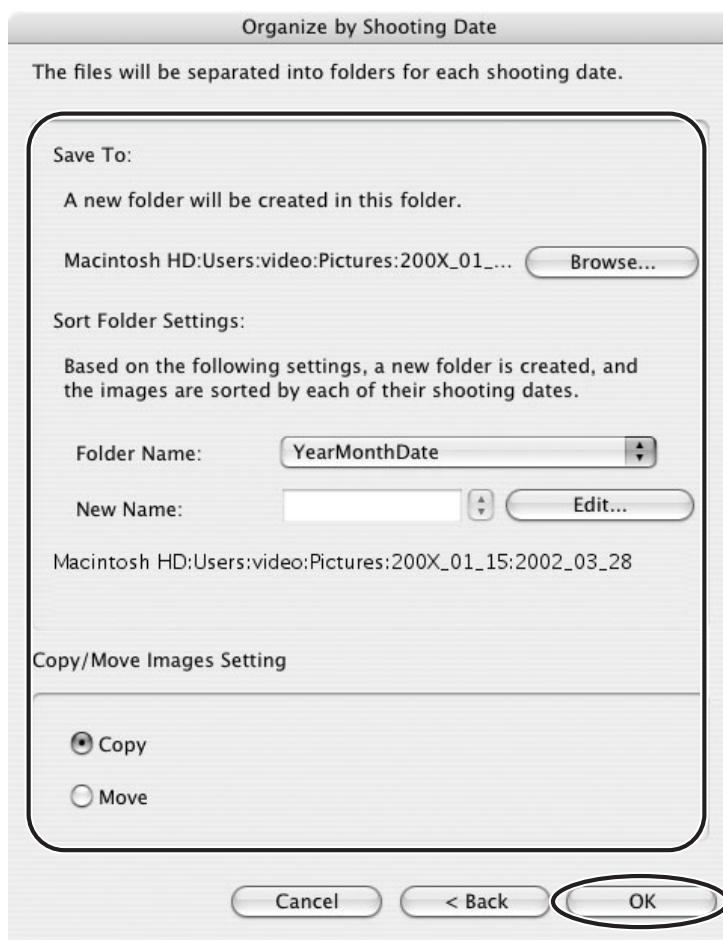


- 2 Select [The files will be separated into folders for each shooting date.] and click [Next].



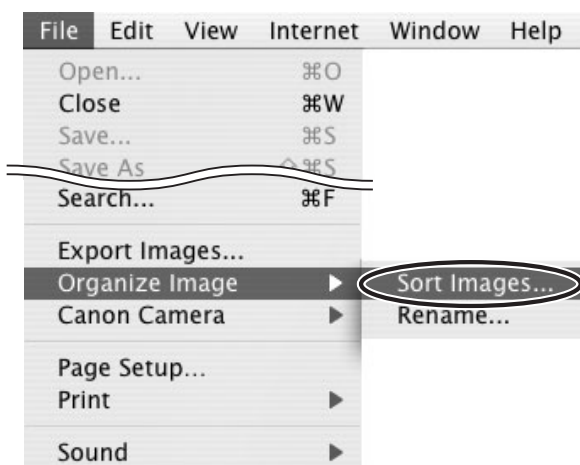
3 Specify the sort settings and click [OK].

The selected images are classified into the specific folder.

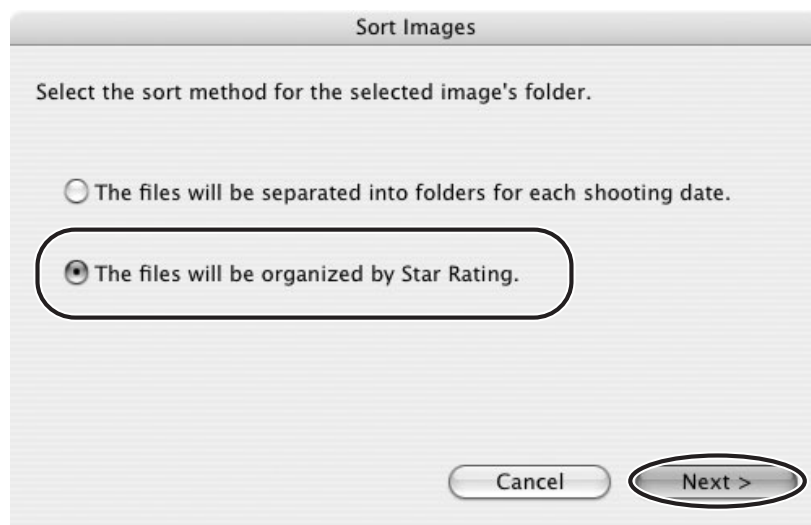


■ Sort by the Star Rating

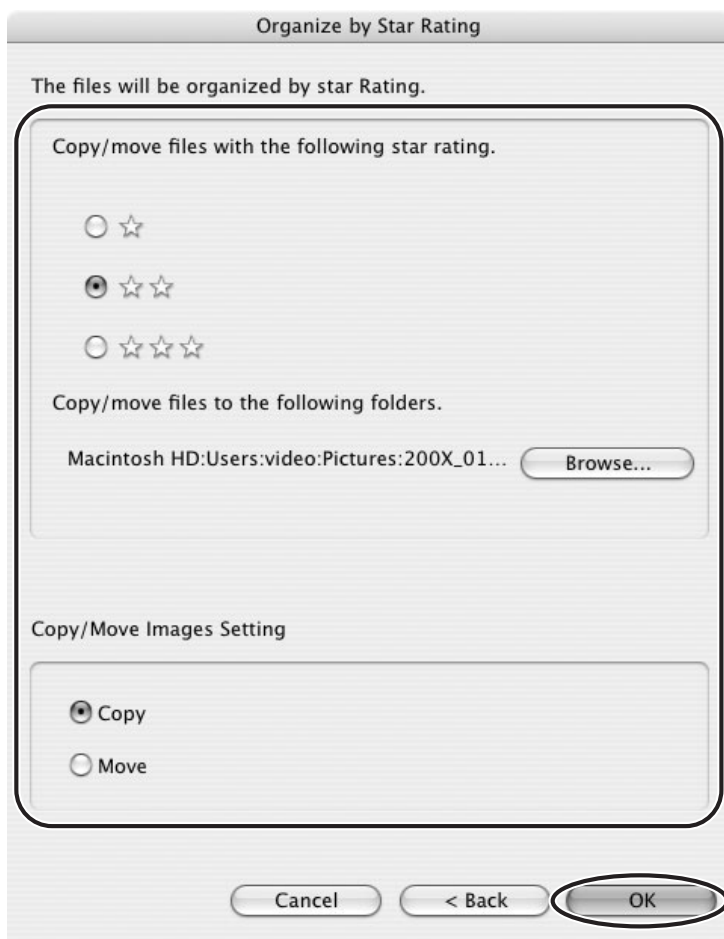
1 Select the images you wish to classify and select [Organize Image] ▶ [Sort Images] from the [File] menu.



- 2** Select [The files will be organized by Star Rating.] and click [Next].



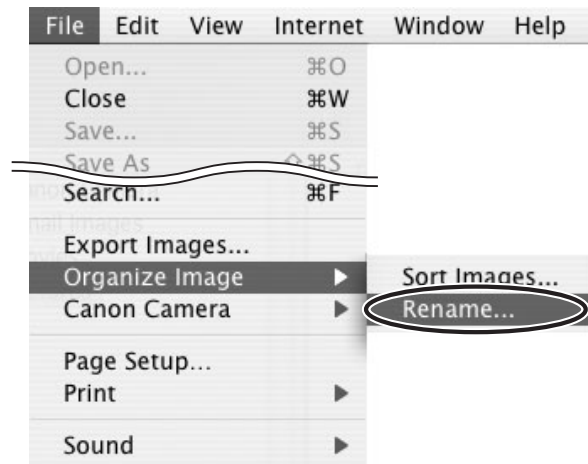
- 3** Specify the sort settings and click [OK].



Renaming Multiple Files

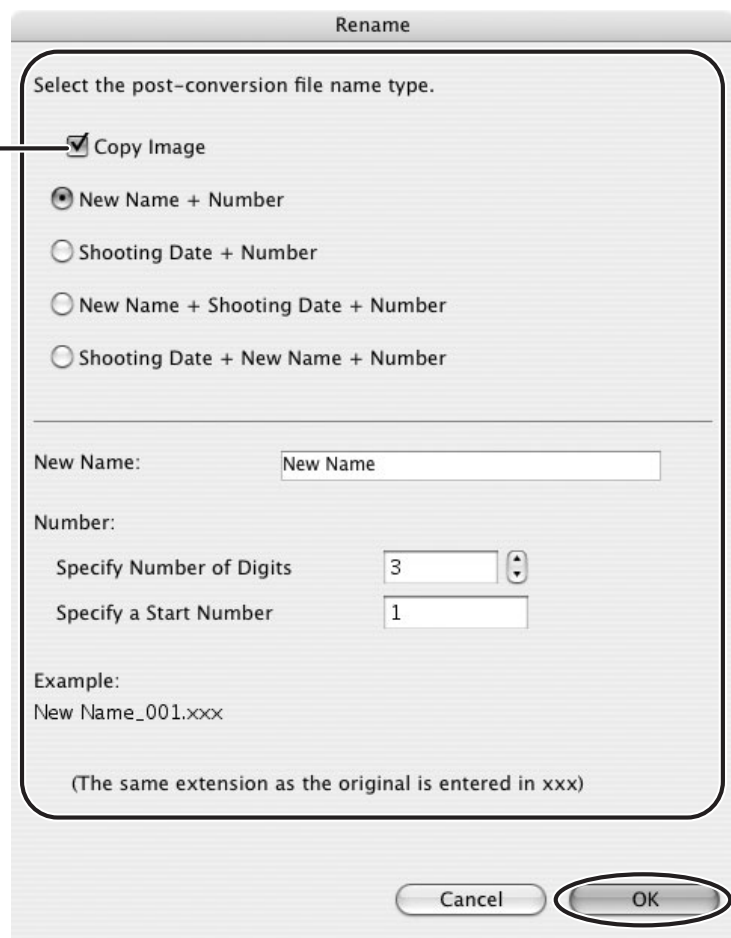
This task allows you to rename multiple files at the same time, or to rename and copy multiple files.

- 1** Select the images you wish to rename and select [Organize Image] ► [Rename] from the [File] menu.



- 2** Specify the settings and click [OK].
The images are renamed according to the settings specified.

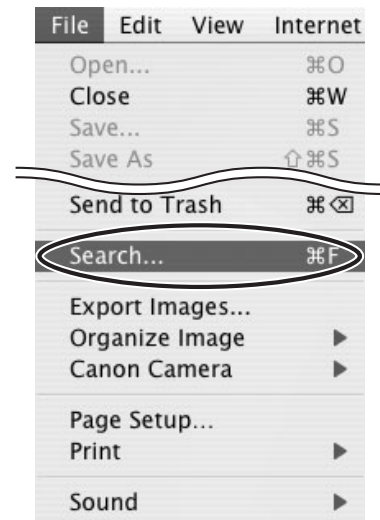
Placing a check mark here makes copies of images with new names. The name of the original images will not be changed.



Searching for Images

This task allows you to search for images by star rating, modification date, shooting date, comment or keywords.

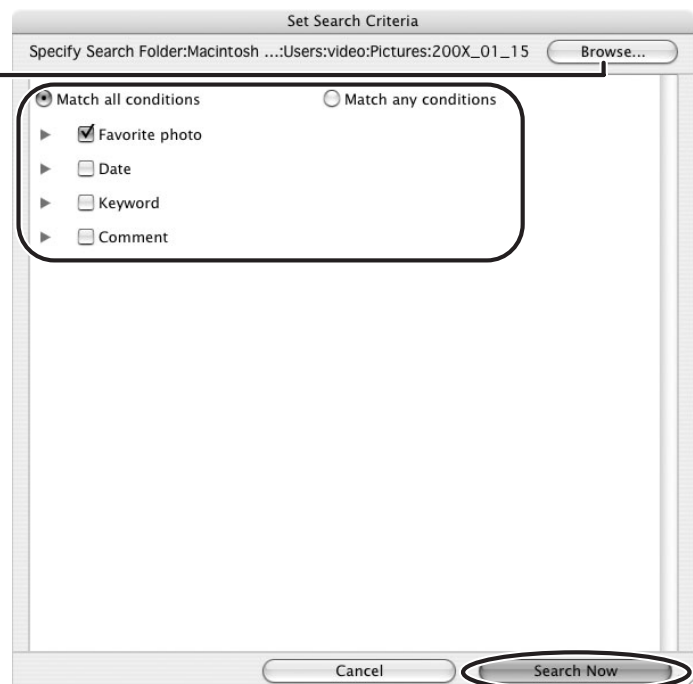
- 1 Select a folder in the explorer view.**
- 2 Select [Search] from the [File] menu.**



- 3 Specify the search conditions and click [Search Now].**

- The search results are displayed as thumbnails.
- Select at least one search condition.
- Clicking the ► icon discloses the parameters of settings.

Clicking this button allows you to specify a folder.

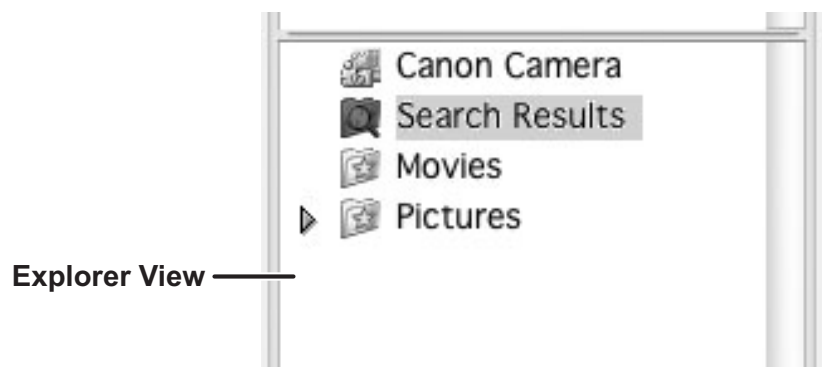


4 Click [Finish].

- To change the search parameters and perform another search, click [Back] and repeat steps 3-4.



- The images of the search result are displayed in the [Search Results] folder. You can print or copy these images to another folder.



The searched images will remain in this folder until ImageBrowser is closed or another search is performed, but if you delete an image in this folder, the corresponding original image will be deleted as well.

Creating a Movie from the Still Images

Editing Movies (MovieEdit Task)

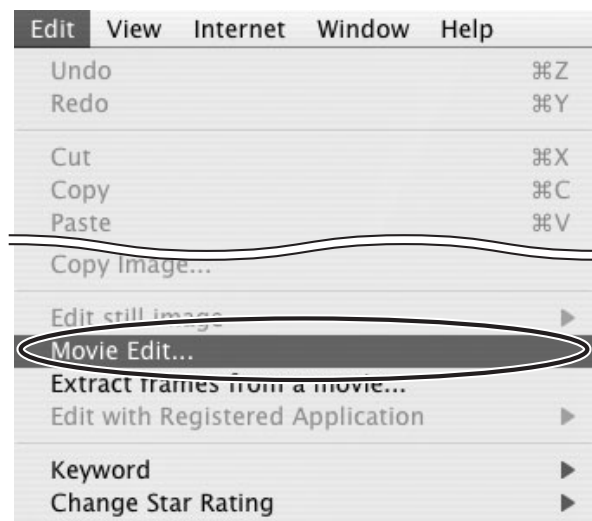
You can link still images, insert text and background music, and add effects.



If you have an AVI file in your computer, you can use this function to edit the file.

1 Select images in the Browser area.

2 From the [Edit] menu, select [Movie Edit].



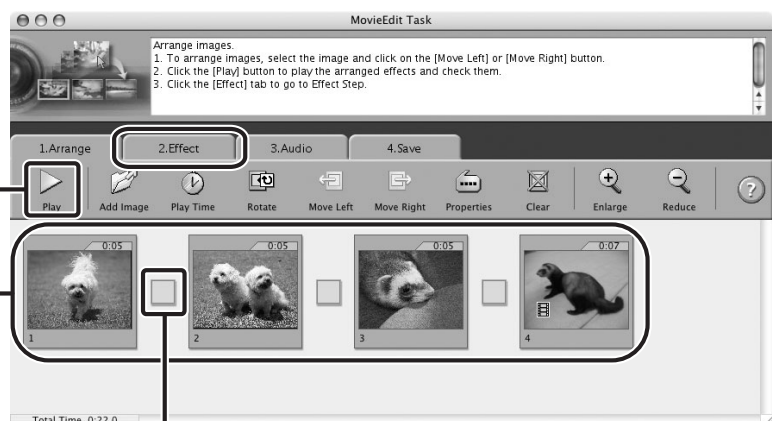
3 Arrange images and click [2.Effect].

- To change the order of images, select an image and click [Move Left] or [Move Right].
- Operational instructions are displayed in the upper section of the window.

Plays back the movie being edited.

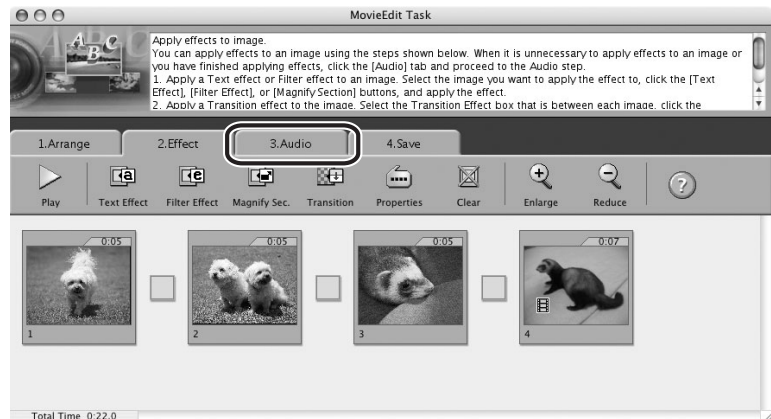
Storyboard Area
Displays thumbnails of the selected images. The images will be linked from left to right.

Transition Box
Displays the symbol of the transition effect between linked images.



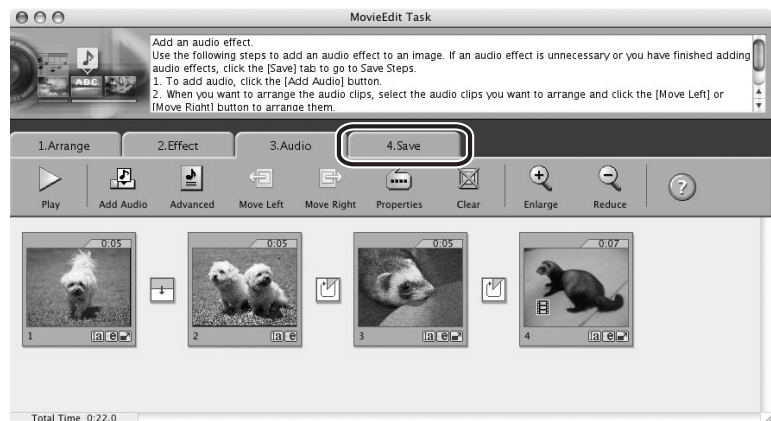
4 Apply effects to the images and click [3.Audio].

To set a transition effect, you need to select a transition box in the Storyboard Area.



5 Set the audio and click [4.Save].

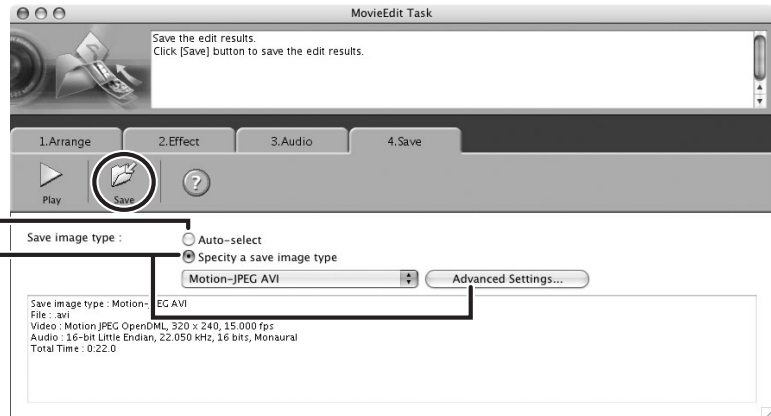
You can add an MP3, AIFF or WAV file as audio.



6 Select a file type and click [Save].


- Select the destination folder, input the file name and click [Save].
- To exit MovieEdit Task, from the [MovieEdit Task] menu, select [Quit MovieEdit Task].

Select this to save as Motion JPEG compressed AVI.




Select this to save as either Motion JPEG compressed AVI or QuickTime movie.

Playing Back Movies

In the CameraWindow and Browser Area, movies are displayed with the first scene as a still image with a  (movie) icon.

1 In the Browser Area, double-click a thumbnail with a (movie) icon.

Clicking the  (Play) icon at the bottom of the image in the Main Window also plays back the movie.



2 Click the icon in the [Image Viewer] window.

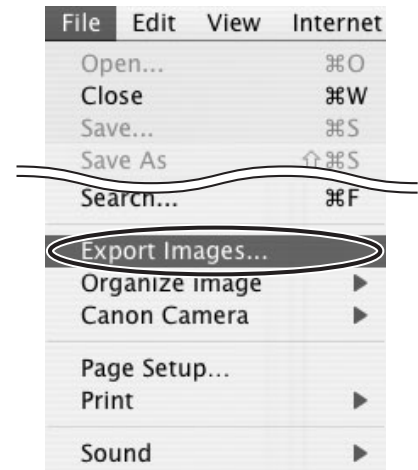


Exporting Images

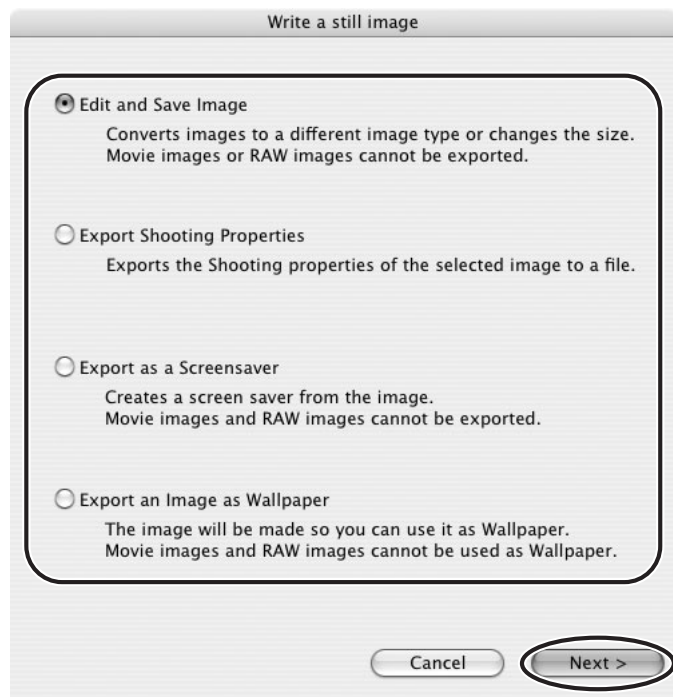
Changing the File Type and Saving

This task allows you to change the size, resolution or data of selected still images and save them as new files and allows saving the shooting properties of the still image to a text file or copying the still images with new names. Furthermore, you can export still images for use as a screen saver or a wallpaper.

- 1 **Select an image you wish to export and [Export Images] from the [File] menu.**



- 2 **Select exporting type and click [Next].**

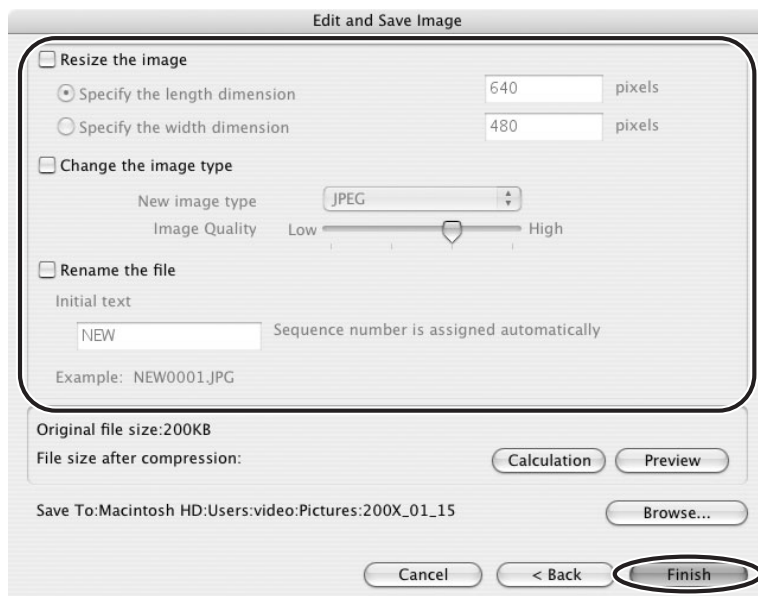


3 Specify the export settings and click [Finish].

The window varies depending on the selected export type in step 2.

When you have selected [Edit and Save Image]:

You can convert still images to another file type, resize and save them as new files. You can select the file type from BMP, PICT, JPEG and TIFF. You can also specify a prefix to be added to the exported still images.



When you have selected [Export Shooting Properties]:

You can select information you wish to export and save as a text file.



When you have selected [Export as a Screensaver]:

You can export and save the image as a screen saver.



When you have selected [Export an Image as Wallpaper]:

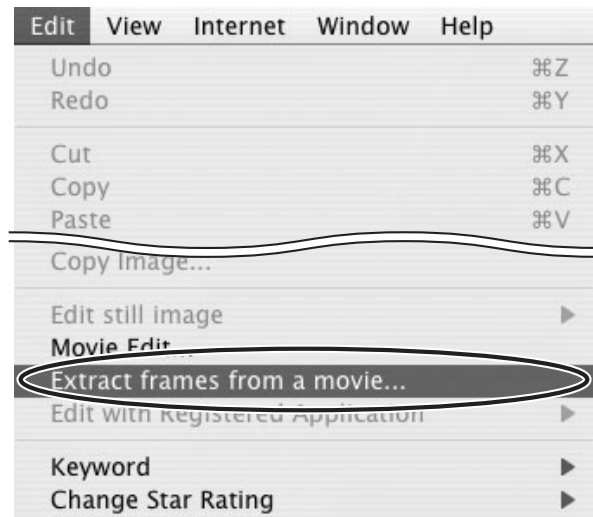
You can export and save the image as a desktop wallpaper. This task cannot be performed if you have selected multiple images.



Extracting Still Images from Movies (MovieFrame Task)

You can extract still images from movies and save them as image files.

- 1 Select a movie and select [Extract frames from a movie] from the [Edit] menu.**

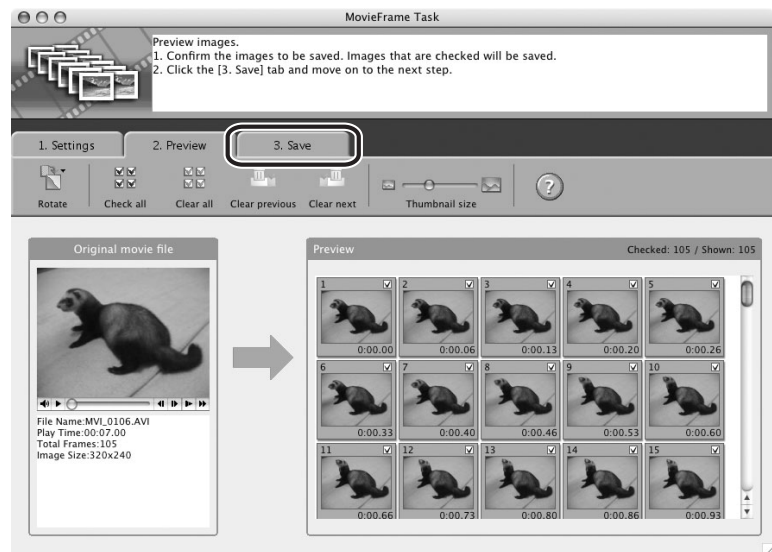


- 2 Set the still image extraction method and click [2. Preview].**

- [Extract all frames]: Extracts all frames in the movie as still images.
- [Specify an interval and extract frames]: Extracts frames as still images from a specified frame range or time interval.
- [Specify the number of copies and extract frames]: Extracts a specified number of still images from the entire movie. The extraction interval is calculated based on an equal distribution of the specified number of still images.
- [Extract a specified image]: Extracts still images from scenes that catch your attention.



3 Confirm the still images which will be extracted (images with check marks) and click [3. Save].



4 Specify the file name and the folder where you wish to save it and click [Save].

- Select the destination folder and click [Open] or [Choose].
- To exit MovieFrame Task, from the [MovieFrame Task] menu, select [Quit MovieFrame Task].



Adding Still Images to the Memory Card in the Camcorder

You can add still images (JPEG) from the computer to a memory card in the camcorder.



When using this function, you cannot add the still images to a memory card using a card reader/writer. Insert the card into the camcorder to add images.

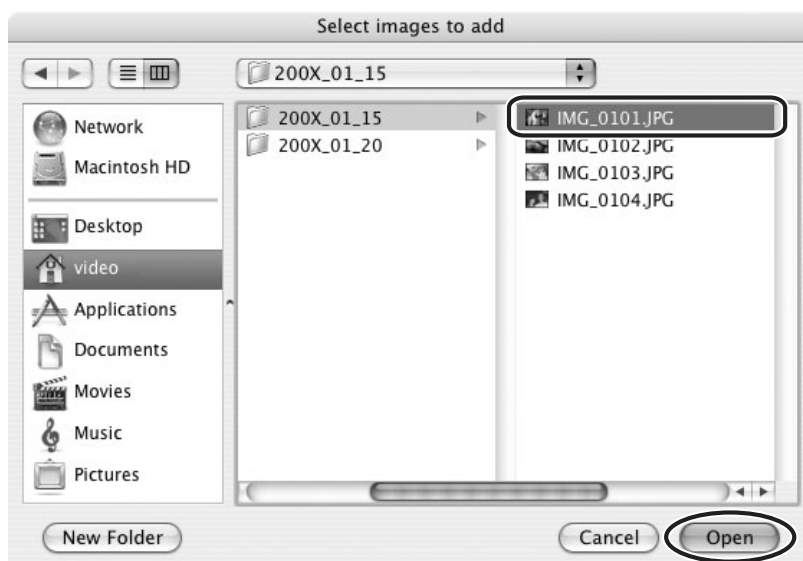
■ Adding Still Images to the Memory Card

- 1** Connect the camcorder to the computer (24).
- 2** Click the [Set to Camera] tab in the Camera Control window, and [Uploads images to the camera].



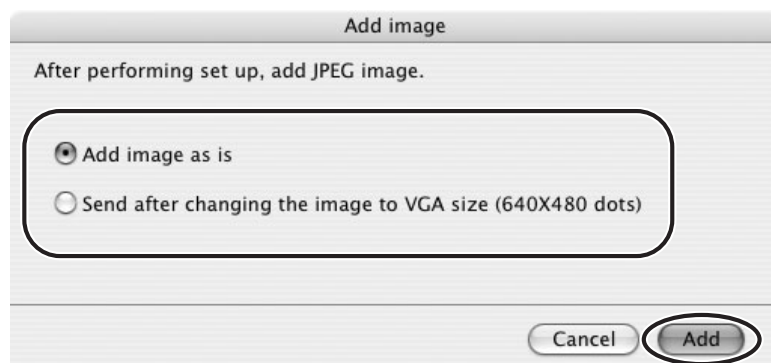
3 Select the still image you wish to add and click [Open].

You can check the selected image by clicking the file name.



4 In the Add image window, select the image size and click [Add].

- The selected images will be recorded to the memory card.
- When recording is complete, the images will appear in the CameraWindow.

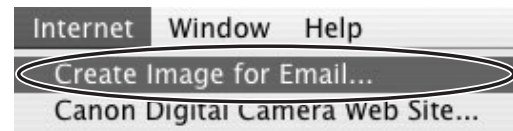


Using Various Functions

Attaching Images to E-mail Messages

You can attach selected images to an e-mail message.

- 1 Select the images you wish to send in the Browser Area.**
- 2 From the [Internet] menu, select [Create Image for Email].**

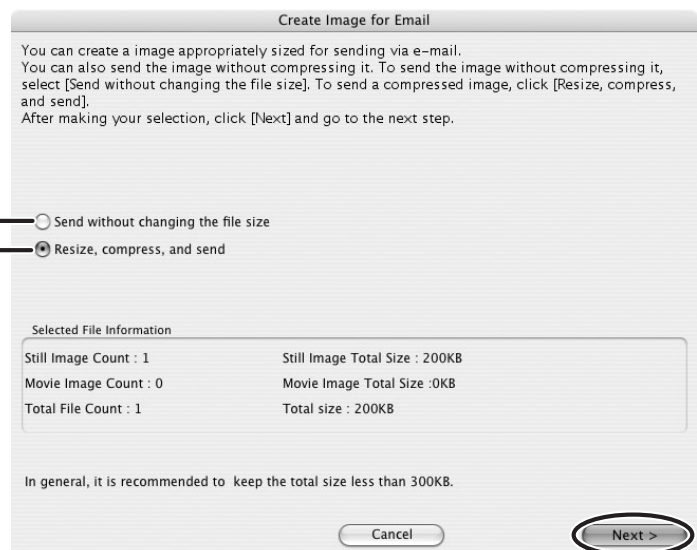


- 3 Specify the image size and click [Next].**

When you select [Send without changing the file size], skip on to step 5.

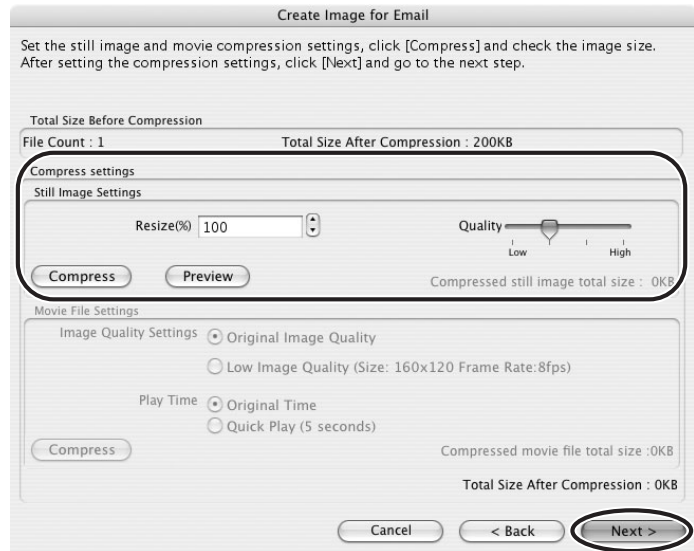
Select this if you do not wish to reduce the size of the still image.

Normally, select this option.



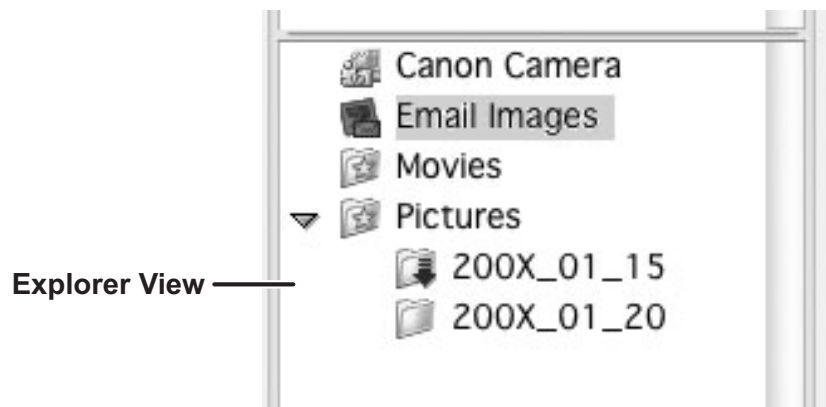
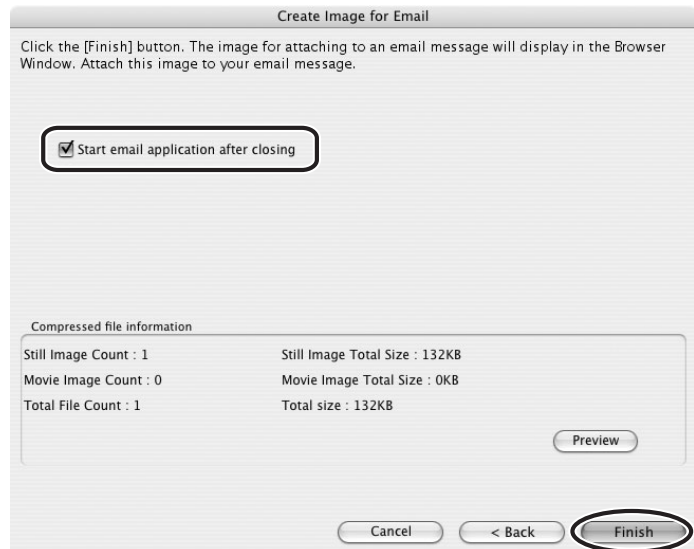
4 Specify the reduction ratio and image quality and click [Next].

- [Resize(%)] : Select the reduction ratio relative to the original size of the image.
- [Quality] : Lowering this setting will lower image quality but reduce file size.
- [Compress] : Use it to check the file size when you actually compress the image. The file size appears next to “Total Size After Compression”.



5 Select whether you wish to start your e-mail software and click [Finish].

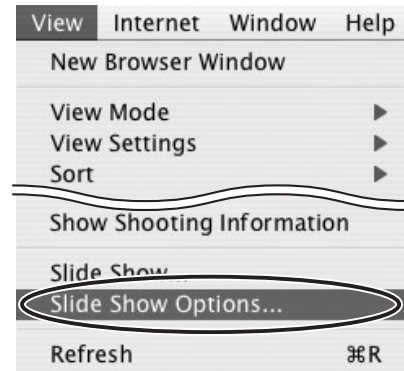
- If you have selected [Start email application after closing], your e-mail software starts automatically. Open a new e-mail message and attach the image. With some types of e-mail software, you can attach images to e-mail messages simply by dragging them from the Browser Area to the new message window.
- Click [Preview] to check the changed image.
- The image will be saved to the [Email Images] folder in the explorer view section.



- You can set the e-mail software to start automatically in step 5. Note that some e-mail software may not start automatically. For details, refer to the Help menu of the OS you are using.
- The images in the [Email Images] folder are saved in the following location: Open the [Users] folder, followed by [User login name], [Library], [Preferences], [ImageBrowserUserData], and [Mail].

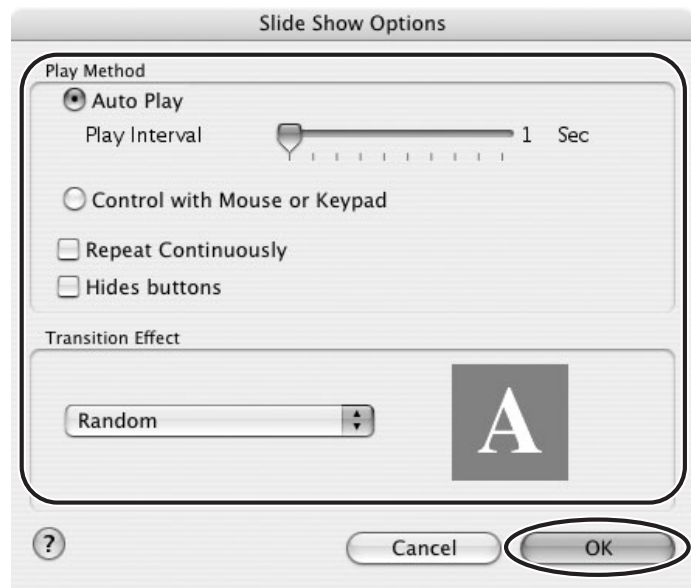
Running a Slide Show

1 From the [View] menu, select [Slide Show Options].



2 Select the slide show settings and click [OK].

- [Auto Play]: Select the interval by sliding the control under [Play Interval] (from 1 to 30 seconds).
- [Control with Mouse or Keypad]: Advances the slide show manually with the mouse or keyboard.
- [Repeat Continuously]: Runs the slide show in a loop.
- [Hides buttons]: Hides the buttons during the slide show.
- [Transition Effect]: Select the transition effect to be used when moving from one slide to another. When you select an effect, you can check the effect in the preview window.



3 Select the images and select [Slide Show] from the [View] menu.

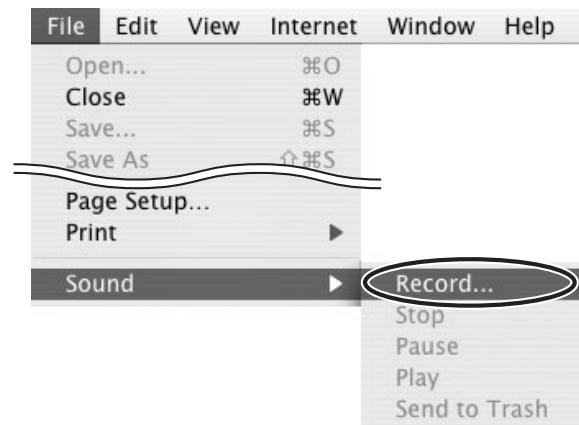
Click  on the lower right of the screen to end the slide show.

Adding Sound to a Still Image

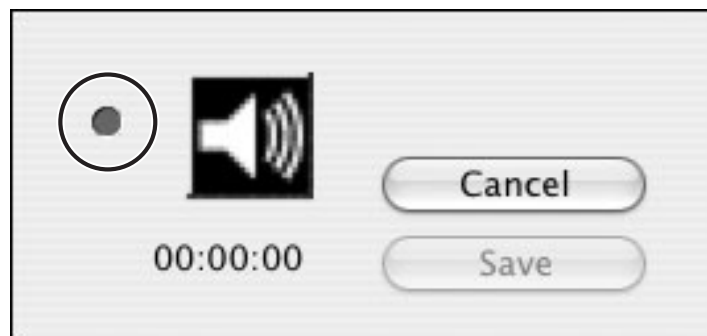
- To add sound to still images, use the Mac OS recording function. Depending on the computer, you may need to connect peripherals such as microphones. Check if your computer settings allow recording.
- The sound cannot be played back on the camcorder.

1 In the Browser Area, select a still image and select [Sound] ▶ [Record] from the [File] menu.


The recording window appears.




2 Click and start recording when the [Save] button is enabled.



3 Click [Save] to stop recording.

-  appears on the still image.
- The sound file will be copied in AIFF type (extension “.AIF”) to the same folder as the still image.
- To play back the sound, select an image with a sound icon and select [Sound] ▶ [Play] from the [File] menu.



- To remove sound from a still image, select [Sound] ▶ [Send to Trash] from the [File] menu.  disappears and the copied sound file will be deleted.
- While playing back the sound, select [Sound] ▶ [Pause] or [Stop] to control the status.

Reviewing and Changing the Owner Name of the Camcorder

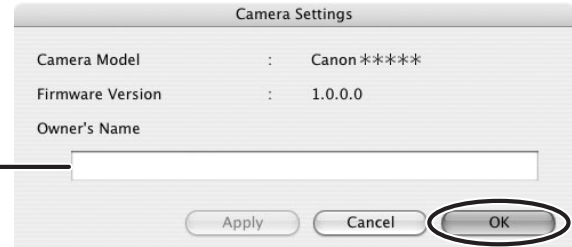
You can change and confirm the owner's name of the camcorder.

- 1 Connect the camcorder to the computer (24).**
- 2 Click the [Set to Camera] tab and click [Confirms/changes camera settings] in the Camera Control window.**



- 3 Enter the camcorder's owner's name and click [OK].**

Input the camcorder's owner's name here (up to 31 characters).



Uninstalling the Software

Uninstall the software when you wish to delete it from your computer or when reinstallation is required to fix corrupted files.

Uninstalling ImageBrowser




Move the program's folder and subfolders into the Trash to uninstall programs such as ImageBrowser.






- If the program folders contain subfolders into which images have been saved, be careful not to accidentally delete those subfolders.
- For more details on how to uninstall ImageBrowser, refer to Read Me.

Troubleshooting

Connection

- ? Camcorder is not recognized when connected to the computer.**
 - ➔ **There is no memory card in the camcorder.**
Insert a memory card into the camcorder.
 - ➔ **The camcorder is not set to the correct mode.**
Turn the POWER switch to ON and change the camcorder mode to PLAY by sliding the POWER switch down. Move the  /  switch to .
 - ➔ **Camcorder is not correctly connected to the computer.**
Read *Connecting the Camcorder to a Computer* (📖 24) and check the connection.
Ensure that you are using the correct cable and that its connectors are in good shape.
 - ➔ **If you are experiencing operational problems, detach the USB cable from the camcorder and computer and terminate the connection. Restart the computer and then reconnect the camcorder.**

ImageBrowser Operation

- ? Cannot download still images.**
 - ➔ **The camcorder is not set to the correct mode.**
Turn the POWER switch to ON and change the camcorder mode to PLAY by sliding the POWER switch down. Move the  /  switch to .
- ? Image files or folders do not appear in ImageBrowser.**
 - ➔ **Images or folders shown in ImageBrowser and the actual file contents may be different.**
Click the [View] menu and select [Refresh].



CANON INC.

U.S.A. ————— Canon U.S.A., Inc.

Canon Customer Care Center
Tel (US): 1-800-828-4040
(Mon.-Fri., 9 AM to 8 PM Eastern Time)

CANADA ————— Canon CANADA Inc.

Tel (Canada): 1-800-OK-CANON (1-800-652-2666)

ASIA ————— Canon Hongkong Co., Ltd.

19/F., The Metropolis Tower, 10 Metropolis Drive,
Hung Hom, Kowloon, Hong Kong
Phone: 852-2170-2828
Fax: 852-2723-9684

The information in this manual is verified as of 1 August 2007.