



Canon

Software Starter Guide

(For the Canon Digital Camera Solution Disk Version 26)

You must install the software bundled on the Canon Digital Camera Solution Disk before connecting the camera to the computer.



1 Install the software.



Windows → p. 11
Macintosh → p. 50

2 Connect the camera to the computer.



- This guide explains how to install the software programs and briefly introduces their functions and operating procedures.
- Please read the software license agreement in this guide before using the software. By using the software, you agree to be bound by the terms of the agreement.

Canon

SAFETY PRECAUTIONS

The precautions noted within this guide are intended to instruct you in the safe and correct use of the products and to prevent injuries or damage to yourself, other persons and property. Please read and ensure that you understand them before proceeding to other sections of the guide.

⚠ Warnings This symbol indicates topics that could lead to death or serious injury if ignored or handled incorrectly.

⚠ Warnings

- Do not play the supplied CD-ROM(s) in any CD player that does not support data CD-ROMs. Playing the CD-ROM(s) in an audio CD player (music player) could damage the speakers. It is also possible to suffer from hearing loss from listening with headphones to the loud sounds of a CD-ROM played on a music CD player.

Disclaimer

- While every effort has been made to ensure that the information contained in this guide is accurate and complete, no liability can be accepted for any errors or omissions. Canon reserves the right to change the specifications of the hardware and software described herein at any time without prior notice.
- No part of this guide may be reproduced, transmitted, transcribed, stored in a retrieval system, or translated into any language in any form, by any means, without the prior written permission of Canon.
- Canon makes no warranties for damages resulting from corrupted or lost data due to a mistaken operation or malfunction of the camera, the software, the CompactFlash™ cards (CF cards), personal computers, peripheral devices, or use of non-Canon CF cards.

Trademark Acknowledgments

- ArcSoft, the ArcSoft logo and ArcSoft PhotoStudio are trademarks or registered trademarks of ArcSoft, Inc.
- Adobe is a trademark of Adobe Systems Incorporated.
- CompactFlash is a trademark of SanDisk Corporation.
- Macintosh, Mac OS and QuickTime are trademarks of Apple Computer Inc., registered in the United States and other countries.
- Microsoft® and Windows® are either registered trademarks or trademarks of Microsoft Corporation in the United States and/or other countries.
- Other names and products not mentioned above may be registered trademarks or trademarks of their respective companies.

Copyright © 2005 Canon Inc. All rights reserved.

Canon Customer Support

For Canon Customer Support contacts, please see the Canon Limited Warranty supplied with your camera.

ArcSoft Customer Support

North America

46601 Fremont Blvd., Fremont, CA 94538

Tel: (510) 440-9901 (Mon. - Fri., 8:30 AM - 5:30 PM PST)

E-mail: support@arcsoft.com

Other Regions

Please see the ArcSoft web site: <http://www.arcsoft.com/maininternational.html>.

READ CAREFULLY BEFORE USING

Canon Software License Agreement

IMPORTANT - READ THIS AGREEMENT BEFORE USING THE SOFTWARE ON THE CD-ROM IN THIS BOX. BY USING THE SOFTWARE, YOU AGREE TO BE BOUND BY THE TERMS OF THIS AGREEMENT.

This is a license agreement (the "Agreement") between you and Canon Inc. ("Canon").

IF YOU DO NOT AGREE TO THE TERMS AND CONDITIONS OF THIS AGREEMENT, DO NOT USE THE SOFTWARE PROGRAM ON THE CD-ROM (INCLUDING ALL SOUND AND IMAGE DATA) AND THE USER MANUAL IN THIS BOX (COLLECTIVELY, THE "SOFTWARE") AND PROMPTLY RETURN THE SOFTWARE TO YOUR POINT OF PURCHASE FOR A REFUND.

In consideration of the right to use the SOFTWARE, you agree to abide by the terms and conditions of this Agreement.

1. **LICENSE:** Canon grants you the personal, non-exclusive right to use the SOFTWARE only on a single computer. You may physically transfer the SOFTWARE from one computer to another provided that the SOFTWARE is used on only one computer at a time. You shall not install or use the SOFTWARE on a network, multiple CPU, multiple site arrangement, or any other hardware configuration where the SOFTWARE is accessible to more than one CPU or to more than one user.

With respect to the sound and image data ("Data") contained in the Software, which are to be downloaded to the applicable Canon digital camera product, Canon grants you a personal, non-exclusive license to use the Data on a single Canon digital camera product only.

YOU SHALL NOT ASSIGN, SUBLICENSE, RENT, LEASE, LOAN, CONVEY OR OTHERWISE USE, TRANSFER, COPY, TRANSLATE, CONVERT TO ANOTHER PROGRAMMING LANGUAGE, ALTER, MODIFY, DECOMPILE OR DISASSEMBLE THE SOFTWARE, IN WHOLE OR IN PART, EXCEPT AS EXPRESSLY PROVIDED IN THIS AGREEMENT.

2. **BACK-UP COPY:** You may make one copy of the SOFTWARE solely for back-up purposes, or copy the SOFTWARE onto the permanent storage device (e.g. a hard disk) of your computer and retain the original for back-up purposes. Any other copying of the SOFTWARE is a violation of this Agreement. You must reproduce and include the copyright notice on the back-up copy.
3. **SUPPORT AND UPDATES:** Neither Canon, nor its subsidiaries, dealers or distributors will be responsible for providing maintenance or support for use of the SOFTWARE. No updates, fixes or support will be made available for the SOFTWARE.
4. **LIMITED WARRANTY AND LIMITATION OF LIABILITY:** It is your responsibility to choose, maintain and match the hardware and software components of your computer system. Thus Canon does not guarantee uninterrupted service or correction of errors or that the functions or performance of the SOFTWARE will meet your requirements. THE SOFTWARE IS LICENSED ON AN "AS IS" BASIS AND WITHOUT WARRANTY OR CONDITION OF ANY KIND. The CD-ROM storing the SOFTWARE is warranted only against defective material under normal use for a period of ninety (90) days after purchase from an authorized Canon dealer as evidenced by your sales receipt. Your sole remedy for a defective CD-ROM shall be replacement of the same without charge when returned by you at your expense to your point of purchase and proven to be defective upon inspection. The Replacement CD-ROM will be warranted for the remainder of the original ninety (90) day warranty period of the defective CD-ROM. The limited warranty does not apply if the failure of the CD-ROM resulted from accident, abuse or misapplication of the SOFTWARE and shall not extend to anyone other than the original user of the SOFTWARE.

EXCEPT AS SPECIFICALLY SET FORTH IN THIS PARAGRAPH 4, CANON, CANON'S SUBSIDIARIES, DISTRIBUTORS AND DEALERS DISCLAIM ALL WARRANTIES, OR CONDITIONS, EXPRESS OR IMPLIED, INCLUDING ANY WARRANTY OR CONDITION OF MERCHANTABILITY OR FITNESS FOR A PARTICULAR PURPOSE, WITH RESPECT TO THE SOFTWARE.

NEITHER CANON NOR ANY OF CANON'S SUBSIDIARIES, DISTRIBUTORS OR DEALERS IS LIABLE FOR ANY DAMAGES HOWSOEVER CAUSED, INCLUDING WITHOUT LIMITATION, DIRECT, CONSEQUENTIAL OR INCIDENTAL LOSS OR DAMAGE INCLUDING LOSS OF PROFITS, EXPENSE OR INCONVENIENCE HOWSOEVER CAUSED OR ARISING OUT OF THE SOFTWARE OR THE USE THEREOF.

NEITHER CANON, NOR ANY OF CANON'S SUBSIDIARIES, DISTRIBUTORS OR DEALERS SHALL HAVE ANY OBLIGATION TO INDEMNIFY YOU AGAINST ANY CLAIM OR SUIT BROUGHT BY A THIRD PARTY ALLEGING THAT THE SOFTWARE OR THE USE THEREOF INFRINGES ANY INTELLECTUAL PROPERTY OF SUCH THIRD PARTY.

SOME STATES, PROVINCES OR LEGAL JURISDICTIONS DO NOT ALLOW THE EXCLUSION OF IMPLIED WARRANTIES, OR THE LIMITATION OR EXCLUSION OF LIABILITY FOR INCIDENTAL OR CONSEQUENTIAL DAMAGES, OR PERSONAL INJURY OR DEATH RESULTING FROM NEGLIGENCE ON THE PART OF THE SELLER, SO THE ABOVE DISCLAIMERS AND EXCLUSIONS MAY NOT APPLY TO YOU.

5. **TERM:** This Agreement is effective upon your using the SOFTWARE and remains in effect until expiration of all copyright interests in the SOFTWARE unless earlier terminated. You may terminate this Agreement by destroying the SOFTWARE. This Agreement will also terminate without notice to you if you fail to comply with any of the terms of this Agreement and you must then promptly return the SOFTWARE. In addition, Canon may enforce its other legal rights.
6. **U.S. GOVERNMENT RESTRICTED RIGHTS NOTICE:**
The SOFTWARE is a "commercial item," as that term is defined at 48 C.F.R. 2.101 (Oct 1995), consisting of "commercial computer software" and "commercial computer software documentation," as such terms are used in 48 C.F.R. 12.212 (Sept 1995). Consistent with 48 C.F.R. 12.212 and 48 C.F.R. 227.7202-1 through 227.72024 (June 1995), all U.S. Government End Users shall acquire the SOFTWARE with only those rights set forth herein. Manufacturer is Canon Inc./30-2, Shimomarucho 3-chome, Ohta-ku, Tokyo 146-8501, Japan.
7. **EXPORT RESTRICTIONS:** You agree to comply with all export laws and restrictions and regulations of the country involved, and not to export or re-export, directly or indirectly, the SOFTWARE in violation of any such laws and restrictions and regulations, or without all necessary approvals.
8. **SEVERABILITY:**
In the event that any provision of this Agreement is declared or found to be illegal by any court or tribunal of competent jurisdiction, such provision shall be null and void with respect to the jurisdiction of that court or tribunal and all the remaining provisions of this Agreement shall remain in full force and effect.
9. **CONTROLLING LAW:** The terms of this Agreement as it relates to purchases of the Software in the United States of America shall be governed and construed in all respects in accordance with the laws and regulations of the State of New York, without reference to choice of law principles. The terms of this Agreement as it relates to purchases of the Software in Canada shall be governed by the laws of the province of Ontario.
10. **OWNERSHIP:** All rights, including but not limited to copyrights and trade secret rights, to the SOFTWARE belong to Canon, its affiliated corporations and third party licensors. Your use of the SOFTWARE is subject to the laws of the United States, and Canada, and other applicable copyright and trademark laws, and nothing in this Agreement constitutes a waiver of the rights of Canon, its affiliated corporations and third party licensors under such laws. You only own the CD-ROM media in which the Software is stored. Except as expressly provided herein, no license or right, express or implied, is hereby conveyed or granted by Canon to you for any intellectual property of Canon. Nothing contained in Paragraph 1 shall be construed to give Canon any ownership rights in any images, graphics or textual material that you save in connection with the Software.
You may not modify, remove or delete any or all copyright notices (i) which are contained in the Software, including any copy thereof, and (ii) which are on the original CD-ROM and on the medium of a back-up copy made pursuant to Section 2 above.
11. **ACKNOWLEDGEMENT: BY USING THE SOFTWARE, YOU ACKNOWLEDGE THAT YOU HAVE READ THIS AGREEMENT, UNDERSTOOD IT, AND AGREE TO BE BOUND BY ITS TERMS AND CONDITIONS. YOU ALSO AGREE THAT THIS AGREEMENT IS THE COMPLETE AND EXCLUSIVE STATEMENT OF AGREEMENT BETWEEN YOU AND CANON CONCERNING THE SUBJECT MATTER HEREOF AND SUPERSEDES ALL PROPOSALS OR PRIOR AGREEMENTS, VERBAL OR WRITTEN, AND ANY OTHER COMMUNICATIONS BETWEEN THE PARTIES RELATING TO THE SUBJECT MATTER HEREOF. NO AMENDMENT TO THIS AGREEMENT SHALL BE EFFECTIVE UNLESS SIGNED BY A DULY AUTHORIZED OFFICER OF CANON.**

Table of contents

Read This First 3

It's so Simple! Make Prints Right at Home Like a Pro	4
Unbounded Possibilities with Entertaining Software	6
System Requirements	8
Programs and Compatible Operating Systems	9
Before You Connect the Camera to the Computer	10

Using the Software on the Windows Platform

– Preparations 11

Installing the Software and USB Driver	11
--	----

Using the Software on the Windows Platform

– The Basics 16

Downloading Images to the Computer	16
Printing Images	21

Using the Software on the Windows Platform

– Advanced Techniques 27

The ZoomBrowser EX Windows	27
ZoomBrowser EX Features	33
Replaying Movies	36
Editing Movies	37
Converting RAW Images	38
Operating the Shutter Remotely	41
Merging Panoramic Images - PhotoStitch	44
Enjoy Customizing Your Camera with the My Camera Settings ...	45

Using the Software on the Macintosh Platform

– Preparations 50

Installing the Software	50
-------------------------------	----

Using the Software on the Macintosh Platform

– The Basics 52

Downloading Images to the Computer	52
Printing Images	56

Using the Software on the Macintosh Platform	
– Advanced Techniques	60
The ImageBrowser Windows	60
ImageBrowser Features	66
Replaying Movies	69
Editing Movies	70
Converting RAW Images	71
Operating the Shutter Remotely	73
Merging Panoramic Images - PhotoStitch	76
Enjoy Customizing Your Camera with the My Camera Settings ...	77
Appendices	82
ArcSoft PhotoStudio	82
Uninstalling the Software	84
Memory Card Folder Structure	87
Method for Downloading to a Computer without Additional Software	88
Troubleshooting	89
Information about Your Camera	98
Non-Supported Programs and Features	98
Index	99

Using the PDF Manuals

The following PDF-format manuals (hereafter PDF manuals) are provided to explain the features and procedures for using ZoomBrowser EX and ImageBrowser.

- ZoomBrowser EX Software User Guide (Windows)
- ImageBrowser Software User Guide (Macintosh)



Adobe Reader or Adobe Acrobat Reader must be installed to read the aforementioned PDF manuals. If one of these applications is not already installed on your computer, download it from the following website.

<http://www.adobe.com/products/acrobat/readstep2.html>

Viewing PDF Manuals

Viewing Manuals Downloaded from a Website

These PDF-format manuals are available on the Canon website. Use your browser program to download these manuals from the following URL:

<http://web.canon.jp/Imaging/information-e.html>

Read This First

This chapter explains what you can accomplish using the camera with the software contained on the Canon Digital Camera Solution Disk.

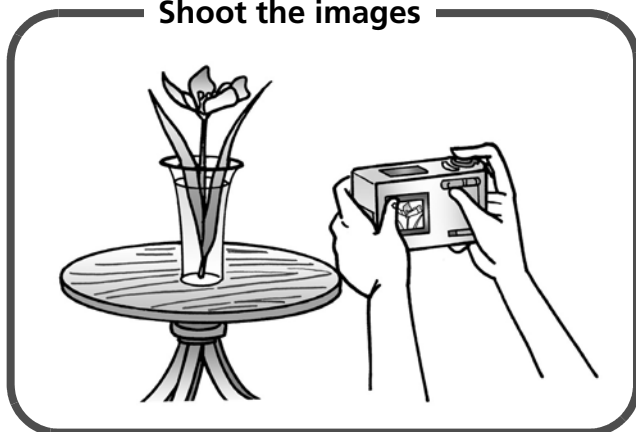
It also lists the computer system configurations required to use the software.

About this Guide

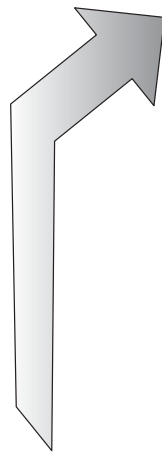
- The explanations in this guide are based on Windows XP and Mac OS X v10.3. If you are using another version of these operating systems, the actual screen contents and procedures may vary slightly from those shown.
- The following terms are used in this guide.
 - Mac OS X is used for Mac OS X (v10.2-v10.3)
 - Memory card is used for CF cards, SD cards, MultiMediaCards and PC cards.

It's so Simple! Make Prints Right at Home Like a Pro

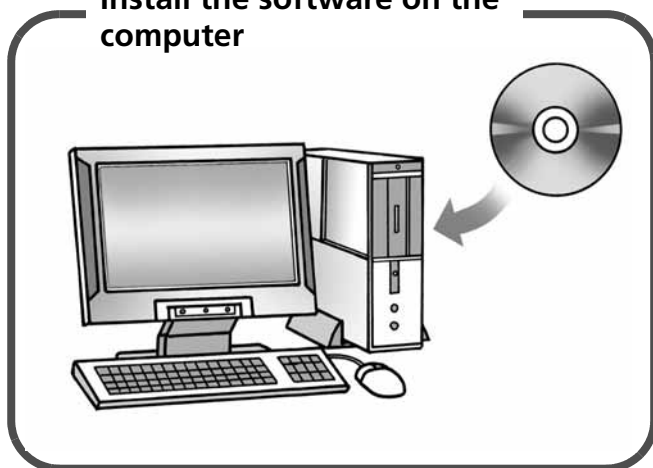
Shoot the images



See your *Camera User Guide* for shooting instructions.



Install the software on the computer



Just install the software once at the beginning.



Windows (p. 11)
Macintosh (p. 50)

Connect the camera to the computer



Precautions for
Connecting the
Camera to the
Computer (p. 10)

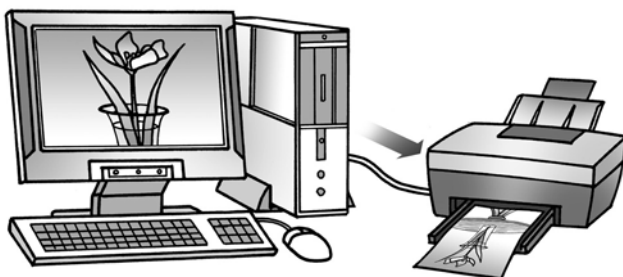


Download images to the computer



Windows (p. 16)
Macintosh (p. 52)

Print the images



Windows (p. 21)
Macintosh (p. 56)

Unbounded Possibilities with Entertaining Software

Print a Variety of Layouts

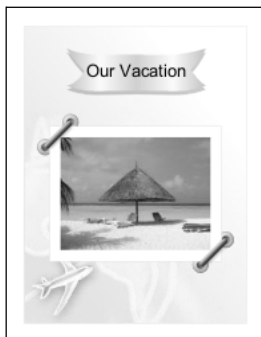
Print with the diverse layouts available in ZoomBrowser EX/PhotoRecord (Windows) and ImageBrowser (Macintosh). The examples shown are from ZoomBrowser EX and PhotoRecord (Windows).



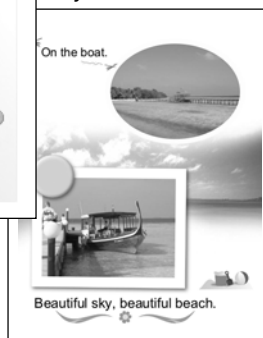
With One Photo per Page Print, printing images is also easy.



Confirm all your images in one glance with index (contact sheet) printing.

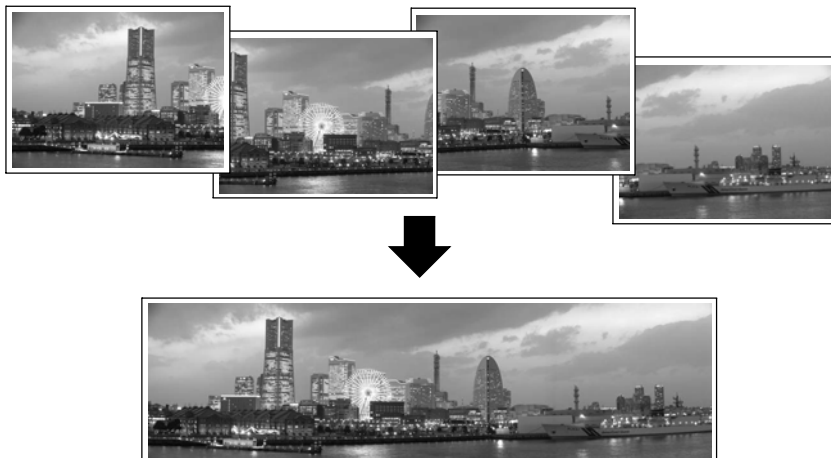


Make your pleasurable memories into photo albums/collections with Layout Print.



Stitch a Panorama Together

Create a panoramic image from a series of images with PhotoStitch.



Send an Image as an E-mail Attachment

Attach an image to an e-mail message by starting your mail software from within ZoomBrowser EX (Windows) or ImageBrowser (Macintosh).



Edit a Movie

You can edit movies, linking movies and stills that have been downloaded to the computer, adding text, such as titles, adding background music or applying various special effects.

Extract Stills from Movies

You can extract a still from the displayed movie and save it as a new image file. You can also specify a range of frames and extract multiple stills.

System Requirements

Please install the software on a computer meeting the following minimum requirements.

Windows

OS	Windows 98 Second Edition (SE) Windows Me Windows 2000 Service Pack 4 Windows XP (including Service Pack 1 and Service Pack 2)
Computer Model	The above OS should be pre-installed on computers with built-in USB ports.
CPU	Pentium 500 MHz or higher processor
RAM	Windows 98 SE/Windows Me: 128 MB or more Windows 2000/Windows XP: 256 MB or more
Interface	USB
Free Hard Disk Space	<ul style="list-style-type: none"> • Canon Utilities <ul style="list-style-type: none"> - ZoomBrowser EX: 250 MB or more (Including the PhotoRecord printing program) - PhotoStitch: 40 MB or more • Canon Camera TWAIN Driver: 25 MB or more • Canon Camera WIA Driver: 25 MB or more • ArcSoft PhotoStudio: 50 MB or more
Display	1,024 x 768 pixels/High Color (16 bit) or better

Macintosh

OS	Mac OS X (v10.2-v10.3)
Computer Model	The above OS should be pre-installed on computers with built-in USB ports.
CPU	PowerPC G3/G4/G5
RAM	256 MB or more
Interface	USB
Free Hard Disk Space	<ul style="list-style-type: none"> • Canon Utilities <ul style="list-style-type: none"> - ImageBrowser: 200 MB or more - PhotoStitch: 40 MB or more • ArcSoft PhotoStudio: 50 MB or more
Display	1,024 x 768 pixels/32,000 Colors or better



- A CD-ROM drive is required to install the software.
- Even when system requirements are met, not all computer functions can be guaranteed.
- A sound card is required to play movie file audio tracks under Windows.
- With Windows, QuickTime 6.5 is required to save images merged with PhotoStitch as the QuickTime VR type. It is also required to play and edit movies on the Windows 98 SE, Windows Me and Windows 2000 platforms. QuickTime is included on the Canon Digital Camera Solution Disk.
- Macintosh software cannot be used on disks formatted in the UFS (Unix File System) format.

Programs and Compatible Operating Systems

The CD-ROM labeled “Canon Digital Camera Solution Disk” is provided with all models. It contains the following programs.

Windows Programs

Compatible OS Program	Windows 98	Windows Me	Windows 2000	Windows XP	Major Functions
ZoomBrowser EX	● ^{*3}	●	●	●	Downloading, displaying, organizing and editing images
TWAIN Driver	● ^{*3}	—	●	— ^{*4}	Driver for Canon brand cameras (for Windows 98, Windows 2000)
WIA Driver	—	●	—	— ^{*4}	Driver (Windows Me)
PhotoRecord ^{*1}	● ^{*3}	●	●	●	Layout and printing
PhotoStitch ^{*1}	● ^{*3}	●	●	●	Merging images to make panoramas
ArcSoft PhotoStudio ^{*1} ^{*2}	●	●	●	●	Advanced image editing

^{*1} Can be started from within ZoomBrowser EX.

^{*2} Image editing program manufactured by ArcSoft, Inc.

^{*3} Compatible with Windows 98 SE only.

^{*4} Driver not required because Windows XP supports PTP.

Macintosh Programs

Compatible OS Program	Mac OS X	Major Functions
ImageBrowser	●	Downloading, displaying, organizing and editing images
PhotoStitch ^{*1}	●	Merging images to make panoramas
ArcSoft PhotoStudio ^{*1} ^{*2}	●	Advanced image editing

^{*1} Can be started from within ImageBrowser.

^{*2} Image editing program manufactured by ArcSoft, Inc.



See *ArcSoft PhotoStudio* (p. 82) for information about this program.

Before You Connect the Camera to the Computer



Ensure that you have installed the software from the supplied Canon Digital Camera Solution Disk before you connect the camera to the computer.

Precautions for Connecting the Camera to the Computer

- Use the interface cable to attach the camera directly to a USB port on the computer, not through a USB hub. The connection may not operate correctly through a USB hub.
- The connection may not operate correctly if you are using other USB devices, excluding USB mice or keyboards, at the same time as the camera. If this occurs, disconnect the other devices from the computer and try reconnecting the camera.
- Do not connect two or more cameras at the same time to the same computer via the USB interface. The connections may not operate correctly.
- Never allow the computer to go into standby (sleep) mode while a camera is connected via the USB interface. If it does happen, never disconnect the interface cable. Try to awaken the computer with the camera in the connected state. Some computers will not awaken properly if you disconnect the camera while they are in standby (sleep) mode. Please refer to your computer manual for instructions regarding the standby (sleep) mode.



- You are recommended to power the camera from a household power source (AC adapter) when connecting to a computer (if available for your camera model). Ensure that you use fully charged batteries if you will not be using a household power source.
- See the *Camera User Guide* for procedures connecting the camera to the computer.

Using the Software on the Windows Platform – Preparations

This chapter explains the basic procedures for installing the software and connecting the camera to a computer. Read this material before you connect the camera to the computer.

Installing the Software and USB Driver

Start by installing the software from the Canon Digital Camera Solution Disk.



- You must install the software before you connect the camera to the computer.
- Users of Windows XP and Windows 2000 must first log in as an Administrator (computer system administrator) to install programs.



See *ArcSoft PhotoStudio* (p. 82) for details on how to install ArcSoft PhotoStudio.

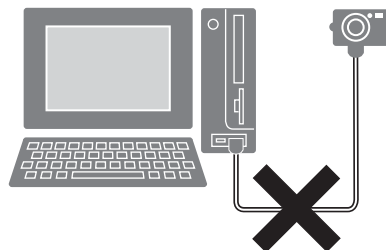
Items to Prepare

- Your camera and computer
- Canon Digital Camera Solution Disk
- Interface cable supplied with the camera

Installation Procedures

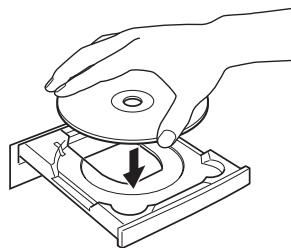
- 1** Confirm that the camera is NOT connected to the computer.

If it is, disconnect the cable. The software cannot be properly installed if the camera is connected to the computer at the start.



- 2** Close any programs that are running.


- 3** Place the Canon Digital Camera Solution Disk in the computer's CD-ROM drive.
If the installer panel does not appear automatically, use the following procedures.




How to Display the Installer Panel

Use the following procedures to display the installer panel if it does not appear automatically.

Windows XP

1. Select [My Computer] from the [Start] menu.
2. Right-click the CD-ROM icon and select [Open].
3. Double-click the [SETUP.EXE]  icon.

Windows 2000, Windows Me, Windows 98 SE

1. Double-click the [My Computer] icon on the desktop.
2. Right-click the CD-ROM icon and select [Open].
3. Double-click the [SETUP.EXE]  icon.

Some computers may not display the [.EXE] file name extension as shown above.

- 4** Click the Digital Camera Software [Install] button.

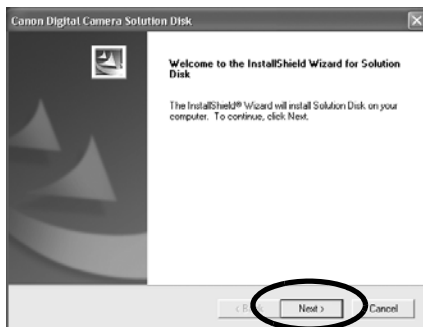


Installer Panel



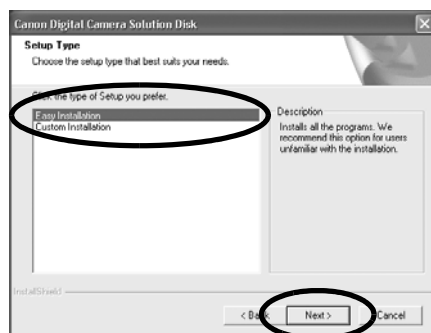
Follow any instructions to restart your computer, if they appear. If the following window appears, continue with the installation.

5 Click [Next].



6 Select [Easy Installation] as the setup type and click [Next].

Select [Custom Installation] to select programs individually for installation.



When [Custom Installation] is Selected

The USB driver (the software for connecting) is required when the camera is connected to the computer with an interface cable. Ensure that you select a USB driver from below (the appropriate one for your operating system).

- Windows 2000/Windows 98 SE: Canon Camera TWAIN Driver
- Windows Me: Canon Camera WIA Driver

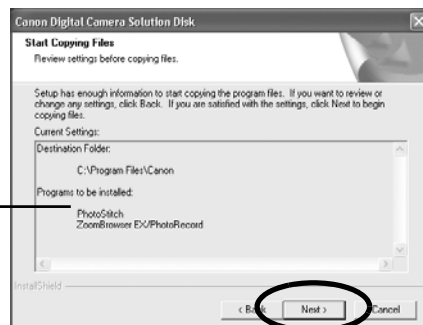
With Windows XP, the USB driver supplied with the Windows operating system is used so there is no need to install a USB driver.

7 Click [Yes] if you agree to all of the terms of the software license agreement.

8 Review the installation settings and click [Next].

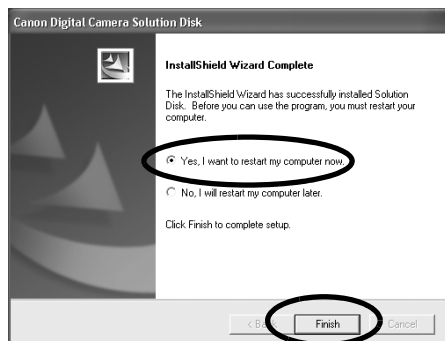
Follow the onscreen instructions to proceed.

The items displayed here differ according to the software installed.



- 9** When the installation is over, select [Yes, I want to restart my computer now.] and click [Finish].

At this stage, do NOT remove the Solution Disk from the CD-ROM drive yet.

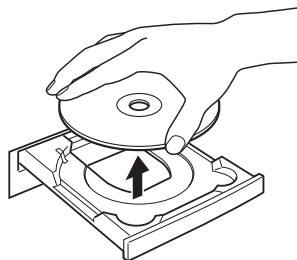


Users of Windows XP and Windows 2000 must log in as an Administrator (computer system administrator) after restarting to carry out the subsequent procedures.

- 10** Remove the disk from the CD-ROM drive when your normal desktop screen appears after restarting.

This concludes the software installation.

Continue by connecting the camera to the computer so that the USB driver can be utilized.

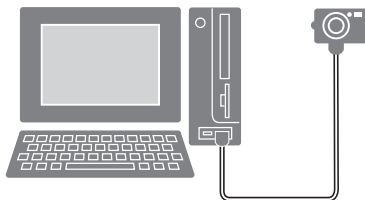


If you installed a USB driver, so far the required files have only been copied to your computer. You must now connect the camera to the computer with the interface cable to complete the installation and prepare the driver for use.



See *Uninstalling the Software* (p. 84) to delete the installed programs.

- 11** Attach the camera to the computer with the interface cable and set the camera to the correct mode for connecting.



Procedures for attaching the camera to the computer and placing the camera in the correct mode for connecting vary between camera models. See the *Camera User Guide*.

If the Digital Signature Not Found window appears, click [Yes].



The USB driver will automatically finish installing onto the computer when you attach the camera and open a connection.

Dialogs similar to the following will appear during this process (first time the camera is connected to a computer only).

Windows XP

The dialog on the right will appear after a few moments.



Windows 2000/Windows Me/Windows 98 SE

Restart the computer according to the instructions if you are prompted to do so by a message.

A dialog allowing you to set the default settings will display after installation. See *Using the Software on the Windows Platform — The Basics* (p. 16) for the subsequent procedures.



- See *USB driver installation not proceeding well in the Troubleshooting* section (p. 89) if you are having problems installing the USB driver.
- See *Uninstalling the USB Driver* (p. 85) to delete the USB driver installed with these procedures.
- See *If You Were Using ZoomBrowser EX Version 2 or 3* (p. 96) if you were previously using either version.

This concludes the software and USB driver installation and the procedures for connecting the camera to the computer.

You may now download camera images to the computer (p. 16).

Using the Software on the Windows Platform – The Basics

This chapter explains the procedures for using ZoomBrowser EX to download the camera's images to the computer and print them.

Read this chapter after completing the preparations in the *Using the Software on the Windows Platform – Preparations* section.

Downloading Images to the Computer

Begin by downloading the images to your computer. The downloading procedure is slightly different according to whether you are using a camera to computer connection (see below) or a memory card reader (p. 19).

Camera to Computer Connection

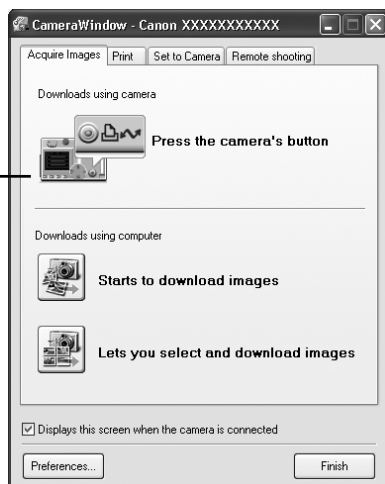
- 1 Attach the supplied interface cable to the computer's USB port and the camera's DIGITAL Terminal. Prepare the camera for communication with the computer.



Procedures for attaching the camera to the computer and placing it in the correct mode for connecting vary between camera models. See the *Camera User Guide*.

The Camera Control Window will appear.

Camera Control Window



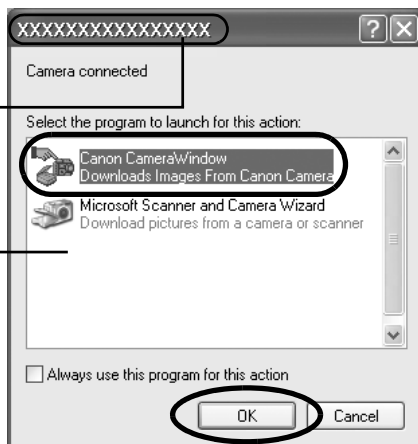
First Time Camera is Connected to a Computer

Set the following settings the first time you connect the camera to the computer. These procedures are not required from the second connection onward.

Select [Canon CameraWindow] when a dialog (Events dialog) similar to that on the right displays and click [OK].

Your camera model name or [Canon Camera] will appear here.

Different programs may display according to your computer setup.



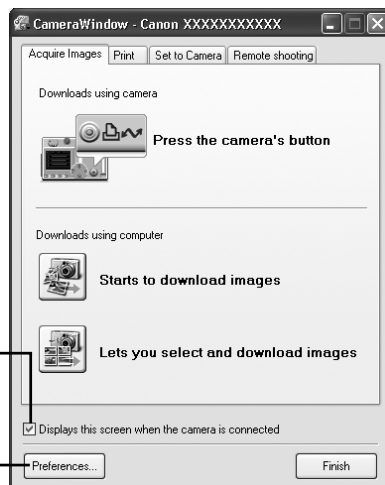
If this Events dialog does not appear, click the [Start] menu and select [All Programs] or [Programs], followed by [Canon Utilities], [CameraWindow] and [CameraWindow].

2 Download the images.

Download the images using the camera or the computer. By default, the downloaded images are saved into the [My Pictures] folder.


Placing a check mark here causes this window to automatically open when the camera and computer are connected.


You can adjust the settings, such as the type of image downloaded and the destination folder, by clicking [Preferences].

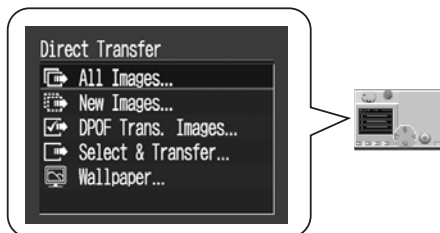


Using the Camera to Download Images (Direct Transfer Function)



- If the conditions are right for the Direct Transfer function, the Direct Transfer settings menu will appear in the LCD monitor. In addition, the  (Print/Share) button will light if your camera is equipped with one.
- See the *Camera User Guide* for instructions regarding Direct Transfer settings and procedures.

Set the Direct Transfer settings on the camera and press the  (Print/Share) button or the [SET] button.



Using the Computer to Download Images

Click [Starts to download images].



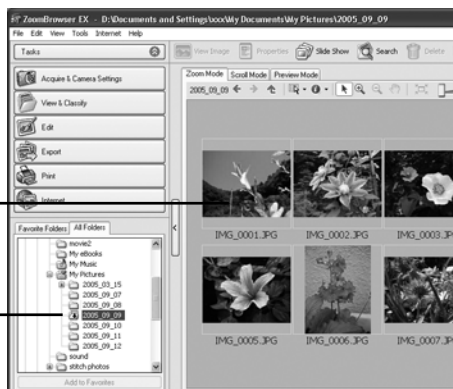
- By default, all the images that have yet to be downloaded will download.
- To download images that have had their transfer settings set with the camera, click [Preferences] and select [Images whose transfer settings were specified with the camera] as the image type to be downloaded.
- Click [Lets you select and download images] to show the camera images in a list, check the images before downloading and download only selected images.

The downloaded images will be saved into folders according to their shooting date.

By default, when downloading is complete, the thumbnails (tiny versions) of the downloaded images display in ZoomBrowser EX's Main Window.

Thumbnail

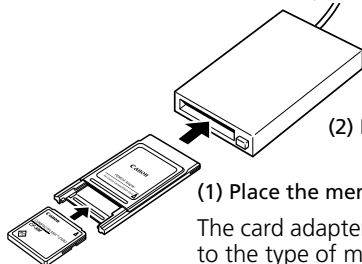
The downloaded symbol displays on downloaded folders (the symbol will disappear when you exit ZoomBrowser EX).



Next, print out the images (p. 21).

Memory Card Reader Connection

- 1 Insert the memory card into the reader.
Use a separately sold card adapter if required.
See the manual for the memory card reader for its connection and handling instructions.



(2) Insert the loaded adapter into the slot.

(1) Place the memory card in an adapter if required.

The card adapter and memory card shape may vary according to the type of memory card your camera utilizes.

- 2 Select [View/Download Images using Canon CameraWindow] when the dialog to the right appears and click [OK].

The Camera Control Window will display.



If the dialog above fails to appear, click the [Start] menu and select [All Programs] or [Programs], followed by [Canon Utilities], [CameraWindow] and [CameraWindow], and proceed to Step 3.

3 Click [Starts to download images].



You can adjust the settings, such as the type of image downloaded and the destination folder, by clicking [Preferences].



- By default, all the images that have yet to be downloaded will download to the [My Pictures] folder.
- To download images that have had their transfer settings set with the camera, click [Preferences] and select [Images whose transfer settings were specified with the camera] as the image type to be downloaded.
- Click [Lets you select and download images] to show the memory card images in a list, check the images before downloading and download only selected images.
- See *Memory Card Folder Structure* (p. 87) for information about memory card folder structures and file names.

The downloaded images are saved into folders according to the shooting date.

By default, when the download is complete, the thumbnails (tiny versions) of the downloaded images display in ZoomBrowser EX's main window.

Next, print out the images (p. 21).

Printing Images

There are three ways in which images may be printed: One Photo per Page Print, Index Print and Layout Print. This section explains the One Photo per Page Print and Layout Print sections.

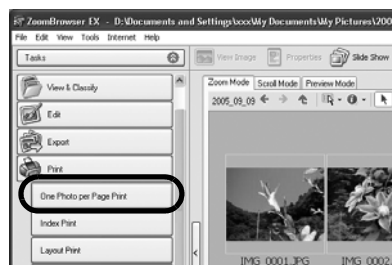


- Movies cannot be printed, but you can print stills after they have been extracted from movies and saved to files.
- To use the Index Print option, click [Print] in the Main Window, followed by [Index Print].

One Photo per Page Print

This option prints one image per page in a standard "photo" format. If you select multiple images, it will print them on the corresponding number of pages.

- 1 Click [Print] in ZoomBrowser EX's Main Window, followed by [One Photo Per Page Print].

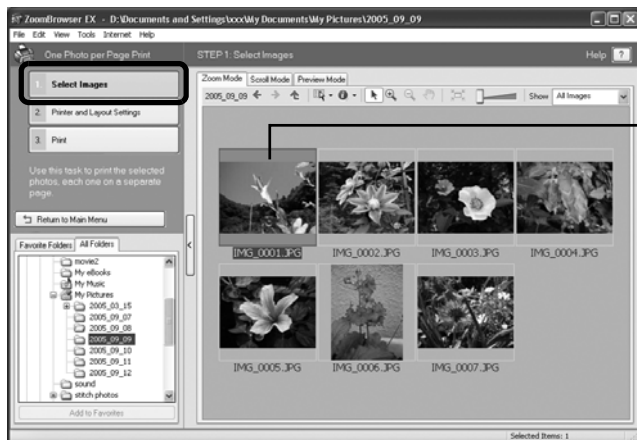


- If you have installed the Easy-PhotoPrint program that accompanied a Canon-brand printer, you will proceed to the Easy-PhotoPrint printing window shown at the right when you select [One Photo Per Page Print] according to the default settings. If a window similar to it opens, read the Help menu for Easy-PhotoPrint for instructions to proceed.
- To proceed to the ZoomBrowser EX printing window as shown in Step 2 when you select [One Photo Per Page Print], click the [Tools] menu and select [Preferences], followed by the [Print] tab. Select [Use ZoomBrowser EX Print Functions].



2 After confirming that [1. Select Images] is selected, select images.

You can select multiple images by holding the [Ctrl] down while clicking on successive images.



The background of selected images changes to blue.

3 Click [2. Printer and Layout Settings] and adjust the categories as you feel necessary.

Selects the printer and the paper size etc.

Sets printing to "borderless," etc.

Place a check mark here to print shooting date/time information with images.

Sets the number of print copies

This button switches between images if multiple images were selected.

4 Click [3. Print].
Printing will start.

Layout Print

This option uses the PhotoRecord printing utility to arrange multiple images on a single page and print them like an album.

This section explains the basic flow of steps to use PhotoRecord. Please see the PhotoRecord Help menu for detailed instructions.

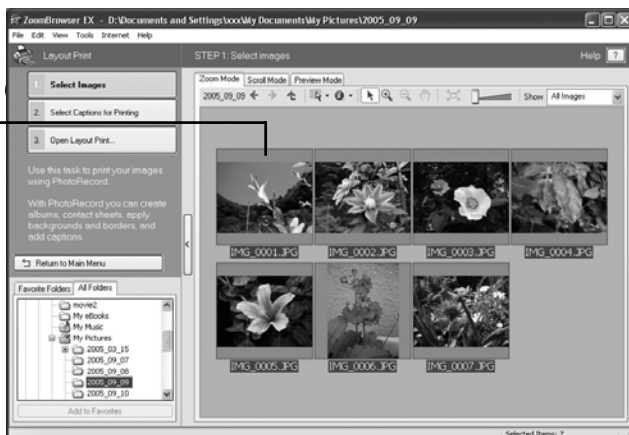
- 1 Click [Print] in ZoomBrowser EX's Main Window, followed by [Layout Print].



- 2 Confirm that [1. Select Images] is selected and proceed to select images.

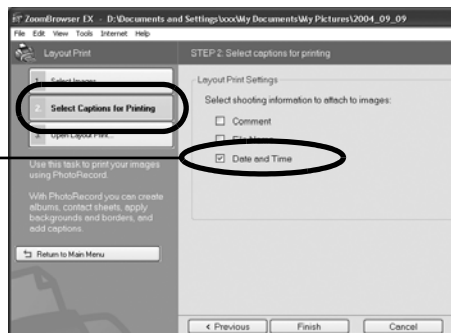
You can select multiple images by holding the [Ctrl] key down while clicking on successive images.

The background of the selected image(s) will turn blue.



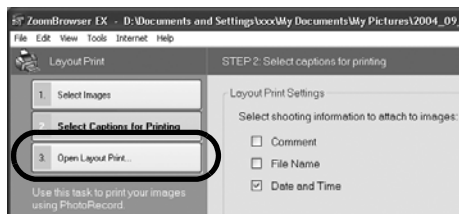
- 3** Click [2. Select Captions for Printing] and place a check mark beside the type of information that will be printed with the images.

If you select [Date and Time], for example, you can print the images with their shooting dates and times included.



You can add a comment to an image in the Properties Window (p. 32).

- 4** Click [3. Open Layout Print].



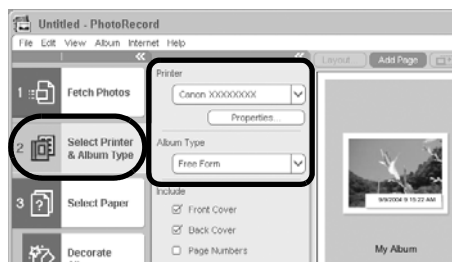
PhotoRecord will start, displaying the selected image and the information selected in Step 3 in the Album window. In addition, the steps that will take you through the printing process will display on the left side. Follow the steps in order to proceed.



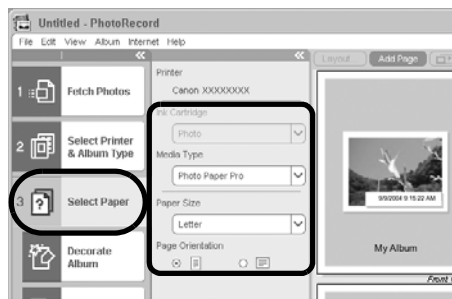
Album Window
The selected images display here.

The printing procedures display here.

- 5** Click [2 Select Printer & Album Type]. Once you have chosen a printer, select [Free Form] in the Album type category.



- 6** Click [3 Select Paper] and select the paper size and orientation.



- 7** Click [Decorate Album] and change the design of the image background and border as desired.

Click the [Themes], [Backgrounds], [Photo Frames], [Text Frames] or [Clipart] button to switch between selections.




Perform the procedures according to the instructions beside the [?] symbol.



- The [Themes] category provides consistent designs for use throughout an entire album.
- You can also click [Add Titles & Captions] to add text as a title or caption.

8 Click [4 Print], confirm the number of copies and other printing settings, and click [Print].



This will start printing.
To close PhotoRecord after printing is complete, click . Click [Yes] to save the album or [No] to close it without saving. The ZoomBrowser EX window will reappear when the save procedure is complete.



There are numerous varieties of albums. Select one to suit your purposes. Please note that the available album types may vary slightly according to the printer in use.

Album Type	Description
One Photo Per Page	Prints one image on each sheet of paper.
One Photo Per Sheet	
Free Form	Allows images to be freely positioned on the page and printed.
Index	Prints thumbnails of the images and their shooting information Exif data*).
Fixed Size Photo	Allows image heights and widths to be specified and prints.
Mosaic	Lines up the specified number of images and prints.
Perforated Paper	Prints on perforated paper.
8-Sticker Label	Prints on 8-label sheets.

* The shooting information displayed in ZoomBrowser EX and the Exif data that can be printed using PhotoRecord differ slightly.

This chapter explained the ZoomBrowser EX basics. Once you have mastered them, try the advanced techniques.
Using the Software on the Windows Platform – Advanced Techniques (p. 27).



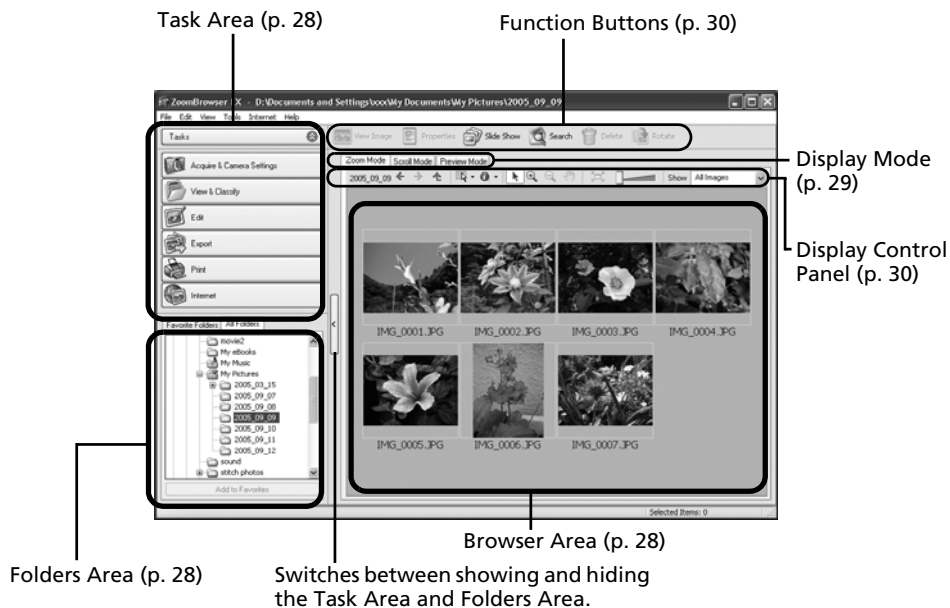
• A PDF-format manual for ZoomBrowser EX is also available. It provides further information about the program's features and procedures. See *Using the PDF Manuals* (p. 2).



To confirm whether your camera supports these functions, please refer to *Information about Your Camera* (p. 98).

This section describes the principal ZoomBrowser EX windows: the Main Window, Viewer Window and Properties Window.

This window is for displaying and organizing images downloaded to the computer.



Task Area

- ZoomBrowser EX's tasks are arranged here like an index.
- Click a Task button to carry out the desired task.

These features are described in *ZoomBrowser EX Features* (p. 33)



Folders Area

- Use this area to select folders. The images in the selected folder display in the Browser Area. If you select a network drive in advance with Windows Explorer, you can display network folders, but you cannot add, change or delete those folders in the Browser Area.
- If you selected Favorite Folders, only the folders registered in advance as Favorite Folders will display. You are recommended to register a folder that you use frequently as one of the Favorite Folders. If you selected All Folders, all the folders will display.

Methods for Registering a Favorite Folder

- If [Favorite Folders] is displayed: click [Add] and select a folder.
- If [All Folders] is displayed: select a folder and click [Add to Favorites].
- To delete a folder in the Favorite Folders area, select a folder and click the [Delete] button.

Browser Area

- The images in the folder selected in the Folders Area will display here. The display style will vary according to your Display Mode selection.

Methods for Selecting Images in the Browser Area

- Selecting a single image: click on an image.
- Selecting multiple images: click on the first image and then hold the [Ctrl] key down while clicking on additional images.
- Selecting consecutive images: click on the first image and then hold the [Shift] key down while clicking on the last image.

- You can sort the image order in the Browser Area by file name, shooting date or other characteristics by clicking the [Tools] menu and selecting [View] and [Sort by].
- The following icons will display around images according to their attributes.



Images shot with the camera's Stitch Assist mode



RAW images



Movies



Images with sound memo attachments



Protected images



Images shot with the camera's AEB function



Images shot with the camera on end that are rotated in the display only

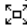
Display Mode

- Selects the display style for the Browser Area.

Zoom Mode

Displays all the images in a folder as thumbnail images. This mode is convenient for searching for images since many can be displayed at once.

If additional folders are nested within a folder, their images are displayed as thumbnails as well.

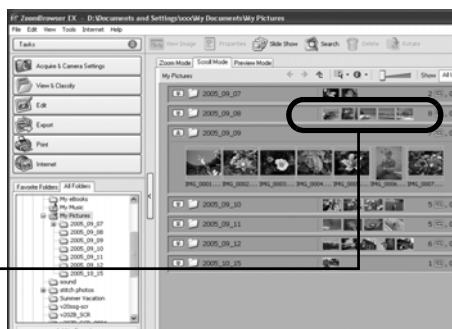
If you move the mouse cursor over a folder,  will display on the upper right. Clicking here displays that folder zoomed in.



Scroll Mode

This mode is convenient for checking the images in multiple folders at once. If the displayed folder is at the highest level, then all thumbnails in the lower-level folders also display. You can change the folder level (folder depth) by clicking the [Tools] menu and selecting [Preferences].

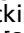
The images within nested folders also display.



Preview Mode

This mode displays the image at a larger size as well as the image information.



Positioning the mouse pointer over a thumbnail causes the image to appear at a higher magnification in a Mouse Over Window. You can turn off this function by clicking the  [Show Information], and removing the check mark from the [Show Mouse Over Windows] option.

Display Control Panel

- This panel adjusts the display settings for the Browser Area.

Selection Menu

Use this to select or deselect all the images in the Browser Area.

Fit to Window

Changes the thumbnail size to fit them into the window.

Display Size

Changes the size of the thumbnail in the Browser Area.



Show/Hide Image Information Menu

Use this to display or hide image information beneath the thumbnails, such as the file name, shooting date or Star Rating.

Select Button

Use this to select images in Zoom mode.

Filter Images

This feature filters your images by their Star Ratings, displaying only those images in the Browser Area. One of three Star Ratings can be assigned to an image in the Viewer Window, the Properties Window, or in the information column in the Preview Mode.

Function Buttons

- These buttons are available for executing various functions.

View Image Button

Displays the selected image or movie in the Viewer Window.

Slide Show Button

Starts a slide show of the selected images.

Rotate Button

Rotates the selected image.



Properties Button

Displays information about the selected image in the Properties Window.

Search Button

Searches for images using such criteria as the Star Rating, modification date, shooting date, comments or keywords.

Delete Button

Deletes selected images or folders.

Viewer Window

Double-click an image in the Browser Area to display it in the Viewer Window.

Edit Menu

You can edit, eliminating red eyes, adjusting colors, cropping and inputting titles. You can also use it to start up other programs for editing.

Print Button

Prints the displayed image.

Display AF Frame

Displays the AF Frame (area used to focus).

Shooting Information Display Button

Displays image shooting information.

Synchronize Button

Synchronizes the display settings when multiple images are displayed.

Image Selector Button

Switches between images.

Displays images in the Viewer Window at their actual size.

Sets the image display size to the size in the Viewer Window.

Zoom

Changes the image zoom setting.

Star Rating

Sets the Star Rating for an image.


Full Screen Button

Displays the image in the full screen mode. Click the image or press any key on the keyboard to restore the normal display mode.

Split Screen Button

Displays multiple images at once. This is handy for comparing images.



- If a RAW image is displayed, the [Display Original Image] button displays beneath it. Clicking this button displays the converted image in the Viewer Window.
- If you are using Windows XP and display a movie file, the  (Capture Still Frame) button will display beside the Star Ratings. Clicking this button extracts still images from movies.

Properties Window

The Properties Window displays when you select an image in the Browser Area and click the Properties button. The Properties Window does not display in the Preview Mode.

Shows or hides categories.

Star Rating

Sets the Star Rating for an image.

Plays a sound memo attached to an image.

Protect

Prevents an image from being overwritten or deleted.

Comment

You can type a comment here.

Keywords

Sets the keywords used in searches.

Brightness Histogram

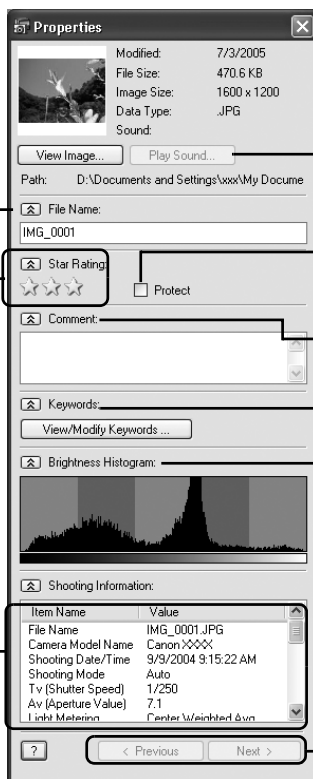
A graph of the highlights and shadows distribution in an image.

Shooting Information

Displays detailed information about the shooting settings when the image was captured, such as the shutter speed or exposure setting. The camera model will determine what information is displayed.

Image Selector Buttons

Switches between images.



ZoomBrowser EX Features

This section briefly introduces the Task Area functions.



To confirm whether your camera supports these functions, please refer to *Information about Your Camera* (p. 98).

Acquire & Camera Settings

Opens the Camera Control Window, which lets you perform the following operations.



Acquire & Camera Settings

Acquire Images

Downloads images from the camera/memory card (p. 16, 19).

Additionally, you can download sound files recorded with the Sound Recorder function on the camera. Refer to the ZoomBrowser EX PDF manual or Help for download instructions.

Print Images

Selects and prints the images in a camera or memory card. You can print numerous ways, using DPOF settings, the Index Print option, One Photo per Page Print option, or by selecting images before printing.

Set to Camera

Sets camera settings, such as the My Camera settings (p. 45). It also uploads images from the computer to the camera/memory card.

Remote Shooting

Allows you to operate the camera shutter from the computer (p. 41).

View & Classify

View as a Slide Show

Starts a slide show of the images selected in the Browser Area.



View & Classify

Rename Multiple Files

Changes the file names of the selected images in a single pass.

Classify into Folder

Classifies images and saves them into a specified folder.

Search

Performs image searches using criteria such as the Star Rating, modification date, shooting date, comments or keywords. Star Ratings, comments and keywords can be set in the image information column in the Preview Mode or in the Properties Window.

Edit

Edit Image

Allows you to perform image editing, such as cropping, image correction and red-eye correction. You can also use it to start other image editing programs.



Stitch Photos

Merges multiple images and creates a single large panoramic image (p. 44).

Edit Movie

Edits movies or still images strung together. You can add text as titles, or background music, and apply various effects (p. 37).

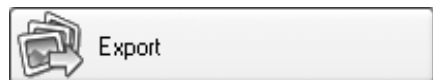
Process RAW Images

Converts RAW images into standard images. You can adjust the image brightness, contrast and color balance among other attributes during conversion (p. 38).

Export

Export Still Images

Allows you to change the image size or type, and export it as a new image.



Export Movies

Allows you to change the movie size or type, and export it as a new movie.

Extract frames from a movie

Extracts still images from movies over a specified interval and saves them as image files (Windows XP only).

Export Shooting Properties

Allows you to select the necessary data from the shooting information and export it as a text file.

Export as a Screen Saver

Exports the image as a screen saver file.

Export as a Wallpaper

Exports the image as a wallpaper file.

Backup to CD

Copies images to a CD-R/RW disk for backup.



The Backup to CD function can only be used on computers satisfying the following requirements.

- Windows XP is preinstalled
- A CD-R/RW drive is included as standard equipment

Print

One Photo per Page Print

Prints one image per page (p. 21).
You can print "photo" prints easily.



Print

Index Print

Lines up small versions of the images in rows and prints.

Layout Print

Allows you to arrange multiple images on one page and print them like an album. You can also insert captions and titles (p. 23).

Print Using Other Software

Select the software to use and then print.

Internet

Email Images

Converts the selected images to the appropriate size for transmission by e-mail. You can also use it to automatically start an e-mail program after conversion.



Internet



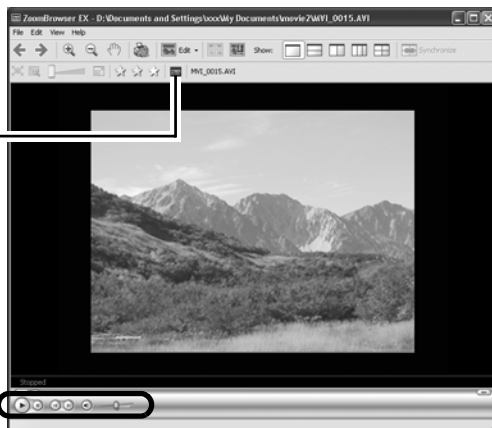
- To return to the previous screen after selecting a task, click [Return to Main Menu] at the bottom of the task screen.
- Various Help functions are available in ZoomBrowser EX. Click the [Help] menu, [?] button or [Help] button to display topics about operational procedures or the functions available.

Replaying Movies

- 1 Double-click an image with a movie icon in ZoomBrowser EX's Browser Area. The Viewer Window will open and play the movie.

You can save the displayed scene as a still image by clicking here.

You can control the movie's playback and sound volume.



Windows 2000, Windows Me and Windows 98 SE

QuickTime is required to play and edit movies. To install QuickTime, please follow these procedures.

1. Place the Canon Digital Camera Solution Disk in the CD-ROM drive.
If the installer panel fails to appear automatically, display it using the procedures in the *How to Display the Installer Panel* section (p. 12).
2. Click the QuickTime [Install] button.



Follow the onscreen instructions to proceed with the installation.

Editing Movies

You can create and edit movies: link movies and stills that have been downloaded to your computer, add background music, superimpose titles and other text, and apply various effects to the movies.



- The QuickTime program is required to replay or edit movies on the Windows 2000, Windows Me or Windows 98 SE platform. Install it during procedures in the "Replaying Movies" topic in the *Windows 2000, Windows Me and Windows 98 SE* section (p. 36).
- Movies are saved as Motion JPEG AVI movies.

- 1 Click [Edit] in ZoomBrowser EX's Main Window, followed by [Edit Movie].
- 2 Click [1. Add Images] and select the image (movie or still) you wish to edit. You can select multiple movies or stills.
- 3 Follow the steps at the left of the window to edit the movie and save it.

Follow these steps to proceed.

Click this button for detailed operational instructions.

Instructions



Click this button to play the movie being edited.

Storyboard Area

Displays thumbnails of the selected images.
Links images in order from left to right.

Transition Effects Box

Appears between adjacent images and displays the symbols of the transition effects linking images.

Converting RAW Images

RAW images are extremely high-quality images that are not subject to any deterioration due to compression processing. Since they are a special type of image, they cannot be opened by many image editing programs. It is first necessary to convert them into standard image files.



- See *Information about Your Camera* (p. 98) to determine whether your camera model supports this function.
- See the *Camera User Guide* for information about the camera settings for shooting RAW images.

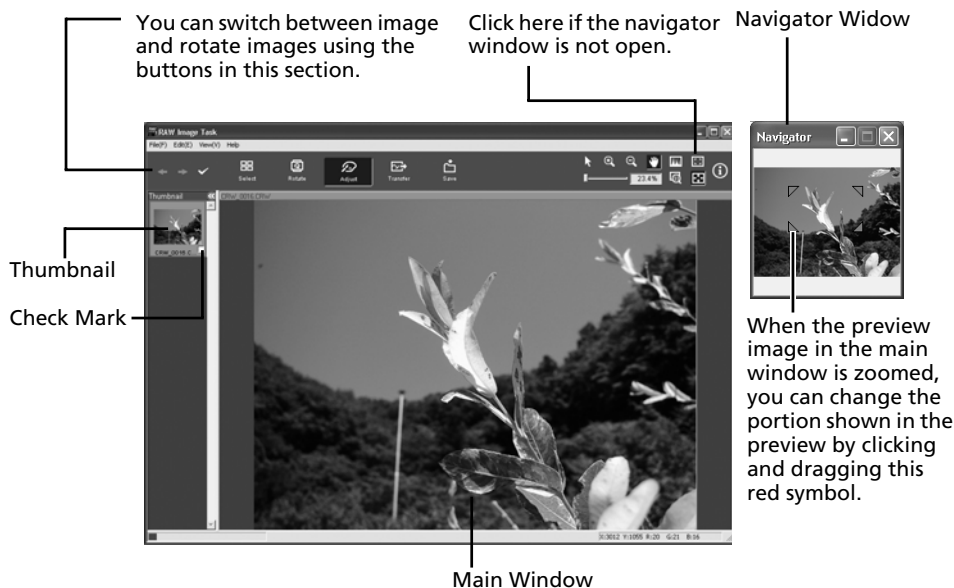
Procedures for Converting RAW Images

1 Select a RAW image in ZoomBrowser EX's Browser Area.


2 Click [Edit], followed by [Process RAW Images].

Click [OK] when a window displaying procedures for converting and adjusting RAW images appears.

The Main Window, the Navigator window and the Image Quality Adjustment Window will display.



3 Adjust the image quality as required in the Image Quality Adjustment Window. This window is explained in the *Functions of the Image Quality Adjustment Window* section (p. 39).

- 4** Click the  (Save), set the file type and destination, and then click [Save].

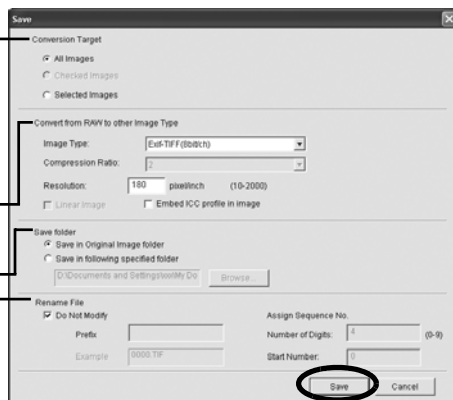
Selects the images for saving with these settings.

Select the method of changing the image type.

Set the file destination

You can also change the file name

This will convert the image.



- 5** Click the  button in the Main window.

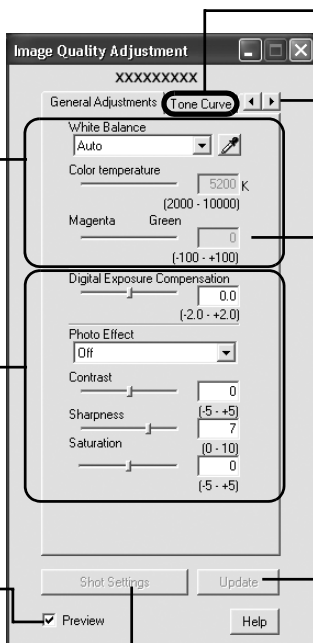
Functions of the Image Quality Adjustment Window

The following adjustments can be made in the Image Quality Adjustment Window. The available settings may vary depending on the camera used.

This section adjusts the white balance according to the light source and color temperature.

This section adjusts the digital exposure compensation, photo effect, contrast, sharpness, and saturation.

The effect of the settings above can be viewed immediately if you place a check mark here.



Tone Curve Tab
You can set the levels for the RGB channels separately or together.

Advanced Adjustments Tab
You can select such settings as the output color space.

If you cannot set the desired setting with the slider on the left, directly enter the setting here.

Applies the settings to the displayed image

Restores all settings to the settings stored in the camera at the time of shooting.



You can change the coloration of the image to your preferred settings when you convert a RAW image. You can also select preset color schemes, such as Positive Film. Furthermore, you can add your own color schemes (My Color) to apply to other RAW images when they are being converted. See the PDF manual for ZoomBrowser EX for more information (p. 2).

Operating the Shutter Remotely

You can record still images by using a computer to control the shutter of a connected camera. This is particularly useful for checking images on the larger display of the computer as you record them and for high volume photography without worrying about filling the camera's memory card.

Preparing for Remote Shooting

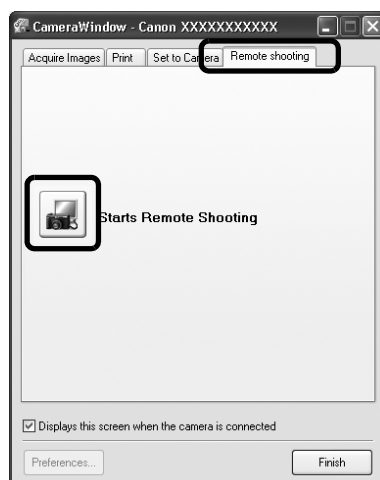
- 1 Attach the supplied interface cable to the computer's USB port and the camera's DIGITAL terminal and place the camera in the correct mode for connecting.



- Methods for connecting the camera to the computer and placing it in the correct mode for connecting vary between camera models. Please refer to the *Camera User Guide*.
- Perform the settings described in *First Time Camera is Connected to a Computer* (p. 17) the first time you connect the camera to the computer.

The Camera Control Window will display.

- 2 Open the lens cover or remove the lens cap on models equipped with them. Proceed to the next step if your model does not have one.
- 3 Click the [Remote shooting] tab.
- 4 Click [Starts Remote Shooting].



- 5 Select a destination for the captured images and click [OK].

RemoteCapture Task Window

The RemoteCapture Task window has the following features.

Shows/Hides the viewfinder or detailed settings area.

Size and Resolution Selector

Selects the size and resolution at which images are captured.

Rotation Settings

Sets the rotation parameters for images after they are captured.

Release Button

Releases the shutter.

Slide this to zoom the camera in or out.

Start/Stop Viewfinder Button

Starts or stops the viewfinder display.

Refresh Button

Resets the exposure, focus and white balance.


You can add comments to images by placing a check mark here and typing text in the boxes below.

Viewfinder Display
Click the [Start/Stop Viewfinder] button while a connection to the camera is open to display the image appearing in the camera's viewfinder.



Set the basic camera settings here.




- The settings available in the RemoteCapture Task window vary between camera models.
- RemoteCapture Task locks the exposure and focus settings for the subject matter in the Viewfinder section. If the lighting or distance to the subject changes, click  to reset these settings.

Remote Shooting



Ensure that you turn off your computer's standby mode before you begin remote shooting. The device performance cannot be guaranteed if the computer enters the standby mode.

- 1** Click  and check the subject in the viewfinder.
- 2** Change the image size or resolution, the rotation settings and the settings at the bottom of the window as required.

If you intend to hold the camera vertically to photograph a subject, you can save the image to the computer with the correct orientation if you set the rotation settings in advance.



If your camera is equipped with the Auto Rotate function and you set it to On, the image will automatically be rotated and appear in the correct viewing orientation in the RemoteCapture Task window.

- 3** Click the [Release] button.



- You can release the shutter by pressing the camera's shutter button or the keyboard's space key.
- Other than the shutter button, the camera's buttons and switches, including the zoom, cannot be operated while the camera is being controlled with the Remote Shooting function.
- You may notice that the interval between the shutter release and activation is slightly longer for remote shooting than when the camera is used independently.

Merging Panoramic Images - PhotoStitch

You can create a wide panoramic image by merging several images. It is easier to merge images if they are shot with the camera's Stitch Assist mode because PhotoStitch can automatically detect the image order and orientation.

Images Shot in Stitch Assist Mode

A sequence of images shot in Stitch Assist mode is saved into a single folder when it is downloaded from the camera. In addition, the symbol below displays by the image in the Browser Area.

Symbol displayed by images shot in Stitch Assist mode.

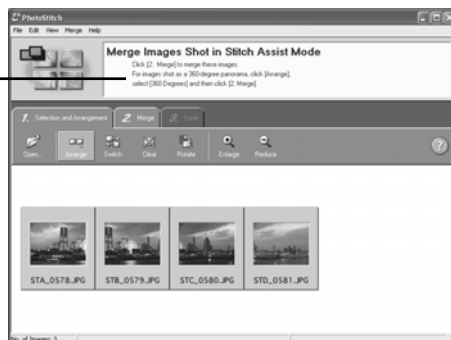


- See the *Camera User Guide* for information about shooting in Stitch Assist mode.
- Images shot in Stitch Assist mode with a wide converter, teleconverter or close-up lens cannot be merged accurately.

Starting PhotoStitch

- 1 Click [Edit] in the ZoomBrowser EX's Main Window and click [Stitch Photos].
- 2 Click [1. Select Images] and select several images in the Browser Area.
- 3 Click [2. Open PhotoStitch].

Instructions



- 4 Merge the images following the instructions in the guidance panel at the top of the PhotoStitch window.

Enjoy Customizing Your Camera with the My Camera Settings

The start-up image, start-up sound, shutter sound, operation sound, and self-timer sound are called the My Camera settings. You can add your favorite images and sounds from your computer to the My Camera settings. This topic explains how to upload the My Camera settings saved onto your computer to the camera and vice versa.

Displaying the My Camera Window

- 1 Attach the supplied interface cable to the computer's USB port and the camera's DIGITAL terminal and place the camera in the correct mode for connecting.



- Methods for connecting the camera to the computer and placing it in the correct mode for connecting vary between camera models. Please refer to the *Camera User Guide*.
- Perform the settings described in *First Time Camera is Connected to a Computer* (p. 17) the first time you connect the camera to the computer.

The Camera Control Window will display.

- 2 Click the [Set to Camera] tab.

- 3 Click [Set My Camera].

The My Camera window will display.



The My Camera Window Features

ZoomBrowser EX already contains several pre-recorded My Camera settings. You can check these items with the My Camera window.

Tabs

Click here to switch between adjusting the settings individually or in themed sets.

Displays the list of settings files saved onto the computer.

Play Button

Plays the audio from the selected settings file.

Delete Button

Deletes a settings file from the computer.

Play Button

Plays the audio from the settings file in the camera.

Displays the settings in the camera.

Delete Button

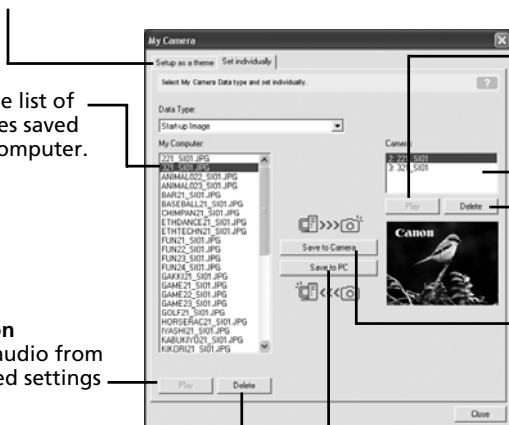
Deletes a settings file from the camera.

Save to Camera Button

Saves a computer settings file onto the camera.

Save to PC Button

Saves a camera settings file onto the computer.



Saving the My Camera Settings to the Camera



- My Camera settings can be selected and saved in either of two ways to the camera: individually or in theme sets.
- The "Animal" theme, for example, features an animal in the start-up image and animal calls in each of the sound files. The names of the prepared files for the various My Camera settings themes all begin with the same root name. The start-up image and sound files in the "Animal" theme, for example, all begin with "Animal~".



Do not detach the interface cable, turn the camera power off or disconnect the camera from the computer while the My Camera settings are being saved to the camera or the settings from the camera are being saved to the computer.

- 1** Select the [Setup as a theme] tab in the My Camera window.
To set the start-up image or sound individually, click the [Set individually] tab and select it.
- 2** Select the settings file you wish to save to the camera from the My Computer list.
- 3** Select the setting from the Camera list that you would like to change and click [Save to Camera].

This concludes the process of saving the My Camera settings to the camera.

The Camera list setting will change to the selected file. If a setting for this category has previously been saved to the camera, it will be overwritten.

Repeat steps 1-3 as required.

To use this data on the camera, change the start-up image and sound settings on the camera itself. Please see the *Camera User Guide* for these instructions.

Saving the Camera's My Camera Settings to the Computer

- 1** Select the [Setup as a theme] tab in the My Camera window.
To set the start-up image or sound individually, click the [Set individually] tab and select it.
- 2** Select the settings files from the Camera list that you wish to save to the computer.
- 3** Click [Save to PC].
- 4** Add a name to the settings file you are saving and click [OK].
This concludes the process of saving the My Camera settings to the computer.
Repeat steps 1-4 as required.

Adding New Data to the My Camera Window

Create a new image or sound file and add it to the My Camera window.

- Adding Image and Sound Files After Creating Them

Adding Original Start-up Images and Sounds After Creating Them

You can effortlessly create start-up image and sound files using the *My Camera Maker* program.

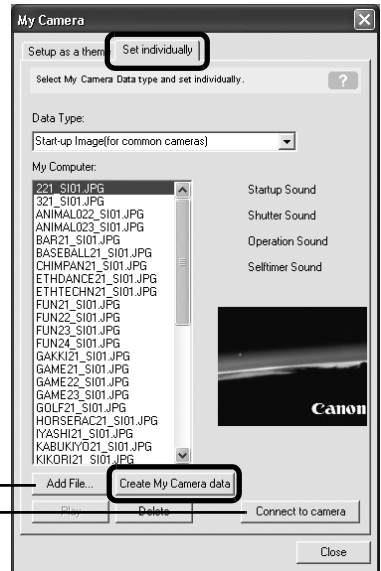
- 1 Click the [Edit] menu in the ZoomBrowser EX Main Window and select [Manage My Camera].
The My Camera window will display.
- 2 Click the [Set individually] tab in the My Camera window, followed by the [Create My Camera Data] button.

Add File Button

Adds images and sound files for use as settings files. Added files display in the list.

Connect to camera Button

Connects to the camera.




My Camera Maker will start.

- 3 Follow the instructions at the top part of the *My Camera Maker* window and create image or sound files.

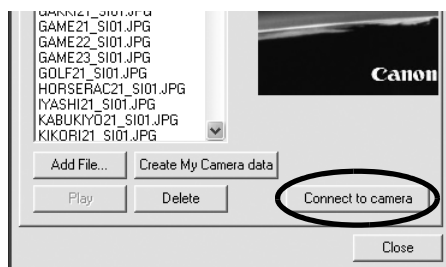
Instructions



- 4** Once you have saved the file, click  and close the My Camera Maker window. You have now succeeded in adding the file as a settings file to the computer.

- 5** To connect to the camera, click [Connect to Camera].

You can add the settings files you just added to the computer to the camera using the same procedures as in "Saving the My Camera Settings to the Camera" (p. 47).



- Use settings like those below when creating an image file for the start-up image using an image editing program other than *My Camera Maker*.

Compression Method : JPEG (Baseline JPEG)
 Sampling Rate : 4:2:0 or 4:2:2
 Image Size (w x h) : 320 x 240 pixels

- Use settings like those below when creating a sound file using a sound recording program other than *My Camera Maker*.

Compression Method : WAV (Monaural)
 Quantifying Bits : 8 bit
 Sampling Frequency : 11.025 kHz or 8.000 kHz

Use the following lengths as guidelines for the length of sound file that can be saved to the camera.

Type	Duration in Seconds	
	11.025 kHz	8.000 kHz
Start-Up Sound	1.0 sec. or less	1.3 sec. or less
Shutter Sound	0.3 sec. or less	0.4 sec. or less
Operation Sound	0.3 sec. or less	0.4 sec. or less
Self-Timer Sound	2.0 sec. or less	2.0 sec. or less

Using the Software on the Macintosh Platform – Preparations

This chapter explains the basic procedures for installing the software. Read this material before you connect the camera to the computer for the first time.

Installing the Software

Start by installing the software from the Canon Digital Camera Solution Disk.



See *ArcSoft PhotoStudio* (p. 82) for details on how to install ArcSoft PhotoStudio.

Items to Prepare

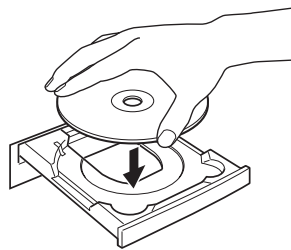
- Your camera and computer
- Canon Digital Camera Solution Disk
- Interface cable supplied with the camera

Installation Procedures

- 1 Close any programs that are running.
- 2 Place the Canon Digital Camera Solution Disk in the computer's CD-ROM drive.
- 3 Double-click the [Canon Digital Camera Installer] icon



in the CD-ROM window.



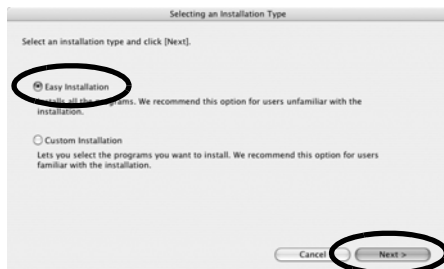
- 4 Click the Digital Camera Software [Install] button.



Installer Panel

- 5** Select [Easy Installation] and click [Next].

Select [Custom Installation] to select programs individually for installation.

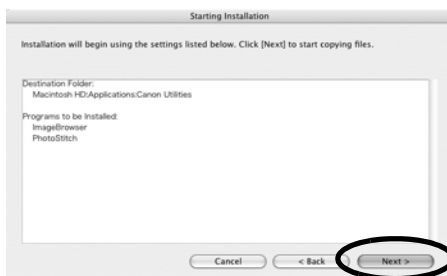


- 6** Click [Agree] if you agree to all of the terms of the software license agreement.



- 7** Review the installation settings and click [Next].

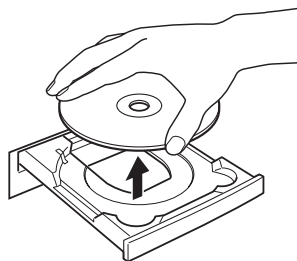
Follow the onscreen instructions to proceed.



- 8** When the installation is over, click [OK].



- 9** Click [Exit] in the installer panel and remove the disk from the CD-ROM drive. This concludes the software installation.



See *Uninstalling the Software* (p. 84) to delete the software installed with these procedures.

Continue by downloading images to the computer (p. 52).

Using the Software on the Macintosh Platform – The Basics

This chapter explains the procedures for using ImageBrowser to download the camera's images to the computer and print them.

Read this chapter after completing the preparations in the *Using the Software on the Macintosh Platform – Preparations* section.

Downloading Images to the Computer

Begin by downloading the images to your computer. The downloading procedure is slightly different according to whether you are using a camera to computer connection (see below) or a memory card reader (p. 54).



You may not be able to download the camera images if there are more than approximately 1000 images in the camera. Use a memory card reader to download in that case.

Camera to Computer Connection

- 1 Attach the supplied interface cable to the computer's USB port and the camera's DIGITAL Terminal. Prepare the camera for communication with the computer.



Procedures for attaching the camera to the computer and placing it in the correct mode for connecting vary between camera models. See the *Camera User Guide*.

The Camera Control Window will appear.

If it does not open, click the [CameraWindow] icon in the Dock (the bar at the bottom of the desktop). To set whether this window automatically opens when you connect the camera to the computer, remove the check mark from the [Start when a camera is connected] in the [File] menu in the Camera Control window.

2 Download images.

Download the images using the camera or the computer. By default, the downloaded images are saved into the [Pictures] folder.


Camera Control Window


You can adjust the settings, such as the type of image downloaded and the destination folder, by clicking [Preferences].

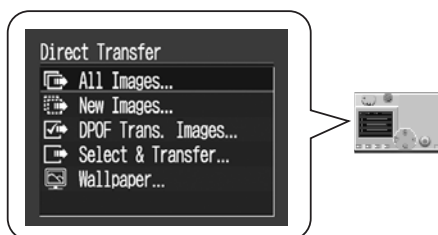


Using the Camera to Download Images (Direct Transfer Function)



- If the conditions are right for the Direct Transfer function, the Direct Transfer settings menu will appear in the LCD monitor. In addition, the  (Print/Share) button will light if your camera is equipped with one.
- See the *Camera User Guide* for instructions regarding Direct Transfer settings and procedures.

Set the Direct Transfer settings on the camera and press the  (Print/Share) button or the [SET] button.



Using the Computer to Download Images

Click [Starts to download images].





- By default, all the images that have yet to be downloaded will download.
- To download images that have had their transfer settings set with the camera, click [Preferences] and select [Images whose transfer settings were specified with the camera] as the image type to be downloaded.
- Click [Lets you select and download images] to show the camera images in a list, check the images before downloading and download only selected images.

By default, when the download is complete, the thumbnails (tiny versions) of the downloaded images display in ImageBrowser's Browser Window.

The downloaded symbol displays on downloaded folders (the symbol will disappear when you exit ImageBrowser).

Thumbnail



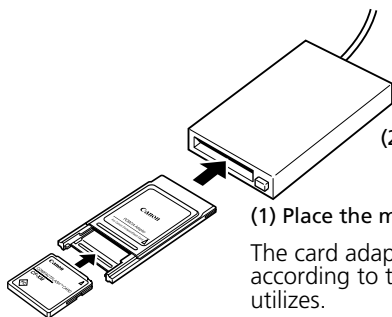
Continue by printing out an image (p. 56).

Memory Card Reader Connection

1 Insert the memory card into the reader.

Use a separately sold card adapter if required.

See the manual for the memory card reader for details on how to connect and use the reader.



(1) Place the memory card in an adapter if required.

(2) Insert the loaded adapter into the slot.

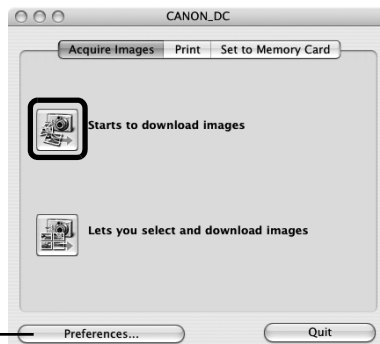
The card adapter and memory card shape may vary according to the type of memory card your camera utilizes.

The Camera Control Window will appear.

If it does not open, click the [CameraWindow] icon in the Dock (the bar at the bottom of the desktop). To set whether this window automatically opens when you connect the camera to the computer, remove the check mark from the [Start when a camera is connected] in the [File] menu in the Camera Control window.

2 Click [Starts to download images].

You can set the type of image to download and the destination folder by clicking [Preferences].



- By the default settings, all images are downloaded to the [Pictures] folder.
- To download images that have had their transfer settings set with the camera, click [Preferences] and select [Images whose transfer settings were specified with the camera] as the type of image for downloading.
- Click [Lets you select and download images] to show the memory card images in a list, check the images before downloading and download only selected images.
- See *Memory Card Folder Structure* (p. 87) for information about memory card folder structures and file names.

By default, when the download is complete, the thumbnails (tiny versions) of the downloaded images will display in ImageBrowser's Browser Window when downloading is complete.

Continue by printing out an image (p. 56).

Printing Images

There are three ways in which images may be printed: One Photo per page Print, Index Print and Layout Print. This section explains the Print 1 Image per Page and Arrange and Print sections.



Movies cannot be printed, but you can print stills after they have been extracted from movies and saved to files.

One Photo per page Print

This option prints one image per page in a standard "photo" format. If you select multiple images, it will print them on the corresponding number of pages.

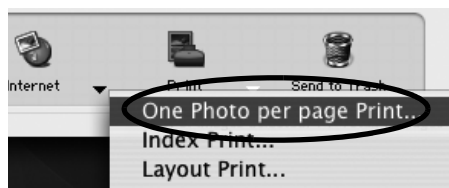
1 Select the images to print.

Clicking on an image selects it and displays a blue frame around it. To select multiple images, hold down the [shift] or [⌘] (command) key while clicking on images.



A blue frame displays around selected images.

2 Click [Print] and select [One Photo per page Print].



3 Set the categories as you feel necessary.

Selects a printer.

Selects options such as the paper size and orientation when you click [Page Setup].

Place a check mark here to print the shooting dates/times with the images.

Sets the number of copies printed.



Click this button to switch between images if you selected multiple images.

4 Click [Print].

The Print window will now open.

5 After setting the number of copies, and other settings, click [Print].

6 After the printing finishes, click to close the window.

Layout Print

Allows you to arrange multiple images on a single page and print.

1 Select images for printing in the Browser Window.

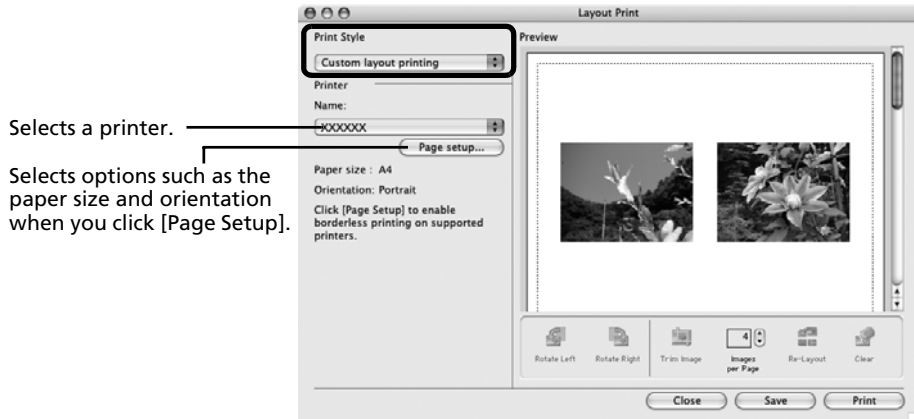
Clicking on images selects them and changes the background to blue.

To select multiple images, hold the [shift] or [⌘] key down while clicking on images.

2 Click [Print] and select [Layout Print].



- 3** In the Print Style category, select [Custom layout printing] and set the categories as you feel necessary .




- 4** Change the layout or add text as you feel necessary in the Layout Print window. See "*Layout Print Window Features*" (p. 59) for an explanation of procedures for changing the layout or adding text.

- 5** Click [Print].

This will open the Print window.

- 6** After setting the number of copies, and other settings, click [Print].

- 7** After the printing finishes, click  to close the window.

To save the layout, click [Save]. To proceed without saving, click [Don't Save]. When the save operation is complete, the original ImageBrowser window will be restored.



You can print a contact sheet of the thumbnails or print the image shooting information if you click [Print] in the Browser Window and select [Index Printing].

Layout Print Window Features

When the [Custom layout printing] option is selected in the Layout Options window, you can freely change the size and position of the images for printing.

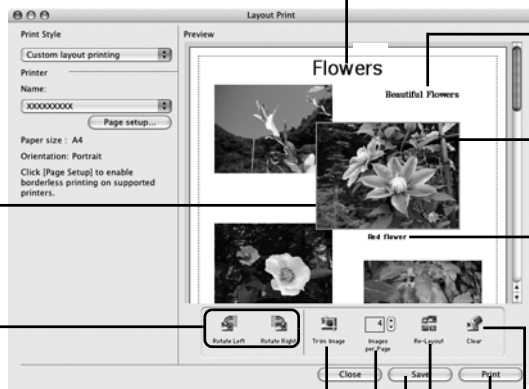
Edit the Page Title

Open the [Edit] menu and select [Edit Header].

Change the Image Size

Drag the border to resize the image.

Rotate the selected image.



Add Text

Open the [Edit] menu and select [Add Text].

Change the Layout
Drag the images to change the layout.

Add Captions to Images

Click the image and then the [Edit] menu and select [Edit Caption].

A part of the image is trimmed.

Change the default number of images printed per page.

Deletes images from the Layout Print window.

Displays the Print dialog.

Vertically and horizontally lines up images in the window.

Saves the layout.



To print the shooting date, shooting time or the file name as the caption, click the [ImageBrowser] menu and select [Preferences]. Select [Print] from the list box at the upper left of the Preferences window and place check marks besides the desired items in the [Items to Print in Caption] category.

This chapter explained the ImageBrowser basics.

Once you have mastered them, try the advanced techniques.

Using the Software on the Macintosh Platform — Advanced Techniques (p. 60).



A PDF-format manual for ImageBrowser is also available. It provides further information about the program's features and procedures. See *Using the PDF Manuals (p. 2)*.

Using the Software on the Macintosh Platform – Advanced Techniques

This chapter explains various ImageBrowser features.

Proceed to this chapter once you have mastered the basic ImageBrowser procedures in the *Using the Software on the Macintosh Platform – The Basics* chapter.



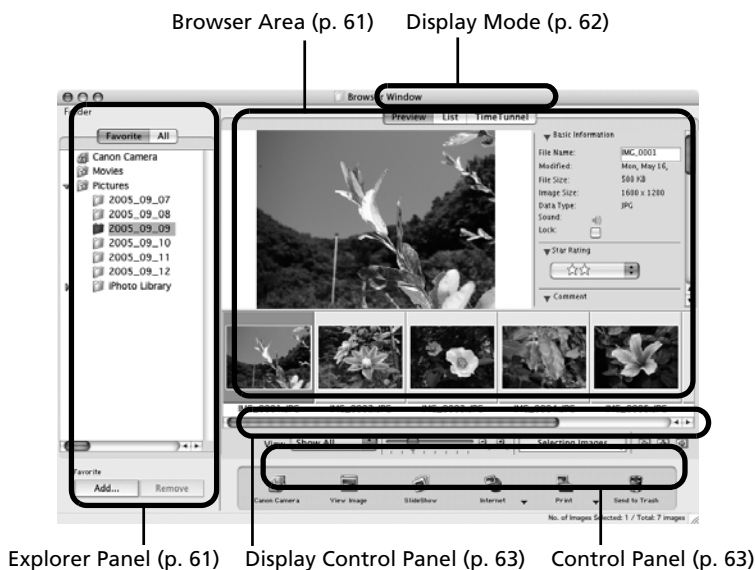
To confirm whether your camera supports these functions, please refer to *Information about Your Camera* (p. 98).

The ImageBrowser Windows

This section describes the principal ImageBrowser windows: the Browser Window, Viewer Window and File Information Window.

Browser Window

This window is for displaying and organizing images downloaded to the computer.



Explorer Panel

- Use this area to select folders. The images in the selected folder display in the Browser Area.
- If you selected Favorite Folders, only the folders registered in advance as Favorite Folders will display. You are recommended to register a folder that you use frequently as one of the Favorite Folders. If you selected All Folders, all the folders will display.

Methods for Registering a Favorite Folder

- If [Favorite Folders] is displayed: click [Add] and select a folder.
- If [All Folders] is displayed: select a folder and click [Add to Favorites].

Browser Area

- The images in the folder selected in the Explorer Panel will display here. The display style will vary according to your Display Mode selection.

Methods for Selecting Images in the Browser Area

- Selecting a single image: click on an image.
- Selecting multiple images: click on the first image and then hold the [shift] or [⌘] (command) key down while clicking on additional images.
- Selecting consecutive images: click on the first image and then hold the [shift] and [option] keys down while clicking on the last image.

- The following types of icon will display around images according to their attributes.



Images shot with the camera's Stitch Assist mode



RAW images



Movies



Images with sound memo attachments



Protected images



Images shot with the camera's AEB function



Images shot with the camera on end that are rotated in the display only

Display Mode

- Selects the display style for the Browser Area.

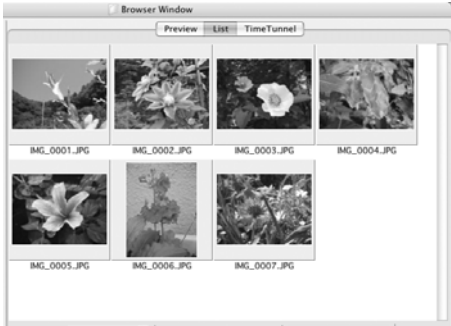
Preview

This mode displays the image at a larger size as well as the image information.



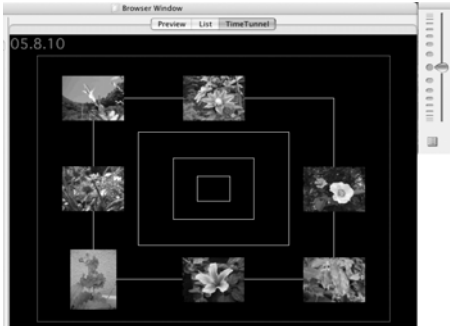
List

Displays the images in the folder selected in the Explorer Panel section in rows and columns.



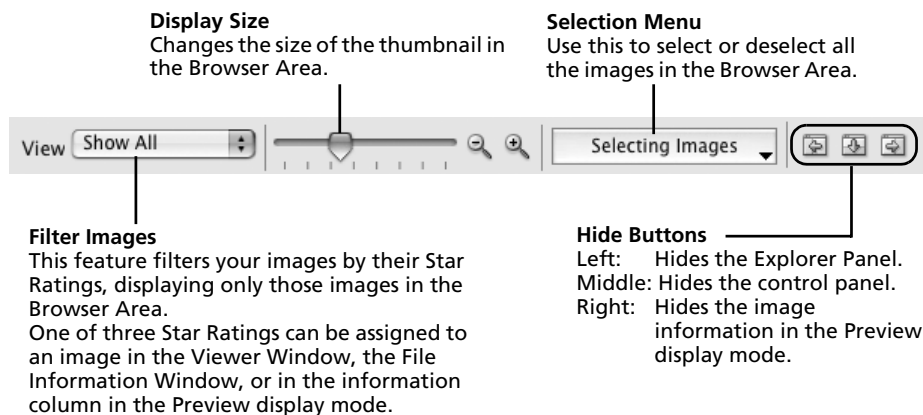
TimeTunnel

Displays images in chronological order in a simulated time tunnel. You can move along a timeline from the past to the present using the slider that appears at the window's right.



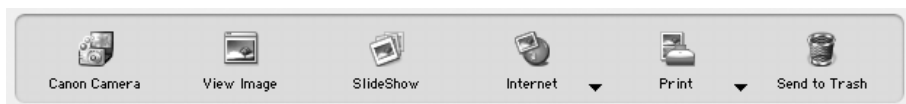
Display Control Panel

- This panel adjusts the display settings for the Browser Area.



Control Panel

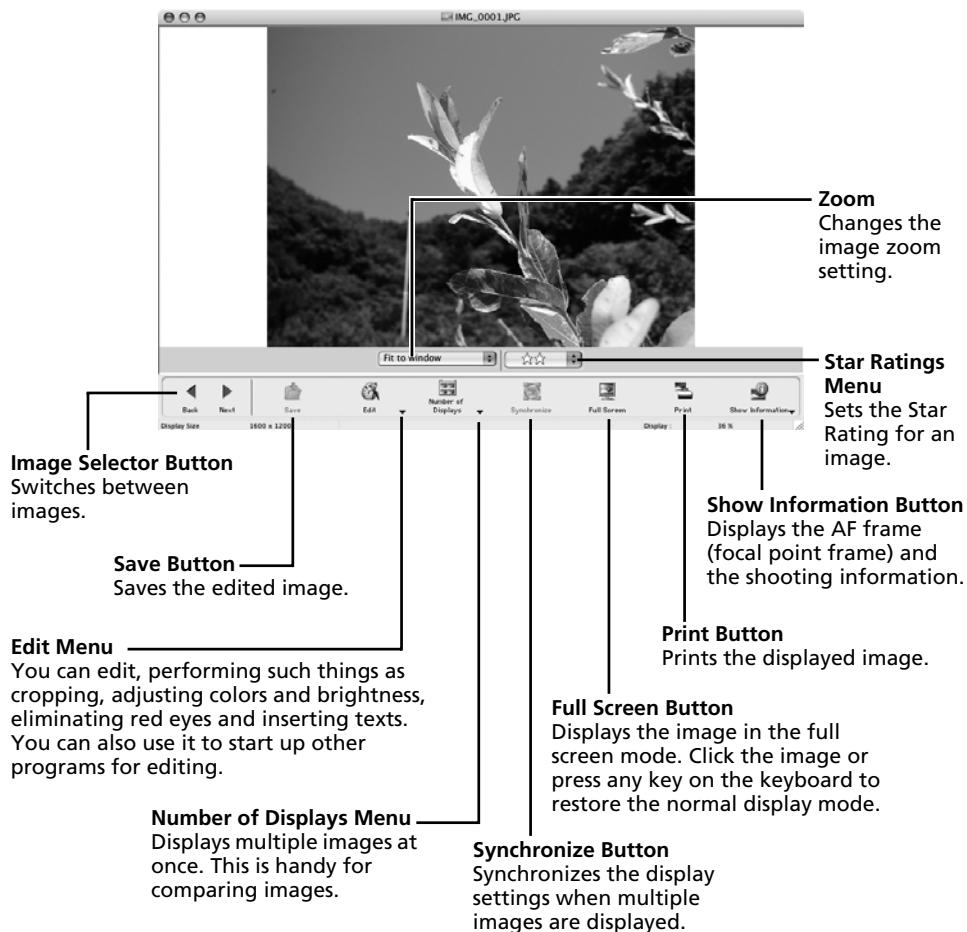
- The control panel contains buttons for executing various functions.



The functions displayed here are explained in the *Control Panel Features* section (p. 66).

Viewer Window

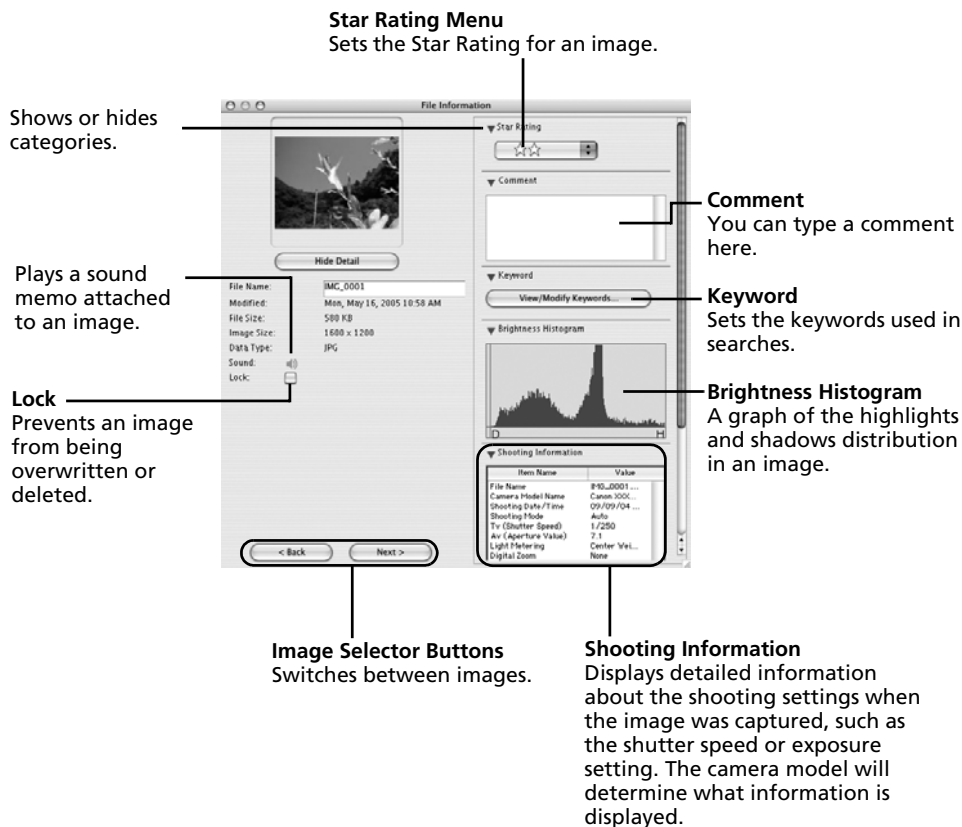
Double-click an image in the Browser Area to display it in the Viewer Window.



- If a RAW image is displayed, the [Show Original Image] button displays beneath it. Clicking this button displays the converted image in the Viewer Window.
- If a movie file is displayed, the [Save as Still Image] button will display beside the Star Ratings.

File Information Window

The File Information Window displays when you select an image in the Browser Area, click the [File] menu and select [Get Info]. The File Information Window does not display in the Preview display mode.



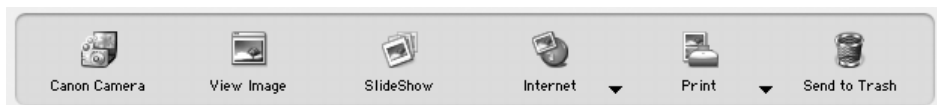
ImageBrowser Features

This section provides a brief introduction to ImageBrowser features.



To confirm whether your camera supports these functions, please refer to *Information about Your Camera* (p. 98).

Control Panel Features



Canon Camera

Opens the Camera Control Window, which lets you perform the following operations.

Acquire Images

Downloads images from the camera/memory card (p. 52, 54).

Additionally, you can download sound files recorded with the Sound Recorder function on the camera. Refer to the ImageBrowser PDF manual or Help for download instructions.

Print

Selects and prints the images in a camera or memory card. You can print numerous ways, using DPOF settings, the Index Print option, Full Page Print option, or by selecting images before printing.

Set to Camera

Sets camera settings, such as the My Camera settings (p. 77). It also uploads images from the computer to the camera/memory card.

Remote Shooting

Allows you to operate the camera shutter from the computer (p. 73).

View Image

Displays the selected image or movie in the Viewer Window.

SlideShow

Starts a slide show of the selected images. Click the [View] menu and select [Slide Show Options] to set the slide show settings.

Internet

Create Images for Email

Converts the selected images to the appropriate size for transmission by e-mail. You can also use it to automatically start an e-mail program after conversion.

Print

One Photo per page Print

Prints one image per page (p. 56).

You can print "photo" prints easily.

Index Print

Lines up small versions of the images in rows and prints.

Layout Print

Allows you to freely arrange multiple images on a single page and print. You can also insert captions and titles (p. 57).

Send to Trash

Sends the selected images or folders to the Trash.

Functions Selected from Menus

Search Images: [File] menu, [Search]

Searches for images based on such criteria as Star Ratings, dates, keywords, keywords or captions.

Export Images: [File] menu, [Export Images]

- Edit and Save: allows you to change the file type or size and export the file.
- Export Shooting Properties: allows you to export the shooting properties as a text file.
- Export as a Screensaver: Exports the image as a screen saver file.
- Export an Image as Wallpaper: Exports the image as a wallpaper file.

Organize Images: [File] menu, [Organize Image]

- Sort Images: sorts images according to criteria such as the shooting date or Star Rating and saves them into a specified folder.
- Rename: changes the files names of multiple images in a single pass.

Convert RAW Images: [File] menu, [RAW image processing]

Converts RAW images. You can adjust the image brightness, contrast and color balance among other attributes during conversion (p. 71).

Merge Panoramas: [Edit] menu, [PhotoStitch]

Merges multiple images and creates a single large panoramic image (p. 76).

Edit Movies: [Edit] menu, [Movie Edit]

Edits movies or still images strung together. You can add titles or background music and apply various effects (p. 70).

Extracting Stills from Movies: [Edit] menu, [Extract frames from a movie]

Extracts still images from movies over a specified interval and saves them as image files.

Display Settings: [View] menu, [View Settings]

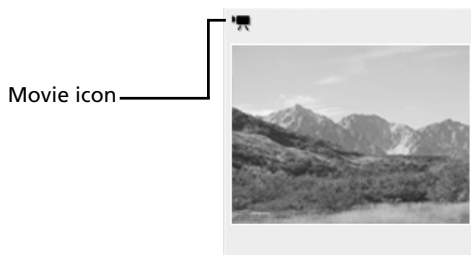
Hides or shows image information beneath the thumbnail, such as the file name or the shooting date and time.

Sort Images: [View] menu, [Sort]

Arranges image order in the Browser Area according to criteria such as the filename, file modification date, file size or shooting date.

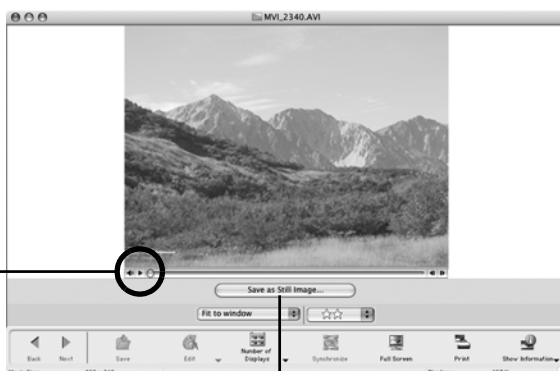
Replaying Movies

- 1 Double-click an image with a movie icon in ImageBrowser's Browser Area. The movie will appear in the Viewer Window.



- 2 Click the [Play] button.

You can control the movie's playback and sound volume.



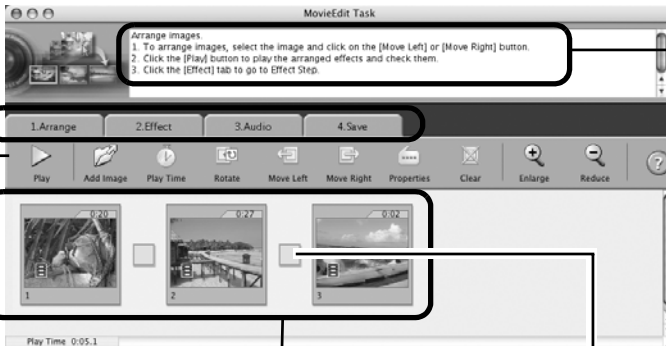
You can save the displayed scene as a still image by clicking here.

Editing Movies

You can create and edit movies: link movies and stills that have been downloaded to your computer, add background music, superimpose titles and other text, and apply various effects to the movies.

- 1** Select the image(s) to edit in ImageBrowser's Browser Area (movies or stills).
You can select multiple movies or stills.
- 2** Click the [Edit] menu and select [Movie Edit].
- 3** Follow the steps displayed in the middle of the window to edit the movie and save it.

Follow these steps to proceed.



Instructions

Click this button for detailed operational instructions.

Click this button to play the movie being edited.

Storyboard Area
Displays thumbnails of the selected images.
Links images in order from left to right.

Transition Effect Box
Appears between adjacent images and displays the symbols of the transition effects linking images.

Converting RAW Images

RAW images are extremely high-quality images that are not subject to any deterioration due to compression processing. Since they are a special type of image, they cannot be opened by many image editing programs. It is first necessary to convert them into standard image files.



- See *Information about Your Camera* (p. 98) to determine whether your camera model supports this function.
- See the *Camera User Guide* for information about the camera settings for shooting RAW images.

Procedures for Converting RAW Images

- 1 Select a RAW image in ImageBrowser's Browser Area.
- 2 Click the [File] menu and select [RAW Image Processing].

Click [OK] when a window displaying procedures for converting and adjusting RAW images appears.

The main window, the Navigator window and the Image Quality Adjustment Window will display.

You can switch between image and rotate images using the buttons in this section.

Click here if the navigator window is not open.

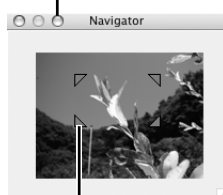
Navigator Window

Thumbnail

Check Mark




Main Window



When the preview image in the main window is zoomed, you can change the portion shown in the preview by clicking and dragging this red symbol.

- 3 Adjust the image quality as required in the Image Quality Adjustment Window. This window is explained in the *Functions of the Image Quality Adjustment Window* section.

- 4** Click the  (Save), set the file type and destination, and then click [Save].

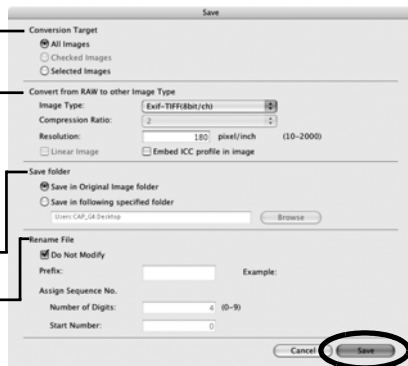
Selects the images for saving with these settings.


Select a file type _____

Set the file destination _____

You can also change the file name _____

This will convert the image.



- 5** Click  in the Main Window.

Functions of the Image Quality Adjustment Window

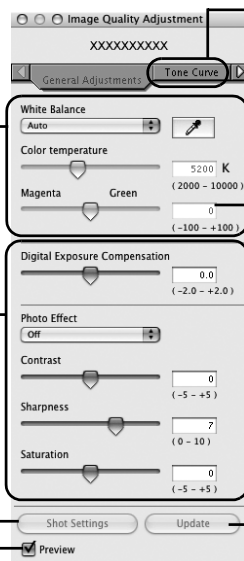
The following adjustments can be made in the Image Quality Adjustment Window. The available settings may vary depending on the camera used.

This section adjusts the white balance according to the light source and color temperature.

This section adjusts the digital exposure compensation, photo effect, contrast, sharpness, and saturation.

Restores all settings to the settings stored in the camera at the time of shooting.

The effect of the settings above can be viewed immediately if you place a check mark here.



Tone Curve Tab

You can set the levels for the RGB channels separately or together.

Advanced Adjustments Tab

You can set the settings for adaptive noise control and the color space for the output. Click the arrow to display the tab.

If you cannot set the desired setting with the slider on the left, directly enter the setting here.

Applies the settings to the displayed image



You can change the coloration of the image to your preferred settings when you convert a RAW image. You can also select preset color schemes, such as Positive Film. Furthermore, you can add your own color schemes (My Color) to apply to other RAW images when they are being converted. See the PDF manual for ImageBrowser for more information (p. 2).

Operating the Shutter Remotely

You can record still images by using a computer to control the shutter of a connected camera. This is particularly useful for checking images on the larger display of the computer as you record them and for high volume photography without worrying about filling the camera's memory card.

Preparing for Remote Shooting

- 1 Attach the supplied interface cable to the computer's USB port and the camera's DIGITAL terminal and place the camera in the correct mode for connecting.



- Methods for connecting the camera to the computer and placing it in the correct mode for connecting vary between camera models. Please refer to the *Camera User Guide*.
- If the Camera Control Window does not automatically appear, click the [CameraWindow] icon in the Dock (the bar at the bottom of the desktop).

The Camera Control Window will display.

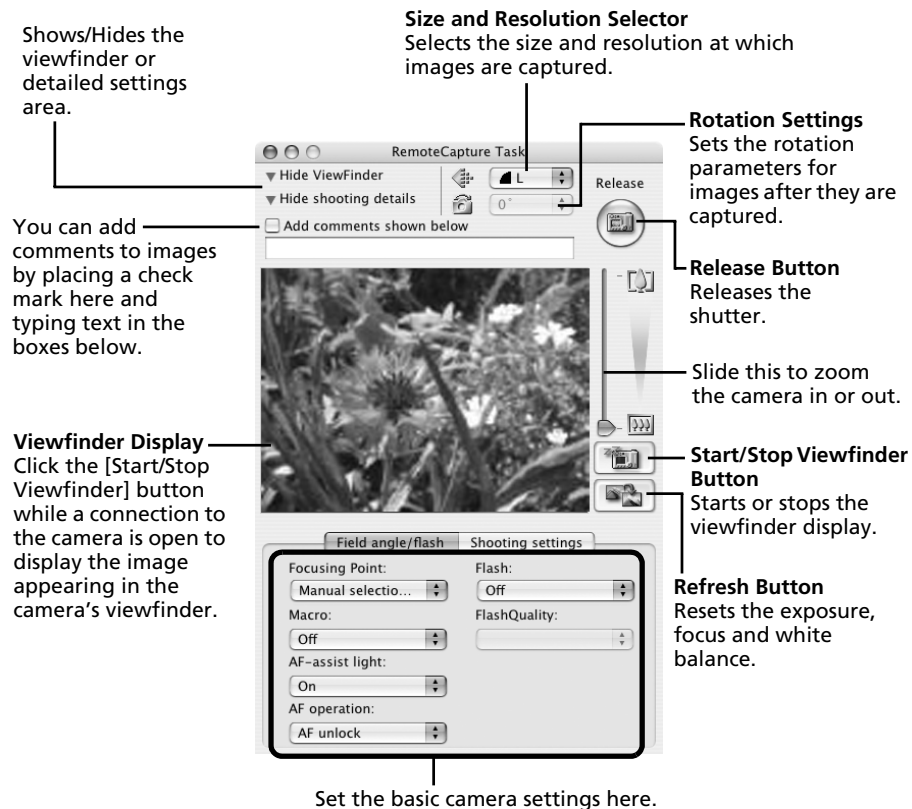
- 2 Open the lens cover or remove the lens cap on models equipped with them. Proceed to the next step if your model does not have one.
- 3 Click the [Remote shooting] tab.




- 4 Click [Starts Remote Shooting].
- 5 Select a destination for the captured images and click [Choose].

RemoteCapture Task Window

The RemoteCapture Task window has the following features.




- The settings available in the RemoteCapture Task window vary between camera models.
- RemoteCapture Task locks the exposure and focus settings for the subject matter in the Viewfinder section. If the lighting or distance to the subject changes, click  to reset these settings.

Remote Shooting



Ensure that you turn off your computer's sleep mode before you begin remote shooting. The device performance cannot be guaranteed if the computer enters the sleep mode.

- 1** Click  and check the subject in the viewfinder.
- 2** Change the image size or resolution, the rotation settings and the settings at the bottom of the window as required.

If you intend to hold the camera vertically to photograph a subject, you can save the image to the computer with the correct orientation if you set the rotation settings in advance.



If your camera is equipped with the Auto Rotate function and you set it to On, the image will automatically be rotated and appear in the correct viewing orientation in the RemoteCapture Task window.

- 3** Click the [Release] button.



- You can release the shutter by pressing the camera's shutter button or the keyboard's space key.
- Other than the shutter button, the camera's buttons and switches, including the zoom, cannot be operated while the camera is being controlled with the Remote Shooting function.
- You may notice that the interval between the shutter release and activation is slightly longer for remote shooting than when the camera is used independently.

Merging Panoramic Images - PhotoStitch

You can create a wide panoramic image by merging several images. It is easier to merge images if they are shot with the camera's Stitch Assist mode because PhotoStitch can automatically detect the image order and orientation.

Images Shot in Stitch Assist Mode

A sequence of images shot in Stitch Assist mode is saved into a single folder when it is downloaded from the camera. In addition, the symbol below displays by the image in the Browser Area.

Symbol displayed by images shot in Stitch Assist mode.

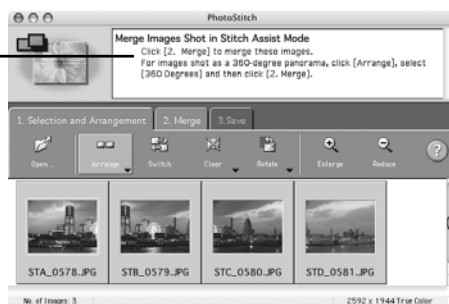


- See the *Camera User Guide* for information about shooting in Stitch Assist mode.
- Images shot in Stitch Assist mode with a wide converter, teleconverter or close-up lens cannot be merged accurately.

Starting PhotoStitch

- 1 Select a series of images in the ImageBrowser's Browser Area.
- 2 Click the [Edit] menu and select [PhotoStitch].

Instructions



- 3 Merge the images following the instructions in the guidance panel at the top of the PhotoStitch window.

Enjoy Customizing Your Camera with the My Camera Settings

The start-up image, start-up sound, shutter sound, operation sound, and self-timer sound are called the My Camera settings. You can add your favorite images and sounds from your computer to the My Camera settings. This topic explains how to upload the My Camera settings saved onto your computer to the camera and vice versa.

Displaying the My Camera Window

- 1 Attach the supplied interface cable to the computer's USB port and the camera's DIGITAL terminal and place the camera in the correct mode for connecting.



- Procedures for attaching the camera to the computer and placing it in the correct mode for connecting vary between camera models. See the *Camera User Guide*.
- If the Camera Control Window does not automatically appear, click the [CameraWindow] icon in the Dock (the bar at the bottom of the desktop).

The Camera Control Window will display.

- 2 Click the [Set to Camera] tab.



- 3 Click [Set My Camera].
The My Camera window will display.

The My Camera Window

ImageBrowser already contains several pre-recorded My Camera settings items. You can check these items with the My Camera window.

Type

Select the settings type.

Displays the list of settings files saved onto the computer.

Save to Camera Save to Computer

Play Button

Plays the audio from the settings file in the camera.

Displays the settings in the camera.

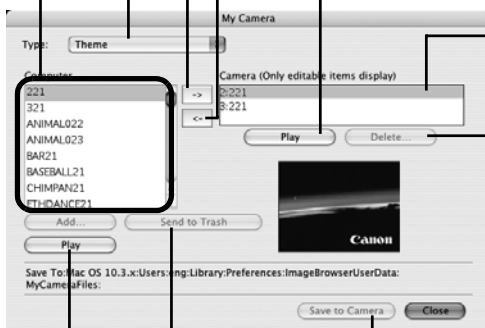
Delete Button
Deletes a settings file from the camera.

Play Button

Plays the audio from the selected settings file.

Send to Trash Button
Deletes a settings file from the computer.

Save to Camera Button
Click here to save the settings onto the camera.




Saving the My Camera Settings to the Camera



- My Camera settings can be selected and saved in either of two ways to the camera: individually or in theme sets.
- The "Animal" theme, for example, features an animal in the start-up image and animal calls in each of the sound files. The names of the prepared files for the various My Camera settings themes all begin with the same root name. The start-up image and sound files in the "Animal" theme, for example, all begin with "Animal~".

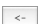


Do not detach the interface cable, turn the camera power off or disconnect the camera from the computer while the My Camera settings are being saved to the camera or the settings from the camera are being saved to the computer.

- 1 Select the type of setting in the Type list box that you wish to save to the camera.
- 2 Select the setting from the Computer list that you would like to add.
- 3 Select the setting in the Camera list that you would like to change and click the  button.
The Camera list setting will change to the selected file. If a setting for this category has previously been saved to the camera, it will be overwritten.
Repeat steps 1-3 as required.
- 4 Click the [Save to Camera] button.

This concludes the process of saving the My Camera settings to the camera. To use this data on the camera, change the start-up image and sound settings on the camera itself. Please see the *Camera User Guide* for these instructions.

Saving the Camera's My Camera Settings to the Computer

- 1 Select the type of setting you wish to save to the computer from the Type list box.
- 2 Select the setting in the Camera list that you wish to save to the computer.
- 3 Click the  button.
- 4 Input a file name to the selected setting and click the [OK] button.
This concludes the process of saving the My Camera settings to the computer.
Repeat steps 1-4 as required.

Adding New Data to the My Camera Window

Create a new image or sound file and add it to the My Camera window.

- Adding Image and Sound Files After Creating Them

Create an Original Start-up Image File and then Add It

Start by using an image editing program to create the image file that will become the start-up image and save it to the computer. Create a JPEG image at a size of (w) 320 x (h) 240 pixels.

- 1 Click the [File] menu in the ImageBrowser Main Window and select [Canon Camera] and [My camera].

The My Camera window will display.

- 2 Select the [Start-up Image] in Type.

- 3 Click [Add].

Add Button
Adds images and sound files for use as settings files. Added files display in the list.



Connect to Camera Button
Connects to the camera.

- 4 Select the file you created and click [Open].

This concludes the process for adding new data.

- 5 To connect to the camera, click [Connect to Camera].

You can add the settings files you just added to the computer to the camera using the same procedures as in "Saving the My Camera Settings to the Camera" (p. 79).

Add an Original Sound File

Change the file to a WAV sound file after you have copied the sound file to the computer. Then proceed with the steps as described in *Create an Original Start-up Image File* and then *Add It*.



- Use settings like those below when creating an image file for the start-up image with an image editing program.

Compression Method : JPEG (Baseline JPEG)

Sampling Rate : 4:2:0 or 4:2:2

Image Size (w x h) : 320 x 240 pixels

- Use settings like those below when creating a sound file with a sound recording program.

Compression Method : WAV (Monaural)

Quantifying Bits : 8 bit

Sampling Frequency : 11.025 kHz or 8.000 kHz

Use the following lengths as guidelines for the length of sound file that can be saved to the camera.

Type	Duration in Seconds	
	11.025 kHz	8.000 kHz
Start-Up Sound	1.0 sec. or less	1.3 sec. or less
Shutter Sound	0.3 sec. or less	0.4 sec. or less
Operation Sound	0.3 sec. or less	0.4 sec. or less
Self-Timer Sound	2.0 sec. or less	2.0 sec. or less

Appendices


This chapter introduces the CD-ROM supplied with your camera and the procedures for installing the programs. It also explains how to uninstall the programs. Read the *Troubleshooting* section in this chapter if you experience a problem using the programs.

ArcSoft PhotoStudio


ArcSoft PhotoStudio is a high-performance yet easy-to-use image editing program from ArcSoft, Inc. It can process, edit and print images. It includes color corrections, brightness adjustments and special effects. Install it from the supplied CD-ROM, the Canon Digital Camera Solution Disk, as required.

Installing ArcSoft PhotoStudio

Windows

- 1** Close all programs that are running.
- 2** Place the Canon Digital Camera Solution Disk in the CD-ROM drive.
If the installer panel displays, click [Exit] to close it.
- 3** Click the [Start] menu, and select [My Computer].
Windows 2000, Windows Me and Windows 98 SE users, double-click the [My Computer] icon on the desktop.
- 4** Right-click the CD-ROM icon and select [Open].
- 5** Double-click the [ARCSOFT] folder or right-click it and select [Open], and double-click the [SETUP.EXE] icon .
Follow the onscreen messages to proceed with the installation.

Macintosh

- 1** Close all programs that are running.
- 2** Place the Canon Digital Camera Solution Disk in the CD-ROM drive.
- 3** Open the CD-ROM and double-click [ARCSOFT], followed by the [PhotoStudio Installer] icon .
Follow the onscreen messages to proceed with the installation.
- 4** Click [OK] when a message appears stating that the installation is complete.

Starting ArcSoft PhotoStudio

You can start ArcSoft PhotoStudio from within ZoomBrowser EX (Windows) or ImageBrowser (Macintosh).

ZoomBrowser EX

- 1** Click [Edit] in the Task Area of the Main Window, followed by [Edit Image].
- 2** Confirm that [1. Select Images] is selected and select an image to edit.
- 3** Click [2. Select Editing Tool] and select [Edit with external image editor].
- 4** Select ArcSoft PhotoStudio from the program list and click [3. Finish].



If you cannot select ArcSoft PhotoStudio, register the program using the following procedures.

1. In Step 3 above, select [Edit with external image editor] and click [Manage List].
2. Click [Add] and select [ArcSoft PhotoStudio].

ImageBrowser

- 1** Select an image to edit, click the [Edit] menu and select [ArcSoft PhotoStudio].

Manual for ArcSoft PhotoStudio

You can obtain the ArcSoft PhotoStudio manual from the ArcSoft, Inc., website. Use your browser program to download the manual from the following URL:

<http://www.arcsoft.com/support>

Uninstalling the Software

The procedures for uninstalling the software are only required when you wish to delete the programs from your computer or when reinstallation is required to fix corrupted files.

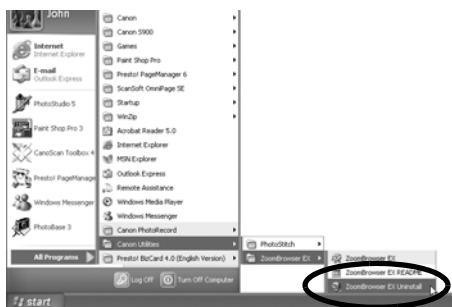
Uninstalling the Software (Windows)

Software Installed from the Canon Digital Camera Solution Disk (excluding ArcSoft PhotoStudio)

This explanation uses ZoomBrowser EX to demonstrate how to uninstall a program.

- 1 Click the Windows [Start] menu and select [All Programs] or [Programs], followed by [Canon Utilities], [ZoomBrowser EX] and [ZoomBrowser EX Uninstall].

The uninstall utility will start and remove ZoomBrowser EX.



- You can remove other programs with the same procedures.
- To uninstall CameraWindow, be sure to follow the following procedures.
 1. Click the [Start] menu and select [All Programs] or [Programs], followed by [Canon Utilities], [CameraWindow], [PowerShot - IXY-IXUS - DVx] and [CameraWindow DC_DVx Uninstall].
The "x" stands for a number. If more than one exists, delete all copies of the program before proceeding to Step 2.
 2. Click the [Start] menu and select [All Programs] or [Programs], followed by [Canon Utilities], [CameraWindow], [EOS Digital] and [CameraWindow Uninstall].
 3. Click the [Start] menu and select [All Programs] or [Programs], followed by [Canon Utilities], [CameraWindow] and [CameraWindow Uninstall].
- PhotoRecord can be uninstalled by clicking the Windows [Start] menu and selecting [Programs] or [All Programs], followed by [Canon PhotoRecord] and [PhotoRecord Uninstall].

Uninstalling ArcSoft PhotoStudio

ArcSoft Camera Suite 2.1, ArcSoft Camera Suite 1.3

- Uninstall the program by clicking the [Start] menu and selecting [Control Panel] and [Add or Remove Programs].
- With Windows 2000/Me/98, uninstall the program by clicking the [Start] menu and selecting [Settings] followed by [Control Panel] and [Add/Remove Programs].

Uninstalling the USB Driver (Windows)

Uninstall the USB Driver using the following procedures if you are using Windows 2000, Windows Me or Windows 98 SE.

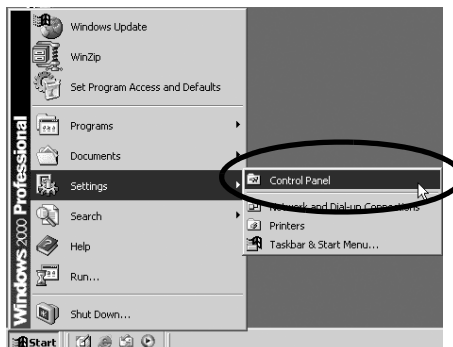


It is essential to note that you will not be able to download images if you uninstall the USB driver.



You do not need to uninstall the USB driver with Windows XP.

- 1** Attach the supplied interface cable to the computer's USB port and the camera's DIGITAL Terminal. Prepare the camera for communication with the computer.
For interface cable connection instructions, see the *Camera User Guide*.
- 2** Click the [Finish] button if the Camera Control Window displays.
- 3** Click the [Start] menu and select [Settings], followed by [Control Panel].

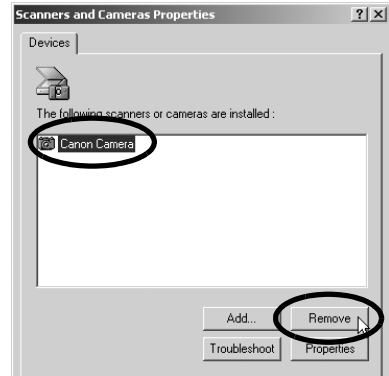


- 4** Double-click the [Scanners and Cameras] icon or folder.



- 5** Delete your camera model name or [Canon Camera] in the [Scanners and Cameras Properties] dialog.

Windows Me users should delete their camera model or [Canon Camera] in the [Scanners and Cameras] folder.



Windows 2000

Select your camera model name or [Canon Camera] and click [Remove].

Windows Me

Select your camera model name or [Canon Camera], right-click the mouse and select [Delete].

Windows 98 SE

Select your camera model name or [Canon Camera] and click [Remove]. Then turn off the camera and remove the interface cable from the computer's USB port.



If your camera model name does not appear here, see the *Camera not detected, Events dialog won't display or images will not download to the computer* (p. 90) of the *Troubleshooting* section.

- 6** Click the Windows [Start] menu and select [All Programs] or [Programs], followed by [Canon Utilities], [Camera TWAIN Driver x.x] and [Uninstall TWAIN Driver]. A version number appears in place of the "x.x".
- Windows 2000, Windows 98 SE: Perform Step 6 with no substitutions.
 - Windows Me: Substitute the following for the underlined portions of Step 6. [Camera WIA Driver x.x], [Uninstall WIA Driver]

The uninstall process will start.

To connect the camera to the computer and download after this point, use the following procedures.

1. Reinstall the driver.
2. Connect the camera to the computer with the interface cable.

Uninstalling the Software (Macintosh)

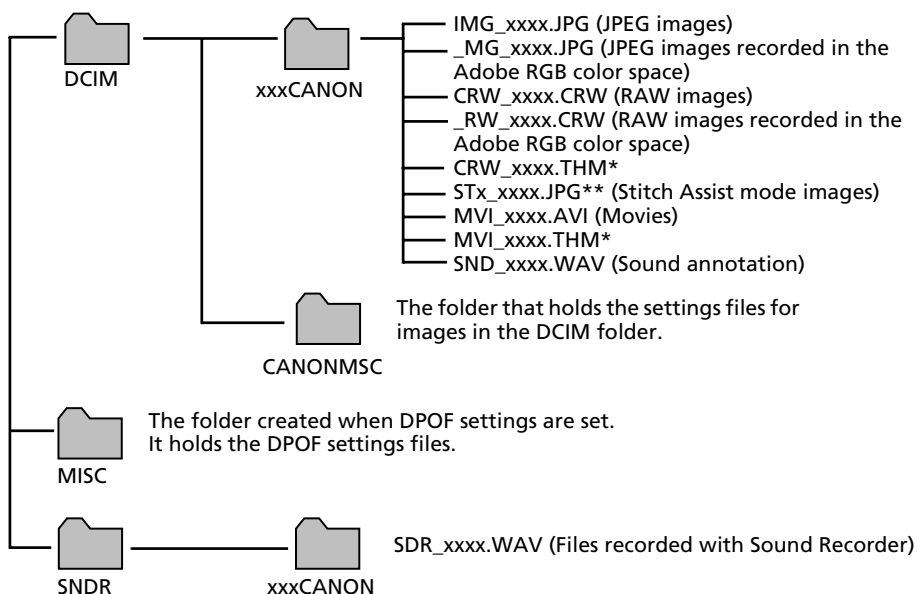
Uninstall the programs by dragging the application's folder (the folder in which it was installed) into the Trash, and then empty the Trash.



Please be careful not to accidentally delete any folders with downloaded images that may be contained within the application folder.

Memory Card Folder Structure

The images on a memory card are placed in the [DCIM] folder in subfolders labeled [xxxCANON], where the "xxx" represents a number in the range 100 - 998.



- *Files with the THM extension are the thumbnail image files for the camera's index replay mode.
- The "xxxx" in file names represent four-digit numbers.
- **Each successive file shot in Stitch Assist mode is assigned a letter starting from "A," which is inserted as the third digit in the name. i.e. [STA_0001.JPG], [STB_0002.JPG], [STC_0003.JPG]...
- All folders except the "xxxCANON" folders contain image settings files. Do not open or delete them.

Method for Downloading to a Computer without Additional Software

This explains the method for downloading images to a computer without installing ZoomBrowser EX/ImageBrowser.

Windows XP (Installation of USB Driver Not Required)

Your camera uses a standard image transfer protocol called Picture Transfer Protocol (PTP). With PTP and Windows XP, all you need do is connect the camera to the computer with an interface cable to easily download images using the Scanners and Cameras Wizard or other procedures. However, there are some inconveniences and limitations to this downloading method. See the *For Windows® XP and Mac OS X Users* leaflet for details.

Windows Me (with the USB driver installed)

Easily download images using the Scanners and Cameras Wizard or Windows Explorer. All you need do is connect the camera to the computer with an interface cable.

See the Windows Help system for information about the Scanners and Cameras Wizard and Windows Explorer.

Troubleshooting

Please read this section if you encounter a problem using the software.

Start by Checking This

Investigate the following points first if you encounter a problem.



Does your computer satisfy the requirements listed in the *System Requirements* section (p. 8)?



Is the camera correctly connected to the computer?

See the *Camera User Guide* for the correct connection procedures. Also check to ensure that you are using the correct cable and that it is securely attached at both ends.



Is the camera set to the playback mode? (some models only)

Some models require the camera to be set to the playback mode to transfer data. See the *Camera User Guide* for details.



Is the battery sufficiently charged?

Check the battery charge if you are powering the camera with a battery. You are recommended to use a household power source (AC adapter) to power the camera when it is connected to a computer (if available for your camera model).

Problems

Try the suggested solutions to the common problems listed below.



USB driver installation not proceeding well (Windows)

Uninstall the driver (p. 85) before reinstalling it with the procedures in *Installing the Software and USB Driver* (p. 11).

**Add New Hardware Wizard or New Hardware Found (Windows 2000) Wizard displays when the camera is connected to the computer with an interface cable.**

Click [Cancel] to close the window. Temporarily disconnect the camera from the computer. Next, read *Start by Checking This* on the previous page and resolve the problem.


**Images won't download into a TWAIN-compliant program (Camera and computer connected via interface cable (Windows 2000, Windows 98 SE)).**

Click the [Finish] button in the Camera Control Window to close it.

**Cannot download images or shoot remotely. (For cameras connected to the computer via an interface cable: only cameras supporting Hi-Speed USB 2.0).**

The problem may be resolved by lowering the transmission speed for data by following the procedures below.

Solution:

Hold the **MENU** button on the camera down and press the  (Print/Share) button and **FUNC./SET** button simultaneously. In the displayed screen, select [B] and press the **FUNC./SET** button.

**Camera not detected, Events dialog won't display or images will not download to the computer (when camera is connected to the computer via an interface cable).****Cause 1:**

There is a problem with one of the items in the *Start by Checking This* section (p. 89).

Solution:

Resolve the problem.

Cause 2:

The USB driver is not installed (Windows only).

Solution:

Install it with the procedures in *Installing the Software and USB Driver* (p. 10).

Cause 3:

The USB driver is not correctly installed (Windows only).

Solution:

Uninstall the driver (p. 85) before reinstalling it with the procedures in *Installing the Software and USB Driver* (p. 11).

Cause 4:

The camera may have been recognized as another device under the following circumstances (Windows only).

- The camera was connected to the computer before the USB driver was installed.
- The [Scanners and Cameras] icon or the [Scanners and Cameras] folder cannot be found in the [Control Panel] or the [Printers and Other Hardware] window.
- Your camera model name, [Canon Camera] or a camera icon does not display in the [Scanners and Cameras Properties] dialog or the [Scanners and Cameras] folder.

Solution 1:

Start with the following procedures.

Install the USB driver with the procedures in *Installing the Software and USB Driver* (p. 11). Then connect the camera to the computer with the interface cable and prepare it to transfer data. If the USB driver is already installed, uninstall it first and then reinstall it.

Solution 2:

If the problem is not resolved with the procedures in Solution 1, continue by implementing the following procedures. The specific steps are explained below.

1. Check to see if the camera is being recognized as an "other" device.
2. Delete the driver and the setup information files if it is being recognized as an "other" device.
3. Reinstall the driver.

This section explains the specific steps for each operating system.

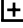
Windows XP and Windows 2000

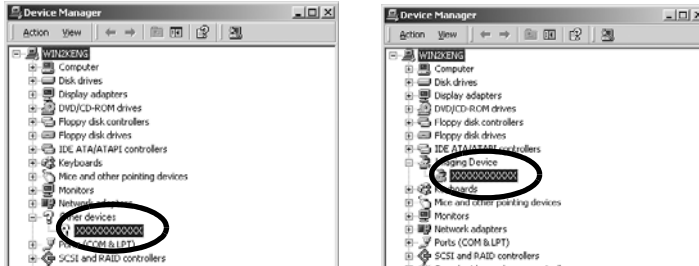


Users of Windows XP and Windows 2000 must first log in as an Administrator (computer system administrator) to delete a driver.

Check to see if the camera is being recognized as an "other" device and delete the driver if it is.

1. **Windows XP:** Click the [Start] menu, followed by [Control Panel], [Performance and Maintenance] and [System].
Windows 2000: Click the [Start] menu and select [Settings] and [Control Panel]. Double-click the [System] icon.
2. Click the [Hardware] tab, followed by [Device Manager].

- Click the  symbol beside the [Other devices] and/or [Imaging devices] category. Your camera model name or [Canon Camera] will display in these categories if it is being recognized as an "other" device.



There are other potential reasons for the problem if the "Other devices" or "Imaging devices" categories do not appear or your camera model name or [Canon Camera] does not appear. Proceed to Step 6, temporarily quit the procedures and investigate the other potential causes.

- Select your camera model name or [Canon Camera], right-click and select [Delete].
- Click [OK] in the confirmation dialog.
Delete all instances of your camera model name or [Canon Camera] if it appears in one or more places in the [Other devices] or [Imaging devices] categories.
- Close the System Properties window.



Step 7 and above are not required for Windows XP.

Delete the setup information files

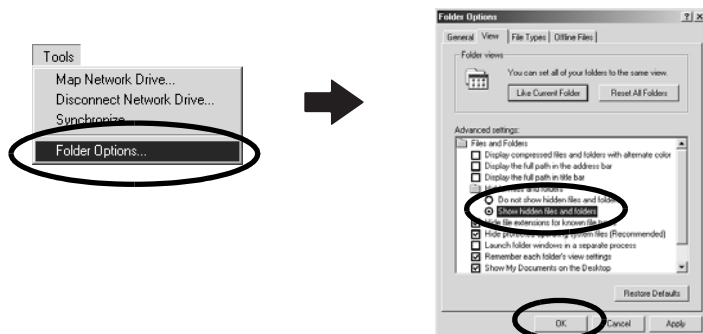
- Double-click the [My Computer] icon on the desktop, followed by the [C:] drive, [WINNT] folder and [inf] folder.

If the [inf] Folder Is Not Visible in the [WINNT] Folder

Use the following procedures to show all files and folders.

1. Open the [WINNT] folder.
2. Click the [Tools] menu and select [Folder Options].
3. Click the [View] tab.
4. In the [Files and Folders] category in the Advanced Settings section, set [Hidden files and folders] to [Show hidden files and folders]. Remove the check marks from [Hide file extensions for known file types] if it is present.
5. Click [OK] to close the dialog.

This will make the hidden files and folders visible.



8. Look for files for Canon digital cameras that start with [CAP*].
The "*" represents a number, such as 0 or 1.
[CAP*] files come in pairs of [CAP*.inf] and [CAP*.pnf] files (For example, [CAP0.inf] and [CAP0.pnf]).
9. Double-click the [CAP*] files to check their contents.
Double-clicking a [CAP*.inf] file will open it in the Windows Notepad program. Look for [;****Canon Camera Driver Setup File****] in the first line. Note down the names of these files.



Several sets of [CAP*] files may be present in the [inf] folder. Open up each file to confirm that it is an [CAP*] file for Canon digital cameras before you do anything with the file.

10. Delete the [CAP*] file set.
Delete the [CAP*.inf] and [CAP*.pnf] file for Canon digital cameras that you noted down in Step 9.



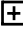
The [inf] folder contains numerous files critical to the computer's operation. Be extremely careful to delete the correct files. If you delete the wrong files, you may be unable to restart Windows.

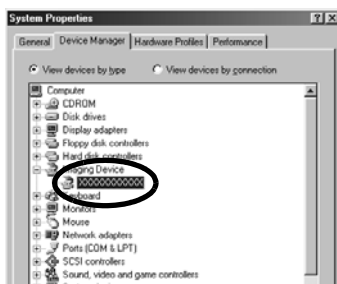
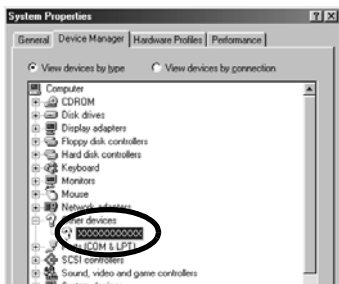
Reinstall the driver.

11. Reinstall the driver with the procedures in *Installing the Software and USB Driver* (p. 11).

Windows Me/Windows 98 SE

Check to see if the camera is being recognized as an “other” device and delete the driver if it is.

1. Click the [Start] menu and select [Settings], followed by [Control Panel]. Double-click the [System] icon. This will display the System Properties window.
2. Click the [Device Manager] tab.
3. Click the  symbol beside the [Other devices] and/or [Imaging devices] category. Your camera model name or [Canon Camera] will display in these categories if it is being recognized as an “other” device.



There are other potential reasons for the problem if the “Other devices” or “Imaging devices” categories do not appear or your camera model name or [Canon Camera] does not appear. Proceed to Step 6, temporarily quit the procedures and investigate the other potential causes.

4. Select your camera model name or [Canon Camera] and click [Remove].
5. Click [OK] in the confirmation dialog.
Delete all instances of your camera model name or [Canon Camera] if it appears in one or more places in the [Other devices] or [Imaging devices] categories.
6. Click [OK] to close the System Properties window.

Delete the setup information files.

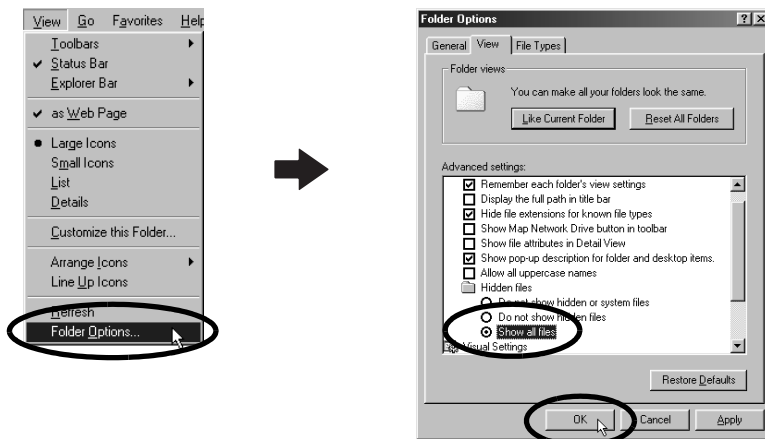
7. Double-click the [My Computer] icon on the desktop, followed by the [C:] drive, [WINDOWS] or [Windows] folder and [INF] or [Inf] folder.

If the [INF] Folder Is Not Visible in the [WINDOWS] Folder

Use the following procedures to show all files and folders.

1. Windows 98 SE: Click the [View] menu and select [Folder Options].
Windows Me: Click the [Tools] menu and select [Folder Options].
2. Click the [View] tab.
3. Windows 98 SE: Set the [Hide files] section to [Show all files].
Windows Me: Set the [Hidden files and folders] section to [Show hidden files and folders].
4. Click [OK] to close the dialog.

This will make the hidden files and folders visible.



8. Find and delete the [DRVDATA.BIN] (or [Drvdata.bin]) and [DRVIDX.BIN] (or [Drvidx.bin]) files.
9. In the [INF] or [Inf] folder, double-click the [OTHER] or [Other] folder to open it.
10. Find and delete the [Canon.IncCAP xxx.Inf] file (The xxx represents numerals.).



You do not need to delete anything if none of the above files are contained in the [OTHER] folder.



The [INF] folder contains numerous files critical to the computer's operation. Be extremely careful to delete the correct files. If you delete the wrong files, you may be unable to restart Windows.

Reinstall the driver

11. Reinstall the driver with the procedures in *Installing the Software and USB Driver* (p. 11).

Zooming Images in ZoomBrowser EX is Slow or Not Working

Some graphics cards or settings may cause the display of zoomed images in ZoomBrowser EX to slow down or malfunction. If this occurs, set your computer display's Hardware acceleration setting to a lower setting.

1. Click the Windows [Start] menu, followed by [Control Panel] and [Appearance and Themes].
With Windows 2000, Windows Me, or Windows 98 SE, click the [Start] menu and select [Settings], followed by [Control Panel].
2. Click the [Display] icon, followed by the [Settings] tab, [Advanced] button and [Troubleshoot] tab.
With Windows 2000, click the [Display] icon, followed by the [Settings] tab, [Advanced] button and [Troubleshoot] tab.
With Windows Me or Windows 98 SE, click the [Display] icon, followed by the [Settings] tab, [Advanced] button and [Performance] tab.
3. Set the [Hardware acceleration] to a setting below [Full] and click [OK].
4. Restart the computer if prompted.

If You Were Using ZoomBrowser EX Version 2 or 3

Take the following steps if you were using ZoomBrowser EX version 2 or 3 with Windows.

If Titles and Comments Were Attached to Your Images.

Take the following steps to display in version 5 the titles and comments you input in version 2/3.

1. Use Windows Explorer to open the [Program] folder within the folder in which you installed ZoomBrowser EX 5.
(e.g. C:\Program Files\Canon\ZoomBrowser EX\Program)
2. Double-click [dbconverter.exe] found in this folder to start this utility.
3. Select the database file you were using up to this point and click the [Start] button.
(e.g. C:\Program Files\Canon\ZoomBrowser EX\Database\My Database.zbd)

This will display the titles and comments input in the earlier versions in the comments section of ZoomBrowser EX 5.

If You Had Images in a Folder Below the Program Files Folder

Image files in the [Program Files] folder or a subfolder cannot be displayed in ZoomBrowser EX 5 from that location. To display these files, first perform steps 1-3 above and then carry on with Step 4.

4. Use Windows Explorer to copy the folder and the images it contains from the [Program Files] folder to another folder.
(e.g. Copy the image folders in C:\Program Files\Canon\ZoomBrowser EX\Library One to another location.)

The moved folder images can now be selected and displayed with ZoomBrowser EX 5.

Information about Your Camera

The software package and the procedures for connecting to a computer and preparing for data transfers vary between camera models. Certain software functions may also not be supported by some camera models.

Non-Supported Programs and Features

Applicable Camera Models

PowerShot SD550 DIGITAL ELPH/DIGITAL IXUS 750
PowerShot SD450 DIGITAL ELPH/DIGITAL IXUS 55
PowerShot SD30 DIGITAL ELPH/DIGITAL IXUS i zoom
PowerShot A610
PowerShot A410

Non-Supported Functions

- The camera does not record RAW images.
- The camera does not support the Display AF Frame function in the View Window.
- The camera shutter cannot be controlled from a computer.
- The camera does not support the Sound Recorder function.

Applicable Camera Models

PowerShot S80
PowerShot A620

Non-Supported Functions

- The camera does not record RAW images.
- The camera does not support the Display AF Frame function in the View Window.
- The camera does not support the Sound Recorder function.

Index

A

Adobe Reader (Adobe Acrobat Reader).....	2
ArcSoft PhotoStudio	82

B

Browser Area	
Macintosh	60, 61
Windows	27, 28
Browser Window.....	60

C

Camera Control Window	
Macintosh	52, 54
Windows	16, 19
Canon Digital Camera Solution Disk	9
Macintosh	50
Windows	11
Comment	
Macintosh	65
Windows	32
Computer	8
Connecting to a computer.....	10
Macintosh	52
Windows	14, 16
Control Panel.....	60, 63, 66

D

DIGITAL IXUS 55	98
DIGITAL IXUS 750	98
DIGITAL IXUS i zoom.....	98
Direct Transfer Function	18, 53
Display Control Panel	
Macintosh	60, 63
Windows	27, 30
Display Mode	
Macintosh	60, 62
Windows	27, 29
Downloading Images	
Macintosh	52
Windows	16

E

Easy-PhotoPrint	21
E-mail	7
Events Dialog.....	17, 90
Extract Stills from Movies	7

F

Favorite Folder	
Macintosh	61
Windows	28
File Information Window	65
Folders Area	27, 28
Function Buttons	27, 30

I

Image Icon Attribute	
Macintosh	61
Windows	28
ImageBrowser	6, 7, 9
Index Print	
Windows	21
Index Printing	
Macintosh	58
Information about Your Camera	98
Installer Panel	
Macintosh	50
Windows	12
Installing Software	
Macintosh	50
USB Driver	11
Windows	11

K

Keyword	
Macintosh	65
Windows	32

L

Layout Print	
Macintosh	57
Windows	23

M

Main Window	27
Memory Card Folder Structure.....	87
Memory Card Reader	
Macintosh	54
Windows	19
Merging Panoramic Images	
Macintosh	76
Windows	44
Method for Downloading to a Computer without Additional Software	88
My Camera Maker	48

My Camera Settings	
Macintosh	77
Windows	45

O

One Photo per Page Print	
Macintosh	56
Windows	21
Operating the Shutter Remotely	7
Macintosh	73
Windows	41

P

PDF Manuals	2
PhotoRecord	6
PhotoStitch	6
Macintosh	76
Windows	44
PhotoStudio	82
PowerShot A410	98
PowerShot A610	98
PowerShot A620	98
PowerShot S80	98
PowerShot SD30 DIGITAL ELPH	98
PowerShot SD450 DIGITAL ELPH	98
PowerShot SD550 DIGITAL ELPH	98
Print Layout Settings	
Macintosh	59
Print/Share button	18, 53
Printing Images	
Macintosh	56
Windows	21
Printing with the date	
Macintosh	59
Windows	24
Programs and Compatible	
Operating Systems	9
Properties Window	32
PTP (Picture Transfer Protocol)	
Windows	88

Q

QuickTime	
Windows	36

R

Remote Shooting	
Macintosh	73
Windows	41

Replaying Movies	
Macintosh	69
Windows	36

S

Scanners and Cameras Wizard	88
Searching Images	
Macintosh	67
Windows	33
Shooting Information	
Macintosh	65
Windows	32
Star Rating	
Macintosh	63, 64, 65
Windows	30, 31, 32
Stitch Assist Mode	
Macintosh	76
Windows	44
System Requirements	8

T

Task Area	27, 28, 33
Troubleshooting	89
Start by Checking This	89

U

Uninstalling Software	
Macintosh	86
Windows	84
USB Driver	
Uninstalling	85
USB Driver (TWAIN/WIA Driver)	9, 13

V

Viewer Window	
Macintosh	64, 69
Windows	31

W

Windows Explorer	88
------------------------	----

Z

ZoomBrowser EX	7, 9
Version 2/3	96

MEMO

