

PowerShot SD500

DIGITAL ELPH

DIGITAL IXUS 700

CDI-E173-010

XXXXXX

© 2005 CANON INC.

PRINTED IN JAPAN

The following manuals are supplied with your camera. Please refer to them as need be.

Contents of This Guide

Reference Guides

Included accessories and separately sold equipment information.

1. Install the battery pack and the SD card.

2. Shoot images with the camera.

3. Play back the images.

4. Erase any unwanted images.

Learn the names of camera components.

5. Print the images.

6. Install the software.

Connect the camera to a computer.

Windows

Macintosh

7. Download the images to a computer.

Windows

Macintosh

What you can do with the software

The various ways of using the software

System Map

This Guide

Quick Start Guide

Camera User Guide

Direct Print User Guide

Supplied with a printer

Printer User Guide

• Camera User Guide

• Software Starter Guide

• ZoomBrowser EX Software User Guide

• ImageBrowser Software User Guide

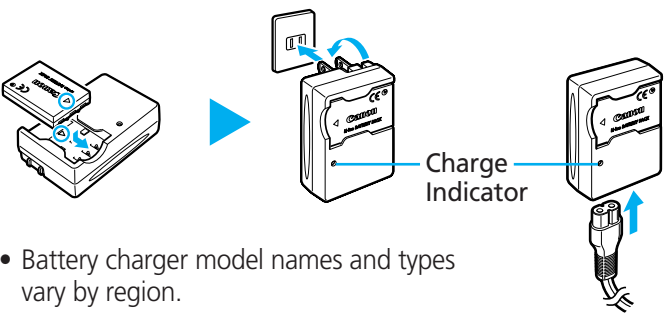
These PDF format manuals are available on the Canon website. Please download them from the following URL:  
<http://web.canon.jp/Imaging/information-e.html>

1 Preparing the Camera

Camera User Guide

A. Charge the battery pack.

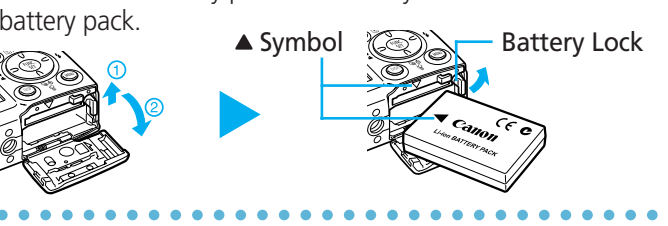
Place the battery pack in the battery charger and plug the charger into a power outlet or attach the power cord to the battery charger and plug the other end into a power outlet. The charge indicator lights red while charging and changes to green when the battery pack is charged. Charging the battery pack takes approximately 95 minutes.



• Battery charger model names and types vary by region.

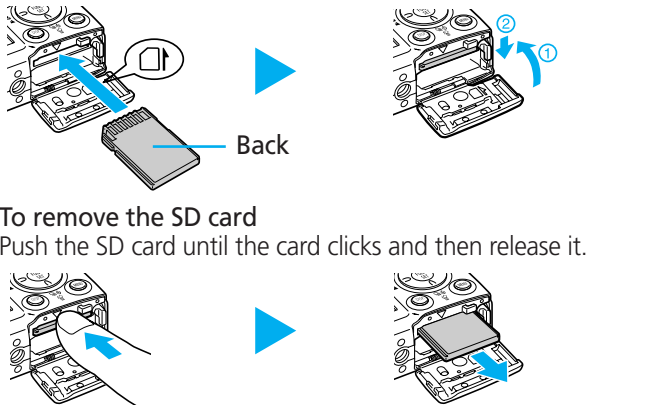
B. Install the battery pack.

Slide the SD card slot/battery cover open. Push the battery lock in the direction of the arrow and hold it while aligning the ▲ on the battery pack and battery chamber to insert the battery pack.



C. Install the SD card.

Insert the SD card all the way until it clicks. Slide the SD card slot/battery cover closed.

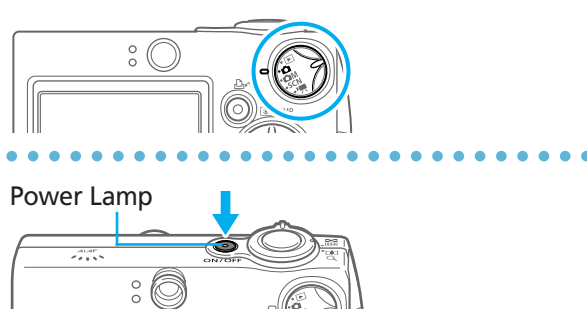


To remove the SD card  
Push the SD card until the card clicks and then release it.

2 Shooting → Camera User Guide

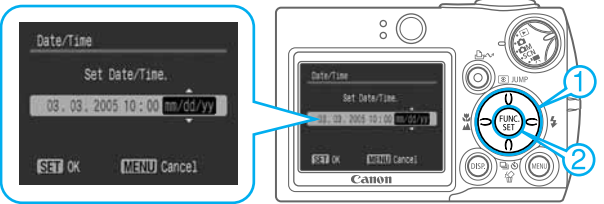
A. Turn the mode dial to (Auto).

B. Press the ON/OFF button to turn the camera on.  
Set the date and time (first time the camera is powered on).



1 Use the ◀ or ▶ button to select the items you wish to set, and the ▲ or ▼ button to change the value.

2 Check that the date and time shown are correct, then press the FUNC./SET button.

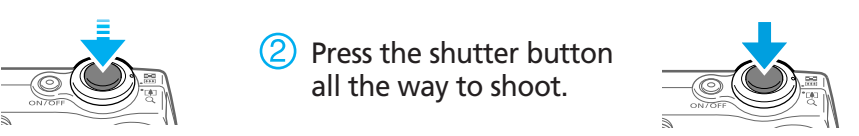


C. Aim the camera at the subject and adjust the zoom to achieve the desired composition (see "Zoom" in the "Quick Reference" section).

D. Focus and shoot.

1 Press the shutter button halfway to focus.  
• The camera focuses and beeps twice.

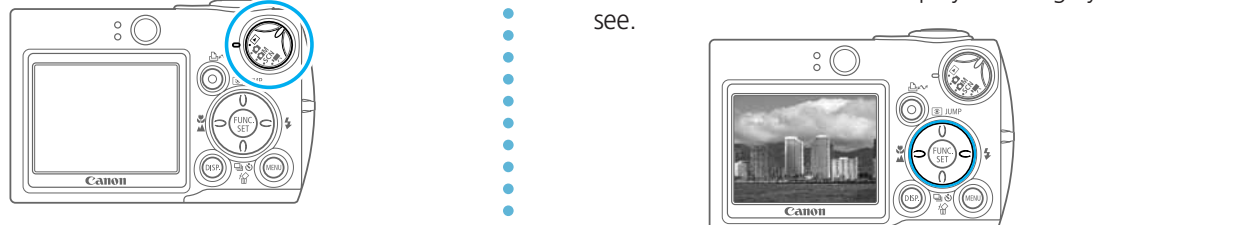
2 Press the shutter button all the way to shoot.



3 Playback → Camera User Guide

A. Turn the mode dial to (Playback).


B. Play back the images.  
Use the ◀ or ▶ button to display the image you wish to see.



4 Erasing an Image → Camera User Guide

A. In Playback mode, use the ◀ or ▶ button to select an image to erase (1) and press the button (2).

B. When the confirmation screen appears, check that [Erase] is selected and press the FUNC./SET button.  
Select [Cancel] using the ◀ or ▶ button to cancel without erasing.



Quick Reference → Camera User Guide

Shooting/Playback Modes

Shooting Modes

Auto  
Shoots with settings selected by the camera.

Manual  
You select the exposure compensation, white balance or photo effect settings. You can also access My Colors modes and Digital Macro mode.

SCN  
Special Scene  
Select from 9 scene modes to shoot with the most appropriate settings for the scene.

Movie  
For shooting movies.

Playback Mode

Playback  
View images you have taken.

Macro/Infinity Mode

Press the / button to display the or ▲ on the LCD monitor.

Displayed

Use this mode to shoot close-ups of flowers or small objects.

Recordable Area at Minimum Shooting Range <Shooting Distance>  
Max. wide angle setting: approx. 56 x 42 mm (2.2 x 1.7 in.) <From the front of lens: 5 cm (2.0 in.)>  
Max. telephoto setting: approx. 105 x 79 mm (4.1 x 3.1 in.) <From the front of lens: 30 cm (1.0 ft.)>

Displayed

Use this mode to shoot scenery or distant subjects.

Changing the Displayed Information

Press the DISP. button to switch the displayed information as follows.

Shooting Mode:  
LCD monitor - On (No Information)  
LCD monitor - On (Information View)  
LCD monitor - Off

Playback Mode:  
Standard Information View  
Detailed Information View  
No Information

Quick-bright LCD

Pressing the DISP. button for at least 1 second switches the brightness to the highest setting.\*  
\* If the monitor is already set to its maximum brightness in the Set up menu, this function is not available.

Continuous Shooting, Self-timer

Press the button to cycle through the drive modes as shown below.

Single Shot  
Continuous Shooting  
Self-timer

Zoom

The zoom can be adjusted from 37 to 111 mm (35mm film equivalent)

Wide Angle:  
Zoom out from the subject.

Telephoto:  
Zoom in on the subject.

Flash

The flash setting changes with each push of the button.  
\*The flash cannot be set in some shooting modes.

Auto  
Auto with red-eye reduction  
Flash on with red-eye reduction  
Flash on  
Flash off  
Slow Synchro

Flash range:  
50 cm – 5.0 m (1.6 – 16.4 ft.) (wide-angle)  
50 cm – 3.0 m (1.6 – 9.8 ft.) (telephoto)

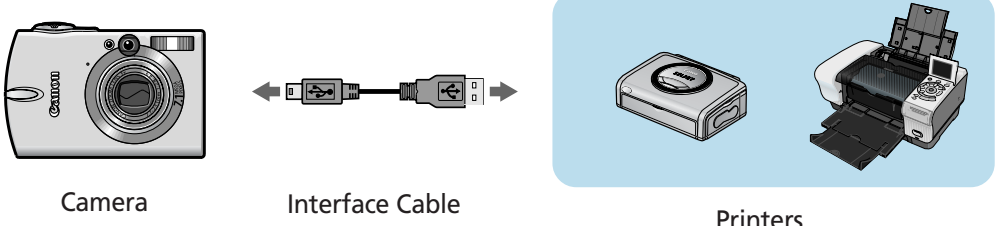
Red-eye reduction:  
This feature reduces the effect of light reflecting back from the eyes and making them appear red.

Slow Synchro:  
The flash timing is adjusted to a slow shutter speed, allowing you to shoot night scenes.


In addition, there are functions that can be set in each shooting mode. For details, see "Functions Available in Each Shooting Mode" at the end of the Camera User Guide.

5 Printing with a Direct Print Compatible Printer → Direct Print User Guide

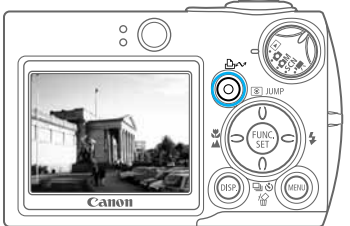
A. Connect the camera to the printer and turn on the printer's power.  
Set the camera to Playback mode and turn the power on.



B. appears\* in the upper left corner of the camera's LCD monitor, indicating that the printer is ready to print.  
\* The displayed icon may vary depending on the printer model.



C. Display an image for printing and press the button.  
The button will flash blue and the printing will start.



Please turn over



## 6 Preparing to Download Images to a Computer → Camera User Guide, Software Starter Guide

⚠ Never connect the camera to the computer before the software is installed.

### List of Things to Prepare

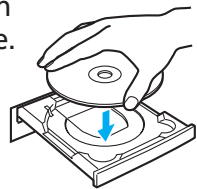
- Camera and Computer
- Canon Digital Camera Solution Disk provided with the camera
- Interface Cable (use the cable provided with the camera)

### A. Confirm that the computer meets the system requirements.

See the *Camera User Guide*.

### B. Install the software.

- a. Place the Canon Digital Camera Solution Disk into your computer's CD-ROM drive.



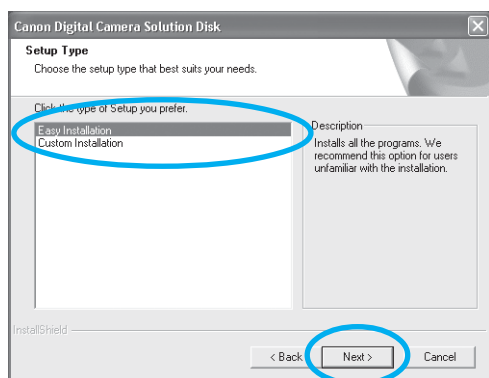
#### Macintosh

- Double-click the [Canon Digital Camera Installer] (📀) icons in the CD-ROM window.

- b. Click the Digital Camera Software [Install] button and click [Next].

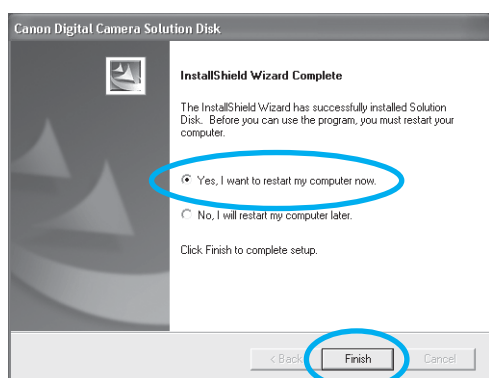


- c. Select [Easy Installation] and click [Next].



Proceed with the installation while reviewing installation settings.

- d. When the installation is complete, select [Yes, I want to restart my computer now.] as shown in the screen below, and click [Finish].



#### Macintosh

Once the installation is complete, click [Quit].

- e. Remove the disk from the CD-ROM drive after restarting.

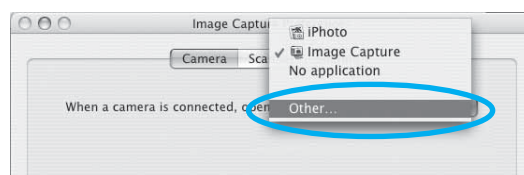
#### Macintosh

Set the ImageBrowser auto start settings before you connect the camera to the computer for the first time.

### ■ ImageBrowser Auto Start Settings

#### OS X (v10.2/v10.3)

1. Start Image Capture, click the [Image Capture] menu and select [Preferences].
2. In the next menu, click the [When a camera is connected, open:] list box and select [Other].

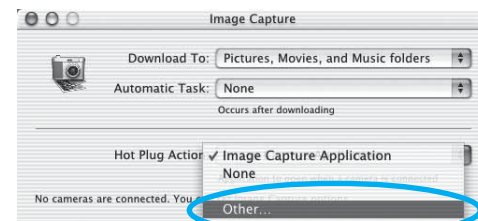


The window will appear slightly different in v10.2.

3. Select [CameraWindow] in the program selection window. CameraWindow is generally installed into the folder opened by selecting the [Applications], [Canon Utilities] and [CameraWindow] folders.
4. Click [OK] and then close Image Capture.

#### OS X (v10.1)

1. Start Image Capture and select [Other] from the [Hot Plug Action] list box.



2. Select [CameraWindow] in the program selection window.

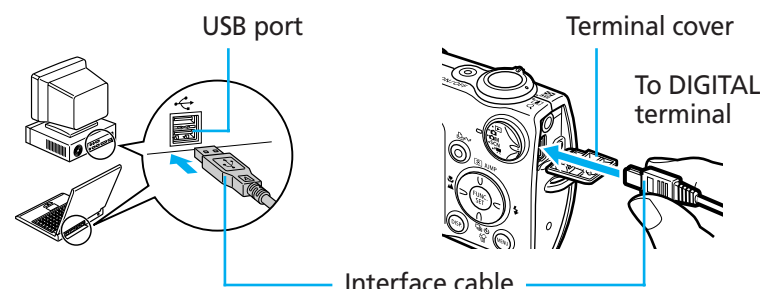
CameraWindow is generally installed into the folder opened by selecting the [Applications], [Canon Utilities] and [CameraWindow] folders.

3. Close Image Capture.

### C. Connect the camera to the computer.

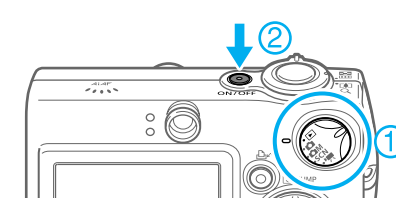
- a. Connect the supplied interface cable to the computer's USB port and the camera's DIGITAL terminal.

- Slip a fingernail under the bottom edge of the camera's DIGITAL terminal cover, lift it up and plug the interface cable in all the way.
- Treat the connector area with great care while you attach and remove the interface cable.



- b. Turn the mode dial to [Playback] (⏮) and press the ON/OFF button to turn the camera on (⏻).

The camera and computer will be ready to communicate with each other.



#### Windows

If the Digital Signature Not Found window appears, click [Yes].

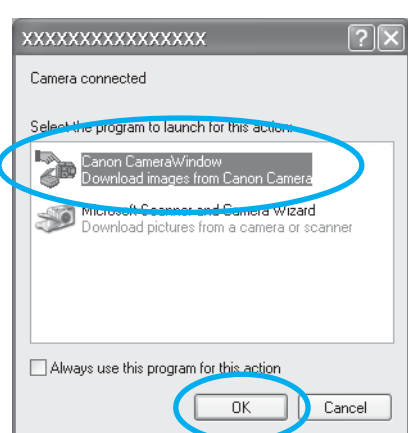
The USB driver will automatically finish installing onto the computer when you attach the camera and open a connection.

## 7 Downloading Images to a Computer Windows

→ Camera User Guide, Software Starter Guide

A dialog allowing you to set the default settings will display when you attach the camera and open a connection.

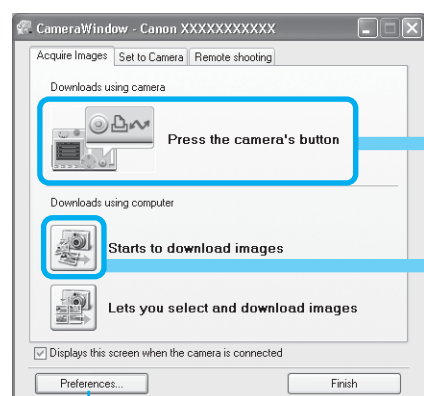
### A. Select [Canon CameraWindow] and click [OK] (first time only).



⚠ If the window shown above does not appear, click the [Start] menu, then select [Programs] or [All Programs], followed by [Canon Utilities], [CameraWindow] and [CameraWindow].

### B. Download the images.

Download the images using the camera or the computer. By default, the downloaded images are saved into the [My Pictures] folder.

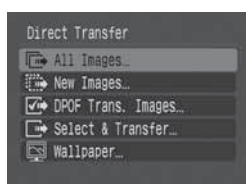


You can adjust the settings, such as the type of image downloaded and the destination folder, by clicking [Preferences].

The downloaded images will appear as thumbnails (tiny versions) in the Main Window of ZoomBrowser EX. By default, the downloaded images are saved in separate folders according to the date on which they were shot.

### Downloading Images Using Camera Operations (Direct Transfer)

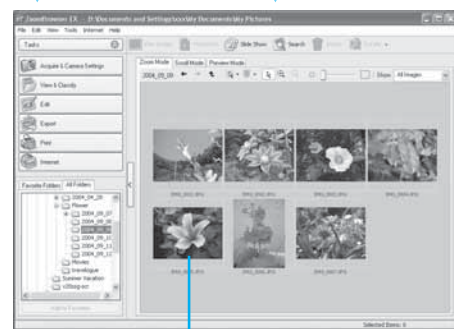
- a. Confirm that the [Direct Transfer] button lights blue.
- b. When the Direct Transfer menu appears in the camera's LCD monitor, use the [Up] or [Down] button to select [All Images] and press the [Direct Transfer] button.



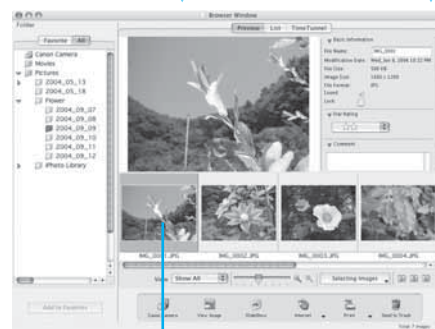
All the images on the camera's memory card will download. To selectively download images, select [Select & Transfer].

### Downloading Images Using Computer Operations

- a. Click [Starts to download images].
- By default, all the images that have yet to be downloaded will download.



Thumbnail



Thumbnail

Image download is complete.

### A. Download the images.

Download the images using the camera or the computer. By default, the downloaded images are saved into the [Pictures] folder.



You can set the type of image to download and the destination folder by clicking [Preferences].

The downloaded images will appear as thumbnails (tiny versions) in the Browser Window of ImageBrowser. By default, the downloaded images are saved in separate folders according to the date on which they were shot.

## Getting the Most out of the Software → Software Starter Guide, ZoomBrowser EX / ImageBrowser Software User Guide

### What you can do with ZoomBrowser EX (Windows) / ImageBrowser (Macintosh)

#### ■ Downloading Images to a Computer

You can easily download images saved in the camera to a computer.

#### ■ Checking Images

You can magnify images and check the information on them (the shooting date and time, the shooting settings, etc.)

#### ■ Sending Images by E-mail

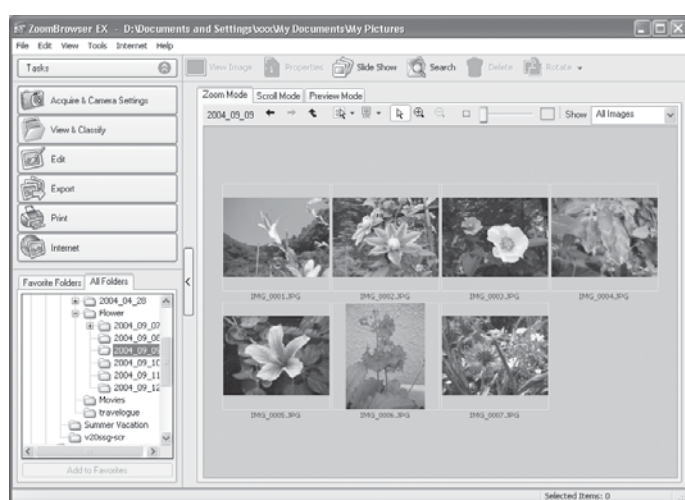
You can start your e-mail program from ZoomBrowser EX (Windows) / ImageBrowser (Macintosh) and attach images to e-mail messages that you send.

#### ■ Editing Movies

You can create and edit movies: link movies and stills that have been downloaded to your computer, add background music, superimpose titles and other text, and apply various effects to the movies.

#### ■ Using the My Camera Settings

Your favorite images and sounds can be registered as startup-up images and sounds with My Camera Settings.

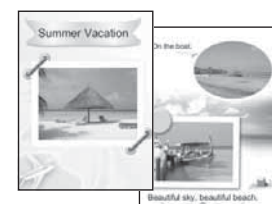


### What you can do with other software

You can use this software in even more advanced ways by linking it with other software.

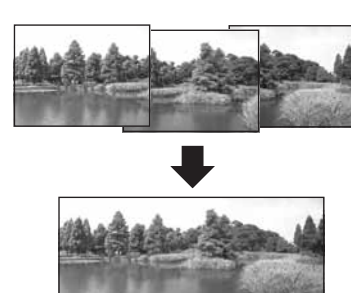
#### ■ Printing Images with Different Layouts

With PhotoRecord (Windows)/ImageBrowser (Macintosh), you can lay out images as desired and then print them.



#### ■ Stitching Panoramic Images

With PhotoStitch, you can connect or "stitch" multiple images together into a seamless panoramic view.



### A Guide to the Manuals

#### ■ Basic Methods: Software Starter Guide

The manuals in PDF format shown below are available on the Canon website. Please download them from the following URL:

- <http://web.canon.jp/Imaging/information-e.html>
- ZoomBrowser EX Software User Guide (Windows)
- ImageBrowser Software User Guide (Macintosh)

#### Viewing the PDF Manuals

The software application Adobe Reader or Adobe Acrobat Reader is required to view the PDF manuals. If one of these applications is not already installed on your computer, download it from the following website.

<http://www.adobe.com/products/acrobat/readstep2.html>