



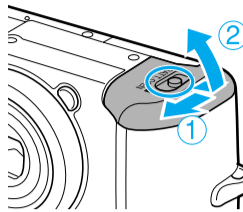
The following manuals are supplied with your camera. Please refer to them as need be.

Contents of This Guide	Reference Guides
Included accessories and separately sold equipment information.	System Map
1. Install the batteries and the memory card.	This Guide
2. Shoot images with the camera.	Quick Start Guide
3. Playback the images.	Camera User Guide
4. Erase any unwanted images.	Direct Print User Guide
Learn the names of camera components.	Supplied with a printer
5. Print the images.	Printer User Guide
6. Install the software.	<ul style="list-style-type: none"> Camera User Guide Software Starter Guide
Connect the camera to a computer.	<ul style="list-style-type: none"> Windows Macintosh
7. Download the images to a computer.	<ul style="list-style-type: none"> ZoomBrowser EX Software User Guide ImageBrowser Software User Guide
What you can do with the software	These PDF manuals are available on the Canon website. Please download them from the following URL: http://web.canon.jp/Imaging/information-e.html
The various ways of using the software	

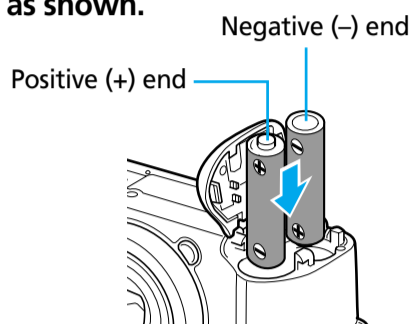
1 Preparing the Camera

→ Camera User Guide

A. Open the battery cover.



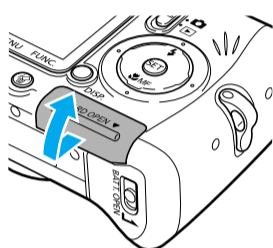
B. Insert the batteries as shown.



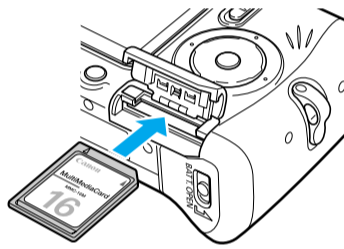
C. Close the battery cover.

D. Open the memory card slot cover.

Slide the memory card slot cover in the direction of the arrow.



E. Insert the memory card with its label facing up until it clicks.

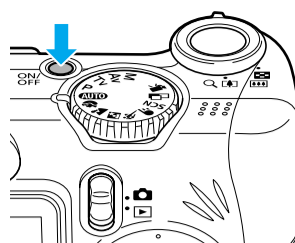


F. Close the memory card slot cover.

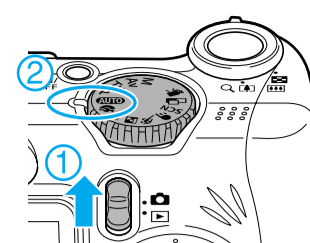
2 Shooting → Camera User Guide

A. Press the Power button to turn the power on.

The power lamp lights.

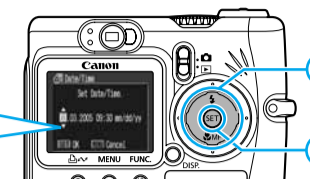
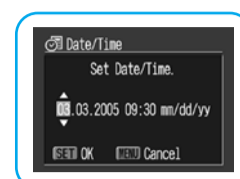


B. Slide the mode switch to (Shooting) (1) and turn the shooting mode dial to AUTO (2).



C. Set the date and time (first time the camera is powered on).

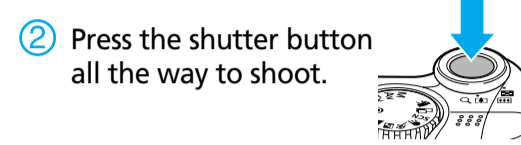
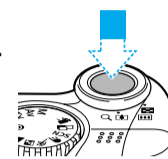
- Use the \leftarrow or \rightarrow button to select the items you wish to set, and use the \uparrow or \downarrow button to change the value.
- Check that the date and time shown are correct, then press the SET button.



D. Aim the camera at the subject and adjust the zoom to achieve the desired composition (see "Zoom" in the "Quick Reference" section).

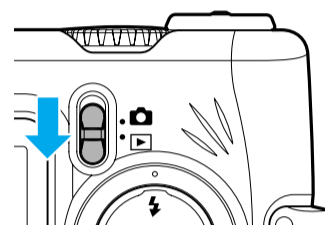
E. Focus and shoot.

- Press the shutter button halfway to focus.
 - The camera focuses and beeps twice.
- Press the shutter button all the way to shoot.



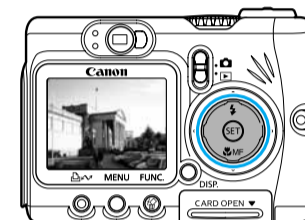
3 Playback → Camera User Guide

A. Slide the mode switch to (Playback).



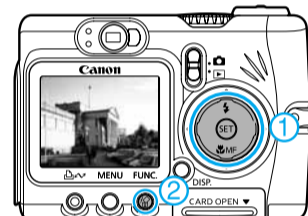
B. Play back the images.

Use the \leftarrow or \rightarrow button to display the image you wish to see.



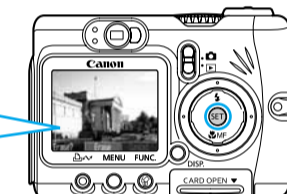
4 Erasing an Image → Camera User Guide

A. Use the \leftarrow or \rightarrow button to select the image you wish to erase (1) and press the DEL button (2).



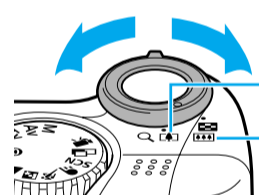
B. When the confirmation screen appears, check that [Erase] is selected and press the SET button.

Select [Cancel] using the \leftarrow or \rightarrow button to cancel without erasing.



Quick Reference → Camera User Guide

Zoom

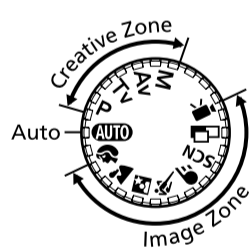


- Telephoto: Zoom in on the subject.
- Wide Angle: Zoom out from the subject.

* The zoom can be adjusted from 35 to 140 mm (35mm film equivalent)

Shooting Modes

- AUTO**: Auto
The camera automatically selects settings.
- Portrait**
The background is blurred and the subject is in clear focus.
- Landscape**
For shooting landscape scenes.
- Night Scene**
For photographing human subjects against the backdrop of an evening sky or a night scene.
- Fast Shutter**
For shooting fast moving objects.
- Slow Shutter**
For shooting moving objects to make them appear blurred, such as river rapids.
- SCN**: Special Scene
For shooting with settings appropriate for certain types of scenes. Use the \leftarrow or \rightarrow button to select a Scene mode. You can confirm the Scene mode changes in the LCD monitor.
- Stitch Assist**
Images shot in Stitch Assist mode can be merged together on a computer to make a single panoramic image.
- Movie**
For shooting movies.



Changing the Displayed Information

Press the DISP. button to switch the displayed information as follows.

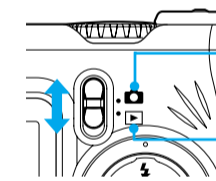
Shooting Mode:

- LCD Monitor - On (No Information)
- LCD Monitor - On (Information View)
- LCD Monitor - Off

Playback Mode:

- Standard Information View
- Detailed Information View
- No Information

Switching between Shooting/Playback



- Shooting**: Slide the mode switch to CAM .
- Playback**: Slide the mode switch to REV .

Flash

Press the FLASH button to switch between flash modes. (Some settings are not available with certain shooting modes.)

- | | |
|---|---|
| When the red-eye reduction function is on | When the red-eye reduction function is off |
| <ul style="list-style-type: none"> Auto with red-eye reduction Flash on with red-eye reduction Flash off | <ul style="list-style-type: none"> Auto Flash on Flash off |

Flash range: 45 cm – 3.5 m (1.5 – 11.5 ft.) (wide angle)/45 cm – 2.2 m (1.5 – 7.2 ft.) (telephoto)

* Red-eye reduction: This feature reduces the effect of light reflecting back from the eyes and making them appear red.

Macro

Press the MACRO button to display the MACRO on the LCD monitor. Use this mode to shoot close-ups of flowers or small objects.

* **Recordable Area at Minimum Shooting Range <Shooting Distance>**
At wide angle end: approx. 60 x 44 mm (2.4 x 1.7 in.)
<From the front of lens: 5 cm (2.0 in.)>
At telephoto end: approx. 84 x 63 mm (3.3 x 2.5 in.)
<From the front of lens: 30 cm (11.8 in.)>

In addition, there are functions that can be set in each shooting mode. For details, see "Functions Available in Each Shooting Mode" at the end of the Camera User Guide.

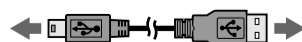
5 Printing with a Direct Print Compatible Printer → Direct Print User Guide

A. Connect the camera to the printer and turn on the printer's power.

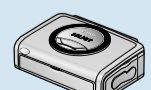
Set the camera to Playback mode and turn the power on.



Camera



Interface Cable



Printers

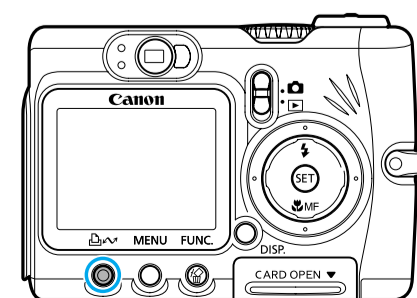
B. P , Z or I appears* in the upper left corner of the camera's LCD monitor, indicating that the printer is ready to print.

* The displayed icon may vary depending on the printer model.



C. Choose the image you wish to print and press the PRINT button.

The PRINT button will blink blue and printing of the image will start.



Please turn over

6 Preparing to Download Images to a Computer → Camera User Guide, Software Starter Guide

⚠ Never connect the camera to the computer before the software is installed.

List of Things to Prepare

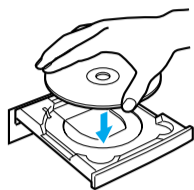
- Camera and Computer
- Canon Digital Camera Solution Disk provided with the camera
- Interface Cable (use the cable provided with the camera)

A. Confirm that the computer meets the system requirements.

See the *Camera User Guide*.

B. Install the software.

- a. Place the Canon Digital Camera Solution Disk into your computer's CD-ROM drive.



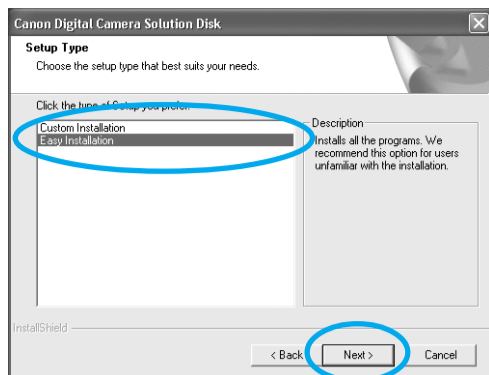
Macintosh

Double-click the [Canon Digital Camera Installer] (📀) icons in the CD-ROM window.

- b. Click the Digital Camera Software [Install] button and click [Next].

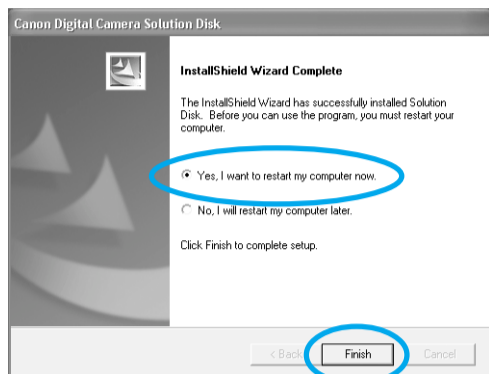


- c. Select [Easy Installation] and click [Next].



Proceed with the installation while reviewing installation settings.

- d. When the installation is complete, select [Yes, I want to restart my computer now.] as shown in the screen below, and click [Finish].



Macintosh

Once the installation is complete, click [Quit].

- e. Remove the disk from the CD-ROM drive after restarting.

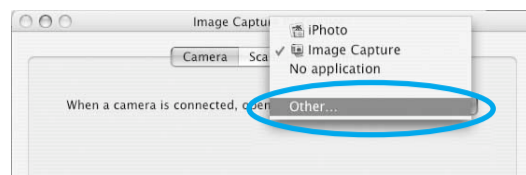
Macintosh

Set the ImageBrowser auto start settings before you connect the camera to the computer for the first time.

■ ImageBrowser Auto Start Settings

OS X (v10.2/v10.3)

1. Start Image Capture, click the [Image Capture] menu and select [Preferences].
2. In the next menu, click the [When a camera is connected, open:] list box and select [Other].

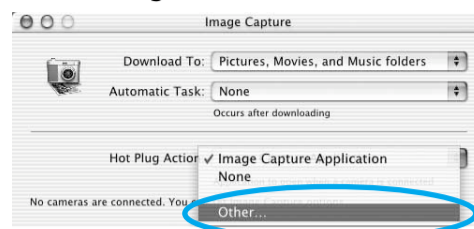


The window will appear slightly different in v10.2.

3. Select [CameraWindow] in the program selection window. CameraWindow is generally installed into the folder opened by selecting the [Applications], [Canon Utilities] and [CameraWindow] folders.
4. Click [OK] and then close Image Capture.

OS X (v10.1)

1. Start Image Capture and select [Other] from the Hot Plug Action list box.

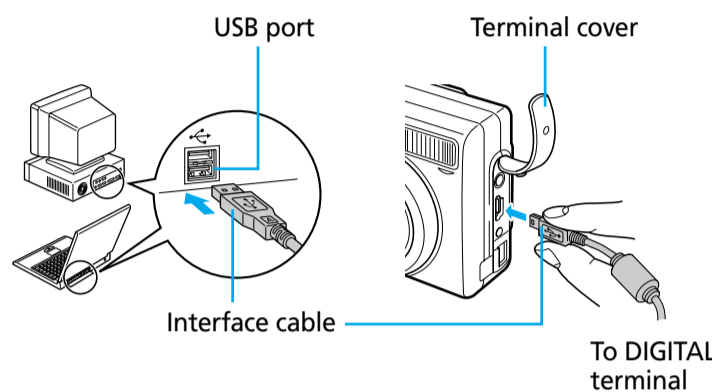


2. Select [CameraWindow] in the program selection window. CameraWindow is generally installed into the folder opened by selecting the [Applications], [Canon Utilities] and [CameraWindow] folders.
3. Close Image Capture.

C. Connect the camera to the computer.

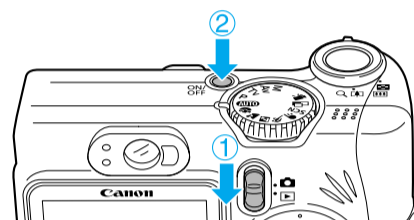
- a. Connect the supplied interface cable to the computer's USB port and the camera's DIGITAL terminal.

1. Open the terminal cover with your fingernail.
2. Securely insert the cable with the side facing the front of the camera into the DIGITAL terminal.



- b. Slide the mode switch to [] (Playback) (1) and press the Power button to turn the camera on (2).

The camera and computer will be ready to communicate with each other.



Windows

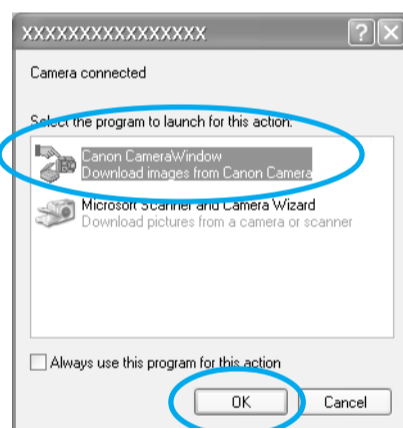
If the Digital Signature Not Found window appears, click [Yes].

The USB driver will automatically finish installing onto the computer when you attach the camera and open a connection.

7 Downloading Images to a Computer Windows → Camera User Guide, Software Starter Guide

A dialog allowing you to set the default settings will display when you attach the camera and open a connection.

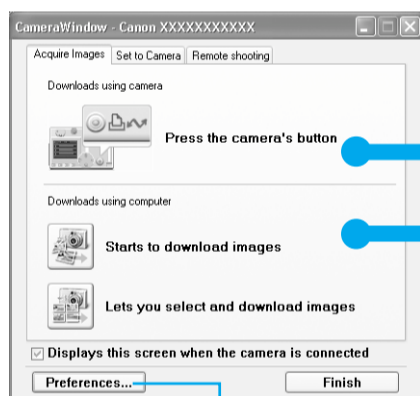
A. Select [Canon CameraWindow] and click [OK] (first time only).



⚠ If the window shown above does not appear, click the [Start] menu, then select [Programs] or [All Programs], followed by [Canon Utilities], [CameraWindow] and [CameraWindow].

B. Download the images.

Download the images using the camera or the computer. By default, the downloaded images are saved into the [My Pictures] folder.



You can adjust the settings, such as the type of image downloaded and the destination folder, by clicking [Preferences].

Downloading Images Using Computer Operations

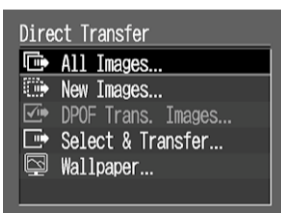
C. Click [Starts to download images].

By default, all the images that have yet to be downloaded will download.

Downloading Images Using Camera Operations (Direct Transfer)

C. Confirm that the button lights blue.

- D. When the Direct Transfer menu appears in the camera's LCD monitor, use the ↑ or ↓ button to select [All Images] and press the button.



All the images on the camera's memory card will download. To selectively download images, select [Select & Transfer].

By default, the downloaded images will appear as thumbnails (tiny versions) in the main window of ZoomBrowser EX. Downloaded images are saved in separate folders according to the date on which they were shot.

Thumbnail

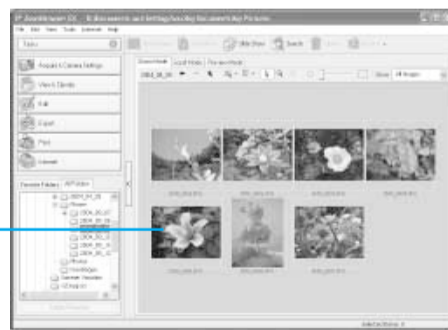


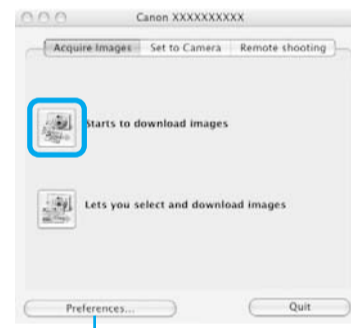
Image download is complete.

7 Downloading Images to a Computer Macintosh → Software Starter Guide

The following window will display when the camera and computer are set to the correct mode for communicating.

Double-click the [Canon CameraWindow] icon on the desktop if the window does not appear.

A. Click [Starts to download images].



You can set the type of image to download and the destination folder by clicking [Preferences].

By default, all the images that have yet to be downloaded will download to the [Pictures] folder. Also, when downloading is complete, the thumbnails (tiny versions) of the downloaded images display in ImageBrowser's Browser Window.

The downloaded images will be saved into folders according to their shooting date.



Thumbnail

Getting the Most out of the Software → Software Starter Guide, ZoomBrowser EX / ImageBrowser Software User Guide

What you can do with ZoomBrowser EX (Windows) / ImageBrowser (Macintosh)

■ Downloading Images to a Computer

You can easily download images saved in the camera to a computer.

■ Checking Images

You can magnify images and check the information on them (the shooting date and time, the shooting settings, etc.)

■ Sending Images by E-mail

You can start your e-mail program from ZoomBrowser EX (Windows) / ImageBrowser (Macintosh) and attach images to e-mail messages that you send.

■ Shooting with a Computer

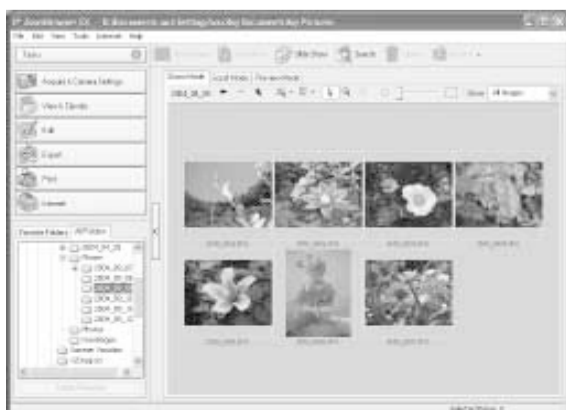
You can operate the camera's shutter and shoot images from a computer.

■ Editing Movies

You can create and edit movies: link movies and stills that have been downloaded to your computer, add background music, superimpose titles and other text, and apply various effects to the movies.

■ Using the My Camera Settings

Your favorite images and sounds can be registered as start-up images and sounds with My Camera Settings.

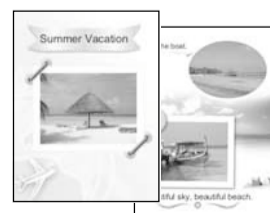


What you can do with other software

You can use this software in even more advanced ways by linking it with other software.

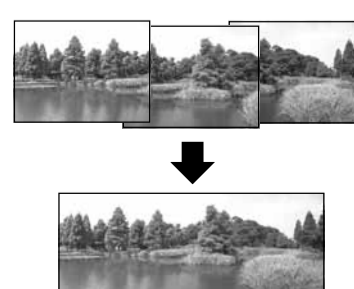
■ Printing Images with Different Layouts

With PhotoRecord (Windows)/ ImageBrowser (Macintosh), you can lay out images as desired and then print them.



■ Stitching Panoramic Images

With PhotoStitch, you can connect or "stitch" multiple images together into a seamless panoramic view.



A Guide to the Manuals

■ Basic Method: Software Starter Guide

■ Advanced Method: PDF Manuals

The PDF manuals shown below are available on the Canon website. Please download them from the following URL:

<http://web.canon.jp/Imaging/information-e.html>

- ZoomBrowser EX Software User Guide (Windows)
- ImageBrowser Software User Guide (Macintosh)

Viewing the PDF Manuals

The software application Adobe Reader or Adobe Acrobat Reader is required to view the PDF manuals. If one of these applications is not already installed on your computer, download it from the following website.

<http://www.adobe.com/products/acrobat/readstep2.html>