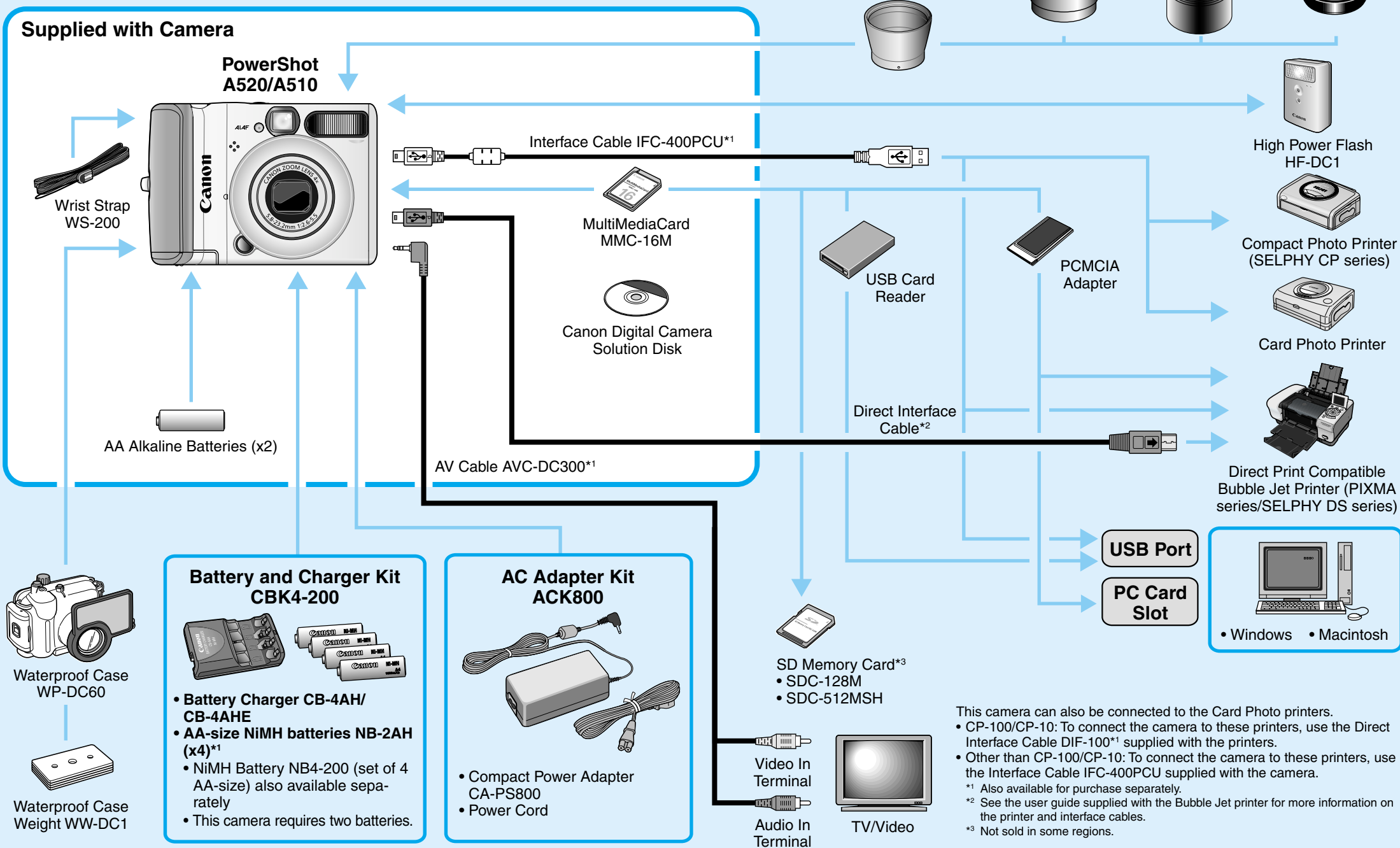


# PowerShot A520/A510 SYSTEM MAP

DIGITAL CAMERA

Canon



## Confirming the Package Contents

The camera package should contain the following items. Contact your camera retailer if any are missing.

- Digital Camera
- Wrist Strap WS-200
- AA Alkaline Batteries (x2)
- MultiMediaCard MMC-16M
- Interface Cable IFC-400PCU
- AV Cable AVC-DC300
- Canon Digital Camera Solution Disk
- Quick Start Guide
- Camera User Guide
- Direct Print User Guide
- Software Starter Guide
- System Map (this sheet)
- Warranty Card
- “For Windows® XP and Mac OS X Users” Leaflet
- “Canon Customer Support” Leaflet

## Optional Accessories

The following camera accessories are sold separately. **Some accessories are not sold in some regions.**

### Lenses, Lens Adapter

- **Conversion Lens Adapter LA-DC52F**  
This adapter is required for mounting the wide converter, tele-converter and close-up lens to the camera.
- **Wide Converter WC-DC52**  
Converts the focal distance of the body lens by a factor of approximately 0.7 (35mm film equivalent at maximum wide angle: approximately 24.5 mm) when attached.
- **Tele-converter TC-DC52A**  
Converts the focal distance of the body lens by a factor of approximately 1.75 (35mm film equivalent at maximum telephoto: approximately 245 mm) when attached.
- **Close-up Lens 250D (52mm)**  
A lens for shooting at higher magnifications when the camera's macro mode is used.

### Flash

- **High Power Flash HF-DC1**  
This attachable supplementary flash can be used to capture the photographic subjects that are too distant for the built-in flash to illuminate.

### Power Supplies

- **AC Adapter Kit ACK800**  
This kit lets you power the camera from any standard household power outlet. Recommended to power a camera for an extended period of time or when connecting to a computer.
- **Battery and Charger Kit CBK4-200**  
This dedicated battery charger kit includes both a charger unit and four rechargeable AA-size NiMH (nickel metal hydride) batteries. Convenient when taking or playing back large numbers of images.
- **NiMH Battery NB4-200**  
A set of four rechargeable AA-size NiMH batteries.  
(This camera requires two batteries.)

### Connection Accessories

These connection accessories can be used with computers equipped with the following OS.

**Windows:** Systems running preinstalled Windows 98 Second Edition (SE), Windows Me, Windows 2000 Service Pack 4, Windows XP (including Service Pack 1 and Service Pack 2)

**Macintosh:** Mac OS X (v10.1.5 – v10.3)\*  
\* Only systems equipped with genuine built-in USB interfaces.

- **Interface Cable IFC-400PCU**

Use this cable to connect the camera to a computer, Compact Photo Printer (SELPHY series), Card Photo Printer (other than CP-100/CP-10), or to a Bubble Jet printer (refer to your Bubble Jet printer user guide).

### Other Accessories

- **SD Memory Cards**  
SD memory cards are used to store images recorded by the camera. Canon brand cards are available in 128 MB and 512 MB capacities.
- **AV Cable AVC-DC300**  
Use this cable to connect the camera to a TV set.
- **Waterproof Case WP-DC60**  
A waterproof case for the PowerShot A520/A510. You can use this case to take underwater shots at depths of up to 40 meters (130 feet). And of course it's also ideal for taking worry-free pictures in the rain, at the beach, or on the ski slopes.

## Direct Print Compatible Printers

Canon offers the following separately sold printers for use with the camera. You can produce prints quickly and easily by connecting them to the camera with a single cable and operating the camera's controls.

- **Compact Photo Printers (SELPHY series)**
- **Card Photo Printers**
- **Bubble Jet Printers**

For more information, visit your nearest Canon retailer.