



Wireless File Transmitter

WFT-E1A



INSTRUCTION MANUAL

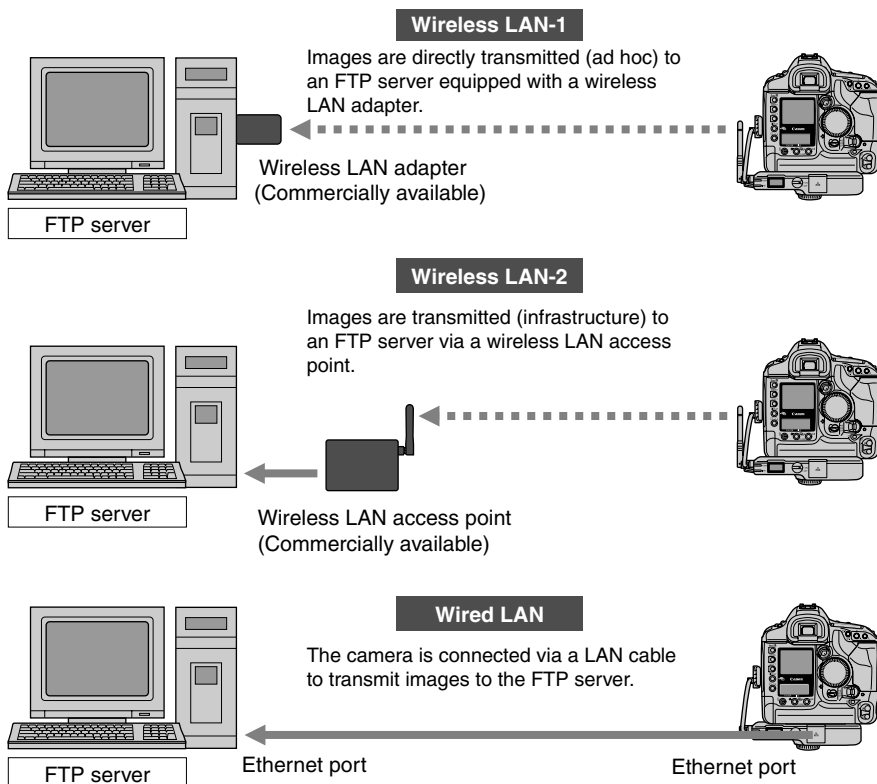
Thank you for purchasing a Canon product.

Wireless File Transmitter WFT-E1A enables your EOS digital camera to send captured images to an FTP server via a wireless or wired LAN.

It works with IEEE 802.11b and IEEE 802.11g wireless LANs and 100 Base-TX Ethernet wired LANs.

EOS digital cameras compatible with the WFT-E1A are listed on Canon's Web site. Or you can inquire at a Canon Service Center.

Image Transfer Overview



Item Check List

Check that all the following items have been included with the WFT-E1A. If anything is missing, contact your dealer.

☐ **Wireless File Transmitter WFT-E1A**

☐ **Normal Antenna NA-E1**

☐ **Interface Cable IFC-15D4**

Cable approx. 15 cm/0.5 ft long to connect to the <DIGITAL> (IEEE 1394) port. Used when the WFT-E1A is attached to the camera's tripod socket.

☐ **Interface Cable IFC-150D4**

Cable approx. 1.5 m/4.9 ft long to connect to the <DIGITAL> (IEEE 1394) port. Used when the WFT-E1A is placed some distance away from the camera.

☐ **Interface Cable IFC-30U**

Cable approx. 30 cm/1 ft long to connect to the <DIGITAL> (USB) port.

☐ **Protective caps for cable**

Two types are provided for the WFT-E1A and camera (EOS-1D series).

☐ **Tripod socket (with anti-rotation rubber pad)**

Used when the WFT-E1A is attached to the camera's tripod socket.

To prevent rotational slippage, a rubber pad is inserted between the WFT-E1A and camera.

☐ **Case**

Case for the WFT-E1A. Can be mounted on a belt. Strap also provided.

☐ **WFT-E1/WFT-E1A Utility Disk**

Contains the instruction manual (what you are reading now) and software for creating the settings file.

☐ **Warranty card**

* Battery Pack and Battery Charger are not included. If necessary, purchase them separately (p.22).

* Be careful not to lose any of the items included with the WFT-E1A.

- Canon and EOS are trademarks of Canon Inc.
- Windows is a trademark or registered trademark of Microsoft Corporation in the United States and other countries.
- Macintosh is a registered trademark of Apple Corporation in the United States and other countries.
- WPA is a registered trademark of Wi-Fi Alliance.
- All other corporate names and trademarks mentioned in this manual are the property of their respective owners.

Conventions Used in this Manual

- The instructions in this manual assume that the proper settings for the wireless LAN or wired LAN and FTP server have been completed. For details on how to set these settings, consult the manufacturer of the respective equipment.
- The menu screens are based on the EOS-1Ds Mark II's.
- Terms in brackets [] indicate the button name, icon name, camera menu item, etc.
- The number in parentheses indicate the number of the page where you can find more information.
- This manual assumes that you have read the camera's instruction manual and are familiar with camera operation procedures.
- This manual uses the following alert symbols:



: The Caution symbol indicates a warning to prevent mishaps.



: The Note symbol gives supplemental information.

- In this manual, "Windows XP" refers to Windows XP Home Edition/Professional, and "Windows 2000" refers to Windows 2000 Professional.

Using the WFT-E1A for image transmissions requires adequate knowledge of your wireless LAN, wired LAN, and FTP server settings.

Canon does not provide support for setting up any wireless LANs, wired LANs, and FTP servers. Note that Canon cannot be held liable for any loss or damage of the network and FTP server caused by any mistaken settings. Canon also cannot be held liable for any loss or damage caused by the use of the WFT-E1A.

Contents

Introduction	
Item Check List	3
Conventions Used in this Manual	4
Safety Warnings	7
Handling Precautions	8
1 Creating the Settings File	9
Startup the Software	10
TCP/IP Settings	11
FTP Settings	12
Wireless LAN Settings	15
Saving the Settings to the Memory Card	17
Registering the Settings in the Software	18
2 Setting Up the WFT-E1A	19
Nomenclature	20
Installing and Removing the Battery	22
Using a Household Power Outlet	24
Attaching the Antenna	25
Attaching to the Camera	26
Setting the LAN	27
Selecting the LAN Type	29
Checking the Connection Status	30
Power Management	32
3 Transferring Images	33
Automatic Image Transfer After Each Shot	34
Image Batch Transfer After Shooting	36
Transferring RAW+JPEG Images	40
4 Changing the LAN Settings with the Camera	41
Setting TCP/IP	42
Setting the DNS Server	43
Setting the FTP Server	44
Setting Wireless LAN	47
Protecting and Saving the Settings	48
5 Reference	49
Troubleshooting Guide	50
Error Number Description	52
Specifications	53
Index	56

Model DS508152

For use of original antenna (NA-E1)

For body worn operation, this Model DS508152 has been tested and meets the FCC RF exposure guidelines when used with the Canon accessories supplied or designated for this product. Use of other accessories may not ensure compliance with FCC RF exposure guidelines.

For use of option antenna (ERA-E1)

This equipment complies with FCC radiation exposure limits set forth for uncontrolled equipment and meets the FCC radio frequency (RF) Exposure Guidelines in Supplement C to OET65. This equipment should be installed and operated with at least 20cm and more between the radiator and person's body (excluding extremities: hands, wrists, feet and legs).

This device complies with Part 15 of the FCC Rules. Operation is subject to the following two conditions: (1) This device may not cause harmful interference, and (2) this device must accept any interference received, including interference that may cause undesired operation.



Note: This equipment has been tested and found to comply with the limits for class B digital devices, pursuant to Part 15 of the FCC Rules. These limits are designed to provide reasonable protection against harmful interference in a residential installation. This equipment generates, uses and can radiate radio frequency energy and, if not installed and used in accordance with the instructions, may cause harmful interference to radio communications. However, there is no guarantee that interference will not occur in a particular installation. If this equipment does cause harmful interference to radio or television reception, which can be determined by turning the equipment off and on, the user is encouraged to try to correct the interference by one or more of the following measures:

- Reorient or relocate the receiving antenna.
- Increase the separation between the equipment and receiver.
- Connect the equipment into an outlet on a circuit different from that to which the receiver is connected.
- Consult the dealer or an experienced radio/TV technician for help.

The cable with the ferrite core provided with the digital camera must be used with this equipment in order to comply with Class B limits in Subpart B of Part 15 of the FCC rules.

Do not make any changes or modifications to the equipment unless otherwise specified in the manual. If such changes or modifications should be made, you could be required to stop operation of the equipment.

This transmitter must not be co-located or operating in conjunction with any other antenna or transmitter.

Canon U.S.A. Inc.
One Canon Plaza, Lake Success, NY 11042, U.S.A.
Tel No. (516)328-5600

This Class B digital apparatus complies with Canadian ICES-003.

Cet appareil numérique de la classe B est conforme à la norme NMB-003 du Canada.

Safety Warnings

Follow these safeguards and use the equipment properly to prevent injury, death, and material damage.

Preventing Serious Injury or Death

- To prevent fire, excessive heat, chemical leakage, and explosions, follow the safeguards below:
 - Do not use any batteries, power sources, and accessories not specified in this booklet. Do not use any home-made or modified batteries.
 - Do not short-circuit, disassemble, or modify the battery pack. Do not apply heat or apply solder to the battery pack or back-up battery. Do not expose the battery pack or back-up battery to fire or water. And do not subject the battery pack or back-up battery to strong physical shock.
 - Do not install the battery pack in reversed polarity (+ -).
 - Do not recharge the battery pack outside the allowable ambient temperature range of 0°C - 40°C (32°F - 104°F). Also, do not exceed the recharging time.
 - Do not insert any foreign metallic objects into the electrical contacts of the WFT-E1A, accessories, connecting cables, etc.
- When disposing of a battery pack, insulate the electrical contacts with tape to prevent contact with other metallic objects or batteries. This is to prevent fire or an explosion.
- If excessive heat, smoke, or fumes are emitted during battery pack recharging, immediately unplug the battery charger from the power outlet to stop the recharging and prevent a fire.
- If the battery pack or back-up battery leaks, changes color, deforms, or emits smoke or fumes, remove it immediately. Be careful not to get burned in the process.
- Prevent any battery leakage from contacting your eyes, skin, and clothing. It can cause blindness or skin problems. If the battery leakage contacts your eyes, skin, or clothing, flush the affected area with lots of clean water without rubbing it. See a physician immediately.
- When recharging the battery pack, keep the equipment away from the reach of children. The cord can accidentally choke the child or give an electrical shock.
- Do not leave any cords near a heat source. It can deform the cord or melt the insulation and cause a fire or electrical shock.
- When the WFT-E1A is not in use, disconnect the power plug and remove the battery pack. This is to prevent electrical shock, heat generation, and fire.
- Do not use the equipment where there is flammable gas. This is to prevent an explosion or fire.
- If you drop the equipment and the casing breaks open to expose the internal parts, do not touch the internal parts due to the possibility of electrical shock.
- Do not disassemble or modify the equipment. High-voltage internal parts can cause electrical shock.
- Do not store the equipment in dusty or humid places. This is to prevent fire and electrical shock.
- Before using the camera inside an airplane or hospital, check if it is allowed. Electromagnetic waves emitted by the camera may interfere with the plane's instruments or the hospital's medical equipment.
- To prevent fire and electrical shock, follow the safeguards below:
 - Always insert the power plug all the way in.
 - Do not handle a power plug with wet hands.
 - When unplugging a power plug, grasp and pull the plug instead of the cord.
 - Do not scratch, cut, or excessively bend the cord or put a heavy object on the cord. Also do not twist or tie the cords.
 - Do not connect too many power plugs to the same power outlet.
 - Do not use a cord whose insulation has been damaged.
- Occasionally unplug the power plug and use a dry cloth to clean off the dust around the power outlet. If the surrounding is dusty, humid, or oily, the dust on the power outlet may become moist and short-circuit the outlet to cause a fire.
- Be careful not to poke the tip of the antenna into someone's eyes. It can cause visual impairment.

Preventing Injury or Equipment Damage

- Do not leave equipment inside a car under the hot sun or near a heat source. The equipment may become hot and cause skin burns.
- Do not cover or wrap the battery-recharging apparatus with a cloth. Doing so may trap heat within and cause the casing to deform or catch fire.
- If you drop the camera in water or if water or metal fragments enter inside the camera, promptly remove the battery pack and back-up battery. This is to prevent fire and electrical shock.
- Do not use or leave the battery pack in a hot environment. Doing so may cause battery leakage or a shorter battery life. The battery pack can also become hot and cause skin burns.
- Do not use paint thinner, benzene, or other organic solvents to clean the equipment. Doing so may cause fire or a health hazard.

If the product does not work properly, requires repair, or is damaged, contact your dealer or your nearest Canon Service Center.

Handling Precautions

Product Care and Storage

- The WFT-E1A is a precision instrument. Do not drop it or subject it to physical shock.
- The WFT-E1A is not waterproof and cannot be used underwater. If it gets wet, detach the battery and promptly consult your nearest Canon Service Center. Wipe off any water droplets with a clean, dry cloth. If the WFT-E1A has been exposed to salty air, wipe with a well-wrung wet cloth.
- Never leave the WFT-E1A near anything having a strong magnetic field such as a magnet or electric motor.
- Do not leave the WFT-E1A in excessive heat such as in a car in direct sunlight. High temperatures can cause the WFT-E1A to malfunction.
- Do not use cleaners that contain organic solvents to clean the WFT-E1A. For stubborn dirt, take the WFT-E1A to a Canon Service Center.
- If the WFT-E1A will not be used for an extended period, remove the battery and store the WFT-E1A in a cool, dry, well-ventilated location.
- Avoid storing the WFT-E1A where there are corrosive chemicals such as a darkroom or chemical lab.

LCD Panel Care

At low temperatures, the liquid-crystal display response may become slower. And at high temperatures, the display may blacken. In either case, the display will return to normal at room temperature.

Operation Restrictions

- Use the WFT-E1A only with a compatible EOS digital camera. Using it with an incompatible product may result in malfunction, accident, etc., not covered by the product warranty.
- Use the WFT-E1A only for image transfers via wireless LAN or wired LAN devices. If you use the WFT-E1A for any other purpose, Canon cannot be held liable for any damage or injury that may occur.
- The WFT-E1A can only be used in the following areas: Japan, USA, Canada, France, Italy, Germany, Great Britain, Belgium, the Netherlands, Luxembourg, Ireland, Denmark, Greece, Spain, Portugal, Austria, Finland, Sweden, Poland, Hungary, Czech, Slovakia, Slovenia, Estonia, Latvia, Lithuania, Cyprus, Malta, Iceland, Norway, Switzerland, Australia, New Zealand, China, Singapore, and Taiwan.
For other countries, inquire through Canon's Customer Service Center.
- In France, using the WFT-E1A outdoors is prohibited.
- In Italy, if used outside of own premises, general authorization is required.
- In Latvia, if used outside of own premises, individual radio licenses is required.
- This device may experience signal interference caused by other devices emitting radio waves (microwave ovens, Bluetooth appliances, etc.). Keep the device away from such devices or do not use the devices at the same time.
- The performance of this transmitter is guaranteed only when used with the Canon antenna (NA-E1 or ERA-E1)

1

Creating the Settings File

First you must create the settings file to enable image transfers from the WFT-E1A to the FTP server or wireless LAN access point (or wireless LAN adapter).

Then you load the settings file in the camera with a memory card. Although this chapter uses Windows XP screenshots, the procedure is the same for Windows 2000 and Mac OS X.

Connection function to the FTP server

If the personal computer used for creating the setting file is in the network environment that is connectable to the FTP server for transferring images via a wireless or wired LAN, you can do a simple connection check using the personal computer, instead of the WFT-E1A.

You can also [**Browse**] the folders and [**Search**] the SSID.

However, note that depending on the OS used or the wireless LAN network environment, these functions may not be usable.

Startup the Software

Double-click WFT_E1A Utility.exe to startup the software. When starting up the software for the first time, [WFT-E1A Settings Wizard] will start up. From the second time, [WFT-E1A Utility] will start up.

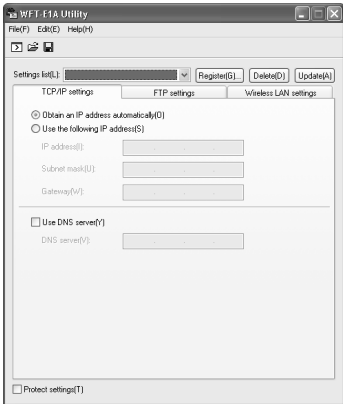
WFT-E1A Settings Wizard

Follow the on-screen setup instructions. Click on the [Next] button to create the communications setting file. You can also do a simple connection check.
The WFT-E1A Settings Wizard can also be started up with the WFT-E1A Utility's [File] → [New Settings Wizard].

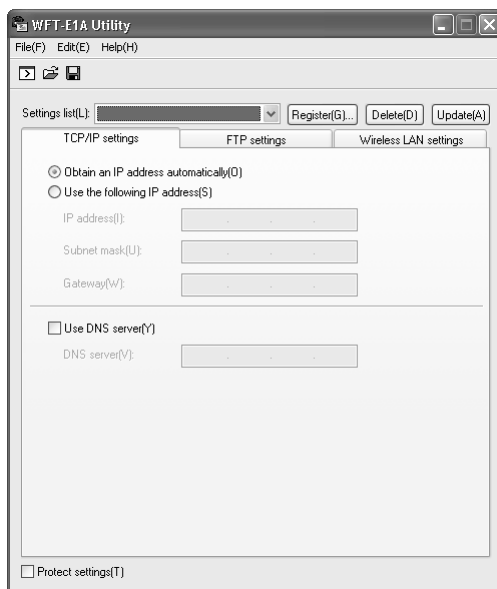


WFT-E1A Utility

This is for creating the communications setup file and saving it to the memory card as well as saving the file for each communications setting. The procedure to create the communications setup file with the WFT-E1A Utility is explained in the following.



TCP/IP Settings



IP Address Setting

☐ Obtain an IP address automatically]

If the IP address is to be obtained automatically by using the DHCP server of the wireless LAN access point, select ☐ **Obtain an IP address automatically**].

☐ Use the following IP address]

If the DHCP server is not to be used, select ☐ **Use the following IP address**]. Then enter the necessary information in the **[IP address]**, **[Subnet mask]**, and **[Gateway]** text boxes.

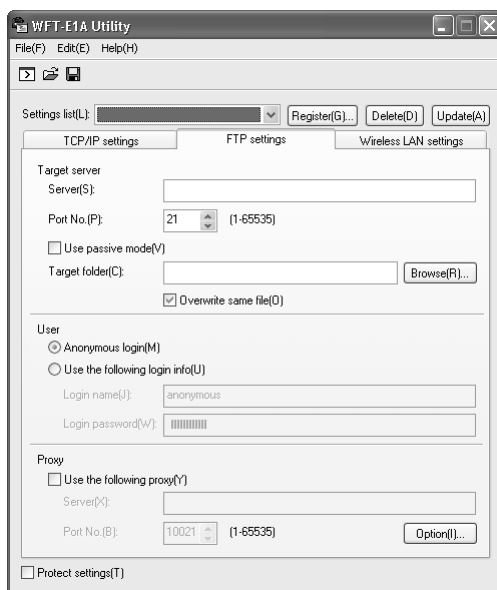
DNS Server Setting

☐ Use DNS server]

If a DNS server is to be used, checkmark the ☐ **Use DNS server**] box and enter the DNS server's IP address.

If the ☐ **Obtain an IP address automatically**] box is checkmarked, the DNS server address acquired automatically from the DHCP server will override any other address.

FTP Settings



Target Server Settings

[Server]

For [Server], enter the FTP server name or IP address.

[Port No.]

Normally, enter 21.

☐ Use passive mode

If the passive mode is to be used, checkmark the ☐ Use passive mode box.

[Target folder]

Enter the path (ASCII characters) to the transfer target folder (root folder) specified with the FTP server.

If a save target folder as specified by the path already exists, the images will be saved in the folder. If there is no save target folder for the specified path, a folder will be created automatically.

Even if a save target folder is not created, images will be saved to the transfer target folder specified by the FTP server.

**About the image transfer target folder**

The transferred images will be saved in the target transfer folder specified by the FTP server in the following folder hierarchy: A/DCIM/100EOS1D

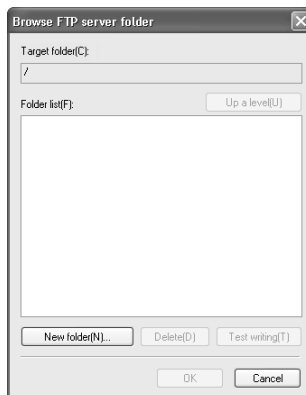
If the camera has two memory card slots and the CF card is selected to save the images, the A/DCIM/100EOS1D folder hierarchy will be created automatically to save the images. If the SD card is selected to save the images, the B/DCIM/100EOS1D folder hierarchy will be created automatically to save the images. (CF card images will be in folder A, while SD card images will be in folder B.)

[Browse] button

When you click the **[Browse]** button on the **[FTP settings]** screen, the **[Browse FTP server folder]** screen appears and the folder inside the transfer target folder (root folder) specified by the FTP server is displayed.

If the save target folder has already been set, that folder will be selected. When you click on the **[New folder]** button, the save target folder's create screen will appear. When you click on the **[Delete]** button, the selected folder will be deleted only if it is empty. Use the **[Test writing]** button to check if the folder is writable. When you click this button, a writing test is performed for the selected folder and the result is displayed. The file used for the writing test is deleted automatically.

When you click the **[Up a level]** button, the folder one level above the current folder (below the transfer target folder or root folder) in the folder tree will be displayed. There is no folder that can be displayed above the transfer target folder or root folder.



[☐ Overwrite same file]

To allow an image file in the target folder to be overwritten by a file having the same name, checkmark the [☐ **Overwrite same file**] box (p.39).

User Settings

[☐ Anonymous login]

Use this if the FTP server allows anonymous logins. When [☐ **Anonymous login**] is selected, FTP server login will be possible with the username “anonymous” and password “wft-e1@canon”.

If the FTP server is run by Mac OS X, anonymous login will not be possible.

[☐ Use the following login info]

Enter the [**Login name**] and [**Login password**] required by the FTP server.

Proxy Settings

When using a proxy server, checkmark the [☐ **Use the following proxy**] box, and set the [**Server**] and [**Port No.**].

[Server]

Enter the proxy server's server name or IP address.

[Port No.]

Enter the proxy server's port number.

[Option] button

This is for selecting which proxy setting to use when the save target folder's [**Browse**] button or WFT-E1A settings wizard's [**Test connection**] button has been clicked.

[☐ Use camera proxy settings to test connection(C)]

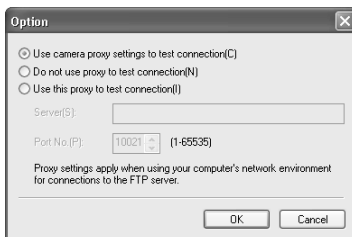
The connection will be confirmed for the proxy server actually set for the camera.

[☐ Do not use proxy to test connection]

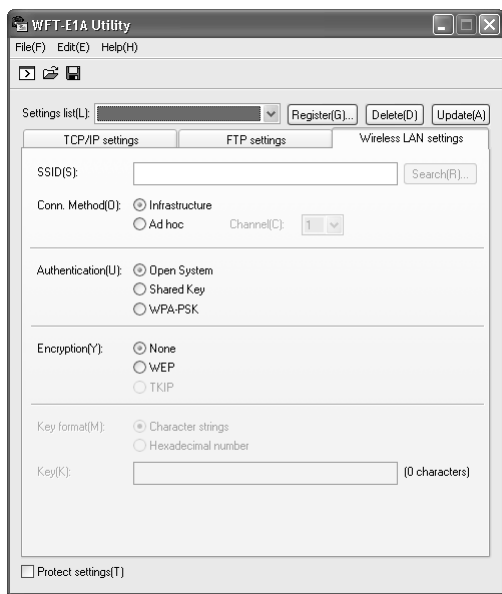
Set this if the network environment does not use a proxy server.

[☐ Use this proxy to test connection]

The connection will be confirmed for the proxy server whose [**Server**] and [**Port No.**] were set on this screen.



Wireless LAN Settings



Basic Settings

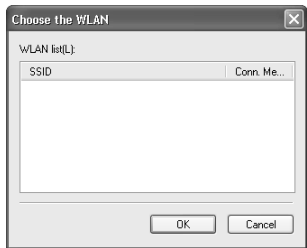
[SSID]

Enter the SSID (or ESS-ID) that has been set for the wireless LAN access point or wireless LAN adapter. If the wireless LAN access point is set to ANY connection, set the SSID for the wireless LAN access point.

[Search] button

If your personal computer is connected to a wireless LAN access point or a wireless LAN adapter, clicking on the **[Search]** button will search for a nearby wireless LAN terminal by using the personal computer's wireless LAN environment, and the terminal's SSID will be displayed.

When the displayed SSID is selected, the SSID connection method and channel setting are done automatically so that a connection to the wireless LAN terminal can be made.



[Conn. Method]

Select either [☐ Infrastructure] or [☐ Ad hoc] for the connection.
If you will use IEEE 802.11g, select [☐ Infrastructure]. [☐ Ad hoc] only supports communications via IEEE 802.11b.

[Channel]

With [☐ Infrastructure], the channel is set automatically.
With [☐ Ad hoc], the same channel as for the wireless LAN adapter will be set.

Authentication and Encryption

Set the [Authentication], [Encryption], [Key format], and [Key] to the same settings as for the wireless LAN access point or wireless LAN adapter.
The possible settings will vary depending on the combination as shown below.

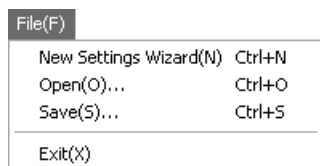
Conn. Method	Authentication	Encryption	
		Encryption Method	Key Format
Infrastructure	Open System	WEP	<ul style="list-style-type: none">• Enter 10 hexadecimal char.• Enter 26 hexadecimal char.• Enter 5 ASCII characters• Enter 13 ASCII characters
		None	
	Shared key	WEP	See WEP settings above.
	WPA-PSK	TKIP	<ul style="list-style-type: none">• Enter 64 hexadecimal char.• Enter 8-63 ASCII characters
Ad hoc		WEP	See WEP settings above.
		TKIP	See TKIP settings above.
		None	

Settings Protect

To prevent the camera from changing the LAN settings, put a checkmark in the “Protect Settings” option in the lower left corner of the window.
You can also enable/disable the [☐ Protect settings] with the camera’s menu screen (p.48).

Saving the Settings to the Memory Card ■

You must now save the settings file to a memory card. Have a memory card on hand to save data.



1

Select [File] → [Save].

→ The Save dialog box will appear.

2

Click the [Save] button.

- Select the drive where the memory card is inserted, then open the memory card (in the root directory) and save the file to the memory card.
- The [**nprofile.nif**] file name cannot be changed.
- To load the settings file into the camera, see page 27.



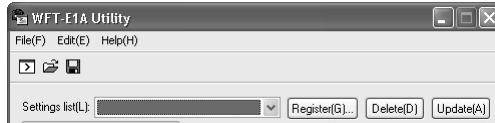
Save the settings file to the root directory of the memory card. If the settings file is nested inside another folder, the camera will not be able to read it.



By selecting [**File**] → [**Open**], the communications setting file saved in the memory card or hard disk can be read.

Registering the Settings in the Software

You can name the settings and save up to 20 settings for WFT-E1A Utility. The settings can also be registered according to the operating environment such as infrastructure and ad hoc.

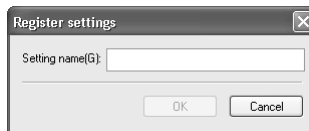


[Settings list]

When you click on the **[Settings list]** field, the registered settings will appear in a pulldown menu. The selected item will be read by WFT-E1A Utility.

[Register] button

Click this button to display the setting's register screen. Enter the name to be registered (up to 20 characters) and click **[OK]**. The setting will be registered in **[Settings list]**.



[Delete] button

This deletes the registered file displayed in the **[Settings list]** field.

[Update] button

This updates the registered file displayed in the **[Settings list]** field to the setting being edited.

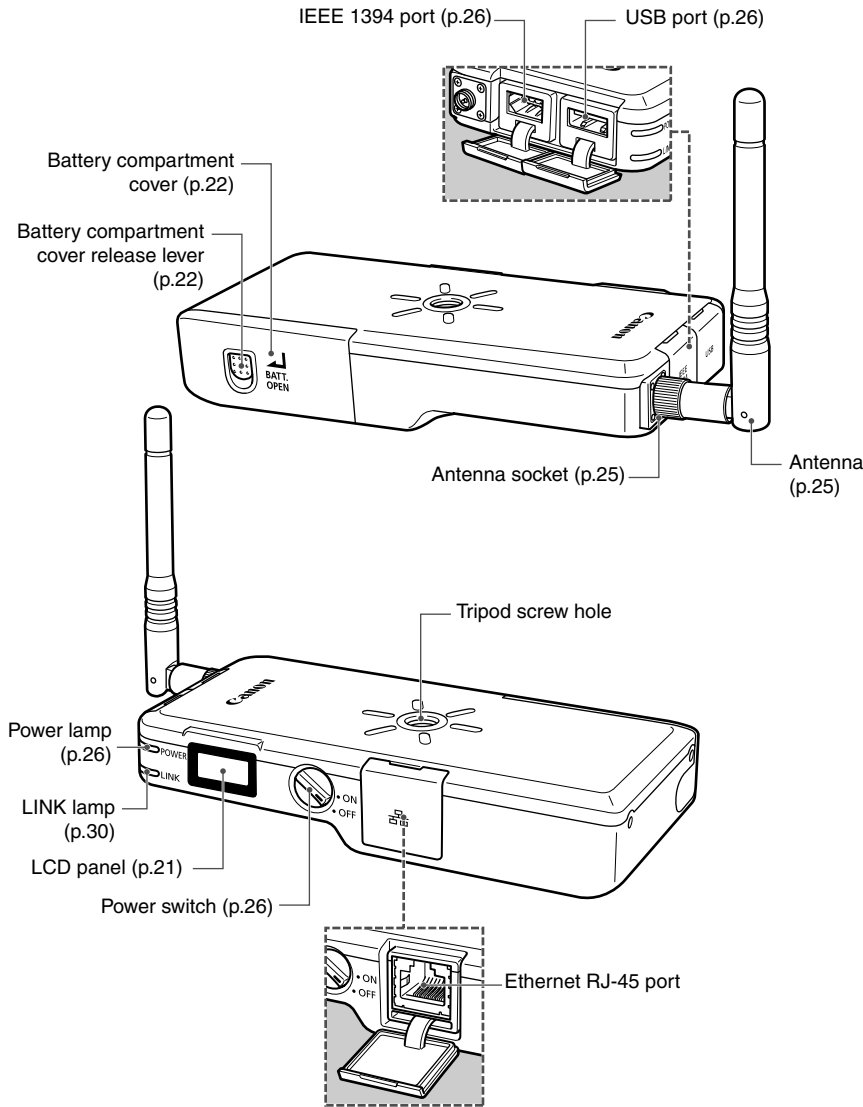


Setting Up the WFT-E1A

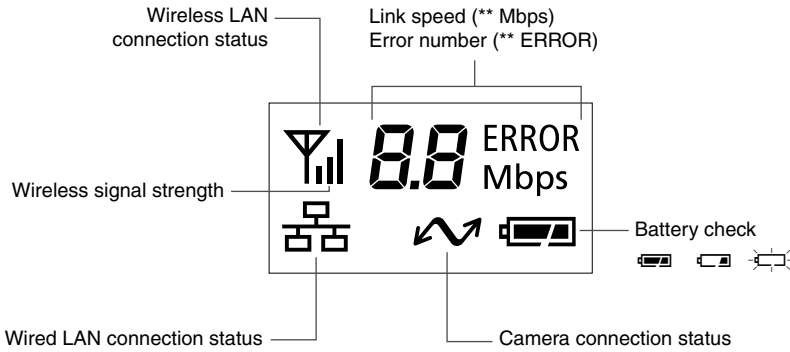
This chapter explains the WFT-E1A's nomenclature and preparatory steps for image transfers.

Nomenclature

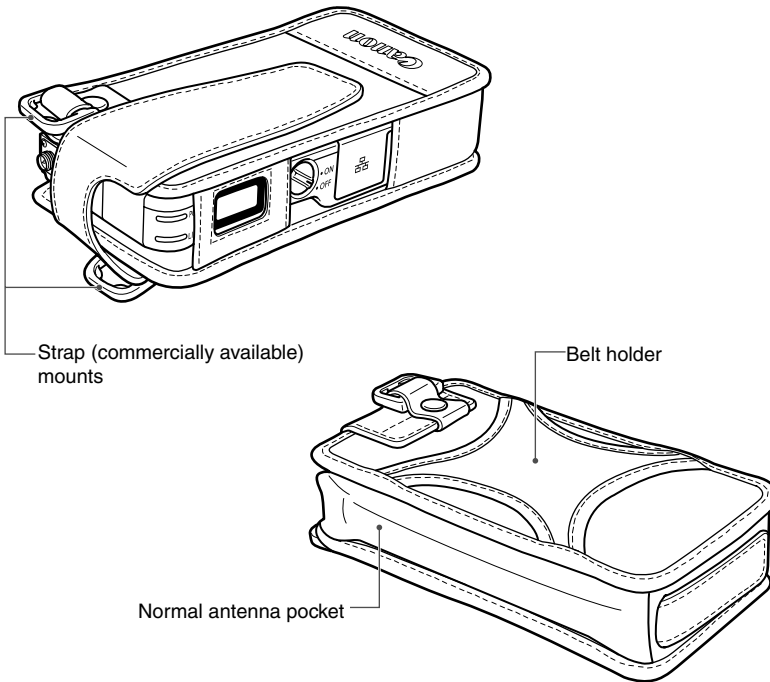
For detailed information, reference page numbers are provided in parentheses (p.**).



LCD Panel



Case

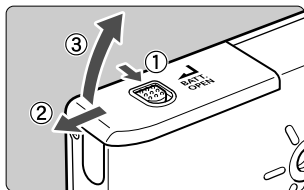


Water and dust resistance is further improved by using the WFT-E1A inside the supplied case. Under extreme operating conditions, insert the WFT-E1A into the supplied case during usage.

Installing and Removing the Battery ■

The WFT-E1A can be powered by Battery Pack BP-511A, BP-514, BP-511, or BP-512. The battery pack and Battery Charger CB-5L or CG-580 do not come with the WFT-E1A. Purchase them separately if necessary.

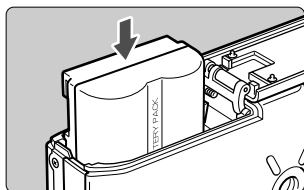
Installing the Battery



1

Open the battery compartment cover.

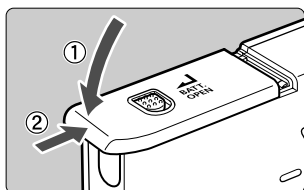
- Push down the release lever and slide the cover to the left.



2

Insert the battery.

- The battery contacts must face upward. Insert it all the way in until it locks in place.



3

Close the cover.

- Close the cover, then slide it to the right.

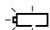
Checking the Battery Level

When you turn on the power switch (ON), the battery power level is indicated in one of three levels.



 : Battery level OK.

 : Battery level is low.

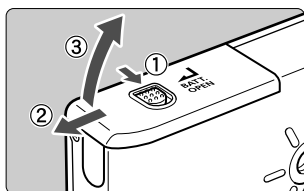
 : Battery must be recharged.

Battery Life

LAN type	Temperature	Continuous Image Transfer Time [minutes]
Wireless LAN	At 20°C / 68°F	180
	At 0°C / 32°F	120
Ethernet	At 20°C / 68°F	270
	At 0°C / 32°F	180

- The above figures apply when a fully-charged Battery Pack BP-511A is used.
- The battery life is based on Canon's testing standards. The actual battery life may be shorter than the figures above depending on the operating conditions.

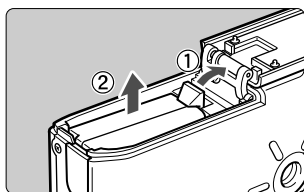
Removing the Battery



1

Open the battery compartment cover.

- Push down the release lever and slide the cover to the left.



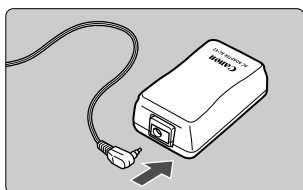
2

Remove the battery.

- Push the battery lock lever as shown by the arrow to unlock it, then take out the battery.

Using a Household Power Outlet ■

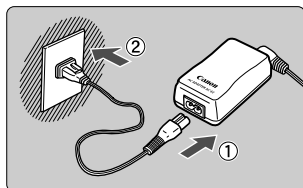
With the AC Adapter Kit ACK-E2 (optional), the WFT-E1A can be powered by a household power outlet.



1

Connect the DC coupler.

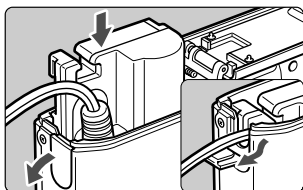
- Connect the DC coupler's plug to the AC adapter's socket.



2

Connect the power cord.

- Connect the power cord to the AC adapter.
- Insert the plug into a power outlet.
- When you are finished, disconnect the plug from the power outlet.



3

Insert the DC coupler.

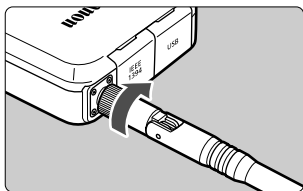
- Open the battery compartment cover and open the DC Coupler cord notch cover.
- Insert the DC Coupler until the lock position and put the cord through the notch.
- Close the cover.



Be sure to turn off the WFT-E1A's power switch before connecting/disconnecting the power cord.

Attaching the Antenna

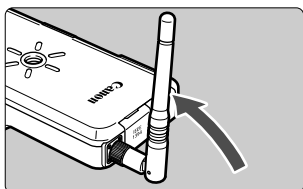
Attaching the Normal Antenna



1

Attach the antenna.

- Turn the antenna's base to screw it in.



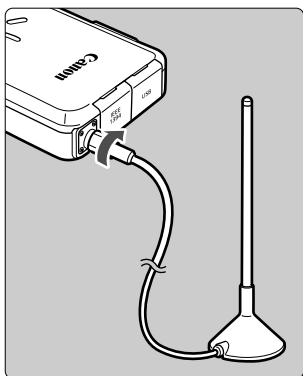
2

Adjust the antenna's direction.

- To maximize the signal strength for transferring images, set the antenna so that it is perpendicular to the ground.

Attaching the Extended Range Antenna ERA-E1 (optional)

This is a high-performance antenna useful if the normal antenna is unable to send an adequate signal.



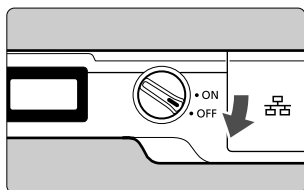
- Turn the antenna cable's base to screw it in.
- The antenna's stand has a tripod socket. Position it so it has a clear line of sight with the wireless LAN access point.
- Before transferring images, position the antenna so that it is perpendicular to the ground to maximize the signal strength.



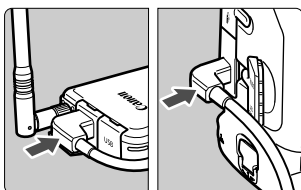
If you use a wired LAN, you need not attach the antenna.

Attaching to the Camera

The WFT-E1A has an IEEE 1394 port and USB port for connecting to the camera. To connect the camera and the WFT-E1A, always use the interface cable that comes with the WFT-E1A. **If the Digital terminal of the camera is IEEE 1394, always use the IEEE 1394 terminal. And if the Digital terminal is USB, set the [Communication] setting menu to [Normal], [PC connect], or [LAN (WFT-E1)]. Images cannot be transferred if the setting is not as above.**



1 Turn off the WFT-E1A and camera.



2 Connect the WFT-E1A and camera.

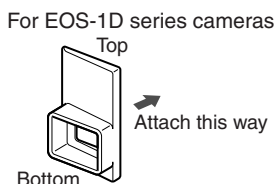
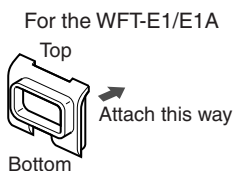
- Connect the cable plug to the WFT-E1A and camera's <DIGITAL> port.
- Use the 15 cm/0.5 ft cable (water- and dust-resistant) that came with the WFT-E1A when the WFT-E1A is attached to the camera's tripod socket.

3 Turn on the WFT-E1A and camera.

- ➔ The WFT-E1A's <POWER> lamp will light and <📷> will be displayed on the WFT-E1A's LCD panel.

Protective Caps for Cable

To use the cable caps with an EOS-1D-series camera, first attach the respective cap to the camera and WFT-E1/E1A. Then attach the cable plug to the <DIGITAL> terminal.



Before disconnecting the cable, turn off both the WFT-E1A and camera.



If the WFT-E1A's <POWER> lamp blinks, it means that the WFT-E1A and camera are not properly connected. Check the connection.

Setting the LAN

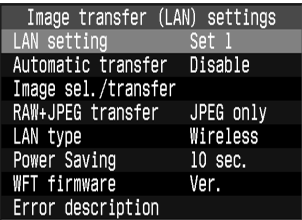
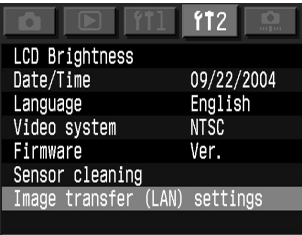
With the settings file you created in Chapter 2, you will enable the camera to be connected to the LAN.

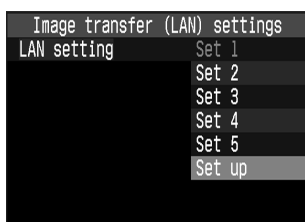
Although the sample menu screens shown are from the EOS-1Ds Mark II, other EOS digital cameras also use the same menu terminology.

For the menu operation procedure, refer to your camera's instruction manual.

Loading the Settings File to the Camera

- 2
Setting Up the WFT-E1A
- 1 **Insert the memory card containing the settings file.**
 - 2 **Connect the WFT-E1A and camera and turn on both.**
 - 3 **Display the menu screen.**
 - Select the Setup menu category.
 - 4 **Select [Image transfer (LAN) settings].**
 - [Image transfer (LAN) settings] will not be displayed if the WFT-E1A and camera are not connected and turned on.
 - 5 **Select [LAN setting].**
 - English will be displayed for any language that the WFT-E1A is not compatible with.



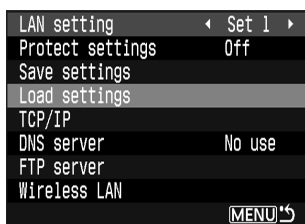


6 Select [Set up].

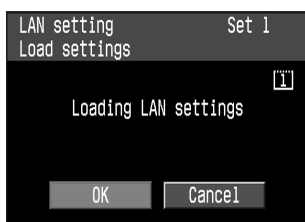


7 Select the Set No. of the settings file you want to load.

- You can have up to five settings from [Set 1] to [Set 5].



8 Select [Load settings].



9 Select [OK].

- The settings file will be loaded into the selected Set No.

Selecting the Settings (Set No.)

Do steps 2 to 5 on page 27.

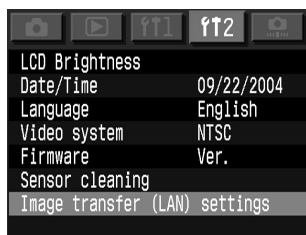
In step 6, select the Set No. that suits the LAN environment you are using.

Selecting the LAN Type

Set the image transfer for the wireless LAN or wired LAN.

2

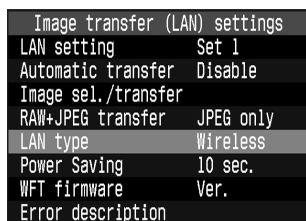
Setting Up the WFT-E1A



1

Select [Image transfer (LAN) settings].

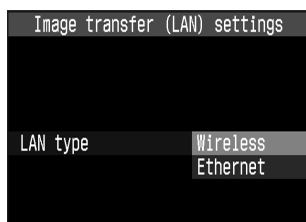
- [Image transfer (LAN) settings] will not be displayed if the WFT-E1A and camera are not connected and turned on.



2

Select [LAN type].

- English will be displayed for any language that the WFT-E1A is not compatible with.



3

Select the LAN type to be used.

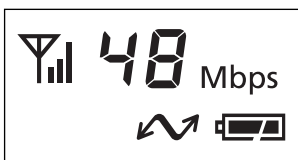
Checking the Connection Status

You can check the status of the connection between the WFT-E1A and camera with the WFT-E1A's LCD panel and lamp.

Checking the Connection Status of the Wireless LAN

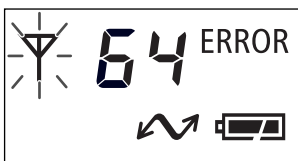
Check the connection right near the wireless LAN access point (or wireless LAN adapter).

Successful connection display



- The LCD panel, <POWER> lamp, and <LINK> lamp will light.
- The number indicates the link speed.

Failed connection display



- The LCD panel will show <ERROR> and the error number (p.52). The <Y> and <POWER> lamps will also blink.



- The more <Y> bars there are, the more stable the image transfer will be.
- The greater the link speed number, the faster the image transfer will be (the actual image transfer speed will be different).

Checking the Connection Status of the Wired LAN

First connect the WFT-E1A and FTP server with a LAN cable.

Successful connection display





- The LCD panel, <POWER> lamp, and <LINK> lamp will light.

Failed connection display



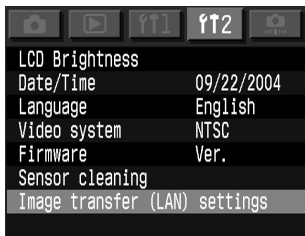
- The LCD panel will show <ERROR> and the error number (p.52). The <Y> and <POWER> lamps will also blink.

 When switching from a wired LAN to a wireless LAN, be sure to keep the LAN cable connected. If you switch to a wireless LAN while the cable is already disconnected, a connection with the wireless LAN might not be established. If <ERROR 81> (p.52) does not disappear, turn the power switch off and on again.

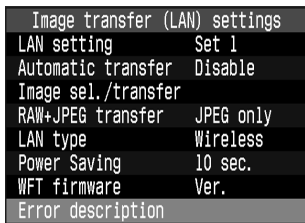
-  • Use a category 5 or higher LAN cable.
- If you are connecting directly to a personal computer without any router or hub, use a cross cable.

Identifying an Error No. Displayed on the Display Panel

If an error occurs, follow the procedure below to identify the error (p.52) and take suitable steps to resolve the error. To resolve an error, you must be knowledgeable about the wireless LAN, wired LAN, and FTP server.



1 Select [Image transfer (LAN) settings].



2 Select [Error description].



3 Select the error No. displayed on the LCD panel.

➔ The respective error description will be displayed.


Power Management

To conserve battery power while the WFT-E1A is not being used, three power management levels are provided:

Power save mode

If you do not use the WFT-E1A for a set period of time, the power save mode takes effect (see below).

Standby mode


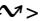
When the camera turns off, the WFT-E1A enters the standby mode. The standby mode is canceled when the camera turns on again. During the standby mode, only the  icon is displayed on the WFT-E1A. The <POWER> lamp and <LINK> lamp will be off.

Auto power off

If the standby mode continues for four hours, the WFT-E1A will turn off. The power turns on again when you set the WFT-E1A's power switch to <OFF>/<ON>.

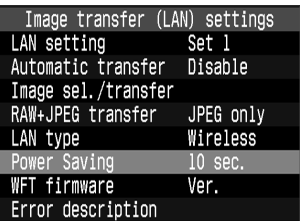
Setting the Power Save Mode

The WFT-E1A enters the power save mode if do not use the WFT-E1A for a set period of time. When you start shooting again, the power save mode will be canceled automatically and images will be transferred.

During the power save mode, only the  and  icons will be displayed on the WFT-E1A's display panel. The <LINK> lamp will be off.

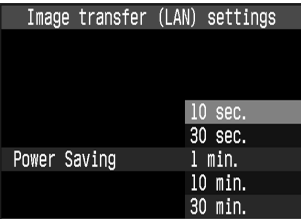


1 Select [Image transfer (LAN) settings].



2 Select [Power saving].

- Select the desired time.



3

Transferring Images

3

Besides transferring images automatically as you shoot, you can also send images in a batch after shooting.

Also, when you shoot in the RAW+JPEG mode, you can send only the JPEG image or RAW image or both images.

This chapter assumes that the WFT-E1A is already connected to an FTP server.

Automatic Image Transfer After Each Shot ■

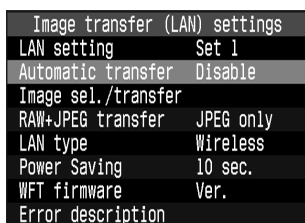
You can transfer the image automatically to an FTP server right after it is taken. You can continue shooting even while an image is being transferred.

Be sure to insert the memory card in the camera when shooting.



1

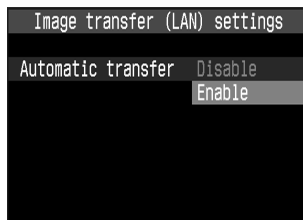
Select [Image transfer (LAN) settings].



2

Select [Automatic transfer].

- Select [Enable].



3

Take the picture.

- ➔ The captured image will be transferred to the FTP server.
- During the image transfer, the <LINK> lamp will blink.



- Images cannot be transferred if the memory card is not inserted.
- During the image transfer, do not turn off the camera's power switch. Doing so will interrupt the image transfer. If there is any image whose transfer failed or was interrupted, you can transfer it later in a batch.



- During continuous shooting, the images will be transferred in the order they were captured.
- The captured images will also be stored in the memory card.

Checking the Remaining Images to be Transferred and Canceling the Image Transfer



During continuous shooting, you can check how many images are remaining to be transferred. Select **[Image transfer (LAN) settings]** on the menu and the number remaining will be displayed. If you select **[Cancel]**, the transferring and transfer standby images will be cancelled.

Checking the Image Transfer History

If you select **[Select]** with **[Image sel./transfer]**, you can check its image transfer history (p.36).

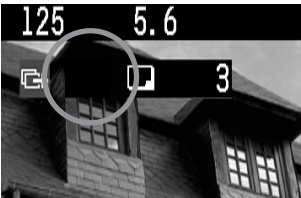


Image not selected for transfer (No icon)



Image to transfer

Image selected for transfer



Image failing transfer

Image failed to transfer (error)

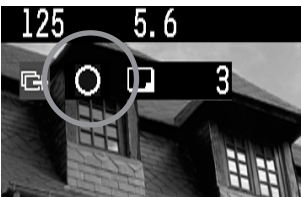


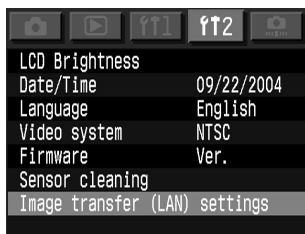
Image transferred

Image transferred successfully

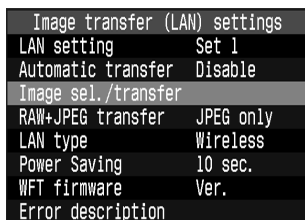
Image Batch Transfer After Shooting

After you finish shooting, you can select the best images and transfer them in a batch. Or you can send images which have not been transferred or which failed transfer. You can continue shooting even while an image is being transferred.

Selecting Images to be Transferred

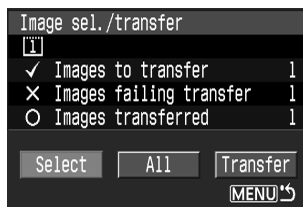


1 Select [Image transfer (LAN) settings].



2 Select [Image sel./transfer].

- Select [Select].



➔ The image will be displayed.



3 Select the image to be transferred.

- Select the image in the same way as for image playback.
- When using a camera with <SELECT> button, turn the <DISP> while holding down the <SELECT> button to display <✓> on the upper left of the image to be transferred. When using a camera with <SET> button, press the <SET> button to display <✓> on the upper left of the image to be transferred. You can select up to 9999 images.
- After selecting the images to be transferred, press the <MENU> button.



4 Transfer the images.

- Select [**Transfer**].
- During the image transfer, the <LINK> lamp will blink.

⚠ During the image transfer, do not turn off the camera's power switch. Doing so will interrupt the image transfer.

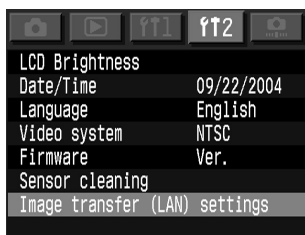
- In step 3, if you set it to the index display, three thumbnail images will be displayed. To return to the normal view, magnify the image view.
- See page 35 for "Checking the Remaining Images to be Transferred and Canceling the Image Transfer."

Checking the Image Transfer History for a Folder or Memory Card



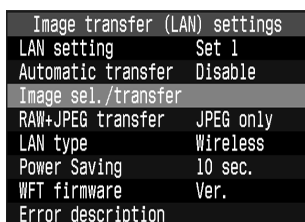
With the left screen displayed in step 2, you can check the number of images to be transferred as well as the image transfer history such as the number of images in the selected folder or card that failed to transfer or that completed the transfer.

Transferring Images in a Batch



1

Select [Image transfer (LAN) settings].



2

Select [Image sel./transfer].

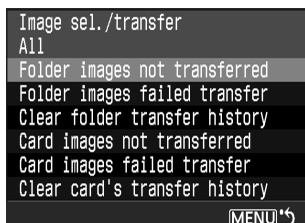
- Select [All].



3

Select the desired option.

- You can select the images in a folder or memory card which have not been transferred or which failed the transfer.
- If your camera cannot select folders, the folder options will not appear.



About [Folder...]

- You can select “images not transferred” or “images failed transfer” in the selected folder.


About [Card...]

- You can select “images not transferred” or “images failed transfer” in the selected memory card.
- After selecting the desired option, press the <MENU> button.



4 Transfer the images.

- Select [**Transfer**].
- During the image transfer, the <LINK> lamp will blink.

 During the image transfer, do not turn off the camera's power switch. Doing so will interrupt the image transfer.



- See page 35 for “Checking the Remaining Images to be Transferred and Canceling the Image Transfer.”
- If you select [**Clear transfer history**], the status of all the images in the folder or memory card will be set to “not transferred.” Then you can resend all the images in the folder or memory card by selecting [**Images not transferred**].

Menu Operation During Image Transfer

You can use the menu even during image transfers. However, the following menu operations cannot be done during image transfers since it may interfere with the image transfer (your camera might not have all these operations):

- Protect images • Rotate • Erase • Print Order • Format
- Firmware • Sensor cleaning
- Save camera settings • Loading camera setting

Overwriting Files with the Same Name

When the utility is configured to prevent overwriting

If there is a file with the same name in the target folder on the FTP server, the new file will be saved with an extension consisting of an underline and a numeral, as in GA5P0003_1.JPG.

When re-transferring images after initial transfer failed

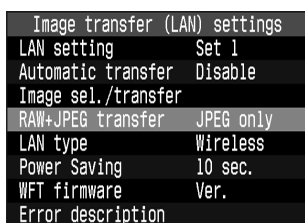
If you transfer an image file that could not be transferred initially when the utility is configured for overwriting, the previous file may not be overwritten in some cases. If this happens, the new file is saved with an extension consisting of an underline, a letter, and a numeral, as in GA5P0003_a1.JPG.

Transferring RAW+JPEG Images

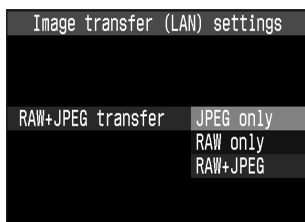
For RAW+JPEG images, you can select which image type to transfer. This option is convenient when you want to first send only the JPEG images that have a smaller file size.



1 Select [Image transfer (LAN) settings].

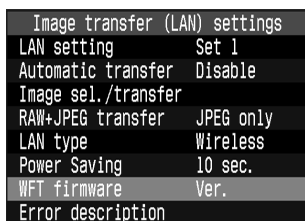


2 Select [RAW+JPEG transfer].



3 Select the desired option.

About [WFT-E1A firmware]



Select this when you want to update the WFT-E1A's firmware. For any new firmware and update procedures, check Canon's Web site.

4

Changing the LAN Settings with the Camera

4

The settings file loaded in the camera can be modified using the menu screen. (Some settings cannot be modified depending on the camera.)

However, using the camera to modify the settings file may be cumbersome due to the settings being deep in the menu hierarchy. Using the software explained in Chapter 2 is recommended to modify the settings file.

This chapter explains the menu structure centering on the menu options that appear on the menu screens.

Setting TCP/IP

DHCP Server

[Image transfer (LAN) settings] → [LAN setting] → [Set up] → [TCP/IP] → [DHCP server]: Select Use or No use.

IP Address

[Image transfer (LAN) settings] → [LAN setting] → [Set up] → [TCP/IP] → [IP address]: Enter number

- Enter the number in the same way as for the [Date/Time].

Subnet Mask

[Image transfer (LAN) settings] → [LAN setting] → [Set up] → [TCP/IP] → [Subnet mask]: Enter the number.

- Enter the number in the same way as for the [Date/Time].

Gateway

[Image transfer (LAN) settings] → [LAN setting] → [Set up] → [TCP/IP] → [Gateway]: Enter the number.

- Enter the number in the same way as for the [Date/Time].

Setting the DNS Server

DNS Server

[Image transfer (LAN) settings] → [LAN setting] → [Set up] → [DNS server] → [DNS server]: Select Use or No use.

Address

[Image transfer (LAN) settings] → [LAN setting] → [Set up] → [DNS server] → [Address]: Enter the number.

- Enter the number if you use a DNS server.
- Enter the number in the same way as for the [Date/Time].

Target Server

[Server name]

[Image transfer (LAN) settings] → **[LAN setting]** → **[Set up]** → **[FTP server]** → **[Target server]** → **[Server name]**: Enter server name or address.

[Port No.]

[Image transfer (LAN) settings] → [LAN setting] → [Set up] → [FTP server] → [Target server] → [Port No.]: Enter a number less than 65535.

Virtual Keyboard Operation



You can enter the server name using the following method.

With EOS-1D-Series Cameras


Moving the cursor:

Hold down the **< [F4] Q >** button and turn the **< [RST/CLK] >** dial.

Deleting a character in the entry field:

Press the button and the cursor will delete the character on its left.


Selecting a keyboard character and entering it:

Hold down the <SELECT> button and turn the <> dial to select a character. When you let go of the button, the character will be entered at the cursor's position.

Exiting the entry screen:

Press the <MENU> button. The entries will be registered and the previous screen will reappear.

Canceling the entry:

Press the  button and no changes will be made to the entry. The previous screen will reappear.

With Cameras Other than EOS-1D-Series

Switching between the entry field and keyboard:

Press the <JUMP> button to switch between the entry field and keyboard.

Moving the cursor in the entry field:

Turn the <◂◃> dial.

Deleting a character in the entry field:

Press the <⏮> button and the cursor will delete the character on its left.

Selecting a keyboard character and entering it:

Turn the <◂◃> dial to select a character. Press the <SET> button to enter the character at the cursor's position.

Exiting the entry screen:

Press the <MENU> button. The entries will be registered and the previous screen will reappear.

Canceling the entry:

Press the <INFO.> button and no changes will be made to the entry. The previous screen will reappear.

Login name

[Image transfer (LAN) settings] → [LAN setting] → [Set up] → [FTP server] → [Login name]: Enter your login name.

Login password

[Image transfer (LAN) settings] → [LAN setting] → [Set up] → [FTP server] → [Login password]: Enter your login password.

Target folder

[Image transfer (LAN) settings] → [LAN setting] → [Set up] → [FTP server] → [Target folder]: Enter the save folder.

Passive Mode

[Image transfer (LAN) settings] → [LAN setting] → [Set up] → [FTP server] →
[Passive mode]: Select Use or No use.

Proxy

[Proxy]

[Image transfer (LAN) settings] → [LAN setting] → [Set up] → [FTP server] → [Proxy]
→ [Proxy]: Select Use or No use.

[Address]

[Image transfer (LAN) settings] → [LAN setting] → [Set up] → [FTP server] → [Proxy]
→ [Address]: Enter number

- Enter the number in the same way as for the [Date/Time].

[Port No.]

[Image transfer (LAN) settings] → [LAN setting] → [Set up] → [FTP server] → [Proxy]
→ [Port No.]: Enter a number less than 65535.

Overwrite Same File

[Image transfer (LAN) settings] → [LAN setting] → [Set up] → [FTP server] →
[Overwrite same file]: Select Yes or No.

Setting Wireless LAN

SSID

[Image transfer (LAN) settings] → [LAN setting] → [Set up] → [Wireless LAN] → [SSID]: Enter the SSID.

Advanced settings

You can set the connection method, authentication method, encryption, etc.

[Image transfer (LAN) settings] → [LAN setting] → [Set up] → [Wireless LAN] → [Advanced settings]: If you enter the settings for the wireless LAN access point (or wireless LAN adapter), the following screens will be displayed automatically.

The settings which can be set will vary automatically depending on the configuration.



MAC Address

[Image transfer (LAN) settings] → [LAN setting] → [Set up] → [Wireless LAN] → [MAC address]: The MAC address will be displayed

Protecting and Saving the Settings ■

Protect Settings

[Image transfer (LAN) settings] → [LAN setting] → [Set up] → [Protect settings]:

Select On or Off.

- Select [**On**] to prevent the LAN settings from being modified inadvertently.
- Select [**Off**] if you want to change the LAN settings with the camera.

Save Settings

[Image transfer (LAN) settings] → [LAN setting] → [Set up] → [Save settings] →

[OK]: The settings will be saved in the memory card.

5

Reference

Troubleshooting Guide

If you think there is a problem with the WFT-E1A, first read the probable causes below. Also read the troubleshooting section in your camera's instruction manual.

Software

The software does not startup.

- **Your personal computer does not meet the software's operating requirements.**
 - ➡ Use a personal computer that meets the software's operating requirements.

Power Source

The <POWER> lamp does not turn on when you turn on the <⊖> switch.

- **The battery is exhausted.**
 - ➡ Recharge the battery.
- **The battery is not installed properly.**
 - ➡ Install the battery properly (p.22).

The battery becomes exhausted quickly.

- **The battery is not fully charged.**
 - ➡ Recharge the battery fully.
- **The battery's service life has ended.**
 - ➡ Replace the battery with a new one.

The power turns off by itself.

- **Auto power off is in effect.**
 - ➡ Turn on the <⊖> switch again or disable the auto power off function (p.32).

<⊖> blinks on the LCD panel.

- **The battery is almost exhausted.**
 - ➡ Recharge the battery.

Menu Functions

LAN menu options do not appear.

- **The WFT-E1A is not connected to the camera and both are not turned on.**
- ➔ The LAN menu options will appear only if the WFT-E1A is connected to the camera and both are turned on (p.27).

LAN menu options are in English.

- **You selected an interface language not compatible with LAN menus.**
- ➔ English will be displayed for languages not compatible with the LAN menus (p.29).

LAN Functions

The <POWER> lamp blinks and images cannot be transferred.

- **The WFT-E1A is not securely connected to the camera.**
- ➔ Check whether the cable is securely connected to the WFT-E1A and camera (p.26).
- **The WFT-E1A is connected to the EOS-1D-series camera with a USB cable.**
- ➔ To connect an EOS-1D-series to the WFT-E1A (p.26), use an IEEE 1394 cable.

Although there is no <ERROR> displayed, images cannot be transferred.

- **The correct [LAN type] setting (wireless LAN/wired LAN) in the menu has not been selected.**
- ➔ Set the correct LAN type (p.29).
- **You are trying to connect to the IEEE 802.11g wireless LAN access point via ad hoc.**
- ➔ For the wireless LAN setting, set it to infrastructure instead (p.15).

Error Number Description

If there is a problem with the LAN connection, one of the error numbers below will be displayed on the WFT-E1A's display panel. You can also check the error number with the camera's menu screen (p.31).

Error Number	Description
01	Problem with camera cable connection
21	No address assigned by DHCP server
22	No response from DNS server
23	Duplicate IP address
24	No response from proxy server
25	Other terminal has set the same IP address
41	Cannot connect to FTP server
42	FTP server rejected connection
43	Cannot connect to FTP server. Error code received from server.
44	Cannot disconnect FTP server. Error code received from server.
45	Cannot login to FTP server. Error code received from server.
46	For the data session, error code received from FTP server
47	Image file transfer completion not confirmed by FTP server
61	Same SSID wireless LAN terminal not found
62	No response from wireless LAN terminal
63	Wireless LAN authentication failed
64	Cannot connect to wireless LAN terminal
65	Wireless LAN connection lost
81	Wired LAN connection lost



If an <ERROR 01> message is not cleared even if there is no problem with the interface cable connection, try turning off the WFT-E1A and camera and turning them back on again.

Specifications

• Type

Type: Image transfer accessory compatible with IEEE 802.11b/IEEE 802.11g wireless LAN and Ethernet

• Wireless LAN

Standards Compliance: ARIB STD-T66 (data transmission system)

IEEE 802.11b/IEEE 802.11g

Transmission Method: DS-SS modulation (IEEE 802.11b), OFDM modulation (IEEE 802.11g)

Transmission range: Approx. 60 m / 197 ft (with normal antenna)

Approx. 150 m / 492 ft (with extended range antenna)

* Link speed IEEE 802.11b: 1 Mbps, IEEE 802.11g: 6 Mbps

* With no obstructions between the transmitting and receiving antennas and no radio interference.

* With the high-performance, large antenna attached to the wireless LAN access point.

Transmission frequency: 2412 MHz - 2462 MHz (Central frequency, total 11 channels)

Link speed: 1/2/5.5/6/9/11/12/18/24/36/48/54 Mbps

Connection method: Infrastructure or ad hoc (IEEE 802.11b only)

Security: Authentication method: Open, shared key, WPA-PSK

Encryption: WEP, TKIP

Power consumption: Max. approx. 3.5 W

• Wired LAN

Standards Compliance: IEEE 802.3u (Ethernet 100BASE-TX)

• Interface

Camera connection: IEEE 1394 port (6-pin), USB 2.0 port (Type A)

Personal computer connection: RJ-45 for Ethernet

• Continuous Image Transfer Time

Wireless LAN: At 20°C / 68°F: Approx. 180 min., At 0°C / 32°F: Approx. 120 min.

Wired LAN: At 20°C / 68°F: Approx. 270 min., At 0°C / 32°F: Approx. 180 min.

• Power Source

Battery: Battery Pack BP-511A/514/511/512

AC power: AC Adapter Kit ACK-E2

• Dimensions and Weight

Dimensions (W x H x D): 140 x 26.3 x 65 mm / 5.5 x 1.0 x 2.6 in

Weight: Approx. 165 g / 5.82 oz (including normal antenna. excluding battery)

• Operating Environment

Working temperature range: 0°C - 45°C / 32°F - 113°F

Working humidity: 85% or less

• Extended Range Antenna ERA-E1 (optional)

Max. diameter x length: 60 x 191 mm / 2.36 x 7.52 in

Weight: Approx. 100 g / 3.53 oz

Cable length: 1.5 m / 4.92 ft

- All the specifications above are based on Canon's testing standards.
- The camera's specifications and physical appearance are subject to change without notice.

DECLARATION of CONFORMITY

We, **CANON INC.** of the above address, hereby declare, at our sole responsibility, that the following product conforms to the Essential Requirements of the Radio and Telecommunications Terminal Equipment Directive 1999/5/EC in accordance with the tests conducted to the appropriate requirements of the relevant standards, as listed herewith.

Product: **Wireless File Transmitter**

Model/ Type Number: **DS508151 and DS508152**

Directive and Standards used:	<u>Radio:</u>	EN300 328 V1.5.1
	<u>EMC:</u>	EN301 489-1 V1.5.1 * EN301 489-17 V1.2.1
	<u>Safety:</u>	EN60950: 2000

Year of affixing CE marking: 2004

Note; The standard marked with an asterisk is those added to our previous Declaration of Conformity.

Signature : 

Name : Ando Kazuhiro

Position : General Manager,
Image Communication Environment & Safety Promotion Div.

Date : December 7, 2005



Statement on EC directive

Hereby, CANON INC., declares that this DS508151 is in compliance with the essential requirements and other relevant provisions of Directive 1999/5/EC.
CANON INC. vakuuttaa täten että DS508151 tyyppinen laite on direktiivin 1999/5/EY oleellisten vaatimusten ja sitä koskevien direktiivin muiden ehtojen mukainen.
Hierbij verklaart CANON INC. dat het toestel DS508151 in overeenstemming is met de essentiële eisen en de andere relevante bepalingen van richtlijn 1999/5/EG
Bij deze verklaart CANON INC. dat deze DS508151 voldoet aan de essentiële eisen en aan de overige relevante bepalingen van Richtlijn 1999/5/EC.
Par la présente CANON INC. déclare que l'appareil DS508151 est conforme aux exigences essentielles et aux autres dispositions pertinentes de la directive 1999/5/CE
Par la présente, CANON INC. déclare que ce DS508151 est conforme aux exigences essentielles et aux autres dispositions de la directive 1999/5/CE qui lui sont applicables
Härmed intygar CANON INC. att denna DS508151 står i överensstämmelse med de väsentliga egenskapskrav och övriga relevanta bestämmelser som framgår av direktiv 1999/5/EG.
Undertegnede CANON INC. erklærer herved, at følgende udstyr DS508151 overholder de væsentlige krav og øvrige relevante krav i direktiv 1999/5/EF
Hiermit erklärt CANON INC., dass sich <i>dieser/diese/dieses</i> DS508151 in Übereinstimmung mit den grundlegenden Anforderungen und den anderen relevanten Vorschriften der Richtlinie 1999/5/EG befindet". (BMW i)
Hiermit erklärt CANON INC. die Übereinstimmung des Gerätes DS508151 mit den grundlegenden Anforderungen und den anderen relevanten Festlegungen der Richtlinie 1999/5/EG. (Wien)
<i>ΜΕ ΤΗΝ ΠΑΡΟΥΣΑ CANON INC. ΔΗΛΩΝΕΙ ΟΤΙ DS508151 ΣΥΜΜΟΡΦΩΝΕΤΑΙ ΠΡΟΣ ΤΙΣ ΟΥΣΙΩΔΕΙΣ ΑΠΑΙΤΗΣΕΙΣ ΚΑΙ ΤΙΣ ΛΟΙΠΕΣ ΣΧΕΤΙΚΕΣ ΔΙΑΤΑΞΕΙΣ ΤΗΣ ΟΔΗΓΙΑΣ 1999/5/ΕΚ</i>
Con la presente CANON INC. dichiara che questo DS508151 è conforme ai requisiti essenziali ed alle altre disposizioni pertinenti stabilite dalla direttiva 1999/5/CE.
Por medio de la presente CANON INC. declara que el DS508151 cumple con los requisitos esenciales y cualesquiera otras disposiciones aplicables o exigibles de la Directiva 1999/5/CE
CANON INC. declara que este DS508151 está conforme com os requisitos essenciais e outras disposições da Directiva 1999/5/CE.
Hawnhekk, CANON INC. jiddikjara li dan DS508151 jikkonforma mal-htigijiet essenzjali u ma provvedimenti oħrajn relevanti li hemm fid-Direttiva 1999/5/EC
Käesolevaga kinnitab CANON INC. seadme DS508151 vastavust direktiivi 1999/5/EÜ põhinõuetele ja nimetatud direktiivist tulenevatele teistele asjakohastele sätetele.
Alulírott, CANON INC. nyilatkozom, hogy a DS508151 megfelel a vonatkozó alapvető követelményeknek és az 1999/5/EC irányelv egyéb előírásainak.
CANON INC. týmto vyhlasuje, že DS508151 splňa základné požiadavky a všetky príslušné ustanovenia Smernice 1999/5/ES.
CANON INC. tímto prohlašuje, že tento DS508151 je ve shodě se základními požadavky a dalšími příslušnými ustanoveními směrnice 1999/5/ES.
Šiuo CANON INC. deklaruoja, kad šis DS508151 atitinka esminius reikalavimus ir kitas 1999/5/EB Direktivos nuostatas.
Ar šo CANON INC. deklarē, ka DS508151 atbilst Direktīvas 1999/5/EK būtiskajām prasībām un citiem ar to saistītajiem noteikumiem.
CANON INC. niniejszym oświadcza, że DS508151 spełnia zasadnicze wymogi oraz inne istotne postanowienia dyrektywy 1999/5/EC.

Index

A

AC Adapter	24
Ad hoc	2, 16
Address	43, 46
Advanced settings	47
Anonymous.....	14
Anonymous login	14
Antenna	20, 25
ANY connection	15
ASCII	16
Authentication.....	16
Automatic transfer	34

B

Battery	22
Battery Charger	22
Battery check.....	22
Battery Life	23

C

Camera connection status.....	21
Cancel	35
Case	21
Channel	16
Clear transfer history	39
Conn. Method	16

D

DHCP Server.....	11, 42
DNS Server	11, 43

E

Encryption.....	16
Error.....	31, 52
Error description	31
Error number	21, 30
Ethernet.....	2
Ethernet RJ-45 port	20
Extended Range Antenna	25

F

Firmware.....	40
---------------	----

FTP	12
FTP Server	2, 44

G

Gateway.....	42
--------------	----

H

Hexadecimal	16
-------------------	----

I

IEEE 1394 port	20, 26
IEEE 802.11g.....	16
Image not selected for transfer	35
Image sel./transfer	35, 36, 38
Image Transfer History	35, 37
Images failing transfer	35, 36, 37, 38
Images not transferred.....	36, 38
Images to transfer	35
Images transferred.....	35, 37
Infrastructure.....	2, 16
IP Address	11, 42

K

Key Format	16
------------------	----

L

LAN setting	27
LAN type	29
LCD Panel	20, 21
LINK lamp	20, 30
Link speed	21, 30
Load settings	28
Login name	45
Login password.....	45

M

MAC Address.....	47
Menu Operation	39

N

Normal Antenna	25
----------------------	----

O

Open System..... 16
 Overwrite Same File 14, 39, 46

P

Passive Mode 12, 46
 Password..... 14
 Port No. 12, 14, 44, 46
 Power lamp..... 20, 30
 Power switch 20, 26
 Protect Settings 16, 48
 Proxy 14, 46
 Option 14

R

RAW+JPEG Images 40
 Registering the Settings 18

S

Save Settings 17, 48
 Select..... 35
 Server name 44
 Settings File..... 9, 17, 27
 Shared key 16
 SSID 15, 47
 Search..... 15
 Subnet Mask..... 11, 42

T

Target folder 13, 45
 Browse 13
 New folder 13
 Test writing 13
 Target Server..... 12, 44
 TCP/IP 11, 42
 TKIP 16
 Transfer 37
 Transferring Images in a Batch 36, 38

U

USB port 20, 26

V

Virtual Keyboard 44

W

WEP 16
 Wired LAN connection status 21
 Wireless LAN 15
 Wireless LAN access point 2
 Wireless LAN adapter 2
 Wireless LAN connection status 21
 Wireless signal strength..... 21
 Wizard..... 10
 WPA-PSK 16



CANON INC. 30-2, Shimomaruko 3-chome, Ohta-ku, Tokyo 146-8501, Japan

U.S.A. ————— CANON U.S.A. INC.

One Canon Plaza, Lake Success, NY 11042-1198, U.S.A.
For all inquiries concerning this product, call toll free in the U.S.
1-800-OK-CANON

CANADA ————— CANON CANADA INC. HEADQUARTERS

6390 Dixie Road, Mississauga, Ontario L5T 1P7, Canada

CANON CANADA INC. MONTREAL BRANCH

5990, Côte-de-Liesse, Montréal Québec H4T 1V7, Canada

CANON CANADA INC. CALGARY OFFICE

2828, 16th Street, N.E. Calgary, Alberta T2E 7K7, Canada

For all inquiries concerning this product, call toll free in Canada

1-800-OK-CANON

EUROPE, ————— CANON EUROPA N.V.

AFRICA & Bovenkerkerweg 59-61, P.O. Box 2262, 1180 EG Amstelveen, The Netherlands

MIDDLE EAST CANON COMMUNICATION & IMAGE FRANCE S.A.S.

12 Rue de l'Industrie 92414 Courbevoie Cedex, France

CANON UK LTD.

Woodhatch Reigate Surrey RH2 8BF, United Kingdom

CANON DEUTSCHLAND GmbH

Europark Fichtenhain A10, 47807 Krefeld, Germany

CANON ITALIA S.p.A.

Via Milano 8 I-20097 San Donato Milanese, Milano, Italy

CANON Schweiz AG

Geschäftsbereich Wiederverkauf, Industriestrasse 12, CH-8305 Dietlikon,
Switzerland

CANON GMBH

Zetschegasse 11, A-1230 Wien, Austria

CANON España, S. A.

C/Joaquín Costa, 41, 28002 Madrid, Spain

SEQUE Soc. Nac. de Equip., Lda.,

Praça da Alegria, 58, 2º, 1269-149 Lisboa, Portugal

CENTRAL & ————— CANON LATIN AMERICA, INC.

SOUTH AMERICA 703 Waterford Way, Ste. 400 Miami, FL 33126, U.S.A.

ASIA ————— CANON (China) Co., Ltd.

15F, North Tower, Beijing Kerry Center, 1 Guang Hua Road,

Chaoyang District, Beijing 100020, China

CANON HONGKONG CO., LTD.

19/F., The Metropolis Tower, 10 Metropolis Drive, Hung Hom, Kowloon, Hong Kong

CANON SINGAPORE PTE. LTD.

1 HarbourFront Avenue, #04-01 Keppel Bay Tower, Singapore 098632

OCEANIA ————— CANON AUSTRALIA PTY. LTD.

1 Thomas Holt Drive, North Ryde, N.S.W. 2113, Australia

CANON NEW ZEALAND LTD.

Akoranga Business Park, Akoranga Drive, Northcote, Auckland, New Zealand

JAPAN ————— CANON SALES CO., INC.

16-6, Kohnan 2-chome, Minato-ku, Tokyo 108-8011, Japan

This Instruction Manual booklet is current as of September 2004. For information on using the WFT-E1A with accessories introduced after this date, contact your nearest Canon Service Center.