



Canon

Start Here

Easy Setup Instructions

PIXMA MX850 series
Office All-In-One



Unpack the Machine

- Please confirm the included items against the illustration printed on the lid of the packing box.
- A USB cable is necessary to connect the machine with your computer.



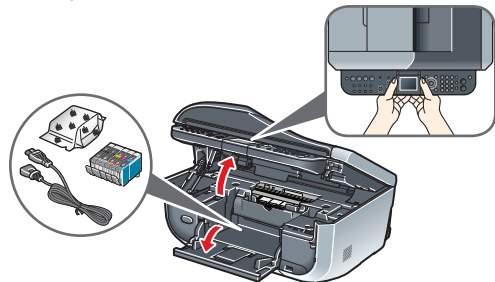
When cleaning the exterior of the machine, use a soft cloth to wipe it gently. For details, refer to "Cleaning Your Machine" in the Quick Start Guide.

1 Prepare the Machine

- 1 Lift the Scanning Unit (Printer Cover) until it locks into place, open the Paper Output Tray, then take out the Print Head, ink tanks and power cord from inside the machine.

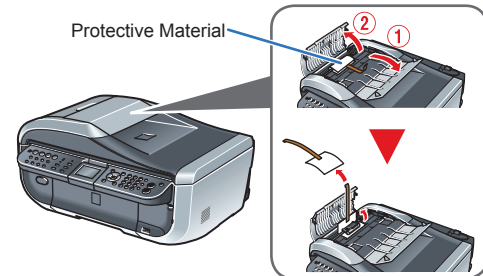


- Before turning on the machine, remove all of the shipping tapes and protective material.
- For your safety, always firmly grip the areas illustrated when lifting the Scanning Unit (Printer Cover).



If the Document Cover is opened, you cannot open the Scanning Unit (Printer Cover). Be sure to open the Scanning Unit (Printer Cover) with the Document Cover closed.

- 2 Remove the protective material in the ADF (Auto Document Feeder).

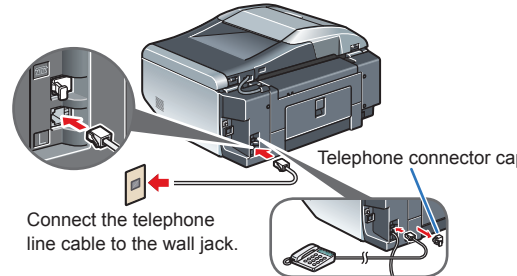


The tape or the protective material position is subject to change.

- 3 Connect the telephone line and any necessary external device.

You can connect an external device (telephone or answering machine) if necessary.

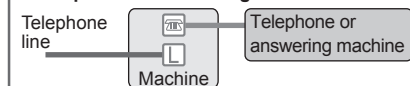
Remove the Telephone connector cap to connect the external device.



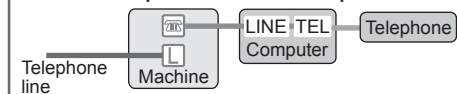
Connect external devices as follows:

- External Device Jack
- Telephone Line Jack

Telephone or answering machine

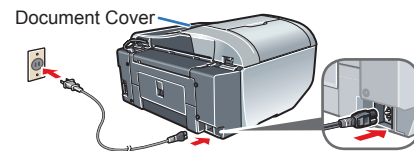


Built-in computer modem and telephone



Be sure to use the bundled telephone line cable.

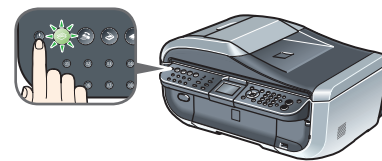
- 4 Plug the power cord in the back of the machine and connect the other end to the wall outlet.



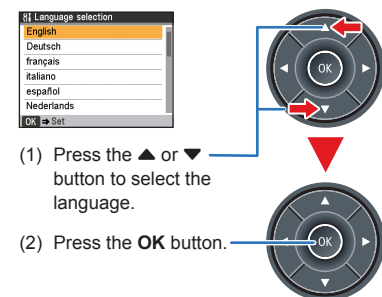
- Make sure that the Document Cover is closed.
- Do NOT connect the USB cable at this stage.

- 5 Press the **ON/OFF** button to turn on the machine.

The machine will initialize. Wait until the **COPY** button stops flashing and remains lit green.



- 6 Press the **▲** or **▼** button on the Operation Panel to select the language for the LCD, then press the **OK** button.

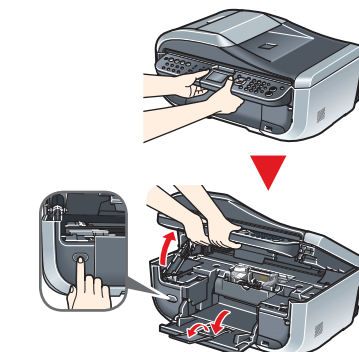


If an unintended language is displayed on the LCD, press the **Back** button on the Operation Panel to return to the Language selection screen.

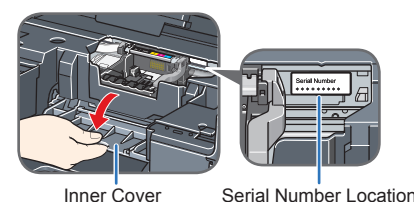
Once the message "Install the print head and set the ink tank." appears, go to 7.

- 7 Lift the Scanning Unit (Printer Cover) until it locks into place. The Paper Output Tray will open automatically and the Print Head Holder moves to the center. Then open the Output Tray Extension.

If the Paper Output Tray does not open automatically, press the **Open** button to open it.

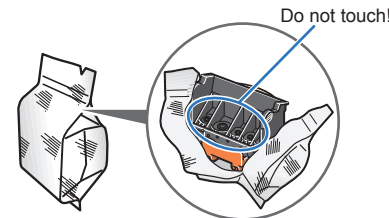


- 8 Open the Inner Cover. Write down the serial number located inside the machine. You will need this to register your product.



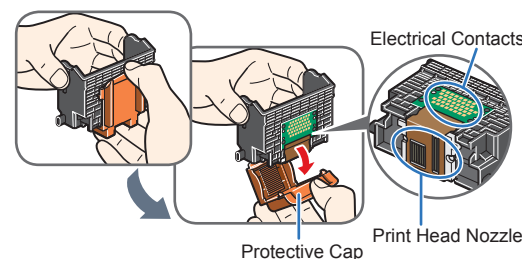
2 Install the Print Head

- 1 Remove the Print Head from its package.



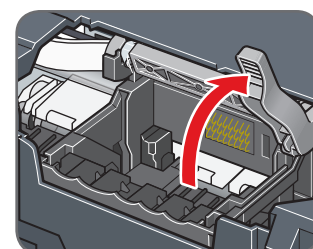
There may be some transparent or light blue ink on the inside of the bag the print head comes in, or the inside of the protective cap - this has no effect on print quality. Be careful not to get ink on yourself when handling these items.

- 2 Remove the orange protective cap from the Print Head and discard it.



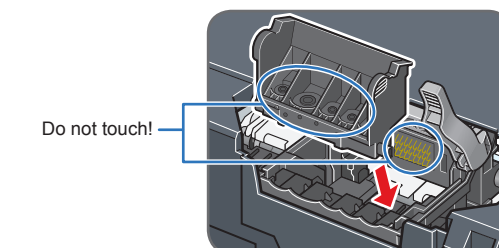
Do not touch the print head nozzles or the electrical contacts.

- 3 Firmly raise the Print Head Lock Lever until it stops. The Print Head Lock Lever may feel heavy.

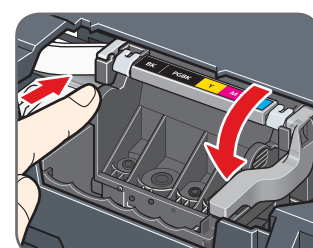


- Make sure that the machine is turned on and the **COPY** button lights green.
- Make sure that the Print Head Holder has moved to the center.

- 4 Insert the Print Head.



- 5 Push the Print Head to hold it in place, and lower the Print Head Lock Lever.



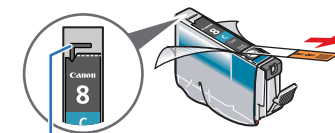
If the Scanning Unit (Printer Cover) is left open for more than 10 minutes, the Print Head Holder moves to the right. Close and reopen the Scanning Unit (Printer Cover) to return the Holder to the center.

3 Install the Ink Tanks



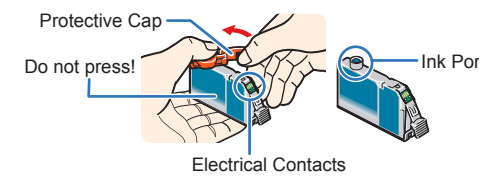
For the ink tanks compatible with this machine, refer to the back cover of the Quick Start Guide.

- 1 Pull the orange tape in the direction of the arrow to peel off the protective film and remove the film completely.



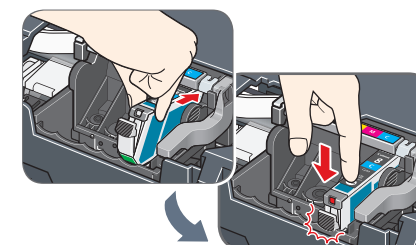
If the air hole is blocked with the remaining film, ink may leak out or may not eject properly.

- 2 Twist off and discard the orange protective cap located on the bottom of the ink tank.

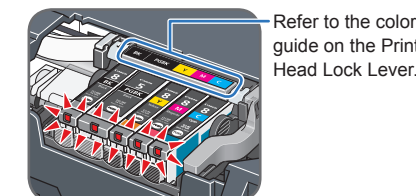


- Do not touch the electrical contacts.
- Do not touch the ink port.

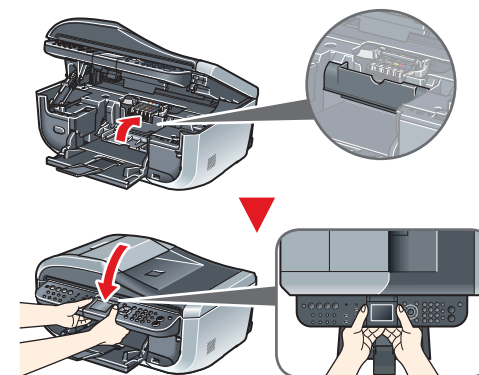
- 3 Insert the ink tank into the right-hand slot and press the **OK** mark on the ink tank until it clicks into place.



- 4 Make sure the ink lamp lights red.



- 5 Close the Inner Cover and the Scanning Unit (Printer Cover).



For your safety, always firmly grip the areas illustrated when closing the Scanning Unit (Printer Cover).



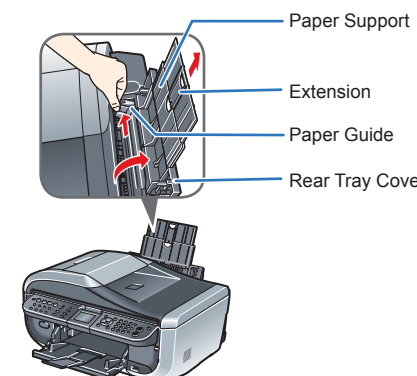
The machine starts the preparatory operation. It takes about two minutes. Do not start another operation until the machine has stopped making operating noises.



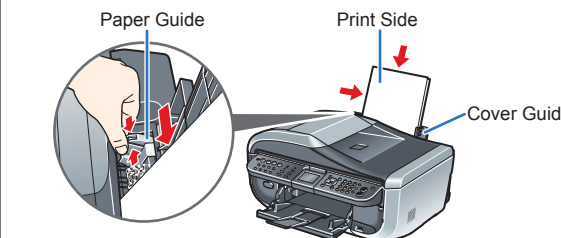
If the **Alarm** lamp lights and an error message is displayed on the LCD, refer to "An Error Message Is Displayed on the LCD" in the Quick Start Guide.

4 Align the Print Head

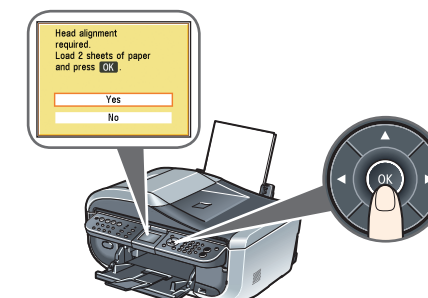
- 1 Open the Rear Tray Cover, pull out the Paper Support, then pinch the Paper Guide and slide it to the left end.



- 2 Load two sheets of supplied paper (MP-101) into the Rear Tray with the printing side (whiter side) facing up, align the paper with the Cover Guide on the right side, then slide the Paper Guide against the paper stack.

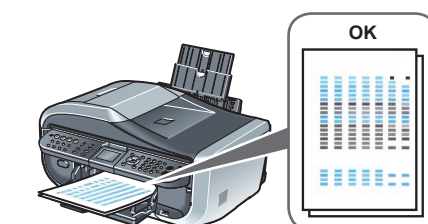


- 3 Make sure that **Yes** is selected in the message requesting head alignment, then press the **OK** button.



Print Head alignment takes about 13 minutes to complete. Do not start another operation until the machine has stopped making operating noises.

The pattern is printed. And Print Head is aligned automatically.



- The pattern is printed in black and blue.
- When Automatic Print Head Alignment cannot be executed correctly, the message "Auto head align has failed." is displayed on the LCD. Refer to "An Error Message Is Displayed on the LCD" in the Quick Start Guide.

Hardware setup and Print Head alignment are complete.

For fax users

To use a fax, you need to set the telephone line type setting properly on the machine.

If you are unsure of your telephone line type, contact your telephone company.

Select the receive mode according to your needs.

- When you receive mainly faxes and sometimes voice calls:

→ **FAX priority mode**

- When you have a dedicated telephone line for fax use only:

→ **FAX only mode**

- When you receive mainly voice calls and sometimes faxes:

→ **TEL priority mode**

- When you subscribe to a ring pattern detection service provided by your telephone company, and you want to receive a fax only if the machine detects the pattern for fax:

→ **DRPD**

For details on how to confirm and change the settings, refer to the Quick Start Guide.

For USB connection, proceed to the Step 5 on the reverse side.

For wired LAN connection, refer to the Network Setup Guide.



USB connection is explained here. For wired LAN connection, refer to the *Network Setup Guide*.

Windows

5 Software Installation

Note

- The screens below refer to Windows Vista™ operating system Ultimate Edition (hereafter referred to as “Windows Vista”) installation.
- Screens may vary depending on the operating system you are using.
- Quit all running applications before installation.
- Log into a user account with the administrator privilege.
- Do not switch users during the installation process.
- A message asking for your confirmation to restart your computer may appear during the installation process. If this message is displayed, follow the on-screen instructions and click **OK**.
- The installation resumes from where it left off when your computer has been restarted. While restarting, do not remove the *Setup CD-ROM*.

1 Be sure to **TURN THE MACHINE OFF** before continuing.

- (1) Press the **ON/OFF** button.
- (2) Make sure that all the lamps on the Operation Panel have gone out.

2 Turn the computer on and start Windows®.

Important

If the **Found New Hardware** or **Found New Hardware Wizard** screen appears automatically, remove the USB cable connected to your computer. Click **Cancel** to quit the screen. In Windows Vista, the screen may close automatically when the USB cable is unplugged. Then turn off the machine and proceed from Step 3 to install the software.



3 Insert the *Setup CD-ROM*.

The setup program should run automatically.

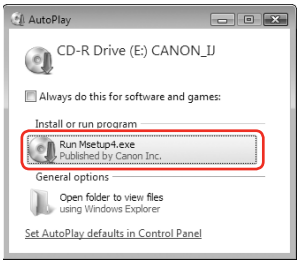
In Windows Vista, go to Step 4. In Windows XP and Windows 2000, go to Step 6.

Note

If the setup program does not run automatically, refer to “Cannot Install the MP Drivers” in the *Quick Start Guide*.

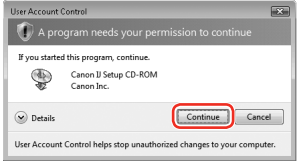
4 If the **AutoPlay** screen appears, click **Run Msetup4.exe**.

This screen will not appear in Windows XP and Windows 2000.



5 If the **User Account Control** screen appears, click **Continue**. If the same screen reappears in subsequent steps, click **Continue**.

This screen will not appear in Windows XP and Windows 2000.



6 When the main menu appears, click **Easy Install**.

The MP Drivers, On-screen Manuals, and application software are installed automatically.



Note

If you want to select particular items to install, click **Custom Install** and follow the on-screen instructions to proceed with the installation.

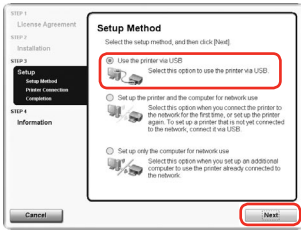
7 When the list of applications to install appears, confirm the contents, then click **Install**.

Note

Move the cursor over items to display explanations of each application.

8 Read the License Agreement carefully and click **Yes**. The software installation screen may appear during the installation process. Read the contents on the screen and follow the on-screen instructions to install the software.

9 When the **Setup Method** screen appears, select **Use the printer via USB**, then click **Next**.

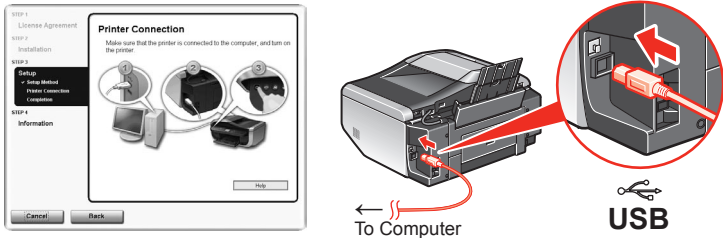


10 When the **Printer Connection** screen appears, connect one end of the USB cable to the computer, the other to the machine, then **TURN THE MACHINE ON**.

The software will begin identifying the printer port being used.

Important

If you cannot go to the next procedure after three minutes, refer to “Cannot Install the MP Drivers” in the *Quick Start Guide*.



11 When the **Setup Complete** screen appears, click **Next**.



12 When the **User Registration** screen appears, click **Next**.

Note

To register later, click **Cancel** and go to Step 13. After software installation is complete, double-click on the desktop.

If your network is connected to the Internet, the registration screen will appear. Follow the on-screen instructions to register your product. You will need your product serial number, which is located on the inside of the machine. See Step 1- 8 on the front page.

13 When the **PIXMA Extended Survey Program** screen appears, confirm the message. We would appreciate it if you would take part in the PIXMA Extended Survey Program regarding the use of Canon printers. If you can agree, click **Agree**.

If **Do not agree** is clicked, the PIXMA Extended Survey Program will not be installed but you can use the machine normally.

14 When the **Installation completed successfully** screen appears, click **Exit**.

The *Setup CD-ROM* will be ejected.

If it is not ejected automatically, remove it manually.

If **Restart** is displayed, make sure that the **Restart the system now (recommended)** check box is selected, then click **Restart**. After the computer restarts, remove the *Setup CD-ROM*.

Note

Keep the CD-ROM in a safe place in case you need to reinstall the software.

Software installation is now complete.

Macintosh

5 Software Installation

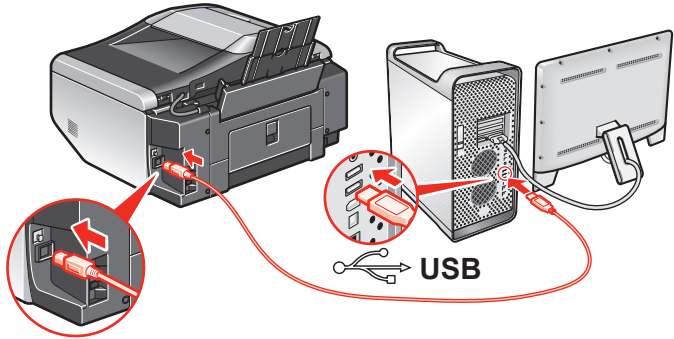
Note

- Since Mac® OS 9, Mac OS X Classic environments, or Mac OS X v.10.3.8 or earlier are not supported, do not connect the machine to these.
- The screens below refer to Mac OS X v.10.4.x installation. Screens may vary depending on the operating system you are using.
- Log on as an Administrator.
- Quit all running applications before installation.

1 Connect one end of the USB cable to the computer and the other to the machine.

Note

Make sure the machine is turned on.



2 Turn on your Mac and insert the *Setup CD-ROM*.

Note

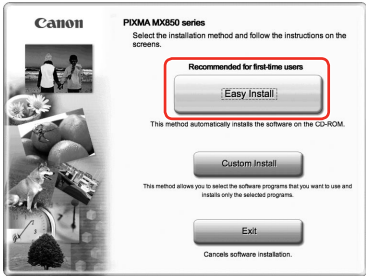
If the CD-ROM folder does not open automatically, double-click the CD-ROM icon on the desktop.

3 Double-click the **Setup** icon.

4 When the **Authenticate** screen appears, enter your administrator name and password. Click **OK**. If you do not know your administrator name or password, click **?**, then follow the on-screen instructions.

5 When the main menu appears, click **Easy Install**.

The MP Drivers, On-screen Manuals, and application software are installed automatically.



Note

If you want to select particular items to install, click **Custom Install** and follow the on-screen instructions to proceed with the installation.

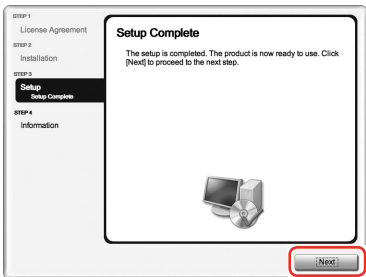
6 When the list of applications to install appears, confirm the contents, then click **Install**.

Note

Move the cursor over items to display explanations of each application.

7 Read the License Agreement carefully and click **Yes**. The software installation screen may appear during the installation process. Read the contents on the screen and follow the on-screen instructions to install the software.

8 When the **Setup Complete** screen appears, click **Next**.



9 When the **User Registration** screen appears, click **Next**.

Note

To register later, click **Cancel** and go to Step 10. After software installation is complete, double-click on the desktop.

If your network is connected to the Internet, the registration screen will appear. Follow the on-screen instructions to register your product. You will need your product serial number, which is located on the inside of the machine. See Step 1- 8 on the front page.

10 When the **Installation completed successfully** screen appears, click **Restart**.

After the computer restarts, remove the *Setup CD-ROM*.



When the computer restarts, the Canon IJ Network Tool will start up automatically.

Note

Keep the CD-ROM in a safe place in case you need to reinstall the software.

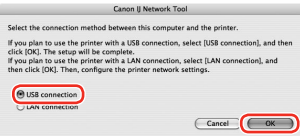
When using Mac OS X v.10.3.9:

Restarting the computer while connected to the machine may cause the machine not to be detected. To resolve this, either unplug the USB cable then plug it back in again, or turn the machine off then back on again.

Note

XXX FAX (where “XXX” is your machine’s name) is shown in the **Printer Name** list (**Product** list in Mac OS X v.10.3.9), but you cannot add **XXX FAX**. You cannot send faxes from your computer via the machine.

11 When the **Canon IJ Network Tool** screen appears, select **USB connection**, then click **OK**.



Note

When using Mac OS X v.10.3.9, before using the Operation Panel on the machine to save scanned originals to the computer, it is necessary to select **MP Navigator EX** as the launch application on **Image Capture** under **Applications**. For details, refer to “Scanning Images” in the *User’s Guide* on-screen manual.

Software installation is now complete.