



Unpack the Machine

- Please confirm the included items against the illustration printed on the lid of the packing box.
- A USB cable is necessary to connect the machine with your computer.

Important

When cleaning the exterior of the machine, use a soft cloth to wipe it gently. For details, refer to "Cleaning Your Machine" in the Quick Start Guide.

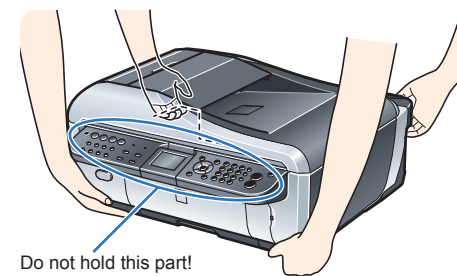
1 Prepare the Machine

- 1 Locate the machine on a level place.

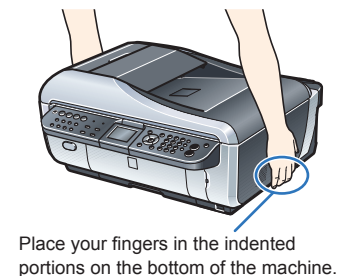
Caution
Since this machine weights approximately 36.6 lbs. (16.6 kg), it is recommended that two people move or relocate the machine.

Note
Be sure to remove the tapes and protective material before you turn on the machine.

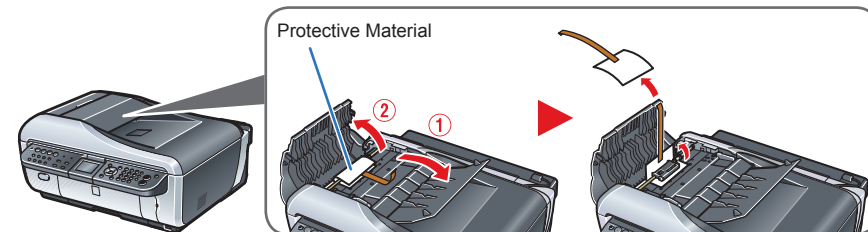
When lifting the machine with two people



When lifting the machine alone



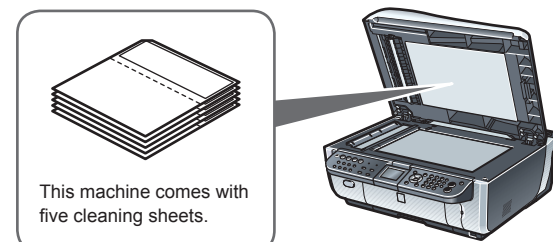
- 2 Remove the protective material in the ADF (Auto Document Feeder).



Note
• The tape or the protective material position is subject to change.

Installing cleaning sheets

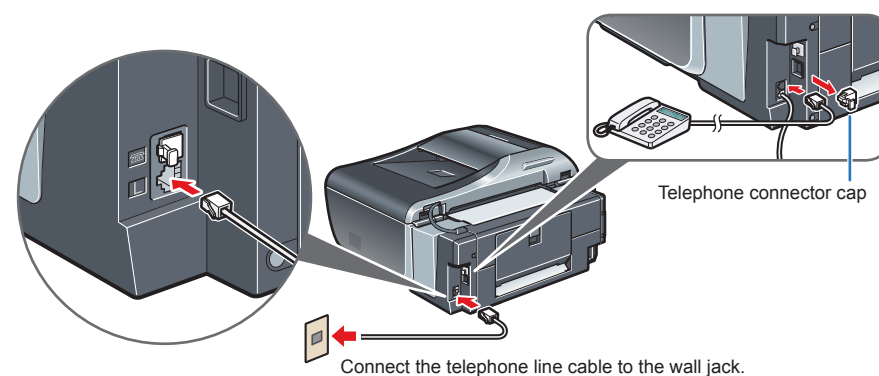
- Cleaning sheets can be stored in the Cleaning Sheet Holder. For details on installing cleaning sheets, refer to "Cleaning the Inside of the Machine (Sheet Cleaning)" in the Quick Start Guide.



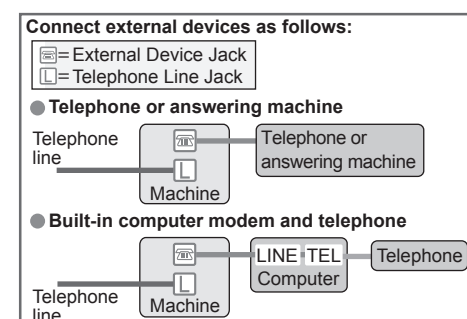
- 3 Connect the telephone line and any necessary external device.

You can connect an external device (telephone or answering machine) if necessary.

Remove the Telephone connector cap to connect the external device.

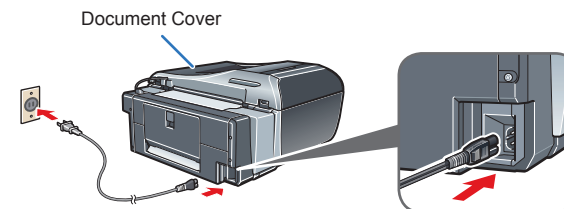


Connect the telephone line cable to the wall jack.



Important
Be sure to use the bundled telephone line cable.

- 4 Plug the power cord in the back of the machine and connect the other end to the wall outlet.

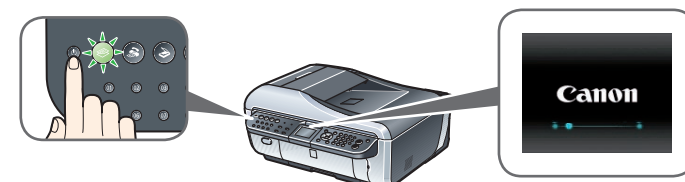


Important

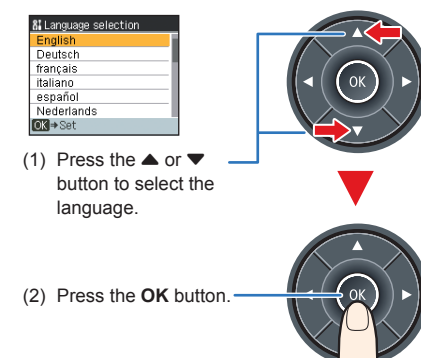
- Make sure that the Document Cover is closed.
- Do NOT connect the USB cable at this stage.

- 5 Press the ON/OFF button to turn on the machine.

The machine will initialize. Wait until the COPY button stops flashing and remains lit green.



- 6 Press the ▲ or ▼ button on the Operation Panel to select the language for the LCD, then press the OK button.



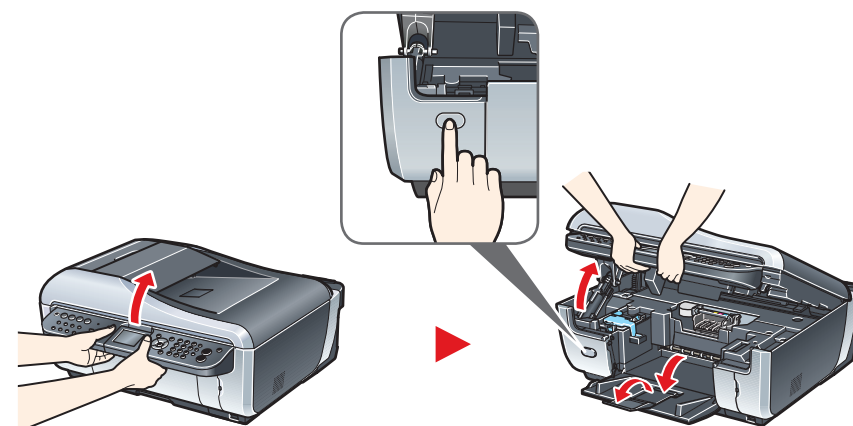
Important

If an unintended language is displayed on the LCD, press the Back button on the Operation Panel to return to the Language selection screen.

Once the message "Install the print head and set the ink tank." appears, go to 7.

- 7 Lift the Scanning Unit (Printer Cover) until it locks into place. The Paper Output Tray will open automatically and the Print Head Holder moves to the center. Then open the Output Tray Extension.

If the Paper Output Tray does not open automatically, press the Open button to open it.



Caution

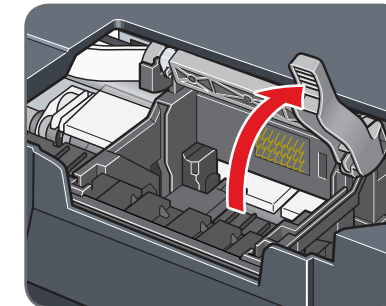
For your safety, always firmly grip the areas illustrated when lifting the Scanning Unit (Printer Cover).

Important

If the Document Cover is opened, you cannot open the Scanning Unit (Printer Cover). Be sure to open the Scanning Unit (Printer Cover) with the Document Cover closed.

2 Install the Print Head

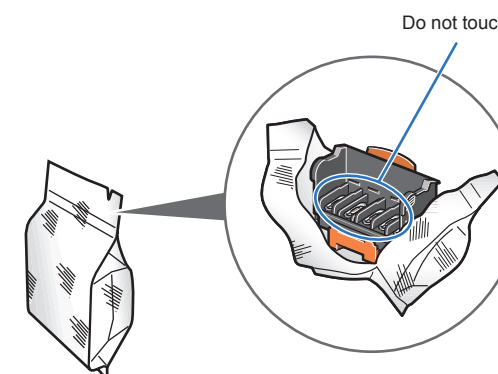
- 1 Firmly raise the Print Head Lock Lever until it stops. The Print Head Lock Lever may feel heavy.



Important

- Make sure that the machine is turned on and the COPY button lights green.
- Make sure that the Print Head Holder has moved to the center.

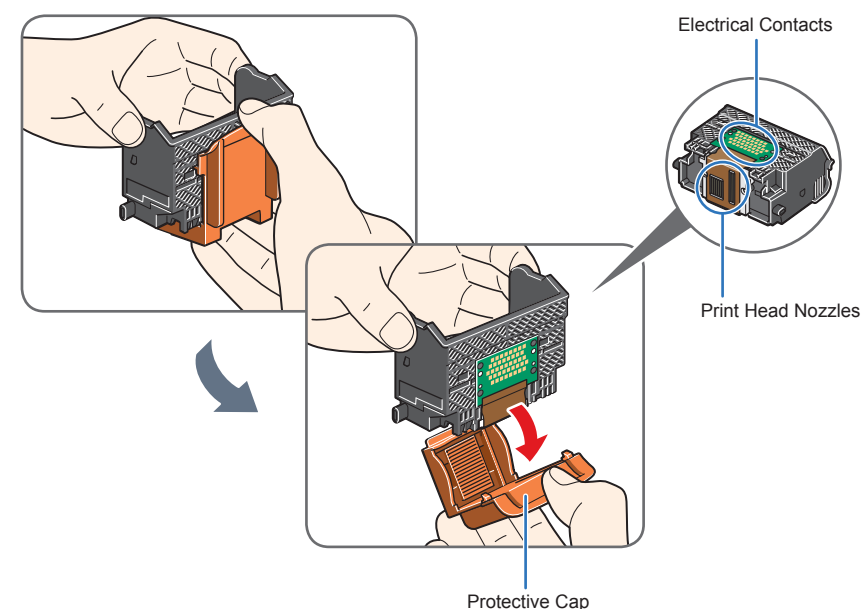
- 2 Remove the Print Head from its package.



Caution

There may be some transparent or light blue ink on the inside of the bag the print head comes in, or the inside of the protective cap - this has no effect on print quality. Be careful not to get ink on yourself when handling these items.

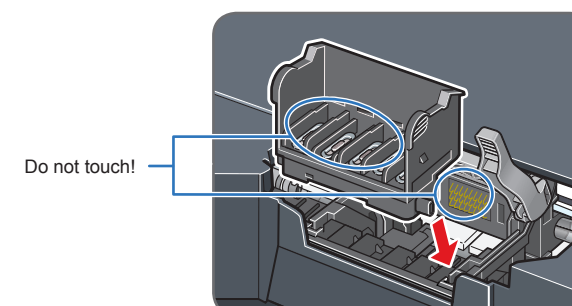
- 3 Remove the orange protective cap from the Print Head and discard it.



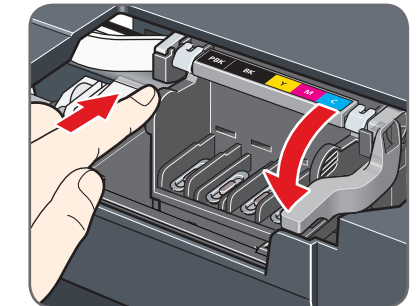
Important

Do not touch the print head nozzles or the electrical contacts.

- 4 Insert the Print Head.



- 5 Push the Print Head to hold it in place, and lower the Print Head Lock Lever.



Important

If the Scanning Unit (Printer Cover) is left open for more than 10 minutes, the Print Head Holder moves to the right. Close and reopen the Scanning Unit (Printer Cover) to return the Holder to the center.

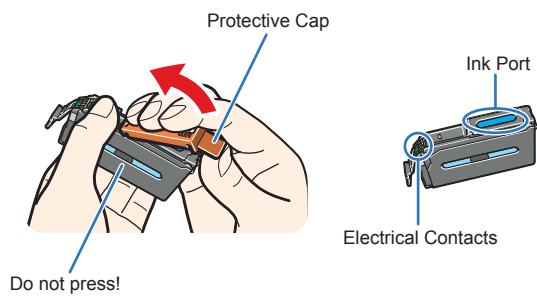
Proceed to the step 3 on the reverse side.



3 Install the Ink Tanks

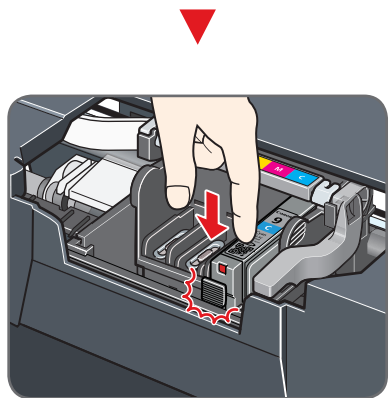
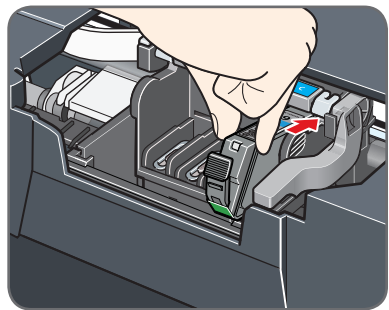
Note
For the ink tanks compatible with this machine, refer to the back cover of the *Quick Start Guide*.

- 1 Remove and discard the orange protective cap located on the bottom of the ink tank.



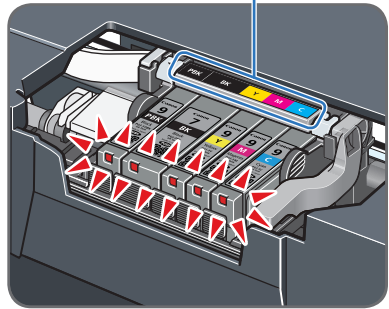
- Important**
- Do not touch the electrical contacts.
 - Do not touch the ink port.

- 2 Insert the ink tank into the right-hand slot and press the mark on the ink tank until it clicks into place. **PUSH**



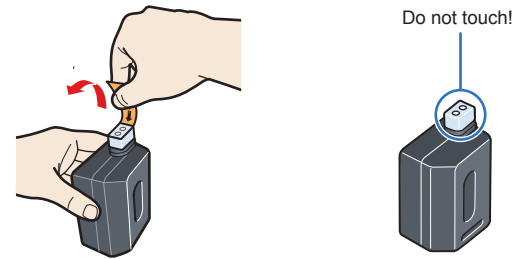
- 3 Make sure the ink lamp lights red.

Refer to the color guide on the Print Head Lock Lever.

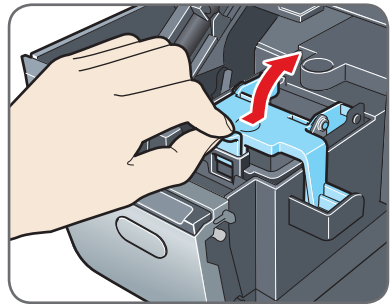


4 Install the Clear Ink Tank

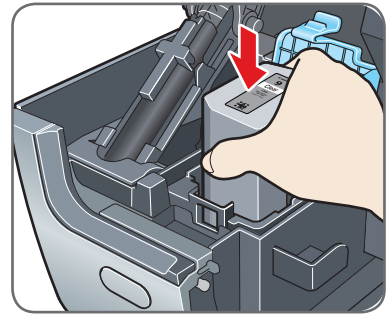
- 1 Remove the orange tape in the direction of the arrow to peel off the protective film from the clear ink tank.



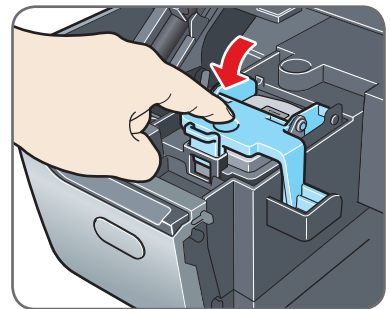
- 2 Push the tab and open the Clear Ink Tank Locking Cover.



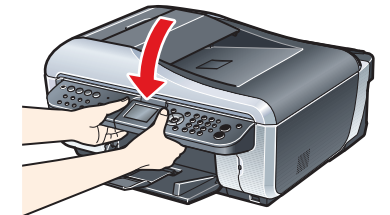
- 3 Be sure that the clear ink tank is properly aligned when inserting.



- 4 Close and press the round, indented portion on the Clear Ink Tank Locking Cover until it snaps firmly into place, locking the ink tank.



- 5 Close the Scanning Unit (Printer Cover).



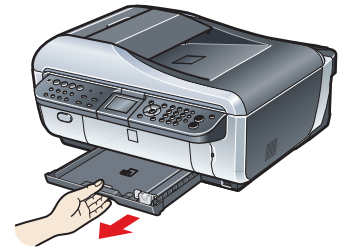
- Caution**
For your safety, always firmly grip the areas illustrated when closing the Scanning Unit (Printer Cover).

- Important**
The machine starts the preparatory operation. It takes about 2 minutes. Do not start another operation until the machine has stopped making operating noises.

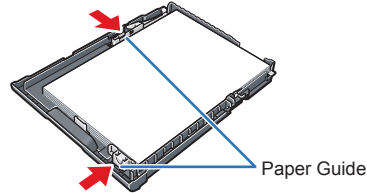
Note
If the **Alarm** lamp lights and an error message is displayed on the LCD, refer to "An Error Message Is Displayed on the LCD" in the *Quick Start Guide*.

5 Align the Print Head

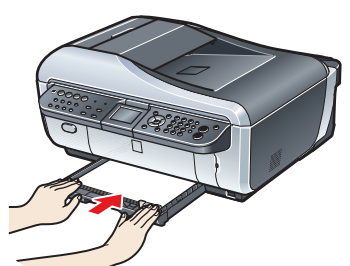
- 1 Close the Paper Output Tray and pull out the Cassette from the machine.



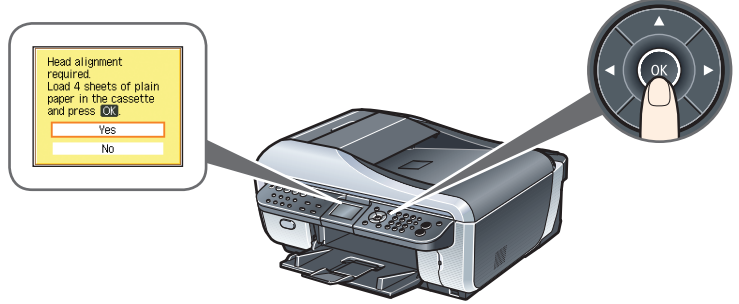
- 2 Load four sheets of plain paper in the Cassette with the printing side facing DOWN and the leading edge to the far side, align the paper stack against the right side of the Cassette, then slide the Paper Guides to fit to the loaded paper stack.



- 3 Insert the Cassette into the machine.
Push the Cassette all the way into the machine.

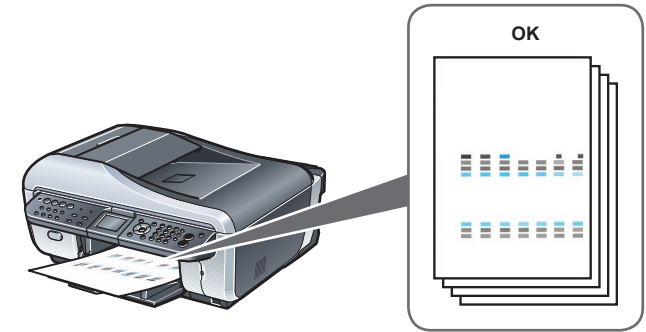


- 4 Make sure that **Yes** is selected in the message requesting head alignment, then press the **OK** button.



Note
Print Head alignment takes about 9 minutes to complete. Do not start another operation until the machine has stopped making operating noises.

The pattern is printed. And Print Head is aligned automatically.



- Note**
- The pattern is printed in black and blue.
 - When Automatic Print Head Alignment cannot be executed correctly, the message "Auto head align has failed." is displayed on the LCD. Refer to "An Error Message Is Displayed on the LCD" in the *Quick Start Guide*.

Hardware setup and Print Head alignment are complete.

For fax users

To use a fax, you need to set the telephone line type setting properly on the machine.

If you are unsure of your telephone line type, contact your telephone company.

Select the receive mode according to your needs.

- When you receive mainly faxes and sometimes voice calls:
→ FAX priority mode
- When you have a dedicated telephone line for fax use only:
→ FAX only mode
- When you receive mainly voice calls and sometimes faxes:
→ TEL priority mode
- When you subscribe to a ring pattern detection service provided by your telephone company, and you want to receive a fax only if the machine detects the pattern for fax:
→ DRPD

For details on how to confirm and change the settings, refer to the *Quick Start Guide*.

For USB connection and software installation, proceed to "2 Easy Setup Instructions for USB Connection and Software Installation."

For wired LAN connection, refer to the *Network Setup Guide*.