

MF Driver Installation Guide

User Software CD-ROM	1
About the Drivers and Software	1
Supported Operating Systems	1
Installing the MF Driver and MF Toolbox.....	2
Installing with [Easy Installation]	2
Installing with [Custom Installation].....	10
USB cable connection (Only when connecting with USB)	21
Checking the installation results.....	22
How to Use the Online Help.....	23
Confirming IP Address Settings	24
Confirming IP address settings (IPv4)	24
Confirming IP address settings (IPv6)	25
Uninstalling the Software	27
For the printer/fax/scanner driver	27
For the MF Toolbox	28

User Software CD-ROM

About the Drivers and Software

MF Driver		
Printer driver		You can print from an application using the machine by installing the printer driver to your computer. You can process print data at high speed by compressing the print data using the computer processing ability.
Fax driver (MF8350Cdn/MF8050Cn only)		If you install the fax driver to your computer, you can select "Print" from an application, select the Canon fax driver as a printer, and specify the output destination and options. The fax driver convert the data into an image that conforms to standard fax protocols so that the data can be printed or saved using the recipient's fax machine.
Scanner driver		You can use the machine as a scanner if you install the scanner driver to your computer.
Network Scan Utility		This software is required for using the scan functions via a network. The software is installed with the scanner driver.
MF Toolbox		The MF Toolbox is a program which can easily open an image scanned by the scanner in an application, attach the scanned image to an e-mail, and store the scanned image in a hard disk.
Additional Software Programs		
Presto! PageManager		This is the software to manage the scanned images.

Supported Operating Systems

○ : available

— : not available

	Windows 2000/XP	Windows Vista/7	Windows Server 2003/ Server 2008
Printer driver	○	○	○ *
Fax driver	○	○	○ *
Scanner driver	○	○	—
Network Scan Utility	○	○	—
MF Toolbox	○	○	—
Presto! PageManager	○	○	—

* Available only in the network connection.

Installing the MF Driver and MF Toolbox

Install the software to use the machine.

IMPORTANT

If you are using a 64-bit operating system

The MF driver and MF Toolbox for 64-bit operating systems may not be supplied depending on your country or region.

About the user rights for the logon to Windows

Log on as a user with administrative rights.

When installing via USB connection

Connect the USB cable after the installation of software.

Make sure that the power of the machine is turned ON when connecting the USB cable.

When installing via network connection

Before starting the installation, check the followings.

- The computer and machine are connected via the network.
- The power of the machine is turned ON.
- IP addresses are properly set up.

Installing the e-Manual

The e-Manual is not installed by selecting [Easy Installation].

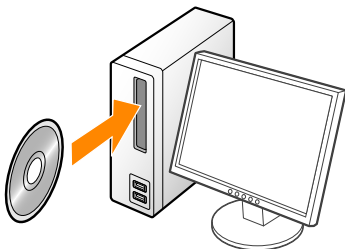
To install the e-Manual, select [Custom Installation] (See p. 10).

* If the User Manual CD-ROM is supplied with the machine, install the e-Manual from the User Manual CD-ROM.

Installing with [Easy Installation]

1

Insert the User Software CD-ROM.



2

Click [Easy Installation].

[Easy Installation] performs the installation of the following software.

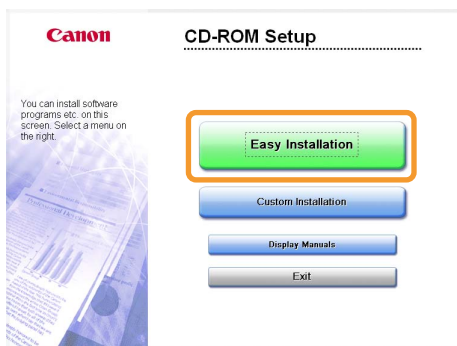
- Printer driver
- Fax driver (Only for USB connection)
- Scanner driver
- MF Toolbox

To add the following software and manual to the installation, select [Custom Installation].

- Fax driver (Only for network connection)
- Presto! PageManager
- e-Manual*

See "Installing with [Custom Installation]," on p. 10.

* If the User Manual CD-ROM is supplied with the machine, install the e-Manual from the User Manual CD-ROM.



※ The options to be displayed differ depending on your country or region.

If the above dialog box does not appear

Windows 2000, XP, and Server 2003

1. From the [Start] menu, select [Run].
2. Enter "D:\MInst.exe", and then click [OK].

Windows Vista, 7, and Server 2008

1. Enter "D:\MInst.exe" in [Start Search] or [Search programs and files] under the [Start] menu.
2. Press the [ENTER] key on the keyboard.

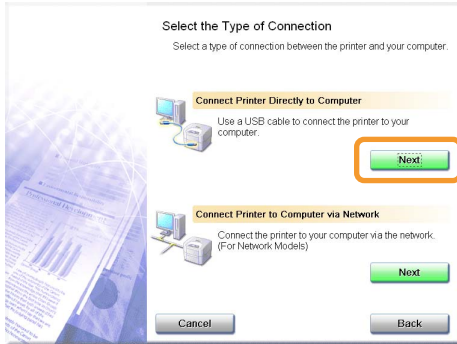
* The CD-ROM drive name is indicated as "D:" in this manual. The CD-ROM drive name may differ depending on the computer you are using.

3

Select the connection method to a computer. (Windows 2000 Professional/XP/Vista/7 Only)

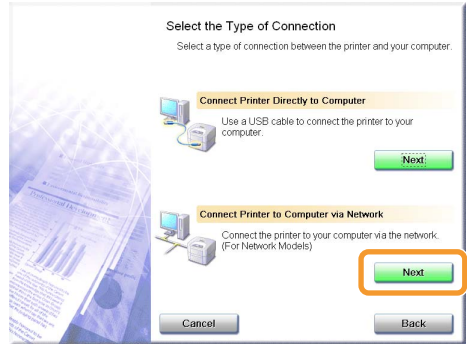
For USB Connection

Click [Next] in [Connect Printer Directly to Computer].



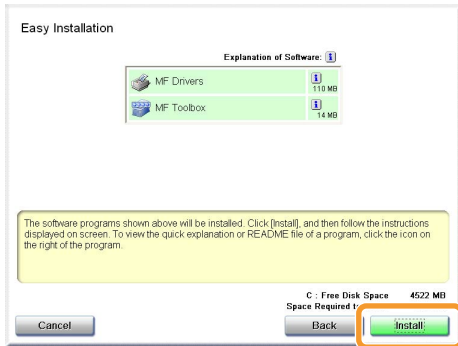
For Network Connection

Click [Next] in [Connect Printer to Computer via Network].



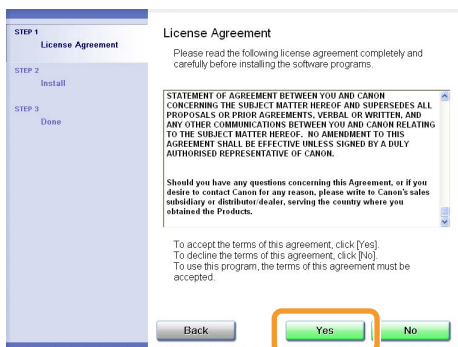
4

Click [Install].



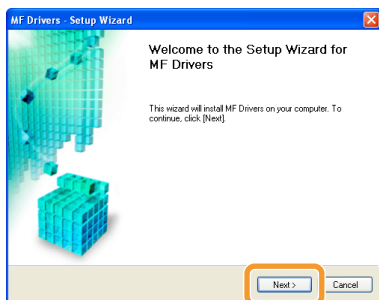
5

Read the contents of License Agreement, and then click [Yes].

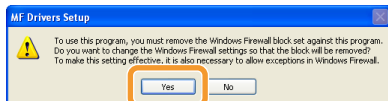


6

Click [Next].



The following screen appears. Click [Yes].



For USB Connection

Proceed to Step 9.

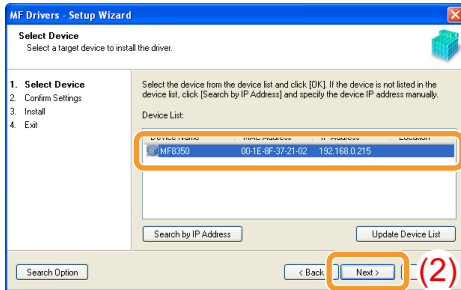
For Network Connection

Proceed to Step 7.

7

Select the device to be installed.

- (1) Select the device.
- (2) Click [Next].



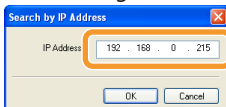
? If no devices are displayed in [Device List]

Perform the following procedure.

1. Check the following.
 - The computer and device are connected via the network.
 - The device is turned on.
 - IP address is set correctly.
 - The computer and device are on the same subnet.
2. Click [Update Device List].

If any devices are not displayed by performing the above procedure, perform the following procedure.

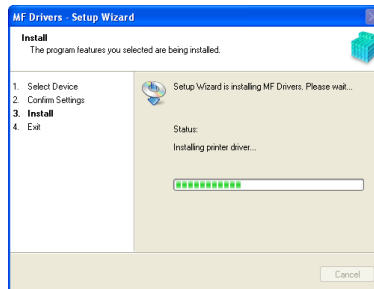
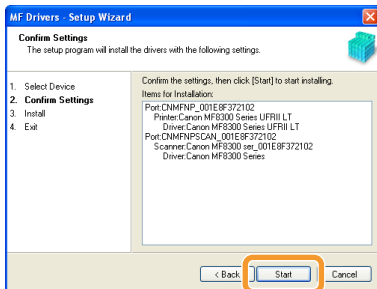
1. Click [Search by IP Address].
2. Enter the IP address of the device to be installed.
See "Confirming IP Address Settings," on p. 24.



3. Click [OK].

8

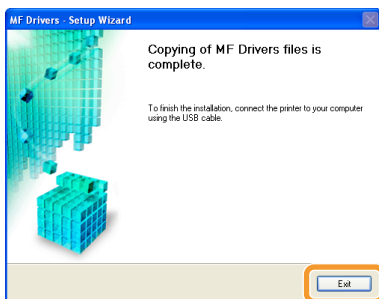
Installation starts when clicking [Start].



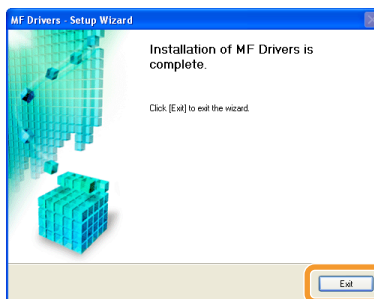
9

Click [Exit].

For USB Connection



For Network Connection

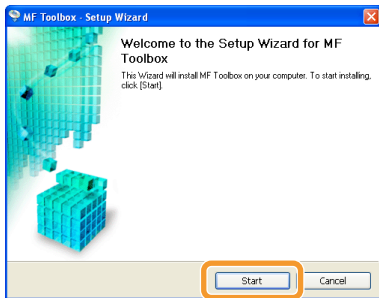


 Next, installation of the MF Toolbox starts.

※ In Windows 2000 Server/Server 2003/2008, MF Toolbox is not installed. Proceed to Step 12.

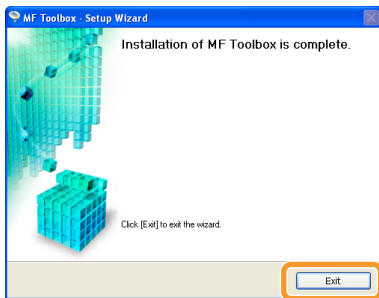
10

Click [Start].



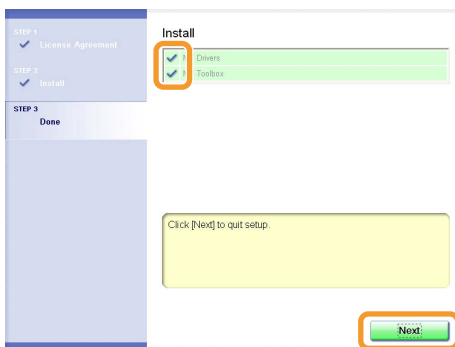
11

Click [Exit].



12

Check the [] is selected in [Install], and then click [Next].

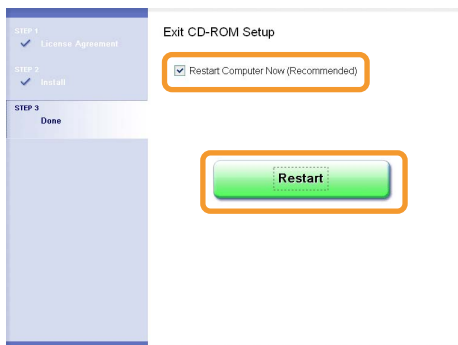


13

Restart your computer.

- (1) Select the [Restart Computer Now (Recommended)] check box.
- (2) Click [Restart].

※ If this screen appears, you can remove the CD-ROM from the CD-ROM drive.

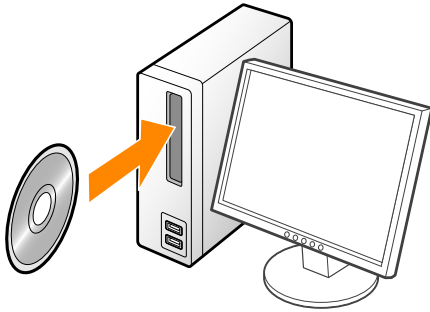


- 🔗 In case of the USB connection, connect the USB cable after restarting your computer.
See "USB cable connection (Only when connecting with USB)," on p.21.
- 🔗 In case of the network connection, check the installation results.
See "Checking the installation results," on p.22.

Installing with [Custom Installation]

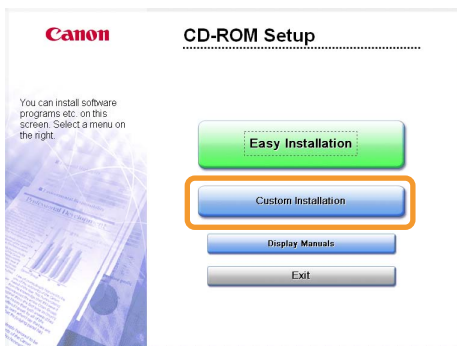
1

Insert the User Software CD-ROM.



2

Click [Custom Installation].



※ The options to be displayed differ depending on your country or region.

If the above dialog box does not appear

Windows 2000, XP, and Server 2003

1. From the [Start] menu, select [Run].
2. Enter "D:\MInst.exe", and then click [OK].

Windows Vista, 7, and Server 2008

1. Enter "D:\MInst.exe" in [Start Search] or [Search programs and files] under the [Start] menu.
2. Press the [ENTER] key on the keyboard.

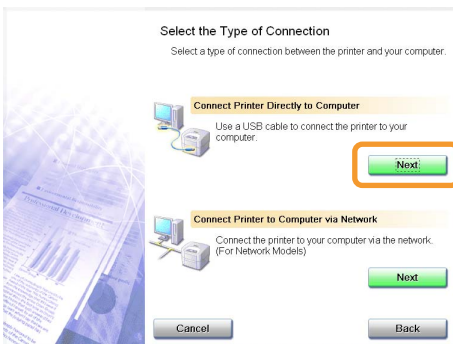
* The CD-ROM drive name is indicated as "D:" in this manual. The CD-ROM drive name may differ depending on the computer you are using.

3

Select the connection method to a computer. (Windows 2000 Professional/XP/Vista/7 Only)

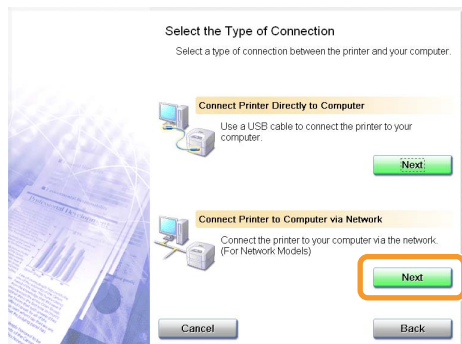
For USB Connection

Click [Next] in [Connect Printer Directly to Computer].



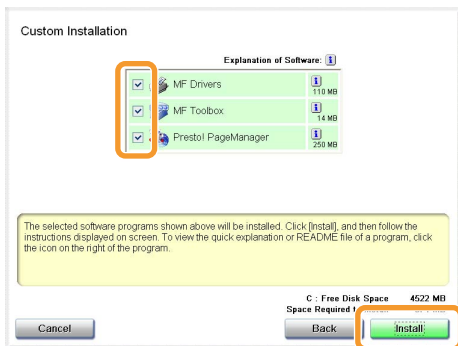
For Network Connection

Click [Next] in [Connect Printer to Computer via Network].



4

Select the check box for the software to be installed, and then click [Install].



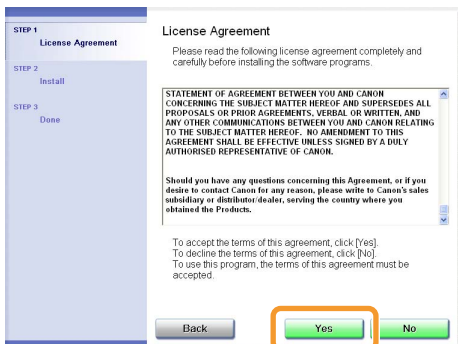
※ The options to be displayed differ depending on your country or region.

※ To install the e-Manual, select the [Manuals] check box.

* If [Manuals] does not appear, install the e-Manual from the User Manual CD-ROM supplied with the machine.

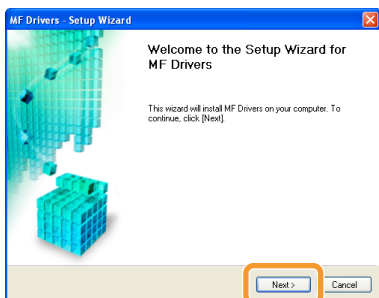
5

Read the contents of License Agreement, and then click [Yes].

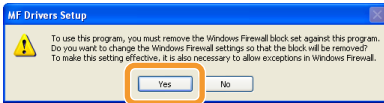


6

Click [Next].



The following screen appears. Click [Yes].



For USB Connection

Proceed to Step 13.

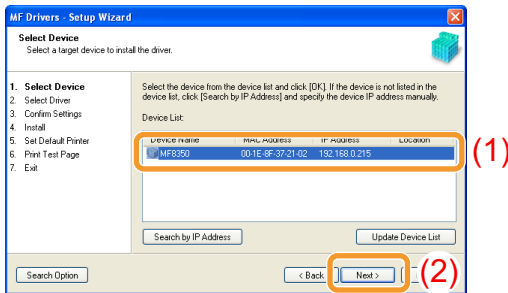
For Network Connection

Proceed to Step 7.

7

Select the device to be installed.

- (1) Select the device.
- (2) Click [Next].



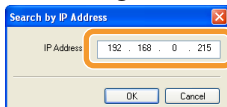
If no devices are displayed in [Device List]

Perform the following procedure.

1. Check the following.
 - The computer and device are connected via the network.
 - The device is turned on.
 - IP address is set correctly.
 - The computer and device are on the same subnet.
2. Click [Update Device List].

If any devices are not displayed by performing the above procedure, perform the following procedure.

1. Click [Search by IP Address].
2. Enter the IP address of the device to be installed.
See "Confirming IP Address Settings," on p.24.

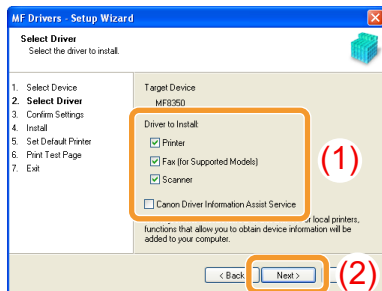


3. Click [OK].

8

Select the function you want to use.

- (1) Select the function you want to use (driver to be installed).
- (2) Click [Next].



[Printer]	Select when printing from a computer.
[Fax (for Supported Models)]	Select when sending a fax from a computer.
[Scanner]	Select when scanning documents from a computer.

[Canon Driver Information Assist Service]	<p>Select when using the computer on which the printer driver is being installed as the print server of the shared printer environment.</p> <p>By this installation, the characteristic information about the image quality can be transmitted to the client computers correctly, and the department management becomes available as well.</p>
---	--

9

Set the printer or fax information.

- (1) Specify the settings for each option as needed.
- (2) Click [Next].

Printer information *1

The screenshot shows the 'MF Drivers - Setup Wizard' window with the 'Printer' tab selected. The 'Confirm Settings' section is active. The 'Printer Name' field is highlighted with a red box and labeled (1). The 'Next >' button is highlighted with a red box and labeled (2).

Fax information *2

The screenshot shows the 'MF Drivers - Setup Wizard' window with the 'Fax' tab selected. The 'Confirm Settings' section is active. The 'Fax Name' field is highlighted with a red box and labeled (1). The 'Next >' button is highlighted with a red box and labeled (2).

*1 Appears if you selected [Printer] in Step 8.

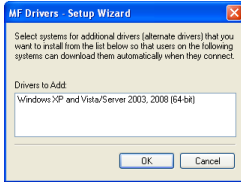
*2 Appears if you selected [Fax (for Supported Models)] in Step 8.

[Printer Name]	Enter a new name if you want to change the printer or fax name.
[Fax Name]	
[Use as Shared Printer]	Select the check box to share the printer or fax.
[Use as Shared Fax]	
[Shared Name]	Change the shared name as needed.

If you selected the [Use as Shared Printer] or [Use as Shared Fax] check box

You can use the following procedure to install the additional driver depending on your country or region.

1. Click [Drivers to Add].
2. Select the operating system displayed in [Drivers to Add].



3. Click [OK].

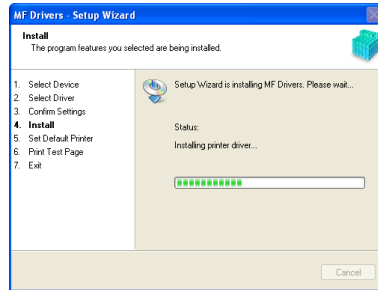
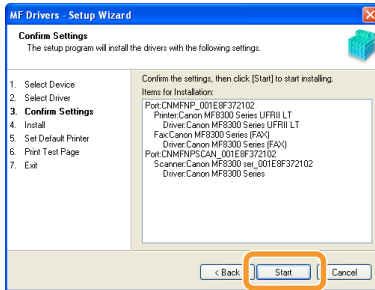
- ※ The MF driver and MF Toolbox for 64-bit operating systems may not be supplied depending on your country or region.
- ※ If a 64-bit operating system is running on a computer on which the installation is being performed, the download installation (installation from a network) for a client computer on which any of the following 32-bit operating systems is running is not supported due to the Windows restriction.
 - Windows 2000
 - Windows XP (on which no service pack or SP1 is installed)
 - Windows Server 2003 (on which no service pack is installed)

If you download and install the software on any of the above 32-bit operating systems, you may fail to install the software and may not be able to open the printing preferences dialog box.

- ※ If any of the following 32-bit operating systems is running on a computer on which the installation is being performed, the additional driver for a 64-bit operating system cannot be installed.
 - Windows 2000
 - Windows XP (on which no service pack or SP1 is installed)
 - Windows Server 2003 (on which no service pack is installed)

10

Installation starts when clicking [Start].

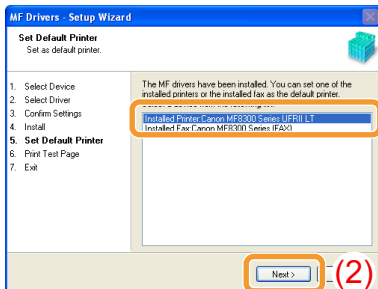


11

Select the printer used generally.

- (1) Select the printer used generally.
- (2) Click [Next].

※ This screen appears only when installing the printer driver and fax driver.

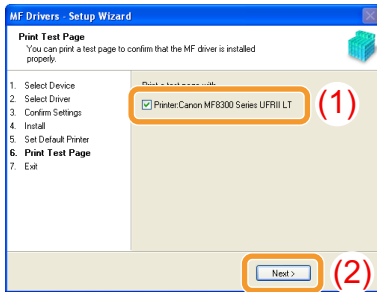


12

Select whether to print a test page.

- (1) Select the check box to print a test page.
- (2) Click [Next].

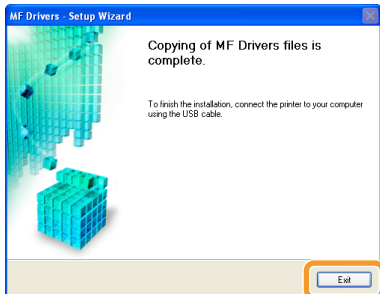
※ This screen appears only when installing the printer driver.



13

Click [Exit].

For USB Connection



For Network Connection



➡ Next, installation of the MF Toolbox starts.

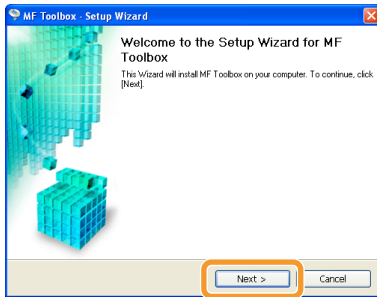
- ※ In any of the following cases, the MF Toolbox is not installed. Proceed to Step 16.
- If you are using Windows 2000 Server, Windows Server 2003, or Windows Server 2008
 - If you cleared the [MF Toolbox] check box in Step 4

14

Click [Next].

The screens for specifying a location in which the MF Toolbox is installed and position to which the start menu is added appear.


Specify the settings in the respective screens, and then click [Next]. Click [Start] in the displayed screen.



15

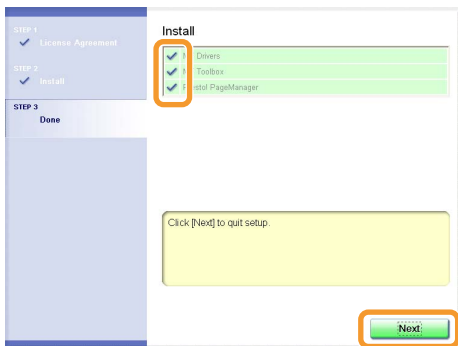
Click [Exit].



 The software for which the check box was selected in Step 4 is installed.
Follow the on-screen instructions.

16

Check the ☒ is selected in [Install], and then click [Next].



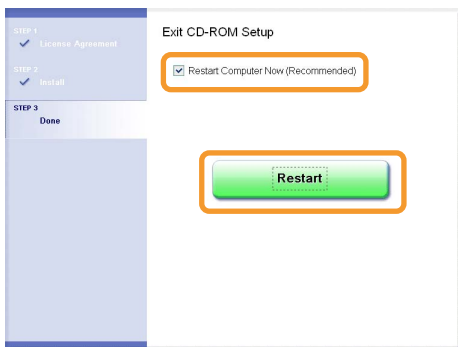
※ The options to be displayed differ depending on your country or region.


17


Restart your computer.

- (1) Select the [Restart Computer Now (Recommended)] check box.
- (2) Click [Restart].

※ If this screen appears, you can remove the CD-ROM from the CD-ROM drive.



 In case of the USB connection, connect the USB cable after restarting your computer.
See "USB cable connection (Only when connecting with USB)," on p. 21.

 In case of the network connection, check the installation results.
See "Checking the installation results," on p.22.

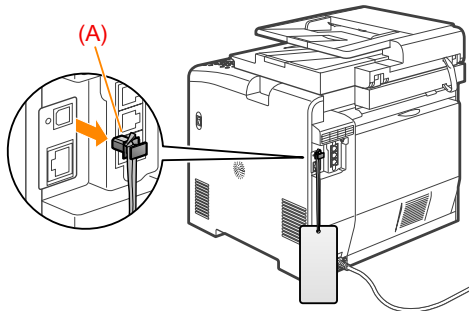
USB cable connection (Only when connecting with USB)

1

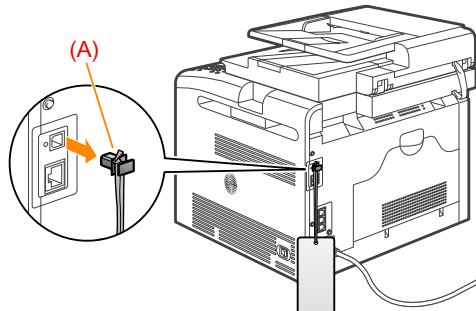
Remove the cap (A) on the USB port of the machine.

Remove the cap by pulling out the string.

MF8350Cdn/MF8330Cdn



MF8050Cn/MF8030Cn

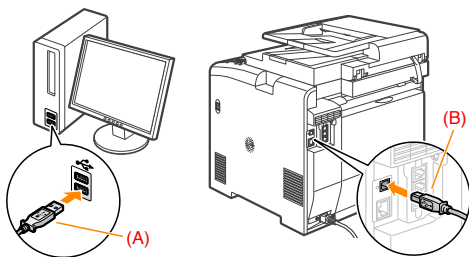


2

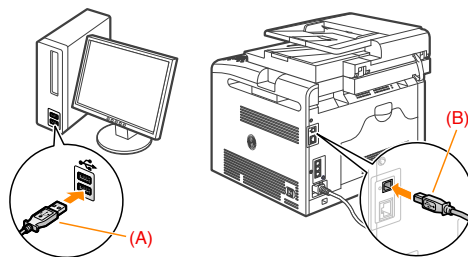
Connect the USB cable.

- Flat end (A): Connect to the USB port on the computer.
- Rectangular end (B): Connect to the USB port on the machine.

MF8350Cdn/MF8330Cdn



MF8050Cn/MF8030Cn



When the dialog box is displayed

Follow the on-screen instructions and complete the installation.



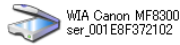



 After the installation, check the installation results.

See "Checking the installation results," on p.22.

Checking the installation results

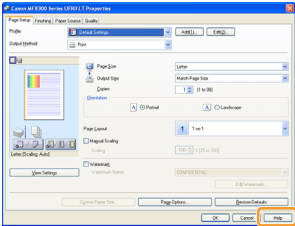
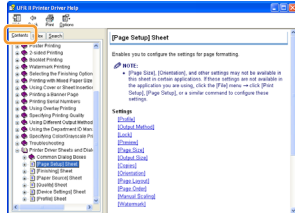
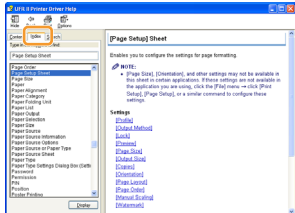
Check that MF driver and MF Toolbox are installed correctly.

Check that the icon of the installed software is added as following.

Software	Location	Icon
Printer driver	[Printers and Faxes], [Printers], or [Devices and Printers] folder.	
Fax driver (MF8350Cdn/MF8050Cn only)	[Printers and Faxes], [Printers], or [Devices and Printers] folder.	
Scanner driver	[Scanners and Cameras] or [Scanners and Cameras Properties] folder	 
MF Toolbox	Desktop	 Canon MF Toolbox 4.9
Network Scan Utility	Taskbar	

How to Use the Online Help

In the Online Help, all the functions of the driver software and information about options are included. If you want to know descriptions of the functions and settings immediately when using the driver software, make use of the Online Help.

<p>How to display the Help screen</p>	<ol style="list-style-type: none"> (1) Select [File] → [Print] from the menu bar in the application. (2) Select the printer in [Select Printer] or [Name] in the [Print] dialog box. (3) Click [Preferences] or [Properties]. (4) Click [Help] in the [Properties] dialog box. 	
<p>Searching from Contents</p>	<p>Click [Contents] in the Help screen, and then double-click the desired title to display the information.</p>	
<p>Searching with Index</p>	<p>Click [Index] in the Help screen, and then double-click the desired keyword from the list to display the information.</p> <p>To search for a desired keyword, enter the keyword directly in the above text box. The closest keyword is listed below.</p>	

Confirming IP Address Settings

NOTE

If the machine is not connected to the network properly

The IP address is not displayed.

When the startup time setting is specified

The IP address, subnet mask, and gateway address are displayed after the specified time elapsed.

» e-Manual → "Specifying the Startup Time until the Machine Is Connected to a Network"

When the machine is connected to a switching hub

The machine may not be able to connect to a network even though your network settings are appropriate. In this case, the startup time of the machine needs to be waited.

» e-Manual → "Specifying the Startup Time until the Machine Is Connected to a Network"

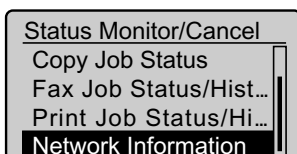
Confirming IP address settings (IPv4)

1

Press [] (Status Monitor/Cancel).

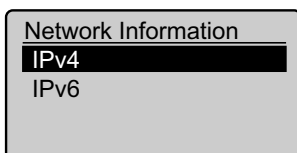
2

Select <Network Information> with [▲] or [▼], and then press [OK].



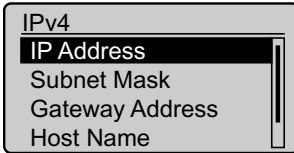
3

Confirm that <IPv4> is selected, and then press [OK].



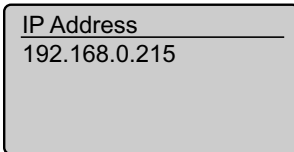
4

Select the options you want to check with [▲] or [▼], and then press [OK].

A screenshot of a menu titled "IPv4". It contains four options: "IP Address", "Subnet Mask", "Gateway Address", and "Host Name". The "IP Address" option is highlighted with a black background and white text. A vertical scrollbar is visible on the right side of the menu.

5

Confirm the contents.

A screenshot of a confirmation screen. It has a title "IP Address" and a text field containing the IP address "192.168.0.215".

NOTE

If the IP address displayed on the screen is between "169.254.1.0 and 169.254.254.255"

This IP address is the one assigned by the AutoIP function.

If an IP address other than link-local addresses is set for the computer, set an IP address in the same subnet as the computer (other than link-local addresses) also for this machine manually.

This enables the installer to search for this machine.

» e-Manual → "Setting IPv4 Address"

» e-Manual → "Setting IPv6 Address"

6

Press [☐] (Status Monitor/Cancel), then close the screen.

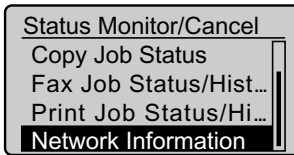
Confirming IP address settings (IPv6)

1

Press [☐] (Status Monitor/Cancel).

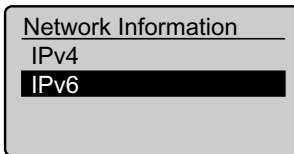
2

Select <Network Information> with [**▲**] or [**▼**], and then press [OK].



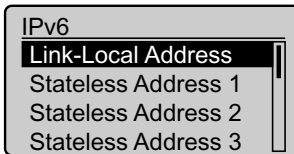
3

Press [**▼**] to select <IPv6>, and then press [OK].



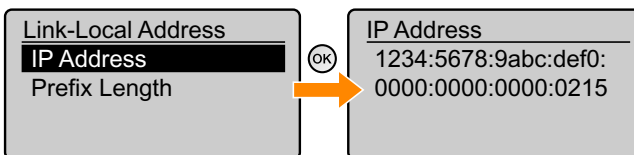
4

Select the options you want to check with [**▲**] or [**▼**], and then press [OK].



5

Confirm the contents.



6

Press [☐] (Status Monitor/Cancel), then close the screen.

Uninstalling the Software

When you do not need the printer driver, fax driver, scanner driver, or MF Toolbox, you can uninstall it using the following procedure.



IMPORTANT

Confirm the following before performing the uninstallation.

- That you must be the user with administrative privileges
- That you have the installation software (if you want to re-install the drivers)
- That no applications are running on your computer

For the printer/fax/scanner driver

1

From the [Start] menu, click [(All) Programs] → [Canon] → [MF8300] (or [MF8000]) → [Uninstall Drivers].

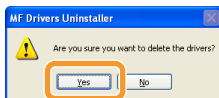
2

Click [Delete].



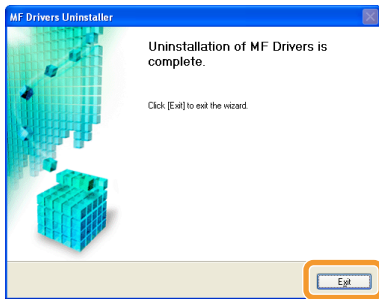
3

Click [Yes].



4

Click [Exit].



For the MF Toolbox

1

From the [Start] menu, click [(All) Programs] → [Canon] → [MF Toolbox 4.9] → [Toolbox Uninstall].

2

Click [Remove].



3

Click [Exit].

