





Stylish! Easy! Effective!
Canon Compact PhotoPrinter SELPHY Series.

Want to print right away? Want to print with the kids? Want to print without a PC?
Now you can print great photos anywhere. Just connect your camera, that's it!

SELPHY ES Series

The color of the printer may differ depending on the region.



SELPHY CP Series

1

Connect

Connect the camera to a SELPHY printer using the USB cable that came with your Canon camera, and turn them both on.



3

Print

Make sure you select [Print] on the camera's screen and press the FUNC./SET button.

* If you press the FUNC./SET button during printing, printing stops.



2

Select

Select the photo you wish to print and press the FUNC./SET button.

* Press the FUNC./SET button twice for certain models.

See next page for detailed settings. →




! If an error message appears...

Follow the on-screen instructions

- If [File Error] appears, you have selected a photo that is not printable. Photos from other cameras or images that have been altered using computer software may not be printable.
- If [Print error] appears, turn the printer off and on again and repeat the setting.

For troubleshooting details, see the *Printer User Guide*.

When using a camera with touchscreen operations:

After choosing an image to print, touch FUNC., then touch . Touch [Print] on the screen that appears to print.

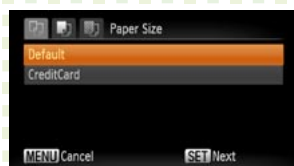


Select the paper size and layout you want for your prints.

1 Select [Paper Settings]



2 Select paper size



3 Press the FUNC./SET button



4 Select layout



- A Print using the set-up on the printer
- B With borders
- C Borderless
- D Print multiple photos on one sheet
- E Print ID photos
- F [Fixed Size] Select print size

* [ID Photo] can only be selected when the images were shot in the camera's L (Large) recording pixel setting.

* [Fixed Size] can be selected in L, Postcard, and Wide size only.



Manage your photos with dates and numbers.
Better prints with special print effects.
Select number of prints to share with friends.



- G Date and photo number
- H Optimized printing through the use of camera info and red-eye correction
- I Number of prints

* When photos were taken with dates embedded, select [Off] for G.



* When [Default] is selected, printing uses the settings on the printer.



Trim images for better looking photos.

1 Select [Trimming]



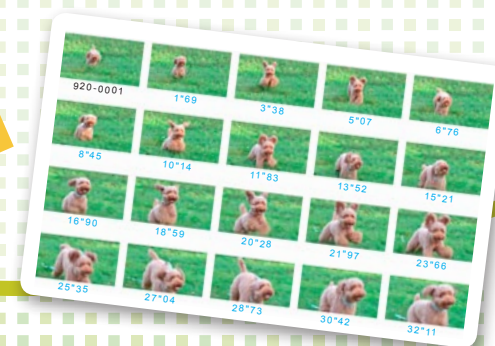
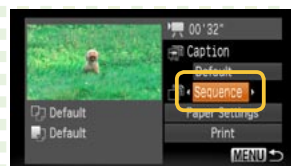
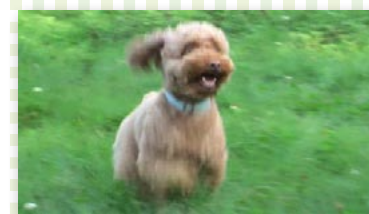
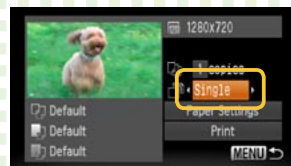
2 Set printing area



- To change size of frame: use Zoom lever or Zoom button
- To move frame: use ▲▼◀▶ buttons or drag the frame
- To rotate frame: press the DISP. or SET button, or turn the Control Dial* or touch [DISP.]
- Set trimming area: press the SET or MENU button*, or touch [OK]
- * Operation differs depending on camera models. Follow the instructions shown on the bottom part of the screen.

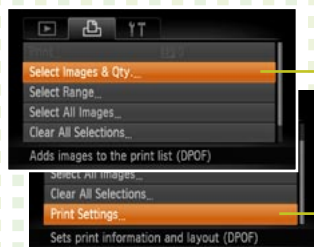
* Images smaller than 640X480 pixels cannot be trimmed.
* Trimming photos with embedded dates may not show the dates properly.

Select your favorite images from movies and print.



Print all the photos you select on one sheet (DPOF).
Image data management is easy with indexed prints!

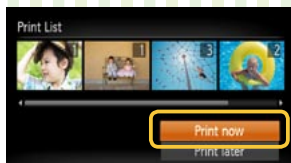
1 Select photos on camera



Select photos to print



2 Connect the camera to the printer



Change print settings



* Select photos by pressing the MENU button and using the tab. See the *Camera User Guide* for details.



Printing directly from a memory card is easy too.



By inserting a memory card in a SELPHY, you can enjoy layout printing, tone adjustment (My Color), automatic image adjustment, and other functions. With the SELPHY ES series, you can add frames around photos, insert stamp patterns and speech balloons, or make calendars.

* What you can do depends on the printer model. See the Canon website or product brochures for details.



You can print with many types of paper from business cards to A4 with Canon Inkjet Printers (PIXMA Series)

You can print on many types of paper with various size and layout options. You can also copy and scan with very versatile all-in-one printers.

* What you can do depends on the printer model.
See the Canon website or product brochures.



You can use many types of paper to print.



Full range of image correction and printing effects!



- | | |
|-----------|----------------------------------------------------|
| Default | : Print with printer settings |
| On | : Automatically adjusts for optimized settings |
| Off | : No printing correction |
| Face | : Lightens up faces when back-lit |
| Vivid | : Greener leaves on trees and bluer seas and skies |
| NR | : Noise reduction |
| Vivid+NR | : Both [Vivid] and [NR] On |
| Red-Eye 1 | : Correct red-eyes |
| Red-Eye 2 | : All [NR], [Face] and [Red-Eye 1] On |

! If an error message appears...

Follow the instructions as they appear on screen

- * If [File Error] appears, you have selected a photo that is not printable. Photos from other cameras or images that have been altered using computer software may not be printable.
 - * If [Print error] appears, check the paper size settings.
If this message appears when the settings are correct, turn the printer off and on again.
 - * If [Ink absorber full] appears, contact Canon Customer Service for an ink absorber replacement.
- If the Error light on the printer is blinking or an error message appears, be sure to check the *Printer User Guide*.