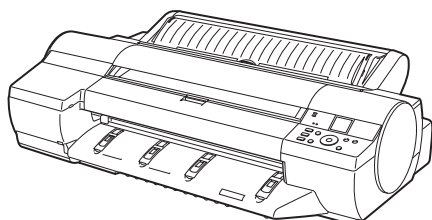


Large-Format Printers imagePROGRAF iPF6300/iPF6350

Basic Guide



Printer Relocation

Printer Driver Installation

3

1 2

This Basic Guide includes three booklets.

Be sure to read "▲Safety Precautions" in the first booklet, **1**Printer Operations.

Printer Operations

1

▲Safety Precautions.....	2
Types of Manuals	5
Documentation Conventions	6
Parts	8
Loading Rolls on the Roll Holder	14
Loading Rolls in the Printer	16
Removing the Roll from the Printer	18
Loading Sheets in the Printer	20
Removing Sheets	25
Consumables.....	27
Replacing Ink Tanks	28
Replacing the Maintenance Cartridge	32
Replacing the Printhead	36
Menu Map.....	41

Troubleshooting

2

Troubleshooting	2
If Roll Paper Jams	18
If a Sheet Jams.....	21
If Paper is Soiled	23
If Printing is Faint.....	25
If Vertical Lines are Warped or Colors are Misaligned	26
If Banding Occurs	28
If Line Length Does Not Match	30
Error Messages	32

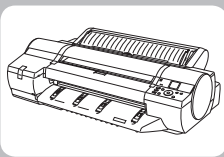
Printer Relocation

3

Preparing to Transfer the Printer	2
Reinstalling the Printer	6

Printer Driver Installation

Installing the Printer Driver (Windows)	9
Installing the Printer Driver (Mac OS X)	11
Convenient Printer Driver Features	13



Preparing to Transfer the Printer

Prepare to transfer the printer as follows.

To protect the internal parts in transit, always follow these steps before transferring the printer to a new location. Refer to the Setup Guide for details on packing the printer and installing it after transfer.



Important

- Be sure to contact your Canon dealer before transferring the printer to a new location. Ink may leak and damage the printer if you do not prepare the printer correctly and it is tipped or stood on end in transit.



MEMO

- It is not possible to prepare the printer for transfer if the **Display Screen** requests you to replace the Maintenance Cartridge or check the remaining capacity. Replace the Maintenance Cartridge before transfer preparations. In this case, you will need one new Maintenance Cartridge.
(→ **1**, Replacing the Maintenance Cartridge)
- Depending on the state of the printer, part replacement may be necessary when preparing to transfer the printer (that is, when you execute the printer menu item to prepare for transfer).

Remove paper

1

Remove the paper.

Rolls: (→ **1**, Removing the Roll from the Printer)

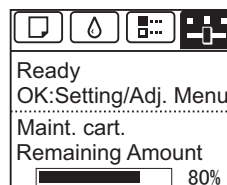
Sheets: (→ **1**, Removing Sheets)

Access the Prep.MovePrinter menu

1

On the **Tab Selection screen** of the **Control Panel**, press

◀ or ▶ to select the **Settings/Adj. tab** ().



MEMO

- If the **Tab Selection screen** is not displayed, press the **Menu** button.

2

Press the **OK** button.

The **Set./Adj. Menu** is displayed.

3

Press ▲ or ▼ to select **Prep.MovePrinter**, and then press the **OK** button to display the confirmation screen.

4

Press ▲ or ▼ to select **Yes**, and then press the **OK** button.

Once preparations are finished, a message on the **Display Screen** requests you to open the **Ink Tank Cover**.



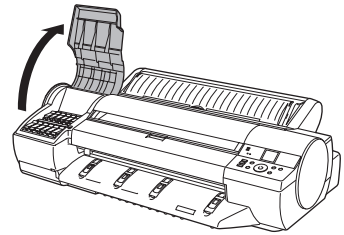
Important

- If consumables must be replaced, the message **Consumables must be replaced. Call for service.** is shown on the **Display Screen** and preparation is not possible. If this message is displayed, press the **OK** button and contact your Canon dealer for assistance.

Remove the ink tanks

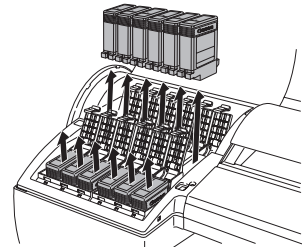
1

Open the **Ink Tank Cover**.



2

Lift the ink tank lock levers and remove all ink tanks.

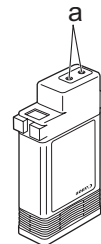


Put the ink tanks in a plastic bag and seal it.

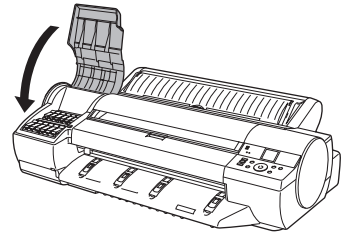


MEMO

- Store the ink tanks you removed with the ink holes (a) facing up. Otherwise, ink may leak and cause stains.



- 3** Close all ink tank lock levers, and then close the **Ink Tank Cover**.



At this point, ink is drawn out from inside the tubes.



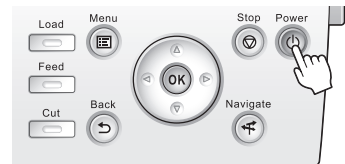
Important

- Do not remove the Maintenance Cartridge during this process.

When the process is finished, **Completed! Turn Power Off!!** is displayed.

Pack the printer

- 1** Press the **Power** button and turn off the printer.

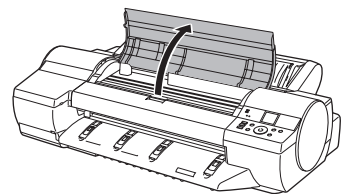


Important

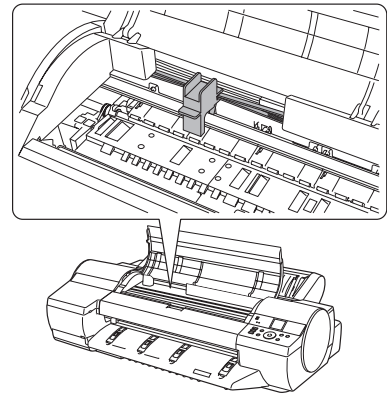
- Turn off the printer before you unplug it. It may damage the printer if you unplug it before it is off and transfer it in that state. If you accidentally unplug the printer, plug it in again, reinstall the ink tanks, and follow this procedure again.

- 2** Disconnect the power cord and interface cable.

- 3** Open the **Top Cover**.

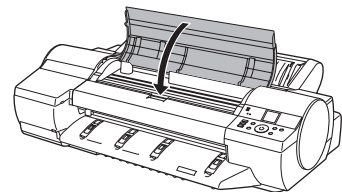


- 4 Pinch the **Belt** together, insert it between the **Belt Stopper**, and affix the **Belt Stopper** to the **Carriage Shaft**.



- Here, the **Belt Stopper** is the one that was removed and stored after initial installation.

- 5 Close the **Top Cover**.



- 6 Tape down printer covers to secure them, in the reverse order of tape removal during installation.

- 7 Repack the **Roll Holder**, **Holder Stopper**, and printer in shipping materials, and then package them in a shipping box.



Reinstalling the Printer

The basic workflow for reinstalling the printer is as follows.
For detailed instructions, see the Setup Guide.

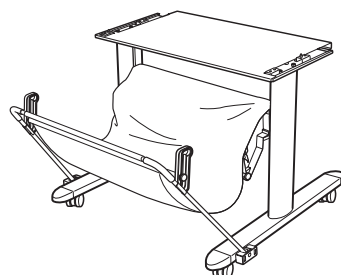
Assemble the stand (optional)



Caution

- The **Stand** must be assembled by at least two people on a flat surface. Attempting assembly by yourself poses a risk of injury or bending the **Stand**.
- When assembling the **Stand**, lock the casters.
In addition, always unlock the casters before moving the assembled **Stand**. Attempting to move the stand when the casters are locked poses a risk of injury or damage to the location site.

Referring to the Printer Stand Setup Guide, assemble the **Stand**.

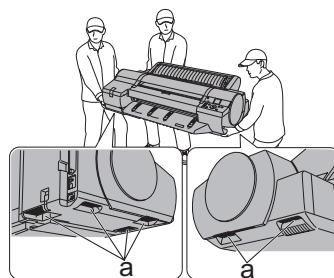


Install the printer



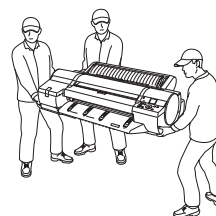
Caution

- Because the printer weighs 51 kg (112.4 lb), moving it requires at least three people, holding it firmly by the **Carrying Handles** (a) on both sides under the printer.



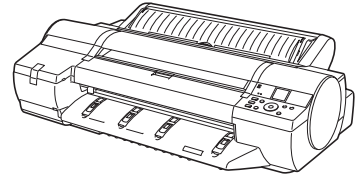
Install the printer on a table or other flat surface.

If you will use the printer on an optional **Stand**, assemble the **Stand** before mounting the printer on it, and then secure it with the **Main Unit Securing Bolts**.



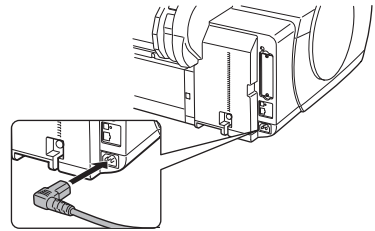
Remove the packaging material

Remove tape and packaging material attached to the printer.



Connect the power cord

Connect one end of the power cord to the **Power Supply Connector** on the back of the printer and plug the other end into the outlet.



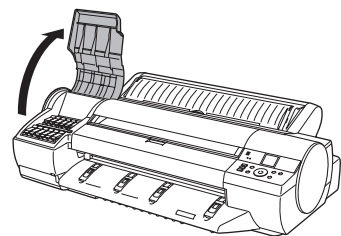
Turn the printer on

Press the **Power** button to turn the printer on.



Install the ink tanks

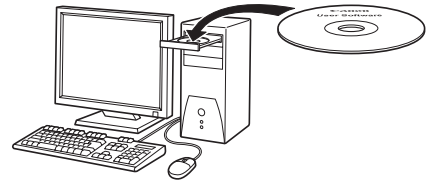
Open the **Ink Tank Cover** and install the ink tanks.



Install the printer driver and manual

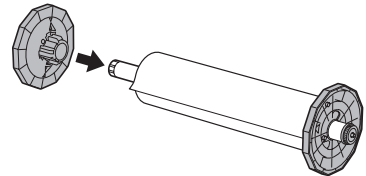
Note that the driver installation procedure varies depending on the type of connection.

- (→ **3**, Installing the Printer Driver (Windows))
- (→ **3**, Installing the Printer Driver (Mac OS X))



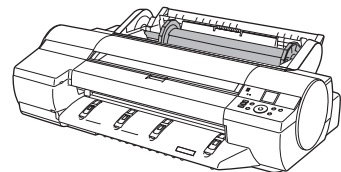
Load rolls on the roll holder

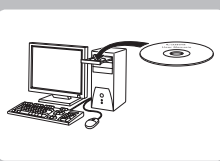
Load the Roll Media on the **Roll Holder**.
(→ **1**, Loading Rolls on the Roll Holder)



Load rolls in the printer

Load the Roll Media in the printer.
(→ **1**, Loading Rolls in the Printer)





Installing the Printer Driver (Windows)

The basic instructions for installing the printer driver are as follows.
For detailed instructions, see the Setup Guide.

Compatible operating systems

Windows 7, Windows Vista, Windows Server 2008, Windows Server 2003, Windows XP, and Windows 2000

Supported connection methods

The printer driver works over USB or network (TCP/IP) connections.
The driver installation procedure varies depending on the type of connection.
Follow these steps to install the printer driver and User Manual.

Installing the printer driver and user manual



Important

- When setting up a USB connection, connect the USB cable during printer driver installation following the instructions displayed.
If you accidentally connect the USB cable first, the printer driver may not be installed correctly.
- When the printer is connected to a network (via TCP/IP), the printer's IP address may be changed if you reinstall the printer. In this case, be sure to reconfigure the printer's IP address.

1 Turn the computer on.
When setting up a TCP/IP (network) connection, after making sure the printer is on, connect the LAN cable to the Ethernet port on the back of the printer and to your network hub port.

2 Insert the provided User Software CD-ROM for the appropriate operating system in the CD-ROM drive.

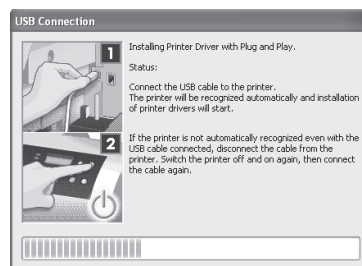


3 Follow the instructions displayed to complete installation.

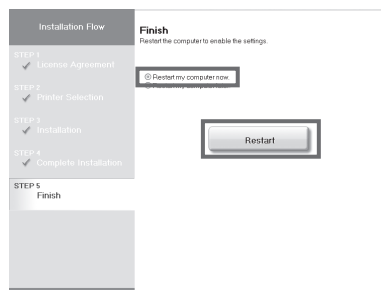


Important

- For USB connections, when the dialog box at right is displayed, make sure the printer is on and connect the printer and computer with the USB cable.

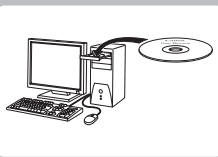


4 On the **Finish** window, select **Restart my computer now** and click **Restart**. Printer driver settings take effect after the computer restarts.



Next, install the User Manual.

5 When the **Install User Manual** dialog box is displayed, insert the provided **User Manuals CD-ROM** in the CD-ROM drive and follow the instructions displayed to complete installation.



Installing the Printer Driver (Mac OS X)

The basic instructions for installing the printer driver are as follows.
For detailed instructions, see the Setup Guide.

Compatible operating systems

Mac OS X 10.3.9 or later

Supported connection methods

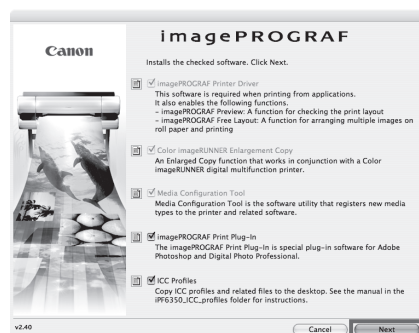
The printer driver works over USB or network (Bonjour or IP) connections.
Follow these steps to install the printer driver and user manual.

Installing the printer driver and user manual



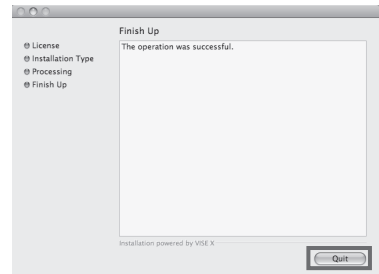
- When the printer is used over a network, the printer's IP address may be changed if you reinstall the printer. In this case, be sure to reconfigure the printer's IP address.

- 1 After confirming the printer is on, connect the printer to your computer or the network.
- 2 Turn the computer on.
- 3 Insert the provided User Software CD-ROM for the appropriate operating system in the CD-ROM drive.
- 4 Follow the instructions displayed to complete installation.

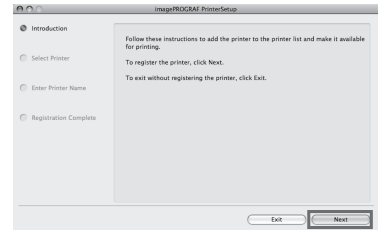


5 After installation, click **Quit**.

Installation of the printer driver is now finished.
Next, register the printer to set up.

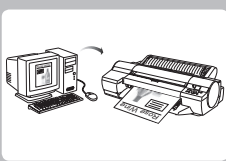


6 Click **Next** and follow the instructions displayed to register the printer to set up and update the paper information.



Next, install the user manual.

7 Insert the provided **User Manuals CD-ROM** in the CD-ROM drive and follow the instructions displayed to complete installation.



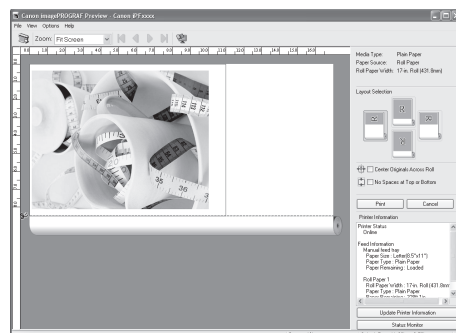
Convenient Printer Driver Features

This section summarizes some convenient features of the printer driver.
For detailed printer driver instructions, see the User Manual.

Print Preview

Using the print preview function enables the following.

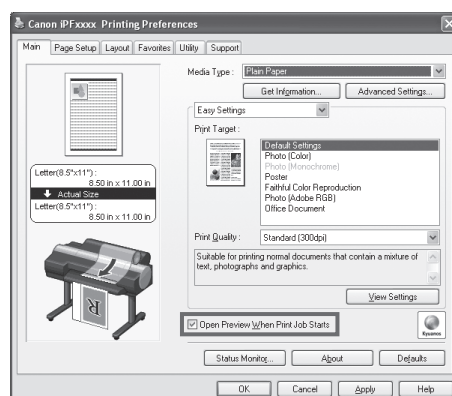
- Check an image of the document as arranged on the paper, in the position it will be printed.
You can reduce printing costs by checking how documents will be printed beforehand, without the need to print them.
- Change the layout orientation relative to the paper.
You can save paper by correcting the direction in which the document is arranged on the paper, if necessary.



Instructions in Windows and Mac OS

Windows

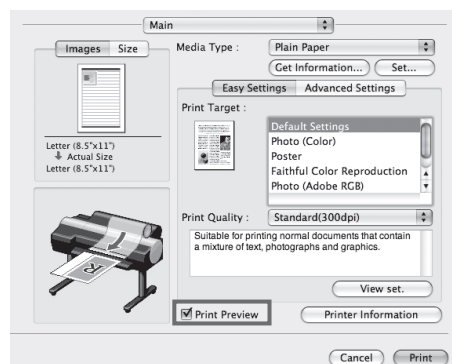
- Access the **Main** sheet.
- Select the **Open Preview When Print Job Starts** check box.
Check details in the **Information** dialog box displayed next and click **OK** to close the **Information** dialog box.
- After you click **OK**, when you print a job, the **imagePROGRAF Preview** window will be displayed.



- Under some settings and in some environments, **PageComposer** may be started.

Mac OS X

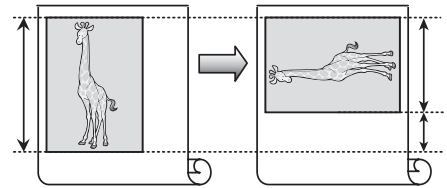
- In the **File** menu of the source application, choose the appropriate menu item for printer settings to display the **Print** dialog box.
- Access the **Main** pane.
- Select the **Print Preview** check box.
- After you click **Print**, the **Canon imagePROGRAF Preview** window will be displayed.



Rotate Page 90 degrees (Conserve Paper)

You can conserve roll paper by specifying particular settings as suitable for your original.

When originals are printed in portrait orientation, the original is rotated 90 degrees before printing if it fits within the roll width. This enables you to conserve paper.

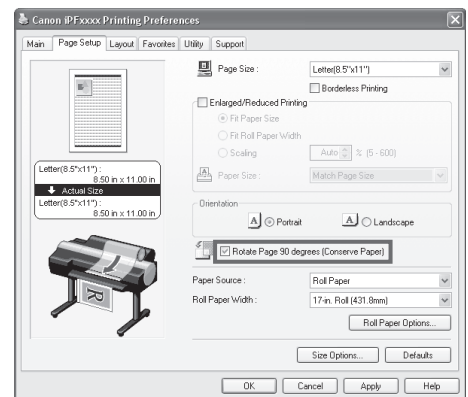


- If the page would exceed the roll paper width after rotation, you can use this function with Scale to fit Roll Paper Width to print rotated pages.

Instructions in Windows and Mac OS

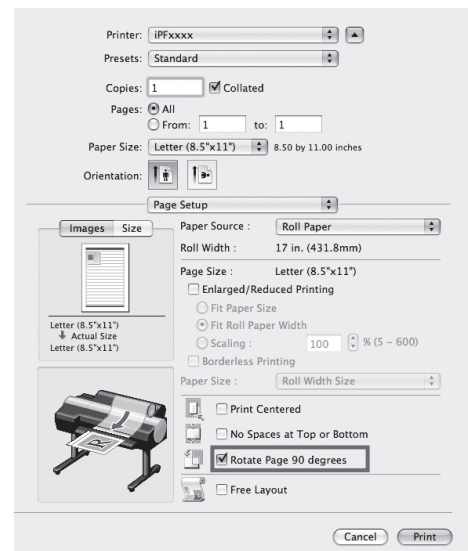
Windows

- Access the **Page Setup** sheet.
- Select the **Rotate Page 90 degrees (Conserve Paper)** check box.



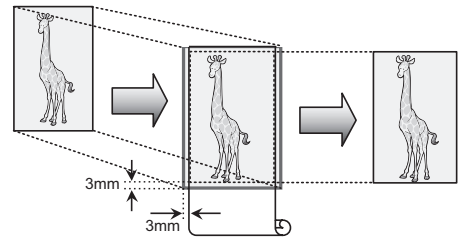
Mac OS X

- Access the **Page Setup** pane.
- Select the **Rotate Page 90 degrees** check box.



Borderless Printing

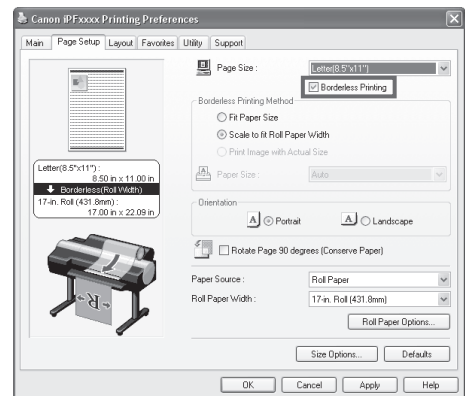
In regular printing, a margin required by the printer is added around the original. With borderless printing, you can print documents without the margin, so that the printed image covers the entire surface of the paper.



Instructions in Windows and Mac OS

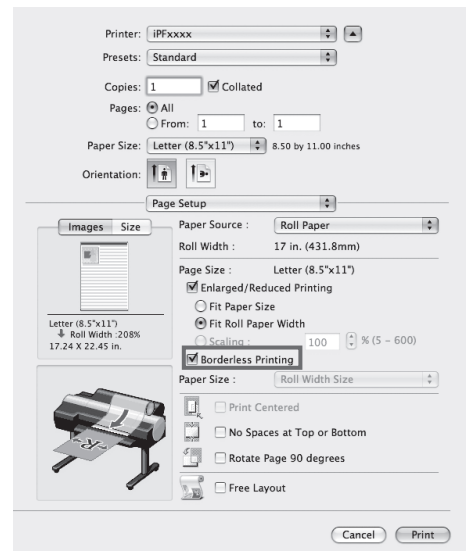
Windows

- Access the **Page Setup** sheet.
- Select the **Borderless Printing** check box to display the **Information** dialog box.
- Click the width of the loaded roll in the **Roll Paper Width** list.
- Click **OK** to close the **Information** dialog box.
- Select **Fit Paper Size**, **Scale to fit Roll Paper Width**, or **Print Image with Actual Size**.



Mac OS X

- Access the **Page Setup** pane.
- Select the **Enlarged/Reduced Printing** check box.
- Select the **Borderless Printing** check box.
- Select either **Fit Paper Size** or **Fit Roll Paper Width**.



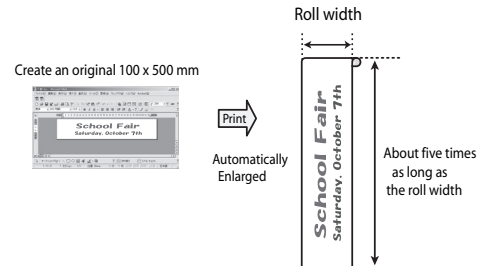
- Borderless printing is possible when the **Page Size** setting matches the size of paper loaded in the printer and you select **XXXX-Borderless** (where XXXX is the size of the original) in **Paper Size** in the **Page Attributes** dialog box. (Mac OS X only)

Large-Format Printing

You can create vertical or horizontal banners by printing originals in banner formats on rolls.

Originals created in Microsoft Word or other applications in your preferred size can be enlarged to fill the width of roll paper by completing simple printer driver settings.

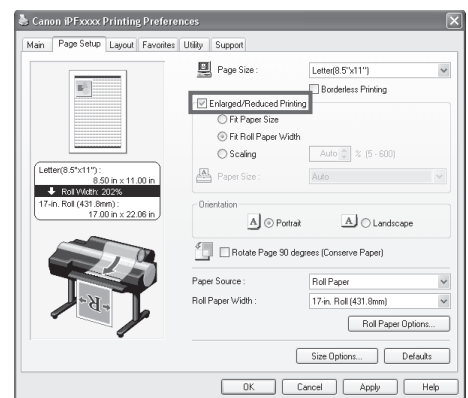
The printer supports roll printing up to a maximum length of 18.0 m (19.7 yd).



Instructions in Windows and Mac OS

Windows

- Access the **Page Setup** sheet.
- Click **Size Options** and register the original size.
- Select the **Enlarged/Reduced Printing** check box.
- After you click **Fit Roll Paper Width**, the **Information** dialog box is displayed.
- Click the width of the loaded roll in the **Roll Paper Width** list, and then click **OK**.

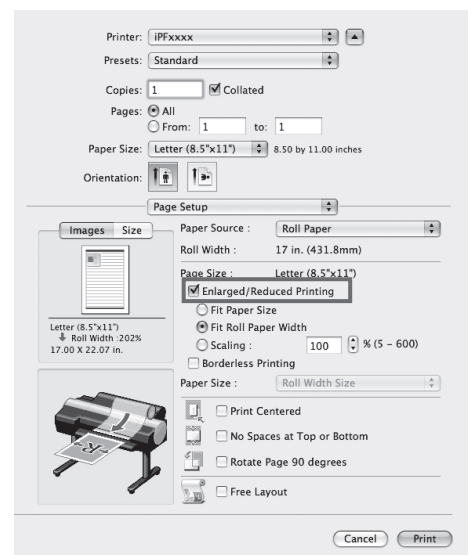


Mac OS X

- Access the **Page Setup** pane.
- Make sure the width of the loaded roll is displayed in **Roll Width**.
- Make sure the size of the original you have prepared is displayed in **Page Size**.

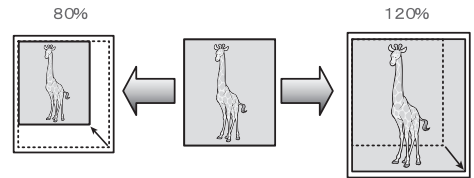
If you have not registered a size in **Custom Paper Sizes**, resize the original to fit the roll width.

- Select the **Enlarged/Reduced Printing** check box.
- Click **Fit Roll Paper Width**.



Enlarged/Reduced Printing

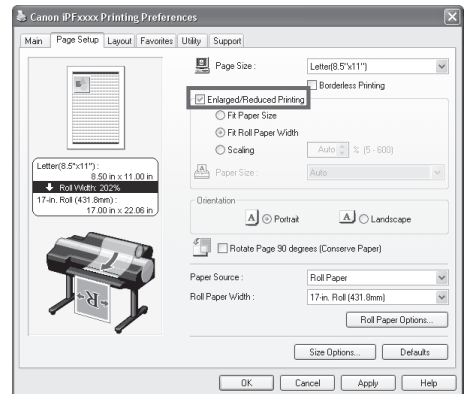
Originals can be printed at larger or smaller sizes, as desired.



Instructions in Windows and Mac OS

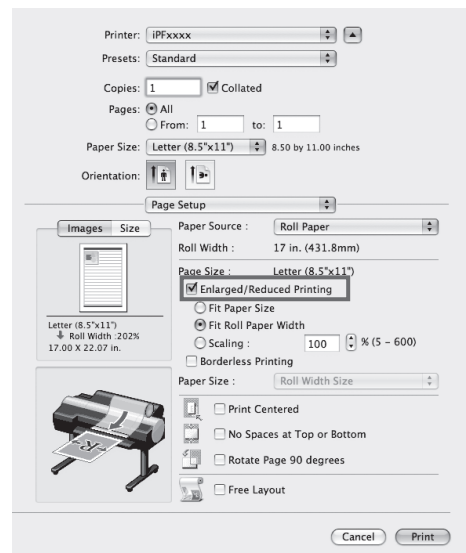
Windows

- Access the **Page Setup** sheet.
- Click the width of the loaded roll in the **Roll Paper Width** list.
- In the **Page Size** list, click the size of the original as specified in the source application.
- Select the **Enlarged/Reduced Printing** check box.
- Select **Fit Paper Size**, **Fit Roll Paper Width**, or **Scaling**.



Mac OS X

- Access the **Page Setup** pane.
- Make sure the width of the loaded roll is displayed in **Roll Width**.
- Make sure the size of the original you have prepared is displayed in **Page Size**.
- Select the **Enlarged/Reduced Printing** check box.
- Select **Fit Paper Size**, **Fit Roll Paper Width**, or **Scaling**.



Other Methods of Printing: Printing from Print Plug-Ins

Using print plug-ins, you can print directly from applications such as Adobe Photoshop and Digital Photo Professional.

The main features of Print Plug-In are as follows.

- This software can automatically recognize the color space of images for sRGB and Adobe RGB and can automatically set those images to an optimum profile. Thus, printing of Adobe RGB is made possible without performing tedious settings.
- This software can directly process image data on Adobe Photoshop, and can send that image data to the printer. This allows processing not only RGB8bit image data, but also RGB16bit image data.
- Loss of gradation in dark areas can be reduced by performing black point compensation.
- You can perform printing press simulation printing by specifying the printing press profile.



- For Print Plug-In details, see the user manual.
- **Print Plug-In for Office** is also included, for easy large-format printing from Microsoft Office applications. For detailed instructions, refer to the user manual.

Accessing the Print Plug-In

Adobe Photoshop

- Start Adobe Photoshop.
- Open the image that you wish to print.
- If required, select the print range.
- Select **Export** (or **Data Export**) from the **File** menu and then select the output plug-in that matches your printer.

The **imagePROGRAF Print Plug-In for Photoshop** window is displayed.



Digital Photo Professional

- Start Digital Photo Professional.
- Open the RGB color image that you want to print.
- If required, select the print range.
- Select **Plug-in printing** from the **File** menu and then select the output plug-in that matches your printer.

The **imagePROGRAF Print Plug-In for Digital Photo Professional** window is displayed.



Index

a

Adobe Photoshop 18

b

Belt Stopper 5
Bonjour 11
Borderless printing 15

c

Carrying Handles 6
Compatible operating systems 9, 11

d

Digital Photo Professional 18

e

Enlarged/reduced printing 17

i

Ink holes 3
Ink Tank Cover 3, 7
Ink Tank Lock Lever 3
IP 9, 11

l

Large-format printing 16

p

Page rotation by 90 degrees (paper conservation) 14
Power Supply 7
Print Plug-Ins 18
Print Preview 13
Printer driver features 13
Printer driver installation (Mac OS X) 11
Printer driver installation (Windows) 9

r

Reinstalling the printer 6
Roll Holder 5, 8

s

Stand 6

t

Tab Selection screen 2
TCP/IP (network) connection 9
Transfer preparations 2

u

USB connection 9, 11
User Manuals CD-ROM 10, 12
User Software CD-ROM 9, 11



Canon Inc.

30-2, Shimomaruko 3-chome, Ohta-ku, Tokyo 146-8501, Japan

Canon U.S.A., Inc.

One Canon Plaza, Lake Success, NY 11042 U.S.A

Canon Europe Ltd.

3 The Square, Stockley Park, Uxbridge, Middlesex, UB11 1ET United Kingdom

Canon (China) Co., Ltd.

15F Jinbao Building No.89 Jinbao Street, Dongcheng District, Beijing 100005, China

Canon Australia Pty. Ltd.

1 Thomas Holt Drive, North Ryde, Sydney, N.S.W.2113, Australia

