

**Wireless File Transmitter**

# **WFT-E1/E1A**

## **Network Setup Guide**

Compatible with WFT-E1 Utility Ver. 2

**For customers using the WFT-E1A**

Although this manual refers to the WFT-E1, the setup procedures are the same for the WFT-E1A.



# Manual contents and structure

To transfer images to a computer via a wireless or wired LAN using the WFT-E1, the computer has to function as an FTP server. To transfer images from the WFT-E1 to a computer, you need to have the proper settings on the computer and the WFT-E1.

To help you establish a simple image-transfer network, this manual explains a method of operating a computer as an FTP server, and the settings and procedures to transfer images using a wireless LAN or wired LAN to see images on a computer screen.

**IP addresses and security settings such as authentication, encryption, and SSID used in this manual are examples only. Make settings appropriate for your environment.**

For Windows infrastructure mode, this manual assumes that a wireless LAN access point with a router function is already connected to the FTP server by a wireless LAN or a wired LAN.

This manual contains explanations for Windows and Macintosh systems along with troubleshooting methods and references. Click an item in the table of contents below to view the page. This manual assumes that you have read the camera's instruction manual and are familiar with camera operating procedures. The menu screens are based on the EOS-1Ds Mark II.

## Table of contents

Windows	Macintosh
<b>1</b> Setting Up the Computer	<b>1</b> Transferring Images Using a Wireless LAN Infrastructure Mode
<b>2</b> Transferring Images Using a Wireless LAN Infrastructure Mode	<b>2</b> Transferring Images Using a Wireless LAN Ad Hoc Mode
<b>3</b> Transferring Images Using a Wireless LAN Ad Hoc Mode	<b>3</b> Transferring Images Using a Wired LAN
<b>4</b> Transferring Images Using a Wired LAN	
Troubleshooting	
Reference: Changing the LAN Settings with the Camera	



### For EOS 20D users

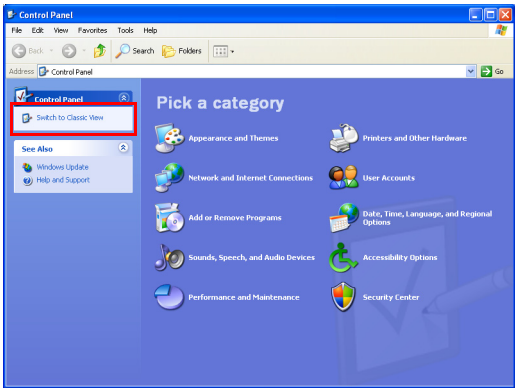
The EOS 20D firmware has to be Ver. 2.0.0 or higher, and the WFT-E1 firmware Ver. 2.0.1 or higher. If the firmware versions are older, upgrade them first.

# Setting Up the Computer

Install FTP Server Functions .....	4
Setting Up the Computer to Operate as an FTP Server .....	10
Changing Firewall Settings .....	12

## For Windows XP users

Follow the procedures below to restore the classic view in the Control Panel. Click the **[Start]** button, select **[Control Panel]** to open the **[Control Panel]** window, and click **[Switch to Classic View]**.



# Install FTP Server Functions

To use the computer as an FTP server, install Internet Information Services (IIS) on the computer (Windows XP or Windows 2000) on which images will be transferred. Internet Information Services can be installed using the Windows XP or Windows 2000 CD-ROM.

**Please be sure to have the CD-ROM for the operating system installed on the computer.**

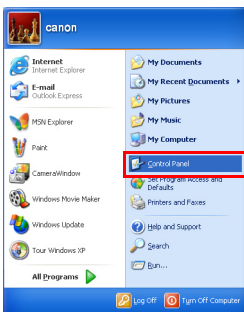
Although this chapter uses Windows XP screenshots, the procedure is the same for Windows 2000. If IIS is already installed, proceed to the next item “Setting Up the Computer to Operate as an FTP Server.”

**Windows XP Home Edition is not compatible with Internet Information Services. Be sure to use Windows XP Professional.**

**Do not insert the Windows XP CD-ROM into the computer until step 7.**

1

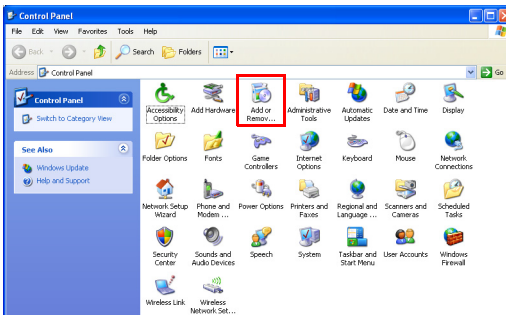
[Start] button → Select [Control Panel].



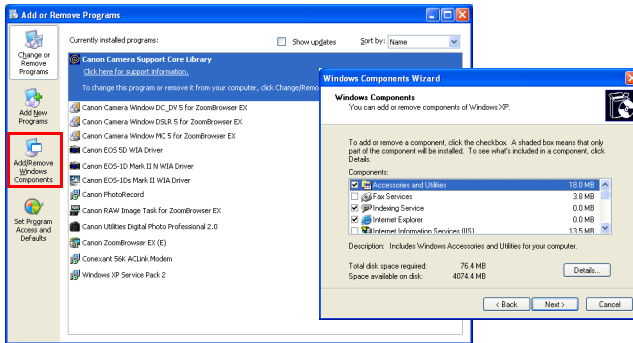
2

Double-click [Add or Remove Programs].

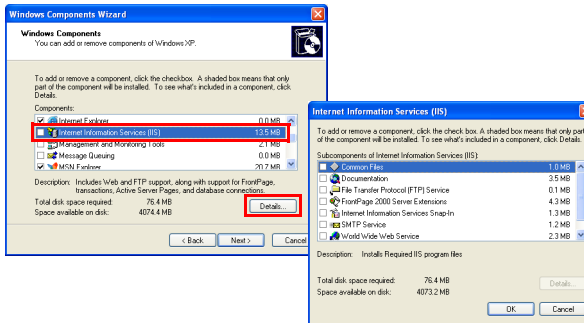
- In Windows 2000, double-click [Add/Remove Programs].



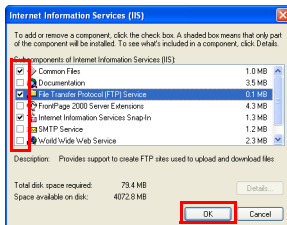
- 3 Click [Add/Remove Windows Components].**  
 ► The [Windows Components Wizard] will appear.



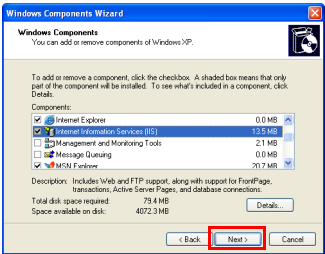
- 4 Double-click [Internet Information Services (IIS)].**  
 ► [Internet Information Services (IIS)] details will appear.



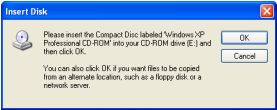
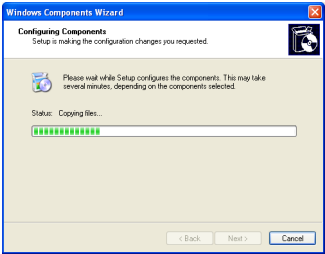
- 5 Check [File Transfer Protocol (FTP) Service].**  
 ► Check marks will also be placed in [Internet Information Services Snap-in] and [Common Files] as well.  
 ● Click the [OK] button to return to the [Windows Components Wizard].



6 Click the [Next] button.

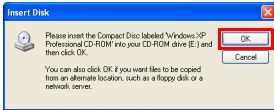


- Installation begins, and the [Insert Disk] message will appear. Depending on the computer, installation may go ahead without showing this message.



## 7 Insert the OS CD-ROM into the computer, and click the [OK] button.

- ▶ Installation starts and the completion screen appears.



- If a [Files Needed] message appears, click the [Browse] button to select [My Computer], and open the drive in which the OS CD-ROM was inserted. Open the [I386] folder and click the [Open] button. In the [Files Needed] message screen, click the [OK] button to resume installation.



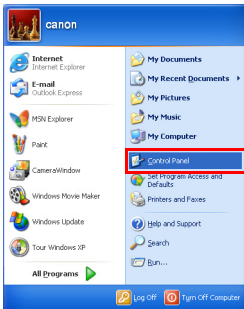
- Click the [Finish] button to finish installation of Internet Information Services (IIS).



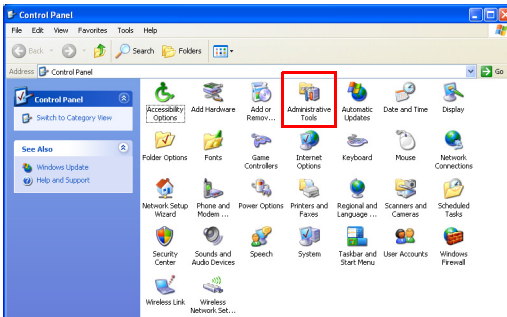
- Follow the procedures on the next page to make sure that Internet Information Services (IIS) is installed.

## Checking Installation

1 [Start] button → Select [Control Panel].

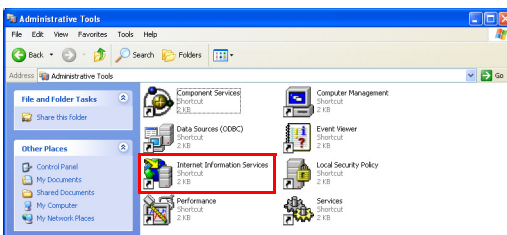


2 Double-click [Administrative Tools].



3 Double-click [Internet Information Services].

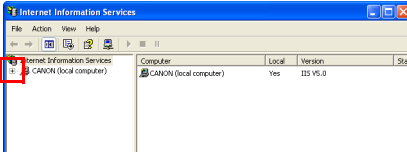
- In Windows 2000, double-click [Internet Service Manager].





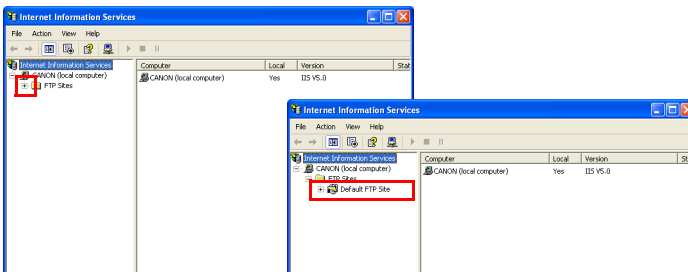
## 4 Click [+].

- “CANON ...” on the right of the [+] sign indicates the computer's name, so it will differ depending on the computer.



## 5 Click [+] on the left of [FTP Sites].

- If [Default FTP Site] appears, Internet Information Services (IIS) is successfully installed.

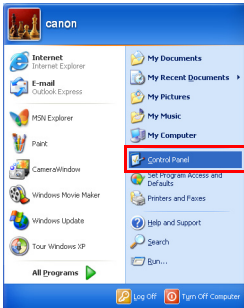


### If [Default FTP Site] does not appear

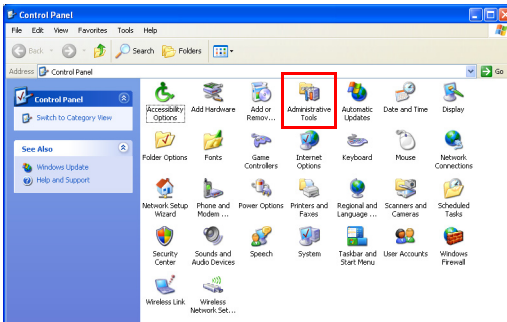
- Try installing Internet Information Services (IIS) again.
- If you have confirmed that Internet Information Services (IIS) is installed, proceed to “Setting Up the Computer to Operate as an FTP Server” on page 10. Without these settings the computer will not operate as an FTP server.

# Setting Up the Computer to Operate as an FTP Server ■

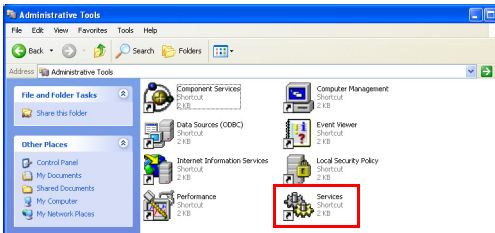
1 [Start] button → Select [Control Panel].



2 Double-click [Administrative Tools].

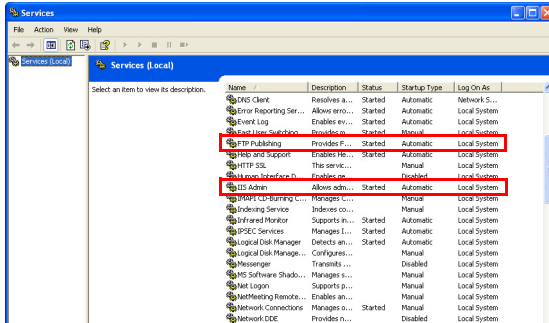


3 Double-click [Services].



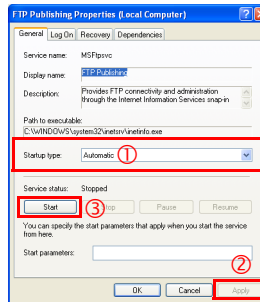
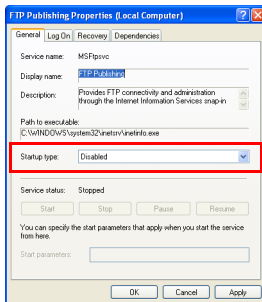
## 4 Select [Status] and [Startup Type] in [FTP Publishing] and [IIS Admin].

- If [Status] is set to [Started] and [Startup Type] is [Automatic], your computer will operate as an FTP server.
- In Windows 2000, [IIS Admin] appears as [IIS Admin Service].

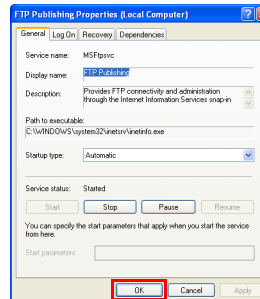
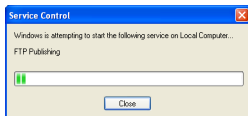


If the settings are not configured as above

- Double-click [Properties], select [Automatic] for [Startup type], and click the [Apply] button. Then click the [Start] button in [Service status].



- ▶ A [Service Control] startup screen will appear.
- Click the [OK] button in [Properties] to finish the settings.

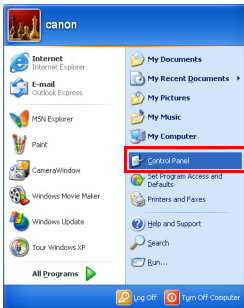


# Changing Firewall Settings

This section is only for people using Windows XP Service Pack 2 or a higher version.

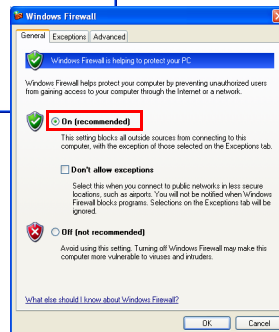
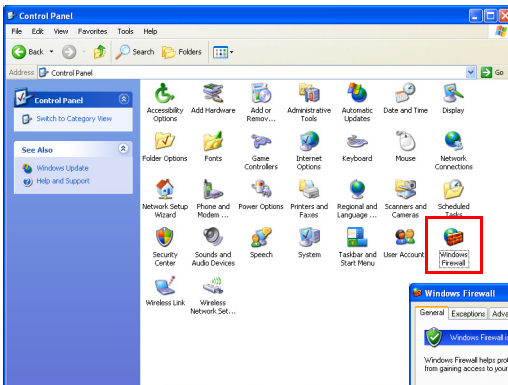
With Windows XP Service Pack 2, images may not be transferred if the Windows firewall is on, so you need to change the settings of the Windows firewall.

## 1 [Start] button → Select [Control Panel].



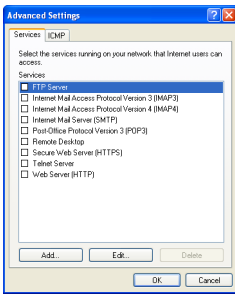
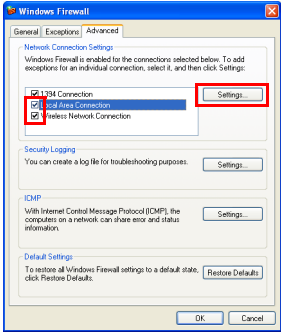
## 2 Double-click [Windows Firewall].

- ▶ [Windows Firewall] will appear.
- ▶ Select [On (recommended)]



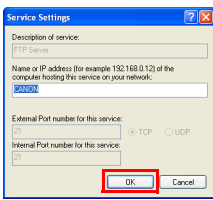
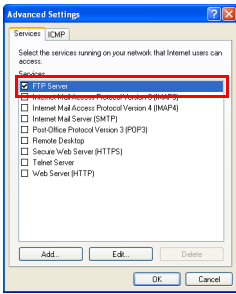
### 3 Double-click [Advanced].

- Check [Local Area Connection] if you use a LAN cable to transfer images to the computer, or [Wireless Network Connection] if you use a wireless connection, and click the [Settings] button.
- ▶ [Advanced Settings] will appear.



### 4 Check [FTP Server].

- ▶ If [Service Settings] appears, click the [OK] button without changing anything.



- ▶ Click the [OK] button in [Advanced Settings] and click the [OK] button in [Windows Firewall] to finish the settings.

W

1  
Setting Up the Computer



## MEMO

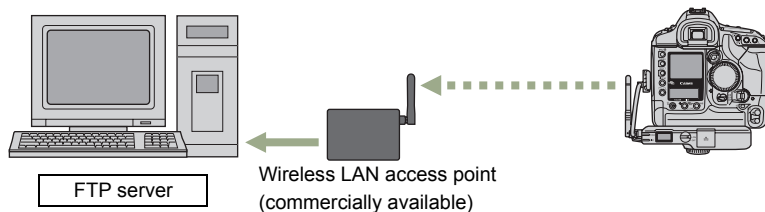
## Transferring Images Using a Wireless LAN

### Infrastructure Mode

Setting Up the FTP Server .....	16
Setting Up the Wireless LAN Access Point.....	19
Creating the WFT-E1 Settings File.....	21
Setting Up the WFT-E1 .....	24
Checking the Connection Status .....	26
Transferring Images to the FTP Server.....	27
Viewing Transferred Images on the FTP Server .....	28

#### Infrastructure Mode Overview

Images are transmitted to an FTP server via a wireless LAN access point.

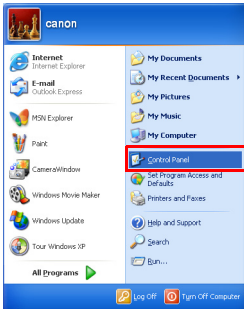


Connect a wireless LAN access point to an FTP server using a LAN cable, wireless LAN card or wireless LAN adapter.

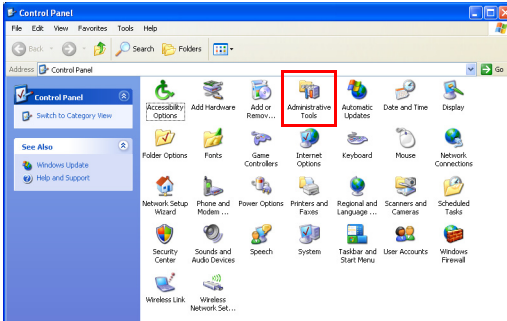
# Setting Up the FTP Server

This chapter assumes that the wireless LAN access point is already connected to the FTP server by a wireless LAN or a wired LAN.

## 1 [Start] button → Select [Control Panel].

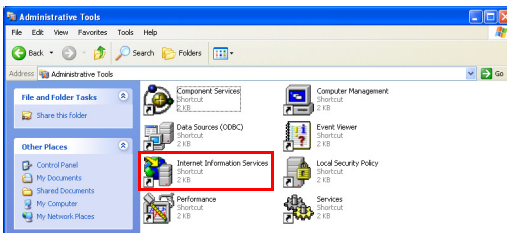


## 2 Double-click [Administrative Tools].



## 3 Double-click [Internet Information Services].

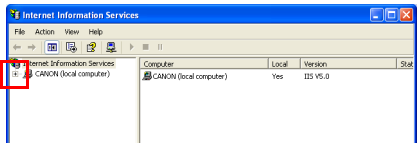
- In Windows 2000, double-click [Internet Service Manager].





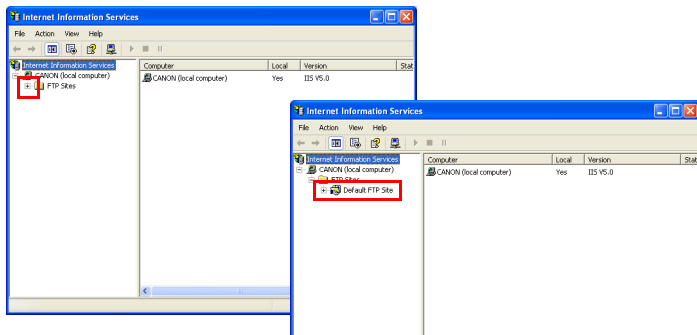
## 4 Click [+].

- “CANON ...” on the right of the [+] sign indicates the computer's name, so it will differ depending on the computer.



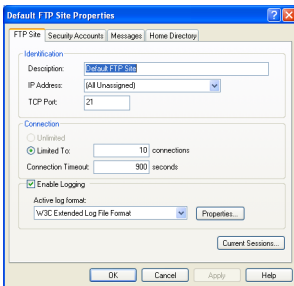
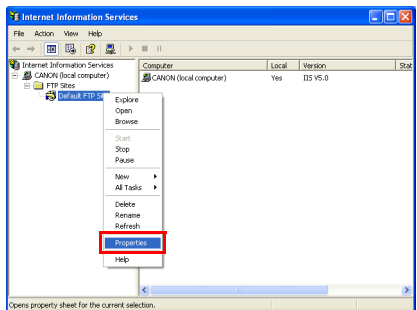
## 5 Click [+] on the left of [FTP Sites].

- [Default FTP Site] will appear.



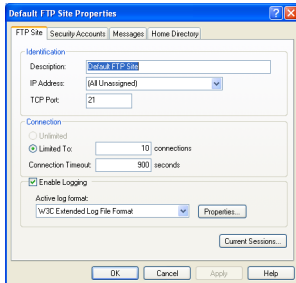
## 6 Right-click [Default FTP Site], and select [Properties].

- [Default FTP Site Properties] will appear.



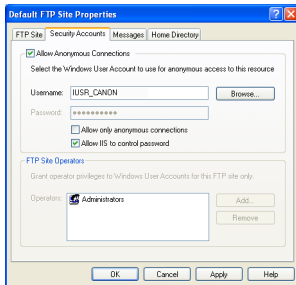
## 7 Configure settings in each tab.

- Configure settings on the **[FTP Site]**, the **[Security Accounts]**, and the **[Home Directory]** tabs as follows.



### [FTP Site]

Usually it is already set like this, so you do not need to change it.

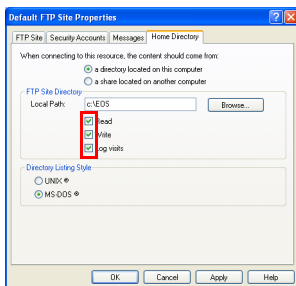


### [Security Accounts]

You do not need to change it.

### Important!

Never change the **[Username]**. ([Username] in the left window is an example.) The characters following "IUSR\_" indicate the computer's name, so they will differ depending on your computer.



### [Home Directory]

Assign a folder to transfer images to in the **[Local Path]** of the **[FTP Site Directory]**. Create an **[EOS]** folder immediately under the C drive. Enter **[C:\EOS]** in **[Local Path]**, and check **[Read]**, **[Write]**, and **[Log visits]**.

- Click the **[OK]** button and close the screen to finish FTP site settings.

# Setting Up the Wireless LAN Access Point

This section explains the minimal setup required to transfer images using a wireless LAN access point with infrastructure mode. For detailed installation and setup procedures for a wireless LAN access point, please read the instruction manual for the wireless LAN access point or contact the manufacturer of the wireless LAN access point.

Terms used in this section may differ depending on the manufacturer of the wireless LAN access point.

The high-speed transfer mode developed by the manufacturer may destabilize communication, so it is recommended not to use it.

W

## Selecting a Wireless LAN Standard

Operating mode, wireless mode, 802.11 mode, and other modes fall under this category. Select **“802.11b”**, **“802.11g”**, or **“Automatic.”**

## Setting the SSID

It is also known as the “ESSID.”

Enter a **series of alphanumeric characters (up to 36 characters)**.

If a string is already entered, you do not need to change it.

**Enter the same SSID in the WFT-E1.**

## Setting Security

Encryption and other items fall under this category.

Set up **“WEP”** as the minimum security.

**Enter the encryption key set for WEP in the WFT-E1.**

- If authentication can be selected, set it to “Open.”
- When using WPA-PSK authentication, use the TKIP encryption method. The WFT-E1 does not accommodate the AES encryption method.

2

Infrastructure Mode

## Setting the IP Address

For a wireless LAN access point with a DHCP server function, it is recommended to disable the DHCP server function and fix the IP addresses allocated to the wireless LAN access point and the FTP server as follows.

If the DHCP server function is enabled, the IP address allocated to the FTP server will change automatically so the WFT-E1 may not connect to the FTP server.

Enter the IP addresses for the wireless LAN access point and the FTP server and subnet mask as follows.

If they are already entered, do not change them, and write down the IP addresses configured in the wireless LAN access point and the FTP server, the subnet mask, and the range of IP addresses available. The information will be used when setting up the WFT-E1.

- IP address  
Wireless LAN access point :192.168.11.1  
FTP server :192.168.11.2
- Subnet mask  
255.255.255.0



If other wireless LAN equipment is connected to the wireless LAN access point you set up in this section, change the settings as required. If you use the equipment without changing the settings, other wireless LAN equipment may not be able to connect to the wireless LAN access point.

# Creating the WFT-E1 Settings File ■

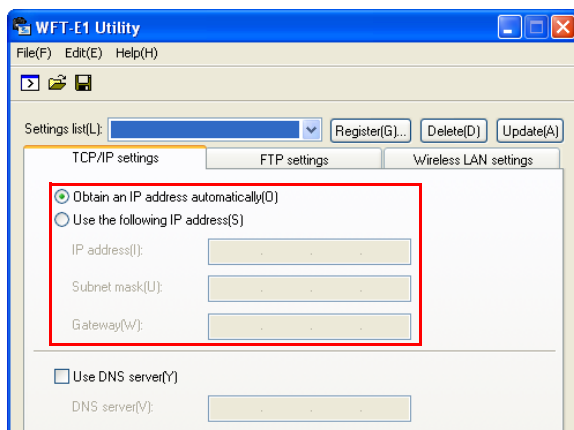
Use the WFT-E1 Utility software included in the package to create the settings file to transfer images using infrastructure mode.

Start WFT-E1 Utility.exe and set up as follows. If the WFT-E1 Settings Wizard appears, click the [Cancel] button.

W

## Setting Up TCP/IP

- If the wireless LAN access point, etc., is set to disable the DHCP server function in “Setting the IP Address” on the previous page, enter the IP address among the allocated IP address in a range that is not duplicated with the FTP server or other network equipment.
- Enter the subnet mask the same way as for the wireless LAN access point.
- If the wireless LAN access point, etc., is set to enable the DHCP server function in “Setting the IP Address” on the previous page, check [○Obtain an IP address automatically].

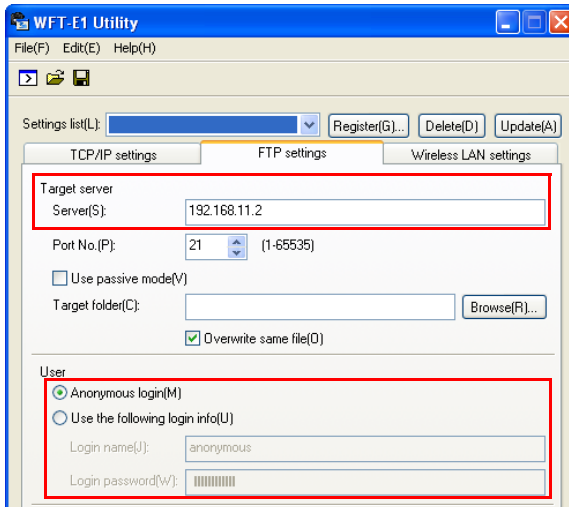


2

Infrastructure Mode

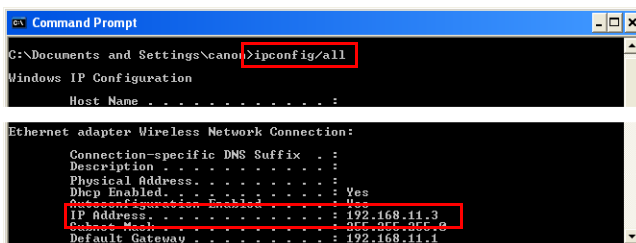
## Setting Up FTP

- For [Server] of [Target server], enter the IP address or server name for the FTP server as found through the “Command Prompt” as follows.
- For the [User], checkmark [O] **Anonymous login**. To login to the FTP server, enter **anonymous** for the Login name, and enter **wft-e1@canon** for the password.



### Checking the IP address of the FTP server using the Command Prompt

- The FTP server's [Start] button → Select [All Programs] → [Accessories] → [Command Prompt].
- Input **ipconfig/all**, and press the Enter key.
- ▶ “Wireless Network Connection” status appears. “Autoconfiguration IP Address” or “IP Address” is the IP address for the FTP server.

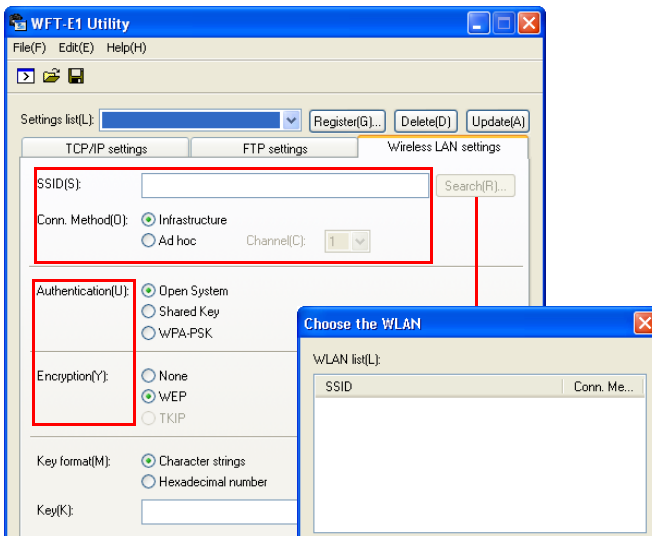




If the IP address is referred to as the “**Autoconfiguration IP Address**”, the wireless LAN access point may automatically change the IP address of the FTP server after a set amount of time. In the wireless LAN access point settings, set the time to automatically allocate an IP address as long as possible. If they are successfully connected at first and then error No. 41 (cannot connect to the FTP server) appears later, check the IP address for the FTP server using the Command Prompt, and set the same IP address in the WFT-E1.

## Setting Up a Wireless LAN

- Enter the [SSID] the same way as for the wireless LAN access point.
- If your personal computer is connected to a wireless LAN access point or wireless LAN adapter, click the [Search] button to search within the personal computer's wireless LAN environment for a wireless LAN terminal being used nearby. The terminal's SSID will then be displayed. When you select the displayed SSID, the SSID and connection method and channel will be set automatically to connect to the wireless LAN terminal.
- For [Conn. Method], set [Infrastructure].
- Set [Authentication] and [Encryption] the same way as the security settings for the wireless LAN access point.



## Saving the Settings File

File(F)	
New Settings Wizard(N)	Ctrl+N
Open(O)...	Ctrl+O
Save(S)...	Ctrl+S
Exit(X)	

- Under the [File] menu, select [Save] to save the communication settings file to the memory card.
- Save the settings file to the root directory of the memory card without changing the file name.

# Setting Up the WFT-E1

Please read Chapter 2 "Setting Up the WFT-E1" in the PDF manual on the WFT-E1/E1A Utility Disk included in the package.

Conduct the series of preparations described on pages 16 through 24, and download the settings file to the camera.

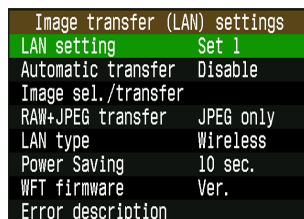
## Selecting the Settings File

### 1 Select [Image transfer (LAN) settings] from the menu.

[Image transfer (LAN) settings] will not appear unless the WFT-E1 is connected to the camera, and both are turned on.

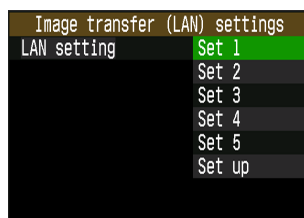


### 2 Select [LAN setting].



### 3 Select a set number.

Select the set number where the settings file is downloaded for infrastructure mode.





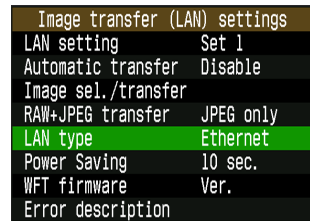
## Selecting the LAN Type

### 1 Select [Image transfer (LAN) settings] from the menu.

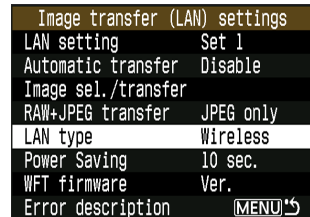
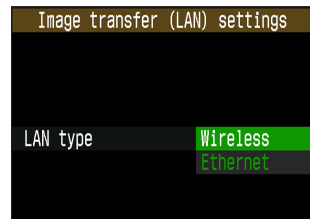
[Image transfer (LAN) settings] will not appear unless the WFT-E1 is connected to the camera, and both are turned on.



### 2 Select [LAN type].



### 3 Select [Wireless].



W

2

Infrastructure Mode

# Checking the Connection Status ■

Check the connection status with the wireless LAN access point.

Connect the FTP server and the wireless LAN access point, and turn the power on.

Connect the WFT-E1 and the camera, and turn the power on.

---

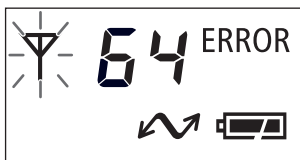
Check the connection when the WFT-E1 and the wireless LAN access point are close to each other — 3m/9.8ft or less.

## Successful connection display



- The <3> lamp and the <4> lamp on the WFT-E1 will light up, and the LCD panel will show the link speed (Mbps) and <B>.
- After the period of time passes with no activity as set in the [**Power Saving**] menu, the <4> lamp will turn off and the link speed and <B> will also disappear from the LCD panel.

## Failed connection display



- The LCD panel will show <E> and an error number. The <B> and <3> lamps will also blink.
- See troubleshooting (p.103) to solve the problem.

# Transferring Images to the FTP Server ■

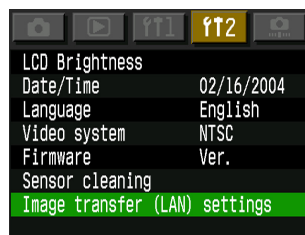
This section uses automatic transfer as an example to explain how to transfer images to the FTP server.

If a memory card is not installed in the camera, images cannot be transferred. Images will also be stored in the memory card, so insert a memory card with adequate available space.

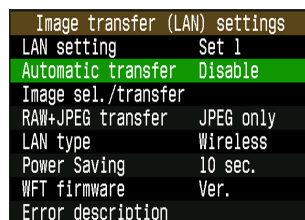
W

## 1 Select [Image transfer (LAN) settings] from the menu.

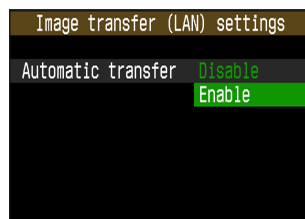
[Image transfer (LAN) settings] will not appear unless the WFT-E1 is connected to the camera, and both are turned on.



## 2 Select [Automatic transfer].



## 3 Select [Enable].

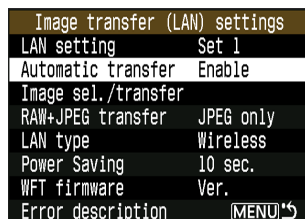


2

Infrastructure Mode

## 4 Take a picture.

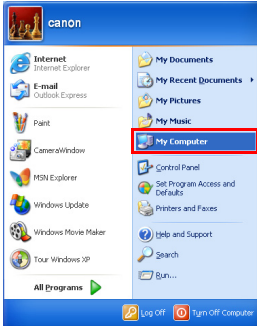
► The <4> lamp will blink and captured image will be transferred to the FTP server.



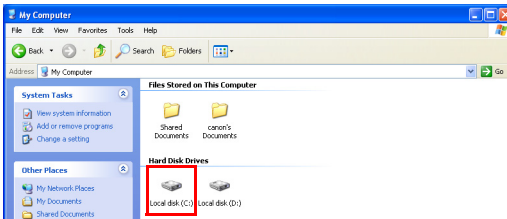
# Viewing Transferred Images on the FTP Server ■

Transferred images are saved in the folder on the FTP server that was created on page 18.

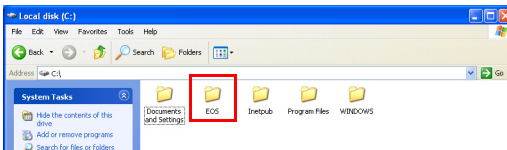
**1 [Start] button → Select [My Computer].**



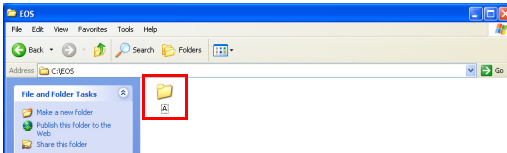
**2 Double-click the [Local disk (C:)] icon in [Hard Disk Drives].**



**3 Double-click the [EOS] folder.**

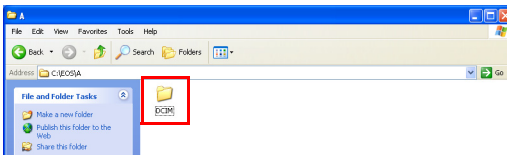


## 4 For the EOS-1D series, double-click the [A] folder.



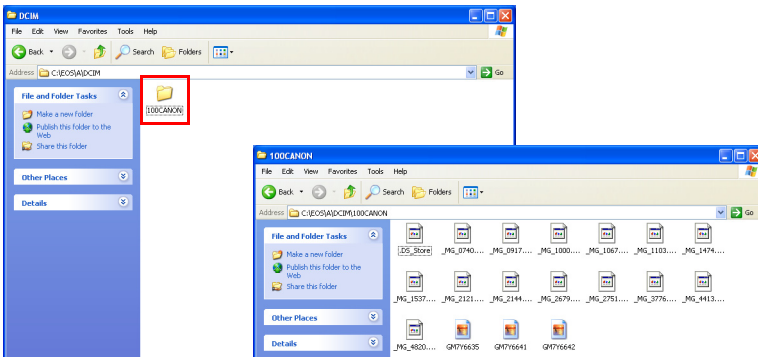
- The [A] folder contains images saved in the CF card. If the images saved in the SD card have been transferred, a [B] folder is automatically created and images will be saved there.

## 5 Double-click the [DCIM] folder.



## 6 Double-click the [\*\*\*CANON], the [\*\*\*EOS1D], or the [\*\*\*EOS5D] folder.

- Transferred image data will appear.





## MEMO

# Transferring Images Using a Wireless LAN

## Ad Hoc Mode

Setting Up the FTP Server .....	32
Creating the WFT-E1 Settings File.....	39
Setting Up the WFT-E1 .....	41
Checking the Connection Status .....	43
Transferring Images to the FTP Server.....	44
Viewing Transferred Images on the FTP Server .....	45

### Ad Hoc Mode Overview

Images are directly transmitted to an FTP server equipped with a wireless LAN card or a wireless LAN adapter.

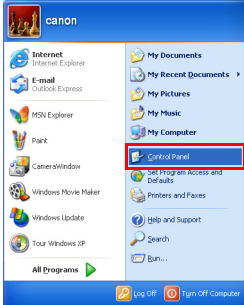


Install drivers for a wireless LAN card or a wireless LAN adapter on an FTP server.

# Setting Up the FTP Server

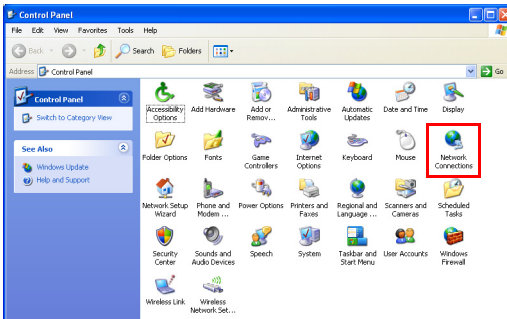
## Setting the IP Address

1 [Start] button → Select [Control Panel].



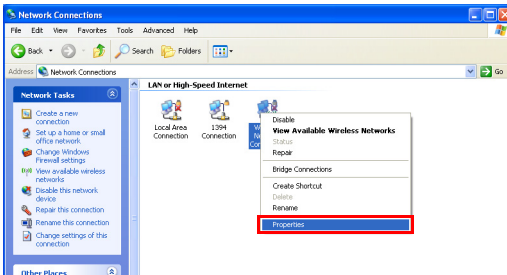
2 Double-click [Network Connections].

- In Windows 2000, double-click [Network and Dial-up Connections].



3 Right-click [Wireless Network Connection] and select [Properties].

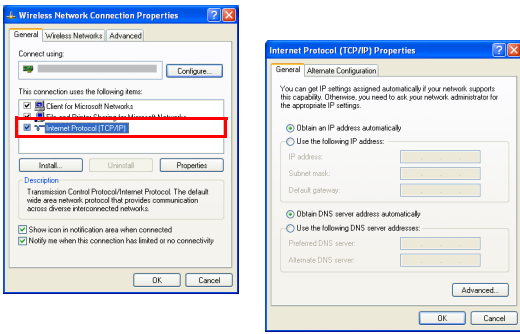
- [Wireless Network Connection Properties] will appear.





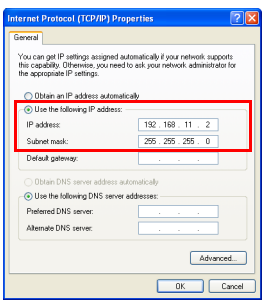
# 4 Double-click [Internet Protocol (TCP/IP)].

► [Internet Protocol (TCP/IP) Properties] will appear.



# 5 Enter the [IP address] and the [Subnet mask].

- Check [☐ Use the following IP address] and enter the following numbers for [IP address] and [Subnet mask].
- [IP address]: 192 168 11 2
- [Subnet mask]: 255 255 255 0



## Important!

Set IP addresses for the FTP server and the WFT-E1 as follows. The following IP addresses are examples. Set appropriate IP addresses according to your environment.

FTP server	192 168 11 2
WFT-E1	192 168 11 3

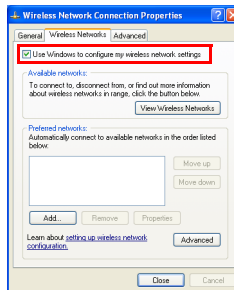
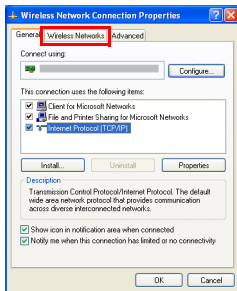
- Click the [OK] button to return to the [Wireless Network Connection Properties] screen and proceed to SSID settings.

### SSID Settings

If software that comes with a wireless LAN adapter is installed, the SSID settings explained below may not be achievable. In that case, disable or uninstall the software that comes with the wireless LAN adapter.

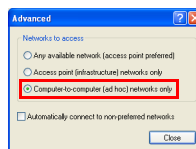
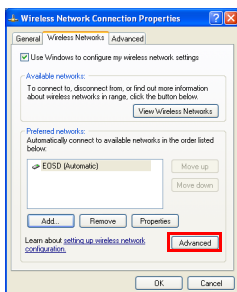
#### 1 Double-click the [Wireless Networks] tab.

- Check [☐Use Windows to configure my wireless network settings].



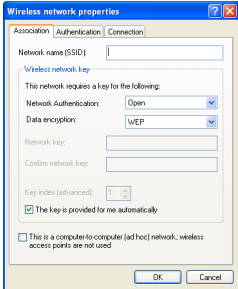
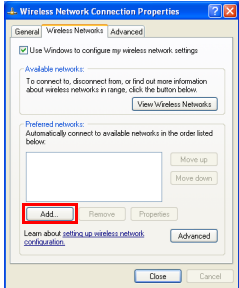
#### 2 Click the [Advanced] button.

- The [Advanced] screen will appear.
- Check [☐Computer-to-computer (ad hoc) networks only] and click the [Close] button.



3 Click the [Add] button.

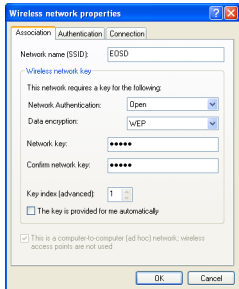
- Click the [Add] button on the [Wireless Networks] tab. The [Wireless network properties] screen appears.



W

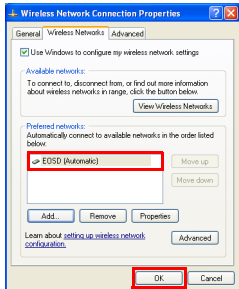
4 Set the [Association] tab.

- Remove the check from ☐The key is provided for me automatically], and set the tab as follows.
- If the settings are done, click the [OK] button to return to [Wireless Network Connection Properties].



Network name (SSID)	EOSD
Network Authentication	Open
Data encryption	WEP
Network key	canon
Confirm network key	canon

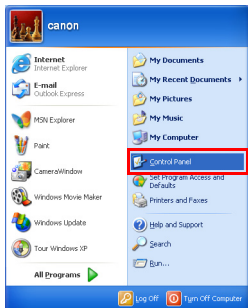
- Make sure that [EOSD (Automatic)] appears for [Preferred networks].
- Click the [OK] button to finish the SSID settings.



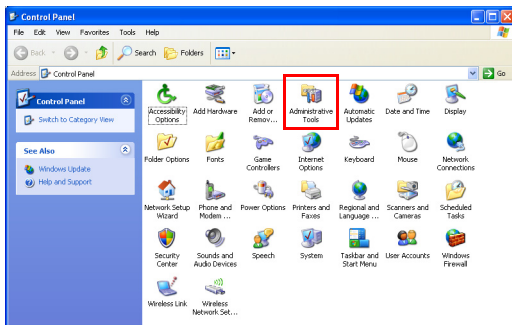
3  
Ad Hoc Mode

## Setting Up the FTP Site

1 [Start] button → Select [Control Panel].

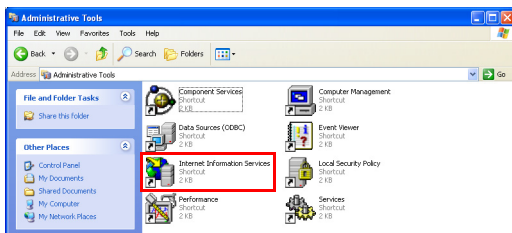


2 Double-click [Administrative Tools].



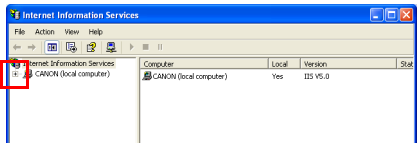
3 Double-click [Internet Information Services].

- In Windows 2000, double-click [Internet Service Manager].



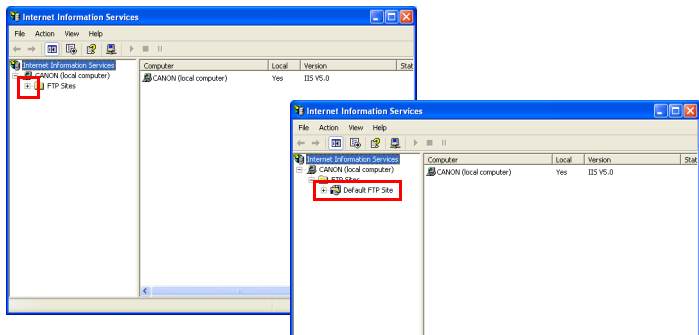
# 4 Click [+].

- “CANON ...” on the right of the [+] sign indicates the computer's name, so it will differ depending on the computer.



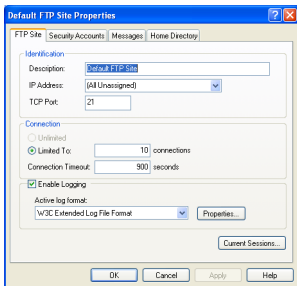
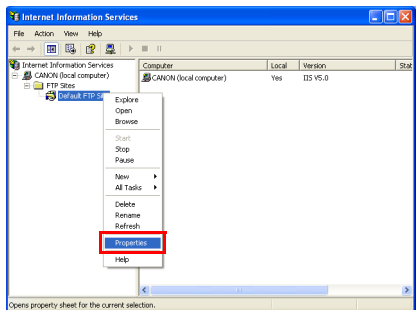
# 5 Click [+] on the left of [FTP Sites].

- [Default FTP Site] will appear.



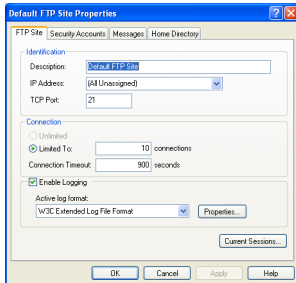
# 6 Right-click [Default FTP Site], and select [Properties].

- [Default FTP Site Properties] will appear.



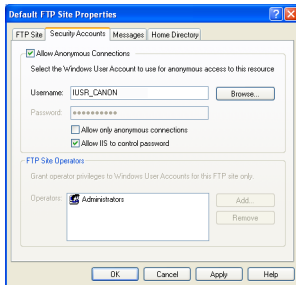
## 7 Configure settings in each tab.

- Configure settings on the **[FTP Site]**, the **[Security Accounts]**, and the **[Home Directory]** tabs as follows.



### [FTP Site]

Usually it is already set like this, so you do not need to change it.

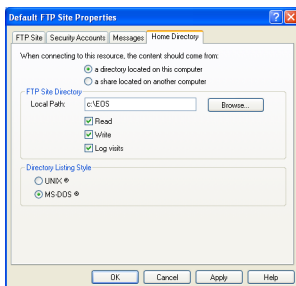


### [Security Accounts]

You do not need to change it.

### Important!

Never change the **[Username]**. ([Username] in the left window is an example.) The characters following "IUSR\_" indicate the computer's name, so they will differ depending on your computer.



### [Home Directory]

Assign a folder to transfer images to in the **[Local Path]** of the **[FTP Site Directory]**. Create an **[EOS]** folder immediately under the C drive. Enter **[C:\EOS]** in **[Local Path]**, and check **[Read]**, **[Write]**, and **[Log visits]**.

- Click the **[OK]** button and close the screen to finish FTP site settings.

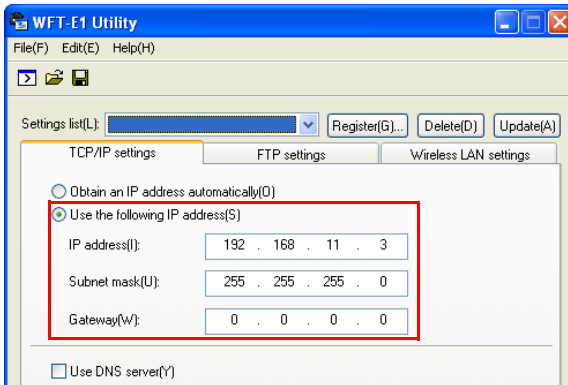
# Creating the WFT-E1 Settings File ■

Use the WFT-E1 Utility software included in the package to create the settings file to transfer images using ad hoc mode.

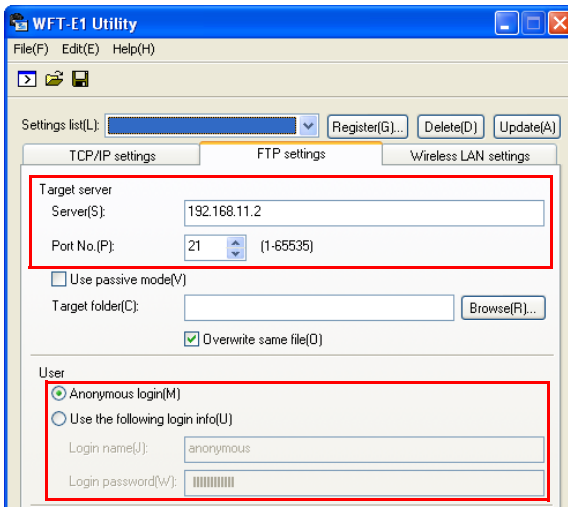
Start WFT-E1 Utility.exe and set up as follows. If the WFT-E1 Settings Wizard appears, click the [Cancel] button.

W

## Setting Up TCP/IP



## Setting Up FTP

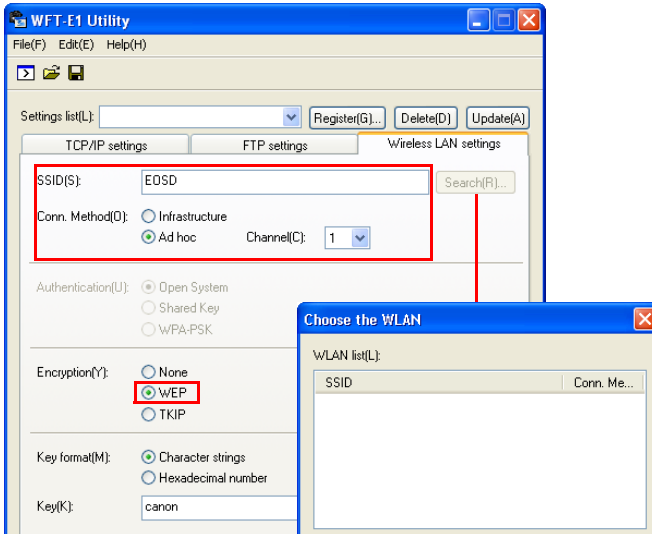


- For the [User], checkmark [O] **Anonymous login**. To login to the FTP server, enter **anonymous** for the Login name, and enter **wft-e1@canon** for the password.

3

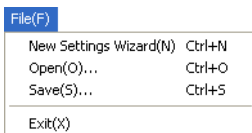
Ad Hoc Mode

## Setting Up a Wireless LAN



- Enter [SSID], [Authentication], and [Encryption] the same way as for “SSID Settings” on page 34.
- If your personal computer is connected to a wireless LAN access point or wireless LAN adapter, click the [Search] button to search within the personal computer’s wireless LAN environment for a wireless LAN terminal being used nearby. The terminal’s SSID will then be displayed. When you select the displayed SSID, the SSID and connection method and channel will be set automatically to connect to the wireless LAN terminal.
- As for [Channel], it does not matter which channel if [Use Windows to configure my wireless network settings] is checked (p.34). If it is not checked, use the same channel number as set by the driver or utility that comes with the wireless LAN card or the wireless LAN adapter.

## Saving the Settings File



- Under the [File] menu, select [Save] to save the communication settings file to the memory card.
- Save the settings file to the root directory of the memory card without changing the file name.



# Setting Up the WFT-E1

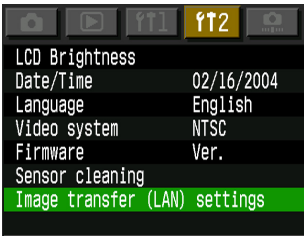
Please read Chapter 2 “Setting Up the WFT-E1” in the PDF manual on the WFT-E1/E1A Utility Disk included in the package.  
Conduct the series of preparations described on pages 16 through 24, and download the settings file to the camera.



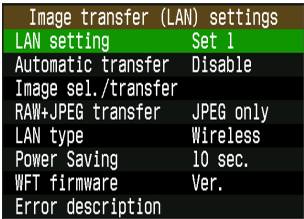
## Selecting the Settings File

### 1 Select [Image transfer (LAN) settings] from the menu.

[Image transfer (LAN) settings] will not appear unless the WFT-E1 is connected to the camera, and both are turned on.

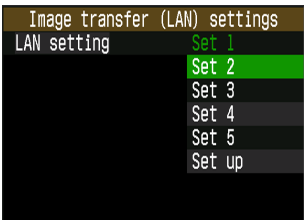


### 2 Select [LAN setting].



### 3 Select Set No.

Select the Set No. in which the ad hoc settings file is loaded.



Ad Hoc Mode

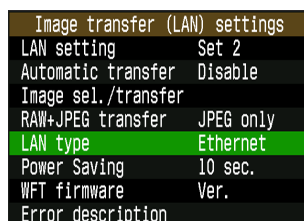
## Selecting the LAN Type

### 1 Select [Image transfer (LAN) settings] from the menu.

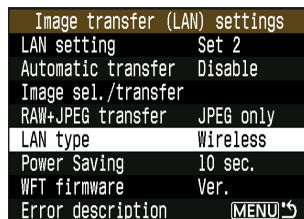
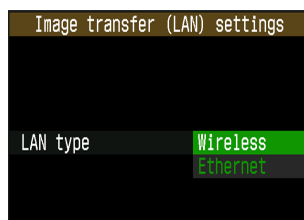
[Image transfer (LAN) settings] will not appear unless the WFT-E1 is connected to the camera, and both are turned on.



### 2 Select [LAN type].



### 3 Select [Wireless].



# Checking the Connection Status

Check the connection status to the wireless LAN card or the wireless LAN adapter. Connect the wireless LAN card or the wireless LAN adapter to the FTP server, and turn the power on. Connect the WFT-E1 and the camera, and turn the power on.

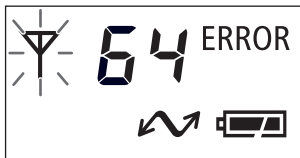
Check the connection when the WFT-E1 and the wireless LAN card or the wireless LAN adapter are close to each other — 3m/9.8ft or less.

## Successful connection display



- The <3> lamp and the <4> lamp on the WFT-E1 will light up, and the LCD panel will show the link speed (Mbps) and <B>.
- After the period of time passes with no activity as set in the [Power Saving] menu, the <4> lamp will turn off and the link speed and <B> will also disappear from the LCD panel.

## Failed connection display



- The LCD panel will show <E> and an error number. The <B> and <3> lamps will also blink.
- See troubleshooting (p.103) to solve the problem.

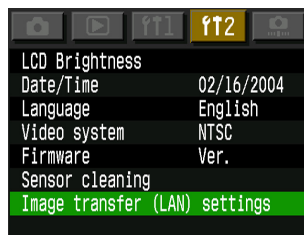
# Transferring Images to the FTP Server ■

This section uses automatic transfer as an example to explain how to transfer images to the FTP server.

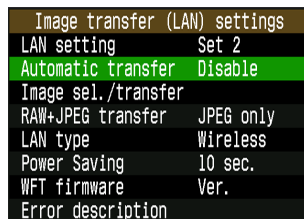
If a memory card is not installed in the camera, images cannot be transferred. Images will also be stored in the memory card, so insert a memory card with adequate available space.

## 1 Select [Image transfer (LAN) settings] from the menu.

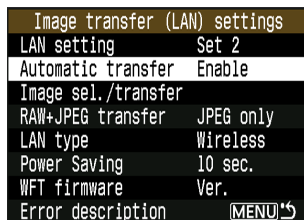
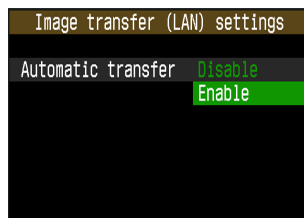
[Image transfer (LAN) settings] will not appear unless the WFT-E1 is connected to the camera, and both are turned on.



## 2 Select [Automatic transfer].



## 3 Select [Enable].



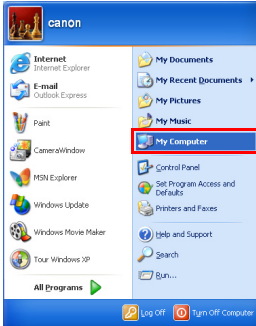
## 4 Take a picture.

- The <4> lamp will blink and captured image will be transferred to the FTP server.

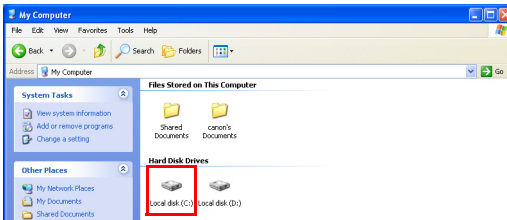
# Viewing Transferred Images on the FTP Server ■

Transferred images are saved in the folder on the FTP server that was created on page 38.

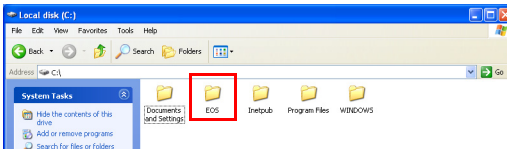
## 1 [Start] button → Select [My Computer].



## 2 Double-click the [Local disk (C:)] icon in [Hard Disk Drives].



## 3 Double-click the [EOS] folder.

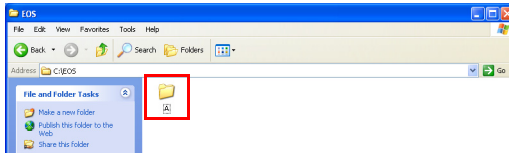


W

3

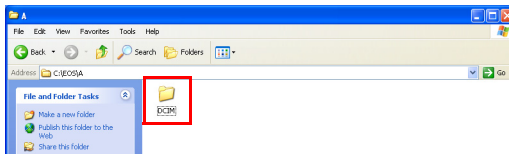
Ad Hoc Mode

## 4 For the EOS-1D series, double-click the [A] folder.



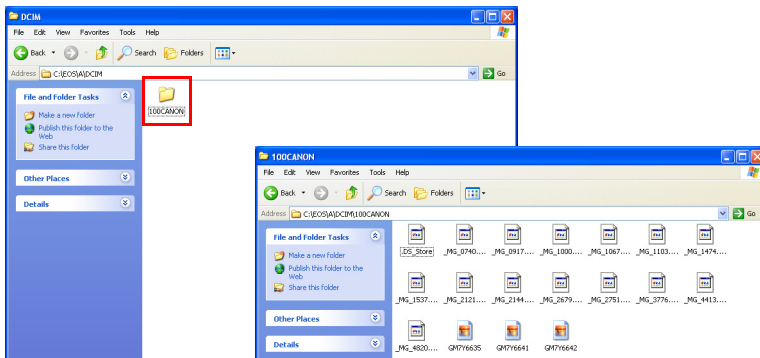
- The [A] folder contains images saved in the CF card. If the images saved in the SD card have been transferred, a [B] folder is automatically created and images will be saved there.

## 5 Double-click the [DCIM] folder.



## 6 Double-click the [\*\*\*CANON], the [\*\*\*EOS1D], or the [\*\*\*EOS5D] folder.

- Transferred image data will appear.



# Transferring Images Using a Wired LAN

Setting Up the FTP Server .....	48
Creating the WFT-E1 Settings File.....	53
Setting Up the WFT-E1 .....	55
Checking the Connection Status .....	57
Transferring Images to the FTP Server.....	58
Viewing Transferred Images on the FTP Server .....	59

## Wired LAN Overview

Connect the WFT-E1 to the FTP server with a LAN cable to transfer images.

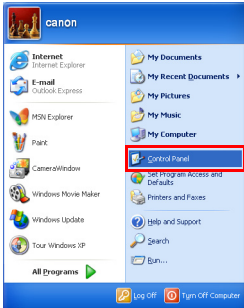


When connecting the WFT-E1 directly to the FTP server, make sure to use a cross cable. If a straight cable is used, error No. 81 will be displayed and you will not be able to transfer images. When using a straight cable, connect the FTP server and the WFT-E1 via a hub or a router.

# Setting Up the FTP Server

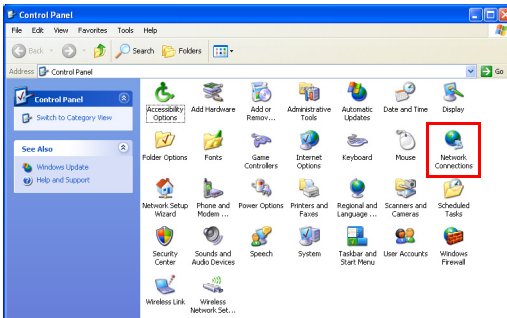
## Setting the IP Address

1 [Start] button → Select [Control Panel].



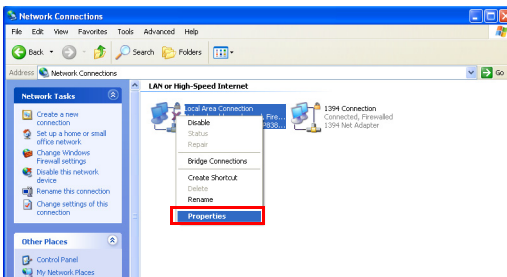
2 Double-click [Network Connections].

- In Windows 2000, double-click [Network and Dial-up Connections].



3 Right-click [Local Area Connection] and select [Properties].

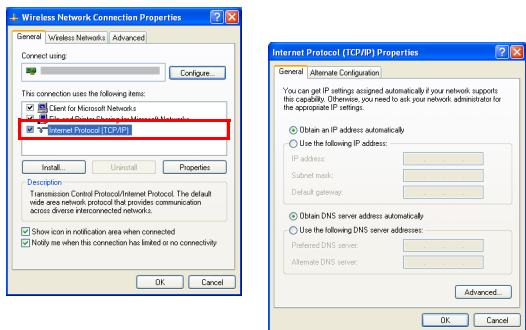
- ▶ [Local Area Connection Properties] will appear.





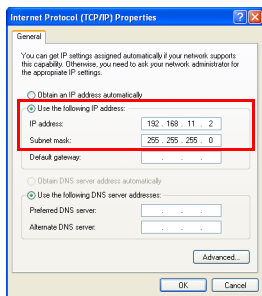
## 4 Double-click [Internet Protocol (TCP/IP)].

► [Internet Protocol (TCP/IP) Properties] will appear.



## 5 Enter the [IP address] and the [Subnet mask].

- Check [☐ Use the following IP address] and enter the following numbers for [IP address] and [Subnet mask].
- [IP address]: 192 168 11 2
- [Subnet mask]: 255 255 255 0



### Important!

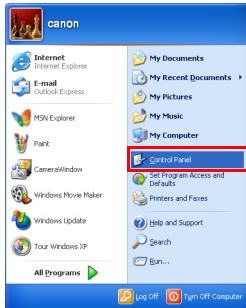
Set IP addresses for the FTP server and the WFT-E1 as follows. The following IP addresses are examples. Set appropriate IP addresses according to your environment.

FTP server	192 168 11 2
WFT-E1	192 168 11 3

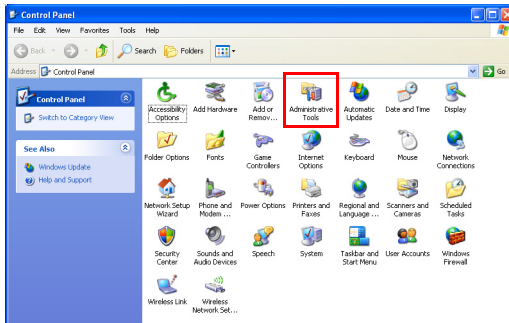
- Click the [OK] button to finish IP address settings.

## Setting Up the FTP Site

1 [Start] button → Select [Control Panel].

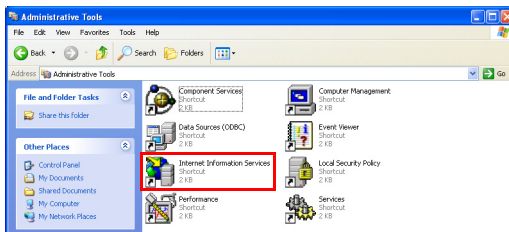


2 Double-click [Administrative Tools].



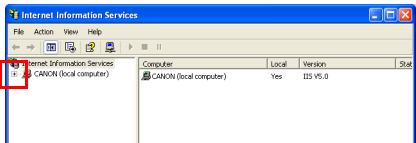
3 Double-click [Internet Information Services].

- In Windows 2000, double-click [Internet Service Manager].



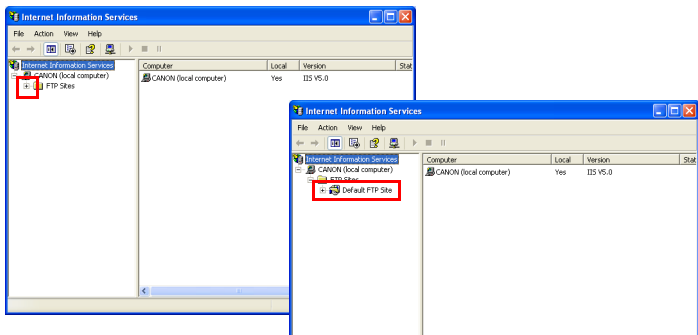
# 4 Click [+].

- “CANON ...” on the right of the [+] sign indicates the computer's name, so it will differ depending on the computer.



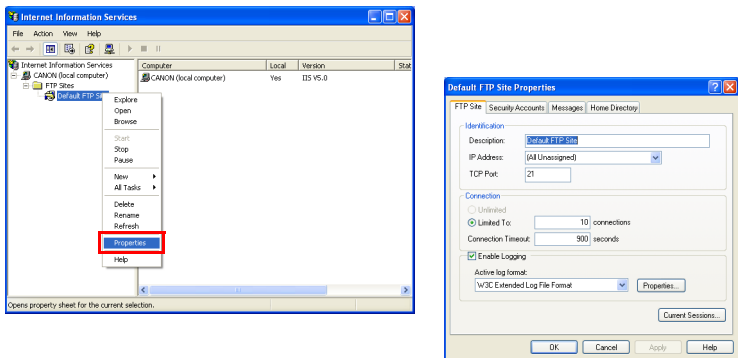
# 5 Click [+] on the left of [FTP Sites].

- [Default FTP Site] will appear.



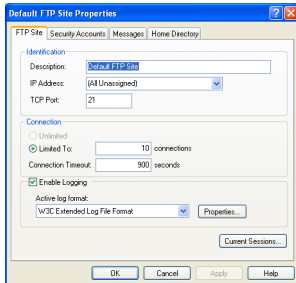
# 6 Right-click [Default FTP Site], and select [Properties].

- [Default FTP Site Properties] will appear.



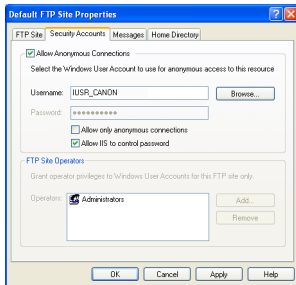
## 7 Configure settings in each tab.

- Configure settings on the **[FTP Site]**, the **[Security Accounts]**, and the **[Home Directory]** tabs as follows.



### [FTP Site]

Usually it is already set like this, so you do not need to change it.

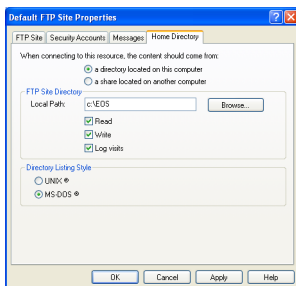


### [Security Accounts]

You do not need to change it.

### Important!

Never change the **[Username]**. ([Username] in the left window is an example.) The characters following "IUSR\_" indicate the computer's name, so they will differ depending on your computer.



### [Home Directory]

Assign a folder to transfer images to in the **[Local Path]** of the **[FTP Site Directory]**. Create an **[EOS]** folder immediately under the C drive. Enter **[C:\EOS]** in **[Local Path]**, and check **[Read]**, **[Write]**, and **[Log visits]**.

- Click the **[OK]** button and close the screen to finish FTP site settings.

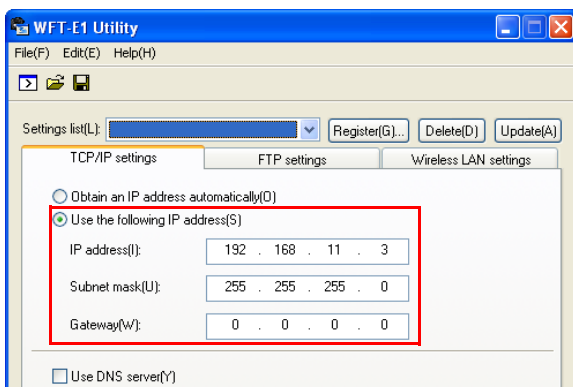
# Creating the WFT-E1 Settings File

Use the WFT-E1 Utility software included in the package to create the settings file to transfer images using a wired LAN.

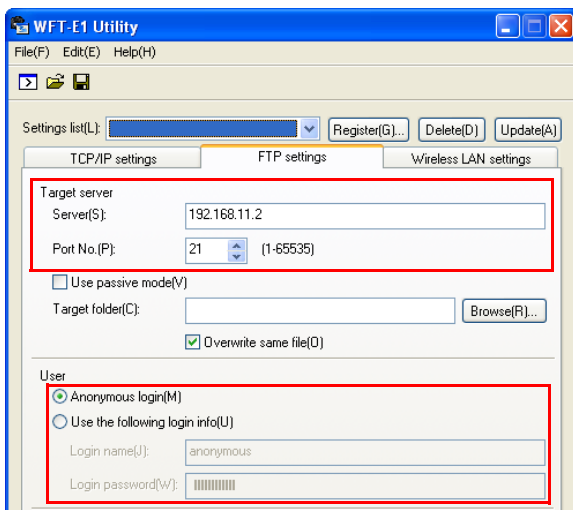
Start WFT-E1 Utility.exe and set up as follows. If the WFT-E1 Settings Wizard appears, click the [Cancel] button.

W

## Setting Up TCP/IP



## Setting Up FTP



- For the [User], checkmark [O] **Anonymous login**. To login to the FTP server, enter **anonymous** for the Login name, and enter **wft-e1@canon** for the password.

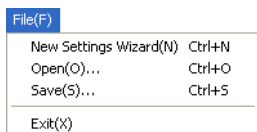
4

Wired LAN

## Setting Up a Wireless LAN

Settings are not necessary.

## Saving the Settings File



- Under the **[File]** menu, select **[Save]** to save the communication settings file to the memory card.
- Save the settings file to the root directory of the memory card without changing the file name.

# Setting Up the WFT-E1

Please read Chapter 2 “Setting Up the WFT-E1” in the PDF manual on the WFT-E1/E1A Utility Disk included in the package.  
Conduct the series of preparations described on pages 16 through 24, and download the settings file to the camera.



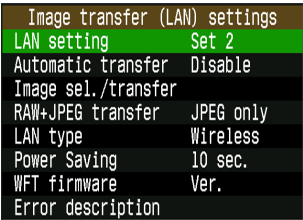
## Selecting the Settings File

**1 Select [Image transfer (LAN) settings] from the menu.**

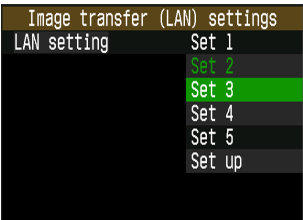
[Image transfer (LAN) settings] will not appear unless the WFT-E1 is connected to the camera, and both are turned on.



**2 Select [LAN setting].**



**3 Select Set No.**  
Select the Set No. in which the wired LAN settings file is loaded.



Wired LAN

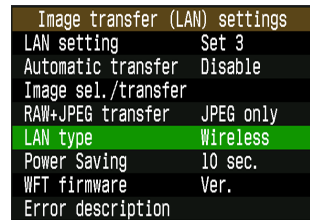
## Selecting the LAN Type

### 1 Select [Image transfer (LAN) settings] from the menu.

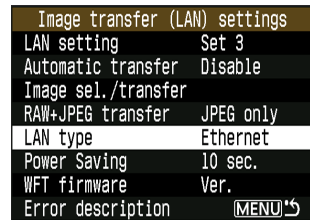
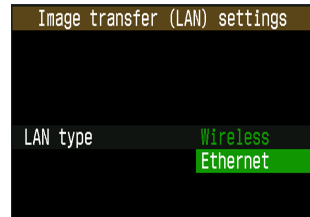
[Image transfer (LAN) settings] will not appear unless the WFT-E1 is connected to the camera, and both are turned on.



### 2 Select [LAN type].



### 3 Select [Ethernet].





# Checking the Connection Status

Check the connection status to the FTP server.

**If you connect the WFT-E1 directly to the FTP server, make sure to use a cross cable. If a straight cable is used, error No. 81 is displayed and you cannot transfer images.**

**When using a straight cable, connect the FTP server and the WFT-E1 via a hub or a router.**

Connect the FTP server and the WFT-E1, and turn the power on.

## Successful connection display



- The <3> lamp and the <4> lamp on the WFT-E1 will light up, and the LCD panel will show the <C>.
- After the period of time passes with no activity as set in the [Power Saving] menu, the <4> lamp will turn off and the <C> will also disappear from the LCD panel.

## Failed connection display



- The LCD panel will show <E> and an error number. The <C> and <3> lamps will also blink.
- See troubleshooting (p.103) to solve the problem.

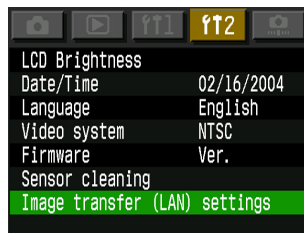
# Transferring Images to the FTP Server ■

This section uses automatic transfer as an example to explain how to transfer images to the FTP server.

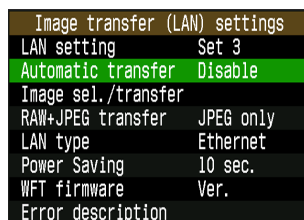
If a memory card is not installed in the camera, images cannot be transferred. Images will also be stored in the memory card, so insert a memory card with adequate available space.

## 1 Select [Image transfer (LAN) settings] from the menu.

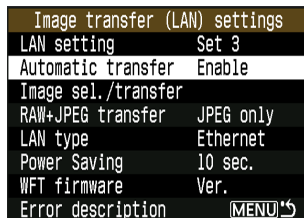
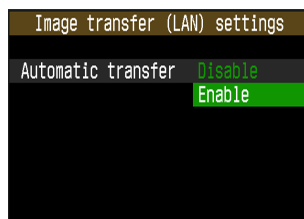
[Image transfer (LAN) settings] will not appear unless the WFT-E1 is connected to the camera, and both are turned on.



## 2 Select [Automatic transfer].



## 3 Select [Enable].



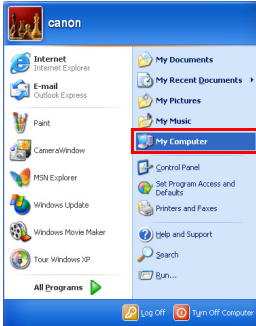
## 4 Take a picture.

► The <4> lamp will blink and captured image will be transferred to the FTP server.

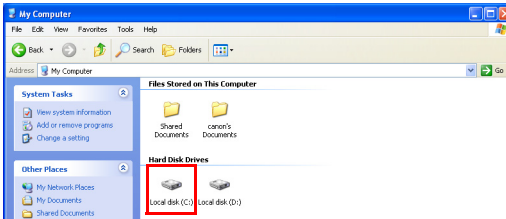
# Viewing Transferred Images on the FTP Server

Transferred images are saved in the folder on the FTP server that was created on page 52.

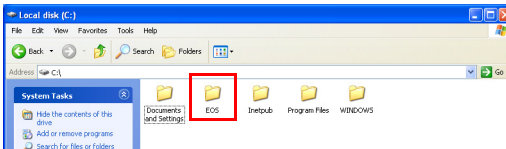
## 1 [Start] button → Select [My Computer].



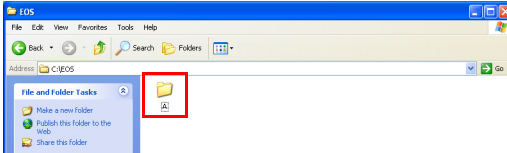
## 2 Double-click the [Local disk (C:)] icon in [Hard Disk Drives].



## 3 Double-click the [EOS] folder.

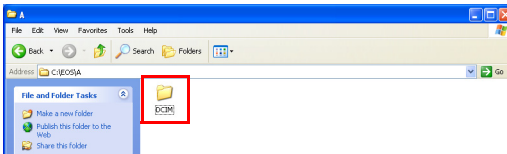


## 4 For the EOS-1D series, double-click the [A] folder.



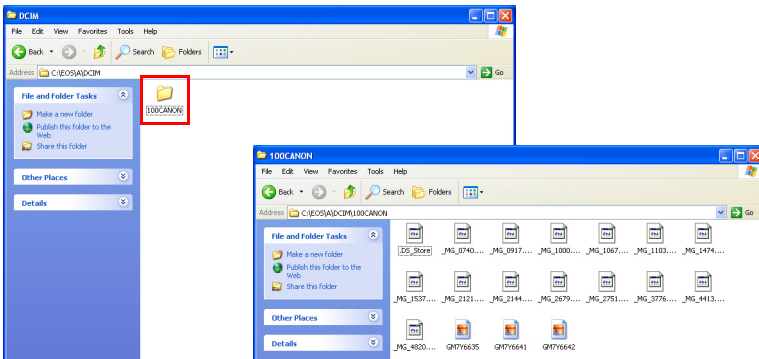
- The [A] folder contains images saved in the CF card. If the images saved in the SD card have been transferred, a [B] folder is automatically created and images will be saved there.

## 5 Double-click the [DCIM] folder.



## 6 Double-click the [\*\*\*CANON], the [\*\*\*EOS1D], or the [\*\*\*EOS5D] folder.

- Transferred image data will appear.



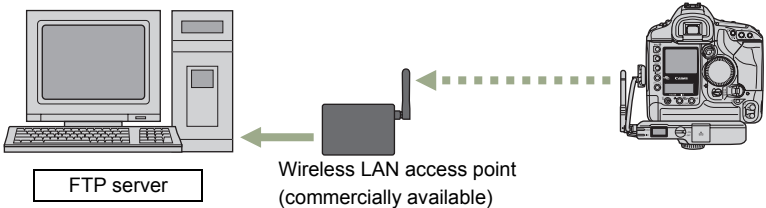
# Transferring Images Using a Wireless LAN

## Infrastructure Mode

Setting Up the Computer to Operate as an FTP Server .....	62
Setting Up the AirPort .....	63
Setting Up the Network .....	66
Creating the WFT-E1 Settings File.....	69
Setting Up the WFT-E1 .....	71
Checking the Connection Status .....	73
Transferring Images to the FTP Server.....	74
Viewing Transferred Images on the FTP Server .....	75

### Infrastructure Mode Overview

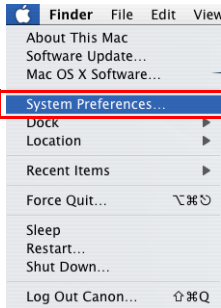
Images are transmitted to an FTP server via a wireless LAN access point.



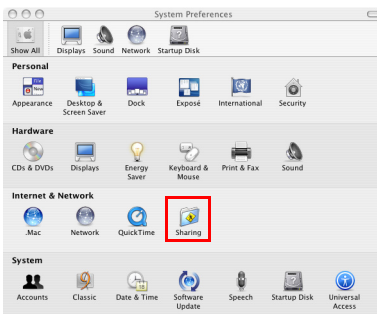
Connect a wireless LAN access point to an FTP server using a LAN cable, wireless LAN card or wireless LAN adapter.

# Setting Up the Computer to Operate as an FTP Server ■

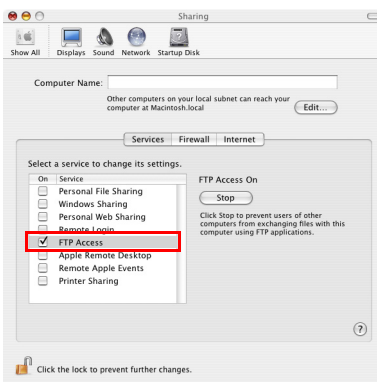
## 1 [Apple Menu] → Select [System Preferences].



► The [System Preferences] screen will appear. Click [Sharing].



## 2 Click the [Services] tab, and check [FTP Access].

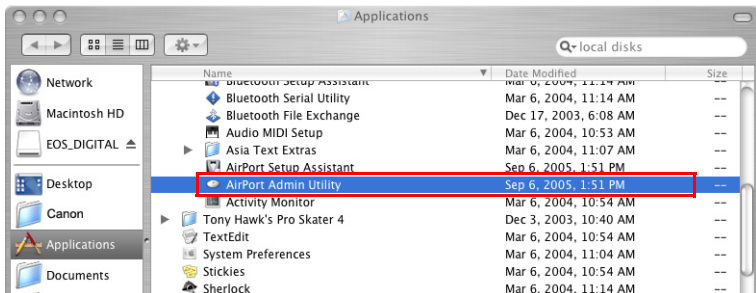


# Setting Up the AirPort

## 1 Open [Finder] to display [Applications].



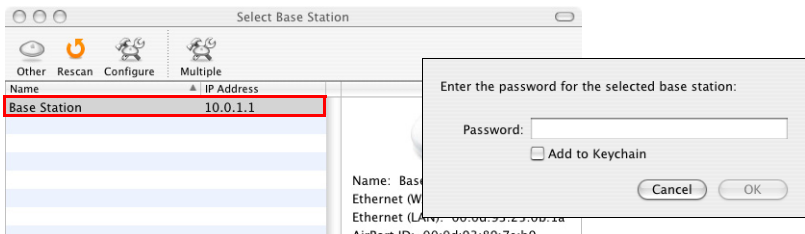
## 2 Open the [Utilities] folder and double-click [AirPort Admin Utility].



- ▶ The [Select Base Station] screen will appear.

## 3 Double-click the item in the [Name] section.

- ▶ A password entry screen will appear.



- Enter the password for the base station and click the [OK] button.
- ▶ The base-station settings screen will appear.
- If an error message appears and settings cannot be loaded, go to [Applications] then [Utilities] to start [AirPort Setup Assistant] to configure subsequent settings.

## 4 Click the [Show All Settings] button.

- Configure settings on the [AirPort] and the [Internet] tabs.

### Setting Up the [AirPort] Tab

- Configure settings on the [AirPort] tab as follows.
- Enter [EOSD] for [Name] for [Base Station] and [AirPort Network].

The screenshot shows the 'EOSD' window in AirPort Utility. The 'AirPort' tab is selected. On the left, there are buttons for 'Show Summary', 'Name and Password', 'Internet Connection', and 'Show All Settings'. The 'Show All Settings' button is highlighted. The main area shows the 'AirPort' tab with the following sections:

- Base Station:** Name: EOSD, Contact: , Location: . Below this are buttons for 'Change password...' and 'WAN Privacy...'.
- AirPort Network:** Name: EOSD. Below this is a checkbox for 'Create a closed network' (unchecked). Further down are 'Wireless Security: 40 bit WEP', 'Channel: Automatic', and 'Mode: 802.11b/g Compatible'. There are buttons for 'Change Wireless Security...', 'Wireless Options...', 'Revert', and 'Update'.

- Click the [Change password] button, enter “canon” in both textboxes, and click the [OK] button.

The 'Change password' dialog box is shown. It has two textboxes: 'New password:' and 'Verify:', both containing 'canon'. There are 'Cancel' and 'OK' buttons at the bottom.

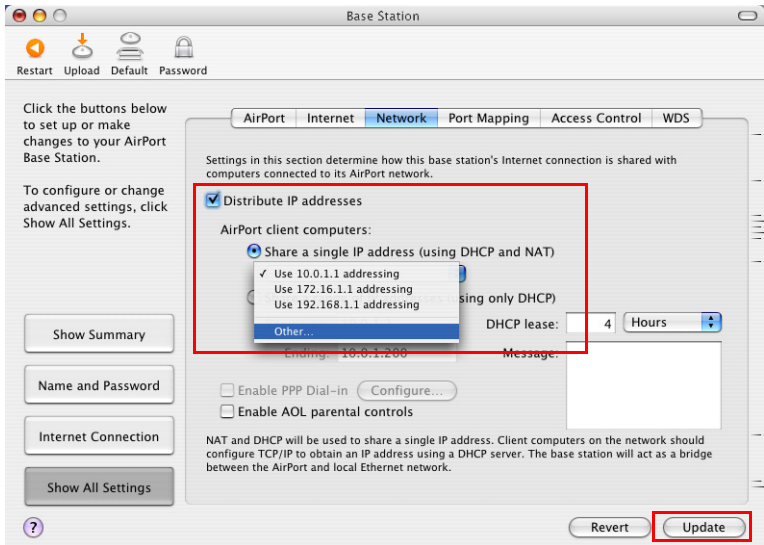
- Click the [Change Wireless Security] button, select [40 bit WEP], enter “canon” in both textboxes, and click the [OK] button.

The 'Change Wireless Security' dialog box is shown. It shows 'Wireless Security:' set to '40 bit WEP'. Below are 'Network Password:' and 'Verify Password:' textboxes, both containing 'canon'. There are 'Cancel' and 'OK' buttons at the bottom.

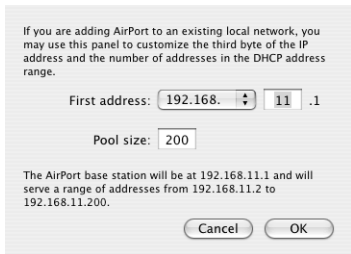


## Setting Up the [Network] Tab

- Check ☐ **Distribute IP addresses** and ☐ **Share a single IP address (using DHCP and NAT)** in the [Network] tab.
- Then, select **Other** from the pull-down menu.



- Configure settings as follows, and click the [OK] button.



- If the settings are done, click the **[Update]** button on the bottom right of the screen.

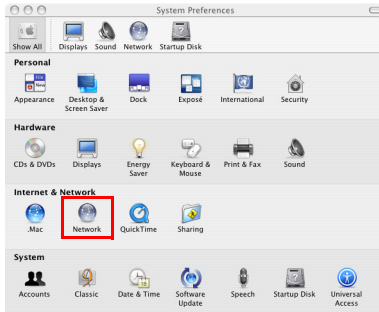


- ▶ The update execution screen will appear, and if completed, the base-station settings screen will disappear.

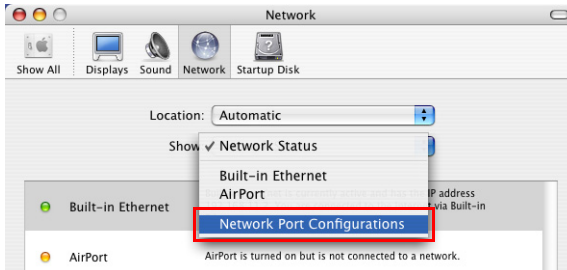


# Setting Up the Network

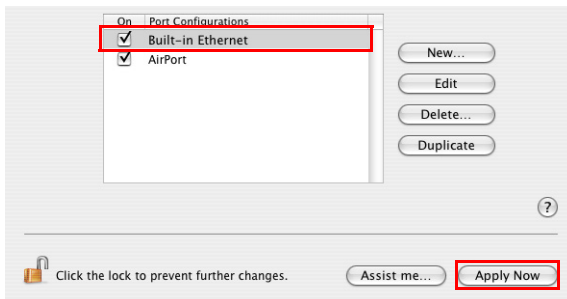
## 1 Click [Network].



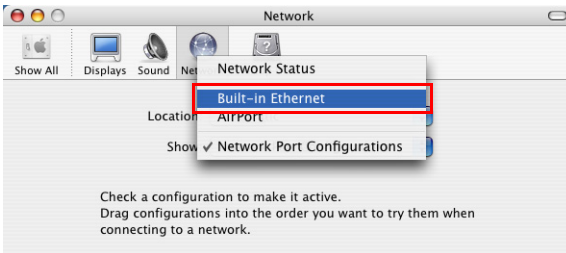
## 2 From the [Show] pull-down menu, select [Network Port Configurations].



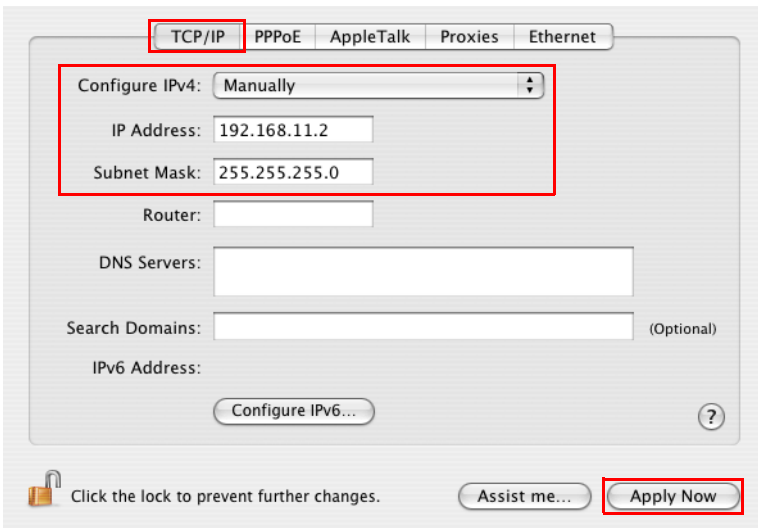
- Check [Built-in Ethernet], and click [Apply Now].



### 3 From the [Show] pull-down menu, select [Built-in Ethernet].



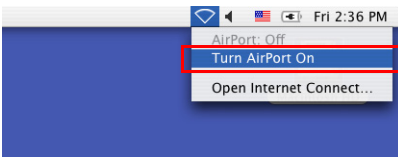
- Configure settings on the [TCP/IP] tab as follows.



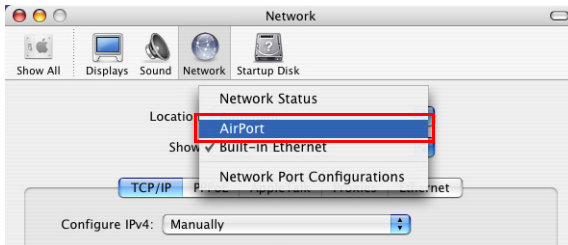
- If the settings are done, click the [Apply Now] button.
- Do not close the [Network] window yet.

### 4 Set [Turn AirPort On].

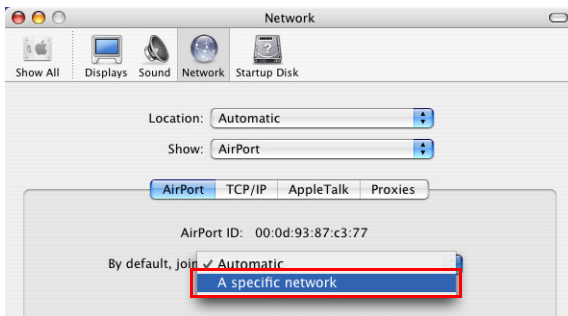
- Click the [AirPort] icon, and select [Turn AirPort On].



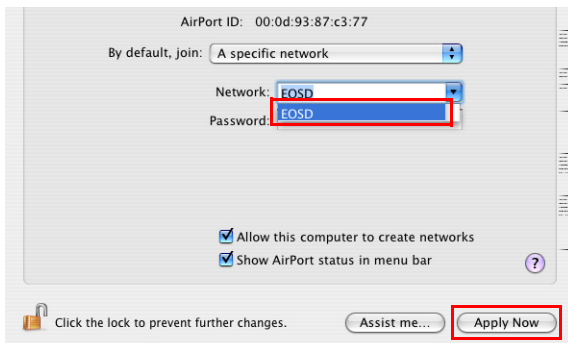
**5** From the [Show] pull-down menu, select [AirPort].



**6** From the [By default, join] pull-down menu, select [A specific network].



**7** From the [Network] pull-down menu, select [EOSD] and click the [Apply Now] button.

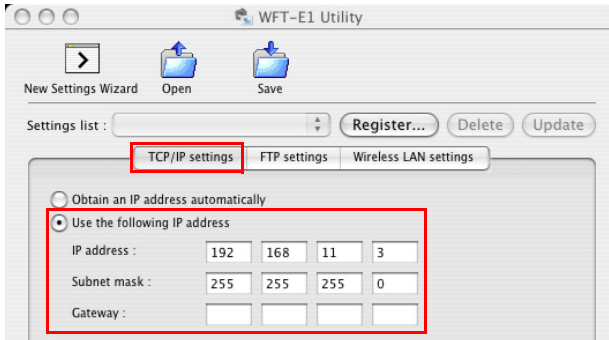


# Creating the WFT-E1 Settings File

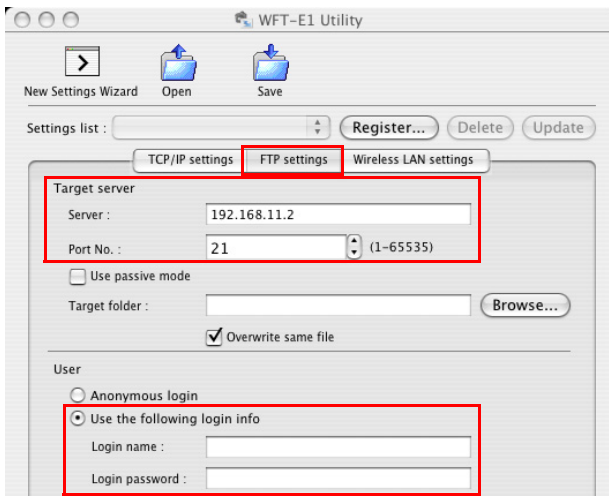
Use the WFT-E1 Utility software included in the package to create the settings file to transfer images using infrastructure mode.

Start the WFT-E1 Utility and set up as follows. If the WFT-E1 Settings Wizard appears, click the **[Cancel]** button.

## Setting Up TCP/IP

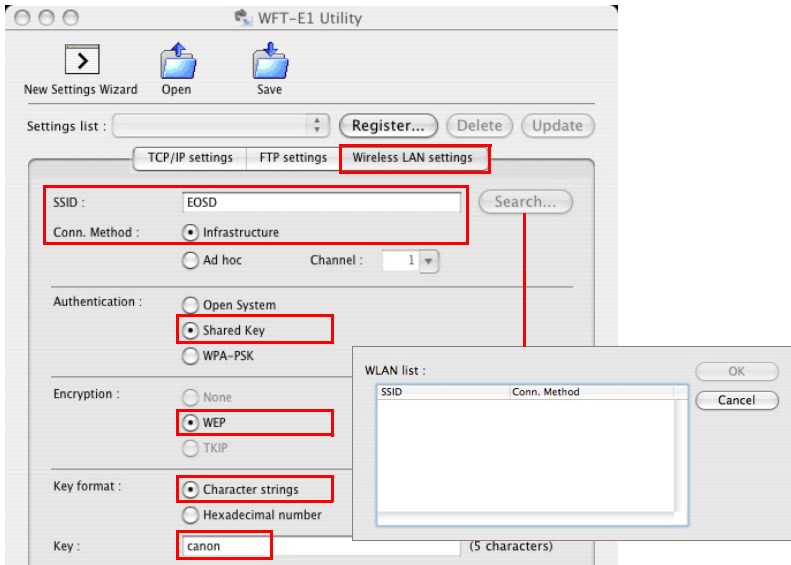


## Setting Up FTP



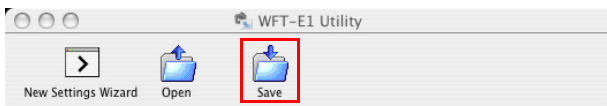
- Enter **[Login name]** and **[Login password]** the same way as for the **[Name]** and **[Password]** that appear when you select **[Apple Menu] → [System Preferences] → [Accounts]**. Without these settings, you cannot connect to the FTP server.

## Setting Up a Wireless LAN



- If your personal computer is connected to a wireless LAN access point or wireless LAN adapter, click the **[Search]** button to search within the personal computer's wireless LAN environment for a wireless LAN terminal being used nearby. The terminal's SSID will then be displayed. When you select the displayed SSID, the SSID and connection method and channel will be set automatically to connect to the wireless LAN terminal.
- In infrastructure mode, you cannot connect if the authentication method is set to **[Open System]**. Set it to **[Shared Key]** or **[WPA-PSK]**.
- If you set **[Wireless Security]** to **[40 bit WEP]** on page 64, set **[Encryption]** to **[WEP]** (the same for 128-bit WEP). If you set "canon" as the **[Network Password]**, check **[Character strings]** in **[Key format]**, and enter "canon" for **[Key]**.

## Saving the Settings File



- Click the **[Save]** button to save the settings file to a memory card.
- Save the settings file to the root directory of the memory card without changing the file name.

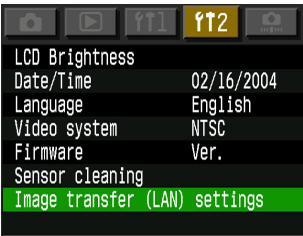
# Setting Up the WFT-E1

Please read Chapter 2 “Setting Up the WFT-E1” in the PDF manual on the WFT-E1/E1A Utility Disk included in the package.  
Conduct the series of preparations described on pages 16 through 24, and download the settings file to the camera.

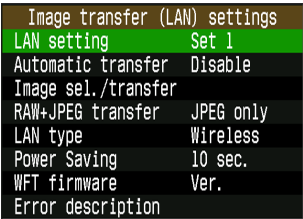
## Selecting the Settings File

### 1 Select [Image transfer (LAN) settings] from the menu.

[Image transfer (LAN) settings] will not appear unless the WFT-E1 is connected to the camera, and both are turned on.

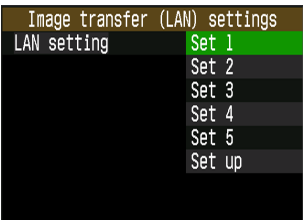


### 2 Select [LAN setting].



### 3 Select a set number.

Select the set number where the settings file is downloaded for infrastructure mode.



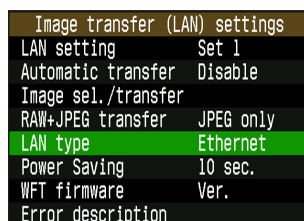
## Selecting the LAN Type

### 1 Select [Image transfer (LAN) settings] from the menu.

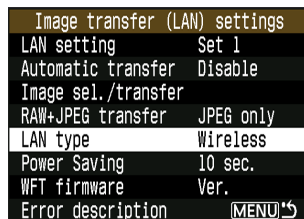
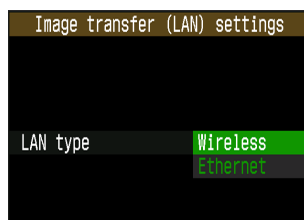
[Image transfer (LAN) settings] will not appear unless the WFT-E1 is connected to the camera, and both are turned on.



### 2 Select [LAN type].



### 3 Select [Wireless].





# Checking the Connection Status

Check the connection status with the wireless LAN access point.

Connect the FTP server and the wireless LAN access point, and turn the power on.

Connect the WFT-E1 and the camera, and turn the power on.

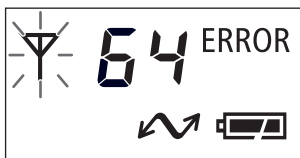
Check the connection when the WFT-E1 and the wireless LAN access point are close to each other — 3m/9.8ft or less.

## Successful connection display



- The <3> lamp and the <4> lamp on the WFT-E1 will light up, and the LCD panel will show the link speed (Mbps) and <B>.
- After the period of time passes with no activity as set in the [Power Saving] menu, the <4> lamp will turn off and the link speed and <B> will also disappear from the LCD panel.

## Failed connection display



- The LCD panel will show <E> and an error number. The <B> and <3> lamps will also blink.
- See troubleshooting (p.103) to solve the problem.

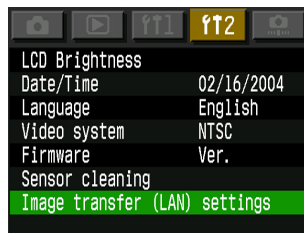
# Transferring Images to the FTP Server ■

This section uses automatic transfer as an example to explain how to transfer images to the FTP server.

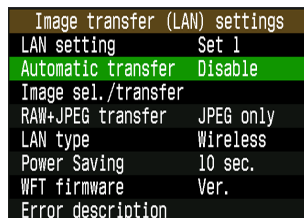
If a memory card is not installed in the camera, images cannot be transferred. Images will also be stored in the memory card, so insert a memory card with adequate available space.

## 1 Select [Image transfer (LAN) settings] from the menu.

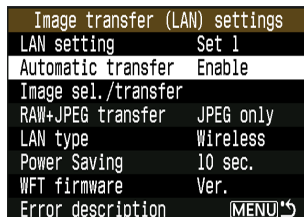
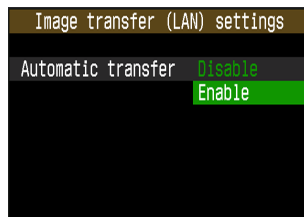
[Image transfer (LAN) settings] will not appear unless the WFT-E1 is connected to the camera, and both are turned on.



## 2 Select [Automatic transfer].



## 3 Select [Enable].

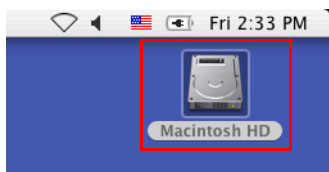


## 4 Take a picture.

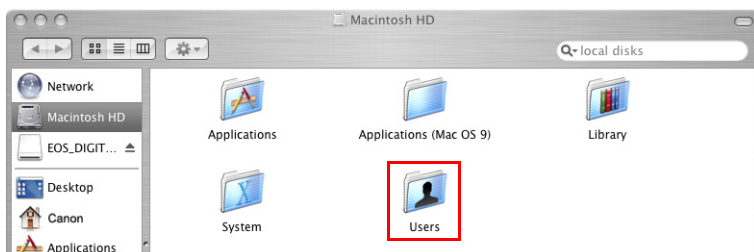
► The <4> lamp will blink and captured image will be transferred to the FTP server.

# Viewing Transferred Images on the FTP Server

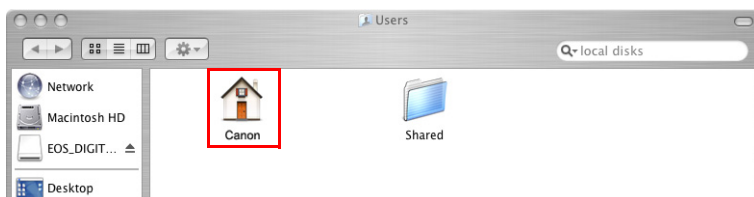
1 Double-click [Macintosh HD].



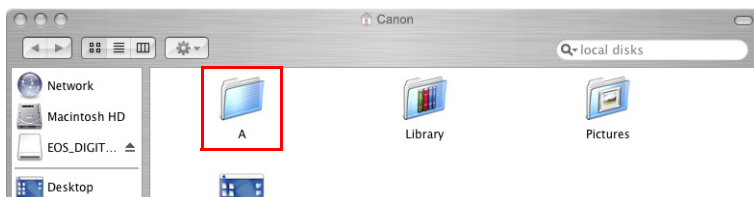
2 Double-click the [Users] folder.



3 Double-click the user folder you logged in to.

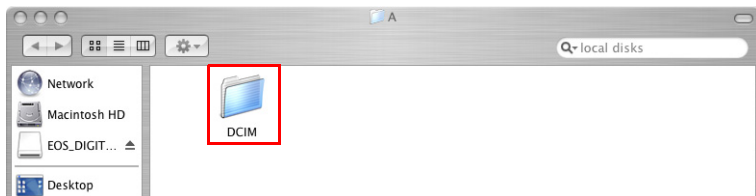


4 For the EOS-1D series, double-click the [A] folder.



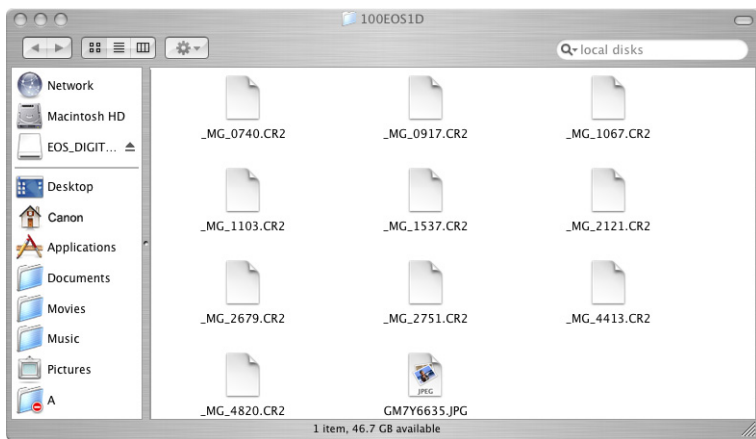
- The [A] folder contains images saved on the CF card. If the images saved on the SD card have been transferred, a [B] folder is automatically created and images will be saved there.

## 5 Double-click the [DCIM] folder.



## 6 Double-click the [\*\*\*CANON], the [\*\*\*EOS1D], or the [\*\*\*EOS5D] folder.

► Transferred image data will appear.



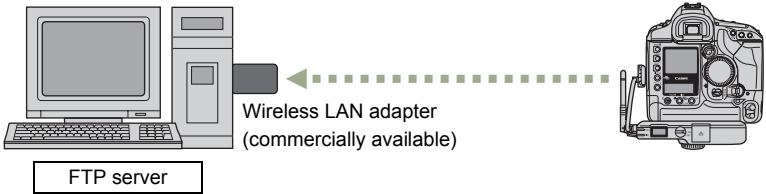
# Transferring Images Using a Wireless LAN

## Ad Hoc Mode

Setting Up the Computer to Operate as an FTP Server .....	78
Setting Up a Network .....	79
Creating the WFT-E1 Settings File.....	83
Setting Up the WFT-E1 .....	85
Checking the Connection Status .....	87
Transferring Images to the FTP Server.....	88
Viewing Transferred Images on the FTP Server .....	89

### Ad Hoc Mode Overview

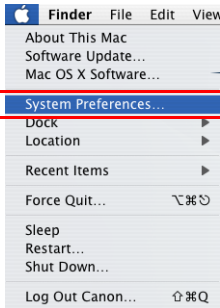
Images are directly transmitted to an FTP server equipped with a wireless LAN card or a wireless LAN adapter.



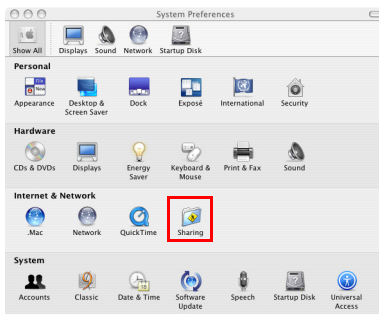
Install drivers for a wireless LAN card or a wireless LAN adapter on an FTP server.

# Setting Up the Computer to Operate as an FTP Server ■

## 1 [Apple Menu] → Select [System Preferences].

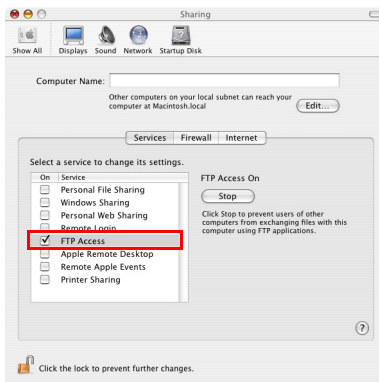


► The [System Preferences] screen will appear. Click [Sharing].



## 2 Click the [Services] tab, and check ☐ FTP Access.

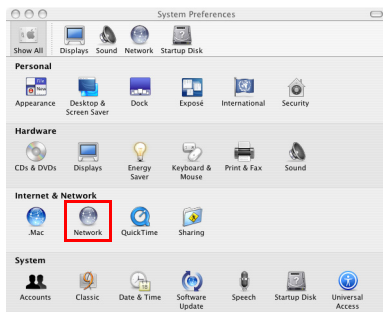
- When the settings are done, click [Show All] on the upper left to return to the [System Preferences] screen.



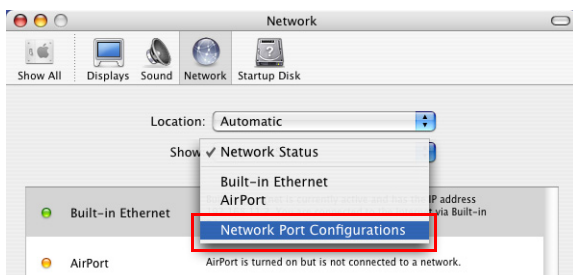
# Setting Up a Network

## Setting Up a Network

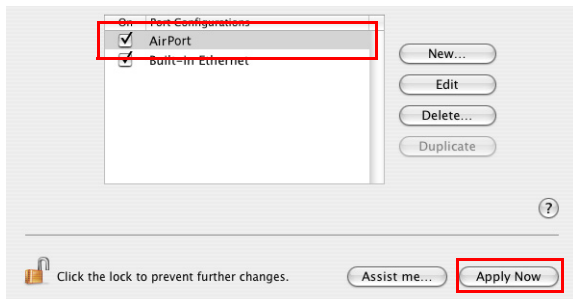
### 1 Click [Network].



### 2 From the [Show] pull-down menu, select [Network Port Configurations].



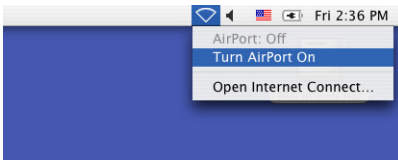
- Check [AirPort], and drag [AirPort] to move it to the top.



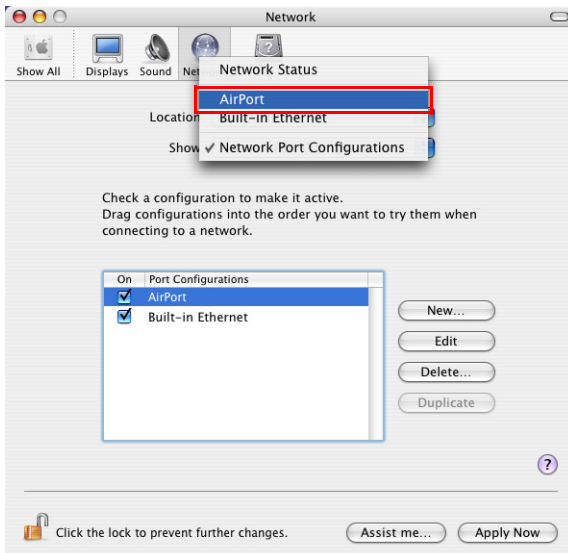
- Click the [Apply Now] button.
- Do not close the [Network] window yet.



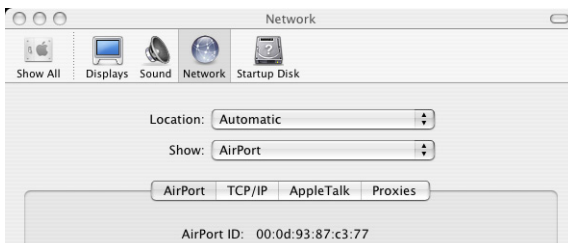
- 3 Click the [AirPort] icon, and select [Turn AirPort On].



- 4 From the [Show] pull-down menu, select [AirPort].



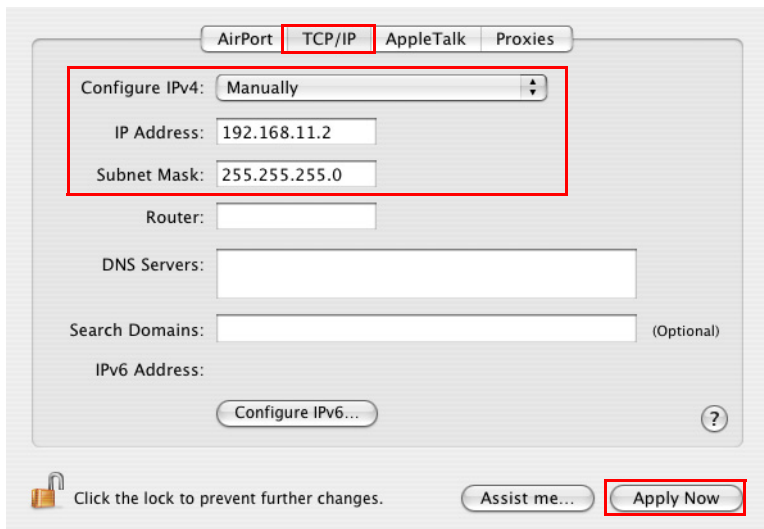
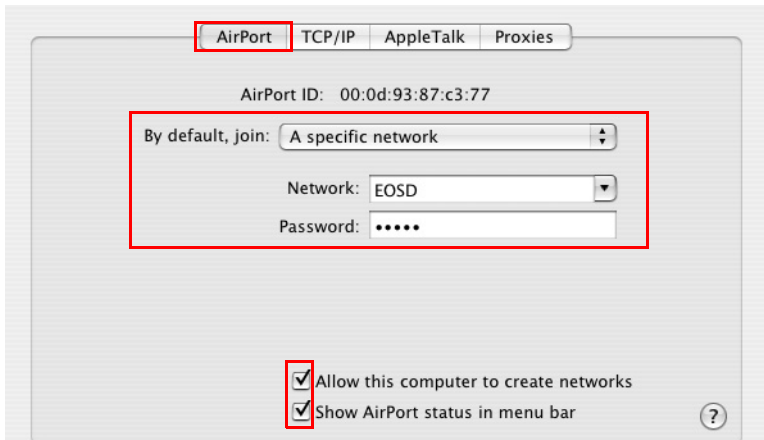
- The AirPort network settings screen will appear.



- On the next page, configure the settings on the [AirPort] tab and the [TCP/IP] tab.



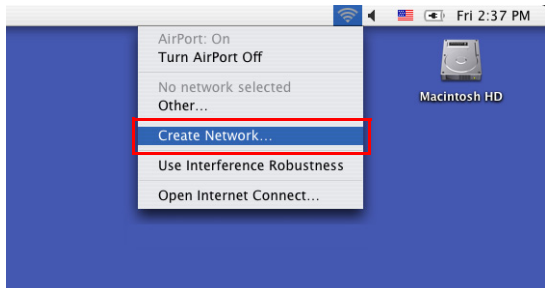
- Configure the settings on the **[AirPort]** tab and the **[TCP/IP]** tab as follows.
- Enter “**canon**” for **[Password]** on the AirPort tab.



- If the settings are done, click the **[Apply Now]** button to close the **[Network]** window.

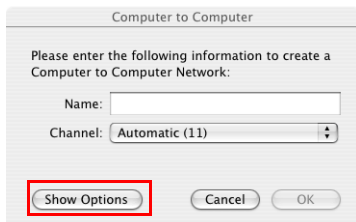
## Creating a Network

- 1 Click the **[AirPort]** icon, and select **[Create Network...]**.



- 2 Configure settings in the **[Computer to Computer]** window.

- Click the **[Show Options]** button, and set up as follows.



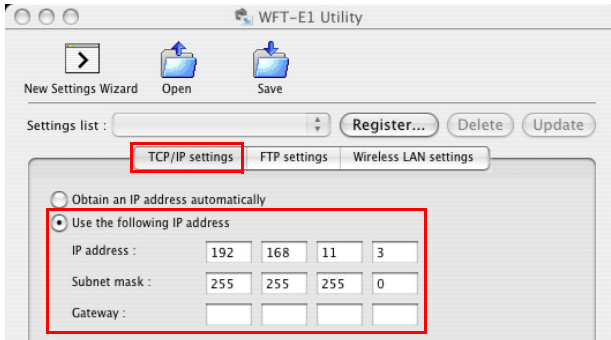
- Enter "canon" for **[Password]** and **[Confirm]**.
- If the settings are done, click the **[OK]** button to close the window.

# Creating the WFT-E1 Settings File ■

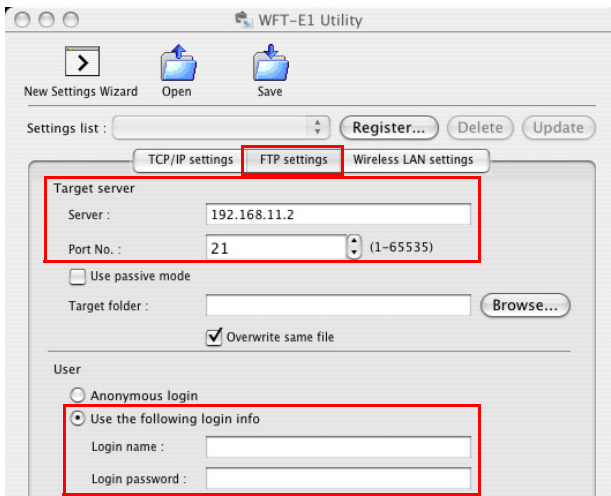
Use the WFT-E1 Utility software included in the package to create the settings file to transfer images using ad hoc mode.

Start the WFT-E1 Utility and set up as follows. If the WFT-E1 Settings Wizard appears, click the **[Cancel]** button.

## Setting Up TCP/IP

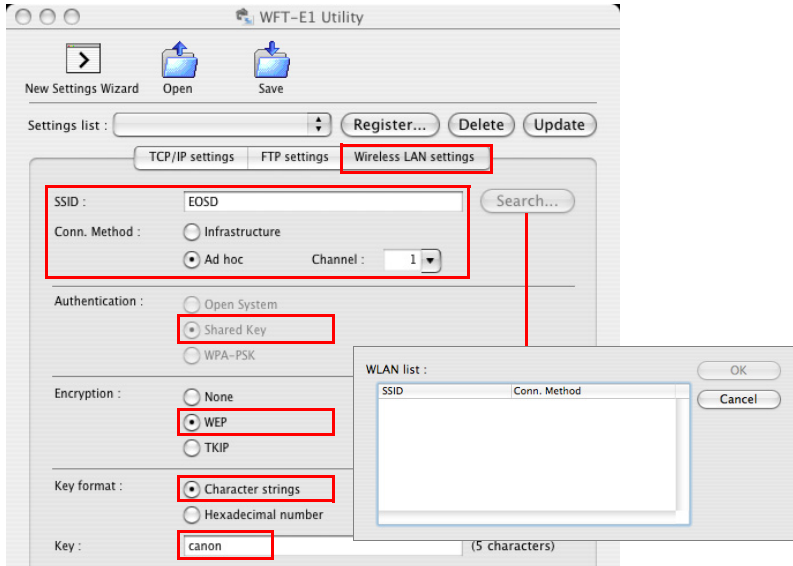


## Setting Up FTP



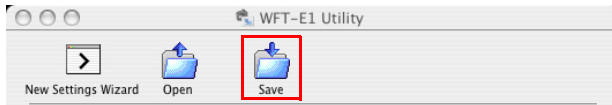
- Enter the **[Login name]** and **[Login password]** the same way as in the **[Name]** and **[Password]** that appear when you select **[Apple Menu] → [System Preferences] → [Accounts]**. Without these settings, you cannot connect to the FTP server.

## Setting Up a Wireless LAN



- Configure the same settings as in [Computer to Computer] on page 82. If you entered [EOSD] for [Name] on page 82, enter EOSD for [SSID]. For [Channel], set the same [Channel] as on page 82. If you set “canon” for the password, enter “canon” for [Key].

## Saving the Settings File



- Click the [Save] button to save the settings file to a memory card.
- Save the settings file to the root directory of the memory card without changing the file name.

# Setting Up the WFT-E1

Please read Chapter 2 “Setting Up the WFT-E1” in the PDF manual on the WFT-E1/E1A Utility Disk included in the package.  
Conduct the series of preparations described on pages 16 through 24, and download the settings file to the camera.

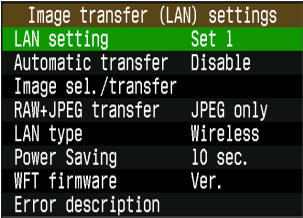
## Selecting the Settings File

**1 Select [Image transfer (LAN) settings] from the menu.**

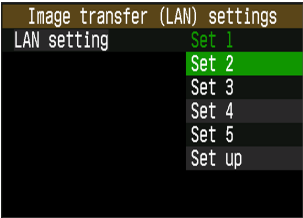
[Image transfer (LAN) settings] will not appear unless the WFT-E1 is connected to the camera, and both are turned on.



**2 Select [LAN setting].**



**3 Select Set No.**  
Select the Set No. in which the ad hoc settings file is loaded.

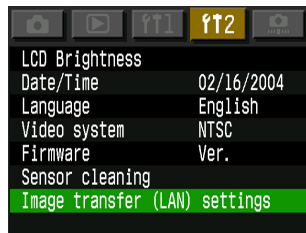


Ad Hoc Mode

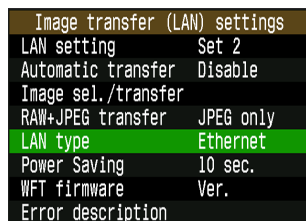
## Selecting the LAN Type

### 1 Select [Image transfer (LAN) settings] from the menu.

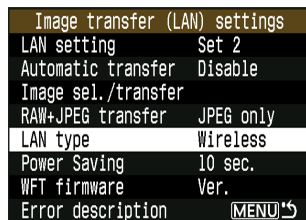
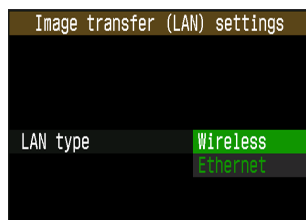
[Image transfer (LAN) settings] will not appear unless the WFT-E1 is connected to the camera, and both are turned on.



### 2 Select [LAN type].



### 3 Select [Wireless].



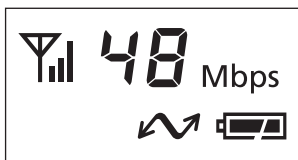
# Checking the Connection Status

Check the connection status to the wireless LAN card or the wireless LAN adapter. Connect the wireless LAN card or the wireless LAN adapter to the FTP server, and turn the power on. Connect the WFT-E1 and the camera, and turn the power on.

Check the connection when the WFT-E1 and the wireless LAN card or the wireless LAN adapter are close to each other — 3m/9.8ft or less.

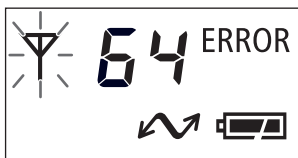


## Successful connection display



- The <3> lamp and the <4> lamp on the WFT-E1 will light up, and the LCD panel will show the link speed (Mbps) and <B>.
- After the period of time passes with no activity as set in the **[Power Saving]** menu, the <4> lamp will turn off and the link speed and <B> will also disappear from the LCD panel.

## Failed connection display



- The LCD panel will show <E> and an error number. The <B> and <3> lamps will also blink.
- See troubleshooting (p.103) to solve the problem.

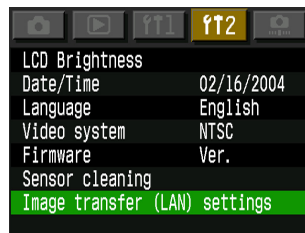
# Transferring Images to the FTP Server ■

This section uses automatic transfer as an example to explain how to transfer images to the FTP server.

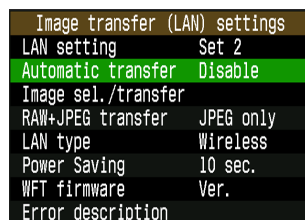
If a memory card is not installed in the camera, images cannot be transferred. Images will also be stored in the memory card, so insert a memory card with adequate available space.

## 1 Select [Image transfer (LAN) settings] from the menu.

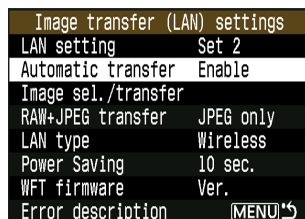
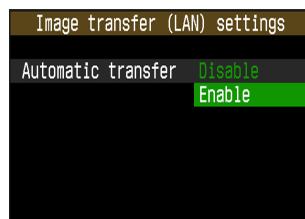
[Image transfer (LAN) settings] will not appear unless the WFT-E1 is connected to the camera, and both are turned on.



## 2 Select [Automatic transfer].



## 3 Select [Enable].



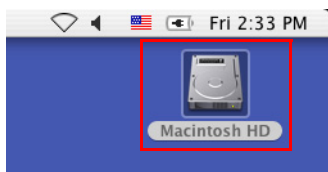
## 4 Take a picture.

► The <4> lamp will blink and captured image will be transferred to the FTP server.

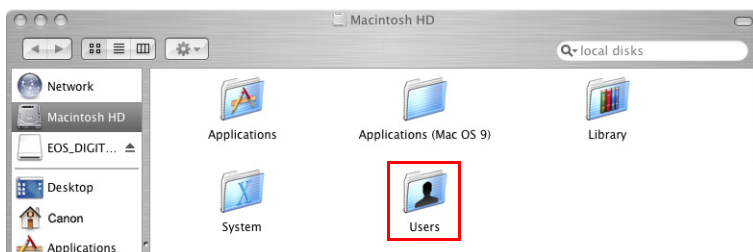


# Viewing Transferred Images on the FTP Server

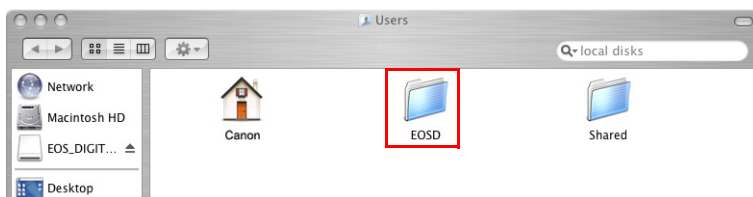
1 Double-click [Macintosh HD].



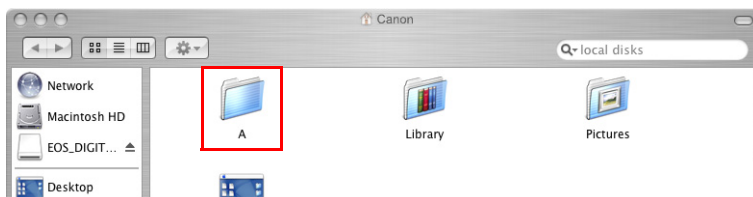
2 Double-click the [Users] folder.



3 Double-click the [EOSD] folder.



4 For the EOS-1D series, double-click the [A] folder.



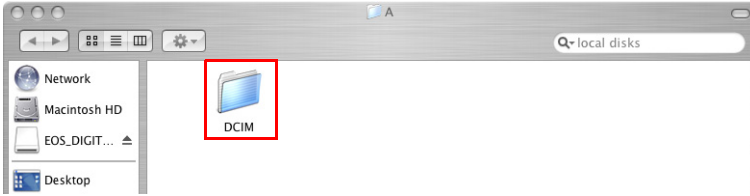
- The [A] folder contains images saved on the CF card. If the images saved on the SD card have been transferred, a [B] folder is automatically created and images will be saved there.



2

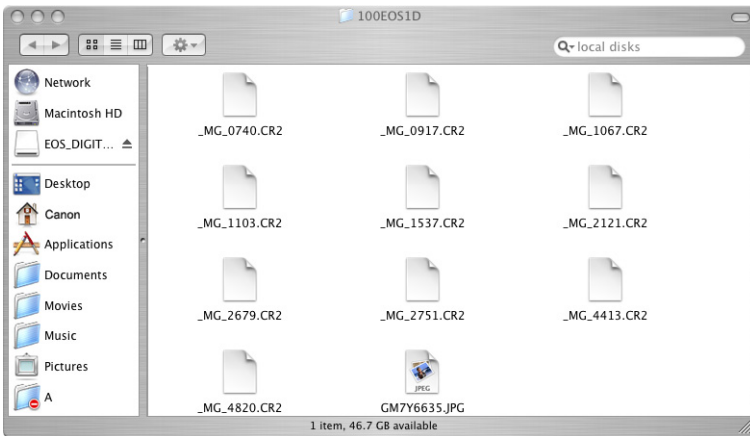
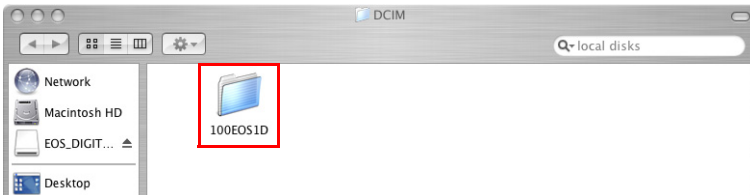
Ad Hoc Mode

## 5 Double-click the [DCIM] folder.



## 6 Double-click the [\*\*\*CANON], the [\*\*\*EOS1D], or the [\*\*\*EOS5D] folder.

► Transferred image data will appear.



# Transferring Images Using a Wired LAN

Setting Up the Computer to Operate as an FTP Server .....	92
Setting Up a Network .....	93
Creating the WFT-E1 Settings File.....	95
Setting Up the WFT-E1 .....	97
Checking the Connection Status .....	99
Transferring Images to the FTP Server.....	100
Viewing Transferred Images on the FTP Server .....	101

## Wired LAN Overview

Connect the WFT-E1 to the FTP server with a LAN cable to transfer images.

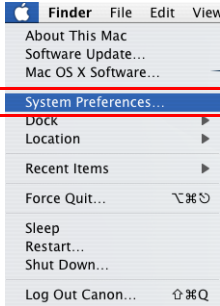


When connecting the WFT-E1 directly to the FTP server, make sure to use a cross cable. If a straight cable is used, error No. 81 will be displayed and you will not be able to transfer images. When using a straight cable, connect the FTP server and the WFT-E1 via a hub or a router.

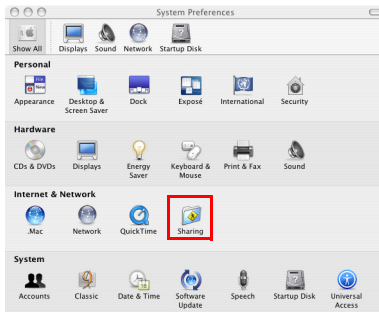
# Setting Up the Computer to Operate as an FTP Server ■

## Setting Up Sharing

1 [Apple Menu] → Select [System Preferences].

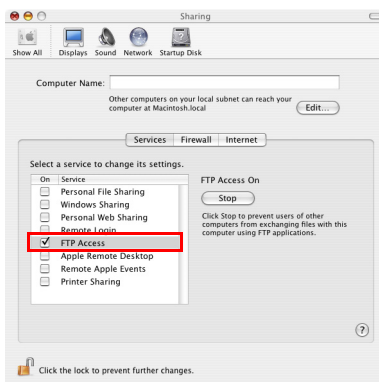


► The [System Preferences] screen will appear. Click [Sharing].



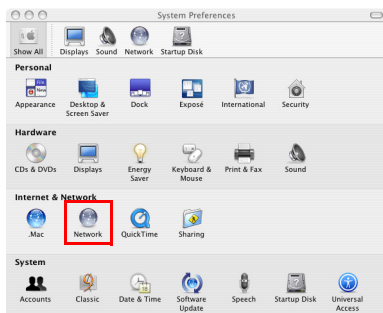
2 Click the [Services] tab, and check ☐ FTP Access.

- When the settings are done, click [Show All] on the upper left to return to the [System Preferences] screen.

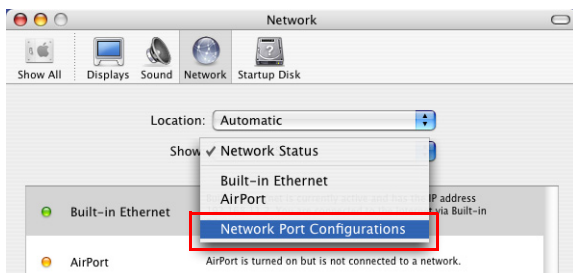


# Setting Up a Network

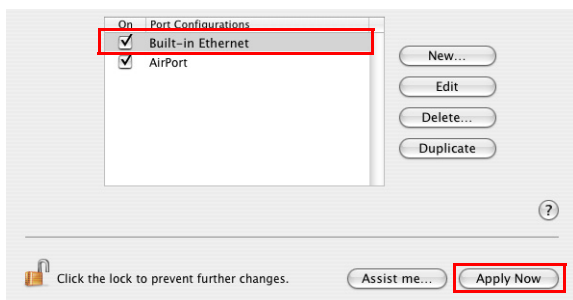
## 1 Click [Network].



## 2 From the [Show] pull-down menu, select [Network Port Configurations].

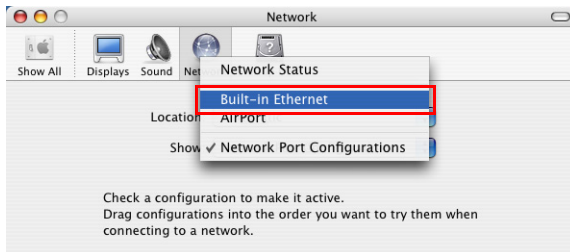


- Check [Built-in Ethernet].

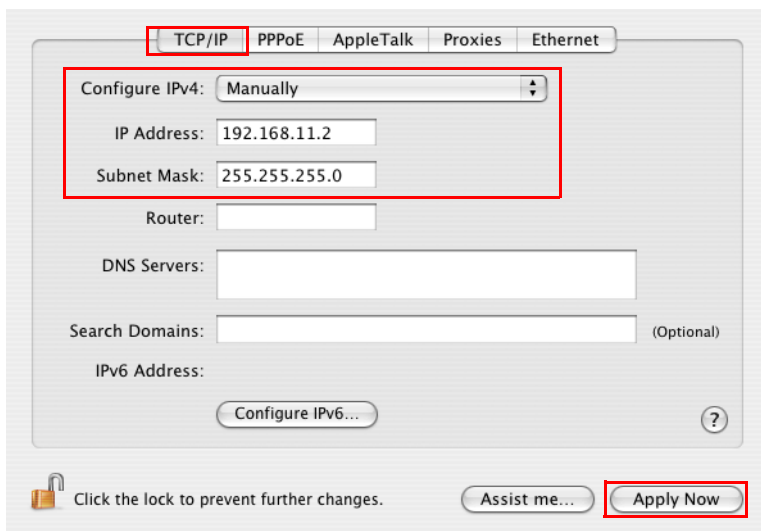


- Click the [Apply Now] button.

### 3 From the [Show] pull-down menu, select [Built-in Ethernet].



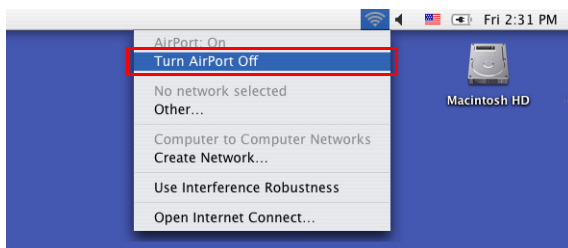
- Configure settings on the [TCP/IP] tab as follows.



- If the settings are done, click the [Apply Now] button to close the [Network] window.

### 4 Set [Turn AirPort Off].

- Click the [AirPort] icon, and select [Turn AirPort Off].

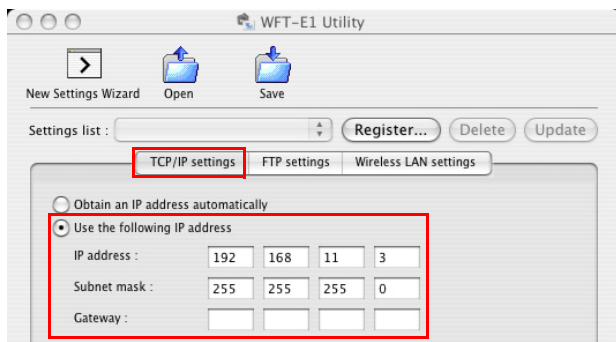


# Creating the WFT-E1 Settings File

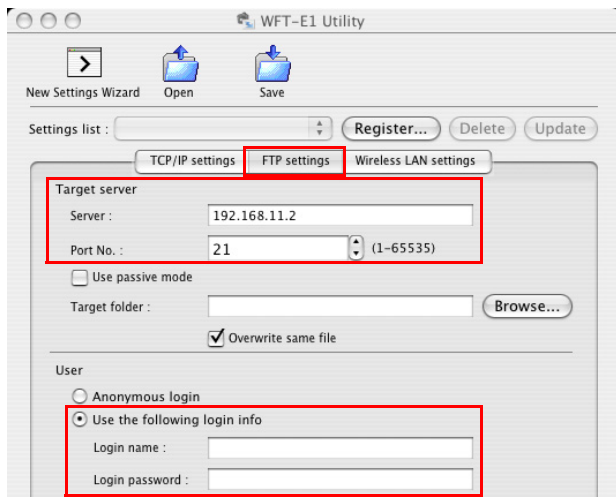
Use the WFT-E1 Utility software included in the package to create the settings file to transfer images using a wired LAN.

Start the WFT-E1 Utility and set up as follows. If the WFT-E1 Settings Wizard appears, click the [Cancel] button.

## Setting Up TCP/IP



## Setting Up FTP

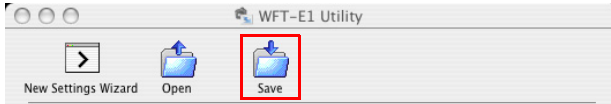


- Enter the [Login name] and [Login password] the same way as in the [Name] and [Password] that appear when you select [Apple Menu] → [System Preferences] → [Accounts]. Without these settings, you cannot connect to the FTP server.

## Setting Up a Wireless LAN

Setting are not necessary.

## Saving the Settings File



- Click the [**Save**] button to save the settings file to a memory card.
- Save the settings file to the root directory of the memory card without changing the file name.



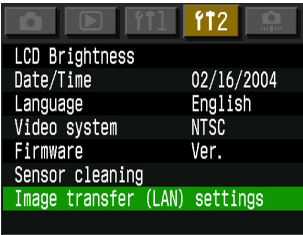
# Setting Up the WFT-E1

Please read Chapter 2 “Setting Up the WFT-E1” in the PDF manual on the WFT-E1/E1A Utility Disk included in the package.  
Conduct the series of preparations described on pages 16 through 24, and download the settings file to the camera.

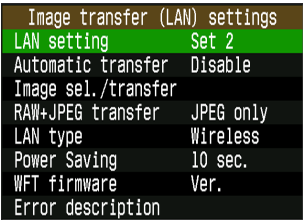
## Selecting the Settings File

**1 Select [Image transfer (LAN) settings] from the menu.**

[Image transfer (LAN) settings] will not appear unless the WFT-E1 is connected to the camera, and both are turned on.

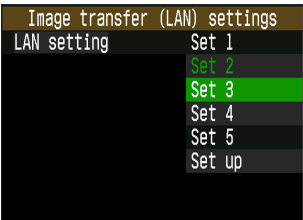


**2 Select [LAN setting].**



**3 Select Set No.**

Select the Set No. in which the wired LAN settings file is loaded.



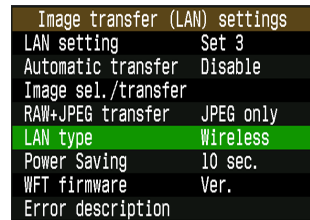
## Selecting the LAN Type

### 1 Select [Image transfer (LAN) settings] from the menu.

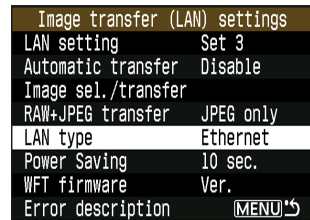
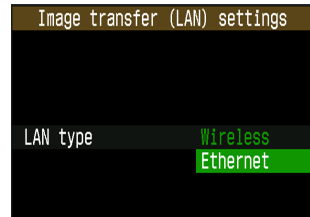
[Image transfer (LAN) settings] will not appear unless the WFT-E1 is connected to the camera, and both are turned on.



### 2 Select [LAN type].



### 3 Select [Ethernet].



# Checking the Connection Status

Check the connection status to the FTP server.

**If you connect the WFT-E1 directly to the FTP server, make sure to use a cross cable. If a straight cable is used, error No. 81 is displayed and you cannot transfer images.**

**When using a straight cable, connect the FTP server and the WFT-E1 via a hub or a router.**

Connect the FTP server and the WFT-E1, and turn the power on.

## Successful connection display



- The <3> lamp and the <4> lamp on the WFT-E1 will light up, and the LCD panel will show the <C>.
- After the period of time passes with no activity as set in the [Power Saving] menu, the <4> lamp will turn off and the <C> will also disappear from the LCD panel.

## Failed connection display



- The LCD panel will show <E> and an error number. The <C> and <3> lamps will also blink.
- See troubleshooting (p.103) to solve the problem.

# Transferring Images to the FTP Server ■

This section uses automatic transfer as an example to explain how to transfer images to the FTP server.

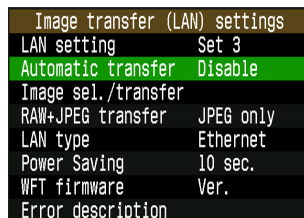
If a memory card is not installed in the camera, images cannot be transferred. Images will also be stored in the memory card, so insert a memory card with adequate available space.

## 1 Select [Image transfer (LAN) settings] from the menu.

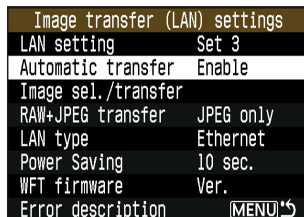
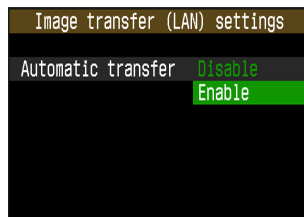
[Image transfer (LAN) settings] will not appear unless the WFT-E1 is connected to the camera, and both are turned on.



## 2 Select [Automatic transfer].



## 3 Select [Enable].

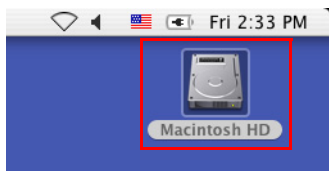


## 4 Take a picture.

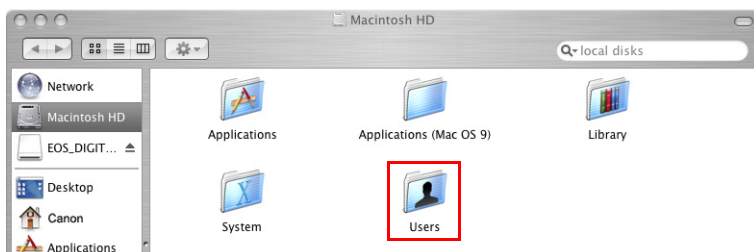
► The <4> lamp will blink and captured image will be transferred to the FTP server.

# Viewing Transferred Images on the FTP Server

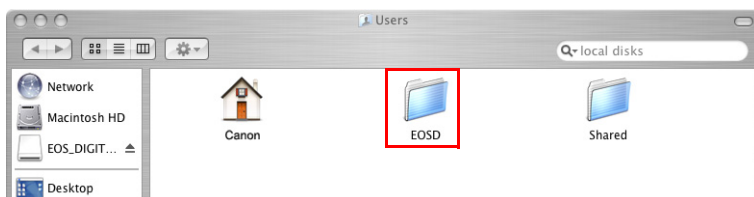
1 Double-click [Macintosh HD].



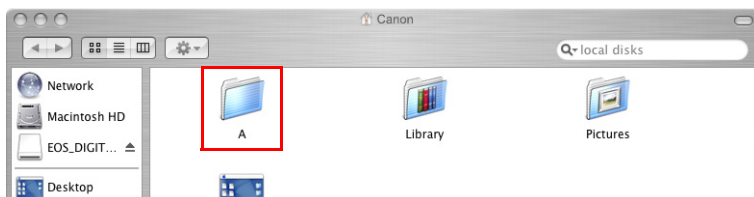
2 Double-click the [Users] folder.



3 Double-click the [EOSD] folder.

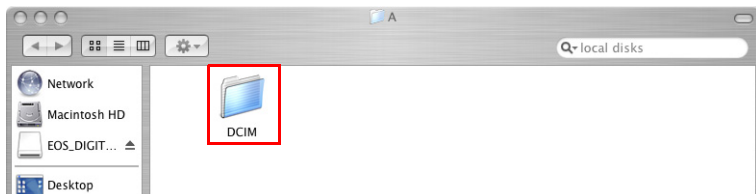


4 For the EOS-1D series, double-click the [A] folder.



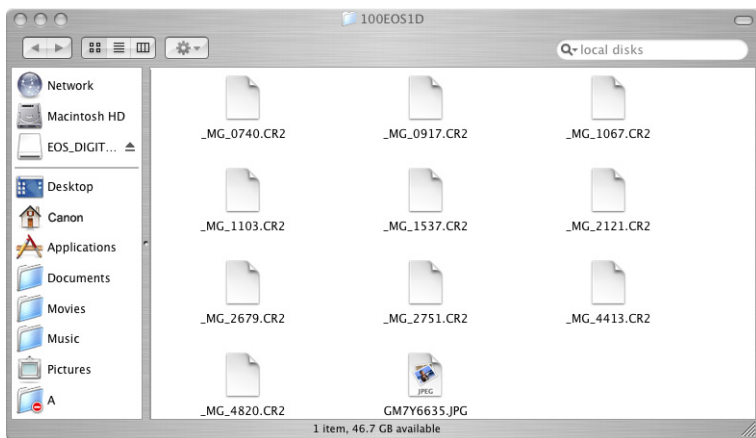
- The [A] folder contains images saved on the CF card. If the images saved on the SD card have been transferred, a [B] folder is automatically created and images will be saved there.

## 5 Double-click the [DCIM] folder.



## 6 Double-click the [\*\*\*CANON], the [\*\*\*EOS1D], or the [\*\*\*EOS5D] folder.

► Transferred image data will appear.



# Troubleshooting

If an error number appears on the WFT-E1's display panel, refer to the countermeasure examples in this chapter to remove the source of the error. Click the error number listed below to jump to the correspondent item.

<b>01</b> (p.104)				
<b>21</b> (p.104)	<b>22</b> (p.104)	<b>23</b> (p.105)	<b>24</b> (p.106)	<b>25</b> (p.107)
<b>41</b> (p.107)	<b>42</b> (p.109)	<b>43</b> (p.109)	<b>44</b> (p.109)	<b>45</b> (p.110)
<b>46</b> (p.110)	<b>47</b> (p.111)			
<b>61</b> (p.111)	<b>62</b> (p.112)	<b>63</b> (p.112)	<b>64</b> (p.113)	<b>65</b> (p.113)
<b>81</b> (p.113)	<b>99</b> (p.114)			

## 01: Problem with camera cable connection

### 1 Is the camera securely connected to the WFT-E1?

- ▶ Reconnect the cable between the camera and the WFT-E1. The cable may also be broken, so try connecting using a different cable.
- ▶ For EOS-1D series cameras, use an IEEE1394 cable.

### 2 Is the camera set for auto power off?

- ▶ Disable the camera's auto power off function. If Error 01 still appears, turn off the camera power and the WFT-E1 power and turn them on again.

### 3 Is the camera's power switch in the <OFF> position?

- ▶ Turn on the camera power and the WFT-E1 power.

## 21: No address assigned by DHCP server

### WFT-E1

#### 1 The WFT-E1 is set to [Use DHCP Server]. Is this setting all right?

- ▶ If you are not using the DHCP server, change the settings of the WFT-E1 to not use the DHCP server. (p.116 [DHCP Server])

### DHCP server

#### 2 Is the DHCP server's power on?

- ▶ Turn the DHCP server's power on.

#### 3 Are there enough addresses assigned by the DHCP server?

- ▶ Increase the number of addresses assigned by the DHCP server.
- ▶ Remove terminals from the network to which addresses are assigned from the DHCP server to reduce the number of addresses.

#### 4 Is the DHCP server functioning normally?

- ▶ Check the settings of the DHCP server to make sure if it's functioning normally as a DHCP server.
- ▶ If there is a network administrator, ask that person to change the status of the DHCP server so it is available.

## 22: No response from DNS server

### WFT-E1

#### 1 The WFT-E1 is set to [Use DNS Server]. Is this setting all right?

- ▶ If you are not using the DNS server, change the settings of the WFT-E1 to not use the DNS server. (p.117 [DNS Server])



**2 Is the correct IP address set for the DNS server in the WFT-E1?**

- ▶ Set the same IP address as for the DNS server to be used for the WFT-E1. (p.117 [Address])

**DNS server****3 Is the DNS server's power on?**

- ▶ Turn the DNS server's power on.

**4 Are the correct IP address and corresponding name set in the DNS server?**

- ▶ Set the correct IP address and corresponding name in the DNS server.

**5 Is the DNS server functioning normally?**

- ▶ Check the settings of the DNS server to make sure if it's functioning normally as a DNS server.
- ▶ If there is a network administrator, ask that person to change the status of the DNS server so it is available.

**Overall network****6 Is a router or a similar device with a gateway function used on the network you are trying to connect to?**

- ▶ If there is a network administrator, ask that person for the gateway address for the network, and set it in the WFT-E1. (p.116 [Gateway])
- ▶ Set the correct gateway address for all network devices including the WFT-E1.

**23: Duplicate IP address****WFT-E1****1 Is a device connected to the same network as the WFT-E1 using the same IP address as the WFT-E1?**

- ▶ Change the IP address for the WFT-E1 to avoid duplication of IP address with another device connected to the same network. (p.116 [IP Address]) Or, change the IP address for the device with the duplicate address.
- ▶ If the WFT-E1 is set to use an IP address under a network environment using a DHCP server, set the WFT-E1 to use the DHCP server. (p.116 [DHCP Server])

## 24: No response from proxy server

### WFT-E1

- 1 **The WFT-E1 is set to [Use Proxy]. Is this setting all right?**
  - ▶ If a proxy server is not being used, set it to not use the proxy server. (p.120 **[Proxy]**)
- 2 **Are the proxy server's [Address] and [Port No.] set in the WFT-E1 the same as for the proxy server?**
  - ▶ Set the same address and port No. as the proxy server in the WFT-E1. (p.120 **[Proxy]**)
- 3 **In the WFT-E1's [Proxy] settings, is [Server Name] the only one that is entered?**
  - ▶ If the proxy server's **[Address]** is not set in the WFT-E1, set it to use the DNS server and enter the DNS server address. (p.117 **[DNS Server]**, **[Address]**)  
Also, make sure that the server name and port No. are entered correctly for the proxy server to be used.

### Proxy server

- 4 **Is the proxy server's power on?**
  - ▶ Turn the proxy server's power on.
- 5 **Is the proxy server functioning normally?**
  - ▶ Check the settings of the proxy server to make sure if it's functioning normally as a proxy server.
  - ▶ If there is a network administrator, ask that person for the proxy server's address or server name and port No., and set them in the WFT-E1.

### Overall network

- 6 **Is a router or a similar device with a gateway function used for the network you are trying to connect to?**
  - ▶ If there is a network administrator, ask that person for the gateway address for the network, and set it in the WFT-E1. (p.116 **[Gateway]**)
  - ▶ Set the correct gateway address for all network devices including the WFT-E1.

## 25: Other terminal has set the same IP address

- 1 **Is a device connected to the same network as the WFT-E1 using the same IP address as the WFT-E1?**
  - ▶ This error occurs when the WFT-E1 is connected to a network and another device with the same IP address as the WFT-E1 connects to the network. Change the IP address for the WFT-E1 to avoid duplicating the IP address with another device connected to the same network. (p.116 [IP Address])  
Or, change the IP address for the device with a duplicate address.

## 41: Cannot connect to FTP server

### WFT-E1

- 1 **Is the correct IP address set for the FTP server in the WFT-E1?**
  - ▶ Check the IP address for the FTP server using the following method, and set the same IP address as for the FTP server in the WFT-E1. (p.118 [Target Server])  
For Windows 2000 and Windows XP, check the IP address from the [Command Prompt] (p.22).  
For Mac OS X, go to [Finder] → [Applications] → [Terminal], enter `ifconfig -a` and press the [Return] key. In [inet] of [en0], `***.***.***.***` is the IP address.
- 2 **Is the FTP server's [Port No.] set in the WFT-E1 the same as for the FTP server?**
  - ▶ The Port No. is usually 21. Set the same port No. for both the WFT-E1 and the FTP server. Set the FTP server's port No. in the WFT-E1. (p.118 [Target Server])
- 3 **If only the FTP server's [Server Name] is set in the WFT-E1, are the DNS server's settings also configured?**
  - ▶ If the FTP server's [Address] is not set in the WFT-E1, set it to use the DNS server and enter the DNS server address. (p.117 [DNS Server], [Address])  
Also, make sure that the server name is correctly entered for the FTP server to be used.

### FTP server

- 4 **Is the FTP server functioning normally?**
  - ▶ If the computer is not set to function as an FTP server, read this manual to set it to function as an FTP server.
  - ▶ If there is a network administrator, ask that person for the FTP server's address and port No., and set them in the WFT-E1.

**5 Is the FTP server's power on?**

- ▶ Turn the FTP server's power on. The power may be turned off in energy saving mode.

**6 Is the FTP server's IP address the same as [Address] for the FTP server in the WFT-E1?**

- ▶ Make sure the IP address set in the FTP server and the IP address for the FTP server set in the WFT-E1 are the same.

**7 Is a firewall or other security software enabled?**

- ▶ Depending on the security software, a firewall may limit connections to the FTP server. Change the firewall settings to allow connections to the FTP server.
- ▶ You may be able to connect to the FTP server by setting the WFT-E1 to **[Use Passive Mode]**.

**8 Are you connecting to the FTP server via a broadband router?**

- ▶ Depending on the broadband router, a firewall may limit connections to the FTP server. Change the firewall settings to allow connections to the FTP server.
- ▶ You may be able to connect to the FTP server by setting the WFT-E1 to **[Use Passive Mode]**.

**9 If you are using Windows XP Service Pack 2, is it set not to connect to the FTP server in [Windows Firewall]?**

- ▶ See "Changing Firewall Settings" in this manual to change the settings to allow connections to the FTP server. (p.12)

## Overall network

**10 Is a router or a similar device with a gateway function used for the network you are trying to connect to?**

- ▶ If there is a network administrator, ask that person for the gateway address for the network, and set it in the WFT-E1. (p.116 **[Gateway]**)
- ▶ Set the correct gateway address for all network devices including the WFT-E1.

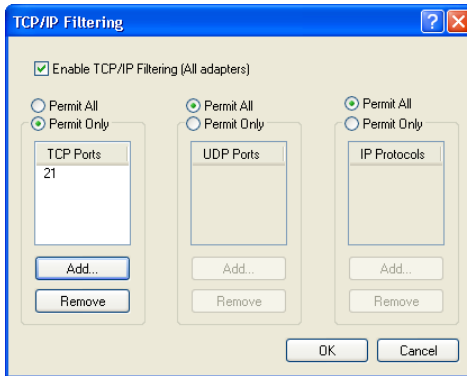
## 42: FTP server rejected connection

### FTP server

**1 Is the FTP server set to allow particular IP addresses only?**

- ▶ Change the FTP server settings to allow connections with the TCP/IP [IP address] set in the WFT-E1.

For Windows 2000 and Windows XP, go to **[Start]** button → **[Control Panel]** → double-click **[Network Connections]** → right-click **[Local Area Connection]** → **[Properties]** → double-click **[Internet Protocol (TCP/IP)]** → **[Advanced]** button → **[Options]** tab → double-click **[TCP/IP filtering]** → ☐ **Permit Only** → **[Add]** button → enter TCP port **[21]** → **[OK]** button.



## 43: Cannot connect to FTP server. Error code received from server.

### FTP server

**1 Are you trying to connect to the FTP server using more than the set maximum number of simultaneous connections?**

- ▶ Reduce the number of network devices connecting to the FTP server, or increase the maximum number of devices that can connect to the FTP server using the following procedure.
- ▶ For Windows 2000 and Windows XP, increase **[Limited To]** on the **[FTP Site]** tab (p.18).

## 44: Cannot disconnect FTP server. Error code received from server.

This error appears if it fails to disconnect from the FTP server for some reason. Turn off the FTP server's power, the camera's power, and the WFT-E1's power, and then turn them on again.

## 45: Cannot login to FTP server. Error code received from server.

### WFT-E1

#### 1 Is the [Login name] set in the WFT-E1 correct?

- ▶ Check the login name to log in to the FTP server. Make sure there are no differences between upper- and lower-case characters, and set the correct login name in the WFT-E1. (p.119 [Login name])  
For Windows 2000 and Windows XP, if anonymous is used as the login name, check if the FTP server is set to allow connections with an anonymous login name. For Mac OS X, go to [Apple] menu → [System Preferences] → [Accounts], and enter [Name] and [Password].

#### 2 Is the [Login password] set in the WFT-E1 correct?

- ▶ If a login password is set in the FTP server, make sure there are no differences between upper- and lower-case characters, and set the correct login name in the WFT-E1. (p.119 [Login name])

### FTP server

#### 3 Are the FTP server's file access privileges set to allow read/write/log visits?

- ▶ For Windows 2000 and Windows XP, check [☐Read], [☐Write], and [☐Log visits] in the [Home Directory] tab (p.18).  
For Mac OS X, click the target folder, go to the menu's [File] → [Get Info]. In [Ownership & Permissions] in the screen that appears, change the [You can] setting to [Read & Write].

## 46: For the data session, error code received from the FTP server

### FTP server

#### 1 The FTP server cut off the connection.

- ▶ Restart the FTP server.

#### 2 Are the FTP server's file access privileges set to allow read/write/log visits?

- ▶ For Windows 2000 and Windows XP, check [☐Read], [☐Write], and [☐Log visits] in the [Home Directory] tab (p.18).  
For Mac OS X, click the target folder, go to the menu's [File] → [Get Info]. In [Ownership & Permissions] in the screen that appears, change the [You can] setting to [Read & Write].

### **3 Did you allow access privilege to the FTP server's target folder?**

- ▶ Set the access privilege for the target folder in the FTP server to be able to save images transferred from the WFT-E1.
- ▶ For Windows 2000 and Windows XP, set access privileges in the properties of the target folder.  
For Mac OS X, click the target folder, go to the menu's **[File] → [Get Info]**. In **[Ownership & Permissions]** in the screen that appears, change the **[You can]** setting to **[Read & Write]**.

### **4 Is the server's power on?**

- ▶ Turn the server's power on. The power may be turned off in energy saving mode.

### **5 Is the FTP server's hard disk full?**

- ▶ Increase available space on the hard disk.

## **47: Image file transfer completion not confirmed by FTP server**

This error appears if it fails to receive a confirmation of image file transfer completion from the FTP server for some reason.

Turn off the FTP server's power, the camera's power, and WFT-E1's power, and then turn them on again.

## **61: Same SSID wireless LAN terminal not found**

### **1 Are there any obstacles blocking the path between the WFT-E1 and the antenna of the wireless LAN access point (or the wireless LAN terminal)?**

- ▶ Move the WFT-E1 and the antenna of the wireless LAN access point (or the wireless LAN terminal) so there is a clear path between them.
- ▶ Use the ERA-E1 Extended Range Antenna for the WFT-E1 (sold separately).

### **2 After a wireless LAN connection is cut off between the WFT-E1 and the wireless LAN access point (or the wireless LAN terminal) for some reason, they are not able to connect again.**

- ▶ Turn off the camera's power and the WFT-E1's power, and then turn them on again.

## **WFT-E1**

### **3 Does the WFT-E1 have the same SSID setting as in the wireless LAN access point?**

- ▶ Check the SSID in the wireless LAN access point, and set the same SSID in the WFT-E1. (p.121 **[SSID]**)

### **4 Is the WFT-E1's antenna loose?**

- ▶ Make sure that the WFT-E1's antenna connection is secure.

## Wireless LAN access point

- 5 **Is the wireless LAN access point's power on?**
  - ▶ Turn the wireless LAN access point's power on.
- 6 **If you are using an IEEE802.11a wireless LAN access point, is the wireless LAN access point fixed for IEEE802.11a?**
  - ▶ Set the wireless LAN access point to allow connections with IEEE802.11b/g.
- 7 **If you are filtering by MAC address, did you register the WFT-E1's MAC address in the wireless LAN access point?**
  - ▶ Register the WFT-E1's MAC address (p.121 [MAC Address]) in the wireless LAN access point.

## 62: No response from wireless LAN terminal

### WFT-E1

- 1 **Is the WFT-E1 set to connect in infrastructure mode?**
  - ▶ Set the WFT-E1 to connect via ad hoc. (p.121 [Advanced settings])
- 2 **Is the WFT-E1's antenna loose?**
  - ▶ Make sure that the WFT-E1's antenna connection is secure.

### Wireless LAN terminal

- 3 **Is there a wireless LAN terminal nearby to connect via ad hoc?**
  - ▶ Prepare a wireless LAN terminal set up to connect via ad hoc near the WFT-E1.

### FTP server

- 4 **Is the FTP server that is connected to (or with a built-in) a wireless LAN terminal powered on?**
  - ▶ Turn the FTP server's power on to be able to connect via ad hoc.

## 63: Wireless LAN authentication failed

- 1 **Are the WFT-E1 and the wireless LAN access point set to have the same authentication method?**
  - ▶ Available authentication methods for the WFT-E1 are [Open System], [Shared key], and [WPA-PSK]. (p.121 [Advanced settings])
  - ▶ To use infrastructure mode for AirPort, you cannot connect using the [Open System] method. Set a [Shared key] in the WFT-E1. (p.70, p.121 [Advanced settings])
- 2 **Are the WFT-E1 and the wireless LAN access point set to have the same encryption key for authentication?**
  - ▶ Make sure there are no differences between upper- and lower-case characters, and set the correct encryption key for authentication in the WFT-E1 and the wireless LAN access point. (p.19, 23, 64, 70, and 121 [Advanced settings])
- 3 **If you are filtering by MAC address, did you register the WFT-E1's MAC address in the wireless LAN access point?**
  - ▶ Register the WFT-E1's MAC address (p.121 [MAC Address]) in the wireless LAN access point.



## 64: Cannot connect to wireless LAN terminal

- 1 **Are the WFT-E1 and the wireless LAN access point set to have the same encryption method?**
  - ▶ Available encryption methods for the WFT-E1 are [WEP] and [TKIP]. (p.121 [Advanced settings])
- 2 **If you are filtering by MAC address, did you register the WFT-E1's MAC address in the wireless LAN access point?**
  - ▶ Register the WFT-E1's MAC address (p.121 [MAC Address]) in the wireless LAN access point.

## 65: Wireless LAN connection lost

- 1 **Are there any obstacles blocking the path between the WFT-E1 and the antenna of the wireless LAN access point (or the wireless LAN terminal)?**
  - ▶ Move the WFT-E1 and the antenna of the wireless LAN access point (or the wireless LAN terminal) so there is a clear path between them.
  - ▶ Use the ERA-E1 Extended Range Antenna for the WFT-E1 (sold separately).
- 2 **After a wireless LAN connection is cut off between the WFT-E1 and the wireless LAN access point (or the wireless LAN terminal) for some reason, they are not able to connect again.**

(Accesses from other terminals may be concentrated on the wireless LAN access point, a microwave oven may be in use nearby, or the weather is poor.)

  - ▶ Turn off the camera's power and the WFT-E1's power, and then turn them on again.

## WFT-E1

- 3 **Is the WFT-E1's antenna loose?**
  - ▶ Make sure that the WFT-E1's antenna connection is secure.

## 81: Wired LAN connection lost

- 1 **Is the LAN cable securely connected?**
  - ▶ Reconnect the LAN cable between the WFT-E1 and the server. The cable may also be broken, so try connecting using a different cable.
- 2 **In regard to LAN cables, are you correctly using a straight cable or a cross cable?**
  - ▶ To connect the WFT-E1 and the server directly, use a cross cable. To connect them via a hub or a router, use a straight cable.
- 3 **Is the hub or the router's power on?**
  - ▶ Turn the hub or the router's power on.
- 4 **Is the server's power on?**
  - ▶ Turn the server's power on. The power may be turned off in energy saving mode.

## 99

### WFT-E1

**1 A problem with error numbers other than 01-81 has occurred.**

- ▶ Turn the WFT-E1's power <OFF>, remove its battery and insert it again. In case of error 99, the error description will not appear even if you select [**Error description**] on the display panel.

# **Reference: Changing the LAN Settings with the Camera**

---

The settings file loaded in the camera can be modified using the menu screen. This chapter explains the menu structure centering on the menu options that appear on the menu screens.

# Setting TCP/IP

## DHCP Server

[Image transfer (LAN) settings] → [LAN setting] → [Set up] → [TCP/IP] → [DHCP server]: Select No use or Use.

## IP Address

[Image transfer (LAN) settings] → [LAN setting] → [Set up] → [TCP/IP] → [IP address]: Enter the number.

- Enter the number in the same way as for the [Date/Time].

## Subnet Mask

[Image transfer (LAN) settings] → [LAN setting] → [Set up] → [TCP/IP] → [Subnet mask]: Enter the number.

- Enter the number in the same way as for the [Date/Time].

## Gateway

[Image transfer (LAN) settings] → [LAN setting] → [Set up] → [TCP/IP] → [Gateway]: Enter the number.

- Enter the number in the same way as for the [Date/Time].

# Setting the DNS Server

## DNS Server

[Image transfer (LAN) settings] → [LAN setting] → [Set up] → [DNS server] → [DNS server]: Select No use or Use.

## Address

[Image transfer (LAN) settings] → [LAN setting] → [Set up] → [DNS server] → [Address]: Enter the number.

- Enter the number if you use a DNS server.
- Enter the number in the same way as for the [Date/Time].

# Setting the FTP Server

## Target Server

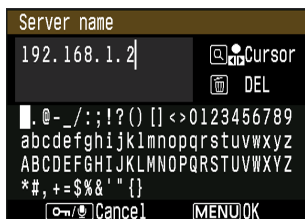
### [Server name]

[Image transfer (LAN) settings] → [LAN setting] → [Set up] → [FTP server] → [Target server] → [Server name]: Enter server name or address.

### [Port No.]

[Image transfer (LAN) settings] → [LAN setting] → [Set up] → [FTP server] → [Target server] → [Port No.]: Enter a number less than 65535.

## Virtual Keyboard Operation



You can enter the server name, etc. using the following method.

### With EOS-1D-Series Cameras

#### Moving the cursor:

Hold down the <k> button and turn the <c> dial.

#### Deleting a character in the entry field:

Press the <d> button and the cursor will delete the character on its left.

#### Selecting a keyboard character and entering it:

Hold down the <b> button and turn the <c> dial to select a character. When you let go of the button, the character will be entered at the cursor's position.

#### Exiting the entry screen:

Press the <e> button. The entries will be registered and the previous screen will reappear.

#### Canceling the entry:

Press the <f> button and no changes will be made to the entry. The previous screen will reappear.

### With Cameras Other than EOS-1D-Series

#### Switching between the entry field and keyboard:

Press the <h> button to switch between the entry field and keyboard.

#### Moving the cursor in the entry field:

Turn the <c> dial.

#### Deleting a character in the entry field:

Press the <d> button and the cursor will delete the character on its left.

#### Selecting a keyboard character and entering it:

Turn the <c> dial to select a character. Press the <g> button to enter the character at the cursor's position.

#### Exiting the entry screen:

Press the <e> button. The entries will be registered and the previous screen will reappear.

#### Canceling the entry:

Press the <i> button and no changes will be made to the entry. The previous screen will reappear.

### Login name

[Image transfer (LAN) settings] → [LAN setting] → [Set up] → [FTP server] → [Login name]: Enter your login name.

### Login password

[Image transfer (LAN) settings] → [LAN setting] → [Set up] → [FTP server] → [Login password]: Enter your login password.

### Target folder

[Image transfer (LAN) settings] → [LAN setting] → [Set up] → [FTP server] → [Target folder]: Enter the save folder.

## Passive Mode

[Image transfer (LAN) settings] → [LAN setting] → [Set up] → [FTP server] →  
[Passive mode]: Select No use or Use.

## Proxy

### [Proxy]

[Image transfer (LAN) settings] → [LAN setting] → [Set up] → [FTP server] → [Proxy]  
→ [Proxy]: Select No use or Use.

### [Address]

[Image transfer (LAN) settings] → [LAN setting] → [Set up] → [FTP server] → [Proxy]  
→ [Address]: Enter the number.  
● Enter the number in the same way as for the [Date/Time].

### [Port No.]

[Image transfer (LAN) settings] → [LAN setting] → [Set up] → [FTP server] → [Proxy]  
→ [Port No.]: Enter a number less than 65535.

## Overwrite Same File

[Image transfer (LAN) settings] → [LAN setting] → [Set up] → [FTP server] →  
[Overwrite same file]: Select Yes or No.



# Setting Wireless LAN

## SSID

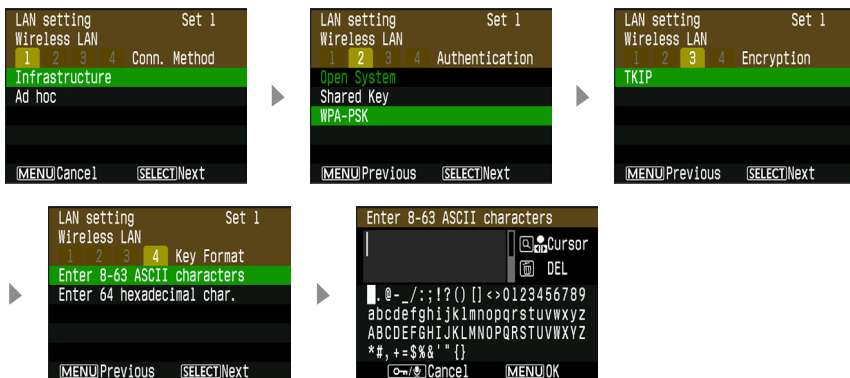
[Image transfer (LAN) settings] → [LAN setting] → [Set up] → [Wireless LAN] → [SSID]: Enter the SSID.

## Advanced settings

You can set the connection method, authentication method, encryption, etc.

[Image transfer (LAN) settings] → [LAN setting] → [Set up] → [Wireless LAN] → [Advanced settings]: If you enter the settings for the wireless LAN access point (or wireless LAN adapter), the following screens will be displayed automatically.

The settings which can be set will vary automatically depending on the configuration.



## MAC Address

[Image transfer (LAN) settings] → [LAN setting] → [Set up] → [Wireless LAN] → [MAC address]: The MAC address will be displayed.

# Protecting and Saving the Settings ■

## Protect Settings

[Image transfer (LAN) settings] → [LAN setting] → [Set up] → [Protect settings]:

Select Off or On.

- Select **[On]** to prevent the LAN settings from being modified inadvertently.
- Select **[Off]** if you want to change the LAN settings with the camera.

## Save Settings

[Image transfer (LAN) settings] → [LAN setting] → [Set up] → [Save settings] →

**[OK]**: The settings will be saved in the memory card.

- Canon and EOS are trademarks of Canon Inc.
- Windows is a trademark or registered trademark of Microsoft Corporation in the United States and other countries. In this manual, Windows XP Professional is referred to as Windows XP, and Windows 2000 Professional as Windows 2000.
- Macintosh is a registered trademark of Apple Corporation in the United States and other countries.
- WPA is a registered trademark of Wi-Fi Alliance.
- All other corporate names and trademarks mentioned in this manual are the property of their respective owners.



**CANON INC.** 30-2, Shimomaruko 3-chome, Ohta-ku, Tokyo 146-8501, Japan

U.S.A. ————— **CANON U.S.A. INC.**

One Canon Plaza, Lake Success, NY 11042-1198, U.S.A.  
For all inquiries concerning this product, call toll free in the U.S.  
1-800-OK-CANON

CANADA ————— **CANON CANADA INC. HEADQUARTERS**

6390 Dixie Road, Mississauga, Ontario L5T 1P7, Canada

**CANON CANADA INC. MONTREAL BRANCH**

5990, Côte-de-Liesse, Montréal Québec H4T 1V7, Canada 1010

**CANON CANADA INC. CALGARY OFFICE**

2828, 16th Street, N.E. Calgary, Alberta T2E 7K7, Canada

For all inquiries concerning this camera, call toll free in Canada

1-800-OK-CANON

EUROPE, ————— **CANON EUROPA N.V.**

AFRICA & Bovenkerkerweg 59-61, P.O. Box 2262, 1180 EG Amstelveen, The Netherlands

MIDDLE EAST **CANON COMMUNICATION & IMAGE FRANCE S.A.S.**

12 Rue de l'Industrie 92414 Courbevoie Cedex, France

**CANON UK LTD.**

Woodhatch Reigate Surrey RH2 8BF, United Kingdom

**CANON DEUTSCHLAND GmbH**

Europark Fichtenhain A10, 47807 Krefeld, Germany

**CANON ITALIA S.p.A.**

Via Milano 8 I-20097 San Donato Milanese, Milano, Italy

**CANON Schweiz AG**

Geschäftsbereich Wiederverkauf, Industriestrasse 12, CH-8305 Dietlikon,  
Switzerland

**CANON GMBH**

Zetschegasse 11, A-1230 Wien, Austria

**CANON España, S. A.**

C/Joaquín Costa, 41, 28002 Madrid, Spain

**SEQUE Soc. Nac. de Equip., Lda.,**

Praça da Alegria, 58, 2º, 1269-149 Lisboa, Portugal

CENTRAL & ————— **CANON LATIN AMERICA, INC.**

SOUTH AMERICA 703 Waterford Way, Ste. 400 Miami, FL 33126, U.S.A.

ASIA ————— **CANON (China) Co., Ltd.**

15F, North Tower, Beijing Kerry Center, 1 Guang Hua Road, Chaoyang District,  
Beijing 100020, China

**CANON HONGKONG CO., LTD.**

19/F., The Metropolis Tower, 10 Metropolis Drive, Hung Hom, Kowloon, Hong Kong

**CANON SINGAPORE PTE. LTD.**

1 HarbourFront Avenue, #04-01 Keppel Bay Tower, Singapore 098632

OCEANIA ————— **CANON AUSTRALIA PTY. LTD.**

1 Thomas Holt Drive, North Ryde, N.S.W. 2113, Australia

**CANON NEW ZEALAND LTD.**

Akoranga Business Park, Akoranga Drive, Northcote, Auckland, New Zealand

JAPAN ————— **CANON SALES CO., INC.**

16-6, Kohnan 2-chome, Minato-ku, Tokyo 108-8011, Japan

This Instruction Manual booklet is current as of October 2005. For information on using the WFT-E1 with accessories introduced after this date, contact your nearest Canon Service Center.