



i m a g e R U N N E R
A D V A N C E

C2030/C2030H/C2025H
C2020/C2020H

Setup Guide



How This Manual Is Organized

Chapter 1

Operations Required to Use the Machine

Describes the flow of operations required first, such as logging in to the machine, and connecting to a network.

Chapter 2

Setting Up the Machine for the First Time

Uses general examples to describe the setup required for starting to use the functions of the machine.

Chapter 3

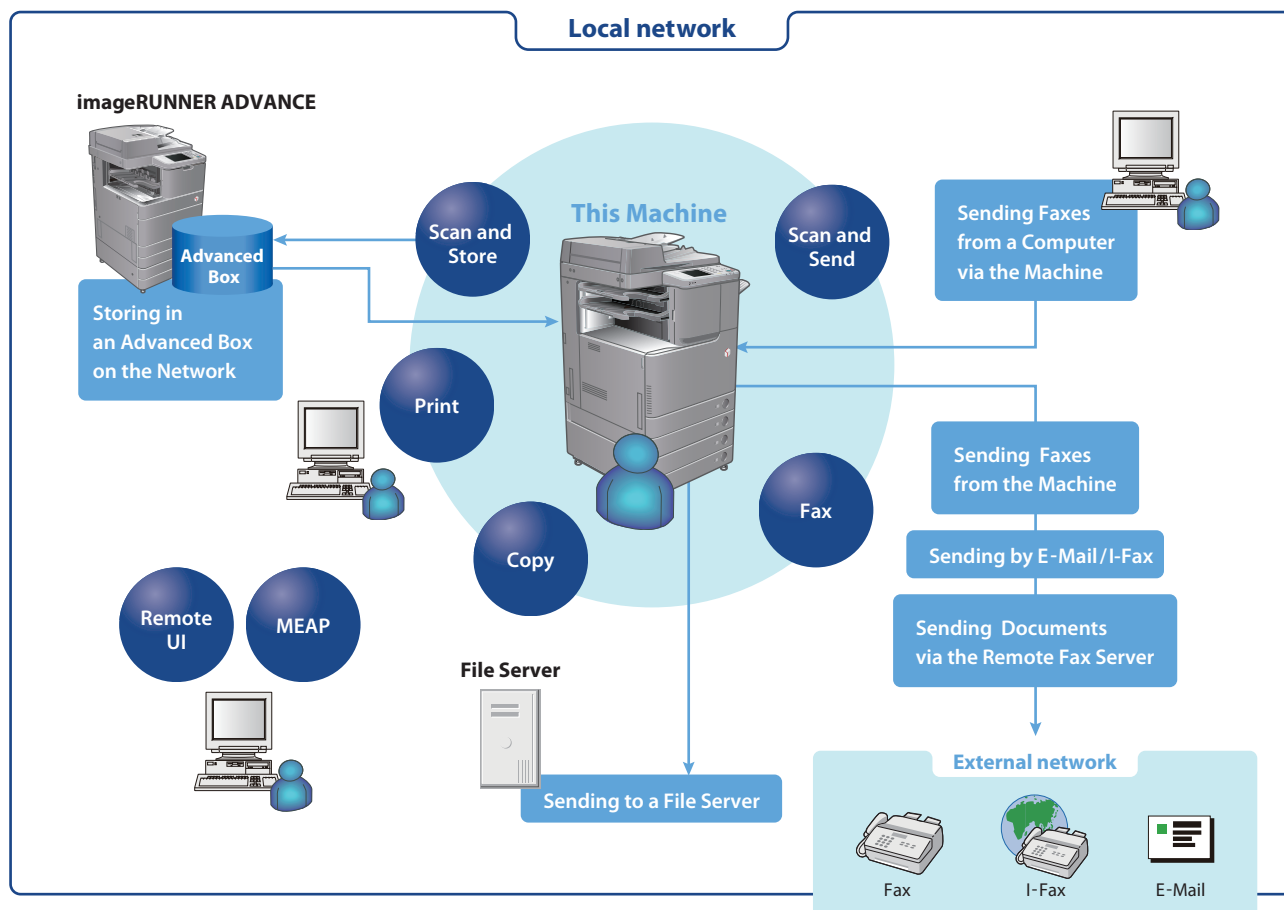
Using the System Options/MEAP Applications

Describes the procedure for installing system options and MEAP applications using the Register/Update Software function, and the procedure for using system options and MEAP applications.

- As we are constantly improving our products, if you need an exact specification, please contact Canon.
- Screen shots used in this manual may differ from the ones you actually see.

Preface

It is necessary to specify settings in advance to use some functions of the machine. Refer to “Flow of Settings for Using the Desired Functions” on p. 2 in this manual to check the flow of the required operations.



Symbols Used in This Manual

The following symbols are used in this manual to explain procedures, restrictions, handling precautions, and instructions that should be observed for safety.



IMPORTANT

Indicates operational requirements and restrictions. Be sure to read these items carefully to operate the machine correctly, and avoid damage to the machine or property.



NOTE

Indicates a clarification of an operation, or contains additional explanations for a procedure. Reading these notes is highly recommended.

Keys and Buttons Used in This Manual

The following symbols and key/button names are a few examples of how keys and buttons to be clicked or pressed are expressed in this manual:

- Touch Panel Display Keys: [Key Name]

Example: [Cancel]/[Close]

- Control Panel Keys: Key Icon (Key Name)

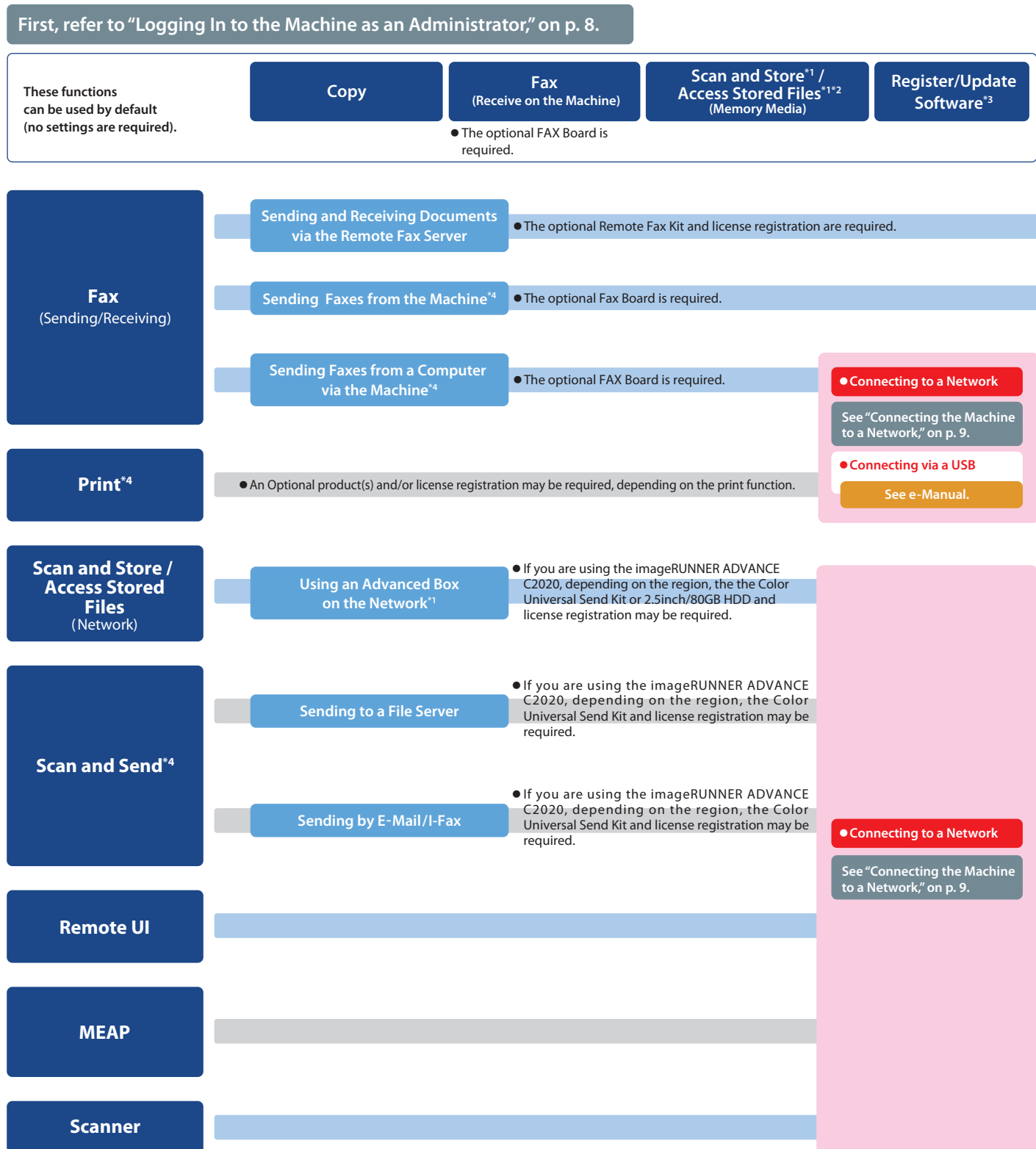
Example:  (Start) /  (Key Name)

- Buttons on Computer Operation Screens: [Button Name]

Example: [OK]/[Add]

Flow of Settings for Using the Desired Functions

This flowchart indicates the flow of settings required for using each function of the machine. After checking the flow of settings required, refer to the detailed page in this manual or the e-Manual to perform the actual setting procedure.



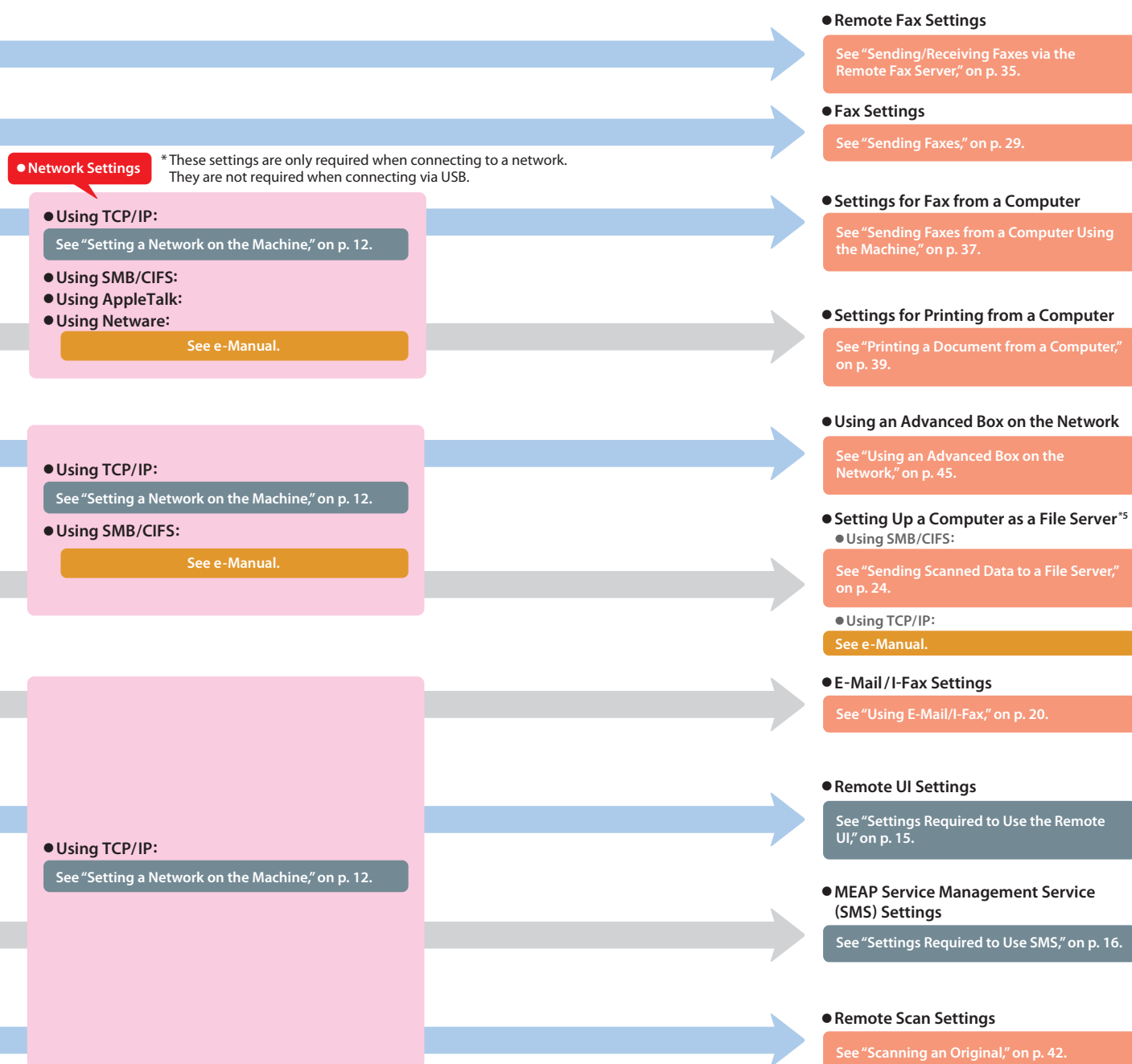
*1 To print PDF files stored in memory media or the Advanced Space of another machine on the network, the PS Printer Kit or Direct Print Kit (for PDF) is required. (Both the PS Printer Kit and Direct Print Kit (for PDF) require license registration.)

*2 The default setting for displaying memory media is 'Off'. To use the memory media, press [Display Settings] in [Preferences] (Settings/Registration) → press [Store Location Display Settings] → [Memory Media] → [On].

*3 To access a distribution server to register/update software, it is necessary to perform the "Connecting to a Network" and "Network Settings" operations indicated in this flowchart. To register/update software using the Remote UI, it is necessary to perform the "Connecting to a Network," "Network Settings," and "Remote UI Settings" operations.

*4 For information on the system requirements, see e-Manual > Optional Products and Software.

*5 The file servers you can use depend on your network. For details on the file servers you can use, see e-Manual > Network.



Contents

Preface	1
Symbols Used in This Manual	1
Keys and Buttons Used in This Manual	1
Flow of Settings for Using the Desired Functions	2
 Chapter 1 Operations Required to Use the Machine	 7
Logging In to the Machine as an Administrator	8
Logging In from the Touch Panel Display	8
Logging In Using the Remote UI	8
Connecting the Machine to a Network	9
Setting a Network on the Machine	12
Managing the Machine from a Computer	15
Settings Required to Use the Remote UI	15
Managing the Machine Using the Remote UI	16
Settings Required to Use SMS	16
Managing the Machine Using SMS	17
 Chapter 2 Setting Up the Machine for the First Time	 19
Using E-Mail/I-Fax	20
Settings Required to Send E-Mail/I-Faxes	20
Specifying E-Mail/I-Fax Settings	20
Sending E-Mail/I-Faxes	21
Storing New Destinations	21
Sending an E-Mail Message	23
Sending Scanned Data to a File Server	24
Settings Required to Send Data to a Computer	24
Setting a Computer	24
Scanning and Sending an Original to the Shared Folder of a Computer	27
Storing New Destinations	27
Sending Scanned Data to a Shared Folder	28
Sending Faxes	29
Settings Required to Send Faxes	29
Registering the Fax Number, Unit Name, and Line Type	30
Attaching the Sender's Name to Sent Documents	32
Sending Faxes	33
Storing New Destinations	33
Sending a Fax	34

Sending/Receiving Faxes via the Remote Fax Server	35
Settings Required to Send Faxes via the Remote Fax Server.....	35
Setting the Server.....	35
Setting the Client	35
Sending Faxes Using the Remote Fax Server	36
Settings Required to Receive a Fax via the Remote Fax Server	37
Setting the Server.....	37
Setting the Client	37
Sending Faxes from a Computer Using the Machine.....	37
Settings Required to Send Faxes from a Computer	37
Installing the Fax Driver	37
Sending Faxes from a Computer.....	38
Printing a Document from a Computer	39
Settings Required to Print from a Computer	39
Installing the Printer Driver	39
Printing from a Computer	40
Scanning an Original	42
Settings Required to Perform Scanning.....	42
Installing the Scanner Driver.....	42
Setting Remote Scanning Online	42
Scanning an Original.....	44
Using an Advanced Box on the Network.....	45
Settings Required to Use an Advanced Box on the Network	45
Making an Advanced Box Accessible on the Network.....	46
Accessing an Advanced Box on the Network	46
Storing Data in an Advanced Box on the Network.....	48
 Chapter 3 Using the System Options/MEAP Applications.....	 51
Installing the System Options/MEAP Applications	52
Installing by Connecting This Machine to an Outside Network.....	52
Installing by Not Connecting This Machine to an Outside Network.....	52
License Registration	53
System Options/MEAP Applications	53
Installing the System Options/MEAP Applications.....	53
Installing by Connecting this Machine to an Outside Network	53
Installing by Not Connecting this Machine to an Outside Network	54
Installing by Connecting This Machine to an Outside Network	54
Using the Touch Panel Display to Install (Delivery).....	54
Using the Remote UI to Install (Delivery)	56
Installing by Not Connecting This Machine to an Outside Network	57
Obtaining the License Key/License File	57
Installing the System Options Using the Touch Panel Display	57
Installing the System Options Using the Remote UI (Manual)	58
Installing the MEAP Applications Using the Remote UI (Manual)	58
Starting the MEAP Applications	59

Downloading the Manuals and Related Software 60

Managing by Using the Touch Panel Display 60

 Displaying the Installation Log Using the Touch Panel Display 60

 Testing Communication Using the Touch Panel Display 61

Managing by Using the Remote UI 62

 Displaying the Installation Log Using the Remote UI 62

 Testing Communication Using the Remote UI 62

Updating the Firmware 63

 Updating Firmware 63

 Updating Using the Remote UI (Manual) 63

Operations Required to Use the Machine

1

- Logging In to the Machine as an Administrator8**
 - Logging In from the Touch Panel Display 8
 - Logging In Using the Remote UI 8
- Connecting the Machine to a Network9**
- Setting a Network on the Machine12**
- Managing the Machine from a Computer15**
 - Settings Required to Use the Remote UI 15
 - Managing the Machine Using the Remote UI 16
 - Settings Required to Use SMS 16
 - Managing the Machine Using SMS 17

Logging In to the Machine as an Administrator

To specify the settings, you must log in to the machine as an administrator. There are two methods for logging in; logging in from the touch panel display of the machine and logging in from a computer using the Remote UI.

Logging In from the Touch Panel Display

To log in as the administrator using the touch panel display, enter the System Manager ID and System PIN as follows:

System Manager ID
7654321

System PIN
7654321



IMPORTANT

The default setting for both the System Manager ID and System PIN is '7654321'. We recommend that you change both the System Manager ID and System PIN after logging in to the machine.

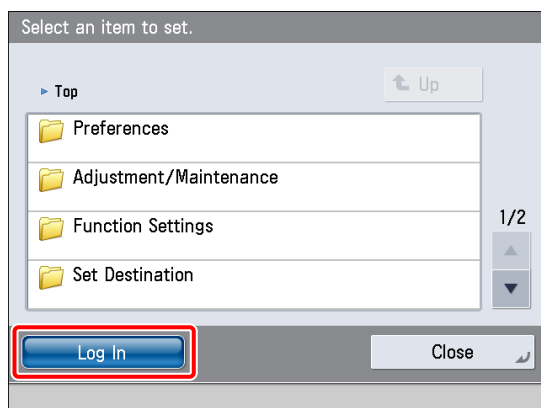
In this example, the default System Manager ID and System PIN are used to log in.

1

Press  (Settings/Registration).

2

Press [Log In].

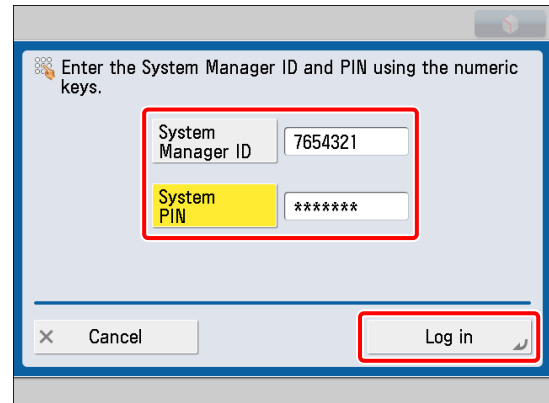


3


Enter the System Manager ID and System PIN → press [Log in].

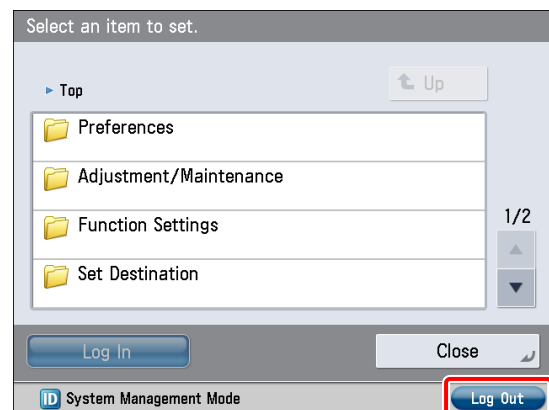
[System Manager ID]: 7654321


[System PIN]: 7654321 (the number you enter is masked with asterisks)



You are now logged in to the machine as an administrator. Refer to Chapter 2, "Setting Up the Machine for the First Time," to specify the settings for using each function.

When you have finished specifying settings and performing operations, press [Log Out] or the  (Log In/Out) on the control panel to log out from the machine.



To go back to the Main Menu screen, press  (Main Menu).

Logging In Using the Remote UI

To log in as the administrator using the Remote UI, enter the System Manager ID and System PIN as follows:

System Manager ID
7654321

System PIN
7654321



IMPORTANT

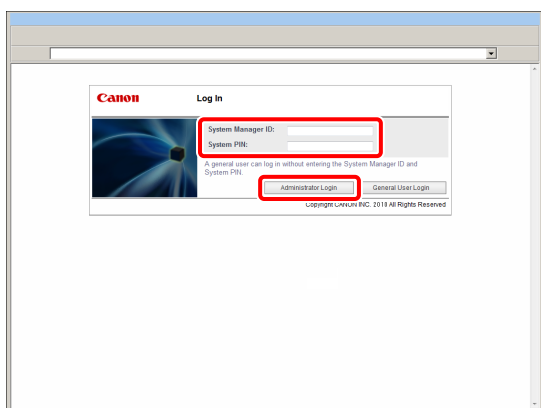
The default setting for both the System Manager ID and System PIN is '7654321'. We recommend that you change both the System Manager ID and System PIN after logging in to the machine.

NOTE

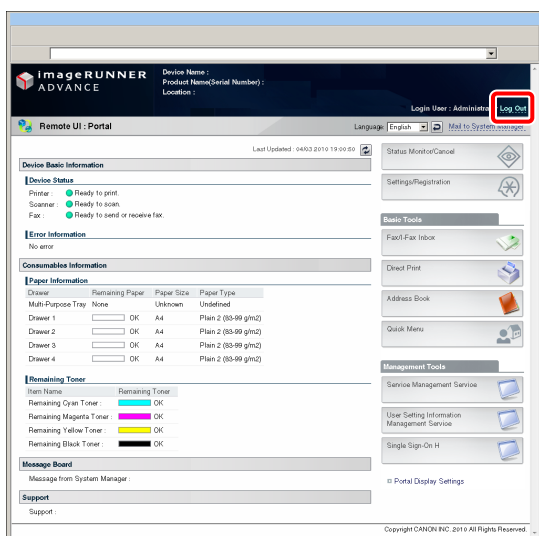
- To log in as the administrator using the Remote UI, you must specify the network connection settings in advance. For instructions on specifying the network connection settings, see "Connecting the Machine to a Network," on p. 9.
- If you are using a login service, see e-Manual > MEAP.
- If the authentication function is not set, the Log In screen is not displayed.
- For information on necessary system environment and preparation to start the Remote UI, see e-Manual > Remote UI.

In this example, the default System Manager ID and System PIN are used to log in.

- 1 Start your Web browser.
- 2 Enter 'http://<IP address or host name of the machine>' in [Address].
- 3 Enter the System Manager ID and System PIN → click [Administrator Login].
[System Manager ID]: 7654321
[System PIN]: 7654321



You are now logged in to the machine as an administrator. Refer to Chapter 2, "Setting Up the Machine for the First Time," to specify the settings for using each function. When you have finished specifying settings and performing operations, press [Log Out] to log out.



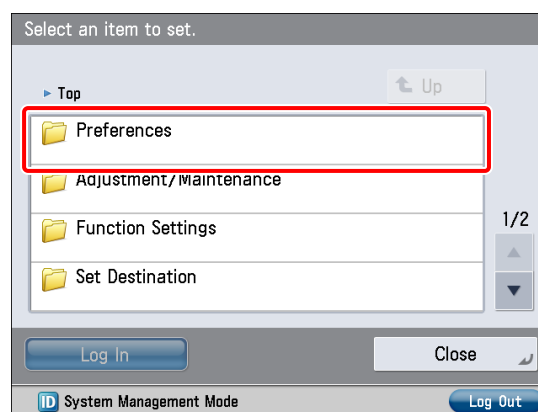
Connecting the Machine to a Network

To use functions such as the Print or Fax function from a computer, it is necessary to connect the machine to a network in advance.

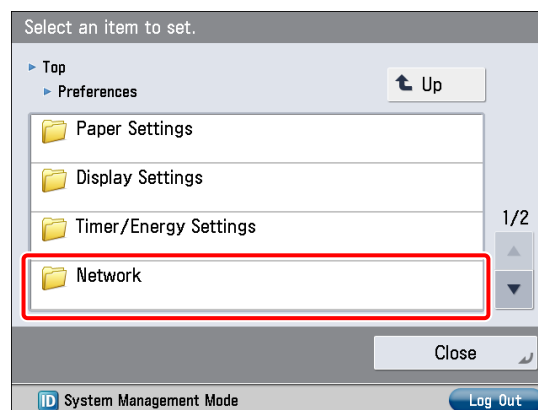
NOTE

Before setting the network connection, it is necessary to connect the machine and the computer with a network cable. For details, see e-Manual > Network > Connecting the Machine to a Computer or Network.

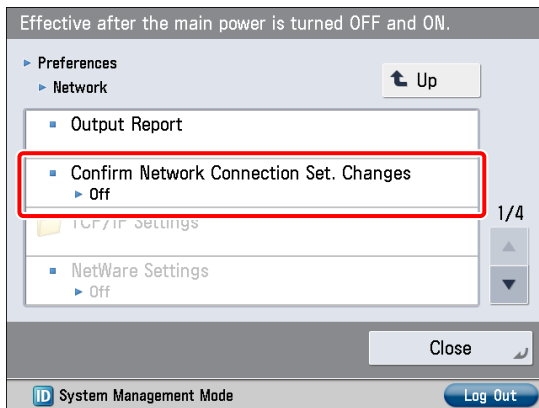
- 1 Press  (Settings/Registration).
- 2 Press [Preferences].



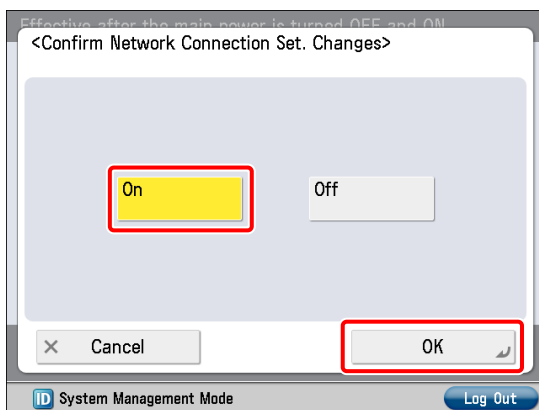
- 3 Press [Network].



4 Press [Confirm Network Connection Set. Changes].

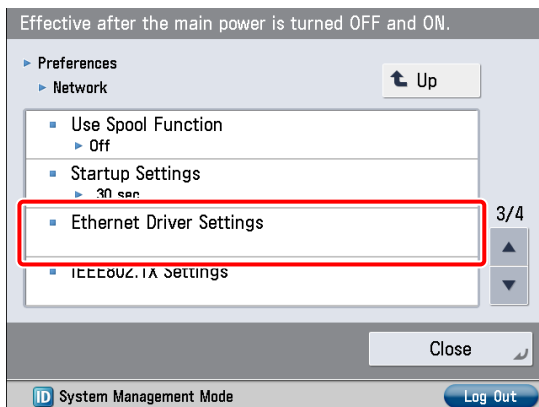


5 Press [On] → [OK].

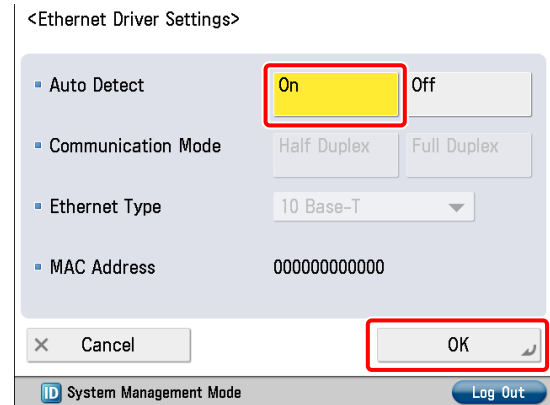


6 Press [Ethernet Driver Settings].

If the desired setting is not displayed, press ▲ or ▼ to scroll to the desired setting.



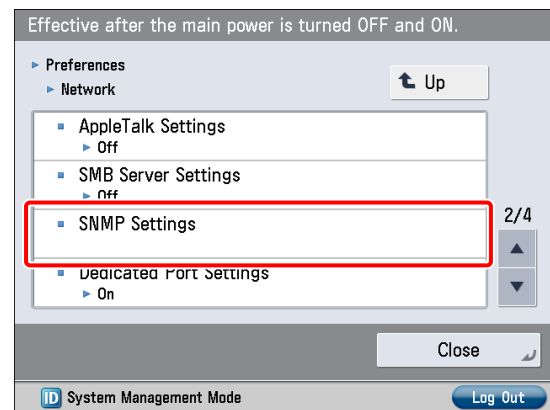
7 Press [On] for <Auto Detect> → [OK].



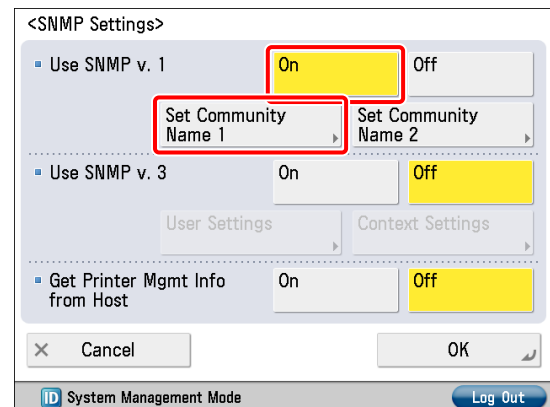
The interface settings are now specified.

Next, set the communication environment for the machine and the computers on the network.

8 Press [SNMP Settings].



9 Press [On] for <Use SNMP v. 1> → press [Set Community Name 1].



10 Specify the following settings → press [OK].

In this example, the following settings are specified:
<Community Name 1>: [On]
<MIB Access Permission>: [Read Only]
[Community Name]: public

<Set Community Name 1>

Community Name 1: On Off

MIB Access Permission: Read/Write Read Only

Community Name: public

Cancel OK

ID System Management Mode Log Out

11 Press [On] for <Get Printer Mgmt Info from Host> → [OK].

<SNMP Settings>

Use SNMP v. 1: On Off

Set Community Name 1: Set Community Name 2:

Use SNMP v. 3: On Off

User Settings: Context Settings:

Get Printer Mgmt Info from Host: On Off

Cancel OK

ID System Management Mode Log Out

12 Press [Dedicated Port Settings].

Effective after the main power is turned OFF and ON.

Preferences > Network

AppleTalk Settings: Off

SMB Server Settings: Off

SNMP Settings: 2/4

Dedicated Port Settings: On

Close

ID System Management Mode Log Out

13 Press [On] → [OK].

Effective after the main power is turned OFF and ON.

<Dedicated Port Settings>

On Off

Cancel OK

ID System Management Mode Log Out

14 Press [Use Spool Function].

Effective after the main power is turned OFF and ON.

Preferences > Network

Use Spool Function: Off

Startup Settings: 30 sec

Ethernet Driver Settings: 3/4

IEEE802.1X Settings

Close

ID System Management Mode Log Out

15 Press [On] → [OK].

Effective after the main power is turned OFF and ON.

<Use Spool Function>

On Off

Cancel OK

ID System Management Mode Log Out

The communication environment settings are now specified. Next, refer to "Setting a Network on the Machine," on p. 12 to specify the settings to use the network.

Setting a Network on the Machine

After connecting the machine to the network, you must specify the settings on your machine. In this example, a TCP/IP type network is used.

TCP/IP Settings

[Use IPv4]: On

[IP Address Settings]: 192.168.1.21

DNS Settings

[DNS Server Address Settings]: 192.168.1.22

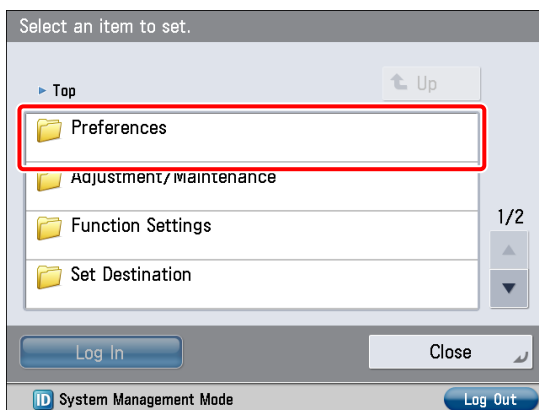
[Host Name]: host-name

[Domain Name]:

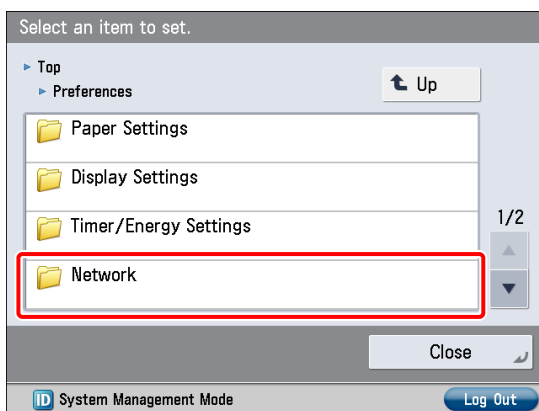
organization.company.com

1 Press  (Settings/Registration).

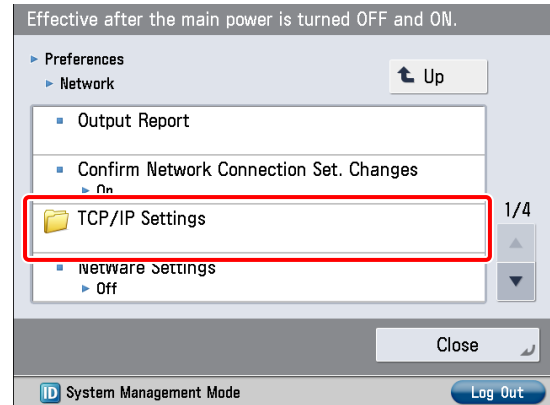
2 Press [Preferences].



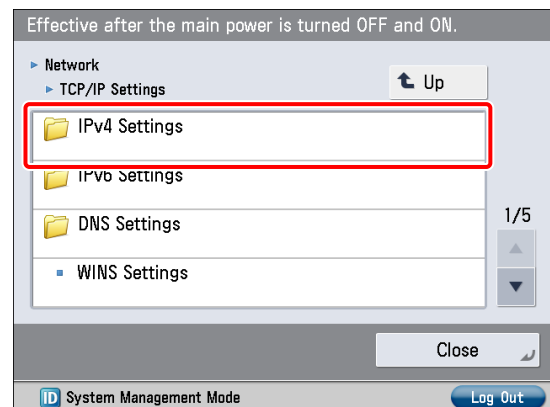
3 Press [Network].



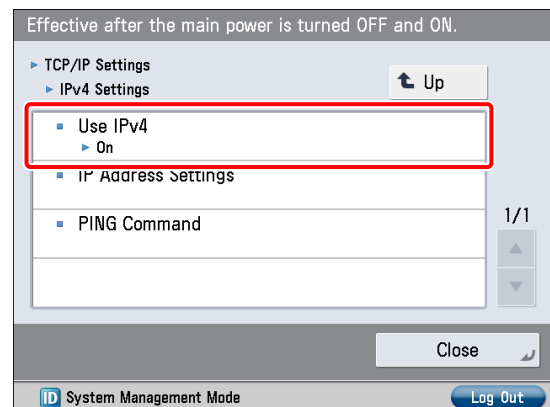
4 Press [TCP/IP Settings].



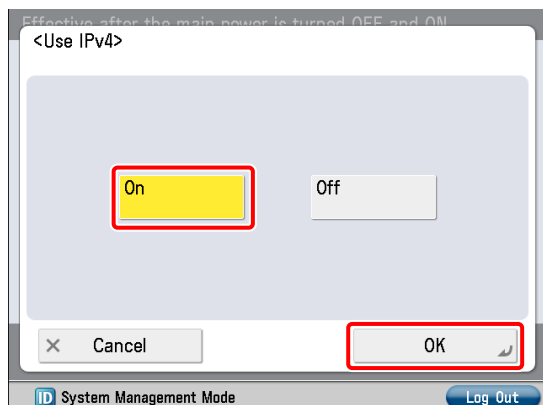
5 Press [IPv4 Settings].



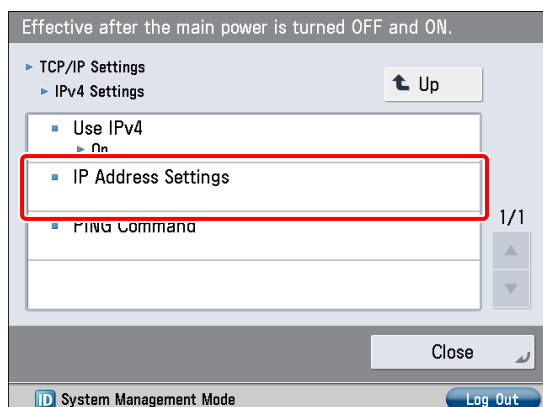
6 Press [Use IPv4].



7 Press [On] → [OK].



8 Press [IP Address Settings].



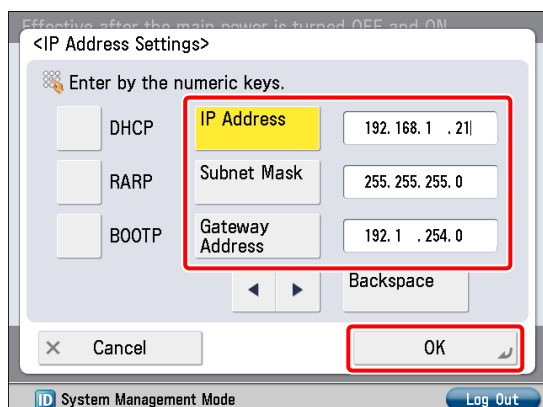
9 Specify the following settings → press [OK].

In this example, the following values are entered:

[IP Address]: 192.168.1.21

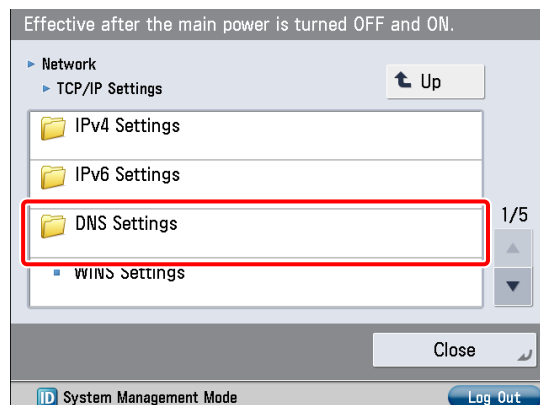
[Subnet Mask]: 255.255.255.0

[Gateway Address]: 192.1.254.0

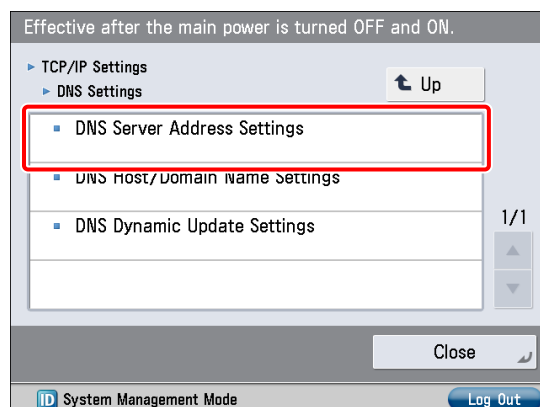


The IP address settings are now specified.
Next, specify the DNS settings.

10 Press [DNS Settings].

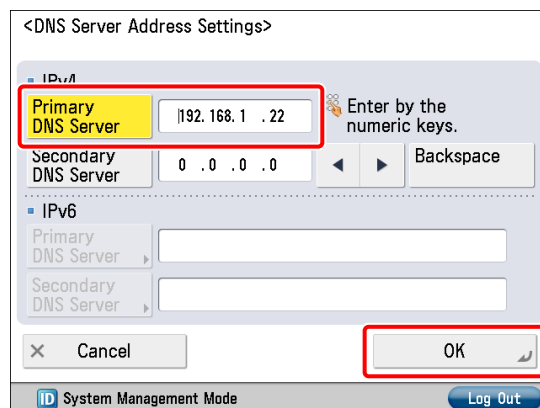


11 Press [DNS Server Address Settings].

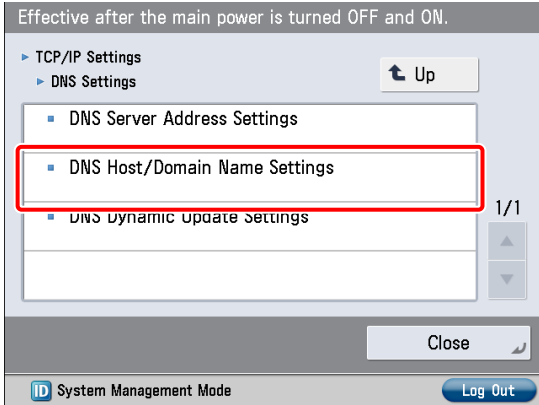


12 Enter the IP address in [Primary DNS Server] for <IPv4> → press [OK].

In this example, '192.168.1.22' is entered.

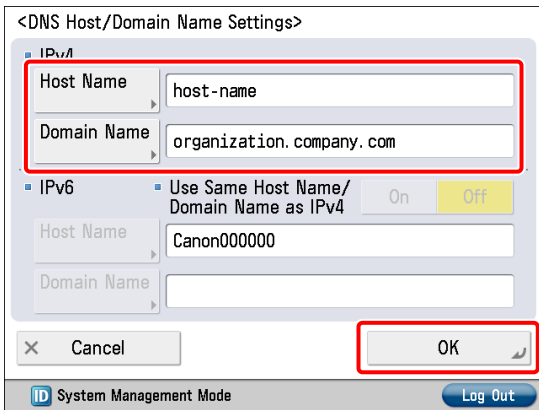


13 Press [DNS Host/Domain Name Settings].



14 Enter a host name and domain name for <IPv4> → press [OK].

In this example, the following values are entered:
 [Host Name]: host-name
 [Domain Name]: organization.company.com



15 Turn OFF the main power of the machine, and then turn ON the main power again.

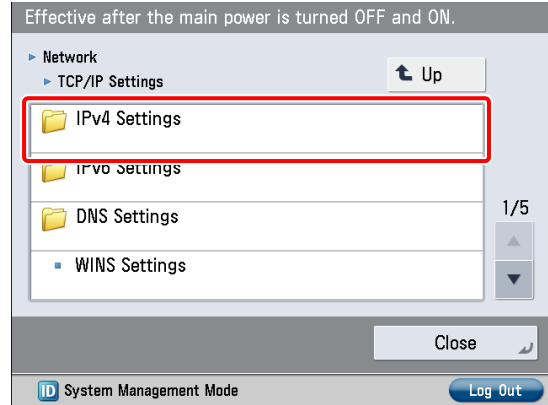
The DNS setting becomes effective only after turning the machine's main power OFF, and then ON.

The DNS settings are now specified.
 Next, confirm whether the network is correctly set.

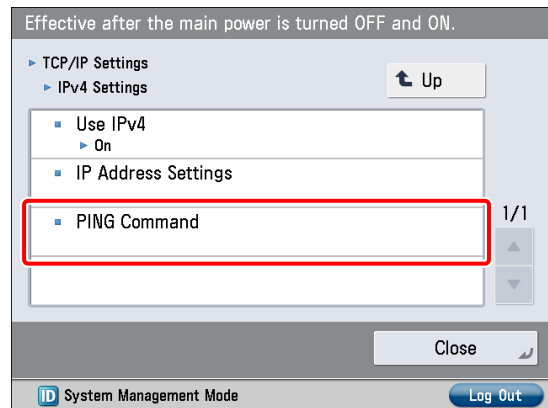
16 Press (Start).

17 Press [Preferences] → [Network] → [TCP/IP Settings].

18 Press [IPv4 Settings].

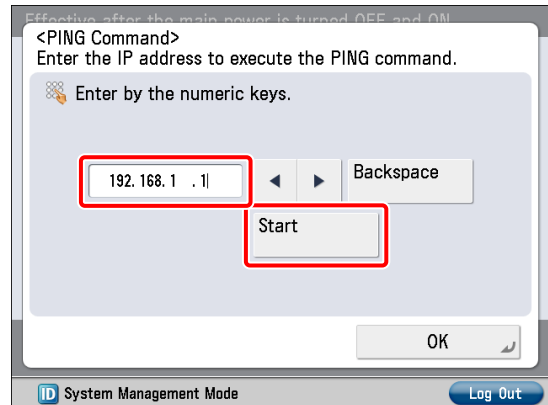


19 Press [PING Command].



20 Enter an IPv4 address that exists on the network → press [Start].

In this example, '192.168.1.1' is entered.



21 Confirm the response → press [OK].

The communication environment settings are now specified.
 Next, refer to "Managing the Machine from a Computer," on p. 15 to specify the settings for using the management functions from a computer.

Managing the Machine from a Computer

This section describes the operations that the administrator must perform to enable the machine to be managed from a computer screen.

The Remote UI or SMS is used to manage the machine from a computer.

● Remote UI (User Interface):

The Remote UI is software that enables you to access the machine's functions from your computer's Web browser. For example, the Remote UI enables you to access the machine to check job status, execute jobs, and specify various settings.

1. Settings Required to Use the Remote UI
2. Managing the Machine Using the Remote UI

● SMS (Service Management Service):

SMS is software that enables you to access the machine's functions from your computer's Web browser to install and manage MEAP applications (MEAP: the application platform installed in Canon multitasking machines).

1. Settings Required to Use SMS
2. Managing the Machine Using SMS

To use the Remote UI and SMS, you must specify the settings on your machine in advance.

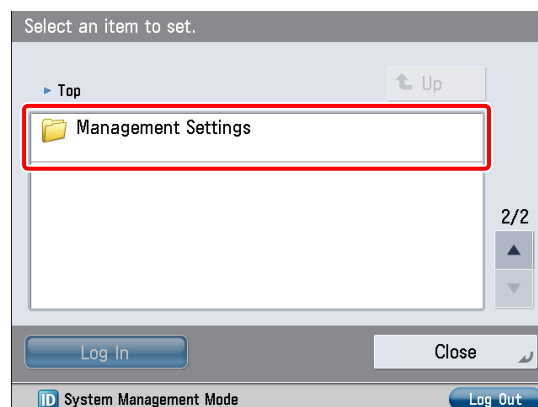
Settings Required to Use the Remote UI

If you use the Remote UI, you can access the machine using a Web browser to manage the machine and check its status from a computer. To start the Remote UI, it is necessary to enable it on the machine.

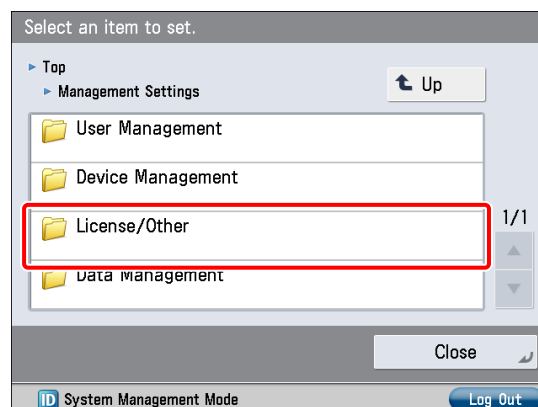
Remote UI
[Remote UI]: On

1 Press  (Settings/Registration).

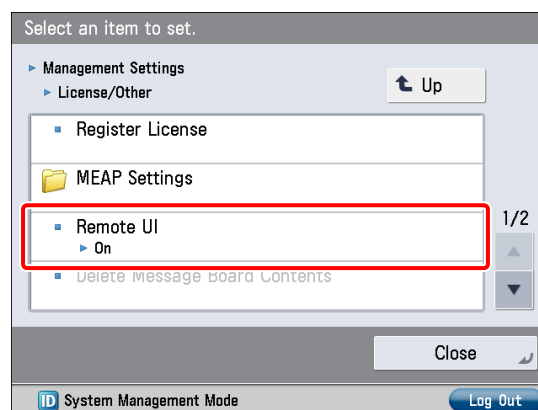
2 Press [Management Settings].



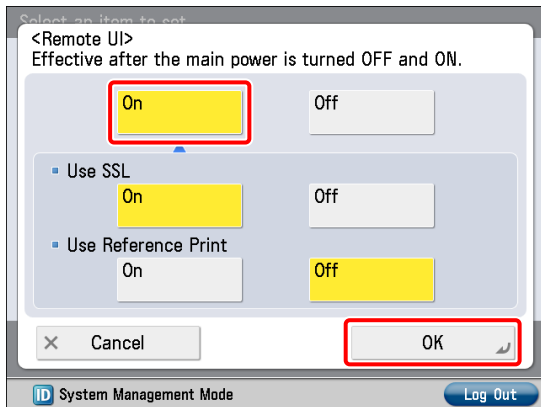
3 Press [License/Other].



4 Press [Remote UI].



- 5 Press [On] for <Remote UI> → [OK].
You can specify the desired settings for <Use SSL>.

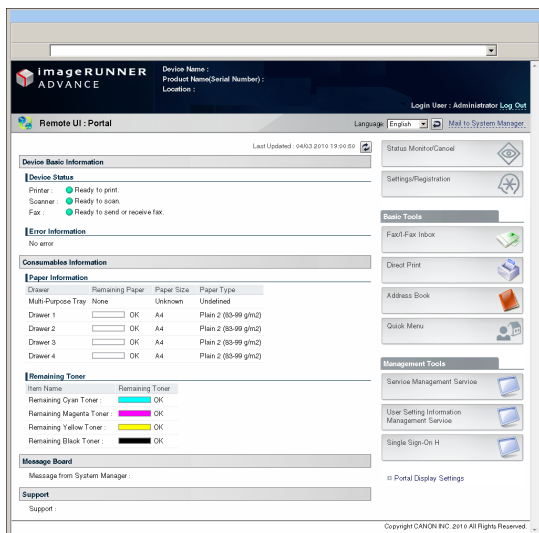


- 6 Press [Close].
- 7 Turn OFF the main power of the machine, and then turn ON the main power again.

The [Remote UI] setting becomes effective only after turning the machine's main power OFF, and then ON.

Managing the Machine Using the Remote UI

- 1 Start your Web browser.
- 2 Enter 'http://<IP address or host name of the machine>' in [Address].
The Remote UI screen is displayed.
- 3 You can check job statuses, consumable levels, and change various settings.

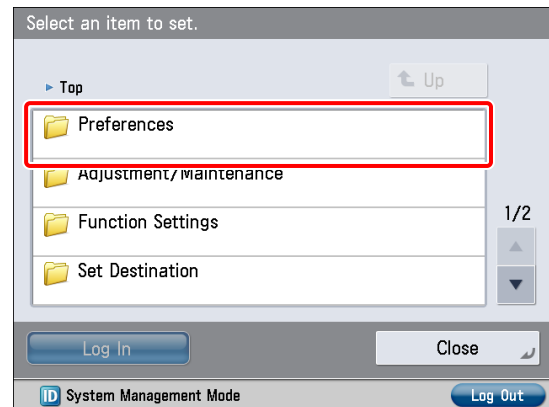


Settings Required to Use SMS

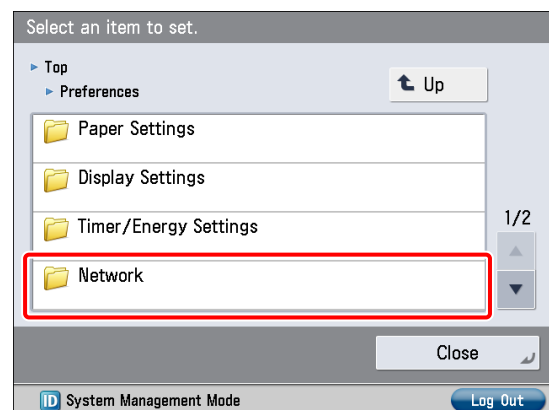
If you use SMS, you can manage the MEAP applications installed in the machine from the Web browser on your computer.
MEAP applications are software used for customizing and expanding the functionality of the machine.
To start SMS, it is necessary to enable your computer to access the machine.

TCP/IP Settings [Use HTTP]: [On]

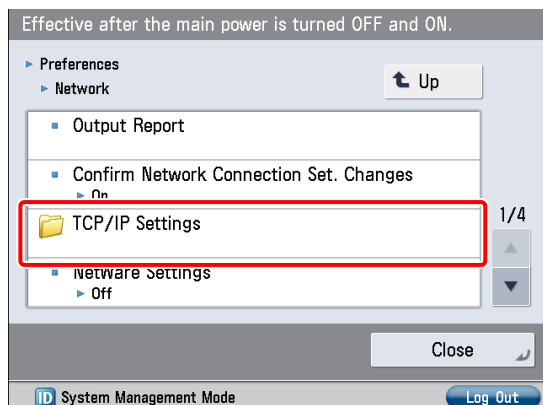
- 1 Press  (Settings/Registration).
- 2 Press [Preferences].



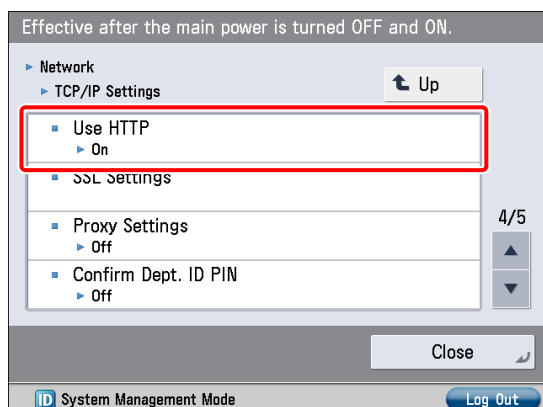
- 3 Press [Network].



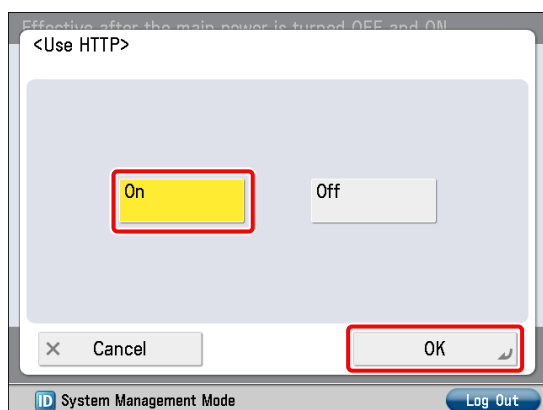
4 Press [TCP/IP Settings].



5 Press [Use HTTP].



6 Press [On] → [OK].



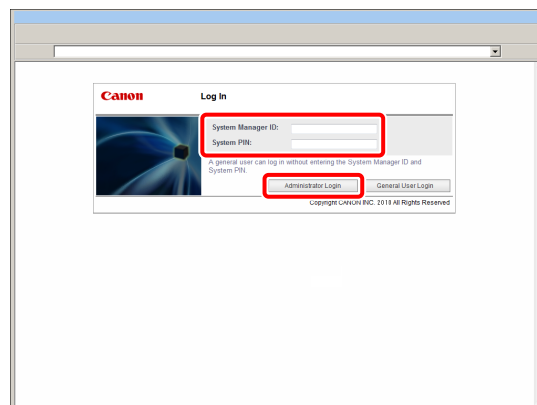
7 Press [Close].

8 Turn OFF the main power of the machine, and then turn ON the main power again.

The [Use HTTP] setting becomes effective only after turning the machine's main power OFF, and then ON.

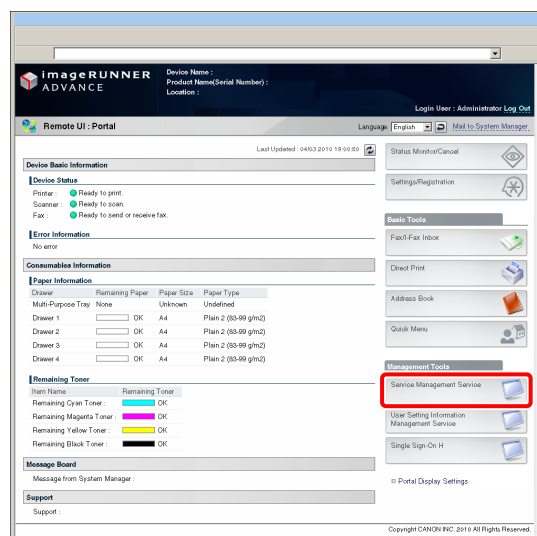
Managing the Machine Using SMS

- 1 Start your Web browser.
- 2 Enter 'http://<the IP address or host name of the machine>' in [Address].
- 3 Enter the System Manager ID and System PIN → click [Administrator Login].
[System Manager ID]: 7654321
[System PIN]: 7654321



You are now logged in to the Remote UI.

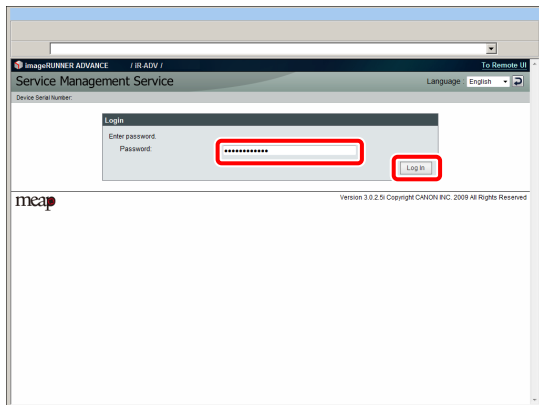
4 Click [Service Management Service].



The [Login] page of SMS is displayed.

5 Enter the password → press [Log In].

In this example, 'MeapSmsLogin' is entered.



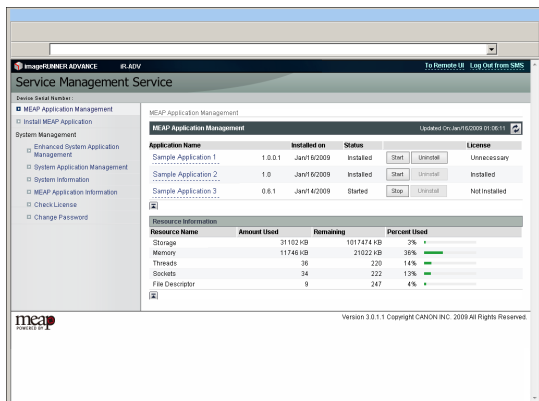
IMPORTANT

The default password is 'MeapSmsLogin' (case sensitive). We recommend that you change the password after logging in to SMS.

The SMS screen appears.

6 Perform MEAP application management by confirming and installing the MEAP applications.

For information on each operation, see the e-Manual.



Setting Up the Machine for the First Time

2

Using E-Mail/I-Fax20

Settings Required to Send E-Mail/I-Faxes	20
Sending E-Mail/I-Faxes.....	21

Sending Scanned Data to a File Server24

Settings Required to Send Data to a Computer	24
Scanning and Sending an Original to the Shared Folder of a Computer.....	27

Sending Faxes.....29

Settings Required to Send Faxes	29
Sending Faxes.....	33

Sending/Receiving Faxes via the Remote Fax Server35

Settings Required to Send Faxes via the Remote Fax Server	35
Sending Faxes Using the Remote Fax Server	36
Settings Required to Receive a Fax via the Remote Fax Server	37

Sending Faxes from a Computer Using the Machine.....37

Settings Required to Send Faxes from a Computer.....	37
Sending Faxes from a Computer	38

Printing a Document from a Computer.....39

Settings Required to Print from a Computer	39
Printing from a Computer.....	40

Scanning an Original42

Settings Required to Perform Scanning	42
Scanning an Original	44

Using an Advanced Box on the Network.....45

Settings Required to Use an Advanced Box on the Network.....	45
Storing Data in an Advanced Box on the Network	48

Using E-Mail/I-Fax

You can send originals scanned on the machine using e-mail or internet fax (I-fax).

This example describes the procedure for sending a design proposal in PDF format. The flow of operations is indicated below.

1. Settings Required to Send E-Mail/I-Faxes

- Specifying E-Mail/I-Fax Settings

2. Sending E-Mail/I-Faxes

- Storing New Destinations
- Sending an E-Mail Message



IMPORTANT

Settings for receiving e-mail/I-faxes must also be specified. For information on the settings, see e-Manual > Settings/Registration > Common Communication Settings for E-Mail/I-Fax.

Settings Required to Send E-Mail/I-Faxes

Communication settings must be specified to send e-mail/I-faxes.

The following example describes the procedure for the settings below:

<Communication Settings: Basic Settings>

[E-Mail Address]: john@example.com

[SMTP Server]: 192.168.1.2

<Communication Settings: Authentication Settings>

<SMTP Authentication (SMTP AUTH)>: On

[User Name]: user_name*¹

[Password]: password*¹

To specify the communication server settings, you must log in as an administrator. To log in as an administrator, see "Logging In to the Machine as an Administrator," on p. 8.

*¹ The user name and password for logging in to the SMTP server.

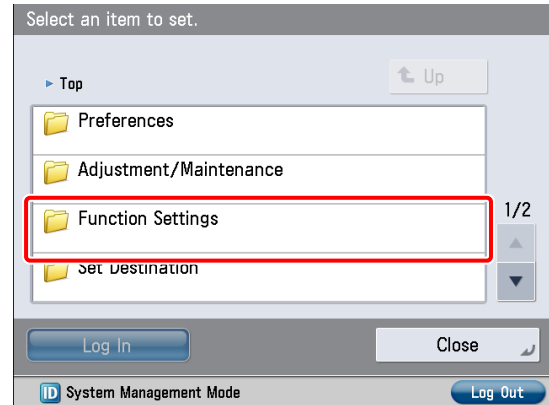
Specifying E-Mail/I-Fax Settings

1

Press  (Settings/Registration).

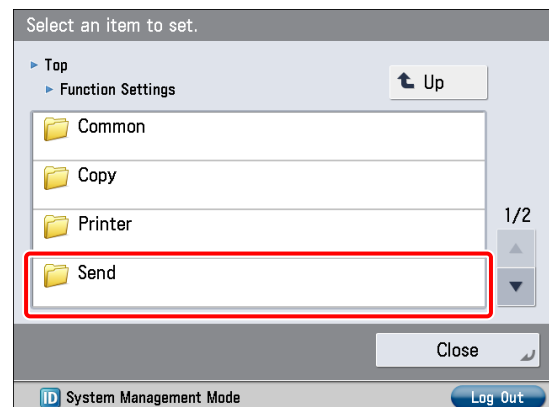
2

Press [Function Settings].



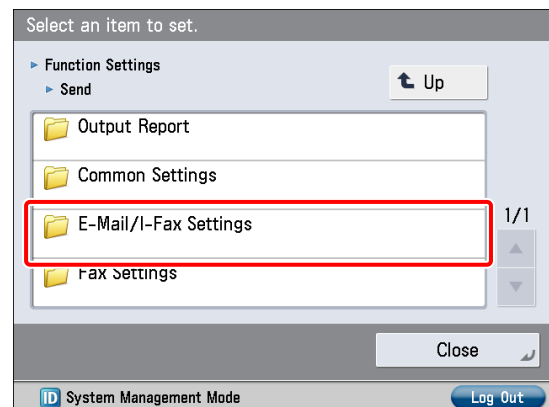
3

Press [Send].



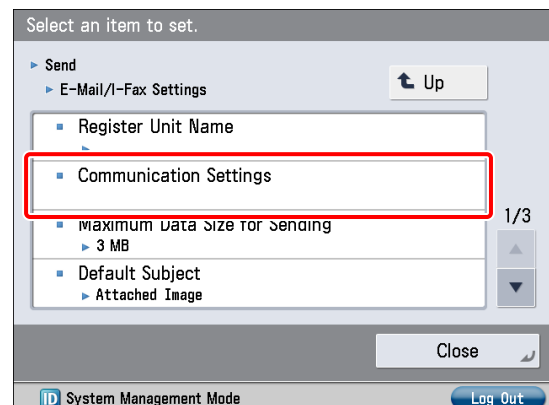
4

Press [E-Mail/I-Fax Settings].



5

Press [Communication Settings].



6 Specify the following settings → press [Next].

In this example, the following values are entered:
[E-Mail Address]: john@example.com
[SMTP Server]: 192.168.1.2

NOTE

You can specify the desired settings for <Use POP RX> and <Use SMTP RX>. For information on the settings, see e-Manual > Settings/Registration > Common Communication Settings for E-Mail/I-Fax.

7 If the [Communication Settings: POP Server Settings] screen is displayed, press [Next].

The [Communication Settings: POP Server Settings] screen is displayed if you set <Use POP RX> on the [Communication Settings: Basic Settings] screen to 'On'.

8 Specify the <SMTP TX> settings → press [Next].

- You can specify the desired settings for <SMTP RX>. To encrypt data to be sent using SSL, set <SMTP TX> to 'On'.
- Even if you select [On] for <SMTP TX>, the data will not be encrypted if the SMTP host does not support encryption.

9 Specify the following settings → press [OK].

In this example, the following settings are specified:
<SMTP Authentication (SMTP AUTH)>: On
[User Name]: user_name
[Password]: password

The settings for sending e-mail/I-faxes are now set.

Sending E-Mail/I-Faxes

Register e-mail/I-fax destinations in the Address Book before sending e-mail.

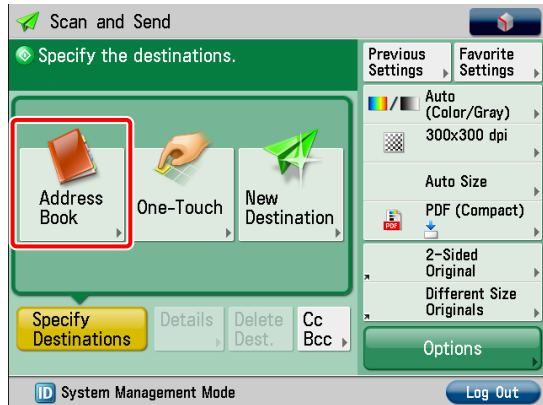
Storing New Destinations

When sending a scanned original using e-mail, register the information for the destination.

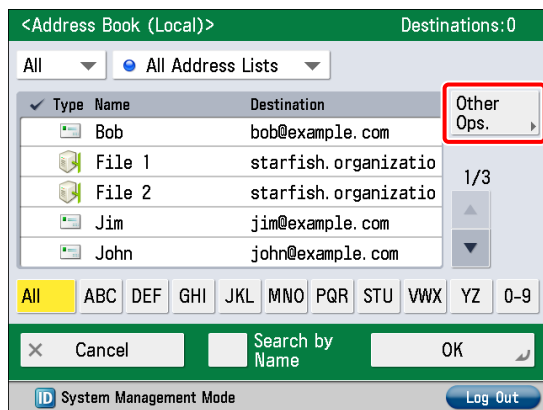
In this example, the e-mail address for the planning department is registered as the destination.

1 Press [Scan and Send].

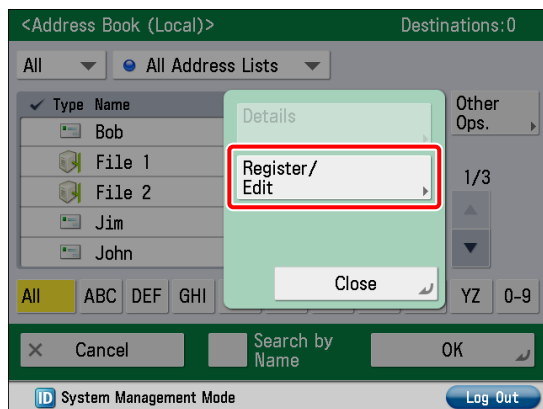
2 Press [Address Book].



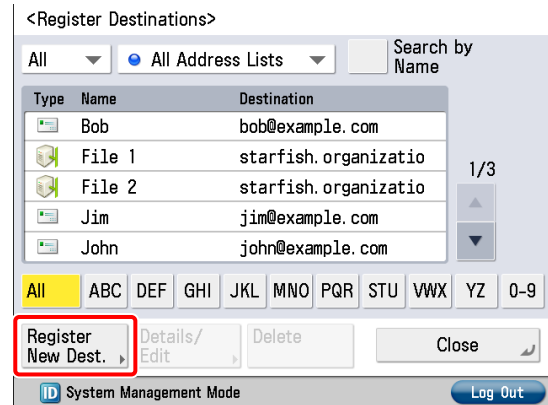
3 Press [Other Ops.].



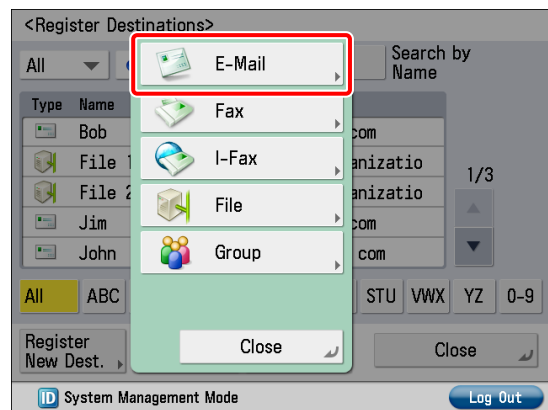
4 Press [Register/Edit].



5 Press [Register New Dest.].

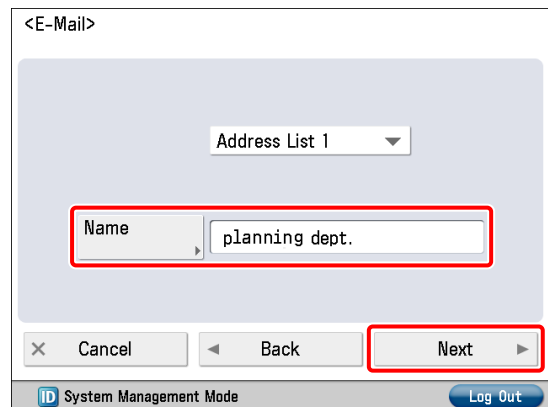


6 Press [E-Mail].



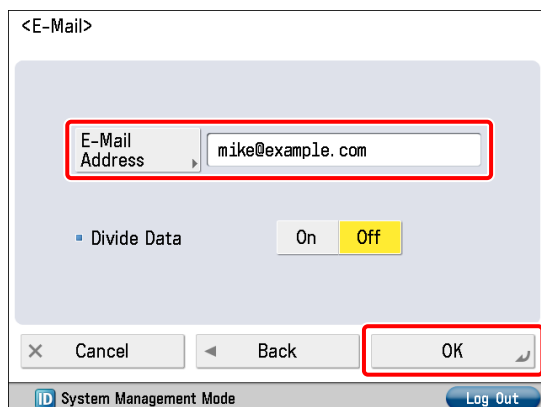
7 Enter the new name → press [Next].

In this example, 'planning dept.' is entered.



8 Enter the e-mail address → press [OK].

In this example, mike@example.com is entered.



9 Press [Close].

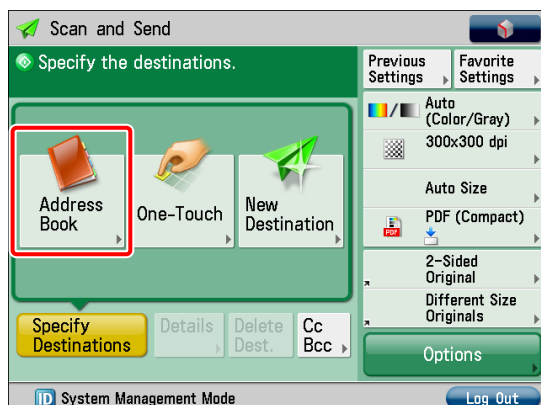
10 Press [OK].

Sending an E-Mail Message

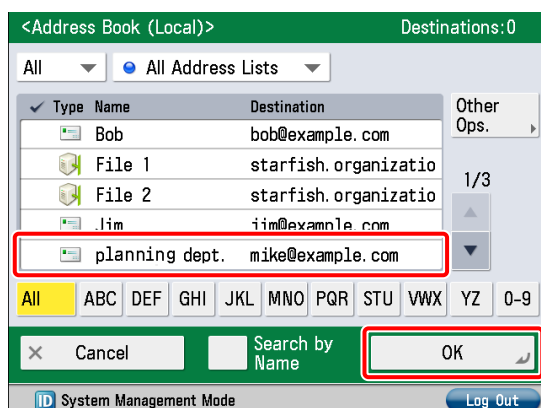
The scanned data is sent to a destination registered in "Storing New Destinations," on p. 21 as an e-mail attachment.

1 Place your originals.

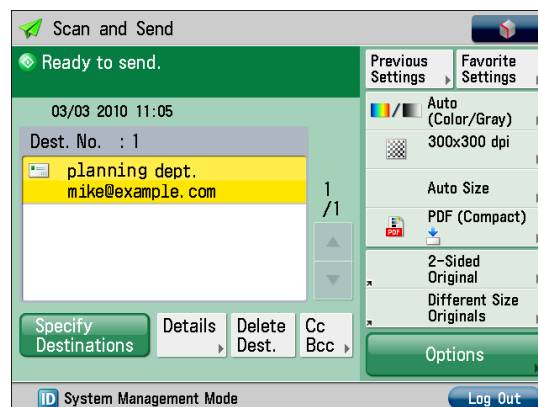
2 Press [Address Book].



3 Select [planning dept.] → press [OK].



4 Change the settings as necessary.

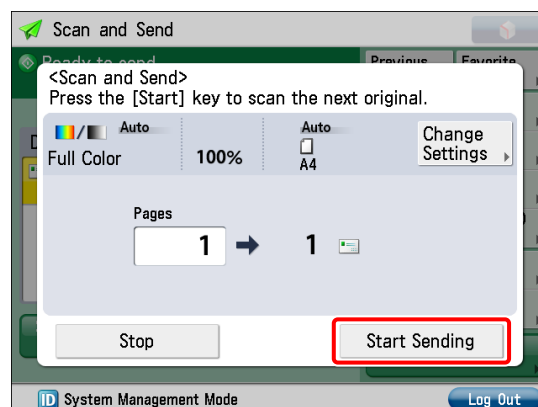


5 Press ⏻ (Start).

If the [Set SMTP Authentication] screen is displayed, enter the user name and password → press [OK].

If the [Original Size] screen is displayed, specify the size of the original → press [OK].

6 Press [Start Sending].



The data is attached to the e-mail and sent.

Sending Scanned Data to a File Server

This example describes the procedure for scanning an original and sending it to a file server (computer) in PDF format.

1. Settings Required to Send Data to a Computer
 - Setting a Computer
2. Scanning and Sending an Original to the Shared Folder of a Computer
 - Storing New Destinations
 - Sending Scanned Data to a Shared Folder

Settings Required to Send Data to a Computer

To send data to a computer, you must specify settings for the shared folder.
The following example describes the procedure for the settings below:

● Computer Settings

TCP/IP Settings

Enable NetBIOS over TCP/IP

Adding users

[User Name]: user_name

[Password]: password


Creating a shared folder

[Share Name]: share

[Permissions]: Full Control

Setting a Computer

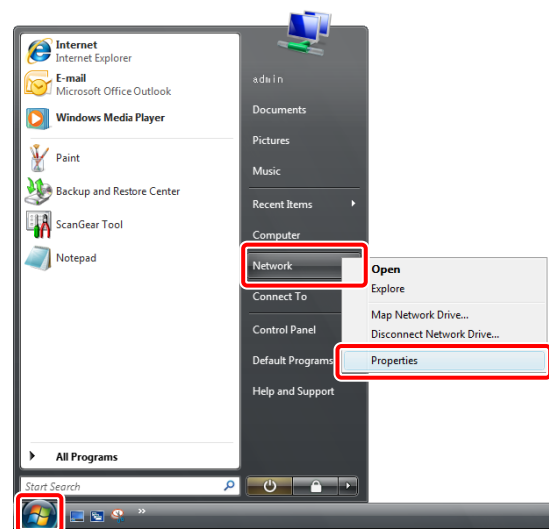
Data scanned with the machine can be saved to a shared folder. The shared folder can be set from your computer.
The following example describes the procedure for setting a shared folder with Windows Vista:

- 1 Log on to Windows with administrator privileges.
- 2 Click  (Start) → right-click [Computer].

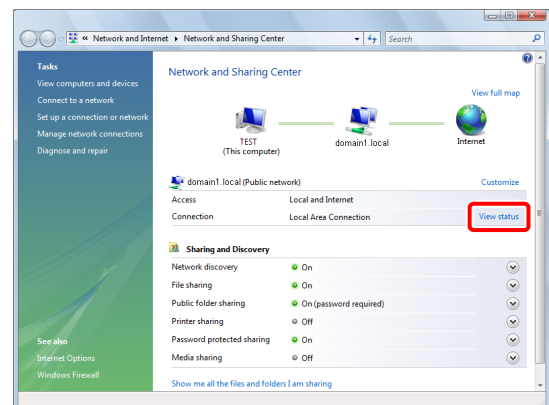
- 3 Click [Properties] → check the computer name.



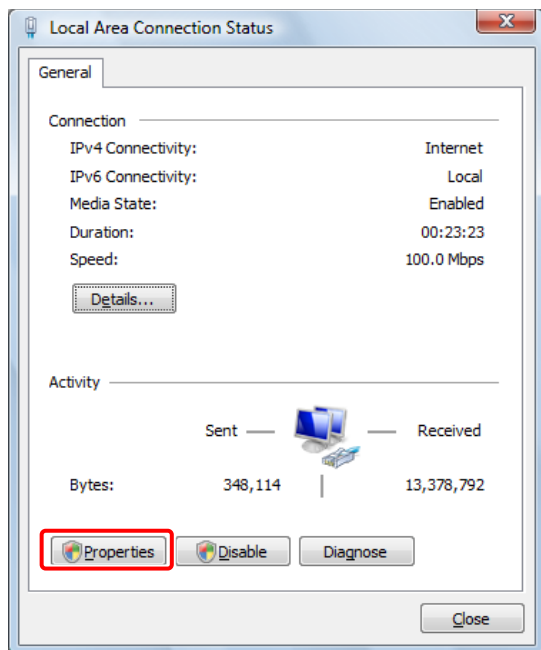
- 4 From the [Start] menu, right-click [Network] → select [Properties].



- 5 Click [View Status] for [Local Area Connection].

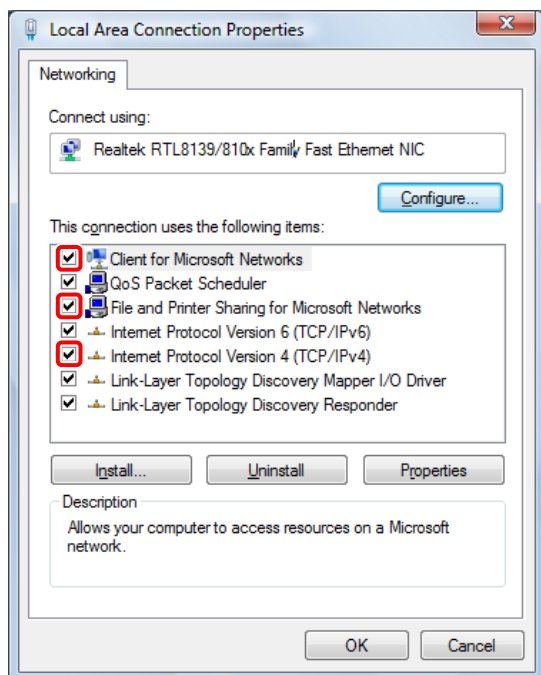


6 Click [Properties].

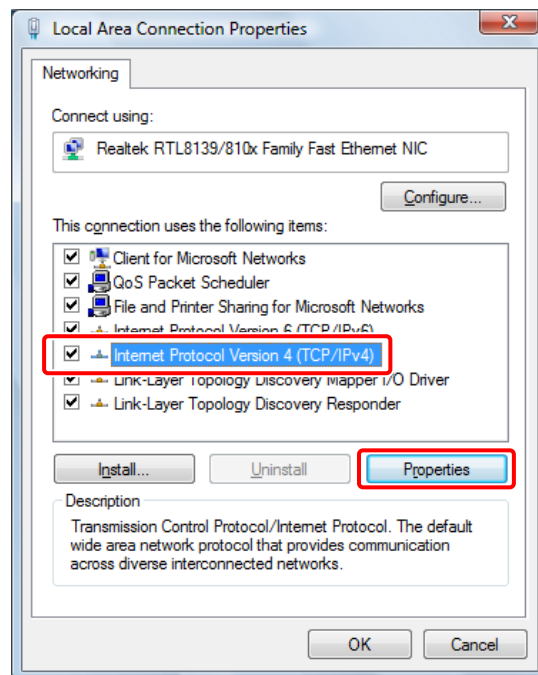


7 Select the following items.

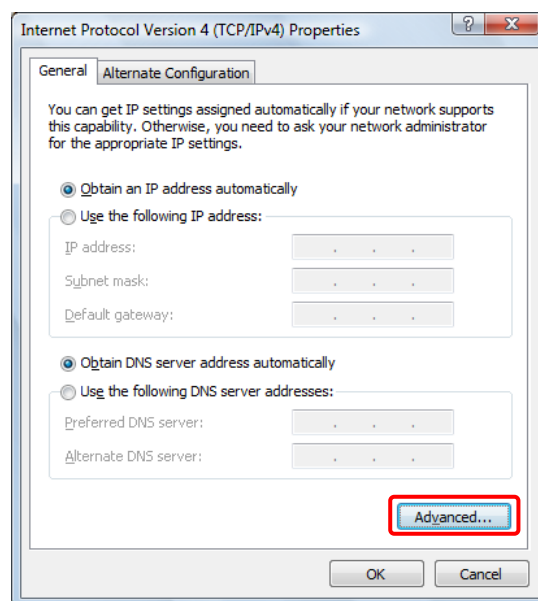
- [Client for Microsoft Networks]
- [File and Printer Sharing for Microsoft Networks]
- [Internet Protocol Version 4 (TCP/IPv4)]



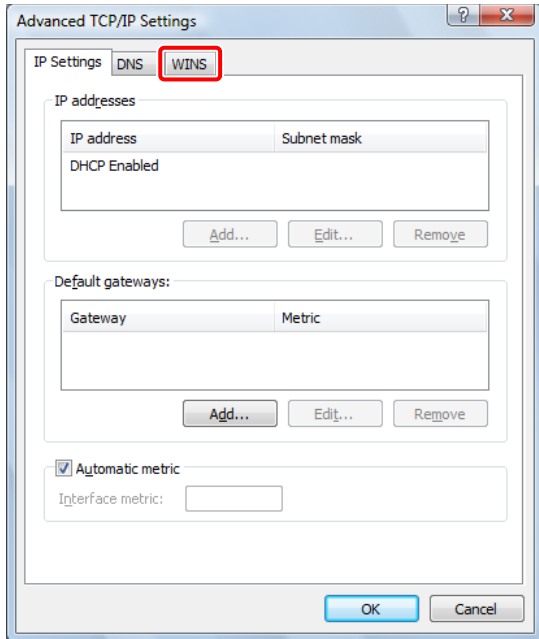
8 Select [Internet Protocol Version 4 (TCP/IPv4)] → click [Properties].



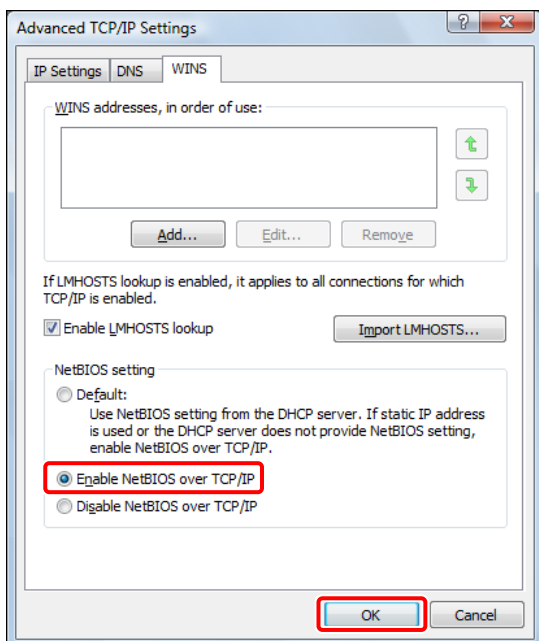
9 Click [Advanced] on the [General] tab.



10 Click the [WINS] tab.



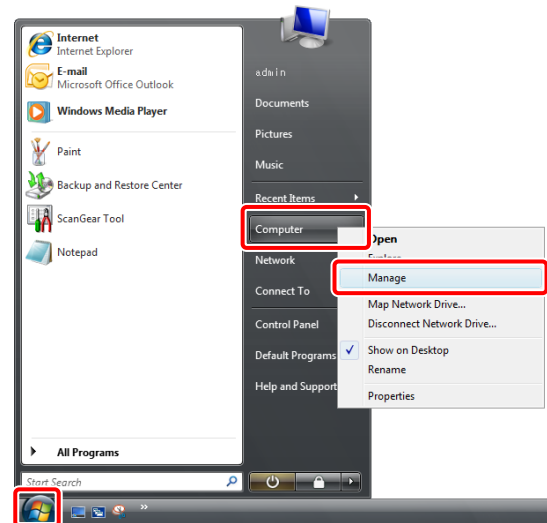
11 Select [Enable NetBIOS over TCP/IP] → click [OK].



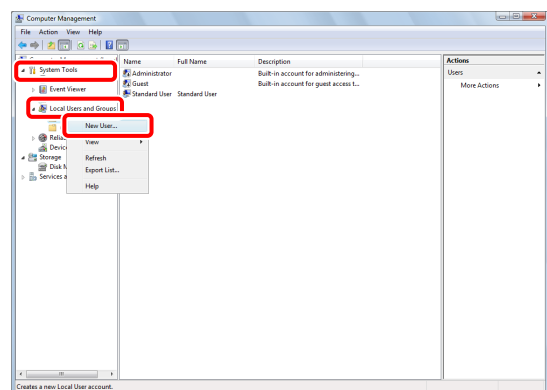
12 Restart the computer.

The network settings are now specified.
Next, create a user for accessing the shared folder from the machine.

13 From the [Start] menu, right-click [Computer] → select [Manage].

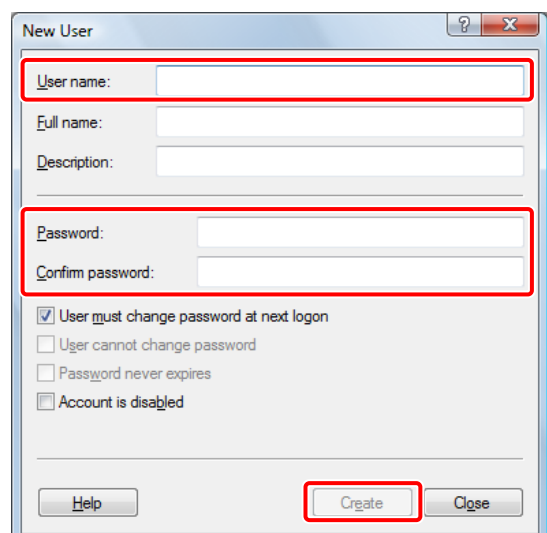


14 Click [Local Users and Groups] in [System Tools] → right-click the [Users] folder → select [New User] from the pop-up menu.



15 Specify the following settings → click [Create] → [Close].

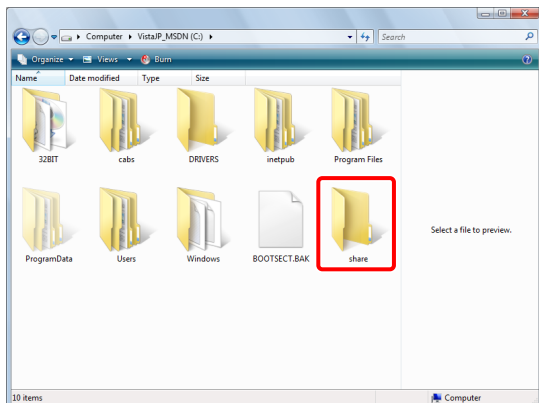
In this example, the following values are entered:
[User Name]: user_name
[Password]: password
[Confirm password]: password



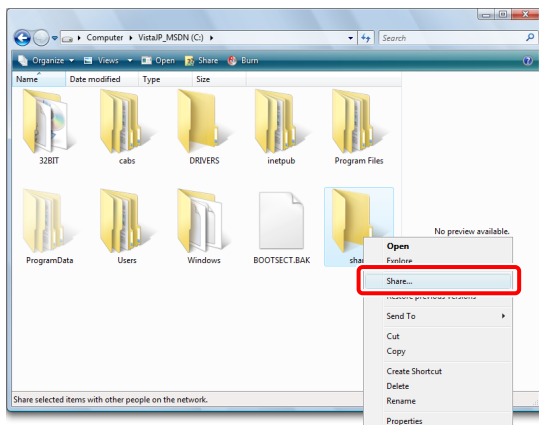
The user is now created.
Next, create a folder for sending data from the machine.

16 Create the folder to save the data to in a location of your choice.

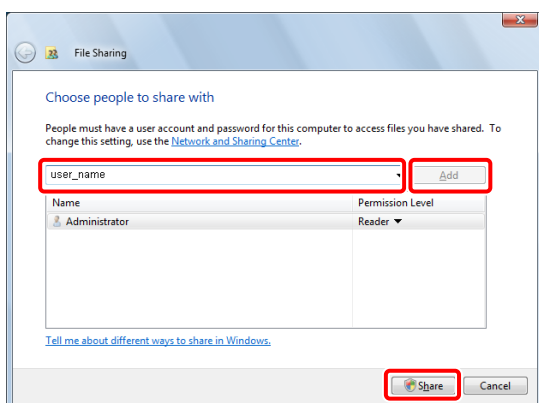
In this example, a folder named 'share' is created.



17 Right-click the folder → select [Share] from the menu that appears.



18 Select the user to perform sharing with → click [Add] → [Share].



19 Click [Done].

The setting of the computer are now specified.

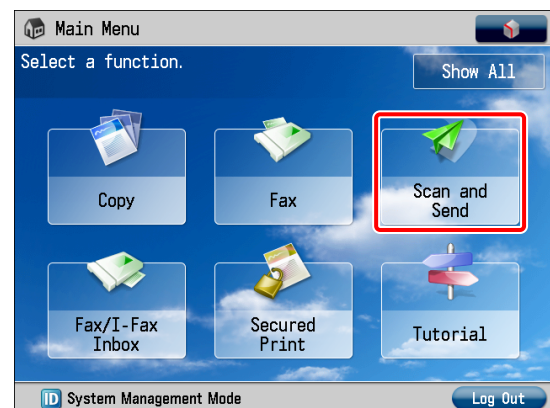
Scanning and Sending an Original to the Shared Folder of a Computer

You can send data scanned with the machine to the shared folder.

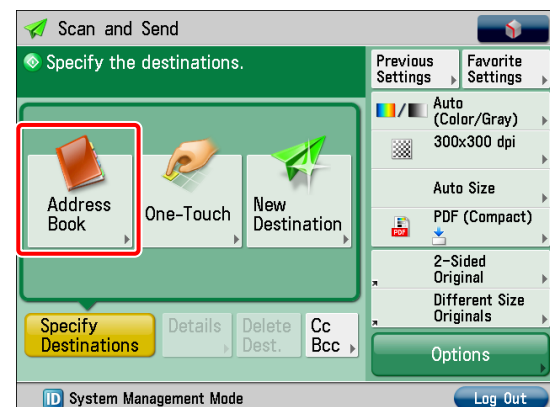
Storing New Destinations

Register the information for the shared folder created in "Setting a Computer," on p. 24 to the Address Book of the machine.

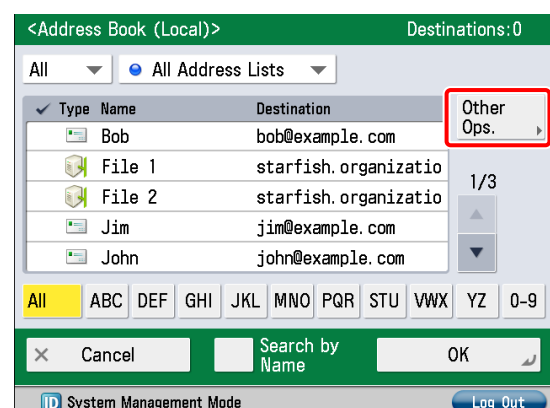
1 Press [Scan and Send].



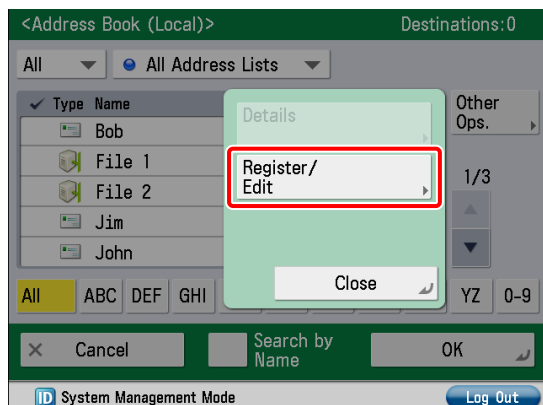
2 Press [Address Book].



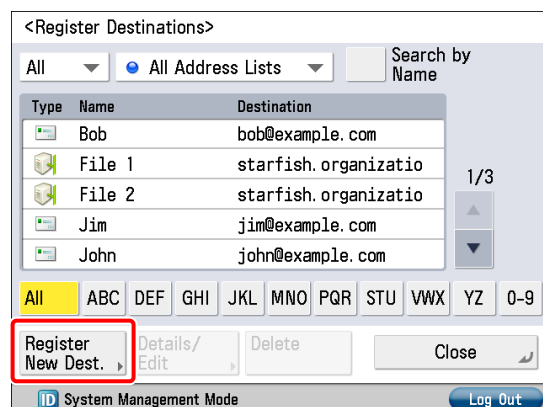
3 Press [Other Ops.].



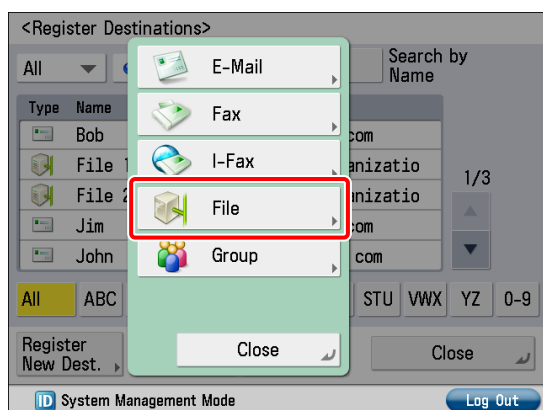
4 Press [Register/Edit].



5 Press [Register New Dest.].

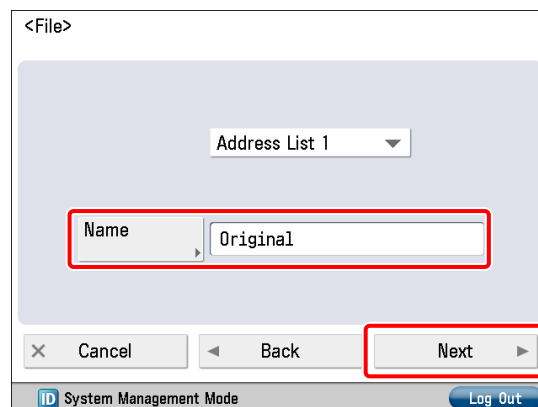


6 Press [File].



7 Enter the new name → press [Next].

In this example, 'Original' is entered.



8 Specify the following settings → press [OK].

[Protocol]: Windows(SMB)

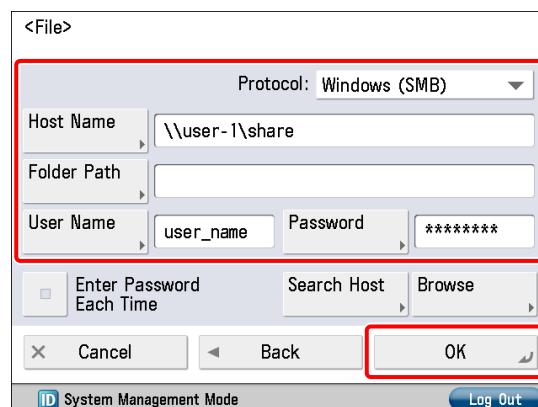
[Host Name]: \\user-1\share

[User Name]: user_name

[Password]: password

- For [Host Name], enter '\\<name of your computer>\<name of the shared folder>'.

- For [Folder Path], enter '\\<name of a folder inside the shared folder>'. This can be omitted as necessary.



9 Press [Close].

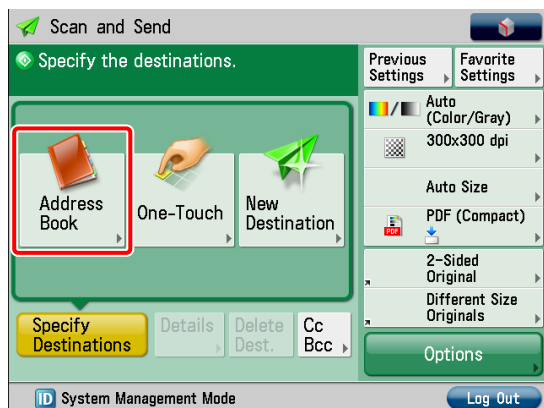
10 Press [OK].

Sending Scanned Data to a Shared Folder

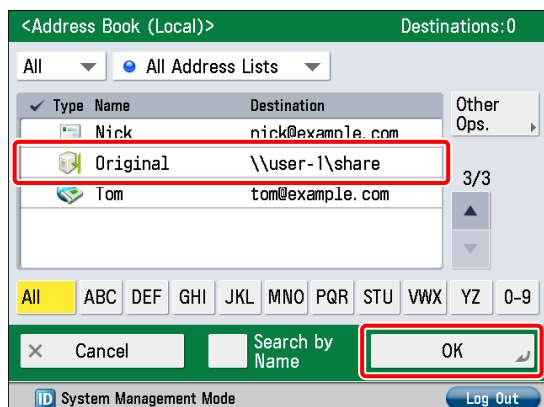
Send a scanned original to the shared folder registered in "Storing New Destinations," on p. 27.

1 Place your originals.

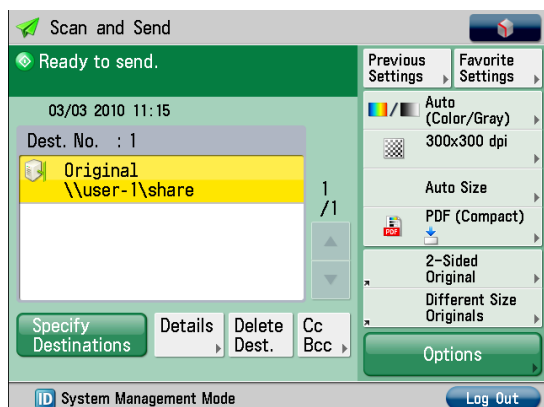
2 Press [Address Book].



3 Select 'Original' → press [OK].



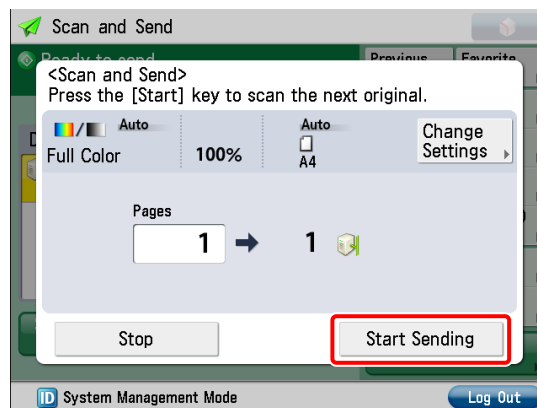
4 Change the settings as necessary.



5 Press (Start).

If the [Original Size] screen is displayed, specify the size of the original → press [OK].

6 Press [Start Sending].



The scanned original is sent to the shared folder.

Sending Faxes

This example describes the procedure for sending a fax.

The flow of operations is indicated below.

1. Settings Required to Send Faxes

- Registering the Fax Number, Unit Name, and Line Type
- Attaching the Sender's Name to Sent Documents

2. Sending Faxes

- Storing New Destinations
- Sending a Fax

Settings Required to Send Faxes

To send a fax, you must specify a fax number, unit name, and other settings.

The following example describes the procedure for the settings below:

Fax Number*1
012XXXXXXX

Unit Name*1
sales dept.

Line Type*1
Tone

TX Terminal ID
Print

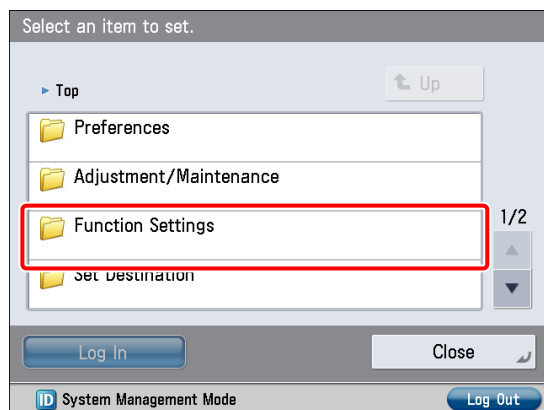
*1 To specify the telephone line settings, you must log in as an administrator. To log in as an administrator, see "Logging In to the Machine as an Administrator," on p. 8.

Registering the Fax Number, Unit Name, and Line Type

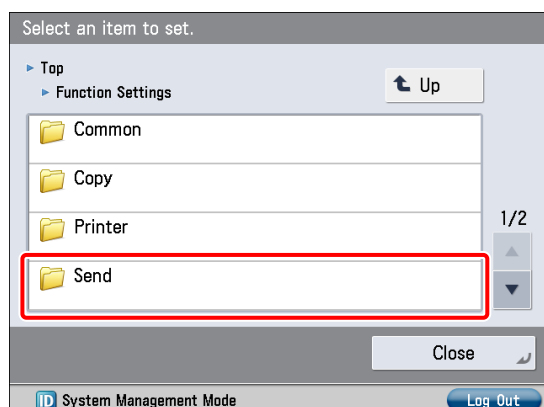
Register the fax number and unit name displayed/printed on the destination machine. Set the line type to 'Tone'.

1 Press  (Settings/Registration).

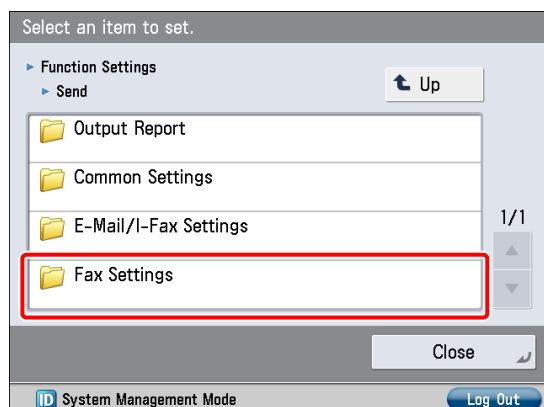
2 Press [Function Settings].



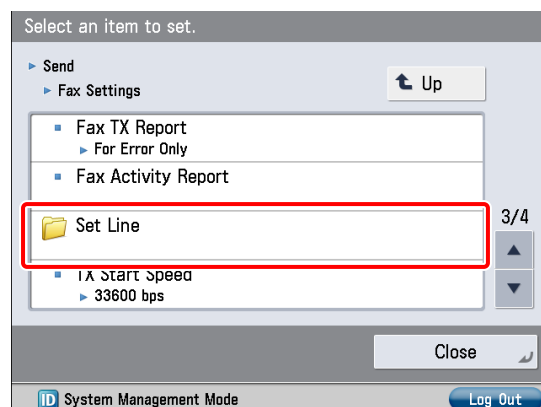
3 Press [Send].



4 Press [Fax Settings].

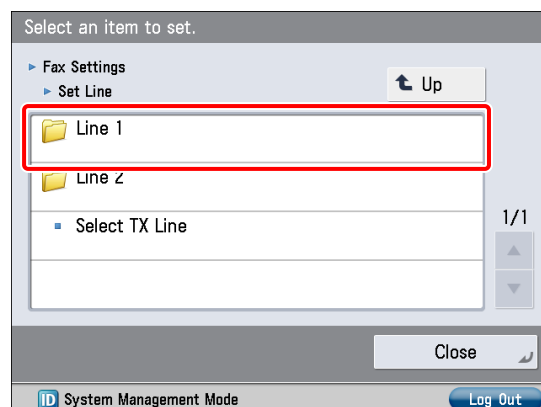


5 Press [Set Line].

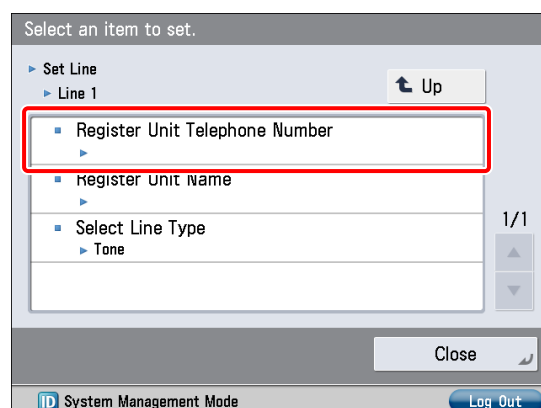


6 Select the desired line.

The number of lines that appear depends on the optional equipment attached to the machine. In this example, 'Line 1' is pressed.

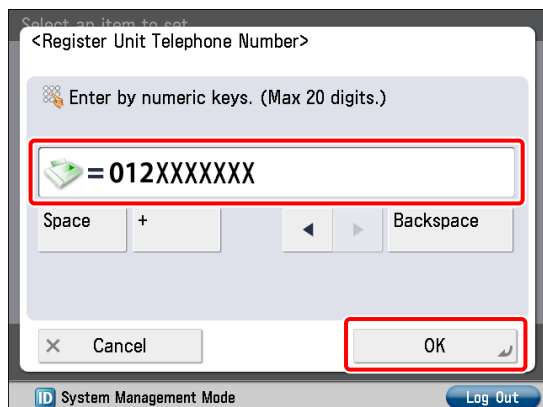


7 Press [Register Unit Telephone Number].



8 Enter the sender's fax number using 0 - 9 (numeric keys).

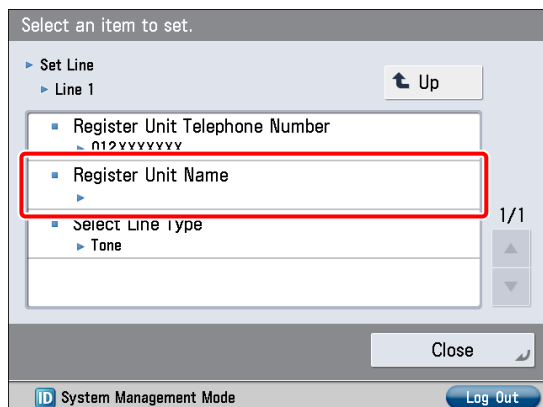
In this example, '012XXXXXXX' is entered.



9 Press [OK].

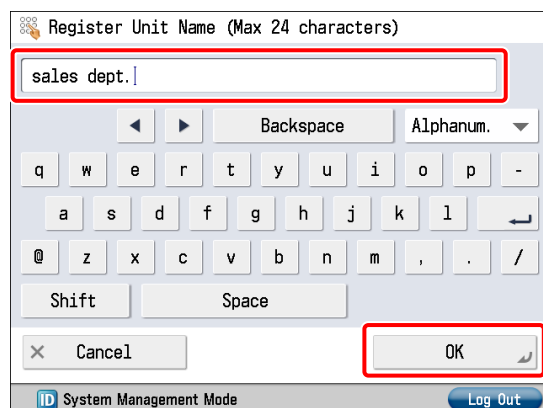
The fax number is now registered. Next, register the unit name.

10 Press [Register Unit Name].



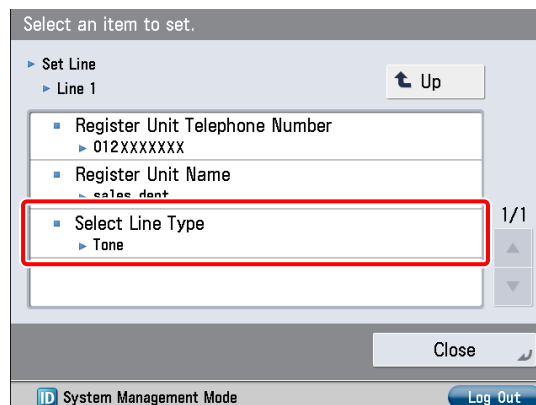
11 Enter the new name → press [OK].

In this example, 'sales dept.' is entered.

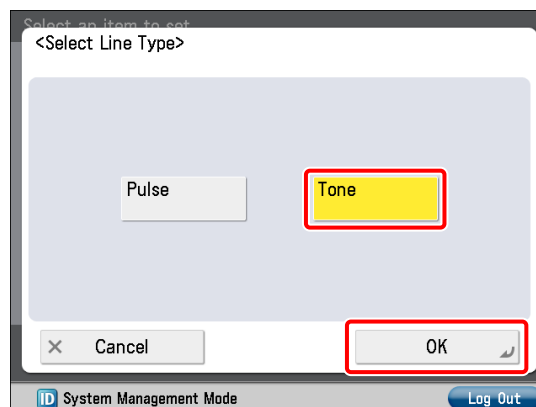


The unit name is now registered. Next, select the line type.

12 Press [Select Line Type].



13 Press [Tone] → [OK].

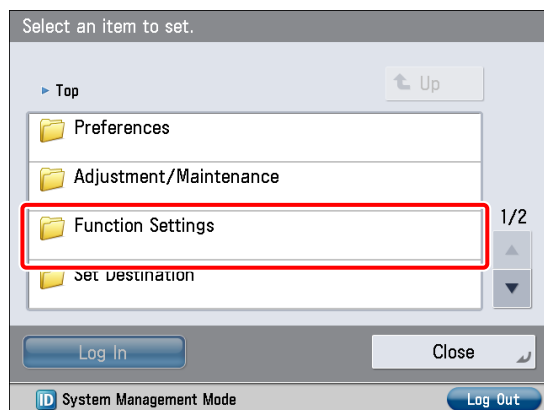


14 Press [Close].

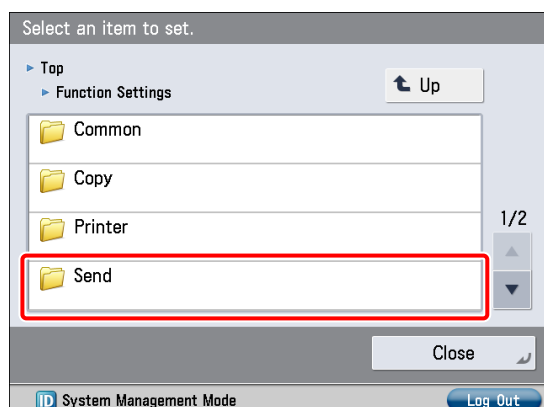
Attaching the Sender's Name to Sent Documents

Set the machine so that information for the sender appears on sent documents.

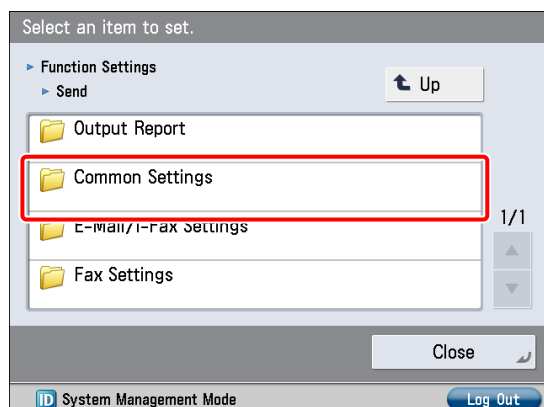
- 1 Press  (Settings/Registration).
- 2 Press [Function Settings].



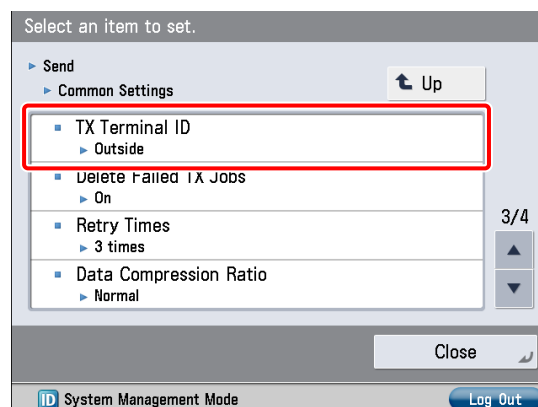
- 3 Press [Send].



- 4 Press [Common Settings].

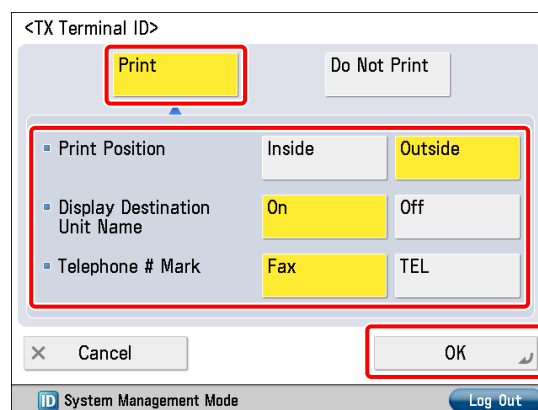


- 5 Press [TX Terminal ID].



- 6 Press [Print] → specify the following settings → press [OK].

In this example, the following settings are specified:
 [Print Position]: [Outside]
 [Display Destination Unit Name]: [On]
 [Telephone # Mark]: [Fax]



- 7 Press [Close].

Sending Faxes

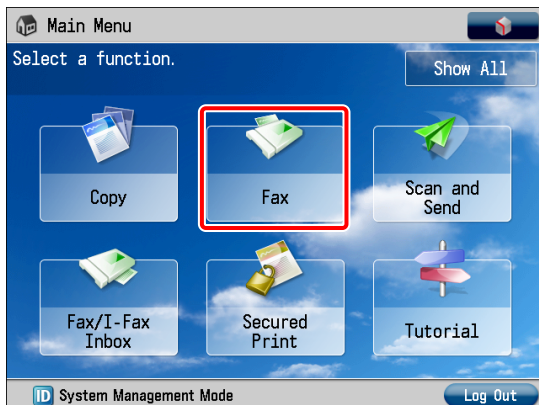
Register the destination in the Address Book to send faxes to.

Storing New Destinations

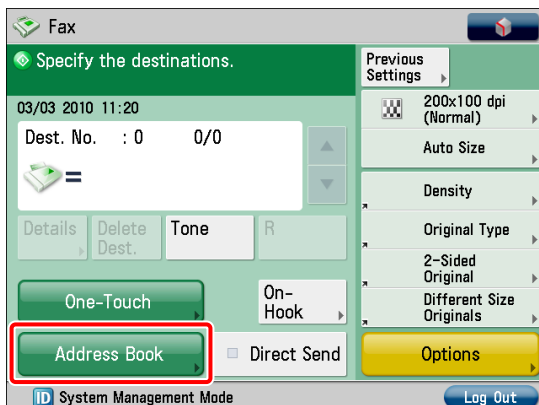
Register the information for the destination in the Address Book.

In this example, information for the “central sales dept.” is registered in the Address Book.

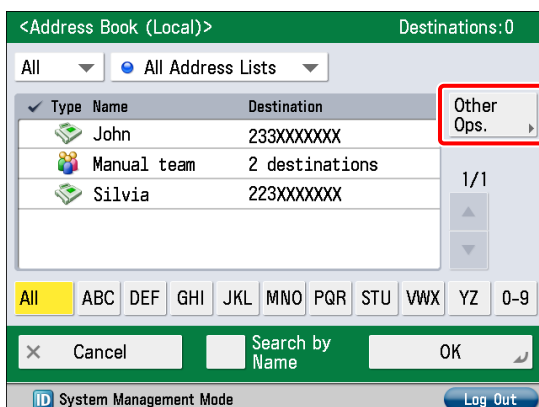
1 Press [Fax].



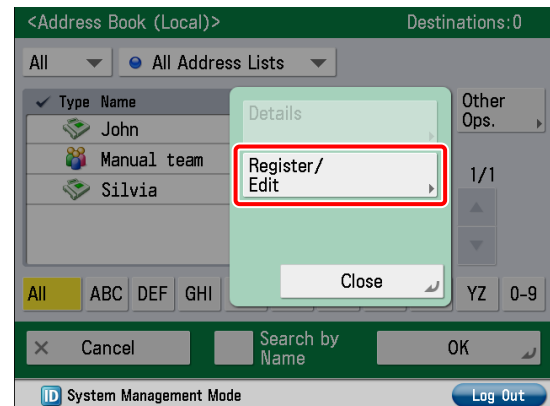
2 Press [Address Book].



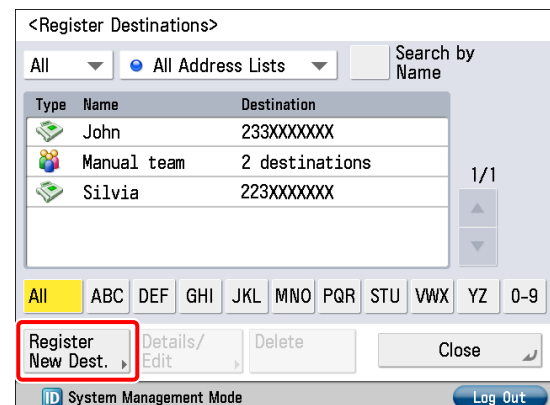
3 Press [Other Ops.].



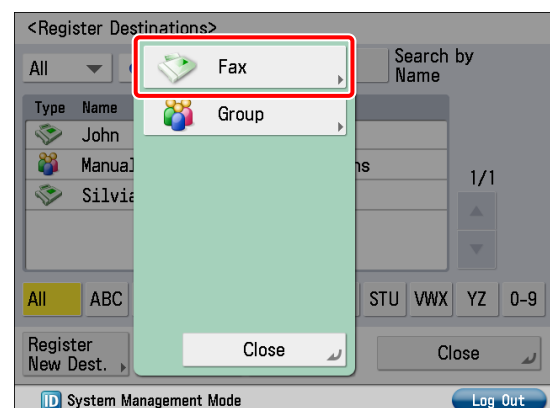
4 Press [Register/Edit].



5 Press [Register New Dest.].



6 Press [Fax].



- 7 Enter the new name → press [Next].
In this example, 'central sales dept.' is entered.

<Fax>

Address List 1

Name central sales dept.

Cancel Back Next

ID System Management Mode Log Out

- 8 Enter the destination fax number using 0 - 9 (numeric keys).
In this example, '123XXXXXX' is entered.

<Fax>

Enter by the numeric keys. (Max 120 digits.)

= 123XXXXXX

Pause Tone Backspace

Space +

R Set Details

Cancel Back OK

ID System Management Mode Log Out

- 9 Press [OK] → [Close].
- 10 Press [OK].

Sending a Fax

Send a fax to the destination registered in "Storing New Destinations," on p. 33.

- 1 Place your originals.
- 2 Press [Address Book].

Fax

Specify the destinations.

03/03 2010 12:39

Dest. No. : 0 0/0

Details Delete Dest. Tone R

One-Touch On-Hook

Address Book Direct Send

Options

Previous Settings

200x100 dpi (Normal)

Auto Size

Density

Original Type

2-Sided Original

Different Size Originals

ID System Management Mode Log Out

- 3 Select [central sales dept.].

<Address Book (Local)> Destinations: 0

All All Address Lists

Tune	Name	Destination	Other Ops.
[Fax]	central sales de	123XXXXXX	1/1
[Fax]	John	233XXXXXX	
[Fax]	Manual team	2 destinations	
[Fax]	Silvia	223XXXXXX	

All ABC DEF GHI JKL MNO PQR STU VWX YZ 0-9

Cancel Search by Name OK

ID System Management Mode Log Out

- 4 Press (Start).
- If the [Original Size] screen is displayed, specify the size of the original → press [OK].
- 5 Press [Start Sending].

Fax

Ready to send

<Fax> Press the [Start] key to scan the next original.

Black 100% Auto A4 Change Settings

Pages 1 → 1

Stop Start Sending

ID System Management Mode Log Out

The fax is sent.

Sending/Receiving Faxes via the Remote Fax Server

By using the Remote Fax function on your machine, you can send/receive faxes using a server machine.

For the purposes of this example, the machine (another imageRUNNER ADVANCE series machine) that forwards the fax is called the "server," and the machine (this machine) from/to which the fax is sent is called the "client." The flow of operations is indicated below.

● Sending a Fax via the Remote Fax Server

1. Settings Required to Send Faxes via the Remote Fax Server
 - Setting the Server
 - Setting the Client
2. Sending Faxes Using the Remote Fax Server

● Receiving a Fax via the Remote Fax Server

1. Settings Required to Receive a Fax via the Remote Fax Server
 - Setting the Server
 - Setting the Client

Settings Required to Send Faxes via the Remote Fax Server

To send a remote fax, it is necessary to specify the following settings.

● Server Settings

[Use Remote Fax]

On

● Client Settings

[Remote Fax TX Settings]

[IP Address]: 192.168.1.24 (IP address of the server)

Setting the Server

To use another imageRUNNER ADVANCE series machine with a fax board as a server, you must specify the Remote Fax TX settings on that machine.

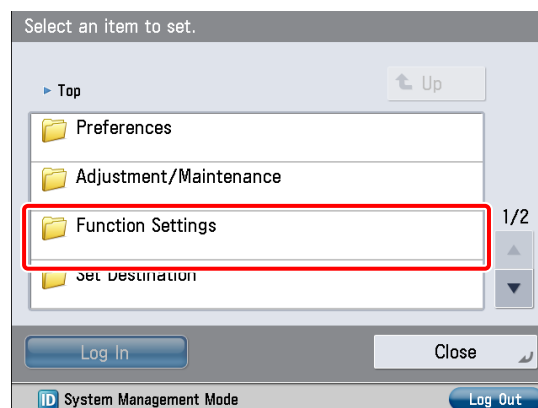
For more information, see the instruction manuals for the other imageRUNNER ADVANCE series machine.

Setting the Client

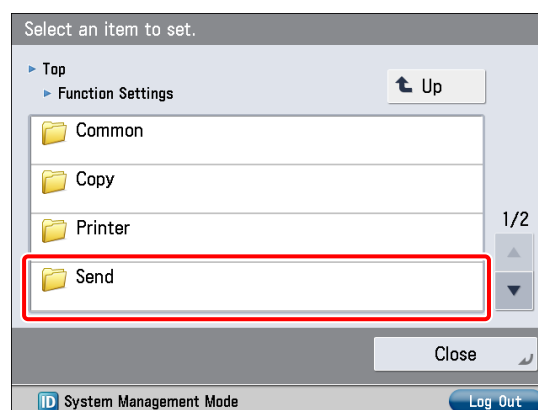
Set the IP address of the server to send using in the client machine.

1 Press  (Settings/Registration).

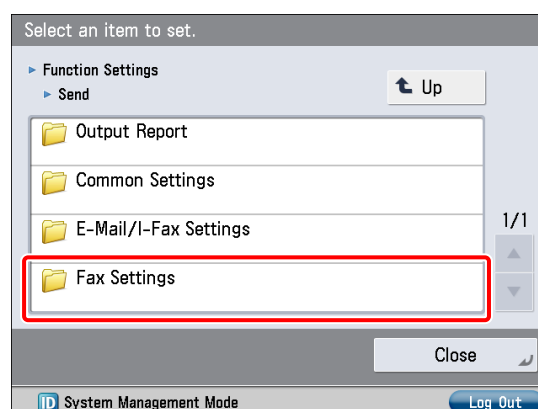
2 Press [Function Settings].



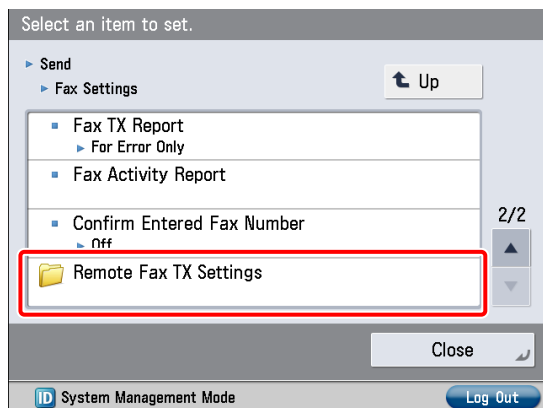
3 Press [Send].



4 Press [Fax Settings].

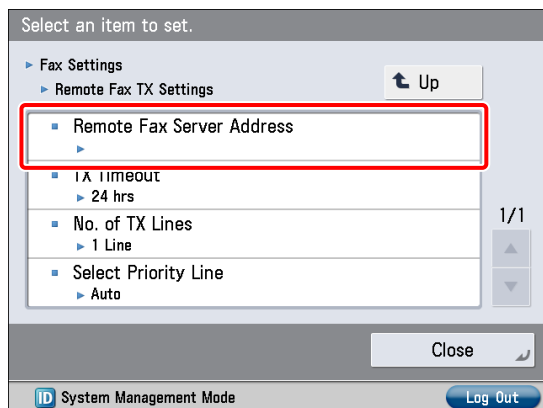


5 Press [Remote Fax TX Settings].



6 Press [Remote Fax Server Address] → enter the IP address → press [OK].

In this example, '192.168.1.24' is entered for the IP address of the server.



7 Press [Close].

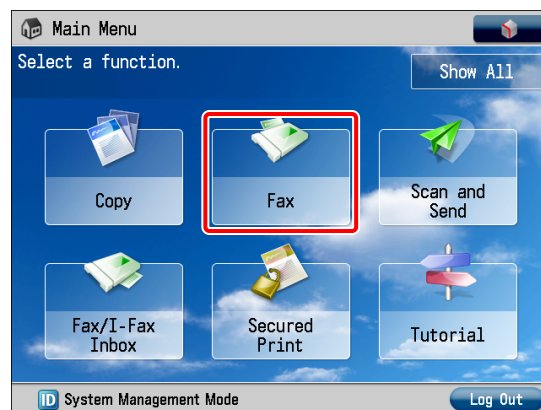
The client settings are now specified.

Sending Faxes Using the Remote Fax Server

Send faxes using the remote fax server.

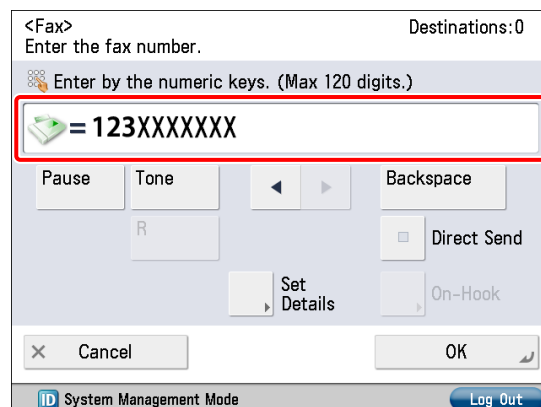
1 Place your originals.

2 Press [Fax].



3 Enter the destination fax number using 0 - 9 (numeric keys).

In this example, '123XXXXXX' is entered.



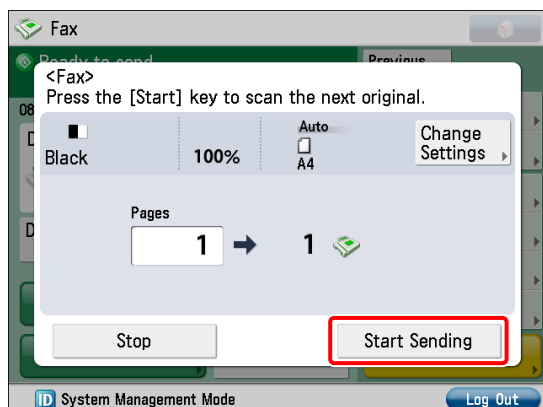
NOTE

You can also specify a destination from the Address Book. For more information, see "Sending Faxes," on p. 33.

4 Press (Start).

If the [Original Size] screen is displayed, specify the size of the original → press [OK].

5 Press [Start Sending].



The fax is sent.

Settings Required to Receive a Fax via the Remote Fax Server

To receive a remote fax using the Remote Fax server, you must specify settings for the server machine and client machine respectively.

● Server Settings

Forwarding Settings

● Client Settings

I-Fax Settings

Setting the Server

To receive a remote fax using the Remote Fax server, you must specify the settings on the server machine so that the received fax data is forwarded to the client machine as an I-fax.

To forward fax data, you must register the client machine's I-fax address as a forwarding destination on the server machine, and specify the forwarding conditions as necessary.

For more information on forwarding settings, see e-Manual > Settings/Registration.

Setting the Client

To receive a remote fax using the Remote Fax server, you must specify the settings on the client machine so that the fax data to be received is forwarded from the server machine as an I-fax.

For more information on I-fax settings, see e-Manual > Settings/Registration.

Sending Faxes from a Computer Using the Machine

This example describes the procedure for sending a document created on a computer as a fax using the machine.

The flow of operations is indicated below.

1. Settings Required to Send Faxes from a Computer

- Installing the Fax Driver

2. Sending Faxes from a Computer

NOTE

- The procedure for displaying the fax driver screen may differ depending on the applications you are using. For details, see the instruction manuals provided with the application software.
- The display may differ according to the operating system and version of the fax driver.

Settings Required to Send Faxes from a Computer

To send a fax from your computer using the machine, you must install the fax driver in your computer. After installing the fax driver, specify the fax settings.

Installing the Fax Driver

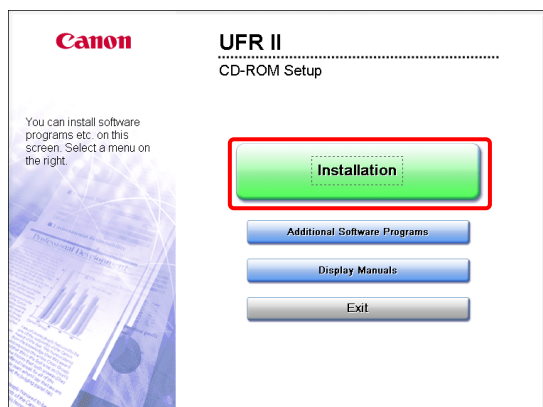
This example describes the procedure for installing the fax driver for Windows Vista.

1

Insert the CD-ROM (the CD-ROM that contains the fax driver) into your computer.

In this example, the Windows fax driver is used.

- 2 On the CD-ROM Menu screen, click [Installation].

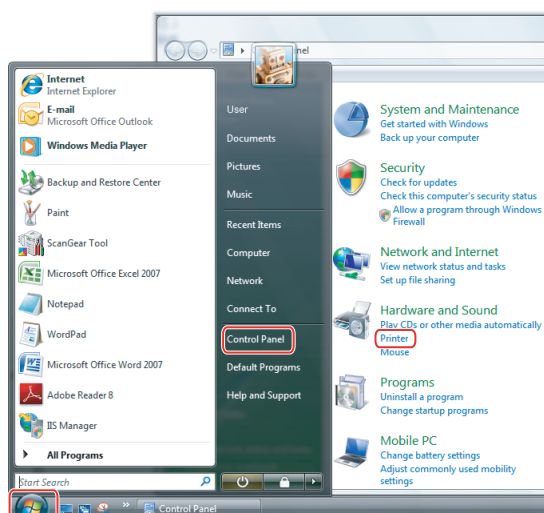


To browse the Fax Driver Installation Guide, click [Display Manuals] before you click [Installation].

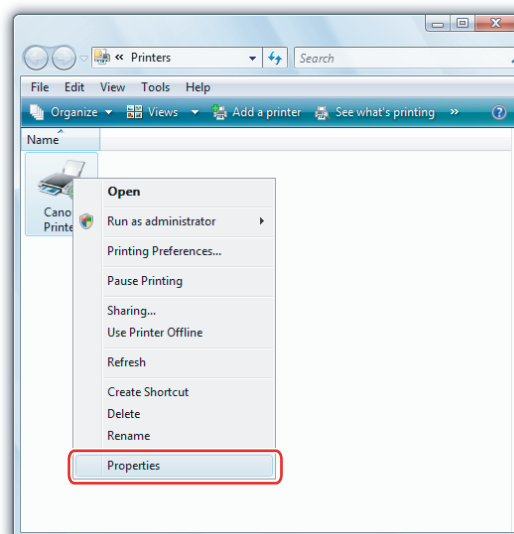
- 3 Follow the instructions on the screen to complete the installation.

The fax driver is now installed.
Next, set the fax environment.

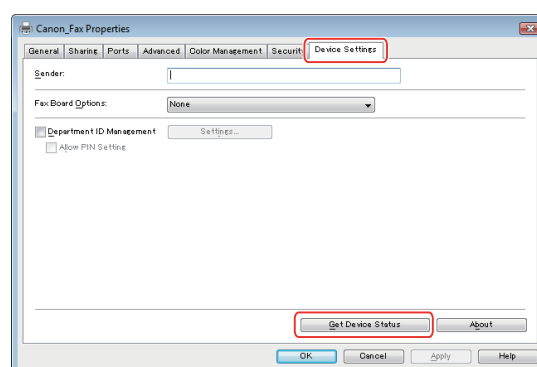
- 4 Click (Start) → [Control Panel] → [Printer] in Windows.



- 5 Right-click the icon of the fax you use → select [Properties].



- 6 Click the [Device Settings] tab → [Get Device Status].



- 7 Click [OK].

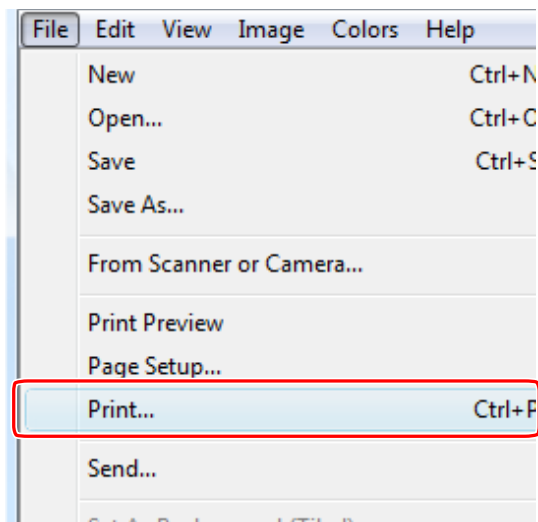
The fax environment settings are now specified.

Sending Faxes from a Computer

Specify a destination and send a fax. The following example describes the procedure for sending a document, created using Microsoft Word 2007.

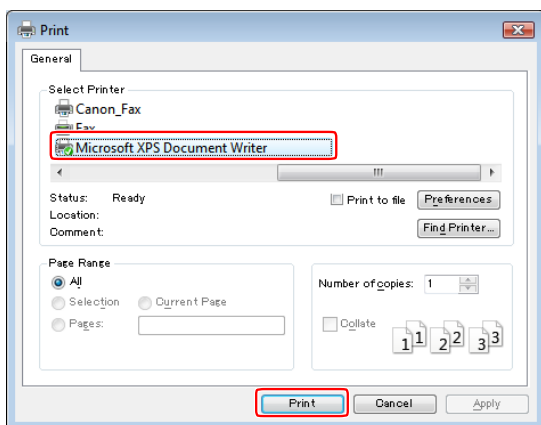
- 1 On your computer, open the document to send using the fax function.

- 2 Select [Print] from the menu.



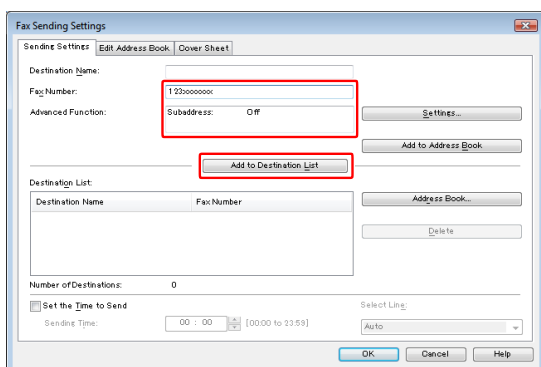
The [Print] dialog box is displayed.

- 3 Select the fax name to use → click [Print].

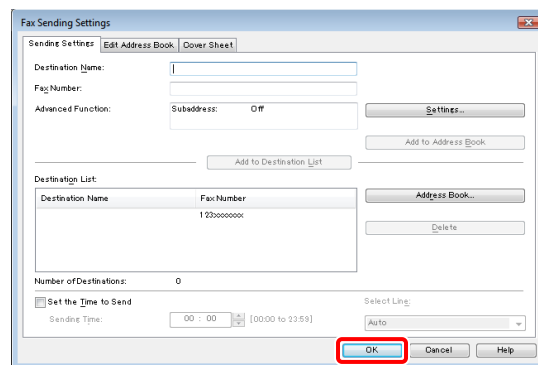


The [Fax Sending Settings] dialog box is displayed.

- 4 On the [Sending Settings] sheet, enter the recipient's name and fax number → click [Add to Destination List].



- 5 Click [OK].



The fax is sent.

Printing a Document from a Computer

To perform printing, it is necessary to install the printer driver in a computer. After installing the printer driver, specify the printing preferences.

1. Settings Required to Print from a Computer

- Installing the Printer Driver

2. Printing from a Computer

NOTE

- Printing methods may differ depending on the applications you are using. For details, see the instruction manuals provided with the application software.
- The display may differ according to the operating system, as well as the type and version of the printer driver.

Settings Required to Print from a Computer

A printer driver is software required for printing from application software.

It is necessary to install a printer driver in a computer to use the Print function.

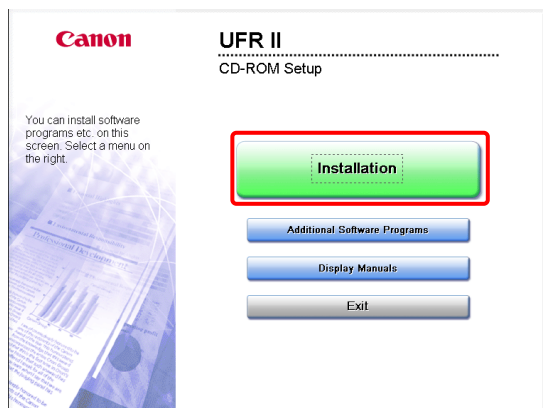
Installing the Printer Driver

This example describes the procedure for installing the printer driver for Windows Vista.

- 1 Insert the CD-ROM (the CD-ROM that contains the printer driver) into your computer.

In this example, the LIPS LX printer driver for Windows is used.

- 2 On the CD-ROM Menu screen, click [Installation].

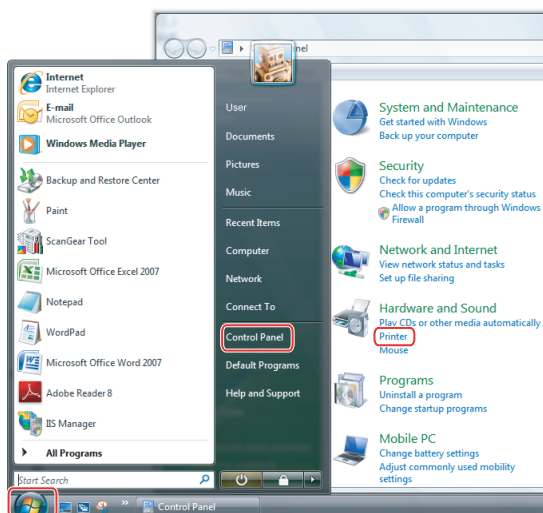


To browse the Printer Driver Installation Guide, click [Display Manuals] before you click [Installation].

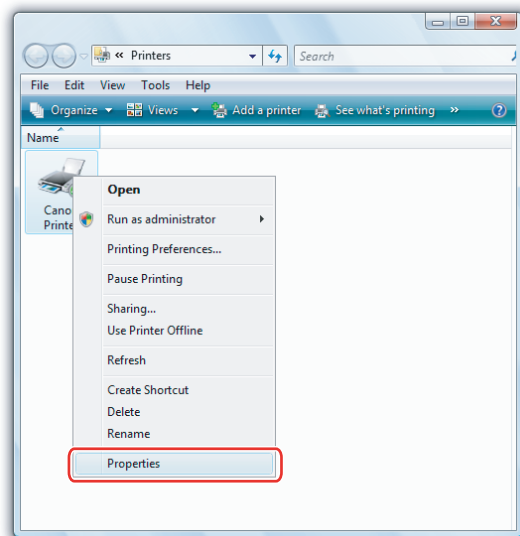
- 3 Follow the instructions on the screen to complete the installation.

The printer driver is now installed.
Next, set the printer environment.

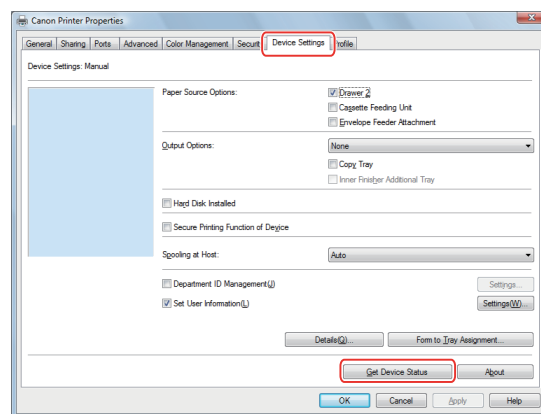
- 4 Click (Start) → [Control Panel] → [Printer] in Windows.



- 5 Right-click the icon of the printer → select [Properties].



- 6 Click the [Device Settings] tab → [Get Device Status].



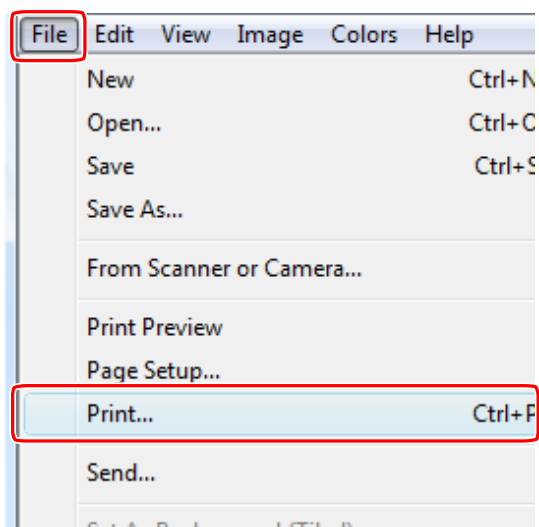
- 7 Click [OK].

The printer environment settings are now specified.

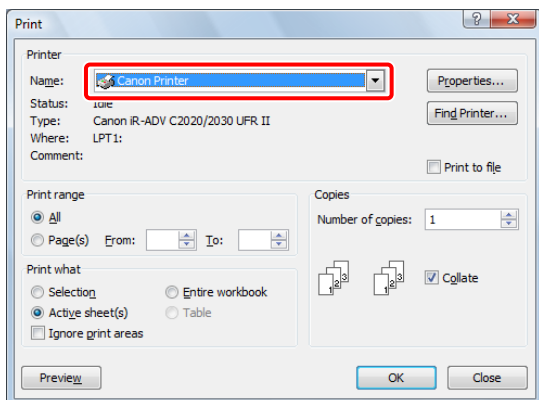
Printing from a Computer

Print documents created on your computer with the machine. The following example describes the procedure for printing a document, created using Microsoft Word 2007, in color:

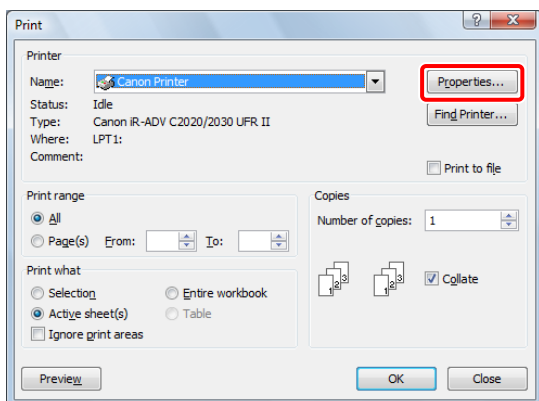
- 1 Open the Word document you want to print → click [File] → [Print].



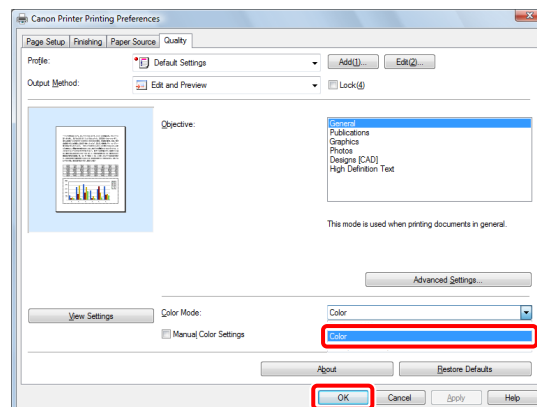
- 2 Select the printer you use for [Name].



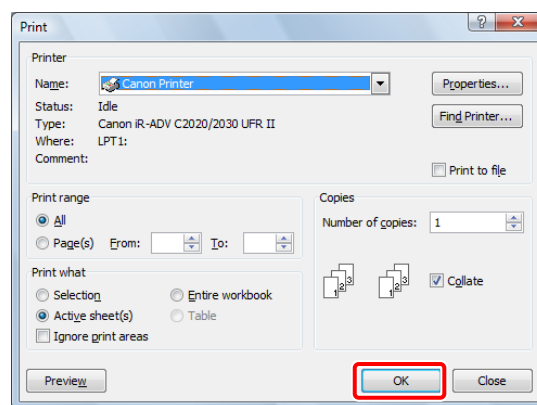
- 3 Click [Properties].



- 4 Select [Color] for [Color Mode] in the [Quality] sheet → click [OK].



- 5 Set the range to print and the number of copies → click [OK].



The document is printed.

Scanning an Original

This example describes the procedure for specifying the settings required for scanning, and for scanning an original into your computer: The flow of operations is indicated below.

1. Settings Required to Perform Scanning

- Installing the Scanner Driver
- Setting Remote Scanning Online

2. Scanning an Original

NOTE

- Remote scanning methods may differ depending on the applications you are using. For details, see the instruction manuals provided with the application software.
- The window displayed may differ according to the operating system etc.

Settings Required to Perform Scanning

To use the Scan function of the machine, it is necessary to install the scanner driver (software for specifying scanner settings).

The scanner driver can be installed from the same User Software CD-ROM used for installing the printer driver. After that, specify the settings to use the remote scanner on the machine.

The flow of operations is indicated below.

[Scanner] screen on the machine:
Online

[ScanGear Tool] on your computer:
The name of your scanner

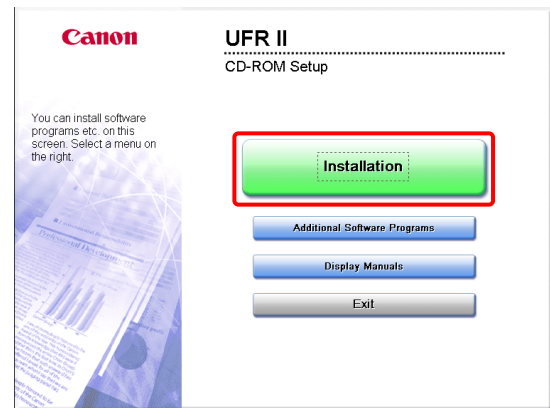
Installing the Scanner Driver

This example describes the procedure for installing the scanner driver for Windows Vista.

1 Insert the CD-ROM in your computer.

Color Network ScanGear is used here.

2 On the CD-ROM Menu screen, click [Installation].



To browse the Network ScanGear User's Guide, click [Display Manuals] before you click [Installation].

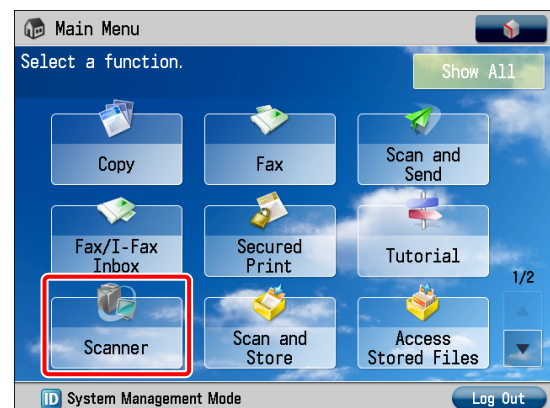
3 Follow the instructions on the screen to complete the installation.

The scanner driver is now installed.
Next, enable remote scanning.

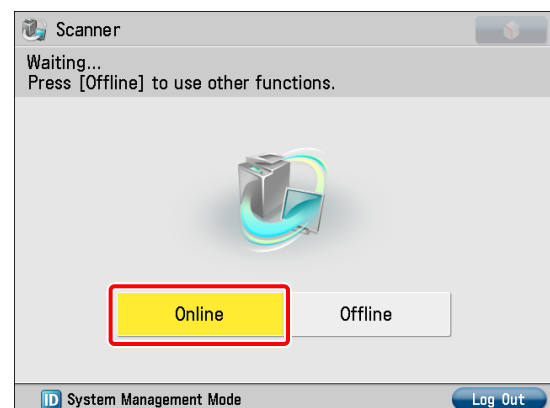
Setting Remote Scanning Online

To use the Scan function, it is necessary to enable remote scanning on the machine and enable the network scanner to use on your computer.

1 Press [Scanner].




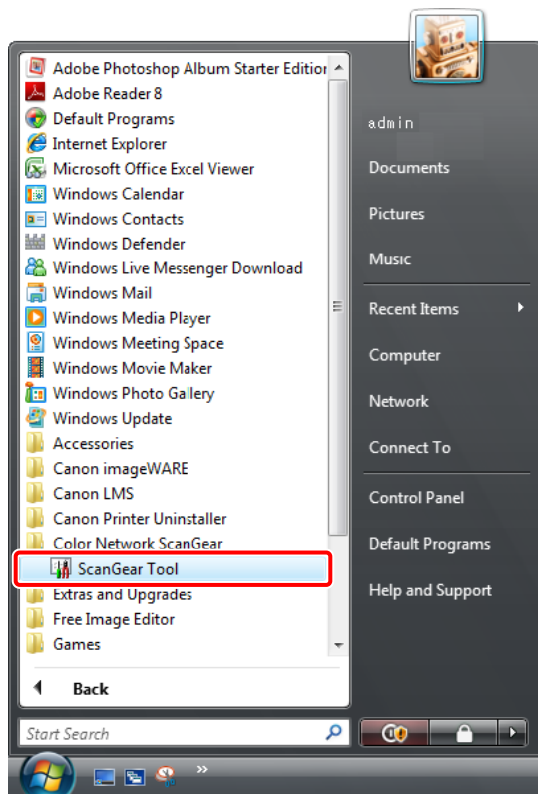
2 Press [Online] on the [Scanner] screen.



The scanner is now online.

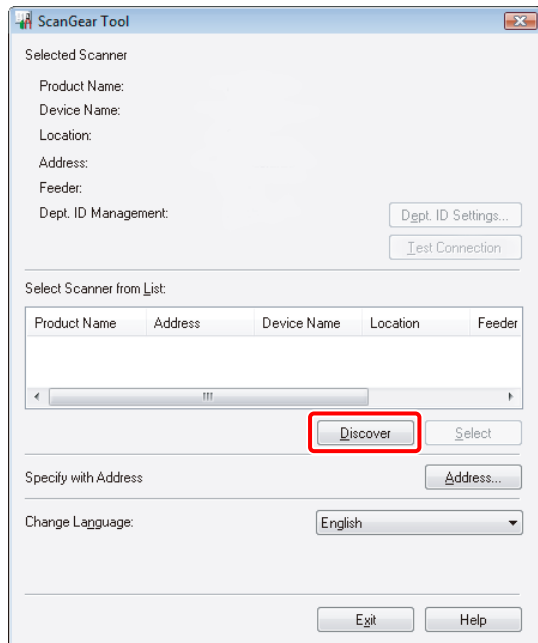
Scanned data from your computer can now be received.
Next, set the scanner to use on your computer.

- 3 Click  (Start) → [Programs] → [Color Network ScanGear] → [ScanGear Tool].



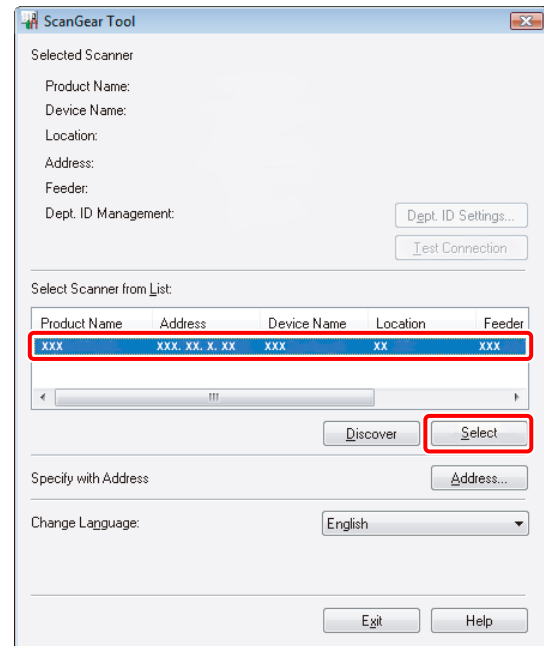
ScanGear Tool is started.

- 4 Click [Discover].



Scanners on the network are automatically discovered, and the searched scanners are displayed in [Select Scanner from List].

- 5 Select the scanner to use → click [Select].



- 6 Click [Exit].

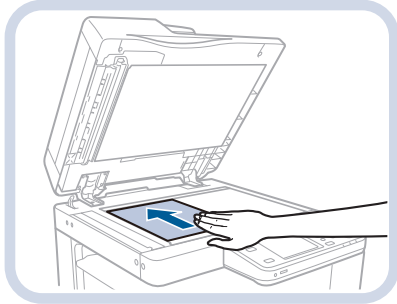
ScanGear Tool is closed.

Remote scanning is now enabled.

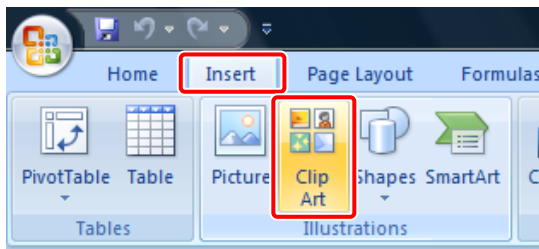
Scanning an Original

The following example describes the procedure for placing an original on the platen glass of the machine, and using remote scanning from your computer to paste the data into a Microsoft Office Word 2007 document:

- 1 Confirm that remote scanning is online.
- 2 Place the original on the platen glass.

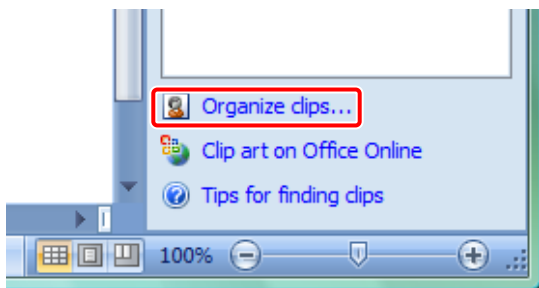


- 3 Start Microsoft Office Word 2007.
- 4 Click the [Insert] tab → click [Clip Art].



The [Clip Art] pane is displayed.

- 5 Click [Organize clips].

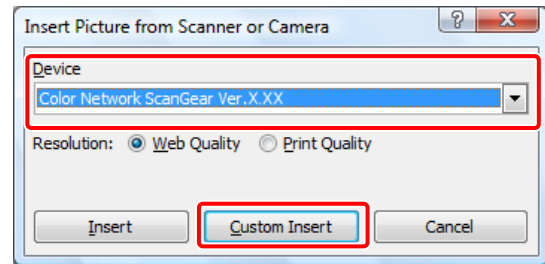


Microsoft Clip Organizer is started.

- 6 Select [File] → [Add Clips to Organizer] → [From Scanner or Camera].

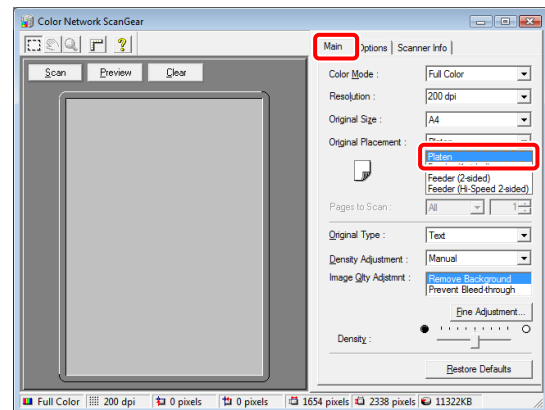
The [Insert Picture from Scanner or Camera] dialog box is displayed.

- 7 From the [Device] drop-down list, select Color Network ScanGear → click [Custom Insert].



Color Network ScanGear screen is displayed.

- 8 Click the [Main] tab → select [Platen] for <Original Placement>.



- 9 Specify the scanning conditions, such as color mode and resolution.

Click [Preview] to view a preview.

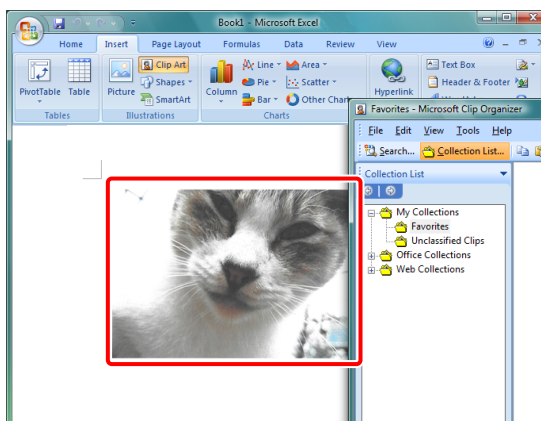
- 10 Click [Scan].

Scanning starts.

When scanning is complete, the Color Network ScanGear screen closes and the scanned image is transferred to [Color Network ScanGear Vx.xx] in [My Collections] in Microsoft Clip Organizer.

- 11 Open a document using Microsoft Word 2007.

- 12 Drag the image scanned using Microsoft Clip Organizer, and drop it into the area where you want to add the image.



The image is added to the area where drag-and-drop was performed.

Using an Advanced Box on the Network

You can store originals scanned using your machine in the Advanced Box of another imageRUNNER ADVANCE series machine on the network that can be accessed by your machine. You can also print the files stored in an Advanced Box of another imageRUNNER ADVANCE series machine, from your machine.

The following example describes the procedure for storing an original scanned using your machine as a PDF file in an Advanced Box of another imageRUNNER ADVANCE series machine that has been made accessible on the network as an SMB server.

The flow of operations is indicated below.

1. Settings Required to Use an Advanced Box on the Network

- Making an Advanced Box Accessible on the Network (Specified by an Administrator for the Machine to Open the Advanced Box)
- Accessing an Advanced Box on the Network (Specified on this Machine)

2. Storing Data in an Advanced Box on the Network

Settings Required to Use an Advanced Box on the Network

To store scanned originals in an Advanced Box on the Network, you must specify the following settings:

● Another imageRUNNER ADVANCE Series Machine

- Making the Advanced Box Accessible on the Network as an SMB Server
- Specifying the SMB Server Settings

● This machine

[Network Place Settings]

[Name]: images

[Protocol]: SMB

[Location]: \\192.168.1.23\share

[Protocol for External Reference]

[SMB]: On

[Store Location Display Settings]

[Network]: On

Making an Advanced Box Accessible on the Network

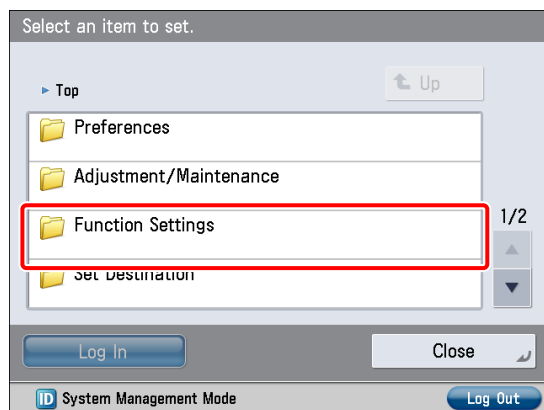
On the machine with the Advanced Box to be shared, specify the settings to make the Advanced Box accessible on the network as an SMB server, and specify the SMB server settings. For more information, see the instruction manual for the machine with the Advanced Box to be shared.

Accessing an Advanced Box on the Network

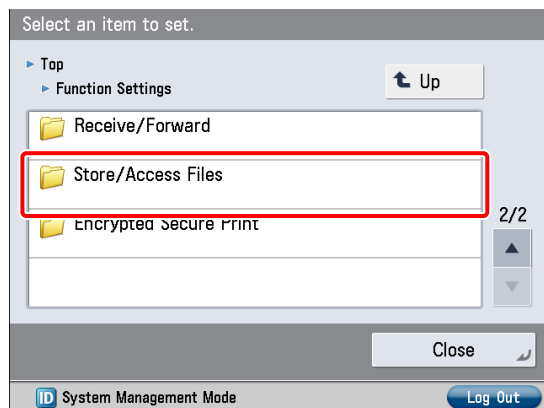
Specify the Network Place and Protocol for External Reference settings, followed by the Store Location Display settings.

1 Press  (Settings/Registration).

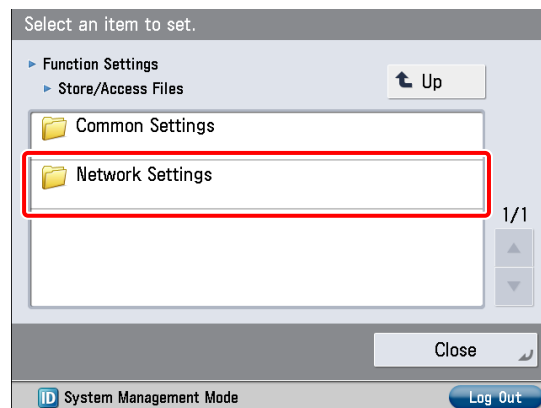
2 Press [Function Settings].



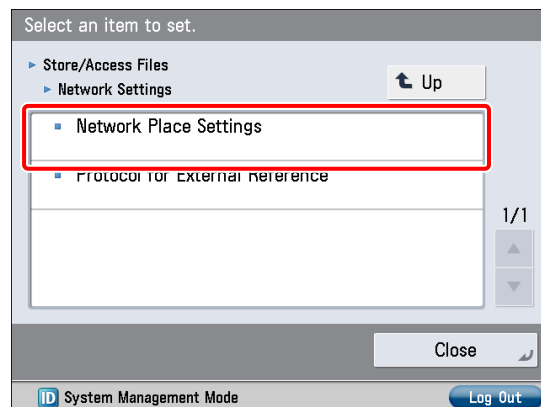
3 Press [Store/Access Files].



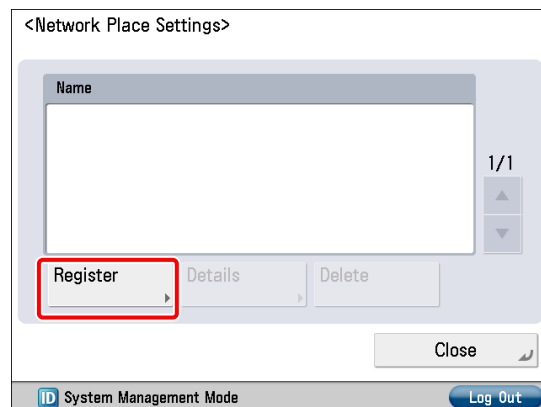
4 Press [Network Settings].



5 Press [Network Place Settings].



6 Press [Register].



7 Specify the following settings → press [OK].

In this example, the following settings are specified:

[Name]: images

<Protocol>: SMB

[Location]: \\192.168.1.23\share

<Network Place Settings: Register>

Name: images

Protocol: SMB

Location: \\192.168.1.23\share

Ex. \\server01\share
https://webdav-server1/users

Cancel OK

ID System Management Mode Log Out

8 Press [Close].

The Network Place Settings are now set.

Next, specify the Protocol for External Reference settings.

9 Press [Protocol for External Reference].

Select an item to set.

Store/Access Files

Network Settings

Network Place Settings

Protocol for External Reference

Close

ID System Management Mode Log Out

10 Select [On] for <SMB> → press [OK].

Select an item to set.

<Protocol for External Reference>

SMB

On Off

WebDAV

On Off

Cancel OK

ID System Management Mode Log Out

The Protocol for External Reference settings are now set.

Next, specify the Store Location Display Settings.

11 Press (Settings/Registration).

12 Press [Preferences].

Select an item to set.

Top

Preferences

Adjustment/Maintenance

Function Settings

Set Destination

Log In Close

ID System Management Mode Log Out

13 Press [Display Settings].

Select an item to set.

Top

Preferences

Paper Settings

Display Settings

Timer/Energy Settings

Network

Close

ID System Management Mode Log Out

14 Press [Store Location Display Settings].

Select an item to set.

Preferences

Display Settings

Default Screen at Startup

Main Menu

Default Screen (Status Monitor/Cancel)

Display Fax Function

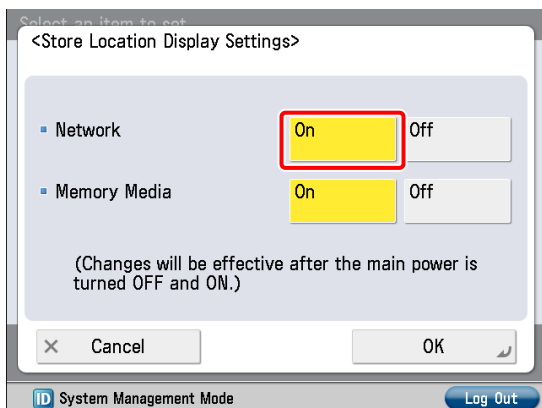
On

Store Location Display Settings

Close

ID System Management Mode Log Out

15 Press [On] for <Network> → press [OK].



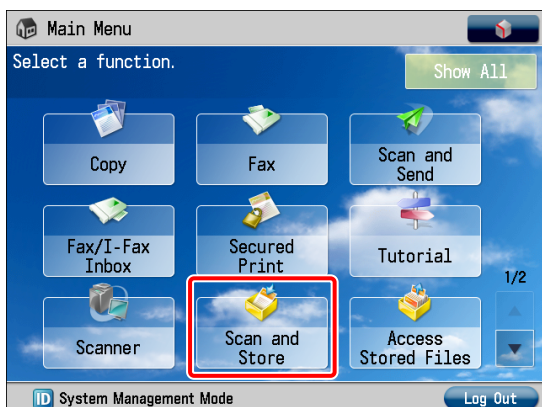
The Store Location Display Settings are now set.

Storing Data in an Advanced Box on the Network

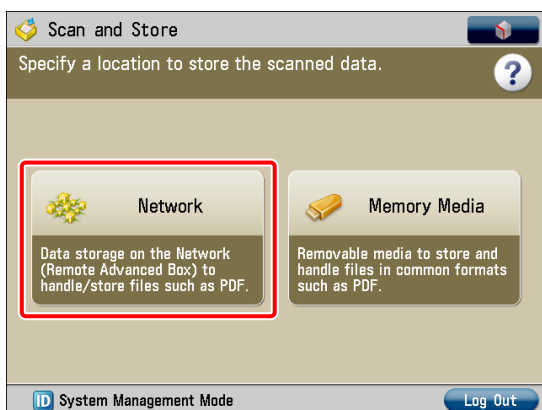
Save data scanned on the machine to the Advanced Box of another imageRUNNER ADVANCE machine on the network.

1 Place your original on the machine.

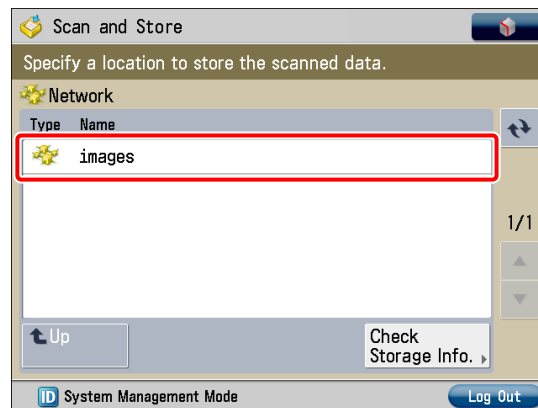
2 Press [Scan and Store].



3 Press [Network].

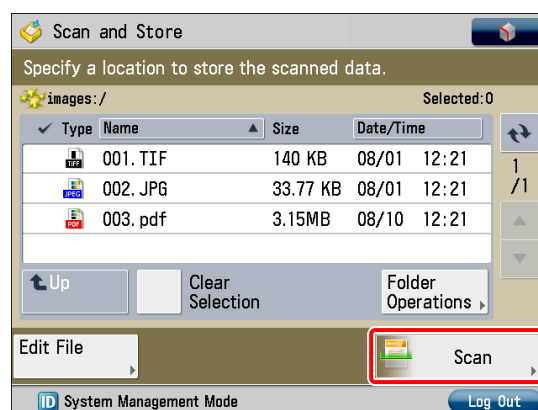


4 Select the desired storage location.

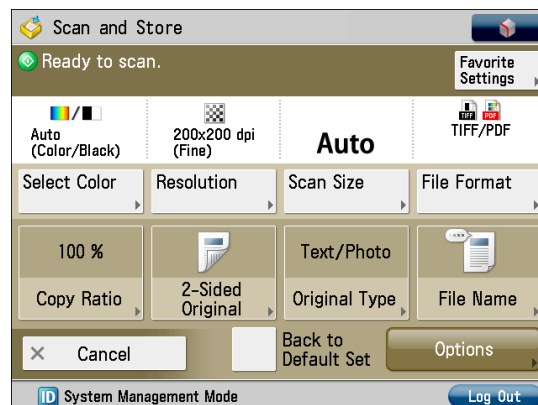


If an authentication screen is displayed, enter the user name and password to log in.

5 Press [Scan].



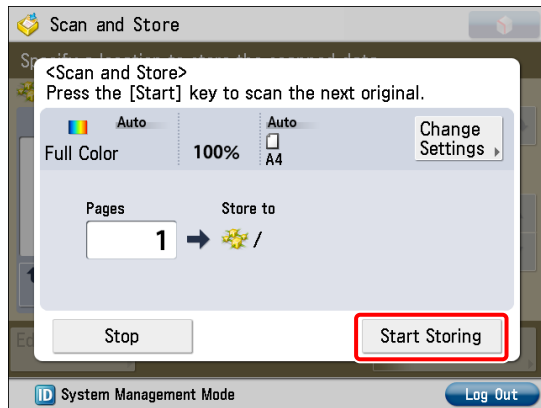
6 Specify each of the settings such as [File Format].



7 Press (Start).

If the [Scan Size] screen is displayed, specify the scan size → press [OK].

8 Press [Start Storing].



The scanned document is saved to the Advanced Box of another imageRUNNER ADVANCE machine on the network.

9 Press [Close].



Setting Up the Machine for the First Time

Using the System Options/MEAP Applications

3

Installing the System Options/MEAP Applications52

- Installing by Connecting This Machine to an Outside Network52
- Installing by Not Connecting This Machine to an Outside Network52

License Registration53

- System Options/MEAP Applications53
- Installing the System Options/MEAP Applications53

Installing by Connecting This Machine to an Outside Network54

- Using the Touch Panel Display to Install (Delivery)54
- Using the Remote UI to Install (Delivery)56

Installing by Not Connecting This Machine to an Outside Network57

- Obtaining the License Key/License File57
- Installing the System Options Using the Touch Panel Display57
- Installing the System Options Using the Remote UI (Manual)58
- Installing the MEAP Applications Using the Remote UI (Manual)58
- Starting the MEAP Applications59

Downloading the Manuals and Related Software60

Managing by Using the Touch Panel Display60

- Displaying the Installation Log Using the Touch Panel Display60
- Testing Communication Using the Touch Panel Display61

Managing by Using the Remote UI62

- Displaying the Installation Log Using the Remote UI62
- Testing Communication Using the Remote UI62

Updating the Firmware63

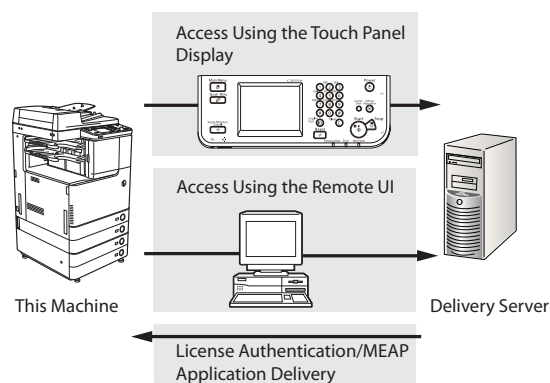
- Updating Firmware63
- Updating Using the Remote UI (Manual)63

Installing the System Options/MEAP Applications

Using the Register/Update Software function, you can install the System Options/MEAP Applications to the machine. You can use this function from both the touch panel display and the computer (Remote UI).

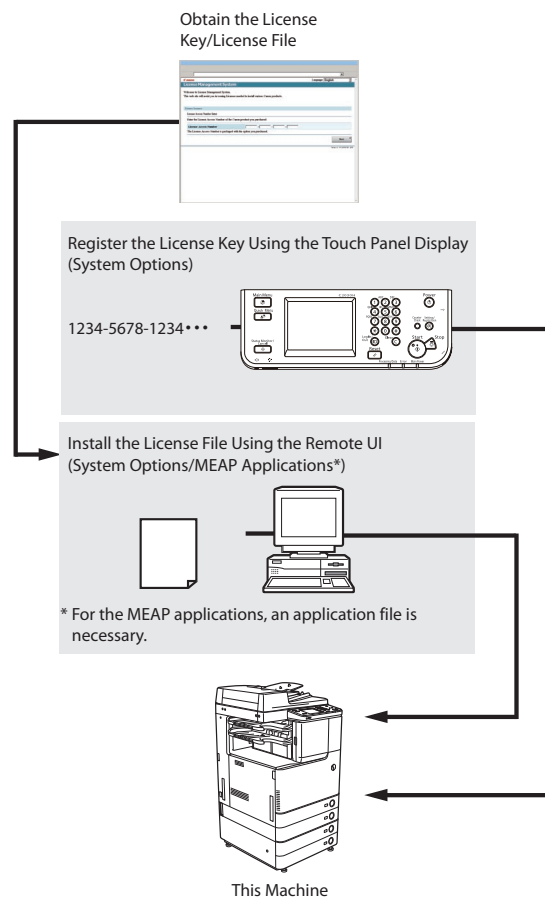
Installing by Connecting This Machine to an Outside Network

You can install the System Options/MEAP Applications by accessing the delivery server from this machine.



Installing by Not Connecting This Machine to an Outside Network

You can install the System Options/MEAP Applications by using the license file/license key that you obtained from the License Management System.



License Registration

License registration may be required, depending on the System Options/MEAP Applications that you are using.

System Options/MEAP Applications

You can enhance the functions of the machine by installing various system options and MEAP applications.

● System Options

The following are the system options you can install on this machine.

- PS Printer Kit
- PCL Printer Kit
- Direct Print Kit (for PDF/XPS)
- Barcode Printing Kit
- Remote Fax Kit
- Color Universal Send Kit*¹
- Universal Send Advanced Feature Set
- Universal Send Security Feature Set
- Universal Send Digital User Signature Kit
- Encrypted Printing Software
- 2.5inch/80GB HDD*¹
- Secure Watermark
- Data Erase Kit
- Web Access Software
- ACCESS MANAGEMENT SYSTEM KIT
- Remote Operator's Software Kit

*¹ If you are using the imageRUNNER ADVANCE C2030H/C2030/C2025H/C2020H, the Color Universal Send Kit and the 2.5inch/80GB HDD are standard-equipped. If you are using the imageRUNNER ADVANCE C2020, depending on the region, the Color Universal Send Kit and the 2.5inch/80GB HDD are standard-equipped.

● MEAP Applications

To enhance the functions of the machine without using the above system options, install the MEAP applications.

NOTE

If you want to perform MEAP applications management, such as the ones shown below, use SMS (Service Management Service). (See e-Manual > MEAP.)

- Checking the MEAP applications installed on this machine
- Checking the amount of memory the MEAP applications are using
- Adding a license to an installed MEAP application

Installing the System Options/MEAP Applications

The procedures to install the system options or MEAP applications on the machine differ, depending on whether the machine is connected or not to an outside network. Select the procedure that matches your conditions using the references below.

NOTE

For instructions on connecting the machine to an outside network, see "Connecting the Machine to a Network," on p. 9.

Installing by Connecting this Machine to an Outside Network

Install using one of the following procedures.

NOTE

To check that the transmission with the delivery server is properly operating, if necessary, perform a transmission test before installation. (See "Testing Communication Using the Touch Panel Display," on p. 61, and "Testing Communication Using the Remote UI," on p. 62.)

Using the touch panel display to install

See "Using the Touch Panel Display to Install (Delivery)," on p. 54.

Using the Remote UI to install

See "Using the Remote UI to Install (Delivery)," on p. 56.

Installing by Not Connecting this Machine to an Outside Network

● Installing System Options

Install using one of the following procedures.

NOTE

If you want to install multiple system options, we recommend using the Remote UI.

Using the touch panel display to install

1. Obtain the license key from the License Management System
See "Obtaining the License Key/License File," on p. 57.
2. Register the license key using the touch panel display
See "Installing the System Options Using the Touch Panel Display," on p. 57.

Using the Remote UI to install

1. Obtain the license file from the License Management System
See "Obtaining the License Key/License File," on p. 57.
2. Install the license file using the Remote UI
See "Installing the System Options Using the Remote UI (Manual)," on p. 58.

● Installing MEAP Applications

Use the following procedure to install.

Using the Remote UI to install

1. Obtain the license file from the License Management System
See "Obtaining the License Key/License File," on p. 57.
2. Install the license file and application file using the Remote UI
See "Installing the MEAP Applications Using the Remote UI (Manual)," on p. 58.
3. Start the MEAP applications from SMS
See "Starting the MEAP Applications," on p. 59.

Installing by Connecting This Machine to an Outside Network

If the machine is connected to an outside network, you can install the system options and MEAP applications by linking with the delivery server.

NOTE

Make sure that the license access number that is included with the package is available.

Using the Touch Panel Display to Install (Delivery)


You can install the system options or MEAP applications to the machine using the touch panel display.

IMPORTANT

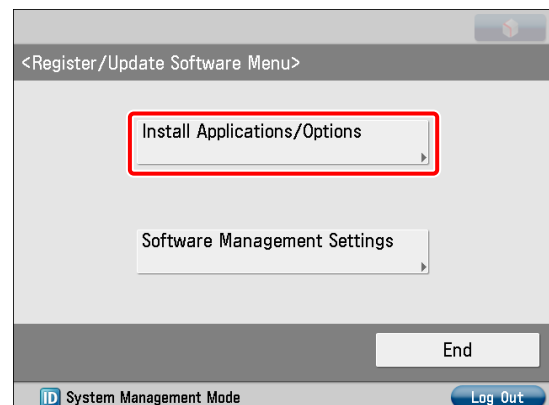
To perform the procedures described in this section, you must log in to the machine as an administrator. (See "Logging In from the Touch Panel Display," on p. 8.)

NOTE

- The maximum number of MEAP applications that can be installed is 19.
- The maximum amount of memory allocated to install MEAP applications is 1GB. (If you are using the imageRUNNER ADVANCE C2020, this value may vary depending on the region.)
- There may be other system requirements for installation, depending on the MEAP applications. For instructions on settings, see the manual provided with the MEAP application.

1 Press  (Settings/Registration) → [Management Settings] → [License/Other] → [Register/Update Software].

2 Press [Install Applications/Options].



3 Press [License Access Number].

<Install Applications/Options>

License Access Number

4 digits at a time.

◀ Back to Menu Start

ID System Management Mode Log Out

4 Enter the license access number four digits at a time.

License Access Number (4 digits at a time.) (1/4)

Backspace Alphanum.

q w e r t y u i o p -

a s d f g h j k l

@ z x c v b n m , . /

Shift Space

Cancel OK

ID System Management Mode Log Out

Enter four digits of the license access number → press [OK]. Repeat this step four times to enter a total of 16 digits for the license access number.

5 Press [Start].

<Install Applications/Options>

License Access Number

1234 5678 1234 5678

4 digits at a time.

◀ Back to Menu Start

ID System Management Mode Log Out

6 Select the system options and MEAP applications → press [Install].

<Install Applications/Options: Confirm>

Product Type: Independent

Application/Option	Version	Memory (KB)	Size (KB)
Sample_1	1.0		

Available: 1018607 KB Do Not Start

Cancel Install

ID System Management Mode Log Out

[Do Not Start]: Press to only install the MEAP application and not start the application.

IMPORTANT

If [Do Not Start] is selected when installing MEAP applications, you must start the application before using the MEAP application. (See "Starting the MEAP Applications," on p. 59.)

NOTE

You can select multiple system options and MEAP applications, but you cannot select the same product with different version at the same time.

If the agreement screen is displayed, read the agreement. If you abide with the agreement, press [Accept].

7 Check the Installation Result screen.

<Install Applications/Options: Exit>

Application/Option	Installation Result	Start Status
Sample_1	Succeeded	Start

Manual: <http://canon.com/fau/downloads>

OK

ID System Management Mode Log Out

When the installation of the system options is completed, the message <Enabled After Restart> appears on the Installation Result screen. Restart the machine to enable the function.

NOTE

You can download the manuals for the installed system options/MEAP applications from your computer by accessing the URL for the manual download site displayed on the Installation Result screen. (See "Downloading the Manuals and Related Software," on p. 60.)

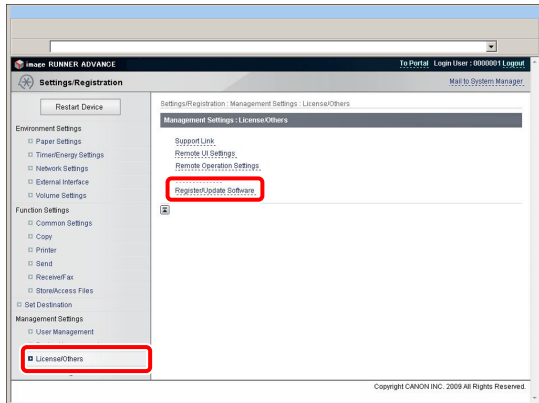
Using the Remote UI to Install (Delivery)

You can install the system options or MEAP applications to the machine using the Remote UI.

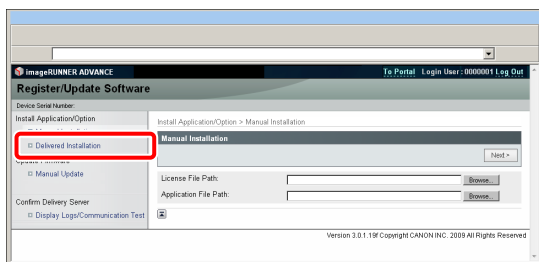
IMPORTANT

To perform the procedures described in this section, you must log in to the machine as an administrator. (See "Logging In Using the Remote UI," on p. 8.)

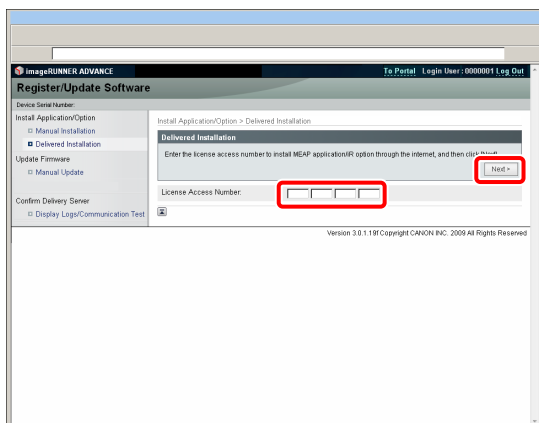
- From the top page of the Remote UI, click [Settings/Registration] → [License/Others] → [Register/Update Software].



- Click [Delivered Installation].



- Enter the license access number → click [Next].

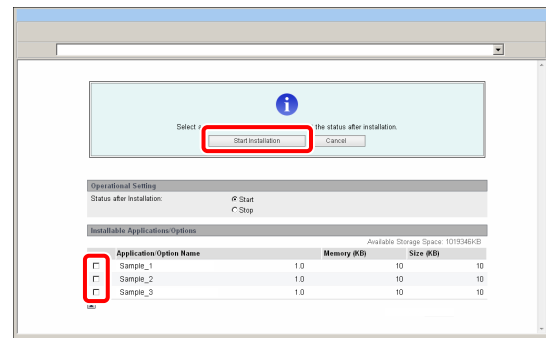


Once the license access number is confirmed after contacting the delivery server, information for the system options/MEAP applications you can install are displayed.

NOTE

If the license access number is incorrect, an error page is displayed.

- Select the system options and MEAP applications → click [Start Installation].



Status after Installation:

Start: Starts the installed MEAP applications.

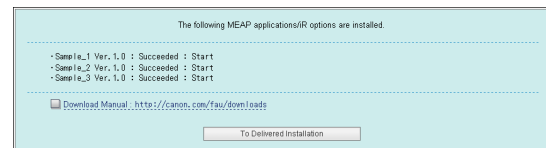
Stop: Stops the installed MEAP applications.

IMPORTANT

If [Stop] is selected when installing MEAP applications, you must start the application before using the MEAP application. (See "Starting the MEAP Applications," on p. 59.)

If the agreement screen is displayed, read the agreement. If you abide with the agreement, click [Accept].

- Check the Installation Result screen.



When the installation of the system options is completed, the message <Restart the device.> appears. Restart the machine to enable the function.

To return to the Delivered Installation screen, click [To Delivered Installation].

NOTE

You can download the manual for the installed system options/MEAP applications by accessing the URL for the manual download site displayed on the Installation Result screen. (See "Downloading the Manuals and Related Software," on p. 60.)

Installing by Not Connecting This Machine to an Outside Network

This section describes how to install the system options and MEAP applications without connecting the machine to an outside network.

Obtaining the License Key/License File

Obtain the license key or license file.

● License key:

Obtain the license key when installing the system options using the touch panel display.

● License file:

Obtain the license file when installing the system options/MEAP applications using the Remote UI.



NOTE

- Make sure that the license access number that is included with the package is available.
- If the license access number is not printed on the package of the MEAP application you are using, the license file is issued by the distributor of the MEAP application. You do not need to obtain the license key/license file explained in this section. For more information, see the manual for each MEAP application.

1 Check the management number you need to obtain the license key or the license file.

To obtain the license key or the license file, the following management number is required.

- License Access Number: Check the license access number certificate.
- Device Serial Number: Check and note the serial number which is displayed at the bottom left of the screen when you press [Counter Check] on the machine.

2 Access <http://www.canon.com/lms/license/>.

3 Follow the instructions on the screen and obtain the license key/license file.

If the license key is obtained, see "Installing the System Options Using the Touch Panel Display," on p. 57.

If the license file is obtained, see "Installing the System Options Using the Remote UI (Manual)," on p. 58 or "Installing the MEAP Applications Using the Remote UI (Manual)," on p. 58.

Installing the System Options Using the Touch Panel Display

You can install the system options to the machine by registering the license key using the touch panel display.

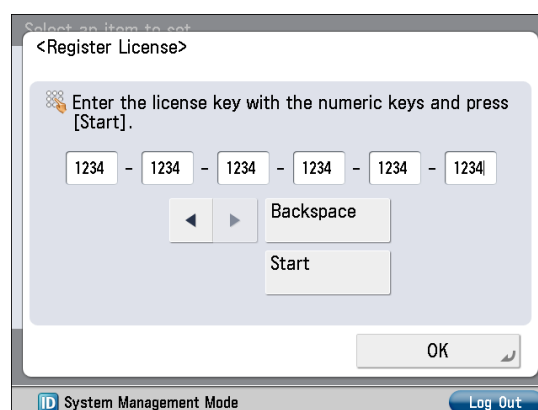


IMPORTANT

To perform the procedures described in this section, you must log in to the machine as an administrator. (See "Logging In from the Touch Panel Display," on p. 8.)

1 Press (Settings/Registration) → [Management Settings] → [License/Other] → [Register License].

2 Enter the license key using - (numeric keys).



Details of each item are shown below.

: Press to move the cursor.

[Backspace]: Press when you entered a wrong number. The number in front of the cursor is deleted and you can reenter the correct number.

If the message <The value for the license key is not correct. Check the license key.> is displayed, press [OK] → enter the correct license key.

If the message <The feature required for installation is not present.> is displayed, you cannot register the license key. Press [OK] → cancel the registration.

3 Press [Start] → [OK].

The registered functions can be used only after you restart the machine.

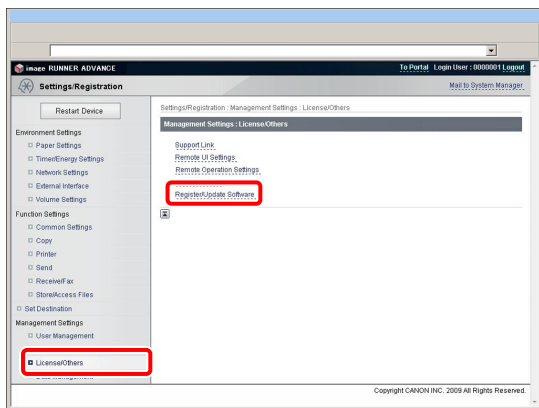
Installing the System Options Using the Remote UI (Manual)

You can install the system options to the machine using the Remote UI.

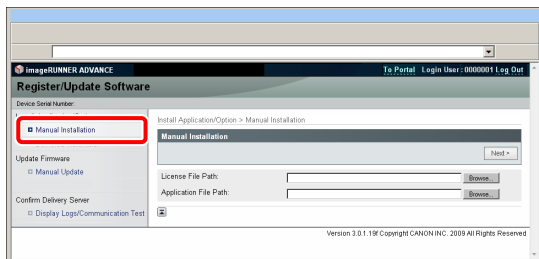
IMPORTANT

To perform the procedures described in this section, you must log in to the machine as an administrator. (See "Settings Required to Use the Remote UI," on p. 15.)

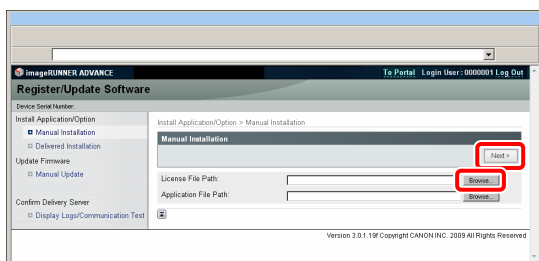
- 1 From the top page of the Remote UI, click [Settings/Registration] → [License/Others] → [Register/Update Software].



- 2 Click [Manual Installation].



- 3 Click [Browse] → select the license file to install → click [Next].



File extensions:
License File: A file with the 'lic' extension.

NOTE

- You do not have to use Application File Path.
- You can also specify the file path by entering it directly.

- 4 Check the contents that will be installed on the confirmation screen → click [Install].

Installing the MEAP Applications Using the Remote UI (Manual)

You can install the MEAP applications to the machine using the Remote UI.

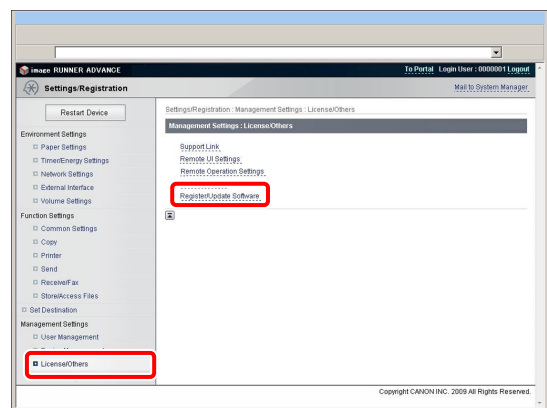
IMPORTANT

To perform the procedures described in this section, you must log in to the machine as an administrator. (See "Settings Required to Use the Remote UI," on p. 15.)

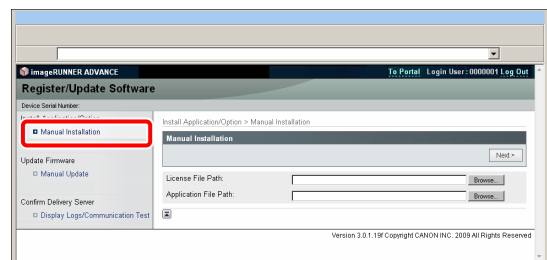
NOTE

- The maximum number of MEAP applications that can be installed is 19.
- The maximum amount of memory allocated to install MEAP applications is 1GB. (If you are using the imageRUNNER ADVANCE C2020, this value may vary depending on the region.)
- There may be other system requirements for installation, depending on the MEAP applications. For instructions on settings, see the manual provided with the MEAP application.

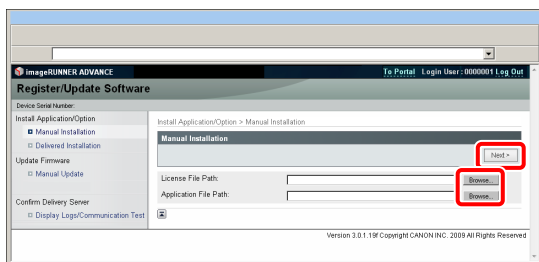
- 1 From the top page of the Remote UI, click [Settings/Registration] → [License/Others] → [Register/Update Software].



- 2 Click [Manual Installation].



- Click [Browse] → select the license file and the application file to install → click [Next].



File extensions:
License File: A file with the 'lic' extension.
Application File: A file with the 'jar' extension.

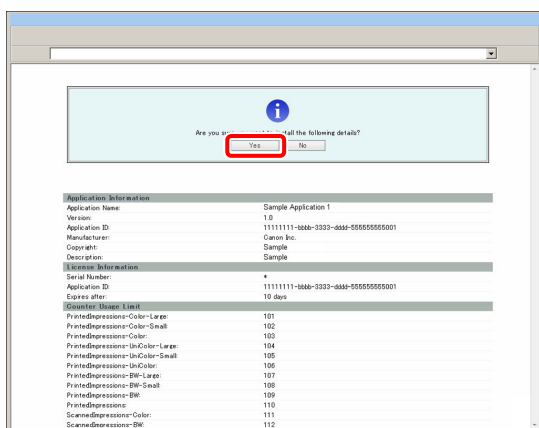
IMPORTANT

- You cannot install license files only.
- When installing the MEAP application, make sure you specify the license file. You cannot install the MEAP application without specifying the license file.

NOTE

You can also specify the file path by entering it directly.

- Confirm the information displayed on the install confirmation page → click [Yes].



Depending on the MEAP application, a software license agreement screen may be displayed. Confirm the information displayed on the screen → click [OK].
If you are installing a new MEAP application, the following information is displayed on the screen.

- Application Information
- License Information
- Current Application Information

The following information is displayed when you overwrite a MEAP application.

- Application Information after Overwrite
- Installation will start after the message <Installing... Please wait.> is displayed again. After the installation, click [To Manual Installation] to display the Manual Installation screen.

IMPORTANT

To use the installed MEAP application, you must start the MEAP application. (See "Starting the MEAP Applications," on p. 59.)

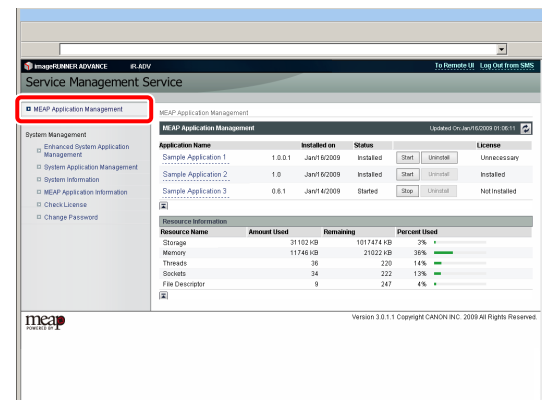
Starting the MEAP Applications

This section describes how to start the installed MEAP application from the SMS screen.

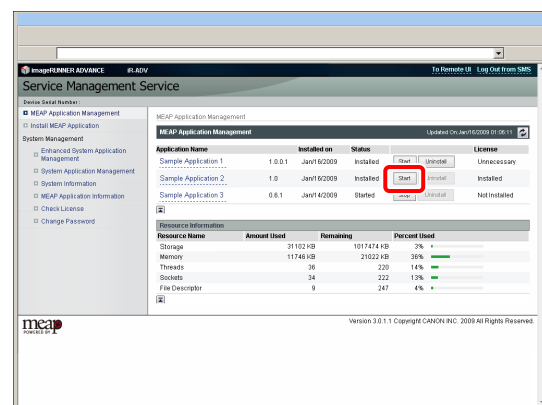
NOTE

For more information on SMS, see e-Manual > MEAP.

- From the top page of the SMS, click [MEAP Application Management].



- Click [Start] for the application to start.



Downloading the Manuals and Related Software

You can download the manuals for the installed system options/MEAP applications and their related software from the following URL.
<http://canon.com/fau/downloads>

NOTE

- Make sure that the license access number that is included with the package is available.
- If you cannot find a manual to download, see the function descriptions in the e-Manual included with this machine.
- If you installed from the Remote UI, you can jump to the above URL from the link displayed on the Installation Result screen. If you do so, the license access number is entered automatically.

1 Start the Web browser on your computer.

2 Enter the URL in [Address].

3 After entering the license access number, follow the instructions on the screen to download the manuals and related software.

If software is downloaded, refer to the manual of that software to install.

Managing by Using the Touch Panel Display

You can display the installation logs and test communication using the touch panel display.




IMPORTANT

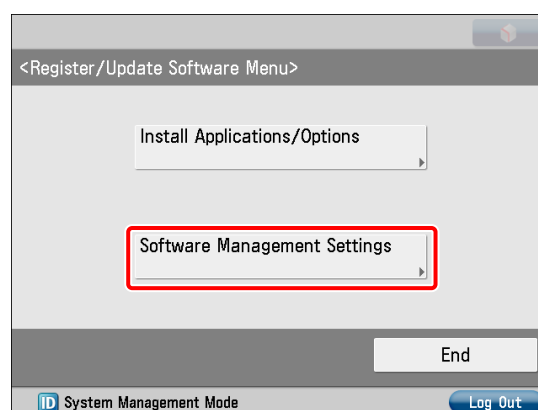
To perform the procedures described in this section, you must log in to the machine as an administrator. (See "Logging In from the Touch Panel Display," on p. 8.)

Displaying the Installation Log Using the Touch Panel Display

You can check the installation logs of the system options and MEAP applications.

1 Press  (Settings/Registration) → [Management Settings] → [License/Other] → [Register/Update Software].

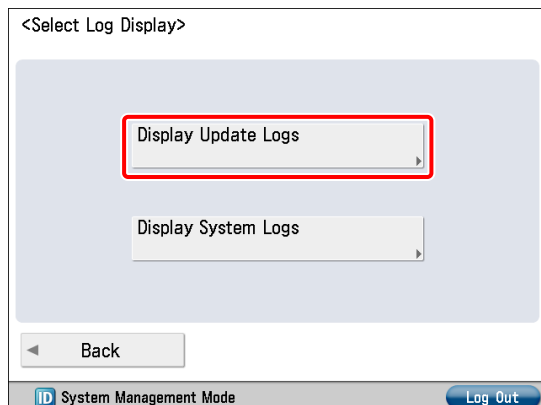
2 Press [Software Management Settings].



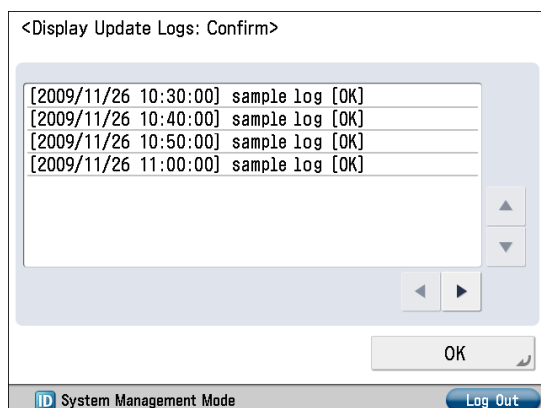
3 Press [Select Log Display].



4 Press [Display Update Logs].



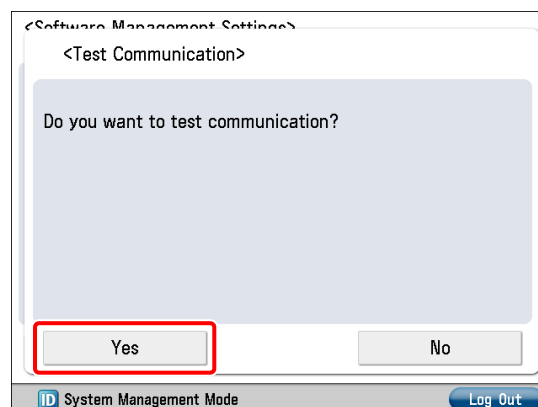
The installation logs of the system options and MEAP applications are displayed.



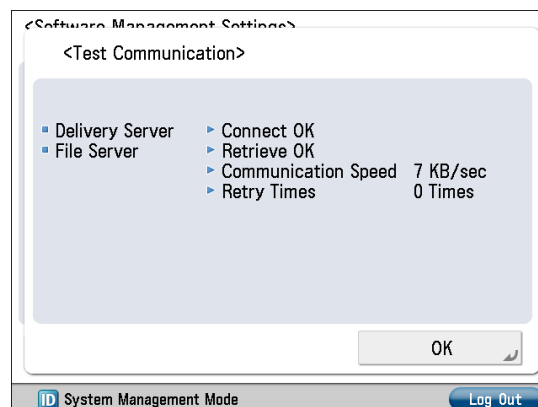
3 Press [Test Communication].



4 Press [Yes].



Contents for the test are downloaded from the delivery server. When the communication test is completed, the Test Communication screen is displayed.




NOTE

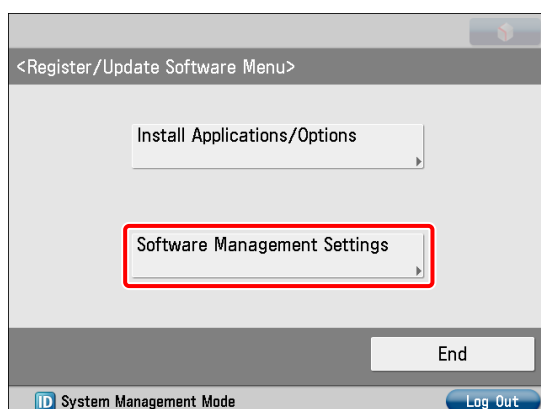
If 'Failed' is displayed on the Test Communication screen, check that the network cable is connected and that the network settings are correct. If the problem is not resolved, contact your local authorized Canon dealer.

Testing Communication Using the Touch Panel Display

You can check whether the machine can properly communicate with the delivery server.

1 Press  (Settings/Registration) → [Management Settings] → [License/Other] → [Register/Update Software].

2 Press [Software Management Settings].



Managing by Using the Remote UI

You can display the installation logs and test communication using the Remote UI.



IMPORTANT

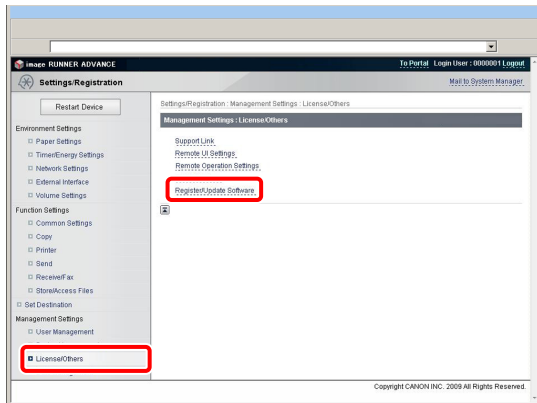
To perform the procedures described in this section, you must log in to the machine as an administrator. (See "Settings Required to Use the Remote UI," on p. 15.)

Displaying the Installation Log Using the Remote UI

You can check the installation logs of the system options and MEAP applications.

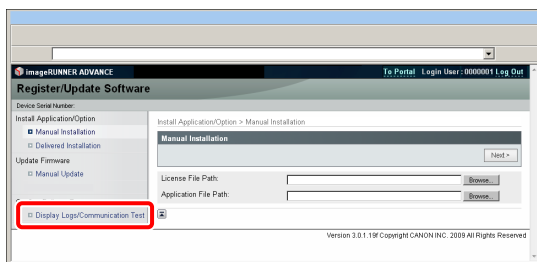
1

From the top page of the Remote UI, click [Settings/Registration] → [License/Others] → [Register/Update Software].



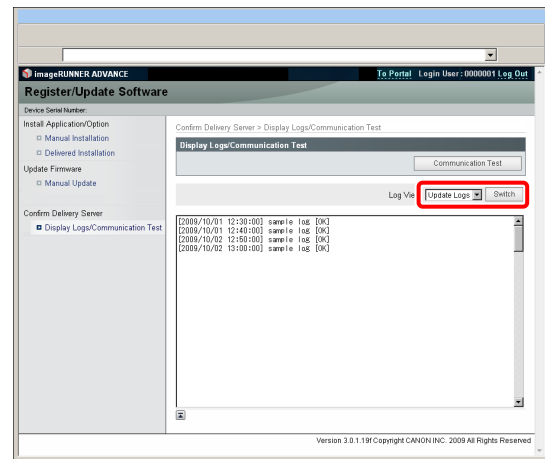
2

Click [Display Logs /Communication Test].



3

From the Log View drop-down list, select [Update Logs] → click [Switch].



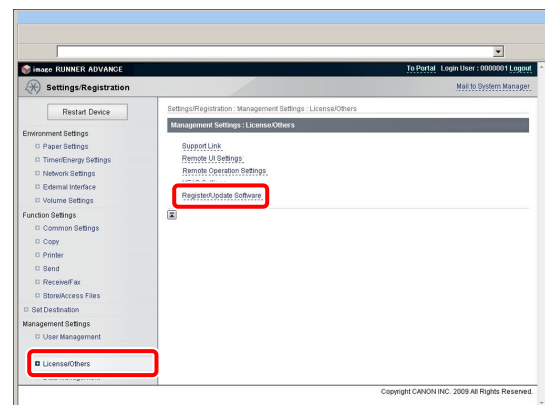
The installation logs of the system options and MEAP applications are displayed.

Testing Communication Using the Remote UI

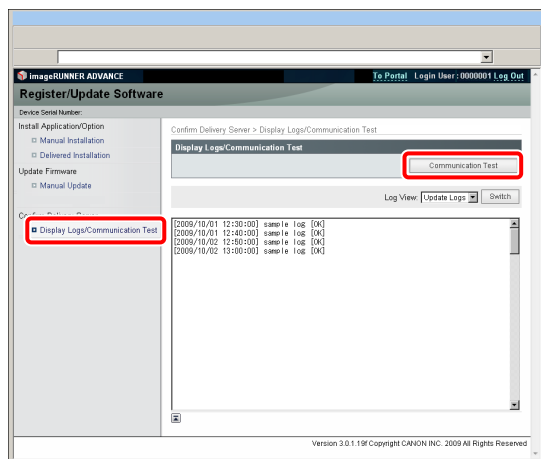
You can check whether the machine can properly communicate with the delivery server.

1

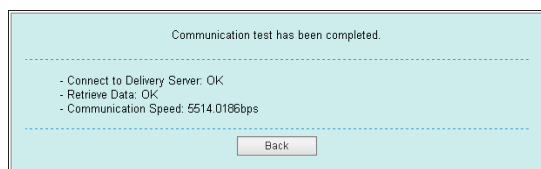
From the top page of the Remote UI, click [Settings/Registration] → [License/Others] → [Register/Update Software].



2 Click [Display Logs /Communication Test] → [Communication Test].



When the confirmation dialog is displayed, click [Yes].
Contents for the test are downloaded from the delivery server.
When the communication test is completed, the communication test result screen is displayed.



NOTE

If 'Failed' is displayed on the communication test result screen, check that the network cable is connected and that the network settings are correct. If the problem is not resolved, contact your local authorized Canon dealer.

Updating the Firmware

This section describes how to update firmware.

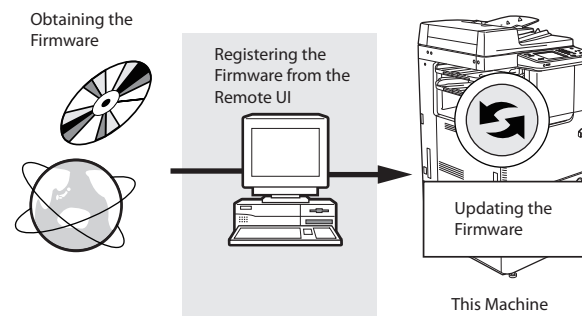
Updating Firmware

Using the Register/Update Software function, you can update the firmware of the machine to the most recent version.

NOTE

- For information on the log in service, see e-Manual > MEAP. If the authentication function is not set, the Log In screen is not displayed.
- For information on necessary system environment and preparation to start the Remote UI, see e-Manual > Remote UI.
- Multiple users cannot use the Register/Update Software function at the same time.
- If another user is logged in to SMS (Service Management Service), you cannot use the Register/Update Software function from the Remote UI.
- If the following procedure is performed, you cannot use the Register/Update Software function from the Remote UI for a specified time:
 - When Remote Login Service of the SMS is set and the Web browser was closed without pressing [Portal] or [Log Out]
 - When Remote Login Service of the SMS is not set and the Web browser was closed without pressing [Portal]
 - When the Web browser was closed without pressing [Log Out from SMS], [To Remote UI], or [Log out] of the SMS
- For more information on SMS, see e-Manual > MEAP.

You can update the firmware using the data that is distributed separately from the machine.



Updating Using the Remote UI (Manual)

You can update the firmware from the Remote UI that is connected to the machine.

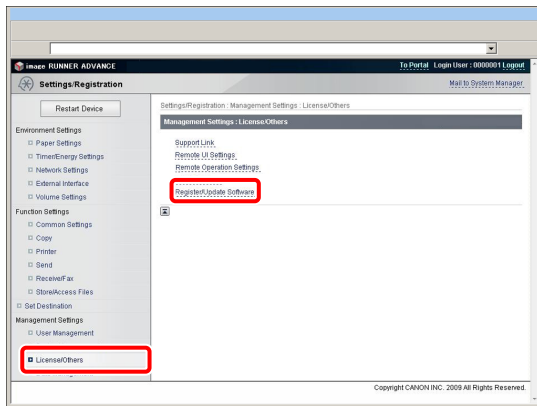
IMPORTANT

To perform the procedures described in this section, you must log in to the machine as an administrator. (See "Logging In Using the Remote UI," on p. 8.)

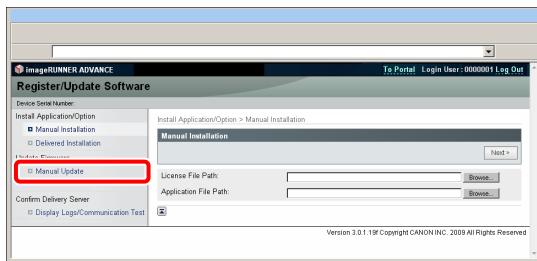
NOTE

To perform the procedures described in this section, the data of the firmware that is distributed separately from the machine is necessary.

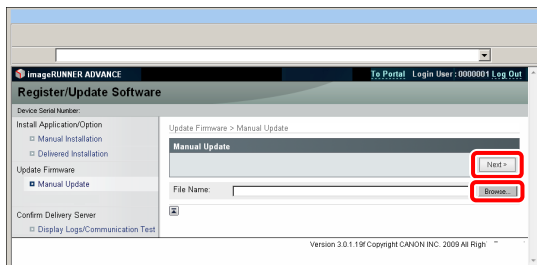
- 1 From the top page of the Remote UI, click [Settings/Registration] → [License/Others] → [Register/Update Software].



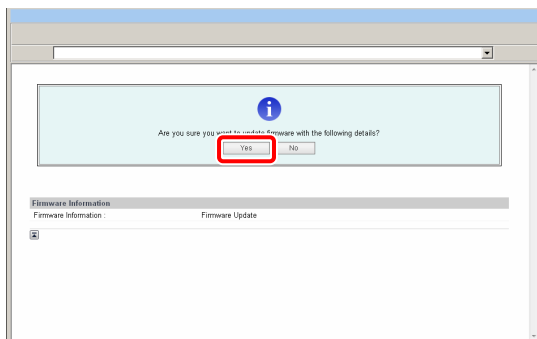
- 2 Click [Manual Update].



- 3 Click [Browse] → select the firmware to update → click [Next].



- 4 Check the contents that will be updated on the confirmation screen → click [Yes].



The new firmware is now applied to the machine.
When the message <The firmware is updated. Restart the device.> appears, restart the machine.



CANON INC.

30-2, Shimomaruko 3-chome, Ohta-ku, Tokyo 146-8501, Japan

CANON U.S.A., INC.

One Canon Plaza, Lake Success, NY 11042, U.S.A.

CANON CANADA INC.

6390 Dixie Road Mississauga, Ontario L5T 1P7, Canada

CANON EUROPA N.V.

Bovenkerkerweg 59-61 1185 XB Amstelveen, The Netherlands

(See <http://www.canon-europe.com/> for details on your regional dealer)

CANON LATIN AMERICA, INC.

703 Waterford Way Suite 400 Miami, Florida 33126 U.S.A.

CANON AUSTRALIA PTY. LTD

1 Thomas Holt Drive, North Ryde, Sydney, N.S.W. 2113, Australia

CANON CHINA CO., LTD

15F Jinbao Building No.89 Jinbao Street, Dongcheng District, Beijing 100005, China

CANON SINGAPORE PTE. LTD.

1 HarbourFront Avenue #04-01 Keppel Bay Tower, Singapore 098632

CANON HONGKONG CO., LTD

19/F., The Metropolis Tower, 10 Metropolis Drive, Hunghom, Kowloon, Hong Kong