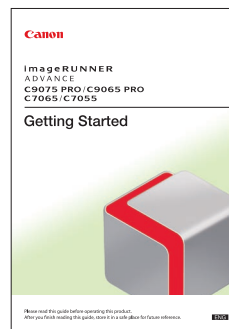


## Getting Started

### Where do I start?

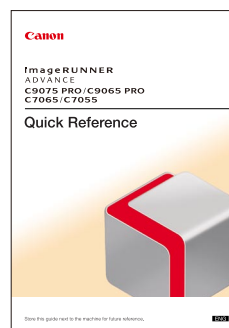
- Explains how to specify settings after the machine is installed.
  - Settings Common to the Network Protocols
  - Before Using the Fax Function
  - Before Printing from Computers
  - Specifications of the machine and optional equipment, etc.



## Quick Reference

### What can I do with this machine?

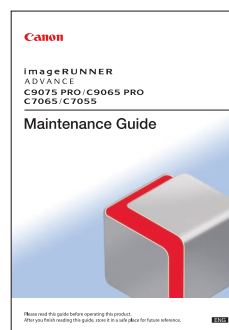
- Explains the basic operations and convenient ways to use the machine.
  - The Control Panel
  - How to Make a Copy
  - Sending Fax, etc.



## Maintenance Guide

### How do I load paper or replace the toner?

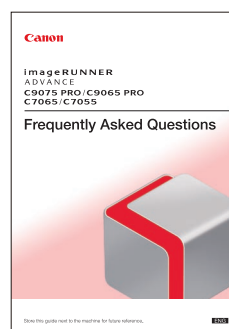
- Explains the routine maintenance for the machine and how to solve problems, such as paper jams.
  - Loading Paper
  - Replacing the Toner Cartridge
  - Clearing Paper Jams, etc.



## Frequently Asked Questions

### How do I make these settings? Troubleshooting?

- Answers to frequently asked questions.
  - I want to make copies, but cannot because printing is in progress.
  - How do I change the settings for the printer driver?
  - I cannot remove the toner cartridge, etc.



\* The above manuals are printed, but they are also included in the e-Manual as PDF files.



# How to Use the Manuals

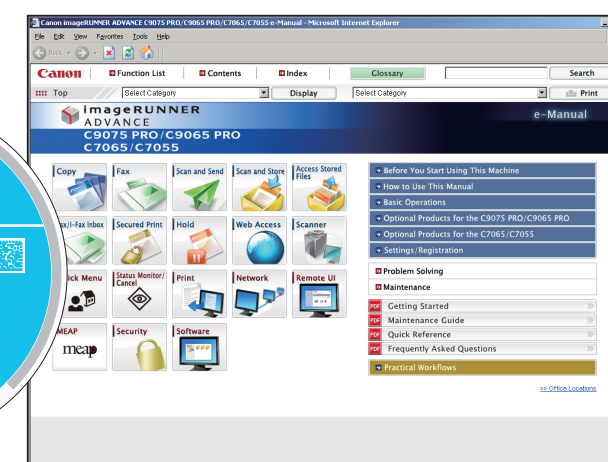
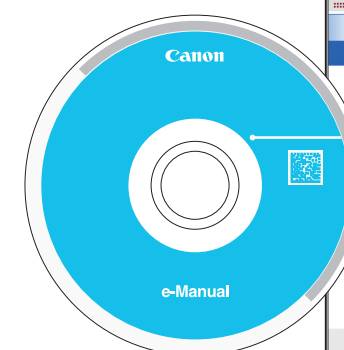
Introduction to the manuals included with this machine.

There are both hard copy and electronic manuals that can be accessed from your computer to support you in various ways.

## e-Manual

Information to master this machine is consolidated into this one CD-ROM.

- Explains how to use functions, such as Copy and Send, how to specify settings, and introduces optional equipment that can enhance job productivity.
- Includes sample operations, which help you to perform procedures, such as making copies into a booklet or preventing unauthorized copying.

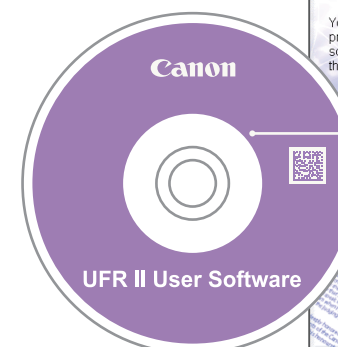


For more information, see the other side.

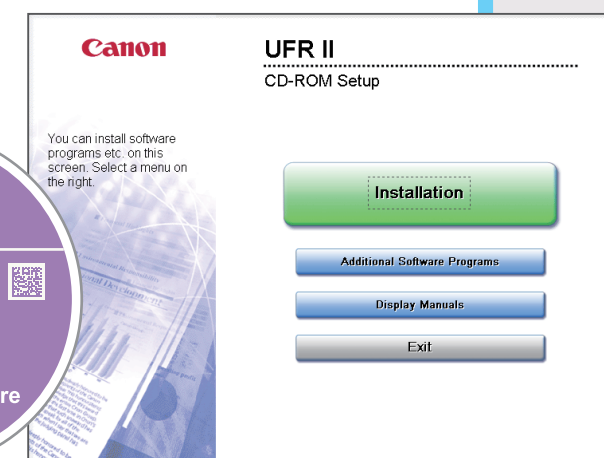
## Printer Driver Installation Guide

### How do I install the printer driver?

- Explains how to install the necessary drivers to print from your personal computer or send a fax.



- UFR II
- PCL
- PS
- FAX

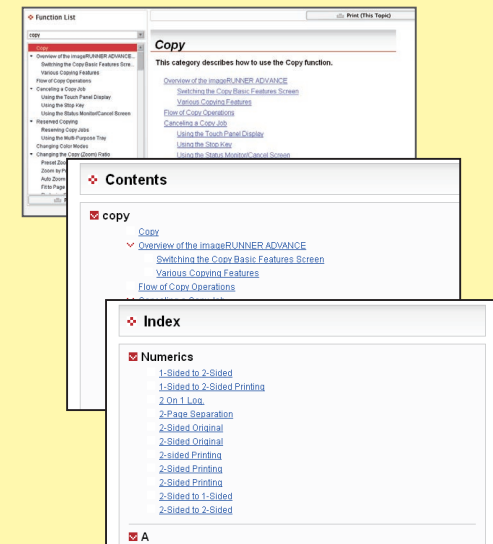


# Search Using the e-Manual

Information for using this machine is included, except for some optional equipment.

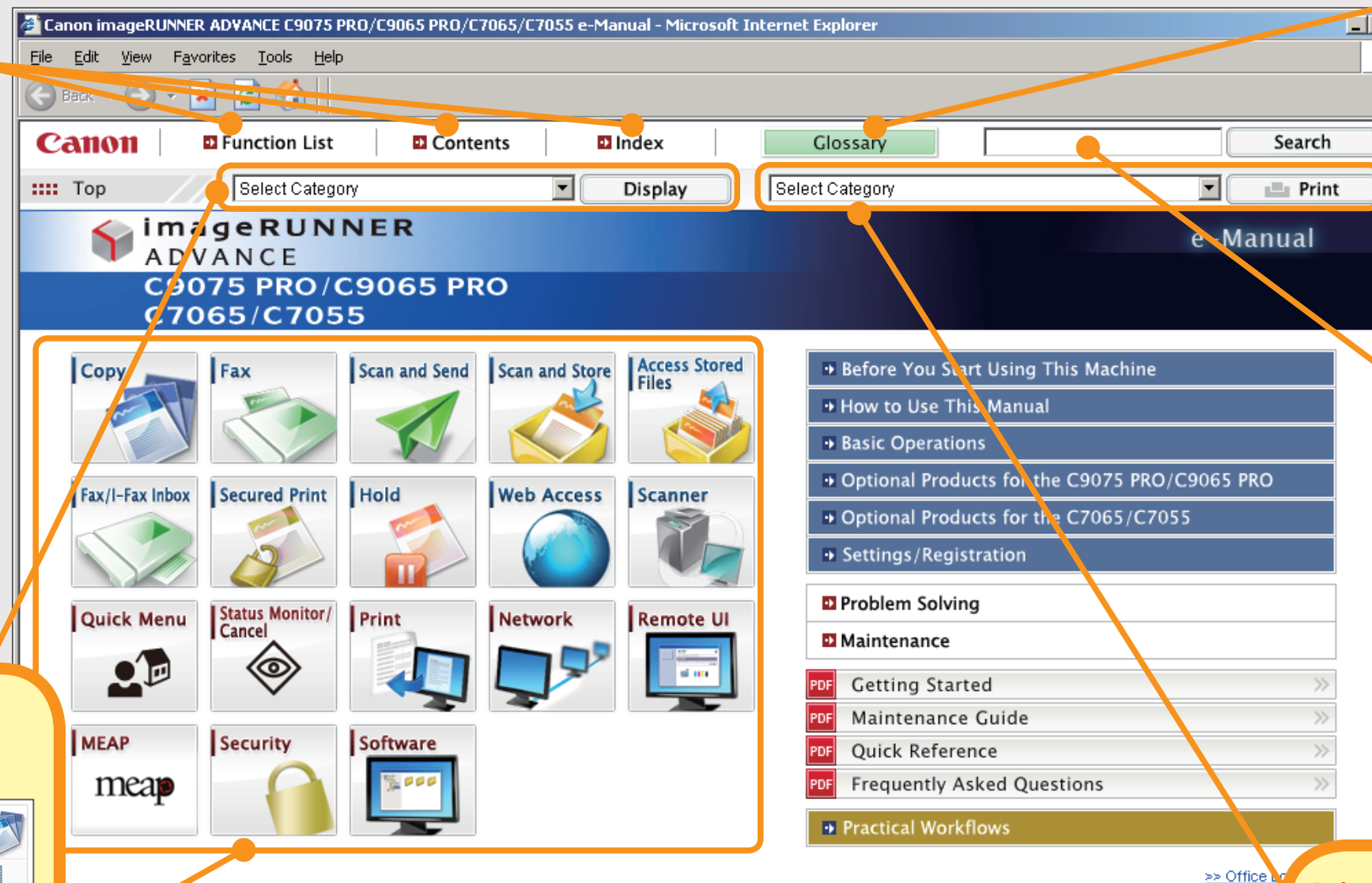
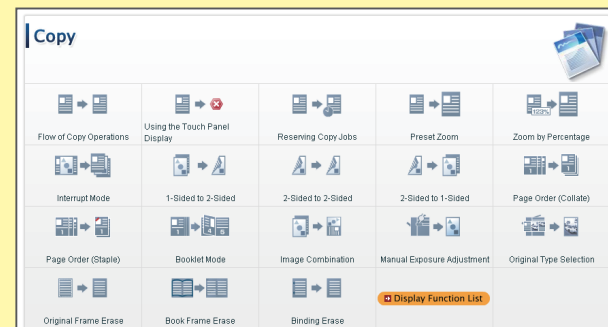
## Search from the Function List, Contents, and Index

You can search for items using various methods.



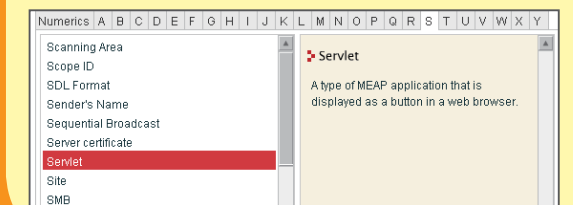
## Search from the Icon Image

You can find the items you are looking for from the animated function icon.



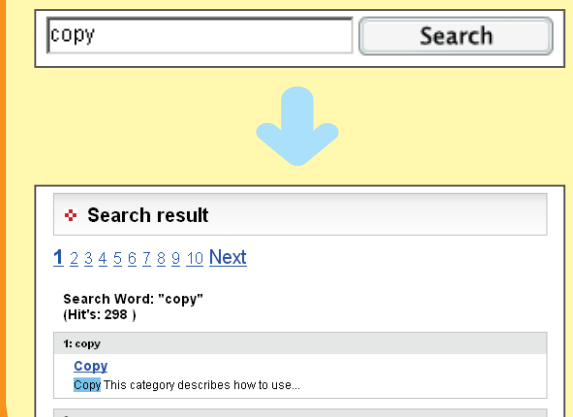
## Search for a Term

You can search for a definition of an unfamiliar term.



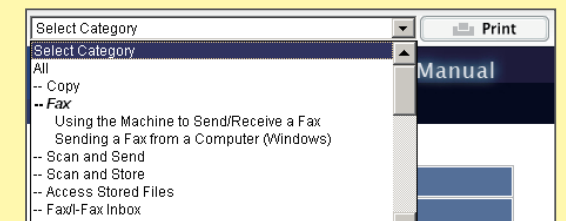
## Search with a Keyword

From a large amount of information, you can quickly search for information that include the keyword.



## Print the e-Manual

You can print a specific page, a single category, or all categories.



## System Requirements

■ OS
Windows 2000 SP4, Windows XP, Windows Vista, Windows Server 2008, Windows 7 (Even if you are using Windows 2000 SP4, Internet Explorer 6.0 or later is required.)
Mac OS X v10.4.x
■ Web Browser
Windows: Internet Explorer 6.0, 7.0 or 8.0
Mac: Safari 2.0.x
■ Flash Player
Flash Player 8.0 or later
■ Display Resolution
1024 x 768 pixels or higher

## Install the e-Manual for Windows

- 1 Insert the e-Manual CD-ROM in your computer.
- 2 Select the language for the e-Manual.
- 3 Select [Install] or [Display Manual].

If [Install] is selected:

The e-Manual is saved in the [My Documents] folder on your computer. If the shortcut icon created on the Desktop or if the [index.html] file is double-clicked, the e-Manual is displayed.

If [Display Manual] is selected:

The e-Manual is displayed.

## Install the e-Manual for Macintosh

- 1 Insert the e-Manual CD-ROM in your computer.
- 2 Double-click the [e-Manual] icon → drag-and-drop the [iRADV\_C9075\_PRO\_Manual\_eng] folder to the location where you want to save it.
- 3 Double-click [index.html] in the [iRADV\_C9075\_PRO\_Manual\_eng] folder, and the e-Manual is displayed.



NOTE

Depending on the operating system you are using, a security protection message may be displayed. In this case, allow the contents to be displayed.