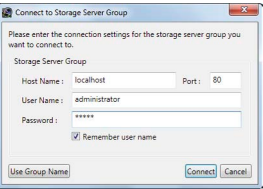


This guide describes the basic operation of RM Viewer. For a more detailed description of the operation, see the “Administrator’s Manual” on the supplied CD-ROM.

Starting/Exiting the Viewer

- 1 Double-click the [RM Viewer] icon on the desktop.  
✕ The RM-Lite icon has a different appearance.

2



Enter the [Host Name], [User Name] and [Password] and click [Connect].  
The Viewer starts.  
Record the user name and password here:

User name	
Password	

Note If you record your user name and password here, be sure to handle this document carefully, so as not to reveal them to an unauthorized person.

- 3 Select [File] > [Exit].  
The Viewer exits.

Searching

Searching for a Camera and Viewing Images

Search for a camera to view using various search criteria.

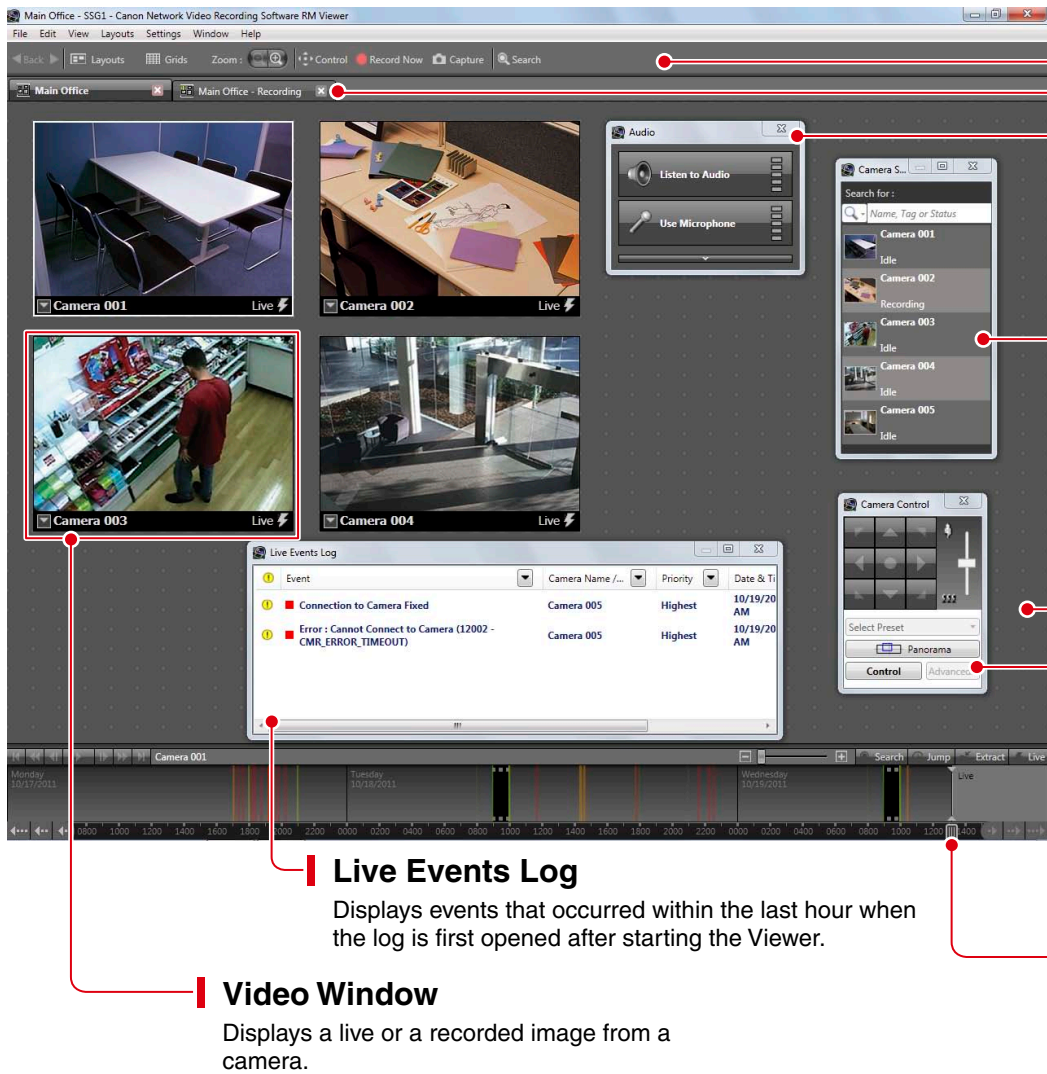
- 1 Click the search button (🔍) on the Camera Selector and select the type of search criteria.
- 2 Type the search criteria to search for the camera.
- 3 Double-click a camera in the search results list to open a video window for the camera.

Selecting an Event and Viewing the Image

You can search for events and play back images from an event in the search results.

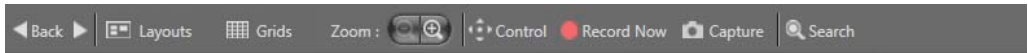
- 1 Click [Search] on the Toolbar to display the [Event Search] dialog box.
- 2 Specify the search criteria and click [Search] to start searching.
- 3 Select the event you want to view and click [Play Back Video].

Viewer Features



- Toolbar**  
The toolbar has buttons for accessing commonly used functions.
- Tabs**  
Tabs allow different layouts to be open at the same time for quick access. (RM-Lite does not support the tabs function.)
- Audio Panel**  
Lets you send/receive live audio for a camera or play back recorded audio.
- Camera Selector**  
Displays a list of cameras. Select the camera you want to view from the list. [Search for:] searches for cameras in the list that meet the search criteria, such as the camera name or tag.
- Viewing Area**  
Place and arrange video windows in this area.
- Camera Control**  
Controls the settings on the camera. See “Controlling a Camera” on the other side of this guide.
- Timeline**  
Displays recording information and past events.
- Playhead**  
Points to the time code being played. Drag the playhead to change the time code of the image in the video window.

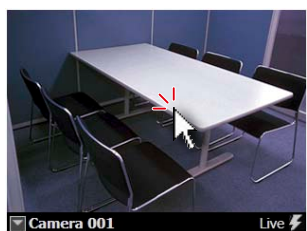
Toolbar buttons



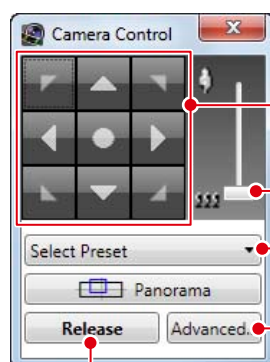
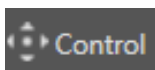
- [Back]**  
Click ◀ to return to the previously displayed layout. Click ▶ to display the next layout.
- [Layouts]**  
Selects and switches to a different video window layout.
- [Grids]**  
Displays a grid in the background of the viewing area.
- [Zoom]**  
Zooms in and out of the viewing area.
- [Control]**  
Displays the Camera Control dialog box, used for controlling a camera.
- [Record Now]**  
Starts recording images.
- [Capture]**  
Captures a still frame of the displayed image. The still frame can be saved.
- [Search]**  
Searches for events. Images can be played back from an event in the search results.

## ■Controlling a Camera

- 1 Click the video window of the camera you want to control.



- 2 Click [Control] on the toolbar to display the [Camera Control] dialog box.



### Pan (Right/Left) / Tilt (Up/Down)

Use the arrow buttons to pan or tilt a camera that has the pan/tilt feature.

### Zoom

Drag the slider to change the zoom.

### Select Preset

Select from a list of camera angles that you preset on the camera.

### Advanced

Adjust the camera image quality using the exposure or smart shade control.

### Control/Release

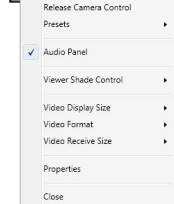
All buttons on the [Camera Control] dialog box become active.

## Control the Camera Directly Using the Live Image

Center the image at a point by clicking the [+] cursor there



Zoom the image in/out with the slider



Click [Audio Panel] to display a menu.

- To change the size of the video window, change [Video Display Size].
- To make dark areas of the image lighter, adjust the level of [Viewer Shade Control].



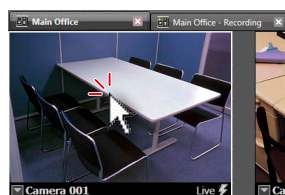
Note

- The [Cannot get camera control] message is displayed when another Viewer with higher camera control privileges is controlling the camera. Please contact your administrator.
- Depending on the type of camera, some functions might not be available. For details, see the "Administrator's Manual".
- Ask your administrator in advance about how to operate a camera while it is recording.

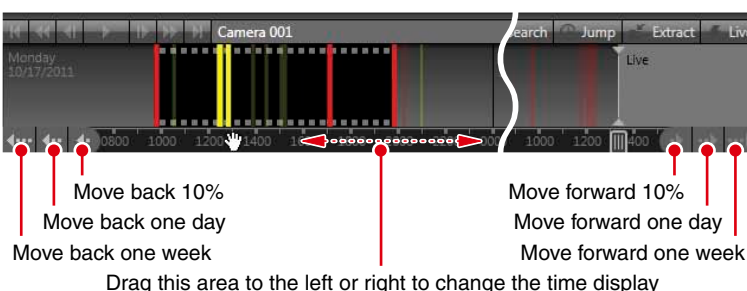
## ■Playing Back Recordings

### Playback Using the Timeline

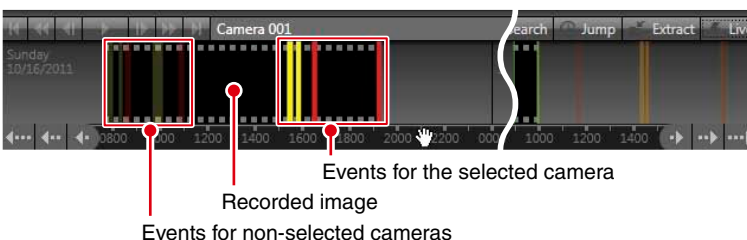
- 1 Click the video window of the camera you want to use for playback.



- 2 Drag to move the time display on the timeline.



- 3 Click the time or event that you want to play back. Playback starts in the video window.



## Controlling/Saving the Playback Image

### Controlling the Playback Image



For Rewind and Fast Forward, the speed changes in steps: 2x → 5x → 10x.

### Zooming In/Out on the Timeline



Zoom in on the timeline to display more detail and zoom out to display the entire timeline.



Note

Rewind and Previous Frame cannot be used with MPEG-4 and H.264 playback. \*RM-Lite does not support MPEG-4 or H.264 recording.

### Playback from a Specified Time

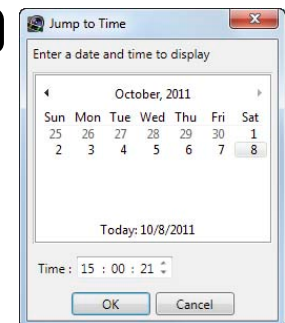
- 1 Click the video window of the camera you want to use for playback.



- 2 Click [Jump] to display the [Jump to Time] dialog box.



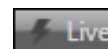
- 3 Select a date and time, and click [OK]. Playback starts in the video window.



Hint

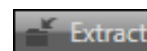
- Use Playback Using the Timeline to start playback at any point, such as at events. Use Playback from a Specified Time to start playback at a specific time.
- You can play back images from multiple cameras simultaneously, or play back images recorded at different times with the same camera.

### Returning to the Live Image



Switch from the recorded image to the live image.

### Saving a Specific Image (to External Media)



Saves a specific recorded image in Quicktime format (\*.mov) to a desired location. The length of the saved image can be up to one hour.