

This document only contains descriptions of the basic features and operations. For further information on this machine, see the e-Manual.

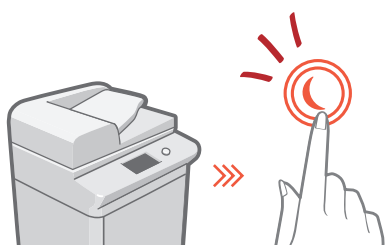
Store this guide in a safe place for future reference.


Learning How to Use Your Machine	2
Tips for Copying	4
Tips for Printing	6
Tips for Faxing	8
Tips for Scanning	10
Tips for Registering Destinations	12

Learning How to Use Your Machine

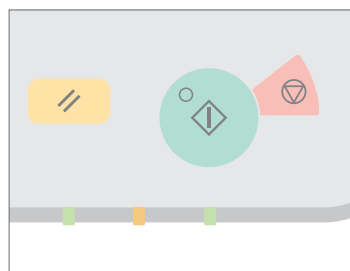
This section contains a brief overview of the basic operations of your machine.




Turning On the Display



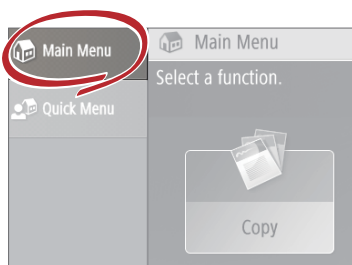
When the display is turned off, press the  button on the control panel to exit the Sleep mode and turn it back on.


The Main Buttons for Operations



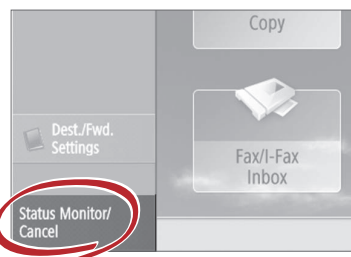
Press  to execute functions,  to cancel operations, and  to clear the current settings.

Accessing the Main Menu




Perform a wide variety of operations from the Main Menu, displayed from any screen by pressing .

Quickly Checking the Status of Machine



All you need to do to check the machine's status is press .

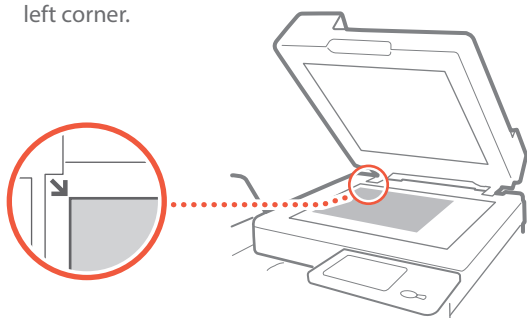
 See "Status Monitor/Cancel" in the e-Manual.

Two Methods for Setting Original Documents

Placing Original Documents Correctly

Placing Original Documents on the Platen Glass

- Place the side to scan face down.
- Place the original documents so that it fits in the back left corner.

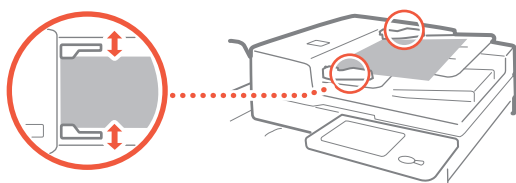


Compatible Types of Original Documents

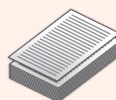
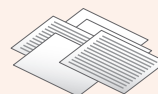
Books,
magazinesNewspaper
clippingsBusiness
cards

Placing Original Documents in the Feeder

- Place the side to scan face up.
- Adjust the slide guide.



Compatible Types of Original Documents

Documents with many pages,
quotations, etc.

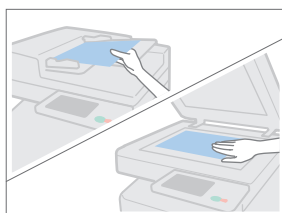


Tips for Copying

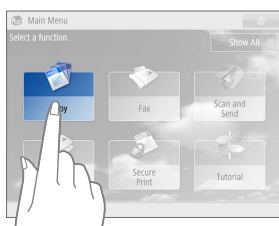
Use helpful functions, such as two-sided printing and staple finishing, to make your copies look better while using paper efficiently.

▶ Basic Copy Flow

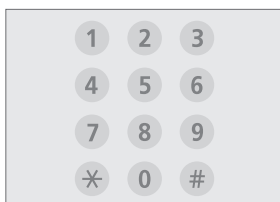
1 | Set the document.



2 | Press [Copy].



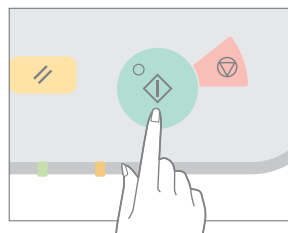
3 | Enter the number of copies.



4 | Set your preferred setting.



5 | Press (Start).



▣ Recommended Settings

Select Color

Select color when copying original documents such as presentation materials, and B&W for estimates.



Copy Ratio

Use "Copy Ratio" when copying to magnify small text for easy reading.



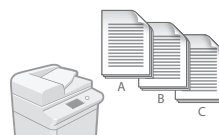
Density

Adjust the text density to make hard to read documents (such as something written in pencil) easier to read.



Finishing (Collate)

Output original documents in sets with the Collate mode, convenient for organizing big copy jobs.



Select Paper

You can select the paper size manually, or let the machine automatically pick the paper size for you.



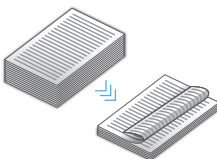
Original Type

Pick one of a variety of different original types when copying to optimize the settings for that original document.



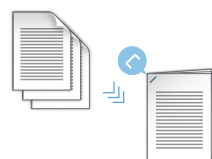
2-Sided

Halve the amount of paper you use by printing on both sides of copied paper.



Finishing (Staple)

Sort and staple copy jobs to make them look neat and professional, for documents such as conference handouts.



» For further information about the functions, see "A Variety of Features," on p.14.



Tips for Printing

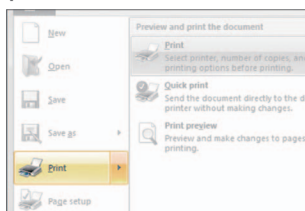
Don't bother getting up! Specify print settings directly from your computer.



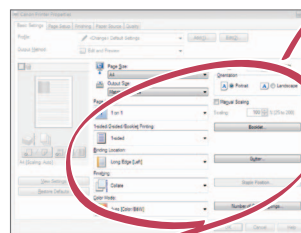
To print from a computer, first install the printer driver. For instructions on installing printer drivers, see the Printer Driver Installation Guide.

▶ Basic Print Flow

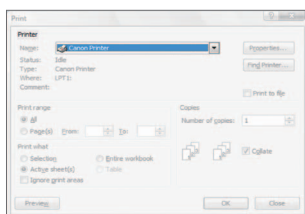
- 1 | Select the print function from the application menu.



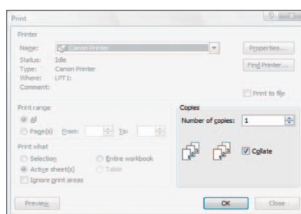
- 4 | Set your preferred setting.



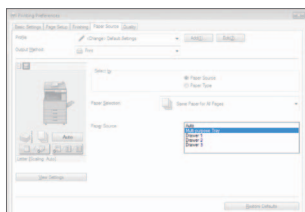
- 2 | Select the machine from [Printer].



- 5 | Enter the number of copies, and press [OK].



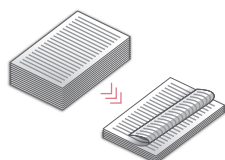
- 3 | Select the paper source.



Recommended Settings

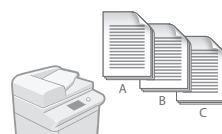
2-Sided

Two-sided printing can save paper, especially for those big copy jobs!



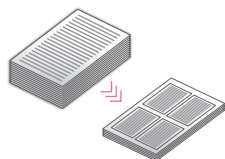
Finishing (Collate)

Use [Collate] when printing a large number of copies to sort them for easy distribution.



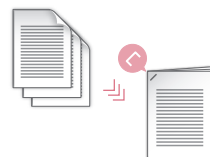
Page Layout

Significantly decrease the amount of paper you use by printing a total of four pages on a single sheet of paper.



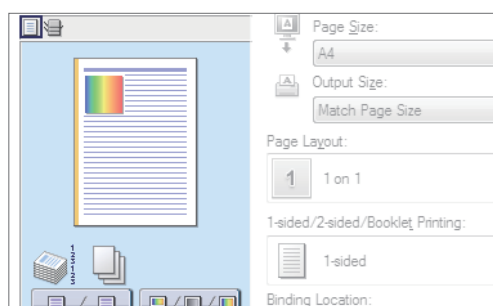
Finishing (Staple)

With Staple mode, you can sort and staple documents. Staple finishing reduces document preparation time.



» For further information about the functions, see "A Variety of Features," on p.14.

Change Print Settings with Just One Easy Click!



Change print settings, such as the color mode and page layout, by simply clicking the icon on the printer driver screen. The icon changes as you adjust the settings, so you can easily see your changes taking effect.



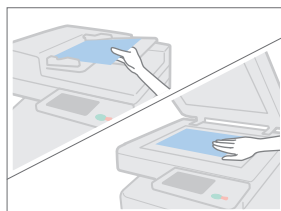
Tips for Faxing

Faxing is easy with these simple steps!

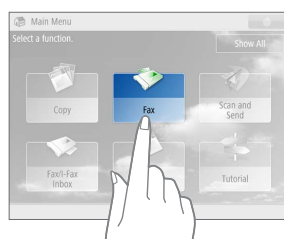
Improve the clarity of your faxes by adjusting settings, such as density or resolution.

▶ Basic Fax Flow

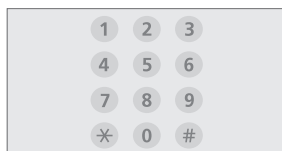
1 | Set the document.



2 | Press [Fax].

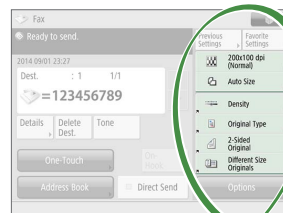


3 | Enter the fax number and press [OK].

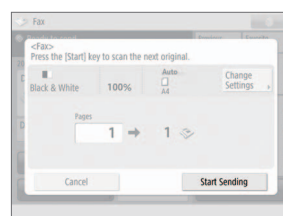


To send a fax to a registered address, press **Address Book**.

4 | Set your preferred setting.

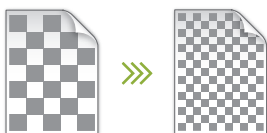


5 | Press (Start) and once scanning is complete, press [Start Sending].



Recommended Settings

Resolution



Improve text clarity by increasing the resolution of a document, when sending documents with small text.

Density



Increase the density of thin text when sending (such as text written in pencil) to make it easier to read.

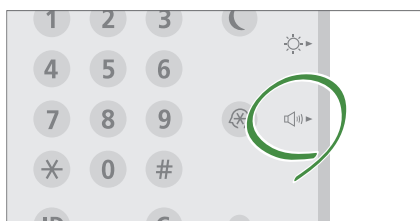
Original Type




Pick one of a variety of different original types when faxing to optimize the settings for that original document.

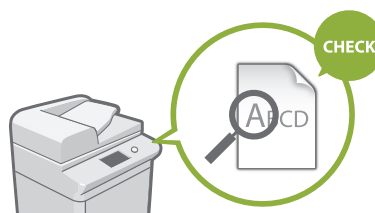
» For further information about the functions, see "A Variety of Features," on p.14.

Press the Button to Adjust the Fax Volume



Adjust the volume when sending and receiving faxes by pressing  on the right side of the control panel.

Previewing Received Faxes Before Printing



Check received faxes before printing, letting you select which to print while saving paper.

See "Fax/I-Fax Inbox" in the e-Manual.

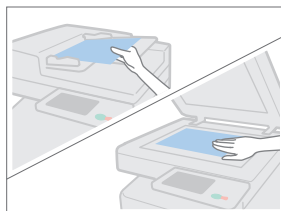


Tips for Scanning

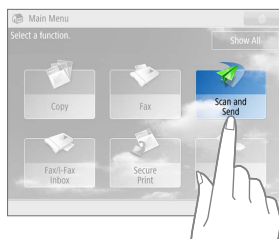
Not enough space for storing mountains of paperwork?
You can scan and store them as data on your computer.

▶ Basic Scan Flow

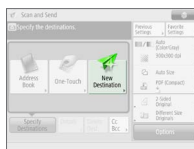
1 | Set the document.



2 | Press [Scan and Send].



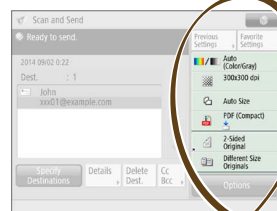
3 | Press [New Destination] and enter the destination address.



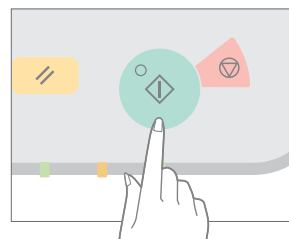
To scan and send to a registered destination, press



4 | Set your preferred setting.



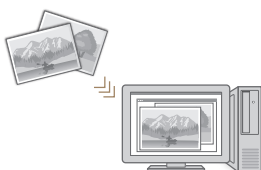
5 | Press (Start).



▣ Recommended Settings

Resolution

You can adjust the resolution when scanning a magazine or picture to make the image more vivid and clear.



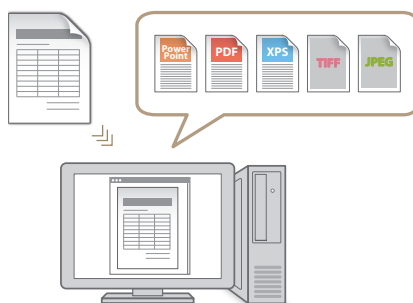
Different Size Originals

Scan a variety of different document sizes (A3, A4, A5, etc.) in one simple operation.



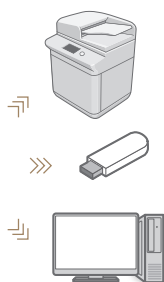
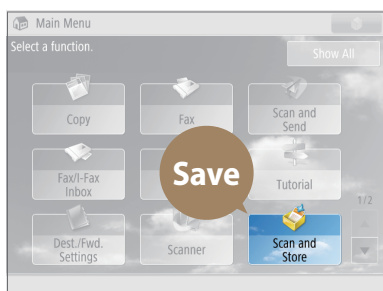
File Format

Save a scanned original document in the format that best suits your needs, such as contracts as PDFs or presentation materials as PowerPoint documents.



» For further information about the functions, see "A Variety of Features," on p.14.

Digitize Stacks of Paper Documents to Save Office Space



Digitize your paper documents by selecting [Scan and Store] when scanning an original document. You can even choose a variety of different destinations to save the data, such as the machine or a file server.

See "Scan and Store" in the e-Manual.

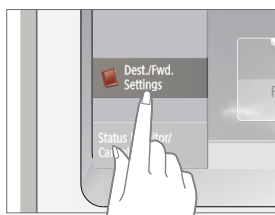


Tips for Registering Destinations

Register destinations in the address book to make sending operation simple.
Increase efficiency by using One-Touch Buttons for frequently used destinations!

▶ Basic Flow for Registering Destinations

1 | Press [Dest./Fwd. Settings].



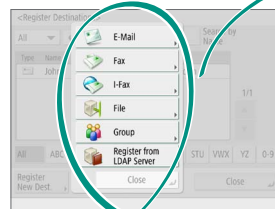
2 | Press [Register Destinations].



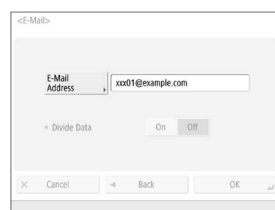
3 | Press [Register New Dest.].



4 | Select the type of destination.

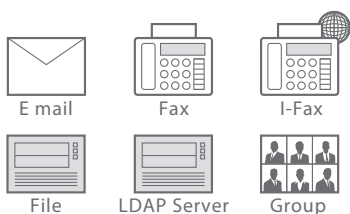


5 | Enter the address and press [OK].



Select the Destination Type

Register e-mail addresses, fax numbers, even servers as destinations! Pick the destination type that is right for you.



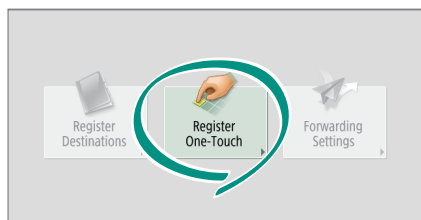
See "Scan and Send" in the e-Manual.

Using [Group]

You can register multiple destinations to a single group.



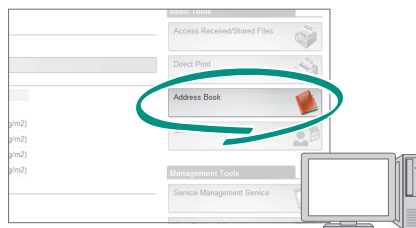
Send Documents Easily With One-touch Buttons



Register an often used destination to a one-touch button with [Register One-Touch], and save time!

See "Scan and Send" in the e-Manual.

Easy Address Editing from Your Computer



You can access the machine from your computer with the Remote UI, enabling you to edit addresses easily with the keyboard.

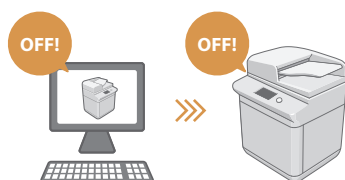
See "Remote UI" in the e-Manual.



And More! A Variety of Features

There are many more helpful features that are not mentioned in this guide.
For details, see the e-Manual.

▣ Change Machine Settings Remotely from Your Computer



Use the "Remote UI" function to edit the address book, check consumable status, and more from your computer.

See "Remote UI" in the e-Manual.

▣ Prevent Security Leaks with Document Security



Password your documents with the Secure Print mode. This feature is perfect for protecting important documents.

See "Secure Print" in the e-Manual.

▣ Professional Documents with Booklet Printing



Making booklets is easy with the [Booklet] option. Use staple finishing to give it an even more professional feel.

See "Copy" in the e-Manual.

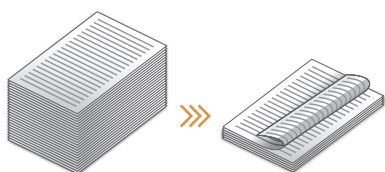
▣ Print Two-Sided ID Cards on One Side of Paper



Check IDs easily by copying both sides of an ID and printing them to a single piece of paper with [ID Card Copy].

See "Copy" in the e-Manual.

▣ Advanced Paper Saving Options



Print up to an incredible 16 pages of original documents on a single sheet of paper with [2-sided] and [N on 1].

See "Copy" in the e-Manual.

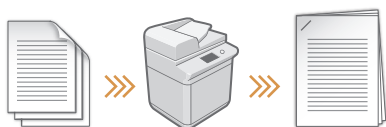
▣ Go Green with Staple-Free Binding



Bind paper without using metal staples with the Eco (Staple-Free) mode. Help the environment, and shred documents without a fuss.

See "Copy" in the e-Manual.

▣ Reorganizing Documents with Staples



Just set "Manual Staple" and pass unstapled original documents through the feeder to staple them. Great for re-stapling!

See "Basic Operations" in the e-Manual.

▣ One-touch Settings



Register often used combinations of settings to "Quick Menu" to efficiently use them with a single button.

See "Quick Menu" in the e-Manual.

**CANON INC.**

30-2, Shimomaruko 3-chome, Ohta-ku, Tokyo 146-8501, Japan

CANON U.S.A., INC.

One Canon Park, Melville, NY 11747, U.S.A.

CANON CANADA INC.

6390 Dixie Road Mississauga, Ontario L5T 1P7, Canada

CANON EUROPA N.V.

Bovenkerkerweg 59, 1185 XB Amstelveen, The Netherlands
(See <http://www.canon-europe.com/> for details on your regional dealer)

CANON AUSTRALIA PTY. LTD

Building A, The Park Estate, 5 Talavera Road, Macquarie Park, NSW 2113, Australia

CANON CHINA CO., LTD

2F Jinbao Building No.89 Jinbao Street, Dongcheng District, Beijing 100005, China

CANON SINGAPORE PTE. LTD.

1 Fusionopolis Place, #15-10, Galaxis, Singapore 138522

CANON HONGKONG CO., LTD

19/F., The Metropolis Tower, 10 Metropolis Drive, Hunghom, Kowloon, Hong Kong

