

# Setup Guide

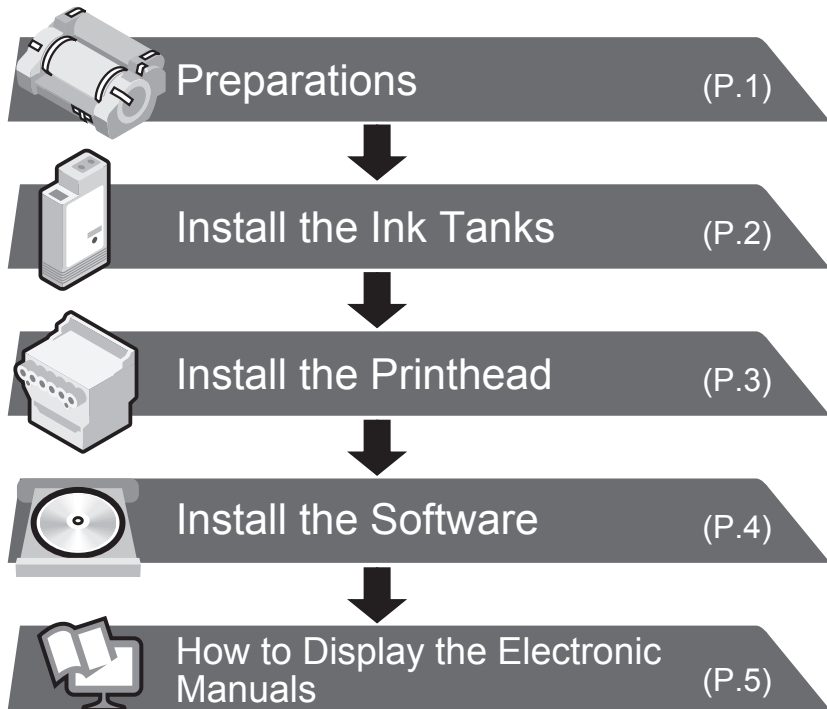
Read this manual before attempting to operate the printer.  
Keep this manual in a handy location for future reference.

**Caution** • Instructions in this Setup Guide show the iPF770 printer. Note that your printer may look different from these illustrations in some cases.

## Introduction

### Overview of Setup

When using the optional stand, the stand needs to be assembled first. Refer to the Stand Setup Guide included with the stand for details on how to assemble the stand.



Details for each step are given in this Setup Guide. Simply follow the instructions to install the printer.  
If an error message is displayed during setup or other problems occur, refer to "Responding to Messages" on page 6.

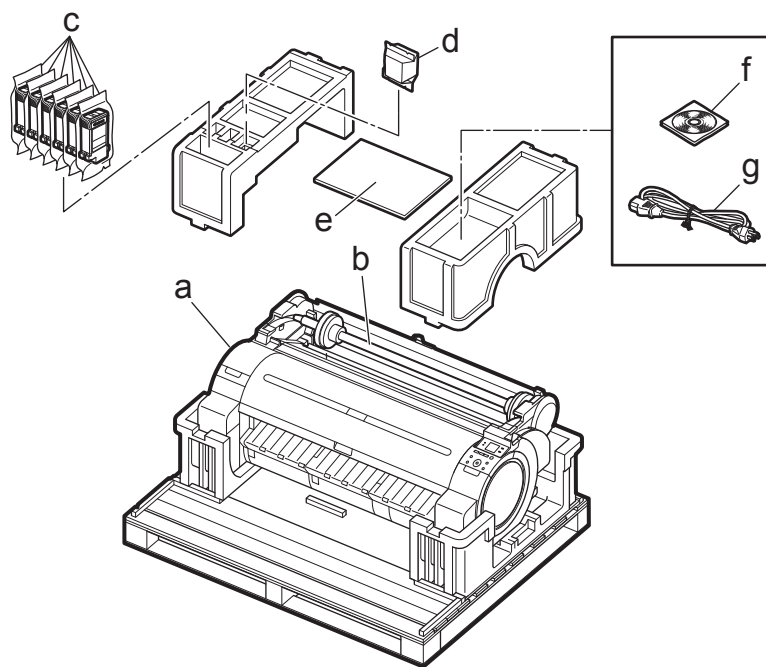
### Space Required for Installation

A space larger than the following dimensions needs to be allocated when setting up this printer.

	Installation space (W x D x H mm)
Printer only	1397 × 1308 × 807
With stand(*) mounted	1397 × 1700 × 1362

\* The optional "Printer Stand ST-27" can be used with the iPF670E/iPF671E.

### Package Contents



- a. Printer
- b. Roll holder: Already attached to printer
- c. Starter ink tanks (for first-time installation) C, M, Y, MBK x2, BK
- d. Printhead
- e. Cautions When Using the iPF670E/iPF671E, Setup Guide (this document)
- f. CD-ROM (for Windows 64-bit)
- g. Power cord

## Preparations

Prepare to use the printer such as by connecting the power cord.

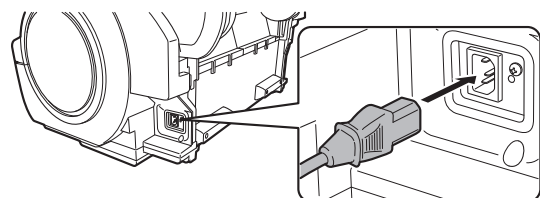
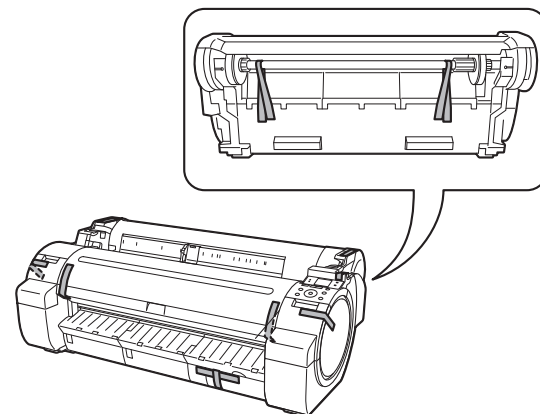
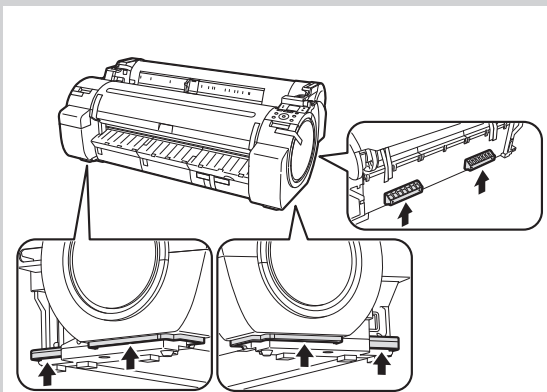
**1** Have 3 or more people grasp the printer carrying handles and place the printer on a flat location such as a table where it will be used.

**2** Remove the orange tape used to secure the roll holder to the printer.

**3** Plug the power cord into the power supply connector on the right of the printer and plug the other end into the outlet.

**Important** • When moving the printer, always have 3 or more people firmly grasp the carrying handles. Holding the printer at other positions is dangerous, and may cause injury and damage if the printer is dropped.

• The way to set the printer down or to carry with the load only to the center of the printer, may cause damage to the printer.



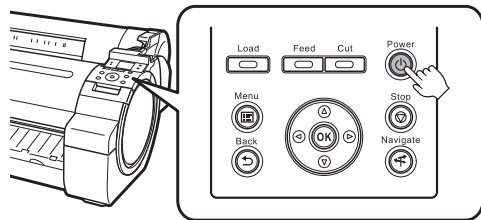


## Install the Ink Tanks

Install the 6 ink tanks by following the guidance displayed on the printer display.

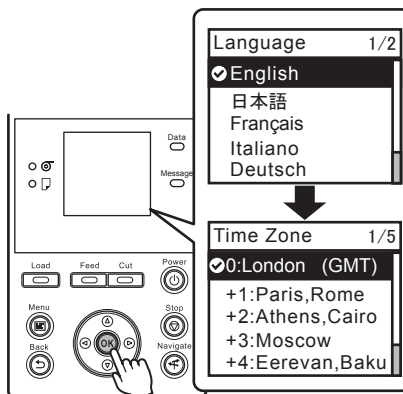
**1**

Press the power button to turn on the printer.



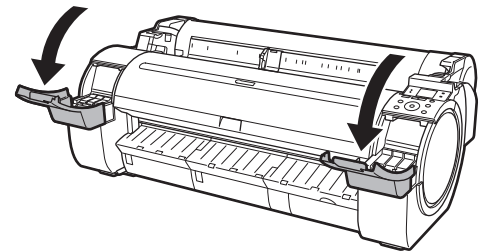
**2**

Select your language and time zone. Use the ▲ and ▼ keys to select and press **OK**.



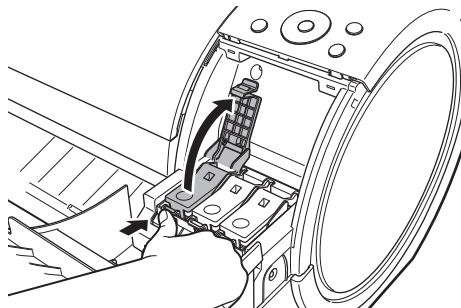
**3**

Instructions on ink tank installation are shown on the display screen. As instructed, grab the handle on the ink tank cover to open it.



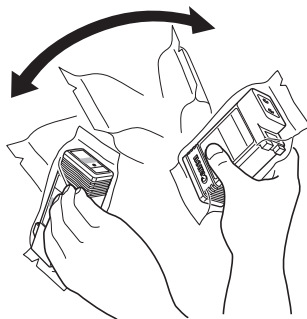
**4**

While pressing the stopper of the ink tank lock lever inwards, open the ink tank lock lever upwards.



**5**

Shake the ink tanks gently 1 to 2 times before opening the pouch.



Important

- Failure to shake ink tanks may result in reduced print quality because ink ingredients have settled on the bottom of the tank.
- If the ink tank is cold, allow it to adjust to room temperature before attaching it to the printer.

**6**

Open the pouch and remove the ink tank.



Important

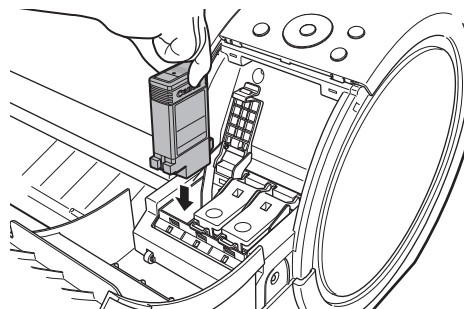
- Never touch the ink holes (a) or metal contacts (b). Touching these parts may cause stains, damage the ink tank, and affect print quality.



- Avoid dropping the ink tank after removing it from the pouch. Otherwise, ink may leak and cause stains.
- Do not remove and shake ink tanks that have already been installed in the printer because ink may leak out.

**7**

Insert the ink tank into the holder facing as shown, with the ink holes down. At this time, detach and reattach the ink tanks 2 to 3 times and ensure that the ink tanks are security attached.

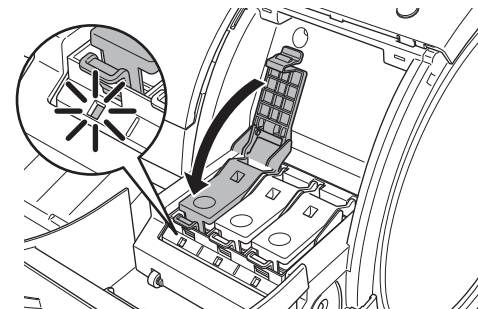


Important

- If the ink tank does not fit in the holder, make sure the color of the ink tank lock lever matches the color of the ink tank, and check the orientation of the ink tank.

**8**

Close the ink tank lock lever until it clicks into place. Make sure the ink lamp is lit in red.



Important

- If the ink lamp is not lit, repeat steps 4 and 8.

**9**

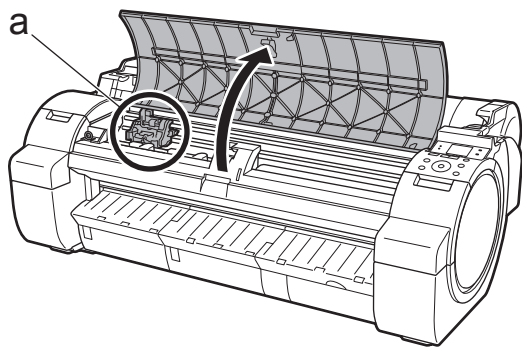
Once you have installed all 6 ink tanks by repeating steps 4 to 8, close the ink tank cover.



## Install the Printhead

Install the printhead by following the guidance displayed on the printer display.

- 1** **Open Upper Cover** is shown on the display screen. As instructed, open the top cover.



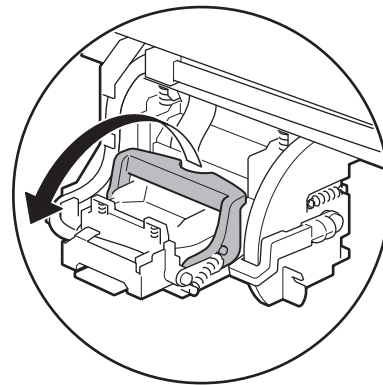
Instructions on printhead attachment are shown on the display screen.



- When installing the printhead, do not move the carriage (a) from the position shown in the figure. If you move the carriage (a), a warning noise sounds and the printhead cannot be installed. If you have moved the carriage (a), close the top cover. The carriage (a) moves to the position shown in the figure.

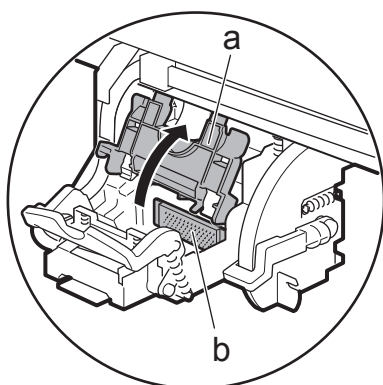
**2**

- Pull the printhead fixer lever forward all the way to open it completely.



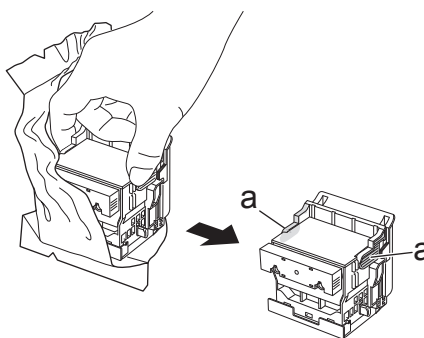
**3**

- Lift the printhead fixer cover (a) to open it fully. At this time, make sure that no debris becomes adhere to the contacts (b) on the carriage.



**4**

- Hold the printhead by the grips (a) as you remove it from the pouch.



**5**

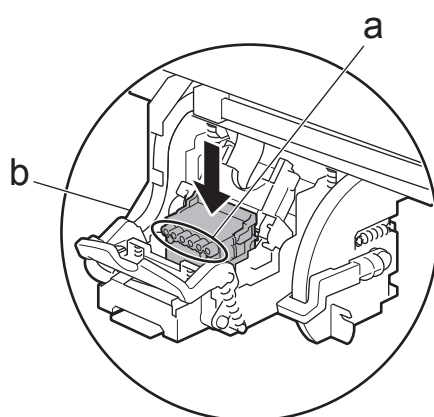
- Remove the 2 orange protective parts.



- Never touch the parts covered by the protective part. This may damage the printhead and affect printing quality.
- The printhead contains ink. When removing the protective material, it is recommended that you do it over the bag that the printhead came in to avoid spilling the ink and soiling your clothes or the surrounding items.
- Do not reattach the protective part after removing it. Dispose of these materials according to local regulations.

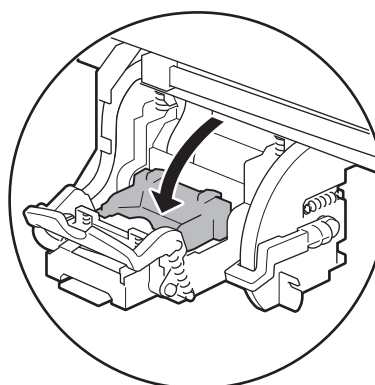
**6**

- Insert the printhead into the carriage (b) with the ink holes (a) facing away from the printer as shown in the figure. Carefully push the printhead firmly into the carriage (b), ensuring that the part covered by the protective part does not touch the carriage.



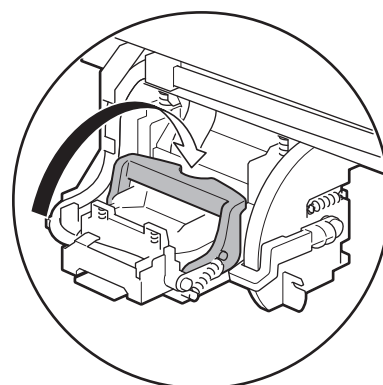
**7**

- Pull the printhead fixer cover down toward the front to lock the printhead in place.



**8**

- Push the printhead fixer lever all the way back.



**9**

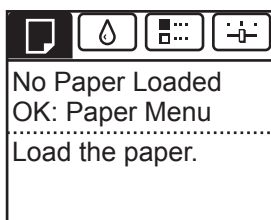
- Close the top cover.

**10**

- Charging the system with ink begins automatically. Charging the ink takes around 10 minutes.

Once the screen on the right appears on the display, the ink charging is complete.

It is recommended that you begin installing the software while waiting for charging the ink to complete. (See "Install the Software" on P.4)



- Charging the system with ink fills the system from the ink tanks to the printhead. In addition, cleaning is performed to keep the printer in optimal condition. This may cause the remaining ink indicator and maintenance cartridge capacity indicator to drop some amount. The starter ink tank is for first-time installation. It is recommended that you purchase replacement ink tanks quickly.



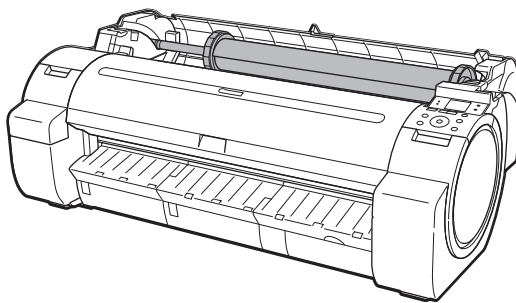
### ■ How to Adjust the Printhead

Once the setup has finished, it is recommended that you execute **Auto(Standard)** in **Head Posi. Adj.** to adjust the printhead before printing.

The method for adjusting the printhead is given in "Automatic Adjustment to Straighten Lines and Colors" in the User's Guide, which can be accessed using the procedure in "How to Display the Electronic Manuals" (P.5).

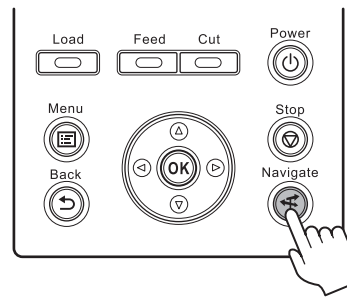
### ■ How to Load Paper

The method for loading paper is given in the User's Guide which can be accessed using the procedure in "How to Display the Electronic Manuals" (P.5) and the control panel navigation function.



Follow the procedure below to display the navigation on how to load roll paper.

#### 1. Press **Navigate**.



#### 2. Use the **▲** and **▼** keys to select **Load Roll Paper** and press **OK**.

#### 3. Use the **▲** and **▼** keys to select **View Op. Guide** and press **OK**. The navigation starts.

## Install the Software

Check your OS, and install the software using the following method.

Install the software by following the instructions on the screen that is displayed.

### For Windows (64-bit)

Install the software from the included UserSoftware CD-ROM.  
Insert the UserSoftware CD-ROM into the CD-ROM drive of the computer and install the software.

### For Windows (32-bit) and Mac OS

The software is not included.  
Download and install the necessary software from the Canon website.



• Always login as a user who has administrator privileges when installing the software.

## Cautions When Connecting the Printer

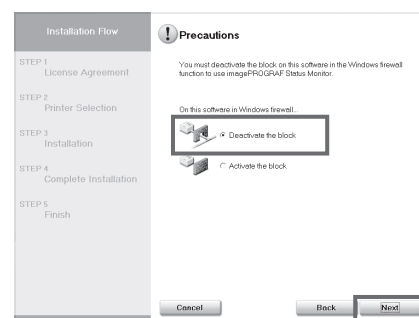
Connect the computer and printer during installation or after installation of the printer driver. This printer can be used connected by USB or connected via the network.

Take care of the details in "For USB connection" and "For network connection" below depending on the connection method.



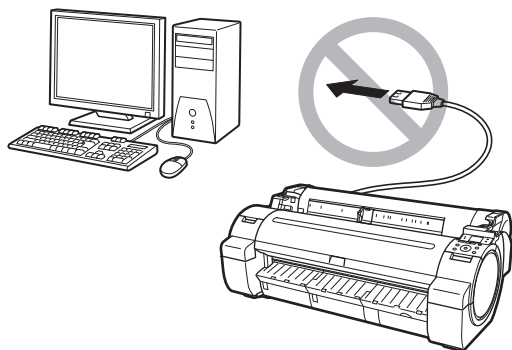
The screen on the right may be displayed during the installation depending on the security settings of your computer.

• Select **Deactivate the block** and click **Next**.

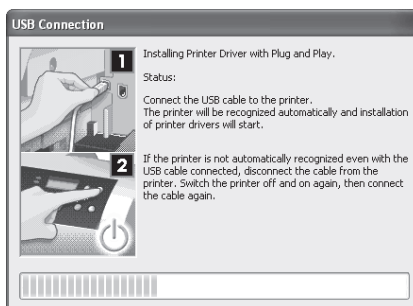


### For USB connections

- Use a USB cable that conforms to the Hi-Speed USB specification.
- Before turning on the computer, check that the printer is not connected to the computer.



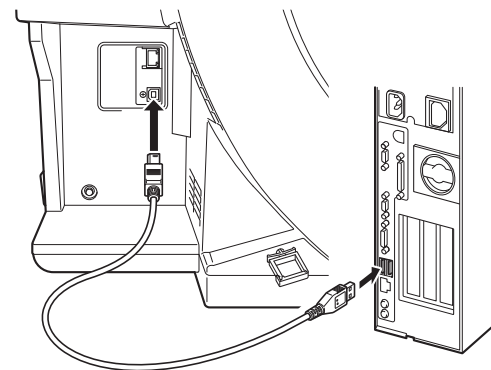
- If you are using Windows, connect the USB cable after the following screen is displayed during the printer driver installation. If you connect the USB cable first, the printer driver might not install correctly.



• If a warning message is displayed, click **Retry** to try again.



- When connecting the USB cable to the printer, take care to avoid inserting it into the LAN connector.

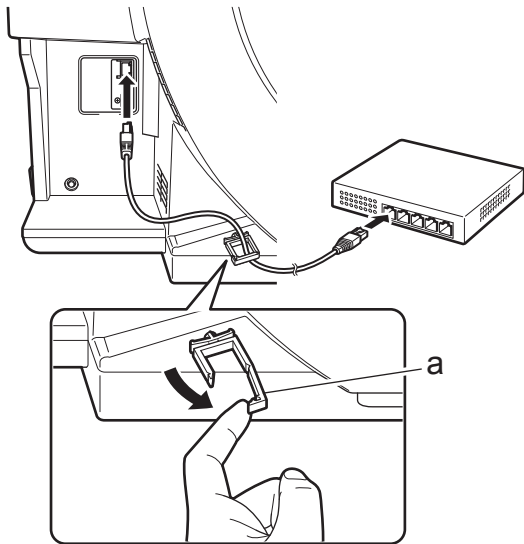


This completes the cautions during USB connection.

Proceed to "How to Display the Electronic Manuals" on P.5.

For network connection

- If the printer is already connected to the network, confirm the IP address assigned to the printer. Ask your network administrator for further information.
- When connecting the LAN cable to the LAN port on the back of the printer, feed the network cable through the wiring retainer (a).



• If the printer is on, the Link indicator under the LAN port lights.

1000Base-T connection	The LED on the bottom lights green.
100Base-TX connection	The LED on the top lights orange.
10Base-T connection	The LED on the top lights green.

- If the printer you want to use is not displayed in the results of searching for usable printers on the network, setup an IP address for the printer and then configure it on the printer by referring to "When the printer cannot be found on the network" on P.5.
- Using the DHCP server function to automatically assigned IP addresses requires separate settings. (See "Using DHCP" on P.5)

When the printer cannot be found on the network

If your printer cannot be found when connecting to the network for the first time, setup an IP address for the printer and then configure it on the printer.

Once charging the ink has finished, specify the IP address on the printer's control panel.

**Important** • Do not operate the printer until charging the ink has finished.

1

Select the following menu items in order from the printer control panel to display the IP address input screen.

Set./Adj. Menu  
└ Interface Setup  
└ TCP/IP  
└ IPv4  
└ IPv4 Settings  
└ IP Address

2

Enter the IP address.

3

Press **Menu**.

4

On the registration confirmation message that appears, select **Yes** using the **▲** and **▼** keys, and then press **OK**.

The IP address is set on the printer.

Next, restart installation of the printer driver.

Using DHCP

To use the DHCP server function to automatically allocate an IP address to the printer, one of the following settings needs to be configured. Check with your network administrator for the settings that match your system.

When used in an environment with a DNS server

Configure the DNS dynamic update function in the printer and register the printer DNS host name with the DNS server.

When used in an environment without a DNS server

Configure the DHCP server to always allocate the same IP address to the printer.

This section describes how to configure the DNS dynamic update function from the printer control panel.



• The DNS dynamic update function can also be configured using Remote UI. Refer to "Configuring the Printer's TCP/IP Network Settings With RemoteUI" in the user guide for details.

■ How to Configure the DNS Dynamic Update Function

Select the following menu items in order from the printer control panel and change DNS dynamic update to **On**.

Set./Adj. Menu  
└ Interface Setup  
└ TCP/IP  
└ IPv4/IPv6  
└ DNS Settings  
└ DNS Dync update



• If **Use the same host name and domain name as IPv4?** is displayed when setting **IPv6**, select **Off**.



How to Display the Electronic Manuals

Manuals describing how to use the printer and how to resolve problems are not included. Refer to the manual published on the website together with the included "Cautions When Using the iPF670E/iPF671E". The manuals on the website are common to the iPF670 and iPF671.

The following shows how to display the manuals on the website.

- ① Click the **User Manual** button in the **Support** sheet of software such as the printer driver (User's Guide, Paper Reference Guide only)
- ② Download from the Canon website (excluding Paper Reference Guide)



# Responding to Messages

Error messages may appear on the display screen of the control panel during printer installation in some cases. If so, it may not indicate a problem with the printer, and the issue may be easily resolved. Common messages and the causes are listed here with corrective actions. For more information on other messages, refer to the User's Guide. (See "How to Display the Electronic Manuals" on P.5)

Message	Cause	Corrective Action
Check if ink tank is set, and its color and direction.	There is no ink tank of the indicated color in the printer.	Load or reload the ink tank. (see steps 3-9 on page 2)
Cannot recognize print head. Open the top cover and re-insert the printhead.	The printhead is not installed.	Install the printhead. (see steps 1-9 on page 3)
Insert the maintenance cartridge.	The maintenance cartridge is removed.	Install the maintenance cartridge correctly.
Hardware error. 03130031-2F7x (where x is 0, 1, or 2)	The ink tank is not installed correctly.	Turn off the power, remove and then reinstall all of the ink tanks, and then turn on the power. (See steps 3-4 and 7-9 on page 2) If the same message is displayed again, write down the error code and message, turn off the printer, and contact your Canon dealer for assistance.
Hardware error. xxxxxxx-xxxx (x represents a letter or number)	Another kind of error has occurred.	Turn off the printer and wait at least three seconds before restoring the power. If the message still appears, write down the error code and message, turn off the printer, and contact your Canon dealer for assistance.
ERROR Exxx-xxxx (x represents a letter or number)	You may have encountered an error that cannot be resolved.	Write down the error code and message, turn off the printer, and contact your Canon dealer for assistance.