

User Manual

This manual describes the setup and operating procedures for the WA10 Network Adapter for the Canon imageFORMULA DR series. To use this device, read this manual together with the instructions for the scanner to be connected.

Procedures and Example Screens

This manual describes operations using Windows 7 as examples.

Table of Contents

Safety Precautions	4
About This Device	6
Setup	8
About Wi-Fi Connections	10
Connecting Using the Wireless Settings of the Computer	13
Selecting and Connecting to a Destination Access Point	15
Specifying and Connecting to an Access Point	18
Connecting Using WPS	20
Connecting to Another Device with One-to-One Connection	21
Connecting to the Wired Network	23
Scanning with the CaptureOnTouch Job Tool from a Smart Device	25
Scanning from a Computer with the CaptureOnTouch Job Tool	32
Using the Web Menu	37
Troubleshooting	43
Specifications	45



Trademarks

- Canon and the Canon logo are registered trademarks of Canon Inc. in the United States and may also be trademarks or registered trademarks in other countries.
- imageFORMULA is a trademark of CANON ELECTRONICS INC.
- Microsoft and Windows are registered trademarks of Microsoft Corporation in the United States and other countries.
- Wi-Fi, Wi-Fi Alliance, the Wi-Fi CERTIFIED logo and the Wi-Fi Protected Setup logo are registered trademarks of the Wi-Fi Alliance.
- Wi-Fi CERTIFIED, WPA, WPA2 and Wi-Fi Protected Setup are trademarks of the Wi-Fi Alliance.
- “WPS” in the settings, onscreen displays and in this manual denotes Wi-Fi Protected Setup.
- Other company names and product names in this manual are registered trademarks or trademarks of each company.

Copyright

Copyright 2018 by CANON ELECTRONICS INC. All rights reserved. No part of this publication may be reproduced or transmitted in any form or by any means, electronic or mechanical, including photocopying and recording, or by any information storage or retrieval system without the prior written permission of CANON ELECTRONICS INC.

Disclaimers

The information in this document is subject to change without notice.

CANON ELECTRONICS INC. MAKES NO WARRANTY OF ANY KIND WITH REGARD TO THIS MATERIAL, EITHER EXPRESS OR IMPLIED, EXCEPT AS PROVIDED HEREIN, INCLUDING WITHOUT LIMITATION, THEREOF, WARRANTIES AS TO MARKETABILITY, MERCHANTABILITY, FITNESS FOR A PARTICULAR PURPOSE OF USE OR NON-INFRINGEMENT. CANON ELECTRONICS INC. SHALL NOT BE LIABLE FOR ANY DIRECT, INCIDENTAL, OR CONSEQUENTIAL DAMAGES OF ANY NATURE, OR LOSSES OR EXPENSES RESULTING FROM THE USE OF THIS MATERIAL.

CANON ELECTRONICS INC. IS NOT LIABLE FOR THE STORAGE AND HANDLING OF DOCUMENTS SCANNED WITH THIS PRODUCT, OR THE STORAGE AND HANDLING OF RESULTING SCANNED IMAGE DATA.

IF YOU INTEND TO DISCARD THE ORIGINALS OF SCANNED DOCUMENTS, YOU THE CUSTOMER ARE RESPONSIBLE FOR INSPECTING THE SCANNED IMAGES AND VERIFYING THAT DATA IS INTACT.

THE MAXIMUM LIABILITY OF CANON ELECTRONICS INC. UNDER THIS WARRANTY IS LIMITED TO THE PURCHASE PRICE OF THE PRODUCT COVERED BY THE WARRANTY.

FCC REGULATIONS (For North America)

Network Adapter, Model 6830020, 6830040

This device complies with Part 15 of FCC Rules and Industry Canada licence-exempt RSS standard(s). Operation is subject to the following two conditions: (1) this device may not cause interference, and (2) this device must accept any interference, including interference that may cause undesired operation of this device.

Le présent appareil est conforme aux la partie 15 des règles de la FCC et CNR d'Industrie Canada applicables aux appareils radio exempts de licence. L'exploitation est autorisée aux deux conditions suivantes : (1) l'appareil ne doit pas produire de brouillage, et (2) l'utilisateur de l'appareil doit accepter tout brouillage radioélectrique subi, même si le brouillage est susceptible d'en compromettre le fonctionnement.

This equipment complies with FCC/IC radiation exposure limits set forth for an uncontrolled environment and meets the FCC radio frequency (RF) Exposure Guidelines in Supplement C to OET65 and RSS-102 of the IC radio frequency (RF) Exposure rules. This equipment has very low levels of RF energy that it deemed to comply without maximum permissive exposure evaluation (MPE). But it is desirable that it should be installed and operated keeping the radiator at least 20cm or more away from person's body (excluding extremities: hands, wrists, feet and ankles).

Cet équipement est conforme aux limites d'exposition aux rayonnements énoncées pour un environnement non contrôlé et respecte les règles les radioélectriques (RF) de la FCC lignes directrices d'exposition dans le Supplément C à OET65 et d'exposition aux fréquences radioélectriques (RF) CNR-102 de l'IC. Cet équipement émet une énergie RF très faible qui est considérée conforme sans évaluation de l'exposition maximale autorisée. Cependant, cet équipement doit être installé et utilisé en gardant une distance de 20 cm ou plus entre le dispositif rayonnant et le corps (à l'exception des extrémités : mains, poignets, pieds et chevilles).

FCC CAUTION

Changes or modifications not expressly approved by the party responsible for compliance could void the user's authority to operate the equipment.

Note: This equipment has been tested and found to comply with the limits for a Class B digital device, pursuant to Part 15 of the FCC Rules. These limits are designed to provide reasonable protection against harmful interference in a residential installation. This equipment generates, uses, and can radiate radio frequency energy and, if not installed and used in accordance with the instructions, may cause harmful interference to radio communications. However, there is no guarantee that interference will not occur in a particular installation. If this equipment does cause harmful interference to radio or television reception, which can be determined by turning the equipment OFF and ON, the user is encouraged to try to correct the interference by one or more of the following measures:

- Reorient or relocate the receiving antenna.
- Increase the separation between the equipment and receiver.
- Connect the equipment into an outlet on a circuit different from that to which the receiver is connected.
- Consult the dealer or an experienced radio/TV technician for help.

Use of shielded cable is required to comply with Class B limits in Subpart B of Part 15 of FCC Rules.

Do not make any changes or modifications to the equipment unless otherwise specified in the manual. If such changes or modifications should be made, you could be required to stop operation of the equipment.

Canon U.S.A. Inc.

One Canon Park, Melville, NY 11747, U.S.A.

Tel. No. 1-800-OK-CANON (1-800-652-2666)

This transmitter must not be co-located or operated in conjunction with any other antenna or transmitter.



AVERTISSEMENT

Ce produit émet un flux magnétique de faible niveau. Si vous utilisez un stimulateur cardiaque ou pacemaker et éprouvez une sensation inhabituelle, éloignez-vous de la machine et consultez votre médecin.

RADIO INTERFERENCE REGULATIONS (For 120 V models)

This digital apparatus does not exceed the Class B limits for radio noise emissions from digital apparatus as set out in the interference-causing equipment standard entitled "Digital Apparatus", ICES-003 of the Industry Canada.

RÈGLEMENT SUR LE BROUILLAGE RADIOÉLECTRIQUE (For 120 V models)

Cet appareil numérique respecte les limites de bruits radioélectriques applicables aux appareils numériques de Classe B prescrites dans la norme sur le matériel brouilleur: "Appareils Numériques", NMB-003 édictée par l'Industrie Canada.

Für EMVG

Dieses Produkt ist zum Gebrauch im Wohnbereich, Geschäfts-und Gewerbebereich sowie in Kleinbetrieben vorgesehen.

Model Names

The following names may be provided for the safety regulations in each sales region of the Network Adapter.

WA10: Model 6830020, 6830040

Safety Precautions

About wireless communication functions

This device incorporates wireless communication functions. The radio waves used for wireless communication functions can affect medical and other devices, which could cause serious accidents. Do not use the wireless communication functions in the following conditions.

- Do not use the wireless communication functions if you have a heart pacemaker. The radio waves may affect pacemaker operation.
- Do not use the wireless communication functions near persons using medical devices like heart pacemakers. The radio waves may affect pacemaker and similar devices' operation. Contact the appropriate medical institution before use.
- Do not use the wireless communication functions inside medical institutions such as hospitals, or near electronic medical equipment. The radio waves may affect electronic medical equipment. Consult with any medical institution before using it inside their facilities.
- Do not use the wireless communication functions inside aircraft. The radio waves may affect precision equipment in the aircraft, and could cause a malfunction resulting in serious accident.
- Do not use the wireless communication functions near automatically controlled devices such as fire alarms. The radio waves may affect such devices and could cause a malfunction resulting in accident.
- When using the wireless communication functions, keep this device at least 20 cm from your body.

About the radio waves

This device operates in the 2.4 GHz frequency band (2.400 to 2.4835 GHz). Other users of these frequencies include products such as microwave ovens, scientific and medical devices, similar Wi-Fi stations, wireless intercom radio equipment for mobile device identification used in industrial production lines (requiring licensing), specific low-power radio stations that do not require licenses, amateur radio stations and others (all afterwards called "other stations"). When using, be aware of the following.

1. Before using this device, check whether other stations are operating.

2. If radio frequency interference occurs between this device and other stations, immediately relocate the device or stop using it (stop transmitting).
After stopping, consult with your retailer or with our sales staff regarding measures to avoid interference (e.g., partitioned installation).
3. Otherwise, if troubles occur from radio frequency interference by this device to other stations, consult with your retailer or our sales staff.

European Union (and EEA) only.



This symbol indicates that this product is not to be disposed of with your household waste, according to the WEEE Directive (2002/96/EC) and your national law. This product should be handed over to a designated collection point, e.g., on an authorized one-for-one basis when you buy a new similar product or to an authorized collection site for recycling waste electrical and electronic equipment (EEE). Improper handling of this type of waste could have a possible negative impact on the environment and human health due to potentially hazardous substances that are generally associated with EEE. At the same time, your cooperation in the correct disposal of this product will contribute to the effective usage of natural resources. For more information about where you can drop off your waste equipment for recycling, please contact your local city office, waste authority, approved WEEE scheme or your household waste disposal service. For more information regarding return and recycling of WEEE products, please visit www.canon-europe.com/environment. (EEA: Norway, Iceland and Liechtenstein)

Regional availability and limitations

Five versions of this product are provided for compliance with the various international wireless laws. The regions of availability for each version are as follows. Please note that each version may be used only in its applicable country/region. For regions not included in the following list, contact customer service.

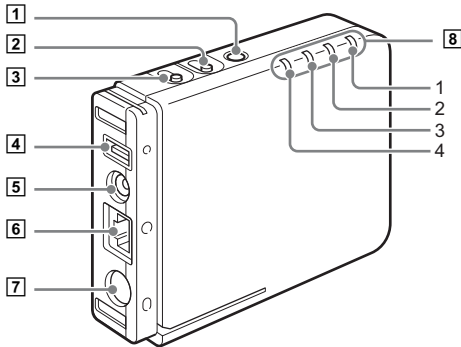
Version Name	Product Code	Applicable Country/Region	Wireless LAN Standard	Corresponding Channels	Maximum Wireless Output
WA10 JP	2999C001 3126C001	Japan	IEEE 802.11b/g/n	Channels 1 to 11 (2.412 to 2.462 GHz)	EIRP 11.48 dBm
WA10 USA	2999C002 3126C002	USA, Canada, Mexico, Brazil, Argentina, Colombia, Peru, Panama			
WA10 EU	2999C003 3126C003	Austria, Belgium, Bulgaria, Cyprus, Czech Republic, Denmark, Estonia, Finland, France, Germany, Greece, Hungary, Ireland, Italy, Latvia, Lithuania, Luxembourg, Malta, Netherlands, Poland, Portugal, Romania, Slovakia, Slovenia, Spain, Sweden, United Kingdom, Iceland, Liechtenstein, Norway, Switzerland, Turkey, Singapore, Vietnam, Philippines, Indonesia, Malaysia, Thailand, Chile, Russia, Australia, New Zealand, Hong Kong			
WA10 KR	2999C004 3126C004	Korea			
WA10 INDIA	2999C005 3126C005	India			

About This Device

This device allows you to connect LAN-compatible computers to a scanner via a network. By connecting a scanner to the device with a USB cable, you can perform scanning operations from a computer via the network.

With a Wi-Fi connection, by connecting this device to a wireless base station (access point) in the network environment, any computer in the network can use the scanner. The device is very simple to connect if the access point supports WPS (Wi-Fi Protected Setup).

Names of Parts



1 Power button

Turns on this device. The power lamp lights blue when the device turns on.

When the device's power is on, press and hold this button to turn it (and the power lamp) off.



Hint

When a scanner is connected, the device's power will be linked to the scanner and will turn on/off when the scanner turns on/off.

2 WPS/Reset button

Press to connect with a WPS-compatible access point.

Hold this button while turning the device on, and keep holding until it starts up, to return the device to its factory default state.

3 Wireless On/Off button

Holding this button for five seconds switches between wired LAN and Wi-Fi connection methods.

Hold this button while turning the device on, and keep holding until it starts up, to set the network mode to AP mode.

4 USB connector

Connect this device to the scanner using the USB cable.

5 Power output connector

Use the supplied power relay cable to connect this to the scanner's power connector.

6 LAN port (RJ-45)


For wired LAN connection, connect a network cable that supports RJ-45 (10Base-T, 100Base-TX, or 1000Base-T).

7 Power input connector

Connect the AC adapter supplied with the scanner here.

8 Lamps

The following lamps indicate the device state.

Lamps		Meaning	
1	 (Power Lamp)	Lit (blue)	Power on
		Unlit	Power off
2	Wireless	Lit (green)	Wireless LAN on
		Unlit	Wireless LAN off

Lamps		Meaning	
3	Connection	Lit (green)	Station mode: connecting to the access point See "Network modes" (p. 10) DHCP setting on in wired LAN mode
		Lit (red)	Initializing setup
		Blinking (green)	WPS executing
		Blinking (red)	WPS Error
		Lit (orange)	Starting up in AP mode See "Network modes" (p. 10) DHCP setting off in wired LAN mode
		Unlit	Wireless LAN stopping
4	Status	Lit (green)	Transferring data

Setup

(1) Installing the Scanner Driver

To use the device, the driver of the scanner to be used in conjunction with the device must be updated to its latest version.

The scanner driver is available on the downloads page of the Canon website. For details on acquiring and installing the driver, visit the Canon support website.

<http://www.canon-elec.co.jp/products/ims/softwareDownload/index.html>

Supported scanners

This unit supports the following scanners.

Scanner	Driver version
DR-C230	1.0.11705.08001 SP2
DR-C240	1.1.11508.3001 SP4
DR-M140	1.2.11407.1001 SP7
DR-M160II	1.2.11402.06001 SP7
DR-M260	1.0.11705.30001 SP4
DR-M1060	1.0.11402.20001 SP6

An update is required for scanner driver versions indicated above and earlier. For details on how to acquire the latest scanner driver and the latest information on supported models, visit the Canon support website.

A special application is required to connect smart devices (smartphones, tablet devices, etc.) to this device via Wi-Fi connection. For details on acquiring and using this software, visit the Canon support website.

(2) Connecting to the Scanner

- ① Connect the supplied USB cable to the USB ports on the device and the scanner.

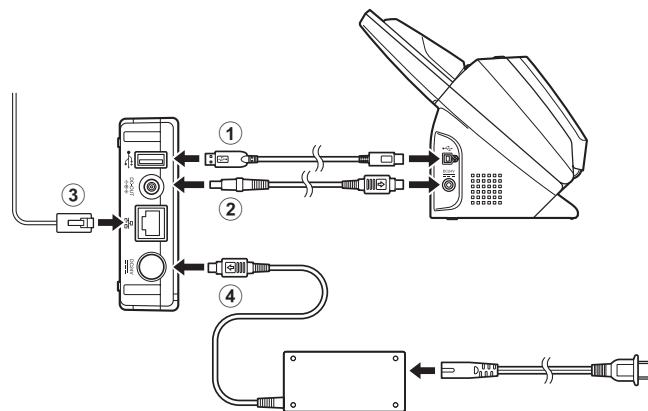
When connecting the device to a scanner that supports USB 3.0/3.1, use the USB cable supplied with the scanner.

- ② Connect the supplied power relay cable to the power output connector on the device and the power connector on the scanner.
- ③ For wired LAN connection, plug the network cable's connector (RJ-45) into the LAN port.

⚠ CAUTION

Hold the Wireless On/Off button for five seconds to switch the device to wired LAN mode.

- ④ Connect the AC adapter supplied with the scanner to the device, and connect the power plug to a power outlet.

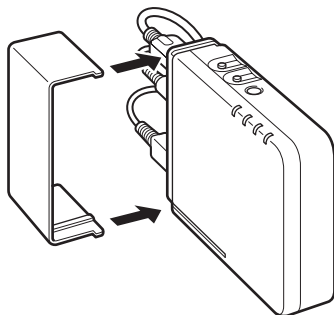


⚠ CAUTION

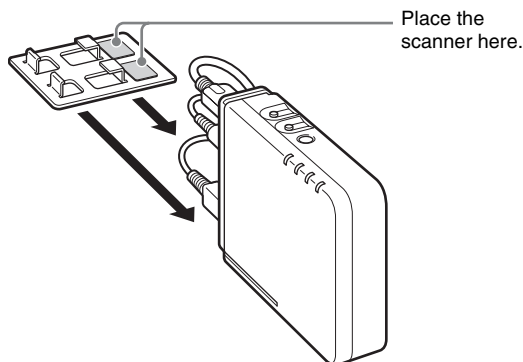
Connect and disconnect the AC adapter or power relay cables by holding their plugs. Connecting and disconnecting by the cable may result in damage to the cable.

Cord Cover and Stand

You can attach the supplied cord cover to protect the connected cable's connector.



You can attach the stand to set the device upright. In addition, placing the scanner on the stand will stabilize the device.



CAUTION

- When connecting the device to a scanner equipped with a fan, maintain a space of at least 10 mm between the device and the scanner so as not to obstruct the vents. If you attached the device to the stand and are placing the scanner on the stand, be sure to position the device so that it does not obstruct the scanner's vents.
- When the stand is attached to the device, attach the cord cover as well to prevent disconnection of the stand.

About Wi-Fi Connection Software

To establish a Wi-Fi connection, the WA10 Wireless Connection Tool can be run from the bundled Setup disc.

System requirements

Supported operating systems:

- Windows 7 Service Pack 1 or later (32-bit and 64-bit editions)
- Windows 8.1 (32-bit and 64-bit editions)
- Windows 10 (32-bit and 64-bit editions)
- Windows Server 2008 R2 SP1 (64-bit edition)
- Windows Server 2012 R2 (64-bit edition)
- Windows Server 2016 (64-bit edition)

Microsoft .NET Framework: 4.5.2 or later

This is the environment as of February 2018.

For the latest software support information, go to the Products page on the Canon website.

Supported wireless standards: IEEE 802.11b/g/n

About Wi-Fi Connections

Connect the device to an access point or directly to a computer according to the network environment.

Network modes

This device has the following two network modes.

Network mode	Description
AP mode	This mode provides independent operation without a separate wireless base station (access point). It provides a one-to-one connection to a computer.
Station mode	This mode provides wireless client operation. In this mode, computers connect to this device via a separate wireless access point.

To connect via Wi-Fi, set this device's network mode to AP mode. Using the WA10 Wireless Connection Tool to connect this device to an access point sets the network mode to Station mode.

⚠ CAUTION

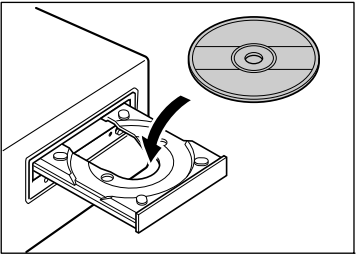
The device's factory default setting is AP mode.

Running the WA10 Wireless Connection Tool

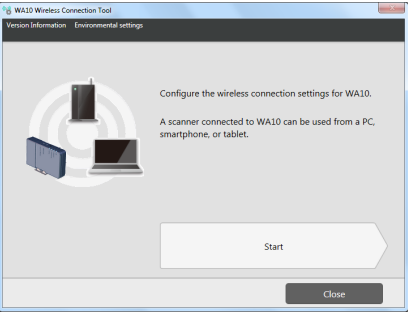
❗ IMPORTANT

- Log on to Windows as an Administrator.
- Close all other applications before running the software.

1 Insert the software setup disc into the computer's disc drive.



On the software setup disc, execute WA10WifiConnectionTool.exe.



⚠ CAUTION

The WA10 Wireless Connection Tool requires that .NET Framework 4.5.2 or higher be installed. You can install it by running NDP452-KB2901907-x86-x64-AIOS-ENU.exe on the disc.

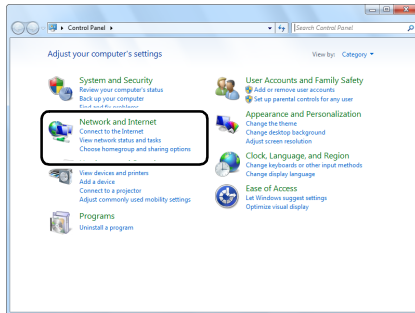
💡 Hint

- Click [Version Information] to display WA10 Wireless Connection Tool version information.
- Click [Environmental settings] - [Log settings] to display the [Log File Settings] screen and collect log files.

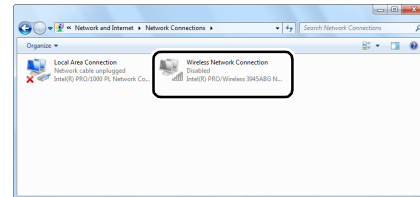
Enabling the wireless LAN function of the computer


To make a Wi-Fi connection, turn on the computer's wireless LAN function.

- 1 Click the Start button - [Control Panel] - [View network status and tasks].

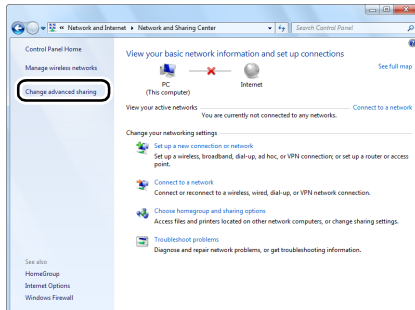


- 3 If the [Wireless Network Connection] icon is [Disabled], double-click the icon.

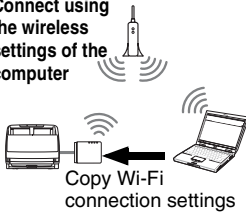

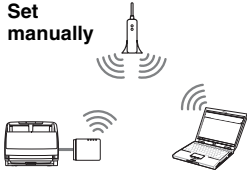




- 4 Click  to close the settings screen.

- 2 Click [Change adapter settings].



Connection Methods

Access Point Connection				One-to-One Connection
<p>Connect using the wireless settings of the computer</p>  <p>Copy Wi-Fi connection settings</p> <p>Connect to this device using the wireless settings of the computer connected to the access point.</p> <p>→ See “Connecting Using the Wireless Settings of the Computer” (p. 13)</p>	<p>Select the destination access point</p>  <p>Select the access point from the destination list for this device's connection.</p> <p>→ See “Selecting and Connecting to a Destination Access Point” (p. 15)</p>	<p>Set manually</p>  <p>Configure the device manually according to your network environment.</p> <p>→ See “Specifying and Connecting to an Access Point” (p. 18)</p>	<p>Use WPS</p>  <p>If the wireless access point is WPS-compatible, connection to the device can be made using the WPS feature.</p> <p>→ See “Connecting Using WPS” (p. 20)</p>	 <p>Search for the device and connect to it using your computer's wireless connections feature.</p> <p>→ See “Connecting to Another Device with One-to-One Connection” (p. 21)</p>

! IMPORTANT

- The scanner can be shared with multiple computers on the same network via the access point, although only one can connect to the scanner at a time.
- When using a Wi-Fi connection, scanning is slower than with the USB connection.

Connecting Using the Wireless Settings of the Computer

Use the WA10 Wireless Connection Tool to automatically acquire the required network information from the wireless settings of the computer connected to the wireless LAN access point, and connect the device to the same network.

⚠ CAUTION

- If the access point is using security settings (such as MAC address filtering), change the settings to allow connection to this device.
- To ensure good Wi-Fi communications, perform this procedure with the device initially located close to the access point.

1 If the device is powered on, turn it off.

Turning off the scanner also turns off the device.

2 Enable the wireless LAN function of the computer.

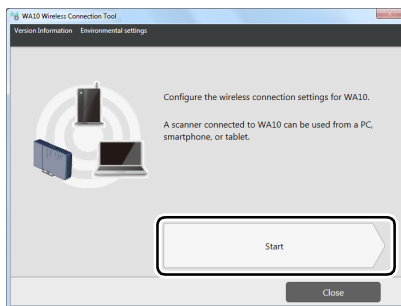
For details, see “Enabling the wireless LAN function of the computer” (p. 11).

This step is not necessary if the wireless LAN function is already enabled. Skip to step 3.

3 Run the WA10 Wireless Connection Tool.

On the software setup disc, execute WA10WifiConnectionTool.exe (p. 10).

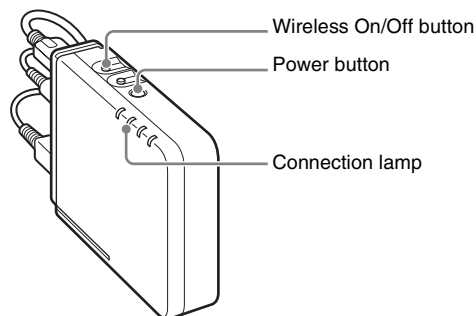
4 Click [Start].



5 Hold the Wireless On/Off button while turning the device on to start it up in AP mode.

Turning on the scanner also turns on the device.

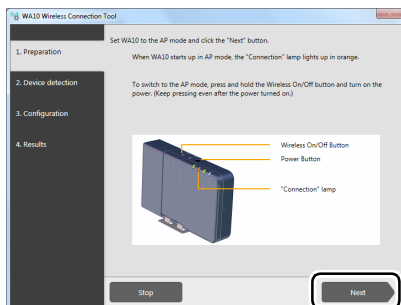
Hold the Wireless On/Off button until the Connection lamp lights orange.



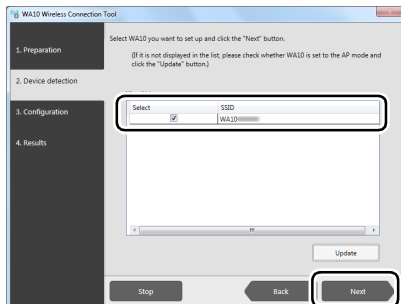
⚠ CAUTION

The device's factory default setting is AP mode.

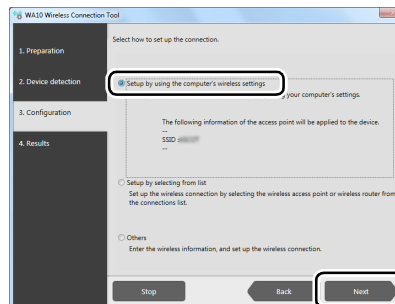
6 Click [Next].



7 Select the device to configure, and click [Next].



8 Select [Setup by using the computer's wireless settings], and click [Next].



The connection is established.

When successfully connected, "Success" is displayed on the result screen. This completes configuration.

Hint

When normal connection fails, "Failed" is displayed on the result screen. To reconfigure, click [Return to main screen] and retry the operation from the beginning.

Selecting and Connecting to a Destination Access Point

Using the WA10 Wireless Connection Tool, select the access point from the destination list, and connect this device to the network.

⚠ CAUTION

- If the access point is using security settings (such as MAC address filtering), change the settings to allow connection to this device.
- To ensure good Wi-Fi communications, perform this procedure with the device initially located close to the access point.

1 If the device is powered on, turn it off.

Turning off the scanner also turns off the device.

2 Enable the wireless LAN function of the computer.

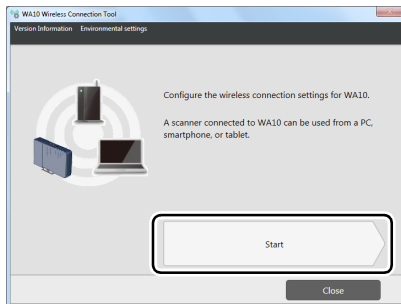
For details, see “Enabling the wireless LAN function of the computer” (p. 11).

This step is not necessary if the wireless LAN function is already enabled. Skip to step 3.

3 Run the WA10 Wireless Connection Tool.

On the software setup disc, execute WA10WifiConnectionTool.exe (p. 10).

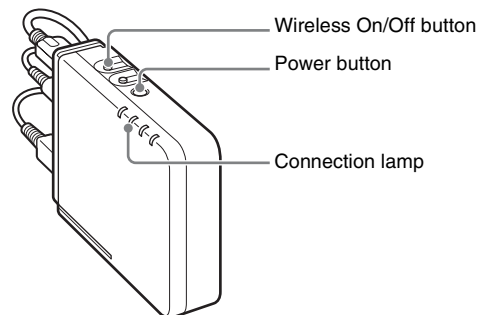
4 Click [Start].



5 Hold the Wireless On/Off button while turning the device on to start it up in AP mode.

Turning on the scanner also turns on the device.

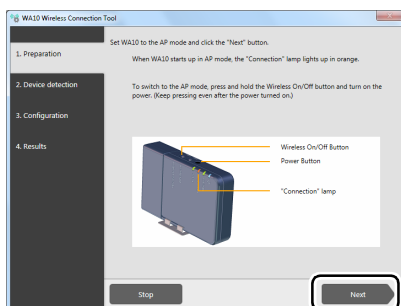
Hold the Wireless On/Off button until the Connection lamp lights orange.



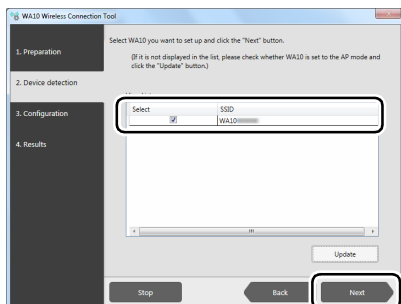
⚠ CAUTION

The device's factory default setting is AP mode.

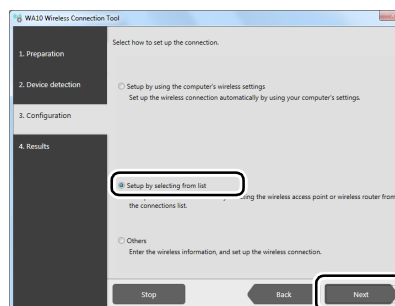
6 Click [Next].



7 Select the device to configure, and click [Next].

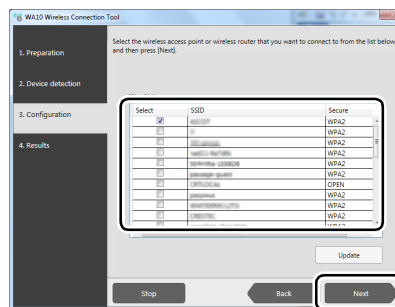


8 Select [Setup by selecting from list], and click [Next].

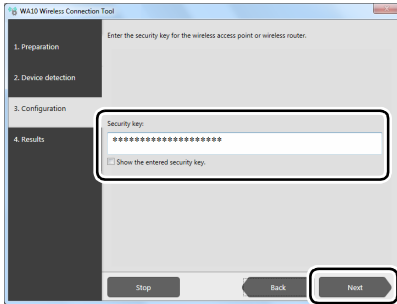


A list of access points detected by the computer is displayed.

9 From the list, select the access point to connect to, and click [Next].



10 Enter the security key for the access point, and click [Next].



The connection is established.
When successfully connected, “Success” is displayed on the result screen. This completes configuration.



Hint

When normal connection fails, “Failed” is displayed on the result screen. To reconfigure, click [Return to main screen] and retry the operation from the beginning.

Specifying and Connecting to an Access Point

Using the WA10 Wireless Connection Tool, specify the access point for connection, then connect this device to the network.

⚠ CAUTION

- If the access point is using security settings (such as MAC address filtering), change the settings to allow connection to this device.
- To ensure good Wi-Fi communications, perform this procedure with the device initially located close to the access point.

1 If the device is powered on, turn it off.

Turning off the scanner also turns off the device.

2 Enable the wireless LAN function of the computer.

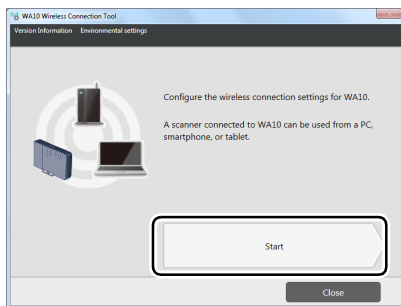
For details, see “Enabling the wireless LAN function of the computer” (p. 11).

This step is not necessary if the wireless LAN function is already enabled. Skip to step 3.

3 Run the WA10 Wireless Connection Tool.

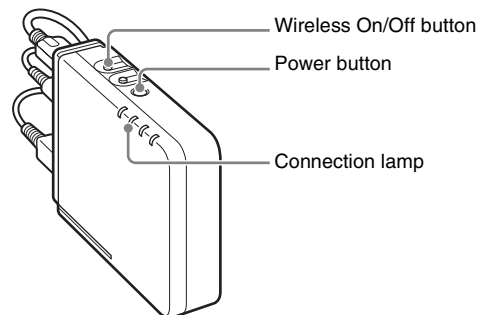
On the software setup disc, execute WA10WifiConnectionTool.exe (p. 10).

4 Click [Start].



5 Hold the Wireless On/Off button while turning the device on to start it up in AP mode.

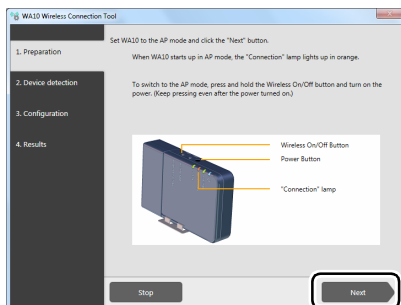
Turning on the scanner also turns on the device. Hold the Wireless On/Off button until the Connection lamp lights orange.



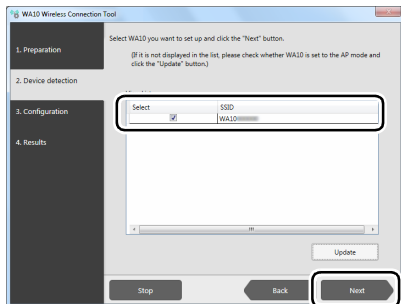
⚠ CAUTION

The device's factory default setting is AP mode.

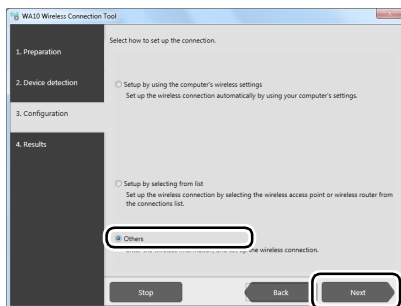
6 Click [Next].



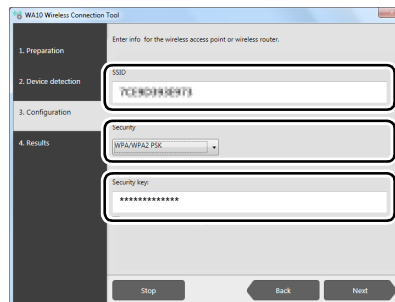
7 Select the device to configure, and click [Next].



8 Select [Others], and click [Next].



9 Enter the information for the access point to be connected.



- ① Enter the SSID.
- ② Select the type of security.
- ③ Enter the security key.

10 Click [Next].

The connection is established.

When successfully connected, "Success" is displayed on the result screen. This completes configuration.



Hint

When normal connection fails, "Failed" is displayed on the result screen. To reconfigure, click [Return to main screen] and retry the operation from the beginning.

Connecting Using WPS

Using WPS, this device can connect to an existing wireless network having a WPS-equipped access point.

⚠ CAUTION

- Even a WPS-equipped access point may have WPS disabled. Ensure WPS is enabled.
- If the access point is using security settings (such as MAC address filtering), change the settings to allow connection to this device.
- To ensure good Wi-Fi communications, perform this procedure with the device initially located close to the access point.

1 If the device is powered on, turn it off.

Turning off the scanner also turns off the device.

2 Enable the wireless LAN function of the computer.

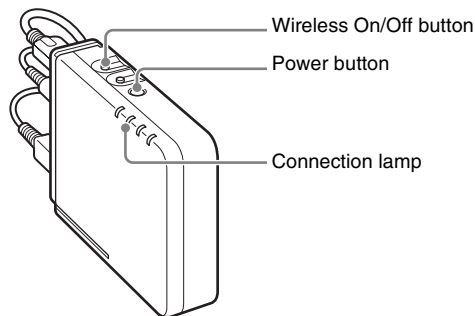
For details, see “Enabling the wireless LAN function of the computer” (p. 11).

This step is not necessary if the wireless LAN function is already enabled. Skip to step 3.

3 Hold the Wireless On/Off button while turning the device on to start it up in AP mode.

Turning on the scanner also turns on the device.

Hold the Wireless On/Off button until the Connection lamp lights orange.



⚠ CAUTION

The device's factory default setting is AP mode.

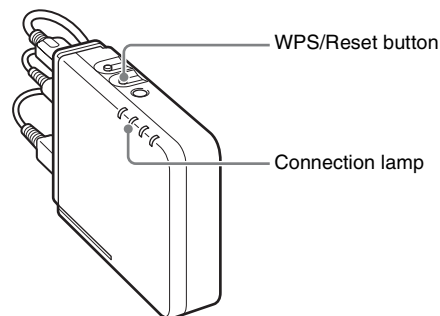
4 Press the WPS button on the access point to activate the connection-waiting state.

See the instructions for your access point.

⚠ CAUTION

This device cannot connect if the connection-waiting state is activated on multiple access points at the same time.

5 Hold this device's WPS/Reset button until the Connection lamp blinks green (about five seconds).



The device communicates with the waiting access point to acquire and automatically configure the required Wi-Fi settings. When the settings are configured, the Connection lamp lights steadily (green).

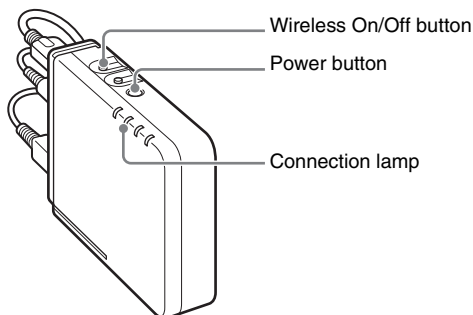
⚠ CAUTION

If a WPS error occurs and connection to the access point fails, the Connection lamp blinks red.

Connecting to Another Device with One-to-One Connection

This procedure establishes a one-to-one connection between this device and a computer or smart device equipped with wireless LAN capability.


- 1 If the device is powered on, turn it off.**
Turning off the scanner also turns off the device.
- 2 Check the SSID of this device.**
The SSID is printed on the label on the side of the device.
- 3 Enable the wireless LAN function of the computer.**
For details, see “Enabling the wireless LAN function of the computer” (p. 11).
This step is not necessary if the wireless LAN function is already enabled. Skip to step 4.
- 4 Hold the Wireless On/Off button while turning the device on to start it up in AP mode.**
Turning on the scanner also turns on the device.
Hold the Wireless On/Off button until the Connection lamp lights orange.

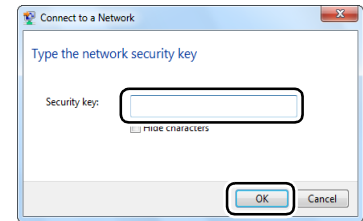
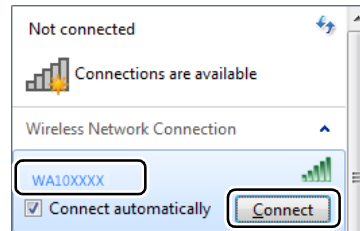
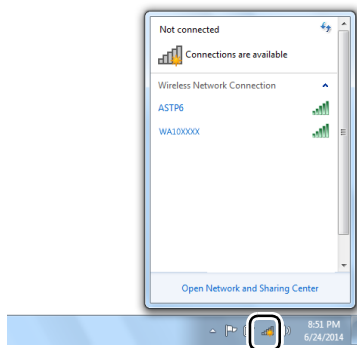


⚠ CAUTION

The device's factory default setting is AP mode.

5 Search for the wireless network, and establish Wi-Fi connection with the device.

- ① Click the  icon in the taskbar to display a list of available wireless networks.
- ② Select the SSID from step 2 in the list, then click [Connect].
- ③ Enter the security key shown on the label on the side of the device, then click [OK].



Connecting to the Wired Network

The device's factory default setting is AP mode. Switching the device to wired LAN mode acquires an IP address from the DHCP server. If the network to which the device will connect includes a DHCP server, the device will be usable simply by connecting to that network. You can check whether the device is connected to the network properly and ready for use by performing the following and starting the Driver Setting Tool.

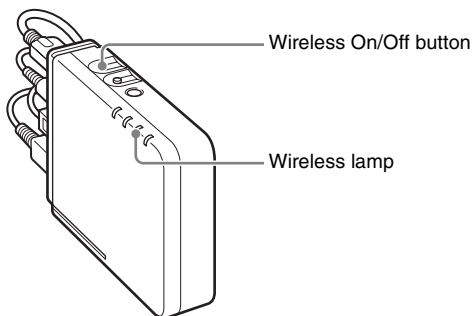


Hint

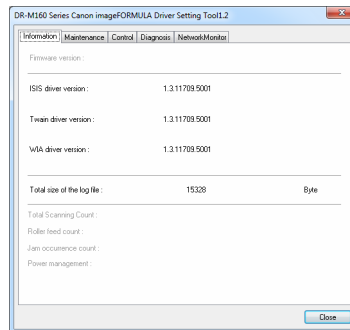
This section describes operations for when the DR-M160II is being used. When using a different model, replace any instance of the model name with that of the model you are using.

- 1 Hold the **Wireless On/Off** button for five seconds.

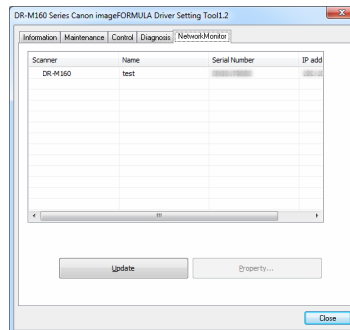
Operation switches to wired LAN mode, and the Wireless lamp turns off.



- 2 Click **[All Programs] — [Canon <scanner name>] — [Driver Setting Tool]** in the start menu.
Driver Setting Tool starts.

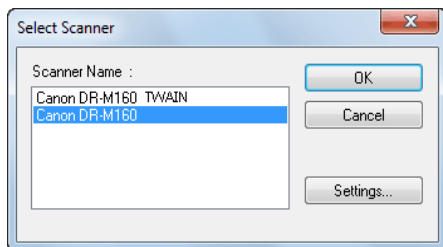


- 3** Click the [NetworkMonitor] tab.



4 Check that the scanner appears in the list.

5 Select the scanner in your application.



Specifying a Static IP Address for the Device

If a static IP address needs to be specified for the device, such as when using it as a wireless base station (access point), or on a network that does not include a DHCP server, perform the following procedure.

1 Connect this device to another device with one-to-one connection.

For details, see “Connecting to Another Device with One-to-One Connection” (p. 21).

2 Start the web browser, and access the “<http://192.168.0.10/>” URL.

The device’s web page opens, and the login screen is displayed.

3 Specify the IP address for the device in the [Network Setting] screen of the web menu.

For details, see “Using the Web Menu” (p. 37).

Device Setting to Specify a Static IP Address

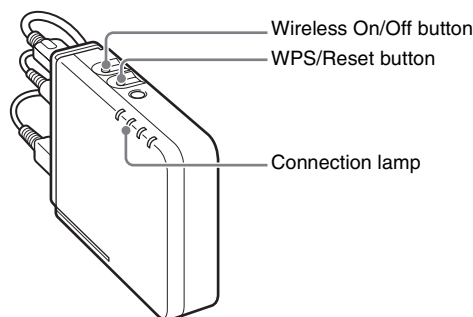
Configure the settings as follows.

1 Hold the Wireless On/Off button for five seconds.

Operation switches to wired LAN mode, and the Wireless lamp turns off.

2 Hold the Wireless On/Off button and the WPS/Reset button for five seconds.

The device’s DHCP setting will be disabled, and the Connection lamp lights orange.



CAUTION

This operation is only possible when wireless settings are not configured on the device.

3 Start the web browser, and access the “<http://192.168.0.10/>” URL.

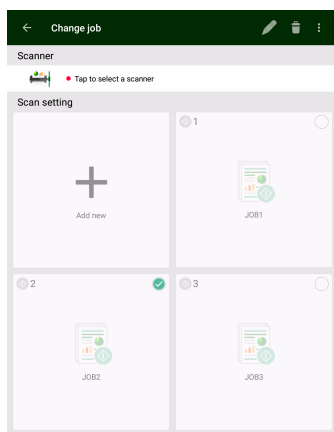
The device’s web page opens, and the login screen is displayed.

4 Specify the IP address for the device in the [Network Setting] screen of the web menu.

For details, see “Using the Web Menu” (p. 37).

Scanning with the CaptureOnTouch Job Tool from a Smart Device

The CaptureOnTouch Job Tool is an application for smart devices (such as smart phones and tablet devices) for controlling scan operations via this device (WA10).



The CaptureOnTouch Job Tool for smart devices provides the following scanning methods.

Job Scanning from the App

Tap a job icon in the CaptureOnTouch Job Tool to scan according to registered scan job settings.

Scanning with Scanner Start Button

You can copy a job registered in the CaptureOnTouch Job Tool to the scanner, then run that job by pressing the scanner's start button.

Job Scanning from a PC

When there is one or more computer on the same network, you can use the CaptureOnTouch Job Tool to select and execute jobs registered by CaptureOnTouch on each computer.



CAUTION

CaptureOnTouch Job Tool compatibility requires CaptureOnTouch version 4.2 or later.

Preparation Before Scanning

Install the CaptureOnTouch Job Tool on your smart device, connect the WA10 to a computer, and connect your smart device to the network.

1 Install the CaptureOnTouch Job Tool application on your smart device.

- For iOS devices, download the CaptureOnTouch Job Tool from the App Store and install it.
- For Android devices, download the CaptureOnTouch Job Tool from Google Play and install it.

2 Connect the WA10 to a Wi-Fi or wired network.

For details, see “About Wi-Fi Connections” (p. 10), “Connecting to the Wired Network” (p. 23).



CAUTION

For a Wi-Fi connection, connect the WA10 to the wireless base unit (access point). You cannot use the CaptureOnTouch Job Tool if the WA10 is connected one-to-one with a computer.

3 Connect your smart device to the same network as this device and the computer.

Granting Access Permission

When saving scanned data in a specific location, a screen asking for permission to access the smart device is displayed. You can save scanned data if you grant access permission. If you do not grant access permission, you cannot save the scanned data. You can change granting/denial of access permission by the following procedure.

CAUTION

The operating procedure may differ depending on OS version and terminal type.

Android devices

- 1 Tap [Settings].**
The [Settings] screen appears.
- 2 Tap [Apps].**
The [Apps] screen appears.
- 3 Tap [COTJT].**
The [App info] screen appears.
- 4 Tap [Permissions].**

iOS devices

- 1 Tap [Settings].**
The [Settings] screen appears.
- 2 Tap [COTJT].**
The access permission setting screen is displayed.
- 3 Tap [Photos], and select [Add Photos Only] or [Never].**

Job Scanning from the App


You can register a job in the CaptureOnTouch Job Tool and execute scanning according to the job's scan settings. Scanned data is saved in a shared folder on the specified computer or smart device.

1 Start the CaptureOnTouch Job Tool.


The [Scan from app job] screen appears.

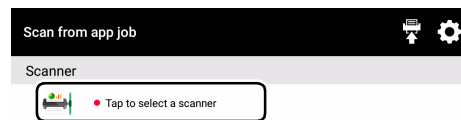


Hint

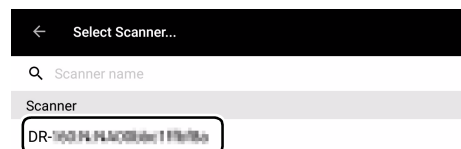
You can change the screen displayed at startup by tapping [>] and selecting [Initial screen setting].

2 Select the scanner.

- ① Tap [].

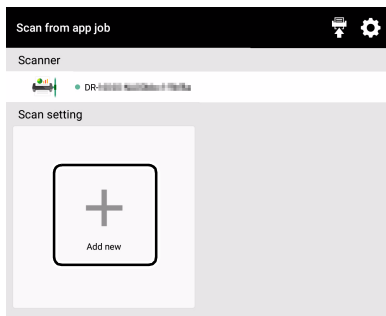


- ② Select the scanner on the [Select Scanner] screen.

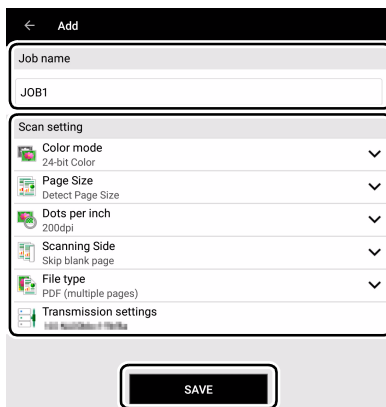


3 Register the job.

① Tap [Add new].



② On the [Add] screen, set the [Job name] and [Scan setting], then tap [SAVE].



⚠ CAUTION

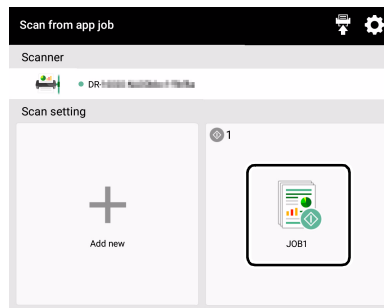
- In [Transmission settings] under [Scan setting], select either [Shared Folder] or [In (name of smart device)] as the destination for the scanned data. When [Shared Folder] is selected, be sure to specify the shared folder in which the scanned data is to be saved.
- To scan A3-size documents on the DR-M1060, set [Page Size] to [Detect Page Size].

💡 Hint

You can register multiple jobs. Up to 99 jobs can be registered.

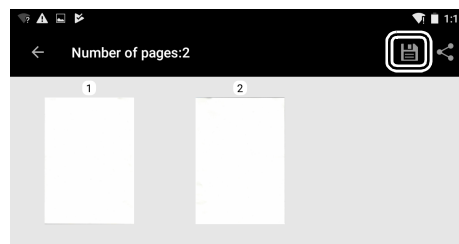
4 Tap the registered job's icon.

Scanning is executed and the scanned data is saved in the shared folder of the specified computer.



5 Tap [📄] to save the scanned data in the smart device.

Scanned data is saved in the smart device.



💡 Hint

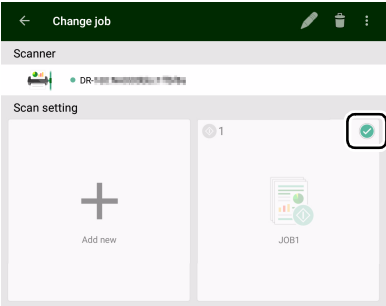
By clicking [📄], you can send scanned data as an e-mail attachment or save it to another app.

Editing job settings

You can edit the settings of registered jobs.

- 1

Press and hold the icon of the job you want to edit.
[✔] appears to indicate the job is editable.



Hint

To cancel editing, tap the job icon again or tap [H] – [Deselect].

- 2

Tap [✔].
The [Edit] screen appears.

- 3

Change the settings in [Job name] and [Scan setting], and tap [SAVE].
The settings are saved.

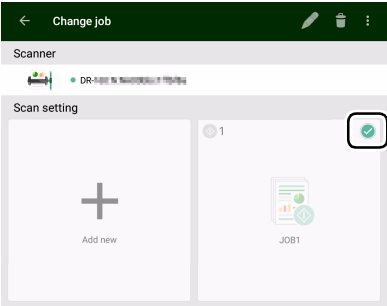


Deleting jobs

You can delete registered jobs.

- 1

Press and hold the icon of a job you want to delete.
[✔] appears to indicate it is ready to be deleted.



Hint

- To cancel the selected state, tap the selected job icon.

- By tapping [H] – [Select all] or [Deselect], you can select all jobs or cancel the selected state.

2 Tap [H].

A confirmation message appears.

3 Tap [OK].

The selected job(s) is deleted.

Scanning with Scanner Start Button

You can copy a job registered in the CaptureOnTouch Job Tool to the scanner, then scan according to those scan job settings by pressing the scanner's start button.

In this scanning method, since the WA10 controls the scanner, the smart device is not needed to execute scanning.

1 Start the CaptureOnTouch Job Tool.

The [Scan from app job] screen appears.

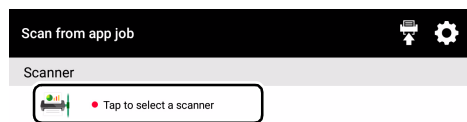


Hint

You can change the screen displayed at startup by tapping [⚙] and selecting [Initial screen setting].

2 Select the scanner.

① Tap [🖨].



② Select the scanner on the [Select Scanner] screen.



3 Tap [🖨], or tap [⚙] — [Copy job registration settings].



4 Enter the administrator password.

Enter the same password as for the Web menu. For details, see "Displaying the Web Menu of This Device" (p. 37).

5 Tap [OK].

All registered jobs are registered in the scanner at once.

⚠ CAUTION

The number of jobs that can be copied depends on the scanner.

6 Select the job number on the scanner and press the start button.

Scanning executes according to the scan settings of the selected job number.

During scanning, the power light of the device blinks blue. It lights steadily blue when scanning and data transmission are completed.

⚠ CAUTION

- If the scanner does not detect the document (there is no document in the feeder) when scanning starts, the Connection lamp lights orange.
- If data cannot be sent, such as because of an invalid destination, a transmission error occurs and the Connection lamp lights red.
- If you copy jobs registered in the CaptureOnTouch Job Tool to the scanner, you cannot use the favorite settings assigned by CaptureOnTouch to the job buttons on the scanner itself. If you want to use CaptureOnTouch favorite settings, first delete from the scanner all jobs copied from the CaptureOnTouch Job Tool.

To Delete Jobs Copied to the Scanner

Jobs copied to the scanner can be deleted.

1 Delete the job(s) from the CaptureOnTouch Job Tool.

For details, see “Deleting jobs” (p. 28).

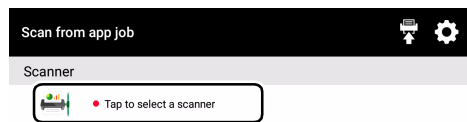


Hint

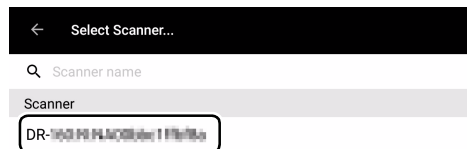
To delete all jobs copied to the scanner, delete all jobs from the CaptureOnTouch Job Tool.

2 Select the scanner.

① Tap [].



② Select the scanner on the [Select Scanner] screen.



3 Tap [], or tap [] — [Copy job registration settings].



4 Enter the administrator password.

Enter the same password as for the Web menu. For details, see “Displaying the Web Menu of This Device” (p. 37).

5 Tap [OK].

Jobs deleted from the CaptureOnTouch Job Tool are deleted from the scanner.

Job Scanning from a PC

When there is one or more computer on the same network, you can use the CaptureOnTouch Job Tool to select and execute jobs registered by CaptureOnTouch on each computer.



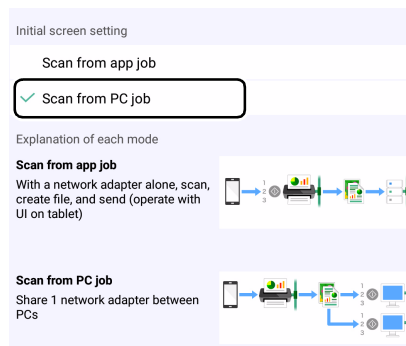
CAUTION

Scanning cannot be executed with this operation if a job registered in CaptureOnTouch Job Tool has been copied to the scanner. All jobs from the CaptureOnTouch Job Tool registered in the scanner must first be deleted. For details, see “To Delete Jobs Copied to the Scanner” (p. 30).

1 Start the CaptureOnTouch Job Tool.

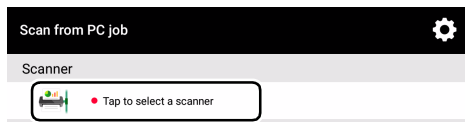
The [Scan from app job] screen appears.

2 Tap [Scan from PC job] in [] — [Initial screen setting].



3 Select the scanner.

① Tap [🖨️].

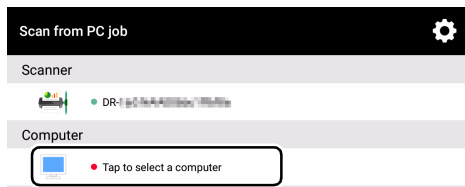


② Select the scanner on the [Select Scanner] screen.

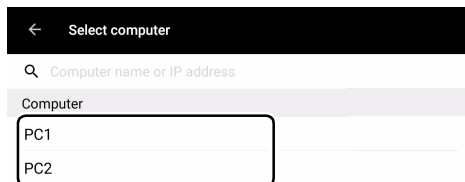


4 Select a computer.

① Tap [💻].



② On the [Select computer] screen, select a computer.

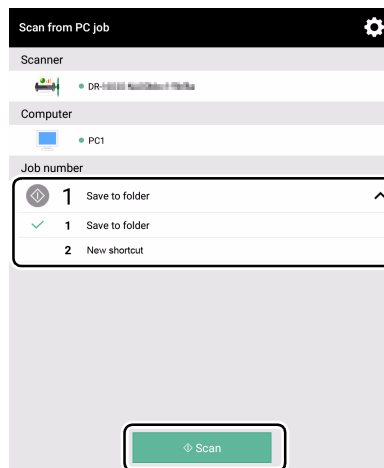


⚠ CAUTION

Start CaptureOnTouch on the computer.
The computer cannot be selected unless CaptureOnTouch is running.

5 Tap the job number to execute, and tap [Scan].

Scanning executes according to the scan settings of the selected job number.



💡 Hint

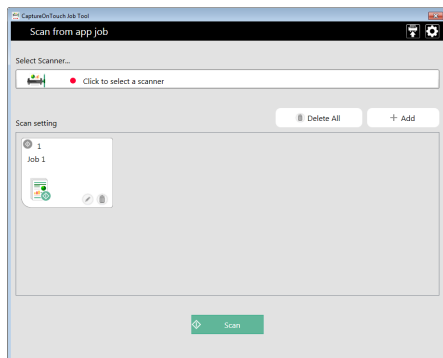
- Using the CaptureOnTouch favorite on the computer selected in the above figure, the job is registered as shown below.



- Only the favorites that are registered to the scanner's job buttons using CaptureOnTouch can be operated from CaptureOnTouch Job Tool.

Scanning from a Computer with the CaptureOnTouch Job Tool

CaptureOnTouch Job Tool for Windows is an application to control scanning via the WA10 by computer operation.



The CaptureOnTouch Job Tool for Windows provides the following scanning methods.

Job Scanning with the App

Select a job icon in the CaptureOnTouch Job Tool and click [Scan] to scan according to the scan settings of the registered job.

Scanning with Scanner Start Button

By copying a job registered in the CaptureOnTouch Job Tool to the scanner, you can then execute the job by pressing the scanner's start button.

CAUTION

The CaptureOnTouch Job Tool for Windows requires that .NET Framework 4.5.2 or higher be installed.

Preparation Before Scanning

Install the CaptureOnTouch Job Tool on the computer, and connect it and the WA10 to the network.

- 1 Install the CaptureOnTouch Job Tool application on the computer.

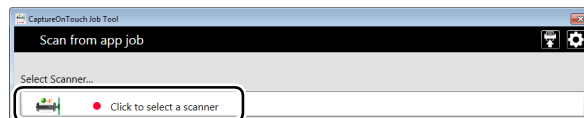
- 2 Connect the WA10 to a Wi-Fi or wired network.
For details, see “About Wi-Fi Connections” (p. 10), “Connecting to the Wired Network” (p. 23).

Job Scanning with the App

You can register a job in the CaptureOnTouch Job Tool and execute scanning according to the job's scan settings. Scanned data is saved in a shared folder on the specified computer.

- 1 Start the CaptureOnTouch Job Tool.
The [Scan from app job] screen appears.

- 2 Select the scanner.
① Click [Select Scanner...].

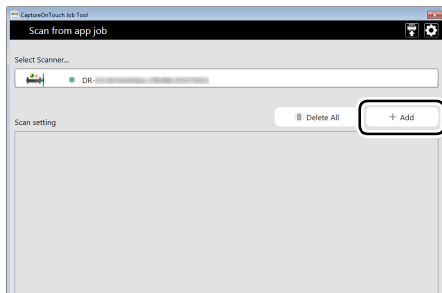


- ② Select the scanner on the [Select Scanner] screen.

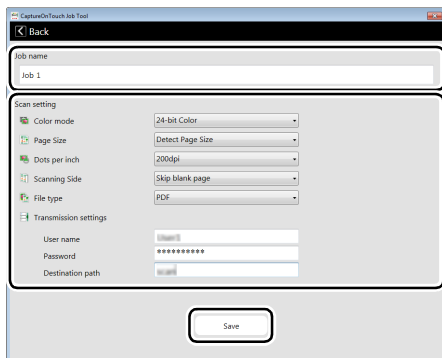


3 Register the job.

① Click [Add].



② On the Add screen, set the [Job name] and [Scan setting], then click [Save].



⚠ CAUTION

- In [Transmission settings] under [Scan setting], be sure to specify the shared folder in which to save the scanned data.
- To scan A3-size documents on the DR-M1060, set [Page Size] to [Detect Page Size].

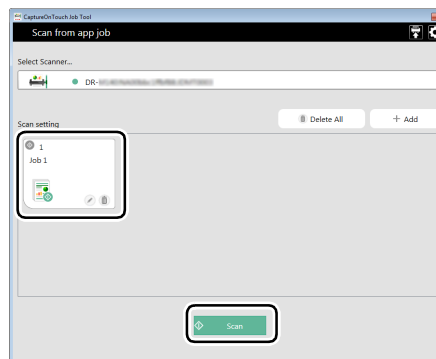


Hint

You can register multiple jobs. Up to 99 jobs can be registered.

4 Click the registered job's icon, then click [Scan].

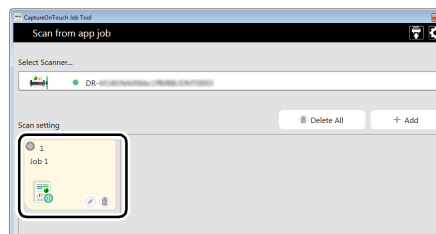
Scanning is executed and the scanned data is saved in the shared folder of the specified computer.



Editing job settings

You can edit the settings of registered jobs.

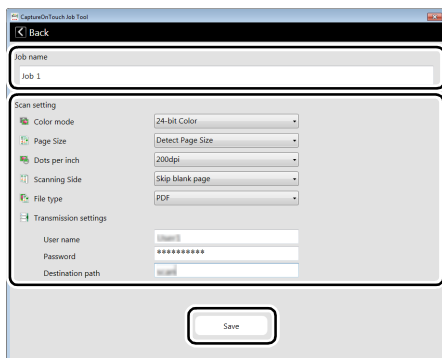
1 Click the icon of the job you want to edit.



2 Click [Edit].

The [Edit] screen appears.

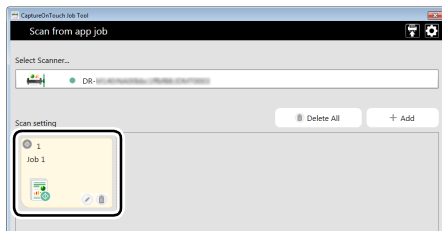
-
- 3 Change the settings in [Job name] and [Scan setting], and click [Save].**
The settings are saved.



Deleting jobs

You can delete registered jobs.

-
- 1 Click the icon of the job you want to delete.**

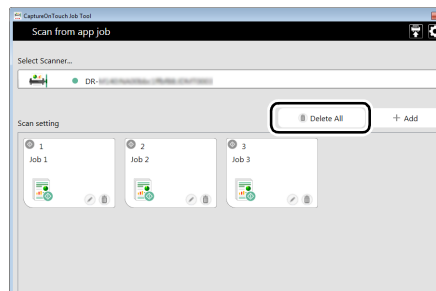


-
- 2 Click [🗑️].**
The selected job(s) is deleted.

Deleting all jobs

You can delete all registered jobs at once.

-
- 1 Click [Delete All].**
A confirmation message appears.



-
- 2 Click [OK].**
All jobs are deleted.

Scanning with Scanner Start Button

You can copy a job registered in the CaptureOnTouch Job Tool to the scanner, then scan according to those scan job settings by pressing the scanner's start button.

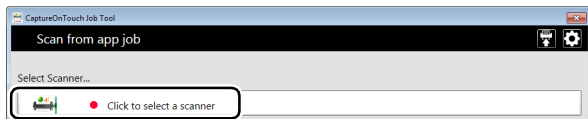
In this scanning method, since the WA10 controls the scanner, the computer is not needed to execute scanning.

1 Start the CaptureOnTouch Job Tool.

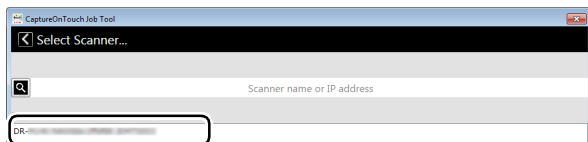
The [Scan from app job] screen appears.

2 Select the scanner.

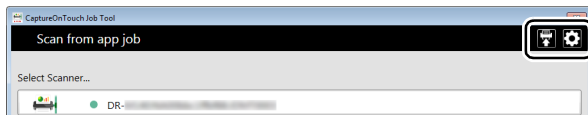
① Click [].



② Select the scanner on the [Select Scanner] screen.



3 Click [], or click [] — [Copy job registration settings].



4 Enter the administrator password.

Enter the same password as for the Web menu. For details, see “Displaying the Web Menu of This Device” (p. 37).

5 Tap [OK].

All registered jobs are registered in the scanner at once.

⚠ CAUTION

The number of jobs that can be copied depends on the scanner.

6 Select the job number on the scanner and press the start button.

Scanning executes according to the scan settings of the selected job number.

During scanning, the power light of the device blinks blue. It lights steadily blue when scanning and data transmission are completed.

⚠ CAUTION

- If the scanner does not detect the document (there is no document in the feeder) when scanning starts, the Connection lamp lights orange.
- If data cannot be sent, such as because of an invalid destination, a transmission error occurs and the Connection lamp lights red.
- If you copy a job registered in the CaptureOnTouch Job Tool to the scanner, you cannot use the favorite settings assigned to the job buttons on the scanner with CaptureOnTouch. To use the CaptureOnTouch favorite settings, first delete any jobs copied to the scanner with the CaptureOnTouch Job Tool.

To Delete Jobs Copied to the Scanner

Jobs copied to the scanner can be deleted.

1 Delete the job(s) from the CaptureOnTouch Job Tool.

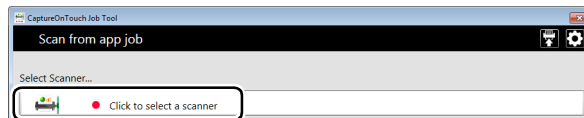
For details, see “Deleting jobs” (p. 28), “Deleting all jobs” (p. 34).

💡 Hint

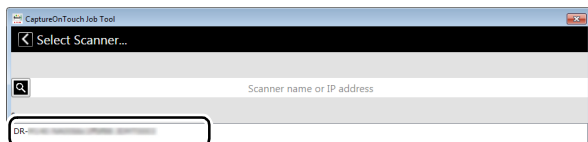
To delete all jobs copied to the scanner, delete all jobs from the CaptureOnTouch Job Tool.



2 Select the scanner.

① Click [].



② Select the scanner on the [Select Scanner] screen.



3 Click , or click  — [Copy job registration settings].



4 Enter the administrator password.

Enter the same password as for the Web menu. For details, see “Displaying the Web Menu of This Device” (p. 37).

5 Click [OK].

Jobs deleted from the CaptureOnTouch Job Tool are deleted from the scanner.

Using the Web Menu

Displaying the Web Menu of This Device

Since this device has the HTTP protocol, advanced settings can be configured or changed via a web browser.

! IMPORTANT

- We recommend the following web browsers:

Windows	Microsoft Internet Explorer 11 or higher
	Microsoft Edge 38 or higher
	Firefox 3.0.0 or higher
	Chrome 11.0 or higher

- In the following instructions, Internet Explorer 11 and Windows 7 are used as example. Display may vary depending on the web browser.

💡 Hint

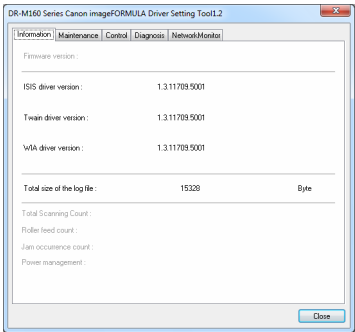
- The web configuration page complies with HTTP 1.0 (RFC1945) / HTML 3.0.
- The operating status of the connected scanner is automatically refreshed every 30 sec.

Displaying the Web Menu of This Device

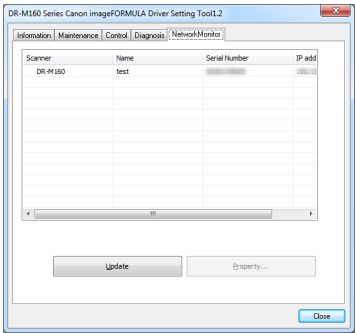
💡 Hint

This section describes operations for when the DR-M160II is being used. When using a different model, replace any instance of the model name with that of the model you are using.

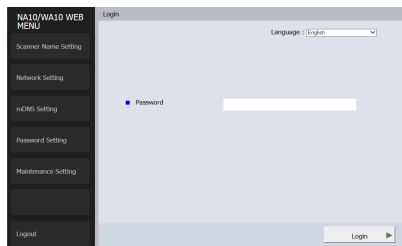
- 1 Click **[All Programs]** — **[Canon <scanner name>]** — **[Driver Setting Tool]** in the start menu. Driver Setting Tool starts.



- 2 Click the **[NetworkMonitor]** tab.



- 3 Select the scanner from the list, and click [Property].**
The device's web page opens, and the login screen is displayed.



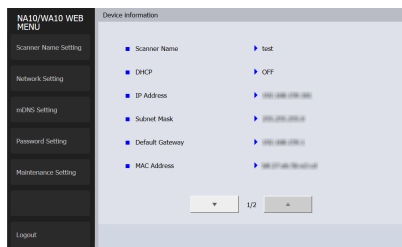
- 4 Select a display language for the web page in the [Language] list box.**

- 5 Enter the administrator password in [Password].**
When opening the web menu for the first time, you will proceed to the next step without password entry, as an administrator password is not configured under the device's factory default settings. If you changed the administrator password previously via the web menu, enter that new password.

⚠ CAUTION

To ensure security, we recommend changing the administrator password from its factory default setting. You can change the password on the [Password Setting] screen of the web menu (p. 41).

- 6 Click [Login].**
The [Device information] screen appears.



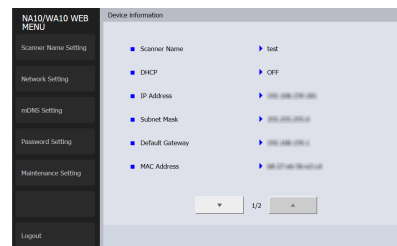
Specifying the Device's IP Address to Display the Web Menu

Enter the device's IP address in the address bar of the web browser, and press the Enter key.

Example: Enter 192.168.0.10 (displayed as "http://192.168.0.10/")

The device's web page opens, and the login screen is displayed.

The [Device information] screen appears immediately after you log into the web menu, allowing you to view the current settings.



Pages of the Web Menu

When you click the items on the left menu, the following pages are displayed.

Scanner Name Setting	Displays the scanner name.
Network Setting	Configures the network settings.
mDNS Setting	Configures the mDNS settings.
Password Setting	Configures the administrator password used to log into the web menu.
Maintenance Setting	Restores the factory default settings and updates the firmware.



Hint

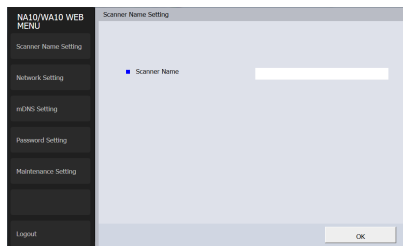
To return to the [Device information] screen from one of its setting screens, click the model name of the device that appears at the top of the left menu.

Web Menu Settings

This section describes the setting items on each of the pages of the web menu.

Scanner Name Setting

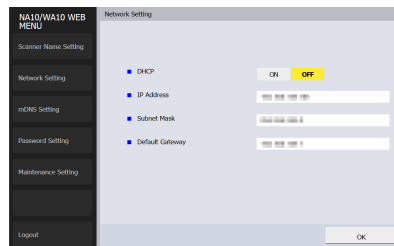
If you click [Scanner Name Setting] on the left menu, the page below is displayed.



Item	Description
Scanner Name	Displays the device name of the connected scanner.

Network Setting

If you click [Network Setting] on the left menu, the page below is displayed.



Item	Description	Default Value
DHCP	Enable ([ON]) / disable ([OFF]) the DHCP protocol. To assign an IP address using DHCP, the DHCP server must be running in your subnetwork.	ON
IP Address	Set the IP address of the device. If DHCP is enabled, the IP address obtained from it will be applied. The value must be four decimal numbers separated by dots and expressed in the [xxx.xxx.xxx.xxx] format.	192.168.0.10
Subnet Mask	Set the subnet mask of the device. If DHCP is enabled, the subnet mask obtained from it will be applied. The value must be four decimal numbers separated by dots and expressed in the [xxx.xxx.xxx.xxx] format.	255.255.255.0

Item	Description	Default Value
Default Gateway	Set the gateway IP address of the device. If DHCP is enabled, the default gateway obtained from it will be applied. The value must be four decimal numbers separated by dots and expressed in the [xxx.xxx.xxx.xxx] format. Also, the gateway needs to be running in the same subnetwork as the device.	192.168.0.1

mDNS Setting

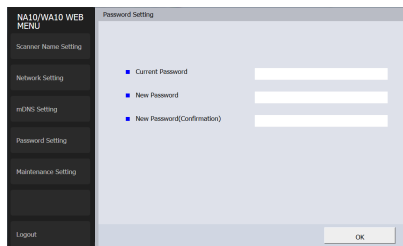
If you click [mDNS Setting] on the left menu, the page below is displayed.



Item	Description	Default Value
mDNS	Enable/disable multicast DNS. This setting allows scanning applications to search for and automatically connect to this device and its connected scanner. Enable the setting under normal circumstances. When the setting is disabled, you must manually specify the scanner using the device's IP address to scan from a scanning application.	ON

Password Setting

If you click [Password Setting] on the left menu, the page below is displayed.

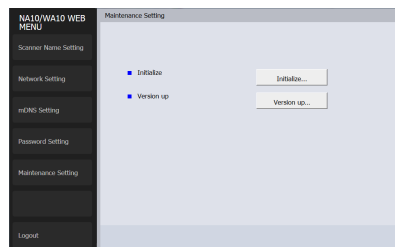


Item	Description	Default Value
Current Password	Enter the current password.	None
New Password	Set the administrator password (up to 32 characters). This password is used for authentication when configuring settings in a web browser.	None
New Password (Confirmation)	Used to confirm the password.	None

Maintenance Setting

If you click [Maintenance Setting] on the left menu, the page below is displayed.

In this page, you can restore the device's factory default settings and update the firmware.



Item	Description
Initialize	Restore the device's factory default settings. If you click [Initialize] and then [Yes] in the screen that appears, the device's factory default settings are restored, and the device restarts.
Version up	Update the device's firmware. Click [Version up], and then specify the firmware file in the screen that appears.

Visit the Canon support page for instructions on out to obtain the firmware.

<http://www.canon-elec.co.jp/products/ims/softwareDownload/index.html>

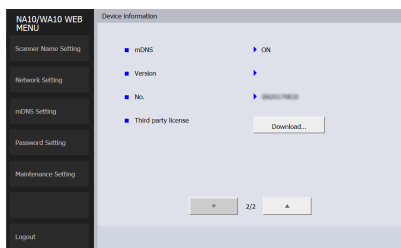
Software License

The device includes software that is licensed under GNU GENERAL PUBLIC LICENSE (GPL), GNU LESSER GENERAL PUBLIC LICENSE (LGPL), or proprietary licenses. You can view the original text of a software license via the device's web menu.

1 Follow the steps in “Displaying the Web Menu of This Device” (p. 37), and display the [Device information] screen.

2 Click [▼] to display the next page of the [Device information] screen.

3 Click [Download] for [Third party license].



Troubleshooting



Hint

See the instructions for the access point you are using.

Item	Interface	Resolution
Cannot scan.	Wired LAN/Wi-Fi	If you have more than one scanner of the same model, did you select one that you did not intend to use with the software or in operation? Double check the connected scanner.
The scanner does not appear in the list on the scanner selection screen.	Wired LAN/Wi-Fi	<ul style="list-style-type: none"> • Confirm that the scanner is compatible with the device. • Confirm that the device and scanner are connected via USB cable. • Confirm that the IP address is configured properly. • If a DHCP server does not exist on the network, you need to use a static IP address. For details, see “Specifying a Static IP Address for the Device” (p. 24). • You cannot connect if the connected segment is different. Please set it to the same segment as your computer. For details, please contact your network administrator. • Connection may not be possible due to security software settings. For details, please contact your network administrator. • You cannot connect if the same device exists on multiple networks and you specify a device with a different IP address. Please double check the IP address of the device to be used. • Confirm that the version of the installed scanner driver is compatible with this device
	Wired LAN	<ul style="list-style-type: none"> • Confirm that the network cable is connected properly. • Confirm that the device is not in Wi-Fi mode.
	Wi-Fi	<ul style="list-style-type: none"> • Confirm that the device is not in wired LAN mode. • Is the device located too far from the access point? Connection is not possible if the distance is too far. For details, please contact your network administrator. • Are there obstacles such as walls and furniture between the access point and the device? Reposition the devices or move them closer together. For details, please contact your network administrator.
The scanner automatically turns itself off, making the connection unavailable.	Wired LAN/Wi-Fi	When the scanner has its Auto Power Off function enabled, it automatically turns itself off after a certain period of inactivity, regardless of the connection. Turn the scanner back on, and as necessary, disable the Auto Power Off function as described in the scanner’s manual.
I want to reset to the factory default settings.	Wired LAN/Wi-Fi	To return the device to factory default state, hold down the WPS/Reset button while turning on the device, and continue holding it until the device’s Connection lamp lights red. (Depending on the connection environment, it may take up to 2 minutes for the device to start up.) Initialize the device in the web menu. For details, see “Maintenance Setting” (p. 41).

Item	Interface	Resolution
Cannot connect to an access point.	Wi-Fi	<ul style="list-style-type: none"> • Confirm that the access point is operating correctly. • Confirm that the device is in Station mode. Turn both this device and the access point off and back on, and attempt the Wi-Fi connection again. • Electromagnetic emissions from cordless phones, microwave ovens, refrigerators, Bluetooth devices and other appliances can interfere with Wi-Fi signals. Keep this device and its access point away from such appliances. • When an access point's stealth function is enabled, it cannot be detected during Wi-Fi setup. Disable the stealth function when selecting and connecting to the access point at the connection destination. • When the access point's MAC filtering function is enabled, the MAC address of this device must be registered.
Automatic connection to the network is not possible.	Wired LAN	If your network environment supports DHCP, consult your network administrator. If your network environment does not support DHCP, configure the IP address manually.
The network disconnects during use.	Wired LAN	<ul style="list-style-type: none"> • Check the condition of the cable connection. • Check the status of network traffic. When a heavy load is placed on the network, processing takes time and timeouts may occur. Wait for awhile and then reconnect. If the situation does not improve please contact your network administrator.
After setup with the WA10 Wireless Connection Tool, attempting to operate the scanner produces an error.	Wi-Fi	Immediately after setup with the WA10 Wireless Connection Tool, the computer's network connection may be unstable. Please wait for a while or restart the computer.
The scanner is not detected after setup with the WA10 Wireless Connection Tool.		

Specifications

Main Unit

Type	Network Adapter
Scanner connection interface	USB 2.0 Hi-Speed (Type A)
Network interface	IEEE802.3 10Base-T/100Base-TX/ 1000Base-T
Basic wireless LAN specifications	
Wireless standard	IEEE802.11b/g/n (2.4 GHz only)
Frequency	2.4 GHz band
Transmission method	DSSS, DBPSK, CCK, 16-QAM, 64-QAM
Data rate*	IEEE802.11b: Up to 11 Mbps IEEE802.11g: Up to 54 Mbps IEEE802.11n: Up to 72.2 Mbps
Security	WPA-PSK (TKIP/AES), WPA2-PSK (TKIP/AES), WEP, open
Easy setting	WPS
Dimensions	116 mm x 93.6 mm x 28.8 mm (4.57" x 3.69" x 1.13") (W x D x H; without cord cover)
Mass	Approx. 179 g (0.4 lb) (main body only)
Power supply	AC adapter (use the adapter supplied with the scanner)
Power consumption	Max. during operation: 7.0 W; During standby: 4.5 W; During power off: 0.1 W or less
Operating environment	Temperature: 10 to 35 degrees C (50 to 95 degrees F) Humidity: 20 to 85% (RH)

* Varies according to environmental conditions.

CE — Declaration of Conformity



This equipment complies with the essential requirements of the European Union directive 2014/53/EU.

An original copy of the Declaration of Conformity can be acquired by request from the following addresses.

English	Hereby, Canon Electronics Inc. declares that this equipment is in compliance with Directive 2014/53/EU. The full text of the EU declaration of conformity is available at the following internet address: http://www.canon-europe.com/ce-documentation	Greek	Με την παρούσα, η Canon Electronics Inc. δηλώνει ότι ο παρών εξοπλισμός συμμορφώνεται με την Οδηγία 2014/53/ΕΕ. Το πλήρες κείμενο της δήλωσης συμμόρφωσης της ΕΕ διατίθεται στην ακόλουθη διεύθυνση στο διαδίκτυο: http://www.canon-europe.com/ce-documentation
Czech	Tímto společnost Canon Electronics Inc. prohlašuje, že toto zařízení je v souladu se směrnicí 2014/53/EU. Úplné znění EU prohlášení o shodě je k dispozici na této internetové adrese: http://www.canon-europe.com/ce-documentation	French	Le soussigné, Canon Electronics Inc., déclare que le présent équipement est conforme à la Directive 2014/53/UE. Le texte complet de la déclaration UE de conformité est disponible à l'adresse internet suivante : http://www.canon-europe.com/ce-documentation
Danish	Hermed erklærer Canon Electronics Inc., at dette udstyr er i overensstemmelse med direktiv 2014/53/EU. EU-overensstemmelseserklæringens fulde tekst kan findes på følgende internetadresse: http://www.canon-europe.com/ce-documentation	Italian	Con la presente, Canon Electronics Inc. dichiara che questa apparecchiatura è conforme alla direttiva 2014/53/UE. Il testo completo della dichiarazione di conformità UE è disponibile al seguente indirizzo Internet: http://www.canon-europe.com/ce-documentation
German	Hiermit erklärt Canon Electronics Inc, dass diese Anlage der Richtlinie 2014/53/EU entspricht. Der vollständige Text der EU-Konformitätserklärung ist unter der folgenden Internetadresse verfügbar: http://www.canon-europe.com/ce-documentation	Latvian	Canon Electronics Inc. ar šo deklarē, ka šī iekārta atbilst Direktīvai 2014/53/ES. Pilns ES atbilstības deklarācijas teksts ir pieejams šādā interneta vietnē: http://www.canon-europe.com/ce-documentation
Estonian	Käesolevaga deklareerib Canon Electronics Inc., et käesolev seade vastab direktiivi 2014/53/EL nõuetele. ELi vastavusdeklaratsiooni täielik tekst on kättesaadav järgmisel internetiaadressil: http://www.canon-europe.com/ce-documentation	Lithuanian	Šiuo dokumentu „Canon Electronics Inc.“ patvirtina, kad ši įranga atitinka direktyvą 2014/53/ES. Visas ES atitikties deklaracijos teksto prieinamas šiuo interneto adresu: http://www.canon-europe.com/ce-documentation
Spanish	Por la presente, Canon Electronics Inc. declara que este equipo es conforme con la Directiva 2014/53/UE. El texto completo de la declaración UE de conformidad está disponible en la dirección de Internet siguiente: http://www.canon-europe.com/ce-documentation	Dutch	Hierbij verklaar ik, Canon Electronics Inc., dat deze apparatuur conform is met Richtlijn 2014/53/EU. De volledige tekst van de EU-conformiteitsverklaring kan worden geraadpleegd op het volgende internetadres: http://www.canon-europe.com/ce-documentation

Maltese	B'dan, Canon Electronics Inc., qed tiddikjara li dan it-tip ta' tagħmir huwa konformi mad-Direttiva 2014/53/UE. It-test kollu tad-dikjarazzjoni ta' konformità tal-UE huwa disponibbli f'dan is-sit fuq l-internet: http://www.canon-europe.com/ce-documentation	Swedish	Härmed försäkrar Canon Electronics Inc. att denna utrustning överensstämmer med direktiv 2014/53/EU. Den fullständiga texten till EU-försäkran om överensstämmelse finns tillgänglig på följande webbadress: http://www.canon-europe.com/ce-documentation
Hungarian	A Canon Electronics Inc. igazolja, hogy ez a berendezés megfelel a 2014/53/EU irányelvnek. Az EU-megfelelőségi nyilatkozat teljes szövege elérhető a következő internetes címen: http://www.canon-europe.com/ce-documentation	Romanian	Prin prezenta, Canon Electronics Inc. declară că acest echipament este în conformitate cu Directiva 2014/53/UE. Textul integral al declarației UE de conformitate este disponibil la următoarea adresă internet: http://www.canon-europe.com/ce-documentation
Polish	Canon Electronics Inc. niniejszym oświadczam, że niniejsze urządzenie jest zgodne z dyrektywą 2014/53/UE. Pełny tekst deklaracji zgodności UE jest dostępny pod następującym adresem internetowym: http://www.canon-europe.com/ce-documentation	Bulgarian	С настоящото Canon Electronics Inc. декларира, че това съоръжение е в съответствие с Директива 2014/53/ЕС. Цялостният текст на ЕС декларацията за съответствие може да се намери на следния интернет адрес: http://www.canon-europe.com/ce-documentation
Portuguese	Por este meio, a Canon Electronics Inc. declara que o presente equipamento está em conformidade com a Diretiva 2014/53/UE. O texto integral da declaração de conformidade da UE está disponível no seguinte endereço de Internet: http://www.canon-europe.com/ce-documentation	Croatian	Canon Electronics Inc. ovime izjavljuje da je oprema u skladu s Direktivom 2014/53/EU. Cjeloviti tekst EU izjave o sukladnosti dostupan je na sljedećoj internetskoj adresi: http://www.canon-europe.com/ce-documentation
Slovene	Canon Electronics Inc. potrjuje, da je ta oprema v skladu z Direktivo 2014/53/EU. Celotno besedilo izjave EU o skladnosti je na voljo na naslednjem spletnem naslovu: http://www.canon-europe.com/ce-documentation	Irish	Dearbhaíonn Canon Electronics Inc., leis seo, go bhfuil an trealamh seo i gcomhlíonadh leis an Treoir 2014/53/AE. Tá an téacs iomlán de Dhearbhú Comhréireachta AE ar fáil ag seoladh an láithreáin ghréasáin mar seo a leanas: http://www.canon-europe.com/ce-documentation
Slovak	Spoločnosť Canon Electronics Inc. týmto vyhlasuje, že toto zariadenie je v súlade so smernicou 2014/53/EÚ. Úplné znenie EÚ vyhlásenia o zhode je k dispozícii na tejto internetovej adrese: http://www.canon-europe.com/ce-documentation	Norwegian	Herved erklærer Canon Electronics Inc. at dette utstyret er i overensstemmelse med direktiv 2014/53/EU. Den fulle teksten til EUs samsvarserklæring er tilgjengelig på følgende Internett-adresse: http://www.canon-europe.com/ce-documentation
Finnish	Canon Electronics Inc. vakuuttaa, että tämä laite on direktiivin 2014/53/EU mukainen. EU-vaatimustenmukaisuusvakuutuksen täysimittainen teksti on saatavilla seuraavassa internetosoitteessa: http://www.canon-europe.com/ce-documentation	Icelandic	Hér með lýsir Canon Electronics Inc því yfir að þessi búnaður er í samræmi við tilskipun 2014/53/ESB. Allur texti ESB-samræmisýfirlýsingar er í boði á eftirfarandi veffangi: http://www.canon-europe.com/ce-documentation

Safety-related markings on the machine
Marquages de sécurité sur la machine
Marcature di sicurezza sulla macchina
Sicherheitshinweise auf der Maschine
Marcas de la máquina relacionadas con la seguridad
Veiligheidsmarkeringen op de machine
Makine üzerindeki güvenlik işaretleri



[English]	Switch (On)
[Français]	Commutateur (Marche)
[Italiano]	Interruttore (On)
[Deutsch]	Schalter (Ein)
[Español]	Interruptor (encendido)
[Nederlands]	Schakelaar (On)
[Türkçe]	Anahtar (Açık)

Power on
Sous tension
Alimentazione presente
Eingeschaltet
Máquina encendida
Aan
Güç açık



[English]	Switch (Off)
[Français]	Commutateur (Arrêt)
[Italiano]	Interruttore (Off)
[Deutsch]	Schalter (Aus)
[Español]	Interruptor (apagado)
[Nederlands]	Schakelaar (Off)
[Türkçe]	Anahtar (Kapalı)

Power off (no standby current)
Hors tension (pas de courant de veille)
Alimentazione assente (nessuna corrente di standby)
Ausgeschaltet (ohne Ruhestromaufnahme)
Máquina apagada (sin corriente en espera)
Uit (geen stand-byverbruik)
Güç kapalı (bekleme akımı yok)



[English]	Switch (Standby)
[Français]	Commutateur (Veille)
[Italiano]	Interruttore (Standby)
[Deutsch]	Schalter (Standby)
[Español]	Interruptor (en espera)
[Nederlands]	Schakelaar (Standby)
[Türkçe]	Anahtar (Bekleme)

Power on/off (standby current on)
Sous/hors tension (courant de veille activé)
Alimentazione on/off (corrente di standby presente)
Ein- und Ausschalten (mit Ruhestromaufnahme)
Máquina apagada/encendida (con corriente en espera)
Aan-uit (stand-byverbruik aan)
Güç açık/kapalı (bekleme akımı açık)






[English]	Switch (Push-On/Push-Off)	Power on/off (no standby current)
[Français]	Commutateur (Appuyer pour mettre en marche/Appuyer pour arrêter)	Sous/hors tension (pas de courant de veille)
[Italiano]	Interruttore a pulsante bistabile (On/Off)	Alimentazione on/off (nessuna corrente di standby)
[Deutsch]	Schalter (Ein- und Ausschalten durch Drücken)	Ein- und Ausschalten (ohne Ruhestromaufnahme)
[Español]	Interruptor (pulsado para encendido/apagado)	Encendido/apagado (sin corriente en espera)
[Nederlands]	Schakelaar (Push-On/Push-Off)	Aan-uit (geen stand-byverbruik)
[Türkçe]	Anahtar (Bas-Aç/Bas-Kapa)	Güç açık/kapalı (bekleme akımı yok)



[English]	Heat hazard	Heat hazard
[Français]	Danger de chaleur	Danger de chaleur
[Italiano]	Pericolo: temperature elevate	Pericolo: temperature elevate
[Deutsch]	Überhitzungsgefahr	Überhitzungsgefahr
[Español]	Peligro de calentamiento	Peligro de calentamiento
[Nederlands]	Verbrandingsgevaar	Verbrandingsgevaar
[Türkçe]	Isı tehlikesi	Isı tehlikesi



[English]	Class II equipment	Indicates this is Class II equipment
[Français]	Équipement de classe II	Indique qu'il s'agit d'un équipement de classe II
[Italiano]	Apparecchio classe II	Indica che questo è un apparecchio di classe II
[Deutsch]	Gerät der Schutzklasse II	Gibt an, dass das Gerät der Schutzklasse II entspricht
[Español]	Equipo de clase II	Indica que se trata de un equipo de clase II
[Nederlands]	Klassell-apparatuur	Geeft aan dat deze apparatuur in Klasse II hoort
[Türkçe]	Sınıf II ekipman	Bunun Sınıf II ekipman olduğunu gösterir

	[English]	DC symbol	Indicates direct current
	[Français]	Symbole CC	Indique qu'il s'agit de courant continu
	[Italiano]	Simbolo corrente continua (C.C.)	Indica la corrente continua
	[Deutsch]	Gleichstrom-Symbol	Kennzeichnet Gleichstrom
	[Español]	Símbolo CC	Indica corriente continua
	[Nederlands]	DC-pictogram	Geeft gelijkstroom aan
	[Türkçe]	DC sembolü	Düz akımı gösterir
	[English]	DC polarity	Indicates the power plug polarity
	[Français]	Polarité CC	Indique la polarité de la fiche d'alimentation
	[Italiano]	Polarità C.C.	Indica la polarità dello spinotto di alimentazione
	[Deutsch]	Gleichstrompolarität	Gibt die Polarität des Netzsteckers an
	[Español]	Polaridad de CC	Indica la polaridad del conector de alimentación
	[Nederlands]	DC-polariteit	Geeft de polariteit van de stekker aan
	[Türkçe]	DC polaritesi	Fiş polaritesini gösterir
	[English]	Electrostatic precaution	Avoid applying static electricity to the machine
	[Français]	Précaution électrostatique	Évitez de soumettre cette machine à de l'électricité statique
	[Italiano]	Protezione dalle cariche elettrostatiche	Evitare di applicare cariche elettrostatiche alla macchina
	[Deutsch]	Warnung vor elektrostatischer Aufladung	Elektrostatische Aufladung der Maschine vermeiden
	[Español]	Precaución electroestática	No aplique electricidad electroestática
	[Nederlands]	Elektrostatische voorzorgen	Voorkom statische elektriciteit op de machine
	[Türkçe]	Elektrostatik önlemi	Makineye statik elektrik vermeyin



CANON ELECTRONICS INC.

3-5-10 SHIBAKOEN, MINATO-KU, TOKYO 105-0011, JAPAN

CANON U.S.A. INC.

ONE CANON PARK, MELVILLE, NY 11747, U.S.A.

CANON CANADA INC.

8000 MISSISSAUGA ROAD, BRAMPTON, ONTARIO L6Y 5Z7, CANADA

CANON EUROPA N.V.

BOVENKERKERWEG 59, 1185 XB AMSTELVEEN, THE NETHERLANDS

CANON AUSTRALIA PTY. LTD.

BUILDING A, THE PARK ESTATE, 5 TALAVERA ROAD, MACQUARIE PARK, NSW 2113, AUSTRALIA

CANON SINGAPORE PTE. LTD.

1 FUSIONPOLIS PLACE, #15-10, GALAXIS, SINGAPORE 138522

CANON INDIA PVT. LTD

7TH FLOOR, TOWER B DLF CYBER TERRACES DLF PHASE III GURGAON-122002 HARYANA, INDIA