

Compact Photo Printer CP1200 Firmware Update Procedure

Firmware is the basic software that controls the Printer. Using the firmware, the SELPHY printer can perform many operations, such as printing or processing the image. The following is an explanation of how to update your SELPHY printer to the new firmware.

Make sure you have read the precautions and procedures below carefully before using the firmware.

IMPORTANT: Observe the following precautions when updating the firmware

- When updating the firmware, make sure to use the supplied compact power adapter CA-CP200 B.
- Before updating the firmware, initialize the SD (or SDHC/SDXC) card. When you initialize the SD card, any data written on it will be erased. Therefore please be sure to save a copy of any important data on your computer or some other media prior to initializing it.
- While updating firmware, make absolutely sure not to turn the SELPHY printer off or to operate its buttons or controls. Doing so could cause SELPHY printer malfunctions.
- After the firmware update is completed, it is not possible to rebred back to a previous version.
- If the firmware update does not finish normally, or if the SELPHY printer no longer starts normally, please contact Canon Customer Support Help Desk.

Step 1: Preparations

The following items are required for this firmware update. Please have these items ready in advance.

- | | |
|--|---|
| 1. SELPHY Printer: | Compact Photo Printer SELPHY CP1200 |
| 2. Computer: | Computer running either Windows or Mac OS ^(*1) |
| 3. Memory card: | SD memory card or an SDHC/SDXC memory card
(both commercially available) |
| 4. Memory card reader/writer ^(*2) : | Memory card reader/writer (commercially available)
or SD card slot built into the computer |
| 5. Compact power adapter: | The compact power adapter (CA-CP200 B) |
| 6. Firmware update file: | The latest file that can be downloaded from the Web site |

(*1) Windows 10, Windows 8.1, Windows 8, Windows 7 SP1 and Mac OS 10.8~

(*2) If using an SDHC/SDXC memory card, the memory card reader or memory card slot on the computer must support SDHC/SDXC memory cards.

Step 2: Prepare an SD card for the firmware update

We will explain how to use your computer and an SD card reader/writer (or an SD card slot built into the computer) to copy the new firmware to the initialized SD card. Initialize the SD card first.

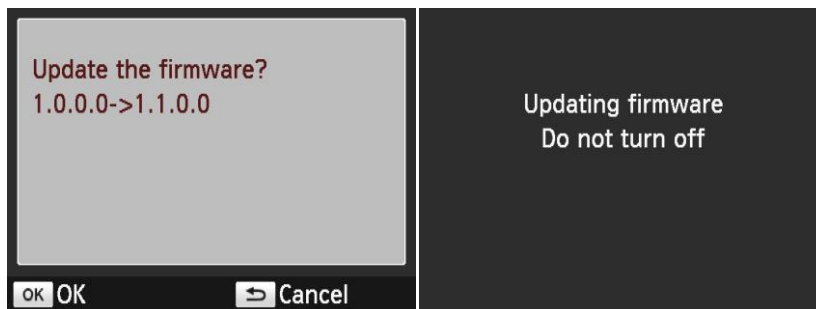
Caution

When you initialize the SD card, all if the data saved on it will erased, so make sure to save any important data on your computer or somewhere else before initializing the SD card. If you perform the firmware update with data remaining on the SD card, it could cause the SELPHY printer to malfunction.

1. Insert the completely initialized SD card into the SD card reader/writer (or the SD card slot on the computer)
2. Copy the firmware update data [CP1200_1100.cnn] to the root directly of the SD card.
 - If the firmware update file is placed in a subfolder of the SD card, the SELPHY printer will not recognize it.
3. Remove the SD card from the card reader/writer.
 - When removing the SD card, be sure to do so as described in the documentation for the computer or the card reader/writer.

Step 3: Update the SELPHY printer to the new firmware

1. Power the SELPHY printer using the compact power adapter to the SELPHY printer.
2. Turn on the SELPHY printer.
3. Insert the SD card to which the firmware update data [CP1200_1100.cnn] was copied in Step 2 into the SELPHY printer when standby screen (displayed SELPHY logo) is displayed.
4. Then “Update the firmware” will be displayed, please confirm the version numbers and push [OK] to start the firmware update.
 - *When you don’t need to update firmware (Printer firmware version is same as the firmware saved in SD card or update firmware version is older than the Printer’s firmware), the indications that “Already has the latest version” will be displayed.
5. After a short while, after the indication “Updating firmware Do not turn off” is displayed, the firmware will be over written with new version and then SELPHY printer will power off automatically.



Caution

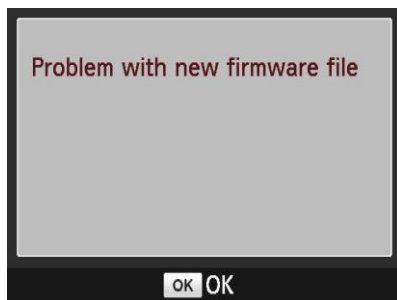
The firmware update takes approximately 1 minute to complete. During this time, please do not turn off the SELPHY printer or operate any of its controls. Doing so could cause SELPHY printer malfunctions.

6. Please power on SELPHY printer again, and insert same SD card again and when the indication “Update the firmware?” is displayed, and push [OK], then “Already has the latest version” is displayed as below, you can confirm the firmware version was updated.



7. Turn off the SELPHY printer, and then remove the SD card.

*When the firmware update file is not copied correctly, the indications will be displayed.



The firmware update is complete.

Caution

After the firmware update is completed, make sure to initialize the SD card that was used to copy the firmware before using the SD card. Also, make sure to delete the firmware you downloaded from your computer.