

**Canon**



# ScanGear CS-U 6.2

# User's Guide

*for CanoScan N670U/N676U/N1240U Color Scanner*



*for Windows*  
*for Macintosh*

**Contents**

**Troubleshooting**

**Glossary**

**Index**

## **Copyright Notice**

Copyright ©2001 Canon Inc.

This manual is copyrighted with all rights reserved. Under the copyright laws, this manual may not be copied, in whole or in part, without written consent of Canon Inc. Under the law, copying includes translating into another language or format.

In this manual, screen shots are taken with Windows Millennium Edition (Me). When you use Windows 98, Windows 2000 Professional or Macintosh, screen designs are slightly different from this manual.

Microsoft and Windows are registered trademarks or trademarks of the Microsoft Corporation in the United States and other countries.  
Macintosh, Power Macintosh, Mac OS and ColorSync are trademarks of Apple Computer, Inc., registered in the U.S. and other countries.  
iMac is a trademark of Apple Computer, Inc.  
Adobe ® and Adobe ® Photoshop are trademarks of Adobe Systems Incorporated.

Canon, and CanoScan are registered trademarks of Canon, Inc.  
ColorGear and ImageTrust are registered trademarks of Canon Inc.  
All other names are trademarks of their respective companies.

<b>Chapter 1 Before You Begin .....</b>	<b>5</b>
Welcome to ScanGear CS-U 6.2 .....	6
System Requirements .....	7
Windows .....	7
Macintosh .....	8
Starting and Closing ScanGear CS-U .....	9
Windows .....	9
Macintosh .....	10
Getting Help in ScanGear CS-U .....	11
Windows .....	11
Macintosh .....	11
 <b>Chapter 2 Simple Mode and Advanced Mode .....</b>	 <b>12</b>
What are the Simple Mode and Advanced Mode? .....	13
Switching Between the Simple and Advanced Modes .....	14
Simple Mode Main Window .....	15
Advanced Mode Main Window .....	16
 <b>Chapter 3 What is on the screen? .....</b>	 <b>18</b>
Main Window .....	19
Toolbar .....	20
Scanning Buttons .....	23
Simple Mode Main Window .....	24
Advanced Mode Main Window .....	30
The Main Sheet .....	30
The Scanner Sheet .....	34
The Tone Sheet .....	40
Contrast/Brightness Sheet .....	43
Gamma Sheet .....	44
Histogram Sheet .....	46
Special Tone Curves Sheet .....	48
Editing a Special Tone Curve Directly .....	49
The Halftone Sheet .....	51

<b>Chapter 4 Scanning an Original .....</b>	<b>52</b>
Preparing for the Scanning Job .....	53
Quick Start .....	54
Previewing and Scanning an Original .....	56
Scanning in the Simple Mode .....	56
Scanning in the Advanced Mode .....	61
 <b>Chapter 5 Multi-Photo Mode .....</b>	<b>65</b>
Multi-Photo Mode .....	66
Operations .....	66
Placing the Photos .....	68
 <b>Chapter 6 Settings in the Windows Control Panel     (Windows only) .....</b>	<b>69</b>
Opening Scanners and Cameras Properties .....	70
General Settings .....	72
Events Settings .....	73
Preferences Settings .....	75
Color Management Settings .....	77
 <b>Chapter 7 Uninstalling ScanGear CS-U .....</b>	<b>78</b>
Uninstalling ScanGear CS-U .....	79
 <b>Chapter 8 Troubleshooting .....</b>	<b>80</b>
Pre-Scan Checklist .....	81
How to Avoid Problems .....	82
Troubleshooting Checklist .....	84
 <b>Glossary .....</b>	<b>90</b>
 <b>Index .....</b>	<b>104</b>
 <b>Customer Support Help Desk .....</b>	<b>109</b>

Contents

Troubleshooting

Glossary

Index

# ***Before You Begin***

Welcome to ScanGear CS-U 6.2

System Requirements

Starting and Closing ScanGear CS-U

Getting Help in ScanGear CS-U

## ***Welcome to ScanGear CS-U 6.2***

Welcome to Canon ScanGear CS-U 6.2.

ScanGear CS-U 6.2 (hereafter referred to as ScanGear CS-U) will provide flexible, efficient image enhancement tools for scanning with your CanoScan N670U/N676U/N1240U Scanner by providing an interface with a variety of software applications.

ScanGear CS-U has a number of powerful features that help you achieve peak performance with your scanner. Using ScanGear CS-U, you can preview and adjust an image before the image is scanned and acquired by the parent software application.

Normally when you start a scanning job, you will see the ScanGear CS-U main window with its toolbar, Preview Area, and tabs.

However, some software applications may not open the ScanGear CS-U main window. When this occurs you cannot use the settings described in this user's guide because the host software application will provide the settings so you can change the image after it is acquired. When a software application uses ScanGear CS-U without opening the ScanGear CS-U main window, this is called the windowless mode.



## System Requirements

The hardware and software listed below is required to use ScanGear CS-U.

### Windows

Computer: IBM PC/AT Compatible with USB port(s) standardly  
OS: Windows 98  
Windows Millenium Edition  
Windows 2000 Professional  
CPU: Pentium 150MHz or greater  
RAM: 64MB or more  
HDD Free Space: Approx. 10MB (When Installation) or more  
Display: 800 x 600 dots  
High Color (16 bit) or greater  
Interface: USB 1.1  
CD-ROM Drive: Necessary



*Note*

- USB Expansion card is not guaranteed.



## Macintosh

Computer: Macintosh with USB port(s) standardly

OS: Mac OS 8.6

Mac OS 9.0

Mac OS 9.1

Mac OS X (Classic Mode only)

CPU: Power PC G3 or greater

RAM: 64MB or more

With Mac OS X 128MB or more

HDD Free Space: Approx. 10MB (When Installation) or more

Display: 800 x 600 dots

32000 colors or greater

Interface: USB 1.1

CD-ROM Drive: Necessary



*Note*

- USB Expansion card is not guaranteed.





## Starting and Closing ScanGear CS-U

ScanGear CS-U is not a stand-alone program that can be started by itself. It is used as a TWAIN driver (Windows) or plug-in (Macintosh). Start the application program first, then start ScanGear CS-U from the program.



*Note*

When starting ScanGear CS-U, confirm that the scanner is correctly connected to the computer.

### Windows

#### Starting


1. Start the TWAIN-compliant application software such as PhotoStudio or Photoshop.

< If you have installed another scanner or a digital camera, select this scanner. >

- a. Click the [File] menu and select [Select Source] or such.
- b. Click to highlight [CanoScan N670U/N676U] or [CanoScan N1240U] and click [Select].

2. Click the [File] menu and select [Acquire] or such.  
ScanGear CS-U will start.

#### Closing

Click the  (close box) in the ScanGear CS-U window.




## **Macintosh**

### *Starting*

1. Start the parent application software such as PhotoStudio or Photoshop.
2. Click the [File] menu and select [Acquire] or such, and [ScanGear CS-U 6.2.0...].  
ScanGear CS-U will start.

### *Closing*

When scanning is completed, the ScanGear CS-U window automatically closes (Macintosh only).

If the “Automatically quit ScanGear CS-U after scanning” (☞p.39) is off, click the  (close box) in the ScanGear CS-U window.

## ***Getting Help in ScanGear CS-U***

### ***Windows***

For information about using ScanGear CS-U, open the on-line Help by clicking the Help button on the toolbar.

Click the Contents or Index tab to see if the topic you are looking for is covered elsewhere in on-line Help.

### ***Macintosh***

For information about using ScanGear CS-U, display the balloon help by clicking the Help button on the toolbar. To close the balloon help, click the Help button again.



Contents

Troubleshooting

Glossary

Index

# *Simple Mode and Advanced Mode*

What are the Simple Mode and Advanced Mode?

Simple Mode Main Window

Advanced Mode Main Window



## ***What are the Simple Mode and Advanced Mode?***

You can run ScanGear CS-U in either of two modes: the Simple Mode and Advanced Mode.

### **Simple Mode**

The Simple Mode, as its name implies, is easy to use and fast. You can set up a scanning job quickly just by selecting from the name that best describes the job you want to execute: Color Photo, Color Photo Fine, B&W Photo, and so on. All you have to do is select one Image Type setting which sets up the scanning job for you automatically. You can accept the settings and start the scanning job, or you can make small adjustments to the settings before you begin. For routine scanning jobs you can create your own Image Types and save them under a name that will listed among the pre-defined selections.

### **Advanced Mode**

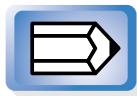
The Advanced Mode presents more options which allow you to set up professional quality scanning jobs. You can use precise settings to select the scanning area in the Preview Area, adjust Color Mode and Resolution, and take advantage of the wide selection of Tone options (adjusting Contrast/ Brightness, Gamma, Histogram, Special Tone Curve, and Threshold).



## Switching Between the Simple and Advanced Modes

You can switch between the Simple and Advanced Modes simply by clicking a button.

- In the Simple Mode main window, click the Advanced Mode button to open the Advanced Mode main window.
- In the Advanced Mode main window, click the Simple Mode button to open the Simple Mode main window.

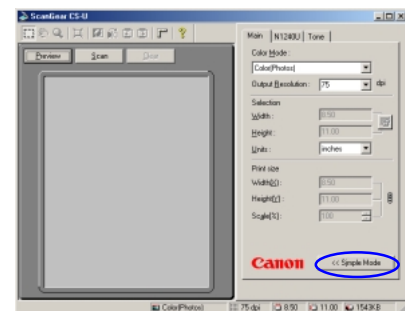
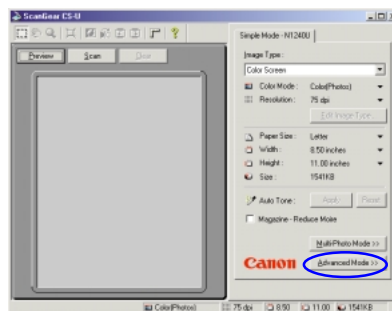
**Note**

If you change the settings in either the Simple Mode or Advanced Mode, the changes will be reflected in the settings of the other mode.

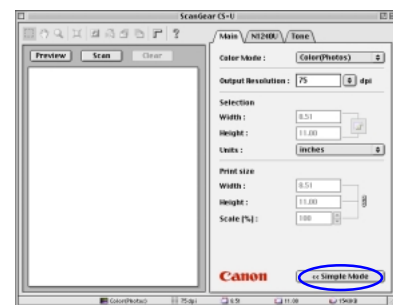
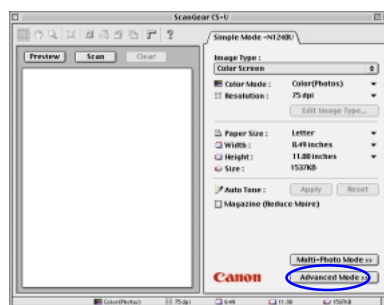
Simple Mode

Advanced Mode

Windows



Macintosh



# Simple Mode and Advanced Mode

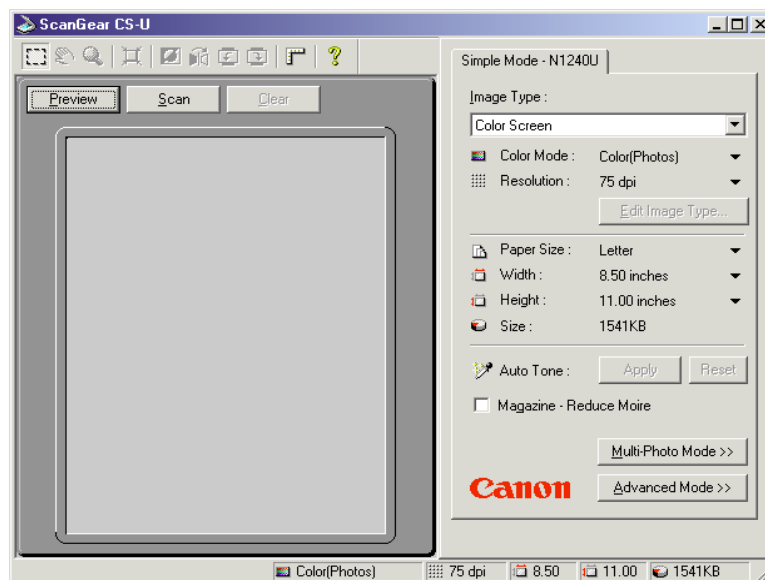
Contents

Troubleshooting

Glossary

Index

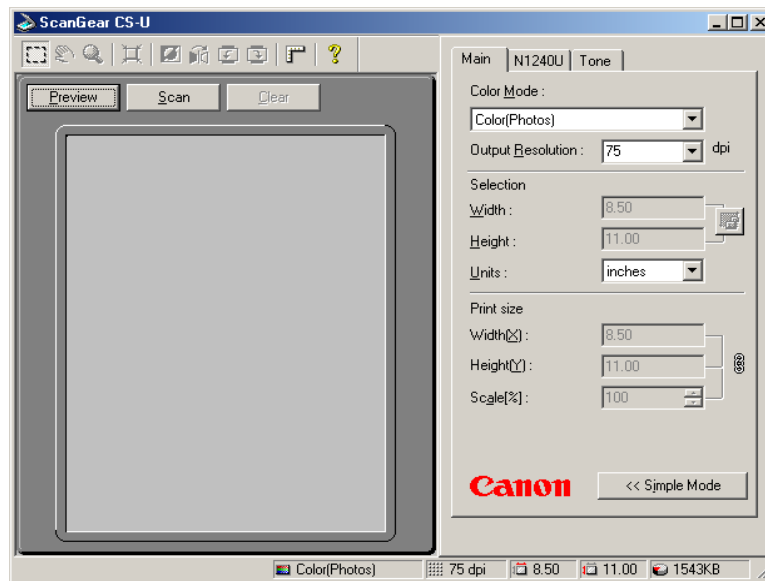
## Simple Mode Main Window



The ScanGear CS-U main window in the Simple Mode has only one sheet, named "Simple Mode" followed by the name of your scanner. Use the Simple Mode sheet settings to select the settings for a scanning job.



## Advanced Mode Main Window



The ScanGear CS-U main window in the Advanced Mode has more sheets to perform the settings for scanning.

In the Advanced Mode click the Main tab, Tone tab (or Halftone tab), or the Scanner tab to open the Main sheet, Tone sheet (or Halftone sheet) or Scanner sheet. Use the settings on each sheet to perform important settings for scanning.

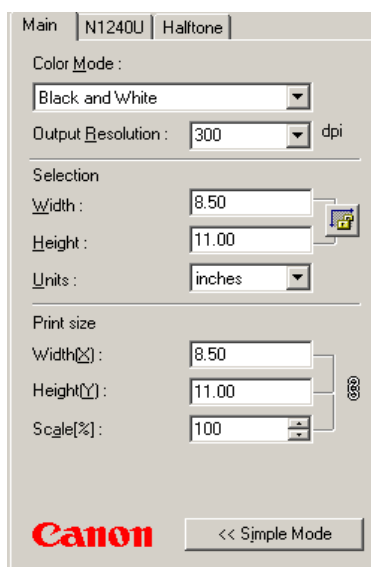


**Note**

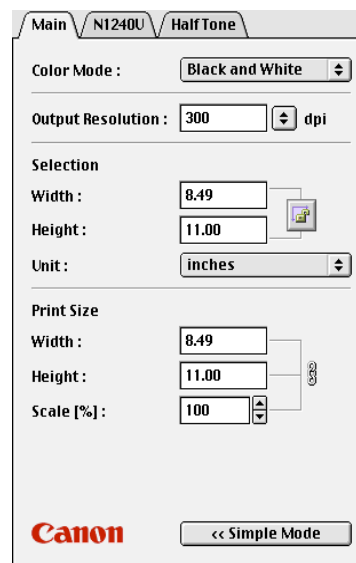
In the Advanced Mode, the name of your scanner (N670U/ N676U or N1240U) is displayed on the tab of the Scanner sheet.



If you select Black and White for the Color Mode on the Main sheet, the Tone tab is replaced with the Halftone tab.



Windows



Macintosh

With Windows, if you select Text Enhanced for the Color Mode on the Main sheet, neither Tone tab nor Halftone tab is displayed.

Contents

Troubleshooting

Glossary

Index

# ***What is on the screen?***

Main Window

Toolbar

Scanning Buttons

Simple Mode Main Window

Advanced Mode Main Window



# What is on the Screen?

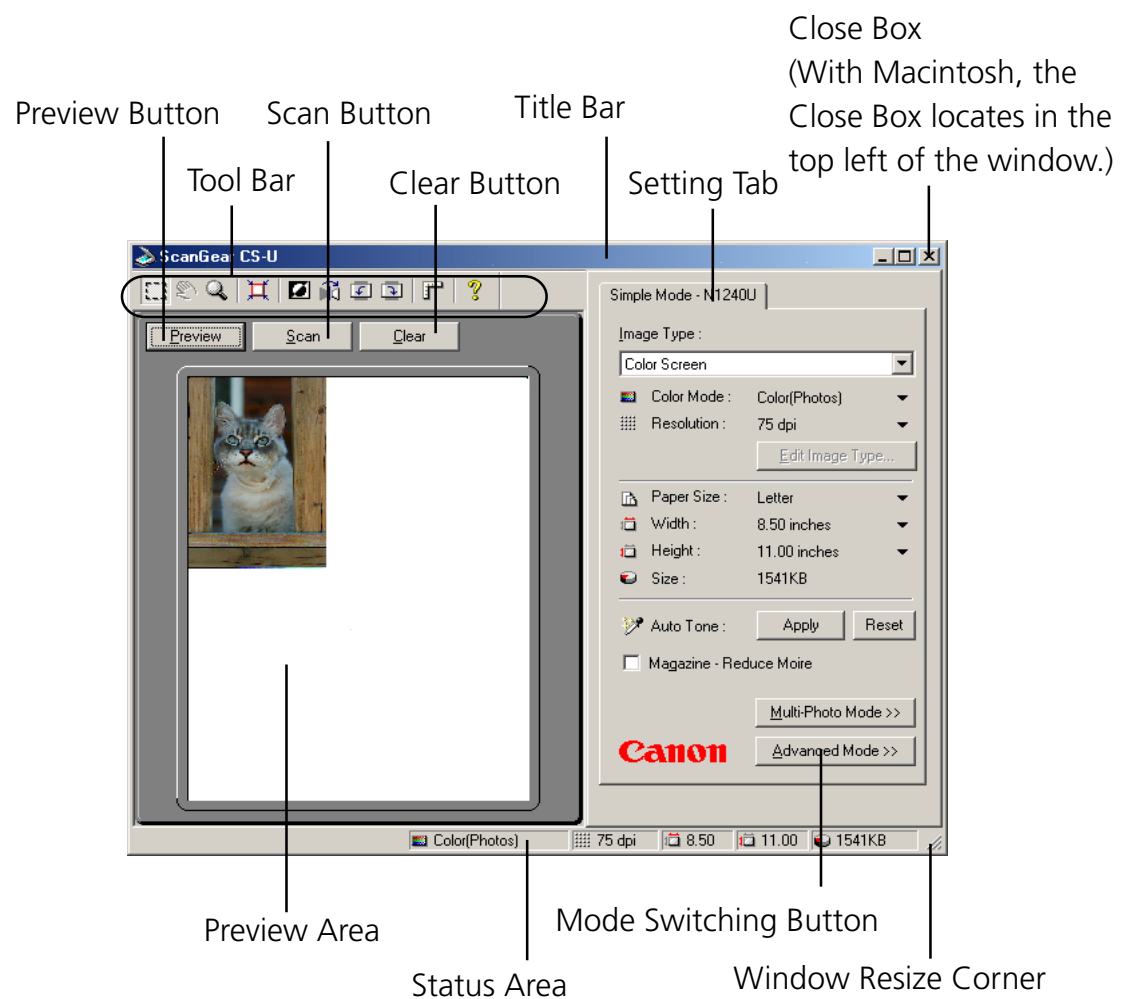
Contents

Troubleshooting

Glossary

Index

## Main Window



# What is on the Screen?

Contents

Troubleshooting

Glossary

Index

## Toolbar

Buttons on the toolbar help you to perform important tasks like, cropping images, moving images, zooming, and so on.



### Crop Button

Click the Crop button and drag the pointer in any direction to draw a rectangle around the area you want to select for scanning. This reduces the time it takes to scan an image because you are pre-scanning or scanning only the necessary section of the image, not the whole area. To un-crop the image simply click outside the cropped area.

### Move Image Button

Use the Move Image button to scroll the image up/down or left/right when the previewed image has been enlarged with the Zoom Tool button and is too large to be viewed all at once. Click the Move Image button and drag the image with the hand image pointer.



*Note*

The Move Image button is not available when the previewed image has not been enlarged and is displayed entirely in the Preview Area.





### **Zoom Tool Button**

Click the Zoom Tool button and then click the left or right mouse button to change the size of the Preview image.

- To increase the magnification of the image, click the Zoom Tool button then click the left mouse button (Windows) / click the mouse button (Macintosh) on the area of the previewed image to view. You can repeat this procedure to magnify the image up to 4 times its previewed size.
- To decrease the magnification of the image, click the Zoom Tool button then click the right mouse button (Windows) / click the mouse button while pressing [Option] key (Macintosh) on the magnified image.



### **Auto Crop Button**

After clicking the Crop button and drawing a rectangle around the part of the image that you want to scan, click the Auto Crop button to size the rectangle for the best fit around the object enclosed by the rectangle.



### **Negative/Positive Button**

Click the Negative/Positive button to invert the colors and create a negative of the image.



### **Mirror Button**

Click the Mirror button to flip the image horizontally like a mirror image.



### **Rotate Left Button**

Click the Rotate Left button to rotate a scanned image left 90 degrees (counterclockwise). Click this button repeatedly to continue rotating the image left.

# What is on the Screen?

Contents

Troubleshooting

Glossary

Index



## Rotate Right Button

Click the Rotate Right button to rotate a scanned image right 90 degrees (clockwise). Click this button repeatedly to continue rotating the image right.



## Rulers Button

Click the Rulers button to display a ruler in the Preview Area to help with sizing and cropping the image. To select the gradations for rulers, click the down-arrow for Units on the Main sheet and then select the units of measure from the drop-down list.



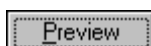
## Help Button

**Windows :** Click the Help button to display the ScanGear CS-U on-line Help.

**Macintosh :** Click the Help button to display / close the balloon help.

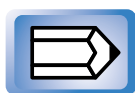


## Scanning Buttons



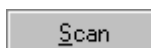
### Preview Button

Click the Preview button to pre-scan the image and display it in the Preview Area so you can decide whether the image needs any adjustments or if you want to apply any special effects. Click this button after cropping the previewed image to perform the enlarged preview.



*Note*

After you click the Preview button, the Preview button becomes a Cancel button. Click this Cancel button to cancel the pre-scan operation.



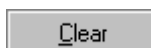
### Scan Button

Click the Scan button to scan the image on the scanner with any special effects or adjustments that have been applied and send the scanned image to the software application from which you launched the ScanGear CS-U.



*Note*

After you click the Scan button, the Scanning dialog box is displayed. Click the Cancel button in this dialog box to cancel the scan operation.



### Clear Button

Click the Clear button to clear the settings for the preview image displayed in the preview area. Does not clear (delete) the image itself.



*Note*

Clicking the Clear Button while pressing [Ctrl] (Windows) / [Command] (Macintosh) key clears the image in the preview area.



# What is on the Screen?

Contents

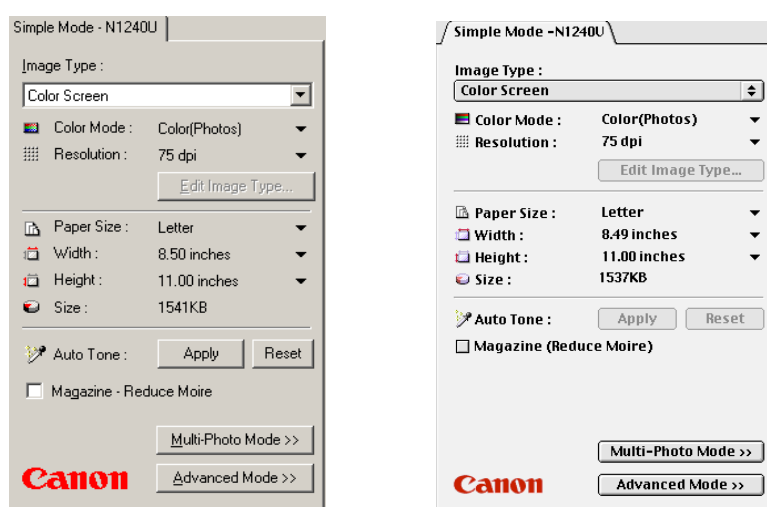
Troubleshooting

Glossary

Index

## Simple Mode Main Window

In the Simple Mode, only the Simple Mode sheet is available in the main window.



### Image Type

When you select the Image Type based on how you intend to use the scanned image, the Color Mode and Resolution settings are selected for you automatically for optimum scanning results. Here is a summary of the available Image Type settings for the image Color Mode and Resolution.

- **Color Screen** (Color, 75 dpi):  
Use to scan the original as it appears on the monitor.
- **Color Photo** (Color, 150 dpi):  
Use to scan color photographs.
- **Color Photo Fine** (Color, 300 dpi):  
Use to scan color photographs for best quality in the scanned image.
- **BJ Printer** (Color, 360 dpi):  
Use to scan a color original that you intend to print on a Bubble Jet printer for maximum quality in the printed image.





- **B/W Photo** (Grayscale, 150 dpi):  
Use to scan black-and-white photographs with varying shades of gray.
- **B/W Photo Fine** (Grayscale, 300 dpi):  
Use to scan black-and-white photographs with varying shades of gray for best quality in the scanned image.
- **Line Art** (Black and White, 300 dpi):  
Use to scan of a black-and-white original that contains a graphic illustration.
- **Laser Printer** (Black and White, 600 dpi):  
Use to scan a black-and-white original that you intend to print on a black-and-white laser beam printer.
- **FAX** (Text Enhanced for Windows / Black and White for Macintosh, 200 dpi):  
Use to scan an original that you intend to send by facsimile.
- **OCR** (Text Enhanced for Windows / Black and White for Macintosh, 300 dpi.):  
Use to scan pages of text that you intend to capture with an OCR software application.



*Note*

With Macintosh, Black and white is applied as the Color Mode instead of Text Enhanced.  
The order of the items is different from the one with Windows.

## Color Mode

Displays the Color Mode setting for the currently selected Image Type. And the Mode can be set to one of the settings provided. In this case, a new Image Type can be saved under a new name.

- **Black and White** The image is scanned in black and white.
- **Grayscale** The image is scanned in black and white but if the original is in color most of the colors will be shaded.
- **Color (Photos)** The image is scanned in color.
- **Color (Documents)** Select for the best possible color quality for documents. Scanning speed at this setting will be slower than with the Color (Photos).
- **Text Enhanced (only for Windows)** Converts grayscale images to black and white using Canon ImageTrust technology. This setting produces sharper text which will be easier for OCR software to read.



### Note

- The Text Enhanced selection requires more time than the Black and White setting, because digitization of the scanned image is performed after scanning it in Grayscale.
- Selecting the Color Mode setting automatically resets the Advanced Mode Tone tab settings.
- Selecting Black and White or Text Enhanced sets the Resolution setting to 300 dpi. If you select any setting other than Black and White or Text Enhanced, the Resolution setting is re-set automatically to the base setting for the Image Type selection.

# What is on the Screen?

Contents

Troubleshooting

Glossary

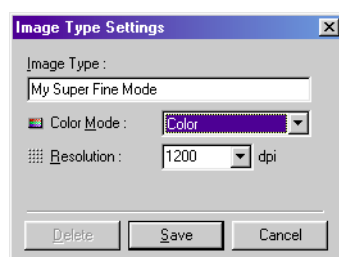
Index

## Resolution

Displays the Resolution setting for the currently selected Image Type. And the Resolution can be set to one of the settings provided. In this case, a new Image Type can be saved under a new name.

## Edit Image Type Button

Click the down-arrow for Image Type and select Custom (or select a previously saved custom selection) and click the Edit Image Type button to open the Image Type Settings dialog box. You can create and save up to 12 custom settings of your own.



### Note

The Edit Image Type button is not enabled until you select Custom (or a custom setting previously saved) from the Image Type drop-down list. This button is also enabled after you select one of the pre-defined Image Types and change the Color Mode or the Resolution setting.



# What is on the Screen?

Contents

Troubleshooting

Glossary

Index

## Paper Size

Specifies the paper size of the image to be scanned.



*Note*

Changing the Paper Size clears the Preview area and clears all settings set with the Toolbar and Tone sheet buttons.

- Business Card
- Statement
- B5
- Executive
- Letter
- A4
- L Portrait
- L Landscape
- LL Portrait
- LL Landscape
- Postcard (6"x4")
- Full Platen

## Width

Displays the width of the scanning area currently selected in the Preview Area. You can change the units to measure the scanning area.

## Height

Displays the height of the scanning area currently selected in the Preview Area. You can change the units to measure the scanning area.

## Size

Displays the estimated file size of the image in the Preview Area.



### **Auto Tone**

Click the Apply button to have ScanGear CS-U automatically adjust the tone of a pre-scanned color image within the cropped area. The Auto Tone is available only when Color or Grayscale has been selected on the Main sheet and when Canon ColorGear Color Matching (Windows) / ColorSync Color Matching (Macintosh) is not selected on the Scanner sheet. To cancel the Auto Tone, click the Reset button.

### **Magazine-Reduce Moiré**

Click this check box if you want ScanGear CS-U to conduct moiré reduction to improve the overall image quality. Moiré are dot patterns that interfere with processing images for professional use and are usually caused by poor dithering resulting from scanning images from newspapers, books, magazines, etc.

This function is the same as the Descreen function in the Advanced mode.

### **Multi-Photo Mode**

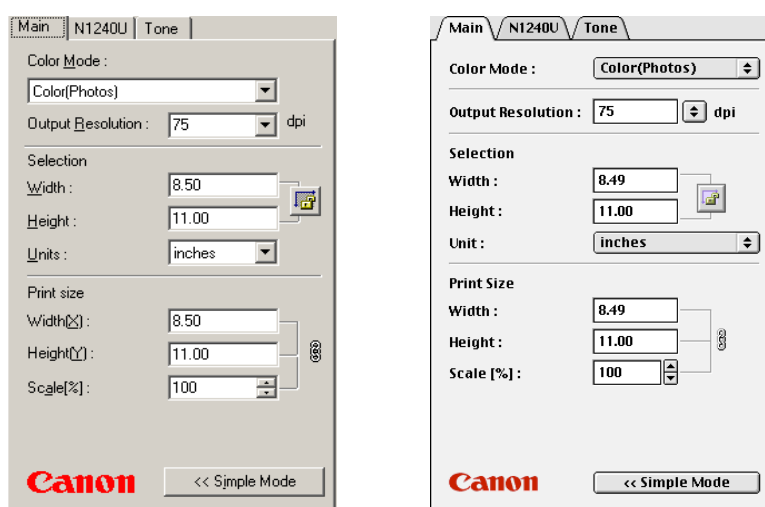
Click this button to start Multi-Photo Mode Scanning.

Multi-Photo Mode is a function used when scanning more than 2 photos with a single operation, and makes the multiple scanned images appear individually in a new window of the application. If you place the photo obliquely, this function will make the adjustment automatically.

See Chapter 5 for details. (→ [p.66](#))

## Advanced Mode Main Window

### The Main Sheet



### Color Mode

The Color Mode determines how the original will be scanned: Black and White, Grayscale, Color, etc. Click the down-arrow and select a setting from the drop-down list.

- **Black and White** The image is scanned in black and white.
- **Grayscale** The image is scanned in black and white but if the original is in color most of the colors will be shaded.
- **Color (Photos)** The image is scanned in color.
- **Color (Documents)** Select for the best possible color quality for documents. Scanning speed at this setting will be slower than with the Color (Photos).
- **Text Enhanced (only for Windows)** Converts grayscale images to black and white using Canon ImageTrust technology. This setting produces sharper text which will be easier for OCR software to read.



### Note

- The Text Enhanced selection requires more time than the Black and White setting, because digitization of the scanned image is performed after scanning it in Grayscale.
- Selecting the Color Mode setting automatically resets the Tone tab settings.

## Output Resolution

Click the down-arrow and select one of the pre-set Resolution settings to set the resolution for the scanning job. The default setting is 75 dpi. Resolution can be set within the range of 25 dpi - 2400 dpi (entering a value into the entry box adjusted in increments of 1 dpi is also possible), or values of 4800, 7200 or 9600 can be entered directly.

- The higher the resolution, the better the quality of the displayed image but the slower the scanning speed. Make sure you select a setting based on the capability of your output device.
- You can enter the value directly into the entry box to scan. However, when you crop an image with a size of more than 21,000 x 30,000 pixels (Windows) / 30,000 x 30,000 pixels (Macintosh), because of the application's specification, the scanning job cannot be performed.

# What is on the Screen?

Contents

Troubleshooting

Glossary

Index

## Selection

Use the Selection options to set the exact size of the image input.



*Note*

To select the area to scan, use the Crop button or Auto Crop button or enter the desired dimensions in the text box.

- **Width and Height** The width and height of the current selection, or if there is no selection, the maximum input size, measured from the upper left corner of the image in the Preview Area and based on the current paper size. To change the Width and Height settings, click the Crop button on the toolbar and select a section of the image in the preview area, or just type the desired dimensions into the Width and Height text boxes.
- **Units** Click the down-arrow and select a unit to measure the scanning area. Changing the Units setting does not affect the image in the Preview Area.



**Keep Proportions button** Click this button to maintain the Width and Height proportions. If you change Width or Height, the other setting will be adjusted automatically to maintain the proportion of the original image. As you enlarge or reduce the selection, note that the Width and Height of the selection remain in correct proportion.





# What is on the Screen?

Contents

Troubleshooting

Glossary

Index

## Print Size

Use the Print size selection to set the output image size. Varying one of Width, Height or Scale makes the others vary automatically. The resolution of the scanned image is kept as specified, so that the scanning resolution changes according to the size setting here.

- **Width and Height** Set the width and height of the image size after scan according to the Unit in the Selection options. The initial values are the same as those in the Selection options.
- **Scale** Allows you to specify the image size after scanning 25% to 400% (preset to 100%) as a percentage of the specified scan area.



*Note*

- Sets the scale for the image sent to the parent software application and has no effect on the image displayed in the Preview Area.



# What is on the Screen?

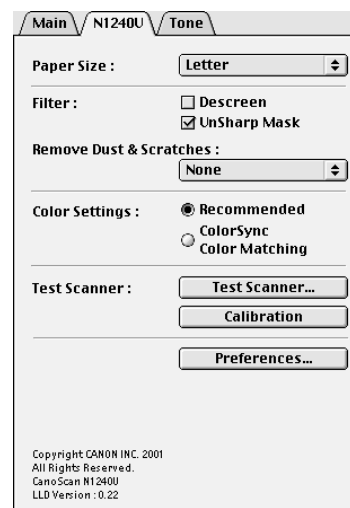
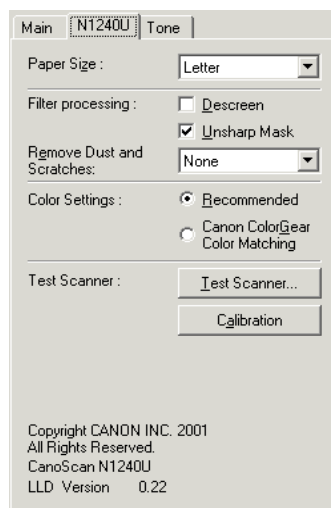
Contents

Troubleshooting

Glossary

Index

## The Scanner Sheet



When you click on the Scanner tab (N670U/N676U or N1240U), the Scanner sheet opens.

### Paper Size

Specifies from the drop-down list the paper size of the image to be scanned.

- Business Card
- Statement
- B5
- Executive
- Letter
- A4
- L Portrait
- L Landscape
- LL Portrait
- LL Landscape
- Postcard (6"x4")
- Full Platen



*Note*

Changing the Paper Size clears the Preview area and clears all settings set with the Toolbar or the buttons on the Tone sheet buttons.

# What is on the Screen?

Contents

Troubleshooting

Glossary

Index

## Descreen

Click this check box if you want ScanGear CS-U to conduct moiré reduction to improve the overall image quality. Moiré are dot patterns that interfere with processing images for professional use and are usually caused by poor dithering resulting from scanning images from newspapers, books, magazines, etc.



*Note*

- When the image would not be improved with Descreen, try to switch the Unsharp Mask function off.
- The effect by Descreen will not show in the Preview area.

## Unsharp Mask

Click this check box to switch the Unsharp Mask feature on and off. Sharpens an image, such as a photograph that is slightly out of focus, by emphasizing the contrast to make outlines clearer.



## Remove Dust and Scratches

This function automatically produces a scanned photo image with the areas under small bits of dirt or scratches removed. The available settings are [None], [Soft], [Normal] and [Hard].

- **Soft** Compensates for high-contrast dirt and scratches. At this setting, it may not be possible to restore areas under large flecks of dirt or scratches.
- **Normal** This setting is recommended for most purposes.
- **Hard** Compensates for low-contrast dirt and scratches. Although it may restore areas under large flecks of dirt or scratches, it may leave artifacts after processing.



### Note

- You can perform this function only when the previewed image appears.
- With large dust and scratches, the traces may remain after this function.
- Areas under dirt and scratches may not be removed if the selected scan area is too small.
- There are occasions when areas under dirt or scratches on the top or bottom edges cannot be removed.
- With this function On, it will take longer to scan.
- When you set both [Descreen] and [Remove Dust and Scratches] to On, only [Descreen] will take effect.
- With books and magazines, this function may not perform well.

This function is particularly effective at removing dirt or scratches from images with large areas of relatively consistent coloring, such as sky shots, etc.



# What is on the Screen?

## Contents

## Troubleshooting

## Glossary

## Index

### Color Settings

When the Color Mode is set to Color, you can select the color adjusting method for scanning from Recommended or Canon ColorGear (or ColorSync) Color Matching. The default setting is Recommended.

- **Recommended**

Reproduces the colors of the scanned item vividly on a computer display. You are advised to use this mode under normal circumstances.

- **Canon ColorGear Color Matching** (Windows)

- **ColorSync Color Matching** (Macintosh)

Automatically matches the color settings of the scanner, computer display and color printer. Select this mode when you wish to set the appropriate color profile to view the colors of the scanned image on the computer display as closely matched to the original image as possible.



*Note*

When you specify “Canon ColorGear Color Matching” or “ColorSync Color Matching” setting, the Auto Tone button will be grayed out and the Tone sheet in the Advanced Mode will not be displayed.

### Test Scanner

Click this button to open the Scanner Diagnostics dialog box. Click the Start button in the Scanner Diagnostics dialog box to test your Scanner. After the test is complete, a message is displayed here to inform you of the results. If a problem is reported after the test, use your scanner instructions to troubleshoot the problem. During the test, do not open the document cover of the scanner.

### Calibration

Click this button to start calibration. Calibration is the adjustment of color processing for input and output devices so the colors in the scanned image match the colors you see on the computer screen and in the printed image. During calibration, do not open the document cover of the scanner.



# What is on the Screen?

Contents

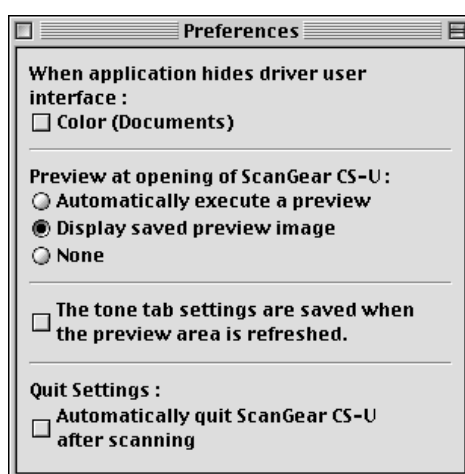
Troubleshooting

Glossary

Index

## Preferences (for Macintosh)

Click this button to display the Preferences sheet for Macintosh. With Windows, the Preferences setting sheet is in Windows Control Panel. Refer to Preferences Settings section in Chapter 6. (→p.75)



### When application hides driver user interface

- **Color (Documents)**

When you place a check mark in this check box, the scan will be executed in Color (Documents), if even the application software sets the Color Mode to Color (Photos). The default setting is Off.

### Preview at opening of ScanGear CS-U

- **Automatically execute a preview**

This setting switches the automatic preview feature on. When this feature is selected, a preview is executed automatically when ScanGear CS-U is launched, and an image of the original on the scanner is displayed in the Preview Area.

- **Display saved preview image**

This setting switches the preview image cache feature on. When this feature is selected, the image in the Preview Area is saved when ScanGear CS-U is closed and then displayed again the next time ScanGear CS-U is launched.

- **None**

Click this button to switch the automatic preview and preview image cache features off.



**The tone tab settings are saved when the preview area is refreshed**

Click the check box if you want to save the tone tab settings although the preview area is refreshed by previewing a new image.

**Quit Settings**

- **Automatically quit ScanGear CS-U after scanning**

The initial setting is "on (checked)". ScanGear CS-U will automatically close after scanning an image. Click the check box to set it to "off", if you want to manually close the ScanGear CS-U window.

## The Tone Sheet

The Tone sheet is displayed only when Color or Grayscale has been selected for Color Mode on the Advanced Mode Main sheet and when Canon ColorGear Color Matching / ColorSync Color Matching is not selected on the Scanner Sheet.

- Changing the Color Mode selection or clicking the Clear button restores the default settings on the Tone sheet.
- Tone sheet adjustment is conducted with the Preview Area.
- Settings can be selected even when there is no image in the Preview Area. In this case the settings take effect on the next scanned image.



These are the Tone sheet buttons that open each tool chart and allow you to enhance images in the Preview Area.

Samples and detailed descriptions of each sheet are provided on the following pages.

### Tone Sheet Buttons



#### Auto Tone button

Auto Tone button turns the automatic tone correction feature on. Automatic tone correction automatically adjusts the image tone within the cropped area to produce a better image. This button and the Auto tone in the Simple Mode sheet have the same feature.



#### Contrast/Brightness button

Opens the Contrast/Brightness sheet and allows you to adjust the brightness and contrast of the entire image.





**Gamma button**

Opens the Gamma sheet and allows you to shift mid-tones so lighter colors are lightened and darker colors are darkened.



**Histogram button**

Opens the Histogram sheet and allows you to adjust tone intensity to enhance an image that is either too light or too dark.



**Special Tone Curves button**

Opens the Special Tone Curves sheet and allows you to adjust the tones for one or all of the three primary colors (RGB) by selecting a special tone curve or editing a tone curve.

### Common Buttons

The Tone sheet settings are commonly set with the Load, Save, Reset and All Reset buttons described below.



#### Load Button

When Color Mode is set for Color (Photos) or Color (Documents), a user-saved file (\*.adc) is opened and used for color adjustment.

When Color Mode is set for Grayscale, user-saved file (\*.adg) is opened and used for gray adjustment.



#### Save Button

When Color Mode is set for Color (Photos) or Color (Documents), the user-defined settings are saved to a file (\*.adc) for color adjustment.

When Color Mode is set for Grayscale, the user-defined settings are saved to a file (\*.adg) for color adjustment.

The system determines the path and file name for the saved file.



#### Reset button

Resets displayed settings of the channel (M, R, G or B) of the function (Contrast/Brightness, Gamma, Histogram or Special Tone Curve) to their default.



#### All Reset button

Resets all the settings of the channels (M, R, G and B) of all functions (Contrast/Brightness, Gamma, Histogram and Special Tone Curve) to their default. Also resets the adjusted image using the Auto tone function to the initial status.

# What is on the Screen?

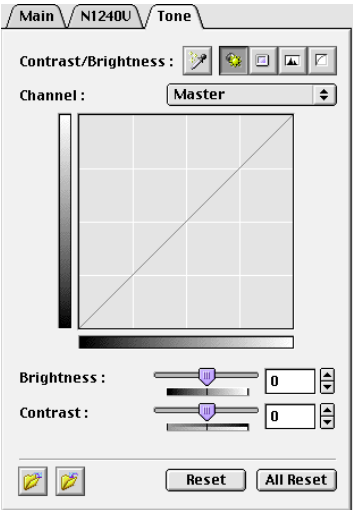
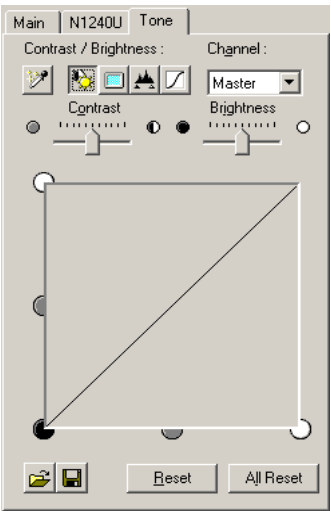
Contents


Troubleshooting

Glossary

Index

## Contrast/Brightness Sheet



 When the Contrast/Brightness button is clicked, the Contrast/Brightness sheet is displayed.

The shape of the tone curve changes to reflect the current Contrast/Brightness setting for the current Channel, and the image in the Preview Area changes to reflect the adjustment.

### Channel

If you want to select one of the primary colors (RGB) for adjusting the contrast or brightness, click the Channel down-arrow and select the color, or leave the settings at Master to adjust all the colors.

### Contrast

Drag the Contrast slider to the left to decrease the contrast of the image or to the right to increase the contrast of the image.

### Brightness

Drag the Brightness slider to the left to darken the image or to the right to lighten the image.



# What is on the Screen?

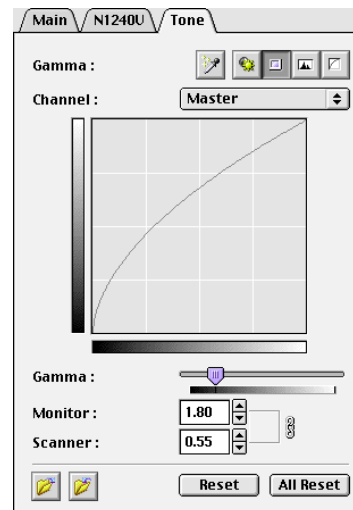
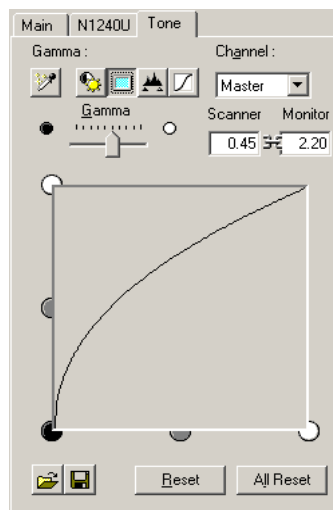
Contents

Troubleshooting

Glossary

Index

## Gamma Sheet



 When the Gamma button is clicked, the Gamma sheet is displayed.

Gamma refers to a process where mid-tones are shifted so that the lighter colors are lightened and darker colors are darkened. For example, let us say you scanned a photograph of a subject in a boat in a tree-lined lake and the shadows of the trees are dark enough and the white of the boat is light enough, but the blue in the sky, the blue of the water, and the blue of the subject's clothing all look the same. By increasing the Scanner Gamma value of the image, the sky might become lighter and the water darker, giving a better contrast to the image. The Monitor Gamma value is a reciprocal number of the Scanner Gamma value.

### Channel

If you want to select one of the primary colors (RGB) for adjusting the gamma value, click the Channel down-arrow and select the color or leave the settings at Master to adjust all the colors.



### **Gamma (Scanner Gamma)**

Drag the Gamma slider to the left or right to set the scanner gamma value or you can type the value directly into the boxes. Entering a value into either boxes of the scanner gamma or the monitor gamma will display a respective value in the other box. The allowed range of values are 0.10 to 10.00, inclusive. The shape of the tone curve changes to reflect the current gamma setting for the current Channel, and the image in the Preview Area changes to reflect the adjustment. When the Scanner Gamma value is modified, the Monitor Gamma value changes automatically.

# What is on the Screen?

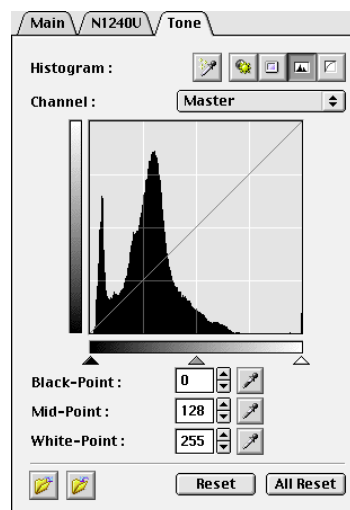
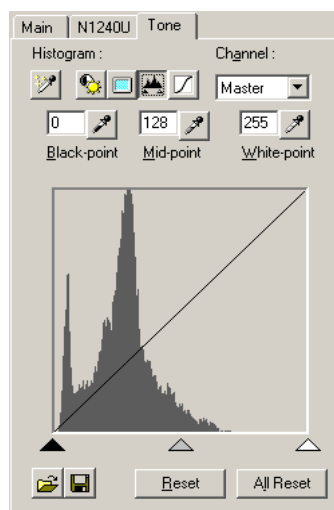
Contents

Troubleshooting

Glossary

Index

## Histogram Sheet



 When the Histogram button is clicked, the Histogram sheet is displayed.

Use the histogram to enhance an image when the image is either too light or too dark, like an overexposed or underexposed photograph. Increasing the darker tones with the histogram improves the contrast of the image.

### Channel

If you want to select one of the primary colors (RGB) for adjusting the histogram, click the Channel down-arrow and select the color, or leave the setting at Master to adjust all colors.



# What is on the Screen?

Contents

Troubleshooting

Glossary

Index

## Eyedroppers (Black-point, Mid-point, White-point)

Click one of the three eyedroppers then click the portion of the image in the Preview Area that you want to sample, or enter values in the text boxes, or drag one of the three triangles at the bottom of the graph to adjust the value. The shape of the tone curve and histogram changes to reflect the current Histogram setting for the current Channel, and the image in the Preview Area changes to reflect the adjustment.



*Note*

A White-point value must be larger than a Black-point, and a Mid-point value must be between the Black-point and White-point.

## Reset

Resets the default values:

- **Black-point:** 0
- **Mid-point:** 128
- **White-point:** 255



# What is on the Screen?

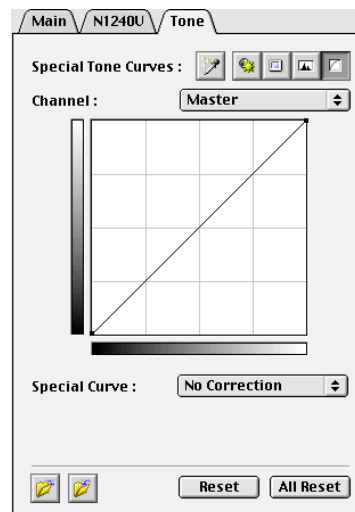
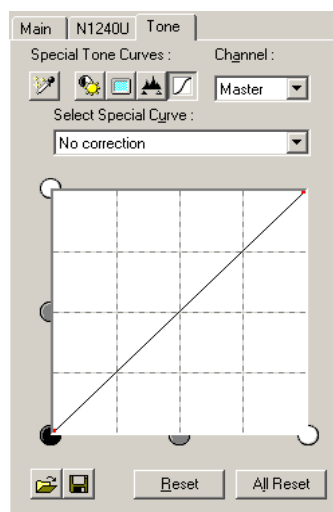
Contents


Troubleshooting

Glossary

Index

## Special Tone Curves Sheet



 When the Special Tone Curves button is clicked, the Special Tone Curves sheet is displayed.

### Channel

Click the down-arrow and select one of the primary colors (RGB) for adjustment or leave the setting at Master to adjust all the colors.

### Select Special Curve

Click the down-arrow and select a setting from the drop-down list. These settings are designed to solve some of the most common problems with scanned images: overexposure, underexposure, or poor contrast:

- **No correction**
- **Fix an image that is underexposed**
- **Fix an image that is overexposed**
- **Fix an image that is low contrast**
- **Edit Custom Curve**

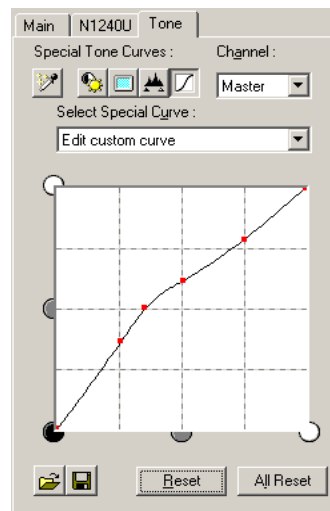




### *Editing a Special Tone Curve Directly*

In the Special Tone Curves graph you can edit the curve directly.

1. Click on the curve and drag each curve anchor point until the desired effect is achieved.



2. To remove an anchor point;  
Drag the anchor point off the graph area.  
- or -  
Right click the anchor point with Windows.  
Click the anchor point while pressing the Control key with Macintosh.

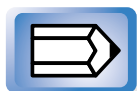
# What is on the Screen?

Contents

Troubleshooting

Glossary

Index

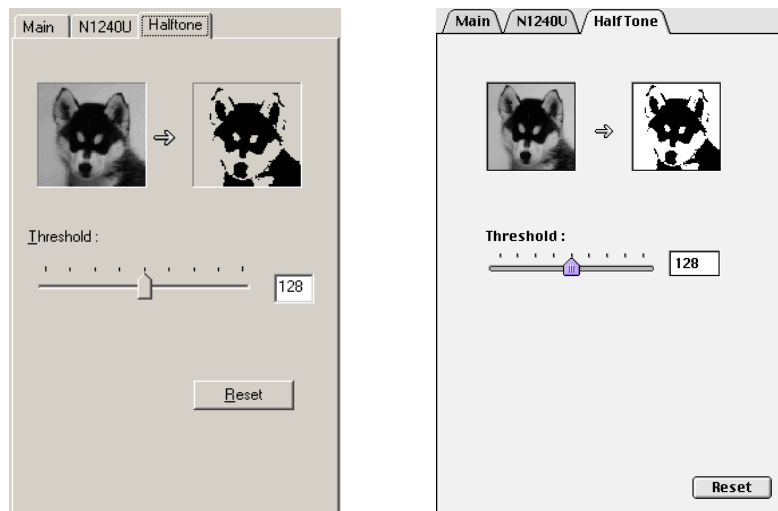


*Note*

## Here are some hints for editing curves:

- Curve handles are drawn on a white background as a red dot to signify that they are editable. When the cursor is over the handle, it changes to a crosshair.
- Curve end points can be selected and dragged to any point in the curve but cannot be deleted.
- Up to 15 points can be added to a curve by clicking anywhere in the curve box.
- If you drag a point outside of a curve box, it will be deleted from the curve and a new curve will form with the remaining points.
- The x and y axes on the curve chart represent the input image color and output image color. When you add a handle to the curve and drag that handle toward the white areas, the preview image tones are adjusted to reflect the change.
- More than one handle cannot be positioned on a vertical line but more than one handle can be positioned on a horizontal line so you can have several handles on a horizontal line.



*The Halftone Sheet*

The Halftone sheet is displayed only when Black and White has been selected for the Color Mode on the Advanced Mode Main window. You can set only Threshold in this sheet.

### Halftoning Threshold

Threshold determines whether portions of an original are scanned as black or white. Drag the slider left to make the image lighter or drag it right to make the image darker. Or you can also enter a value ( 0 - 255) directly into the entry box to the right of the slider.

Contents

Troubleshooting

Glossary

Index

# *Scanning an Original*

Preparing for the Scanning Job

Quick Start

Previewing and Scanning an Original

## ***Preparing for the Scanning Job***

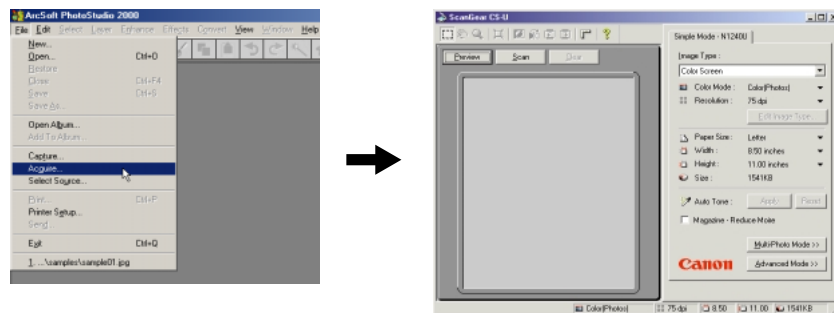
These are some points you should check before you start scanning:

- If you have not yet installed the parent software application you intend to use with the scanner and ScanGear CS-U, install the application.
- Before you start scanning, make sure the scanner is connected correctly.
- Always position the original squarely on the scanner platen with the image side down.
- ScanGear CS-U lets you correct many undesirable features in scanned images, but you will save time and effort by starting with the best possible original. If you are scanning a photograph, for example, make sure the original is in the sharpest possible focus.
- If you are scanning text, make sure the printed text is sharp and clean.

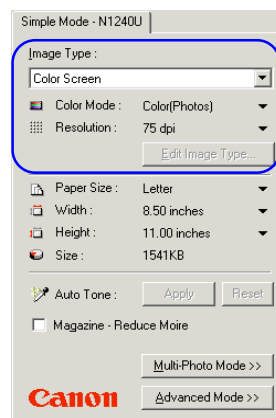
## Quick Start

Follow the procedure below if you want to get started scanning right away. The referenced page numbers provide more details about the steps below. If you need more information about a procedure, go to that page number.

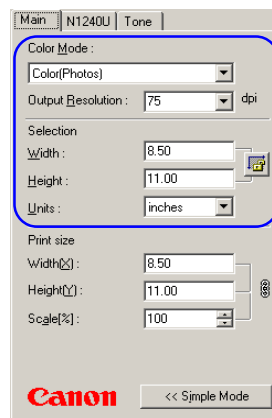
1. Set the original on the Scanner.
2. Start the application program.
3. Start ScanGear CS-U. (☞ p.57, 61)



4. Select the desired Simple or Advanced mode and set the desired settings (resolution, etc.) (☞ p.24, 30)

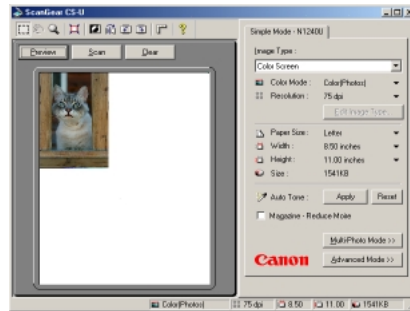


Simple Mode



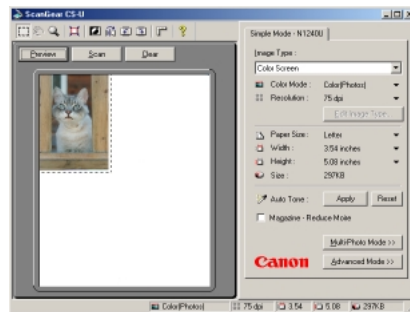
Advanced Mode

5. Preview the original. (☞ p.59, 63)

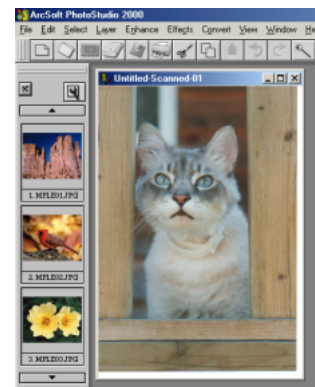
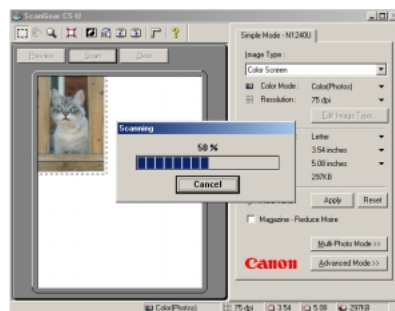


6. Adjust image as required. (☞ p.60, 64)

7. Specify the scanning area. (☞ p.60, 64)



8. Scan the document. (☞ p.60, 64)



9. The image is processed. (For details, ☞ the application manual)

## Previewing and Scanning an Original

You can preview and scan an image in either the Simple Mode or the Advanced Mode. This section describes both procedures.

### Scanning in the Simple Mode

This is a brief overview of the general procedure for previewing and scanning an original in the Simple Mode.

1. Place the original on the scanner.

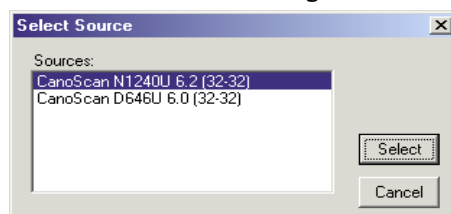


*Note*

For details about positioning the original on the scanner, see your scanner user's manual.

2. Start the software application you are going to use. (for example ArcSoft PhotoStudio)

With Windows, if other TWAIN driver is installed on your computer, you must choose this scanner. Click the [File] menu and select [Select Source], and select [CanoScan N670U / N676U] or [CanoScan N1240U] on the dialog box.



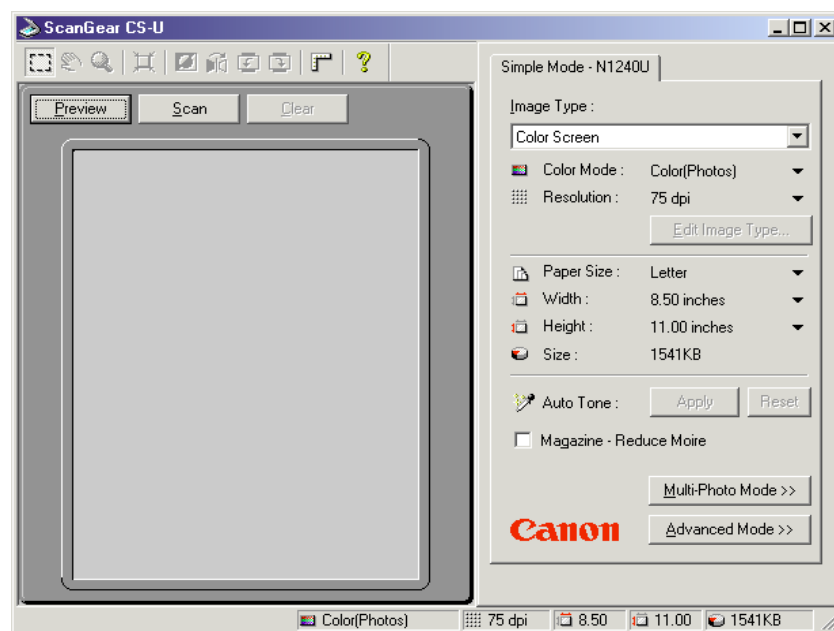


**3.** Start ScanGear CS-U.

The methods for starting ScanGear CS-U vary between application programs. For example of PhotoStudio,

**Windows :** Click the [File] menu and select [Acquire].

**Macintosh :** Click the [File] menu, [Acquire] and [ScanGear CS-U 6.2.0...]. See the respective manuals for other programs.

**4.** The ScanGear CS-U main window opens.

If the Advanced Mode main window appears, click the Simple Mode button.

5. Click the down-arrow for Image Type and select a setting from the drop-down list. (→p.24)



*Note*

Your selection automatically sets the mode for the scanning job.

6. Review the settings you see below the Image Type selection (Color Mode, Resolution, Paper Size, Width, Height, Size). (→p.26-28)

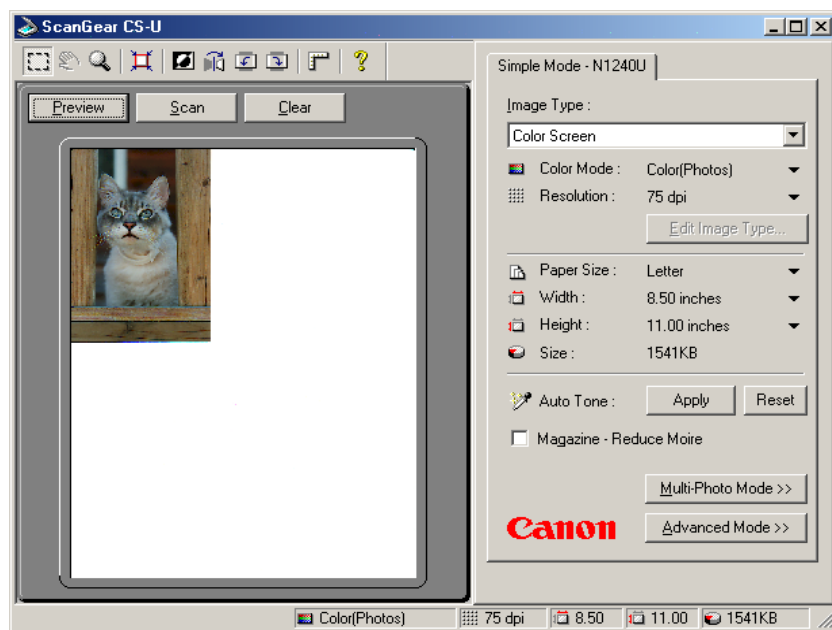
If you are satisfied with these settings go on to the next step.



*Note*

- On the Simple Mode sheet you click one of the flat buttons (the black inverted triangles) to open a pop-up menu and select another setting.
- You can click the Edit Image Type button and define up to 12 custom Image Types in the Image Type Settings dialog box. (→p.27)
- Click the “Magazine-Reduce Moiré” check box (→p.29) on when scanning magazine pages to enable moiré reduction and reduce dot patterns.

7. Click the Preview button to pre-scan the image and display it in the Preview Area.

**Note****Zoomed Preview**

Although the zoom button can be used to zoom in on the image in the preview area, the zoomed image will appear coarse and it may not be possible to make fine selections or adjust image settings. If you use the following method, you can zoom in on a selected area only, and it will be clearly displayed in magnified form in the preview area.

- Select the area of the image you wish to zoom, then click the [Preview] button. The selected area of the image will be pre-scanned in magnified view in the preview area.

8. Click a button in the Toolbar (➡p.20) to manipulate the image.

**Note**

You can click the Auto Tone button (➡p.29) to have ScanGear CS-U automatically adjust the color tones of the scanned image. This is the only color adjustment you can make in the Simple Mode. To perform more detailed color adjustments, click the Advanced Mode button then click the Tone tab to open the Tone Sheet.(➡p.40)

9. Specify the scanning area.  
Point to one corner of the area of the image that you want to scan. Click the left mouse button and, while holding the mouse button down, drag the mouse pointer to the opposite corner of the area you want to scan. Release the mouse button.

The area will be boxed in by a rectangle.



10. Click the Scan button to scan the image.  
The image is acquired in the software application.
11. Close the ScanGear CS-U window. You can edit or save the image with the application software.

## *Scanning in the Advanced Mode*

This is a brief overview of the general procedure for previewing and scanning an original in the Advanced Mode.

1. Place the original on the scanner.



*Note*

For details about positioning the original on the scanner, see your scanner user's manual.

2. Start the software application you are going to use.

With Windows, Confirm that your dscanner is selected in the Select Souce (or its equivalent) dialog box. (→ [p.56](#))

3. Start the ScanGear CS-U.

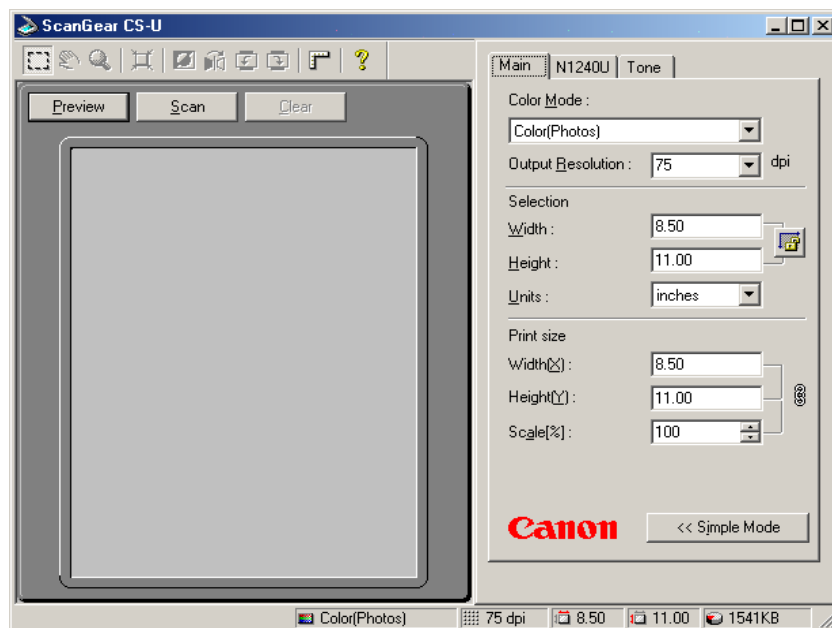
The methods for starting ScanGear CS-U vary between application programs.

**Windows :** Click the [File] menu and select [Acquire].

**Macintosh :** Click the [File] menu, [Acquire] and [ScanGear CS-U 6.2.0...].

See the respective manuals for other programs.

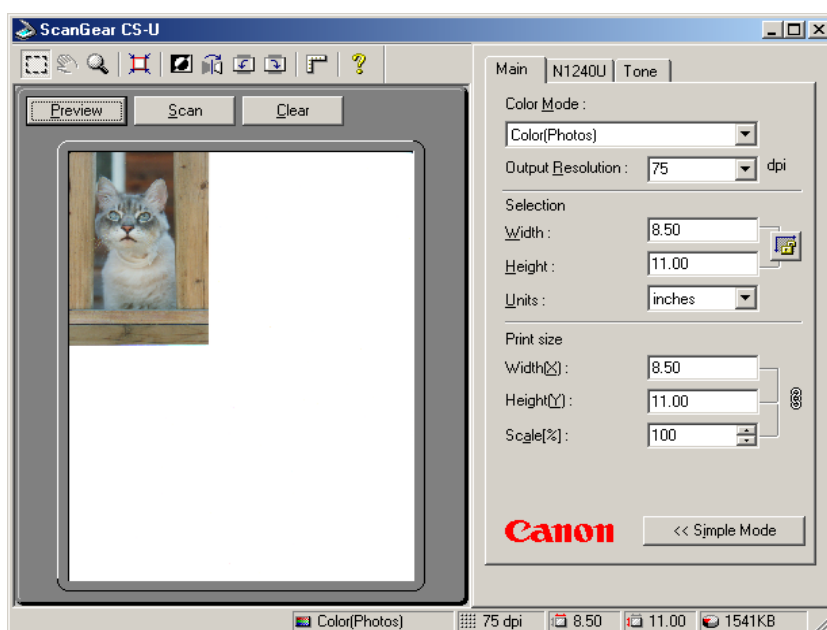
4. The ScanGear CS-U main window opens.



If the Simple Mode main window appears, click the Advanced Mode button.

5. In the Main sheet adjust the settings for the Color Mode, Output Resolution, Selection (Width and Height), and Print Size (Width and Height, or Scale).

6. In the Scanner sheet, specify a variety of settings for operation of the scanner. (→p.34)
7. Click the Preview button to pre-scan the image and display it in the Preview Area.

**Note****Zoomed Preview**

Although the zoom button can be used to zoom in on the image in the preview area, the zoomed image will appear coarse and it may not be possible to make fine selections or adjust image settings. If you use the following method, you can zoom in on a selected area only, and it will be clearly displayed in magnified form in the preview area.

- Select the area of the image you wish to zoom, then click the [Preview] button. The selected area of the image will be prescanned in magnified view in the preview area.

8. Click a button in the Toolbar (☞p.20) to manipulate the image.
9. Adjust the image quality with the tools and options provided on the Tone (☞p.40) or Halftone (☞p.51) sheet.
10. Specify the scanning area.  
Point to one corner of the area of the image that you want to scan. Click the left mouse button and, while holding the mouse button down, drag the mouse pointer to the opposite corner of the area you want to scan. Release the mouse button.

The area will be boxed in by a rectangle.



11. After performing all the settings, click the Scan button to scan the image.

The image is acquired in the software application.

13. Close the ScanGear CS-U window. You can edit or save the image with the application software.



Contents

Troubleshooting

Glossary

Index

# *Multi-Photo Mode*

Multi-Photo Mode

Placing the Photos



# Multi-Photo Mode

Contents

Troubleshooting

Glossary

Index

## Multi-Photo Mode

Multi-Photo Mode is a function used when scanning more than 2 photos with a single operation, and makes the scanned images appear individually in a new window. If you place the photo obliquely, this function will make the adjustment automatically.

### Operations

1. Place the photos on the scanner platen.
2. Start ScanGear CS-U.
3. In the ScanGear CS-U Simple Mode Main window, click the [Multi-Photo Mode] button.



4. [Multi-Photo Mode] wizard appears. Click the [Next] button.



# Multi-Photo Mode

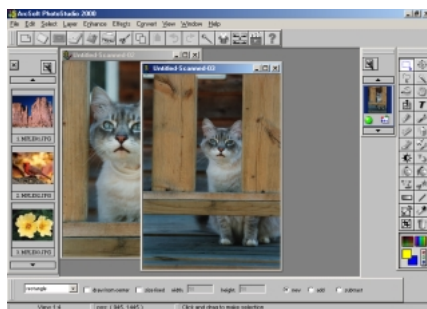
## Contents

## Troubleshooting

## Glossary

## Index

5. After pre-scanning, cropping and scanning are performed automatically the same number times with the number of photos. During these procedures, do not open the document cover. When the Multi-Photo Mode scanning is finished, the ScanGear CS-U main window appears.
6. Click the close box to close ScanGear CS-U. In the application software, the scanned images are opened.



7. Save the images after adjustment if needed.



# Multi-Photo Mode

Contents

Troubleshooting

Glossary

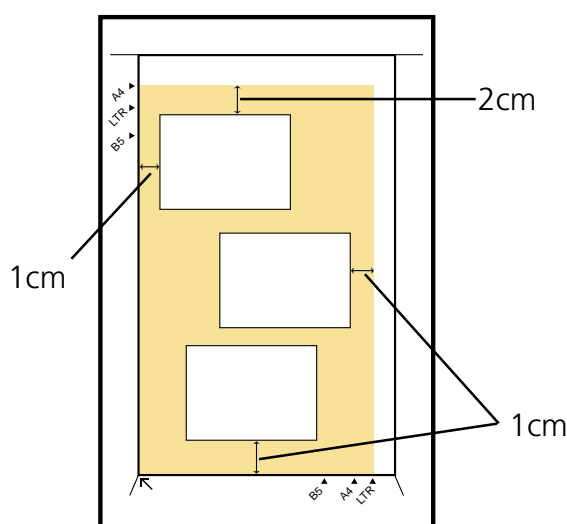
Index

## Placing the Photos

With the Multi-Photo Mode function, the gap between photos is detected using the rear white background of the document cover.

When you place the photos on the platen, note the followings;

- With a photo that appears whitish overall, or around edges, this function will not work correctly.
- With items other than photos, especially printed or manuscripted matter on white paper (documents or business cards), this function will not work correctly.
- Keep more than 1 cm between the photos.
- Keep more than 1 cm between the photos and the right, left, and front edges of the platen, 2cm between the photos and back edge.
- You may place the photos either vertically or horizontally and diagonally.
- Up to 10 photos can be processed.



**Note**

If ScanGear CS-U is launched from the application that cannot open 2 or more images at a time, when using the [Multi-Photo Mode] function, an image of the entire platen is sent to the application.



Contents

Troubleshooting

Glossary

Index

# ***Settings in the Windows Control Panel (Windows only)***

Opening Scanners and Cameras Properties

General Settings

Events Settings

Preferences Settings

Color Management Settings

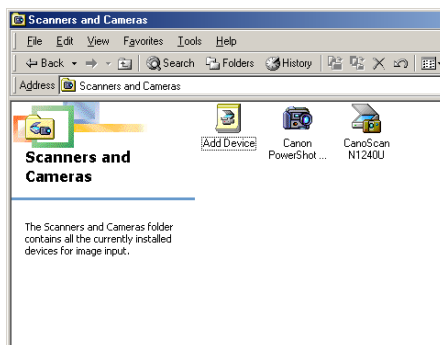


## Opening Scanners and Cameras Properties

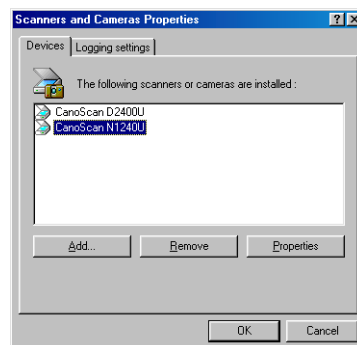
You can specify some settings for ScanGear CS-U with using Scanners and Cameras properties in Windows Control Panel.

Scanners and Cameras Properties dialog can be opened with the following procedures. Be sure to close ScanGear CS-U for this operation.

1. On the Windows desktop click the Start button, point to Settings, and click Control Panel.
2. In the Control Panel window double-click the Scanners and Cameras icon.
3. In the Scanners and Cameras Properties window, click the name of the scanner, and click the Properties button.



Windows Me



Windows 98



# Preferences Settings

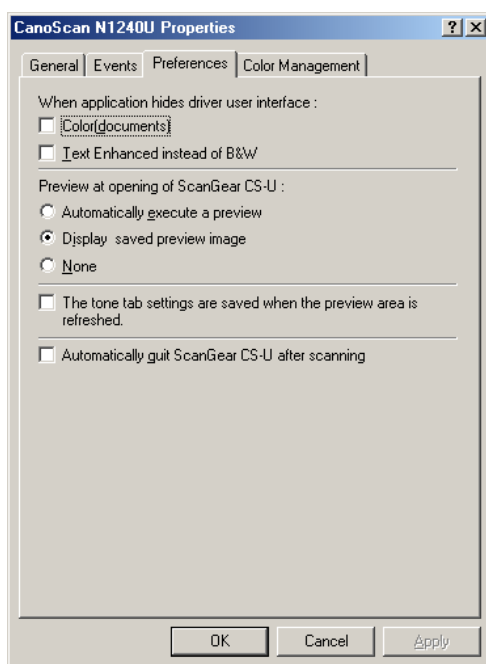
Contents

Troubleshooting

Glossary

Index

4. In the Properties window, click the appropriate tab (General, Events, Preferences or Color Management) to open the respective sheet.

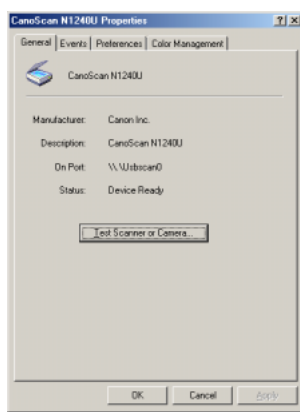


5. Confirm that the settings are appropriate. Otherwise make changes as necessary. After the changes are made, click the Apply button to validate the changes.
6. Click the OK button. The dialog is closed and the Scanners and Cameras properties dialog is activated.
7. Click the OK button. The settings are completed. The changes will be effective the next time you launch the ScanGear CS-U.



## General Settings

The General sheet provides details the name of the connected scanner, its current status, and a button for diagnostic testing.



### Test Scanner or Camera

Follow the procedure below to execute the scanner diagnostic test.

1. Click the Test Scanner or Camera button.  
The scanner diagnostic test begins. If the test detects no problems, a message will tell you that the scanner has passed the diagnostic test.
2. Click the OK button.



#### Note

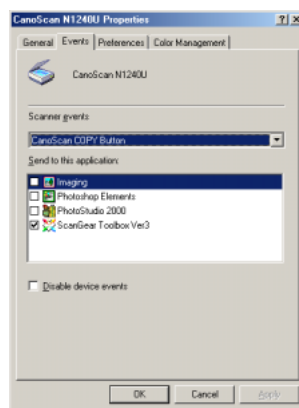
You cannot perform the scanner diagnostic test while ScanGear CS-U is starting.





## Events Settings

The Event sheet allows you to select the software application that you want to start when you press the Scanner buttons on the scanner.



### Scanner events

Select one of the Scanner buttons.

CanoScan COPY Button, CanoScan E-MAIL Button or CanoScan SCAN Button.

### Send to this application

The list box provides the names all of the TWAIN-compliant software applications which can be started when you press the Scanner button on the scanner. Click the check box to select the software application to be started by pressing the Scanner button.

After installing all the software using the CanoScan Setup Utility CD-ROM, only ScanGear Toolbox Ver.3 has a check mark beside it.

## Disable device events

Click this check box off to disable this feature. Clicking this check box off disables the Start button on the scanner (nothing will happen if the button is pressed).



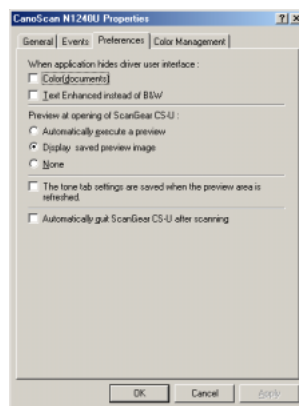
### *Note*

The settings will become effective for the button for which the scanner events have been selected.  
To set both buttons, click the Apply button after you have finished the settings for one button and then adjust the settings for the other button.



## Preferences Settings

The Preferences sheet allows you to select the action of previewing and scanning.



### When application hides the driver user interface

Some application softwares such as an OCR software will not display the ScanGear CS-U main window while scanning. With such application softwares, scanning is executed with the settings of the application software so that the Color Mode setting cannot be changed.

In this setting sheet, placing a check mark in the check box of "Text Enhanced instead of B&W" will execute the scan in the Text Enhanced, regardless of the application software setting.

#### •Color (Documents)

When you place a check mark in this check box, the scan will be executed in Color (Documents), if even the application software sets the Color Mode to Color (Photos). The default setting is Off.

#### •Text Enhanced instead of B&W

When you place a check mark in this check box, the scan will be executed in Text Enhanced, if even the application software sets the Color Mode to Black and White. The default setting is Off.

## Preview at opening of ScanGear CS-U

The preview opening settings determine what is displayed in the Preview Area every time ScanGear CS-U is launched from the parent software application.

- **Automatically execute a preview**

This setting switches the automatic preview feature on. When this feature is selected, a preview is executed automatically when ScanGear CS-U is launched, and an image of the original on the scanner is displayed in the Preview Area.

- **Display saved preview image**

This setting switches the preview image cache feature on. When this feature is selected, the image in the Preview Area is saved when ScanGear CS-U is closed and then displayed again the next time ScanGear CS-U is launched.

- **None**

Click this button to switch the automatic preview and preview image cache features off.

## The tone tab settings are saved when the preview area is refreshed

Click the check box if you want to save the tone tab settings although the preview area is refreshed by previewing a new image.

## Automatically quit ScanGear CS-U after scanning

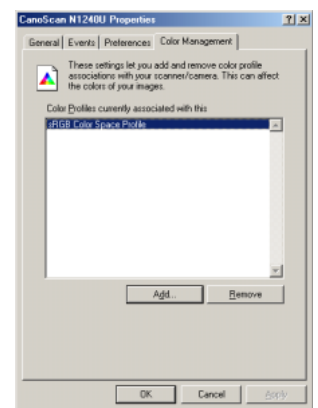
Click the check box if you want ScanGear CS-U to close every time you click the Scan button to scan an image.



## Color Management Settings

The Color Management sheet allows you to add or remove basic profiles for Canon ColorGear Color Matching.

- Click the Canon ColorGear Color Matching check box on in the Preferences sheet.
- The sRGB Color Space Profile is added automatically when ScanGear CS-U is installed.
- If several profiles have been added, only the most recent profile added is enabled.
- Even if you delete all profiles, the sRGB Color Space Profile will remain automatically selected.



Contents

Troubleshooting

Glossary

Index

# *Uninstalling ScanGear CS-U*

Uninstalling ScanGeat CS-U (Windows only)



# Uninstalling ScanGear CS-U

Contents

Troubleshooting

Glossary

Index

## Uninstalling ScanGear CS-U



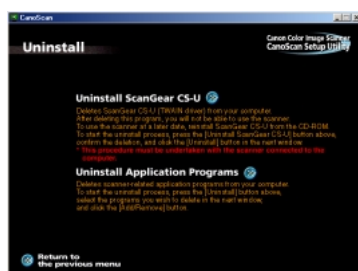
*Note*

- Always uninstall ScanGear CS-U with this procedure using the CanoScan Setup Utility CD-ROM
- Make sure the scanner is connected to the computer.

1. Place the CanoScan Setup Utility CD-ROM in the drive.
2. Click [Uninstall the Software] in the CD-ROM's menu window.



3. Click [Uninstall ScanGear CS-U] in the Uninstall menu window.



4. Click [Yes] in the confirmation dialog.
5. If you will re-install ScanGear CS-U, restart the computer.



Contents

Troubleshooting

Glossary

Index

# *Troubleshooting*

Pre-Scan Checklist

How to Avoid Problems

Troubleshooting Checklist





## Pre-Scan Checklist

Perform the checks on this short list before you begin troubleshooting specific problems.

- Make sure that the ScanGear CS-U software was installed successfully.
- Confirm that the cables between your computer and scanner are connected securely.
- Before scanning or previewing, check that the data source has been selected. If your scanner does not appear as an option when you select a source to scan from your imaging software, you have to install ScanGear CS-U again.



## ***How to Avoid Problems***

Here is some general advice on avoiding problems in your scanning jobs:

- Start with the best possible original image to scan.
- Select only the part of the image you want to scan. Preview the image and select it with the Crop and Auto Crop buttons. Not only does a more precise selection save file space, but your image quality will be much higher.
- Check the output file size before beginning the scan. Make sure you have enough room if you are scanning files that require a large amount of disk space.
- Match your Color Mode to the output purpose. If you are scanning text, use the Text Enhanced mode or Black and White mode at 300 dpi or higher. If you are scanning line art, use the Black and White setting, and so on.
- Match your scan resolution to the type of file you need. If you are scanning images for use as .GIF or .JPG files on the Web, you do not have to scan at 600 dpi. Although it is recommended that you scan at a higher resolution than you need for high-quality color images, you should balance that factor against your planned use for the image.
- Take advantage of the Tone sheet features to enhance your images. (👉 p.40)
- Try to use True Color mode on your monitor so you can view your preview image as accurately as possible.

- If you are using OCR software, scan in Text Enhanced mode or Black and White mode at 300 dpi or higher.
- Take advantage of the preview feature and preview as much as you want before scanning.

## Troubleshooting Checklist

### ScanGear CS-U does not launch.

- Problem:** ScanGear CS-U does not launch within the application software.
- Cause1:** The scanner may not be connected correctly.
- Solution:** Make sure the scanner is properly connected to your computer before you turn on the computer. If not, connect the scanner.
- Cause2:** You may have chosen the wrong scanner source in your software application.
- Solution:** Make sure you selected the correct scanner in the parent software application. For details, see your software application documentation for instructions.
- Cause3:** The scanner configuration file may have been changed.
- Solution:** Uninstall ScanGear CS-U (➡p.79) then reinstall ScanGear CS-U. (➡Quick Start Guide)

### The software application cannot find the scanner.

- Problem:** When trying to scan, an error message says the scanner cannot be found.
- Cause:** Windows may not recognize your scanner.
- Solution:** Make sure the scanner is connected to your computer before you turned on the computer and started Windows. If not, connect the scanner. Then restart your computer. If this does not correct the problem, consult the scanner user manual for additional information about how to properly set up your scanner.



**Some buttons are grayed-out.**

**Problem:** Some buttons are grayed-out and not available.

**Cause:** Some functions are not available until an image has been previewed.

**Solution:** Preview an image.

**Scanning is too slow.**

**Problem:** The scanner is taking an unusually long time to print or scan.

**Cause1:** The selected output resolution of the image may be too high for the resolution of your printer, or your computer may be low on memory.

**Solution:** Before scanning the image, make sure you have set the Scan Resolution on the Main tab to not exceed the resolution of your printer. Also check to see if there is enough memory available in your computer. Before scanning, quit other applications that are not in use.

**Cause 2:** **With Windows,** DMA option for computer's hard disk drive is not turned on.

**Solution:** Turn on the DMA option in the System Properties dialog as described below.

**Windows 98/Me:**

- (1) Right-click the [My Computer] icon on the Windows desktop.
- (2) Select [Properties] from the pop-up menu and click the [Device Manager] tab in the System Properties dialog.
- (3) In the [Disk Drives] category, select the appropriate hard disk and click the [Properties] button on the Device Manager tab.
- (4) Click the [Settings] tab and place a check in the [DMA] option.
- (5) Restart the computer.

## Windows 2000:

- (1) Right-click the [My Computer] icon on the Windows desktop.
- (2) Click the [Hardware] tab and click [Device Manager] button.
- (3) Click on the [+] on the left of [IDE ATA/ATAPI Controllers].
- (4) Select [Primary IDE Channel], right-click it to show the pull-down menu and select [Properties].
- (5) Click the [Advanced Settings].
- (6) In the [Device 0], select [DMA if available] in the [Transfer Mode].
- (7) Click [OK].
- (8) Close the [Device Manager] window and click [OK] to close the [System Properties] window.
- (9) Restart the Computer.

Please consult the manufacturer of your computer for confirmation that the DMA function is supported.



## The scanner diagnostics test fails.

**Problem:** The Scanner Diagnostics test (➡p.72) returns a Test Failed message.

**Cause:** The scanning unit may not be in its home position.

**Solution:** Close the ScanGear CS-U window if it is open. Try turning the scanner off and back on again by unplugging and plugging in the USB cable.

## Colors not what you expect.

**Problem:** The colors in the preview image appear different from the colors in the original image.

**Cause1:** The scanned colors need to be adjusted.

**Solution:** Make sure the Apply button of Auto Tone is selected.(➡p.29)  
If further adjustments are necessary, use the Tone sheet buttons.(➡p.40)

## Parts of an image are missing or the image surrounded by extra white area.

**Problem:** Some parts are missing from the image in the Preview Area, or the image is not aligned in the Preview Area.

**Cause:** The original has been placed on the scanner improperly, or cropped the larger area than the original.

**Solution:** Check the scanner and place the original correctly, and crop the desired area of the image after previewing.



## The preview image of a photograph appears blurred.

**Problem:** When zooming in on a photograph in the Preview area, the enlarged image appears blurred.

**Cause:** The preview scan uses a lower resolution than the final scan. If you zoom in on a preview image so it is enlarged, the image will not maintain its resolution in the same way as the final scanned image.

**Solution:** Try to use the Zoomed Preview function. Crop the image you wish to zoom, then click the [Preview] button. The selected area of the image will be pre-scanned in magnified view in the preview area.

## The colors differ between the Preview and the Print

**Problem:** When printing the image, its color differs from the one in the Preview area.

**Cause1:** The toner of the printer is going short.

**Solution:** Confirm the toner of the printer.

**Cause2:** Canon ColorGear / ColorSync Color Matching may have not been selected when it was necessary.

**Solution:** Check that Canon ColorGear / ColorSync Color Matching is selected on the Preferences sheet. (Windows ➡ [p.75](#), Macintosh ➡ [p.38](#))

**Cause3:** The settings of the printer driver, such as color balance or Gamma, do not match to the printer.

**Solution1:** Adjust the color balance in the printer driver manually.

**Solution2:** Change the Gamma value setting of the printer driver.





## Image is too light or too dark compared to the original.

- Problem:** Scanned or printed image is much lighter or darker than the original.
- Cause:** Image and color adjustments may not have been set properly.
- Solution:** The best solution is to scan the image using all default settings again. Then make imaging and color adjustments as necessary.

## The preview image is too small on the monitor

- Problem:** The image in the Preview Area is very small, and cannot be viewed in the Preview Area for adjustment.
- Cause:** If you have a high-resolution setting on your monitor, the ScanGear CS-U window is smaller than if you had a lower-resolution setting.
- Solution:** Drag the Window Resize Corner (👉p.19) on the lower right of the ScanGear CS-U window to enlarge the entire window or lower your monitor's resolution with the Control Panel.



[Contents](#)

[Troubleshooting](#)

[Glossary](#)

[Index](#)

# ***Glossary***



## Acquired Images

Images sent from your scanner software to the host graphics application.

## Auto Crop

After you select an area of the screen by clicking the Crop button and dragging a rectangle around the object or text you want to crop, click the Auto Crop button to size the rectangle exactly to the size of the object or block of text enclosed in the rectangle.

## Auto Tone Adjustment

Automatic analysis and adjustment of the image using Contrast/Brightness and Gamma settings.

## Automatic Preview

When the automatic preview feature is switched on, the original on the scanner is pre-scanned immediately as ScanGear CS-U is launched from the parent software application. To switch this feature on and off, open the Preferences sheet for your scanner and click the button for “Automatically execute a preview”. (👉p.76)

## Bits and Bit Depth

A bit (Binary digit) is the smallest possible unit of information on a computer; it represents yes or no; on or off; 1 or 0. Bit Depth is used to describe the complexity of a graphic image.

One-bit, or bi-level, images are black and white. This is the Black and White setting in ScanGear CS-U. Eight-bit grayscale uses 256 shades of gray to accurately represent most black and white photographs or gray interpretations of color images. This is the Grayscale setting in ScanGear CS-U. Twenty-four-bit color, also called True Color, uses three eight-bit channels, one channel each for Red, Green and Blue, to create up to 16.7 million colors. This is the Color setting in ScanGear CS-U.

## **Black-point**

The darkest portion of an image scanned as Color or Grayscale. When you click on the image with the Black-point eyedropper, all tones darker than the selected sample tones are adjusted to black.

## **Brightness**

The overall amount of lightness or darkness in an image. An image with maximum brightness tends toward white; an image with minimum brightness tends toward black. While contrast refers to the range and number of tones in an image, brightness refers to the intensity of tones.

## **Calibration**

Calibration refers to the adjustment of color processing for input and output devices on a computer, so that the colors match throughout the process. For example, calibration ensures that the color image scanned on a scanner matches the original image when it is displayed on the computer monitor, as well as printed on a color printer.

## **Canon ColorGear Color Matching (Windows)**

Canon's process of matching the color profile of the input device (scanner) with the color profile of the output device (monitor), to yield the most accurate color image.

## **Canon ImageTrust (Windows)**

Canon's process of converting grayscale image (8 bits per pixel) to a black and white image (1 bit per pixel) to yield a more effective scan for optical character recognition (OCR) applications.

## **Channel**

See Color Channels.



## Color Channels

The red, green, or blue components of a color image. Color images contain 8 bits per pixel each for red, green, and blue channels, therefore each pixel has 24 bits. If you are scanning a color image, you can change the brightness and contrast of the individual red, green, and blue tones in your image. The Master channel is a combination of the three.

## Color Matching

The range of colors your scanner can see may not match the range of colors your video monitor can produce. Color matching lets your system display colors so that the color on your monitor and printer matches the colors scanned. See also Canon ColorGear Color Matching and ColorSync Color Matching.

## Color Mode

The type of scan used to scan an image, differentiated by the number of bits per pixel. ScanGear CS-U has the following Color Modes: Color (Photos), Color (Documents), Grayscale, Text Enhanced (only for Windows), and Black and White.

## ColorSync Color Matching (Macintosh)

The Color managements System developed by Apple Computer as an extension function of Mac OS. Process of matching the color profile of the input device (scanner) with the color profile of the output device (monitor), to yield the most accurate color image.

## Contrast

Contrast refers to the difference between the lightest light and the darkest dark in the image. A low contrast value indicates that the difference between dark shades and light shades is not very great. A high value indicates a great difference between dark and light shades. While brightness refers to the intensity of tones in an image, contrast refers to the range and number of tones in an image.

## Crop

The action of selecting part of an image. The Crop button on the ScanGear CS-U main window lets you select part of a preview image and re-preview or scan only that selected part.

## Curve chart

The graph displayed in the Tone tab settings for the Auto Tone, Contrast/Brightness, Gamma, Histogram, and Special Tone Curves features. This graph describes the relationship between the color characteristics of the previewed image and the available feature settings.

## Curve file

A file containing Special Tone Curve settings. (Tone tab-Special Tone Curves)

## Custom curves

A user-defined Special Tone Curve that may be saved in a file. (Tone tab-Special Tone Curves)

## Default

The preset factory settings on hardware or software.

## Digitizing

The process of converting an image into computer-usable (digital) information that can be saved as a file, printed, faxed, or otherwise manipulated on your computer.

## dpi

The abbreviation for dots per inch. The resolution of a monitor or printer is measured in how many dots per horizontal inch it can display or print. See also Pixel, Optical resolution, Resolution.



## End points

The points at each end of a preset or custom tone curve. The curve end points cannot be deleted. If they are dragged to or past an edge, they remain on the edge. Add points to the curve by clicking anywhere in the curve box.

## Executive

A standard U.S. paper size measuring 7.25 x 10.5 in (184.2 x 266.7 mm)

## Eyedropper

A Histogram tool used to sample the Black-point, Mid-point, and White-point areas in the previewed image. (Tone tab - Histogram)

## Full Platen

The maximum scanning area on the scanner's document glass, 216 x 297 mm (width of U.S. Letter and length of A4 paper sizes).

## Gamma Curve

The Gamma Curve lets you change the midtones of colors to increase the contrast between colors and enhance the overall image. When you increase the Gamma value, light colors are made lighter, and dark colors are made darker. The graphed curve represents the relationship between input and output values for the midtones of the preview image.



## Grayscale

Grayscale refers to a single-channel image made up of 256 shades of gray, ranging from white to black, that represent all tones in an image.

## Halftoning

A method of simulating intermediate tones in black-and-white images by varying the patterns dots and lines. Halftoning is usually used for photographs, or other images with intermediate tones, scanned in Black and White.

## Height

The Height text box contains the height of the current selection, or, if there is no selection, the maximum vertical output size, based on the currently selected Paper Size.

## Histogram

The Histogram displays the distribution of bright and dark pixels for each color channel in the previewed image. The Eyedropper tool on the histogram graph lets you redefine the tonal profile.

## Keep Proportions button

The Keep Proportions button affects the selection and the Width and Height text boxes. When you click the Keep Proportions button, the image size is maintained in the same proportion whenever you change either the width or the height.

## Low contrast

An image that has low contrast does not have many distinct differences between tones.

## Magazine-Reduce Moiré / Descreen

Moiré patterns are caused by poor dithering as a result of scanning images from published materials like newspapers, magazines, books, etc. When this feature is on, moiré reduction smoothes the overall appearance of the image and enhances image quality.





**Mid-point**

The mid-tone portion of the image scanned as Color or Grayscale. When you click on the image with the Mid-point eyedropper, all tones between the black-point and white-point are adjusted in relation to the mid-point setting.

**Mid-tone**

Mid-tones are the middle range of tones in an image, between highlights and shadows. Midtones can be adjusted for color and grayscale images with the Gamma tool.

**Multi-Photo Mode**

Multi-Photo Mode is a function used when scanning more than 2 photos with a single operation, and makes the scanned images appear individually in a new window. If you place the photo obliquely, this function will make the adjustment automatically.

**OCR (Optical Character Recognition)**

OCR (Optical Character Recognition) software converts text images into actual text characters readable by a word-processing program or similar application. The Text Enhanced scan setting sharpens black and white contrast to assist in the accurate recognition of characters in OCR software.

**Optical resolution**

A scanner's resolution capability. See also dpi, Resolution.

**Output Dimensions**

The final dimensions of the scanned image, based on paper size, cropping, and scaling.

**Output size**

The size of the acquired image, calculated by multiplying the width and height by the scale percentage.

**Overexposed**

An image that was exposed to too much light while it was being photographed.

**Pixel**

An acronym for "picture element," a pixel is the smallest element used to create a screen image. It can contain up to 42 bits of color information.

**Platen**

The scanner's document glass, where originals are placed for scanning.

**Preset Curves**

A set of curves designed to fix common photographic image problems such as underexposure, overexposure, or low contrast.

**Preview Area**

The area located to the left of the ScanGear CS-U main window where the image is displayed before the scan occurs. When you click the Preview button, the image on the scanner is scanned into the Preview Area, but not acquired by the application.

**Plug-in**

A plug-in is a program that augments the functions of a plug-in compatible application program.

ScanGear CS-U for Macintosh is not a stand-alone program that can be started by itself. It is used as a plug-in program. In this case, start an application program first, then select [ScanGear CS-U 6.2.0...] from within the program. The scanned images will load directly into that application program.



## **Preview image cache**

When the preview image cache feature is switched on, the image in the Preview Area from the previous session with ScanGear CS-U is saved and displayed the next time ScanGear CS-U is launched from the parent software application. To switch this feature on and off, open the Preferences sheet for your scanner and click the button for “Display saved preview image”.

## **Proportion**

The ratio of width to height. When you click the Keep Proportions button, the image size is maintained in the same proportion whenever you change either the width or the height.

## **Remove Dust and Scratches**

This function automatically detect and remove small flecks of dirt or scratches on photos.

## **Resolution**

The degree of detail, translated into the number of pixels or dpi, which a device such as a scanner, video monitor, printer, or other image-displaying device, can display or reproduce. See also dpi, Pixel, Scan Resolution.

## **Rotate Left**

The Rotate Left tool rotates the preview display 90 degrees counterclockwise. If the Preview Area is in portrait orientation, it becomes landscape and vice versa.

## **Rotate Right**

The Rotate Right tool rotates the preview display 90 degrees clockwise. If the Preview Area is in portrait orientation, it becomes landscape and vice versa.

## **Sampling**

In scanning, sampling is the process of measuring and recording the tonal or color value in an image and converting it to digital information.



**Scale**

The Scale setting lets you specify an output size for the selected image as a percent of the original width and height.

**Scan button**

Clicking the Scan button scans the original and sends it to the host software application.

**Scanner**

An input device that scans an original with a light source, and converts the image tones to digital information for computer applications. The digital information can be saved as a file, or converted to a text file using OCR software.

**Scan Resolution**

A list of preset levels of detail, expressed in dots per inch (dpi), for the scanned image, available from the Resolution list. See also dpi, Pixel, Resolution.

**Sliders**

On some of the controls in ScanGear CS-U, for example, the Contrast/Brightness tool you click the slider and move it to the left or to the right to change the values.

**Statement**

A U.S. standard paper size measuring 5.5 x 8.5 in (139.7 x 215.9 mm).

**Status Area**

The information line at the lower border of the ScanGear CS-U main window which provides helpful information about the current image and settings.

## **Text Enhanced**

A feature used by ScanGear CS-U to increase the accuracy of text scans. When Text Enhanced is selected for the Color Mode, images are scanned as Grayscale (8 bits per pixel) and converted to Black and White (1 bit per pixel) using Canon ImageTrust processing software. This mode is not supported with Macintosh Version.

## **Threshold**

In a black-and-white image, the point at which a gray pixel is determined to become either black or white. The Threshold slider is on the Halftone sheet. Adjust the Threshold value when you are scanning a grayscale or halftone original with the Black and White setting.

## **Tone Curve**

The curve displayed with the Tone tab tools to indicate the Black-, Mid-, and White-point tones in a color or grayscale preview image. You cannot edit the curve except with the Special Tone Curves tool.

## **Tone sheet**

The Tone sheet contains tools that let you adjust and correct the image tone. The Tone sheet tools include Auto Tone, Contrast/Brightness, Gamma, Histogram, and Special Tone Curves.

## **Toolbar**

A set of ScanGear CS-U tool buttons, located above the Preview Area, for image selection, orientation, and other basic adjustments.

## **TWAIN**

TWAIN refers to an industry standard for transferring information from devices (such as a scanner or digital camera) to your computer. One interpretation of the acronym is "Technology Without An Interesting Name."

## **Underexposed**

A dark photographic image that was exposed to too little light when it was photographed.

## **Unsharp Mask**

Sharpens an image, like a photograph that is slightly out of focus, by emphasizing the contrast to make outlines more clear.

## **USB**

An abbreviation of Universal Serial Bus, an interface for external devices connected to a computer and easily used simply by plugging and unplugging the USB cable while the computer is switched on.

## **White-point**

The lightest portion of the image scanned as Color or Grayscale. When you click on the image with the White-point eyedropper, all tones lighter than the selected sample tone are adjusted to white.

## **Width**

The Width text box contains the width of the current selection or, if there is no selection, the maximum horizontal output size, based on the currently selected paper size.

## **Width-Height ratio**

Proportion of the image. To keep the width-height ratio intact, click the Keep Proportions button before changing the width or height values.



Contents

Troubleshooting

Glossary

Index

## X and Y Axes

The X and Y axes on the Tone sheet curve chart represent, respectively, the input image color and output image color.

## Zooming

Enlarging an image or a selected part of the image in the preview window or in a graphics application.



Contents

Troubleshooting

Glossary

Index

# Index





## A

Acquired Images ... 91  
Advanced Mode ... 13  
Advanced Mode button ... 14  
Advanced Mode Main Window  
... 16, 30  
All Reset button ... 42  
Auto Crop ... 82, 91  
Auto Crop Button ... 21  
Auto Tone ... 29  
Auto Tone Adjustment ... 91  
Auto Tone button ... 40  
Automatic Preview ... 38, 76, 91

## B

Bits and Bit Depth ... 91  
Black-point ... 47, 92  
Brightness ... 43, 92

## C

Calibration ... 37, 92  
Canon ColorGear Color Matching  
... 37, 77, 92  
Canon ImageTrust ... 26, 30, 92  
CanoScan Setup Utility CD-ROM  
... 79  
Channel ... 43, 44, 46, 48, 92  
Clear Button ... 19, 23  
Close Box ... 19

Close the ScanGear CS-U ...  
60, 64

Color Channels ... 93  
Color Management Settings ... 77  
Color Matching ... 40, 93  
Color Mode ... 26, 30, 93  
    Black and White ... 26, 30  
    Color (Documents) ... 26, 30  
    Color (Photos) ... 26, 30  
    Grayscale ... 26, 30  
    Text Enhanced ... 26, 30  
Color Settings ... 37  
ColorSync Color Matching  
    (Macintosh) ... 37, 93  
Contrast ... 43, 93  
Contrast/Brightness button ... 40  
Contrast/Brightness Sheet ... 43  
Crop ... 60, 64, 94  
Crop Button ... 20  
Curve chart ... 50, 94, 103  
Curve file ... 42, 94  
Custom curves ... 48, 94

## D

Default ... 94  
Descreen ... 35  
Digitizing ... 94  
dpi ... 94

## E

Edit Image Type Button ... 27  
End points ... 50, 95  
Events Settings ... 73  
    Disable device events ... 74  
    Scanner events ... 73  
    Send to this application ... 73  
Executive ... 28, 34, 95  
Eyedropper ... 95  
Eyedroppers ... 47

## F

Full Platen ... 28, 34, 95

## G

Gamma ... 45  
Gamma button ... 41  
Gamma Curve ... 95  
Gamma Sheet ... 44  
General Settings ... 72  
Grayscale ... 26, 30, 96

## H

Halftone Sheet ... 51  
Halftoning ... 51, 96  
Height ... 28, 96  
Help Button ... 22  
Histogram ... 96  
Histogram button ... 41  
Histogram Sheet ... 46

## I

Image Type ... 24

## K

Keep Proportions button ... 32, 96

## L

Load Button ... 42  
Low contrast ... 36, 96

## M

Magazine-Reduce Moiré /  
    Descreen ... 29, 96  
Main Sheet ... 30  
Mid-point ... 47, 96, 97  
Mid-tone ... 97  
Mirror Button ... 21  
Mode Switching Button ... 19  
Move Image Button ... 20  
Multi-Photo Mode ... 29, 66, 97

## N

Negative/Positive Button ... 21

## O

OCR (Optical Character Recognition) ... 97  
On-line Help ... 11  
Opening Scanners and Cameras Properties ... 70  
Optical resolution ... 97  
Output Dimensions ... 33, 97  
Output Resolution ... 31  
Output size ... 33, 98  
Overexposed ... 48, 98

## P

Paper Size ... 34  
Pixel ... 98  
Platen ... 98  
Plug-in ... 9, 98  
Pre-scan ... 59, 63  
Preferences (for Macintosh) ... 38  
Preferences Settings ... 75  
Preset Curves ... 48, 98  
Preview ... 59, 63  
Preview Area ... 19, 98  
Preview Button ... 19, 23  
Preview image cache ... 99  
Print Size ... 33  
    Scale ... 33  
    Width and Height ... 33  
Proportion ... 32, 99

## R

Remove Dust and Scratches ... 36, 99  
Reset ... 47  
Reset button ... 42  
Resolution ... 27, 99  
Rotate Left ... 99  
Rotate Left Button ... 21  
Rotate Right ... 99  
Rotate Right Button ... 22  
Rulers Button ... 22

## S

Sampling ... 99  
Save Button ... 42  
Scale ... 33, 100  
Scan ... 60, 64  
Scan Button ... 19, 23, 100  
Scan Resolution ... 100  
ScanGear CS-U main window ... 57, 62  
Scanner ... 100  
Scanner Gamma ... 45  
Scanner Sheet ... 34  
Scanners and Cameras properties ... 70  
Scanning area ... 60, 64  
Select Special Curve ... 48  
Selection ... 32  
    Keep Proportions button ... 32  
    Units ... 32  
    Width and Height ... 32  
Setting Tab ... 19

## Contents

## Troubleshooting

## Glossary

## Index

Simple Mode ... 13  
Simple Mode button ... 14  
Simple Mode Main Window ...  
    15, 24  
Simple Mode sheet ... 24  
Size ... 28  
Sliders ... 100  
Special Tone Curves ... 49  
Special Tone Curves buttons ... 41  
Special Tone Curves Sheet ... 48  
Start ScanGear CS-U ... 57, 61  
Statement ... 28, 34, 100  
Status Area ... 19, 100

## T

Test Scanner ... 37  
Test Scanner or Camera ... 72  
Text Enhanced ... 26, 30, 101  
Threshold ... 51, 101  
Title Bar ... 19  
Tone Curve ... 48, 101  
Tone Sheet ... 40, 101  
Toolbar ... 19, 20, 101  
TWAIN ... 9, 56, 102

## U

Underexposed ... 48, 102  
Uninstall ... 79  
Unsharp Mask ... 35, 102  
USB ... 102

## W

White-point ... 47, 102  
Width ... 28, 102  
Width-Height ratio ... 102  
Window Resize Corner ... 19

## X

X and Y Axes ... 103

## Z

Zoom Tool Button ... 21  
Zooming ... 103

# Customer Support Help Desk

## **CANON INC.**

30-2, Shimomaruko 3-chome, Ohta-ku  
Tokyo 146-8501, Japan

## **CANON U.S.A., INC.**

### **Digital Home and Personal Systems Division**

2995 Redhill Avenue  
Costa Mesa, CA 92626, U.S.A.  
1-800 OK CANON  
<http://www.ccsi.canon.com>

## **CANON CANADA INC.**

6390 Dixie Road, Mississauga  
Ontario L5T 1P7, Canada  
1-800 OK CANON  
<http://www.canon.ca>

## **CANON LATIN AMERICA, INC.**

6505 Blue Lagoon Drive, Suite 325  
Miami, Florida 33126, U.S.A.

## **CANON MEXICANA, S. de R.L. de C.V.**

Anillo Periferico Sur No. 4124, Torre Zafiro (II) Colonia  
Ex-Rancho de Anzaldo, Piso 5 y 6, Mexico D.F.  
Tel. (525) 5490-2000

## **CANON PANAMA, S.A.**

Apartado 7022, Panama 5  
Rep. de Panama  
Tel. (507) 279-8900

## **CANON CHILE, S.A.**

Ave. Manquehue Norte #1337, Piso 3, Casilla 187-9,  
Santiago, Chile  
Tel. (562) 366-6600

## **CANON ARGENTINA, S.A.**

Ave. Corrientes 420 (1043)  
Buenos Aires, Argentina  
Tel. (5411) 432-59800

## **CANON EUROPA N.V.**

P.O. Box 2262 1180 EG Amstelveen,  
The Netherlands

## **CANON (UK) LTD.**

Woodhatch, Reigate  
Surrey RH2 8BF, United Kingdom  
For technical support, please contact Canon Helpdesk.  
**Helpdesk:**  
P.O. Box 431, Wallington, Surrey SM6 0XU  
TEL: (08705) 143 723  
FAX: (08705) 143 340  
For sales enquiries: (0121) 666-6262

## **CANON COMMUNICATION & IMAGE FRANCE S.A.**

102 Avenue du Général de Gaulle  
92257 LA GARENNE COLOMBES CEDEX, France  
TEL: 01.41.30.15.15  
FAX: 01.41.30.15.05

## **CANON DEUTSCHLAND GmbH**

Postfach 528, 47705 Krefeld, Germany

### **CANON- Hotline-Service**

Customer Support: (0 21 51) 349-555  
Info-Desk: (0 21 51) 349-566  
Mailbox: (0 21 51) 349-577  
Telefax: (0 21 51) 349-588

## **CANON ITALIA S.p.A**

Palazzo L, Strada 6,  
20089 Milanofiori-Rozzano (MI), Italy  
TEL: 02/8248. 1 FAX: 02/8248. 4604  
Pronto Canon 02/8249. 2000  
<http://www.canon.it>

## **CANON BENELUX NEDERLAND N.V.**

Neptunusstraat 1, 2132 JA Hoofddorp  
The Netherlands  
Tel: 023-5 670 123 Fax: 023-5 670 124  
**Helpdesk:** 023-5 681 681

## **CANON BENELUX BELGIUM N.V./S.A.**

Bessenveldstraat 7, 1831 Diegem, Belgium  
Tel: 02 7220411 Fax: 02 7213274  
**Helpdesk:** 02 7220404

## **CANON GmbH**

Zetschegasse 11, 1232 Wien, Austria

## **CANON (SCHWEIZ) A.G.**

Industriestrasse 12, CH-8305 Dietlikon  
Switzerland  
Tel: (01) 835 61 61 Fax: (01) 835 68 60  
**Hotline:** 157 30 20

## **CANON ESPAÑA S.A.**

C/Joaquin Costa No 41, 28002  
Madrid, Spain  
**Help Desk:** 906.301255  
Tel.: 91-5384500 Fax.: 91-4117780

## **CANON DANMARK**

Vasekær 12, DK-2730 Herlev, Denmark  
**Hotline:** 44 88 26 66  
<http://www.canon.dk>

## **CANON NORGE AS**

Hallagerbakken 110, Boks 33, Holmlia, 1210 Oslo 12, Norway  
Tlf: 2262 9321 FAX: 2262 0615

## **CANON SVENSKA AB**

Gustav III:s Boulevard 26, S-169 88 Solna, Sweden  
Tel 08-744 85 00  
Fax 08-744 64 65  
<http://www.canon.se>

## **CANON OY AB**

Korvetintie, 3, 00380 Helsinki, Finland  
Puhelin: 010 544 20  
**Helpdesk:** 0600-0-22606  
(maksu 14,80 mk/min)  
Fax: 010 544 4571

## **CANON SINGAPORE PTE. LTD.**

79 Anson Road #09-01/06  
Singapore 079906  
<http://www.canon-asia.com>

## **CANON MARKETING SERVICES PTE. LTD.**

No. 1, Jalan Kilang Timor  
#09-00 Pacific Tech Centre  
Singapore 159303  
Tel: 65-7998888, Fax: 65-2736786,  
**Hotline:** 65-3342726  
<http://www.canon.com.sg>

## **CANON MARKETING (MALAYSIA) SDN. BHD.**

Block D, Peremba Square  
Saujana Resort, Section U2, 40150 Shah Alam  
Selangor Darul Ehsan, Malaysia  
Tel: 603-7446000, Fax: 603-7446048,  
**Helpdesk:** 603-7446008/9  
Enquiry: [print&scan@canon.com.my](mailto:print&scan@canon.com.my)  
<http://www.canon.com.my>

## **CANON MARKETING (THAILAND) CO. LTD.**

179/34-45 Bangkok City Tower, 9th-10th Floor  
South Sathorn Road, Thungmahamek,  
Sathorn, Bangkok 10120, Thailand  
Tel: 662-3449999, Fax: 662-3449968  
<http://www.canon.co.th>

## **CANON MARKETING (PHILIPPINES) INC.**

Marvin Plaza Building, 2153 Don Chino Rocas Ave,  
Makati City, Metro Manila, Philippines  
Tel: 632-8126047, Fax: 632-8120067/8109797

## **CANON INDIA PVT LTD.**

Neela Gagan, Mandi Road,  
Mehrauli, New Delhi-110030, India  
Tel: 91-11-6806572, Fax: 91-11-6807180

## **CANON HONGKONG CO., LTD.**

9/F, The Hong Kong Club Building  
3A Chater Road, Central, Hong Kong  
TEL: (852) 2739 0802  
FAX: (852) 2739 6428

## **CANON AUSTRALIA PTY. LTD.**

1 Thomas Holt Drive, North Ryde, Sydney N.S.W. 2113,  
Australia  
Info-Line: (02) 9805 2864

## **CANON NEW ZEALAND LTD.**

Fred Thomas Drive, Takapuna  
P.O. Box 33-336, Auckland, New Zealand  
Info-Line: 0900-522666

## **ADOBE SYSTEMS INCORPORATED**

<http://www.adobe.com>

## **ARCISOFT, INC.**

<http://www.arcsoft.com>

## **SCANSOFT, INC.**

<http://www.scansoft.com>