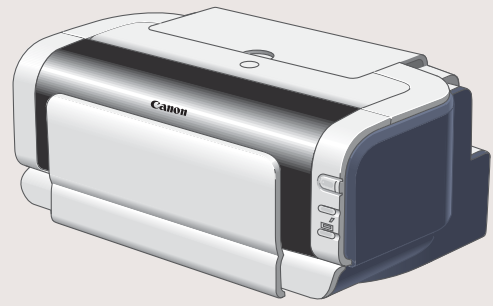
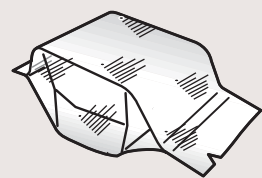


1 Unpack the Printer

- 1 Carefully remove all items from the box.



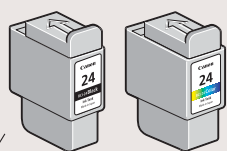
PIXMA iP2000
Photo Printer



Print Head



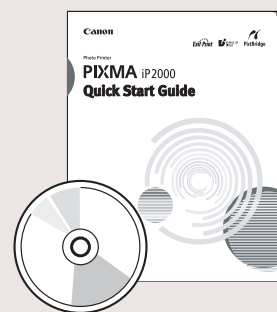
Power Cord



Ink Tanks

BCI-24 Black

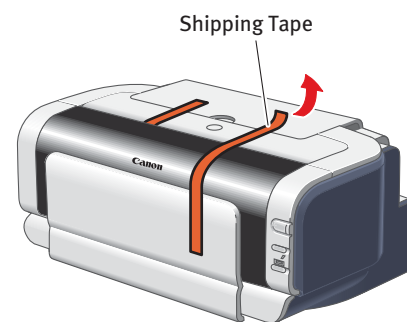
BCI-24 Color



Documentation
and Software Kit

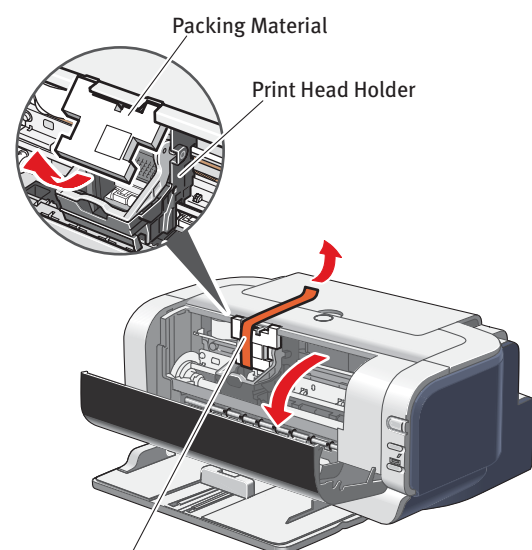
2 Prepare the Printer

- 1 Remove all shipping tape from the printer.



Shipping Tape

- 2 Open the front sheet feeder and the front cover. Remove the shipping tape and packing material from the print head holder.

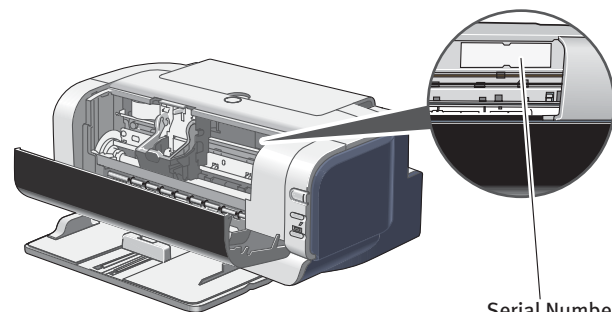


Packing Material

Print Head Holder

Shipping Tape

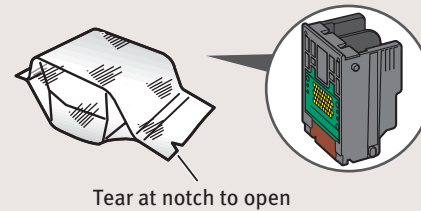
- 3 Write down the serial number located to the right of the print head holder. You will need this to register the product.



Serial Number

3 Install the Print Head

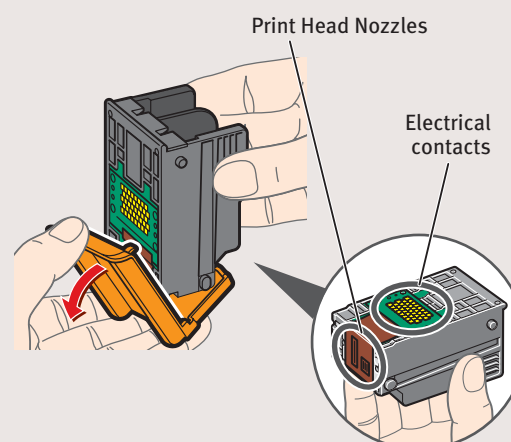
- 1 Remove the print head from its package.



Tear at notch to open

- 2 Remove the orange protective cap.

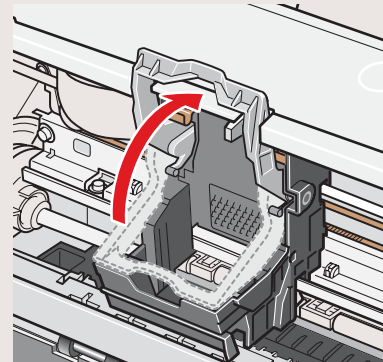
NOTE: Do not touch the electrical contacts or print head nozzles.



Print Head Nozzles

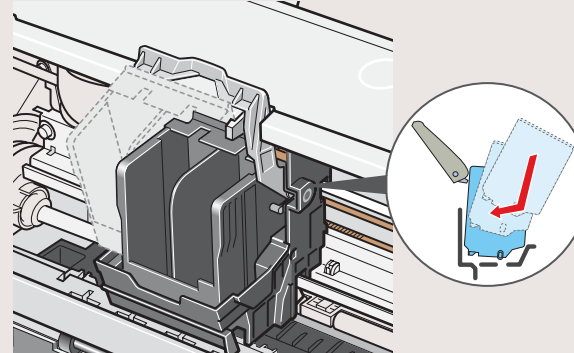
Electrical contacts

- 3 Raise the gray lock lever on the printer.

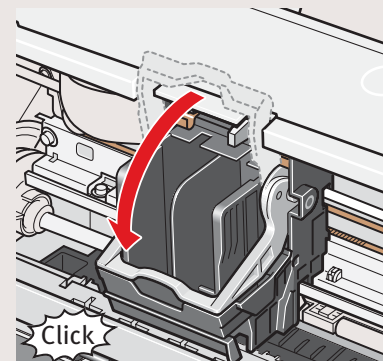


IMPORTANT: Ensure that the gray lock lever is raised into the notches located above the print head holder before proceeding or the print head may not install correctly.

- 4 Slide the print head into the holder until it is securely seated. Do not press it down



- 5 Lower the lever until it clicks into place.

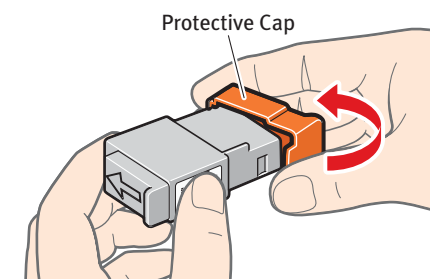


Click

4 Install the Ink Tanks

- 1 Remove the black ink tank (BCI-24 Black) from its package and pull off the orange protective cap.

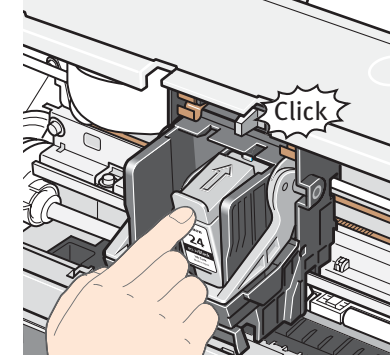
NOTE: To avoid spilling ink, do not touch the bottom of the tank once you have removed the protective cap.



Protective Cap

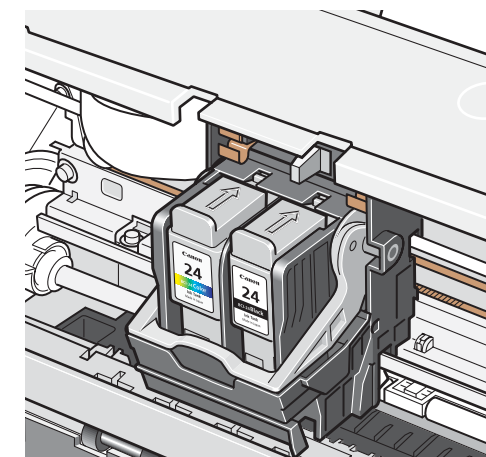
- 2 Insert the black ink tank (BCI-24 Black) into the slot on the right. Then press in until the ink tank clicks into place.

IMPORTANT: For correct printer operation, make sure ink tanks are secure in slots.



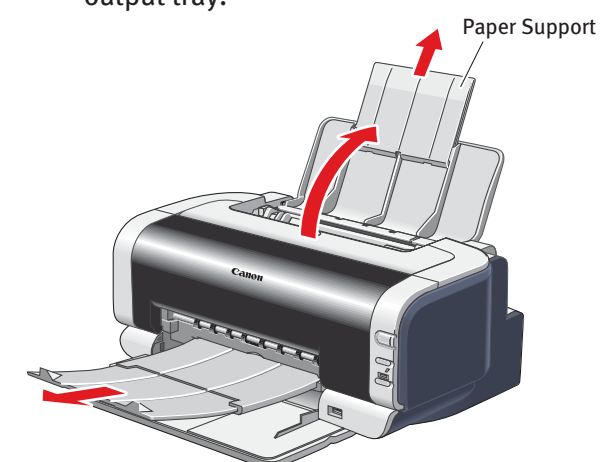
Click

- 3 Repeat the procedure for the color ink tank (BCI-24 Color), inserting it into the remaining slot.



- 4 Close the front cover.

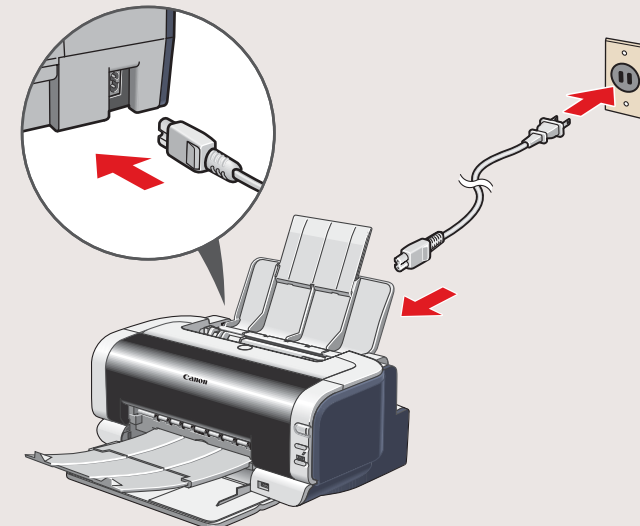
- 5 Open the paper support and pull out the output tray.



Paper Support

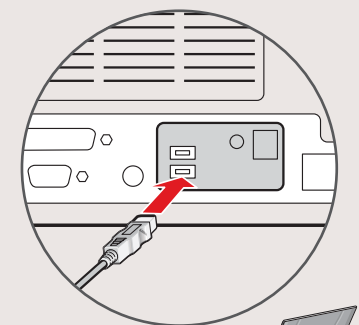
5 Connect the Printer And Load Paper

- 1 Plug the power cord into the back of the printer and connect the other end to a power outlet.



IMPORTANT: BE SURE THE PRINTER IS OFF, or the computer will attempt to install the printer driver before the printer is ready.

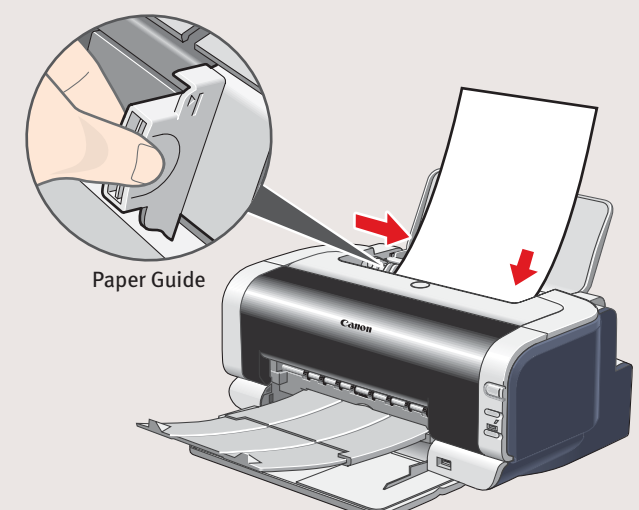
- 2 Connect one end of a USB cable to the computer, the other to the printer.



USB Cable

USB Port

- 3 Pinch the paper guide and slide it to the left. Load a sheet of blank paper in the paper support. Slide the guide toward the left edge of the paper.




Paper Guide


Continue with Step 6
on side two.

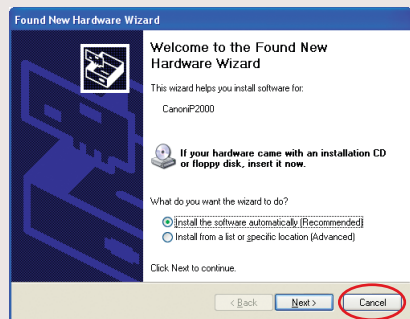


6 Windows® Printer Driver Installation


- 1 Turn the computer on and **LEAVE THE PRINTER OFF**.

 **NOTE:** For Windows® XP or Windows 2000, log on to Windows as an Administrator before continuing.

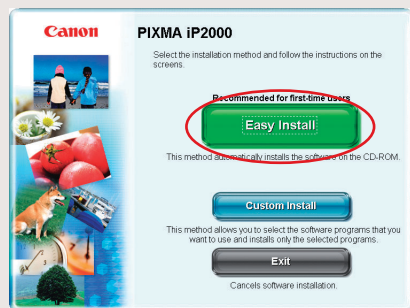
 **IMPORTANT:** If you see the Found New Hardware Wizard, click **Cancel**.




- 2 Close any open software applications including anti-virus, computer security and other software. Then insert the “Setup Software & User’s Guide” CD-ROM. The setup program should run automatically.

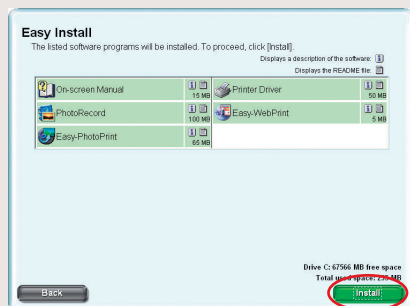
 **NOTE:** If the setup does not run automatically, click **Start**, then **Run**, then type **D:\msetup.exe**, where **D** is your CD-ROM drive.

- 3 When the main menu appears, click **Easy Install** and follow on-screen instructions.



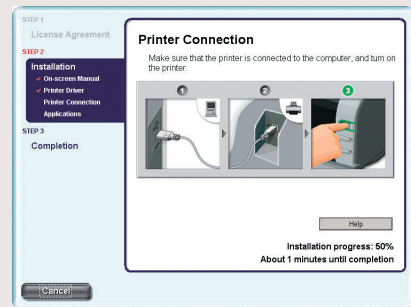
 **NOTE:** Select **Easy Install** in order to install application software, electronic manual and printer driver. Select **Custom Install** in order to choose the options you would like to install.

- 4 When the “Easy Install” window appears, click **Install**.



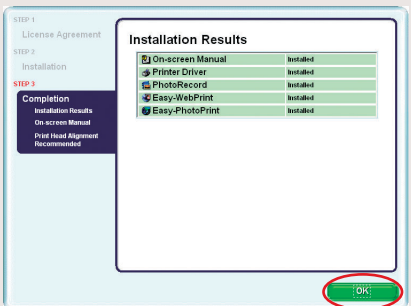
- 5 Read the License Agreement, then click **Yes** to continue. Then, installation of the driver and electronic instruction manual starts.

- 6 When the “Printer Connection” window appears, **TURN THE PRINTER ON**. The printer will initialize for about one minute.




 **IMPORTANT:** If your computer cannot detect a computer port, click **Help** and refer to the online instructions.

- 7 Follow the on-screen instructions to install the remaining software. When the "Installation Results" window appears, click **OK**.




- 8 Follow the on-screen instructions to register your product.

- 9 When the “Installation completed successfully” window appears, click **Exit**.

 **NOTE:** If a message prompting you to restart the computer appears, click **Restart**.




 **NOTE:**

- When you print out for the first time, it takes approximately one minute until the printer starts printing.
- If print quality is not satisfactory after installing the printer, you may need to align the print head. Refer to “Aligning the Print Head” instructions in your *Quick Start Guide*.

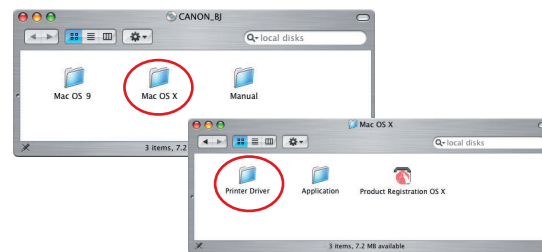
6 Mac® OS X Printer Driver Installation

 **NOTE:** For Mac OS 9.x printer driver instructions, refer to the “Appendix” of the *Quick Start Guide*.

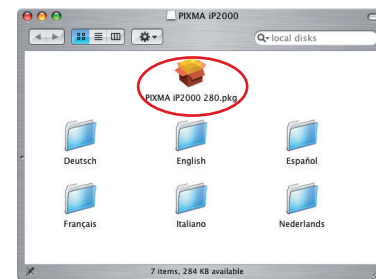
- 1 Turn on your Mac and your printer and insert the “Setup Software & User’s Guide” CD-ROM.



 **NOTE:** The printer will initialize for about one minute.

- 2 Double-click the CD-ROM icon, then the **Mac OS X** folder, then the **Printer Driver** folder.



- 3 Double-click the **PIXMA iP2000 280.pkg** icon.

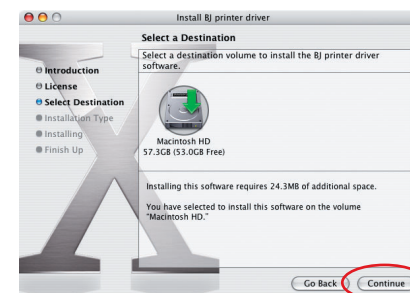


 **NOTE:** When the “Authenticate” screen appears, enter your administrator name and password. If you do not know your administrator name or password, click , then follow the on-screen instructions.



- 4 When the “Welcome to the BJ printer driver Installer” screen appears, click **Continue**.

- 5 Read the Software License, click **Continue**, and then click **Agree**.

- 6 Select a destination for the printer driver to be installed. Then click **Continue**.



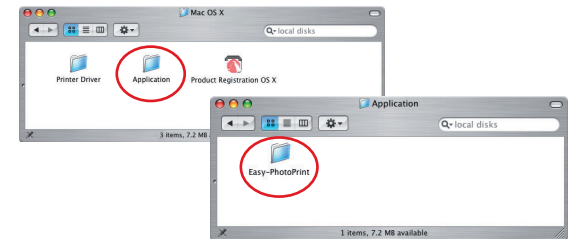
- 7 Click **Install**. When the “Authenticate” screen appears, enter your administrator name and password, then click **OK**.

 **NOTE:** If you do not know your administrator name or password, click , then follow the on-screen instructions.

- 8 When a message asking for your confirmation to proceed with the installation, click **Continue Installation**.


- 9 When the message “The software was successfully installed” appears, click **Restart**.

- 10 Access your CD-ROM again. From the **Application** folder, double-click the **Easy-PhotoPrint** icon. Follow the on-screen instructions.



- 11 When the “Installation is completed” screen appears, click **OK**.

- 12 Double-click on the **Product Registration** icon, found in the **Mac OS X** folder, to register your product.

 **NOTE:**

- When you print out for the first time, it takes approximately one minute until the printer starts printing.
- If print quality is not satisfactory after installing the printer, you may need to align the print head. Refer to “Aligning the Print Head” instructions in your *Quick Start Guide*.