



Photo Application Guide



Table of Contents



Introduction to Photo Applications	4
Printing with ZoomBrowser EX	6
Basic Operation Procedure	9
Using Canon Utilities	13
Starting ZoomBrowser EX	14
Creating Panoramic Photo Using PhotoStitch	18
What is Easy-PhotoPrint?	19
Using ZoomBrowser EX	20
Basic Operations in the Browser Display Area	21
Changing View Mode in the Browser Display Area	24
Image Database	27
Processing Image Using Image Viewer	43
Slide Show	47
Time Tunnel	51
Adding Sound to Image	52
Processing Image for Sending by E-mail	55
Editing Image Using Other Image Processing Programs	58
Importing Images	60
Importing Images with the Automation Wizard	61
Setting the Automation Wizard to Download Images	65

Importing Images Using the Camera Window	69
Importing Images from a TWAIN Device	84
Importing Images by Drag-and-Drop Operation	86
Printing from PhotoRecord	88
Printing a Photo Index (Index Printing)	89
Custom Layout Printing (Artwork/Layout Album)	97
Printing in a Specified Photo Size (Fixed Photo Size Printing)	102
Printing in the Borderless Printing Mode (Tiled Photo)	107
Printing on Canon Perforated Paper	112
About Canon Perforated Paper	116
Starting Printing	117
Artwork	118
Page Art	121
Changing Layout	128
Adding Text	136
Clipping a Photo	150
Printing with Easy-PhotoPrint	152
Starting Easy-PhotoPrint	153
Selecting Images	154
Selecting Paper	156
Layout Printing	158
How to Use Online Help	160
Index	165

Introduction to Photo Applications



Easy-PhotoPrint

Easy-PhotoPrint is a handy application program that allows you to make borderless (full page) prints from the images you recorded with your digital camera. You can make prints easily, just by selecting image data and paper size and type.

Easy-PhotoPrint also has simple editing functions such as trimming and rotation of images.

Easy-PhotoPrint supports Exif Print (Exif 2.2). The image captured with an Exif Print-compliant digital camera can be optimized using data, such as camera settings (white balance, exposure time) etc, stored at the same time of shooting, yielding extremely high-quality prints.



ZoomBrowser EX

ZoomBrowser EX is an application program that displays the images (stored in the memory card) you recorded with your digital camera as thumbnails, allowing you to import the selected images into your computer and view, manage, and edit them. ZoomBrowser EX also allows you to process the image files already stored in the computer in the same manner.

The image data selected with ZoomBrowser EX can be edited using another application program in a coordinated fashion.



PhotoRecord

PhotoRecord allows you to make photo-quality prints from the image data you selected with ZoomBrowser EX. PhotoRecord can make an index print, print multiple images on a sheet of paper with them laid out automatically, or print images on Canon perforated paper. With PhotoRecord, you can add a frame, background, and/or letters to your photo. PhotoRecord also supports basic editing functions such as trimming, rotation, color adjustment.



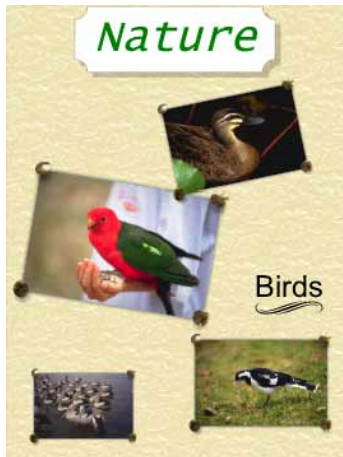
PhotoStitch

PhotoStitch allows you to make a panoramic photo from the images you recorded with your digital camera. PhotoStitch can merge separate images into a panoramic image. With PhotoStitch, you can make a panoramic photo of a grand view spreading out 360-degrees around you. A desired number of images can be easily stitched vertically or horizontally, allowing you to take full advantage of digital photo printing (for example, you can make unique posters with ease). The Wide mode is useful when you want to create a wide panoramic photo of buildings and other straight-lined objects with straight lines as natural as the original.

Printing with ZoomBrowser EX

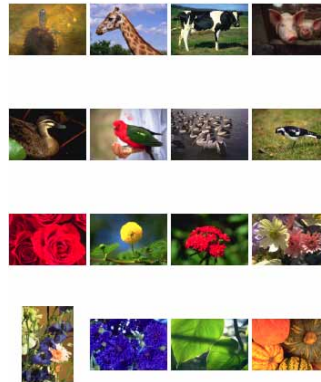
ZoomBrowser EX enables you to import image data captured with digital cameras or scanners into a computer and produce photo-quality printouts in a quick and easy fashion. Using ZoomBrowser EX with a Canon BJ printer and a scanner or digital camera, you can enjoy superb-quality photo prints.

[Custom Layout Printing](#) [\(Artwork/Layout Album\)](#)



You can arrange images in a desired layout and apply artwork including clipping, resizing, rotation, text insertion, and ornamentation with photo frames and background.

[Printing a Photo Index](#) [\(Index Printing\)](#)



You can print a photo index that contains thumbnails automatically arranged in a suitable layout for the selected thumbnail size (large, medium, or small).

Printing in a Specified Photo Size (Fixed Photo Size Printing)



You can print images in the specified photo size.

Printing in the Borderless Printing Mode (Tiled Photo)



You can print images with no margins around each image, so that a single image is printed borderless along the paper edges and multiple images are arranged like tiles with no space between them (available with BJ printers that support the borderless printing feature).

Printing on Canon Perforated Paper



You can easily make your images fit on a sheet of Canon perforated paper such as <FM-101> or <PC-101S>.

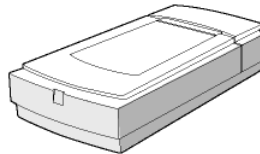
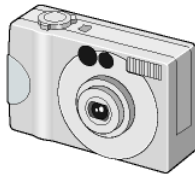
Basic Operation Procedure

The basic operation steps to capture, import, edit, and print photo images are summarized below.

STEP 1 Shooting / scanning



Acquire images with a digital camera or a scanner.



STEP 2 Importing images

Start ZoomBrowser EX.



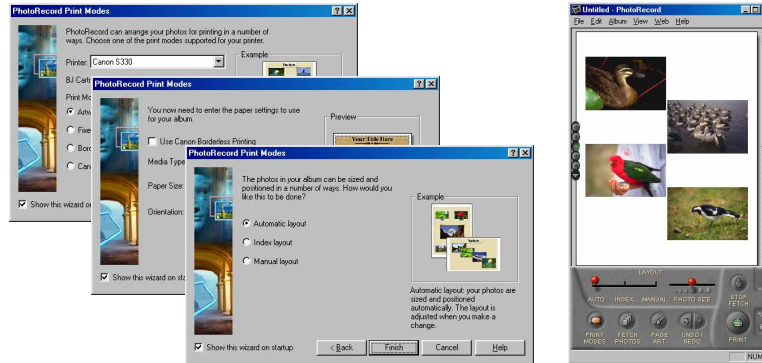
Using the Camera Window, import images from a memory card or a digital camera.

ZoomBrowser EX supports some simple image editing features.

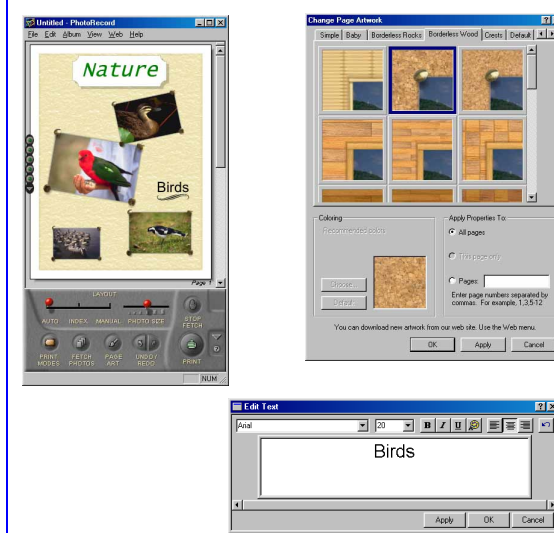
The Automation wizard provides easy means of importing images.

STEP 3 Selecting a layout

Specify the print mode. Just follow the wizard to select a print mode option from Artwork/Layout album, Index printing, Fixed photo size printing, Borderless printing (Tiled photo), and Canon perforated paper printing.

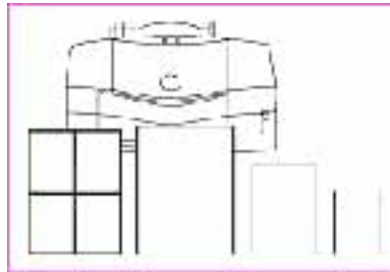


STEP 4 Applying artwork



You can apply artwork including clipping, resizing, adding text, and ornamentation such as adding photo frames or background to the imported images.

STEP 5 Printing



The images can be printed on Canon perforated paper (such as Photo Paper Pro <PC-101S> or Glossy Photo Card <FM-101>). Borderless printing is also supported.

*Some features and paper sizes may not be supported depending on the models of printers.

Using Canon Utilities



Canon Utilities are the application software included in the BJ Solution Disk or Setup Software & User's Guide in the CD-ROM that comes with your BJ series printer. These utilities enable you to display, save (import) to the computer's hard disk, edit, print the images captured using a digital camera or scanner.

For the summary of each function, refer to [Introduction to Photo Applications](#).

- [Starting ZoomBrowser EX](#)
- [Creating Panoramic Photo Using PhotoStitch](#)
- [What is Easy-PhotoPrint?](#)

Starting ZoomBrowser EX

This section describes how to start ZoomBrowser EX.

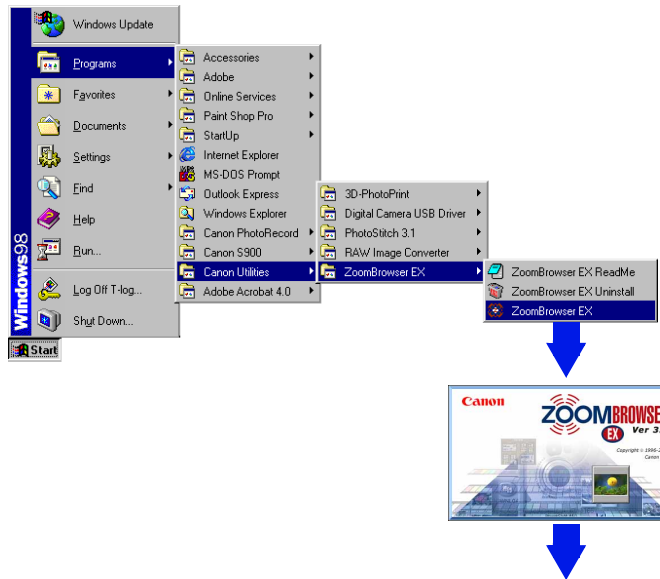
ZoomBrowser EX supports the following image file types:

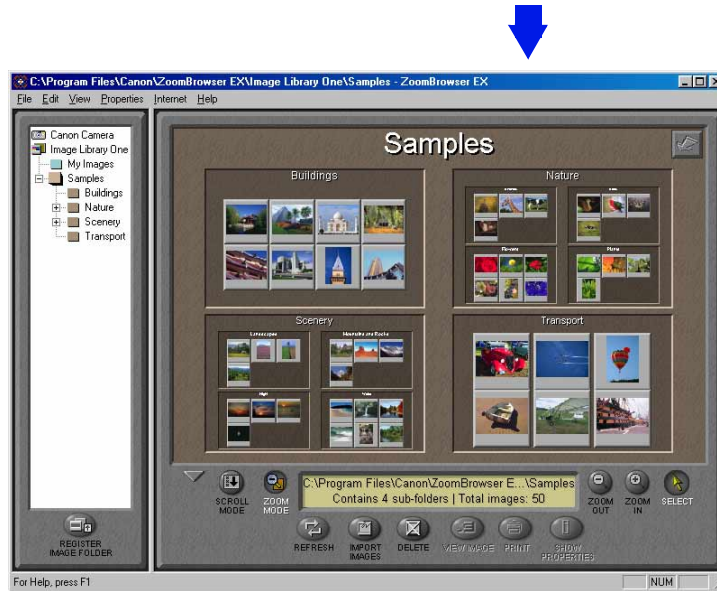
bmp	Windows bitmap
crw	RAW
fpx	Flachpix
jpg	Joint Photographic Experts Group (JPEG)
tif	Tagged Image File Format (TIFF)
pcd	KODAK Photo CD
wmf	Windows Metafile

Steps

- 1 Click **Start** and select **Programs - Canon Utilities - ZoomBrowser EX - ZoomBrowser EX**.

ZoomBrowser EX starts and ZoomBrowser EX application window opens.

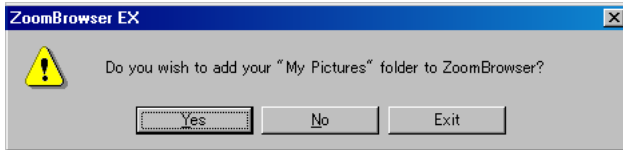




Note ➤ To learn more about the main window, refer to [Basic Operations in the Browser Display Area](#).

When starting ZoomBrowser EX for the First Time...

When starting ZoomBrowser EX for the first time, you will see a message window as shown below.



Click the **Yes** button to register the Windows folder named My Picture as an Image Folder of ZoomBrowser EX. This folder will become an image data storage folder and images imported from a digital camera or scanner can be stored in this folder. ZoomBrowser displays the thumbnails of the images stored in this folder in the Browser Display Area.

Click the **No** button, if you do not want to register the My Picture folder to the ZoomBrowser EX.

This message appears only when the ZoomBrowser EX is started for the first time.

For more detailed information on registering Image Folders, refer to [Image Database](#).

Creating Panoramic Photo Using PhotoStitch

PhotoStitch is an easy-to-use image merger utility which enables you to create a panoramic photo by merging multiple photos taken with a digital camera.

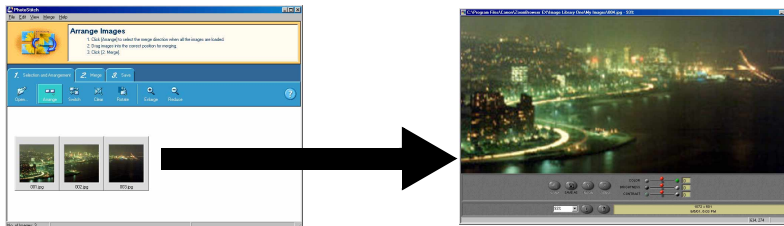
Steps

- 1 In the Browser Display Area of the ZoomBrowser EX, select multiple photo images (thumbnails) to merge.



- 2 Open the **Edit** menu and select the **PhotoStitch** command.

PhotoStitch starts and loads the selected photo images.



Merge as many images as you like either vertically or horizontally by a simple operation, and create posters and other photo-prints. Also try the wide-mode merging which shows buildings and other straight-lined objects with straight lines as natural as the original.

For more details on the merging procedure, refer to the Help of PhotoStitch.

What is Easy-PhotoPrint?

Easy-PhotoPrint allows you to make borderless prints simply by selecting your digital camera images and the paper size and type. Easy-PhotoPrint is useful when you want to make prints quickly. Easy-PhotoPrint also has simple editing functions such as trimming and rotation of images. Easy-PhotoPrint supports Exif Print.



Note ➤ For details on the operation procedure, refer to [Printing with Easy-PhotoPrint](#).

Using ZoomBrowser EX



This chapter describes the basic operations and the functions of the ZoomBrowser EX.

- Basic Operations in the Browser Display Area
- Changing View Mode in the Browser Display Area
- Image Database
- Processing Image Using Image Viewer
- Slide Show
- Time Tunnel
- Adding Sound to Image
- Processing Image for Sending by E-mail
- Editing Image Using Other Image Processing Programs

Basic Operations in the Browser Display Area

Part names and basic operations in the Browser Display Area are described in this section.

For more detailed information on working with ZoomBrowser EX, refer to the Help of ZoomBrowser EX.

Tree View

Displays all the Image Folders and their subfolders that are registered to ZoomBrowser EX.

When a Canon digital camera is connected to your computer, double-click the Canon Camera icon, and you can view all the photos stored in the memory card of camera in the Camera Window.

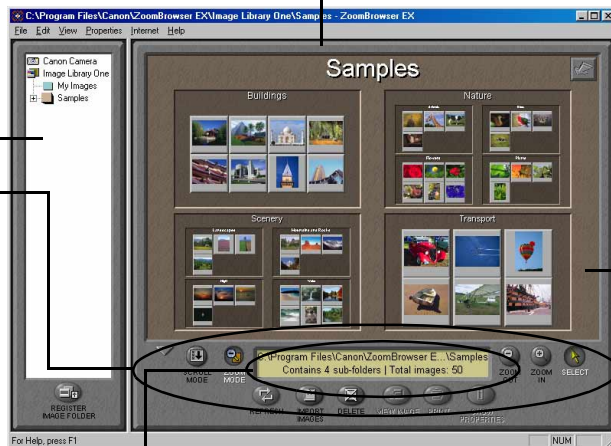
Browser Display Area

Displays the contents of the Image Folder that is currently selected in the Tree View. Individual images are shown as thumbnails. You can change the thumbnail size, the way the information is displayed, the viewing modes, and other settings.

Control Panel

Control buttons are provided here. Manage and process images shown in the Browser Display Area by clicking these buttons.

The information screen shows the number of subfolders and image files contained in the current folder.



Thumbnails

Reduced images of the files contained in the folder that is currently selected in the Tree View. You can select images for processing by clicking the thumbnails. To select two or more images, click the thumbnails one by one while pressing the Ctrl key.

MINIMIZE buttons

Click this button to reduce the Control Panel into a miniature window (see the figure on the right). You can mouse-drag it anywhere on the computer screen.



View Mode buttons

ZOOM MODE

Click the **ZOOM MODE** button on the Control Panel to enter the Zoom mode. The Zoom mode displays the images contained in the folder currently selected in the Tree View, in the reduced form of thumbnails. If the folder contains subfolders, the contents of the subfolders are also displayed, as thumbnails grouped under subfolder names.

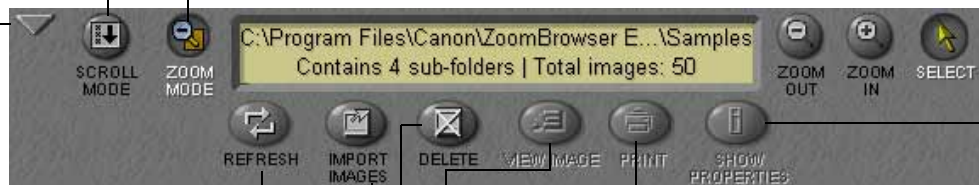
SCROLL MODE

Click the **SCROLL MODE** button on the Control Panel to enter the Scroll mode. The Scroll mode displays the images and subfolders contained in the folder currently selected in the Tree View. The images are shown as thumbnails, while the subfolders are shown as folder icons.

When in the Scroll Mode, you can zoom in on a desired folder and view its contents, by double-clicking the folder.

SHOW PROPERTIES button

Click this to view the information about the image currently selected in the Browser Display Area.



REFRESH button

Click this to refresh the display of selected images (thumbnails) or the contents of the selected folder.

IMPORT IMAGES button

Click this to import images from an input device (digital camera, memory card, etc.), currently connected to the computer.

DELETE button

Click this to delete the images or folders currently selected in the Browser Display Area.

PRINT button




Click this to open the Print submenu in which you can select Layout or Index printing option. When Layout is selected, the PhotoRecord Print Modes window opens and the Print Modes wizard becomes ready to start.

VIEW IMAGE button

Click this to open the Image Viewer and view the selected image.

Tool switching buttons

Click these buttons to select a tool (mouse pointer) used in the Browser Display Area.

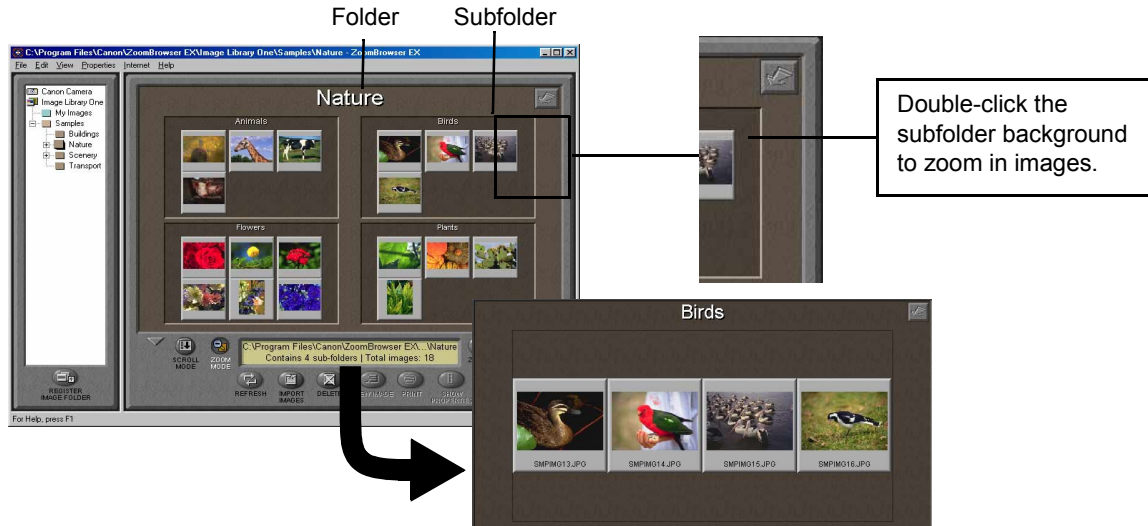
Button	Name	Function
	SELECT button	Turns the mouse pointer into a selection tool. Select this tool for the usual operations in ZoomBrowser EX, for example, selecting images and folders.
	ZOOM IN button	Turns the mouse pointer into a zoom-in tool. Select this tool for zooming in or (enlarging) the images (thumbnails) in the Browser Display Area.
	ZOOM OUT button	Turns the mouse pointer into a zoom-out tool. Select this tool for zooming out or (reducing) the images (thumbnails) in the Browser Display Area.

Changing View Mode in the Browser Display Area

There are two View Mode buttons in the Control Panel, the **SCROLL MODE** button and the **ZOOM MODE** button.

■ Zoom Mode

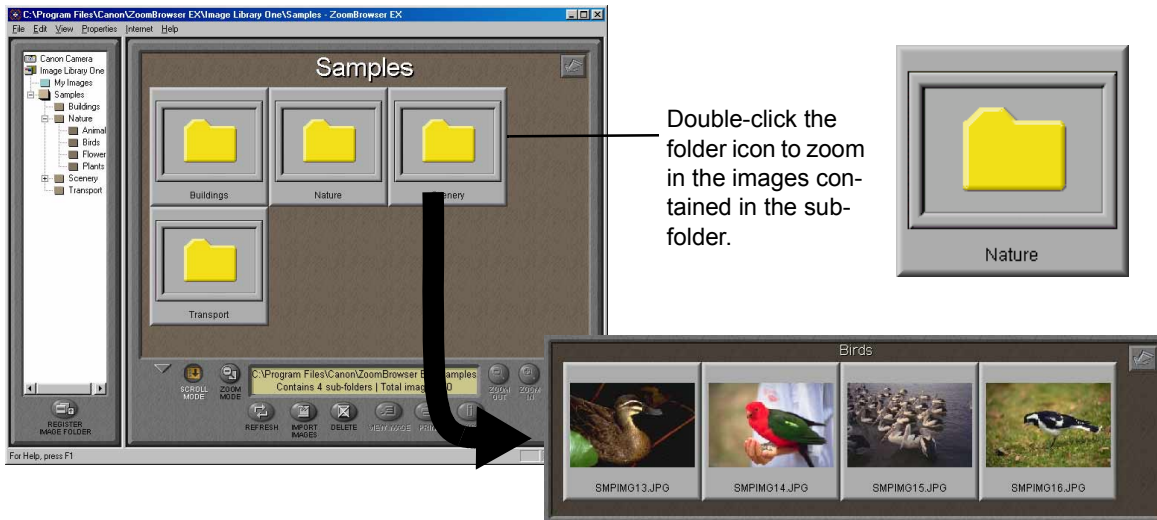
Click the **ZOOM MODE** button on the Control Panel to enter the Zoom mode. The images contained in the folder selected in the Tree View are displayed in the reduced form of thumbnails. If the folder contains subfolders, the contents of the subfolders are also displayed, as thumbnails grouped under subfolder names.



To zoom out the magnified images, click the  button on the top-right corner of the Browser Display Area.

■ Scroll Mode

Click the **SCROLL MODE** button on the Control Panel to enter the Scroll mode. The images in the selected folder or subfolders contained in the selected folder are displayed. The images are shown as thumbnails, while the subfolders are shown as folder icons. When in the Scroll Mode, you can zoom in the images contained a subfolder by double-clicking the folder icon. This enlarges the view of the folder contents until it fills the Browser Display Area.



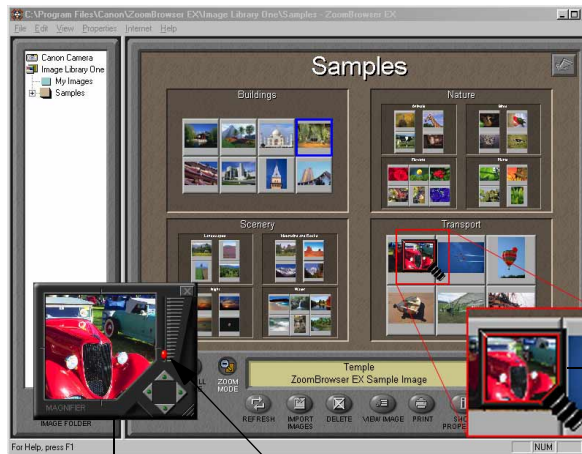
Using Magnifier glass

Some thumbnails are displayed smaller than others, depending on the folder structure. The Magnifier is a convenient tool for viewing small thumbnails.

To use the Magnifier, select the **Magnifier** from the **View** menu.

You can move the Magnifier glass over the Browser Display Area by dragging it with the mouse. When you want to have a closer look, point the glass to a thumbnail, and view the enlarged image in the Magnifier window.

To return to the normal view, close the Magnifier window, by clicking the Close button on the top right corner of the **MAGNIFIER** window.



MAGNIFIER window

Use the slide control to increase or decrease the magnification.

Image Database

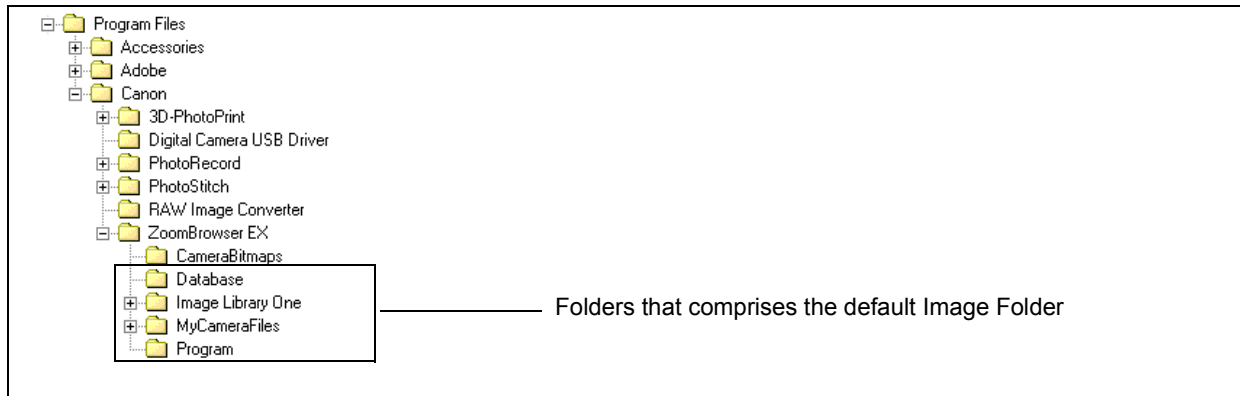
Registering Image Folders is a necessary procedure, if you have image data stored in your hard disk folders or on removable volumes, and if you want to process, print or manage them from ZoomBrowser EX. First register the folder/volume which you want to store the image data.

When a folder on the hard disk is registered as an Image Folder, you can save folders and images in that Folder from the ZoomBrowser EX window. Image data imported from a memory card of digital camera or other input devices will be saved as image files in those registered Image Folders.

Image Library One

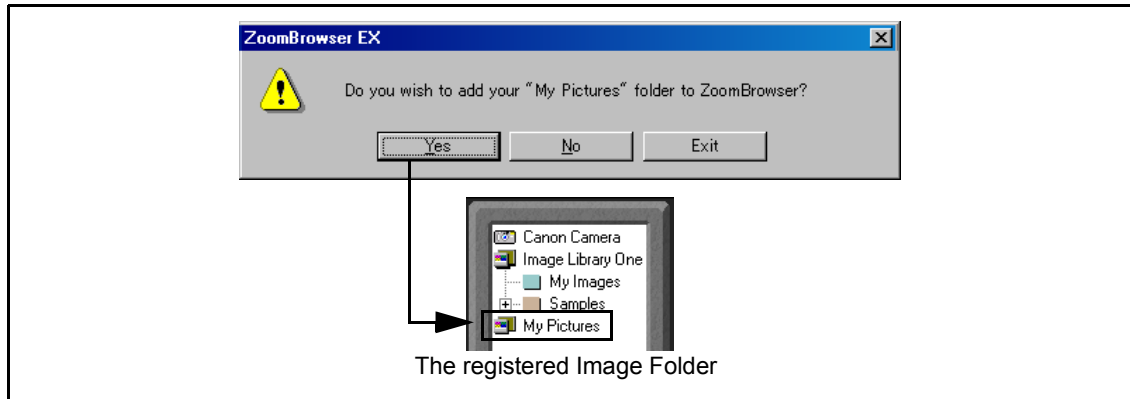
When ZoomBrowser EX is installed in your computer, it automatically creates a default folder named Image Library One, where it copies its sample image files.

Under this default Folder, you can create a new folder and save the imported images. You can also create a new Image Folder besides the default one.



Registering the My Pictures folder as an Image Folder

On starting ZoomBrowser EX for the first time, a message box appears and asks you if you want to register the My Pictures folder to the ZoomBrowser EX. If you click **Yes** here, the Windows folder named My Pictures will be registered as an Image Folder and displayed in the Tree View.



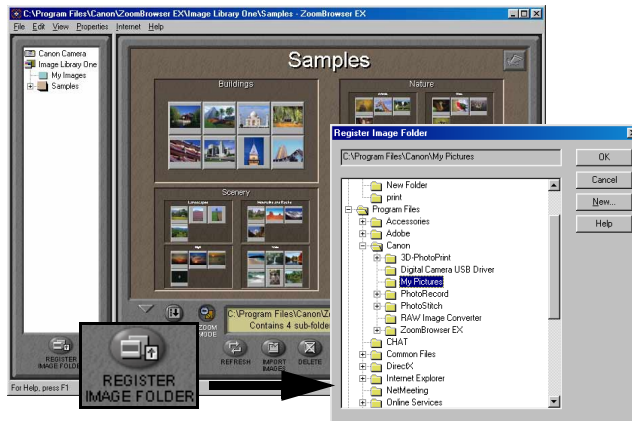
Registering Folders on the Hard Disk as Image Folders

You can select folders on your hard disks and register them as new Image Folders.

To learn how to register removable volumes such as CDs, MOs and FDs, refer to [Registering Removable Volumes as Image Folders](#).

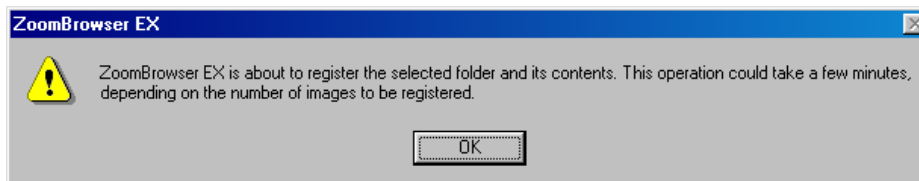
Steps

- 1 Start ZoomBrowser EX.
To learn how to start ZoomBrowser EX, refer to [Starting ZoomBrowser EX](#).
- 2 Click the **REGISTER IMAGE FOLDER** button.
The **Register Image Folder** dialog box appears.



- 3 From the **Register Image Folder** dialog box, select the folder which you want to register as an Image Folder, and click the **OK** button.

The registration message box appears.



- 4 Click the **OK** button.

The selected folder will be registered as an Image Folder.

Note ➤ If the selected folder contains any subfolders or image files, the ZoomBrowser EX database will automatically register those subfolders and image files.

Registering Removable Volumes as Image Folders

You can register removable volumes such as CDs, MOs and FDs, as new Image Folders.

When a volume is registered as an Image Folder, the database acquires its file information, including the thumbnails, file names and dates of the creation of image data. This enables you to view and check the contents of the registered volume from the computer screen, even if the volume itself is not loaded.

To learn how to register folders that are on your hard disks, refer to [Registering Folders on the Hard Disk as Image Folders](#).

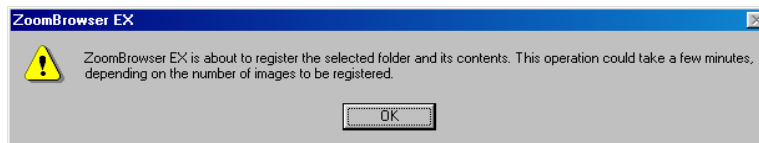
Steps

- 1 Load the removable volume which you want to register into the media drive.
Be sure to load it before starting ZoomBrowser EX.
- 2 Start ZoomBrowser EX.
To know how to start ZoomBrowser EX, refer to [Starting ZoomBrowser EX](#).

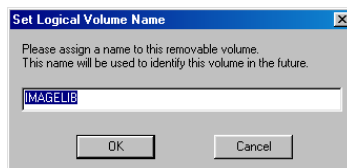
- 3 Click the **REGISTER IMAGE FOLDER** button.
The **Register Image Folder** dialog box appears.



- 4 Select the removable drive, and click the **OK** button.
The registration message box appears.

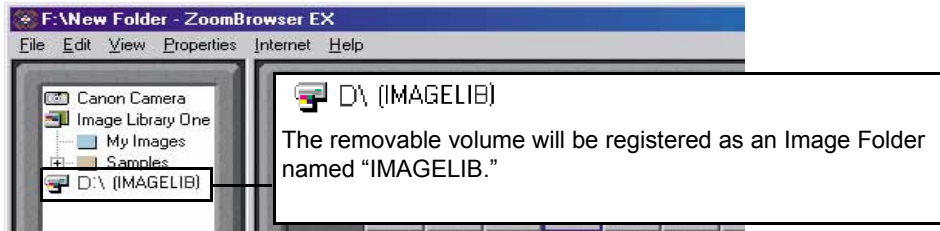


- 5 Click the **OK** button.
The **Set Logical Volume Name** dialog box appears.



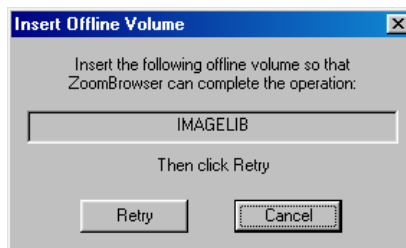
6 Type in a name for the current volume, and click the **OK** button.

This registers the volume as an Image Folder. The database acquires information about all the folders and image files contained in that particular volume.



Note ➤ If the selected volume has already been given a volume label, the dialog box displays that volume label as the default name. You can change it if you like, since a removable volume name is not the same thing as a volume label.

Note ➤ When working with images in a registered removable volume, for example, viewing them in the Image Viewer, or processing or printing them, you need the volume actually loaded onto the media drive. If you select an image and try to execute one of these operations without loading the volume, a message window prompts you to load it, as shown below.



Insert the volume and click the **Retry** button to load the image to the ZoomBrowser EX.

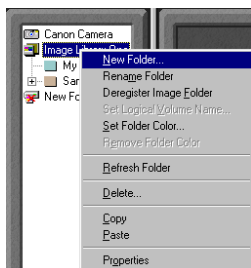
Creating New Folders

You can create a new folder within a registered Image Folder or its subfolder.

Steps

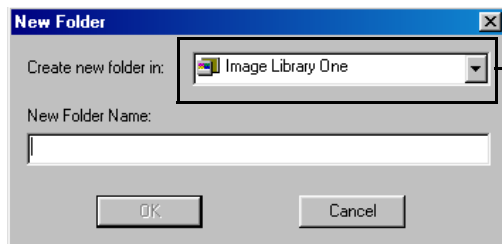
- 1 On the Tree View, select and right-click with the mouse an Image Folder or a subfolder within which you want to create a new folder.

The pop-up menu opens.



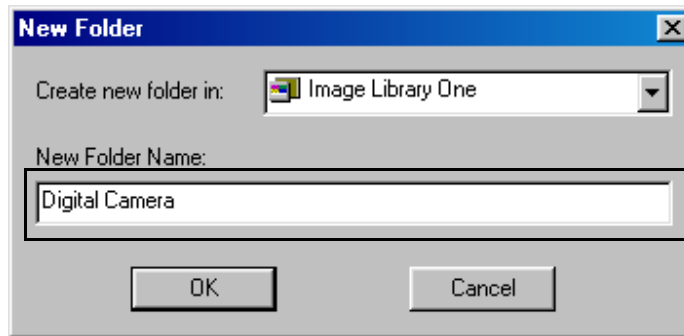
- 2 Select the **New Folder** from the menu.

The **New Folder** dialog box opens.



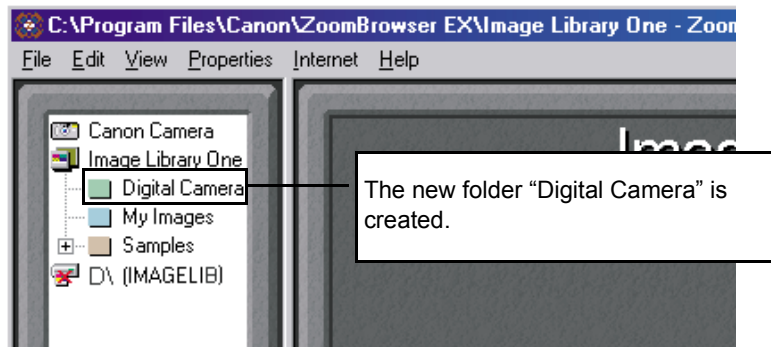
The selected Image Folder or subfolder is displayed here. You can change the location of the new folder to create by specifying a desired folder from the **Create new folder in** drop-down list.

- 3 Type in the name for a new folder.



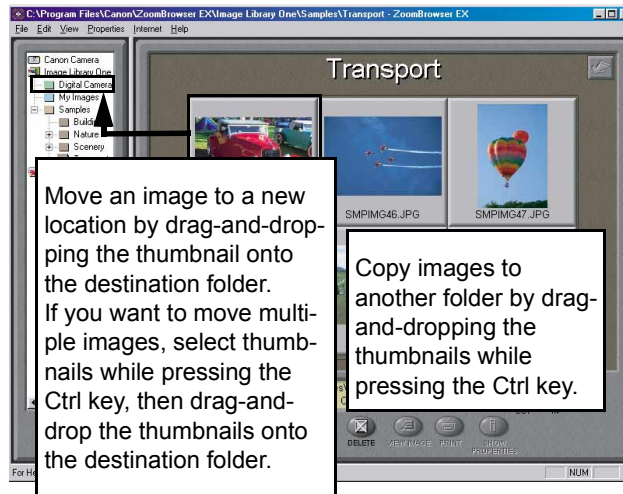
- 4 Click the **OK** button.

The new folder will be created under the selected Image Folder or subfolder.



Changing Location of Image Files

You can move image files to a new location, by drag-and-dropping the thumbnails from the Browser Display Area onto any folder displayed in the Tree View.

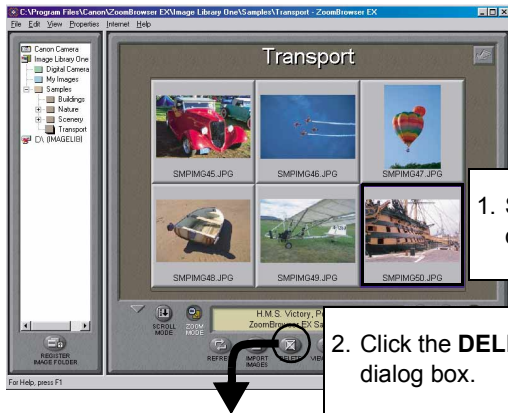


You can also move a whole folder by drag-and-dropping the folder icon to a new location in the Tree View.

To copy an image or folder to a new location, drag-and-drop it while pressing the Ctrl key.

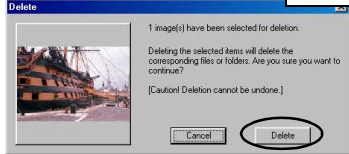
Deleting Images

When an image(s) is displayed and selected in the Browser Display Area, you can delete the image file(s) by clicking the **DELETE** button.




1. Select an image (thumbnail) you want to delete.

2. Click the **DELETE** button to open the **Delete** dialog box.

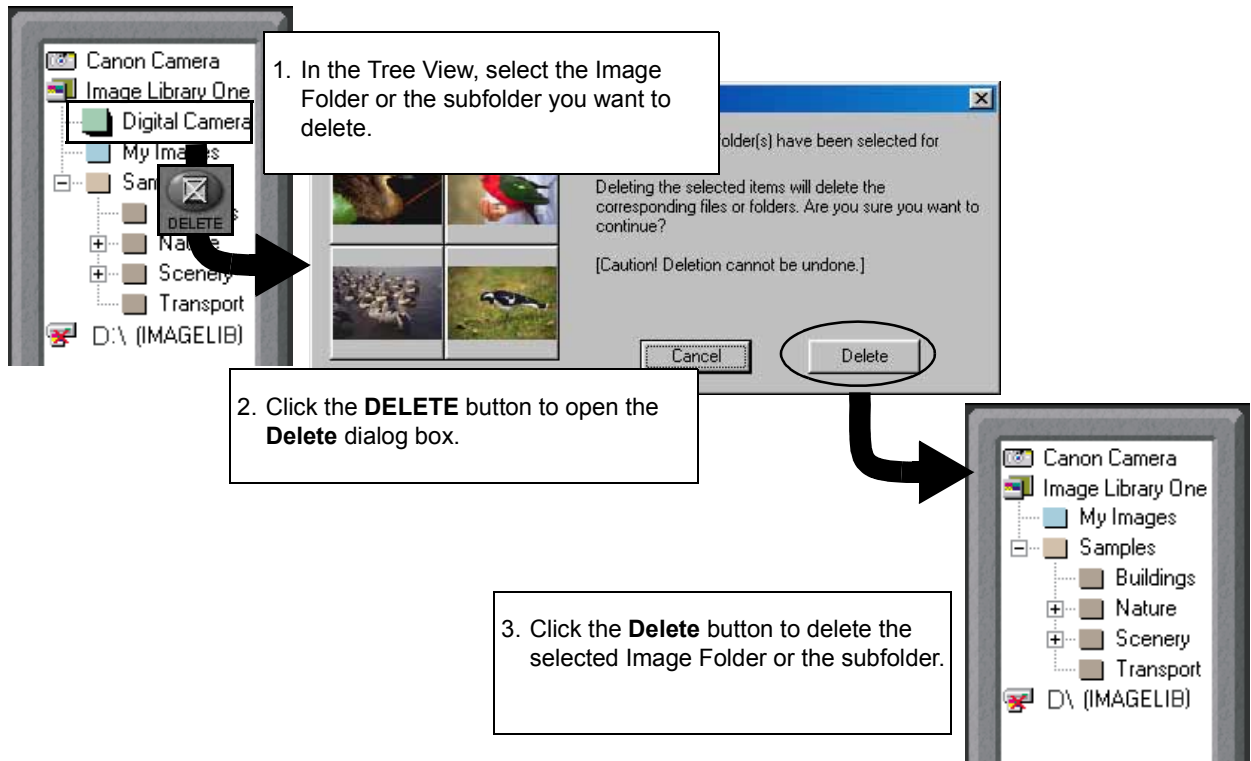


3. Click the **Delete** button.



Note ➤ When the **Delete** button is clicked, the actual image file(s) is completely deleted from your computer's hard disk or the removable volume.

You can also delete a folder from your computer, by selecting the folder icon in the Tree View and then clicking the **DELETE** button.



Note ➤ When the **Delete** button is clicked, the folder is completely deleted from your computer's hard disk or the removable volume, not only the Image Folder (that is, the actual folder registered as an Image Folder) but also all its subfolders.

Managing Image Folders Using Shortcut Menu

Select a folder or an Image Folder in the Tree View, and right-click with the mouse. This displays a pop-up menu which offers you the option commands as listed in the table below.

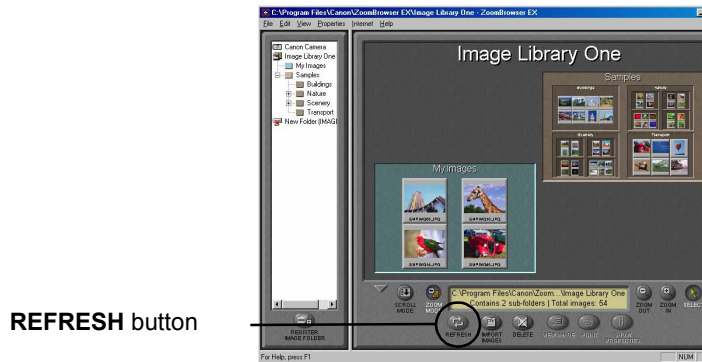
Command	Brief explanation of its function
New Folder	Creates a new folder under the Image Folder or subfolder selected in the Tree View. Refer to Creating New Folders for more details.
Rename Folder	Allows you to rename the selected Image Folder or subfolder. Note that this command is not for renaming a removable volume registered as an Image Folder.
Deregister Image Folder	Deregisters the selected Image Folder. This command does not delete any actual image files or subfolders contained in the deregistered Image Folder. It only deletes information on the folder registered to the ZoomBrowser EX.
Set Logical Volume Name	Becomes selectable only when you have selected a removable volume which is registered as an Image Folder. Allows you to rename the selected volume.
Set Folder Color	You can change the color of both the folder icon and the background in the Browser Display Area.
Remove Folder Color	Becomes selectable only when you have selected a folder whose folder color has been changed. Clears the current color settings and restores the default color.
Refresh Folder	Refresh the contents information (database) of the selected Image Folder or subfolder. This command is also executed using the REFRESH button. Refer to Refreshing View in the Browser Display Area for more details.

Delete	<p>Deletes the selected Image Folder or subfolder. Care must be taken for this command execution. Once the Delete command is executed, the actual image files and subfolders are completely erased from your computer's hard disk.</p> <p>This command is also executed using the DELETE button. Refer to Deleting Images for more details.</p>
Copy	Copies the selected Image Folder or subfolder including its all image files and subfolders.
Paste	Pastes the copied Image Folder or subfolder under the selected folder in the Tree View.
Properties	Becomes selectable only when an Image Folder is selected. Allows you to view the properties of the folder or the removable volume registered as an Image Folder.

Refreshing View in the Browser Display Area

If you perform file management using other file management software such as Windows Explorer, the ZoomBrowser EX may not always reflect the updates done with other file management software immediately.

To reflect the updates on the database, select the Image Folder or subfolder which you want to update in the Tree View, and then click the **REFRESH** button.



REFRESH button

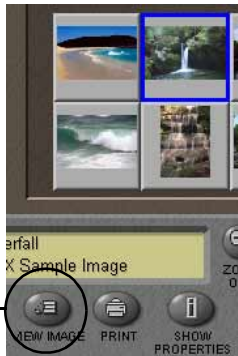
Another way to refresh the ZoomBrowser EX database is to use the commands provided in the **View** menu.

Command	Information to be updated
Refresh Current Folder	Contents of the folder currently displayed in the Browser Display Area.
Refresh Online Registered Folders	Data on the whole database of ZoomBrowser EX.

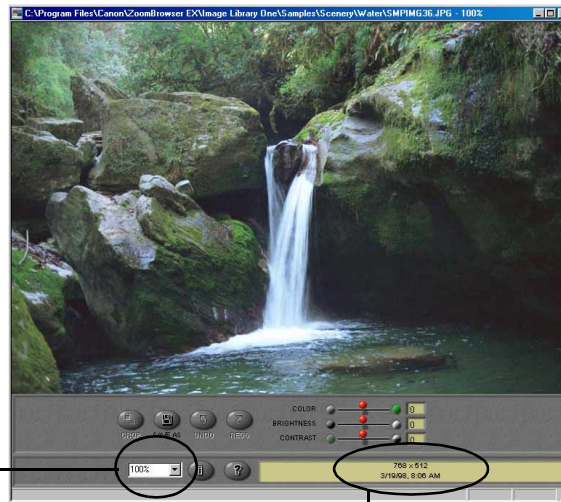
Processing Image Using Image Viewer

You can view the actual image of the selected thumbnail by opening the Image Viewer. First select the desired image and then click the **VIEW IMAGE** button.

Double-clicking the selected thumbnail in the Browser Display Area also opens the **Image Viewer** window. In this window, you can **crop** and/or **adjust** colors of the image, and **save** the result as a new file.



VIEW IMAGE button
Click this to open the
Image Viewer

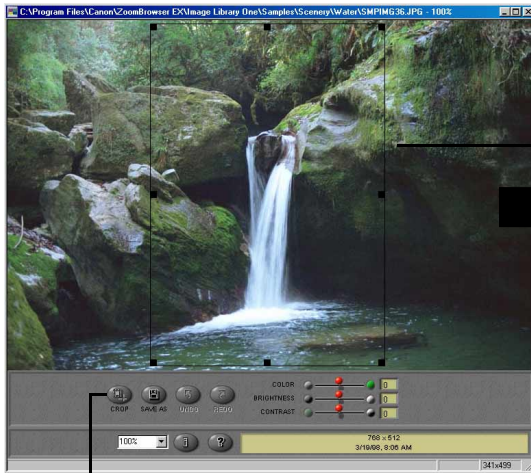


The zoom ratio is displayed here.
Specify the desired ratio.

Image size, date and
time it was taken are
displayed here.

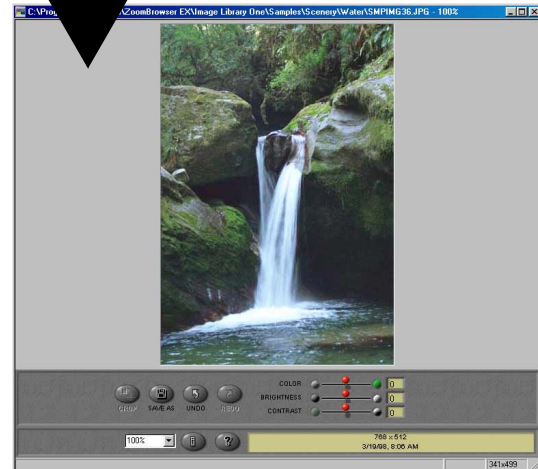
Cropping Image

Select the portion of the image you want to keep by mouse-dragging over it, and then click the **CROP** button. Areas outside the selection will be trimmed away.



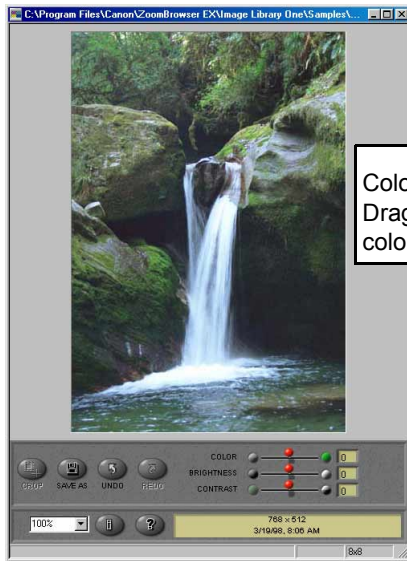
CROP button
Click this to crop along the
trimming line.

Cropped area



Adjusting Image Colors

The color adjustment slider controls allow you to adjust color, brightness and contrast by dragging them to and fro.



Color adjustment slider controls
Drag them to and fro, to change
color, brightness and contrast.



See how color, brightness and
contrast have been adjusted.

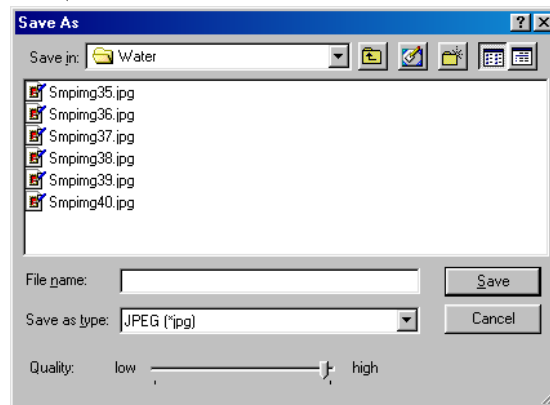
Saving Image after Processing

The processed image can be saved as a new file.



SAVE AS button
Click this to open the **Save As** dialog box.

Type in the file name and specify the file type, then click the **Save** button. The image is saved as a new file.



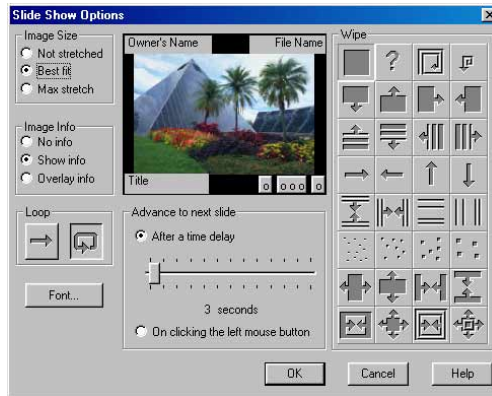
Slide Show

This function enables you to display the images selected in the Browser Display Area as an automated slide show. You can view them in sequence using the entire computer screen.

Steps

- 1 Select the **Slide Show Options** from the **View** menu.

The **Slide Show Options** dialog box opens to allow you to specify a set of parameters.





- 2 Specify how you want to have the images displayed.

You can choose the playing mode and apply enhancing effects to the slide show. When the **After a time delay** option is selected, move the slide control to specify the interval after which the show should move on to the next picture.

- 3 Specify how you want to play slide show sequentially using the **Loop** options.



Clicking the  sets the sequential image display through to the last image. The slide show ends and closes after the last image shown.

Clicking the  sets the endless sequential image display.

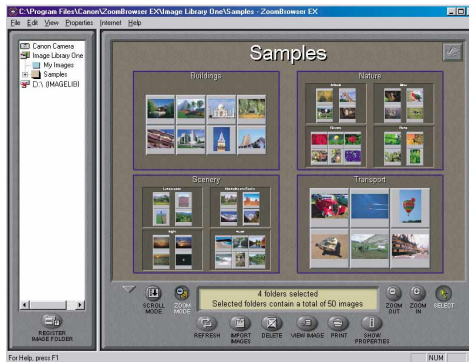
To exit from this endless loop, you will have to press the Esc key or **Close Slide Show** button to end and close the slide show.

For details on how to set the parameters, click the **Help** button in the **Slide Show Options** dialog box.

- 4 Click the **OK** button.

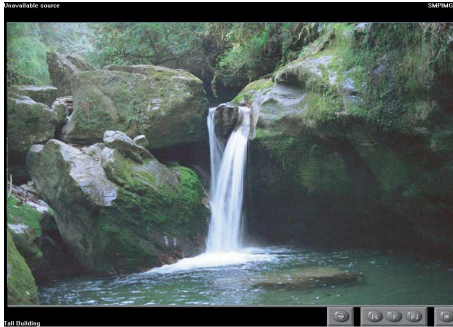
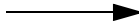
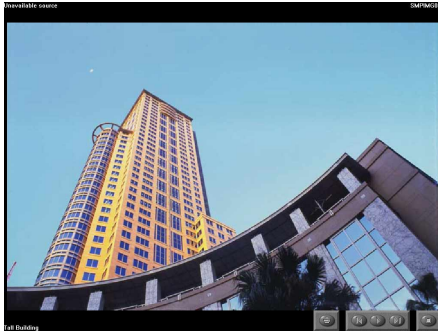
The **Slide Show Options** dialog box closes and opens the Browser Display Area again.

- 5 Select the images or folders you want to display in the slide show in the Browser Display Area.



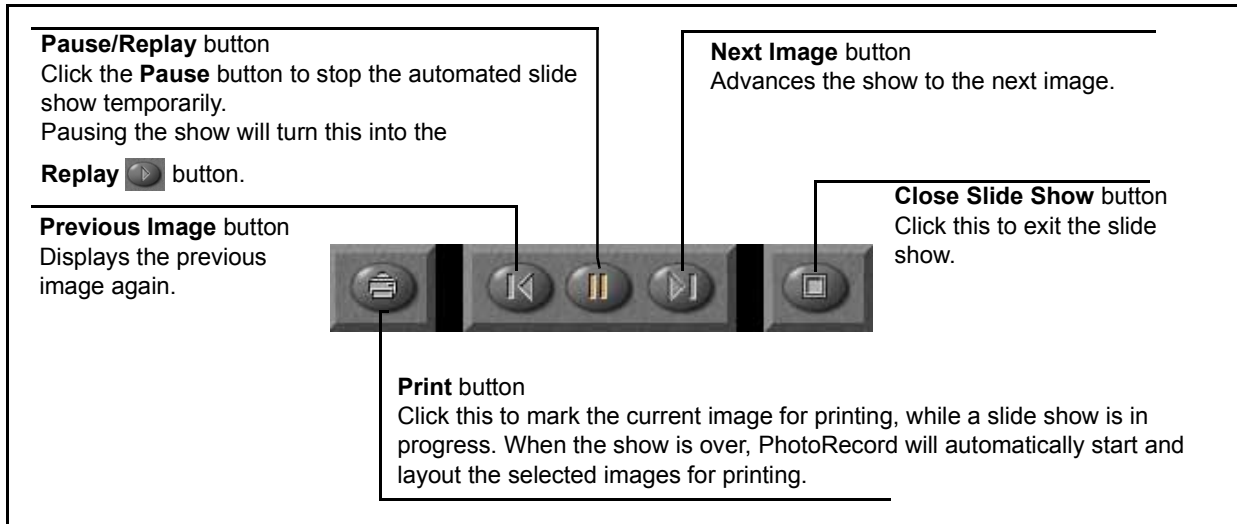
6 Select the **Slide Show** from the **View** menu.

The slide show starts and selected images are displayed in sequence on the entire computer screen according to the parameters set in the **Slide Show Options** dialog box.



Slide Show Control Buttons

While the slide show is in progress, the control buttons are displayed on the bottom-right corner of the screen.



When the **No Info** radio button is selected in the **Slide Show Options** dialog box, no control buttons are shown on the screen. If this is the case, right-click to open a pop-up menu as shown below.

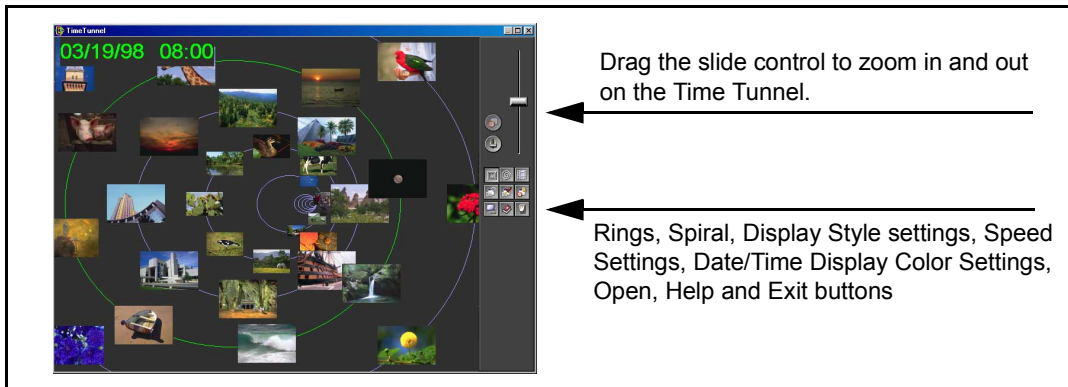
Select the corresponding option from this menu.



Time Tunnel

You can open the **Time Tunnel** window by selecting the **Time Tunnel...** from the **View** menu.

When the **Time Tunnel** window opens, you see a series of rings which remind you of a time tunnel. The images in the Browser Display Area, or those contained in the selected folder, will be displayed in the Time Tunnel, positioned along the lines of the rings automatically. The thumbnails are arrayed in a sequential order by the date they were shot (file dates). Zoom in or out freely on the rings to change the arrangement, by moving the slide control or by specifying the date. Choose the display mode from among **Rings**, **Spiral** and **Film** by simply clicking the switch buttons. You can open the actual image of the desired thumbnail by double-clicking on it.



The Time Tunnel offers a variety of option features, including changing the display mode and searching through images by file date.

For details on how to set the parameters, click the Help button in the **Time Tunnel** window.

Note ➤ The Time Tunnel can handle up to 500 images.

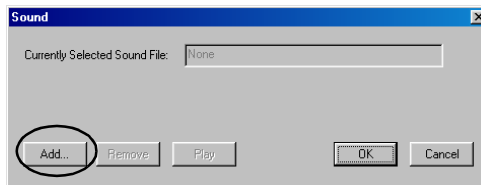
Adding Sound to Image

You can associate sound with an image by using the sound feature of ZoomBrowser EX.

Steps for Recording

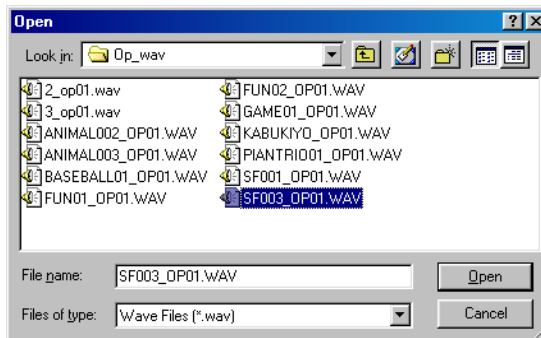
- 1 Select the image to which you want to add sound in the Browser Display Area. Open the **Properties** menu and select the **Add/Remove Sound**.

The **Sound** dialog box appears.



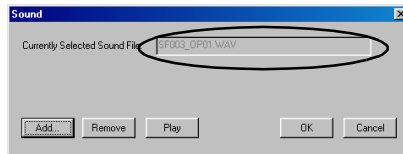
- 2 Click the **Add** button.

The **Open** dialog box appears.



- 3 Specify the sound file.
Selectable sound files are those in the WAV and the MIDI formats.

- 4 Click the **Open** button.
The name of the selected file appears in the **Sound** dialog box.



Click the **Remove** button here if you want to remove the sound file.
Click the **Play** button here if you want to play the sound file.

- 5 Click the **OK** button.

ZoomBrowser EX takes in the sound data.

When the sound is added, the image thumbnail is marked with a sound symbol on the top-right corner.

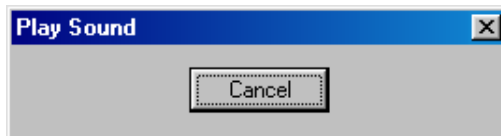


Steps for Playing

- 1 Select an image thumbnail which has a Sound symbol on the top-right corner.



- 2 Open the **Properties** menu, and select the **Play Sound** command.
The **Play Sound** message box appears and starts playing the sound file.



When it has finished playing, the message box closes. Click the **Cancel** button to stop playing.

Processing Image for Sending by E-mail

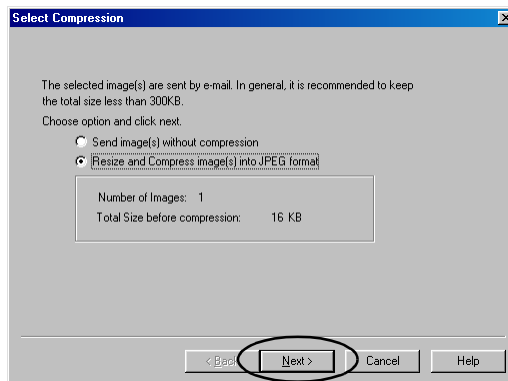
It is simple and easy for you to process images and attach them to an E-mail, if you use ZoomBrowser EX. Select the images in the Browser Display Area and follow the instructions of the wizard.

- 1 Select the image or images that you want to send in the Browser Display Area, and then select the **Send Image(s) by E-mail** from the **Internet** menu.

The wizard starts and the **Select Compression** dialog box opens.

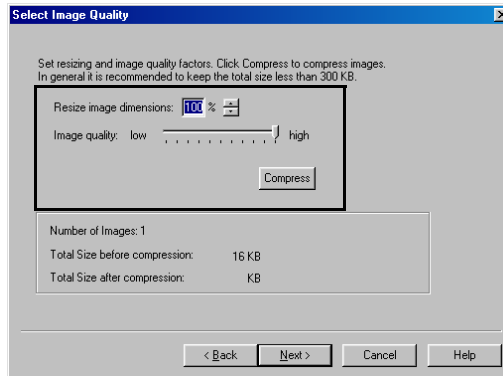
If you select the **Send image(s) without compression** option here, the file will be attached in its original size.

- 2 Click the **Next** button.

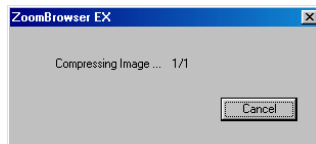


The wizard goes on to the next step.

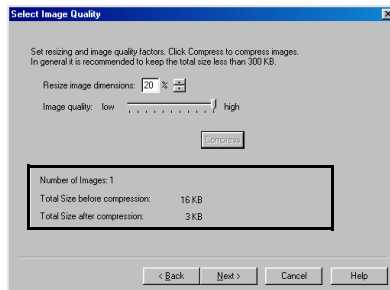
- 3 Specify the resizing ratio and the image quality, and then click the **Compress** button.



The program starts compressing the image files.



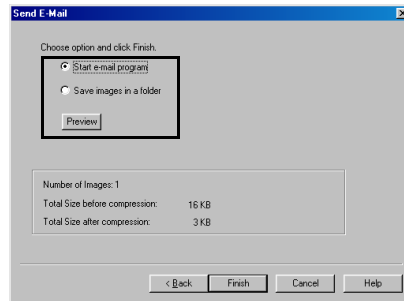
The total file size after compression will be calculated and displayed in the bottom area of the dialog box.



4 Click the **Next** button.

The wizard goes on to the next step.

To check how the resized images look on the screen, click the **Preview** button.



5 Choose what you want to do with the compressed image files, and then click the **Finish** button.

This closes the wizard and automatically creates an image file for sending with an E-mail.

If the **Start e-mail program** option is selected as the next step in 5. above, your E-mail application will automatically start when the compression is completed, allowing you to edit an E-mail message. The images processed by ZoomBrowser EX will be automatically attached to the E-mail.

If the **Save images in a folder** option is selected as the next step in 5. above, the **Select Directory** dialog box will be displayed. Specify the destination folder to save the image files and save them as new files.

For details of the operation, click the Help button in the **E-mail wizard** dialog box.

Editing Image Using Other Image Processing Programs

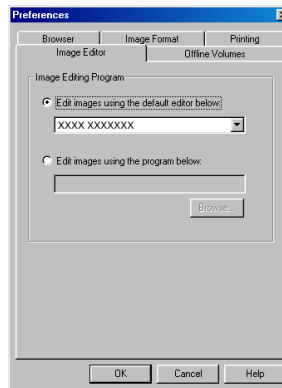
ZoomBrowser EX allows you to do more image processing through cooperation with other image processing programs.

Opening Image Files using Other Image Processing Programs

You can specify your favorite image processing program for editing image files while using ZoomBrowser EX. When necessary, the image editing program opens automatically and imports the images that are selected in the Browser Display Area.

Specifying the Image Editing Program

Open the **File** menu, and select **Preferences** to open the **Preferences** dialog box. Select the **Image Editor** tab.



When you select the **Edit images using the default editor below:** option, open the drop-down list and select the desired image editing program to be used as default.

When you select the **Edit images using the program below:** option, click the **Browse** button to display the **Open** dialog box, and specify the desired image editing program.

Click the **OK** button after selecting the desired image editing program.

Importing Images



This chapter describes the functionality of ZoomBrowser EX to import/download images from your digital camera.

- Importing Images with the Automation Wizard
- Setting the Automation Wizard to Download Images
- Importing Images Using the Camera Window
- Importing Images from a TWAIN Device
- Importing Images by Drag-and-Drop Operation

Importing Images with the Automation Wizard

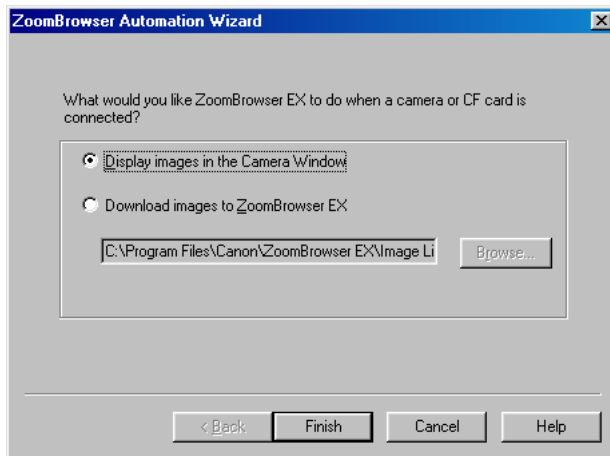
The Automation Wizard enables you to save a sequence of actions from importing images into your computer through printing, so that ZoomBrowser EX will automatically repeat the same action sequence by a simple operation next time.

The Automaiton Wizard starts when you connect a Canon digital camera to your computer or insert a memory card (Compact Flush card) into the memory card slot of a BJ printer connected to your computer after starting ZoomBrowser EX.

The Automation Wizard also starts when you connect a non-Canon digital camera or a memory card reader to your computer after starting ZoomBrowser EX.

Selecting Automatic Image Downloading

When the Automation Wizard starts for the first time, the **ZoomBrowser Automation Wizard** dialog box appears as shown below:



Note ➤ If it is not the first time that the Automation Wizard starts, the **ZoomBrowser Automation** dialog box appears, ready to start automatic image downloading directly. Refer to [When the ZoomBrowser Automation dialog box appears](#) for details.

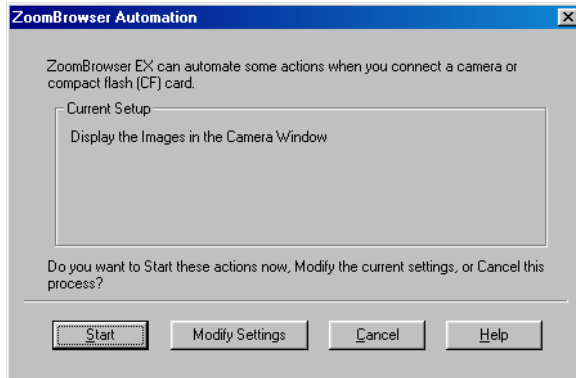
Select the automated action which you want ZoomBrowser to perform first when it detects a connected device such as a digital camera or memory card.

The option items and their actions are as follows:

Option	Action	Further operation
Display images in the Camera Window	When you click the Finish button to quit the Automation Wizard, the Camera Window appears to display all the images stored in the digital camera (or memory card).	See Importing Images Using the Camera Window for the rest of the procedure.
Download images to ZoomBrowser EX	The Automation Wizard proceeds to download images. Click the Browse button to select the folder where to download the images. Automation Wizard copies and saves the image data to the folder specified here.	See Setting the Automation Wizard to Download Images .

■ When the **ZoomBrowser Automation** dialog box appears

When the **ZoomBrowser Automation** dialog box appears instead of the **ZoomBrowser Automation Wizard** dialog box, just click the **Start** button to repeat the same action sequence you have used to import images last time.



If you want to change the action sequence, click the **Modify Settings** button to open the **ZoomBrowser Automation Wizard** dialog box and reselect the desired actions.

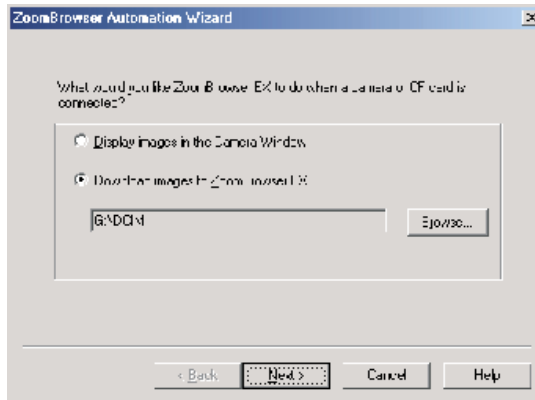
Click the **Cancel** button to quit the Automation Wizard and return to the Browser Display Area window.

Setting the Automation Wizard to Download Images

You can download images from the connected device by setting options in the **ZoomBrowser Automation Wizard** dialog box. The Automation Wizard saves your settings so that it will automatically trace the same action sequence when downloading images next time.

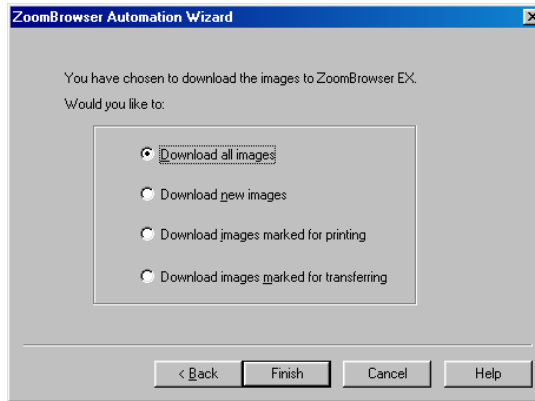
Steps

- 1 Select the **Download images to ZoomBrowser EX** option in the **ZoomBrowser Automation Wizard** dialog box.



- 2 Click the **Browse** button to display a dialog box where you can specify a destination folder to copy the downloaded image data.

- 3 Specify the folder and click the **Next** button.
The Automation Wizard proceeds to the next screen.



4 Select a category of images to download.

The image category options are listed below:

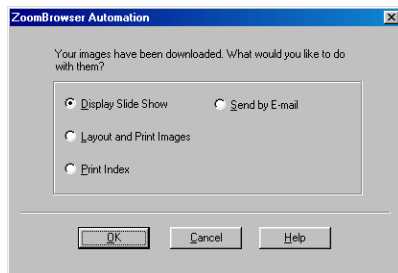
Option	Action
Download all images	Downloads all the images stored in the connected digital camera or memory card.
Download new images	Downloads all the images except those already imported to the ZoomBrowser EX.
Download images marked for printing	Downloads the images marked for printing.
Download images marked for transfer	Downloads the images marked for transfer.

Note ➤ For details on the images marked for printing or transfer, refer to the documentation that comes with your digital camera.

5 Click the **Finish** button.

ZoomBrowser EX starts downloading the images to the computer.

When image downloading is complete, the following message appears:



- 6 Select a radio button to specify the next action to do on the downloaded image data.

The options are described below:

Option	Action
Display Slide Show	Displays all the downloaded images in a slide show .
Layout and Print Images	Selects all the downloaded images and perform custom layout printing .
Print Index	Selects all the imported images and perform index printing .
Send by E-mail	Processes all the downloaded images so that you can attach them to E-mails and save them in the specified image folder for E-mail .

- 7 Click the **OK** button.

The Automation Wizard closes and the selected action starts automatically.

If you click the **Cancel** button, the Automation Wizard closes and ZoomBrowser EX returns to the Browser Display Area window without performing any action.

When the Automation Wizard closes, it saves the selected settings so that it can trace the same action sequence in the next session.

Importing Images Using the Camera Window

Using the Camera Window, you can browse through all the images stored in the device connected to your computer, so that you can select, import, and save desired images in your computer.

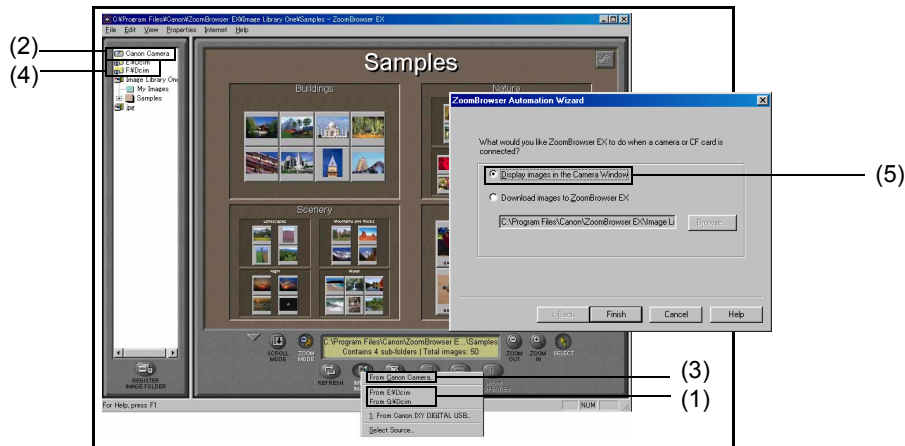
Steps

1 Open the Camera Window.

You can open the Camera Window by any one of the following operations:

	Operation	Data displayed in the Camera Window
(1)	Select From D:\Dcim from the IMPORT IMAGES button submenu.	All the images stored in the Dcim folders in the target drive *The IMPORT IMAGES button submenu and the Tree View show From D:\Dcim , From E:\PWSHOTO , etc. depending on data format of the memory card and the drive name of the connected device. *It is required that your computer have the hardware (memory card reader or PC card adapter for memory cards, etc.) set up correctly, before importing the image data stored in a memory card.
(2)	Double-click From D:\Dcim in the Tree View.	
(3)	Select From Canon Camera from the IMPORT IMAGES button submenu.	All the images stored in the Canon digital camera connected to your computer *Ensure that the digital camera driver is installed correctly. Note that this function is not supported by some of the Canon digital camera products.
(4)	Click the Canon Camera icon in the Tree View.	

(5)	Select the Display Images in the Camera Window option from the Zoom-Browser Automation Wizard dialog box.	All the images stored in the digital camera, memory card, or any other device specified by the Automation Wizard
-----	---	--



↓ The Camera Window displays the thumbnails of images stored in the selected device.



Note ➤ For more information on the Camera Window, refer to [Basic Operation in the Camera Window](#).

- 2 From the Tree View, select the target folder where you want to save the image files.

Note

- 3 To know how to manage folders and libraries, refer to [Image Database](#).
- 3 Return to the Camera Window. Click to select photos or images you want to import to your computer.

When you select a thumbnail, the area around the selected thumbnail changes its color.

The Camera Window displays the thumbnails of images contained in the selected device.

DOWNLOAD button



4 Click the **DOWNLOAD** button in the Camera Window.

The selected images are saved as files in the computer. The downloaded images are displayed in the Browser Display Area.



5 Click the Close button at the upper-right corner of the Camera Window if you want to close the Camera Window now and disconnect the device.

If you want to continue downloading more photos or images, repeat Steps 3 and 4.

Basic Operation in the Camera Window

The Camera Window shows thumbnails of the photos or images contained in the device connected to your computer, so you can browse through all the images in the device.

This subsection describes how to use the control buttons in the Camera Window.

Elements in the Camera Window

The Camera Window shows thumbnails of all the images stored in the device connected to your computer. Each thumbnail is associated with the image file information.

The Camera Window also provides options that enable you to import and print the images.

To select an image, click its thumbnail. Blue borders mark the selected image. To select two or more files, click the images one by one while pressing the Ctrl key.

Thumbnails

Photos or images stored in the connected device are displayed as thumbnails here. When an image is selected, its background turns blue.



(1) **SETUP OPTIONS**

(2) **CONNECT CAMERA**

(3) **SELECT**

(4) **DELETE**

(5) **DOWNLOAD**

(6) **PRINT**

(11) **HELP**

(10) **SLIDE/DPOF**

(9) **IMAGE INFO**

(8) **UPLOAD**

(7) **ROTATE**

Device image

When ZoomBrowser EX detects a connected device, the Camera Window shows an image to indicate the device type.



Memory card or non-Canon digital camera



Canon digital camera

Note ➤ If photos were shot in the Stitch Assist mode of Canon digital camera, they are displayed with special marks and icons. Click the mark to start the PhotoStitch utility and [merge photos to create a panoramic image](#).

(1) SETUP OPTIONS

Click the **SETUP OPTIONS** button to display a setting menu containing the following options.

Menu option	Function
Camera Settings	Displays a dialog box that allows you to confirm or change date, owner information, and other settings for the connected camera.
Communication Settings	Displays a dialog box that allows you to change the settings for the communication port to which the camera is connected.
My Camera	Displays a dialog box that allows you to change the My Camera settings (only when a camera that supports the My Camera function is connected).

Note ➤ These setup options are available only when the connected digital camera is a Canon product. The dialog box offers somewhat different parameters depending on the product type.

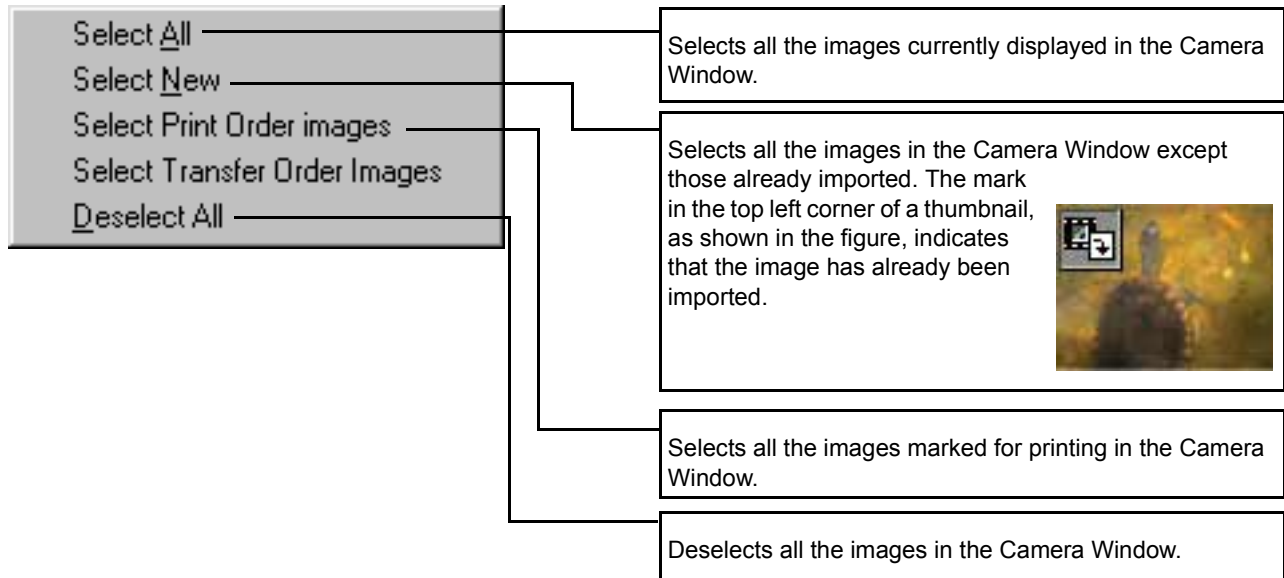
(2) CONNECT CAMERA

Click the **CONNECT CAMERA** button to restart the connection process. All the thumbnails are reloaded from the camera into the computer.

Note ➤ The **CONNECT CAMERA** function is available only when the connected digital camera is a Canon product.

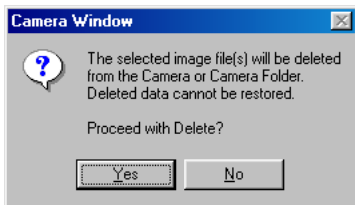
(3) **SELECT**

Click the **SELECT** button to display the selection menu as shown below:



(4) DELETE

Use the **DELETE** button to clear the selected images completely from the device. If you select an image or images and click the **DELETE** button, a message appears as shown below:




Click **Yes** if you want to clear the images completely from the device. If you do not want to clear them, click **No**. The deleted images cannot be restored.

(5) DOWNLOAD

Use the **DOWNLOAD** button to copy images from the connected device to the specified folder in the Tree View of ZoomBrowser EX.

Select the images to download, and then click the **DOWNLOAD** button. Downloading starts and a monitor window appears, so that you can check the progress of downloading.

When copying is finished, the monitor window closes. If you want to cancel downloading while in progress, click the **Cancel** button in the monitor window.

The  icon that appears at one corner of a thumbnail indicates that the corresponding image has already been imported to your computer.

(6) PRINT

Use the **PRINT** button to print images by activating the PhotoRecord utility. First select the images to print, and then click the **PRINT** button and select either **Easy-PhotoPrint**, **Layout** or **Index** from the **PRINT** button pop-up submenu.

Selecting **Easy-PhotoPrint** starts Easy-PhotoPrint. By following a simple operation procedure, you can make a borderless (full page) print easily.

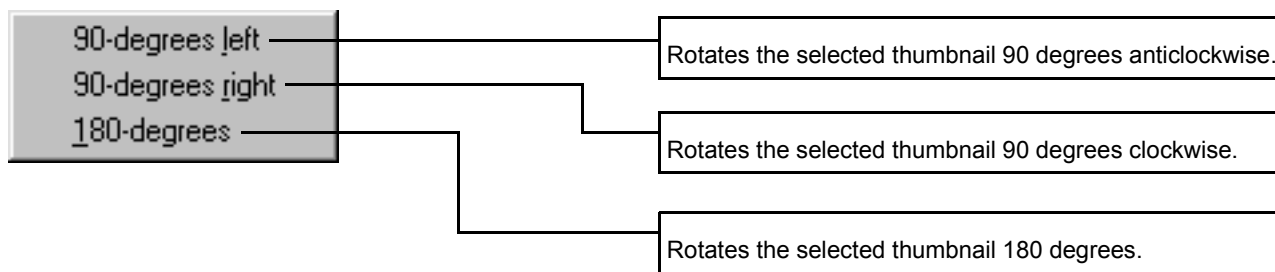
Select **Layout** to activate PhotoRecord. The selected photos are loaded automatically.

Select **Index** to display the **Index Print Settings** dialog box.

Note ► For details on the printing procedure, refer to [Printing from PhotoRecord](#).

(7) ROTATE

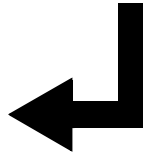
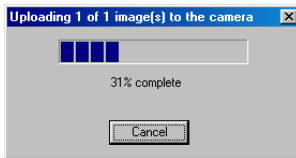
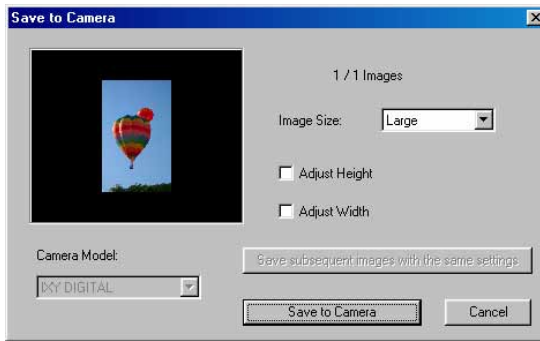
Use the **ROTATE** button to rotate a thumbnail. A thumbnail is a reduced image of the actual file. First select the thumbnail to rotate, and then click the **ROTATE** button. A menu opens as shown below:



Rotating a thumbnail does not affect the actual image data, although the image is automatically rotated when it is copied to your computer.

(8) UPLOAD

Use the **UPLOAD** button to copy images from your computer to the connected device. Click the **UPLOAD** button to open a dialog box and select the images to copy to the device. When an image or images are selected, the **Save to Camera** dialog box appears as shown below:



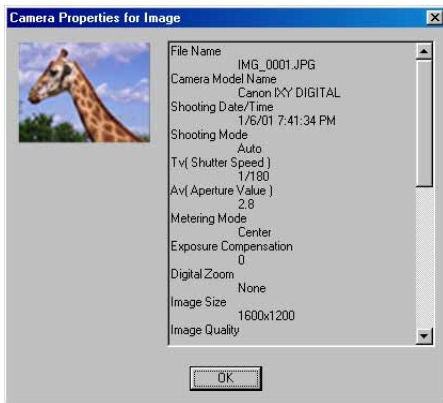
Specify the image size, select the resize option, and click the **Save to Camera** button. This starts copying the selected images to the connected device.

Another way of copying images to the connected device is to mouse-drag the images in the Browser Display Area and drop them onto the thumbnail area.

(9) IMAGE INFO

Use the **IMAGE INFO** button to view the date of shot, the EV compensation, and other information concerning a photo.

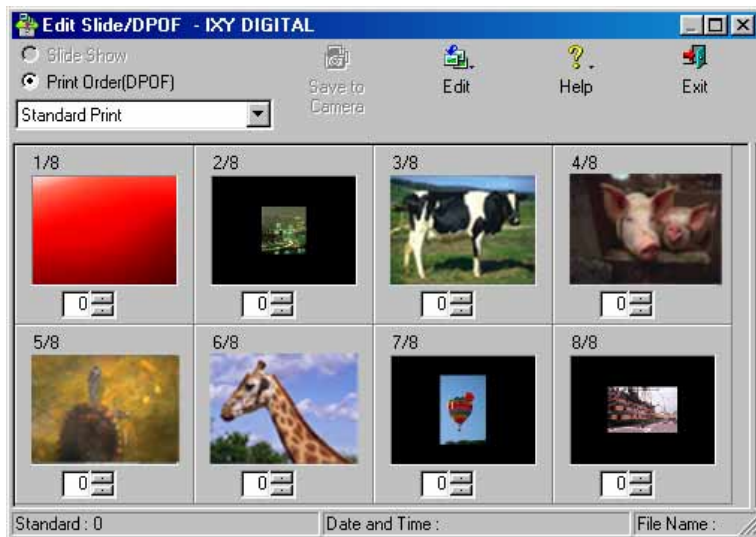
First select a photo image, and click the **IMAGE INFO** button. The **Camera Properties for Image** window opens as shown below:



Note ➤ You can use this function only when the connected digital camera is a Canon product.

(10) SLIDE/DPOF button

Click the **SLIDE/DPOF** button to display the **Edit Slide/DPOF** window.



You can use this dialog box to edit the camera's slide shows or its DPOF print settings, and write them onto the camera's memory.

Note ➤ You can use this function only when the connected digital camera is a Canon product.

(11) HELP

Click the **HELP** button to display the **About Camera Window** or the Help for the Camera Window.



About Camera Window that shows product information of the Camera Window



Importing Images from a TWAIN Device

TWAIN is a standardized protocol for transferring image data between a digital camera, scanner or other digital image device and a computer.

This section describes how to import images from a TWAIN-compliant device to your computer.

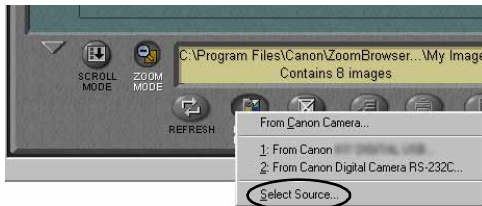
Steps

- Note** ►
- Ensure that the digital camera or scanner is connected properly.
 - Ensure that the TWAIN driver is already installed in your computer.

1 Start ZoomBrowser EX.

Refer to [Starting ZoomBrowser EX](#) for the procedure to start ZoomBrowser EX.

2 Click the **IMPORT IMAGES** button to open a pop-up submenu. Select **Select Source** from the menu.



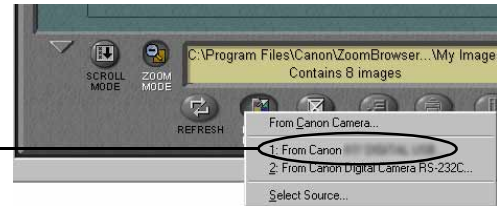
The **Select Source** dialog box appears.

3 Open the list box under **Select a data source**, select the connected TWAIN device, and then click the **OK** button.

The ZoomBrowser EX main window opens.

- 4 From the Tree View, select the folder where you want to save the imported image files. Ensure that the contents of the selected folder are displayed in the Browser Display Area.
- 5 Click the **IMPORT IMAGES** button, and then select the connected TWAIN device from the **IMPORT IMAGES** pop-up submenu.

The TWAIN device selected in Step 4 is added as an image source option to the **IMPORT IMAGES** pop-up submenu.



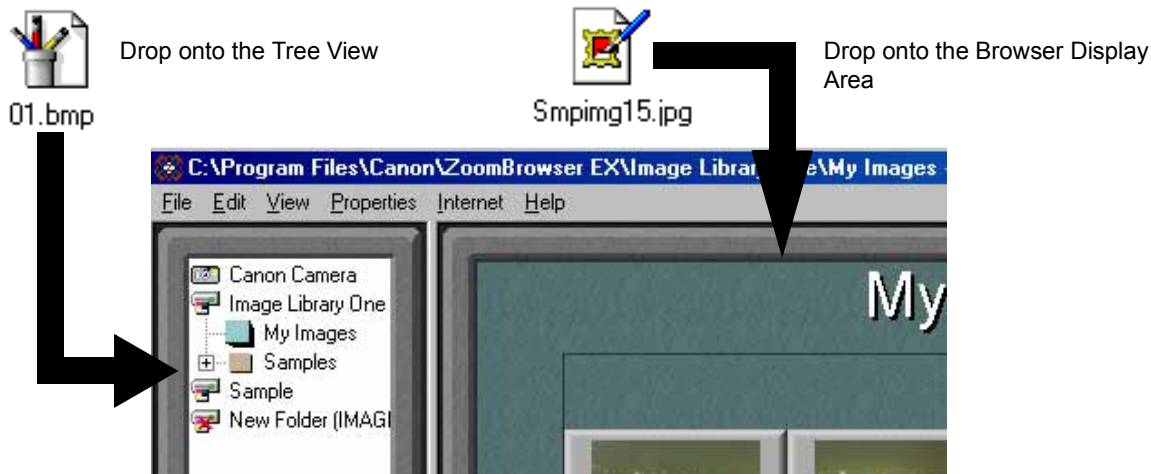
The TWAIN driver window for the selected TWAIN device opens.

- 6 Follow the instructions in the TWAIN driver window to import images from the device.
- 7 Close the TWAIN driver window to return to the ZoomBrowser EX. The imported images are saved in the folder currently displayed in the Browser Display Area.

Note ➤ If you use the procedure herein to import images from a Canon digital camera that supports ZoomBrowser EX, image file information such as the date of shooting and situation of shot is not saved in the ZoomBrowser EX's database. Use the procedure in [Importing Images Using the Camera Window](#) if you want to import images with such information.

Importing Images by Drag-and-Drop Operation

You can import images from a variety of storage media by simply drag-and-dropping the file icons onto the Browser Display Area. The files are registered in the library or folder currently displayed in the ZoomBrowser EX window. Use this easy method of registering image files from your hard disks, CDs, and MOs, without invoking the **Register Image Folder** function.



You can also drag-and-drop the icons onto the target library/folder displayed in the Tree View. Then the files will be registered in the ZoomBrowser EX database.

Note that when the files are stored in your hard disk (drive C), the drag-and-drop operation moves the actual files into the database. If you want to register them by copying, not moving the actual data, drag-and-drop the icons while pressing the Ctrl key.

Note ➤ To know what file types are supported by the database, refer to [Starting ZoomBrowser EX](#).

■ Importing Images by Using the Windows Explorer

The libraries and folders registered in ZoomBrowser EX exist in your computer disks as actual folders. It means that you can register new images by using the Windows Explorer. Register new image files and folders in ZoomBrowser EX by copying them to the folders that are already registered.

Note ➤ For more information on libraries and registered folders of ZoomBrowser EX, refer to the [Image Database](#).

- 1 Activate the Windows Explorer. Select the desired item and copy/move it to a medium or a folder that is already registered as a library or folder of ZoomBrowser EX.
You can also copy/move two or more files and folders in a single step.
- 2 From the Tree View of ZoomBrowser EX, select the library or folder which contains the newly added image data.
- 3 Right-click with the mouse to open the pop-up menu, and select **Refresh Folder**. This refreshes the content information (database) of the selected library or folder, by registering the new image data added through the Windows Explorer.

Printing from PhotoRecord



This chapter describes how to print your photos using a variety of photo-printing features of the PhotoRecord utility. When using ZoomBrowser EX, select the photos (or folder) you want to print from either the Browser Display Area or the Camera Window, and then click the **PRINT** button and select **Layout** from the submenu. The PhotoRecord utility will automatically start to provide the following functions:

- Printing a Photo Index (Index Printing)
- Custom Layout Printing (Artwork/Layout Album)
- Printing in a Specified Photo Size (Fixed Photo Size Printing)
- Printing in the Borderless Printing Mode (Tiled Photo)
- Printing on Canon Perforated Paper
- About Canon Perforated Paper
- Starting Printing

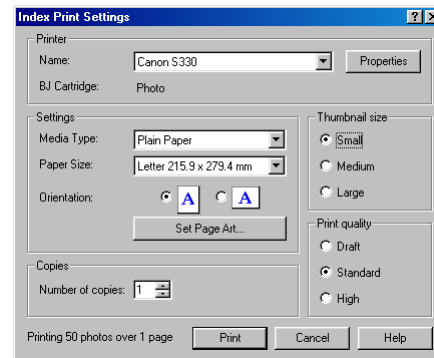
Printing a Photo Index (Index Printing)

One way to print a photo index is to activate PhotoRecord, select the Layout mode to set the photo size, background, and other properties, and then output the print data. The other and easier way is to use the **PRINT** button in the ZoomBrowser EX window. One click on the button starts printing directly from ZoomBrowser EX.



ZoomBrowser EX prints all the selected photos in an automated layout.

If you also want to print the file names and/or dates of the photos, open the **Preferences** dialog box and specify the captions.



An Easy Way to Print an Index

You can print a photo index directly from ZoomBrowser EX, just by clicking the **PRINT** button.

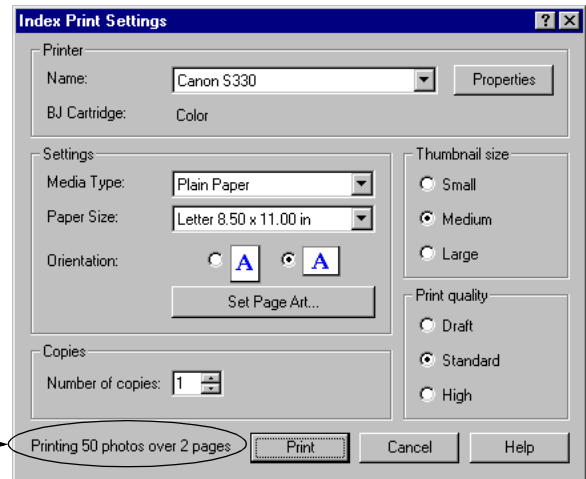
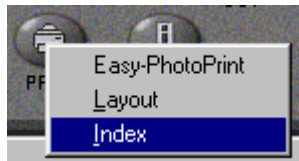
Steps

- 1 Select the photos or folders of which you want to make an index from the Browser Display Area of ZoomBrowser EX, and then click the **PRINT** button to open the pop-up submenu.

Note ➤ If you want to select two or more photos, click the photo images while pressing the Ctrl key.



- 2 Select **Index** from the **PRINT** button pop-up submenu.
The **Index Print Settings** dialog box appears.

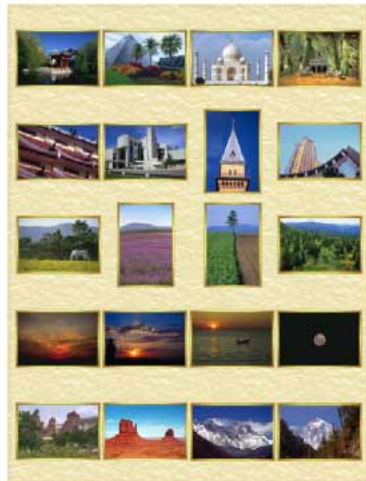


The number of pages varies depending on the number of photos, paper settings, and the thumbnail size.

3 Specify the **Thumbnail size**, **Media Type**, **Paper Size**, **Orientation**, and **Print quality** options.

You can select a thumbnail size from **Small**, **Medium**, and **Large**.

If you want to add a background image, click the **Set Page Art** button to open the **Change Page Artwork** dialog box. Specify an image to go with your pages.



(Large)



(Medium)



(Small)

4 Click the **OK** button.

The printer starts printing.

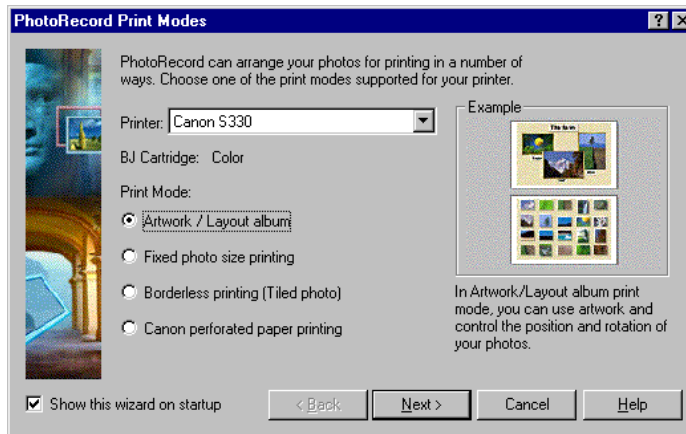
Previewing the Layout before Printing an Index

You can preview the page layout on the screen before printing a photo Index.

Steps

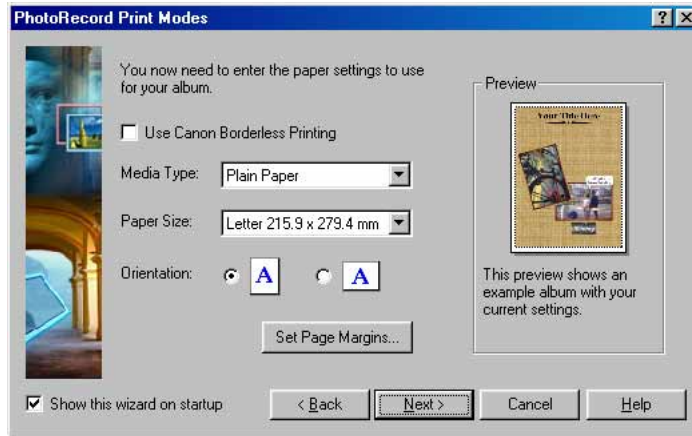
- 1 Select the photos of which you want to make an index from the Browser Display Area of ZoomBrowser EX. Click the **PRINT** button and select **Layout** from the **PRINT** button pop-up submenu.

PhotoRecord starts and the **PhotoRecord Print Modes** dialog box opens, ready to start the Print Modes wizard.



- 2 Select the desired printer. Select **Artwork/Layout album** from the **Print Mode** options.

- 3 Click the **Next** button to proceed to the next step.



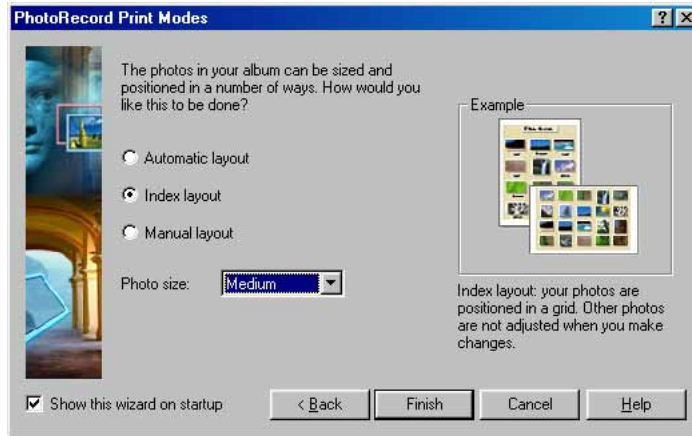
- 4 Specify **Media Type**, **Paper Size**, and **Orientation**.

The **Preview** area shows the print image in relation to the current settings.

Clicking the **Set Page Margins** button allows you to widen or narrow the area for printing the image data.

- 5 Click the **Next** button to proceed to the next step.

6 Select **Index** layout.



7 Select the thumbnail size from the **Photo size** drop-down list. You can select from **Small**, **Medium**, and **Large**.

8 Click the **Finish** button.

The **PhotoRecord** window opens. It automatically positions the selected photos to fit the current paper settings.



The Album Control Panel in the **PhotoRecord** window contains the controls shown below. These controls enable you to access various artwork options.



Artwork Options

In the **Artwork/Layout album** mode, you can clip or resize your photos, arrange them in a desired layout, add text, and add photo frames and background.

Starting Printing

Click the **PRINT** button to start printing.

Custom Layout Printing (Artwork/Layout Album)

The **Artwork/Layout album** option allows you to arrange your photos in a desired layout and apply a variety of artwork including clipping, resizing, rotation, text insertion, and ornamentation with photo frames and background. See [Artwork](#) for details on the artwork features.

The screenshot shows the PhotoRecord software interface with a custom layout album page. The page has a yellow background and a title 'Nature' in a green font. Below the title, there is a section titled 'Birds' in a red font. Four photos of birds are displayed in ornate frames. The interface includes a menu bar (File, Edit, Album, View, Web, Help) and a toolbar with buttons for PRINT MODES, FETCH PHOTOS, PAGE ART, UNDO / REDO, and PRINT. A 'LAYOUT' section with sliders for AUTO, INDEX, MANUAL, and PHOTO SIZE is also visible.

You can add a page title.
See [Inserting a Page Title](#).

You can clip or trim a photo.
See [Clipping a Photo](#).

You can add photo captions.
See [Adding and Positioning Text](#).

You can add photo frames and background to make an ornamented album.
See [Page Art](#).

You can move, resize, or rotate the photos for graphic effects.
See [Changing Layout](#).

Setting the Print Mode

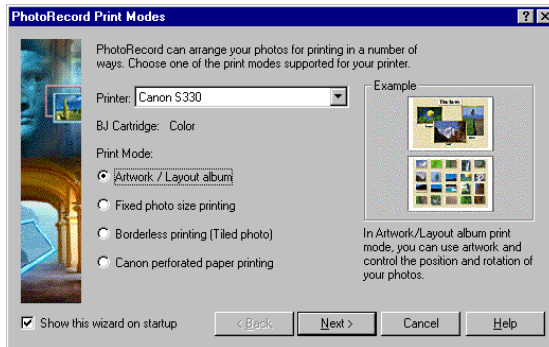
Specify the size and position of each photo and arrange the photos in a desired layout.

Steps

- 1 Select a photo or photos to print from the Browser Display Area, click the **PRINT** button, and select **Layout** from the **PRINT** button pop-up submenu.

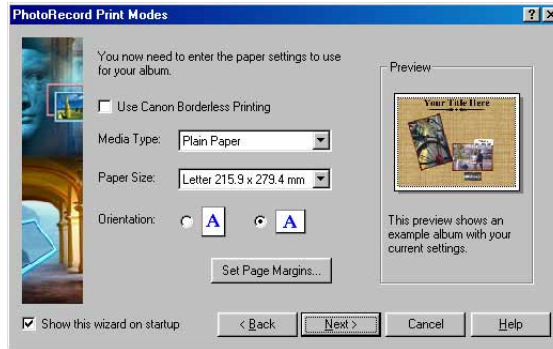
PhotoRecord starts and the **PhotoRecord Print Modes** window opens, ready to start the Print Modes wizard.

The options in this window vary depending on the printer type.



- 2 Select the desired printer from the **Printer** list and select **Artwork/Layout album** from the **Print Mode** options.

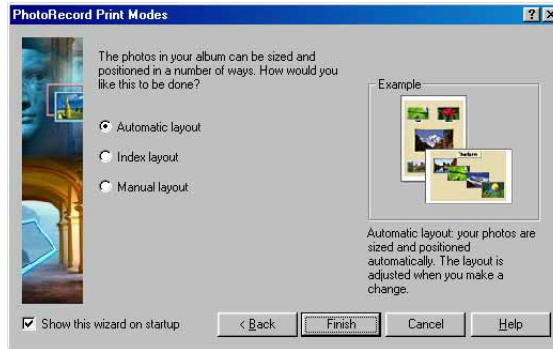
- 3 Click the **Next** button to proceed to the next step.



- 4 Specify **Media Type**, **Paper Size**, and **Orientation**.
The **Preview** area shows the print image in relation to the current settings.
Clicking the **Set Page Margins** button allows you to widen or narrow the area for printing the album page.
You can enable the Borderless Printing function by selecting the **Use Canon Borderless Printing** check box.

Note ➤ The **Use Canon Borderless Printing** check box is available only when you are using a printer that supports the feature of borderless printing.

- 5 Click the **Next** button to proceed to the next step.



- 6 Specify how the photos should be arranged on the album page.
- Select **Automatic layout** to have the photos automatically arranged by PhotoRecord.
- Select **Index layout** to use the Index Printing feature.
- Select **Manual layout** to position the photos temporarily so that you may freely rearrange them.

7 Click the **Finish** button.

The **PhotoRecord** window opens to display the selected photos in the new layout. They are arranged in the most suitable way for your paper settings.



The Album Control Panel in the **PhotoRecord** window contains the controls shown below. These controls enable you to access various [artwork](#) options.



[Artwork Options](#)

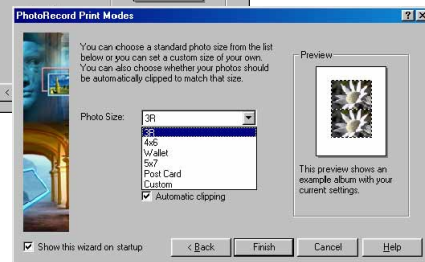
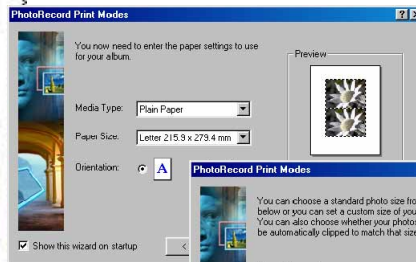
In the **Artwork/Layout album** mode, you can clip or resize your photos, arrange them in a desired layout, add text, and add photo frames and background.

[Starting Printing](#)

Click the **PRINT** button to start printing.

Printing in a Specified Photo Size (Fixed Photo Size Printing)

The **Fixed photo size printing** option allows you to print all the selected photos in a specified photo size.

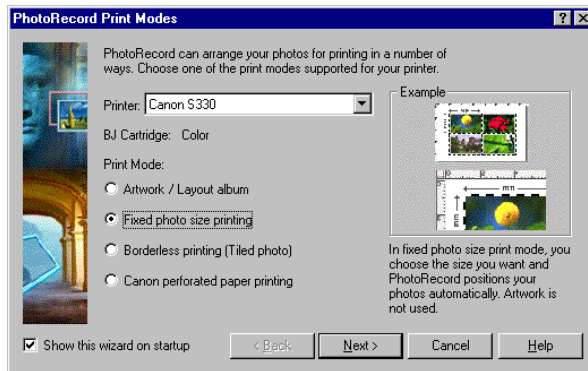


Setting the Print Mode

Specify the photo size you want to print your photos. PhotoRecord automatically arrange the photos to match the setting.

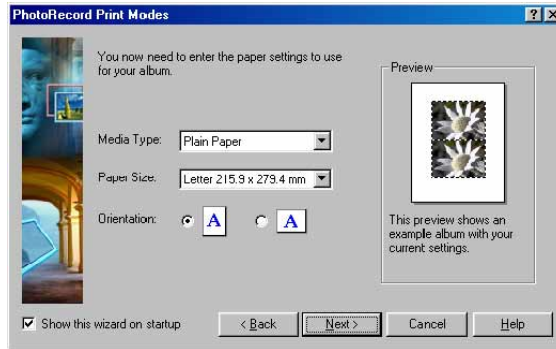
Steps

- 1 Select a photo or photos to print from the Browser Display Area, click the **PRINT** button, and select **Layout** from the **PRINT** button pop-up submenu.
PhotoRecord starts and the **PhotoRecord Print Modes** dialog box opens, ready to start The Print Modes wizard.

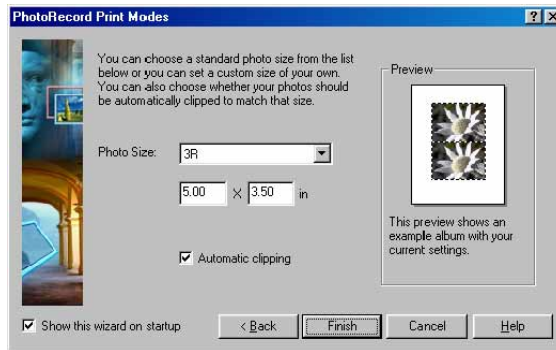


- 2 Select the desired printer. Select **Fixed photo size printing** from the **Print Mode** options.

- 3 Click the **Next** button to proceed to the next step.

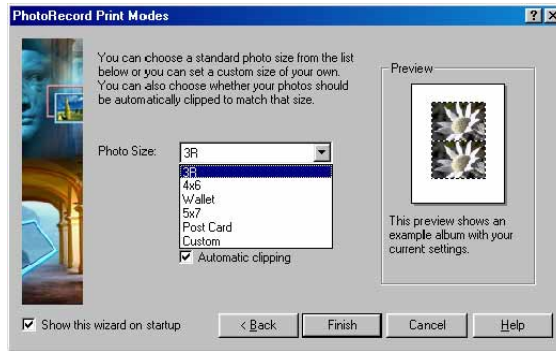


- 4 Specify **Media Type**, **Paper Size**, and **Orientation**.
The **Preview** area shows the print image in relation to the paper.
- 5 Click the **Next** button to proceed to the next step.



6 Specify the **Photo Size**.

If you select the **Automatic clipping** check box, PhotoRecord automatically resizes and clips the photos to fit the specified photo size.



7 Click the **Finish** button.

The **PhotoRecord** window opens. It automatically positions the selected photos to fit the current paper settings.



The Album Control Panel in the **PhotoRecord** window contains the controls shown below.

Note that available artwork options are limited in the **Fixed photo size printing** mode.

However, you can specify the print quality and number of copies to print.



Artwork Options

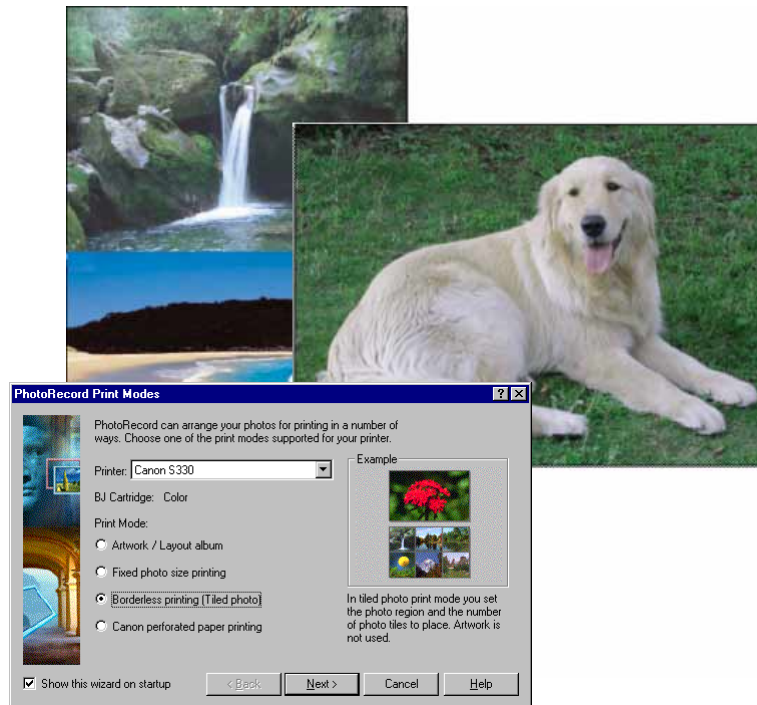
In the **Fixed photo size printing** mode, you can only add text, clip photos, and rotate photos (with some limitations). You cannot resize photos, change layout, or add photo frames or background.

Starting Printing

Click the **PRINT** button to start printing.

Printing in the Borderless Printing Mode (Tiled Photo)

The **Borderless printing (Tiled photo)** option allows you to print photos with no margins left around the photos. This mode requires a printer that supports borderless printing.

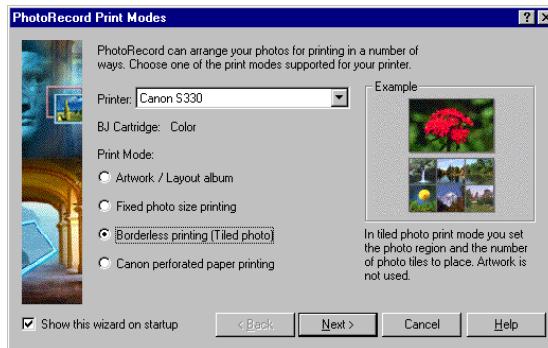


Setting the Print Mode

Select borderless printing and specify paper settings with the number of photos to be arranged as tiles on a single page.

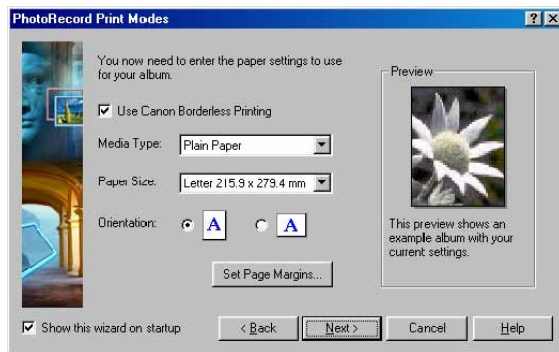
Steps

- 1 Select a photo or photos to print from the Browser Display Area. Click the **PRINT** button and select **Layout** from the **PRINT** button pop-up submenu.
PhotoRecord starts and the **PhotoRecord Print Modes** dialog box opens, ready to start The Print Modes wizard.



- 2 Select the desired printer. Select **Borderless printing (Tiled photo)** from the **Print Mode** options.

- 3 Click the **Next** button to proceed to the next step.



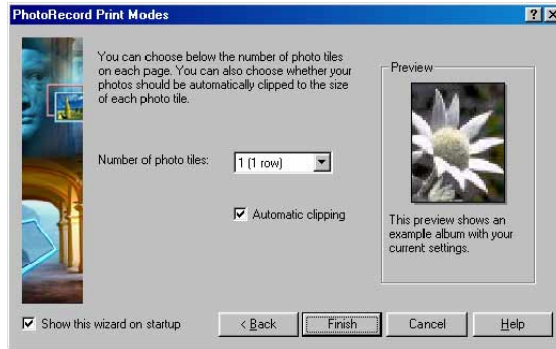
- 4 Specify **Media Type**, **Paper Size**, and **Orientation**.

The **Preview** area shows the print image in relation to the current paper setting. Clicking the **Set Page Margins** button allows you to widen or narrow the area for printing the image data.

You can enable the borderless printing feature by selecting the **Use Canon Borderless Printing** check box.

Note ➤ The **Use Canon Borderless Printing** check box is available only when you are using a printer that supports feature of borderless printing.

- 5 Click the **Next** button to proceed to the next step.



- 6 Specify the number of photo tiles you want to place on a single page.
Select **1 (1 row)** when printing a single photo with no margins.
If you select the **Automatic clipping** check box, PhotoRecord automatically resizes and clips the photos to fit the specified photo size.

7 Click the Finish button.

The **PhotoRecord** window opens. It automatically positions the selected photos to fit the current paper settings.



The Album Control Panel in the **PhotoRecord** window contains the controls shown below.

Note that available artwork options are limited in the **Borderless printing (Tiled photo)** mode.

However, you can specify the print quality and number of copies to print.



Artwork Options

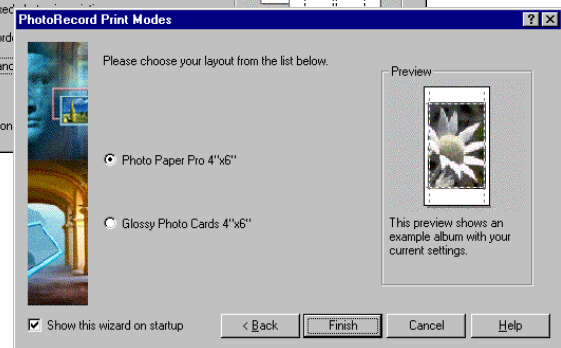
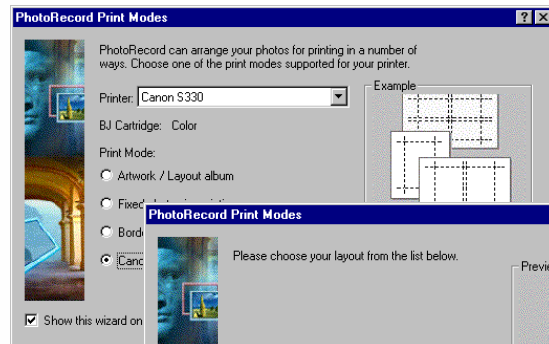
In the **Borderless printing (Tiled photo)** mode, you can only add text, clip photos, and rotate photos (with some limitations). You cannot resize photos, change layout, or add photo frames or background.

Starting Printing

Click the **PRINT** button to start printing.

Printing on Canon Perforated Paper

You can easily print with Canon Perforated Paper in a just-fit layout.

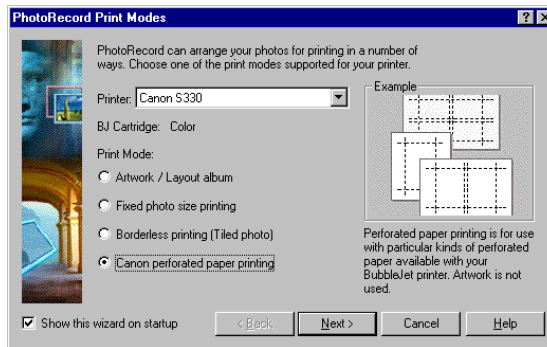


Setting the Print Mode

You can print your photos on Canon perforated paper by simply selecting the paper type. PhotoRecord automatically aligns the photos with the perforations.

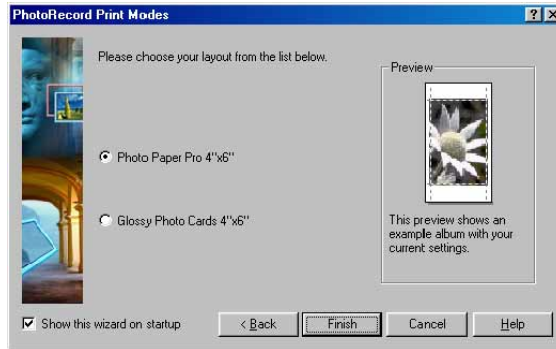
Steps

- 1 Select a photo or photos to print from the Browser Display Area. Click the **PRINT** button and select **Layout** from the **PRINT** button pop-up submenu.
The PhotoRecord starts and the **PhotoRecord Print Modes** dialog box opens, ready to start The Print Modes wizard.



- 2 Select the desired printer. Select **Canon perforated paper printing** from the **Print Mode** options.

- 3 Click the **Next** button to proceed to the next step.



- 4 Specify the type of Canon perforated paper.
The **Preview** area shows how the photos are arranged under the current settings.

5 Click the **Finish** button.

The **PhotoRecord** window opens. It automatically positions the selected photos to fit the current paper settings.



The Album Control Panel in the **PhotoRecord** window contains the controls shown below.

Note that available artwork options are limited in the **Canon perforated paper printing** mode.

However, you can specify the print quality and number of copies to print.



Artwork Options

In the **Canon perforated paper printing** mode, you can only add text, clip photos, and rotate photos (with some limitations). You cannot resize photos, change layout, or add photo frames or background.

Starting Printing

Click the **PRINT** button to start printing.

About Canon Perforated Paper

This section briefly describes Canon perforated paper.

The photos printed on Canon perforated paper can easily be cut apart along the perforated lines. This relatively thick, high glossy paper lets you print photo-quality images without blank portions around them. Types of Canon perforated paper are:

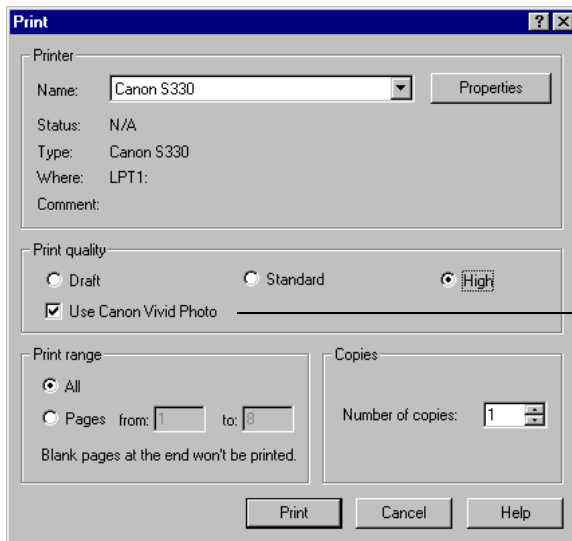
Glossy Photo Card <FM-101>

Photo Paper Pro <PC-101 S>

Starting Printing

When you have finished all necessary steps for the page layout, click the **PRINT** button to start printing.

The **Print** dialog box appears.



Selecting the **Use Canon Vivid Photo** check box enables the Vivid Photo Printing feature. It will reproduce blues and greens in compensated vivid colors.

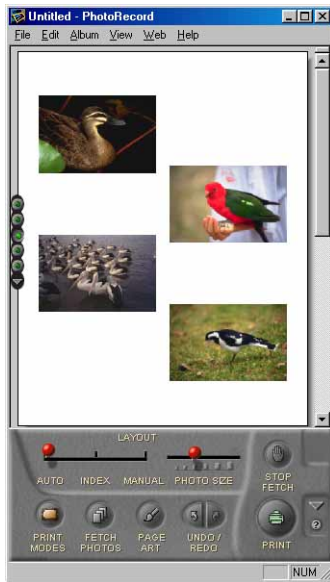
Click the **Print** button to start printing.

Artwork



You can apply artwork to your photos placed in the **PhotoRecord** window. You can clip photos, add a background and photo frames, change the layout, and insert text.

- Page Art
- Changing Layout
- Adding Text
- Clipping a Photo



Clipping

You can specify an area of a photo image to clip and print. This does not affect the original photo.

Page Art

You can add a frame to each photo or a background to the album page.



Adding text

You can insert text anywhere on your page. Use this feature to add photo captions, page titles, and so on.

Changing layout

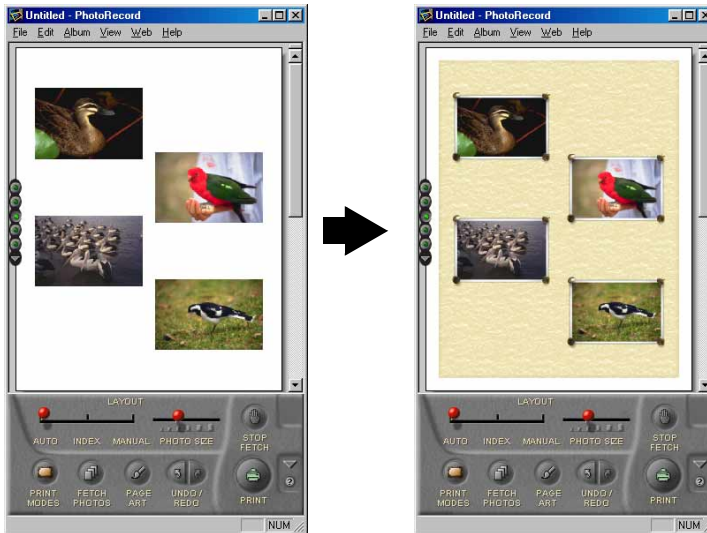
You can move photos anywhere on your page.
You can enlarge or reduce the photos.
You can also rotate or remove the photos.



Note ➤ Some of the above edit functions may be only partly available, depending on the **Print Mode** option you have selected.

Page Art

When you are working in the **Artwork/Layout album** mode, you can specify a background for the page currently displayed in the **PhotoRecord** window, or select frames to ornament the photos.

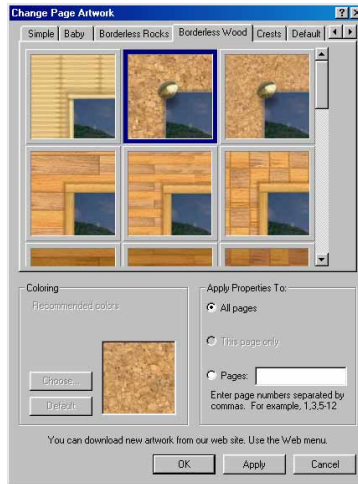


Adding a Page Background

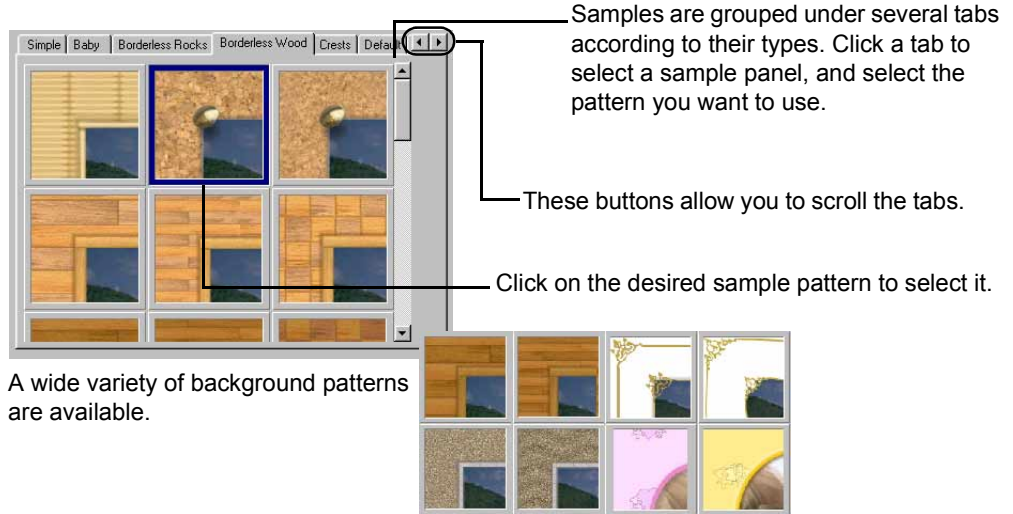
You can specify a background to print with your pages by a simple operation.

Steps

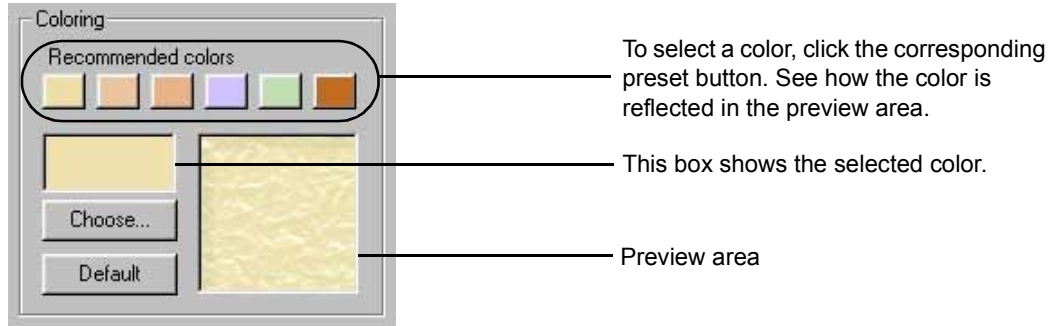
- 1 Click the **PAGE ART** button.
The **Change Page Artwork** dialog box appears.



- 2 Select an artwork pattern which you want to use as a page background.
To select a pattern, select a sample panel and click on the desired sample pattern.



3 Select a color.



Click the **Choose** button to display the color selection window and select a new color. Click the **Default** button to bring back the default color. The **Coloring** function is not available for **Borderless Wood**, **Borderless Rocks**, and some other groups of background patterns.

4 Specify to which page or pages you want to apply the selected background.

Select **All pages** to apply the selected background to all the pages in the **PhotoRecord** window.

Select **This page only** to apply the selected background only to the current page.

Select **Pages:** and enter page numbers in the text box if you want to apply the selected background to specified pages.


5 Click the **OK** button.

The **Change Page Artwork** dialog box closes and the selected background is reflected in the **PhotoRecord** window.

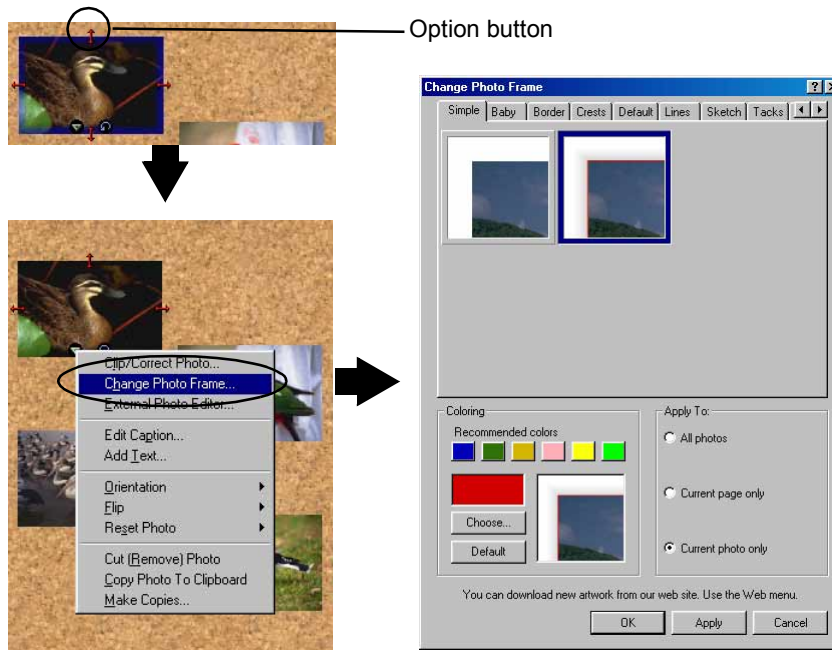
If you click the **Apply** button, the selected background is reflected in the **PhotoRecord** window without closing the **Change Page Artwork** dialog box.

Adding a Photo Frame

You can specify a frame to ornament a photo by a simple operation.

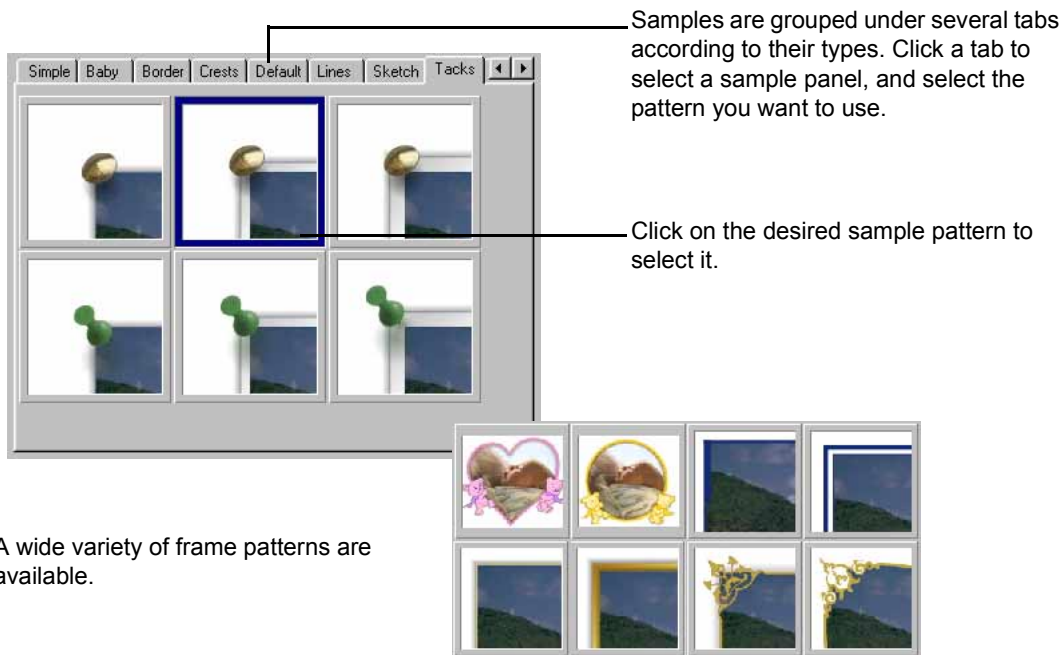
- 1 Select a photo and click the  (option button) to open a pop-up menu, and then select **Change Photo Frame**.

The **Change Photo Frame** dialog box appears.



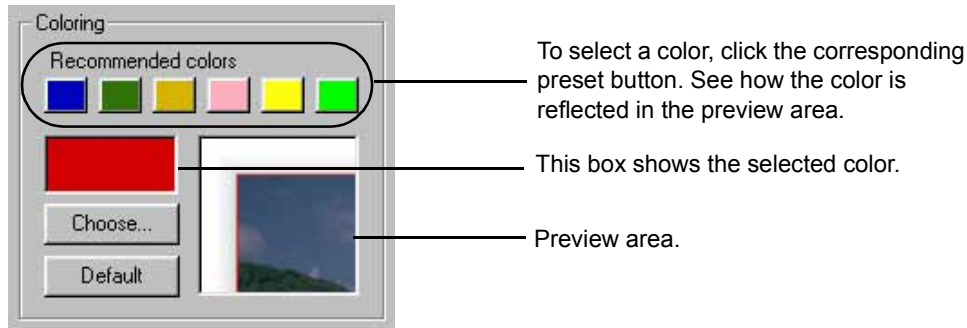
- 2 Select a frame pattern which you want to use as a photo frame.

To select a pattern, select a sample panel and click on the desired sample pattern.



A wide variety of frame patterns are available.

3 Select a color.



Click the **Choose** button to display the color selection window and select a new color. Click the **Default** button to bring back the default color. The **Coloring** function is not available for **Wood**, **Tacks**, and some other groups of frame patterns.

4 Specify to which photos or pages you want to apply the selected frame.

Select **All photos** to apply the selected frame to all the photos in the **PhotoRecord** window.

Select **Current page only** to apply the selected frame only to the photos in the current page.

Select **Current photo only** to apply the selected frame only to the photo selected in the **PhotoRecord** window.

5 Click the **OK** button.

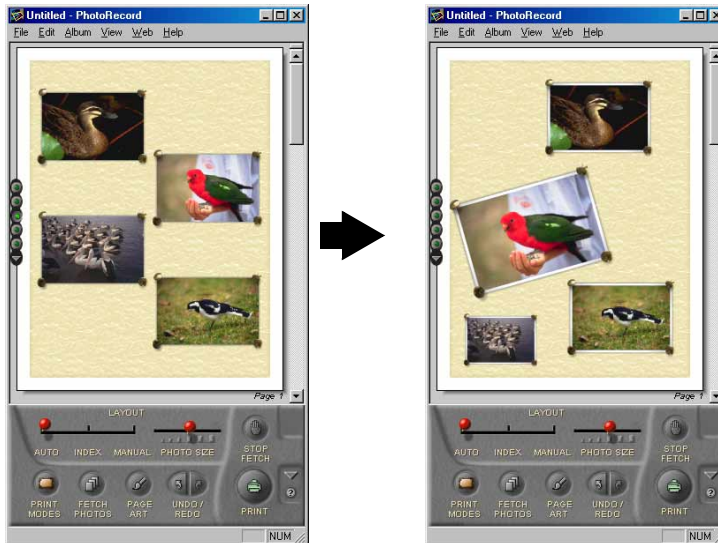
The **Change Photo Frame** dialog box closes and the selected frame is reflected in the **PhotoRecord** window.

If you click the **Apply** button, the selected frame is reflected in the **PhotoRecord** window without closing the **Change Photo Frame** dialog box.

Changing Layout

When you are working in the **Artwork/Layout album** mode, you can re-position the photos in the **PhotoRecord** window to make up a new layout.

You can rotate or resize the photos. You can also remove the photos from the layout.



The clipping and rotating functions are also available in the other print modes, but each with some limitations.

Processing of the photos by resizing, rotating, clipping, or removing them does not affect the original photo image data. The result is reflected only on the print pages.

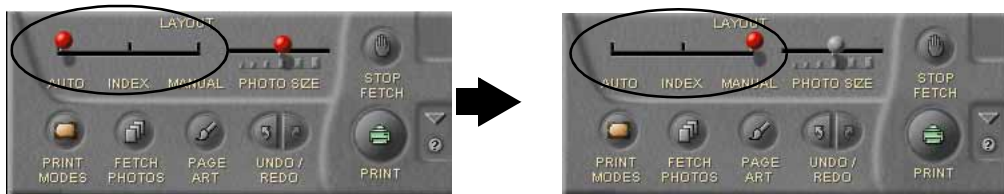
Re-positioning the Photos

You can re-position (move) the photos within the **PhotoRecord** window.

If you have selected **Layout** from the **PRINT** button pop-up submenu in the **Artwork/Layout** album mode, you can freely move the photos to a new position by drag-and-dropping in the window.

Steps

- 1 Set the **LAYOUT** slide switch at **MANUAL**.



Note ➤ If the switch is set at **AUTO**, dragging a photo moves not only the selected photo but also all the other photos.

- 2 Select and mouse-drag a photo wherever you want to place it.



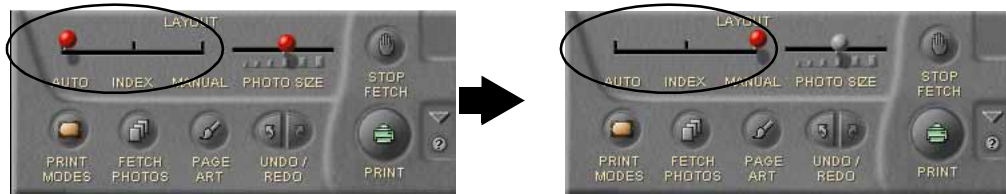
Note ➤ When the current print mode is not **Artwork/Layout album** (including **Index layout**), the basic layout cannot be modified. You can only change the order of the photos by mouse-dragging operation.

Resizing the Photos

When you are working in the **Artwork/Layout album** mode, you can enlarge or reduce the photos using the mouse-dragging operation. You cannot resize the photos when working in other print modes.

Steps

- 1 Set the **LAYOUT** slide switch at **MANUAL**.



Note ► If the switch is set at **AUTO**, dragging a photo resizes not only the selected photo but also the other photos.

- 2 Select the photo you want to resize. Ensure that the photo is in the Resize mode. A red arrow appears on each of the four borders.



Resize mode and Rotate mode

If you see a red arrow on each of the four borders of a selected photo, the photo is in the Resize mode.

If you see a blue arrow at each of the four corners of a selected photo, the photo is in the Rotate mode.

Resize mode



Click here to select the Rotate mode.

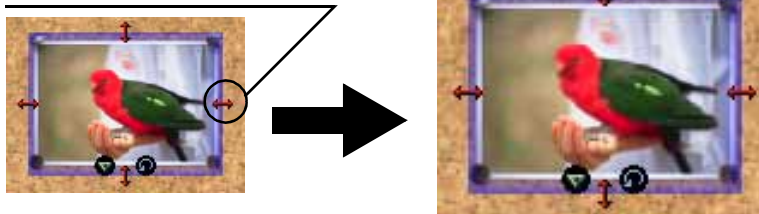
Rotate mode



Click here to select the Resize mode.

- 3 Put the mouse cursor over any of the red arrows and drag until the image is enlarged or reduced to the desired size.

Put the mouse cursor here and drag.



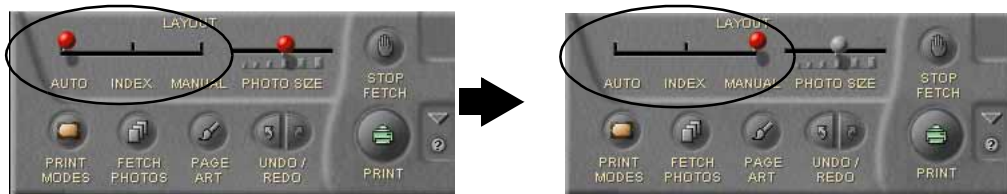
Rotating the Photos

When you are working in the **Artwork/Layout album** mode, you can rotate the photos to any desired angles using the mouse-dragging operation.

You can only specify a 180-degree rotation when working in the other print modes.

Steps

- 1 Set the **LAYOUT** slide switch at **MANUAL**.



Note ➤ If the switch is set at **AUTO**, dragging a photo rotates not only the selected photo but also all the other photos.

- 2 Select the photo you want to rotate. Ensure that the photo is in the Rotate mode. A blue arrow appears at each of the four corners.



Resize mode and Rotate mode

If you see a red arrow on each of the four borders of a selected photo, the photo is in the Resize mode.

If you see a blue arrow at each of the four corners of a selected photo, the photo is in the Rotate mode.

Resize mode



Click here to
select the Rotate
mode.

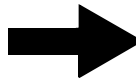
Rotate mode



Click here to
select the Resize
mode.

- 3 Put the mouse cursor over any of the blue arrows and drag until the image rotates to the desired angle.

Put the mouse cursor here and drag.



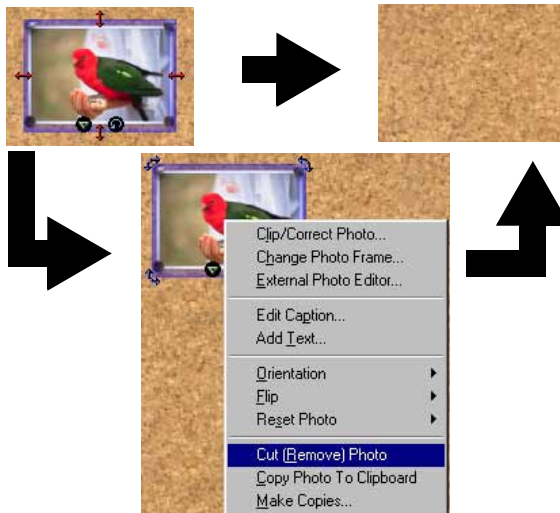
Removing a Photo

You can remove (clear) a photo from the layout in the **PhotoRecord** window.

Here removing a photo means just excluding it from the print page. It does not mean deleting the actual image file from your computer.

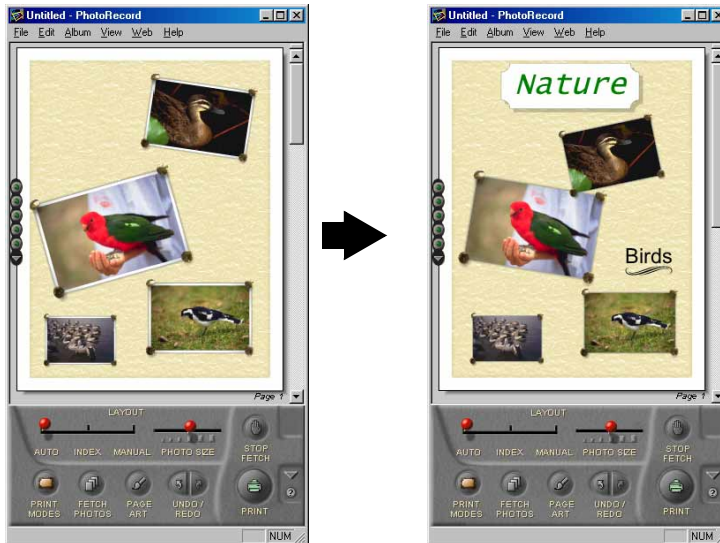
Steps

- 1 Click the option button attached to the photo you want to remove. A pop-up menu appears.
- 2 From the menu, select **Cut (Remove) Photo**.
The selected photo is removed.



Adding Text

You can add text to your pages in the **PhotoRecord** window. Use this function to insert photo captions, page titles, and so on.

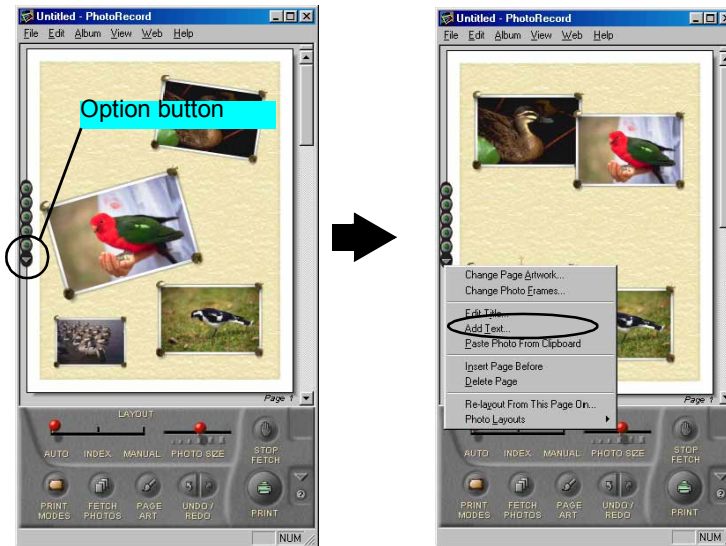


Adding and Positioning Text

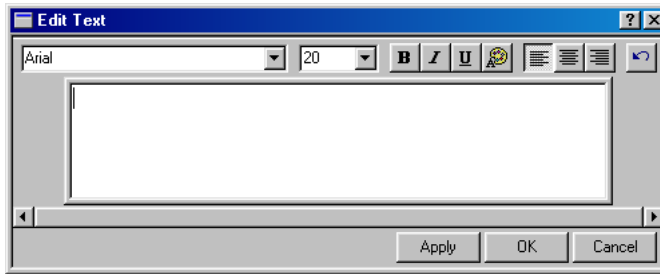
You can type text in the **Edit Text** box to put it on your pages in the **PhotoRecord** window.

Steps

- 1 Click the option button on the left side of the current page.

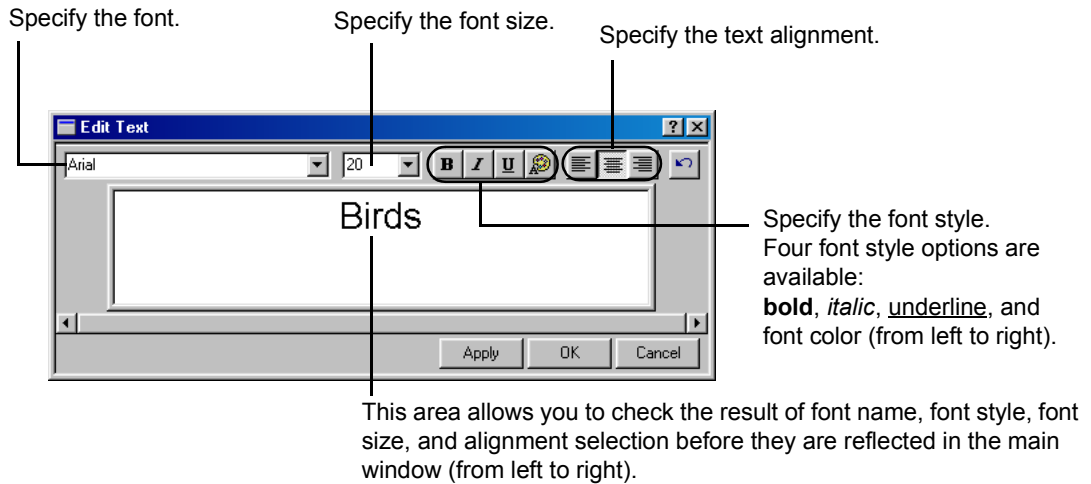


- 2 The option menu appears. Select **Add Text** from the menu.
The **Edit Text** dialog box appears.



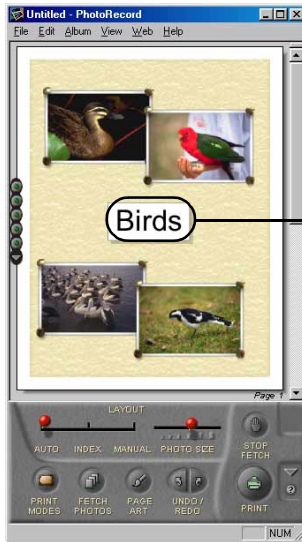
There is an alternative to display the **Edit Text** dialog box. Ensure that no photo is selected, then right-click within the **PhotoRecord** window. From the pop-up menu, select **Add Text**.

3 Type in a text string.



4 Click the **OK** button.

The typed text will appear on the current page.



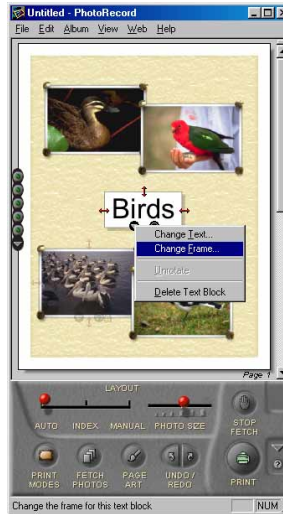
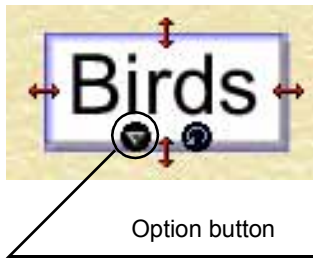
You can change the ornament of each text block. You can also move a text block wherever you want to place it, by dragging it with the mouse.
You can always re-edit your text later, by double-clicking the text block to re-open the **Edit Text** dialog box.

Applying Artwork to Text

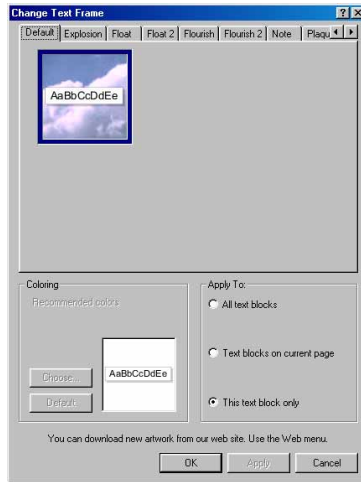
You can specify ornament for each of your text.

Steps

- 1 Select a text block and click the option button.

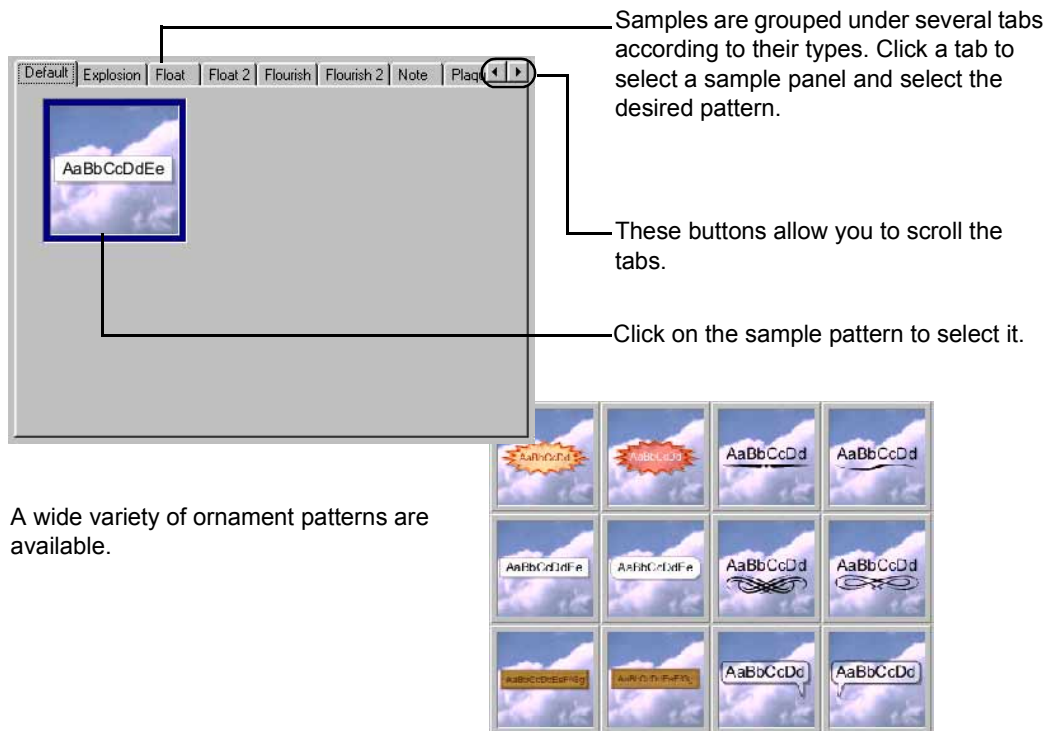


- 2 The option menu appears. Select **Change Frame** from the menu.
The **Change Text Frame** dialog box appears.

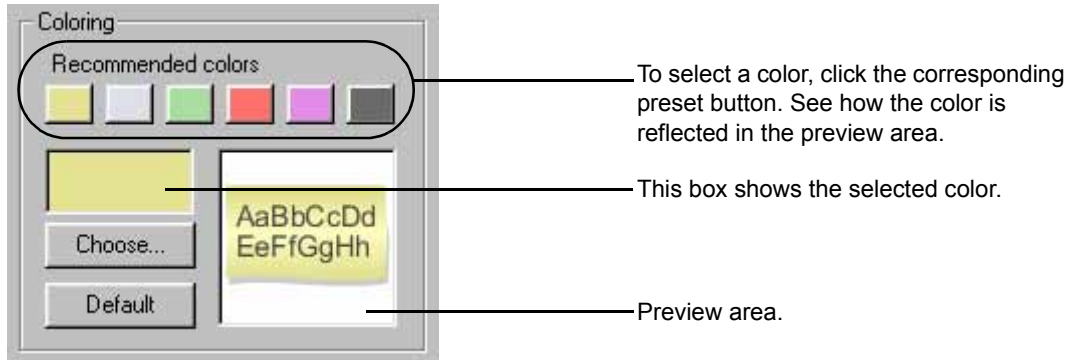


3 Select an artwork pattern you want to apply to the text block.

To select an ornament pattern, select a sample panel and click on the desired sample pattern in the panel.



4 Select a color.



Click the **Choose** button to display the color selection window and select a new color. Click the **Default** button to bring back the default color.

5 Specify to which text blocks you want to apply the selected ornament pattern.

Select **All text blocks** to apply the selected ornament pattern to all the text blocks in the **PhotoRecord** window.

Select **Text blocks on current page** to apply the selected ornament pattern only to the text blocks on the current page.

Select **This text block only** to apply the selected ornament pattern only to the text block currently selected.

6 Click the **OK** button.

The **Change Text Frame** dialog box closes and the selected ornament pattern is reflected in the **PhotoRecord** window.

If you click the **Apply** button, the selected ornament pattern is reflected in the **PhotoRecord** window without closing the **Change Text Frame** dialog box.

Adding a Caption to a Photo

When you are working in the **Artwork/Layout album** mode, the entered caption is displayed just below the selected photo. In the other print modes, the entered caption is displayed inside one of the corners of the selected photo. You can move the caption to another corner of the photo.

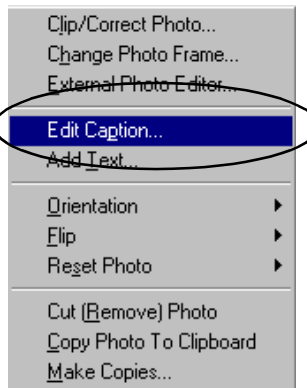
There is an automated way of printing the photo data file names and/or the date and time of photographing as a caption. Specify captions from the **Preferences** dialog box of the ZoomBrowser EX.

Steps

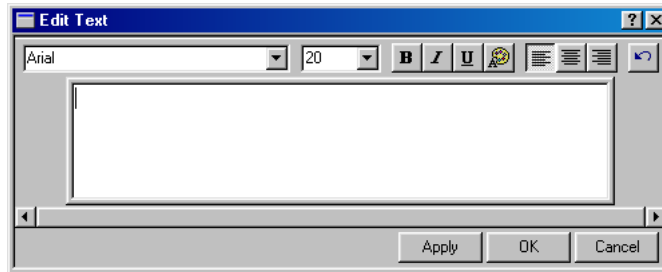
- 1 Select a photo and click the option button.



Option button



- 2 A pop-up menu appears. Select **Edit Caption** from the menu to display the **Edit Text** dialog box.

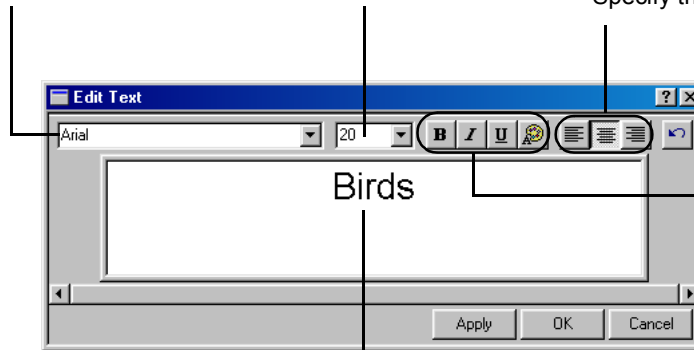


- 3 Type in a text string.

Specify the font.

Specify the font size.

Specify the text alignment.



Specify the font style.
Four font style options are available:
bold, *italic*, underline, and font color (from left to right).

This area allows you to check the result of font name, font style, font size, and alignment settings before they are reflected in the main window (from left to right).

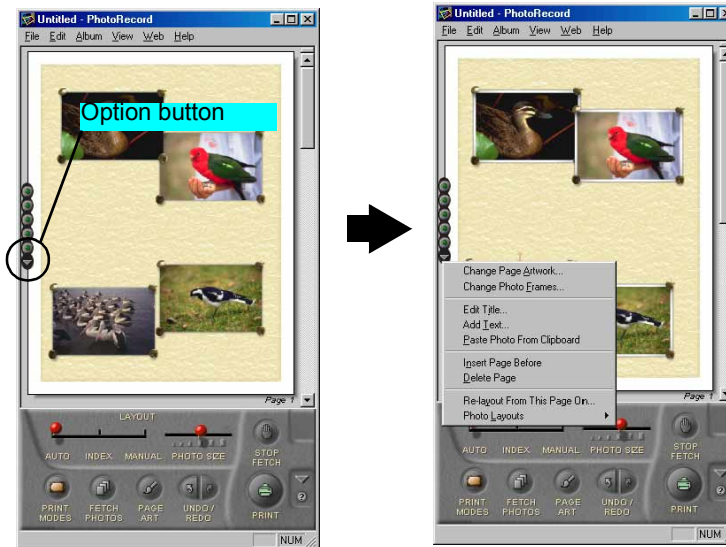
- 4 Click the **OK** button.
The caption appears on the current page.

Inserting a Page Title

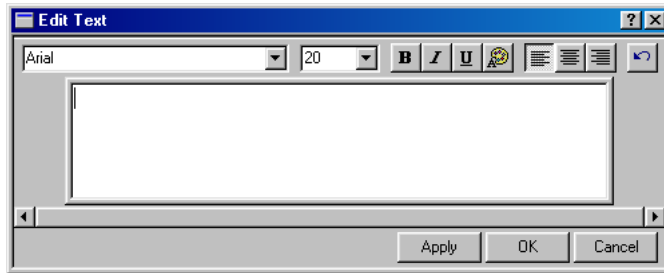
A page title is always inserted at the top of the printable area. You can align the text in the text block by selecting an alignment option (align left, center text or align right). The text block itself does not move from its fixed position.

Steps

- 1 Click the option button on the left side of the current page.



- 2 A pop-up menu appears. Select **Edit Title** from the menu to display the **Edit Text** dialog box.

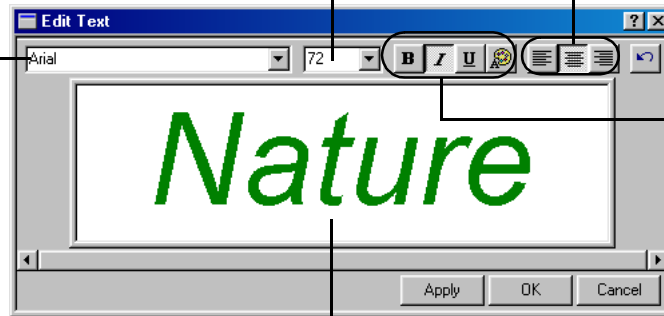


3 Type in a text string.

Specify the font.

Specify the font size.

Specify the text alignment.



Specify the font style.
Four font style options are available:
bold, *italic*, underline, and font color (from left to right).

This area allows you to check the result of font name, font style, font size, and alignment settings before they are reflected in the main window (from left to right).

4 Click the **OK** button.

The title is displayed at the top of the printable area. You can align the text in the text block using an alignment option (align left, center text, or align right).

You can apply artwork (ornament) to the text.

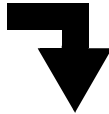
Clipping a Photo

You can clip your photos displayed in the **PhotoRecord** window.

The photo-clipping feature allows you to print part of a photo image. It does not affect the original photo image file.

Steps

- 1 In the **PhotoRecord** window, double-click the photo you want to clip. The **Photo Viewer** window appears.



As an alternative, select the photo first, right-click to open a pop-up menu, and then select **Clip/Correct Photo** from the menu.



Photo Viewer window



Photo Control Panel

- 2 On the Photo Control Panel, click the **CLIP** button to enter the **Clipping** mode. Drag the clipping cursor over the **Photo Viewer** window until the part of the photo you want to print is enclosed in an outline.

To cancel the selection, click the **CLIP** button again.

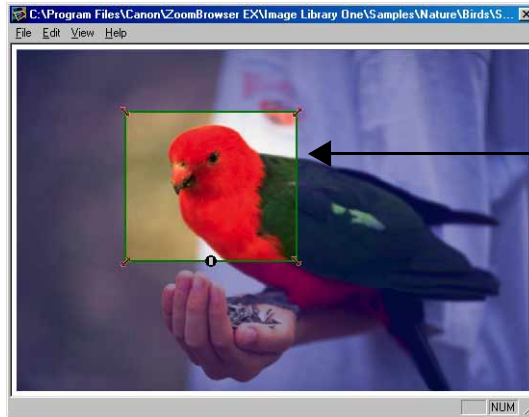


Photo area to be clipped

- 3 Click the **CLOSE** button on the Photo Control Panel.



Clipped photo

Note ➤ The size of the clipped area depends upon the **Artwork/Layout album** mode option you selected. When the selected mode is **Fixed photo size printing**, **Borderless printing (Tiled photo)**, or **Canon perforated paper printing**, the clipped area is fixed in its height-width ratio.

Printing with Easy-PhotoPrint



Easy-PhotoPrint is an application program that allows you to make high-quality prints from the images you recorded with your digital camera in a quick and easy fashion. You can print a selected image on 4 x 6 inch (approx. 10 x 15 cm) paper or a photo index that contains thumbnails.

Easy-PhotoPrint supports Exif Print (Exif 2.2).

The image captured with an Exif Print-compliant digital camera can be optimized using data, such as camera settings (white balance, exposure time) etc, stored at the time of shooting, yielding extremely high-quality prints.

Note ➤ Easy-PhotoPrint can handle only JPEG files (file name extension: .jpg and .jpeg). Other files are not displayed on the screen.

- Starting Easy-PhotoPrint
- Selecting Images
- Selecting Paper
- Layout Printing

Starting Easy-PhotoPrint

You can start Easy-PhotoPrint by either of the following two methods:

Starting by Pressing the Start Button

- 1 Click **Start** and select **Programs - Canon Utilities - Easy-PhotoPrint - Easy-PhotoPrint**.

Note ➤ For Windows XP, click **Start** and select **All Programs - Canon Utilities - Easy-PhotoPrint - Easy-PhotoPrint**.

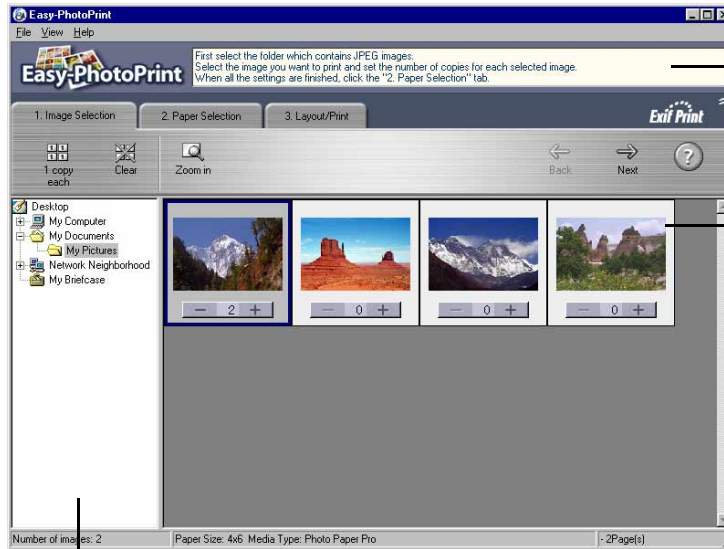
Starting from ZoomBrowser EX

- 1 Select an image with ZoomBrowser EX.
- 2 Select **Print** from the **Files** menu of ZoomBrowser, and then select **Easy-PhotoPrint**.

Note ➤

- Click the **Print** button to select **Easy-PhotoPrint**.
- Easy-PhotoPrint can be accessed from ZoomBrowser EX Ver. 3.3 or later.

Selecting Images



Guidance

Thumbnail

Reduced images contained in the folder selected from the folder window are displayed.

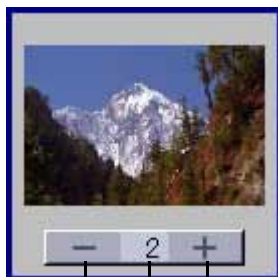
Folder Window

The folder window lists folders contained in your computer. Selecting a folder displays the image files contained there as thumbnails. The folder window is not displayed when Easy-PhotoPrint is started from ZoomBrowser EX.



- 1 Select the folder that contains the image you want to print from the folder window on the **1. Image Selection** sheet.

Note ➤ The folder window is not displayed when Easy-PhotoPrint is started from ZoomBrowser EX. Only the images selected in Zoom Browser are displayed.

- 2 Click  on the thumbnail of the image you want to print and specify the number of copies.



- The number of copies increases.
- The specified number of copies is displayed.
- The number of copies decreases.

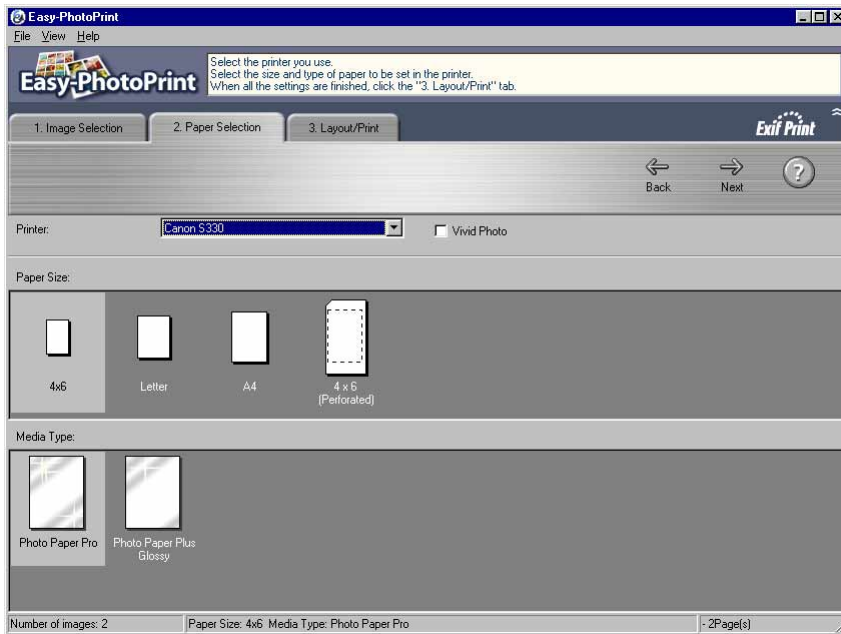
The number of copies increases by 1 each time you click  and it decreases by 1 each time you click . Left-clicking the button will reset the number of copies to 0. The specified number of copies is displayed between the buttons.

To view details of the selected image, click the image and then click **Zoom in...**. The enlarged image will be displayed in a separate window. You can also zoom in on the image by double-clicking it.

- Note** ➤
- A maximum of 99 copies can be specified for each image. A maximum of 10000 copies can be specified for the selected images. These numbers of copies become smaller when the free spaces in the memory and hard disk are small.
 - Thumbnails can be displayed on the **1. Image Selection** sheet in three sizes. Select **Thumbnail Size** from the **View** menu on the **1. Image Selection** sheet and then select **Small**, **Medium**, or **Large** to specify a thumbnail size.

Selecting Paper

You can select the printer and paper you want to use for printing.



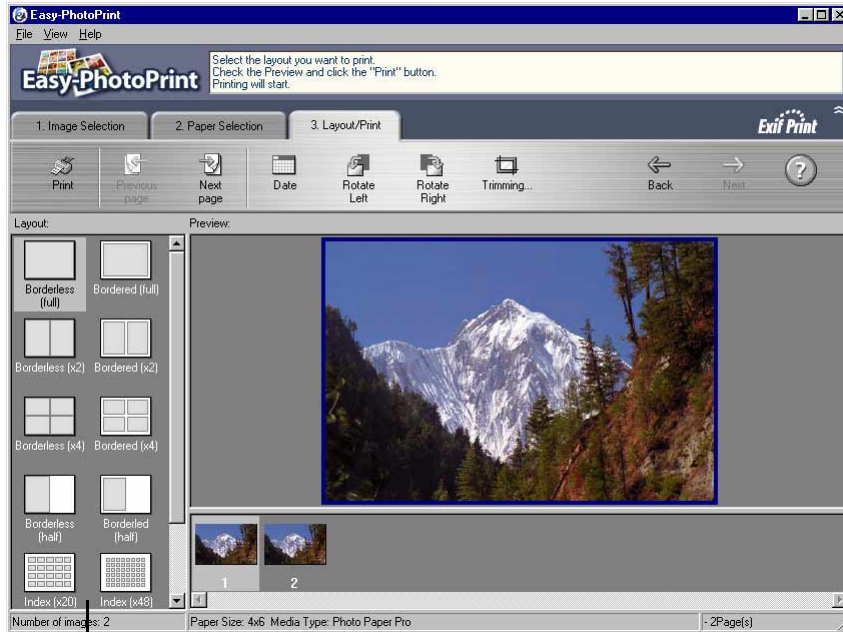
Steps

- 1 Select the printer you use from **Printer** on the **2. Paper Selection** sheet.
- 2 Select the size of the paper you use from **Paper Size**.
Only the sizes of paper that can be used for the selected printer are displayed.
- 3 Select the type of the paper you use from **Media Type**.
Only the types of paper available in the selected size are displayed.

- Note** ►
- Checking the **Vivid Photo** check box, you can print the selected image with more vivid colors.
 - If you have selected **Paper Plus Glossy** from Media Type, it will take much time to print on other types of paper. In such a case, select a paper type again in the following manner:
 - (1) Select the type of the media you use for printing from **Media Type**.
 - (2) Close Easy-PhotoPrint.
 - (3) Start Easy-PhotoPrint again, select a number of copies, and open the **2. Paper Selection** sheet to check the paper type selected now.

Layout Printing

You can select a desired layout and print an image in the selected layout.



Layout

Select a layout from the **Layout** list box. The image(s) is displayed in the selected layout in the preview window.

The procedure for layout printing is as follows:

Steps

1 Ensure that the printer is turned on and paper is loaded in the printer.

2 Select **Layout**.

Layout types displayed here vary depending on the selected printer, paper size, and media type.

Note ➤ Rotate and/or trim the image as required.

3 Click **Print**.

Printing starts.

When Easy-PhotoPrint is started from ZoomBrowser EX, Easy-PhotoPrint is closed automatically at the end of printing and the ZoomBrowser EX screen reappear.

You can cancel printing within five seconds pass after **Print** is clicked. To cancel printing, click **Cancel** in the displayed dialog box.

How to Use Online Help



Some of the photo applications provide you with Online Help information about functions and operations. It contains a brief description of operational steps that you can read on the screen while operating the program.

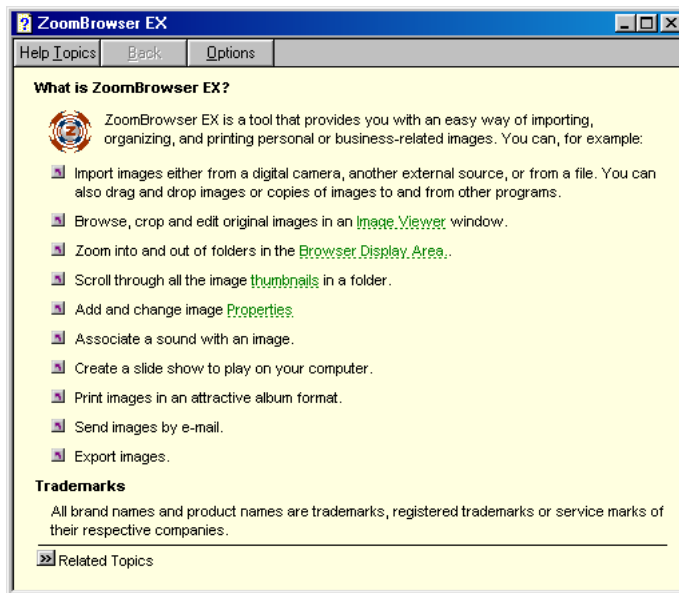
This chapter informs you how to use the Online Help of each application.

Online Help of ZoomBrowser EX

Two sets of Online Help are accessible from the Help menu of ZoomBrowser EX: What is ZoomBrowser EX? and Show Quick Tips.

What is ZoomBrowser EX?

Look up explanations about major functions and operations of ZoomBrowser EX.



Show Quick Tips

You can choose whether or not to display Quick Tips at an appropriate time while working with ZoomBrowser EX. Relevant topics are featured when using some of the major functions.

How to Use

- 1 Open the **Help** menu, and select **Show Quick Tips**.



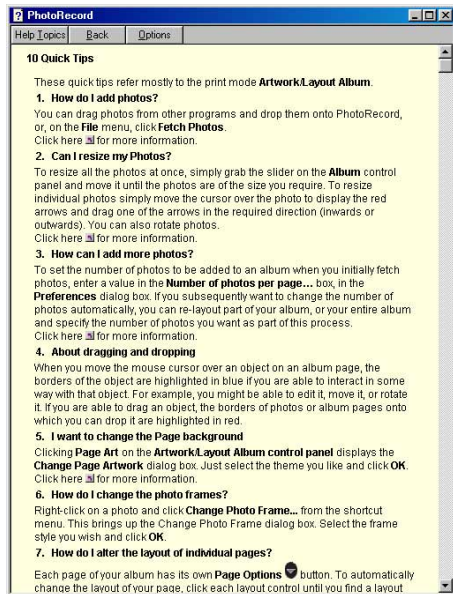
- 2 From the submenu, select (check mark) to display Tips you need. Quick Tips will appear as soon as you try the check marked feature. Closing the Tips window unchecks that feature and Tips will stop appearing.
You can either check mark all or uncheck all by selecting the **Tick All** or **Untick All** option command.

Online PhotoRecord Help

Two sets of Online Helps are accessible from the Help menu of PhotoRecord: Contents & Index and What's This?

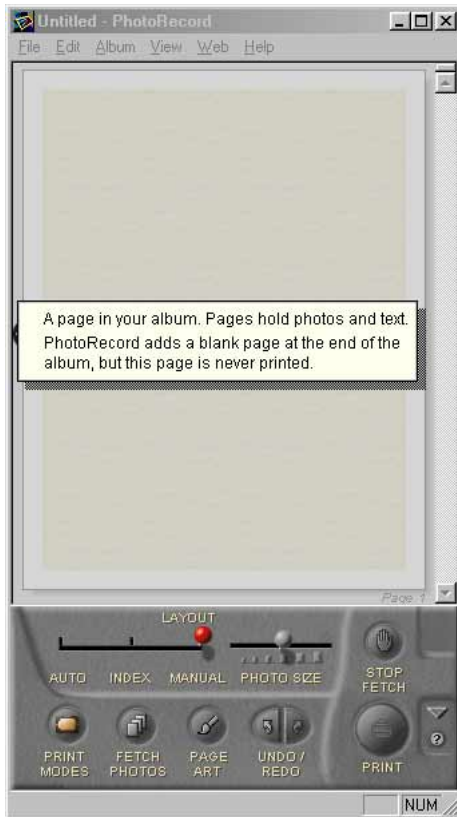
How to Use

From the **Help** menu, click **Contents & Index**. You can look up explanations about the major functions and operations of PhotoRecord.



What's This?

To understand what a button or an area means, select **What's This?** from the **Help** menu. The cursor turns into a ? mark. Point the desired object to display a brief explanation.



Index



A

Adding Sound to Images	52
Adding text	120
Adjusting Image Colors	45
Album Control Panel	96, 101, 106, 111, 115
Applying artwork	12
Artwork	118, 141
artwork	6
Automation Wizard	61, 65
Automation wizard	10

B

Borderless Printing	7
Borderless Printing Mode	107
Browser Display	18
Browser Display Area	21, 26, 37, 42, 47, 55, 98

C

Camera Window	10, 69, 71, 73
Canon Utilities	13
captions	145
Changing Layout	128
Changing layout	120
Changing Location of Image Files	37

Clipping	119
Clipping a Photo	150
CONNECT CAMERA button	76
Control Panel	21, 22, 25
Creating Panoramic Photo Using PhotoStitch	18
Creating Panoramic photo Using PhotoStitch	18
Cropping Images	44

D

DELETE button	22, 38, 78
Deleting Images	38
digital camera	9
DOWNLOAD button	78

E

Editing Images from Other Application Programs	58
Editor Application	58
E-mail	55
Exif Print	4

F

Fixed Photo Size	102
fixed photo size printing	7
font name	139
font size	139

H

Headers	147
HELP button	83

I

Image Database	27
IMAGE INFO button	81
Image Library One	28
IMPORT IMAGES button	22
Importing Images	60
Importing images	10
Importing Images by Drag-and-Drop Operation	86
Importing Images from a TWAIN Device	84
Importing Images from the Camera Window	69
Importing Images with the Automation Wizard	60, 61

L

layout	6
--------	---

M

Magnifier	26
memory card	10
Merging Panoramic Images by PhotoStitch	18

O

Online Help	160
Opening Image Files from Other Applications	58

P

Page Art	119, 121
Page Art Options	96, 101, 106, 111, 115
Page Background	122
page header	147

Perforated Paper	112, 113
perforated paper	12, 116
Photo Control Panel	151
Photo Frame	125
photo Index	93
photo index	6, 89
Photo Size	102
Photo size	105
photo size	7
photo-clipping	150
PhotoRecord window	95, 101, 129, 150
PhotoStitch	18
Previewing the Layout before Printing an Index	93
Print an Index	90
PRINT button	22, 79
Print Mode	103, 108, 113
Printing from PhotoRecord	88
Printing the Photo Index	89
Processing 3D Images by 3D-PhotoPrint	19
Processing Images for Sending by E-mail	55
Processing Images from Image Viewer	43

R

REFRESH button	22
Register Image Folder dialog box	33
Removing a Photo	135
Re-positioning the Photos	129
Resizing the Photos	131
ROTATE button	79
Rotating the Photos	133

S

Saving Images after Processing	46
scanner	9
scanning	9
Scroll Mode	22, 25
SELECT button	77
Selecting Automatic Image Downloading	62
Selecting layout	11
Set Logical Volume Name dialog box	33
Setting the Print Modes	98
Shooting	9
SHOW PROPERTIES button	22
Slide Show	47
Slide Show Control Buttons	50
SLIDE/DPOF button	82

T

Text block	141
Text Blocks	137
Thumbnails	21, 74
thumbnails	37
tiled photo	7
Time Tunnel	51
Tool switching buttons	23
Tree View	21, 37, 71
TWAIN	84

U

UPLOAD button	80
---------------	----

V

VIEW IMAGE button	22
View Mode buttons	22

Z

Zoom Mode	22, 24
ZoomBrowser EX	20