

Canon

imageCLASS

M F 5 7 0 0 Series

Quick Reference Guide



SUPER
GB

Please read this guide before operating this equipment.
After you finish reading this guide, store it in a safe place
for future reference.

ENG

Manuals for the Machine

The manuals for this machine are divided as follows. Please refer to them for detailed information. Depending on the system configuration and product purchased, some manuals may not be needed.



Guides with this symbol are printed manuals.



Guides with this symbol are PDF manuals included on the accompanying CD-ROM.

- **Setting Up the Machine**
- **Software Installation**
- **Network setting (Only for the MF5770 model.)**

Set-Up Sheet



- **Introduction on Machine Use**

Quick Reference Guide (This Manual)



- **Copying, Printing Instructions**
- **Troubleshooting**

User's Guide



- **Fax Instructions**
- **Troubleshooting**

Facsimile Guide



Only for the MF5750/MF5770 models.

- **Software Installation and Instructions**
- **Printing, Scanning and PC Faxing Instructions**
- **Troubleshooting**

Software Guide



- **Remote User Interface Instructions**

Remote UI Guide



Only for the MF5770 model.

- **Network Connectivity and Setup Instructions**

Network Guide



Only for the MF5770 model.

Model Name

- F146500 (imageCLASS MF5730)
- F146502 (imageCLASS MF5750)
- F146502 (imageCLASS MF5770)

About This Manual

Symbols



CAUTION

Cautions tell you how to avoid actions that could injure you or damage your machine.



IMPORTANT

Important indicates operational requirements and restrictions. Read them carefully to operate the machine correctly and to avoid damage to the machine.



NOTE

Notes provide advice for using your machine more effectively, describe operating restrictions, and explain how to avoid minor operating difficulties.

Notations

Press **[Start]**.

If **<DISPLAY LANGUAGE>** appears,

Click **[OK]**.

User's Guide

Keys on the control panel

Messages on LCD

Buttons and menu items on the PC screen

Manual names

Contents

Preface

Trademarks	3
Copyright	3
Notice	3
Legal Limitations on the Usage of Your Product and the Use of Images ..	4

1 Safety Instructions

1.1 General	5
1.2 Location for the Machine	7
1.3 Laser Safety Information	7
200-240V Model	7
1.4 Customer Support	8

2 Operation

2.1 Components	9
2.2 Operation Panel	10
2.2.1 MF5770	10
2.2.2 MF5750	10
2.2.3 MF5730	11
2.3 Enter Characters	12

3 Main Functions

3.1 Set Paper Size	13
3.2 Load the Document	13
3.2.1 Platen Glass	13
3.2.2 ADF	14
3.3 Copy	15
3.3.1 Resolution	15
3.3.2 Density	15
3.3.3 Copy Ratio (Enlarge/Reduce)	15
3.4 Print	16
3.5 Scan	16

4 Maintenance

4.1 Replace Cartridge	17
-----------------------------	----

5 Troubleshooting

5.1 Remove Jammed Paper	19
5.1.1 Inside Machine	19
5.1.2 ADF	23

Preface

Thank you for purchasing the Canon imageCLASS MF5700 Series. Please read this manual to learn the basic operation of the machine. If you have not set up the machine, see *Set-Up Sheet* first.



Super G3 is a phrase used to describe the new generation of fax machines that use ITU-T V.34 standard 33.6 Kbps* modems. Super G3 High Speed Fax machines allow transmission time of approx. 3 seconds* per page which results in reduced telephone line charges.

* Approx. 3 seconds per page fax data transmission time based on Canon FAX Standard Chart No.1, (Standard Mode) at 33.6 Kbps modem speed. The Public Switched Telephone Network (PSTN) currently supports 28.8 Kbps modem speed or lower, depending on telephone line conditions.

Trademarks

Canon and the Canon Logo are trademarks of Canon Inc.
Microsoft and Windows are either registered trademarks or trademarks of Microsoft Corporation in the United States and/or in other countries. Other brand and product names are trademarks or registered trademarks of their respective companies.

Copyright

Copyright 2005 Canon Inc. All rights reserved.

No part of this publication may be reproduced, transmitted, transcribed, stored in a retrieval system, or translated into any language or computer language, in any form or by any means, electronic, mechanical, magnetic, optical, chemical, manual, or otherwise, without the prior written permission of Canon Inc.

Notice

The information in this document is subject to change without notice.

CANON INC. MAKES NO WARRANTY OF ANY KIND WITH REGARD TO THIS MATERIAL, EITHER EXPRESS OR IMPLIED, EXCEPT AS PROVIDED HEREIN, INCLUDING WITHOUT LIMITATION, THEREOF, WARRANTIES AS TO MARKETABILITY, MERCHANTABILITY, FITNESS FOR A PARTICULAR PURPOSE OF USE OR AGAINST INFRINGEMENT OF ANY PATENT. CANON INC. SHALL NOT BE LIABLE FOR ANY DIRECT, INCIDENTAL, OR CONSEQUENTIAL DAMAGES OF ANY NATURE, OR LOSSES OR EXPENSES RESULTING FROM THE USE OF THIS MATERIAL.

Legal Limitations on the Usage of Your Product and the Use of Images

Using your product to scan, print or otherwise reproduce certain documents, and the use of such images as scanned, printed or otherwise reproduced by your product, may be prohibited by law and may result in criminal and/or civil liability. A non-exhaustive list of these documents is set forth below. This list is intended to be a guide only. If you are uncertain about the legality of using your product to scan, print or otherwise reproduce any particular document, and/or of the use of the images scanned, printed or otherwise reproduced, you should consult in advance with your legal advisor for guidance.

- Paper Money
- Money Orders
- Certificates of Deposit
- Postage Stamps
(canceled or uncanceled)
- Identifying Badges or Insignias
- Selective Service or Draft Papers
- Checks or Drafts Issued by
Governmental Agencies
- Motor Vehicle Licenses and
Certificates of Title
- Travelers Checks
- Food Stamps
- Passports
- Immigration Papers
- Internal Revenue Stamps
(canceled or uncanceled)
- Bonds or Other Certificates of
Indebtedness
- Stock Certificates
- Copyrighted Works/Works of Art
without Permission of Copyright
Owner

1 Safety Instructions

Please read these safety instructions thoroughly before using the machine.

1.1 General

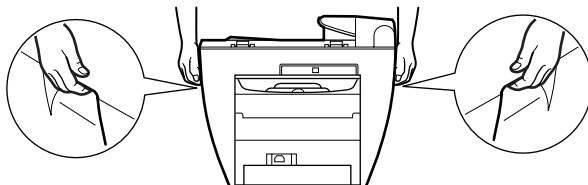


CAUTION

Except as specifically described in *User's Guide*, do not attempt to service the machine yourself. Never attempt to disassemble the machine: opening and removing its interior covers will expose you to dangerous voltages and other risks. For all services, contact your local authorized Canon dealer or the Canon help line.

- Always follow all warnings and instructions marked on the machine.
- Do not use the machine near water. If you spill liquid on or into the machine, unplug it immediately and call your local authorized Canon dealer or the Canon help line.
- The back of the machine includes slots and openings for ventilation. To keep the machine from overheating (which can cause it to operate abnormally and create a fire risk), take care not to block or cover these openings. Do not operate the machine on a bed, sofa, rug, or other similar soft surface, or near a radiator or other heat source. Do not place the machine in a closet or cabinet or on shelves unless adequate ventilation is available.
- Operate the machine only from the type of power source indicated on the label on the back of the machine. If you are unsure of the type of power available from your wall outlets, contact your local power company.
- Make sure the total amperage used by all devices plugged into the wall outlet does not exceed the ampere rating of the outlet's circuit breaker.
- Do not allow anything to rest on the power cord and do not place the machine where the cord will be walked on. Make sure the cord is not knotted or kinked.
- Do not insert object of any kind into the slots or openings on the machine's cabinet, as they could touch dangerous voltage points or short out parts, and result in fire or electric shock.
- Do not allow small objects (such as pins, paper clips, or staples) to fall into the machine. If something does fall into it, unplug the machine immediately and call your local authorized Canon dealer or the Canon help line.
- Do not plug the power cord into an uninterruptible power supply (UPS).
- Always unplug the machine before moving or cleaning it.

- Do not plug the machine into the same circuit as an appliance such as an air conditioner, electric typewriter, television, or copier. Such devices generate electrical noise that can interfere with sending or receiving faxes. (Only for the MF5750/MF5770 models.)
- Whenever you unplug the machine, wait at least 5 seconds before you plug it back in.
- Always unplug the machine during thunderstorms.
- Before you transport the machine, remove the toner cartridge.
- Always lift the machine as shown below:



CAUTION

Unplug the machine and contact your local authorized Canon dealer or the Canon help line in any of these situations:

- If the power cord or plug is damaged or frayed.
- If liquid spills into the machine, or if it is otherwise exposed to rain or liquids.
- If you notice smoke, unusual noises or odor coming from it.
- If the machine does not operate normally when you follow the operating instructions. Adjust only those controls that are covered by the operating instructions in the manuals, or you can damage the machine and require extensive repair work.
- If the machine is dropped or its cabinet damaged.
- If the machine begins performing poorly, and you cannot correct the problem by following the procedures in *User's Guide*.
- This product emits low level electromagnetic waves. If you use a cardiac pacemaker and feel abnormalities, move away from this product and consult your doctor.

1.2 Location for the Machine

Install the machine in a location that meets following conditions:

- A flat, stable, vibration-free surface strong enough to support its weight (about 15 kg).
- Cool, dry, clean, well ventilated.
- Dust-free.
- Stable temperature between 10° and 32.5°C. No extreme temperature fluctuations.
- Relative humidity between 20% and 80%.
- No direct sunlight.
- Near a telephone outlet, to allow for an easy connection of the telephone line to the machine. (Only for the MF5750/MF5770 models.)
- Near an electrical wall outlet that provides 200 to 240-volt AC (50 to 60 Hz) power.
- Near the PC you will connect it to. Make sure you can reach the machine easily.

1.3 Laser Safety Information

Laser radiation could be hazardous to the human body. For this reason, laser radiation emitted inside this product is hermetically sealed within the protective housing and external cover. No radiation can leak from the product in the normal operation of the product by the user.

This product is classified as a Class 1 Laser Product under IEC 60825-1:1993 and EN 60825-1:1994.

■ 200-240V Model

The label shown below is attached to the laser scanner assembly within the product.

	DANGER - Invisible laser radiation when open, AVOID DIRECT EXPOSURE TO BEAM.
	CAUTION - CLASS 3B, INVISIBLE LASER RADIATION WHEN OPEN, AVOID EXPOSURE TO THE BEAM.
ATTENTION	- RAYONNEMENT LASER INVISIBLE DE CLASSE 3B, EN CAS D'OUVERTURE ÉVITEZ L'EXPOSITION AU FAISCEAU.
VORSICHT	- UNSICHTBARE LASERSTRAHLUNG KLASSE 3B, WENN ABDECKUNG GEOFFNET, NICHT DEM STRAHL AUSSETZEN.
PRECAUCIÓN	- RADIACIÓN LASER INVISIBLE DE CLASE 3B PRESENTE AL ABRIR, EVITE LA EXPOSICIÓN AL HAZ.
VARNING	- KLASS 3B OSYNLIG LASERSTRÅLNING NÄR DENNA DEL ÄR ÖPPNAD, STRÅLEN ÄR FARLIG.
VAROITUS	- LUOKAN 3B NÄKYMÄTTÖMÄLLE LASER-SÄTEILYÄ AVATTUNA, VALTÄ ALTISTUMISTA SÄTEELLE.
주의	- 열리면 등급 3B 비가시 레이저 방사선이 방출됩니다. 광선에 노출을 피하십시오.
注意	- ここを開くとクラス3B不可視レーザー放射が出ます。 ビームに身をさらさないこと。
	RU5-8126

This product has been classified under IEC60825-1:1993 and EN60825-1:1994, and conforms to the following classes:

CLASS 1 LASER PRODUCT

LASER KLASSE 1

APPAREIL A RAYONNEMENT LASER DE CLASSE 1

APPARECCHIO LASER DI CLASSE 1

PRODUCTO LASER DE CLASE 1

APARELHO A LASER DE CLASSE 1



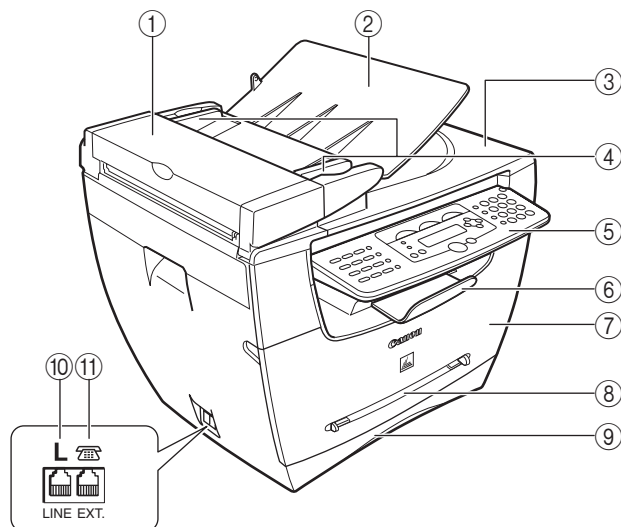
PERFORMANCE OF PROCEDURES OTHER THAN THOSE SPECIFIED IN THE MANUALS FOR THIS PRODUCT MAY RESULT IN HAZARDOUS RADIATION EXPOSURE.

1.4 Customer Support

If you encounter a problem with the machine's operation, try to solve it by referring to the *User's Guide*. If you cannot solve the problem or if you think your machine needs servicing, contact your local authorized Canon dealer or the Canon help line.

2 Operation

2.1 Components



① Automatic Document Feeder (ADF)

② Document feeder tray

③ Document output tray

④ Document guides

⑤ Operation panel

⑥ Output tray

⑦ Front cover

⑧ Multi-purpose feeder

⑨ Cassette

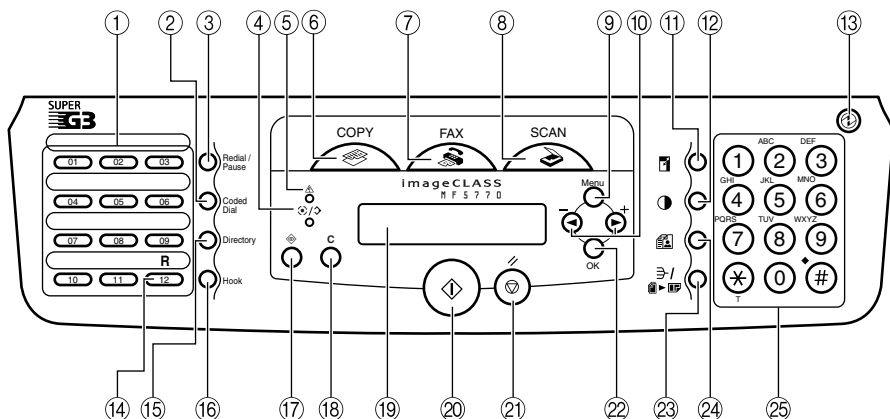
⑩ Telephone line jack (Only for the MF5750/MF5770 models.)

⑪ External device jack
Connect an external device.(Only for the MF5750/MF5770 models.)

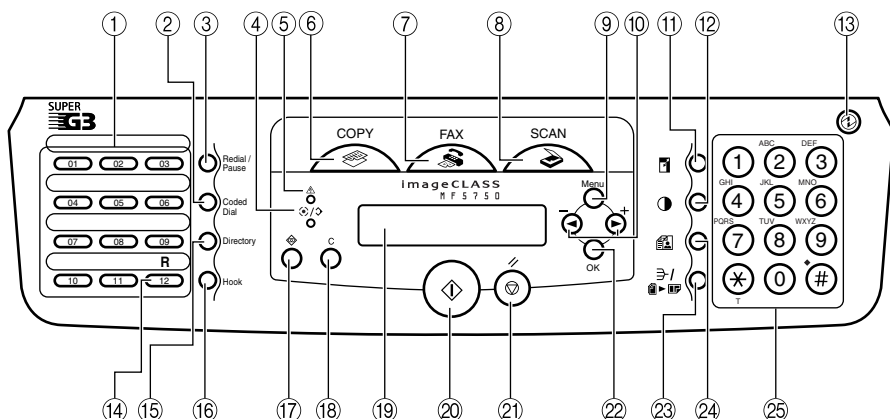
* The model imageCLASS MF5750 is used for illustration purposes in this manual.

2.2 Operation Panel

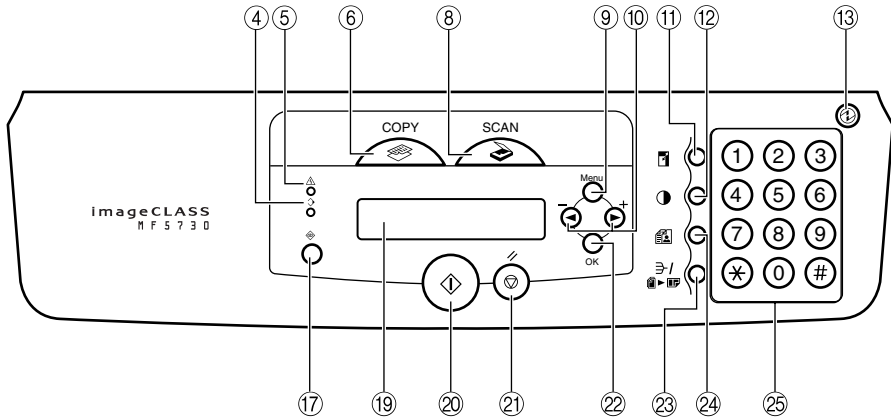
■ 2.2.1 MF5770



■ 2.2.2 MF5750



■ 2.2.3 MF5730



- | | |
|--------------------------------|----------------------|
| ① One-Touch Speed Dialing keys | ⑭ R key |
| ② Coded Dial key | ⑮ Directory key |
| ③ Redial/Pause key | ⑯ Hook key |
| ④ In Use/Memory indicator | ⑰ Status Monitor key |
| ⑤ Alarm indicator | ⑱ Clear key |
| ⑥ COPY key | ⑲ LCD |
| ⑦ FAX key | ⑳ Start key |
| ⑧ SCAN key | ㉑ Stop/Reset key |
| ⑨ Menu key | ㉒ OK key |
| ⑩ [◀(-)] and [▶(+)] keys | ㉓ Collate/2on1 key |
| ⑪ Enlarge/Reduce key | ㉔ Image Quality key |
| ⑫ Exposure key | ㉕ Numeric keys |
| ⑬ Energy Saver key | |

2.3 Enter Characters

- Use numeric keys to enter characters. Press the numeric key repeatedly until the required character appears.
- Press **[#]** to enter symbols.
- Press **[✕]** to switch between input modes:
 - Uppercase letter mode (:A)
 - Lowercase letter mode (:a)
 - Number mode (:1)

	:A	:a	:1
[1]	@.-_ /	@.-_ /	1
[2]	ABC	abc	2
[3]	DEF	def	3
[4]	GHI	ghi	4
[5]	JKL	jkl	5
[6]	MNO	mno	6
[7]	PQRS	pqrs	7
[8]	TUV	tuv	8
[9]	WXYZ	wxyz	9
[0]			0
[✕]	↶ :A → :a → :1 ↷		
[#]	- . * # ! " , ; : ^ ` _ = / ' ? \$ @ % & + \ ~ () [] { } < >		

- Press **[◀(-)]** or **[▶(+)]** to move the cursor.
- Press **[◀(-)]** or **[Clear]** to delete a previous character. Hold **[Clear]** to delete the entire entry.
- Press **[OK]** to confirm the entry.

3 Main Functions

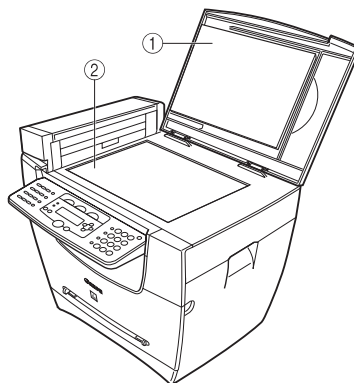
3.1 Set Paper Size

- 1** Press [Menu].
- 2** Press [◀(-)] or [▶(+)] to select <1.PAPER SETTINGS> → [OK].
- 3** Press [◀(-)] or [▶(+)] to select <1.CASSETTE> → [OK].
- 4** Press [◀(-)] or [▶(+)] to select <1.PAPER SIZE> → [OK].
- 5** Press [◀(-)] or [▶(+)] to select the paper size → [OK].
- 6** Press [Stop/Reset] to return to the standby display.

3.2 Load the Document

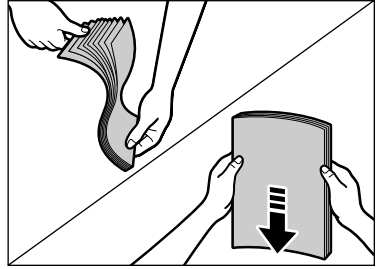
■ 3.2.1 Platen Glass

- 1** Open the platen glass cover ①.
- 2** Place your document face down on the platen glass ②.
- 3** Align the document with the paper size marks or center arrow on the left side of the platen glass.
- 4** Gently close the platen glass cover.

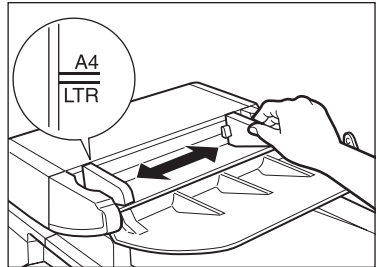


■ 3.2.2 ADF

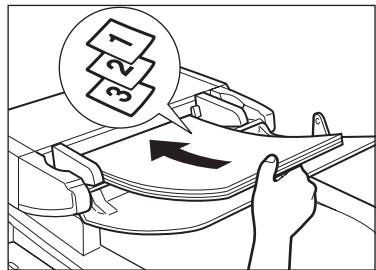
- 1 Fan and tap the edges of the multi-page document.



- 2 Adjust the document guides to the width of the document.



- 3 Load the document face up in the ADF.



NOTE

See *User's Guide* for document requirements and proper positioning.

3.3 Copy

- 1** Place the document on the platen glass or load it in the ADF. See 3.2, "Load the Document."
- 2** Press **[COPY]**.
- 3** Use the numeric keys to enter the required number of copies.
- 4** Adjust settings if required (see below):
 - Resolution
 - Density
 - Copy ratio (enlarge/reduce)
- 5** Press **[Start]**.



NOTE

*Press **[Stop/Reset]** to cancel copying.*

■ 3.3.1 Resolution

- 1** Press **[Image Quality]** to select the required image quality:
 - **<TEXT>** for text-only documents
 - **<PHOTO>** for photographs
 - **<TEXT/PHOTO>** for documents with text and photographs

■ 3.3.2 Density

Automatically:

- 1** Press **[Exposure]** to select the auto mode → press **[OK]**.

Manually:

- 1** Press **[Exposure]** to select the manual mode.
- 2** Press **[◀(-)]** (lighter) or **[▶(+)]** (darker) to adjust the copy exposure → press **[OK]**.

■ 3.3.3 Copy Ratio (Enlarge/Reduce)

- 1** Press **[Enlarge/Reduce]** → **[◀(-)]** or **[▶(+)]** to select a copy ratio.
- 2** Press **[OK]**.



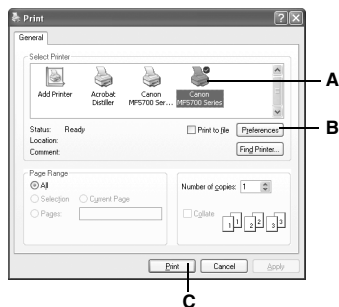
NOTE

You can also set a custom copy ratio selectable in 1% increments. For details, see User's Guide.

3.4 Print

Follow these steps to print from a PC running Windows XP. For other OS, see *Software Guide*.

- 1 Open an application on your PC.
- 2 Select **[Print]** from the **[File]** menu.
- 3 Select the icon (A) for the printer you want to use.
- 4 Click **[Preferences]** (B) to change print settings if required. See *Software Guide* for details.
- 5 Click **[Print]** (C).



To cancel printing:

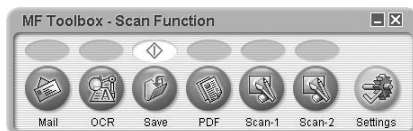
- 1 Click **[Start]** on the Windows task bar.
- 2 Select **[Control Panel]** → **[Printers and Other Hardware]** → **[Printers and Faxes]**.
- 3 Double-click the corresponding printer driver icon.
- 4 Right-click the print job → click **[Cancel Printing]**.

3.5 Scan

Follow these steps to scan a document using the **[SCAN]** key on the machine. To scan from MF Toolbox or a PC application, see *Software Guide*.

- 1 Place the document on the platen glass or load it in the ADF. See 3.2, “Load the Document.”
- 2 Press **[SCAN]** → **[Start]** on the machine to start scanning.

The **[MF Toolbox - Scan Function]** screen appears. For details on scan settings, see *Software Guide*.



4 Maintenance

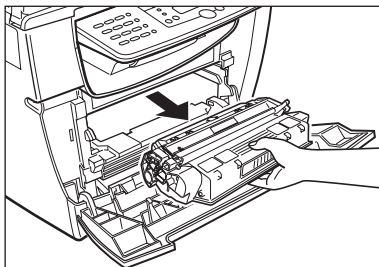
4.1 Replace Cartridge



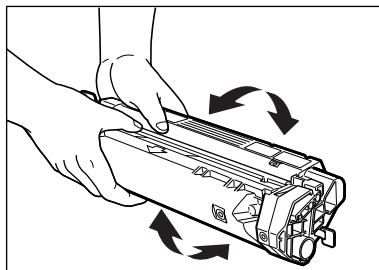
NOTE

If toner comes into contact with your skin or clothing, wash immediately with cold water. Warm water will permanently set the toner.

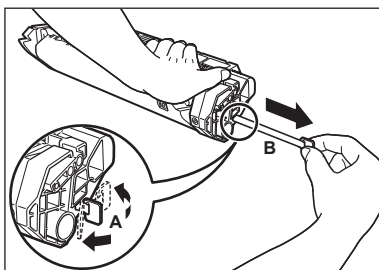
- 1** Open the front cover.
- 2** Pull out the old cartridge horizontally.



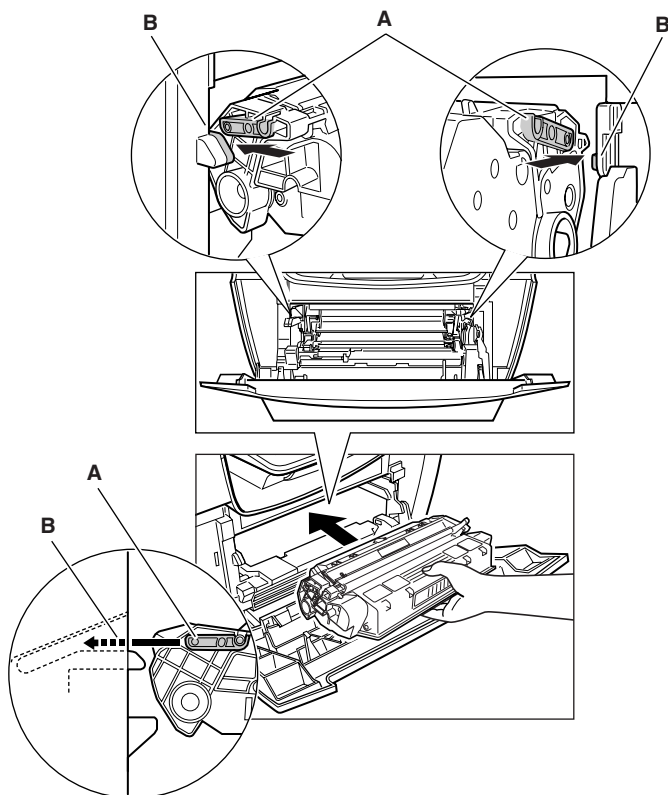
- 3** Remove the new cartridge from the bag. Keep the bag for future use.
- 4** Rock the cartridge several times to distribute toner evenly.



- 5** Hold the cartridge. Break the tab (A) and pull out the seal (B) completely.



- 6** Hold the cartridge and align the projections (A) on the both sides of the cartridge to the guides (B) in the machine, then gently slide the cartridge into the machine as far as it will go.



- 7** Close the front cover.

5 Troubleshooting

5.1 Remove Jammed Paper

■ 5.1.1 Inside Machine



CAUTION

Some areas inside the machine are high in temperature and voltage. Take precaution to avoid burns or electrical shock.

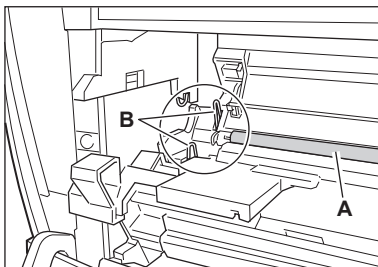
1

Open the front cover and pull out the cartridge horizontally.

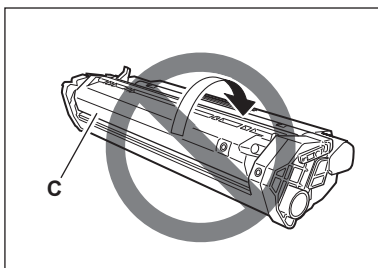


IMPORTANT

- Remove metal items (watches and rings) when touching inside the machine.
- Do not touch the transfer roller (A) or pins (B) when removing jammed paper.

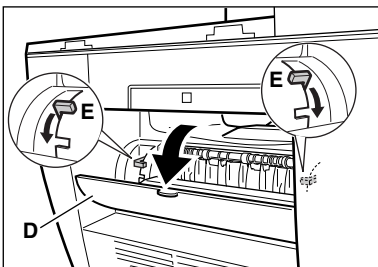


- Do not open the drum protective shutter (C) or touch the drum inside.

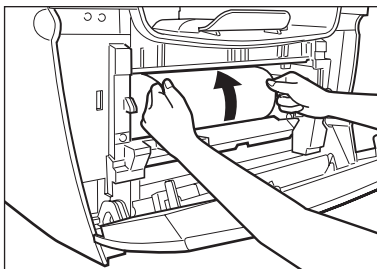


2

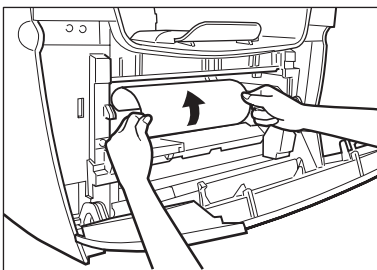
Open the face up cover (D) and push down the green levers (E) on both sides.



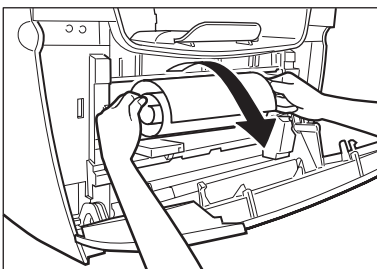
- 3** Hold both sides of paper and carefully pull the bottom edge of paper out of the machine.



- 4** Pull out the paper from the machine.

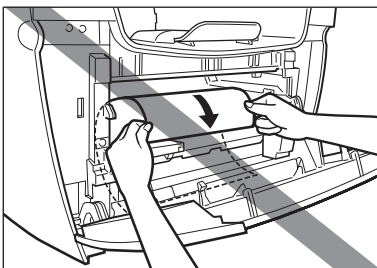


- 5** If the paper has not entered imaging area, pull it forward and roll it inward.

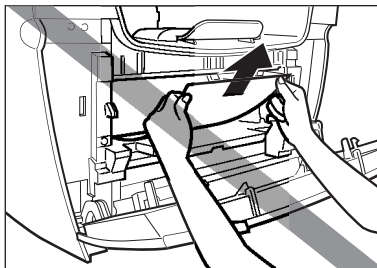


IMPORTANT

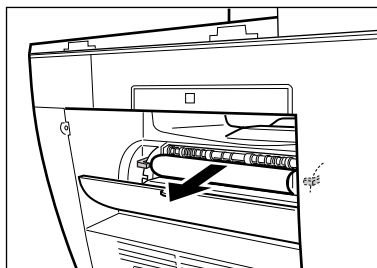
- *To avoid machine malfunction, do not pull the jammed paper outward from the cassette.*



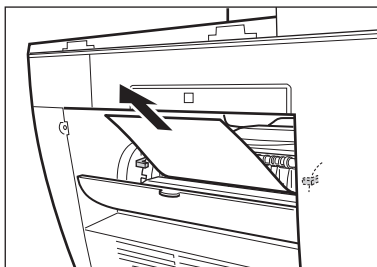
- To avoid toner staining the machine permanently, do not pull the jammed paper upward.



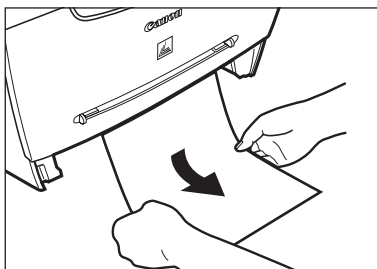
- 6** Gently pull jammed paper between output rollers until the leading edge appears.



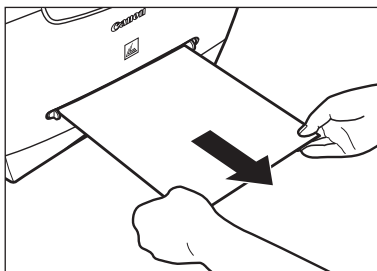
- 7** Carefully pull out the jammed paper.



- 8** For paper jammed in the paper cassette, pull out the cassette first. Pull down the paper out of the machine.



- 9** For paper jammed in the multi-purpose feeder, hold both sides and pull it out.



- 10** Push up the green levers and close the face up cover on the back of the machine.



IMPORTANT

To avoid damage to the fixing assembly, never push down the green levers while printing.

- 11** Insert the cartridge in the machine and close the front cover.

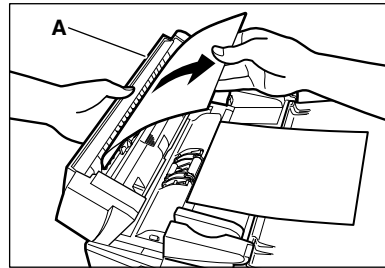
■ 5.1.2 ADF



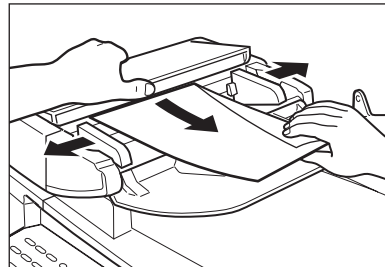
NOTE

To avoid damage to the document, do not open the platen glass cover until the jammed paper is removed.

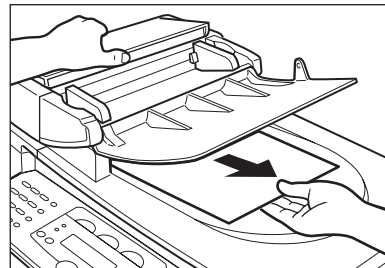
- 1** Open the ADF (A) and remove jammed paper.



- 2** Widen the document guides. Open the ADF and remove jammed paper.



- 3** Open the ADF and remove jammed paper from the document output tray.



Memo



CANON INC.

30-2, Shimomaruko 3-chome, Ohta-ku, Tokyo 146-8501, Japan

CANON U.S.A., INC.

One Canon Plaza, Lake Success, NY 11042, U.S.A.

CANON CANADA INC.

6390 Dixie Road Mississauga, Ontario L5T 1P7, Canada

CANON EUROPA N.V.

Bovenkerkerweg 59-61 1185 XB Amstelveen, The Netherlands

CANON FRANCE S.A.S.

17, quai du Président Paul Doumer 92414 Courbevoie Cedex, France

CANON COMMUNICATION & IMAGE FRANCE S.A.S.

12, rue de l'Industrie 92414 Courbevoie Cedex, France

CANON (U.K.) LTD.

Woodhatch, Reigate, Surrey, RH2 8BF, United Kingdom

CANON DEUTSCHLAND GmbH

Europark Fichtenhain A10, 47807 Krefeld, Germany

CANON ITALIA S.p.A.

Via Milano, 8 20097 San Donato Milanese (MI) Italy

CANON LATIN AMERICA, INC.

703 Waterford Way Suite 400, Miami, Florida 33126 U.S.A.

CANON AUSTRALIA PTY. LTD

1 Thomas Holt Drive, North Ryde, Sydney, N.S.W. 2113, Australia

CANON CHINA CO., LTD

15F, North Tower, Beijing Kerry Centre, 1 Guang Hua Road, Chao Yang District,
100020, Beijing, China

CANON SINGAPORE PTE. LTD.

1 HarbourFront Avenue #04-01 Keppel Bay Tower, Singapore 098632

230V