

Set-Up Sheet

Canon

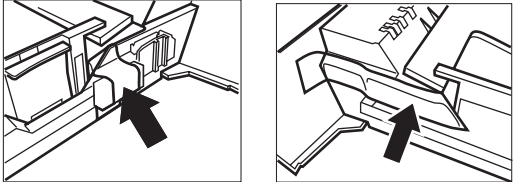
imageCLASS MF 5730 / MF 5750

Thank you for purchasing the Canon imageCLASS MF5730/MF5750. Follow the instructions in this document first to set up the machine.

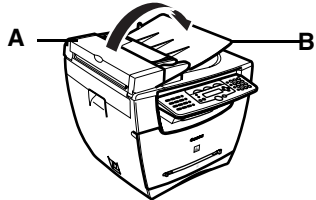
- The model imageCLASS MF5750 is used for illustration purposes on this sheet.

1 Unpack machine

1. Carefully remove the machine from the box and place it on a flat surface.
2. Remove all shipping tape from the machine. Referring to the following figure, remove the tape and spacers on both sides of the cassette housed in the machine.

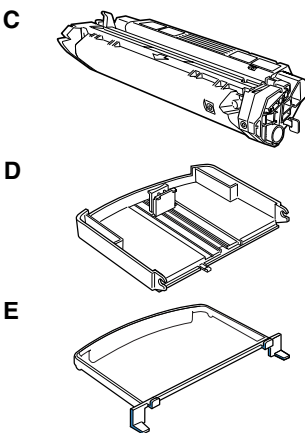


3. Hold the document feeder (A) with one hand, and open the document feeder tray (B) with the other.



4. Check that you have these items:

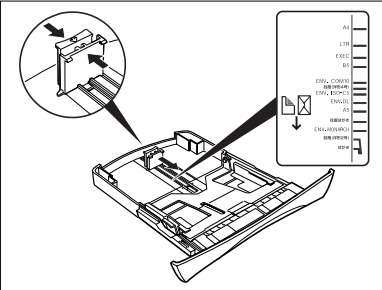
- Cartridge (C)
- Cassette extension (D)
- Extension cover (E)
- Power cord
- USB cable
- Telephone cable (MF 5750 only)
- Destination labels (MF 5750 only)
- Quick Reference Guide
- Facsimile Guide (MF 5750 only)
- User Software CD-ROM



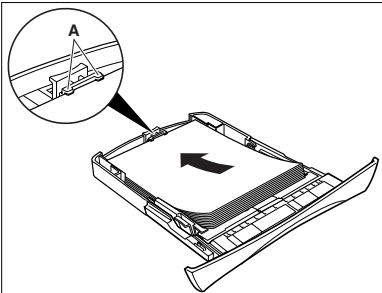
- NOTE**
- Items can vary depending on the country of purchase.

5 Load paper

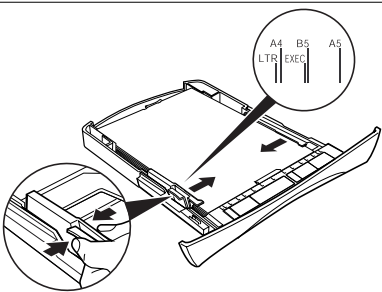
1. Pull out the paper cassette from the machine.
2. Adjust the rear paper end guide to match the paper size.



3. Load paper into the cassette. Make sure the paper stack sits below the hooks (A).

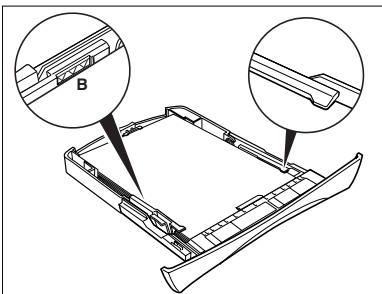


4. Adjust the side paper end guides to match the paper size.



- NOTE**
- If the rear and side paper end guides are not properly adjusted to the paper size, the machine may not deliver printouts.

5. Even out the edges of the paper stack. Make sure the height of the paper stack does not exceed the limit marks (B).

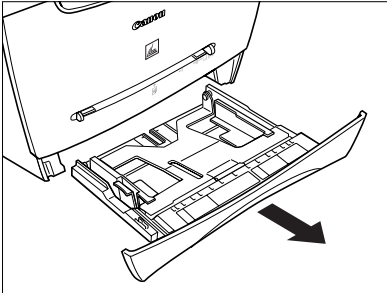


6. Insert the paper cassette into the machine as far as it will go.

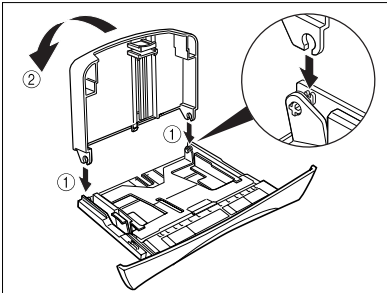
- NOTE**
- If the cassette is not fully inserted into the machine, paper jams may occur.
 - Make sure the correct paper size is specified in the <1.PAPER SETTINGS> menu. See "3.1 Set Paper Size" in the *Quick Reference Guide*.

2 Install paper cassette

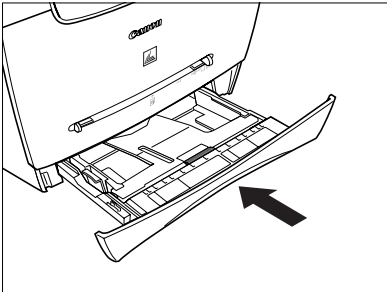
1. Pull out the paper cassette.



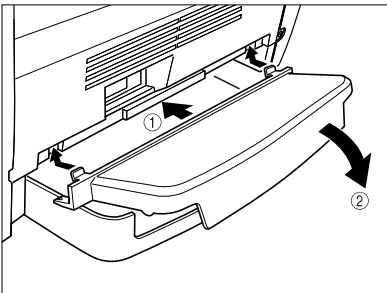
2. Attach the cassette extension to the cassette.



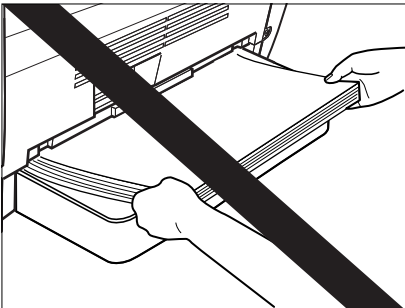
3. Insert the cassette back into the machine.
IMPORTANT
 - Do not push in the cassette at an angle. Doing so may damage the paper sensing lever inside the machine.



4. Attach the extension cover on the back of the machine.

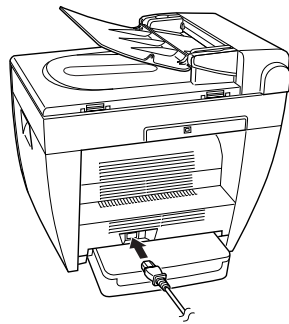


- IMPORTANT**
- Do not load paper from the back of the machine. Doing so may damage the paper feeding assembly inside the machine.

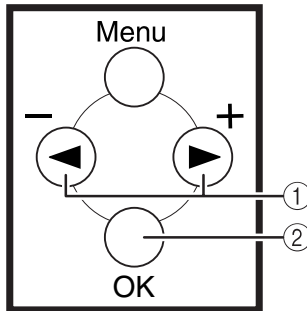


6 Connect power cord

1. Connect the power cord into the rear socket and the wall outlet.



2. If the message <DISPLAY LANGUAGE> appears, press ◀ or ▶ ① to select the desired language for the LCD. Press [OK] ②.

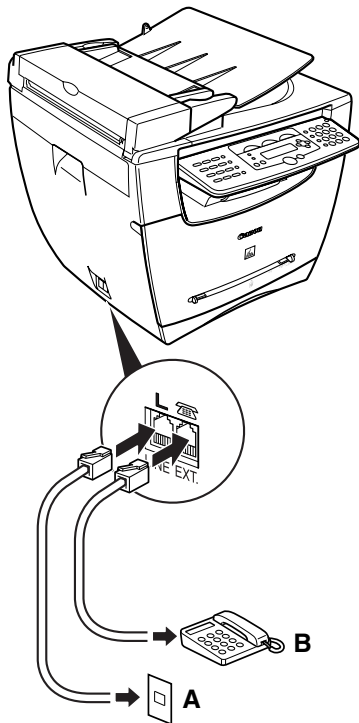


- IMPORTANT**
- For important safety instructions on installation and handling of the machine, see "Safety Instructions" in the *Quick Reference Guide*.

3 Connect telephone cable

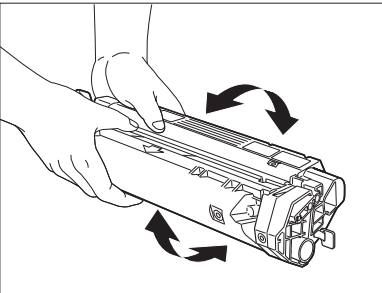
For MF 5750 only:

1. Connect the telephone line to **L** (LINE). Connect the other end to the wall jack (A).
2. Optional: Connect a telephone (B) or an answering machine to **EXT.** (EXT.).

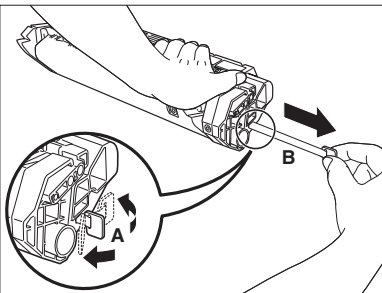


4 Install cartridge

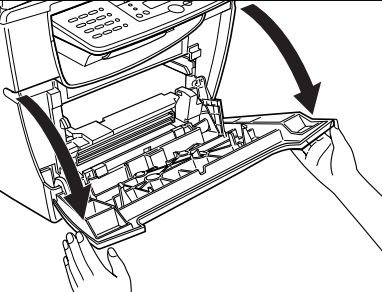
1. Remove the cartridge from the bag. Keep the bag for future use.
2. Rock the cartridge several times to distribute toner evenly.



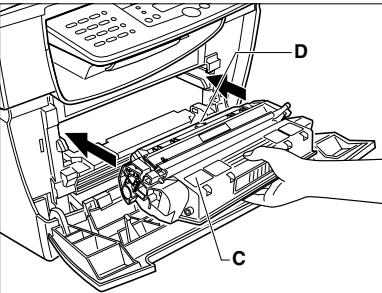
3. Hold the cartridge. Break the tab (A) and pull out the seal (B) completely.



4. Open the front cover.



5. Hold the cartridge with instructions (C) face up and arrow (D) pointing to the machine. Insert the cartridge as far as it will go.



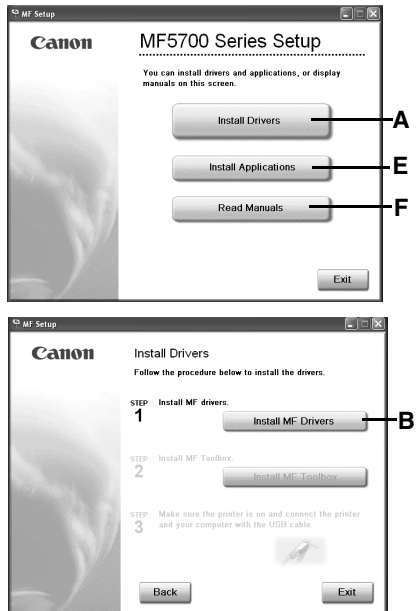
6. Close the front cover completely.

7 Install software

- IMPORTANT**
- Do not connect the USB cable before installing the software. If you connect the USB cable before installing the software and the Found New Hardware Wizard screen appears, click **[Cancel]** and disconnect the USB cable.

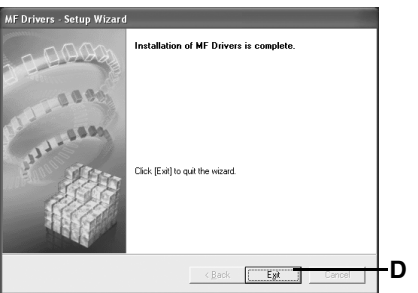
- NOTE**
- For Windows 2000/XP, log on as Administrator to install the software.

1. Turn on your computer.
2. Quit any open applications, including virus checking software.
3. Insert the User Software CD into the CD-ROM drive.
4. When the MF Setup screen appears, click **[Install Drivers]** (A).
- If the MF Setup screen is not displayed, on the Windows desktop, click **My Computer**. Open the CD-ROM icon, then double-click **setup (setup.exe)**.
5. Click **[Install MF Drivers]** (B) on the Install Drivers screen.



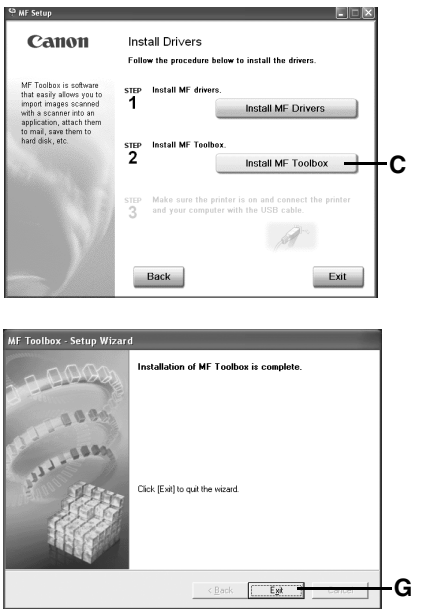
STEP 1 Install MF Drivers:

1. When the MF Drivers-Setup Wizard screen appears, follow the instructions on the screen.
2. When the installation is complete, click **[Exit]** (D) to close the MF Drivers-Setup Wizard screen.



STEP 2 Install MF Toolbox:

1. On the Install Drivers screen, click **[Install MF Toolbox]** (C).
2. When the MF Toolbox Setup screen appears, follow the instructions on the screen.
3. When the installation is complete, click **[Exit]** (G) to close the MF Toolbox Setup screen.

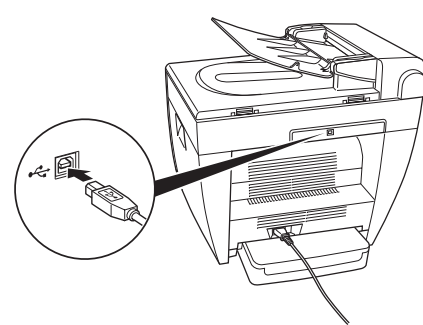


- NOTE**
- To install accompanying applications, click **[Install Applications]** (E) on the MF5700 Series Setup screen.
 - To read manuals in the User Software CD, click **[Read Manuals]** (F) on the MF5700 Series Setup screen.

8 Connect USB cable

- NOTE**
- Use of a cable 3 m long or less is recommended.

1. Make sure the machine's power is turned on, and connect the cable to the USB port on the back of the machine. Then connect the other end of the cable to the USB port on your computer.
2. Click **[Exit]** to close the MF Setup screen. Remove the User Software CD from the CD-ROM drive and store it in a safe place.



You have now completed machine setup.