



Manuals for the Machine

The manuals for this machine are divided as follows. Please refer to them for detailed information.
Depending on the system configuration and product purchased, some manuals may not be needed.



Guides with this symbol are printed manuals.



Guides with this symbol are PDF manuals included on the accompanying CD-ROM.

- **Setting Up the Machine**
- **Software Installation**

Set-Up Sheet



- **Introduction on Use**

Quick Reference Guide



- **Copying and Printing Instructions**
- **Troubleshooting**

User's Guide



- **Software Installation and Instructions**
- **Printing and Scanning Instructions**
- **Troubleshooting**

Software Guide (This Manual)



Model Name

- F146600 (MF3110)

-
- To view the manual in PDF format, Adobe Reader/Adobe Acrobat Reader is required. If Adobe Reader/Adobe Acrobat Reader is not installed on your system, please download it from the Adobe Systems Incorporated website.
 - Considerable effort has been made to ensure that this manual is free of inaccuracies and omissions. However, as we are constantly improving our products, if you need an exact specification, please contact Canon.

Contents

Preface	iv
How to Use This Manual	iv
Symbols Used in This Manual	iv
Buttons Used in This Manual	iv
Displays Used in This Manual	iv
Abbreviations Used in This Manual	iv
Legal Notices	v
Trademarks	v
Copyright	v
Notice	v

Chapter 1 Installation

System Requirements	1-1
Where to Find Help	1-2
Installing Software on Your Computer	1-2
Step 1 Install the MF Drivers	1-4
Step 2 Install the MF Toolbox	1-4
Step 3 Connect the USB Cable	1-7
Install Accompanying Applications	1-7
Read User's Manual	1-7
Checking Installation	1-7
Uninstalling and Reinstalling the Software	1-8
Removing the MF Toolbox	1-8
Removing the MF Drivers	1-8

Chapter 2 Printing

Printing a Document	2-1
Canceling Printing	2-2
Changing Print Settings	2-2
From a Windows Application	2-3
From the [Printers and Faxes] (Windows 98/Me/2000: [Printers]) Folder	2-3
Windows 98/Me Properties	2-4
Windows 2000/XP Properties and Printing Preferences	2-22
Properties	2-23
Printing Preferences	2-32
Using the Machine on Your Network	2-47
Setting the Machine as a Shared Printer	2-47
Using the Shared Printer on Your Network	2-54

Chapter 3 Scanning

Scanning with [Start] on the Machine	3-1
Setting the Scanning Function for [Start]	3-1
Setting Up [Start] to Operate in a Different Way from [Save]	3-1
Setting Up [Start] in the [Settings] Dialog Box	3-2
Setting Up [Start] in the [Scanners and Cameras] Folder (Windows2000: the [Scanners and Cameras Properties] Dialog Box)	3-3

Scanning with the MF Toolbox	3-5
MF Toolbox Settings	3-8
Scanner Settings	3-8
Save Scanned Image	3-9
Link Scanned Images to	3-10
Confirmation of the Scanned Image and Exif Settings (Confirm Scanned Image)	3-11
Scanning an Image from an Application	3-12
Creating One PDF File from Two or more Pages	3-12
Setting Preferences and Scanning with ScanGear MF	3-14
Switching between Simple Mode and Advanced Mode	3-15
Using Simple Mode	3-15
Using Advanced Mode	3-18
Advanced Mode - Specifying the Parameters of a Scan	3-20
Advanced Mode Settings	3-21
Determining Resolution	3-37
Scanning with the WIA Driver (Windows XP Only)	3-38
Scanning from the [Scanner and Camera Wizard] Dialog Box	3-38
Scanning from an Application	3-43

Chapter 4 **Troubleshooting**

Printer Problems	4-1
Driver Problems	4-3
Scanning Problems	4-5
Installing and Uninstalling Problems	4-9

Chapter 5 **Appendix**

Printer Specifications	5-1
Hardware	5-1
Software	5-1
Glossary	5-1
Index	5-10

Preface

Thank you for purchasing the MF3110. Please read this manual thoroughly before operating the product in order to familiarize yourself with its capabilities, and to make the most of its many functions. After reading this manual, store it in a safe place for future reference.

How to Use This Manual

Symbols Used in This Manual

The following symbols are used in this manual to explain procedures, restrictions, handling precautions, and instructions that should be observed for safety.



IMPORTANT

Indicates operational requirements and restrictions. Be sure to read these items carefully in order to operate the machine correctly, and to avoid damage to the machine.



NOTE

Indicates a clarification of an operation, or contains additional explanations for a procedure. Reading these notes is highly recommended.

See the *User's Guide*

Refer to the User's Guide for details on the topic of the previous sentence.

machine


The word "machine" refers to MF3110 machine.

default

A setting that remains in effect unless you change it.

Buttons Used in This Manual

A button or an item is referred to in [brackets] as follows in this manual.

- A button or an item on the screen [OK]
- Name of window or dialog box [Add Printer Wizard]
- A button on a toolbar  (Help)

Displays Used in This Manual

Screen shots of computer operation screens used in this manual may differ from the ones you actually see depending on the model or options that come with your machine.

Abbreviations Used in This Manual

In this manual, product names and model names are abbreviated as follows:

Microsoft® Windows® 98 operating system is referred to as Windows 98.

Microsoft® Windows® Millennium Edition operating system is referred to as Windows Me.

Microsoft® Windows® 2000 operating system is referred to as Windows 2000.

Microsoft® Windows® XP operating system is referred to as Windows XP.

Legal Notices

Trademarks

Canon and the Canon Logo are trademarks of Canon Inc.

Microsoft and Windows are either registered trademarks or trademarks of Microsoft Corporation in the United States and/or in other countries.

Other brand and product names are trademarks or registered trademarks of their respective companies.

In this manual, Microsoft and Microsoft Windows are referred to as Microsoft and Windows respectively.

Copyright

Copyright © 2004 by Canon Inc. All rights reserved.

No part of this publication may be reproduced, transmitted, transcribed, stored in a retrieval system, or translated into any language or computer language, in any form or by any means, electronic, mechanical, magnetic, optical, chemical, manual, or otherwise, without the prior written permission of Canon Inc.

Notice

The information in this manual is subject to change without notice.

CANON INC. MAKES NO WARRANTY OF ANY KIND WITH REGARD TO THIS MATERIAL, EITHER EXPRESS OR IMPLIED, EXCEPT AS PROVIDED HEREIN, INCLUDING WITHOUT LIMITATION, THEREOF, WARRANTIES AS TO MARKETABILITY, MERCHANTABILITY, FITNESS FOR A PARTICULAR PURPOSE OF USE OR AGAINST INFRINGEMENT OF ANY PATENT. CANON INC. SHALL NOT BE LIABLE FOR ANY DIRECT, INCIDENTAL, OR CONSEQUENTIAL DAMAGES OF ANY NATURE, OR LOSSES OR EXPENSES RESULTING FROM THE USE OF THIS MATERIAL.

Installation

This chapter explains the procedure to install the drivers and software on your computer. Once the corresponding drivers are installed, you can print and scan from your computer.

System Requirements

The drivers can be installed and used in the following system environments.

■ Operating System

Windows 98, Windows Me, Windows 2000 Professional, Windows XP

■ Computer

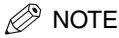
Any computer on which Windows 98, Windows Me, Windows 2000, or Windows XP runs properly.

■ Hardware Environment

- IBM or IBM-compatible PC
- CD-ROM drive or network environment with the access to CD-ROM
- PC equipped with a USB port and the USB class driver installed

OS	CPU	RAM	Available free disk space
Windows 98	Intel Pentium® 90 MHz or greater	32 MB of RAM, 64 MB or greater is recommended	At least 115 MB, 200 MB or greater is recommended
Windows Me	Intel Pentium® 150 MHz or greater	32 MB of RAM, 64 MB or greater is recommended	At least 115 MB, 200 MB or greater is recommended
Windows 2000* Professional	Intel Pentium® 133 MHz or greater, or compatible micro processors (up to 2 processors are supported)	64 MB of RAM, 128 MB or greater is recommended	At least 115 MB, 200 MB or greater is recommended
Windows XP*	Pentium Family® 300 MHz or greater	64 MB of RAM, 128 MB or greater is recommended	At least 115 MB, 200 MB or greater is recommended

* Log on as a user account with administrator privileges is recommended.

**NOTE**

The USB 2.0 connection requires a PC equipped with a CPU faster than 300 MHz and more than 64 MB of RAM and with Windows XP SP1 installed, or with a CPU faster than 133 MHz and more than 64 MB of RAM and with Windows 2000 SP4 installed. If your PC meets all of these requirements and is preinstalled with USB 2.0 Host Controller, the USB 2.0 connection will be guaranteed.

Where to Find Help

When you encounter a problem during installation of the driver software or while operating your machine, consult the following:

■ In This Manual

See Chapter 4, "Troubleshooting."

■ In the User's Guide

See Chapter 9, "Troubleshooting."

■ README.TXT File


The hints, limitations, and restrictions you need to be aware of when installing and using the drivers are included in the README.TXT file provided with the drivers.

■ Online Help

You can locate additional help in the online Help file provided with the driver software. In the [Properties] dialog box, you can click [Help] to display information about every feature and option in the drivers.

■ Context Sensitive Help

This Help displays the explanation of each item in the current dialog box. Use one of the following procedures to activate a context sensitive help.

- Click  (Help) in the title bar of the dialog box → click the desired item.
- Right-click the desired item → select [What's this?].
- Select the desired item → press [F1].

■ Canon Authorized Dealers or Service Providers

If the Help does not provide the information you need, contact your Canon authorized dealer or Canon authorized service provider.

Installing Software on Your Computer

This section provides installation procedure of drivers to use the Canon MF3110 as a local printer and scanner (connected directly to your computer).

When installing the drivers, follow the steps shown in the [MF3110 Setup] screen.

Before you install the software, be sure to:

- Confirm the machine is not connected to your computer.
- Turn on the machine. (See the *Set-Up Sheet*.)
- Quit any Windows application running on your computer.



IMPORTANT

If you are using Windows 2000/XP, be sure to log on as a member of Administrators. The full control access right is necessary for the installation of the drivers.



NOTE

- Use of a cable 3 m long or less is recommended.
- The screen shots shown are from Windows XP.

1

Insert the CD-ROM into your CD-ROM drive.

The [MF3110 Setup] screen appears.

Install the software following steps 1, 2 and 3 in the [MF3110 Setup] screen.



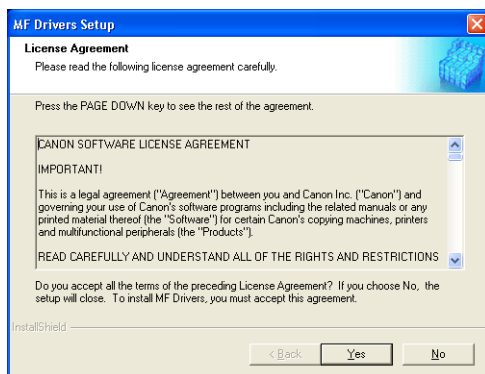
[MF3110 Setup] screen

If the [MF3110 Setup] screen is not displayed, on the Windows desktop, click [start] → [My Computer] (Windows 98/Me/2000: double-click [My Computer]). Open the CD-ROM icon → double-click [Setup(Setup.exe)].

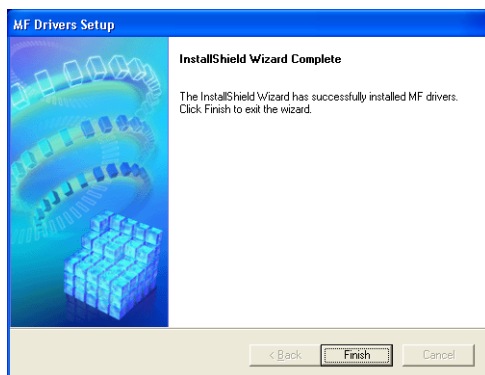
If you are installing from a copy saved on a network or hard disk, double-click [Setup(Setup.exe)] in the copy.

Step 1 Install the MF Drivers

- 1 In the [MF3110 Setup] screen, click [Install MF Drivers].
- 2 Read the License Agreement → click [Yes].



- 3 Follow the on-screen instructions to install the software.
- 4 Click [Finish].

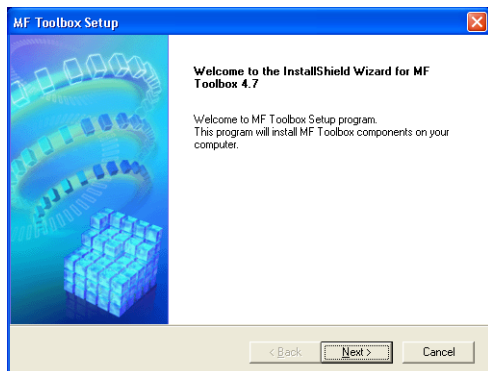
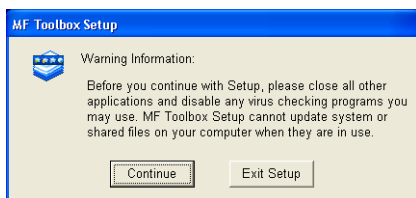
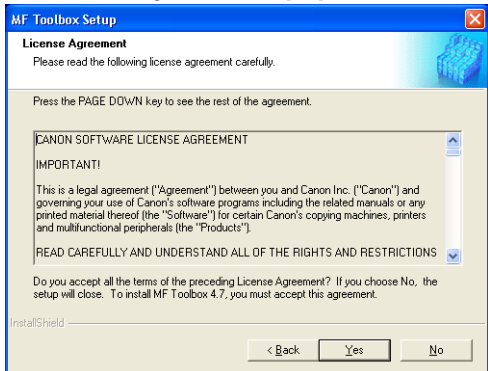


Step 2 Install the MF Toolbox

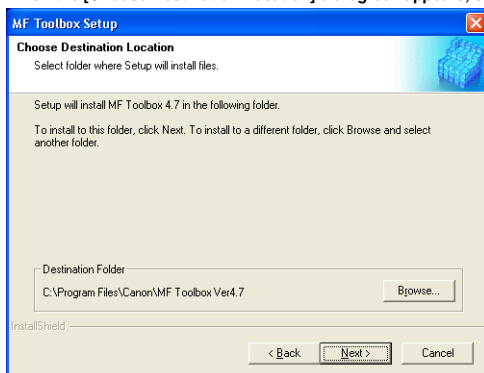
- 1 In the [MF3110 Setup] screen, click [Install MF Toolbox].

If you have closed the [MF3110 Setup] screen, on the Windows desktop, click [start] → [My Computer] (Windows 98/Me/2000: double-click [My Computer]). Open the CD-ROM icon → double-click [Setup(Setup.exe)].

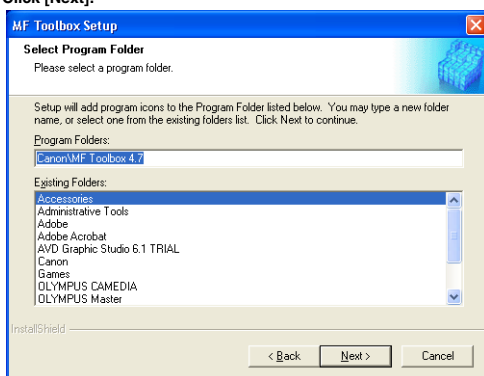
If you are installing from a copy saved on a network or hard disk, double-click [Setup(Setup.exe)] in the copy.

2 Click [Next].**3 Click [Continue].****4 Read the License Agreement → click [Yes].**

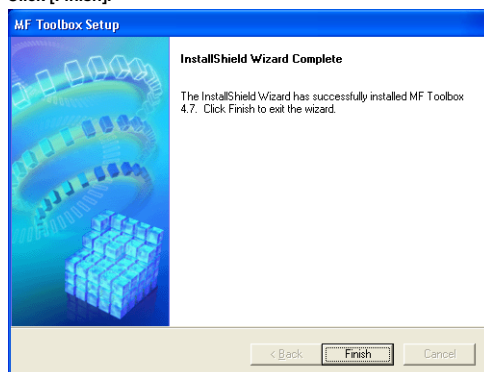
- 5 When the [Choose Destination Location] dialog box appears, click [Next].



- 6 Click [Next].



- 7 Click [Finish].



Step 3 Connect the USB Cable

- 1 Make sure that the machine is turned on.
- 2 Connect the USB cable to the machine and computer USB port.

When you connect the USB cable to the computer, the machine is automatically detected as a new hardware. Wait for a while as your computer performs various settings.

Depending on your computer, a message may display asking you to restart your computer.

After restarting your computer, wait for a while for your computer to continue performing various settings.

Install Accompanying Applications

To install the accompanying applications, in the [MF3110 Setup] screen, click [Install Applications].

You can also install it later.

Read User's Manual

To read the PDF manual on the CD-ROM, click [Read Manuals] on the [MF3110 Setup] screen.

Installation is now complete. In the [MF3110 Setup] screen, click [Exit] to close the screen. Then remove the CD-ROM from the disk drive.

Checking Installation

Check if the drivers are installed successfully and the machine is selected as the default printer.



NOTE

If your machine is selected in the printer box when you open the [Print] dialog box in an application, that means your machine is set as the default printer.

- 1 **Open the [Printers and Faxes] (Windows 98/Me/2000: [Printers]) folder.**
Click [start] on the Windows task bar → select [Printers and Faxes] (Windows 98/Me/2000: [Start] → [Settings] → [Printers]).
Make sure the driver icon is displayed.
- 2 **Select the default printer.**
If your machine is already set as the default printer, go to step 3.
☐ Click the corresponding printer driver icon.
☐ From the [File] menu, click [Set as Default Printer] (Windows 98/Me: [Set as Default]).
- 3 **Open the [Scanners and Cameras] folder (Windows 98/Me/2000: the [Scanners and Cameras Properties] dialog box).**
Click [start] on the Windows task bar → select [Control Panel] → [Printers and Other Hardware] → [Scanners and Cameras] (Windows 98/Me/2000: [Start] → [Settings] → [Control Panel] → double-click the [Scanners and Cameras] icon).
Make sure the corresponding scanner driver name or icon is displayed.
- 4 **If the [Canon MF Toolbox 4.7] icon is displayed on the Windows desktop, installation of the MF Toolbox 4.7 has been successful.**

Uninstalling and Reinstalling the Software

If the drivers are not working properly, remove the drivers and install them again. When removing the software, first remove the MF Toolbox, and then the MF drivers. Even if you want to reinstall the software, you must still remove the currently installed software. Before you remove the drivers, make sure the following:

- You have the installation software available for installation.
- No application is running on your computer.



IMPORTANT

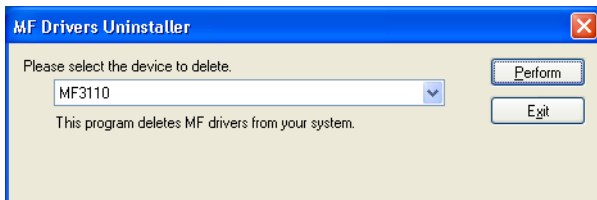
Uninstallation in Windows 2000/XP needs to be done by a user with administrator privileges.

Removing the MF Toolbox

- 1 Quit the MF Toolbox and any applications (including virus checkers) that are currently running.**
To close the MF Toolbox, click [X] at the top right of the MF Toolbox window.
- 2 Click [start] on the Windows task bar → [(All) Programs] → [Canon] → [MF Toolbox 4.7] → [Uninstall Toolbox].**
- 3 Follow the on-screen instructions.**
When the Repair or Remove program selection screen is displayed, check [Remove] → click [Next].
If asked to confirm removal of an application etc., click [OK].
Restart your computer if asked to do so.

Removing the MF Drivers

- 1 Click [start] on the Windows task bar → [(All) Programs] → [Canon] → [MF Drivers] → [Uninstall Drivers].**
The [MF Drivers Uninstaller] dialog box appears.
- 2 Select the corresponding printer → click [Perform].**



The confirmation message dialog box appears.

- 3 Click [Yes].**
In Windows 98/Me/2000, the dialog box asking you to restart your computer to complete the uninstallation process appears. Make sure [Yes, I want to restart my computer now.] is selected → click [Finish].
The uninstallation is complete.

This chapter explains the procedure to print a document from a Windows application. To change print settings, access the properties dialog box of the printer driver.

Printing a Document

1 Load paper in the cassette or the multi-purpose feeder.

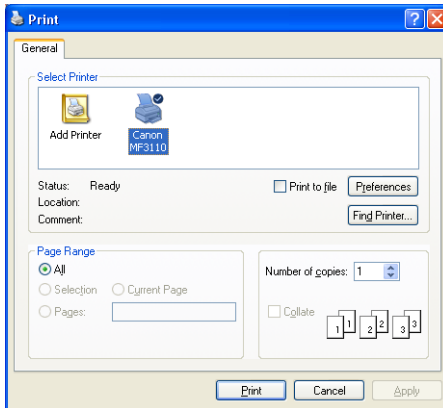
For details on loading paper, see Chapter 2, "Paper Handling," in the *User's Guide*.

2 Open the document in an application.

3 Select the command to print.

In most cases, click [Print] from the [File] menu.

The [Print] dialog box appears.



4 From the [Select Printer] list box or the [Name] pull-down list in the [Print] dialog box, select the printer to be used.

5 Click [Preferences] or [Properties].

NOTE

Depending on the application you are using, select the printer to be used in the [General] tab sheet in the [Print] dialog box, then specify the print settings in the corresponding tab sheet. (Only for Windows 2000.)

6 Specify the required settings → click [OK].

NOTE

For details, see "Changing Print Settings," on p. 2-2.

7 Click [Print] or [OK].

Printing starts.

NOTE

To cancel printing, click [Cancel].

Canceling Printing

1 Open the [Printers and Faxes] (Windows 98/Me/2000: [Printers]) folder.

Click [start] on the Windows task bar → select [Printers and Faxes] (Windows 98/Me/2000: [Start] → [Settings] → [Printers]).

2 Double-click the corresponding printer driver icon.

3 Right click the print job → click [Cancel Printing].

NOTE

You can also cancel a print job using [Status Monitor] on the operation panel of the machine. For details, see Chapter 7, "System Monitor," in the User's Guide.

Changing Print Settings

To view or change the print settings, access the properties or printing preferences dialog box of the printer driver.

You can access the properties dialog box either from the application's [Print] dialog box and the [Printers and Faxes] (Windows 98/Me/2000: [Printers]) folder, or the printing preferences dialog box from the [Printers and Faxes] (Windows 2000: [Printers]) folder.

To access the dialog box, follow the procedure below.

NOTE

- The properties dialog box enables you to set up the printer configuration and configure the print settings for all Windows applications. The printing preferences dialog box enables you to specify the default settings for the printing options available when you print with the MF3110. (Only for Windows 2000/XP)
- The number of tabs displayed in the properties dialog box will vary, depending on the type of operating system you are using and the method you use to access the dialog box.
- The method you use to access the dialog boxes determines how long the printing options remain in effect:
 - If you access the dialog box from an application's [Print] dialog box, your selected printing options apply only to the current print job. They will not be stored when you close the application.
 - If you access the dialog box from the [Printers and Faxes] (Windows 98/Me/2000: [Printers]) folder, selected printing options apply to all Windows applications and remain in effect until you change those settings.

From a Windows Application

■ Opening the Printing Preferences or Properties Dialog Box

- 1** **Select the command to print.**
In most cases, click [Print] from the [File] menu.
The [Print] dialog box appears.
- 2** **From the [Select Printer] list box or the [Name] pull-down list in the [Print] dialog box, select the printer to be used.**
- 3** **Click [Preferences] or [Properties].**
The [Printing Preferences] or [Canon MF3110 Properties] dialog box appears.

From the [Printers and Faxes] (Windows 98/Me/2000: [Printers]) Folder

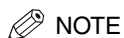
■ Opening the Properties Dialog Box

- 1** **Open the [Printers and Faxes] (Windows 98/Me/2000: [Printers]) folder.**
Click [start] on the Windows task bar → select [Printers and Faxes] (Windows 98/Me/2000: [Start] → [Settings] → [Printers]).
- 2** **Click the corresponding printer driver icon.**
- 3** **From the [File] menu, click [Properties].**
You can also open the properties dialog box by right-clicking the corresponding printer driver icon and selecting [Properties] from the pop-up menu.
The [Canon MF3110 Properties] dialog box appears.

■ Opening the Printing Preferences Dialog Box (Windows 2000/XP)

- 1** **Open the [Printers and Faxes] (Windows 2000: [Printers]) folder.**
Click [start] on the Windows task bar → select [Printers and Faxes] (Windows 2000: [Start] → [Settings] → [Printers]).
- 2** **Click the corresponding printer driver icon.**
- 3** **From the [File] menu, click [Printing Preferences].**
You can also open the printing preferences dialog box by right-clicking the corresponding printer driver icon and selecting [Printing Preferences] from the pop-up menu.
The [Canon MF3110 Printing Preferences] dialog box appears.

Windows 98/Me Properties

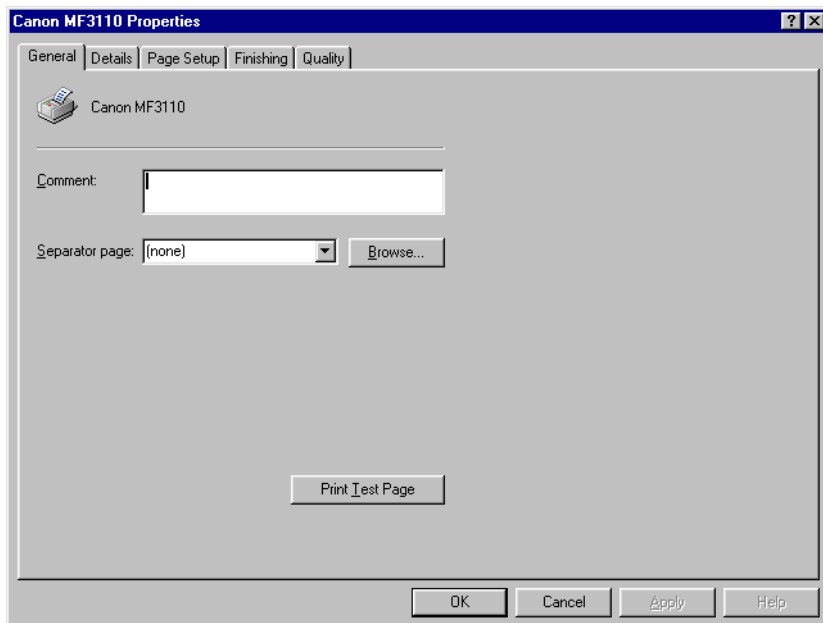


NOTE

The screens shown below are displayed when you open [Canon MF3110 Properties] from the [Printers] folder.

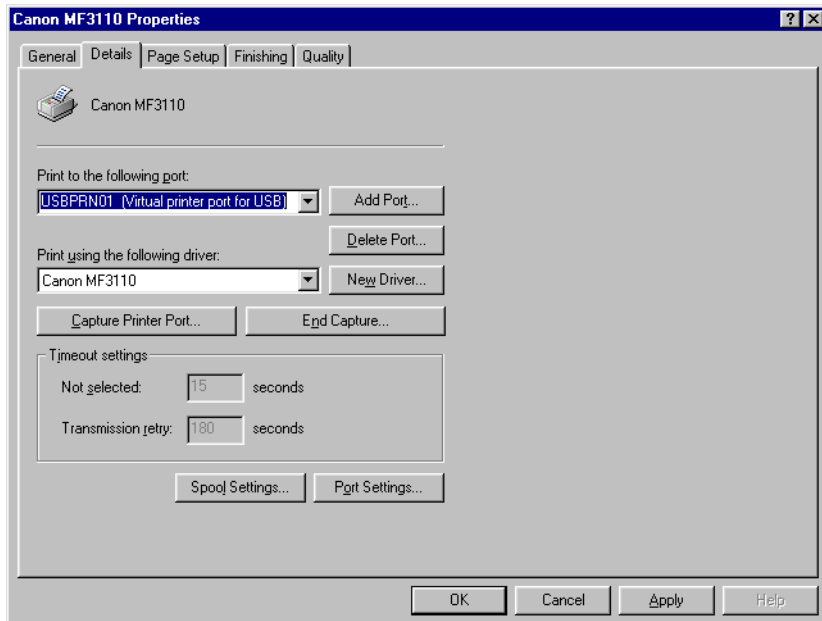
■ General Tab

Lets you print a test page or define separator pages. Refer to your Windows operating system documentation for more information.



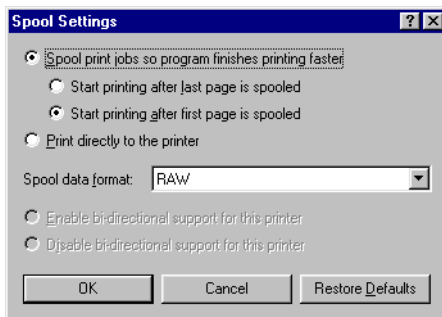
■ Details Tab

Specifies the printer port and time-out settings. Refer to your Windows operating system documentation for more information.



■ Spool Settings

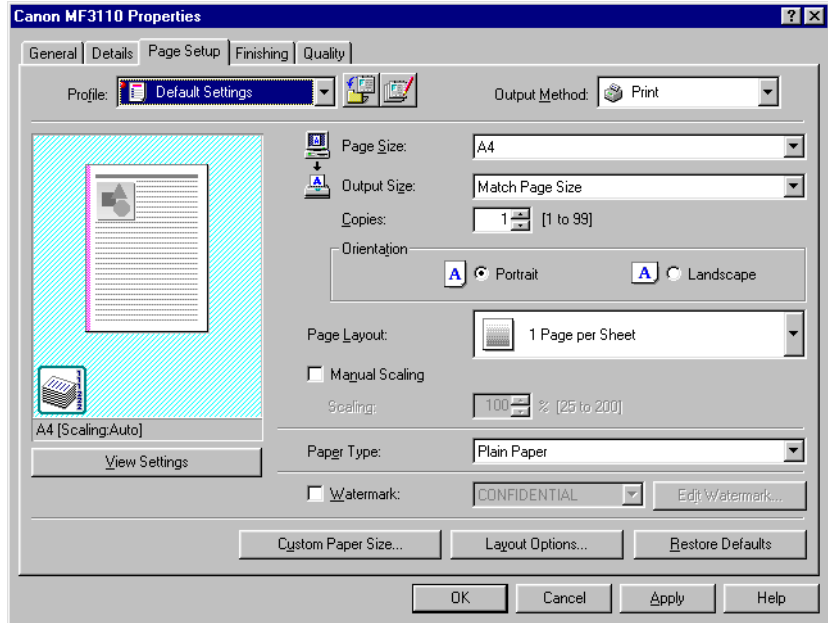
The installer sets the following defaults.



■ Page Setup Tab

Specifies the page settings including the paper size, scaling, number of copies, orientation, and number of pages per sheet.

For information on [Profile], refer to "Profiles," on p. 2-18.



Default settings depend on the country/region of purchase.

Preview image

Displays the image with the currently selected settings reflected. For details on preview image, see page 2-18.

[Page Size]

Selects the original page size to work with in an application. Available options are; [Letter], [11x17], [Legal], [Executive], [A5], [B5], [A4], [B4], [A3], [Envelope Monarch], [Envelope COM10], [Envelope DL], [Envelope C5], and [Custom].

[Output Size]

Selects the output paper size to print on. When this option is set to anything other than [Match Paper Size], the original page size is automatically reduced or enlarged to fit the selected output paper size when printed. However, when [11x17], [B4] or [A3] is selected in the [Page Size], the original page size is automatically reduced to fit [A4] size.



NOTE

Up to 50 sizes can be defined for [Custom Paper Size] with the [Custom Paper Size Settings] option (see p. 2-10).

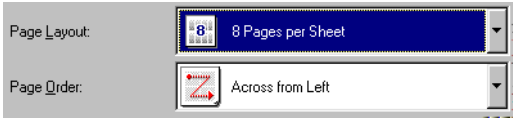
[Copies]	Specifies the number of copies to be printed (1 to 99).
[Orientation]	Selects the direction of printing relative to the paper ([Portrait] or [Landscape]).
[Page Layout]	Selects the number (1, 2, 4, 6, 8, 9 or 16) of original pages per sheet or [Poster] (2 x 2, 3 x 3 or 4 x 4 pages to comprise one sheet). When this option is set to anything other than [1 Page per Sheet] and [Poster], the original page size is reduced to fit the selected page layout when printed.



NOTE

- When [Poster] is selected, [Manual Scaling], [Watermark] and [Layout Options] are disabled.
- When [1 Page per Sheet] is selected, [Manual Scaling] appears. When this option is set to anything other than [1 Page per Sheet] and [Poster], [Manual Scaling] disappears and [Page Order] appears in its place.

[Manual Scaling]	Reduces or enlarges the original page size. Selecting this check box enables the edit box on the right side to specify the magnification factor (25 to 200%).
[Page Order]	Selects the order in which original pages are placed on each sheet of the output paper when more than one page is printed per sheet.



[Paper Type]	<p>Selects the paper type to print. Available paper types are as follows:</p> <ul style="list-style-type: none"> - Plain paper (64 to 90 g/m²) - Plain Paper L - Heavy Paper - Heavy Paper H - Transparencies
--------------	---



NOTE

If you select [Envelope Monarch], [Envelope COM10], [Envelope DL], or [Envelope C5] as [Output Size], [Paper Type] is automatically set to [Envelope].

[Watermark]

Inserts the selected watermark to be printed on each page. 8 types of watermark are available as default:

- CONFIDENTIAL
- COPY
- DRAFT
- FILE COPY
- FINAL
- PRELIMINARY
- PROOF
- TOP SECRET

Selecting this check box enables [Edit Watermark] to add a watermark.



NOTE

This option is disabled when [Page Layout] is set to [Poster].

[Edit Watermark]

Opens the [Edit Watermark] dialog box (see p. 2-9).

[Custom Paper Size]

Opens the [Custom Paper Size Settings] dialog box (see p. 2-10).

[Layout Options]

Opens the [Layout Options] dialog box (see p. 2-11).



NOTE

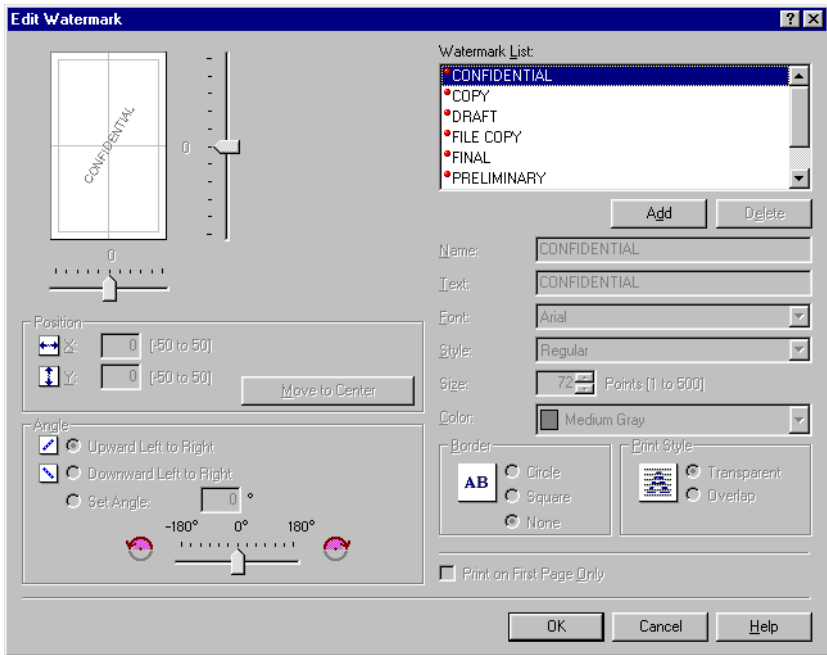
This option is disabled when [Page Layout] is set to [Poster].

[Restore Defaults]

Resets all the current settings to their default values.

■ **Edit Watermark**

Clicking [Edit Watermark] in the [Page Setup] tab sheet opens the [Edit Watermark] dialog box. This dialog box enables you to insert a text string as a watermark onto pages. This option is enabled only when the [Watermark] check box is selected in the [Page Setup] tab sheet (see p. 2-6).



[Watermark List]	Displays the names of registered watermarks. The preview image in the upper left part of the dialog box displays the selected watermark with the specified settings reflected.
[Add]	Registers a new watermark. Clicking this button adds a blank name field in [Watermark List] in which you enter the name of watermark to be registered. Up to 50 watermarks can be registered.
[Delete]	Removes the selected watermark from [Watermark List].
[Position]	Specifies the position where the watermark is printed on each page. You can enter the values in the [X] and [Y] edit boxes (in a range between -50 and +50), or use the X and Y slide bars to move the position.

[Move to Center]	Relocates the watermark to the center of the page.
[Angle]	Specifies the angle of watermark. You can select the corresponding radio button, or use the slide bar to move the angle.
[Name]	Displays the name of the currently selected watermark.
[Text]	Displays the text string of the currently selected watermark.
[Font]	Selects the font type of the watermark.
[Style]	Selects the font style of the watermark. Available styles are [Regular], [Italic], [Bold] and [Bold Italic].
[Size]	Specifies the font size of the watermark (1 to 500).
[Color]	Selects the font color of the watermark.
[Border]	Adds the frame to the watermark. You can select the frame type ([Circle], [Square], or [None]).
[Print Style]	Selects the type of watermark ([Transparent] or [Overlap]).
[Print on First Page Only]	Prints the selected watermark only on the first page of the document.

■ Custom Paper Size Settings

Clicking [Custom Paper Size] in the [Page Setup] tab sheet opens the [Custom Paper Size Settings] dialog box. This dialog box enables you to define custom paper sizes for quick selection and register new custom paper sizes to the [Paper List] box. You can specify the name, width, and height of each size. Up to 50 custom paper sizes can be defined.

Custom Paper Size Settings

Paper List:

Name	Size
• Letter	215.9 x 279.4
• 11x17	279.4 x 431.8
• Legal	215.9 x 355.6
• Executive	184.1 x 266.7
• A5	148.0 x 210.0
• B5	182.0 x 257.0
• A4	210.0 x 297.0
• B4	257.0 x 364.0
• A3	297.0 x 420.0

Name of Custom Paper Size:

Unit:

☒ Millimeter
☐ Inch

Paper Size:

Width: mm [76.2 to 215.9]
Height: mm [127.0 to 355.6]

Buttons: Delete, Register, OK, Cancel, Help



NOTE

This setting is not available when the [Canon MF3110 Properties] dialog box is opened from a Windows application.

[Paper List]

Displays the paper sizes actually available. Selects a paper size from which you can create a custom paper size.

[Name of Custom Paper Size]

Specifies the name of custom paper.

[Unit]

Selects the unit of measurement of paper size ([Millimeter] or [Inch]).

[Paper Size]

Specifies the width and height of the custom paper.



NOTE

Be sure that [Width] does not exceed [Height] when specifying the values.

[Register]

Registers the custom paper and adds its name to [Paper List].

[Delete]

Removes the selected custom paper from [Paper List].

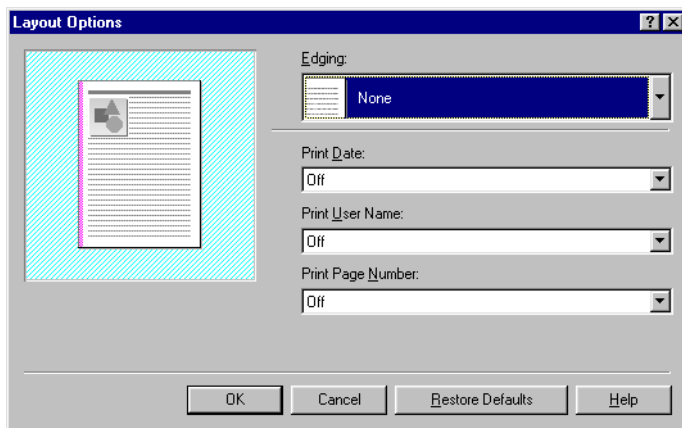


NOTE

You cannot delete a pre-defined paper size.

■ Layout Options

Clicking [Layout Options] in the [Page Setup] tab sheet opens the [Layout Options] dialog box. This dialog box enables you to print pages with a page frame, header, and footer. This option is disabled when [Page Layout] in the [Page Setup] tab sheet is set to [Poster] (see p. 2-6).



[Edging]

Adds a page frame to be printed on each page. 11 options are available.

[Print Date]

Selects if the date is printed on each page or not. Six positions to print the date are available.

[Print User Name]

Selects if the user name is printed on each page or not. Six positions to print the user name are available.

[Print Page Number]

Selects if the page number is printed on each page or not. Six positions to print the page number are available.

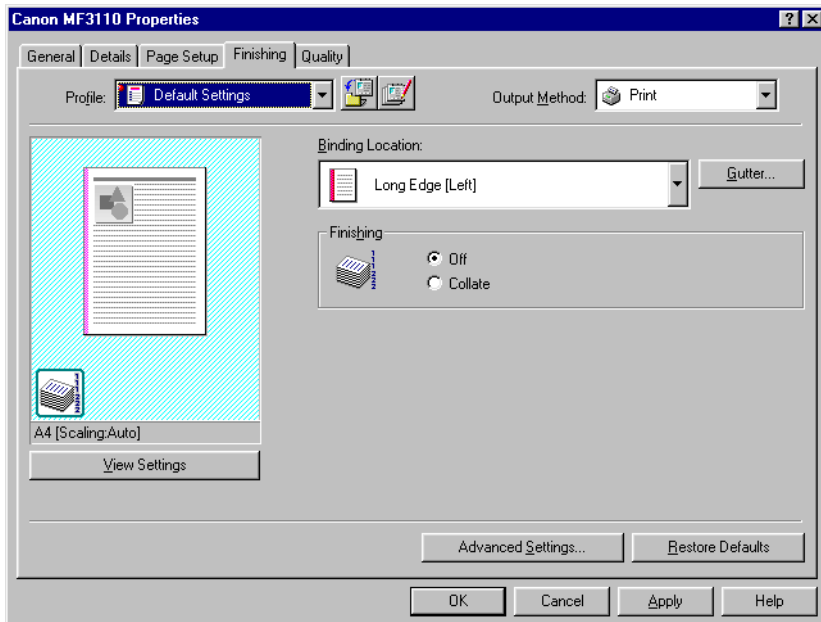
[Restore Defaults]

Resets all the current settings to their default values.

■ Finishing Tab

Specifies the finishing settings for the printed pages including the collating and binding.

For information on [Profile], refer to "Profiles," on p. 2-18.

**[Binding Location]**

Selects a binding location for the printed pages.

[Gutter]

Opens the [Gutter Settings] dialog box (see p. 2-13).

[Finishing]

Selects if the printed pages are sorted by copy or not.

[Advanced Settings]

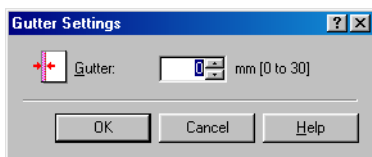
Opens the [Advanced Settings] dialog box (see p. 2-13).

[Restore Defaults]

Resets all the current settings to their default values.

■ Gutter Settings

Clicking [Gutter] in the [Finishing] tab sheet opens the [Gutter Settings] dialog box.

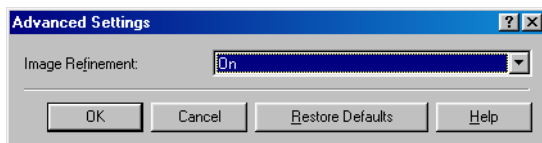


[Gutter]

Specifies the gutter width in a range between 0 and 30 mm.

■ Advanced Settings

Clicking [Advanced Settings] in the [Finishing] tab sheet opens the [Advanced Settings] dialog box.



[Image Refinement]

Sets the Super Smoothing function of the printer.

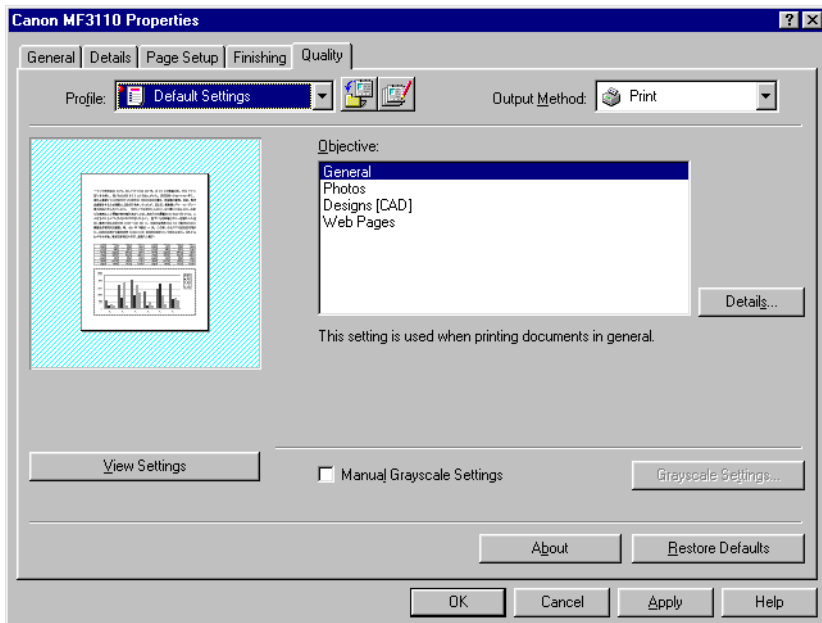
[Restore Defaults]

Resets all the current settings to their default values.

■ Quality Tab

Specifies the settings for print quality including the resolution and contrast.

For more information on [Profile], refer to "Profiles," on p. 2-18.



[Objective]

Selects the best setting for the print job according to document content.

[Details]

Opens the [Detailed Settings] dialog box (see p. 2-15).

[Manual Grayscale Settings]

Enables the manual grayscale. Selecting this check box enables [Grayscale Settings] to access the dialog box which enables you to set the grayscale for images (see p. 2-15).

[Grayscale Settings]

Opens the [Grayscale Settings] dialog box (see p. 2-15).



NOTE

This option is enabled only when [Manual Grayscale Settings] is selected.

[About]

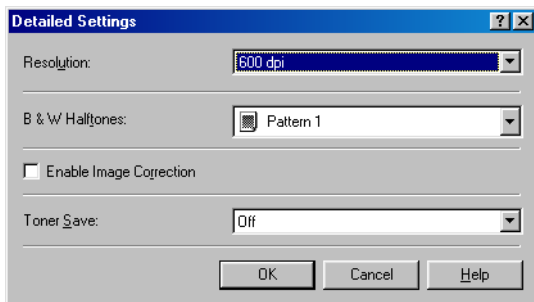
Displays the version information on the driver.

[Restore Defaults]

Resets all the current settings to their default values.

■ Detailed Settings

Clicking [Details] in the [Quality] tab sheet opens the [Detailed Settings] dialog box. This dialog box enables you to specify the detailed settings for print quality.



[Resolution] Selects the printer's resolution in dot per inch (600 dpi or 300 dpi).

[B & W Halftones] Selects a halftone pattern.

[Enable Image Correction] Corrects the roughness of image and inaccuracy in interpolating when printing an enlarged image in low-resolution.

[Toner Save] Selects the setting for saving the toner consumption. ([Printer Default], [Off], or [On])

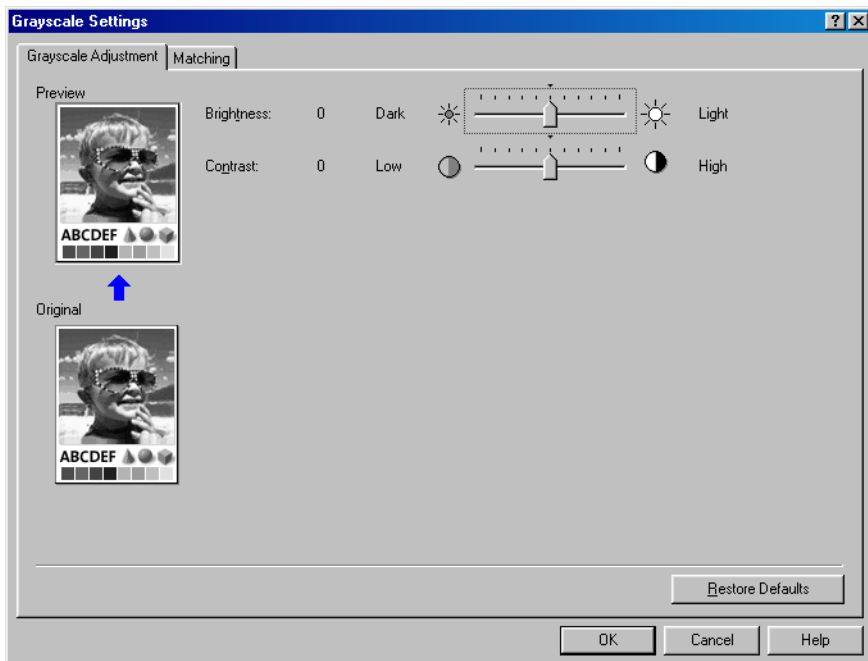
■ Grayscale Settings

Clicking [Grayscale Settings] in the [Quality] tab sheet opens the [Grayscale Settings] dialog box. This dialog box enables you to control the brightness and contrast of images. This function is enabled only when [Manual Grayscale Setting] is selected in the [Quality] tab sheet (see p. 2-14). Two tab sheets are provided in this dialog box.

● Grayscale Adjustment Tab

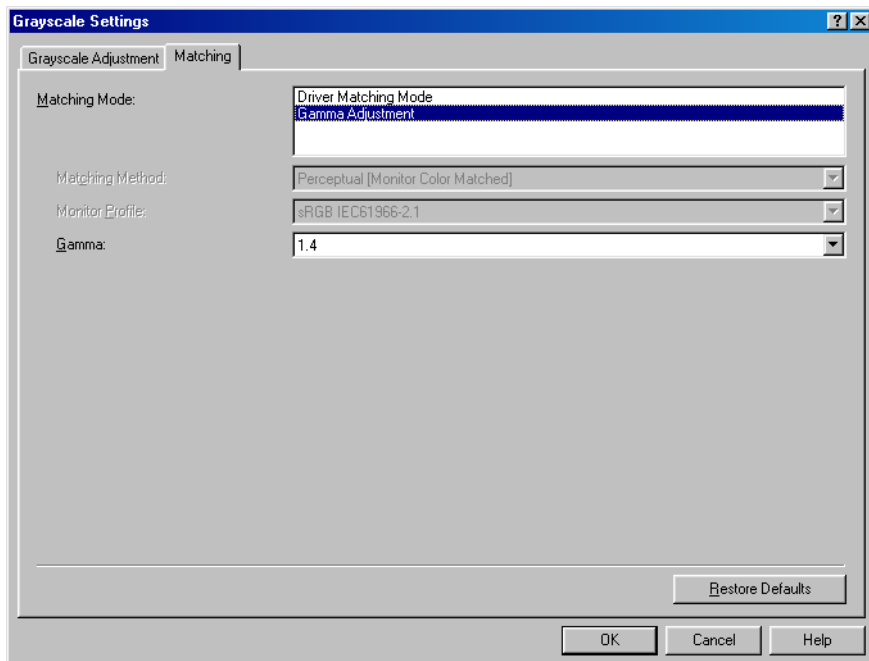
2

Printing



[Preview]	Displays the image with the currently selected brightness and contrast reflected.
[Original]	Displays the original image.
[Brightness]	Adjusts the brightness of the preview image in the range between -5 and 5.
[Contrast]	Adjusts the contrast of the preview image in the range between -5 and 5.
[Restore Defaults]	Resets all the current settings to their default values.

● Matching Tab



[Matching Mode]

Specifies a color-matching mode ([Driver Matching Mode] or [Gamma Adjustment]). Selecting [Driver Matching Mode] enables [Matching Method] and [Monitor Profile]. Selecting [Gamma Adjustment] enables [Gamma].

[Matching Method]

Selects the matching method.

[Monitor Profile]

Selects the profile appropriate for your monitor or scanner.

[Gamma]

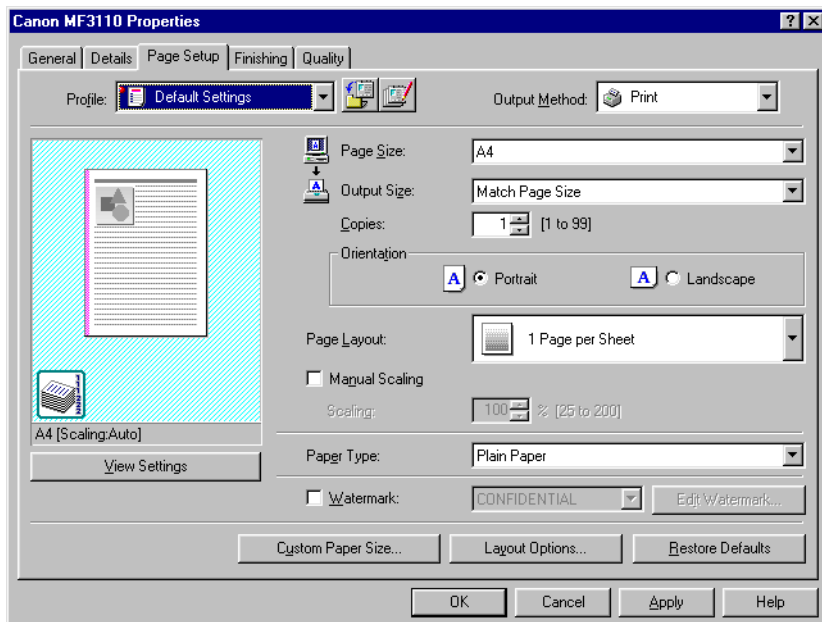
Specifies the gamma correction factor.

[Restore Defaults]

Resets all the current settings to their default values.

■ Profiles

A registered combination of settings for the [Page Setup], [Finishing] and [Quality] tab sheets is referred to as a profile. The profile function commonly provided in each of these tab sheets enables you to add, edit, and select a profile, which facilitates your print jobs.



[Profile]

Selects the profile to apply.

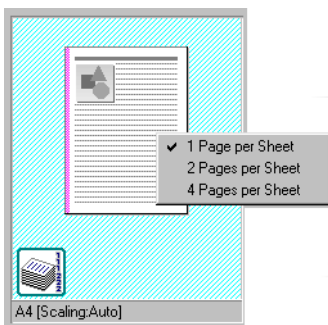
Preview image

Displays the image with the currently selected settings reflected.

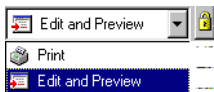
Changes the setting for [Page Layout] every time you click anywhere inside the image of the page (see p. 2-7). The setting changes in the following order; [1 Page per Sheet] → [2 Pages per Sheet] → [4 Pages per Sheet] → [1 Page per Sheet]....

Right-clicking the mouse button on the preview image displays the pop-up menu, from which you can also change the setting for [Page Layout].

Clicking the edges of the preview image of the page changes the binding location.




[Output Method] Switches the job mode between [Print] and [Edit and Preview].



[Print] Executes a normal print job.

[Edit and Preview]

Saves the data in the Canon Page Composer dialog box. If you open [Canon MF3110 Properties] from the [Printers] folder and select the [Edit and Preview] mode,  (Lock) button appears on the right side. When you click this button, the [Edit and Preview] mode is locked.



(Add)

Opens the [Add Profile] dialog box (see p. 2-20).




(Edit)

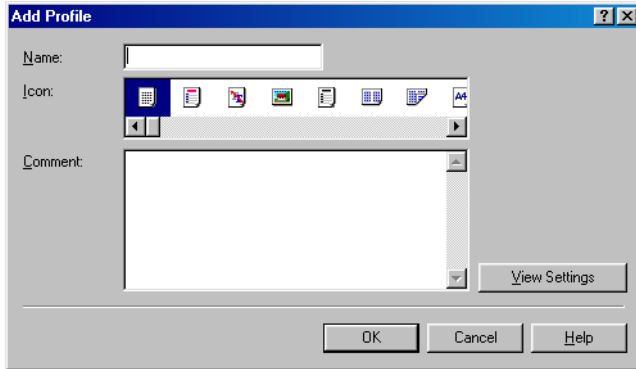
Opens the [Edit Profile] dialog box (see p. 2-20).

[View Settings]

Opens the [View Settings] dialog box (see p. 2-22).

■ Add Profile

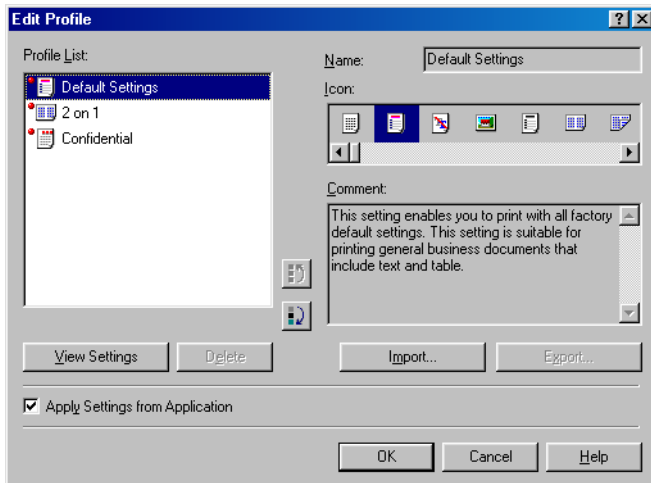
Clicking  (Add) opens the [Add Profile] dialog box. This dialog box enables you to register a new profile with the current settings. You can add up to 50 new profiles.



- [Name]** Specifies the name of the profile to be registered.
- [Icon]** Selects an icon to represent the profile to be registered.
- [Comment]** Adds comments on the profile to be registered.
- [View Settings]** Opens the [View Settings] dialog box (see p. 2-22).

■ Edit Profile

Clicking  (Edit) opens the [Edit Profile] dialog box. This dialog box enables you to edit the profile selected in [Profile List].



- [Profile List]** Displays the list of registered profiles.
- [View Settings]** Opens the [View Settings] dialog box (see p. 2-22).



Moves the profile selected in the [Profile List] one position up.
Moves the profile selected in the [Profile List] one position down.
Removes the selected profile from [Profile List].

[Delete]



NOTE

When one of the pre-defined profiles is selected, this button is disabled.

[Name]

Displays and allows you to change the name of the currently selected profile.



NOTE

When one of the pre-defined profiles is selected, the name cannot be changed.

[Icon]

Displays and allows you to change the icon representing the currently selected profile.



NOTE

When one of the pre-defined profiles is selected, the icon cannot be changed.

[Comment]

Displays and allows you to change the comment on the currently selected profile.



NOTE

When one of the pre-defined profiles is selected, the comment cannot be changed.

[Import]

Enables you to import profile information from a file.

[Export]

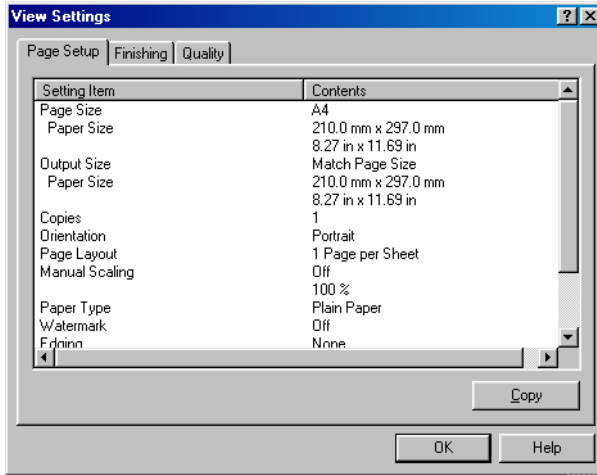
Enables you to export the selected profile information to a file.

[Apply Settings from Application]

Applies the selected profile only to the settings other than [Paper Size], [Orientation] and [Copies].

■ View Settings

Clicking [View Settings] opens the [View Settings] dialog box. This dialog box displays the current settings in the [Page Setup], [Finishing], and [Quality] tab sheets.



[Copy]

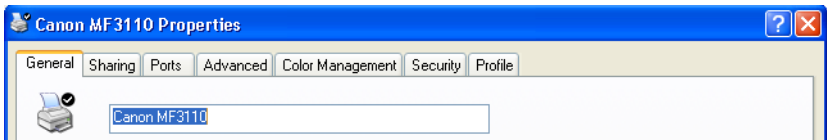
Copies the contents of the current settings to the clipboard.

Windows 2000/XP Properties and Printing Preferences

The printer driver for Windows 2000/XP has the following two main dialog boxes:

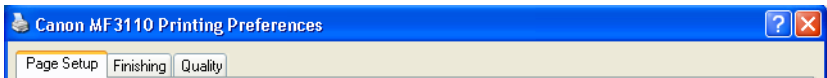
■ The Properties Dialog Box

This dialog box enables you to set up the printer configuration and configure the print settings for all Windows applications.



■ The Printing Preferences Dialog Box

This dialog box enables you to specify the default settings for the printing options available when you print on the Canon MF3110.



Properties

The [Canon MF3110 Properties] dialog box contains several tab sheets that enable you to set up the printer configuration and configure the print settings.

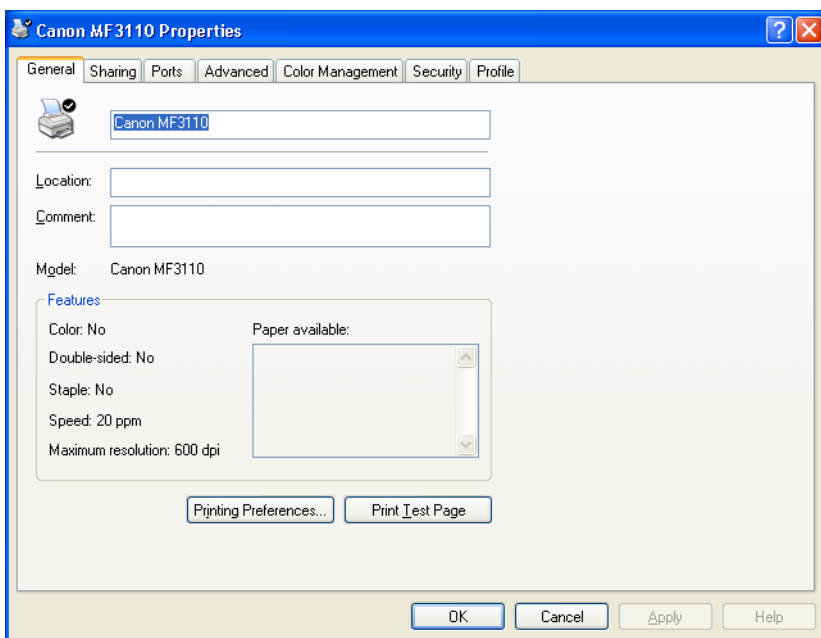


NOTE

- The number of tabs displayed in the properties dialog box depends on how you have your system set up.
- For more information about the following features, see the online Help (see p. 1-2).
- The screen shots shown are from Windows XP.

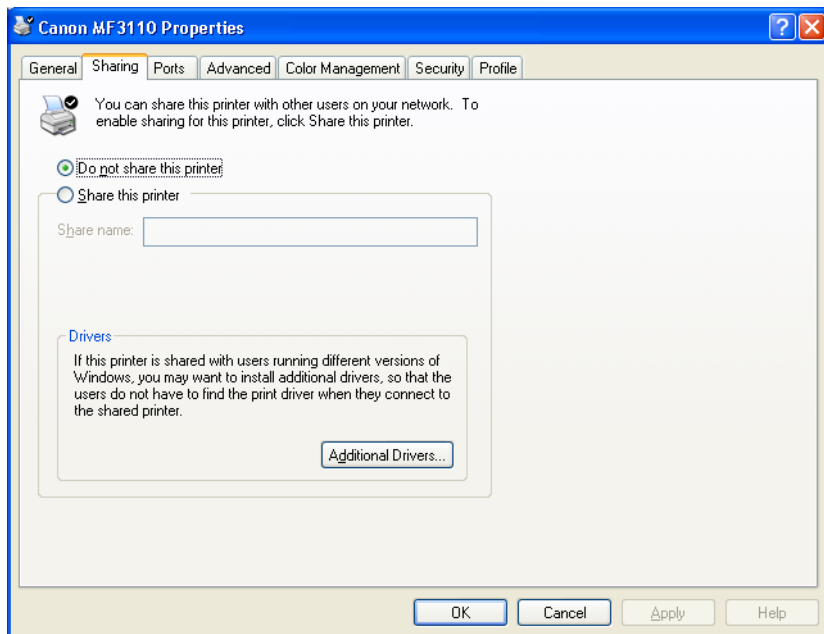
■ General Tab

Lets you print a test page and define printing preferences. Refer to your Windows operating system documentation for more information.



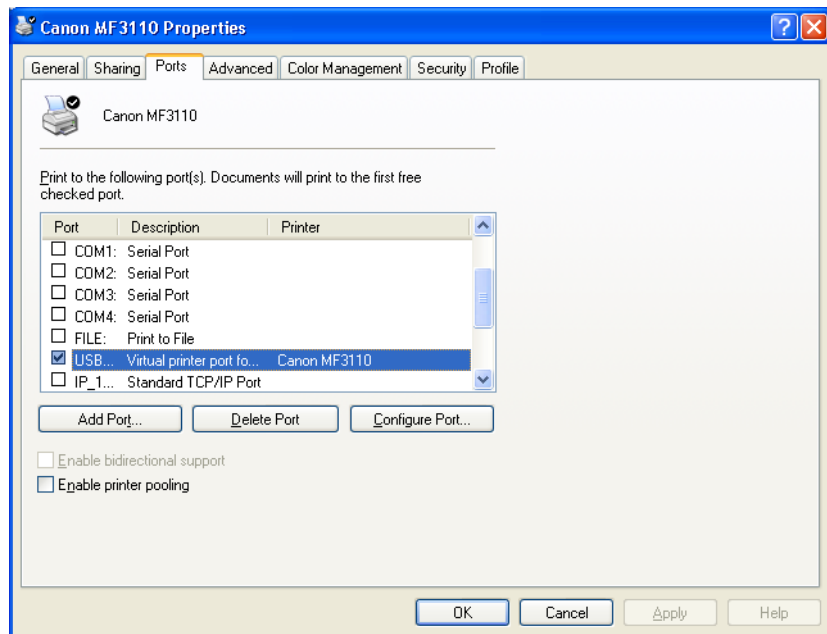
■ Sharing Tab

Specifies the printer sharing settings. This tab sheet is available only when the printer sharing is enabled (see p. 2-50). Refer to your Windows operating system documentation for more information.



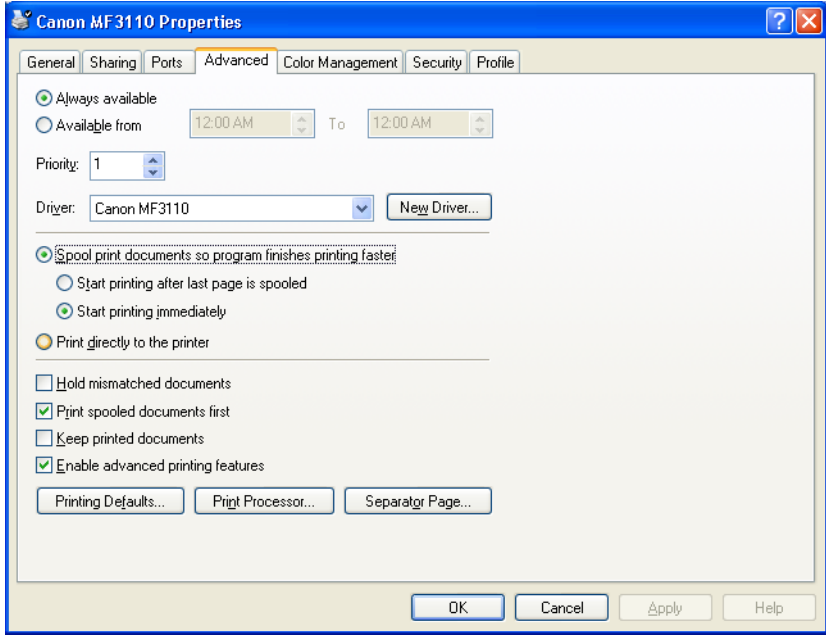
■ Ports Tab

Specifies the port to which the printer is attached. Refer to your Windows operating system documentation for more information.



■ Advanced Tab

Specifies the settings for print spooling. Refer to your Windows operating system documentation for more information.

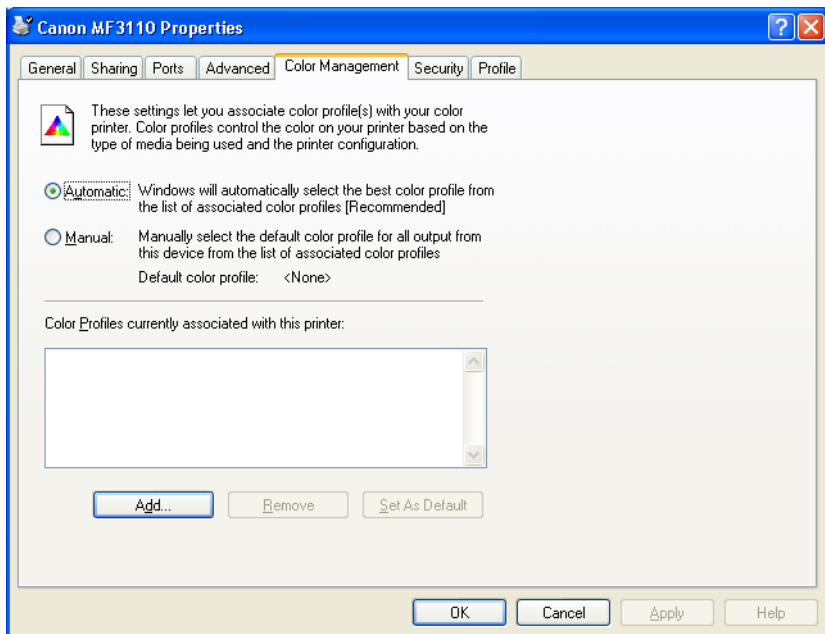


NOTE

[Spool print documents so program finishes printing faster] and [Start printing immediately] are set automatically when you install the printer driver.

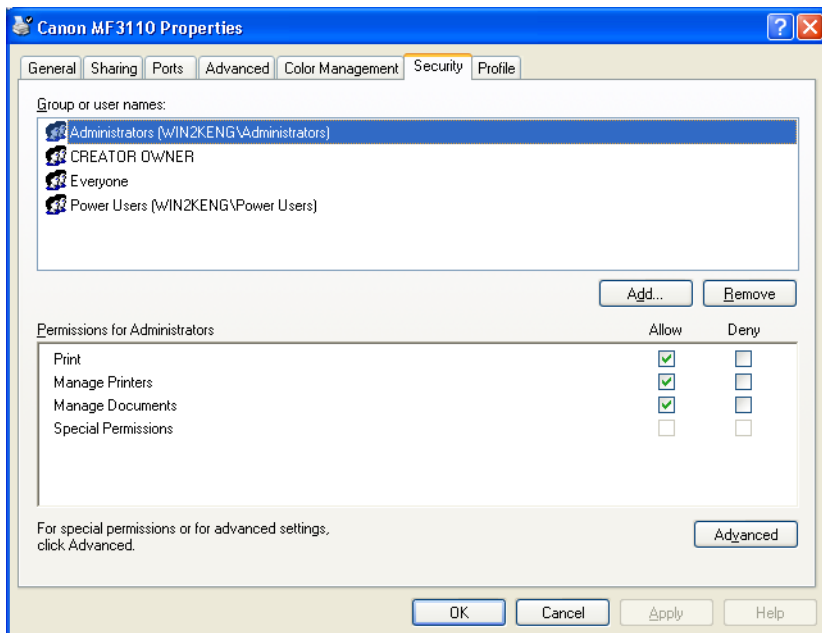
■ Color Management Tab

Associates color profiles with your color printer. Refer to your Windows operating system documentation for more information.



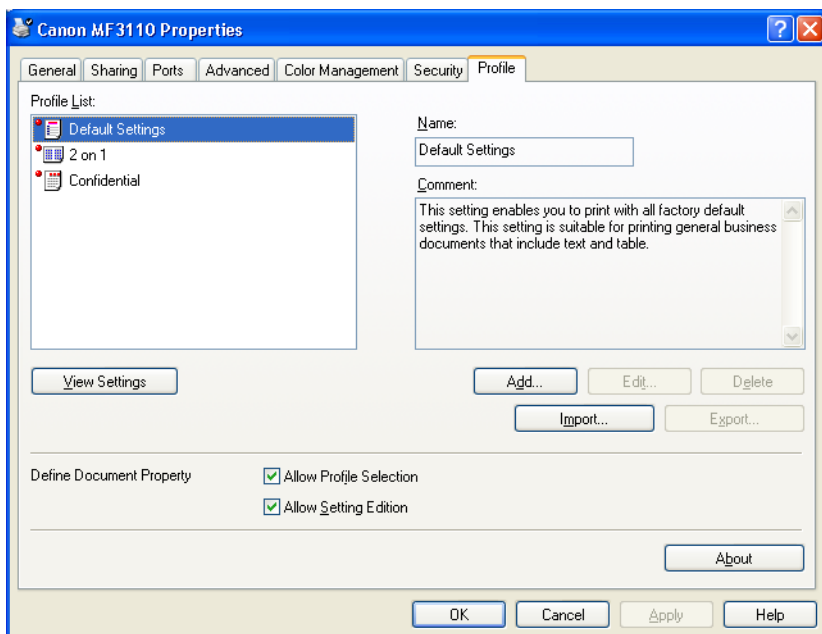
■ Security Tab

Specifies security settings. Refer to your operating system documentation for more information.



■ Profile Tab

Enables you to add, edit, and select a profile to be applied to print jobs.



[Profile List]

Displays the list of registered profiles.

[Name]

Displays the name of the profile currently selected in [Profile List].

[Comment]

Describes the currently selected profile.

[View Settings]

Displays the settings of the currently selected profile.

[Add]

Opens the [Add/Edit Profile] dialog box which enables you to register a new profile (see p. 2-30).

[Edit]

Opens the [Add/Edit Profile] dialog box which enables you to edit the registered profiles (see p. 2-30).



NOTE

When one of the pre-defined profile ([Default Settings], [2 on 1], or [Confidential]) is selected in [Profile List], this button is disabled.

[Delete]

Removes the selected profile from [Profile List].



NOTE

When one of the pre-defined profiles is selected, this button is disabled.

[Import]

Enables you to import profile information from a file.

[Export]

Enables you to export the selected profile information to a file.



NOTE

When one of the pre-defined profiles is selected, this button is disabled.

[Define Document Property]

Controls the profile settings.

[Allow Profile Selection]

Enables the selecting of profiles in the default document properties dialog box.

[Allow Setting Edition]

Enables the adding and editing of profiles as well as selecting.



NOTE

When [Allow Profile Selection] is cleared, [Allow Setting Edition] is disabled.

■ Add/Edit Profile

Clicking [Add] or [Edit] opens the [Add/Edit Profiles] dialog box which enables you to register new profiles and edit existing profiles. This dialog box has four tab sheets.

● Attribution Tab

The [Attribution] tab sheet enables you to specify attributions of the profile.

[Name]

Specifies the name of the new profile, or allows you to change the name of the profile selected in the [Profile] tab sheet.



NOTE

When one of the pre-defined profiles is selected, the name cannot be changed.

[Icon]

Selects an icon to represent the new profile, or allows you to change the icon of the profile selected in the [Profile] tab sheet.



NOTE

When one of the pre-defined profiles is selected, the icon cannot be changed.

[Comment]

Adds comments on the new profile, or allows you to change the comments on the profile selected in the [Profile] tab sheet.



NOTE

When one of the pre-defined profiles is selected, the comment cannot be changed.

[Restore Defaults]

Resets all the current settings to their default values.

- **Page Setup Tab**

Specifies the page settings including the paper size, scaling, number of copies, orientation, and number of pages per sheet (see p. 2-33).

- **Finishing Tab**

Specifies the finishing settings for the printed pages including the collating and binding (see p. 2-38).

- **Quality Tab**

Specifies the print quality including resolution, brightness and contrast (see p. 2-39).

Printing Preferences

The [Canon MF3110 Printing Preferences] dialog box contains three tab sheets that enable you to specify the default print settings for every print job.



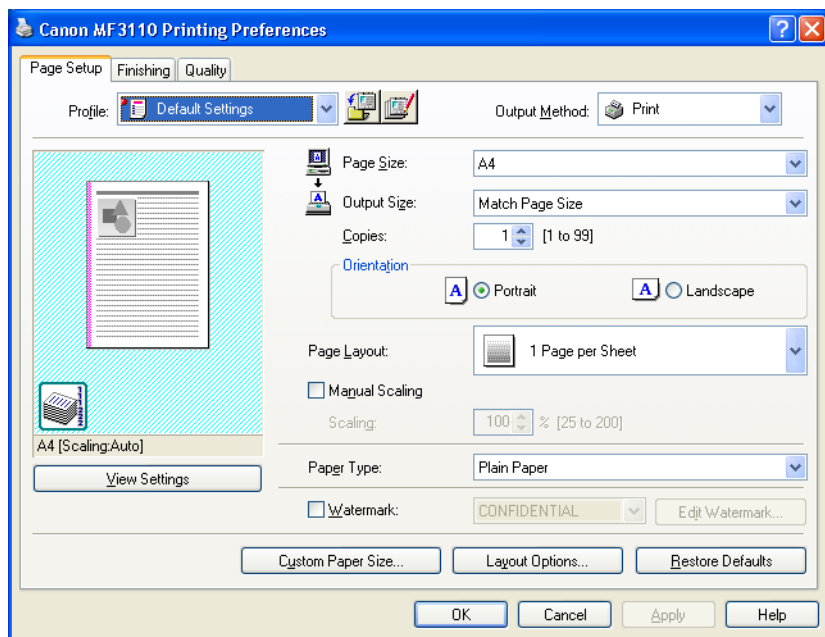
NOTE

- *If you access the equivalent dialog box from an application's [Print] dialog box, your selected printing options apply only to the current print job.*
- *For more information about the following features, see the online Help (see p. 1-2).*
- *The screen shots shown are from Windows XP.*

■ Page Setup Tab

Specifies the page settings including the paper size, scaling, number of copies, orientation, and number of pages per sheet.

For information on [Profile], refer to "Profiles," on p. 2-43.



Default settings depend on the country/region of purchase.

Preview image

Displays the image with the currently selected settings reflected. For details on preview image, see page 2-43.

[Page Size]

Selects the original page size to work with in an application. Available options are; [Letter], [11 x17], [Legal], [Executive], [A5], [B5], [A4], [B4], [A3], [Envelope Monarch], [Envelope COM10], [Envelope DL], [Envelope C5], and [Custom].

[Output Size]

Selects the output paper size to print on. When this option is set to anything other than [Match Paper Size], the original page size is automatically reduced or enlarged to fit the selected output paper size when printed. However, when [11x17], [B4] or [A3] is selected in the [Page Size], the original page size is automatically reduced to fit [A4] size.

[Copies]

Specifies the number of copies to be printed (1 to 99).

[Orientation]

Selects the direction of printing relative to the paper ([Portrait] or [Landscape]).

[Page Layout]

Selects the number (1, 2, 4, 6, 8, 9 or 16) of original pages per sheet or [Poster] (2 x 2, 3 x 3 or 4 x 4 pages to comprise one sheet). When this option is set to anything other than [1 Page per Sheet] and [Poster], the original page size is reduced to fit the selected page layout when printed.



NOTE



- When [Poster] is selected, [Manual Scaling], [Watermark] and [Layout Options] are disabled.
- When [1 Page per Sheet] is selected, [Manual Scaling] appears. When this option is set to anything other than [1 Page per Sheet] and [Poster], [Manual Scaling] disappears and [Page Order] appears in its place.

[Manual Scaling]

Reduces or enlarges the original page size. Selecting this check box enables the edit box on the right side to specify the magnification factor (25 to 200%).

[Page Order]

Selects the order in which original pages are placed on each sheet of the output paper when more than one page is printed per sheet.

Page Layout:	 8 Pages per Sheet
Page Order:	 Across from Left

[Paper Type]

Selects the paper type to print. Available paper type are as follows:

- Plain paper (64 to 90 g/m²)
- Plain Paper L
- Heavy Paper
- Heavy Paper H
- Transparencies



NOTE

If you select [Envelope Monarch], [Envelope COM10], [Envelope DL], or [Envelope C5] as [Output Size], [Paper Type] is automatically set to [Envelope].

[Watermark]

Inserts the selected watermark to be printed on each page. Eight types of watermark are available as default:

- CONFIDENTIAL
- COPY
- DRAFT
- FILE COPY
- FINAL
- PRELIMINARY
- PROOF
- TOP SECRET

Selecting this check box enables [Edit Watermark] to add a watermark.



NOTE

This option is disabled when [Page Layout] is set to [Poster].

[Edit Watermark]

Opens the [Edit Watermark] dialog box (see p. 2-35).

[Custom Paper Size]

Opens the [Custom Paper Size Settings] dialog box (see p. 2-36).

[Layout Options]

Opens the [Layout Options] dialog box (see p. 2-37).



NOTE

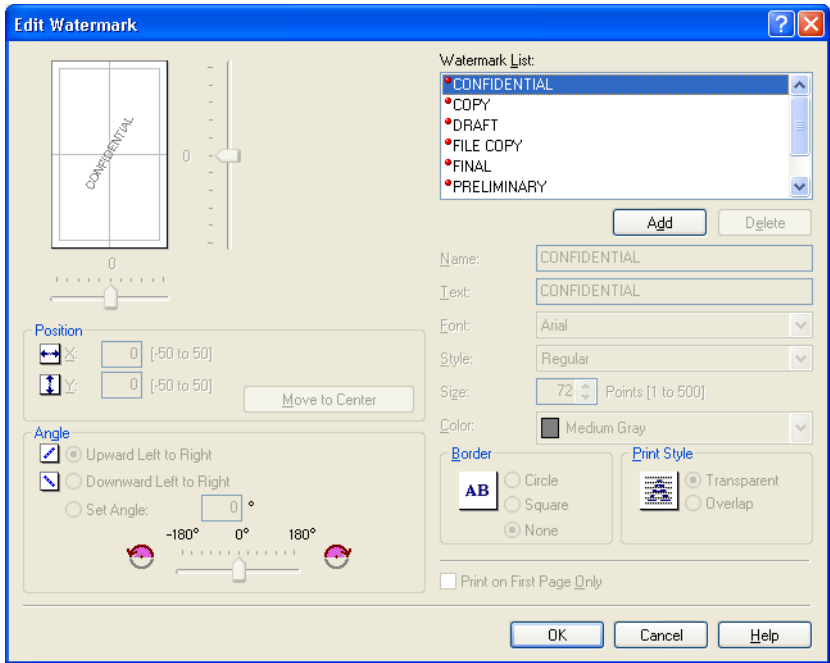
This option is disabled when [Page Layout] is set to [Poster].

[Restore Defaults]

Resets all the current settings to their default values.

■ **Edit Watermark**

Clicking [Edit Watermark] in the [Page Setup] tab sheet opens the [Edit Watermark] dialog box. This dialog box enables you to insert a text string as a watermark onto pages. This option is enabled only when the [Watermark] check box is selected in the [Page Setup] tab sheet (see p. 2-33).



[Watermark List]

Displays the names of registered watermarks. The preview image in the upper left part of the dialog box displays the selected watermark with the specified settings reflected.

[Add]

Registers a new watermark. Clicking this button adds a blank name field in [Watermark List] in which you enter the name of watermark to be registered. Up to 50 watermarks can be registered.

[Delete]

Removes the selected watermark from [Watermark] List.

[Position]

Specifies the position where the watermark is printed on each page. You can enter the values in the [X] and [Y] edit boxes (in a range between -50 and +50), or use the X and Y slide bars to move the position.

[Move to Center]

Relocates the watermark to the center of the page.

[Angle]

Sets the angle of watermark. You can select the corresponding radio button, or use the slide bar to move the angle, or enter a desired value in the [Set Angle] edit box (in a range between -180 and 180).

[Name]

Displays the name of the currently selected watermark.

[Text]

Displays the text string of the currently selected watermark.

[Font]

Selects the font type of the watermark.

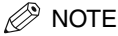
[Style]

Selects the font style of the watermark. Available styles are [Regular], [Italic], [Bold] and [Bold Italic].

[Size]	Specifies the font size of the watermark (1 to 500).
[Color]	Selects the font color of the watermark.
[Border]	Adds the frame to the watermark. You can select the frame type ([Circle], [Square], or [None]).
[Print Style]	Selects the type of watermark ([Transparent] or [Overlap]).
[Print on First Page Only]	Prints the selected watermark only on the first page of the document.

■ Custom Paper Size Settings

Clicking [Custom Paper Size] in the [Page Setup] tab sheet opens the [Custom Paper Size Settings] dialog box. This dialog box enables you to define custom paper sizes for quick selection and register new custom paper sizes to the [Paper List] box. You can specify the name, width, and height of each size.



NOTE

This setting is available only when you open the [Canon MF3110 Printing Preferences] dialog box from the [Printers and Faxes] folder.

Paper List:	
Name	Size
• Letter	215.9 × 279.4
• 11x17	279.4 × 431.8
• Legal	215.9 × 355.6
• Executive	184.1 × 266.7
• A5	148.0 × 210.0
• B5	182.0 × 257.0
• A4	210.0 × 297.0
• B4	257.0 × 364.0
• A3	297.0 × 420.0

Buttons: Delete, Register

Name of Custom Paper Size:

Unit
☒ Millimeter
☐ Inch

Paper Size
 Width: mm [76.2 to 215.9]
 Height: mm [127.0 to 355.6]

Buttons: OK, Cancel, Help

[Paper List]	Displays the paper sizes actually available. Selects a paper size from which you can create a custom paper size.
[Name of Custom Paper Size]	Specifies the name of custom paper.
[Unit]	Selects the unit of measurement of paper size ([Millimeter] or [Inch]).
[Paper Size]	Specifies the width and height of the custom paper.



NOTE

Be sure that [Width] does not exceed [Height] when specifying the values.

[Register]	Registers the custom paper and adds its name to [Paper List].
-------------------	---

NOTE

To register a new custom paper size, be sure to log on as a member of Administrators (Windows 2000/XP) or Power User (Windows 2000 only). To change the paper size for the existing custom paper size, be sure to log on as a member of Administrators.

[Delete]

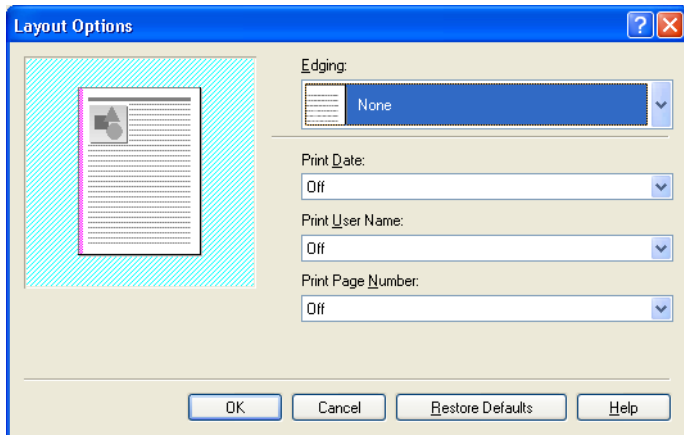
Removes the selected custom paper from [Paper List].

NOTE

- You cannot delete a pre-defined paper size.
- To delete a registered custom paper size, you be sure to log on as a member of Administrators.

■ Layout Options

Clicking [Layout Options] in the [Page Setup] tab sheet opens the [Layout Options] dialog box. This dialog box enables you to print pages with a page frame, header, and footer. This option is disabled when [Page Layout] in the [Page Setup] tab sheet is set to [Poster] (see p. 2-33).



[Edging]

Adds a page frame to be printed on each page. 11 options are available. Edging is not available to use with [Print Grayscale Sample] in the [Quality] tab sheet (see p. 2-39).

[Print Date]

Selects if the date is printed on each page or not. Six positions to print the date are available.

[Print User Name]

Selects if the user name is printed on each page or not. Six positions to print the user name are available.

[Print Page Number]

Selects if the page number is printed on each page or not. Six positions to print the page number are available.

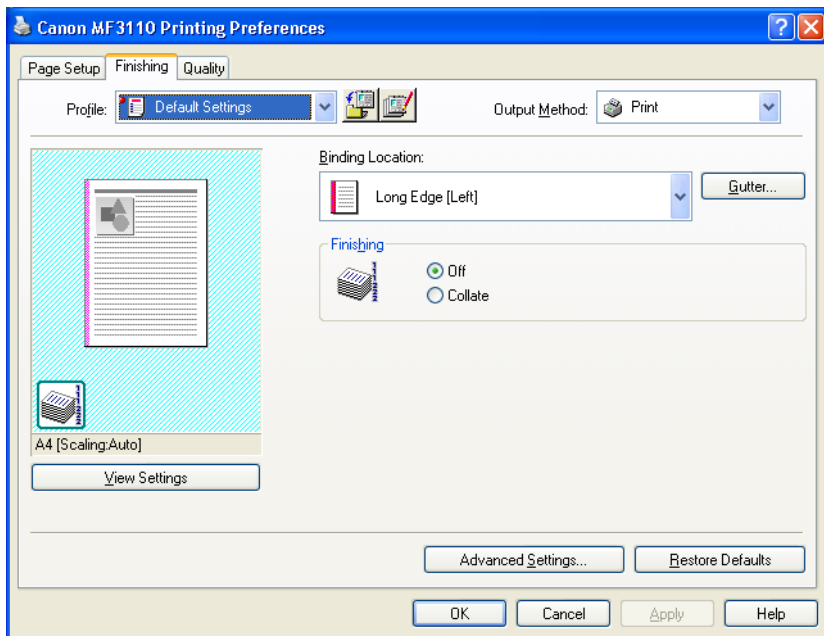
[Restore Defaults]

Resets all the current settings to their default values.

■ Finishing Tab

Specifies the finishing settings for the printed pages including the collating and binding.

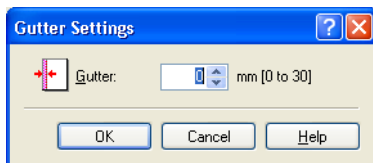
For information on [Profile], refer to "Profiles," on p. 2-43.



[Binding Location]	Selects a binding location for the printed pages.
[Gutter]	Opens the [Gutter Settings] dialog box (see p. 2-38).
[Finishing]	Selects if the printed pages are sorted by copy or not ([Off] or [Collate]).
[Advanced Settings]	Opens the [Advanced Settings] dialog box (see p. 2-39).
[Restore Defaults]	Resets all the current settings to their default values.

■ Gutter Settings

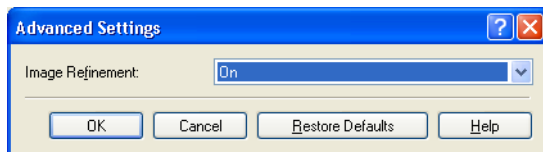
Clicking [Gutter] in the [Finishing] tab sheets opens the [Gutter Settings] dialog box.



[Gutter]	Specifies the gutter width in a range between 0 and 30 mm.
-----------------	--

■ Advanced Settings

Clicking [Advanced Settings] in the [Finishing] tab sheet opens the [Advanced Settings] dialog box.



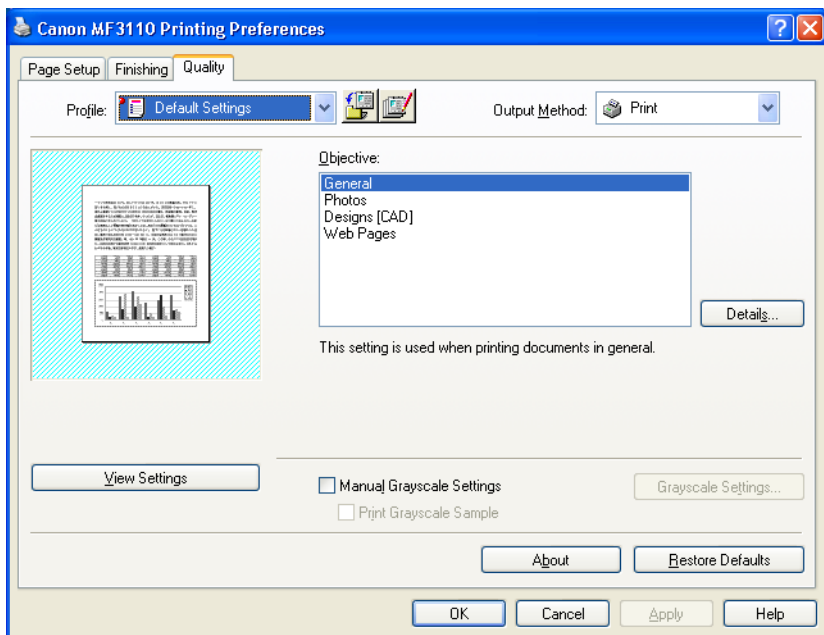
[Image Refinement] Sets the Super Smoothing function of the printer.

[Restore Defaults] Resets all the current settings to their default values.

■ Quality Tab

Specifies the settings for print quality including the resolution and contrast.

For information on [Profile], refer to "Profiles," on p. 2-43.



[Objective] Selects the best setting for the print job according to document content.

[Details] Opens the [Detailed Settings] dialog box (see p. 2-40).

[Manual Grayscale Settings]

Enables the manual grayscale. Selecting this check box enables [Grayscale Settings] to access the dialog box which allows you to set the grayscale for images (see p. 2-40).

[Print Grayscale Sample] Prints nine thumbnails per sheet to provide the print samples with the current grayscale settings when printing the document.



NOTE

This option is enabled only when [Manual Grayscale Settings] is selected.

[Grayscale Settings]

Opens the [Grayscale Settings] dialog box (see p. 2-40).



NOTE

This option is enabled only when [Manual Grayscale Settings] is selected.

[About]

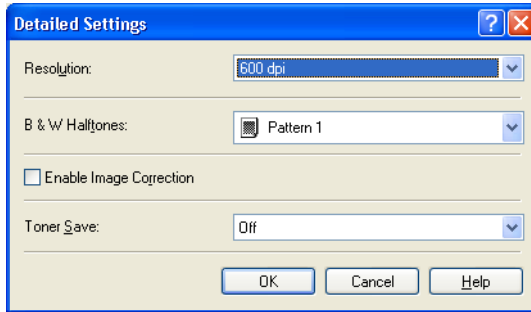
Displays the version information on the driver.

[Restore Defaults]

Resets all the current settings to their default values.

■ Detailed Settings

Clicking [Details] in the [Quality] tab sheet opens the [Detailed Settings] dialog box. This dialog box enables you to specify detailed settings for print quality.



[Resolution]

Selects the printer's resolution in dot per inch (600 dpi or 300 dpi).

[B & W Halftones]

Selects a halftone pattern.

[Enable Image Correction]

Corrects the roughness of image and inaccuracy in interpolating when printing an enlarged image in low-resolution.

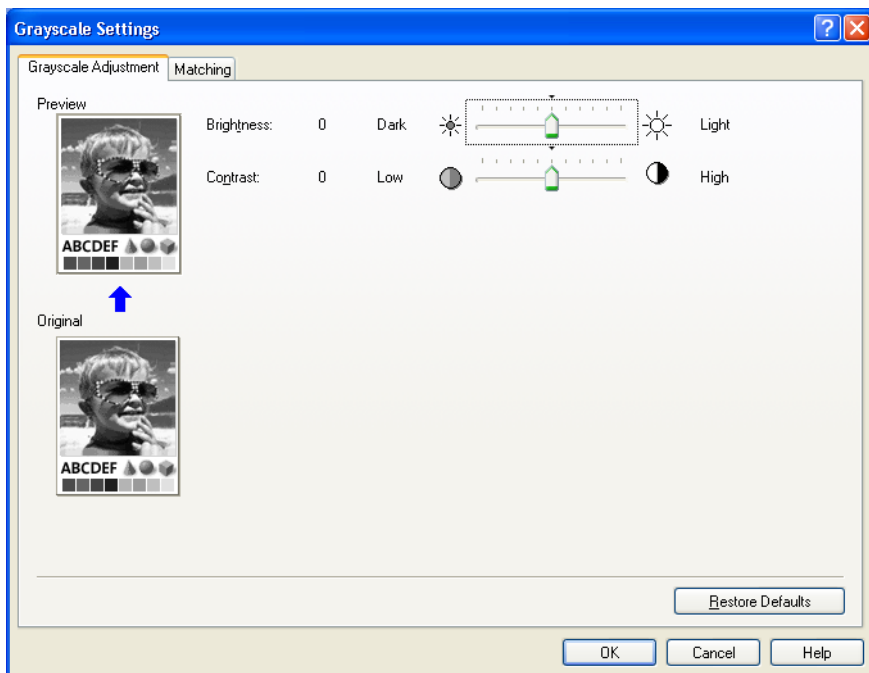
[Toner Save]

Selects the setting for saving the toner consumption ((Printer Default), [Off], or [On]).

■ Grayscale Settings

Clicking [Grayscale Settings] in the [Quality] tab sheet opens the [Grayscale Settings] dialog box. This dialog box enables you to control the brightness and contrast of images. This function is enabled only when [Manual Grayscale Settings] is selected in the [Quality] tab sheet (see p. 2-39). Two tab sheets are provided in this dialog box.

● Grayscale Adjustment Tab



[Preview]

Displays the image with the currently selected brightness and contrast reflected.

[Original]

Displays the original image.

[Brightness]

Adjusts the brightness of the preview image in the range between -5 and 5.

[Contrast]

Adjusts the contrast of the preview image in the range between -5 and 5.

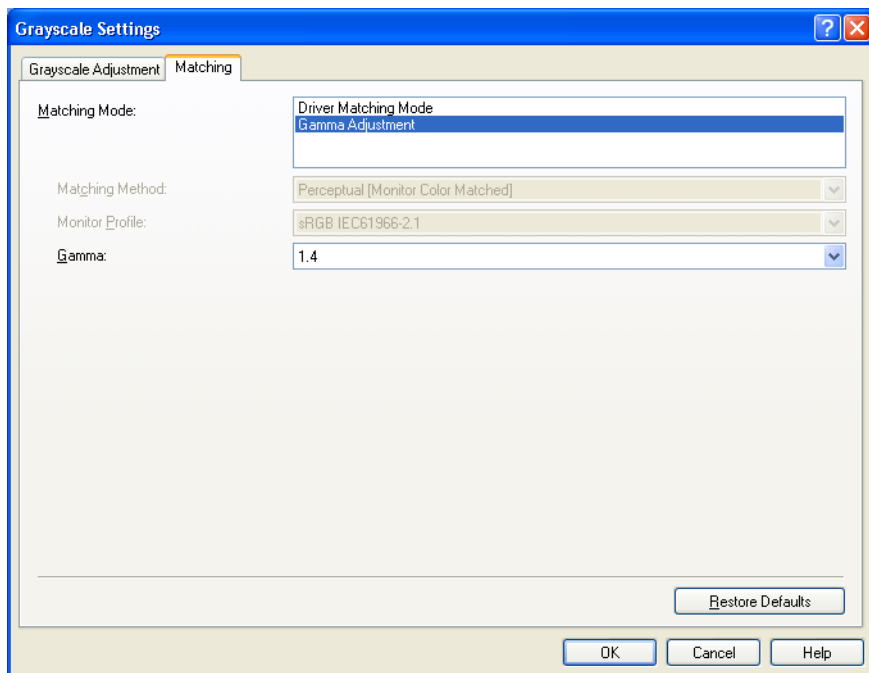
[Restore Defaults]

Resets all the current settings to their default values.

● Matching Tab

2

Printing



[Matching Mode]

Specifies a color-matching mode ([Driver Matching Mode] or [Gamma Adjustment]). Selecting [Driver Matching Mode] enables [Matching Method] and [Monitor Profile]. Selecting [Gamma Adjustment] enables [Gamma].

[Matching Method]

Selects the matching method.

[Monitor Profile]

Selects the profile appropriate for your monitor or scanner.

[Gamma]

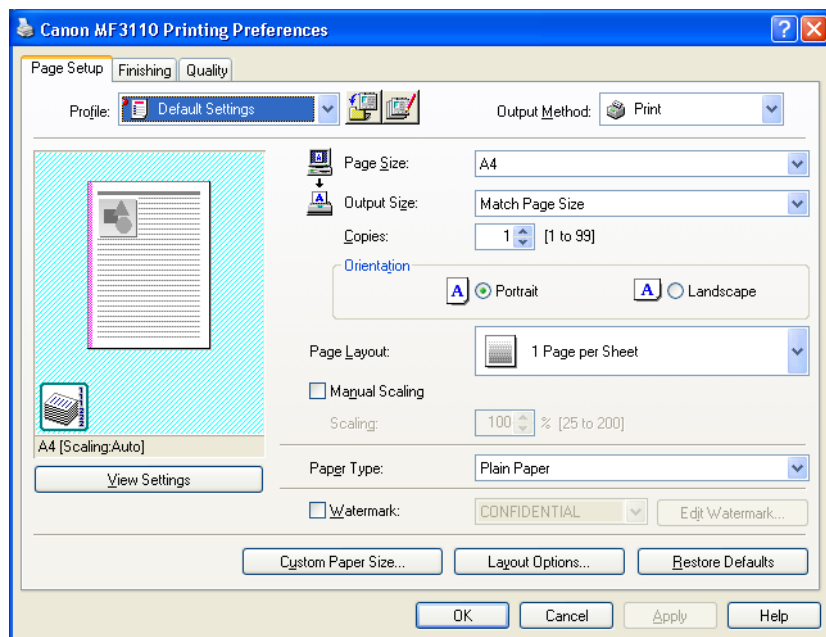
Specifies the gamma correction factor.

[Restore Defaults]

Resets all the current settings to their default values.

■ Profiles

A registered combination of settings for the [Page Setup], [Finishing], and [Quality] tab sheets is referred to as a profile. The profile function commonly provided in each of these tab sheets enables you to add, edit, and select a profile, which facilitates your print jobs.

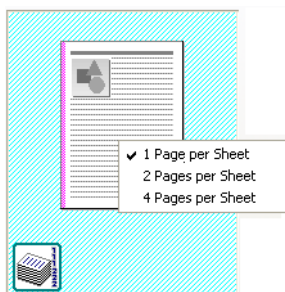


[Profile]

Selects the profile to apply.

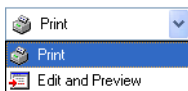
Preview image

Displays the image with the currently selected settings reflected.
Changes the setting for [Page Layout] every time you click anywhere inside the image of the page (see p. 2-33). The setting changes in the following order; [1 Page per Sheet] → [2 Pages per Sheet] → [4 Pages per Sheet] → [1 Page per Sheet]....
Right-clicking the mouse button on the preview image displays the pop-up menu, from which you can also change the setting for [Page Layout].
Clicking the edges of the preview image of the page changes the binding location.




[Output Method]

Switches the job mode between [Print] and [Edit and Preview].



[Print] Executes a normal print job.

[Edit and Preview]

Saves the data in the Canon Page Composer dialog box. If you open [Canon MF3110 Properties] from the [Printers] folder and select the [Edit and Preview] mode,  (Lock) button appears on the right side. When you click this button, the [Edit and Preview] mode is locked.



(Add) Opens the [Add Profile] dialog box (see p. 2-44).




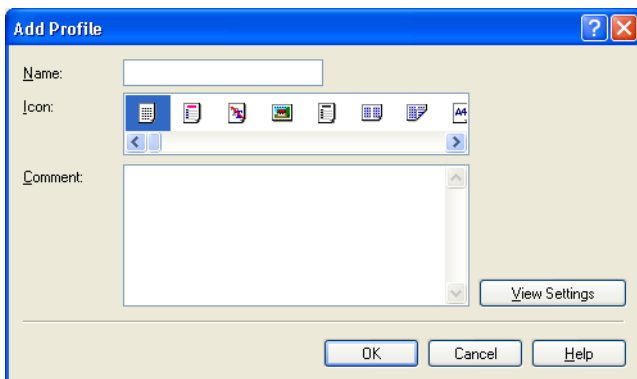
(Edit) Opens the [Edit profile] dialog box (see p. 2-45).

[View Settings]

Opens the [View Settings] dialog box (see p. 2-46).

■ Add Profile

Clicking  (Add) opens the [Add Profile] dialog box. This dialog box enables you to register a new profile with the current settings. You can add up to 50 new profiles.



[Name] Specifies the name of the profile to be registered.

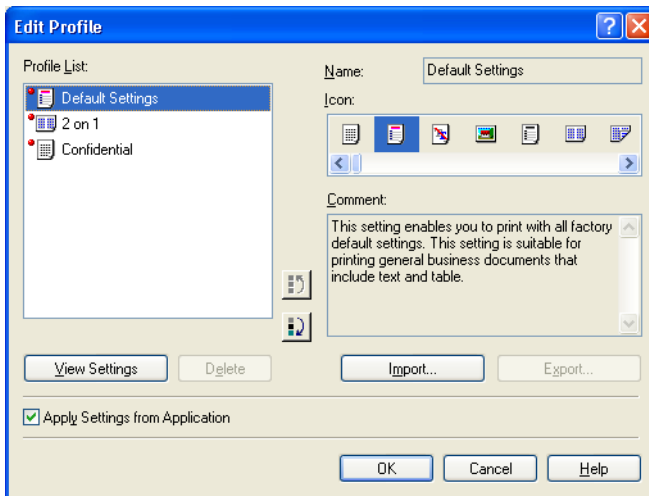
[Icon] Selects an icon to represent the profile to be registered.

[Comment] Adds comments on the profile to be registered.

[View Settings] Opens the [View Settings] dialog box (see p. 2-46).

■ Edit Profile

Clicking  (Edit) opens the [Edit Profile] dialog box. This dialog box enables you to edit the profile selected in [Profile List].



[Profile List]

Displays the list of registered profiles.

[View Settings]

Opens the [View Settings] dialog box (see p. 2-46).



Moves the profile selected in the [Profile List] one position up.



Moves the profile selected in the [Profile List] one position down.

[Delete]

Removes the selected profile from [Profile List].



NOTE

When one of the pre-defined profiles or the profiles you defined in the [Profile] tab of the printer properties dialog box is selected, you cannot delete it.

[Name]

Displays and allows you to change the name of the currently selected profile.



NOTE

When one of the pre-defined profiles or the profiles you defined in the [Profile] tab of the printer properties dialog box is selected, the name cannot be changed.

[Icon]

Displays and allows you to change the icon representing the currently selected profile.



NOTE

When one of the pre-defined profiles or the profiles you defined in the [Profile] tab of the printer properties dialog box is selected, the icon cannot be changed.

[Comment]

Displays and allows you to change the comment on the currently selected profile.



NOTE

When one of the pre-defined profiles or the profiles you defined in the [Profile] tab of the printer properties dialog box is selected, the comment cannot be changed.

[Import]

Enables you to import profile information from a file.

[Export]

Enables you to export the selected profile information to a file.



NOTE

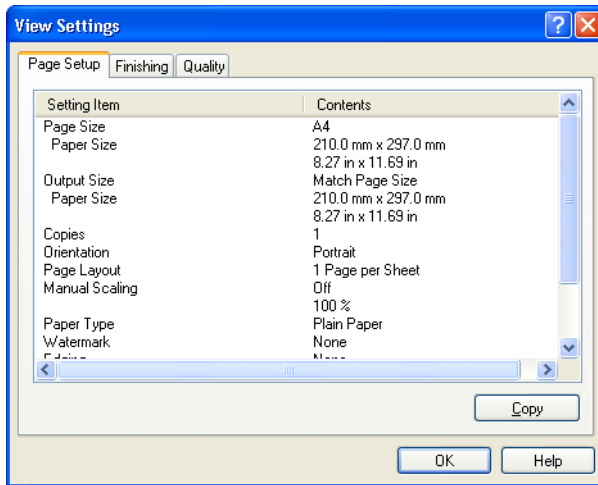
When one of the pre-defined profiles is selected, this button is disabled.

[Apply Settings from Application]

Applies the selected profile only to the settings other than [Paper Size], [Orientation] and [Copies].

■ View Settings

Clicking [View Settings] opens the [View Settings] dialog box. This dialog box displays the current settings in the [Page Setup], [Finishing], and [Quality] tab sheets.



[Copy]

Copies the contents of the current settings to the clipboard.

Using the Machine on Your Network

This section provides instructions for using the MF3110 machine on your network.

By setting your machine as a shared printer on your network, the network users can share the machine for printing. The print server and clients do not need to use the same operating system, and it is possible to print from a Windows 98/Me client to a Windows 2000/XP print server, or vice versa.

You can start printing simply by starting the server, even if the server was not running when the client was started.

If the server is running on Windows 2000/XP, you can print even if no one is logged into the server.

Setting the Machine as a Shared Printer

If you plan to share your MF3110 machine on a network, install the print server locally, then make the following settings. For more information, see your print server system documentation.

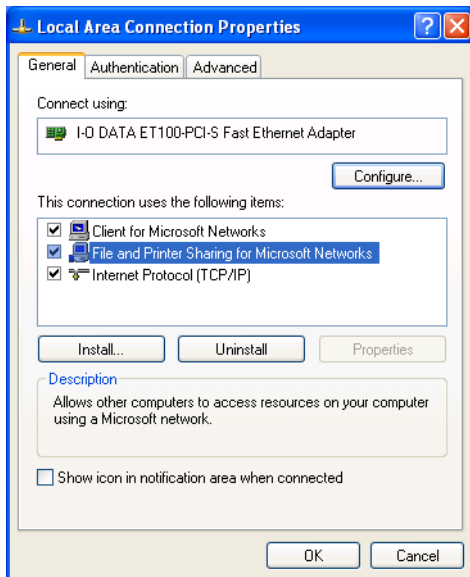
■ **Windows 2000/XP Server Settings**

The following is the procedure to make your machine available to your network users, under Windows 2000/XP.

■ ***Adding Server Service (Windows XP)***

- 1** Click [start] on the Windows task bar → select [Control Panel].
The [Control Panel] folder appears.
- 2** Click [Network and Internet Connections].
The [Network and Internet Connections] folder appears.
- 3** Click [Network Connections].
The [Network Connections] folder appears.
- 4** Right-click the [Local Area Connection] icon → select [Properties] from the pop-up menu.
The [Local Area Connection Properties] dialog box appears.

- 5 Select [File and Printer Sharing for Microsoft Networks] → click [OK].

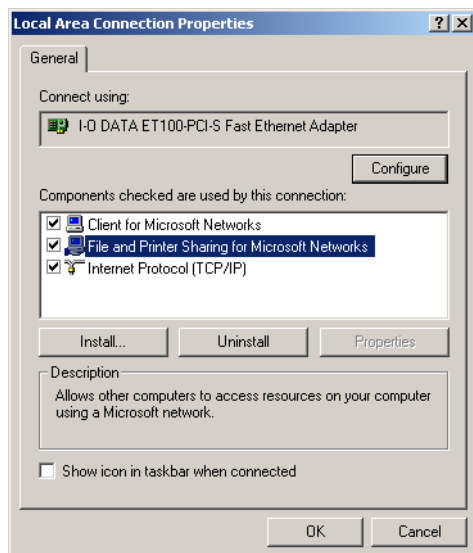


The server service is added.

■ Adding Server Service (Windows 2000)

- 1 Click [Start] on the Windows task bar → select [Settings] → [Network and Dial-up Connections].
The [Network and Dial-up Connections] folder appears.
- 2 Right-click the [Local Area Connection] icon → select [Properties] from the pop-up menu.
The [Local Area Connection Properties] dialog box appears.

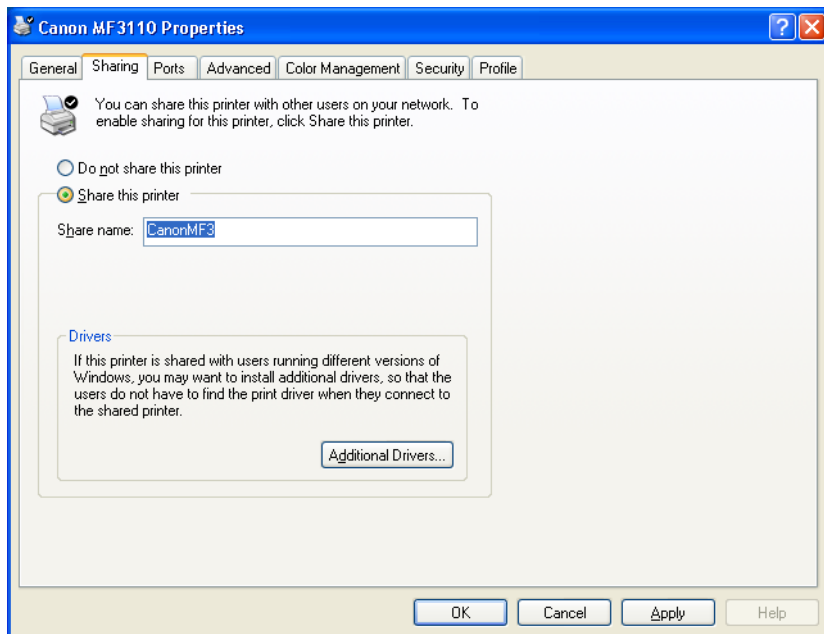
- 3** Select [File and Printer Sharing for Microsoft Networks] → click [OK].



The server service is added.

■ Setting Printer Sharing

- 1 Open the printer properties dialog box → select [Share this printer] (Windows 2000: [Shared as]) in the [Sharing] tab sheet.



NOTE

On how to open the printer properties dialog box, see "Changing Print Settings," on p. 2-2.

- 2 Enter a share name in the edit box as needed.

NOTE

Do not enter a space or special character in the [Share name] edit box.

- 3 Click [OK].

The printer driver icon changes to indicate sharing.

NOTE

Sharing settings may also be made during installation.

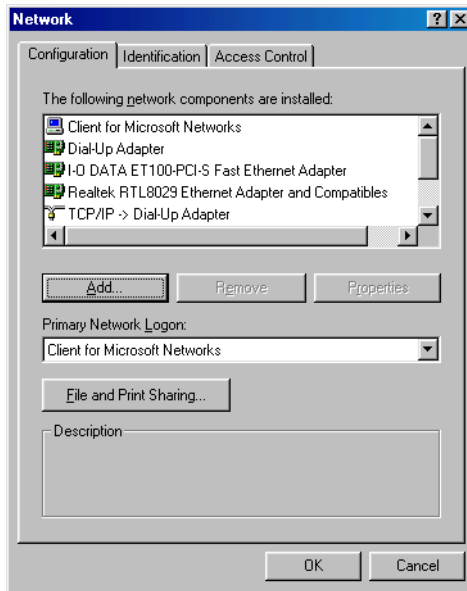
■ Windows 98/Me Server Settings

The following is the procedure to make your machine available to your network users, under Windows 98/Me.

The screen shots shown are from Windows 98.

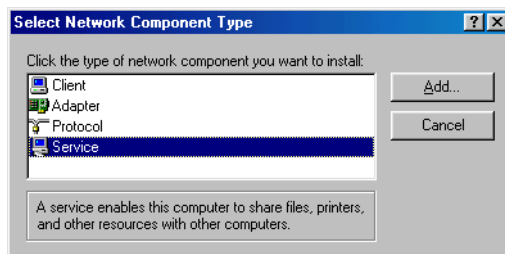
■ Adding Server Service

- 1 Click [Start] on the Windows task bar → select [Settings] → [Control Panel].
The [Control Panel] folder appears.
- 2 Double-click the [Network] icon.
The [Network] dialog box appears.
- 3 Click [Add] in the [Configuration] tab sheet.



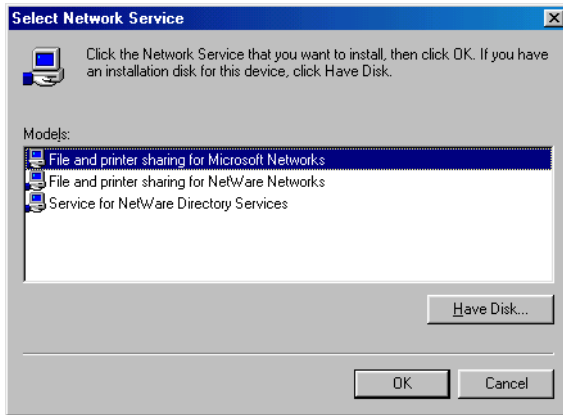
The [Select Network Component Type] dialog box appears.

- 4 Select [Service] → click [Add].

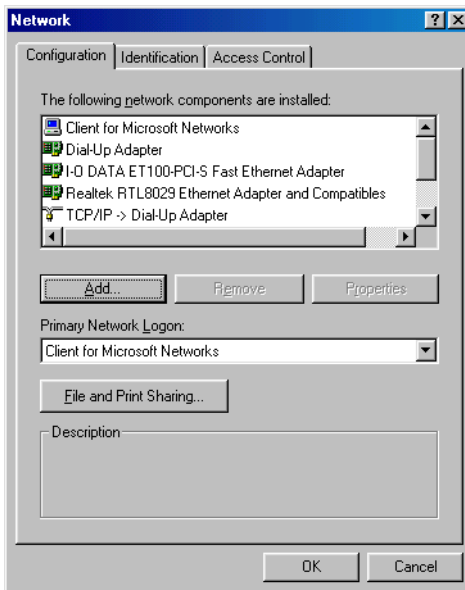


The [Select Network Service] dialog box appears.

- 5 Select [File and printer sharing for Microsoft Networks] → click [OK].

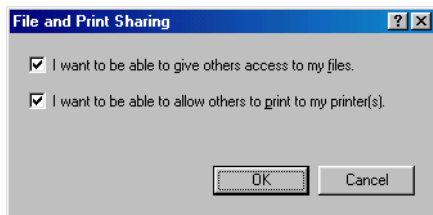


- 6 Click [File and Print Sharing].



The [File and Print Sharing] dialog box appears.

- 7 Select [I want to be able to allow others to print to my printer(s).] → click [OK].



- 8 Select the [Access Control] tab → [Share-level access control] or [User-level access control].



- 9 Click [OK].

The server service is added.

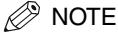
If the confirmation message dialog box appears, click [Yes] to restart your computer.

Using the Shared Printer on Your Network

When the MF3110 machine is already on your network and set as a shared printer, you can use it via network. The easiest way to make the machine available for your computer is using network download. If your operating system is Windows 2000/XP, you cannot download the driver from Windows 98/Me servers. In that case, use [Add Printer Wizard].

■ Network Download

The following is the procedure to connect to the shared printer on your network using network download.



NOTE

Windows 2000/XP clients cannot download the driver from Windows 98/Me servers.

- 1 Open Explorer → browse the network until you can see the icon of the shared printer.**
- 2 Double-click the machine icon, or drag the machine icon to your [Printers and Faxes] (Windows 98/Me/2000: [Printers]) folder.**
The [Add Printer Wizard] dialog box appears.
- 3 Follow the instructions on the screen to complete the installation.**

■ Add Printer Wizard (Windows 2000/XP)

The following is the procedure to connect to the shared printer on your network using Windows 2000/XP.



IMPORTANT

Installation in Windows 2000/XP needs to be done by a user with administrator privileges.

- 1 Open the [Printers and Faxes] (Windows 2000: [Printers]) folder.**
Click [start] on the Windows task bar → select [Printers and Faxes] (Windows 2000: [Start] → [Settings] → [Printers]).
- 2 Open the [Add Printer Wizard] dialog box.**
Click [Add a printer] in [Printer Tasks] (Windows 2000: double-click the [Add Printer] icon).
- 3 Click [Next].**
- 4 Select [A network printer, or a printer attached to another computer] (Windows 2000: [Network printer]) → click [Next].**
The [Specify a Printer] (Windows 2000: [Connect to Printer]) dialog box appears.
- 5 Select [Connect to this printer (or to browse for a printer, select this option and click Next)] (Windows 2000: [Type the printer name, or click Next to browse for a printer]) → enter the name of the printer you want to connect to → click [Next].**

If you do not know the name of the printer, click [Next] without entering the name to proceed to the [Browse for Printer] dialog box. In this dialog box, select the printer → click [OK].



NOTE

- If the printer name is invalid, it means the client cannot connect to the shared printer.
- If a suitable driver is not found, it probably means the server is a Windows 98/Me computer.

- 6** Follow the instructions on the screen to complete the installation.

■ Add Printer Wizard (Windows 98/Me)

The following is the procedure to connect to the shared printer on your network using Windows 98/Me [Add Printer Wizard].

The screen shots shown are from Windows 98.

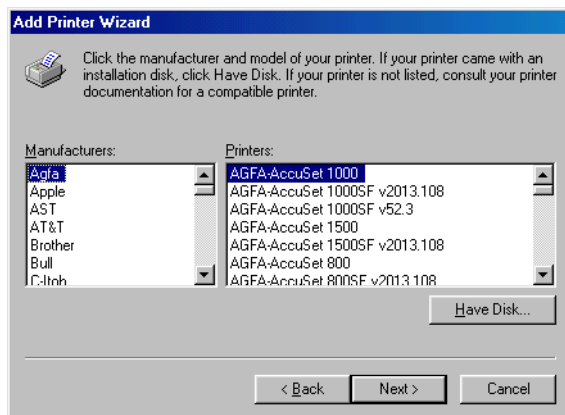
- 1** Click [Start] on the Windows task bar → select [Settings] → [Printers].
The [Printers] folder appears.
- 2** Double-click the [Add Printer] icon.
The [Add Printer Wizard] dialog box appears.
- 3** Click [Next].
- 4** Select [Network printer] → click [Next].
- 5** Enter the network path or print queue that you want to connect to, or select the location of the shared printer.
 - **To enter the location directly:**
 - ☐ Enter the path name or print queue in the edit box.
 - **To select the location:**
 - ☐ Click [Browse].
 - ☐ Select the location of the printer → click [OK].



NOTE

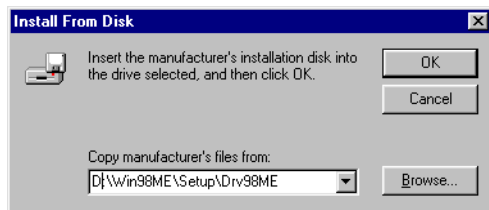
Depending on your network environment, the installation of the driver may be carried out automatically. In this case you need not perform steps 7 through 10 below.

- 6** Click [Next].
- 7** Click [Have Disk].



The [Install From Disk] dialog box appears.

8 Select the location containing the printer driver.



- **To specify in the default location:**

- ☐ Go to step 9.

- **To change the location:**

- ☐ Click [Browse].
- ☐ Select the location containing the printer driver → click [OK].

You can also enter the path name directly in the edit box.

9 Click [OK].

10 Enter the name of the printer you want to use → click [Next].

If you accept the default name, leave the edit box as it is → click [Next].



NOTE

If the connection fails, you will be able to install the printer but you will not be able to use the printer until it comes back online.

11 Follow the instructions on the screen to complete the installation.

This chapter explains the procedure to scan documents to your computer.

Scanning with [Start] on the Machine

By pressing [SCAN] → [Start] on the operation panel of the machine, you can scan documents to your computer.

Pressing [SCAN] → [Start] has the same effect as clicking [Save] in the MF Toolbox.

You can change the settings for [Save], or set up a button other than [Save] to perform the same operation. (See "Setting the Scanning Function for [Start]," on p. 3-1.)

1 Place the document face-down on the platen glass.

2 Press [SCAN] → [Start] on the machine.

If you are asked to select a program to launch, select "MF Toolbox Ver4.7."

Scanning starts.

The MF Toolbox and the [Save] dialog box will open, but the document will be scanned without pressing [Start] in the [Save] dialog box.

The scanned document will be processed according to your settings.

When you use [Start] for the first time, a folder with the scanning date will be created in the [My Pictures] folder in the [My Documents] folder, and your document will be saved in this folder. If there is no [My Pictures] folder, the folder with the scanning date will be created in the [My Documents] folder and your document will be saved in this folder.

Setting the Scanning Function for [Start]


When you scan for the first time using [Start] on the machine, scanning will occur in the same way as when you click [Save] in the MF Toolbox.

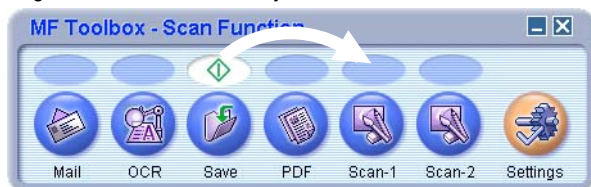
Setting Up [Start] to Operate in a Different Way from [Save]


1 On the Windows desktop, double-click [Canon MF Toolbox 4.7].

Alternatively, on the Windows desktop, click [start] → [(All) Programs] → [Canon] → [MF Toolbox 4.7] → [Toolbox 4.7]. The MF Toolbox will open.



- 2 Drag the  mark over the button you want to select.

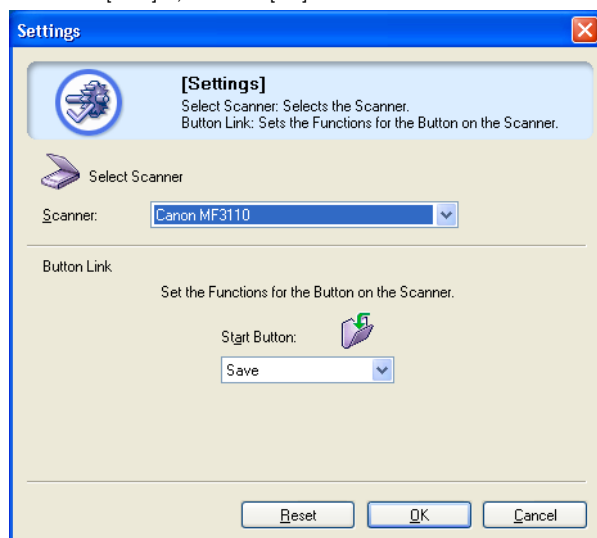


The  mark will be displayed above the button you select.



Setting Up [Start] in the [Settings] Dialog Box

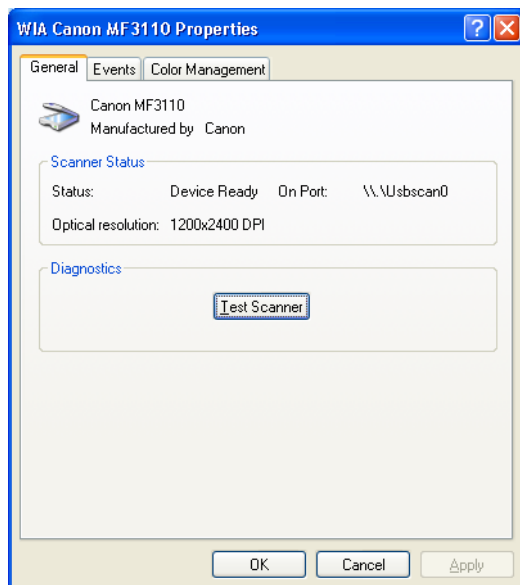
In the MF Toolbox, click [Settings]. In the [Settings] dialog box, in [Start Button], select the button you want to link [Start] to, then click [OK].



You can also set up [Start] in the [Scanners and Cameras] folder (see p. 3-3).

Setting Up [Start] in the [Scanners and Cameras] Folder (Windows2000: the [Scanners and Cameras Properties] Dialog Box)

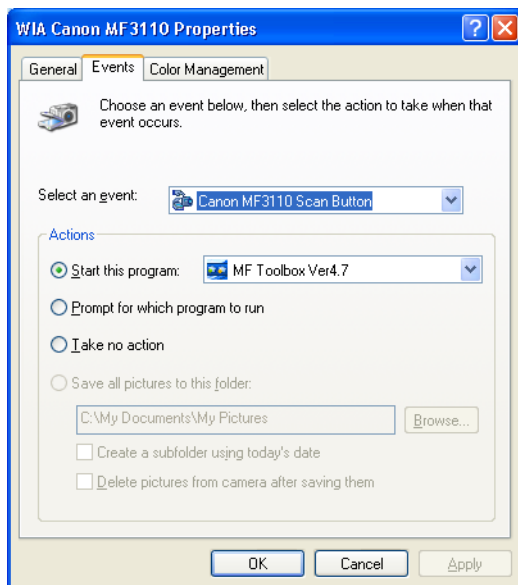
- 1 Open the [Scanners and Cameras] folder (Windows 2000: the [Scanners and Cameras Properties] dialog box).
Click [start] on the Windows task bar, select [Control Panel] → [Printers and Other Hardware] → [Scanners and Cameras] (Windows 98/Me/2000: [Settings] → [Control Panel] → double-click the [Scanners and Cameras] icon).
- 2 Click the corresponding scanner driver name or icon.
- 3 From the [File] menu, click [Properties]. (Windows 98/Me/2000: Click [Properties].)



4 Specify an action for [Start].

- On Windows XP:

- Select the [Events] tab → select [Canon MF3110 Scan Button] in the [Select an event] pull-down list → select the operation for [Start] in [Actions] → click [OK].



- On Windows 98/2000/Me:

- Select the [Events] tab → select [Canon MF3110 Scan Button] in the [Scanner events] pull-down list → select the operation for [Start] in [Send to this application] → click [OK].



NOTE

If the settings you specified in the scanner property dialog box do not work immediately, disconnect and reconnect the USB cable, or restart your computer.

Scanning with the MF Toolbox

You can scan a document using the buttons on the MF Toolbox.

1 Place the document face-down on the platen glass.

2 On the Windows desktop, double-click [Canon MF Toolbox 4.7].

Alternatively, on the Windows desktop, click [start] → [(All) Programs] → [Canon] → [MF Toolbox 4.7] → [Toolbox 4.7]. The MF Toolbox will open.

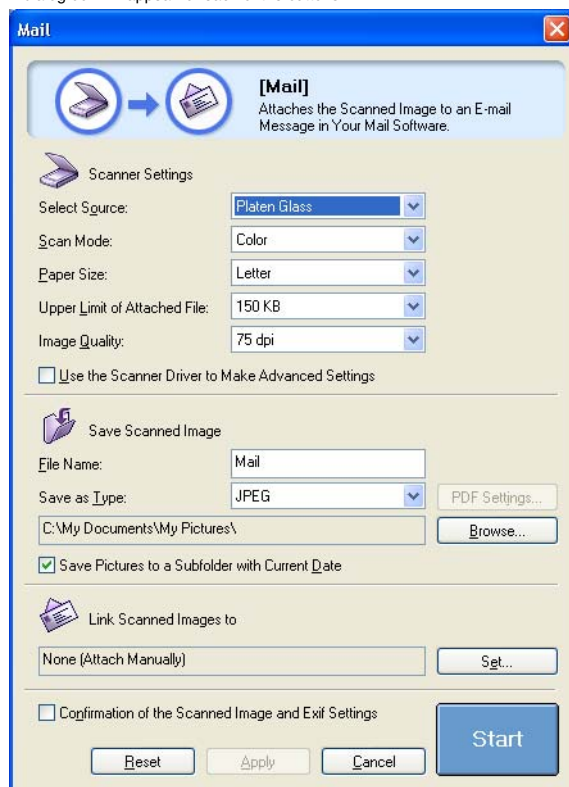


[MF Toolbox] buttons

3 Click one of the scanning buttons below.

[Mail]	The document will be scanned and attached to an e-mail message in your e-mail application.
[OCR]	The text will be scanned and read by the OCR software.
[Save]	The document will be scanned and saved.
[PDF]	The text will be scanned and saved as a PDF file.
[Scan-1], [Scan-2]	The text will be scanned and appear in the registered application. You can change the button name by directly entering a new name over the button name. The name can be up to 8 characters long.

A dialog box will appear for each of the buttons.



Example: [Mail] dialog box

4 Adjust the settings.

For details, see "MF Toolbox Settings," on p. 3-8.

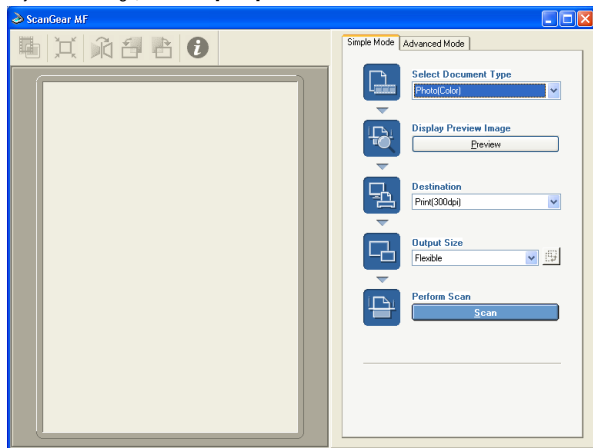
If you clicked a button other than [Mail], [Save] or [PDF] and no application appears in [Link Scanned Images to], select an application.

If you want to keep the same settings for future scans, click [Apply] before clicking [Start].

5 Click [Start].

If you checked the [Use the Scanner Driver to Make Advanced Settings] checkbox in step 4, the [ScanGear MF] dialog box will appear.

Adjust the settings, then click [Scan].



[ScanGear MF] dialog box

For details, see "Setting Preferences and Scanning with ScanGear MF," on p. 3-14.

Scanning starts.

If you clicked [Mail], [Save] or [PDF] in step 3, a folder with the scanning date will be created in the [My Pictures] folder in the [My Documents] folder, and your document will be saved in this folder. If there is no [My Pictures] folder, the folder with the scanning date will be created in the [My Documents] folder and your document saved in this folder.

If you clicked [Mail], [OCR], [PDF], [Scan-1], or [Scan-2] in step 3, the scanned image will be displayed in the application after scanning. Send the e-mail message or perform OCR conversion. (The scanned image will not be displayed if you have not installed the applications on the MF3110 Setup CD-ROM or if you have not set the [Link Scanned Images to] setting.)

When the applications in the MF3110 Setup CD-ROM are installed, they will be registered in the MF Toolbox buttons.

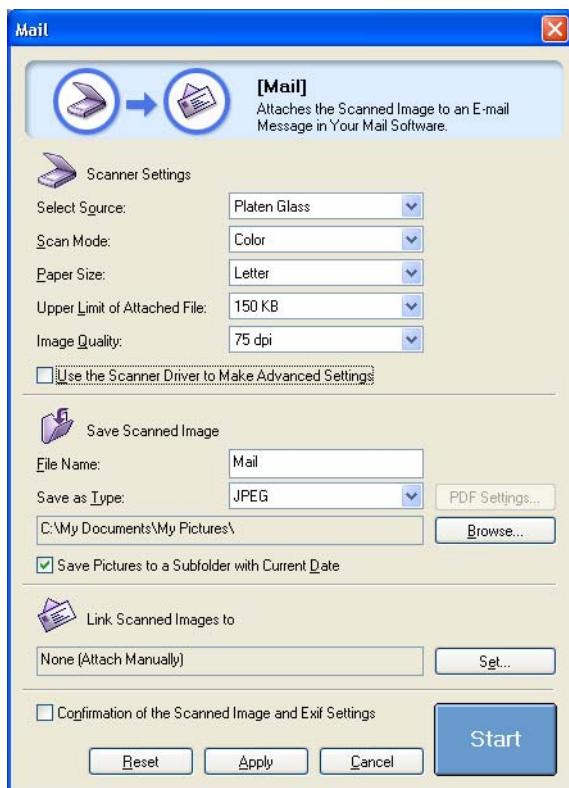
[OCR] ScanSoft OmniPage

[PDF] Presto! PageManager



NOTE

If white lines appear on one edge of the scanned image, check that the document is correctly placed on the platen glass. A document should be placed approximately 3 mm from the front edge (i.e., the edge closest to the control panel) of the platen glass.



Example: [Mail] dialog box

Scanner Settings

You can specify the scanning mode, scanning resolution, document size, and file size of the scanned image. You can also select to make advanced settings using the ScanGear MF.

■ [Select Source]

This setting is not available for this model. ([Platen Glass] is automatically selected.)

■ [Scan Mode]

Selects the scan mode. The scan modes you can select differ depending on the MF Toolbox button you press.

[Black and White]	Scans document as a black and white image.
[Grayscale]	Scans document as a grayscale image (similar to a monochrome picture).
[Color]	Scans document as a color image.
[Color (Magazine)]	Scans document as a color image with the [Descrreen] function set to [On]. The [Descrreen] function is designed to reduce as much as possible the distorted pattern (moire) which occasionally occurs when scanning printed materials. The scanning of a document will take longer if you use this function.

■ [Image Quality]

Selects the scan quality (resolution).

When scanning using the [Mail] button, the resolution you can select will depend on your setting in [Upper Limit of Attached File].

■ [Paper Size]

Selects the size of the document you will scan.

If you wish to specify the width and height with a value, select [Custom] to display the [Paper Size Settings] dialog box. Select the [Unit], enter the [Width] and [Height] → click [OK].

■ [Upper Limit of Attached File]

Selects an approximate upper size limit (after compression) for the image you will send. (Depending on the image, some file sizes after compression may be larger than the value set.)

For an ordinary mail message, a file size of [150 KB] is recommended.

You cannot select set this item when [PDF] is selected in [Save as Type].

■ [Use the Scanner Driver to Make Advanced Settings]

If you check this checkbox and click [Start], the ScanGear MF dialog box will appear and you can make advanced settings for scanning.

If you do not check this checkbox, scanning will begin immediately with the settings displayed.

This option is not available when scanning using the [OCR] button.

Save Scanned Image

You can specify the file name, file format, and location to save the scanned image. When you select [PDF] as file format, you can also perform detailed settings for the PDF file.

■ [File Name]

Enter a file name for the scanned image.

If you try to save another file with the same name, four digits starting from 0001 will be attached after the file name.

■ [Save as Type]

[BMP]	Bitmap format.
[JPEG]	JPEG format. Select for grayscale or color images only.
[TIFF]	TIFF format.
[PDF]	PDF format. You can make advanced settings with the [PDF Settings]. For details on [PDF Settings] dialog box, see "Creating One PDF File from Two or more Pages," on p. 3-12.

The type of file which can be saved with each button is shown below.

	BMP	JPEG	TIFF	PDF
[Mail]	–	○	–	○
[OCR]	○	–	○	–
[Save]	○	○	○	○
[PDF]	–	–	–	○
[Scan-1], [Scan-2]	○	○	○	–

If you select [PDF] in [Save as Type], depending on the output settings in the Advanced Mode, an error message may appear indicating that the image size is too large. In such cases, reduce the [Output Size] and/or [Output Resolution] under [Output Settings] to reduce the [Data Size] of the scanned file.

If you select [JPEG] in [Save as Type] and then select [Newspaper (B&W)] in ScanGear MF Simple Mode or [Black and White] in ScanGear MF Advanced Mode, the document will still be saved in grayscale.

To change the location to save the scanned images, click [Browse] → select a folder → click [OK].

When you scan for the first time, a folder with the scanning date will be created in the [My Pictures] folder in the [My Documents] folder, and your document will be saved in this folder. If there is no [My Pictures] folder, a folder with the scanning date will be created in the [My Documents] folder and your document saved in this folder.

■ [Save Pictures to a Subfolder with Current Date]

Check this checkbox to create a folder with current date (e.g. 2004-12-31) in the specified location and save the scanned images in this folder.

Link Scanned Images to

You can specify an application to be used to display the scanned image. If no name is displayed or you wish to change the application, click [Set] → select the application you wish to use → click [Open].

If the name of the application you wish to use does not appear for the [Mail] button, select [None (Attach Manually)]. In this case, you must open the image file in the application and attach the file manually.

The software is compatible with the e-mail software such as Outlook Express, Microsoft Outlook, EUDORA and Netscape Messenger.

If you do not want to select an application, click [Link Deletion] (available only with [OCR], [PDF], and [Scan] buttons). When asked to confirm, click [Yes].

Confirmation of the Scanned Image and Exif Settings (Confirm Scanned Image)

You can preview the scanned images as thumbnail images, and specify the file type and location to save them. You cannot use this function when scanning with the [OCR] button, and for the [PDF] button, only the confirmation of the scanned image is available.

Check the [Confirmation of the Scanned Image and Exif Settings] checkbox (for the [PDF] button, [Confirm Scanned Image] checkbox) → click [Start]. When the scanning is complete, the thumbnail of the scanned image will be displayed. Confirm the thumbnail image → specify the file type and location → press [Save] or [Forward].

[Save Scanned Image to]	Specifies the location to save the scanned image. Specifies the file type to save the scanned image. You can select from [JPEG/EXIF], [BMP], [TIFF], or [PDF]. The available file types are the same as those listed in [Save as Type] of the [Save Scanned Image to]. If you select [JPEG/EXIF], you can set the Exif information using [Exif Settings] dialog box (see "Exif Settings" below. If you select [PDF], you can make advanced settings with the [PDF Settings] (see "Creating One PDF File from Two or more Pages," on p. 3-12).
[Save as Type]	
[Save Pictures to a Subfolder with Current Date]	Check this checkbox to create a folder with current date inside the specified location and save the scanned images in this folder.
[Add]	Press to scan other images to preview as thumbnails and save or forward all the scanned images at once.
[Forward]	Press to forward the scanned images to the application you specified in the [Link Scanned Images to] settings. When scanning with the [Mail] button and [None (Attach Manually)] is selected for [Link Scanned Images to], pressing [Forward] opens the folder where the scanned image is saved.
[Save]	Press to save the scanned images in the specified location. This button appears instead of the [Forward] button when scanning with the [Save] button.

Exif Settings

You can attach extra information in the EXIF format, such as the description of the image, the date the image was scanned, etc., to the JPEG files. Select a scanned image from the pull-down list to view and add information for the image.

[Basic information]	Displays the information automatically acquired by scanning.
[Advanced information]	Displays the extra information you enter. Check the checkbox of the item you want to enter → specify a value → click [Apply].



NOTE

You can enter only ASCII characters in "Description" and "Artist."

[Apply the Same Setting of Input Items Automatically]

	Check this checkbox to use the same values you have specified in the previous scanning operation.
[OK]	Press to exit the Exif Settings.

Scanning an Image from an Application

You can scan an image from a TWAIN- or WIA- (Windows XP only) compliant application and use the image in that application.

This procedure varies depending on the application. The following is only one example. For the correct procedure, refer to the documentation of the application you are using.

1 Place the document face-down on the platen glass.

2 Open the application from which you will scan the document.

3 Select the command to scan.

In most cases, select [Import] or [Acquire image] etc. from the [File] menu.

4 Select the scanner driver to be used.

With Windows XP, you can use the ScanGear MF or the WIA driver as the scanner driver.

To use ScanGear MF, select [Canon MF3110].

To use the WIA driver, select [WIA-Canon MF3110].

5 Specify the scanner settings → click [Scan].

For details, see "Setting Preferences and Scanning with ScanGear MF," on p. 3-14, or "Scanning with the WIA Driver (Windows XP Only)," on p. 3-38.

When scanning is completed, the scanned image will appear in the application's display area.



NOTE

If white lines appear on one edge of the scanned image, check that the document is correctly placed on the platen glass. A document should be placed approximately 3 mm from the front edge (i.e., the edge closest to the control panel) of the platen glass.

Creating One PDF File from Two or more Pages

You can scan two or more pages and make them into one PDF file.

1 Place the document face-down on the platen glass.

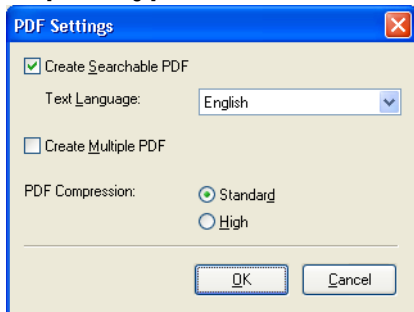
2 On the Windows desktop, double-click [Canon MF Toolbox 4.7].

Alternatively, on the Windows desktop, click [start] → [(All) Programs] → [Canon] → [MF Toolbox 4.7] → [Toolbox 4.7]. The MF Toolbox will open.

3 Click [PDF].

If necessary, adjust any settings.

4 Click [PDF Settings].



5 Check the [Create Multiple PDF] checkbox to create one PDF file by scanning two or more pages.

6 Adjust the following settings if necessary → click [OK].

[Create Searchable PDF]

Click to convert the characters in the document to text data and make the document searchable with simple keywords. However, all the characters in the document may not be accurately recognized. In [Text Language], select [English]. In [Scanner Settings], in [Image Quality], select [300 dpi].

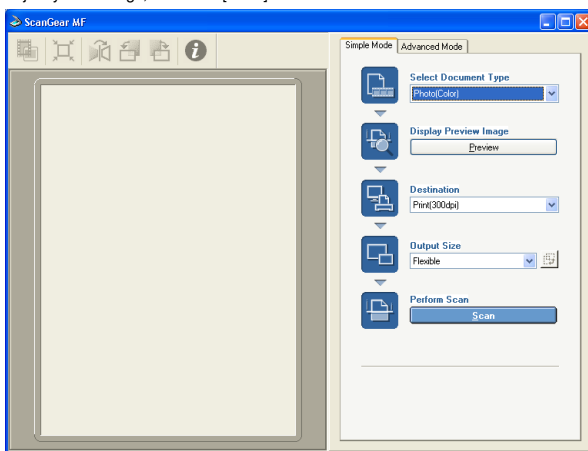
[PDF Compression]

Select [High] for images such as photos or illustrations to be further compressed, reducing the file size.

7 Click [Start].

The [ScanGear MF] dialog box will open if you selected [Use the Scanner Driver to Make Advanced Settings] in step 3.

Adjust your settings, then click [Scan].



[ScanGear MF] dialog box

For settings, see "Setting Preferences and Scanning with ScanGear MF," on p. 3-14.

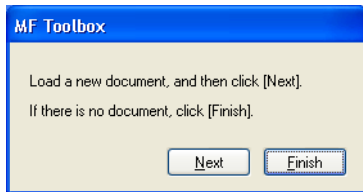
Scanning starts.



NOTE

If white lines appear on one edge of the scanned image, check that the document is correctly placed on the platen glass. A document should be placed approximately 3 mm from the front edge (i.e., the edge closest to the control panel) of the platen glass.

If you are scanning using the platen glass, the following dialog box appears as each page is scanned.



To continue to scan, place the next page and click [Next]. When scanning is completed, click [Finish].

A folder with the scanning date will be created in the [My Pictures] folder in the [My Documents] folder, and your document will be saved in this folder. If there is no [My Pictures] folder, the folder with the scanning date will be created in the [My Documents] folder and your document saved in this folder.

For text documents or black-and-white documents, it is recommended you select either [Black and White] or [Grayscale] in [Scan Mode].

If making a Multiple PDF with color documents ([Image Quality] set to [300 dpi]), it is recommended that the PDF have fewer than 20 pages.

Setting Preferences and Scanning with ScanGear MF

With ScanGear MF, you can review with the preview image (provisional scan) how the final image will be scanned and make detailed adjustments for the size and color of the image. If the preview image is satisfactory, you can then scan the document properly.

If you wish to make settings with ScanGear MF when scanning a document, you can either check the [Use the Scanner Driver to Make Advanced Settings] checkbox in the MF Toolbox before scanning, or scan from an application.



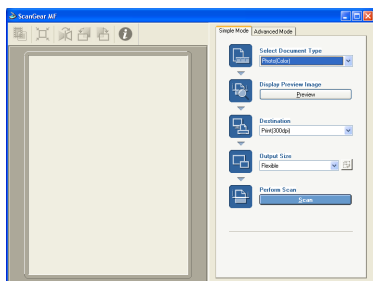
NOTE

If you are scanning from an application in Windows XP, select ScanGear MF in the application before scanning. For details, see "Scanning an Image from an Application," on p. 3-12.

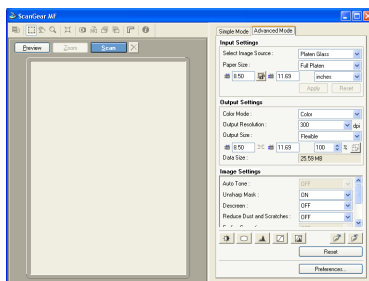
Switching between Simple Mode and Advanced Mode

ScanGear MF has two modes: [Simple Mode] and [Advanced Mode]. With [Advanced Mode] you can perform detailed settings such as resolution and contrast.

To switch between two modes, click the corresponding tab.

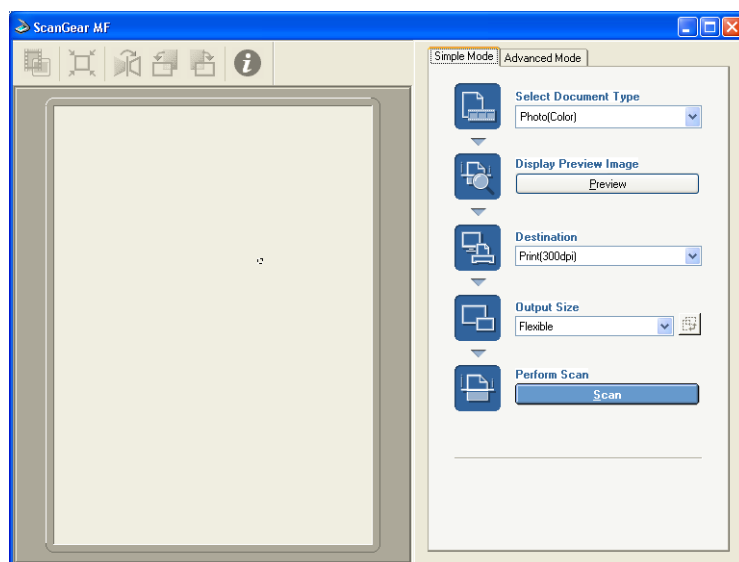


[Simple Mode] dialog box



[Advanced Mode] dialog box

Using Simple Mode



- 1 Place the document face-down on the platen glass.

2 In [Select Document Type], select the document type.

[Photo (Color)]	To scan color photos (300dpi).
[Magazine (Color)]	To scan color magazines (150dpi, with the Descreen function).
[Newspaper (B & W)]	To scan text and line drawings (black and white, 300dpi).
[Document (Grayscale)]	To scan color image or text in monochrome. Especially appropriate, for scanning high-resolution monochrome image (300dpi).



NOTE

If you select a document type other than [Newspaper (B & W)], there will be automatic color correction. To turn off automatic color correction, in Advanced Mode, click [Preferences] → [Color Settings] tab → clear [Always Execute the Auto Tone].

3 To see a preview image (provisional scan), click [Preview].

A preview of the document will be scanned and appear in the preview window.


4 Select the destination of the scanned image.

You can select from [Print (300 dpi)], [Image Display (150 dpi)], or [OCR (300 dpi)], depending on the document type you select in step 2.

For details on this setting, see "Determining Resolution," on p. 3-37.

5 Select the output size of the scanned image depending on the destination you selected in step 4.

If you select [Add/Delete], you can add or delete the custom output size. For details on setting, see "Add/Delete the Output Size," on p. 3-17.

Click  to switch the orientation of the output size (landscape or portrait).

6 Click [Scan].

Scanning starts.

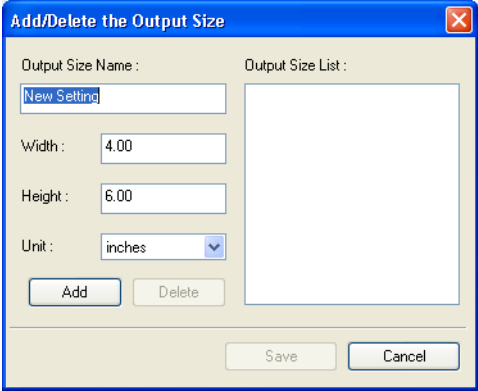


NOTE

If white lines appear on one edge of the scanned image, check that the document is correctly placed on the platen glass. A document should be placed approximately 3 mm from the front edge (i.e., the edge closest to the control panel) of the platen glass.

■ **Add/Delete the Output Size**

Selecting [Add/Delete] for the [Output Size] in the [Simple Mode] tab sheet opens the [Add/Delete the Output Size] dialog box. In this dialog box, you can add or delete the custom output size.



[Output Size Name]	Specifies the output size name you want to register.
[Width]	Specifies the width of the output size.
[Height]	Specifies the height of the output size.
[Unit]	Selects the unit of measurement for the output size.
[Add]	Adds the output size to the [Output Size List].
[Delete]	Deletes the selected output size from the [Output Size List].

■ **Simple Mode Toolbar**

With the Simple Mode Toolbar, you can make adjustments to the preview image and also select a part of the image displayed.



	This button is disabled for this model.
(Auto Crop)	Crops the image border automatically. For details, see "Advanced Mode - Specifying the Parameters of a Scan," on p. 3-20.
(Flip)	Flips the scanned image horizontally.
(Left Rotate)	Rotates the scanned image 90 degrees left.
(Right Rotate)	Rotates the scanned image 90 degrees right.
(Information)	Lists the scanning information.

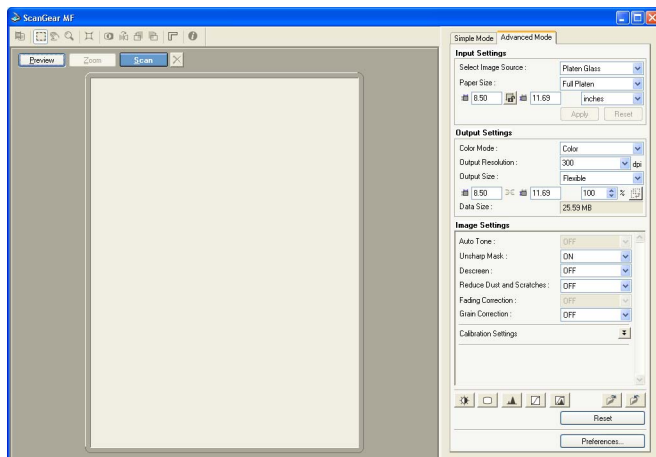
■ To Detach and Move the Toolbar

To detach the toolbar from the ScanGear MF dialog box, click and hold on the edge of the toolbar, then drag the Toolbar. It will return to its original position if you double-click on the title of the toolbar.

The toolbar will adhere to a position if you drag it to the left or right of the preview area or the bottom frame.

Using Advanced Mode


In Advanced Mode, you can adjust settings such as brightness and contrast to the preview.



- 1 Place the document face-down on the platen glass.
- 2 Select settings for [Input Settings], [Output Settings] and [Image Settings], and adjust the color settings.
For details on the settings, see "Advanced Mode Settings," on p. 3-21.

- 3 Click [Preview].

NOTE

- Selecting the range in the preview window and clicking [Zoom] reloads the selected image to enlarge it. When enlarged image is displayed, the [Zoom] button changes to the [Undo] button. Clicking [Undo] displays the image in normal size.
- To delete the displayed preview image, click  → when asked to confirm, click [OK].

- 4 If you want to scan only part of the document, specify the parameters.
For details, see "Advanced Mode - Specifying the Parameters of a Scan," on p. 3-20.

- 5 Click [Scan].
Scanning starts.

NOTE

If white lines appear on one edge of the scanned image, check that the document is correctly placed on the platen glass. A document should be placed approximately 3 mm from the front edge (i.e., the edge closest to the control panel) of the platen glass.

■ **Advanced Mode Toolbar**

With the Advanced Mode Toolbar, you can make adjustments to the preview image and also select a part of the image displayed.



(Crop)

This button is disabled for this model.

Specifies the parameter of a scan. For details, see "Advanced Mode - Specifying the Parameters of a Scan," on p. 3-20.



(Move)

Moves the image. If the enlarged image is too large to fit on the screen, on the Toolbar, click . Then drag the image across the screen until the part you want to see is displayed. You can move the image in the same way with the scroll bars.



(Zoom)

Enlarges or reduces the preview image. Click this button on the toolbar → click on the image to enlarge, or right-click on the image to reduce.



(Auto Crop)

Crops the image border automatically. For details, see "Advanced Mode - Specifying the Parameters of a Scan," on p. 3-20.



(Invert)

Inverts the color in the image.



(Mirror)

Flips the scanned image horizontally.



(Left Rotate)

Rotates the scanned image 90 degrees left.



(Right Rotate)

Rotates the scanned image 90 degrees right.



(Rulers)

Shows the ruler at the upper and left edges of the preview to make accurate measurements.



(Information)

Lists the scanning information.

■ **To Detach and Move the Toolbar**

To detach the Toolbar from the ScanGear MF dialog box, click and hold on the edge of the Toolbar, then drag the Toolbar. It will return to its original position if you double-click on the title of the Toolbar.


The Toolbar will adhere to a position if you drag it to the left or right of the preview area or the bottom frame.

Advanced Mode - Specifying the Parameters of a Scan


You can specify the parameters of a scan by selecting a part of the image. When you scan again, only the part of the image you have specified is scanned.

You can specify the parameters of a scan with one of the following methods.

■ To Select the Parameters of a Scan Automatically


After previewing, on the Toolbar, click . Clicking this button allows you to gradually crop off the image outside the borders detected in the preview image.

■ To Specify the Parameters of a Scan

1 To maintain the current width and height proportions set for the image even after selecting the parameters of the scan, click  in the [Input Settings].

2 Do one of the following.




● Specify by dragging

- ☐ Click . Then click and drag from the upper left corner of the parameter you wish to specify to the lower right of the parameter. To adjust even further, drag the corner or border of the selected parameters.

● Specify size

- ☐ In  (Width) and  (Height), enter the parameters you want.

NOTE

If you clicked  in step 1, entering either  (Width) or  (Height) automatically decides the other parameter.

3 To move the crop border you have selected, place the mouse pointer inside the crop border, then drag.

4 To preview the image, click [Preview].

To delete the settings, click on an area outside of the crop border.

Advanced Mode Settings

Simple Mode | **Advanced Mode**

Input Settings

Select Image Source : Platen Glass

Paper Size : Full Platen

8.50 11.69 inches

Apply Reset

Output Settings

Color Mode : Color

Output Resolution : 300 dpi

Output Size : Flexible

8.50 11.69 100 %

Data Size : 25.59 MB

Image Settings

Auto Tone : ON

Unsharp Mask : ON

Descreen : OFF

Reduce Dust and Scratches : OFF

Fading Correction : OFF

Grain Correction : OFF

Calibration Settings

Calibration : Execute

Execute at Every Scan : OFF

Reset

Preferences...

■ Input Settings

■ [Select Image Source]



This setting is not available for this model. ([Platen Glass] is automatically selected.)

■ [Paper Size]

Selects the size of the document to be scanned. The preview area size (height-to-width ratio) will change to the paper size you selected.

Change this setting to set up the machine not to scan beyond the parameters of the scan when previewing or if you are scanning without specifying the parameters of the scan. If you do not know the size of the document, select [Full Platen] or a large size. You can specify the parameters after previewing. If you change [Paper Size] setting after previewing, the preview image will be deleted.

■ **Input Size**

You can specify the width and height of the parameters of the scan by entering a value. After entering the value, press the Enter key, and the size of the cropping frame will change. Click  to change the icon to  and maintain the width and height proportions of the image.



IMPORTANT

- *Some applications have a limit to the amount of image data they can receive. If the parameters of a scan contain more than 21,000 x 30,000 pixels, the image will not be received.*
- *The values you can enter will be within the parameters of the document size you have selected.*
- *Minimum parameters of an image with [Output Resolution] is set to [600] dpi are 96 x 96 pixels.*

■ **Output Settings**

■ **[Color Mode]**

Selects the type of document and the way in which it will be scanned.



[Black and White]	Select this mode when outputting photos and other documents to monochrome printer. The image is displayed in black and white. The contrast in the image is divided at certain levels (threshold values) into black and white and is displayed in two colors. Threshold can be set on the [Halftone] button.
[Grayscale]	Select this mode to scan black and white photos or monochrome images. The image is expressed in a 0-256 scale of black and white.
[Color]	Select this mode to scan color documents. The image is expressed in 256 levels (8 bit) of R(ed), G(reen) and B(lue).
[Text Enhanced]	Select this mode to scan texts crisply, particularly to process it with OCR software. The image is displayed in black and white. The document is scanned in grayscale and then converted to black and white, therefore takes longer than the [Black and White] setting.





■ **[Output Resolution]**


Selects the resolution for the scan. If you have selected [Color] for [Color Mode], either click or type a resolution between 25-2400 dpi (in 1 dpi increments), or enter one of the values 4800, 7200 or 9600 dpi. If you have selected [Black and White], [Grayscale], or [Text Enhanced], either click or type a resolution between 25-600 dpi (in 1 dpi increments). For details, see "Determining Resolution," on p. 3-37.

■ [Output Size]

For setting the print size (output size) of the scanning parameters you have specified.

Specify by entering a value in either  (Width),  (Height) or [%] (Scale), or click a [%] (Scale) value. After adjusting the settings, either click on another area or press the Enter key, and the other values linked to the input values will change. Even if you change these settings, the size of the cropping frame and the setting for [Output Resolution] will not change. The resolution when you actually scan will change in accordance with the value entered in [%] (Scale).

The ratio of  (Width) and  (Height) is linked to  (Width) and  (Height) in [Input Size]. You can make settings for [%] (Scale) between 25 and 3200 in increments of 1%. [%] (Scale) is fixed to 100% if 4800, 7200 or 9600 dpi is entered in [Output Resolution].

Click  to switch the orientation of the output size (landscape or portrait). This button is disabled when you select [Flexible] for [Output Size].

■ [Data Size]

Shows the data size of the scanned image according to your settings.

■ Image Settings

■ [Auto Tone]

Set to [ON] to automatically adjust the tone of the image. The results of tone adjustment are reflected in the whole image and when the image is actually scanned. You cannot apply this setting if the preview image is not displayed. The default setting applies auto tone adjustment to the cropped image when previewing the image.

To view the preview image without auto tone adjustment, select [OFF].



NOTE

This setting is not available when [Fading Correction] is turned on.

■ [Unsharp Mask]

Set to [ON] to emphasize and make sharper the outline of an image. This setting is selected by default. It is effective for scanning photos etc., which have a soft focus.

■ [Descreen]

Set to [ON] when scanning printed photographs and pictures. The default setting is [OFF].



IMPORTANT

- You cannot set [Descreen] to [ON] if [Black and White] or [Text Enhanced] is selected in [Color Mode].
- Even if [Descreen] is set to [ON], some moire effect may remain if [Unsharp Mask] is also set to [ON]. In this case, disable [Unsharp Mask].
- [Descreen] cannot be set to [ON] when scanning from an application which will not display the ScanGear MF dialog box. If you are scanning from the MF Toolbox without using ScanGear MF, select [Color (Magazine)] in [Scan Mode] to activate [Descreen].

NOTE

- Printed photographs and pictures are displayed as a collection of fine dots. If you scan without descreen, the dots may interfere with each other and cause an unevenness of gradation and a striped pattern in the image. [Descreen] is the function for reducing this moire effect.
- Selecting [Magazine (Color)] in [Select Document Type] in Simple Mode has the same effect as selecting [Descreen] in Advanced Mode.

■ [Reduce Dust and Scratches]

Scanned photos may contain white dots caused by dust and scratches. This setting reduces the dust and scratches on photos. The default setting is [OFF].

[OFF]	No reduction of dust and scratches will be made.
[Low]	Reduces small dust and scratch marks. With this setting, large dust or scratch marks may remain.
[Medium]	Normally this setting is recommended.
[High]	Reduces large dust and scratch marks but evidence of the reduction process may remain and may also remove delicate parts of the image.

IMPORTANT

- For scanning printed materials, the [OFF] setting is recommended.
- If [Output Resolution] is set to [600] dpi or less and [Descreen] is set to [ON], you cannot set [Reduce Dust and Scratches] to [ON]. (If you set [Output Resolution] to [601] dpi or more, the [Descreen] setting will be automatically disabled and you can then set [Reduce Dust and Scratches] to [ON].)
- This setting may not be effective for some types of photos.

■ [Fading Correction]

The fading correction feature rebuilds the color quality that has faded over time. It also increases saturation of dull-colored originals to reproduce a vivid image. The default setting is [OFF].

[OFF]	No fading correction will be made.
[Low]	Corrects slightly faded images.
[Medium]	Normally this setting is recommended.
[High]	Corrects highly faded images, but it may change the tone of the image.

NOTE

- This setting is not available when [Canon ColorGear] is selected in the [Color Settings] tab in the [Preferences] dialog box.
- This setting is reflected also in the preview image.
- This setting is available when [Color] is selected in [Color Mode].
- You cannot apply this setting when the preview image is not displayed.
- If you set [Fading Correction] to [Low], [Medium], or [High], scanning may take more time.
- The fading correction may not work when the scanning area is too small.

■ [Grain Correction]

The grain correction feature smoothes out the film grain of the image recorded on fast film. The result is smoother tones and higher overall quality. The default setting is [OFF].


[OFF]	No grain correction will be made.
[Low]	Select this setting when the grain in the picture is not so notable.
[Medium]	Normally this setting is recommended.
[High]	Smoothes out the grain in the picture even when the grain is very notable but it may lower the image sharpness and tonal quality.



NOTE

- This setting is not reflected in the preview image.
- This setting is available when [Color] or [Grayscale] is selected in [Color Mode].
- If you set [Grain Correction] to [Low], [Medium], or [High], scanning may take more time.
- The grain correction may not work when the scanning area is too small.

■ [Calibration]

Calibrate the scanner if the colors in the preview image vary from those in the original document. To access this setting, press . Clicking [Execute] starts the calibration process, which adjusts the scanned image to the proper coloration. Set [Execute at Every Scan] to [ON] if you want to calibrate the scanner every time you scan.



IMPORTANT

Do not open the document cover while the scanner is calibrating.

■ Color Settings

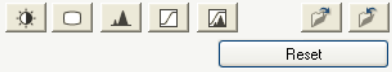
Using Color Settings buttons, you can adjust the brightness and contrast of the whole image, perform gamma correction, specify highlights and shadows, and adjust the contrast and balance in an image (with the histogram and tone curve).

The Color Settings buttons will be displayed when [Color] or [Grayscale] is selected in [Color Mode].

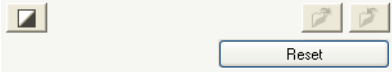
In [Black and White] mode, the Color Settings buttons changes to the [Threshold] button, and no Color Settings buttons will be displayed when [Text Enhanced] mode or [Canon ColorGear] is selected.

When you use the Color Settings buttons, the changes you make will be immediately reflected in the preview image or in the scan.

Color Settings buttons when [Color] or [Grayscale] is selected in [Color Mode]



Color Settings buttons when [Black and White] is selected in [Color Mode]



(Save)

Saves settings to a color adjustment file.

You can save the color settings for use in future scans. The file extension will be (.adc) for color and (.adg) for grayscale.




(Load)

Loads the settings in the saved color adjustment file to scan an image with the saved settings.

[Reset]

Revises all color adjustment settings to default settings. [Master], [Red], [Green], [Blue] and all settings for contrast/brightness, gamma, histogram and tone curve will be suspended and will return to default settings. Images which have undergone automatic color correction will also return to their defaults.

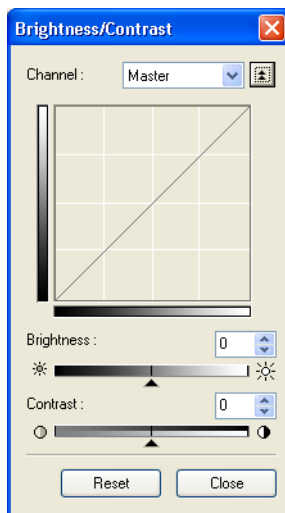
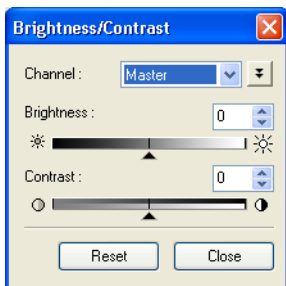
■ [Brightness/Contrast]

By clicking , you can access the [Brightness/Contrast] dialog box.

If the original image is too dark or too bright, or if the image quality is flat due to lack of contrast, adjust the levels of brightness and contrast.

The brightness and contrast are active if [Color] or [Grayscale] is selected in [Color Mode].

To adjust the brightness and contrast diagrammatically, press .



[Channel]

Selects a color to adjust either [Red], [Green], or [Blue], or select [Master] to adjust three colors together.

[Brightness]

Move the slider to the left to increase the darkness of the image, and to the right to increase the brightness of the image. You can also enter values (–127 to 127).


[Contrast]

Move the slider to the left to decrease the contrast of the image, and to the right to increase the contrast of the image. You can also enter values (–127 to 127).

[Reset]

Resets all the current settings to their default values.

■ [Gamma]

By clicking , you can access the [Gamma] dialog box.

The gamma allows you to adjust the brightness of the image viewed on the computer monitor to the brightness of the original document. The default is 2.2. You will have to change this value if you are using a monitor with a different gamma value. When you set the monitor's gamma value, the scanner's gamma value will automatically be displayed in the formula (reciprocal equation of the monitor gamma value) below.

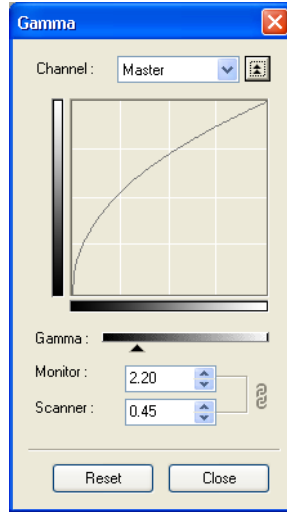
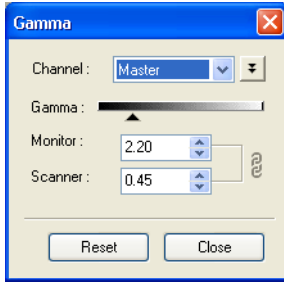
$1 / \text{monitor gamma value} = \text{scanner gamma value}$

The gamma is active if [Color] or [Grayscale] is selected in [Color Mode].

To adjust the gamma diagrammatically, press .


NOTE

- The monitor has characteristics (gamma values) for reproducing colors. The gamma value of an average monitor is between 1.4 and 2.2, and reproduces colors in a somewhat darker way than the original document. Consequently, to correct the difference between the color in the original image and the reproduction of the color by the monitor, you may need to correct the gamma value.
- For the monitor's gamma value, refer to the documentation of your monitor, or contact the manufacturer of your monitor.



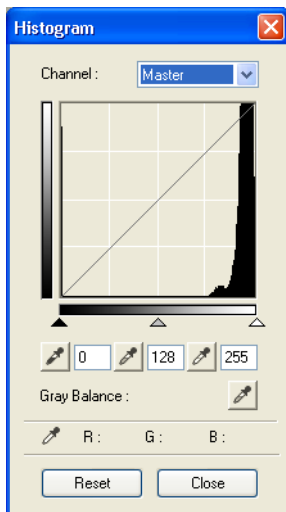
- [Channel]** Selects a color to adjust either [Red], [Green], or [Blue], or select [Master] to adjust the three colors together.
- [Gamma]** Move the slider to the left to decrease or the right to increase the contrast displayed in the middle of the tonal range (midtones) of the image. You can also enter values (0.10 to 10.00).
- [Reset]** Resets all the current settings to their default values.

■ [Histogram]

By clicking , you can access the [Histogram] dialog box.

A histogram allows you to see the data concentration at each brightness level in an image. You can specify the darkest and brightest levels within an image, cut the levels and expand the middle of the tonal range of the image.

The histogram is active if [Color] or [Grayscale] is selected in [Color Mode].







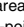
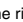
[Channel]

Selects a color to adjust either [Red], [Green], or [Blue], or select [Master] to adjust the three colors at once.

[Reset]

Resets all the current settings to their default values.


1 To change the black-point (shadow-level), mid-point (midtone-level), or white-point (highlight-level), do one of the following.

- ☐ Click  (Black-point eyedropper tool) then click a point in the preview image to specify the darkest point. You can also enter a value (0 to 245).
- ☐ Click  (Mid-point eyedropper tool) then click a point in the preview image to specify the midtone point. You can also enter a value (5 to 250).
- ☐ Click  (White-point eyedropper tool) then click a point in the preview image to specify the highlighted point. You can also enter a value (10 to 255).
- ☐ Drag the triangles at the bottom of the histogram to an appropriate level.
 - Areas on the left of  (parts darker than the value specified in [Black-point]) will turn black.
 - The area at  (parts specified in [Mid-point]) will turn to a color exactly between black-point and white-point.
 - Areas on the right of  (parts lighter than the value specified in [White-point]) will turn white.

2 When adjusting a color image, click (Gray Balance eyedropper tool) → click a point in the preview image to specify the point to execute gray balance adjustment.

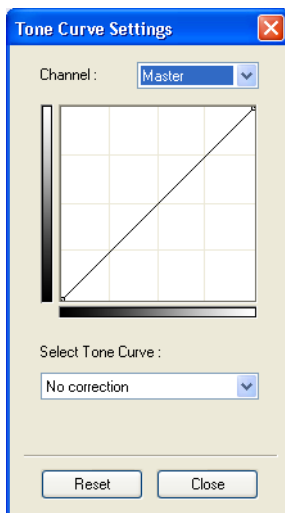
The gray balance adjustment ensures that gray elements within a scanned image appear as a neutral gray, and consequently, other elements within the image will also have true color reproduction.

■ [Tone Curve Settings]

By clicking , you can access the [Tone Curve] dialog box.

You can make subtle adjustments to the brightness of a specific area of an image by selecting the type of the tone curve. The tone curve is a graph showing the balance of tone input and output.

The tone curve is active if [Color] or [Grayscale] is selected in [Color Mode].



[Channel]

Selects a color to adjust either [Red], [Green], or [Blue], or select [Master] to adjust three colors together.


[Select Tone Curve]

Selects the tone curve. ([No correction], [Overexposure], [Underexposure], or [High contrast])

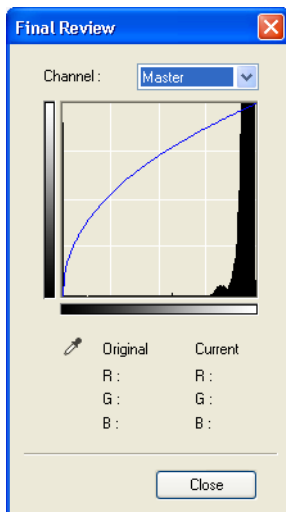
[Reset]

Resets all the current settings to their default values.


■ [Final Review]

By clicking , you can access the [Final Review] dialog box.

In this dialog box, you can confirm the color settings you have made.



■ [Threshold]

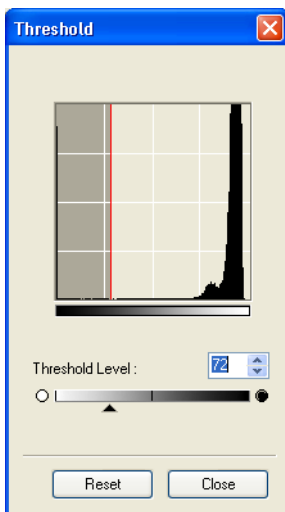
By clicking , you can access the [Threshold] dialog box.

If [Black and White] is selected in [Color Mode], the Color Settings buttons will become the [Threshold] button.



NOTE

- The brightness of color and grayscale images are expressed as a value between 0 and 255 but brightness of black and white images is expressed in terms of either black or white including the parts of an image which are a color between the two. The boundary at which black and white is divided is called Threshold.
- By adjusting the threshold, you can sharpen characters in a text document and reduce back-printing such as in newspapers.



[Threshold Level]

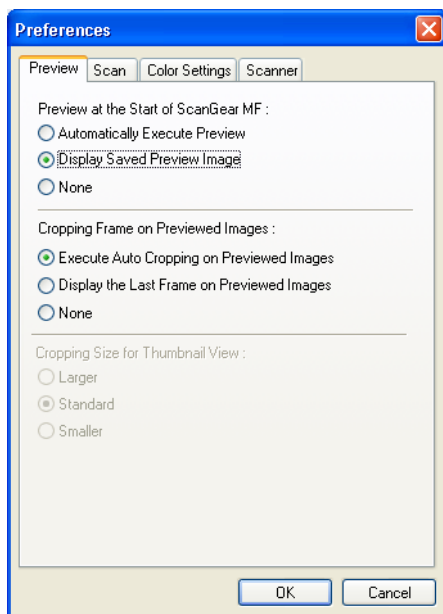
Move the [Threshold] slider to the right to increase the threshold value and thus reduce the white areas (black areas will increase). Move the slider to the left to decrease the threshold value and thus increase the white areas (black areas will reduce). You can also enter a value (0 to 255).

[Reset]

Resets all the current settings to their default values.

■ [Preferences] Dialog Box

Clicking [Preferences] on [Advanced Mode] tab opens the [Preferences] dialog box. In this dialog box, you can adjust settings for scanning and previewing.



[Preview at the Start of ScanGear MF]

Selects the preview operation when you open ScanGear MF. [Display Saved Preview Image] is selected by default.

[Automatically Execute Preview]

The preview scan will start automatically when you open ScanGear MF.

[Display Saved Preview Image]

Displays the image last previewed. Color Settings and the Flip, Left and Right Rotate, Reverse Color and Ruler buttons in the Toolbar will be reproduced.

[None]

Nothing is displayed when ScanGear MF is opened.

[Cropping Frame on Previewed Images]

Sets how the frame is displayed when you preview images. [Executes Auto Cropping on Previewed Images] is selected by default.

[Executes Auto Cropping on Previewed Images]

The document will automatically be cropped to match the document size.

[Display the Last Frame on Previewed Images]

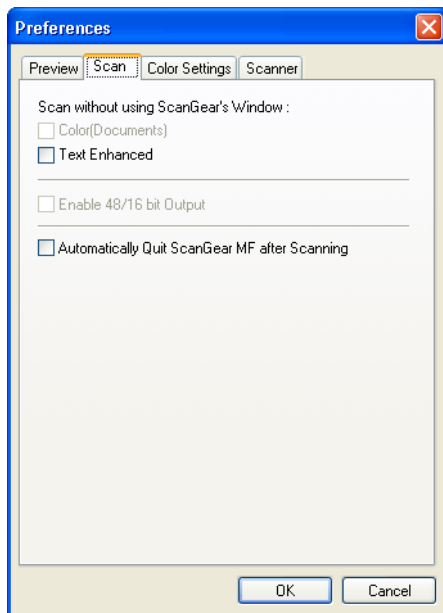
Displays the last frame when you preview images.

[None]

No frame will be displayed when you preview images.

[Cropping Size for Thumbnail View]

This setting is not available for this model.



[Scan without using ScanGear's Window]

Color mode cannot be changed in applications such as OCR software which will not display the ScanGear MF dialog box (UI off mode), and consequently the document will be scanned with the settings in the application. To override the application settings and scan in a specific color mode, configure the settings here. Neither of these settings is selected by default.

[Color (Documents)]

This setting is not available for this model.

[Text Enhanced]

The document is scanned in [Text Enhanced] mode when the [Black and White] setting is configured in the application.



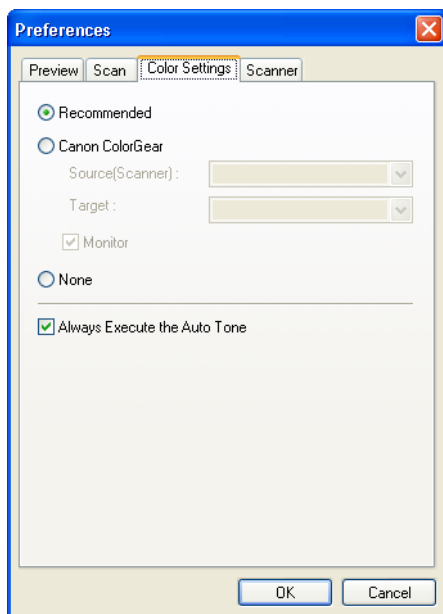
IMPORTANT

These settings will be invalid in UI mode (the mode in which the ScanGear MF dialog box is displayed).

[Enable 48/16 bit Output] This setting is not available for this model.

[Automatically Quit ScanGear MF after Scanning]

If selected, the ScanGear MF dialog box quits automatically after the image is scanned. This setting is not selected by default. Some applications will automatically quit ScanGear MF after scanning irrespective of this setting.



Click one of the following. The default setting is [Recommended].

[Recommended]

Vividly reproduces the tone of a document on the screen. Normally this settings is recommended.

[Canon ColorGear]

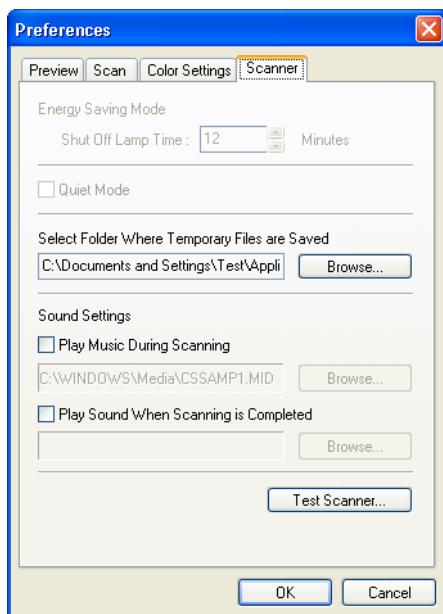
Select to automatically match the scanner, monitor and color printer colors, thus reducing time and trouble to manually match the monitor and printer colors. This setting is available when [Color] is selected in [Color Mode]. If [Canon ColorGear] is selected, the Color Settings buttons are disabled on the Advanced Mode tab.

[None]

No color matching is made.

[Always Execute the Auto Tone]

If selected, the image color will always be automatically corrected. If you select either [Canon ColorGear] or [None], this setting is not available. This setting is selected by default.



[Energy Saving Mode] You cannot set the Energy Saving Mode from your computer.

[Quiet Mode] This setting is not available for this model.

[Select Folder Where Temporary Files are Saved]

Click [Browse] and specify the folder to which the file will be saved.

[Sound Settings] Sets the scanner to play music during scanning or play a sound when scanning is completed.

[Play Music During Scanning]

If selected, the scanner plays music during scanning. Click [Browse], then specify a sound file.

[Play Sound When Scanning is Completed]

If selected, the scanner plays sound when scanning is completed. Click [Browse], then specify a sound file.

You can specify the files below.

- MIDI files (*.mid, *.rmi, *.midi)
- Audio files (*.wav, *.aiff)
- MP3 file (*.mp3)

[Test Scanner]

Checks the power cord plugged in, or the USB cable is connected between the machine and your computer.

Determining Resolution

You can specify a resolution in [Image Quality] in the MF Toolbox settings dialog box, or in [Output Resolution] in ScanGear MF.



NOTE

- *The data in the image you have scanned is a collection of dots carrying information about brightness and color. The density of these dots is called "resolution," and "dpi" (dots per inch) refers to the number of dots in one inch. Resolution will determine the amount of detail your image contains. The higher the resolution (number), the more detail in your image; the lower the resolution (number), the less detail.*
- *As a general rule, you should select a scanning resolution that corresponds to your final output device such as a monitor or printer.*

■ Images for Display on a Monitor

Images for display on a monitor should in general be scanned at a resolution of 75 dpi.

■ Images for Printing

Images to be printed should be scanned at a resolution which corresponds to the resolution of the printer. For example, if you are using a 600 dpi black and white printer, you should scan your document at [600 dpi].



NOTE

With a color printer, the colors are expressed as a certain percentage of ink pigment so scanning your document at half the resolution of the printer should be fine. For example, if you are using a 600 dpi color printer, you should scan your document at [300 dpi].

■ Printing to Scale

For example, if you want to print a document which is twice the size both vertically and horizontally, the resolution of your document will be reduced by half. If the resolution of the original document is 300 dpi, the resolution of the enlarged document will be 150 dpi. If you print the document with a 600 dpi color printer, the lack of detail in the image may be obvious. In such a case, if you scan at a resolution of 600 dpi, resolution will be 300 dpi even if you double the size of the document and you can print the document with sufficient quality. Conversely, if you want to print a document at a reduced size, it should be sufficient to scan at half the resolution.

■ Resolution and Data Size

If you double the resolution, the image data will be four times greater. If the data is too large, processing speed will slow down significantly, and you may experience malfunctions such as lack of memory. Make sure the resolution corresponds to the purpose of use of the image and set at the lowest level possible.

Scanning with the WIA Driver (Windows XP Only)

Scanning from the [Scanner and Camera Wizard] Dialog Box

NOTE

If white lines appear on one edge of the scanned image, check that the document is correctly placed on the platen glass. A document should be placed approximately 3 mm from the front edge (i.e., the edge closest to the control panel) of the platen glass.

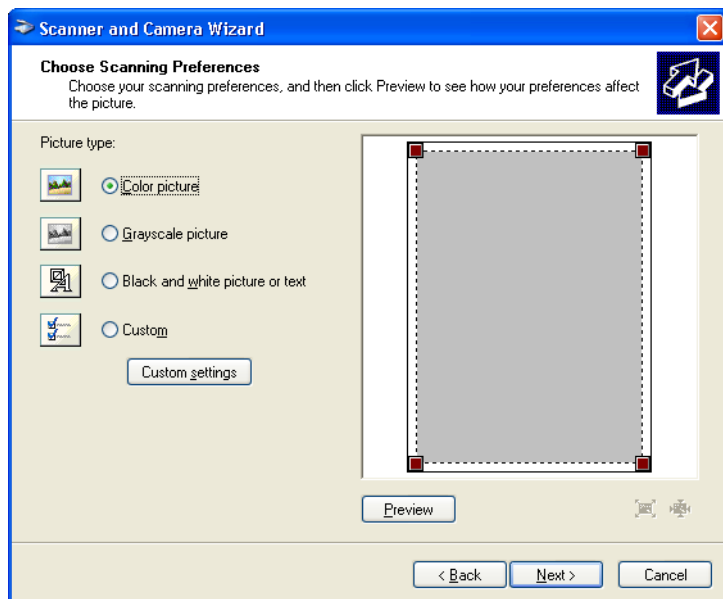
1 Open the [Scanners and Cameras] folder.

For details on how to open the [Scanners and Cameras] folder, see "Setting Up [Start] in the [Scanners and Cameras] Folder (Windows2000: the [Scanners and Cameras Properties] Dialog Box)," on p. 3-3.

2 Double-click the scanner icon ([WIA Canon MF3110]).

3 Click [Next].

4 Select a picture type.



You can select from the following:

- [Color picture]
- [Grayscale picture]
- [Black and white picture or text]
- [Custom]

NOTE

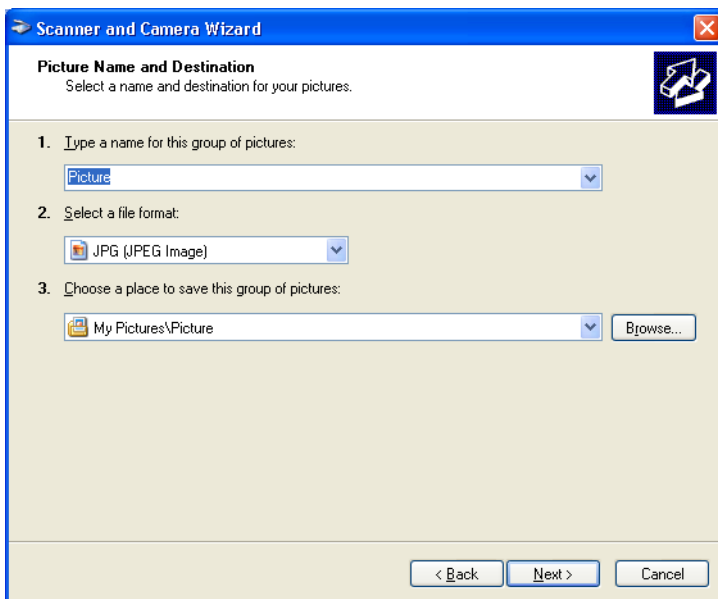
When selecting [Custom], click [Custom settings] to make detailed settings in the [Properties] dialog box. (See "Advanced Properties," on p. 3-42.)

5 Specify the scanned area.

Click [Preview] → drag  to specify the scanned area.

6 Click [Next].

7 Specify a name, a file format, and the location for saving the group of pictures.



- ☐ Enter a name for the group of pictures.

When you save more than one picture in the same location, sequential numbers are automatically added at the ends of file names (e.g. numbers 001, 002, ... are added from the second picture on.)

- ☐ Select a file format for the pictures.

You can select from the following:

- [BMP (Bitmap Image)]
- [JPG (JPEG Image)]
- [TIF (TIF Image)]
- [PNG (PNG Image)]

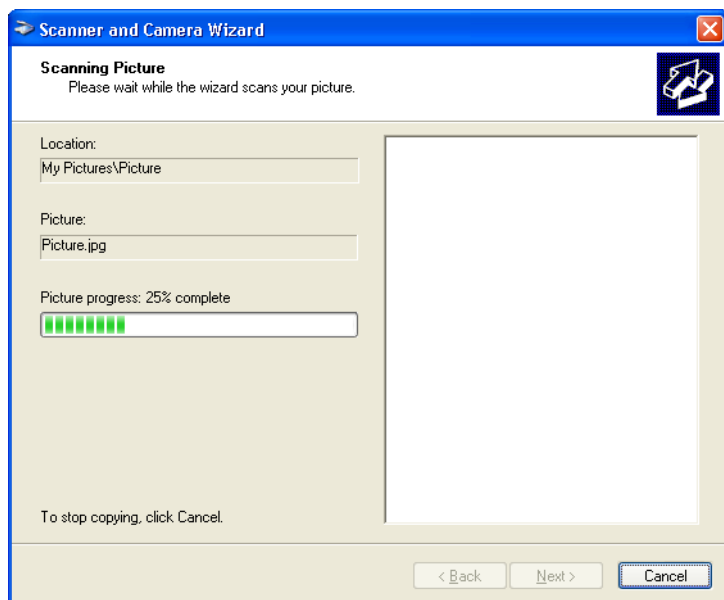
- ☐ Select the location where you want to save the pictures.

To change the location, click [Browse] → select the new location → click [OK].

8 Click [Next].

3

Scanning



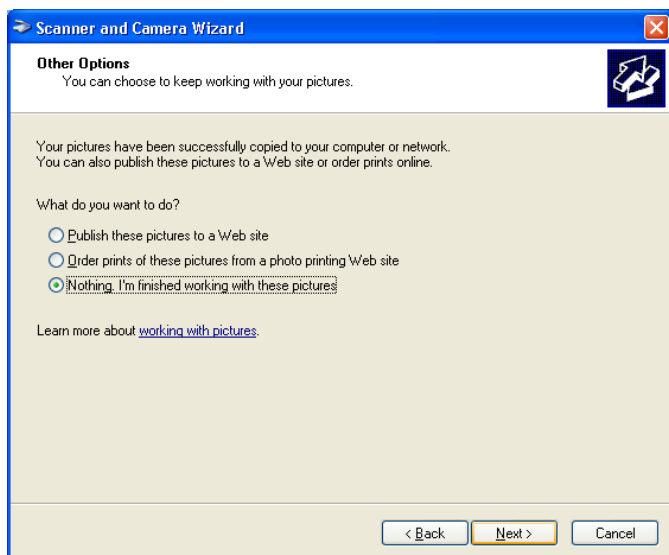
Scanning starts.



NOTE

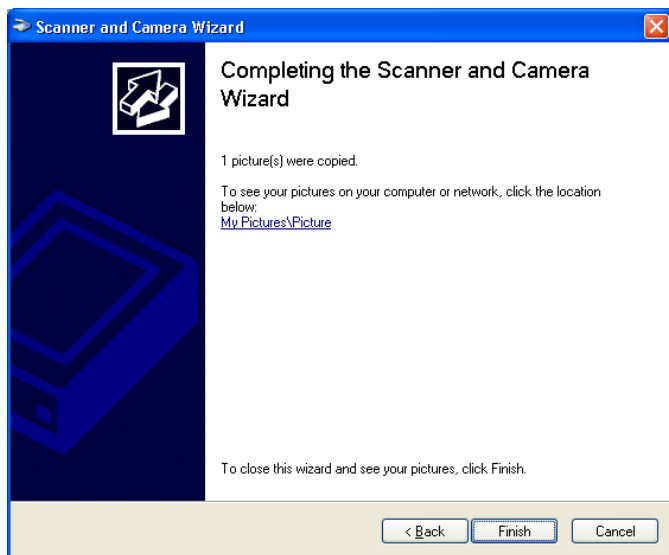
To cancel scanning, click [Cancel].

9 Click [Next].



If you want to publish these pictures to a Web site or order printouts online, select the corresponding option. For more information, see the Windows operating system documentation.

10 Click [Finish].



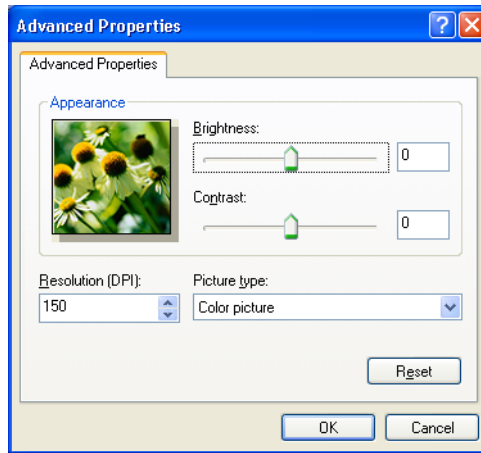
The location selected in step 7 will appear.

■ Advanced Properties

The following screen shows the Advanced Properties tab in Windows XP.

NOTE

The setting items and default values in the [Advanced Properties] tab vary depending on the type of picture you have selected.



Preview

Shows the preview of scanned image.

[Brightness]

Specifies the brightness (–127 to 127).

NOTE

You can also adjust the brightness in PageManager or OmniPage if it is not specified sufficiently in this tab.

[Contrast]

Specifies the contrast (–127 to 127). (Only for color or grayscale scanning.)

NOTE

You can also adjust the contrast in PageManager or OmniPage if it is not specified sufficiently in this tab.

[Resolution (DPI)]

Selects the scanning resolution in dot per inch (50 to 300).

NOTE

You can enter the values of resolution listed above in the edit box directly. If you enter an invalid value, the error message will appear and the resolution will be corrected to the closest one.

[Picture type]

Selects the scanning color type ([Color picture], [Grayscale picture], or [Black and white picture or text]).

[Reset]

Resets all the current settings to their default values.

Scanning from an Application

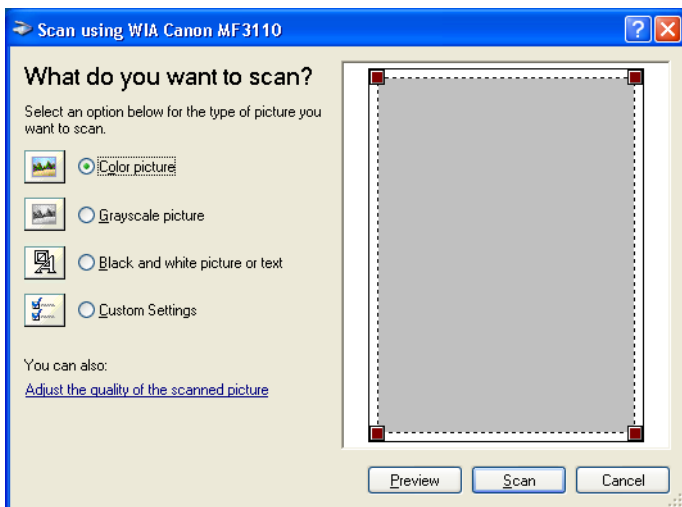
With the WIA driver dialog box open, follow the procedure below.

To display the WIA driver, see "Scanning an Image from an Application," on p. 3-12.



NOTE

If white lines appear on one edge of the scanned image, check that the document is correctly placed on the platen glass. A document should be placed approximately 3 mm from the front edge (i.e., the edge closest to the control panel) of the platen glass.



1 Select the type of picture you want to scan.

You can select from the following:

- [Color picture]
- [Grayscale picture]
- [Black and white picture or text]
- [Custom Settings]

2 If you want to adjust the quality of the scanned image, click [Adjust the quality of the scanned picture].

The [Advanced Properties] dialog box appears.

3 Adjust the quality of the image → click [OK].

For details on how to adjust the quality of the image, see "Advanced Properties," on p. 3-42.

4 Specify the scanned area.

Click [Preview] → drag  to specify the scanned area.

5 Click [Scan].

Scanning starts. When the scanning is completed, the scanned image will appear in the display area of the application.

Troubleshooting

This chapter describes the problems you might encounter when using the machine and their remedies. It also explains what to do if you cannot solve the problem by yourself.

- "Printer Problems," on p. 4-1.
- "Driver Problems," on p. 4-3.
- "Scanning Problems," on p. 4-5.
- "Installing and Uninstalling Problems," on p. 4-9.

If you cannot solve the problem by referring to the information in this chapter, see also Chapter 9, "Troubleshooting," in the *User's Guide*.

Printer Problems

Printer does not print.

Q Is there some paper left?

A Make sure paper is loaded.

Q Does the copy job stop due to out of paper?

A Load paper. The print job will start automatically when the copy job is completed.

Q Is the cartridge installed correctly?

A Make sure the cartridge is installed correctly. (See the *Set-Up Sheet*.)

Q Does your BIOS port setting need to be modified?

A See your computer's documentation concerning available ports.

Q Is your computer working properly?

A Make sure your computer is turned on. If so, see your computer's documentation for troubleshooting.

No power is supplied.

Q Is the power cord plugged in?

A Make sure the power cord is securely plugged into both the machine and the AC outlet.

Q

Is the AC outlet supplying power?

A

Make sure the AC outlet is supplying power; try another outlet if necessary.

Q

Does the AC voltage match the printer?

A

Make sure the voltage of the AC outlet matches the ratings on the machine.

Printer stops printing.

Q

Is the interface cable loose?

A

Check your computer and cable.

Q

Are you working on an application in the foreground?

A

Printer performance improves if you give priority to your print job.

<CHECK PAPER SIZE> message appears in the LCD of the machine.

Q

Is paper setting of the machine different from that of your computer?

A

Load the correct paper size or change <PAPER SIZE> in <PAPER SETTINGS> of the Menu. (See Chapter 2, "Paper Handling," in the *User's Guide*.)

Printout is wrong.

Q

Is there a communication problem between the printer and your computer?

A

Make sure your cable connections are secure.

A

Make sure your USB cable is less than 3 m long.

A

Make sure you are not using a switch box.

A

Make sure you have selected the correct printer driver in Windows.

Q

Is a wrong printer driver selected in the [Printers and Faxes] (Windows 98/Me/2000: [Printers]) folder?

A

Make sure the corresponding printer driver is selected in the [Printers and Faxes] (Windows 98/Me/2000: [Printers]) folder.

Printer locks up system.

- Q** Does your system setup have a problem?
- A** Make sure that you have a high-quality shielded interface cable.
- A** The problem might be in your BIOS. Verify that your BIOS setup is correct. (See your computer's documentation for details.)
- A** Verify that your physical memory is working correctly.
- A** If you have a Toshiba laptop, change the following line in your CONFIG.SYS file:
c:\winutils\mxtime.exe
to:
REM c:\winutils\mxtime.exe

Computer indicates a device time-out.

- Q** Is the machine off, offline, or not connected to the computer?
- A** Make sure the machine is not paused.
- A** Make sure the machine's interface cable is securely connected to both the machine and the computer.
- A** Make sure paper is properly loaded from the cassette or multi-purpose feeder.
- A** Reset the machine and the computer.
- A** Try the print operation again.
- A** Try a different cable.

Driver Problems

Driver is not working properly.

- Q** Is the printer driver selected as the default printer driver?
- A** Specify the corresponding printer driver as the default printer driver for the MF3110.

Cannot print some fonts in a document correctly.

Q Does the document contain Adobe Type Manager (ATM) fonts?

A Adobe Type Manager (ATM) is not supported. Replace Adobe Type Manager (ATM) fonts to other appropriate fonts.

Cannot print with a printer driver other than the MF3110 printer.

Q Is the printer driver connected to the same port as the MF3110 printer driver?

A Connect the printer driver to a port different from the MF3110 printer driver.

Cannot install the MF3110 printer driver using the USB port.

Q Is the USB driver installed properly?

A Perform the following steps.

1. Make sure the machine is connected to your computer using a USB cable and the machine is turned on.
2. For Windows XP, click [Performance and Maintenance] in the [Control Panel] folder → [See basic information about your computer] in the [Performance and Maintenance] folder. For Windows 98/Me/2000, double-click [System] in the [Control Panel] folder. The [System Properties] dialog box appears.
3. For Windows 2000/XP, select the [Hardware] tab → click [Device Manager] → double-click [Universal Serial Bus controllers]. For Windows 98/Me, select the [Device Manager] tab → double-click [Universal Serial Bus controllers].
4. Locate the USB class driver under [Universal Serial Bus controllers]. Delete ONLY the USB class driver specified for your operating system. (If the USB class driver is displayed under [Other device], delete ONLY one of the following, depending on your operating system: [MF3110], [Canon CARPS USB Printer], or [Unknown].)
For Windows 2000/XP, select [USB Printing Support] or [Canon CARPS USB Printer] → select [Uninstall] from the [Action] menu. For Windows 98, select [MF3110] → click [Remove]. For Windows Me, select [Canon CARPS USB Printer] → click [Remove].



IMPORTANT

Never delete other devices or device drivers. Windows may not operate properly.

5. Close the [Control Panel] folder → unplug the USB cable.
6. Restart your computer.
7. For instructions on installing the printer driver, see "Installing Software on Your Computer," on p. 1-2.



NOTE

The procedure for Windows XP is given for the Category View mode.

Strings of garbled characters are printed.

Q Is the driver installed properly?

A Check if the corresponding printer driver icon is displayed in the [Printers and Faxes] (Windows 98/Me/2000: [Printers]) folder. If not, install the driver. If the corresponding printer driver icon is displayed, right-click the corresponding printer driver icon → check if [Set as Default printer] (Windows 98/Me: [Set as Default]) is selected in the pop-up menu. For more information, see "Checking Installation," on p. 1-7.

Scanning Problems

Cannot scan a document.

Q Is there anything displayed in the LCD?

A If nothing is displayed in the LCD, see Chapter 9, "Troubleshooting," in the *User's Guide*.

Q Is the Alarm indicator blinking?

A If the Alarm indicator is blinking, see Chapter 9, "Troubleshooting," in the *User's Guide*.

Q Is the document loaded correctly?

A Remove the document and load it in the platen glass correctly. (See Chapter 3, "Document Handling," in the *User's Guide*.)

Q Is your computer working properly?

A Restart your computer.

Q Is a USB hub or repeater working properly?

A When using a USB hub or repeater, try connecting a USB cable directly to the computer to check if it works properly. If you can scan the document successfully after connecting a USB cable directly to the computer, check your USB hub or repeater if it is working properly.

Q

Are you using a USB 2.0-compatible USB hub?

A

If you connect the machine to a USB 2.0-equipped computer using a USB 2.0-compatible USB hub, you may not be able to scan. In this case, connect a USB cable directly to the computer.

If you want to connect the printer and computer via a USB 2.0-compatible hub, follow the procedure below to modify the INI file. It is recommended to make a backup copy of the file before making any changes to it.

1. Open the following file in Notepad or another text editor application.

Windows 98/Me:

`windows\system\CNCMFP10.ini`

Windows 2000:

`winnt\system32\CNCMFP10.ini`

Windows XP:

`windows\system32\CNCMFP10.ini`

2. Below the last line, add the following two lines, then save the file. Take care not to modify any other parts.

`[Scan]`

`ReadSize=16`

A

If you connect the machine to a USB 2.0-equipped computer, you may not be able to scan. If your PC is equipped with two or more USB ports, try connecting the machine to another USB ports. If the problem persists, follow the procedure below to modify the INI file. It is recommended to make a backup copy of the file before making any changes to it.

1. Open the following file in Notepad or another text editor application.

Windows 98/Me:

`windows\system\CNCMFP10.ini`

Windows 2000:

`winnt\system32\CNCMFP10.ini`

Windows XP:

`windows\system32\CNCMFP10.ini`

2. In the `[ScanSize]` section, change "Read512Bytes=0" to "Read512Bytes=1," then save the file. Take care not to modify any other parts.

Q

After installing the software, did you install a TWAIN-compatible application?

A

The TWAIN system file is replaced with something inappropriate and you will be unable to scan images. If this happens, remove the software (see "Uninstalling and Reinstalling the Software," on p. 1-8), then reinstall it (see "Installing Software on Your Computer," on p. 1-2.)

Q Is the machine recognized in [Scanners and Cameras] of the [Control Panel] folder?

A Follow this procedure below to check if the corresponding scanner driver name or icon is present in [Scanners and Cameras] of the [Control Panel] folder:

1. Click [start] on the Windows task bar → [Control Panel]. (Windows 98/Me/2000: Click [Start] on the Windows task bar → select [Settings] → [Control Panel].)
2. Click [Printers and Other Hardware] in the [Control Panel] folder → [Scanners and Cameras]. (Windows 98/Me/2000: Double-click [Scanners and Cameras].)
3. If [WIA Canon MF3110] (Windows 98/Me/2000: [Canon MF3110 Twain Driver]) is present in the [Scanners and Cameras] folder or dialog box, the machine is recognized. If not, remove the software (see "Uninstalling and Reinstalling the Software," on p. 1-8), then reinstall it (see "Installing Software on Your Computer," on p. 1-2.)

You tried to create a multipage PDF, but were not able to scan several documents.

Q Is the [Automatically Quit ScanGear MF after Scanning] checkbox in [Preferences] checked?

A Click a button on the MF Toolbox and in the settings dialog box, select [Use the scanner driver to make advanced settings]. When ScanGear MF opens, if you scan with the [Automatically Quit ScanGear MF after Scanning] setting selected in [Preferences] of Advanced Mode, only the documents placed at one time on the platen glass will be scanned. If you want to scan additional documents, clear the [Automatically Quit ScanGear MF after Scanning] checkbox before scanning.

Computer has hung up or frozen.

Q Is enough memory loaded in your computer?

A Quit other opened applications and try again.

Q Is enough space available in the hard disk?

A Check that hard disk has enough available space, in particular when scanning large documents at a high resolution. For example, an LTR-size document scanned at 600 dpi, full color requires a minimum of 300 MB of disk space.

* If you do not have enough available space, scan the document at a lower resolution.

Q Does an error occur when scanning an image in Photoshop?

A Change the allocated memory. On the [Edit] menu, select [References] → click [Memory & Image Cache]. Change the [Physical Memory Usage] in a range of approximately 10% to 20%.

Q Is the driver installed properly?

A Remove the software (see "Uninstalling and Reinstalling the Software," on p. 1-8), then reinstall it. (See "Installing Software on Your Computer," on p. 1-2.)

You installed the applications on the MF3110 Setup CD-ROM but they were not registered in the MF Toolbox.

Q Have you installed the applications with the MF Toolbox open?

A If you install the applications with the MF Toolbox open, the applications will not be registered in the MF Toolbox. Click [Defaults] to register them. (See "Scanning with the MF Toolbox," on p. 3-5)

When you click a button on the MF Toolbox, another application opens.

Q Is the application selected correctly for that button?

A Click a button on the MF Toolbox and select the application you want to open for that button. Repeat for the other buttons. (See "MF Toolbox Settings," on p. 3-8)

Changed settings in a dialog box are not activated (Windows Me/2000).

Q Did you restart your computer after changing the settings?

A In Windows Me/2000, if you open [Scanners and Cameras] in the [Control Panel] folder and change the settings in the [Events] tab, the settings will not be activated unless you restart your computer. Once you have changed your settings, restart your computer.

Scanned images look dirty.

Q Is the platen glass or the platen glass cover clean?

A Clean the platen glass or the platen glass cover.

Q Is the image size too small?

A Some applications do not display an image properly at small sizes. Try displaying the image at 100% magnification.

Q Does the monitor display color set at below 16 bits?

A In [Display Properties], set the display colors to 16-bit color, 24-bit color or higher.

White lines appear on one edge of the image you scan.

Q Is the document placed on the platen glass correctly?

A Place the document approximately 3 mm from the left edge of the platen glass.

Scanned image is displayed at a larger (smaller) size on the computer screen.

Q Is the resolution setting correct?

A Do one of the following:

1. Enlarge or reduce the image display in the application.
However, if you open the image in [Paint] or [Imaging], it may display at a large size and you will not be able to reduce it.
2. Change the resolution and scan again.
The image will be large if resolution is high. It will be small if resolution is low.
(See "Determining Resolution," on p. 3-37)

Installing and Uninstalling Problems

Cannot install the software.

Q Have you followed the instructions to install the software?

A Try reinstalling the software. If an error occurred and installation was not complete, restart your computer and try reinstalling the software.

Q Are any other applications open?

A Quit all of these and try reinstalling the software.

Removal of the drivers takes too long (Windows XP).

Q Is any application such as a virus checker open when removing the software?

A Quit any applications (including virus checkers) before removing the software.

Removal of the software was completed, but [Canon] remains.

Q Did you remove the MF drivers before removing the MF Toolbox?

A In Windows XP, right-click the [start] menu to open the Windows Explorer → select [Start Menu] in [Administrator] → [Programs] → delete the [Canon] folder.
 In Windows 2000, open [Settings] from the [Start] menu → click [Taskbar & Start Menu] → [Advanced] → [Advanced ...] → select [Start Menu] in [All Users] → [Programs] → delete the [Canon] folder.
 In Windows 98/Me, open [Settings] from the [Start] menu → click [Taskbar & Start Menu] → [Start Menu Programs] → [Remove] → select the [Canon] folder → click [Remove].

The message <Version conflict> appears on your computer (Windows 98).

Q Is Photoshop installed on your computer?

A If the message <Version conflict> or <Windows 98 file language or ...> appears during installation, click [Yes] or [No]. Whichever you click, installation thereafter will continue trouble-free.

Cannot use the software after upgrading to Windows XP.

Q Have you upgraded Windows 98/Me/2000 to Windows XP without removing the software?

A Remove the software (see "Uninstalling and Reinstalling the Software," on p. 1-8), then reinstall it. (See "Installing Software on Your Computer," on p. 1-2.)

In [Device Manager], green mark "?" is displayed (Windows Me).

Q Is green mark "?" displayed on [USB Composite Device] in [USB (Universal Serial Bus) Controller] in [Device Manager] in Windows Me?

A As this is not a problem, you can continue to use it as is.

Printer Specifications

Hardware

Printing Speed	20 pages per minute (A4-size paper)
Resolution	Approx. 600 dpi × 600 dpi
Paper Sizes	
Cassette	LTR, LGL, Executive, A4, B5, A5, Envelope Monarch, Envelope COM10, Envelope DL, Envelope C5 Plain paper, transparencies, envelopes, and heavy paper (up to 128 g/m ²) Maximum capacity: 250 sheets of 64 g/m ² paper
Multi-purpose Feeder	216 mm × 356 mm [max.] to 76 mm × 127 mm [min.] Plain paper, transparencies, envelopes, and heavy paper (up to 128 g/m ²) Maximum capacity: 1 sheet
Paper Delivery (Face Down Output Way)	60 sheets (64 to 75 g/m ²)
Host Interface	USB interface

Software

Printing Software	Canon Printer Driver for MF3110
Valid Printing Area	Max. 5 mm blank margins at each edge

Glossary

A

AC

Alternating Current. The type of electrical current typically available from household wall outlets.

Application

Abbreviation of the phrase "application software." Software designed for a specific purpose such as word processing software, spreadsheet software, database software, or a combination of these.

B

Bold

A characteristic of a printed character with wider, and darker representation. Also referred to as emphasized or double-strike printing.

Brightness

The relative proportion of light and dark areas. Decreasing brightness darkens the overall image; increasing brightness lightens it.

C

Canon ColorGear Color Matching

Color management system for high-speed, high-precision color processing using Canon's own color management technology. Canon ColorGear is compatible with the industry-standard format "ICC Profiles" and enables high-precision color management using the properties of color devices specified in color profiles. The system is used in many Canon products.

Client

A computer that is connected to the printer over a network. A client does not control the printer directly. It interacts with the printer through a server. See also Server.

Collate

To print multiple copies of a multi-page document in sequential page order.

Command

An instruction that tells the machine to perform a certain function. Commands are sent from the computer to the machine via the interface cable when the machine is ready.

Contrast

The degree of difference between the lightest and darkest areas of an image. Decreasing contrast lightens the dark areas and darkens the light areas; increasing it darkens the dark areas and lightens the light areas.

Control Panel

The set of Windows programs you can use to change system, hardware, software, and Windows settings.

D

Default setting

A setting that is automatically used if no other setting is specified.

Desktop

The entire Windows screen that represents your work area in Windows. Icons, windows, and the taskbar are displayed on the Windows desktop.

dpi

Dots per inch. A unit of measurement for indicating a printer's resolution. The MF3110 prints at a resolution of 600 dpi.

Driver

A program that controls how the computer and an external device interact. For example, the printer driver supplies Windows with information such as descriptions of the fonts and features of the installed printer.

E

Exif

The Exif (Exchangeable Image File) format is a JEIDA (Japan Electronic Industry Development Association) standard used by most digital cameras to store images. The Exif compressed files use the baseline JPEG format, so they can be read by any application supporting "JPEG." EXIF supports the storage of extra information, such as the date & time the image was taken, exposure information, etc., within the header of each JPEG file.

F

Fixing assembly

The device used during the print process to fix the toner onto the paper (or other media) through applying heat and pressure. The assembly, located inside the printer, gets extremely hot (190°C) during operation.

Folder

A container in which documents, program files, and other folders are stored on your disks. Formerly referred to as a directory.

Font

A complete set of characters of the same size and style. For example, 12-point Courier bold.

Form

A custom paper size, with width and height defined by the user.

G

Gamma Correction

Method for changing the brightness of an image. With gamma correction, the brightness of parts of an image in the middle of the tonal range is changed without changing the lightest or darkest areas of the image, which means you can change the brightness of an image while maintaining contrast.

Grayscale image

A bitmap image that stores data for each dot as a shade of gray, rather than as black or white.

H

Halftones

The process of converting a grayscale image to black dots and white (unprinted) dots that simulate the gray shades in the original image.

I

Import

To bring in information created in another application.

Install

To copy software to a designated location on a computer's hard disk so that it can be used at any time.

Interface

The connection between two devices through which they communicate with each other. The MF3110 features USB interface, which makes it compatible with IBM and similar personal computers.

Interface port

The port through which the machine communicates with the computer. The MF3110 has a USB port, located on the back of the machine. See also USB interface.

Italic

A font style distinguished by slanted characters (the upright strokes of the characters are at an angle to the vertical axis).

J

Jam

A situation created when paper becomes caught along the paper path. You must remove jammed paper before you can continue printing.

K

Kilobyte (KB)

A unit of measurement, representing the binary number 1024, used to describe machine or computer memory size in thousand-byte units.

L

Landscape

A horizontal print orientation. Text and graphics are printed across the longer axis of the page.

Local printer

A printer that is directly connected to your computer, using a USB cable.

M

Megabyte (MB)

A unit of measurement, representing one million bytes, used to describe machine or computer memory size.

Multi-page PDF

Several scanned documents saved as one PDF. Each document will become one page of the PDF.

My Computer

The Windows program that you can use to browse through your computer's filing system, and to open drives, folders, and files. You can also use [My Computer] to manage your files and your filing system, by moving, copying, renaming, and deleting items.

N

Network

A group of computers connected by cables or other means and using software that enables them to share equipment (such as printers) and exchange information.

O

OCR (Optical Character Reader)

Device for reading characters optically. System for extracting information in a text format from information in the form of a graphic such as hand-written or printed characters which have been scanned with a scanner. You cannot edit text scanned with a scanner because it is in a graphic format, but with OCR software you can convert to a text file and then edit the text with word-processing software.

Orientation

The printing of text either along the width (portrait) or length (landscape) of the page.

P

Paper feed

The act of guiding a sheet of paper into the machine's paper path.

Paper jam

A situation created when paper becomes caught along the paper path. You must remove jammed paper before you can continue printing.

Paper path

The route that paper travels through the machine.

Paper source

Source of paper feed. The machine has a cassette and a multi-purpose feeder.

Paper type

All kinds of paper (plain paper, heavy paper, transparencies, and envelopes) are grouped under several paper types.

PDF

Stands for Portable Document Format. A widely used format for transmitting and viewing documents on computers. PDF documents can be read or printed out with Adobe's Acrobat Reader program.

Physical RAM

Random Access Memory (RAM) that is physically present in the computer in the form of memory chips, as opposed to virtual memory. See also Virtual Memory.

Platen

The document scanning unit.

Point size

Character height is defined in points: one point is $\frac{1}{72}$ of an inch.

Portrait

A vertical print orientation. Text and graphics are printed across the shorter axis of the page.

Preview

Provisional scanning and display of the document you are about to scan before you actually scan it. If the preview scan looks different from what you want, you can change the settings, display the preview again and confirm before scanning.

Print job

A document that a Windows application has processed and sent to the Spooler to be added to the print queue or directly to the machine.

Print queue

A list of files that are either waiting to be printed or are currently printing. Once a file has been printed, it is removed from the print queue.

Printer driver

A program that controls how the computer and printer interact. The printer driver supplies Windows with information such as descriptions of fonts and features of the installed printer.

Printers and Faxes folder (Printers folder)

The container in which your printer and fax information is stored.

Properties dialog box

The dialog box that contains information about a particular device, such as a printer.

Proportional spacing

The spacing of characters according to the width of each character. This variable spacing between each character closes up awkward space and makes text easier to read.

Q**Queue**

A list of files that are either waiting to be printed or are currently printing. Once a file has been printed, it is removed from the print queue.

R

Random Access Memory (RAM)

The working memory of the computer in which programs and data are temporarily stored while you use them. Resetting or shutting off the computer clears all information from RAM. Printing very complicated documents might require closing other running programs or adding more RAM to the computer. See also Physical RAM, Virtual memory.

Reinstall

To remove installed software and install again.

Resolution

The density of dots for any given output device, expressed in terms of dots per inch (dpi). Low resolution causes font characters and graphics to have a jagged appearance, but prints faster than higher resolutions. Higher resolution provides smoother curves and angles as well as a better match to traditional typeface designs, but prints more slowly. This machine can produce output with 600 dpi resolution. Resolution values are represented by horizontal data and vertical data, for example, 600 × 600 dpi.

S

Scalable fonts

Scalable fonts allow characters to be printed in various sizes and rotation angles. This is different from bitmap fonts, which are printed in fixed sizes and angles.

Scaling

Enlarging or reducing the printed image.

Scanner driver

A program that controls how the computer and scanner interact. The scanner driver is provided with two drivers: The TWAIN and the WIA driver (for use with Windows XP).

Separator page

Optional pages printed at the beginning of each document to help separate one print job from another.

Server

A network computer that is directly attached to the printer. The server controls the printer and handles print jobs sent from the clients. See also Client.

Shielded

A type of cable that contains a metallic sheath over the conductor material to protect the data passing through the cable from electromagnetic interference. You need to use a double-shielded interface cable with this machine.

Spooling

A process by which an application sends a document to the spooler, rather than directly to the printer, thus freeing the computer and application for other tasks. Spooled documents are printed in the order they are received.

T

Title bar

The horizontal bar that contains the title of a window or dialog box. On many windows, the title bar contains the [Control] menu box and Maximize and Minimize buttons.

Toner

A black, resin-coated powder contained in the cartridge. The machine applies the toner to the surface of the photosensitive drum inside the machine via an electrophotographic mechanism.

Toner saver

Because the black areas of print data are thinned, toner consumption is reduced.

Transfer roller

Presses the paper against the drum, to aid the transfer of toner to the paper.

TrueType fonts

Scalable fonts used for both screen display and printing. TrueType fonts can be sized to any height, and print exactly as they appear on the screen, but with higher resolution.

TWAIN (Technology Without Any Interested Name)

Industry-standard protocol for transferring information from devices such as scanners and digital cameras to a computer.

Industry-standard protocol for an application programming interface (API) for input devices such as scanners. If both the device and the application comply with the standard, they will be compatible regardless of differences in manufacturer or model.

For example, with TWAIN-compatible image-processing software, you can start the scanner's TWAIN driver from the software's menu, scan the document and return the scanned image to its original image-processing software.

U

Uninstall

To remove software installed on a computer and return the computer to its condition before the software was installed.

Universal Serial Bus (USB) interface

These are new serial interface standards. This bus automatically recognizes connections (Plug and Play) to allow plugging and unplugging connectors with the power still turned on to the PC or peripheral equipment.

V

Virtual Memory

Space on the hard disk that Windows uses for temporary data storage as if it were actually random access memory (RAM). Windows does this by means of a swap file. This provides Windows with more usable memory, but reduces speed of access to it when the swap file must be used. See also Physical RAM.

W

Weight

Refers to the thickness of a font: light, medium, or bold. Also refers to the thickness of paper.

WIA (Windows Image Acquisition)

Standard for downloading images from scanners or digital cameras. The machine includes a TWAIN-compliant driver and a WIA-compliant driver. The WIA driver can only be used with Windows XP. With either driver, you can scan documents with the machine in applications which support the TWAIN interface (Photoshop etc.).

Windows Explorer

The Windows program you can use to browse through, open, and manage the disk drives, folders, and files on your computer in a network system. You can also use Windows Explorer to view and open shared folders on other computers on the network. You can use Windows Explorer to manage your files by moving, copying, renaming, and deleting files.

WYSIWYG

Pronounced wizzy-wig, an acronym for "what you see is what you get." For example, when you format a paragraph, the line breaks that appear on the printout are exactly the same as they are on the screen.

A

- Accompanying Applications
 - installing, 1-7
- Add profiles, 2-44
- Add/Delete the Output Size dialog box, 3-17
- Add/Edit profile, 2-30
- Advanced Mode
 - settings, 3-21
 - switching, 3-15
 - toolbar, 3-19
 - using, 3-18
- Advanced Properties dialog box, 3-42
- Advanced Settings
 - Windows 2000/XP, 2-39
 - Windows 98/Me, 2-13
- Advanced tab, Windows 2000/XP, 2-26
- Alarm indicator, 4-5
- Application, 3-12, 5-1
- Attribution tab, Windows 2000/XP, 2-30
- Auto Tone, 3-23

B

- Brightness, 5-2
- Brightness/Contrast, 3-27

C

- Calibration, 3-25
- Cannot install, 4-9
- Canon ColorGear, 3-35
- Cassette, 5-1
- Client, 5-2
- Collate, 5-2
- Color, 2-27
- Color Management tab, Windows 2000/XP, 2-27
- Color Settings, 3-25
- Color Settings tab, 3-35
- Composite device, 4-10
- Contrast, 5-2
- Control Panel, 5-2
- Custom Paper Size Settings, 2-10

D

- Default setting, 5-3
- Descreeen, 3-23
- Detailed Settings
 - Windows 2000/XP, 2-40
 - Windows 98/Me, 2-15
- Details tab, Windows 98/Me, 2-5
- Dialog boxes
 - Windows 2000/XP printer properties, 2-22
 - Windows 98/Me printer properties, 2-4
- dpi, 5-3

Driver

- installing, 1-2
- problems, 4-3
- uninstall, 1-8

E

- Edit Profiles
 - Windows 2000/XP, 2-45
 - Windows 98/Me, 2-20
- Edit Watermark
 - Windows 2000/XP, 2-35
 - Windows 98/Me, 2-9

F

- Fading Correction, 3-24
- Final Review, 3-31
- Finishing tab
 - Windows 2000/XP, 2-32, 2-38
 - Windows 98/Me, 2-12
- Fixing assembly, 5-3
- Font, 5-3
- Form, 5-3

G

- Gamma, 3-27
- General tab
 - Windows 2000/XP, 2-23
 - Windows 98/Me, 2-4
- Grain Correction, 3-25
- Grayscale Adjustment tab
 - Windows 2000/XP, 2-41
 - Windows 98/Me, 2-16
- Grayscale image, 5-3
- Grayscale Settings
 - Windows 2000/XP, 2-40
 - Windows 98/Me, 2-15
- Gutter Settings
 - Windows 2000/XP, 2-38
 - Windows 98/Me, 2-13

H

- Halftones, 5-4
- Hard disk, 4-7
- Histogram, 3-29

I

- Image Settings, 3-23
- Import, 5-4
- Input Settings, 3-21
- Installation, 1-1
 - Accompanying applications, 1-7
 - checking, 1-7

- MF drivers, 1-4
- MF Toolbox, 1-4
 - problem, 4-9
- Interface, 5-4
- Interface port, 5-4

L

- Landscape, 5-4
- Layout Options
 - Windows 2000/XP, 2-37
 - Windows 98/Me, 2-11
- Local printer, 1-2

M

- Matching tab
 - Windows 2000/XP, 2-42
 - Windows 98/Me, 2-17
- Megabyte, 5-5
- MF drivers
 - installing, 1-4
 - uninstalling, 1-8
- MF Toolbox
 - installing, 1-4
 - Save Scanned Image, 3-9
 - scanner settings, 3-8
 - setting, 3-8
 - uninstalling, 1-8
 - using, 3-5
- [MF3110 Setup] screen, 1-3
- Multiple PDF, 3-12
- Multi-purpose feeder, 5-1

N

- Network
 - setting shared printer, 2-47
 - using shared printer, 2-54
 - Windows 2000/XP server settings, 2-47
 - Windows 98/Me server settings, 2-51

O

- Orientation, 5-5
- Output Settings, 3-22

P

- Page Setup tab
 - Windows 2000/XP, 2-32, 2-33
 - Windows 98/Me, 2-6
- Paper
 - delivery, 5-1
 - feed, 5-5
 - size, 5-1
 - type, 5-5
 - weight, 5-1, 5-9
- paper size
 - custom, 2-10
- Parameters of a scan

- specifying, 3-20
- PDF, 5-6
- PDF Setting dialog box, 3-13
- Plain paper, 5-1
- Portrait, 5-6
- Ports tab, Windows 2000/XP, 2-25
- Power
 - not supplied, 4-1
- Preferences dialog box, 3-32
- Presto! PageManager, 3-7
- Preview, 5-6
- Preview tab, 3-33
- Print

- queue, 5-6
- settings, 2-2

Printer

- does not print, 4-1
- driver, 4-4, 5-6
- locks up, 4-3
- opening printing preferences, 2-3
- opening properties, 2-3
- problems, 4-1
- sharing settings, 2-50
- specifications, 5-1
- stops printing, 4-2

Printer properties

- Windows 2000/XP dialog boxes, 2-22
- Windows 98/Me dialog boxes, 2-4

Printing, 2-1

- speed, 5-1

Problems

- driver, 4-3
- installing, 4-9
- printer, 4-1
- removing (uninstalling), 4-9
- scanning, 4-5
- uninstalling, 4-9

Profile tab, Windows 2000/XP, 2-29

Profiles

- Windows 2000/XP, 2-43
- Windows 98/Me, 2-18

Q

Quality tab

- Windows 2000/XP, 2-32, 2-39
- Windows 98/Me, 2-14

Queue, 5-6

R

- Random Access Memory, 5-7
- Reduce Dust and Scratches, 3-24
- Resolution, 3-42, 5-1, 5-7
 - determining, 3-37

S

- Scaling, 5-7
- Scan tab, 3-34

- ScanGear MF
 - Advanced Mode, 3-18
 - dialog box, 3-7, 3-13
 - setting, 3-14
 - Simple Mode, 3-15
- Scanner and Camera Wizard, 3-38
- Scanner driver, 5-7
- Scanner tab, 3-36
- Scanners and Cameras, 3-3
- Scanning, 3-1
 - from an application, 3-12, 3-43
 - problems, 4-5
 - setting, 3-3
 - using MF Toolbox, 3-5
 - with [Start] on the machine, 3-1
- ScanSoft OmniPage, 3-7
- Security tab
 - Windows 2000/XP, 2-28
- Server, 5-7
 - settings Windows 2000/XP, 2-47
 - settings Windows 98/Me, 2-51
- Shared printer, 2-47
 - Add Printer Wizard (Windows 2000/XP), 2-54
 - Add Printer Wizard (Windows 98/Me), 2-55
 - network download, 2-54
- Sharing tab
 - Windows 2000/XP, 2-24
- Shielded, 5-7
- Simple Mode
 - switching, 3-15
 - toolbar, 3-17
 - using, 3-15
- Software
 - checking installation, 1-7
 - installing, 1-2
 - problems during installation, 4-9
 - problems during removal, 4-9
 - uninstalling/reinstalling, 1-8
- Spool Settings, 2-5
- Spooling, 5-7
- System requirements, 1-1

T

- Threshold, 3-31
- Tone Curve, 3-30
- Toner, 5-8
 - saver, 5-8
- Transfer roller, 5-8
- Troubleshooting, 4-1
 - driver problems, 4-3
 - installing and uninstalling problems, 4-9
 - printer problems, 4-1
 - scanning problems, 4-5

U

- Uninstall, 5-8
 - drivers, 1-8
- Unsharp Mask, 3-23

- USB 2.0, 1-2, 4-6
- USB cable
 - connecting, 1-7
- USB interface, 5-8

V

- Version conflict, 4-10
- View Settings
 - Windows 2000/XP, 2-46
 - Windows 98/Me, 2-22

W

- White lines, 4-9
- WIA driver, 3-38
- Windows 2000/XP
 - Advanced tab, 2-26
 - Attribution tab, 2-30
 - Color management tab, 2-27
 - Finishing tab, 2-32
 - General tab, 2-23
 - Grayscale Adjustment tab, 2-41
 - Matching tab, 2-42
 - Page Setup tab, 2-33
 - Ports tab, 2-25
 - Profile tab, 2-29
 - Quality tab, 2-39
 - Sharing tab, 2-24
- Windows 98/Me
 - Details tab, 2-5
 - Finishing tab, 2-12
 - General tab, 2-4
 - Grayscale Adjustment tab, 2-16
 - Matching tab, 2-17
 - Page Setup tab, 2-6
 - Printer Properties, 2-4
 - Quality tab, 2-14
- WYSIWYG, 5-9